

USER MANUAL

[DIGITAL DOOR LOCK]

ES-K70

PIN NUMBER
RFID CARD
MECHANICAL KEY



The default Pin Number is [1, 2, 3, 4].
Please change to new Pin Number.
Ensure not to use consecutive or repetitive numbers for your safety.

FC a. Rule Part 15.19(a)(3): This device complies with part 15 of the FCC Rules. Operation is subject to the following two conditions: (1) This device may not cause harmful interference, and (2) this device must accept any interference received, including interference that may cause undesired operation.

b. Rule Part 15.21: The users manual or instruction manual for an intentional or unintentional radiator shall caution the user that changes or modifications not expressly approved by the party responsible for compliance could void the user's authority to operate the equipment.

info@epic.co.kr www.epic.co.kr
This product should be installed by skilled installer only.
To receive full coverage of the product warranty.
Please do not install by yourself for safety purposes.

PTMP6230ONTA_REV.01

Safety Precautions

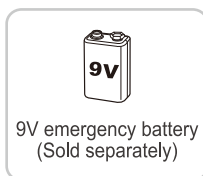
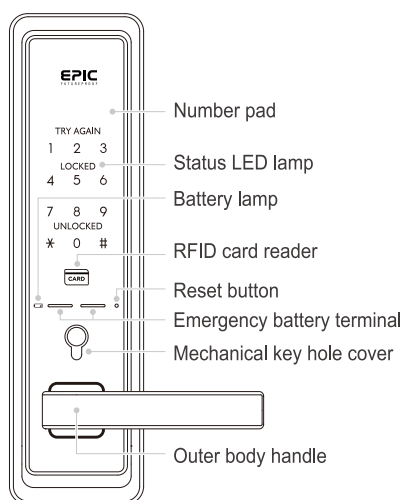
- Please do not repair the product by yourself.
- Please check environment before installation.
- Please read the manual carefully before using.
- Please change your pin number periodically.
- Please do not knock or apply force on the lock.
- Protect the product from wetness & moisture.
- Please replace with new batteries all-at-once.
- Clean the lock with clean dry cloth.
- Please use the product correspondingly.

Product Dimension

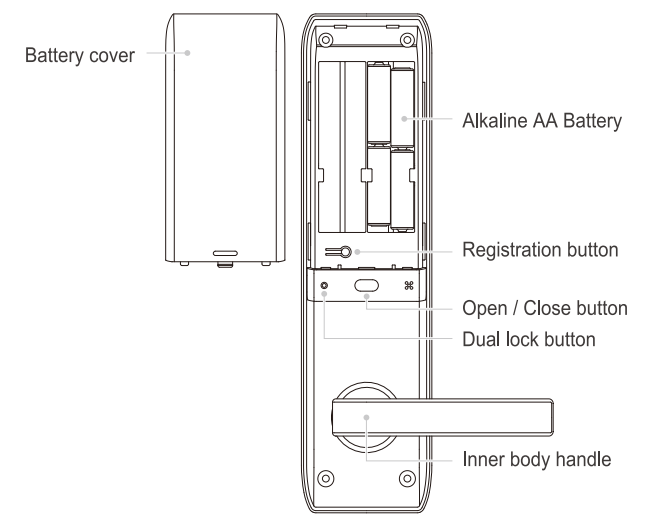
Items	Descriptions	
Installation conditions	Door thickness	40~50mm
Authentication Method	No. of pin number	4~12 digits
Power supply	DC 6V	LR 6 AA ALKALINE (X8)EA
Emergency Battery	DC 9V	ALKALINE BATTERY (Sold separately)
Temperature	Sensor temperature	72°C±5°C Maximum Temperature 62°C±5°C Normal Temperature
	Material	Outer body Al, Zn, ABS Inner body Zn, ABS

Items	Frequency	Channel	Module	Public line power
RFID	13.56 MHz	1 EA	ASK	93.5 dBuV/m@10m Below
Remote device	447.275 MHz	1 EA	FSK	10mW Below

Product Description (Outer body)



Product Description (Inner body)

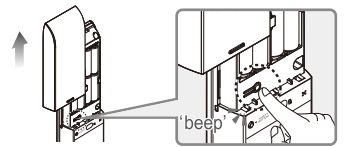


Pin Number Registration

Caution Always register pin number while door is open, default pin number upon purchase is [1, 2, 3, 4].
Warning! Please do not forget the pin number at all times. Once forgotten you will not be able to register new pin or card. There is no pin number reset.

※ To change existing pin number

- ① Open battery cover.
Press [Registration] button once
~beep sound will be heard.



- ② Enter current pin number followed by [*] button.
Press number [1] button.



- ③ Enter new pin number to be registered 4~12 digits.
Press [*] button on the number pad.
A melody will be heard and the registration is complete.

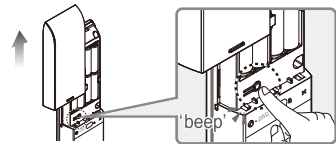


Caution Please register pin number within 10 seconds after pressing the registration button or the registration process will be cancelled.
New registration of a single pin number will delete all previously registered pin number on the system.

RFID Card Registration (all-at-once)

Caution New RFID cards are registered without erasing previous registration records. RFID cards included inside the box are not registered in default. Only compatible cards can be registered and used.

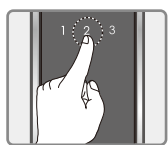
- ① Open battery cover.
Press [Registration] button once
~beep sound will be heard.



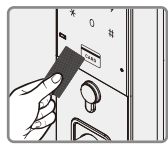
- ② Enter current pin number, followed by [*] button.



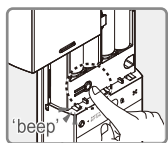
- ③ Press number [2] button.



- ④ Place the card to be registered on the card reader.
The beep sound will be heard, and the saved 3 digit location number(001~100) will be displayed on the number pad.



- ⑤ Press [Registration] button after all cards has been registered and the registration is complete.



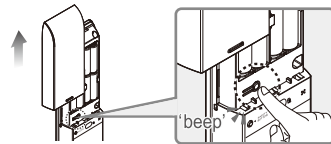
Note

Up to 100 RFID cards can be registered. To register multiple RFID cards, repeat step ④ before the number pad turns off.
Place RFID cards on the card reader within 10 seconds after pressing [Registration] button or the registration process will be cancelled.
No more RFID card can be registered after the 100th registration.

RFID Card Registration (one-by-one)

Caution The card location number should be from 001~100 and it must consist of 3 digits always.
When it is not individual card registration, Pressing [*] button will enable normal registration mode.

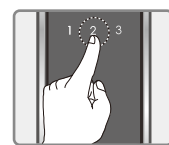
- ① Open battery cover.
Press [Registration] button once
~beep sound will be heard.



- ② Enter current pin number, followed by [*] button.



- ③ Press number [2] button.



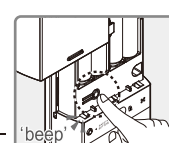
- ④ Enter the card location number consisting of 3 digits from (001~100), followed by the [#] button.



- ⑤ When number pad arrow is displayed it is in RFID card entry standby status.
Place the card to be registered on the card reader.
The beep sound will be heard, and the saved 3 digit location number will be displayed on the number pad.



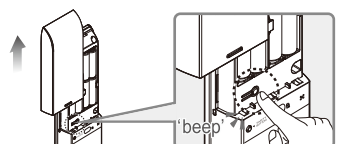
- ⑥ - To register additional RFID cards -
When all numbers on the pad is lighted, enter new location number, followed by [#] button, then register the new card.



- When there are no additional cards to be registered -
Press [Registration] button to complete the registration.

RFID Card Deletion (all-at-once)

- ① Open battery cover.
Press [Registration] button once
~beep sound will be heard.
Enter current pin number, followed by [*] button.



- ② Press number [8] button.

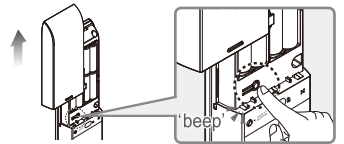


- ③ Long press [#] button for 5 seconds
When the melody is heard, All RFID cards are deleted.



RFID Card Deletion (one-by-one)

- ① Open battery cover.
Press [Registration] button once
~beep sound will be heard.
Enter current pin number, followed by [*] button.



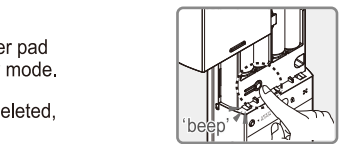
- ② Press number [8] button followed by [#] button.



- ③ Enter the registered card location number, followed by [#] button.

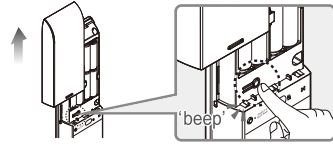


- ④ After deletion is complete, all numbers are lighted on the number pad
Additional card deletion is in standby mode.
If there is no location number to be deleted, press [Registration] button.



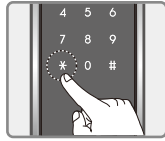
Guest Pin Number Registration

- 1 Open battery cover.
Press [Registration] button once
~beep sound will be heard.



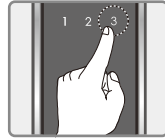
OUTSIDE

- 2 Enter current pin number,
followed by [*] button.



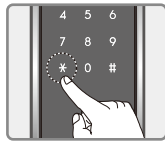
OUTSIDE

- 3 Press number [3] button.



OUTSIDE

- 4 Enter new guest pin number to be registered (4~12 digits)
and press [*] button to complete the registration.

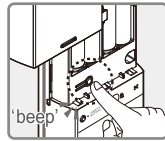


- ◆ The guest pin number is 1 time entry only.
- ◆ New registration will delete old guest pin number.
- ◆ When registration mode is cancelled old pin number will be restored.

Dual-mode Security Feature Setting

* The pin number & RFID card should be registered first before setting this feature.

- 1 Press [Registration] button for 5 seconds
the entire LED will light up after 3 seconds
the alarm will stop and after 2 seconds
it will be on again.



OUTSIDE

- 2 Enter current pin number.
When you press [*] button,
the front panel LED will blink and light-up.



7

OUTSIDE

- 3 Press [1] button to Turn-Off Dual-Mode Security.
Press [3] button to Turn-On Dual-Mode Security.

During Dual-mode Security Setting,
when the confirmation sound is heard,
everything will be turned-off.



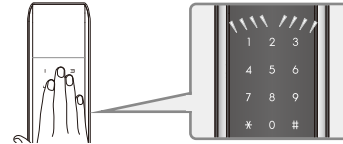
Random Number Feature

Note * Random number feature is enabled in default.
This is a security feature that keeps the pin number from being
exposed by the additional random number that is added before
or after the original pin number. The number to be entered
including the pin number should not exceed 20 digits.

Opening Door Outside

Method 1 : Opening by pin number

- 1 Touch the number pad.



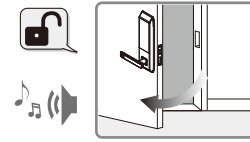
OUTSIDE

- 2 Enter [Pin number]
and press [*] button.



OUTSIDE

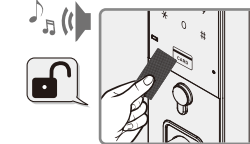
- 3 After the melody is heard,
the door will open.



Method 2 : Opening by RFID card

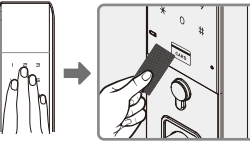
- 1 During Automatic Detection Mode

Press registered RFID card on reader.
Melody will be heard and the door will open.



- 2 During Manual Detection Mode

Touch the number pad,
check if the number pad lights up,
place registered RFID card on the reader.
Melody will be heard and the door will open.



8

Method 3 : Opening by random number

Touch the number pad, enter any random number, Enter pin number,
press [*] button or enter pin number first, then enter any random number,
then press [*] button and the door will open.

- 1 Enter any random number + Enter pin number + [*] button.
- 2 Enter pin number + Enter any random number + [*] button.

Either way, when the melody is heard. The door will open.

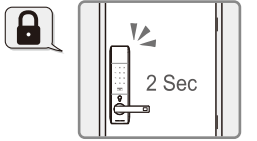
Method 4 : Opening by Dual-mode Security

Enter Pin Number + Press [*] button + Place the card to be registered on the card reader

Closing Door Outside

Method 1 : Automatic lock mode

- ▶ The door will lock automatically
after 2 seconds of closing the door.



Method 2 : Manual lock mode

- ▶ Touch the number pad
and the door will lock.



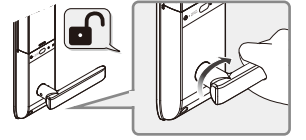
Opening Door Inside

- Note** Turn the handle downward within
7 seconds of opening the door or
the door will lock again.



By turning the handle downward

- ▶ While the door is closed
turn the handle in downward motion
and the door will open.



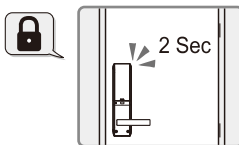
Caution Do not install on inside-pulling doors.

9

Closing Door from Inside

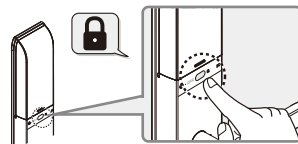
Method 1 : Automatic lock mode

- ▶ The door will lock automatically
after 2 seconds of closing the door.



Method 2 : Manual lock mode

- ▶ After closing the door
press the [Open / Close] button
and the door will lock.



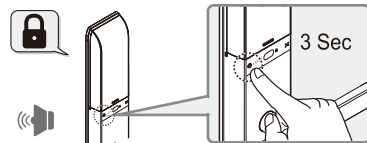
Note In manual mode, when the [Manual Lock] button is pressed,
the ~beep sound will be heard to signal that the door is locked.

Forced-Lock Feature

■ Inside double lock - When enabled will not allow Pin, Card, entry from outside.

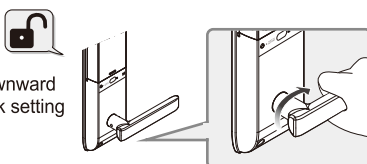
Setting

- 1 After closing the door.
- 2 Press the [Safety button] located
on the inner body for 3 seconds
melody will be heard, and setting is complete.



Cancellation

- 1 Turn the inner body handle in downward
motion inside, and the double lock setting
will be cancelled.

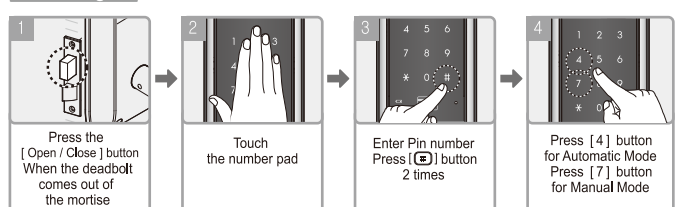


Automatic / Manual Lock Setting

An optional feature that lets you set the lock in automatic and manual Lock mode.

Setting

While the door is partially opened.

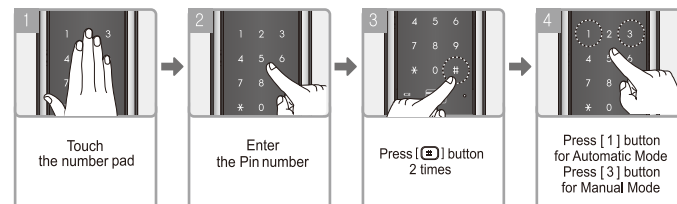


10

Note Automatic Lock Mode is set in default. In Manual Lock Mode,
the door will not lock after closing the door,
instead touch the number pad outside or
press the [Open / Close] button inside to lock the door.

RFID Card Automatic / Manual Detection Setting

An optional feature that lets you set the RFID Card detection to automatic
and manual mode.



- Note** 1 In Automatic Mode,
- Place the RFID Card on the card reader and the door will open.
- 2 In Manual Mode,
- Touch the number pad,
Place the RFID Card on the card reader and the door will open.
- * Automatic Mode is enabled in default.

Sound Mute Function

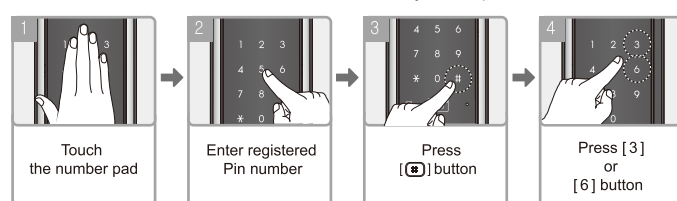
Regardless of the volume setting, This feature lets you mute the operation melody.
This is per 1 time usage only. The operation sound will occur on next operation.

- 1 Touch the number pad,
press the [*] button. (In mute state)
- 2 Enter Pin number, press [*] button, door will open.
(Number pad will blink)



Sound Volume Setting

This feature allows the user to adjust the operation sound volume per level.
(perform while door closed) * Sound can be adjusted up to 7 levels.



Note Press [3] button to increase sound.
Press [6] button to decrease sound.
In mute mode the number pad will blink, when you press a number.
The volume level is set on high in default.

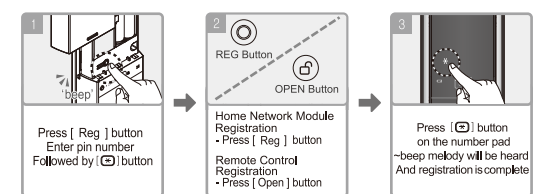
11

Home Network Module & Remote Control Setting

This feature lets you open the door remotely via home network devices
and remote control. (Optional)

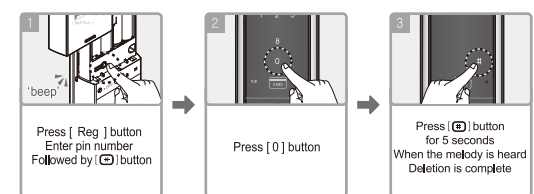
* Home Network Module and Remote Control setting procedure is the same.

Registration



Note For registration of additional remote control repeat step number 2
Up to 5 remote controls can be registered.

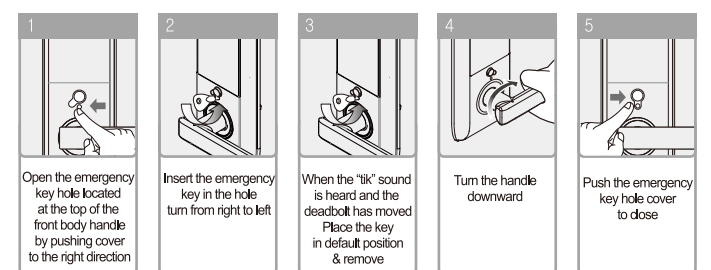
Deletion



Note New registration of single remote control will delete previously
registered ones. This method can be used as alternative in deleting
remote control.

Mechanical Key

Note Opening the door when the lock is not functioning normally.



12