

USER MANUAL

[DIGITAL DOOR LOCK]

The default Pin Number is [1, 2, 3, 4]. Please change to new Pin Number. Ensure not to use consecutive or repetitive numbers for your safety.

FC This device complies with Part 15 of the FCC Rules. Operation is subject to the following two conditions: (1) This device may not cause harmful interference, and (2) this device must accept any interference received, including interference that may cause undesired operation.

NOTE: This equipment has been tested and found to comply with the limits for a Class B digital device, pursuant to part 15 of the FCC Rules. These limits are designed to provide reasonable protection against harmful interference in a residential installation. This equipment generates, uses and can radiate radio frequency energy and, if not installed and used in accordance with the instructions, may cause harmful interference to radio communications. However, there is no guarantee that interference will not occur in a particular installation. If this equipment does cause harmful interference to radio or television reception, which can be determined by turning the equipment off and on, the user is encouraged to try to correct the interference by one or more of the following measures:

- Reorient or relocate the receiving antenna.
- Increase the separation between the equipment and receiver.
- Connect the equipment into an outlet on a circuit different from that to which the receiver is connected.
- Consult the dealer or an experienced radio/TV technician for help.

Rule Part 15.21: The users manual or instruction manual for an intentional or unintentional radiator shall caution the user that changes or modifications not expressly approved by the party responsible for compliance could void the user's authority to operate the equipment

info@epic.co.kr www.epic.co.kr

This product should be installed by skilled installer only. To receive full coverage of the product warranty. Please do not install by yourself for safety purposes.

REV.04

Product Line-Up

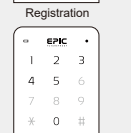
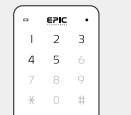
MODEL	LIGHTING	FUNCTION
ES-100D	① [1],[4],[5] ② [1],[4],[5],[0]	Pin Number
ES-S100D		Pin Number + RFID Card
ES-300D		Pin Number + RFID Card
ES-500D	① [1],[2],[4],[5] ② [1],[2],[4],[5],[0]	Pin Number + RFID Card
ES-500H		Pin Number + RFID Card
ES-700G		Pin Number + RFID Card (Outer / Inner body) + Mechanical Key
ES-F300D		Pin Number + RFID Card + Fingerprint
ES-F500D		Pin Number + RFID Card + Fingerprint
ES-F500H		Pin Number + RFID Card + Fingerprint
ES-F500HK	① [1],[2],[3],[4],[5] ② [1],[2],[3],[4],[5],[0]	Pin Number + RFID Card + Fingerprint + Mechanical Key
ES-F700G		Pin Number + RFID Card (Outer / Inner body) + Fingerprint + Mechanical Key
ES-FF730G		Pin Number + RFID Card + Fingerprint (Outer / Inner body) + Mechanical Key
ES-7000K	① [1],[2],[4],[5] ② [1],[2],[4],[5],[0]	Pin Number + RFID Card + Mechanical Key
ES-9000K		Pin Number + RFID Card + Mechanical Key
ES-F9000K	① [1],[2],[3],[4],[5] ② [1],[2],[3],[4],[5],[0]	Pin Number + RFID Card + Fingerprint + Mechanical Key
EF-P8800K		Pin Number + RFID Card + Fingerprint + Mechanical Key

① Registration ② Deletion

Note

The number pad lighting is as follows, during registration and deletion, the numbers that are lighted when the number pad is touched are as follows, products containing each function will all be lighted.

- [1] Pin Number Registration & Deletion
- [2] RFID Card Registration & Deletion
- [3] Fingerprint Registration & Deletion
- [4] Guest Pin Number Registration & Deletion
- [5] Remote Control Registration & Deletion
- [0] User Registered Information & Settings Reset



Caution

This is a unified manual of EPIC products. Products features may change for improvement purposes. Contents of this manual may be modified without prior notice.

User Pin Number Registration

Caution

Please perform while door is open Default Pin Number is [1, 2, 3, 4]. Don't forget your Pin Number. If you forgot your Pin Number, New registration of Pin Number, RFID Card, Fingerprint, Guest Pin Number and Remote Control is not possible.

- Open the battery cover and press the [Registration] button.
- Enter the User Pin Number followed by the [#] button. (First registration: Initial User Pin Number [1, 2, 3, 4] + [#] button.)
- After entering the Registration Mode, press the [1] button.
- Enter 4~12 digits New User Pin Number and press the [#] button.
- Re-Enter the New User Pin Number and press the [Registration] button to complete the process.



- ① Note
- Only 1 user Pin Number can be saved.
 - When error occur during registration [2] will be lighted together with an error sound.
 - During each process, when [Registration] button is pressed, the registration process will end.
 - When the registration process has completed, a completion sound will be heard.

User RFID Card Registration (all-at-once)

- Open the battery cover and press the [Registration] button.
- Enter the User Pin Number followed by the [#] button. (First registration: Initial User Pin Number [1, 2, 3, 4] + [#] button.)
- After entering the Registration Mode, press the [2] button.
- Place the Card to be registered on the card reader. When the Card has been successfully registered, the 3 digits Card Placement Number will be displayed on the number pad and registration is complete. (If you want to register additional Card, repeat step 4.)
- When registration of all Card is done, press the [Registration] button to complete the process.



User RFID Card Registration (one-by-one)

- Open the battery cover and press the [Registration] button.
- Enter the User Pin Number followed by the [#] button. (First registration: Initial User Pin Number [1, 2, 3, 4] + [#] button.)
- After entering the Registration Mode, press the [2] button.
- Enter the Card Placement Number from 001~200 on the number pad followed by the [#] button. (When the selected Card Placement Number is already in use, the error sound will be heard and [7] button will be lighted on the number pad.)
- Place the Card to be registered on the card reader. When the Card has been successfully registered, the 3 digits Card Placement Number will be displayed on the number pad and registration is complete. (If you want to register additional Card, repeat step 4.)
- When registration of all Card is done, press the [Registration] button to complete the process.



- ① Note
- Up to 200 cards can be registered.
 - New registration will not delete previously registered card in the system.

User Fingerprint Registration (all-at-once)

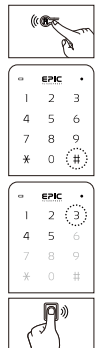
- Open the battery cover and press the [Registration] button.
- Enter the User Pin Number followed by the [#] button. (First registration: Initial User Pin Number [1, 2, 3, 4] + [#] button.)
- After entering the Registration Mode, press the [3] button.
- Check the total number of the registered Fingerprint displayed on the number pad, then enter the Fingerprint to be registered for 4 times. When the Fingerprint has been successfully registered, the 3 digits Fingerprint Placement Number will be displayed on the number pad and registration is complete. (If you want to register additional Fingerprint, repeat step 4.)
- When registration of all Fingerprint is done, press the [Registration] button to complete the process.



- ① Note
- Up to 100 Fingerprints can be registered.
 - You can also re-register registered Fingerprints.
 - When error occur during registration LED [2] will be blinking.

User Fingerprint Registration (one-by-one)

- Open the battery cover and press the [Registration] button.
- Enter the User Pin Number followed by the [#] button. (First registration: Initial User Pin Number [1, 2, 3, 4] + [#] button.)
- After entering the Registration Mode, press the [3] button.
- Check the total number of the registered Fingerprint displayed on the number pad, enter the Fingerprint Placement Number from 001~100 on the number pad followed by the [#] button. (When the selected Fingerprint Placement Number is already in use, the error sound will be heard and [7] button will be lighted on the number pad.)
- Enter the Fingerprint to be registered for 4 times. When the Fingerprint has been successfully registered, the 3 digits Fingerprint Placement Number will be displayed on the number pad and registration is complete. (If you want to register additional Fingerprint, repeat step 4.)
- When registration of all Fingerprint is done, press the [Registration] button to complete the process.



User Guest Pin Number Registration

- Open the battery cover and press the [Registration] button.
- Enter the User Pin Number followed by the [#] button. (First registration: Initial User Pin Number [1, 2, 3, 4] + [#] button.)
- After entering the Registration Mode, press the [4] button.
- Enter 4~12 digits User Guest Pin Number and press the [#] button.
- Re-Enter the User Guest Pin Number and press the [Registration] button to complete the process.



- ① Note
- If you register a new guest Pin Number, the old one will be deleted.
 - Only 1 Guest Pin Number can be saved. It will be deleted after 1 usage.

User Remote Control Registration (all-at-once)

Caution

If the Remote Control receiver module is not connected and number [5] button does not light up, the Remote Control cannot be registered.

- Open the battery cover and press the [Registration] button.
- Enter the User Pin Number followed by the [#] button. (First registration: Initial User Pin Number [1, 2, 3, 4] + [#] button.)
- After entering the Registration Mode, press the [5] button.
- Press the [Open] button of the Remote Control to be registered. When the Remote Control has been successfully registered, the 3 digits Remote Control Placement Number will be displayed on the number pad and registration is complete. (If you want to register additional Remote Control, repeat step 4.)
- When registration of all Remote Control is done, press the [Registration] button to complete the process.



User Remote Control Registration (one-by-one)

Caution

If the Remote Control receiver module is not connected and number [5] button does not light up, the Remote Control cannot be registered.

- Open the battery cover and press the [Registration] button.
- Enter the User Pin Number followed by the [#] button. (First registration: Initial User Pin Number [1, 2, 3, 4] + [#] button.)
- After entering the Registration Mode, press the [5] button.
- Enter the Remote Control Placement Number from 001~010 on the number pad followed by the [#] button. (When the selected Remote Control Placement Number is already in use, the error sound will be heard and [7] button will be lighted on the screen.)
- Press the [Open] button of the Remote Control to be registered. When the Remote Control has been successfully registered, the 3 digits Remote Control Placement Number will be displayed on the number pad and registration is complete. (If you want to register additional Remote Control, repeat step 4.)
- When registration of all Remote Control is done, press the [Registration] button to complete the process.



- ① Note
- The Remote Control module should be installed on the unit to work.
 - Up to 10 Remote Controls can be registered.
 - New registration will not delete stored ones in the unit.

User RFID Card Deletion (all-at-once)

- Open the battery cover and press the [Registration] button for 3 seconds.
- Enter the User Pin Number followed by the [#] button. (First registration: Initial User Pin Number [1, 2, 3, 4] + [#] button.)
- After entering the Deletion Mode, press the [2] button.
- When the number pad turns on press the [#] button for 5 seconds. The melody will be heard and all registered Cards will be deleted.



User RFID Card Deletion (one-by-one)

- Open the battery cover and press the [Registration] button for 3 seconds.
- Enter the User Pin Number followed by the [#] button. (First registration: Initial User Pin Number [1, 2, 3, 4] + [#] button.)
- After entering the Deletion Mode, press the [2] button.
- Enter the registered Card Placement Number from 001~200 to be deleted followed by the [#] button. (If you want to delete additional Card, repeat step 4.)
- When specific Card is deleted, press the [Registration] button to complete the process.



User Fingerprint Deletion (all-at-once)

- Open the battery cover and press the [Registration] button for 3 seconds.
- Enter the User Pin Number followed by the [#] button. (First registration: Initial User Pin Number [1, 2, 3, 4] + [#] button.)
- After entering the Deletion Mode, press the [3] button.
- When the number pad turns on press the [#] button for 5 seconds. The melody will be heard and all registered Fingerprints will be deleted.



User Fingerprint Deletion (one-by-one)

- Open the battery cover and press the [Registration] button for 3 seconds.
- Enter the User Pin Number followed by the [#] button. (First registration: Initial User Pin Number [1, 2, 3, 4] + [#] button.)
- After entering the Deletion Mode, press the [3] button.
- Enter the registered Fingerprint Placement Number from 001~100 to be deleted followed by the [#] button. (If you want to delete additional Fingerprint, repeat step 4.)
- When specific Fingerprint is deleted, press the [Registration] button to complete the process.



User Remote Control Deletion (all-at-once)

- Open the battery cover and press the [Registration] button for 3 seconds.
- Enter the User Pin Number followed by the [#] button. (First registration: Initial User Pin Number [1, 2, 3, 4] + [#] button.)
- After entering the Deletion Mode, press the [5] button.
- When the number pad turns on press the [#] button for 5 seconds. The melody will be heard and all registered Remote Control will be deleted.



User Remote Control Deletion (one-by-one)

1. Open the battery cover and press the [Registration] button for 3 seconds.
2. Enter the User Pin Number followed by the [#] button.
(First registration: Initial User Pin Number [1, 2, 3, 4] + [#] button.)
3. After entering the Deletion Mode, press the [5] button.
4. Enter the registered Remote Control Placement Number from 001~010 to be deleted followed by the [#] button.
(If you want to delete the additional Remote Control, repeat step 4.)
5. When specific Remote Control is deleted, press the [Registration] button to complete the process.



User Registered Information & Settings Reset

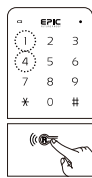
1. Open the battery cover and press the [Registration] button for 3 seconds.
2. Enter the User Pin Number followed by the [#] button.
(First registration: Initial User Pin Number [1, 2, 3, 4] + [#] button.)
3. After entering the Deletion Mode, press the [0] button.
4. Press the [Open/Close] button, then press the [Registration] button for 10 seconds.



- Note**
- All user properties and settings will be reset.
 - Even if the registration reset is performed the initial administrator Pin Number will remain.

RFID Card Auto Recognition / Manual Recognition

1. Touch the number pad to turn on all LED.
2. Enter the User Pin Number followed by the [#] button.
(First registration: Initial User Pin Number [1, 2, 3, 4] + [#] button.)
3. Press the [1] button or [4] button.
4. Press the [Registration] button to complete the setting.



- Note**
- LED [1] : Card Auto Recognition / LED [4] : Card Manual Recognition
 - Card Auto Recognition : Place the RFID Card on the card reader and the door will open.
 - Card Manual Recognition : Touch the number pad, place the RFID Card on the card reader and the door will open.

7

Alarm Notification ON/OFF

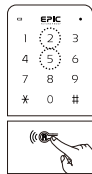
1. Touch the number pad to turn on all LED.
2. Enter the User Pin Number followed by the [#] button twice.
(First registration: Initial User Pin Number [1, 2, 3, 4] + [#] button.)
3. Press the [1] button or [4] button.
4. Press the [Registration] button to complete the setting.



- Note**
- Controls only the Alarm Notification.

Dual Authentication ON/OFF

1. Touch the number pad to turn on all LED.
2. Enter the User Pin Number followed by the [#] button twice.
(First registration: Initial User Pin Number [1, 2, 3, 4] + [#] button.)
3. Press the [2] button or [5] button.
4. Press the [Registration] button to complete the setting.



- Note**
- LED [2] : Dual Authentication ON / LED [5] : Dual Authentication OFF
 - If Dual Authentication is ON, must enter the User Pin Number and perform the second authentication.
 - If Dual Authentication is ON, User Cards, Fingerprints are not allowed as the primary authentication.
 - If Dual Authentication is ON, unregistered Cards do not respond.
 - Administrator Cards are allowed for primary authentication.
 - Administrator Pin Number, Cards ignore Dual Authentication.
 - The Remote Control, Guest Pin Number, Bluetooth can unlock the deadbolt without secondary authentication.
 - When the secondary authentication (card or fingerprint) of the user is not registered (or all of them are deleted), the deadbolt lock is released only by the User's primary authentication. (User Pin Number)
 - If the User's secondary authentication is not registered, Dual Authentication cannot be turned ON.
 - Even if Dual Authentication is ON, If the registered information (Cards, Fingerprints) were all deleted, Dual Authentication will be OFF.

Etiquette Mode

1. Touch the number pad to turn on all LED.
2. Press the [#] button once.



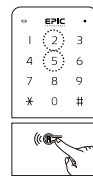
- Note**
- Silent mode will be applied to Pin Number, Card, Fingerprint and Guest Pin Number authentication for 1 time regardless of the previous Sound Setting.
 - A warning volume will occur after a total of 5 consecutive failed authentication.

10

Auto Lock / Manual Lock

- Caution** An optimal feature that lets you set the lock in automatic and manual lock mode.

1. Touch the number pad to turn on all LED.
2. Enter the User Pin Number followed by the [#] button.
(First registration: Initial User Pin Number [1, 2, 3, 4] + [#] button.)
3. Press the [2] button or [5] button.
4. Press the [Registration] button to complete the setting.



- Note**
- LED [2] : Deadbolt Auto Lock / LED [5] : Deadbolt Manual Lock
 - When deadbolt auto lock is set, the lock action is executed automatically according to the state of the sensor.
 - When deadbolt manual lock is set, touch the number pad for 2 seconds to execute the lock action.

Sound Setting (Voice, Buzzer, Warning, Door Open Alarm)

1. Touch the number pad to turn on all LED.
2. Enter the User Pin Number followed by the [#] button.
(First registration: Initial User Pin Number [1, 2, 3, 4] + [#] button.)
3. Press the [3] button or [6] button.
4. Press the [Registration] button to complete the setting.



- Note**
- LED [3] : Increase Volume / LED [6] : Decrease Volume
 - Controls all volume except, [Alarm Notification, Door Opening Melody]
 - Volume can be set to 8 levels. (1 level : Silent ~ 8 level : 80dB)

Door Open Alarm ON/OFF

1. Touch the number pad to turn on all LED.
2. Enter the User Pin Number followed by the [#] button.
(First registration: Initial User Pin Number [1, 2, 3, 4] + [#] button.)
3. Press the [7] button.
4. Press the [Registration] button to complete the setting.



- Note**
- The settings of Door Open Alarm ON and OFF are repeated through the toggle setting.
 - When the Door Alarm Mode On (Auto Lock Mode On), Latch / Magnet sensor disconnected, the buzzer will be sound 3 times every 7 seconds.

8

Random Number Feature

- Up to 20 digits can be entered including the Pin Number.
- The Pin Number must be entered after the Random Number.

Automatic Re-locking Function

- The door is not opened within 7 seconds after the door is unlocked by authentication, the Automatic Re-locking action will be executed.

1 Minute Lock Warning Function

- Total 5 consecutive failure will result in 1 minute suspension of authentication.
- After the alarm sound for 7 seconds, operation stops for 1 minute.
- During 1 Minute Lock operation, an error sound occurs when authentication is attempted.
- During 1 Minute Lock operation, Pin Number, Card, Fingerprint, Guest Pin Number and Remote Control operation will not work.
- Press the [Open/Close] button, 1 Minute Lock will be disabled.

Low Battery Warning Function

- When low battery is detected, the [Battery Replacement] LED lights up.
- When low battery is detected, a warning melody will be heard.
- When low battery is detected, authentication operation may not operate normally.
- Low voltage : 4.5V
- When the voltage returns to 5.5V, the alarm will be disabled.

Deadbolt Operation Error Warning Function

- When the deadbolt is opened or closed but does not operate normally, the Deadbolt Operation Error Warning Function is activated.
- During Deadbolt Operation Error, the [4] LED lights up.
- During Deadbolt Operation Error, a warning melody will be heard.
- For normal operation, retry for three times.

Intrusion Alarm Function

- If the deadbolt sensor stops responding or when the deadbolt sensor is on for more than seven seconds, Intrusion Alarm of more than 80 dB will be generated.
- You can disable the Intrusion Alarm through authentication of Pin Number, Cards, Fingerprints, and Remote Controls.
- When the Door Lock power is off, the Intrusion Alarm Function is disabled.
- During Intrusion Alarm Function, the [5] LED lights up.

11

Voice Mode / Buzzer Mode Setting

1. Touch the number pad to turn on all LED.
2. Enter the User Pin Number followed by the [#] button.
(First registration: Initial User Pin Number [1, 2, 3, 4] + [#] button.)
3. Press the [8] button.
4. Press the [Registration] button to complete the setting.



- Note**
- The settings of Voice Mode and Buzzer Mode are repeated through the toggle setting.
 - For models without Voice Mode, it is always set to Buzzer Mode.

Internal Forced Lock ON/OFF

- Inside : Internal Forced Lock ON
1. With the door closed and the deadbolt sensor detected, press the [Open/Close] button for 3 seconds.



- Outside : Internal Forced Lock OFF

1. Touch the number pad to turn on all LED.
2. Enter the User Pin Number followed by the [#] button.
(First registration: Initial User Pin Number [1, 2, 3, 4] + [#] button.)
3. Press the [9] button.
4. Press the [#] button to complete the setting.



- Inside : Internal Forced Lock OFF

1. Press the [Open/Close] button.
2. Open the door.



- Note**
- This function stops outside authentication.
 - This function can be set when the Latch / Magnet sensor reacts to door closing operation.
 - The Internal Forced Lock setting can be released from the outside.
 - This function is not available in ES-FF730G.

External Forced Lock Setting

1. Touch the number pad to turn on all LED.
2. Enter the User Pin Number followed by the [#] button.
(First registration: Initial User Pin Number [1, 2, 3, 4] + [#] button.)
3. Press the [0] button.
4. Press the [#] button to complete the setting.



- Note**
- This function stops the [Open/Close] button.
 - This function can be set when the Latch / Magnet sensor reacts to door closing operation.
 - When normal authentication is performed such as Pin Number the setting will be released.

9

High Temperature Alarm Function

- Detect high temperature (If the temperature sensor is at 60°C ± 10°C for 5 seconds) the deadbolt open action will be activated after 10 seconds.
- After opening the door, a High Temperature Alarm of 80 dB is generated for 2 minutes.
- Examine the opening status every 5 seconds. If the deadbolt does not open, retry open operation.
- Pressing any button from inside will execute deadbolt open operation.
- Deadbolt open action are executed, even if the Internal / External forced lock is set.
- You can disabled the High Temperature Alarm through authentication of Pin Number, Cards, Fingerprints and Remote Controls.
- When the Door Lock power is off, the High Temperature Alarm Function is disabled.
- During High Temperature Alarm Function, the [8] LED lights up.

Locking from Outside

- When the Deadbolt Auto Lock is set, if the deadbolt sensor is detected, the deadbolt will automatically lock after 2 seconds.
- Even if the Deadbolt Auto Lock is set, when you touch the number pad for 2 seconds before the deadbolt auto locks, Lock action will be activated.
- If the Deadbolt Manual Lock is set, touch the number pad for 2 seconds Locking action will be activated.

Locking from Inside

- Sub Type : Press the [Open/Close] Button. Turn the knob.
- Main Type : Press the [Open/Close] Button.
- When the Deadbolt Auto Lock is set, if the deadbolt sensor is detected, the deadbolt will automatically lock after 2 seconds.

Self-Diagnosis

- LED [2] : Registration & Deletion Error
(Pin Number, Card, Fingerprint, Guest Pin Number, Remote Control, Dual Authentication ON setting failed)
- LED [3] : Registration Error
(Number of Card, Fingerprint and Remote Control registration is "FULL" or No Registered Fingerprint)
- LED [4] : Deadbolt Operation Error
- LED [5] : Intrusion Alarm
- LED [6] : Authentication Error
(Unregistered Pin Number, Card, Fingerprint, Guest Pin Number)
- LED [7] : An Already Registered Placement Number
(Card, Fingerprint, Remote Control)
- LED [8] : High Temperature Alarm
- LED [9] : Internal / External Forced Lock Setting
- LED [0] : Fingerprint Module Error

12