

FCC PART 15 NOTICE STATEMENT:

CAUTION: Changes or modifications not expressly approved by the party responsible for compliance could void the user's authority to operate the equipment.

NOTE: This equipment has been tested and found to comply with limits for Class B digital device, pursuant to Part 15 Rules. These limits are designed to provide reasonable protection against harmful interference in a residential installation. This equipment generates, uses and can radiate radio frequency energy and, if not installed and used accordance with the instructions, may cause harmful interference to radio communications. However, there is no guarantee that interference will not occur in a particular installation. If this equipment interference to radio or television reception, which can be determined by turning the equipment off and on, the user is encouraged to try to correct the interference by one or more of the following measures:

- Reorient or relocate the receiving antenna.
- Increase the separation between the equipment and receiver.
- Connect the equipment into an outlet on a circuit different from that to which the receiver is connected.
- Consult the dealer or experienced radio/TV technician for help.

This device complies with Part 15 of FCC Rules. Operation is subject to the following two conditions:

- (1) This device may not cause harmful interference, and
- (2) This device must accept any interference received, including interference that may cause undesired operation.

IMPORTANT NOTICE:

DO NOT USE THIS RC VEHICLES IN INCLEMENT WEATHER. BOTH VEHICLE AND REMOTE ARE NOT WATERPROOF.

WARNING:

1. ADULT SUPERVISION REQUIRED.
2. DO NOT ATTEMPT TO MODIFY THE REMOTE CONTROL IN ANY WAY.
3. ALL THE PACKAGING MATERIAL MUST BE REMOVED BY AN ADULT.


CAUTION:

1. DO NOT MIX OLD AND NEW BATTERIES.
2. THE SUPPLY TERMINALS ARE NOT TO BE SHORT-CIRCUITED.
3. NON-RECHARGEABLE BATTERIES ARE NOT TO BE CHARGED.
4. ALWAYS REMOVE WEAK OR USED OR DEAD BATTERIES FROM THE PRODUCT.
5. DO NOT DISPOSE OF BATTERIES IN FIRE, BATTERIES MAY EXPLODE OR LEAK.
6. RECHARGEABLE BATTERIES ARE TO BE REMOVED FROM THE TOY BEFORE BEING CHARGED.

CONNECT & DISCOVER MORE:  @ Brookstone
HAVE QUESTIONS OR COMMENTS? EMAIL US AT: INFO@INNOVATIVEVNYC.COM

RETAIN THE PACKAGING FOR FUTURE REFERENCE. COLORS AND CONTENTS MAY VARY FROM THOSE ILLUSTRATED. THE BROOKSTONE® TRADEMARKS, NAMES AND LOGOS ARE OWNED BY BKST BRAND HOLDINGS, LLC. © 2021 ALL RIGHTS RESERVED.
MANUFACTURED, MARKETED AND DISTRIBUTED BY INNOVATIVE DESIGNS, LLC UNDER LICENSE. MADE IN CHINA
BATTERY OPERATED: REMOTE CONTROL REQUIRES 2 AA BATTERIES (INCLUDED). VEHICLE IS RECHARGEABLE VIA USB (INCLUDED).
ITEM NUMBERS: 715564 BRS
F16006/23L715564

7. RECHARGEABLE BATTERIES ARE ONLY TO BE CHARGED UNDER ADULT SUPERVISION.
8. ONLY BATTERIES OF THE SAME OR EQUIVALENT TYPE AS RECOMMENDED ARE TO BE USED.
9. DO NOT MIX ALKALINE, STANDARD (CARBON-ZINC) OR RECHARGEABLE BATTERIES.
10. THE TOY MUST BE FULLY ASSEMBLED IN ACCORDANCE WITH THE INSTRUCTIONS BEFORE OPERATING.
11. BE SURE TO INSERT THE BATTERIES CORRECTLY AND ALWAYS FOLLOW THE TOY AND BATTERY MANUFACTURERS' INSTRUCTIONS.

6+  PAP


INNOVATIVE DESIGNS, LLC
132 W. 36TH ST., RM 800
NEW YORK, NY 10018

Brookstone®

GLOW VIPER

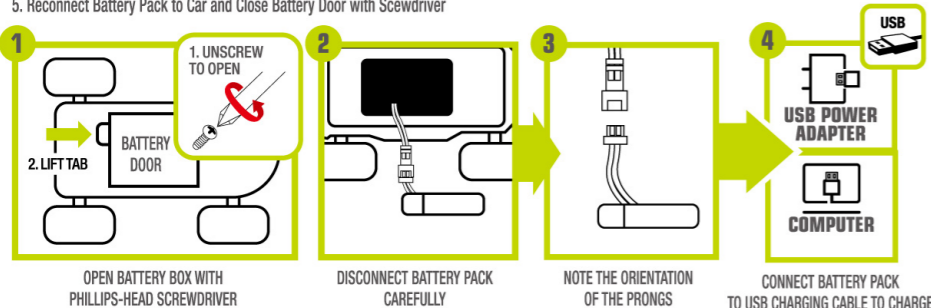
LIGHT-UP R/C STUNT VEHICLE
INSTRUCTION BOOKLET



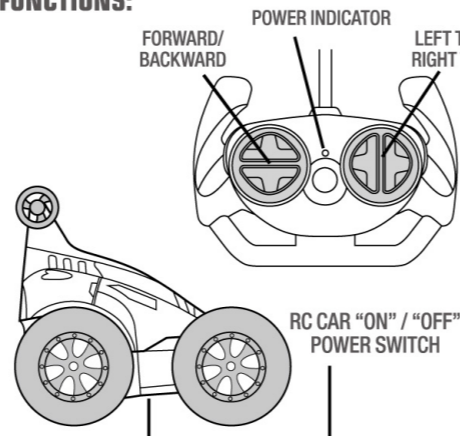
CHARGING THE CAR BATTERY

1. Make sure the RC Car is in the OFF position.
2. Use a screwdriver to remove the underside battery compartment door and remove battery pack
3. Plug in the USB cable into a computer's USB port, or any USB wall charger. The red light indicator should appear as item is charging.
4. Approximate charging time is ~2.5 Hours; play time will last approximately 20- 25 minutes on a full charge.
5. Reconnect Battery Pack to Car and Close Battery Door with Scwdriver

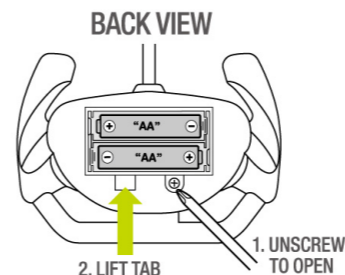
1x Glow Viper
1x Controller
1x USB Charging Cable
1x 3.7V Rechargeable Battery
2x AA Batteries
1x Quick Start Manual



RC CAR & REMOTE CONTROL FUNCTIONS:



REMOTE CONTROL BATTERY INSTALLATION:



BATTERY DOOR LOCATED ON BACK OF REMOTE
INSERT 2 NEW AA ALKALINE BATTERIES (INCLUDED)
AND CLOSE BATTERY DOOR



1 Year Warranty Details

BROOKSTONE Toys provides a 1 year warranty from the purchase date on the purchase receipt.

This warranty is supplementary to the warranty rights in the state of purchase.

The warranty covers the function of the product. It does not include external damages due to normal wear or accident-related damage, misuse or negligence.

The warranty does not apply in the event of failure to observe the operation or assembly instructions.

Any battery pack included in the delivery is explicitly excluded from the warranty.

The validity of the warranty expires in case of improper use or tampering.

Scope and application of the warranty

All claims that arise during the warranty period should be communicated in writing as per instructions below. Claims for lost product are excluded.

To enforce the warranty claim, please return any problematic items still under warranty with the original purchase receipt to:

BROOKSTONE Toys
132 West 36th Street, RM 800
New York, NY 10018

Please retain the original purchase receipt together with the warranty conditions for the duration of the warranty period. BROOKSTONE Toys reserves the right to refuse a warranty repair or warranty confirmation if proof cannot be provided.

Please make sure that the product is safely packed for transport. BROOKSTONE Toys is not responsible for damage in transport, or damages incurred when returning the product to BROOKSTONE Toys.