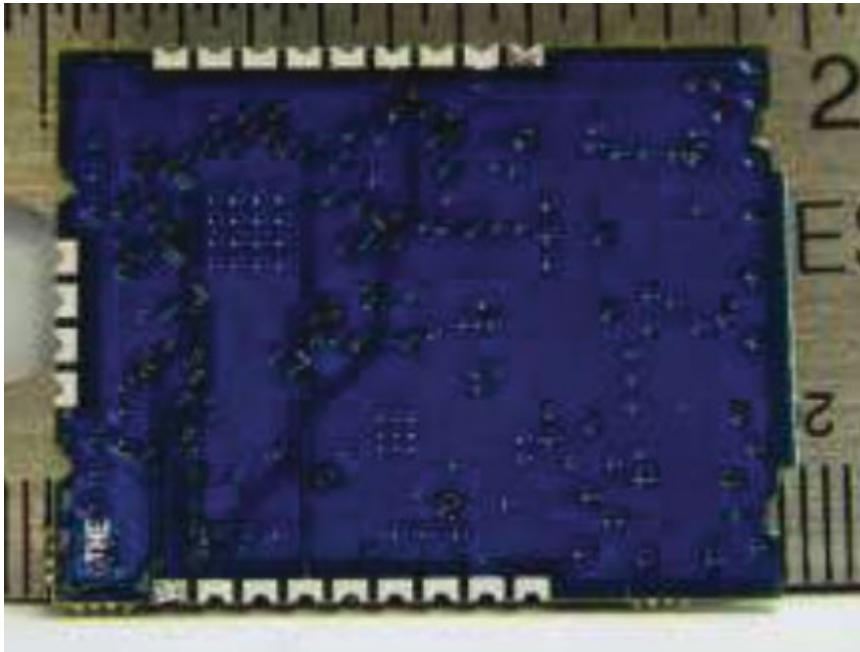
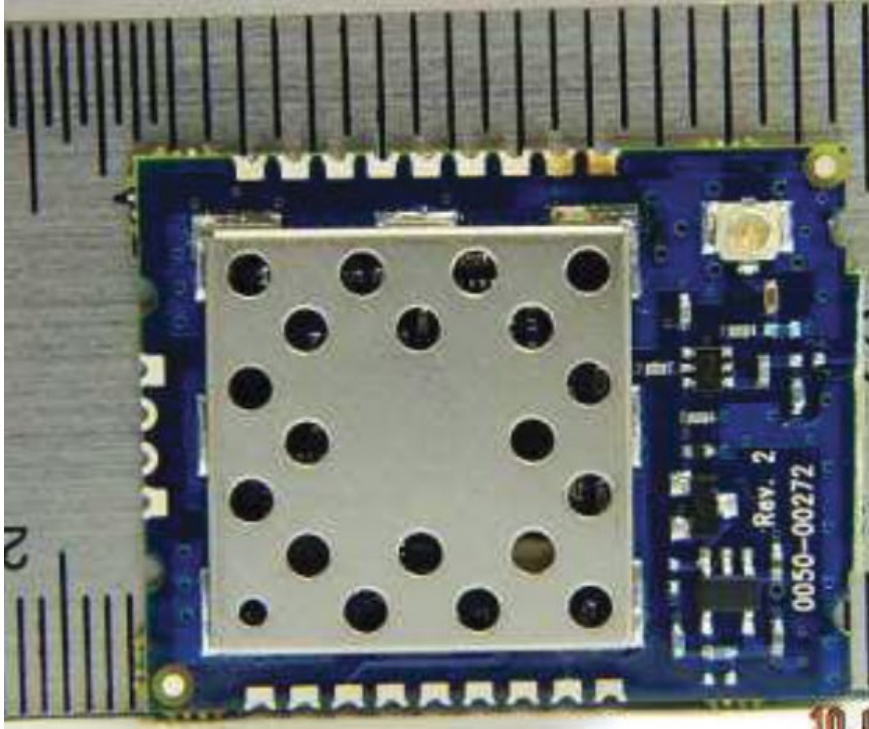


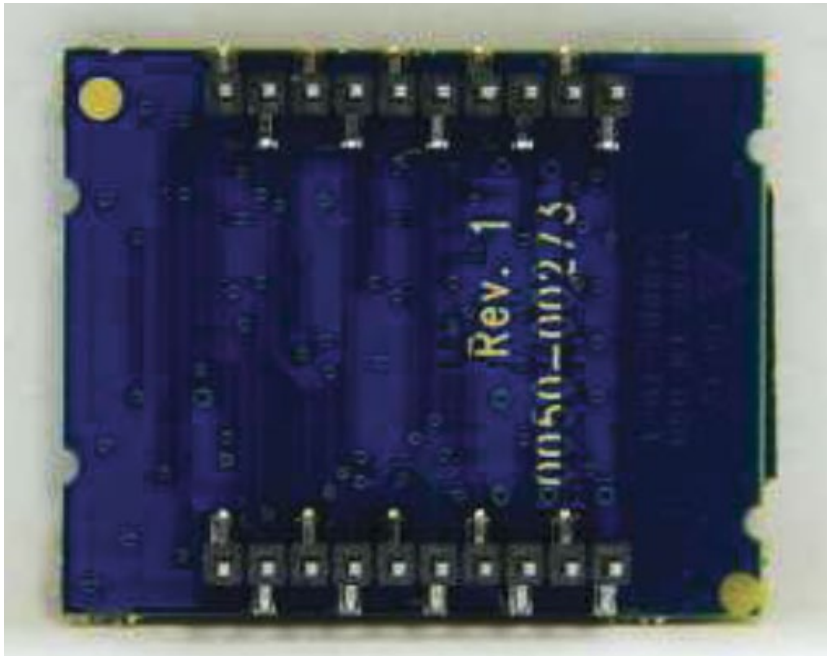
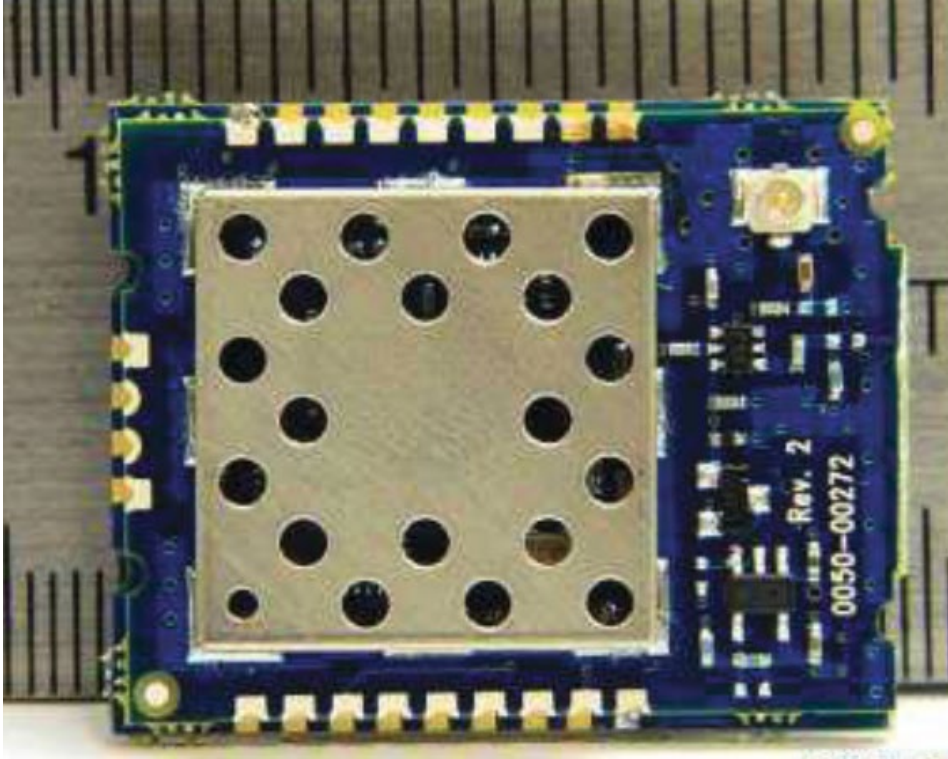
EXTERNAL PHOTOS	
Company Name	Vermeer Manufacturing Company
HVIN #	VERMEER2
FCC ID #	2AXF5-VERMEER2
IC #	26431-VERMEER2

Surface Mount (312000365)



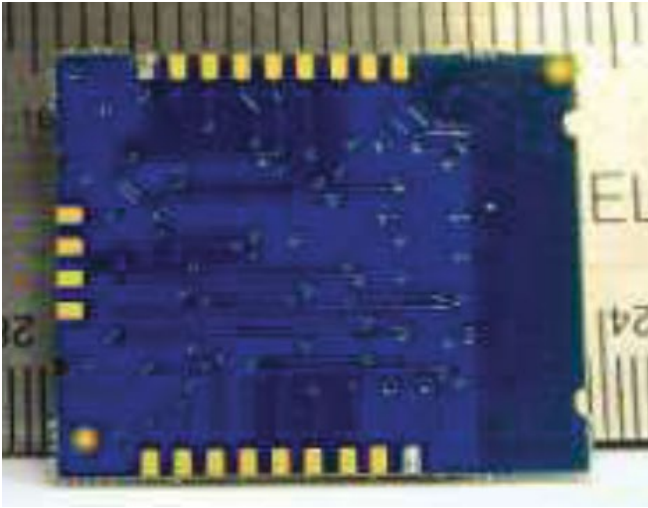
EXTERNAL PHOTOS	
Company Name	Vermeer Manufacturing Company
HVIN #	VERMEER2
FCC ID #	2AXF5-VERMEER2
IC #	26431-VERMEER2

Pluggable Through Hole (312000381)

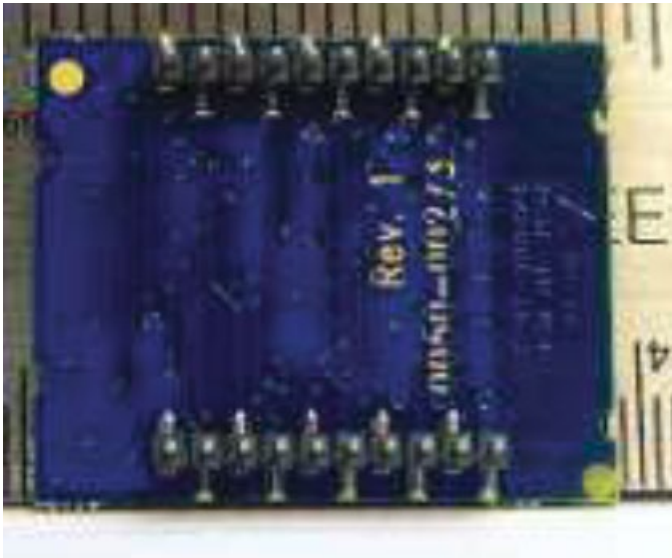


EXTERNAL PHOTOS	
Company Name	Vermeer Manufacturing Company
HVIN #	VERMEER2
FCC ID #	2AXF5-VERMEER2
IC #	26431-VERMEER2

Top side pluggable adapter stand

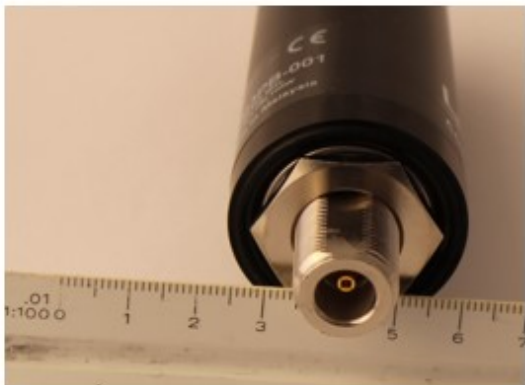


Bottom side adapter stand

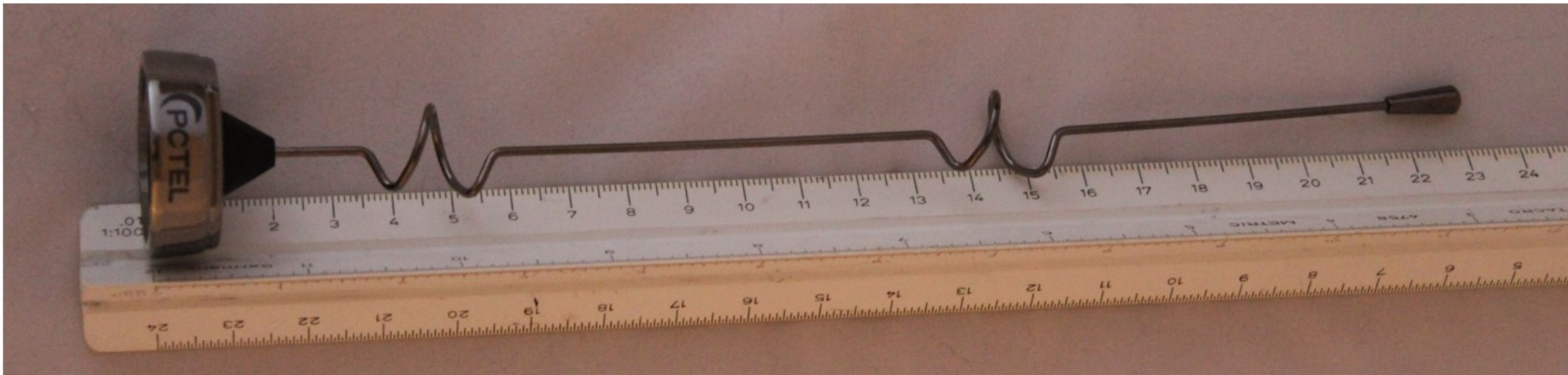


Side view

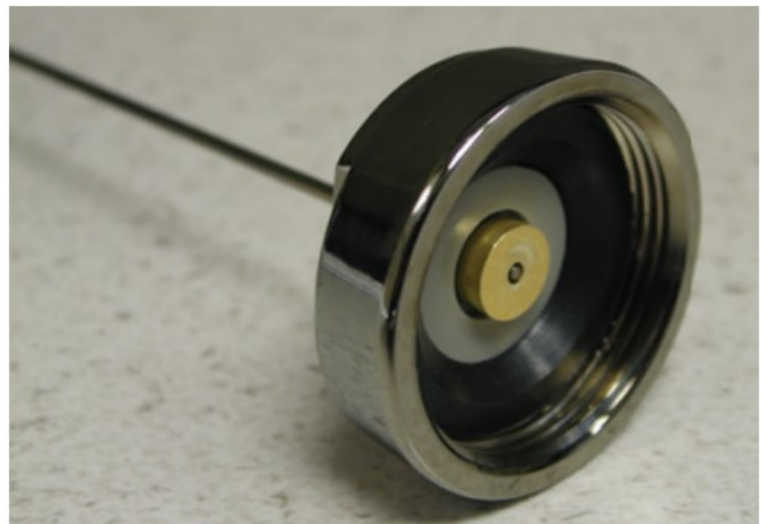




Laird TRA6927M3PB-001
N-Female Connector
Vermeer Part # 163722969
Peak Gain: 4.6dBi (2100 – 2700 MHz)
Max SWR: < 2.0:1.0



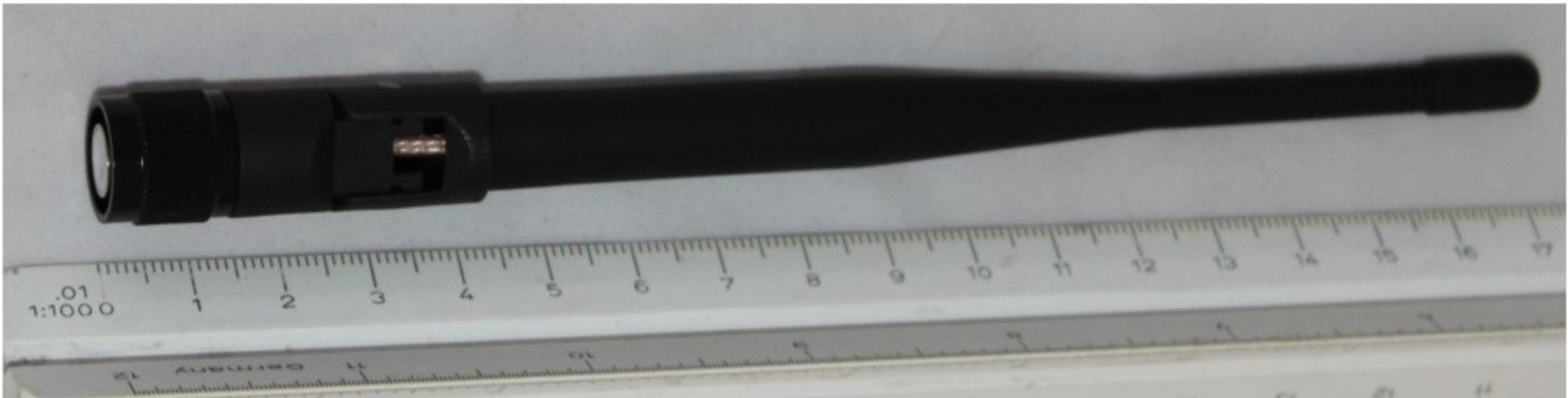
PCTEL Part # PCTCN24005
Vermeer Part # 296272382
Mount NMO
Gain 4.5dBi
VSWR <2.0:1

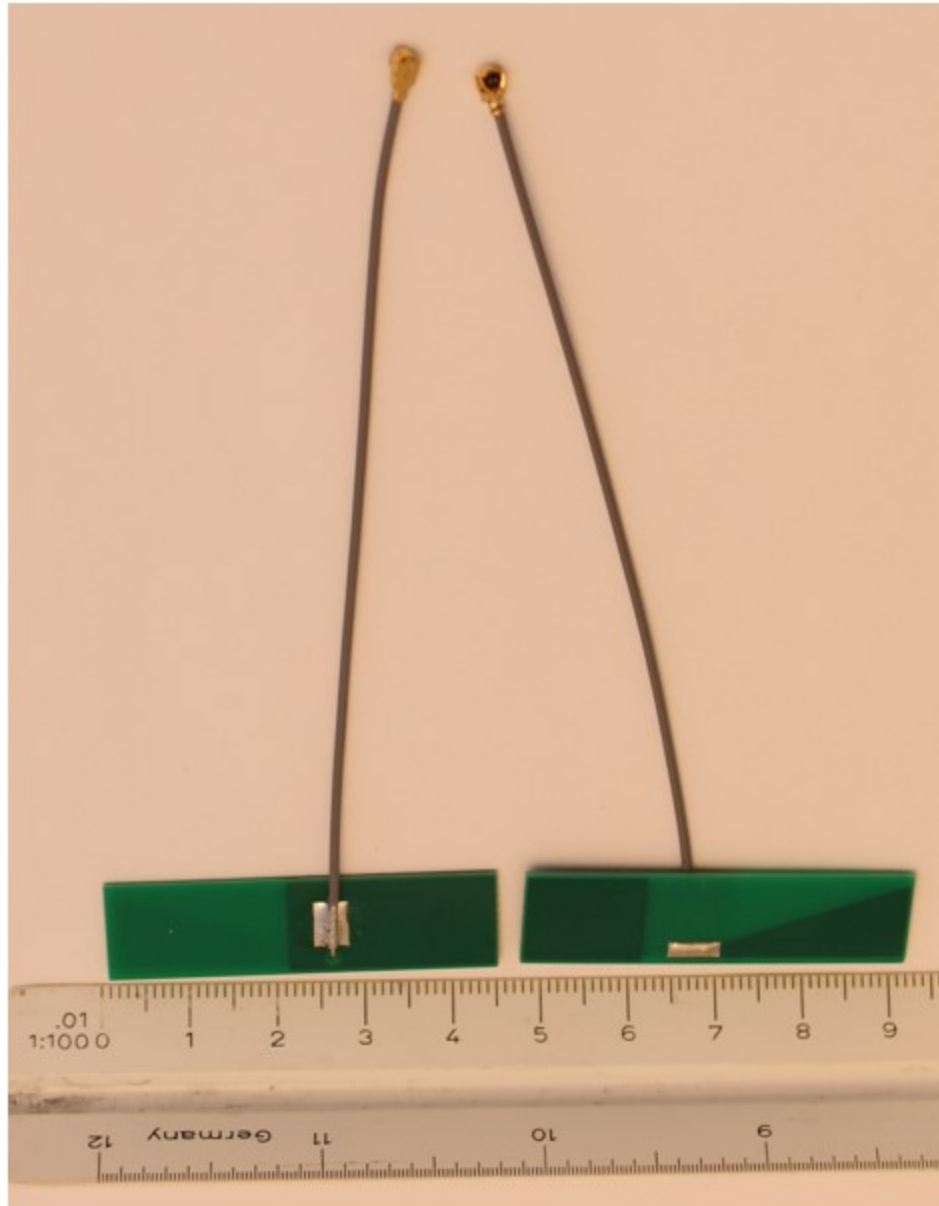




Pulse SPDA172400 TNC-Male
Articulated Dipole
Vermeer 296304935

- Gain 2dBi
- VSWR 2:1





Vermeer part number: 296521447

Laird antenna part number: MAF94045

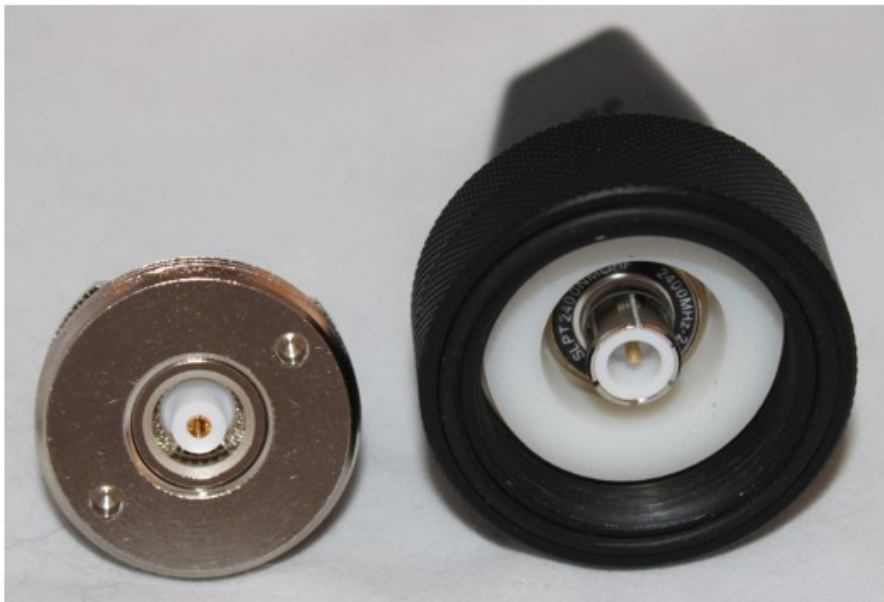
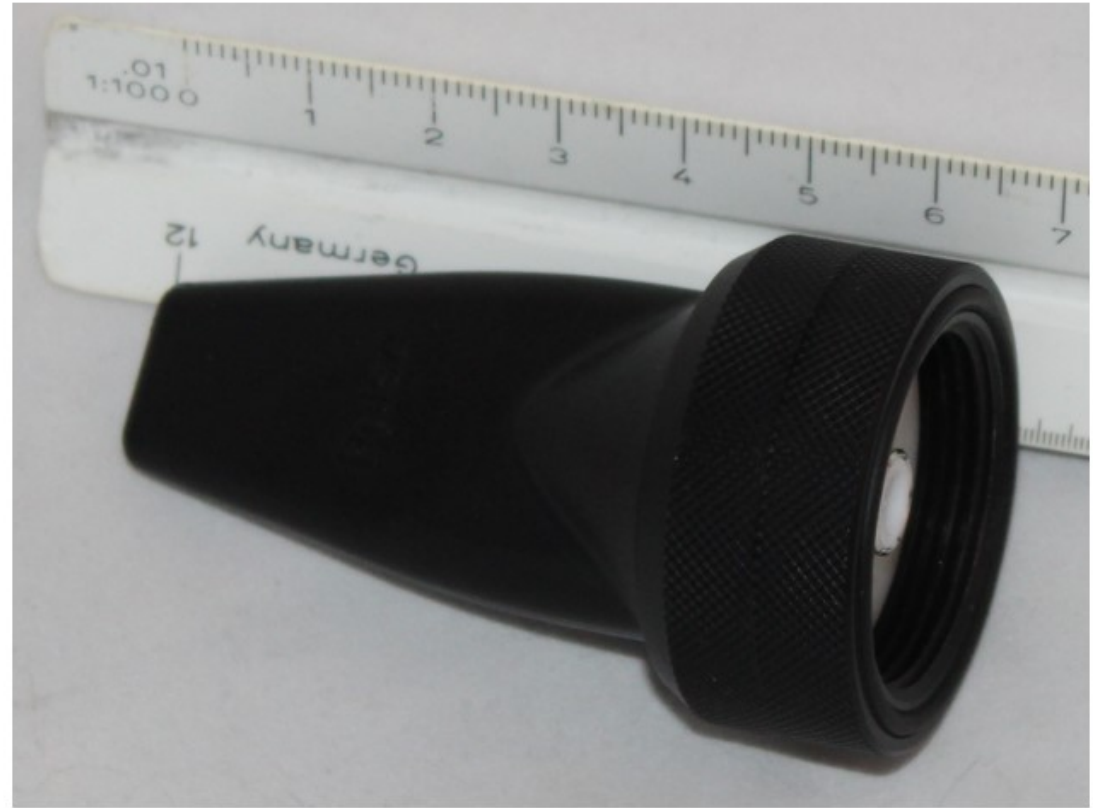
Type: PCB

Connector: U.FL

Peak Gain: 2dBi

Max VSWR: 2.5:1

Coax: Length 100mm; \varnothing 1.13mm



Pulse Larsen SLPT2400NMOHF "Shadow" Antenna with required NMOHF MID mount for reference (coax not installed).

- Peak Gain 5.06dBi
- Efficiency 79%
- VSWR 2:1
- Vermeer part number 296541293



Pulse-Larsen SLPT2400DMN (N-Female Connector)

Vermeer Part # 296541296

Gain: 4.8 dBi

MAX SWR: 2:1





Laird Part # TRAB24003P
Vermeer Part # 296541297

Mean Effective Gain: 3dBi
Max VSWR: <2.1
Connector: NF



Nearson Part # S181FL-5(178)-PX-2450S
Vermeer Part # 296541344 (substitute)

(Articulated joint immobilized with heat-shrink tubing in application. Non-swivel part is preferred.)

Dipole

Connector: U.FL / I-PEX

Coax: Length \approx 127mm; RG178

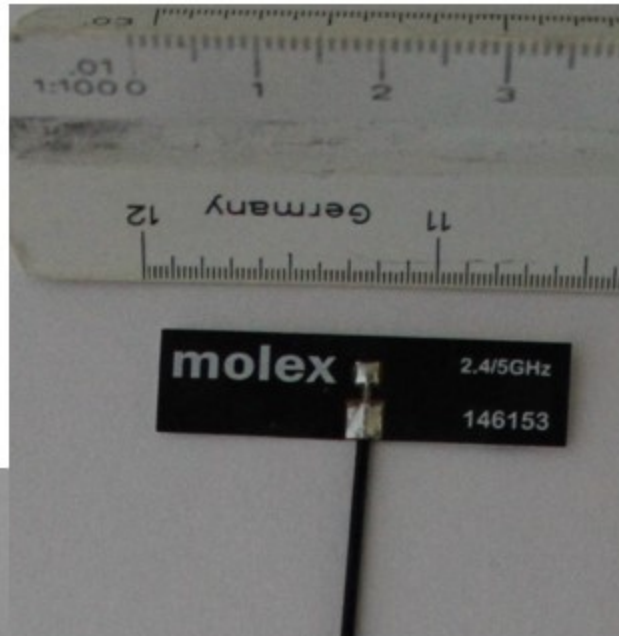
Peak Gain: 2dBi

Max VSWR: $<$ 2.0

Operating Frequency: 2.4 – 2.5 GHz

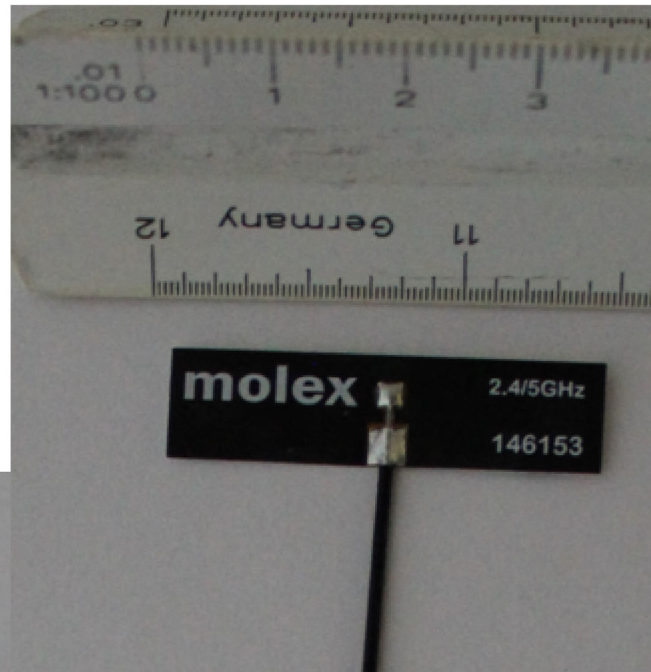
Note: *Quotation document* substitutes I-PEX connector for MMCX on drawing.





- Molex Balance Flex 1461530100
- 100mm Coax, U.FL
- Vermeer Part # 296541408
- Peak Gain 3.0dBi
- Efficiency >75% @ 2.4GHz





- Molex Balance Flex 1461530150
- 150mm Coax, U.FL
- Vermeer Part # 296541409
- Peak Gain 2.8dBi
- Efficiency >72% @ 2.4GHz





Nearson S181TC-2450 non-articulated dipole

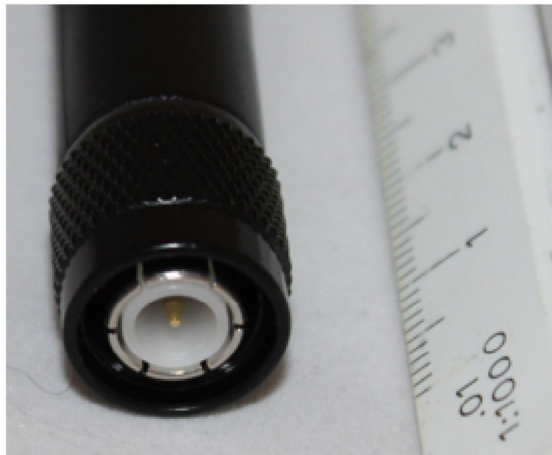
TNC-Male

(Note: design lacks typical coaxial shield around pin.)

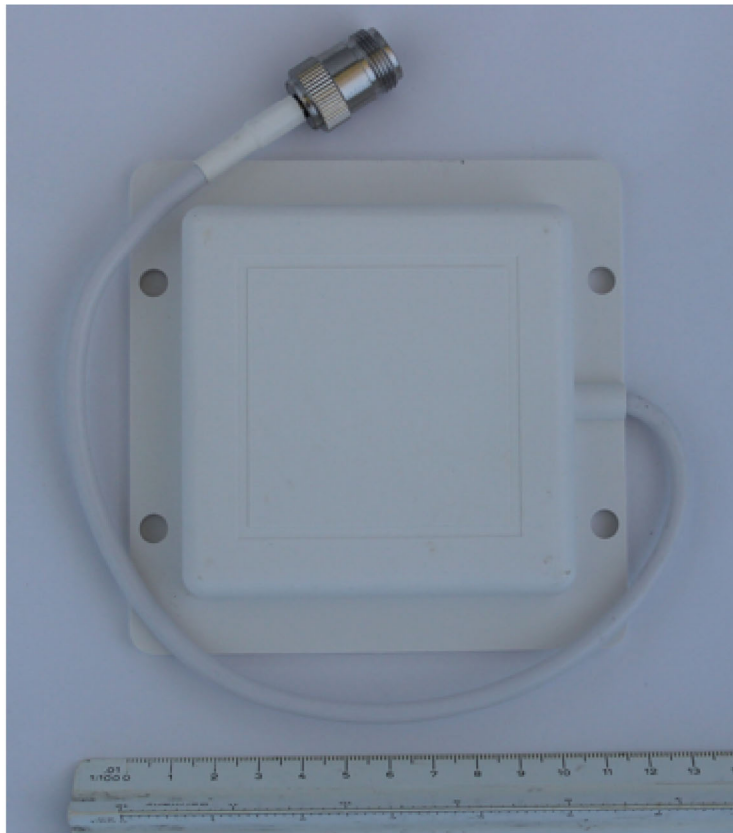
Gain 2 dBi

VSWR <2:1

Vermeer Part Number: 296575378

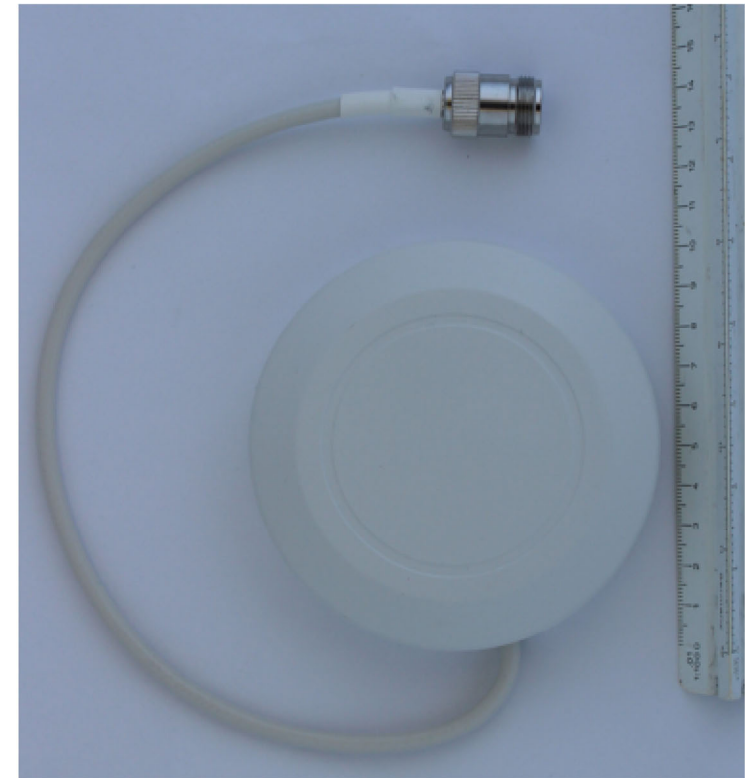
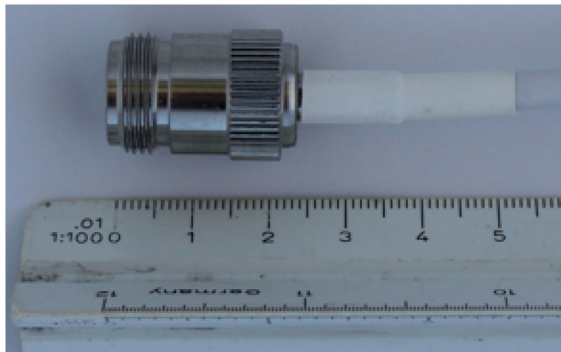


Nearson S151TC-2450 non-articulated
TNC-Male connector
Gain 5dBi
VSWR 2:1
Vermeer Part Number: 296575379



L-COM Part # HG2409P-NF
Vermeer Part # 296575413
Type: Square Patch w/ Radome
Gain: 8dBi , 2400 – 2500 MHz

Connector: N-Female on 25cm coax
VSWR: <1.5:1
Mount: Mast w/ U-Bolt Kit
Vertical 3dB Beamwidth: 65°
Horizontal 3dB Beamwidth 75°



L-COM Part # HG2408P-NF
Vermeer Part # 296575414
Type: Round Patch w/ Radome
Gain: 8dBi , 2400 – 2500 MHz

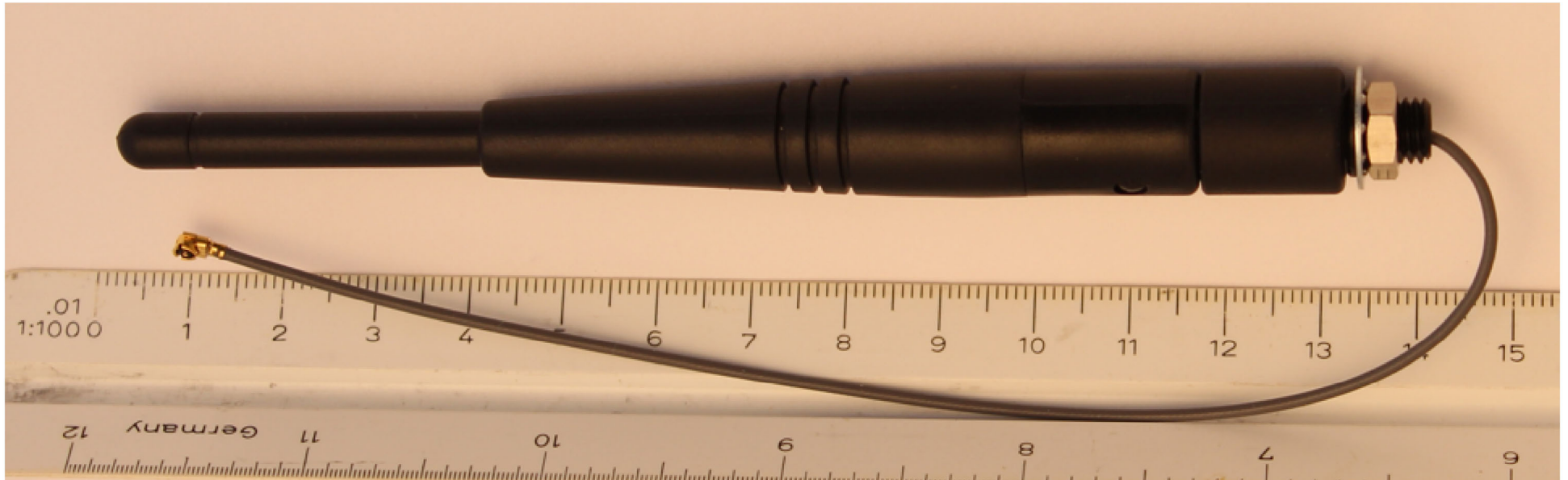
Connector: N-Female on 25cm coax
VSWR: <1.5:1
Mount: Mast w/ U-Bolt Kit
Vertical 3dB Beamwidth: 65°
Horizontal 3dB Beamwidth 75°



L-COM Part # HG2409Y-NF
Vermeer Part # 296575415
Type: YAGI w/ Radome
Gain: 9dBi , 2400 – 2500 MHz

Connector: N-Female on Coax
VSWR: <1.5:1
Mount: Mast w/ U-Bolt Kit
3dB Beamwidth: 60 degrees





Nearson part # S181FL-6-PX-2450S

Laird part # 0600-00040

Vermeer part # 296575416

Dipole with articulated joint

Connector: U.FL / I-PEX

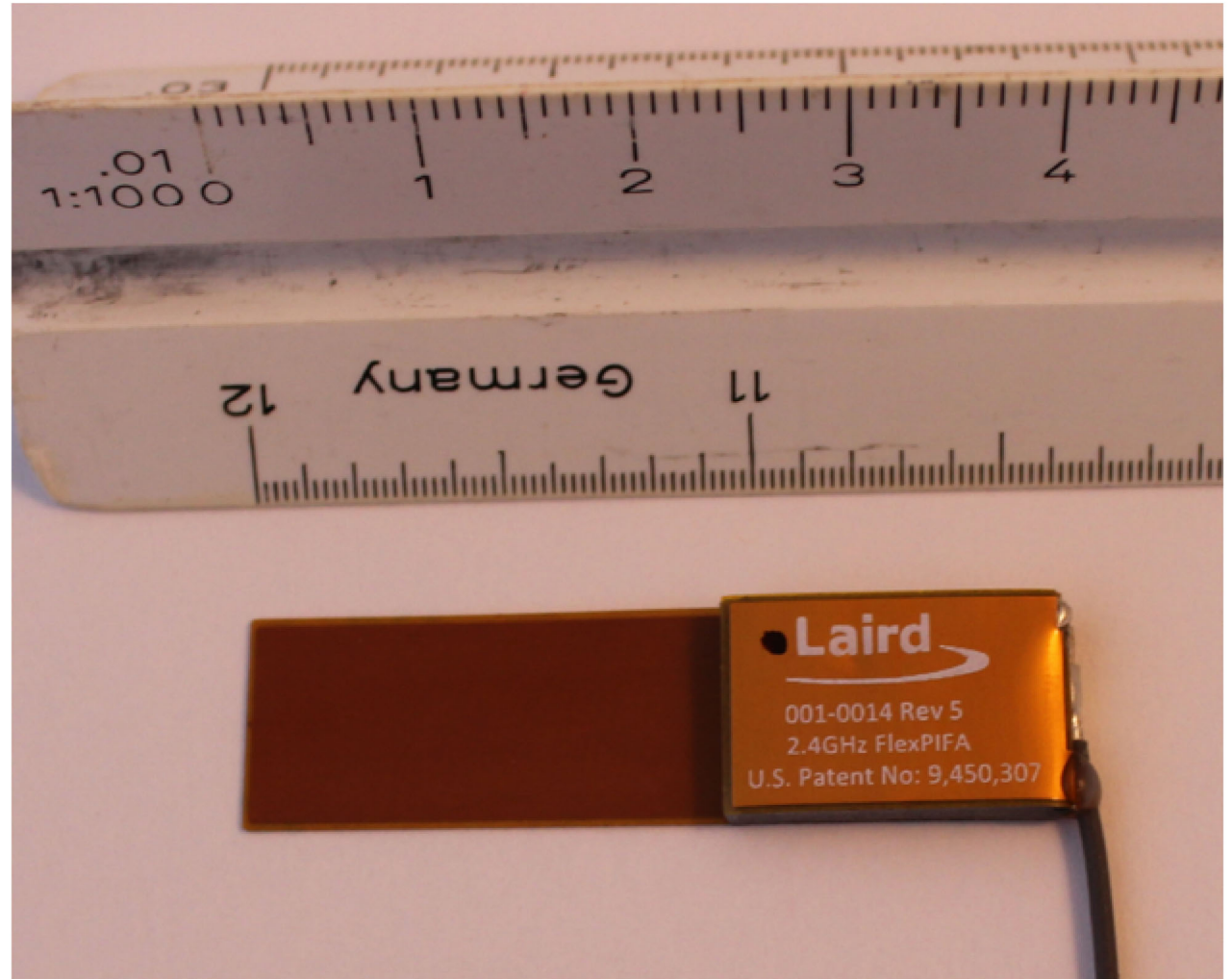
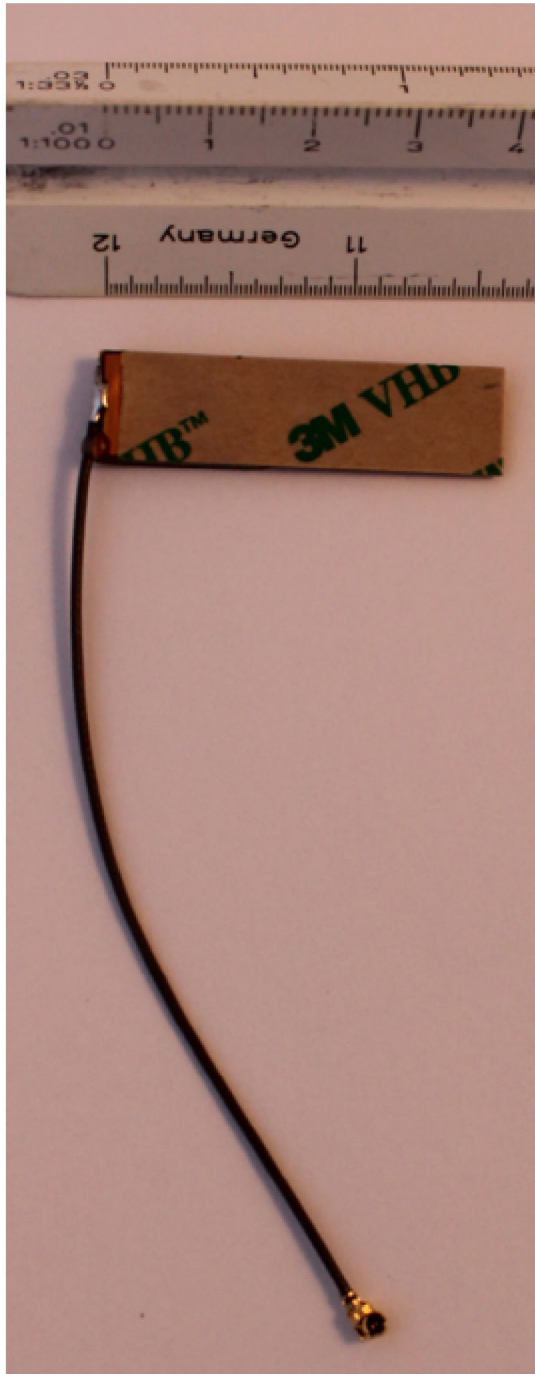
Coax: Length \approx 155mm; \varnothing 1.37mm

Peak Gain: 2dBi

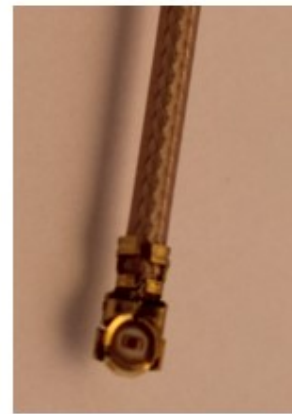
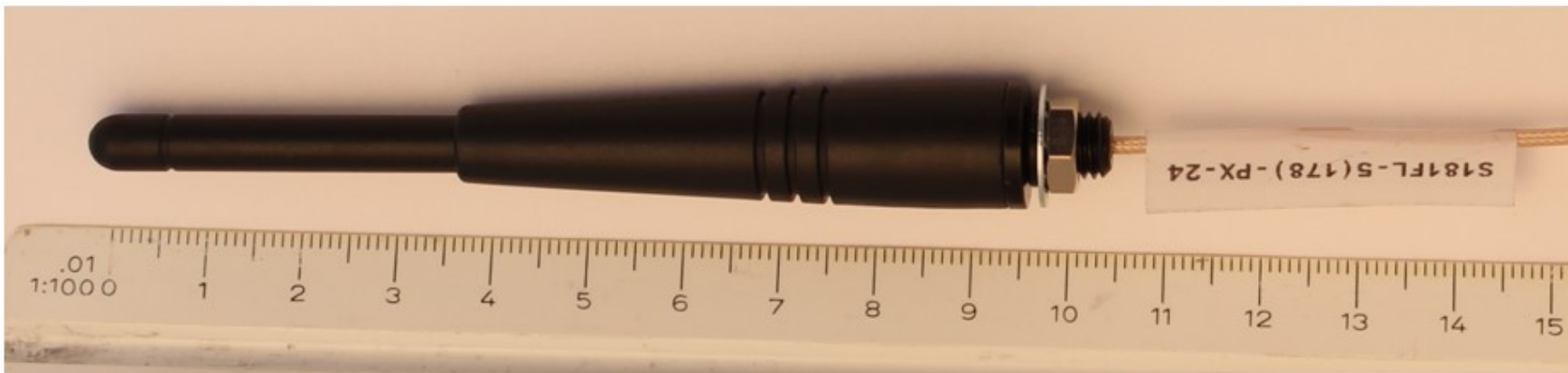
Max VSWR: \leq 2.0

Operating Frequency: 2.4 – 2.5 GHz

(See letter from Laird identifying Nearson part number.)



Laird FlexPIFA 001-0014, U.FL connector, 100mm cable
Vermeer Part # 296575417
Peak Gain: 2 (flexible planar inverted-F antenna)
VSWR <2:1



Nearson Part # S181FL-5(178)-PX-2450

Vermeer Part # 296541344

Dipole (with articulated joint append "S" to Nearson Part #)

Connector: U.FL / I-PEX

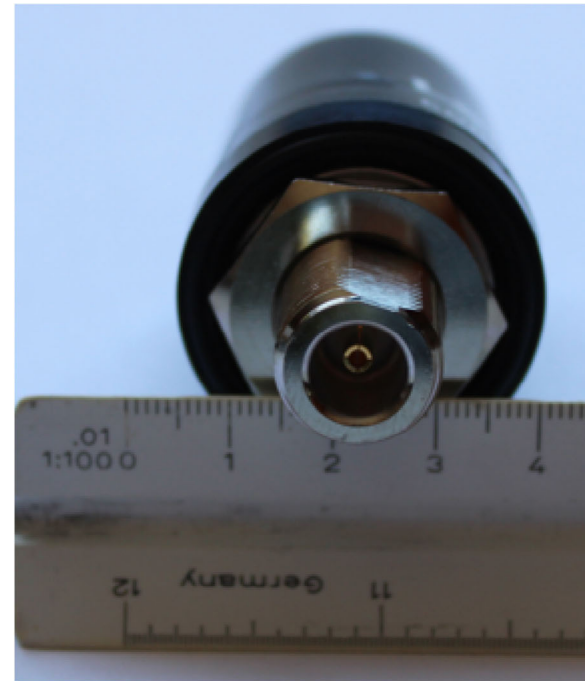
Coax: Length \approx 127mm; RG178

Peak Gain: 2dBi

Max VSWR: < 2.0

Operating Frequency: 2.4 – 2.5 GHz

Note: *Quotation document* substitutes I-PEX connector for MMCX on drawing.



Laird Part # TRAB24003NP
(No Ground Plane version)
Vermeer Part # 296589356

Mean Effective Gain: 3dBi
Max VSWR: <2.1
Connector: NF