



深圳市鑫恒阳科技有限公司

<https://www.xhy-2008.com>

承 认 书

SPECIFICATION FOR APPROVAL

客户名称 Customer Name: 深圳市积加创新技术有限公司

产品型号 Product Model: CQ425

客户料号 Customer P/N:

鑫恒阳料号 XINHENGYANG P/N: CP. 22. 0000001

产品规格 SPECIFICATIONS: WIFI 2.4G

制作日期 Production date: 2024. 7. 3

封样版本 Sample Version: V1

鑫恒阳 (XINHENGYANG)		
编制 (FICTION)	结构 (Structure)	研发 (R&D)
客户 (Customer)		
采 购 (PUR)	品质 (QC)	研发 (R&D)

生产厂商: 深圳市鑫恒阳科技有限公司

深圳地址: 深圳市南山区西丽街道创盛路 1 号康和盛大厦 7A-909

电 话: 0755-83600916 邮箱: xinhengyang1116@163.com

网 址: <https://www.xhy-2008.com>



深圳市鑫恒阳科技有限公司

<https://www.xhy-2008.com>

Number	Effective date	Change record
V1.0	2023-10-30	Initial release
V2.0	2023-12-13	Change antenna
V3.0	2024-3-13	Change cable
V4.0	2024-4-16	Change shell color
V5.0	2024-7-3	Change line length



一、基本参数

A. Electrical Characteristics	
Frequency	2400MHZ-2500MHZ
VSWR	< 2.0
Avg Efficiency	>69%
Impedance	50 ± 25 Ohm
Polarization	Linear
Peak Gain	2400MHZ:3.85dBi
B. Material & Mechanical Characteristics	
Material of Radiator	FPC black
Cable Type	一代
Connector Type	线径: 1.13 L=290MM, 外漏 210MM
Dimension	/
C. Environmental	
Operation Temperature	- 20 °C ~ + 60 °C
Storage Temperature	- 30 °C ~ + 70 °C



二、电性规格

Those specifications were specially defined for CQ425 model.

三、VSWR

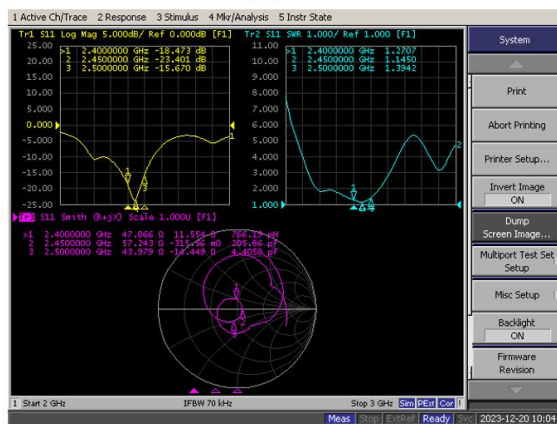
1 测量方法

1.A 50 Ω coaxial cable is connected to the antenna. Then this cable is connected to a network analyzer to measure the VSWR

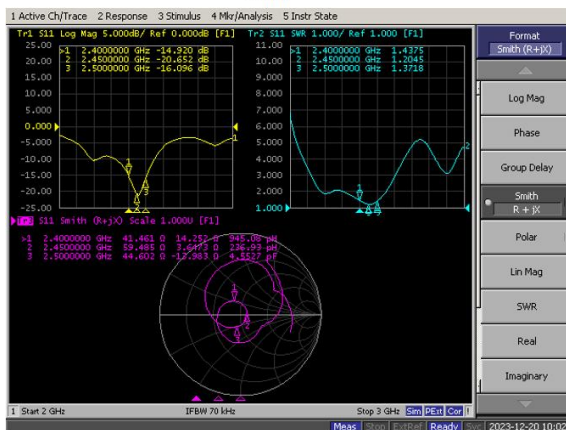
2.Keeping this jig away from metal at least 20cm

2 测量频率点和驻波比

水平



垂直





深圳市鑫恒阳科技有限公司

<https://www.xhy-2008.com>

四、暗室简介

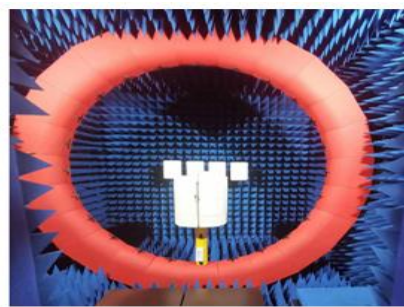
Introduction:

Microwave darkroom and no reflection chamber, absorbing short wave darkroom dark room. Microwave darkroom by electromagnetic shielding room, filtering and isolation, grounding device, the ventilation duct, indoor distribution system, monitoring system, ceiling wave material part. It is based on the wave absorbing material as the lining of the shield room, it can absorb the most of the electromagnetic energy into the six wall is a better simulation of the free space conditions.

The main working principle of microwave anechoic chamber is according to the electromagnetic wave in the medium from the low magnetic guide magnetic direction of propagation rules, absorbing materials to guide the electromagnetic wave using high permeability, through resonance, a substantial absorption of electromagnetic wave radiation energy, by coupling the electromagnetic energy into heat energy.

main performance :

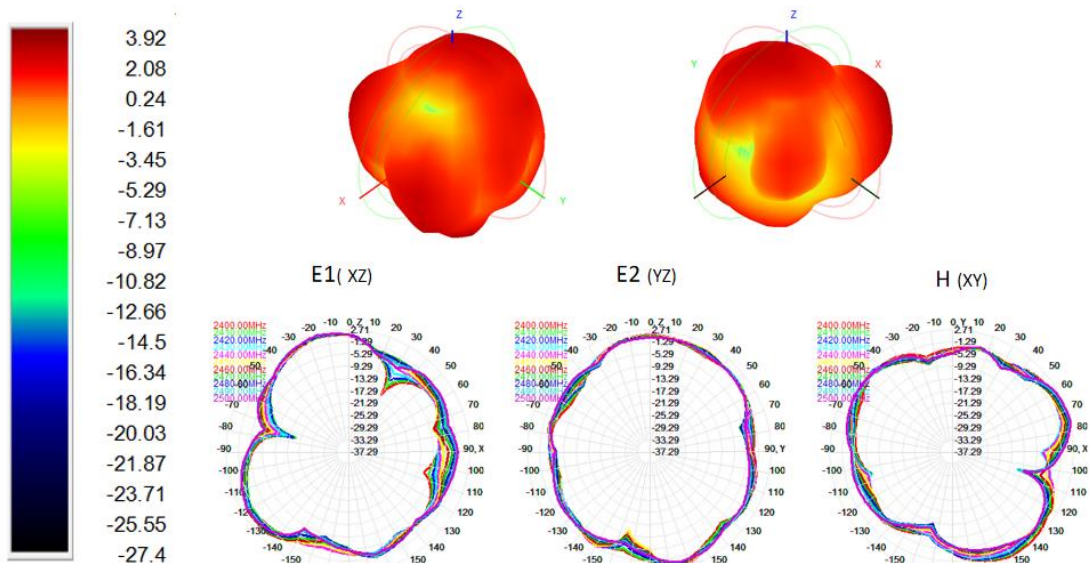
Frequency range:400MHz ~ 6GHz ceiling reflected wave loss materials: 400MHz ~ 6GHz is equal to or more than 15dB (microwave absorbing material by composite wave absorbing materials, namely tapered containing carbon sponge suction wave material paste in ferrite)



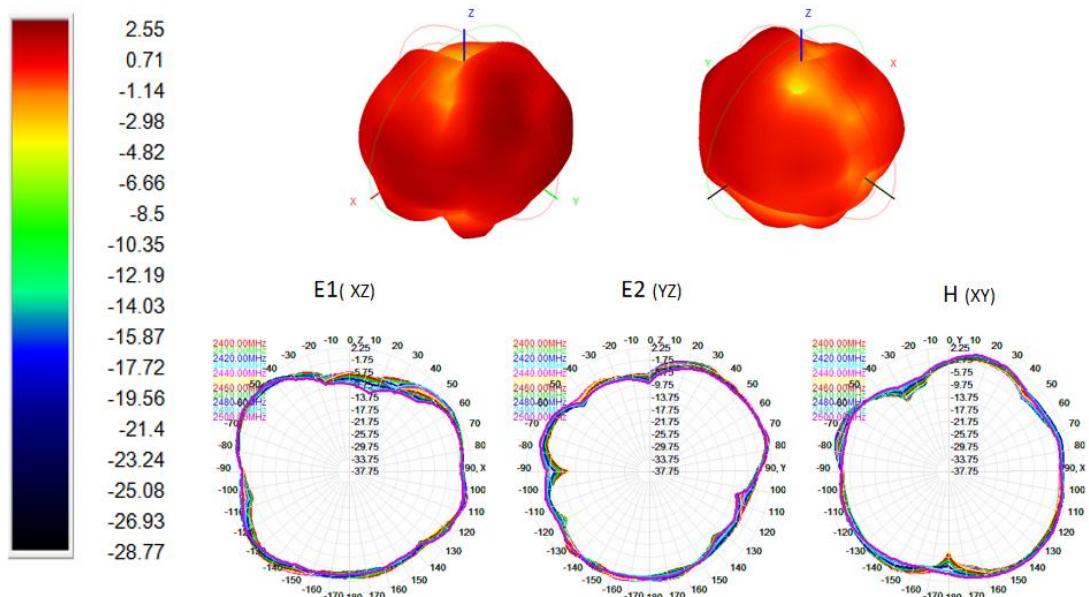
五、天线性能

无源场型图-2400MHZ-2500MHZ

水平方向



垂直方向





深圳市鑫恒阳科技有限公司

<https://www.xhy-2008.com>

无源效率增益

水平			垂直		
Freq (MHz)	Effi (%)	Gain (dBi)	Freq (MHz)	Effi (%)	Gain (dBi)
2400	70.56	2.92	2400	71.80	2.55
2410	70.59	3.06	2410	73.40	2.53
2420	72.05	3.38	2420	75.83	2.84
2430	72.22	3.48	2430	76.41	3.16
2440	74.36	3.63	2440	77.43	3.28
2450	74.52	3.51	2450	74.89	2.96
2460	74.87	3.55	2460	72.93	2.45
2470	74.69	3.53	2470	71.63	2.35
2480	75.20	3.54	2480	71.23	2.34
2490	75.68	3.53	2490	70.09	2.31
2500	76.15	3.85	2500	69.00	2.36

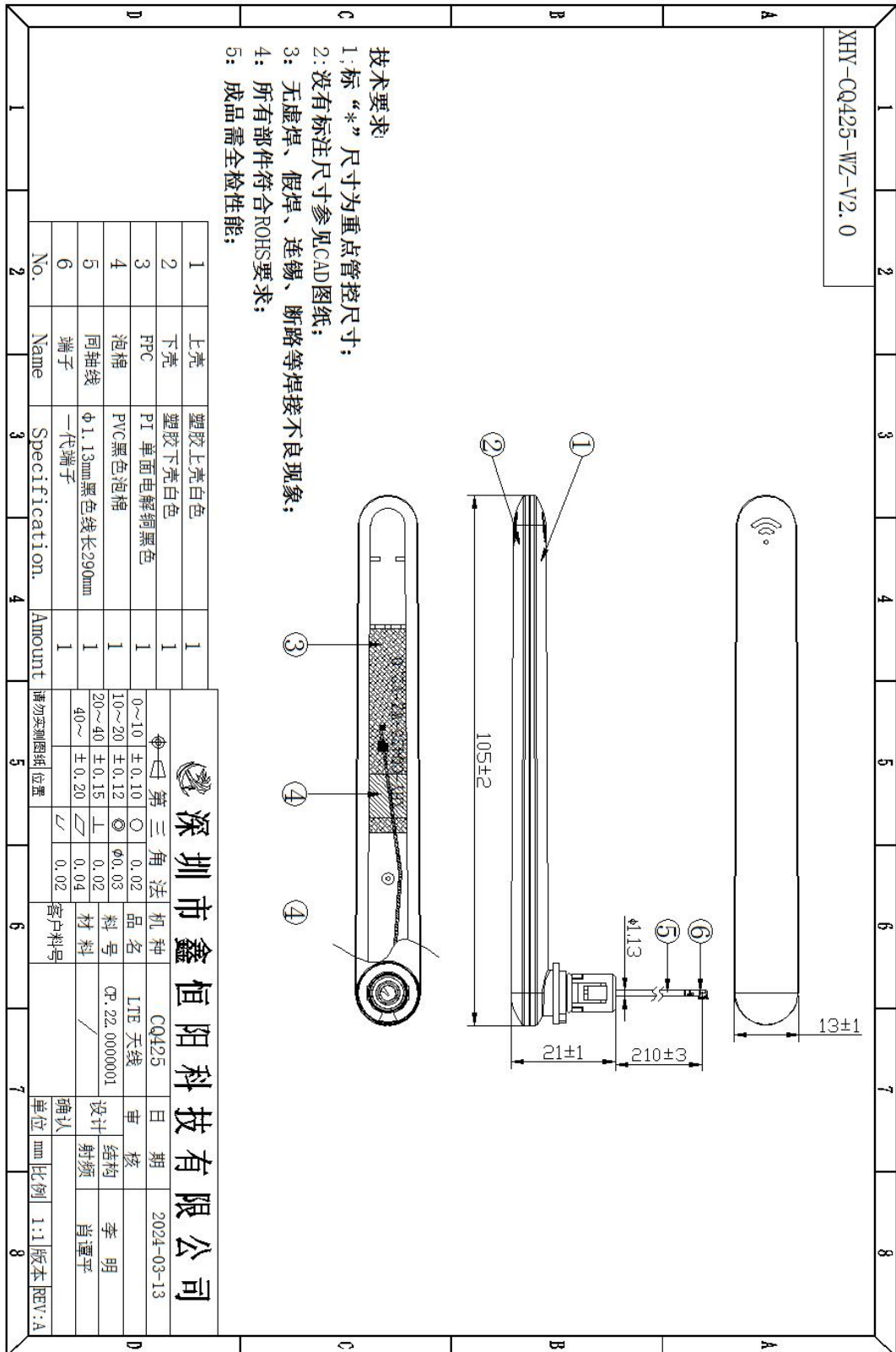
OTA 有源

B模					
水平			垂直		
BAND	TRP (dBm)	TIS (dBm)	BAND	TRP (dBm)	TIS (dBm)
1	13.08	-88.79	1	12.85	-88.38
6	13.43	-88.09	6	13.27	-88.40
11	13.08	-87.36	11	13.20	-86.68

六，天线装配图



七、天线图纸尺寸





深圳市鑫恒阳科技有限公司

<https://www.xhy-2008.com>

八、ROHS

Antenna CP. 22. 0000001 meets RoHS requirements.

九、产品包装说明

A. packing should meet the moistureproof, vibration, pressure and mildew proof, etc.

B. the smallest packing unit logo must have the manufacturer trademarks, product model, name, code and quantity.

C. in the attached packing list, certificate of approval, and the factory inspection report.

*****END*****