



深圳市雨盛通讯电子有限公司

Shenzhen Yu Sheng Communications Electronics co., LTD

Acknowled
APPROVAL

版本: A1

Client

:

Product Specifications

DESCRIPTION:

料 号

PART NO.:

YS030-0055

客户料号

CUS PART NO.:

日 期

D A T E:

2020-4-18

呈样签章:

工 程 ENGINEERING DEPARTMENT	品 保 Q C DEPARTMENT	业 务 SALES DEPARTMENT

客户承认签章 :

工 程 ENGINEERING DEPARTMENT	品 保 Q C DEPARTMENT	采 购 PURCHASING DEPARTMENT

※Customer confirmation sample attachment column:

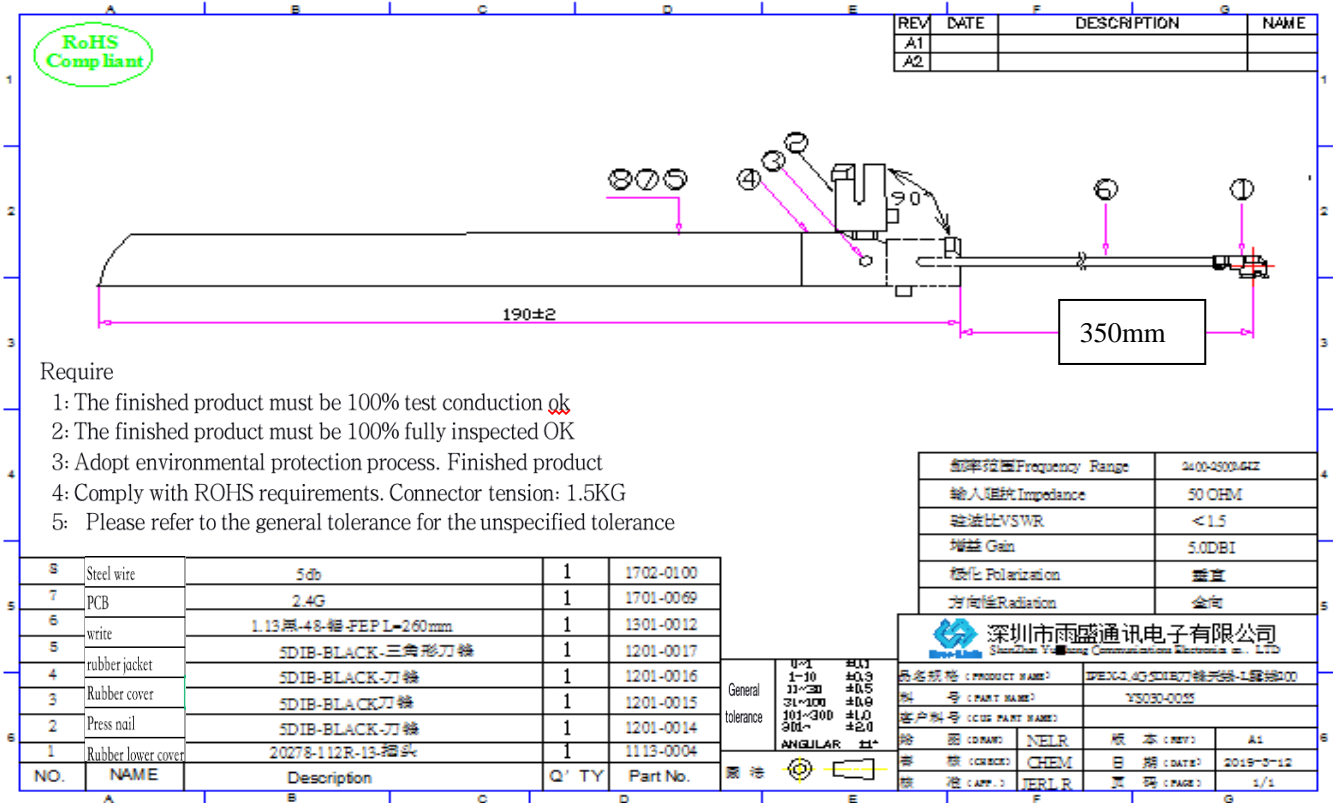
Electrical technical parameters

电性能指标		Electrical Specifications	
频率范围	2400-2500MHZ	Frequency Range	2400-2500MHZ
电压驻波比	≤2.0	VSWR	≤2.0
增益	5DBI	GAIN	5DBI
输入阻抗	50 Ω	Input Impedance	50 Ω
机械指标		Mechanical Specifications	
天线颜色	白色	Antenna Color	WHITE
接口形式	IPEX	Input connector	IPEX
天线长度	350mm	Cable length	350mm
工作温度	-40℃~+85℃	Working Temperature	-40℃~+85℃
工作湿度	20~80%	Working Humidity	20~80%

Product Image:



Product specification chart:



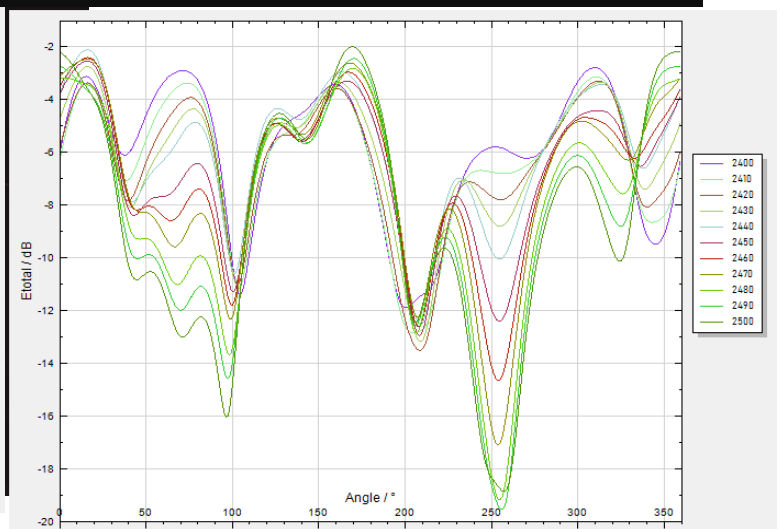
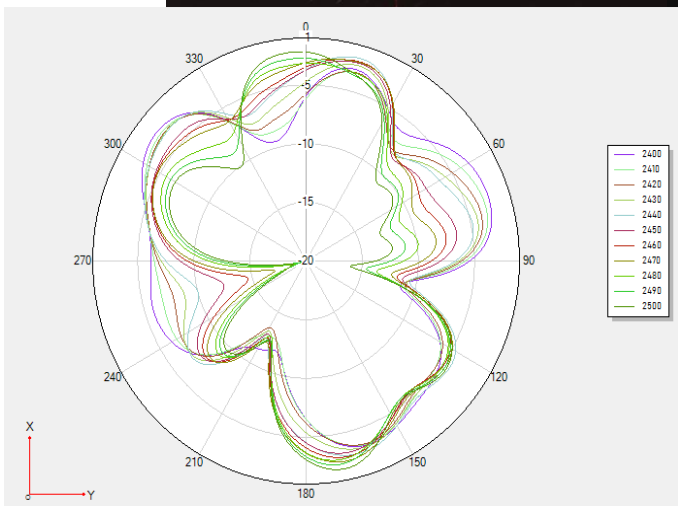
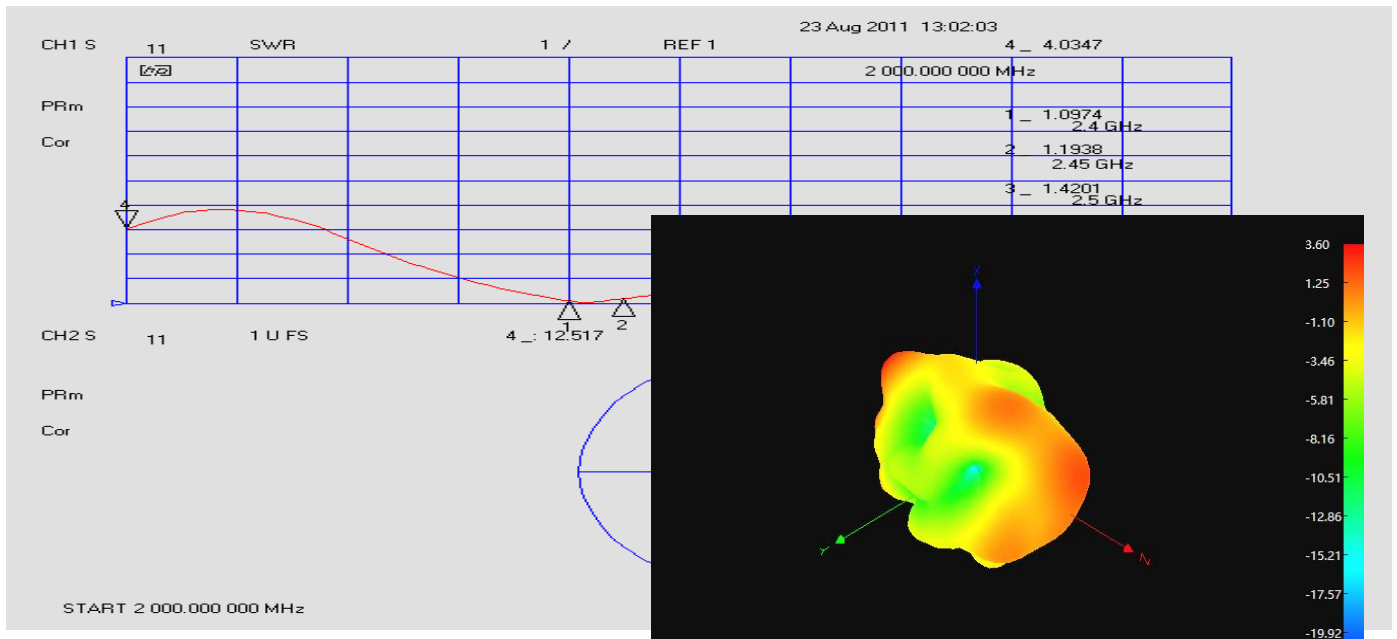
Environmental Performance Test:

project	Test Conditions	Specificati on
storage environment	Test the temperature, humidity, and air pressure in the absence of specification as follows: 1. The temperature is -30°C~+80°C 2. The relative humidity is 45%-85% 3. Air pressure is 86kpa-106kpa	Electrical and mechanical properties are normal
High and low temperature test	5 cycles between 70° C and 40° C, then under normal conditions 1-2H, check the appearance quality. .	Dimensions shall meet the requirements and shall meet the In terms of mechanical and electrical properties
Resistance to constant humidity and heat test	Relative humidity 95±3%, test temperature: 40° C. After 2H continuous action, Measure the electrical properties within 5 minutes after the sample is taken out, and the sample is under normal conditions Under 1-2H, check the appearance quality	Dimensions shall meet the requirements and shall meet the In terms of mechanical and

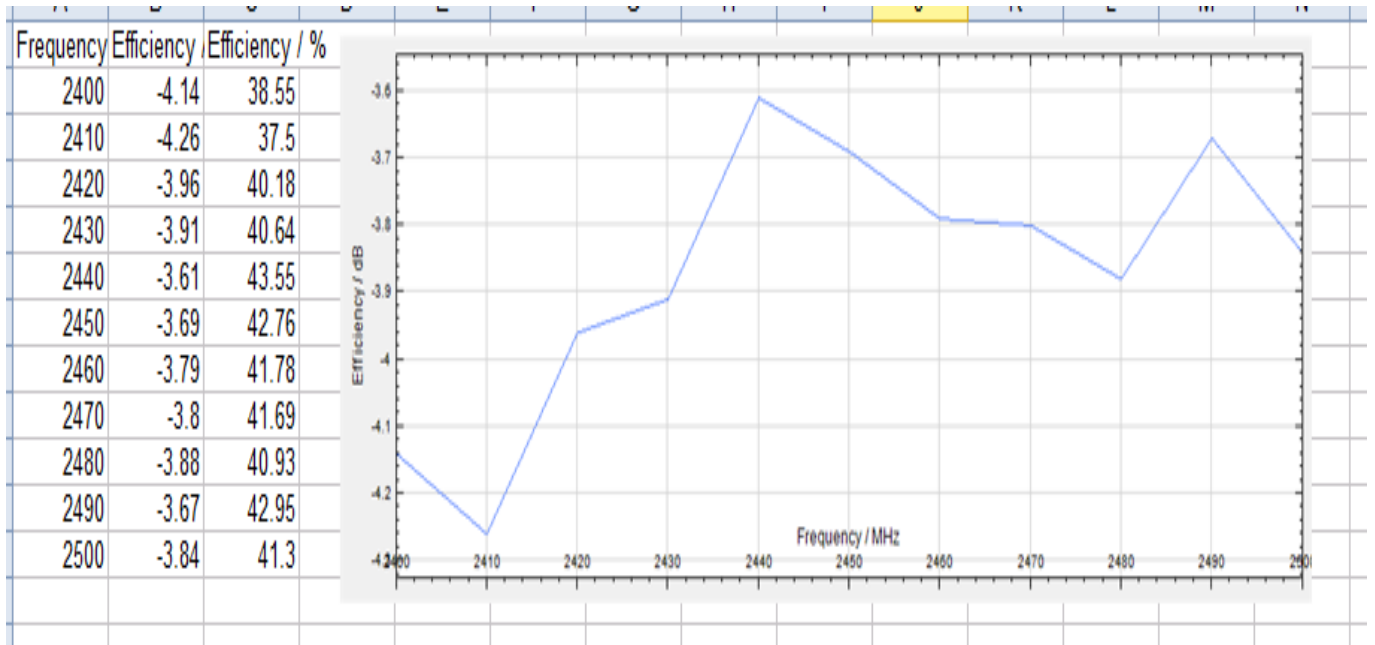
		electrical properties
Vibration test	Vibration frequency range 10-55HZ, displacement amplitude: 0.35MM, acceleration amplitude: 50.0M/S, frequency sweep cycles: 30 times	Electrical and mechanical properties are normal
drop test	Free fall 3 times from a height of 1M in the direction of mutually perpendicular axes	Electrical and mechanical properties are normal

Web Analysis

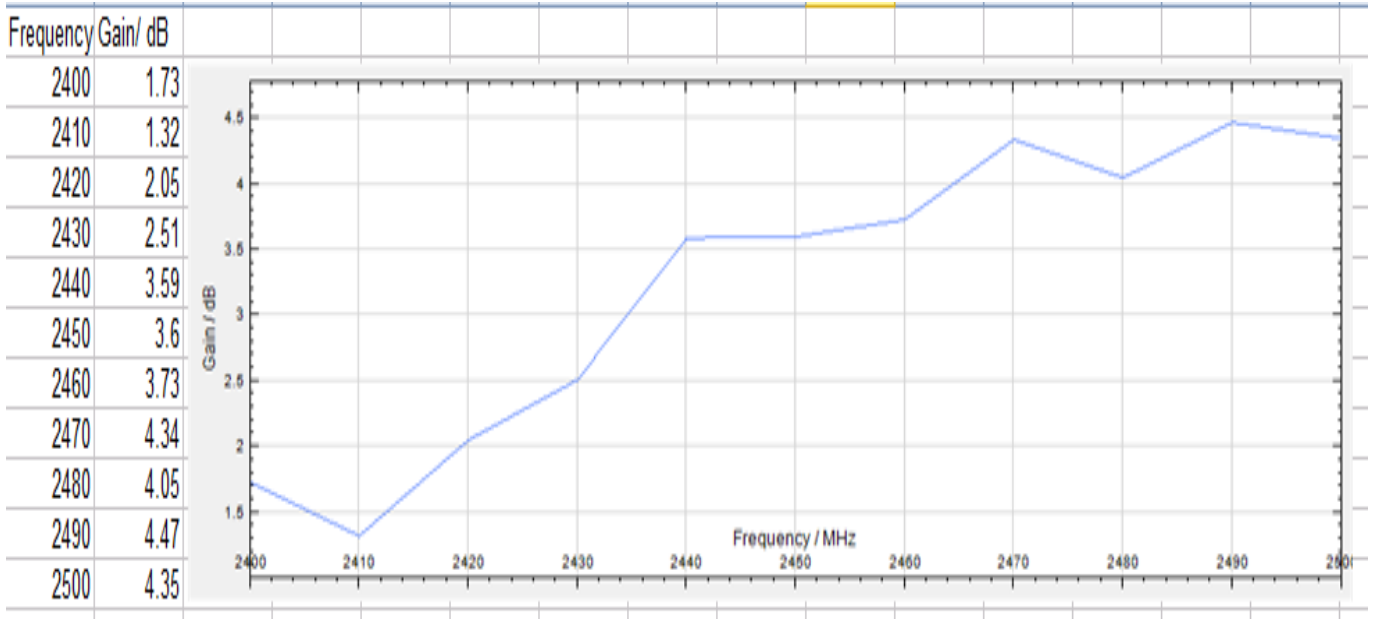
Test:



efficiency:

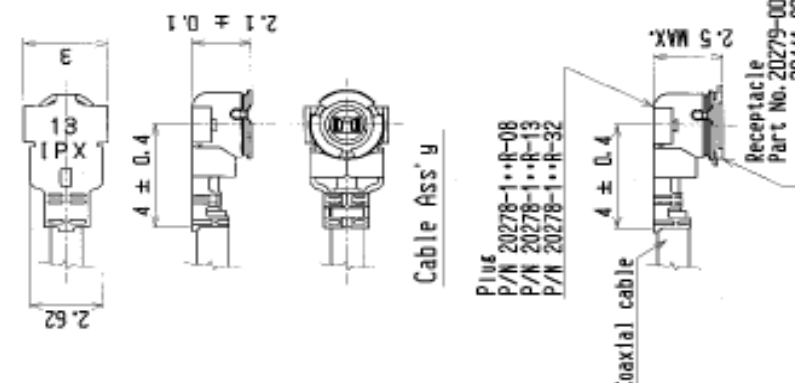


Gain:



Material Data Sheet

MHF Connector



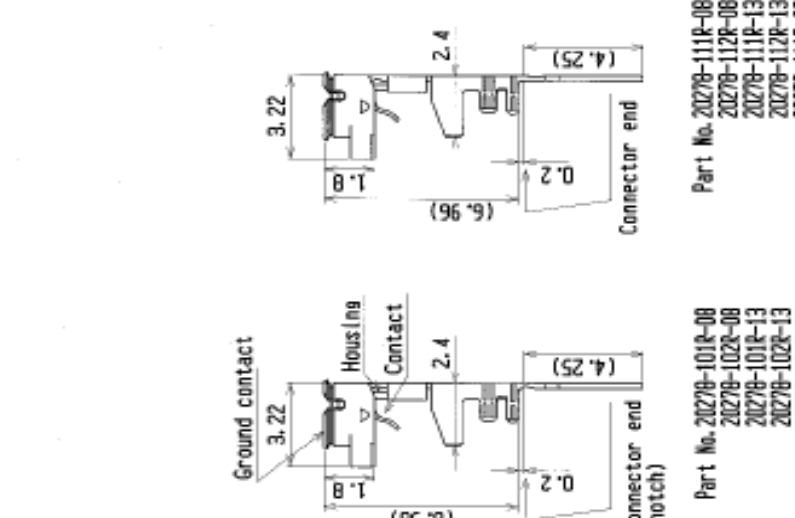
Cable Assy

Plus
P/N 20278-10R-08
P/N 20278-10R-13
P/N 20278-10R-32

Coaxial cable

Receptacle
Part No. 20279-001E-01
20441-001E-01

MATING



Connector end

Part No. 20278-111R-08
20278-112R-08
20278-111R-13
20278-112R-13
20278-111R-32
20278-112R-32

For seal auto termination machine (without notch)

Connector end (notch)

Part No. 20278-101R-08
20278-102R-08
20278-101R-13
20278-102R-13
20278-101R-32
20278-102R-32

For hand tool (with notch)

GENERAL TOLERANCE

6 MAX. ±0.2

6 OVER MAX. 30 ±0.3

30 OVER MAX. 120 ±0.5

ANGLE ±2°

DESIGNER	K. Ohbayashi	DATE	JUN/13/01
CHK	T.H	DATE	
APP	K. Katabuchi	DATE	JUN/13/01
PROJ	CUSTOMER	PROJECTION	1/1
REV	RECORD	SCALE	6/1 mm
SERIES No.	2814	UNIT	mm
COPY		NO.	20278
		REV.	General
		SHEET	1/4
		REV.	19C

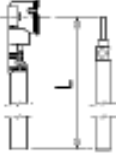
WAS T

FORM REV. 4

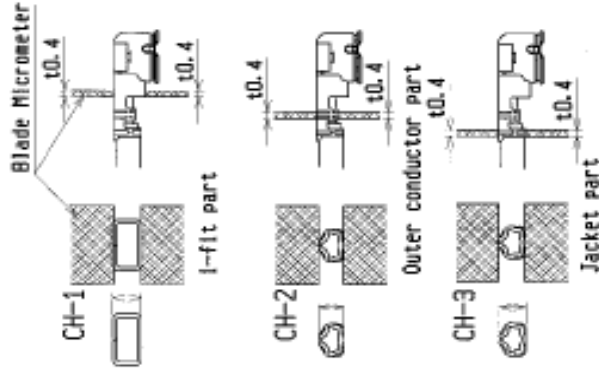
PART NO.
20278-10R-13

Part No. of non halogen free type	20278-101R-00	20278-101R-08	20278-101R-13	20278-101R-32	20278-101R-18
Part No. of halogen free type	20278-102R-08	20278-102R-13	20278-102R-13	20278-102R-32	20278-102R-18
Housing color	White	White	Black	Black	White
Applicable cable nominal dimension	2.09±0.1 1.25±0.1	2.09±0.1 1.25±0.1	2.09±0.1 1.25±0.1	2.09±0.1 1.25±0.1	2.09±0.1 1.25±0.1
Inner conductor	φ0.4 Nominal	φ0.4 Nominal	φ0.68 Nominal	φ0.66 Nominal	φ0.84 Nominal
Dielectric core	NC#3617/05	NC#3217/05	NC#3217/08	NC#3217/08	NC#3017/0102
Outer conductor plating or tin	φ0.65 Nominal	φ0.65 Nominal	φ0.93 Nominal	φ1.12 Nominal	φ1.8 Nominal
Jacket	φ0.81 Nominal	φ0.81 Nominal	φ1.13 Nominal	φ1.32 Nominal	φ1.8 Nominal
Braded shield of outer conductor 外部導体の編組	Single / 1層編組	Single / 1層編組	Single / 1層編組	Double / 2層編組	Single / 1層編組
P/N of seal auto hand Tool	90187-008C	90187-013C	90187-013C	90187-032C	90233-018
P/N of seal auto termination machine	90213-008C	90213-013C	90213-013C	90213-032C	90232-018
Sect. M-M	1.68	2.24	2.24	2.29	2.71
Sect. L-L	1.72	2.28	2.28	2.37	3.1
Crimp Height	1.34~1.40	1.34~1.40	1.34~1.40	1.34~1.40	1.34~1.40
	0.76~0.84	1.06~1.14	1.06~1.14	1.20~1.30	1.41~1.49
	0.85~0.97	1.15~1.35	1.15~1.35	1.26~1.46	1.70~1.80

Cable cut length



Crimp Height



I-PEX Interconnect and Protelium Electronics TOKYO, JAPAN

TITLE: General

REV. ECN: 01, BY: [blank], DATE: [blank], APP: [blank]

REV. RECORD: [blank]

SERIES No.: 2814

CUSTOMER: [blank]

PROJECTION: [blank]

SCALE: UNIT: mm

DWG. No.: 20278

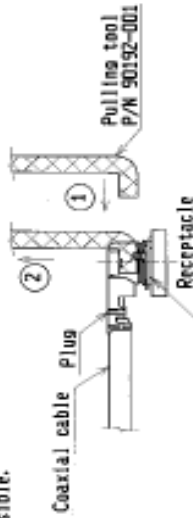
SHEET: 3/4

REV.: 19C

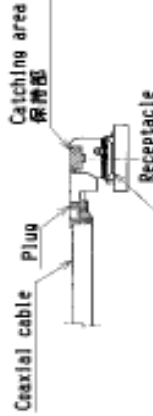
NOTE-1
中心導体、外部導体への半田コティングは不可
Must not use solder coated
inner conductor and outer conductor.

5-2 Unmating.

(1) In case of unmating by pulling tool.
Please use the pulling tool as the following drawing, and please pull plug to vertical direction as directly as possible.



(2) In case of unmating directly by hand
Please catch the catching area of plug, and please pull plug to vertical direction as directly as possible.



5-3 Clamp over standards of outer conductor
外導体はみだし量規定 : 外導体標準ターナル本数の10%以下 (外導体標準ターナルの本数のみ出し量)

Standards: Less than 10% from total numbers of outer conductor
(Numbers of outer conductor's clamp over from outer conductor's barrel)

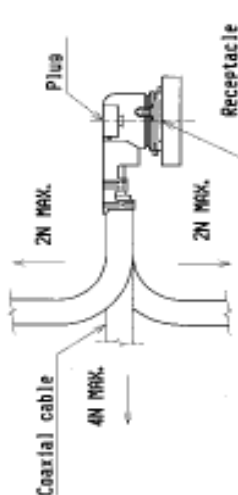
5-4 Caution about Heat shrinkage tubes
Please be careful not to melt housing when using heat shrinkage tubes. It will become cause of open circuit.

5-4 熱収縮チューブについて
熱収縮チューブで外導体保護を施す場合は、熱収縮管の周囲にのみならず、挿入部のハウジングを溶融させないよう注意してください。
6. 本コネクタは 'Pb-free' である

6. This is 'Pb-free' connector.

Notes

- Material
(1) Housing : PBT, UL94V-0
(2) Contact phosphor bronze
gold plating 0.1 μ m MIN.
over nickel 1.27 μ m MIN.
(3) Ground contact phosphor bronze
gold plating 0.05 μ m MIN.
over nickel 1.27 μ m MIN.
2. Packing : reel
3. Mating partner part No. : 20279-001E-01, 20441-001E-01
4. Permissible load of cable at mating



5. Suggestions for mating & unmating operation.

5-1 Mating.
Please mate the connector straightly to vertical direction as much as possible, adjusting the mating axis of plug and receptacle.
As excessive slant angle mating may break the connector, please don't do it.

5. コネクタの挿入および抜き取りの注意

5-1 コネクタ挿入時
PlugとReceptacleの中心軸を合わせ、
できる限り垂直に挿入して下さい。
挿入部の傾斜角が大きすぎると、コネクタの破損の原因となりますので、過度な傾斜角は行わないで下さい。

DESIGN'D BY		DATE
CHK'D BY		DATE
APP'D BY		DATE
REV. EGN	BY	DATE
REV. RECORD	CUSTOMER COPY	
SERIES No.	2814	
		
TITLE MF series wire coaxial connector plus vertical (ground contact : gold plating)		
SCALE UNIT		DWG. No.
-		20279
SHEET		REV.
4/4		19C