

DR.TRAINER

Thank you for purchasing the Dr.Trainer smart bark collar. We have made every attempt to provide you with the most technologically advanced product, using the most stringent quality and manufacturing standards. We are confident you will be pleased with the results you'll attain with your Dr.Trainer. Please remember, you will get better results with the use of lower static levels combined with consistent training techniques. The use of high levels of static should only be used as a last resort, or in life-threatening situations. Good luck with your training, and please feel free to contact us, should you have any questions.

971-302-6642 or Service@DrTrainer.com

Important Safety Information

Not for use with aggressive dogs. Do not use this product if your dog is aggressive, or if your dog is prone to aggressive behavior. Aggressive dogs can cause severe injury and even death to their owner and others. If you are unsure whether this product is appropriate for your dog, please consult your veterinarian or certified trainer.

Safety during on-leash training. It is vitally important that you and your dog remain safe while learning during on-leash training. Your dog should be on a strong leash, long enough for him to attempt to chase an object, but short enough for him not to reach a road or other unsafe area. You must also be physically strong enough to restrain your dog when he tries to chase something.

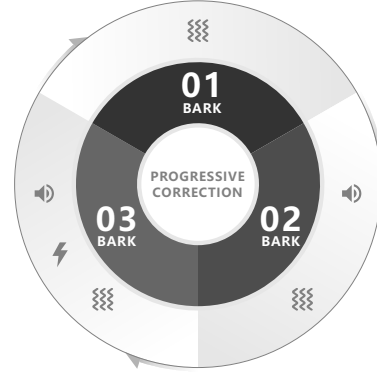
Risk of skin damage. Please read and follow the instructions in this manual. The proper fit of the collar is important. A collar worn for too long or fastened too tightly on your pet's neck may cause skin damage, ranging from redness to pressure ulcers. This condition is commonly known as bed sores.

- Avoid leaving the collar on the dog for more than 12 hours per day.
- When possible, reposition the collar on the pet's neck every 1 to 2 hours.
- Check the fit to prevent excessive pressure; follow the instructions in this manual.
- Never connect a lead to the electronic collar; it will cause excessive pressure on the contacts. When using a separate collar for a lead, don't put pressure on the electronic collar.
- Wash the dog's neck area and the contacts of the collar weekly with a damp cloth.
- Examine the contact area daily for signs of a rash or a sore.
- If a rash or sore is found, discontinue use of the collar until the skin has healed.
- If the condition persists beyond 48 hours, see your veterinarian.

How does the Dr.Trainer Smart Bark Collar work?

Now, you can experience the difference a Dr.Trainer can make. Spend less time training and more time enjoying your dog.

1. The Dr.Trainer smart bark collar has a progressive correction system. If your dog continues to bark, the correction system automatically increases to the next level until he stops. He will quickly realize that barking is not a good thing within the first few days of wearing the collar.



2. The Dr.Trainer smart bark collar can also customize the correction settings with the App. You can choose the combination of functions and intensity levels that suits your dog. When the dog is barking, the smart bark collar will use your correction setting to remind it not to.

Specifications and Performance

Product name: Smart Bark Collar

Mode: B1s & B1s Pro

Battery type: Li-Polymer

Battery capacity: 500mAh

Input interface: Micro-USB

Input parameters: 5V/1A Max.

Bluetooth: BLE4.0

Vibration: 3 Levels

Static: 99 Levels

Automatic protection: If the static function is triggered 10 times in 1 minute, the device will sleep 2 minutes for protection

Charging time: About 40 minutes (with 5V/1A charger)

Battery Life/Working time: About 2 weeks

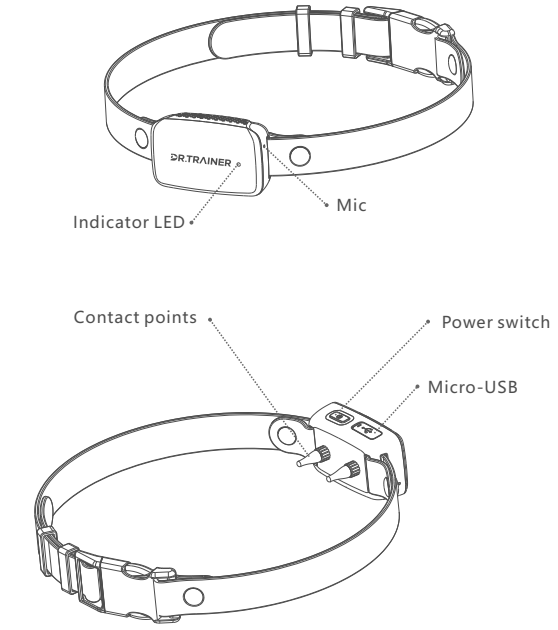
Material: PC+ABS

Ingress protection: IPX7

Packing list:

- 1 x Device
- 1 x Adjustable Nylon Collar
- 1 x USB Charging Cable
- 1 x Test Light
- 1 x User Manual
- 1 x Quick Start Guide
- 4x Contact Points

Diagram



Key Definitions

| Function | Action | Indication |
|------------------------|---|---|
| Power on | In shutdown state, press and hold the power switch for 1 second | Blue light stays on 3 seconds, with short vibration |
| Power off | In operating state, press and hold the power switch for 2 seconds | Lights off, with long vibration for 1 second. |
| Bluetooth pairing mode | Double-click the power button (within 1.5 seconds) | Alternately flashes blue and green lights for about 90 seconds |
| Factory reset | press the power button for more than 15s | The device vibrates when you keep pressing over 2 seconds, continue pressing for 15 consecutive seconds, then it will be recovered. |

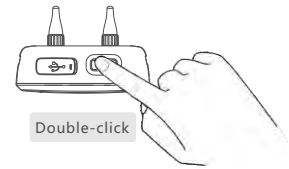
LED Indications

| | |
|-----------------|---|
| operating state | 1. When Bluetooth is not connected to mobile phone, the Green LED flashes. 2. When Bluetooth is connected to mobile phone, the Blue LED flashes. |
| Pairing state | Green and blue lights flash alternately |
| Charging | Green light slowly flashes |
| Fully charged | Green light keeps on |
| Low battery | Red light quickly flashes when battery capacity is less than 15% |

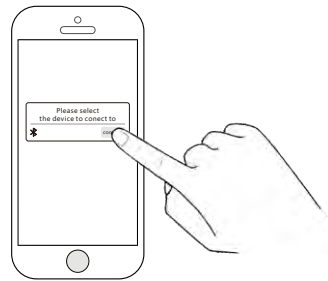
Operating Guide

STEP 1: Pair the Smart Bark Collar with your phone.

- Open Bluetooth and the APP on your phone, and follow the instructions.
- Please turn on the collar first, by pressing the power button for more than 1 second.
- Quickly double-click the power button of the device to enter pairing mode (blue and green lights flash alternately).



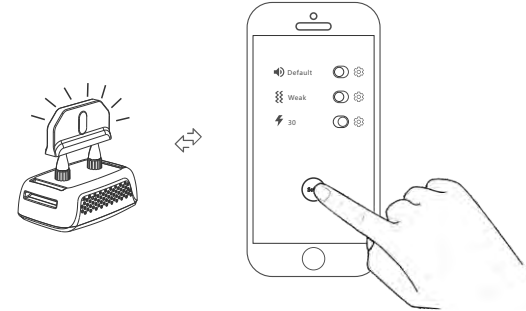
- After the device is detected by the App, please confirm the first connection manually.



STEP 2: Test the Static Function

To ensure that the Static Function works properly before using the collar on your dog, it is recommended that you test the Static Function at least once before using. Please follow instructions below for how to use the test light.

- Turn the Smart Bark Collar on.
- Place the Test Light above the Contact Points.
- Open the App, press Send button on the Remote.
- The Test Light will flash.
- Turn the Bark Collar off. Store the Test Light for future testing.



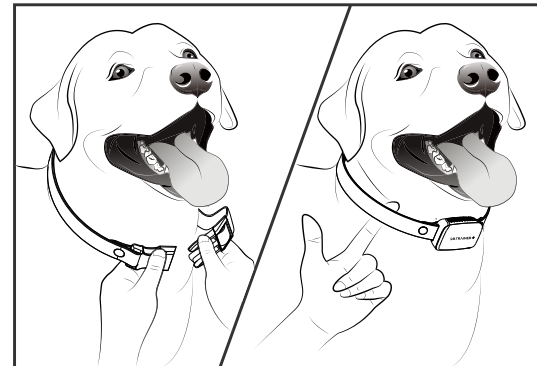
Note: If the Test Light does not flash, recharge the battery and re-test.

STEP 3: Fit the Smart Bark Collar

Important: The proper fit and placement of your Bark Collar is important for effective operation.

To ensure a proper fit, please follow these steps:

- Make sure that the Receiver Collar is turned off.
- Start with your dog standing comfortably.
- Place the Bark Collar on your dog's neck close to the ears. Center the Contact Points underneath your dog's neck.
- Check the tightness of the Bark Collar by inserting one finger between the collar and your dog's neck. The fit should be snug but not constricting.



Note: It is sometimes necessary to trim the hair around the Contact Points to make sure that the contact electrodes delivers effective static.

FAQ's

Q: Is the static safe for my pet?

While the static is unpleasant, it is harmless to your pet. Electronic training devices require interaction and training from the owner to achieve desired results.

Q: How old does a pet have to be before using the Dr.Trainer?

Your pet should be able to learn basic obedience commands such as "Sit" or "Stay". Pets should be at least 6 months old before using the Trainer.

Q: Is the Smart Bark Collar waterproof?

Yes. All of the Dr.Trainer Smart Bark Collars are waterproof.

Q: Can I use the Dr.Trainer on aggressive pets?

We do not recommend any of our products to be used on aggressive pets. We recommend that you contact your local veterinarian or professional trainer to determine if your pet might be aggressive.

Q: Why my pet is not responding when I press a button?

- Check to see if the Collar has been turned on.
- You can verify the Electronic Collar is delivering static to your pet by using the Test Light, enclosed in your kit, on the Receiver Collar. Please refer to the "Test the Static Function" section for details.
- Increase the correction level.
- Make sure the Bark Collar's Contact Points are placed snugly, in contact with your pet's skin.

Q: Why won't the Electronic Collar turn on?

Make sure the Electronic Collar has been charged.

Q: Why does your dog bark, but sometimes there is no trigger correction?

In order to remain humane in your treatment of your dog, the bark collar performs corrective actions only if the barking volume is beyond a certain level. You can also customize the limit value of Loudness with the following steps.

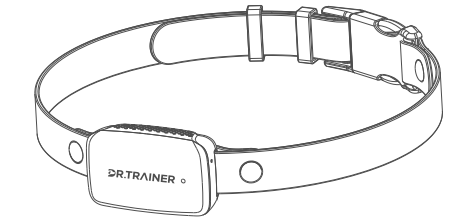
Setting — Trigger condition — Loudness

- If the barking has exceeded your acceptable range but no corrective action is triggered, you can turn down the Loudness limit value in Settings to increase the sensitivity.
- If you want to relax the restrictions, allowing your dog to bark at a higher loudness range, you can turn up the Loudness limit value to reduce the sensitivity.

IMPORTANT!

Please note that, the maximum static level can be detrimental to dogs that are sensitive to electric static, and different breeds of dog react differently to the same level of static stimulation. If you use the customized correction setting, it is highly recommended that you always start from the lowest intensity level, i.e. Level 1, and pay close attention to your dog's reaction when increasing the static level.

DR.TRAINER



B1s & B1s Pro

印刷颜色:单黑

This device complies with Part 15 of the FCC Rules. Operation is subject to the following two conditions: (1) this device may not cause harmful interference, and (2) this device must accept any interference received, including interference that may cause undesired operation.

Changes or modifications to this unit not expressly approved by the party responsible for compliance could void the user's authority to operate the equipment.

NOTE: This equipment has been tested and found to comply with the limits for a Class B digital device, pursuant to Part 15 of the FCC Rules. These limits are designed to provide reasonable protection against harmful interference in a residential installation. This equipment generates, uses and can radiate radio frequency energy and, if not installed and used in accordance with the instructions, may cause harmful interference to radio communications. However, there is no guarantee that interference will not occur in a particular installation. If this equipment does cause harmful interference to radio or television reception, which can be determined by turning the equipment off and on, the user is encouraged to try to correct the interference by one or more of the following measures:

- Reorient or relocate the receiving antenna.
- Increase the separation between the equipment and receiver.
- Connect the equipment into an outlet on a circuit different from that to which the receiver is connected.
- Consult the dealer or an experienced radio/TV technician for help.

This device and its antenna(s) must not be co-located or operation in conjunction with any other antenna or transmitter.

Radiation Exposure Statement

The device has been evaluated to meet general RF exposure requirement. in portable exposure condition without restriction.