

Report No.: SEWA2204000008RG02

Rev.: 01

Page: 1 of 52

Appendix B.31

NR Band n12



Unless otherwise agreed in writing, this document is issued by the Company subject to its General Conditions of Service printed overleaf, available on request or accessible at <http://www.sgs.com/en/Terms-and-Conditions.aspx> and, for electronic format documents, subject to Terms and Conditions for Electronic Documents at <http://www.sgs.com/en/Terms-and-Conditions/Terms-e-Documents.aspx>. Attention is drawn to the limitation of liability, indemnification and jurisdiction issues defined therein. Any holder of this document is advised that information contained hereon reflects the Company's findings at the time of its intervention only and within the limits of Client's instructions, if any. The Company's sole responsibility is to its Client and this document does not exonerate parties to a transaction from exercising all their rights and obligations under the transaction documents. This document cannot be reproduced except in full, without prior written approval of the Company. Any unauthorized alteration, forgery or falsification of the content or appearance of this document is unlawful and offenders may be prosecuted to the fullest extent of the law. Unless otherwise stated the results shown in this test report refer only to the sample(s) tested and such sample(s) are retained for 30 days only.
Attention: To check the authenticity of testing/inspection report & certificate, please contact us at telephone: (86-755) 8307 1443, or email: CN.Doccheck@sgs.com

SGS-CSTC Standards Technical Services (Suzhou) Co., Ltd.
(Wireless Laboratory)

South of No. 6 Plant, No. 1, Runsheng Road, Suzhou Industrial Park, Suzhou Area, China (Jiangsu) Pilot Free Trade Zone 215000
中国·苏州·中国(江苏)自由贸易试验区苏州片区苏州工业园区润胜路1号的6号厂房南楼 邮编: 215000

t (86-512) 62992980 www.sgs.com.cn
t (86-512) 62992980 sgs.china@sgs.com

Effective (Isotropic) Radiated Power Output Data for SA

Test Result

Band	SCS	Bandwidth	Modulation	Channel	RB Config	Power (dBm)	ERP (dBm)	Limit (dBm)	Verdict
N12	15	5	DFT-PI2BPSK	L	Inner_1RB_Left	23.46	21.11	34.77	PASS
N12	15	5	DFT-PI2BPSK	L	Inner_1RB_Right	23.34	20.99	34.77	PASS
N12	15	5	DFT-PI2BPSK	L	Outer_Full	23.39	21.04	34.77	PASS
N12	15	5	DFT-QPSK	L	Inner_1RB_Left	23.43	21.08	34.77	PASS
N12	15	5	DFT-QPSK	L	Inner_1RB_Right	23.32	20.97	34.77	PASS
N12	15	5	DFT-QPSK	L	Outer_Full	23.42	21.07	34.77	PASS
N12	15	5	DFT-16QAM	L	Inner_1RB_Left	23.41	21.06	34.77	PASS
N12	15	5	DFT-16QAM	L	Inner_1RB_Right	23.4	21.05	34.77	PASS
N12	15	5	DFT-16QAM	L	Outer_Full	22.4	20.05	34.77	PASS
N12	15	5	DFT-64QAM	L	Inner_1RB_Left	21.83	19.48	34.77	PASS
N12	15	5	DFT-64QAM	L	Inner_1RB_Right	21.91	19.56	34.77	PASS
N12	15	5	DFT-64QAM	L	Outer_Full	21.91	19.56	34.77	PASS
N12	15	5	DFT-256QAM	L	Inner_1RB_Left	19.9	17.55	34.77	PASS
N12	15	5	DFT-256QAM	L	Inner_1RB_Right	19.86	17.51	34.77	PASS
N12	15	5	DFT-256QAM	L	Outer_Full	19.87	17.52	34.77	PASS
N12	15	5	DFT-PI2BPSK	M	Inner_1RB_Left	23.41	21.06	34.77	PASS
N12	15	5	DFT-PI2BPSK	M	Inner_1RB_Right	23.56	21.21	34.77	PASS
N12	15	5	DFT-PI2BPSK	M	Outer_Full	23.48	21.13	34.77	PASS
N12	15	5	DFT-QPSK	M	Inner_1RB_Left	23.39	21.04	34.77	PASS
N12	15	5	DFT-QPSK	M	Inner_1RB_Right	23.55	21.2	34.77	PASS
N12	15	5	DFT-QPSK	M	Outer_Full	23.43	21.08	34.77	PASS
N12	15	5	DFT-16QAM	M	Inner_1RB_Left	23.41	21.06	34.77	PASS
N12	15	5	DFT-16QAM	M	Inner_1RB_Right	23.57	21.22	34.77	PASS
N12	15	5	DFT-16QAM	M	Outer_Full	22.46	20.11	34.77	PASS
N12	15	5	DFT-64QAM	M	Inner_1RB_Left	21.95	19.6	34.77	PASS
N12	15	5	DFT-64QAM	M	Inner_1RB_Right	21.92	19.57	34.77	PASS
N12	15	5	DFT-64QAM	M	Outer_Full	21.91	19.56	34.77	PASS
N12	15	5	DFT-256QAM	M	Inner_1RB_Left	19.95	17.6	34.77	PASS
N12	15	5	DFT-256QAM	M	Inner_1RB_Right	19.97	17.62	34.77	PASS
N12	15	5	DFT-256QAM	M	Outer_Full	19.9	17.55	34.77	PASS
N12	15	5	DFT-PI2BPSK	H	Inner_1RB_Left	23.53	21.18	34.77	PASS



Unless otherwise agreed in writing, this document is issued by the Company subject to its General Conditions of Service printed overleaf, available on request or accessible at <http://www.sgs.com/en/Terms-and-Conditions.aspx> and, for electronic format documents, subject to Terms and Conditions for Electronic Documents at <http://www.sgs.com/en/Terms-and-Conditions/Terms-e-Documents.aspx>. Attention is drawn to the limitation of liability, indemnification and jurisdiction issues defined therein. Any holder of this document is advised that information contained hereon reflects the Company's findings at the time of its intervention only and within the limits of Client's instructions, if any. The Company's sole responsibility is to its Client and this document does not exonerate parties to a transaction from exercising all their rights and obligations under the transaction documents. This document cannot be reproduced except in full, without prior written approval of the Company. Any unauthorized alteration, forgery or falsification of the content or appearance of this document is unlawful and offenders may be prosecuted to the fullest extent of the law. Unless otherwise stated the results shown in this test report refer only to the sample(s) tested and such sample(s) are retained for 30 days only.

Attention: To check the authenticity of testing/inspection report & certificate, please contact us at telephone: (86-755) 8307 1443, or email: CN.Doccheck@sgs.com

South of No. 6 Plant, No. 1, Pansheng Road, Suzhou Industrial Park, Suzhou Area, China (Jiangsu) Pilot Free Trade Zone 215000 t (86-512) 62992980 www.sgs.com.cn
 中国·苏州·中国(江苏)自由贸易试验区苏州片区苏州工业园区海胜路1号的6号厂房南座 邮编: 215000 t (86-512) 62992980 sgs.china@sgs.com



N12	15	5	DFT-PI2BPSK	H	Inner_1RB_Right	23.56	21.21	34.77	PASS
N12	15	5	DFT-PI2BPSK	H	Outer_Full	23.54	21.19	34.77	PASS
N12	15	5	DFT-QPSK	H	Inner_1RB_Left	23.47	21.12	34.77	PASS
N12	15	5	DFT-QPSK	H	Inner_1RB_Right	23.5	21.15	34.77	PASS
N12	15	5	DFT-QPSK	H	Outer_Full	23.56	21.21	34.77	PASS
N12	15	5	DFT-16QAM	H	Inner_1RB_Left	23.51	21.16	34.77	PASS
N12	15	5	DFT-16QAM	H	Inner_1RB_Right	23.65	21.3	34.77	PASS
N12	15	5	DFT-16QAM	H	Outer_Full	22.57	20.22	34.77	PASS
N12	15	5	DFT-64QAM	H	Inner_1RB_Left	21.97	19.62	34.77	PASS
N12	15	5	DFT-64QAM	H	Inner_1RB_Right	22.03	19.68	34.77	PASS
N12	15	5	DFT-64QAM	H	Outer_Full	22.02	19.67	34.77	PASS
N12	15	5	DFT-256QAM	H	Inner_1RB_Left	19.73	17.38	34.77	PASS
N12	15	5	DFT-256QAM	H	Inner_1RB_Right	19.74	17.39	34.77	PASS
N12	15	5	DFT-256QAM	H	Outer_Full	19.92	17.57	34.77	PASS
N12	15	10	DFT-PI2BPSK	L	Inner_1RB_Left	23.37	21.02	34.77	PASS
N12	15	10	DFT-PI2BPSK	L	Inner_1RB_Right	23.39	21.04	34.77	PASS
N12	15	10	DFT-PI2BPSK	L	Outer_Full	23.41	21.06	34.77	PASS
N12	15	10	DFT-QPSK	L	Inner_1RB_Left	23.35	21	34.77	PASS
N12	15	10	DFT-QPSK	L	Inner_1RB_Right	23.35	21	34.77	PASS
N12	15	10	DFT-QPSK	L	Outer_Full	23.36	21.01	34.77	PASS
N12	15	10	DFT-16QAM	L	Inner_1RB_Left	23.81	21.46	34.77	PASS
N12	15	10	DFT-16QAM	L	Inner_1RB_Right	23.7	21.35	34.77	PASS
N12	15	10	DFT-16QAM	L	Outer_Full	22.34	19.99	34.77	PASS
N12	15	10	DFT-64QAM	L	Inner_1RB_Left	21.74	19.39	34.77	PASS
N12	15	10	DFT-64QAM	L	Inner_1RB_Right	21.68	19.33	34.77	PASS
N12	15	10	DFT-64QAM	L	Outer_Full	21.83	19.48	34.77	PASS
N12	15	10	DFT-256QAM	L	Inner_1RB_Left	19.56	17.21	34.77	PASS
N12	15	10	DFT-256QAM	L	Inner_1RB_Right	19.66	17.31	34.77	PASS
N12	15	10	DFT-256QAM	L	Outer_Full	19.86	17.51	34.77	PASS
N12	15	10	DFT-PI2BPSK	M	Inner_1RB_Left	23.34	20.99	34.77	PASS
N12	15	10	DFT-PI2BPSK	M	Inner_1RB_Right	23.5	21.15	34.77	PASS
N12	15	10	DFT-PI2BPSK	M	Outer_Full	23.45	21.1	34.77	PASS
N12	15	10	DFT-QPSK	M	Inner_1RB_Left	23.36	21.01	34.77	PASS
N12	15	10	DFT-QPSK	M	Inner_1RB_Right	23.45	21.1	34.77	PASS
N12	15	10	DFT-QPSK	M	Outer_Full	23.41	21.06	34.77	PASS
N12	15	10	DFT-16QAM	M	Inner_1RB_Left	23.79	21.44	34.77	PASS
N12	15	10	DFT-16QAM	M	Inner_1RB_Right	23.86	21.51	34.77	PASS
N12	15	10	DFT-16QAM	M	Outer_Full	22.35	20	34.77	PASS



Unless otherwise agreed in writing, this document is issued by the Company subject to its General Conditions of Service printed overleaf, available on request or accessible at <http://www.sgs.com/en/Terms-and-Conditions.aspx> and, for electronic format documents, subject to Terms and Conditions for Electronic Documents at <http://www.sgs.com/en/Terms-and-Conditions/Terms-e-Documents.aspx>. Attention is drawn to the limitation of liability, indemnification and jurisdiction issues defined therein. Any holder of this document is advised that information contained hereon reflects the Company's findings at the time of its intervention only and within the limits of Client's instructions, if any. The Company's sole responsibility is to its Client and this document does not exonerate parties to a transaction from exercising all their rights and obligations under the transaction documents. This document cannot be reproduced except in full, without prior written approval of the Company. Any unauthorized alteration, forgery or falsification of the content or appearance of this document is unlawful and offenders may be prosecuted to the fullest extent of the law. Unless otherwise stated the results shown in this test report refer only to the sample(s) tested and such sample(s) are retained for 30 days only.

Attention: To check the authenticity of testing/inspection report & certificate, please contact us at telephone: (86-755) 8307 1443, or email: CN.Doccheck@sgs.com

South of No. 6 Plant, No. 1, Pansheng Road, Suzhou Industrial Park, Suzhou Area, China (Jiangsu) Pilot Free Trade Zone 215000 t (86-512) 62992980 www.sgs.com.cn
 中国·苏州·中国(江苏)自由贸易试验区苏州片区苏州工业园区海胜路1号的6号厂房南楼 邮编: 215000 t (86-512) 62992980 sgs.china@sgs.com



Report No.: SEWA2204000008RG02

Rev.: 01

Page: 4 of 52

N12	15	10	DFT-64QAM	M	Inner_1RB_Left	21.68	19.33	34.77	PASS
N12	15	10	DFT-64QAM	M	Inner_1RB_Right	21.83	19.48	34.77	PASS
N12	15	10	DFT-64QAM	M	Outer_Full	21.92	19.57	34.77	PASS
N12	15	10	DFT-256QAM	M	Inner_1RB_Left	19.54	17.19	34.77	PASS
N12	15	10	DFT-256QAM	M	Inner_1RB_Right	19.77	17.42	34.77	PASS
N12	15	10	DFT-256QAM	M	Outer_Full	19.92	17.57	34.77	PASS
N12	15	10	DFT-PI2BPSK	H	Inner_1RB_Left	23.44	21.09	34.77	PASS
N12	15	10	DFT-PI2BPSK	H	Inner_1RB_Right	23.6	21.25	34.77	PASS
N12	15	10	DFT-PI2BPSK	H	Outer_Full	23.57	21.22	34.77	PASS
N12	15	10	DFT-QPSK	H	Inner_1RB_Left	23.37	21.02	34.77	PASS
N12	15	10	DFT-QPSK	H	Inner_1RB_Right	23.48	21.13	34.77	PASS
N12	15	10	DFT-QPSK	H	Outer_Full	23.51	21.16	34.77	PASS
N12	15	10	DFT-16QAM	H	Inner_1RB_Left	23.76	21.41	34.77	PASS
N12	15	10	DFT-16QAM	H	Inner_1RB_Right	23.9	21.55	34.77	PASS
N12	15	10	DFT-16QAM	H	Outer_Full	22.45	20.1	34.77	PASS
N12	15	10	DFT-64QAM	H	Inner_1RB_Left	21.71	19.36	34.77	PASS
N12	15	10	DFT-64QAM	H	Inner_1RB_Right	21.84	19.49	34.77	PASS
N12	15	10	DFT-64QAM	H	Outer_Full	22.03	19.68	34.77	PASS
N12	15	10	DFT-256QAM	H	Inner_1RB_Left	19.56	17.21	34.77	PASS
N12	15	10	DFT-256QAM	H	Inner_1RB_Right	19.78	17.43	34.77	PASS
N12	15	10	DFT-256QAM	H	Outer_Full	19.94	17.59	34.77	PASS
N12	15	15	DFT-PI2BPSK	L	Inner_1RB_Left	23.49	21.14	34.77	PASS
N12	15	15	DFT-PI2BPSK	L	Inner_1RB_Right	23.6	21.25	34.77	PASS
N12	15	15	DFT-PI2BPSK	L	Outer_Full	23.58	21.23	34.77	PASS
N12	15	15	DFT-QPSK	L	Inner_1RB_Left	23.5	21.15	34.77	PASS
N12	15	15	DFT-QPSK	L	Inner_1RB_Right	23.56	21.21	34.77	PASS
N12	15	15	DFT-QPSK	L	Outer_Full	23.61	21.26	34.77	PASS
N12	15	15	DFT-16QAM	L	Inner_1RB_Left	23.41	21.06	34.77	PASS
N12	15	15	DFT-16QAM	L	Inner_1RB_Right	23.41	21.06	34.77	PASS
N12	15	15	DFT-16QAM	L	Outer_Full	22.6	20.25	34.77	PASS
N12	15	15	DFT-64QAM	L	Inner_1RB_Left	21.86	19.51	34.77	PASS
N12	15	15	DFT-64QAM	L	Inner_1RB_Right	21.85	19.5	34.77	PASS
N12	15	15	DFT-64QAM	L	Outer_Full	22.12	19.77	34.77	PASS
N12	15	15	DFT-256QAM	L	Inner_1RB_Left	19.84	17.49	34.77	PASS
N12	15	15	DFT-256QAM	L	Inner_1RB_Right	19.88	17.53	34.77	PASS
N12	15	15	DFT-256QAM	L	Outer_Full	20.06	17.71	34.77	PASS
N12	15	15	DFT-PI2BPSK	M	Inner_1RB_Left	23.47	21.12	34.77	PASS
N12	15	15	DFT-PI2BPSK	M	Inner_1RB_Right	23.59	21.24	34.77	PASS



Unless otherwise agreed in writing, this document is issued by the Company subject to its General Conditions of Service printed overleaf, available on request or accessible at <http://www.sgs.com/en/Terms-and-Conditions.aspx> and, for electronic format documents, subject to Terms and Conditions for Electronic Documents at <http://www.sgs.com/en/Terms-and-Conditions/Terms-e-Documents.aspx>. Attention is drawn to the limitation of liability, indemnification and jurisdiction issues defined therein. Any holder of this document is advised that information contained hereon reflects the Company's findings at the time of its intervention only and within the limits of Client's instructions, if any. The Company's sole responsibility is to its Client and this document does not exonerate parties to a transaction from exercising all their rights and obligations under the transaction documents. This document cannot be reproduced except in full, without prior written approval of the Company. Any unauthorized alteration, forgery or falsification of the content or appearance of this document is unlawful and offenders may be prosecuted to the fullest extent of the law. Unless otherwise stated the results shown in this test report refer only to the sample(s) tested and such sample(s) are retained for 30 days only.

Attention: To check the authenticity of testing/inspection report & certificate, please contact us at telephone: (86-755) 8307 1443, or email: CN.Doccheck@sgs.com

South of No. 6 Plant, No. 1, Pansheng Road, Suzhou Industrial Park, Suzhou Area, China (Jiangsu) Pilot Free Trade Zone 215000 t (86-512) 62992980 www.sgs.com.cn
 中国·苏州·中国(江苏)自由贸易试验区苏州片区苏州工业园区海澄路1号的6号厂房南楼 邮编: 215000 t (86-512) 62992980 sgs.china@sgs.com



Report No.: SEWA2204000008RG02

Rev.: 01

Page: 5 of 52

N12	15	15	DFT-PI2BPSK	M	Outer_Full	23.71	21.36	34.77	PASS
N12	15	15	DFT-QPSK	M	Inner_1RB_Left	23.49	21.14	34.77	PASS
N12	15	15	DFT-QPSK	M	Inner_1RB_Right	23.59	21.24	34.77	PASS
N12	15	15	DFT-QPSK	M	Outer_Full	23.67	21.32	34.77	PASS
N12	15	15	DFT-16QAM	M	Inner_1RB_Left	23.95	21.6	34.77	PASS
N12	15	15	DFT-16QAM	M	Inner_1RB_Right	23.99	21.64	34.77	PASS
N12	15	15	DFT-16QAM	M	Outer_Full	22.68	20.33	34.77	PASS
N12	15	15	DFT-64QAM	M	Inner_1RB_Left	21.8	19.45	34.77	PASS
N12	15	15	DFT-64QAM	M	Inner_1RB_Right	21.89	19.54	34.77	PASS
N12	15	15	DFT-64QAM	M	Outer_Full	22.23	19.88	34.77	PASS
N12	15	15	DFT-256QAM	M	Inner_1RB_Left	19.8	17.45	34.77	PASS
N12	15	15	DFT-256QAM	M	Inner_1RB_Right	19.89	17.54	34.77	PASS
N12	15	15	DFT-256QAM	M	Outer_Full	20.13	17.78	34.77	PASS
N12	15	15	DFT-PI2BPSK	H	Inner_1RB_Left	23.45	21.1	34.77	PASS
N12	15	15	DFT-PI2BPSK	H	Inner_1RB_Right	23.61	21.26	34.77	PASS
N12	15	15	DFT-PI2BPSK	H	Outer_Full	23.72	21.37	34.77	PASS
N12	15	15	DFT-QPSK	H	Inner_1RB_Left	23.42	21.07	34.77	PASS
N12	15	15	DFT-QPSK	H	Inner_1RB_Right	23.58	21.23	34.77	PASS
N12	15	15	DFT-QPSK	H	Outer_Full	23.69	21.34	34.77	PASS
N12	15	15	DFT-16QAM	H	Inner_1RB_Left	23.37	21.02	34.77	PASS
N12	15	15	DFT-16QAM	H	Inner_1RB_Right	23.42	21.07	34.77	PASS
N12	15	15	DFT-16QAM	H	Outer_Full	22.66	20.31	34.77	PASS
N12	15	15	DFT-64QAM	H	Inner_1RB_Left	21.79	19.44	34.77	PASS
N12	15	15	DFT-64QAM	H	Inner_1RB_Right	21.9	19.55	34.77	PASS
N12	15	15	DFT-64QAM	H	Outer_Full	22.2	19.85	34.77	PASS
N12	15	15	DFT-256QAM	H	Inner_1RB_Left	19.76	17.41	34.77	PASS
N12	15	15	DFT-256QAM	H	Inner_1RB_Right	19.89	17.54	34.77	PASS
N12	15	15	DFT-256QAM	H	Outer_Full	20.13	17.78	34.77	PASS



Unless otherwise agreed in writing, this document is issued by the Company subject to its General Conditions of Service printed overleaf, available on request or accessible at <http://www.sgs.com/en/Terms-and-Conditions.aspx> and, for electronic format documents, subject to Terms and Conditions for Electronic Documents at <http://www.sgs.com/en/Terms-and-Conditions/Terms-e-Documents.aspx>. Attention is drawn to the limitation of liability, indemnification and jurisdiction issues defined therein. Any holder of this document is advised that information contained hereon reflects the Company's findings at the time of its intervention only and within the limits of Client's instructions, if any. The Company's sole responsibility is to its Client and this document does not exonerate parties to a transaction from exercising all their rights and obligations under the transaction documents. This document cannot be reproduced except in full, without prior written approval of the Company. Any unauthorized alteration, forgery or falsification of the content or appearance of this document is unlawful and offenders may be prosecuted to the fullest extent of the law. Unless otherwise stated the results shown in this test report refer only to the sample(s) tested and such sample(s) are retained for 30 days only.

Attention: To check the authenticity of testing/inspection report & certificate, please contact us at telephone: (86-755) 8307 1443, or email: CN.Doccheck@sgs.com

South of No. 6 Plant, No. 1, Pansheng Road, Suzhou Industrial Park, Suzhou Area, China (Jiangsu) Pilot Free Trade Zone 215000
 中国·苏州·中国(江苏)自由贸易试验区苏州片区苏州工业园区海胜路1号的6号厂房南楼 邮编: 215000

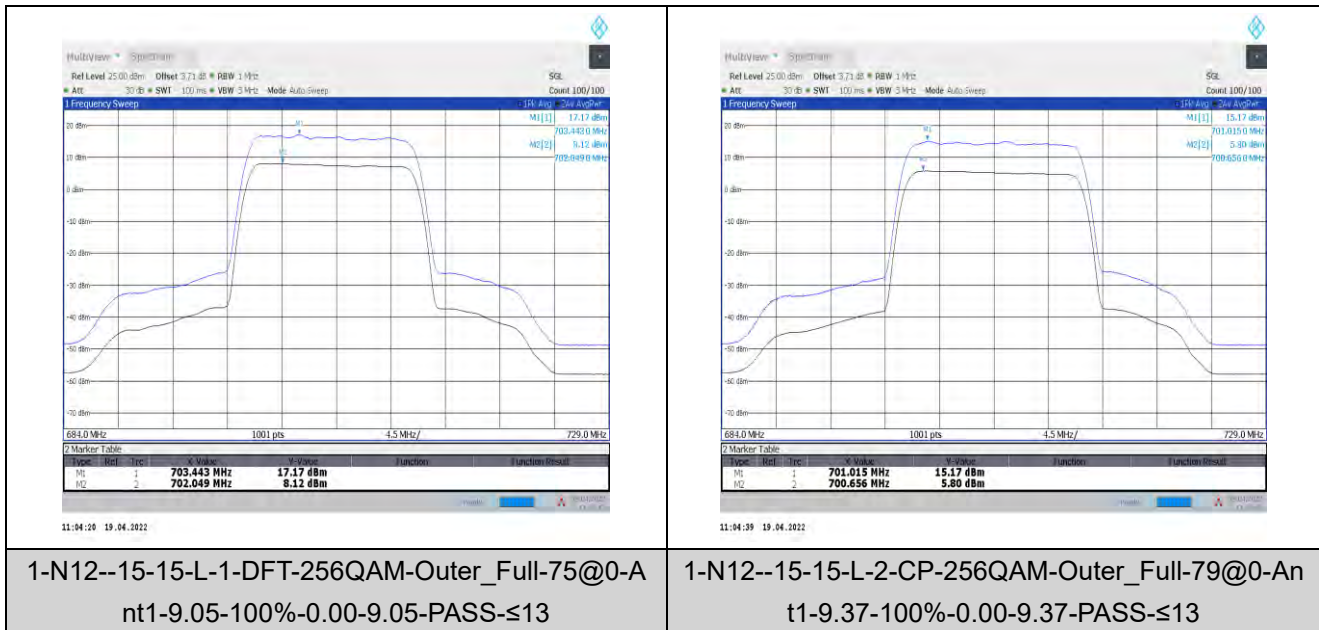
t (86-512) 62992980 www.sgs.com.cn
 t (86-512) 62992980 sgs.china@sgs.com

Peak-to-Average Ratio for SA

Test Result

Band	SCS	Bandwidth	Modulation	Channel	RB Config	Duty Cycle	Factor	Result	Limit	Verdict
N12	15	15	DFT-256QAM	L	Outer_Full	100%	0.00	9.05	≤13	PASS
N12	15	15	CP-256QAM	L	Outer_Full	100%	0.00	9.37	≤13	PASS
N12	15	15	DFT-256QAM	M	Outer_Full	100%	0.00	8.97	≤13	PASS
N12	15	15	CP-256QAM	M	Outer_Full	100%	0.00	9.42	≤13	PASS
N12	15	15	DFT-256QAM	H	Outer_Full	100%	0.00	8.89	≤13	PASS
N12	15	15	CP-256QAM	H	Outer_Full	100%	0.00	9.45	≤13	PASS

Test Graphs

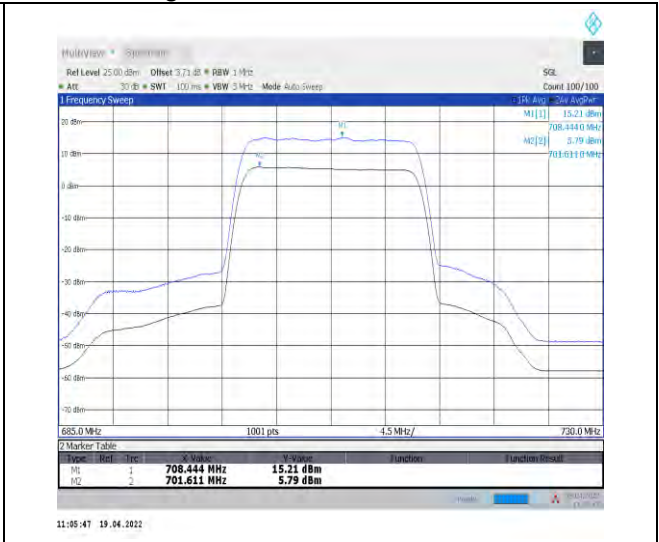
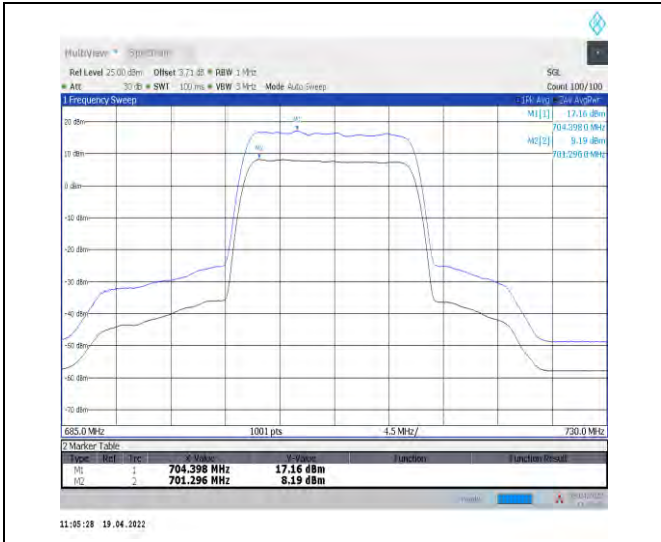


Unless otherwise agreed in writing, this document is issued by the Company subject to its General Conditions of Service printed overleaf, available on request or accessible at <http://www.sgs.com/en/Terms-and-Conditions.aspx> and, for electronic format documents, subject to Terms and Conditions for Electronic Documents at <http://www.sgs.com/en/Terms-and-Conditions/Terms-e-Documents.aspx>. Attention is drawn to the limitation of liability, indemnification and jurisdiction issues defined therein. Any holder of this document is advised that information contained hereon reflects the Company's findings at the time of its intervention only and within the limits of Client's instructions, if any. The Company's sole responsibility is to its Client and this document does not exonerate parties to a transaction from exercising all their rights and obligations under the transaction documents. This document cannot be reproduced except in full, without prior written approval of the Company. Any unauthorized alteration, forgery or falsification of the content or appearance of this document is unlawful and offenders may be prosecuted to the fullest extent of the law. Unless otherwise stated the results shown in this test report refer only to the sample(s) tested and such sample(s) are retained for 30 days only.

Attention: To check the authenticity of testing/inspection report & certificate, please contact us at telephone: (86-755) 8307 1443, or email: CN.Doccheck@sgs.com

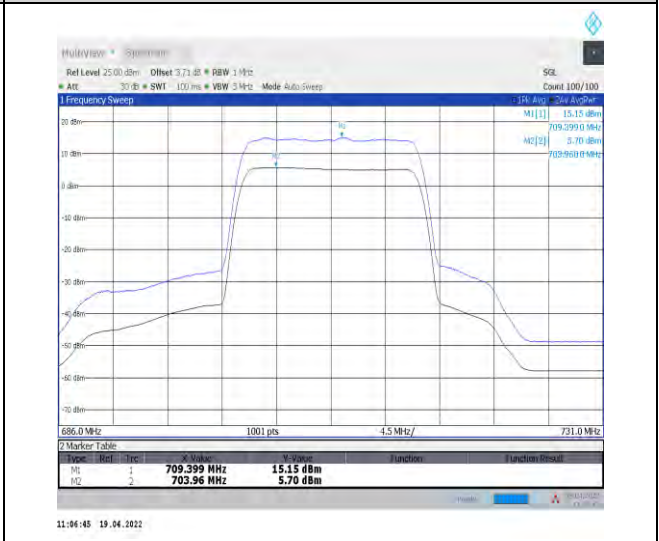
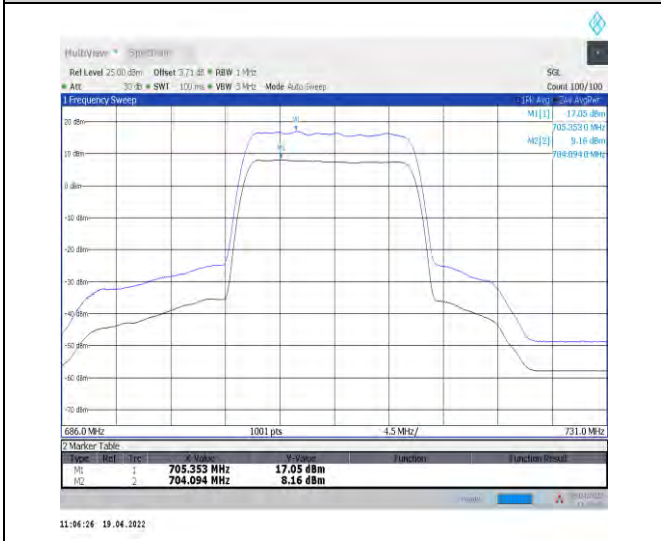
South of No. 6 Plant, No. 1, Pansheng Road, Suzhou Industrial Park, Suzhou Area, China (Jiangsu) Pilot Free Trade Zone 215000
中国·苏州·中国(江苏)自由贸易试验区苏州片区苏州工业园区海胜路1号的6号厂房南楼 邮编: 215000

t (86-512) 62992980 www.sgsgroup.com.cn
t (86-512) 62992980 sgs.china@sgs.com



1-N12--15-15-M-1-DFT-256QAM-Outer_Full-75@0-A
nt1-8.97-100%-0.00-8.97-PASS-≤13

1-N12--15-15-M-2-CP-256QAM-Outer_Full-79@0-A
nt1-9.42-100%-0.00-9.42-PASS-≤13



1-N12--15-15-H-1-DFT-256QAM-Outer_Full-75@0-A
nt1-8.89-100%-0.00-8.89-PASS-≤13

1-N12--15-15-H-2-CP-256QAM-Outer_Full-79@0-A
nt1-9.45-100%-0.00-9.45-PASS-≤13



Unless otherwise agreed in writing, this document is issued by the Company subject to its General Conditions of Service printed overleaf, available on request or accessible at <http://www.sgs.com/en/Terms-and-Conditions.aspx> and, for electronic format documents, subject to Terms and Conditions for Electronic Documents at <http://www.sgs.com/en/Terms-and-Conditions/Terms-e-Documents.aspx>. Attention is drawn to the limitation of liability, indemnification and jurisdiction issues defined therein. Any holder of this document is advised that information contained hereon reflects the Company's findings at the time of its intervention only and within the limits of Client's instructions, if any. The Company's sole responsibility is to its Client and this document does not exonerate parties to a transaction from exercising all their rights and obligations under the transaction documents. This document cannot be reproduced except in full, without prior written approval of the Company. Any unauthorized alteration, forgery or falsification of the content or appearance of this document is unlawful and offenders may be prosecuted to the fullest extent of the law. Unless otherwise stated the results shown in this test report refer only to the sample(s) tested and such sample(s) are retained for 30 days only.
Attention: To check the authenticity of testing/inspection report & certificate, please contact us at telephone: (86-755) 8307 1443, or email: CN.Doccheck@sgs.com

South of No. 6 Plant, No. 1, Runsheng Road, Suzhou Industrial Park, Suzhou Area, China (Jiangsu) Pilot Free Trade Zone 215000
中国·苏州·中国(江苏)自由贸易试验区苏州片区苏州工业园区润胜路1号的6号厂房南楼 邮编: 215000

t (86-512) 62992980 www.sgs.com.cn
t (86-512) 62992980 sgs.china@sgs.com

Modulation characteristics for SA

Test Result

Band	SCS	Bandwidth	Modulation	Channel	RB Config	Result	Verdict
N12	15	15	DFT-PI2BPSK	M	Outer_Full	see graph	PASS
N12	15	15	DFT-QPSK	M	Outer_Full	see graph	PASS
N12	15	15	DFT-16QAM	M	Outer_Full	see graph	PASS
N12	15	15	DFT-64QAM	M	Outer_Full	see graph	PASS
N12	15	15	DFT-256QAM	M	Outer_Full	see graph	PASS
N12	15	15	CP-QPSK	M	Outer_Full	see graph	PASS
N12	15	15	CP-16QAM	M	Outer_Full	see graph	PASS
N12	15	15	CP-64QAM	M	Outer_Full	see graph	PASS
N12	15	15	CP-256QAM	M	Outer_Full	see graph	PASS



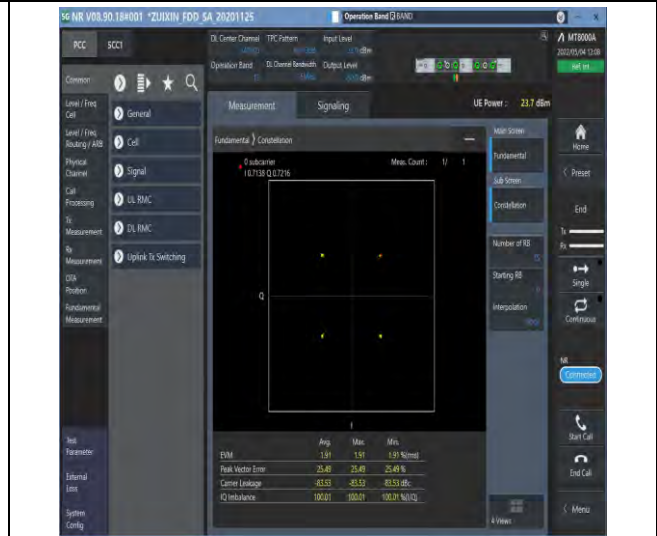
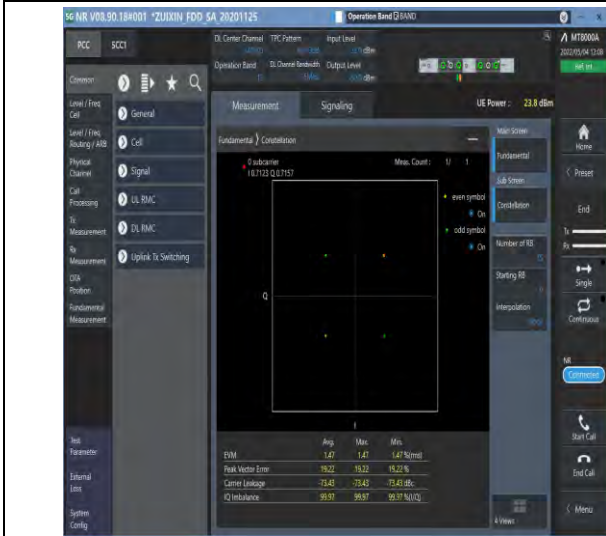
Unless otherwise agreed in writing, this document is issued by the Company subject to its General Conditions of Service printed overleaf, available on request or accessible at <http://www.sgs.com/en/Terms-and-Conditions.aspx> and, for electronic format documents, subject to Terms and Conditions for Electronic Documents at <http://www.sgs.com/en/Terms-and-Conditions/Terms-e-Documents.aspx>. Attention is drawn to the limitation of liability, indemnification and jurisdiction issues defined therein. Any holder of this document is advised that information contained hereon reflects the Company's findings at the time of its intervention only and within the limits of Client's instructions, if any. The Company's sole responsibility is to its Client and this document does not exonerate parties to a transaction from exercising all their rights and obligations under the transaction documents. This document cannot be reproduced except in full, without prior written approval of the Company. Any unauthorized alteration, forgery or falsification of the content or appearance of this document is unlawful and offenders may be prosecuted to the fullest extent of the law. Unless otherwise stated the results shown in this test report refer only to the sample(s) tested and such sample(s) are retained for 30 days only.

Attention: To check the authenticity of testing/inspection report & certificate, please contact us at telephone: (86-755) 8307 1443, or email: CN.Doccheck@sgs.com

South of No. 6 Plant, No. 1, Runsheng Road, Suzhou Industrial Park, Suzhou Area, China (Jiangsu) Pilot Free Trade Zone 215000
 中国·苏州·中国(江苏)自由贸易试验区苏州片区苏州工业园区润胜路1号的6号厂房南楼 邮编: 215000

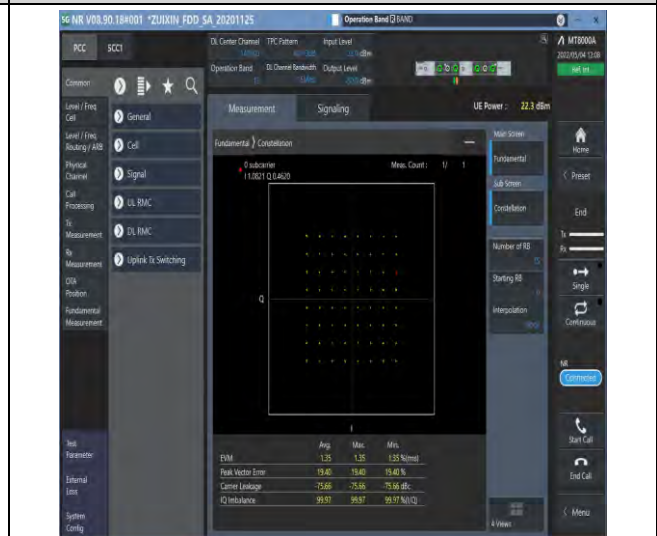
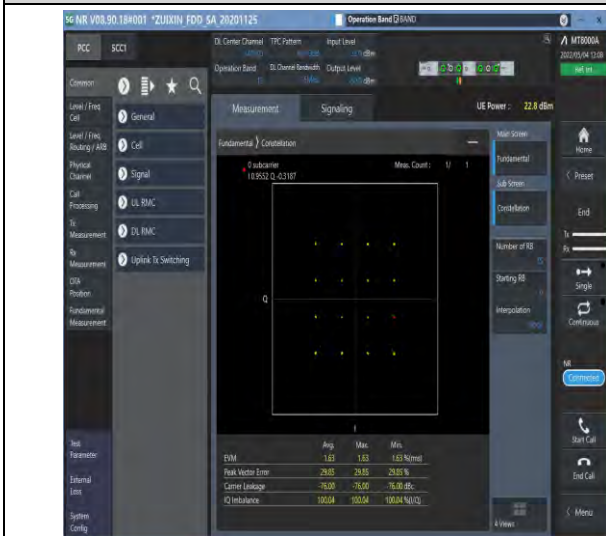
t (86-512) 62992980 www.sgs.com.cn
 t (86-512) 62992980 sgs.china@sgs.com

Test Graphs



1-N12-PC3-15-15-M-1-DFT-PI2BPSK-Outer_Full-75
 @0-Ant1-see graph-PASS

1-N12-PC3-15-15-M-2-DFT-QPSK-Outer_Full-75@
 0-Ant1-see graph-PASS



1-N12-PC3-15-15-M-3-DFT-16QAM-Outer_Full-75@
 0-Ant1-see graph-PASS

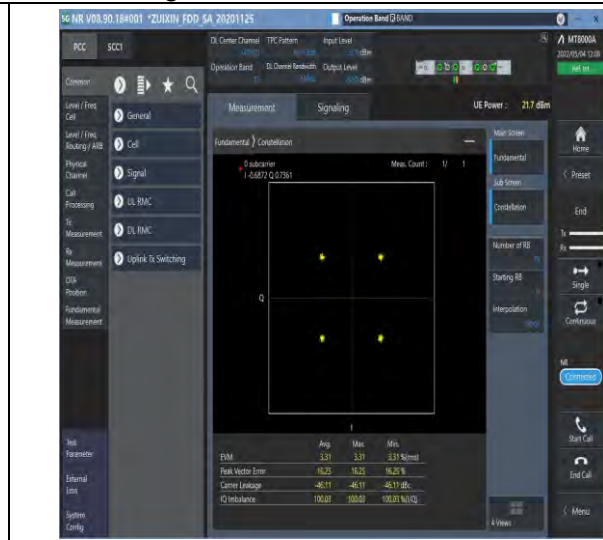
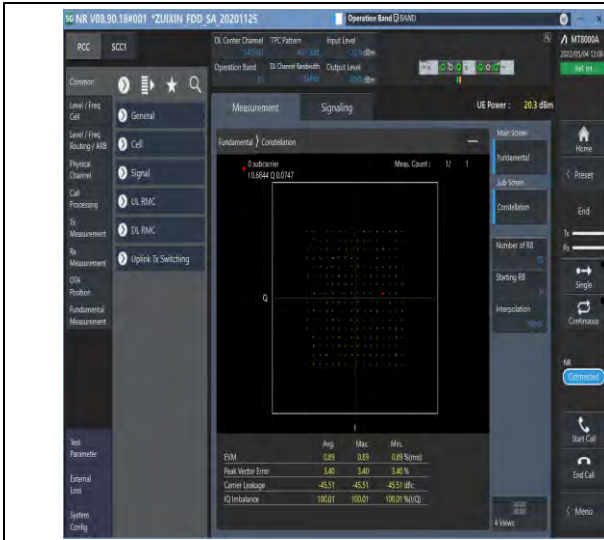
1-N12-PC3-15-15-M-4-DFT-64QAM-Outer_Full-75
 @0-Ant1-see graph-PASS



Unless otherwise agreed in writing, this document is issued by the Company subject to its General Conditions of Service printed overleaf, available on request or accessible at <http://www.sgs.com/en/Terms-and-Conditions.aspx> and, for electronic format documents, subject to Terms and Conditions for Electronic Documents at <http://www.sgs.com/en/Terms-and-Conditions/Terms-e-Documents.aspx>. Attention is drawn to the limitation of liability, indemnification and jurisdiction issues defined therein. Any holder of this document is advised that information contained hereon reflects the Company's findings at the time of its intervention only and within the limits of Client's instructions, if any. The Company's sole responsibility is to its Client and this document does not exonerate parties to a transaction from exercising all their rights and obligations under the transaction documents. This document cannot be reproduced except in full, without prior written approval of the Company. Any unauthorized alteration, forgery or falsification of the content or appearance of this document is unlawful and offenders may be prosecuted to the fullest extent of the law. Unless otherwise stated the results shown in this test report refer only to the sample(s) tested and such sample(s) are retained for 30 days only.
Attention: To check the authenticity of testing/inspection report & certificate, please contact us at telephone: (86-755) 8307 1443, or email: CN.Doccheck@sgs.com

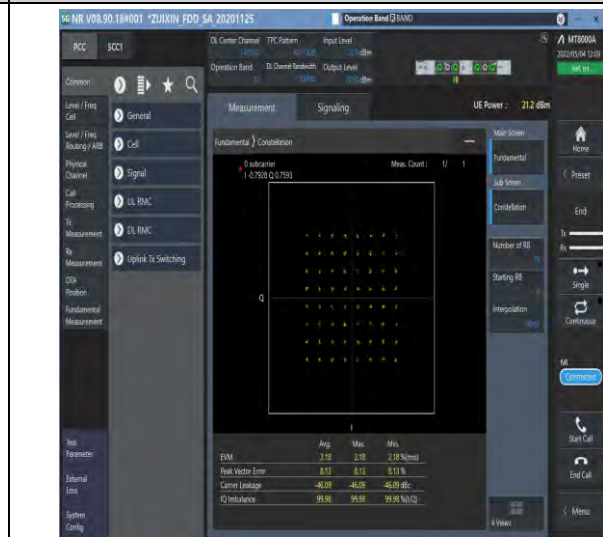
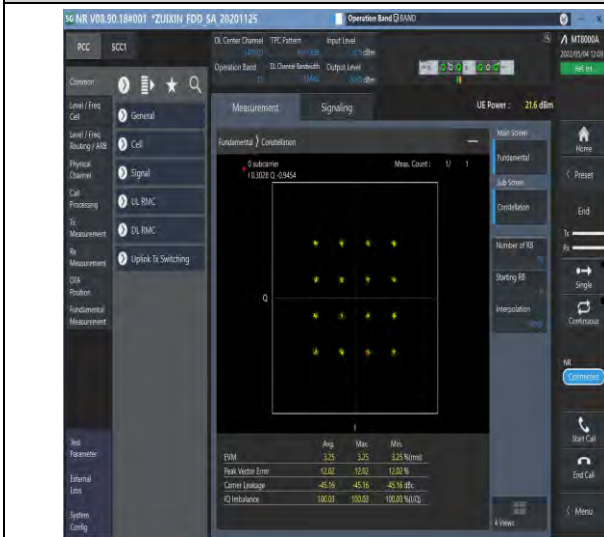
South of No. 6 Plant, No. 1, Runsheng Road, Suzhou Industrial Park, Suzhou Area, China (Jiangsu) Pilot Free Trade Zone 215000
 中国·苏州·中国(江苏)自由贸易试验区苏州片区苏州工业园区润胜路1号的6号厂房南部 邮编: 215000

t (86-512) 62992980 www.sgs.com.cn
 t (86-512) 62992980 sgs.china@sgs.com



1-N12-PC3-15-15-M-5-DFT-256QAM-Outer_Full-75 @0-Ant1-see graph-PASS

1-N12-PC3-15-15-M-6-CP-QPSK-Outer_Full-79@0-Ant1-see graph-PASS



1-N12-PC3-15-15-M-7-CP-16QAM-Outer_Full-79@0-Ant1-see graph-PASS

1-N12-PC3-15-15-M-8-CP-64QAM-Outer_Full-79@0-Ant1-see graph-PASS

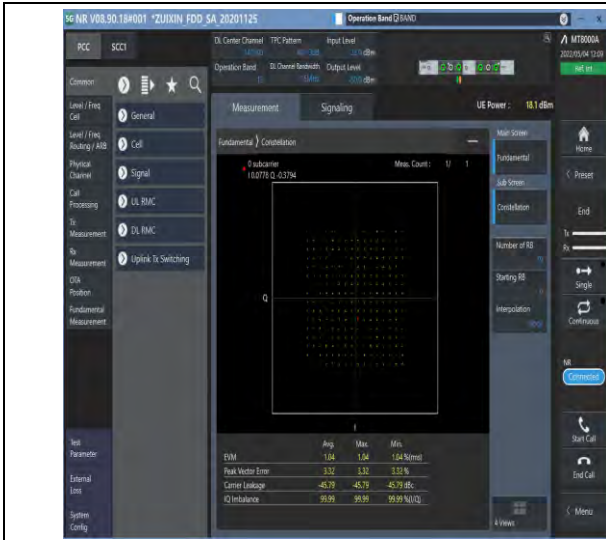


Unless otherwise agreed in writing, this document is issued by the Company subject to its General Conditions of Service printed overleaf, available on request or accessible at <http://www.sgs.com/en/Terms-and-Conditions.aspx> and, for electronic format documents, subject to Terms and Conditions for Electronic Documents at <http://www.sgs.com/en/Terms-and-Conditions/Terms-e-Documents.aspx>. Attention is drawn to the limitation of liability, indemnification and jurisdiction issues defined therein. Any holder of this document is advised that information contained hereon reflects the Company's findings at the time of its intervention only and within the limits of Client's instructions, if any. The Company's sole responsibility is to its Client and this document does not exonerate parties to a transaction from exercising all their rights and obligations under the transaction documents. This document cannot be reproduced except in full, without prior written approval of the Company. Any unauthorized alteration, forgery or falsification of the content or appearance of this document is unlawful and offenders may be prosecuted to the fullest extent of the law. Unless otherwise stated the results shown in this test report refer only to the sample(s) tested and such sample(s) are retained for 30 days only.

Attention: To check the authenticity of testing/inspection report & certificate, please contact us at telephone: (86-755) 8307 1443, or email: CN.Doccheck@sgs.com

South of No. 6 Plant, No. 1, Pansheng Road, Suzhou Industrial Park, Suzhou Area, China (Jiangsu) Pilot Free Trade Zone 215000
 中国·苏州·中国(江苏)自由贸易试验区苏州片区苏州工业园区海胜路1号的6号厂房南座 邮编: 215000

t (86-512) 62992980 www.sgs.com.cn
 t (86-512) 62992980 sgs.china@sgs.com



1-N12-PC3-15-15-M-9-CP-256QAM-Outer_Full-79@
0-Ant1-see graph-PASS



Unless otherwise agreed in writing, this document is issued by the Company subject to its General Conditions of Service printed overleaf, available on request or accessible at <http://www.sgs.com/en/Terms-and-Conditions.aspx> and, for electronic format documents, subject to Terms and Conditions for Electronic Documents at <http://www.sgs.com/en/Terms-and-Conditions/Terms-e-Documents.aspx>. Attention is drawn to the limitation of liability, indemnification and jurisdiction issues defined therein. Any holder of this document is advised that information contained hereon reflects the Company's findings at the time of its intervention only and within the limits of Client's instructions, if any. The Company's sole responsibility is to its Client and this document does not exonerate parties to a transaction from exercising all their rights and obligations under the transaction documents. This document cannot be reproduced except in full, without prior written approval of the Company. Any unauthorized alteration, forgery or falsification of the content or appearance of this document is unlawful and offenders may be prosecuted to the fullest extent of the law. Unless otherwise stated the results shown in this test report refer only to the sample(s) tested and such sample(s) are retained for 30 days only.

Attention: To check the authenticity of testing/inspection report & certificate, please contact us at telephone: (86-755) 8307 1443, or email: CN.Doccheck@sgs.com

South of No. 6 Plant, No. 1, Runsheng Road, Suzhou Industrial Park, Suzhou Area, China (Jiangsu) Pilot Free Trade Zone 215000
中国·苏州·中国(江苏)自由贸易试验区苏州片区苏州工业园区润胜路1号的6号厂房南楼 邮编: 215000

t (86-512) 62992980 www.sgs.com.cn
t (86-512) 62992980 sgs.china@sgs.com

26dB Bandwidth and Occupied Bandwidth for SA

Test Result

Band	SCS	Bandwidth	Modulation	Channel	RB Config	Result (99%)	Result (26dB)	Verdict
N12	15	5	DFT-QPSK	L	Outer_Full	4.478	4.990	PASS
N12	15	5	DFT-PI2BPSK	L	Outer_Full	4.487	5.110	PASS
N12	15	5	DFT-16QAM	L	Outer_Full	4.474	5.030	PASS
N12	15	5	DFT-64QAM	L	Outer_Full	4.475	5.130	PASS
N12	15	5	DFT-256QAM	L	Outer_Full	4.482	5.110	PASS
N12	15	5	CP-QPSK	L	Outer_Full	4.47	5.140	PASS
N12	15	5	CP-16QAM	L	Outer_Full	4.482	5.090	PASS
N12	15	5	CP-64QAM	L	Outer_Full	4.476	5.210	PASS
N12	15	5	CP-256QAM	L	Outer_Full	4.491	5.150	PASS
N12	15	5	DFT-QPSK	M	Outer_Full	4.485	5.120	PASS
N12	15	5	DFT-PI2BPSK	M	Outer_Full	4.485	5.160	PASS
N12	15	5	DFT-16QAM	M	Outer_Full	4.473	5.060	PASS
N12	15	5	DFT-64QAM	M	Outer_Full	4.47	5.090	PASS
N12	15	5	DFT-256QAM	M	Outer_Full	4.477	5.050	PASS
N12	15	5	CP-QPSK	M	Outer_Full	4.48	5.240	PASS
N12	15	5	CP-16QAM	M	Outer_Full	4.474	5.140	PASS
N12	15	5	CP-64QAM	M	Outer_Full	4.48	5.150	PASS
N12	15	5	CP-256QAM	M	Outer_Full	4.492	5.150	PASS
N12	15	5	DFT-QPSK	H	Outer_Full	4.486	5.130	PASS
N12	15	5	DFT-PI2BPSK	H	Outer_Full	4.481	5.110	PASS
N12	15	5	DFT-16QAM	H	Outer_Full	4.47	5.050	PASS
N12	15	5	DFT-64QAM	H	Outer_Full	4.477	5.130	PASS
N12	15	5	DFT-256QAM	H	Outer_Full	4.476	5.020	PASS
N12	15	5	CP-QPSK	H	Outer_Full	4.492	5.210	PASS
N12	15	5	CP-16QAM	H	Outer_Full	4.475	5.130	PASS
N12	15	5	CP-64QAM	H	Outer_Full	4.481	5.170	PASS
N12	15	5	CP-256QAM	H	Outer_Full	4.489	5.190	PASS
N12	15	10	DFT-QPSK	L	Outer_Full	8.918	9.720	PASS
N12	15	10	DFT-PI2BPSK	L	Outer_Full	8.931	9.660	PASS
N12	15	10	DFT-16QAM	L	Outer_Full	8.928	9.760	PASS
N12	15	10	DFT-64QAM	L	Outer_Full	8.938	9.760	PASS
N12	15	10	DFT-256QAM	L	Outer_Full	8.918	9.800	PASS



Unless otherwise agreed in writing, this document is issued by the Company subject to its General Conditions of Service printed overleaf, available on request or accessible at <http://www.sgs.com/en/Terms-and-Conditions.aspx> and, for electronic format documents, subject to Terms and Conditions for Electronic Documents at <http://www.sgs.com/en/Terms-and-Conditions/Terms-e-Documents.aspx>. Attention is drawn to the limitation of liability, indemnification and jurisdiction issues defined therein. Any holder of this document is advised that information contained hereon reflects the Company's findings at the time of its intervention only and within the limits of Client's instructions, if any. The Company's sole responsibility is to its Client and this document does not exonerate parties to a transaction from exercising all their rights and obligations under the transaction documents. This document cannot be reproduced except in full, without prior written approval of the Company. Any unauthorized alteration, forgery or falsification of the content or appearance of this document is unlawful and offenders may be prosecuted to the fullest extent of the law. Unless otherwise stated the results shown in this test report refer only to the sample(s) tested and such sample(s) are retained for 30 days only.

Attention: To check the authenticity of testing/inspection report & certificate, please contact us at telephone: (86-755) 8307 1443, or email: CN.Doccheck@sgs.com

South of No. 6 Plant, No. 1, Pansheng Road, Suzhou Industrial Park, Suzhou Area, China (Jiangsu) Pilot Free Trade Zone 215000
 中国·苏州·中国(江苏)自由贸易试验区苏州片区苏州工业园区海胜路1号的6号厂房南楼 邮编: 215000

t (86-512) 62992980 www.sgs.com.cn
 t (86-512) 62992980 sgs.china@sgs.com



Report No.: SEWA2204000008RG02

Rev.: 01

Page: 13 of 52

N12	15	10	CP-QPSK	L	Outer_Full	9.282	10.220	PASS
N12	15	10	CP-16QAM	L	Outer_Full	9.284	10.240	PASS
N12	15	10	CP-64QAM	L	Outer_Full	9.294	10.220	PASS
N12	15	10	CP-256QAM	L	Outer_Full	9.284	10.140	PASS
N12	15	10	DFT-QPSK	M	Outer_Full	8.937	9.620	PASS
N12	15	10	DFT-PI2BPSK	M	Outer_Full	8.945	9.620	PASS
N12	15	10	DFT-16QAM	M	Outer_Full	8.932	9.680	PASS
N12	15	10	DFT-64QAM	M	Outer_Full	8.927	9.660	PASS
N12	15	10	DFT-256QAM	M	Outer_Full	8.933	9.620	PASS
N12	15	10	CP-QPSK	M	Outer_Full	9.3	10.300	PASS
N12	15	10	CP-16QAM	M	Outer_Full	9.28	10.060	PASS
N12	15	10	CP-64QAM	M	Outer_Full	9.296	10.200	PASS
N12	15	10	CP-256QAM	M	Outer_Full	9.285	10.100	PASS
N12	15	10	DFT-QPSK	H	Outer_Full	8.943	9.720	PASS
N12	15	10	DFT-PI2BPSK	H	Outer_Full	8.941	9.840	PASS
N12	15	10	DFT-16QAM	H	Outer_Full	8.948	9.620	PASS
N12	15	10	DFT-64QAM	H	Outer_Full	8.939	9.740	PASS
N12	15	10	DFT-256QAM	H	Outer_Full	8.939	9.680	PASS
N12	15	10	CP-QPSK	H	Outer_Full	9.302	10.240	PASS
N12	15	10	CP-16QAM	H	Outer_Full	9.287	10.240	PASS
N12	15	10	CP-64QAM	H	Outer_Full	9.319	10.260	PASS
N12	15	10	CP-256QAM	H	Outer_Full	9.305	10.200	PASS
N12	15	15	DFT-QPSK	L	Outer_Full	13.488	14.460	PASS
N12	15	15	DFT-PI2BPSK	L	Outer_Full	13.401	14.340	PASS
N12	15	15	DFT-16QAM	L	Outer_Full	13.428	14.400	PASS
N12	15	15	DFT-64QAM	L	Outer_Full	13.411	14.490	PASS
N12	15	15	DFT-256QAM	L	Outer_Full	13.416	14.490	PASS
N12	15	15	CP-QPSK	L	Outer_Full	14.115	15.240	PASS
N12	15	15	CP-16QAM	L	Outer_Full	14.096	15.090	PASS
N12	15	15	CP-64QAM	L	Outer_Full	14.135	15.180	PASS
N12	15	15	CP-256QAM	L	Outer_Full	14.125	15.240	PASS
N12	15	15	DFT-QPSK	M	Outer_Full	13.492	14.430	PASS
N12	15	15	DFT-PI2BPSK	M	Outer_Full	13.433	14.370	PASS
N12	15	15	DFT-16QAM	M	Outer_Full	13.438	14.490	PASS
N12	15	15	DFT-64QAM	M	Outer_Full	13.424	14.550	PASS
N12	15	15	DFT-256QAM	M	Outer_Full	13.425	14.430	PASS
N12	15	15	CP-QPSK	M	Outer_Full	14.134	15.300	PASS
N12	15	15	CP-16QAM	M	Outer_Full	14.12	15.120	PASS



Unless otherwise agreed in writing, this document is issued by the Company subject to its General Conditions of Service printed overleaf, available on request or accessible at <http://www.sgs.com/en/Terms-and-Conditions.aspx> and, for electronic format documents, subject to Terms and Conditions for Electronic Documents at <http://www.sgs.com/en/Terms-and-Conditions/Terms-e-Documents.aspx>. Attention is drawn to the limitation of liability, indemnification and jurisdiction issues defined therein. Any holder of this document is advised that information contained hereon reflects the Company's findings at the time of its intervention only and within the limits of Client's instructions, if any. The Company's sole responsibility is to its Client and this document does not exonerate parties to a transaction from exercising all their rights and obligations under the transaction documents. This document cannot be reproduced except in full, without prior written approval of the Company. Any unauthorized alteration, forgery or falsification of the content or appearance of this document is unlawful and offenders may be prosecuted to the fullest extent of the law. Unless otherwise stated the results shown in this test report refer only to the sample(s) tested and such sample(s) are retained for 30 days only.
Attention: To check the authenticity of testing/inspection report & certificate, please contact us at telephone: (86-755) 8307 1443, or email: CN.Doccheck@sgs.com
 South of No. 6 Plant, No. 1, Pansheng Road, Suzhou Industrial Park, Suzhou Area, China (Jiangsu) Pilot Free Trade Zone 215000 t (86-512) 62992980 www.sgs.com.cn
 中国·苏州·中国(江苏)自由贸易试验区苏州片区苏州工业园区海胜路1号的6号厂房南楼 邮编: 215000 t (86-512) 62992980 sgs.china@sgs.com



Report No.: SEWA2204000008RG02

Rev.: 01

Page: 14 of 52

N12	15	15	CP-64QAM	M	Outer_Full	14.158	15.210	PASS
N12	15	15	CP-256QAM	M	Outer_Full	14.147	15.270	PASS
N12	15	15	DFT-QPSK	H	Outer_Full	13.5	14.460	PASS
N12	15	15	DFT-PI2BPSK	H	Outer_Full	13.425	14.340	PASS
N12	15	15	DFT-16QAM	H	Outer_Full	13.439	14.550	PASS
N12	15	15	DFT-64QAM	H	Outer_Full	13.416	14.490	PASS
N12	15	15	DFT-256QAM	H	Outer_Full	13.45	14.610	PASS
N12	15	15	CP-QPSK	H	Outer_Full	14.124	15.270	PASS
N12	15	15	CP-16QAM	H	Outer_Full	14.124	15.240	PASS
N12	15	15	CP-64QAM	H	Outer_Full	14.143	15.090	PASS
N12	15	15	CP-256QAM	H	Outer_Full	14.145	15.270	PASS

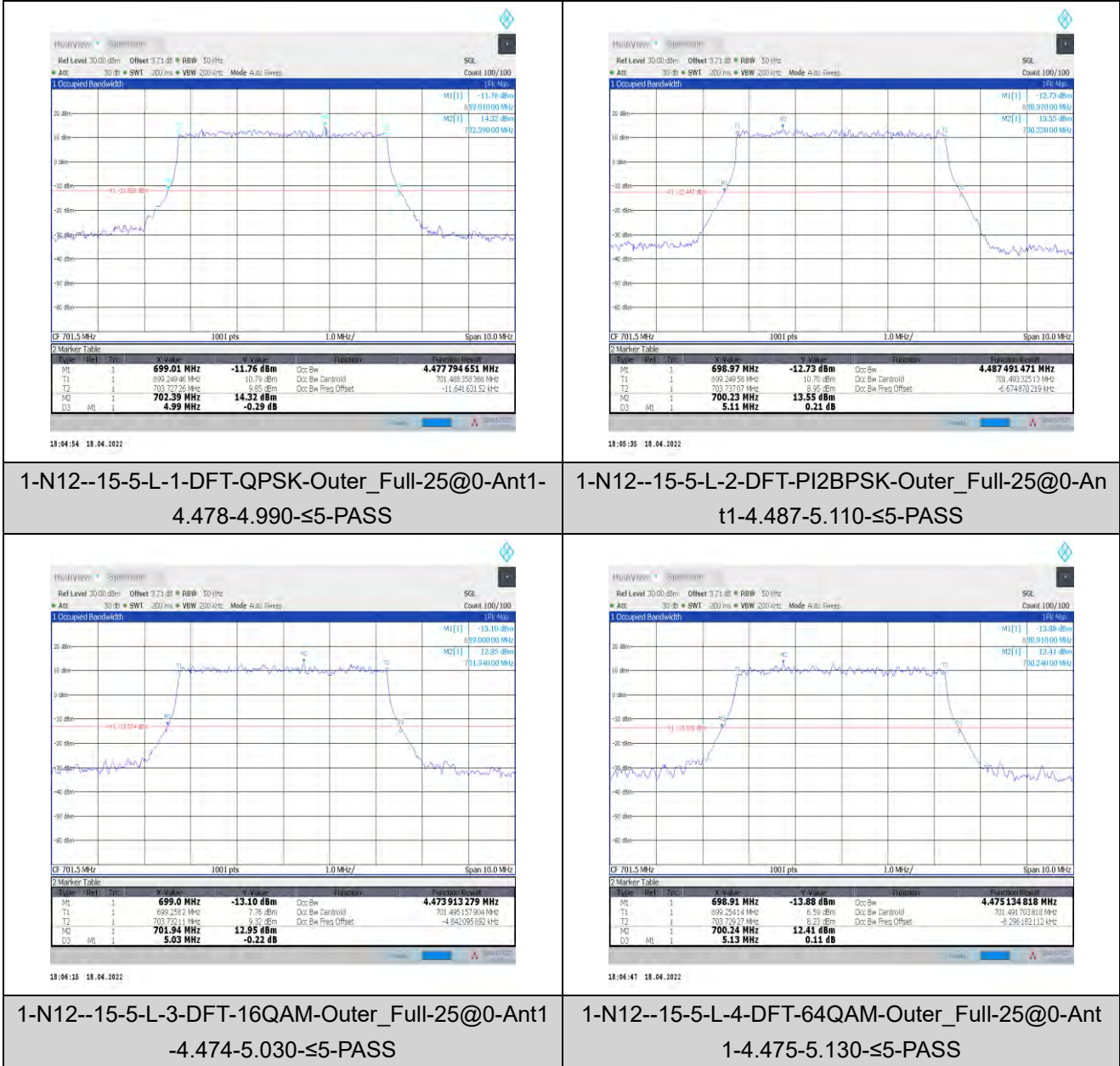


Unless otherwise agreed in writing, this document is issued by the Company subject to its General Conditions of Service printed overleaf, available on request or accessible at <http://www.sgs.com/en/Terms-and-Conditions.aspx> and, for electronic format documents, subject to Terms and Conditions for Electronic Documents at <http://www.sgs.com/en/Terms-and-Conditions/Terms-e-Documents.aspx>. Attention is drawn to the limitation of liability, indemnification and jurisdiction issues defined therein. Any holder of this document is advised that information contained hereon reflects the Company's findings at the time of its intervention only and within the limits of Client's instructions, if any. The Company's sole responsibility is to its Client and this document does not exonerate parties to a transaction from exercising all their rights and obligations under the transaction documents. This document cannot be reproduced except in full, without prior written approval of the Company. Any unauthorized alteration, forgery or falsification of the content or appearance of this document is unlawful and offenders may be prosecuted to the fullest extent of the law. Unless otherwise stated the results shown in this test report refer only to the sample(s) tested and such sample(s) are retained for 30 days only.
Attention: To check the authenticity of testing/inspection report & certificate, please contact us at telephone: (86-755) 8307 1443, or email: CN.Doccheck@sgs.com

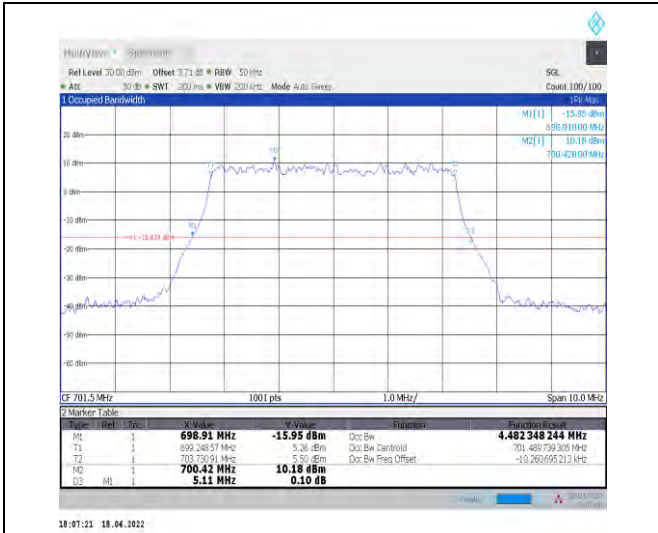
South of No. 6 Plant, No. 1, Runsheng Road, Suzhou Industrial Park, Suzhou Area, China (Jiangsu) Pilot Free Trade Zone 215000
 中国·苏州·中国(江苏)自由贸易试验区苏州片区苏州工业园区润胜路1号的6号厂房南楼 邮编: 215000

t (86-512) 62992980 www.sgs.com.cn
 t (86-512) 62992980 sgs.china@sgs.com

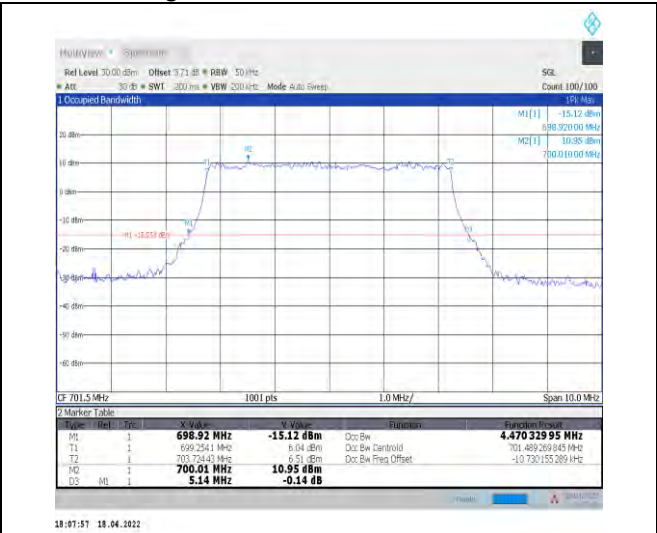
Test Graphs



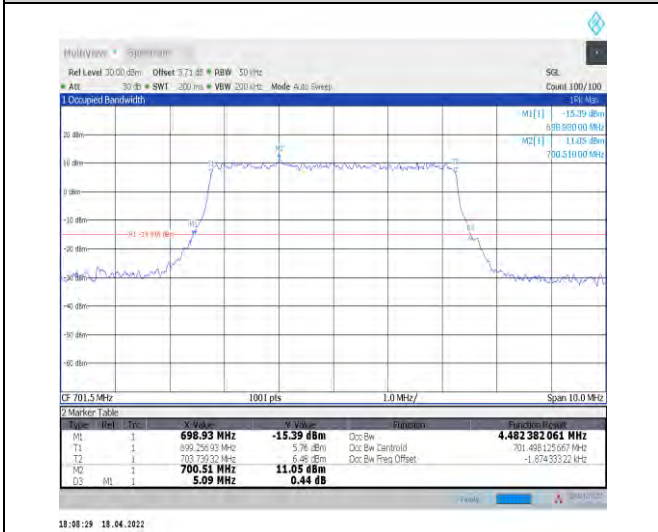
Unless otherwise agreed in writing, this document is issued by the Company subject to its General Conditions of Service printed overleaf, available on request or accessible at <http://www.sgs.com/en/Terms-and-Conditions.aspx> and, for electronic format documents, subject to Terms and Conditions for Electronic Documents at <http://www.sgs.com/en/Terms-and-Conditions/Terms-e-Documents.aspx>. Attention is drawn to the limitation of liability, indemnification and jurisdiction issues defined therein. Any holder of this document is advised that information contained hereon reflects the Company's findings at the time of its intervention only and within the limits of Client's instructions, if any. The Company's sole responsibility is to its Client and this document does not exonerate parties to a transaction from exercising all their rights and obligations under the transaction documents. This document cannot be reproduced except in full, without prior written approval of the Company. Any unauthorized alteration, forgery or falsification of the content or appearance of this document is unlawful and offenders may be prosecuted to the fullest extent of the law. Unless otherwise stated the results shown in this test report refer only to the sample(s) tested and such sample(s) are retained for 30 days only.
Attention: To check the authenticity of testing/inspection report & certificate, please contact us at telephone: (86-755) 8307 1443, or email: CN.Doccheck@sgs.com
 South of No. 6 Plant, No. 1, Runsheng Road, Suzhou Industrial Park, Suzhou Area, China (Jiangsu) Pilot Free Trade Zone 215000 t (86-512) 62992980 www.sgs.com.cn
 中国·苏州·中国(江苏)自由贸易试验区苏州片区苏州工业园区海澄路1号的6号厂房南座 邮编: 215000 t (86-512) 62992980 sgs.china@sgs.com



1-N12--15-5-L-5-DFT-256QAM-Outer_Full-25@0-Ant
 1-4.482-5.110-≤5-PASS



1-N12--15-5-L-6-CP-QPSK-Outer_Full-25@0-Ant1-4
 .47-5.140-≤5-PASS



1-N12--15-5-L-7-CP-16QAM-Outer_Full-25@0-Ant1-
 4.482-5.090-≤5-PASS



1-N12--15-5-L-8-CP-64QAM-Outer_Full-25@0-Ant1-
 4.476-5.210-≤5-PASS



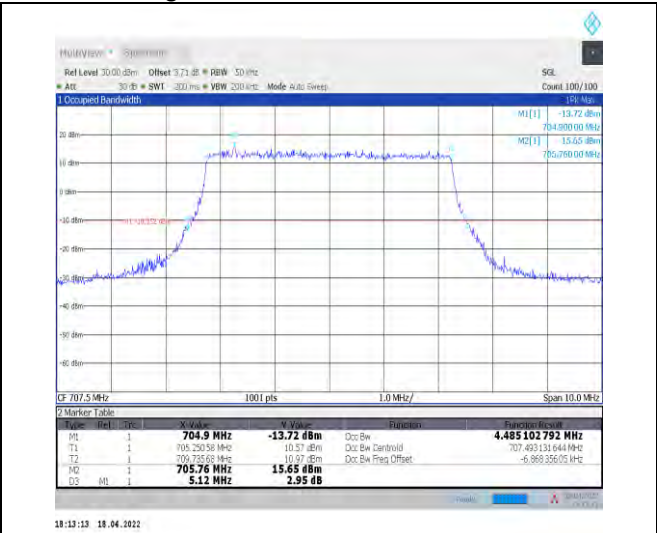
Unless otherwise agreed in writing, this document is issued by the Company subject to its General Conditions of Service printed overleaf, available on request or accessible at <http://www.sgs.com/en/Terms-and-Conditions.aspx> and, for electronic format documents, subject to Terms and Conditions for Electronic Documents at <http://www.sgs.com/en/Terms-and-Conditions/Terms-e-Documents.aspx>. Attention is drawn to the limitation of liability, indemnification and jurisdiction issues defined therein. Any holder of this document is advised that information contained hereon reflects the Company's findings at the time of its intervention only and within the limits of Client's instructions, if any. The Company's sole responsibility is to its Client and this document does not exonerate parties to a transaction from exercising all their rights and obligations under the transaction documents. This document cannot be reproduced except in full, without prior written approval of the Company. Any unauthorized alteration, forgery or falsification of the content or appearance of this document is unlawful and offenders may be prosecuted to the fullest extent of the law. Unless otherwise stated the results shown in this test report refer only to the sample(s) tested and such sample(s) are retained for 30 days only.
Attention: To check the authenticity of testing/inspection report & certificate, please contact us at telephone: (86-755) 8307 1443, or email: CN.Doccheck@sgs.com

South of No. 6 Plant, No. 1, Pulinsheng Road, Suzhou Industrial Park, Suzhou Area, China (Jiangsu) Pilot Free Trade Zone 215000
 中国·苏州·中国(江苏)自由贸易试验区苏州片区苏州工业园区海胜路1号的6号厂房南座 邮编: 215000

t (86-512) 62992980 www.sgs.com.cn
 t (86-512) 62992980 sgs.china@sgs.com



1-N12--15-5-L-9-CP-256QAM-Outer_Full-25@0-Ant1
 -4.491-5.150-≤5-PASS



1-N12--15-5-M-1-DFT-QPSK-Outer_Full-25@0-Ant1
 -4.485-5.120-≤5-PASS



1-N12--15-5-M-2-DFT-PI2BPSK-Outer_Full-25@0-Ant1
 -4.485-5.160-≤5-PASS



1-N12--15-5-M-3-DFT-16QAM-Outer_Full-25@0-Ant1
 1-4.473-5.060-≤5-PASS



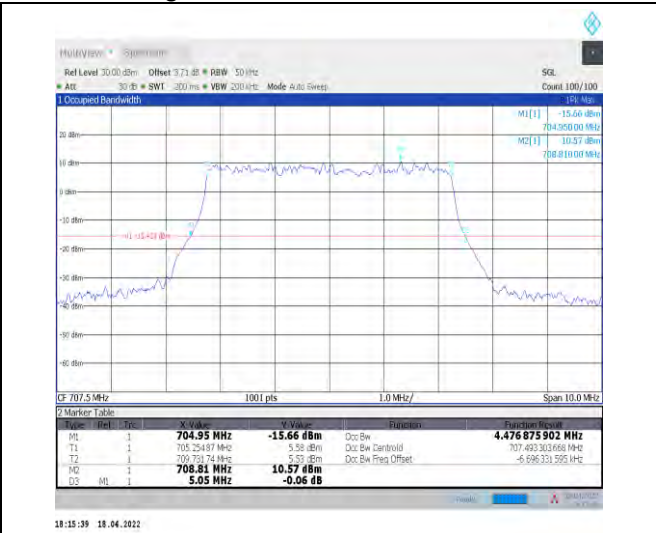
Unless otherwise agreed in writing, this document is issued by the Company subject to its General Conditions of Service printed overleaf, available on request or accessible at <http://www.sgs.com/en/Terms-and-Conditions.aspx> and, for electronic format documents, subject to Terms and Conditions for Electronic Documents at <http://www.sgs.com/en/Terms-and-Conditions/Terms-e-Documents.aspx>. Attention is drawn to the limitation of liability, indemnification and jurisdiction issues defined therein. Any holder of this document is advised that information contained hereon reflects the Company's findings at the time of its intervention only and within the limits of Client's instructions, if any. The Company's sole responsibility is to its Client and this document does not exonerate parties to a transaction from exercising all their rights and obligations under the transaction documents. This document cannot be reproduced except in full, without prior written approval of the Company. Any unauthorized alteration, forgery or falsification of the content or appearance of this document is unlawful and offenders may be prosecuted to the fullest extent of the law. Unless otherwise stated the results shown in this test report refer only to the sample(s) tested and such sample(s) are retained for 30 days only.
Attention: To check the authenticity of testing/inspection report & certificate, please contact us at telephone: (86-755) 8307 1443, or email: CN.Doccheck@sgs.com

South of No. 6 Plant, No. 1, Pansheng Road, Suzhou Industrial Park, Suzhou Area, China (Jiangsu) Pilot Free Trade Zone 215000
 中国·苏州·中国(江苏)自由贸易试验区苏州片区苏州工业园区海胜路1号的6号厂房南座 邮编: 215000

t (86-512) 62992980 www.sgs.com.cn
 t (86-512) 62992980 sgs.china@sgs.com



1-N12--15-5-M-4-DFT-64QAM-Outer_Full-25@0-Ant
1-4.47-5.090-≤5-PASS



1-N12--15-5-M-5-DFT-256QAM-Outer_Full-25@0-A
nt1-4.477-5.050-≤5-PASS



1-N12--15-5-M-6-CP-QPSK-Outer_Full-25@0-Ant1-4
.48-5.240-≤5-PASS



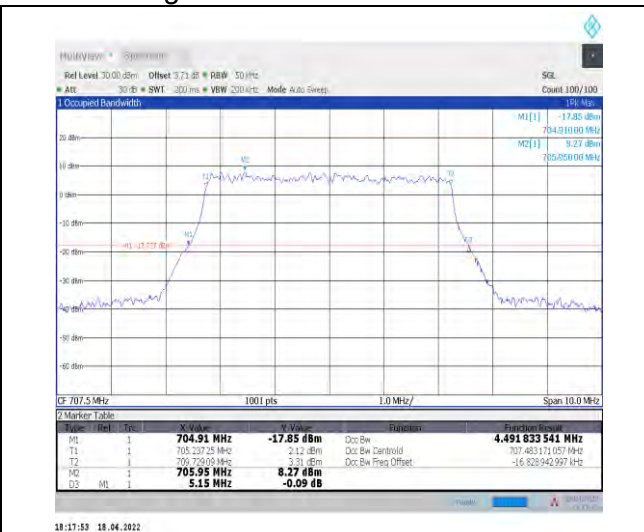
1-N12--15-5-M-7-CP-16QAM-Outer_Full-25@0-Ant1
-4.474-5.140-≤5-PASS



Unless otherwise agreed in writing, this document is issued by the Company subject to its General Conditions of Service printed overleaf, available on request or accessible at <http://www.sgs.com/en/Terms-and-Conditions.aspx> and, for electronic format documents, subject to Terms and Conditions for Electronic Documents at <http://www.sgs.com/en/Terms-and-Conditions/Terms-e-Documents.aspx>. Attention is drawn to the limitation of liability, indemnification and jurisdiction issues defined therein. Any holder of this document is advised that information contained hereon reflects the Company's findings at the time of its intervention only and within the limits of Client's instructions, if any. The Company's sole responsibility is to its Client and this document does not exonerate parties to a transaction from exercising all their rights and obligations under the transaction documents. This document cannot be reproduced except in full, without prior written approval of the Company. Any unauthorized alteration, forgery or falsification of the content or appearance of this document is unlawful and offenders may be prosecuted to the fullest extent of the law. Unless otherwise stated the results shown in this test report refer only to the sample(s) tested and such sample(s) are retained for 30 days only.
Attention: To check the authenticity of testing/inspection report & certificate, please contact us at telephone: (86-755) 8307 1443, or email: CN.Doccheck@sgs.com

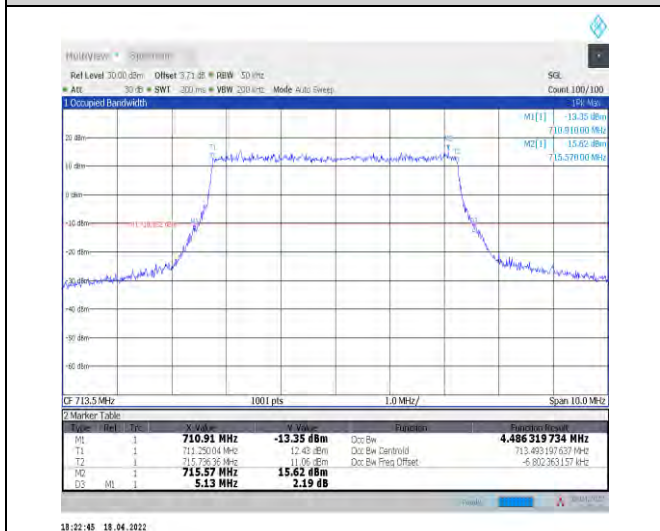
South of No. 6 Plant, No. 1, Pulinsheng Road, Suzhou Industrial Park, Suzhou Area, China (Jiangsu) Pilot Free Trade Zone 215000
中国·苏州·中国(江苏)自由贸易试验区苏州片区苏州工业园区海胜路1号的6号厂房南座 邮编: 215000

t (86-512) 62992980 www.sgs.com.cn
t (86-512) 62992980 sgs.china@sgs.com



1-N12--15-5-M-8-CP-64QAM-Outer_Full-25@0-Ant1
 -4.48-5.150-≤5-PASS

1-N12--15-5-M-9-CP-256QAM-Outer_Full-25@0-Ant
 1-4.492-5.150-≤5-PASS



1-N12--15-5-H-1-DFT-QPSK-Outer_Full-25@0-Ant1-
 4.486-5.130-≤5-PASS

1-N12--15-5-H-2-DFT-PI2BPSK-Outer_Full-25@0-A
 nt1-4.481-5.110-≤5-PASS



Unless otherwise agreed in writing, this document is issued by the Company subject to its General Conditions of Service printed overleaf, available on request or accessible at <http://www.sgs.com/en/Terms-and-Conditions.aspx> and, for electronic format documents, subject to Terms and Conditions for Electronic Documents at <http://www.sgs.com/en/Terms-and-Conditions/Terms-e-Documents.aspx>. Attention is drawn to the limitation of liability, indemnification and jurisdiction issues defined therein. Any holder of this document is advised that information contained hereon reflects the Company's findings at the time of its intervention only and within the limits of Client's instructions, if any. The Company's sole responsibility is to its Client and this document does not exonerate parties to a transaction from exercising all their rights and obligations under the transaction documents. This document cannot be reproduced except in full, without prior written approval of the Company. Any unauthorized alteration, forgery or falsification of the content or appearance of this document is unlawful and offenders may be prosecuted to the fullest extent of the law. Unless otherwise stated the results shown in this test report refer only to the sample(s) tested and such sample(s) are retained for 30 days only.
Attention: To check the authenticity of testing/inspection report & certificate, please contact us at telephone: (86-755) 8307 1443, or email: CN.Doccheck@sgs.com

South of No. 6 Plant, No. 1, Punsheng Road, Suzhou Industrial Park, Suzhou Area, China (Jiangsu) Pilot Free Trade Zone 215000 t (86-512) 62992980 www.sgs.com.cn
 中国·苏州·中国(江苏)自由贸易试验区苏州片区苏州工业园区海胜路1号的6号厂房南座 邮编: 215000 t (86-512) 62992980 sgs.china@sgs.com



1-N12--15-5-H-3-DFT-16QAM-Outer_Full-25@0-Ant
1-4.47-5.050-≤5-PASS

1-N12--15-5-H-4-DFT-64QAM-Outer_Full-25@0-Ant
1-4.477-5.130-≤5-PASS



1-N12--15-5-H-5-DFT-256QAM-Outer_Full-25@0-Ant
t1-4.476-5.020-≤5-PASS

1-N12--15-5-H-6-CP-QPSK-Outer_Full-25@0-Ant1-4
.492-5.210-≤5-PASS

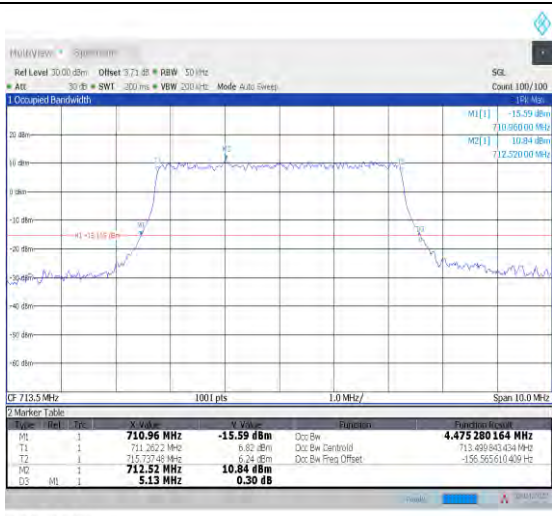


Unless otherwise agreed in writing, this document is issued by the Company subject to its General Conditions of Service printed overleaf, available on request or accessible at <http://www.sgs.com/en/Terms-and-Conditions.aspx> and, for electronic format documents, subject to Terms and Conditions for Electronic Documents at <http://www.sgs.com/en/Terms-and-Conditions/Terms-e-Documents.aspx>. Attention is drawn to the limitation of liability, indemnification and jurisdiction issues defined therein. Any holder of this document is advised that information contained hereon reflects the Company's findings at the time of its intervention only and within the limits of Client's instructions, if any. The Company's sole responsibility is to its Client and this document does not exonerate parties to a transaction from exercising all their rights and obligations under the transaction documents. This document cannot be reproduced except in full, without prior written approval of the Company. Any unauthorized alteration, forgery or falsification of the content or appearance of this document is unlawful and offenders may be prosecuted to the fullest extent of the law. Unless otherwise stated the results shown in this test report refer only to the sample(s) tested and such sample(s) are retained for 30 days only.

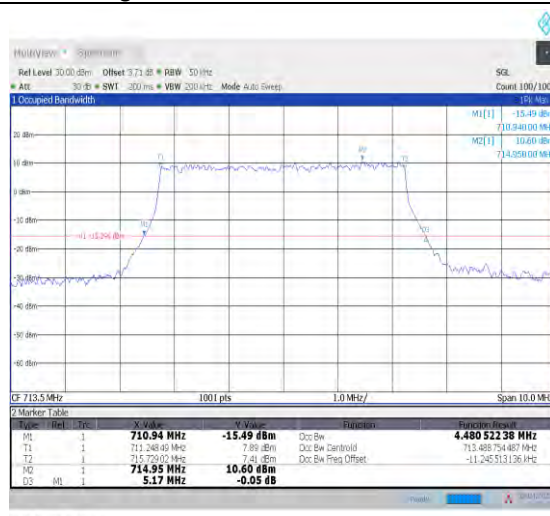
Attention: To check the authenticity of testing/inspection report & certificate, please contact us at telephone: (86-755) 8307 1443, or email: CN.Doccheck@sgs.com

South of No. 6 Plant, No. 1, Pansheng Road, Suzhou Industrial Park, Suzhou Area, China (Jiangsu) Pilot Free Trade Zone 215000
中国·苏州·中国(江苏)自由贸易试验区苏州片区苏州工业园区海胜路1号的6号厂房南座 邮编: 215000

t (86-512) 62992980 www.sgs.com.cn
t (86-512) 62992980 sgs.china@sgs.com



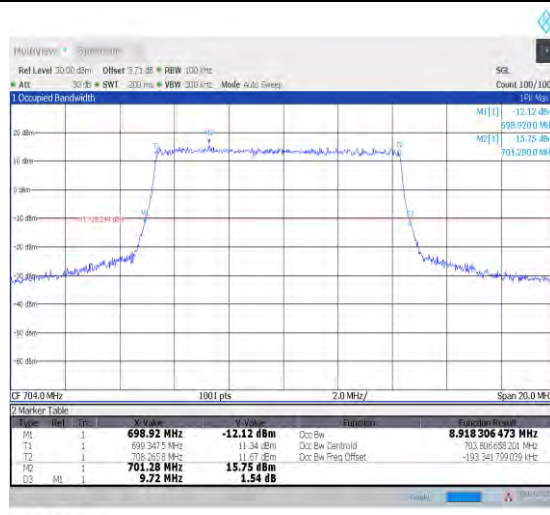
1-N12--15-5-H-7-CP-16QAM-Outer_Full-25@0-Ant1
 4.475-5.130-≤5-PASS



1-N12--15-5-H-8-CP-64QAM-Outer_Full-25@0-Ant1
 -4.481-5.170-≤5-PASS



1-N12--15-5-H-9-CP-256QAM-Outer_Full-25@0-Ant
 1-4.489-5.190-≤5-PASS



1-N12--15-10-L-1-DFT-QPSK-Outer_Full-50@0-Ant1
 -8.918-9.720-≤10-PASS

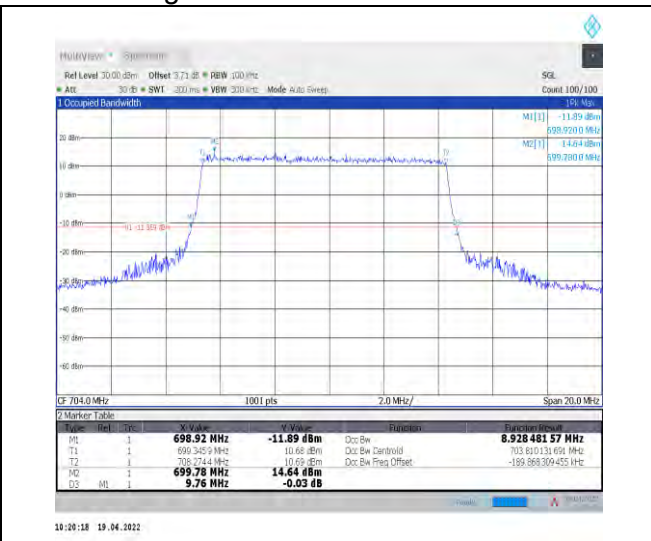


Unless otherwise agreed in writing, this document is issued by the Company subject to its General Conditions of Service printed overleaf, available on request or accessible at <http://www.sgs.com/en/Terms-and-Conditions.aspx> and, for electronic format documents, subject to Terms and Conditions for Electronic Documents at <http://www.sgs.com/en/Terms-and-Conditions/Terms-e-Documents.aspx>. Attention is drawn to the limitation of liability, indemnification and jurisdiction issues defined therein. Any holder of this document is advised that information contained hereon reflects the Company's findings at the time of its intervention only and within the limits of Client's instructions, if any. The Company's sole responsibility is to its Client and this document does not exonerate parties to a transaction from exercising all their rights and obligations under the transaction documents. This document cannot be reproduced except in full, without prior written approval of the Company. Any unauthorized alteration, forgery or falsification of the content or appearance of this document is unlawful and offenders may be prosecuted to the fullest extent of the law. Unless otherwise stated the results shown in this test report refer only to the sample(s) tested and such sample(s) are retained for 30 days only.
Attention: To check the authenticity of testing/inspection report & certificate, please contact us at telephone: (86-755) 8307 1443, or email: CN.Doccheck@sgs.com

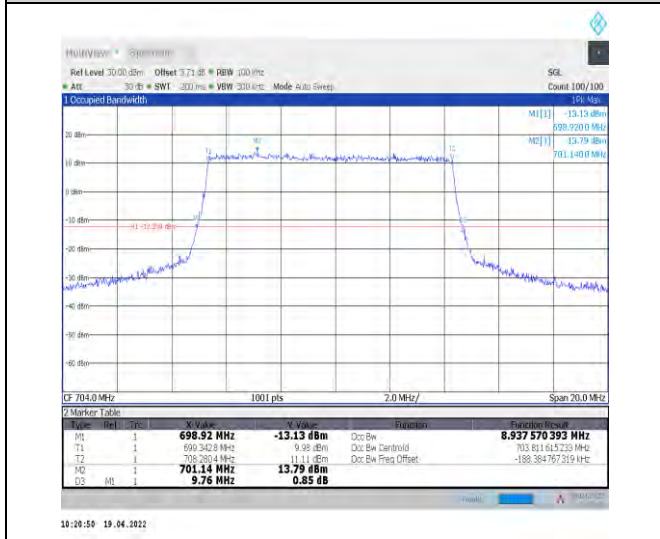
South of No. 6 Plant, No. 1, Pansheng Road, Suzhou Industrial Park, Suzhou Area, China (Jiangsu) Pilot Free Trade Zone 215000 t (86-512) 62992980 www.sgs.com.cn
 中国·苏州·中国(江苏)自由贸易试验区苏州片区苏州工业园区海胜路1号的6号厂房南座 邮编: 215000 t (86-512) 62992980 sgs.china@sgs.com



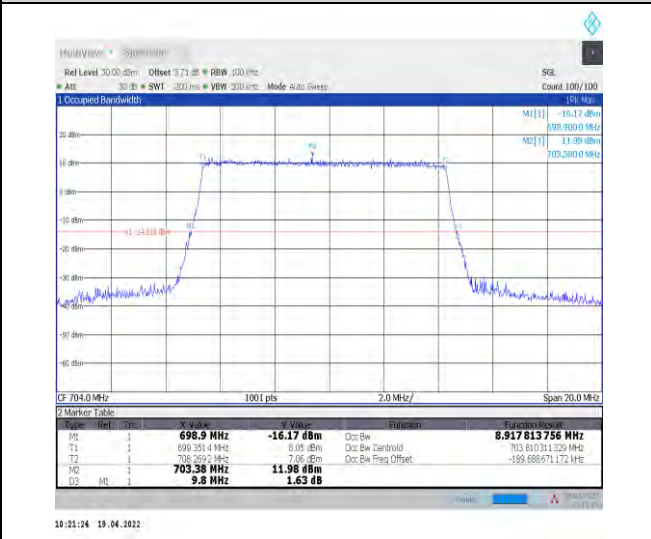
1-N12--15-10-L-2-DFT-PI2BPSK-Outer_Full-50@0-A
 nt1-8.931-9.660-≤10-PASS



1-N12--15-10-L-3-DFT-16QAM-Outer_Full-50@0-An
 t1-8.928-9.760-≤10-PASS

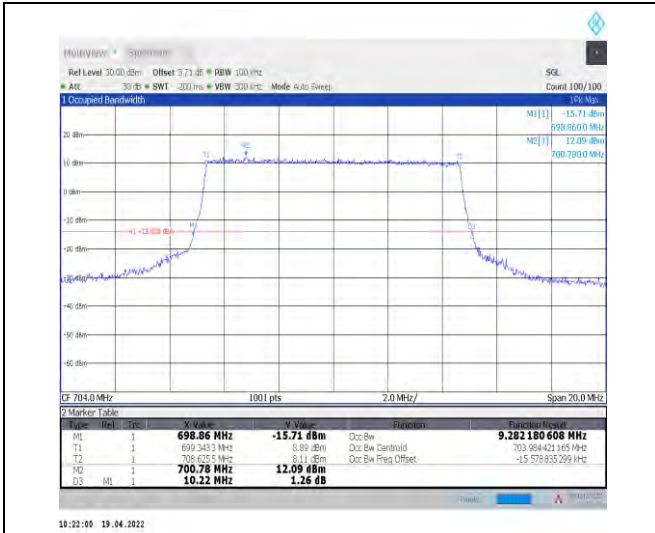


1-N12--15-10-L-4-DFT-64QAM-Outer_Full-50@0-Ant
 1-8.938-9.760-≤10-PASS

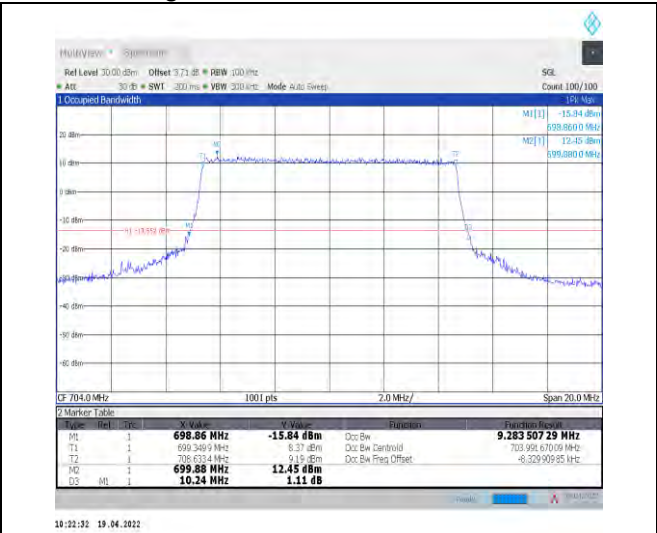


1-N12--15-10-L-5-DFT-256QAM-Outer_Full-50@0-A
 nt1-8.918-9.800-≤10-PASS

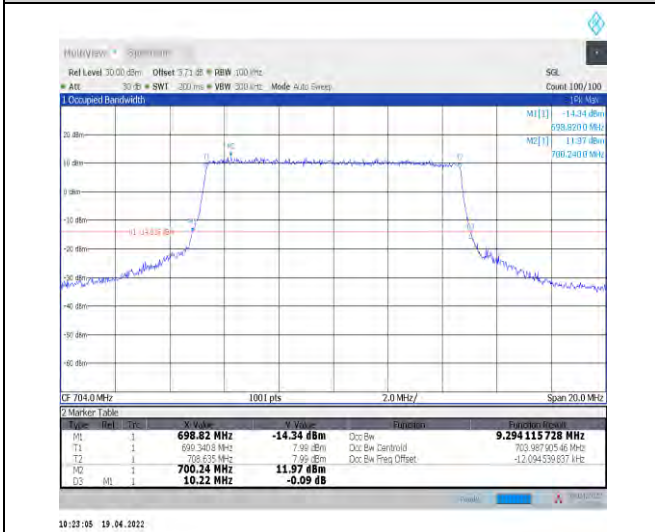




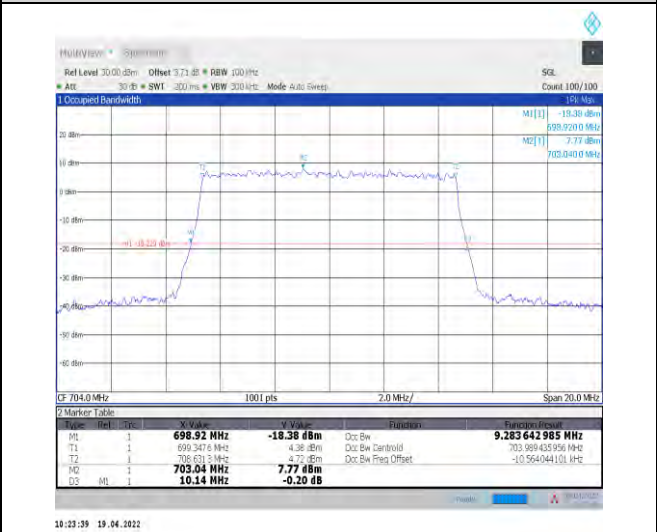
1-N12--15-10-L-6-CP-QPSK-Outer_Full-52@0-Ant1-9.282-10.220-≤10-PASS



1-N12--15-10-L-7-CP-16QAM-Outer_Full-52@0-Ant1-9.284-10.240-≤10-PASS



1-N12--15-10-L-8-CP-64QAM-Outer_Full-52@0-Ant1-9.294-10.220-≤10-PASS



1-N12--15-10-L-9-CP-256QAM-Outer_Full-52@0-Ant1-9.284-10.140-≤10-PASS



Unless otherwise agreed in writing, this document is issued by the Company subject to its General Conditions of Service printed overleaf, available on request or accessible at <http://www.sgs.com/en/Terms-and-Conditions.aspx> and, for electronic format documents, subject to Terms and Conditions for Electronic Documents at <http://www.sgs.com/en/Terms-and-Conditions/Terms-e-Documents.aspx>. Attention is drawn to the limitation of liability, indemnification and jurisdiction issues defined therein. Any holder of this document is advised that information contained hereon reflects the Company's findings at the time of its intervention only and within the limits of Client's instructions, if any. The Company's sole responsibility is to its Client and this document does not exonerate parties to a transaction from exercising all their rights and obligations under the transaction documents. This document cannot be reproduced except in full, without prior written approval of the Company. Any unauthorized alteration, forgery or falsification of the content or appearance of this document is unlawful and offenders may be prosecuted to the fullest extent of the law. Unless otherwise stated the results shown in this test report refer only to the sample(s) tested and such sample(s) are retained for 30 days only.

Attention: To check the authenticity of testing/inspection report & certificate, please contact us at telephone: (86-755) 8307 1443, or email: CN.Doccheck@sgs.com

South of No. 6 Plant, No. 1, Pansheng Road, Suzhou Industrial Park, Suzhou Area, China (Jiangsu) Pilot Free Trade Zone 215000
 中国·苏州·中国(江苏)自由贸易试验区苏州片区苏州工业园区海胜路1号的6号厂房南楼 邮编: 215000

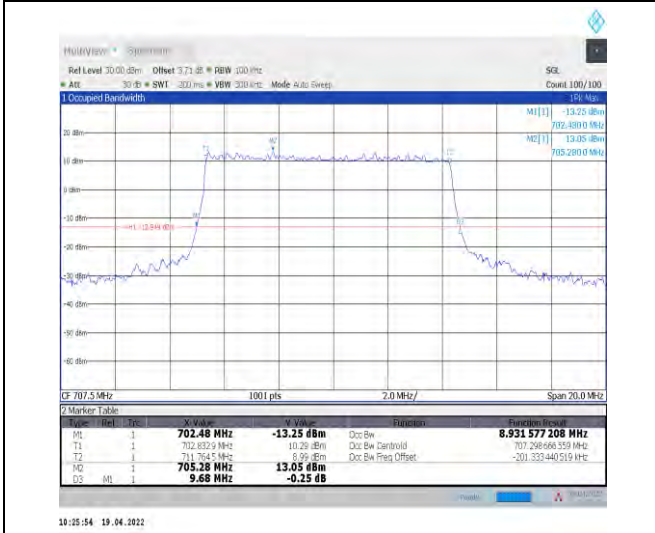
t (86-512) 62992980 www.sgs.com.cn
 t (86-512) 62992980 sgs.china@sgs.com



1-N12--15-10-M-1-DFT-QPSK-Outer_Full-50@0-Ant
1-8.937-9.620-≤10-PASS



1-N12--15-10-M-2-DFT-PI2BPSK-Outer_Full-50@0-Ant1-8.945-9.620-≤10-PASS



1-N12--15-10-M-3-DFT-16QAM-Outer_Full-50@0-Ant
t1-8.932-9.680-≤10-PASS



1-N12--15-10-M-4-DFT-64QAM-Outer_Full-50@0-Ant1-8.927-9.660-≤10-PASS



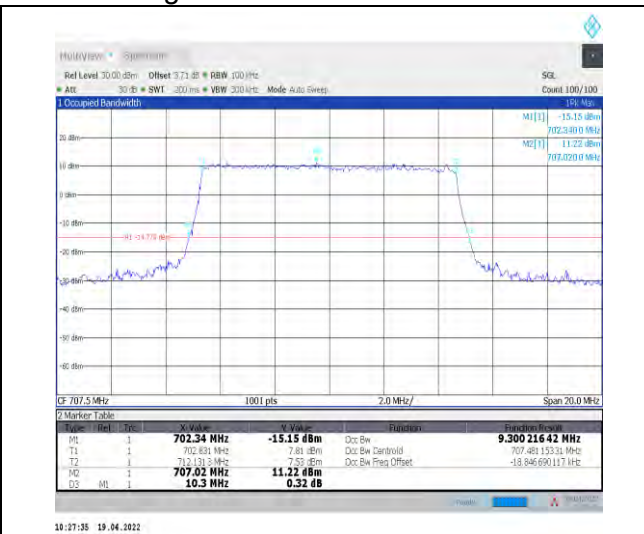
Unless otherwise agreed in writing, this document is issued by the Company subject to its General Conditions of Service printed overleaf, available on request or accessible at <http://www.sgs.com/en/Terms-and-Conditions.aspx> and, for electronic format documents, subject to Terms and Conditions for Electronic Documents at <http://www.sgs.com/en/Terms-and-Conditions/Terms-e-Documents.aspx>. Attention is drawn to the limitation of liability, indemnification and jurisdiction issues defined therein. Any holder of this document is advised that information contained hereon reflects the Company's findings at the time of its intervention only and within the limits of Client's instructions, if any. The Company's sole responsibility is to its Client and this document does not exonerate parties to a transaction from exercising all their rights and obligations under the transaction documents. This document cannot be reproduced except in full, without prior written approval of the Company. Any unauthorized alteration, forgery or falsification of the content or appearance of this document is unlawful and offenders may be prosecuted to the fullest extent of the law. Unless otherwise stated the results shown in this test report refer only to the sample(s) tested and such sample(s) are retained for 30 days only.
Attention: To check the authenticity of testing/inspection report & certificate, please contact us at telephone: (86-755) 8307 1443, or email: CN.Doccheck@sgs.com

South of No. 6 Plant, No. 1, Pansheng Road, Suzhou Industrial Park, Suzhou Area, China (Jiangsu) Pilot Free Trade Zone 215000
中国·苏州·中国(江苏)自由贸易试验区苏州片区苏州工业园区海胜路1号的6号厂房南座 邮编: 215000

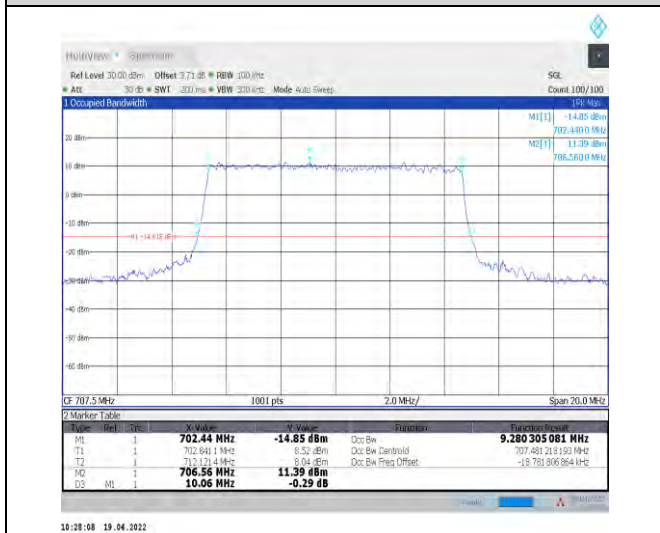
t (86-512) 62992980 www.sgs.com.cn
t (86-512) 62992980 sgs.china@sgs.com



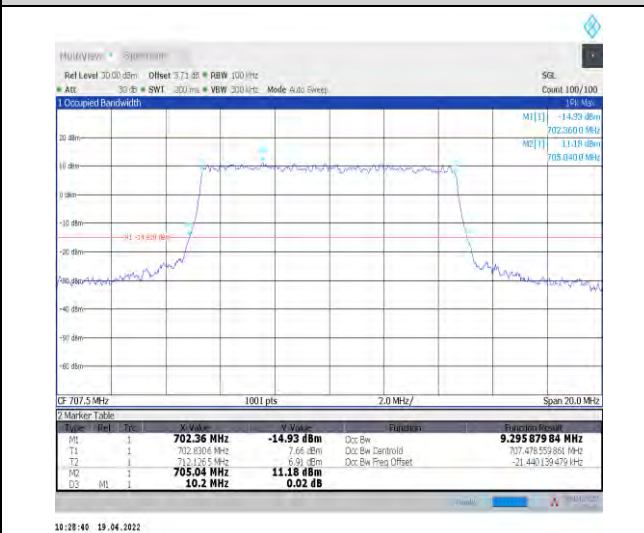
1-N12--15-10-M-5-DFT-256QAM-Outer_Full-50@0-A
 nt1-8.933-9.620-≤10-PASS



1-N12--15-10-M-6-CP-QPSK-Outer_Full-52@0-Ant1
 -9.3-10.300-≤10-PASS

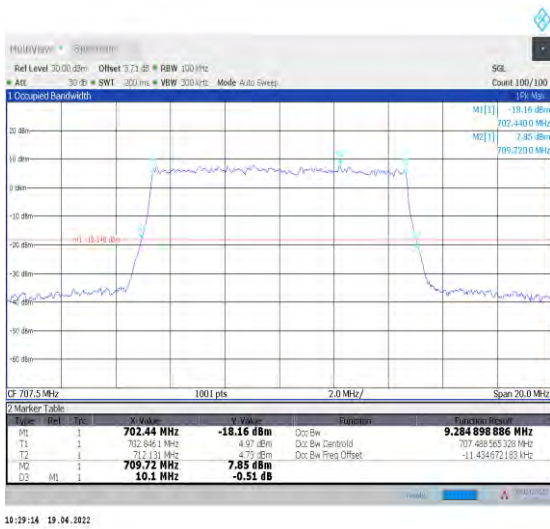


1-N12--15-10-M-7-CP-16QAM-Outer_Full-52@0-Ant
 1-9.28-10.060-≤10-PASS

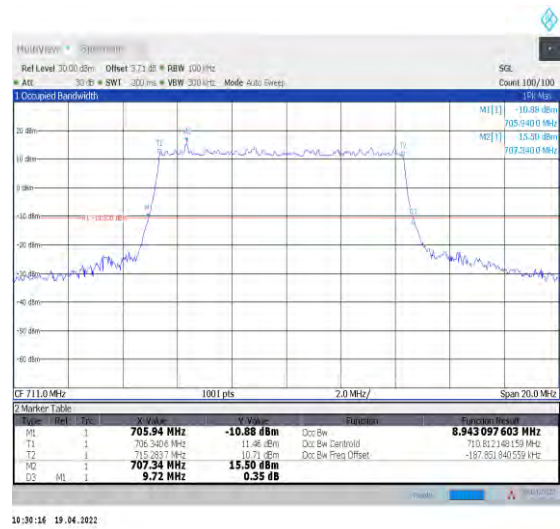


1-N12--15-10-M-8-CP-64QAM-Outer_Full-52@0-Ant
 1-9.296-10.200-≤10-PASS

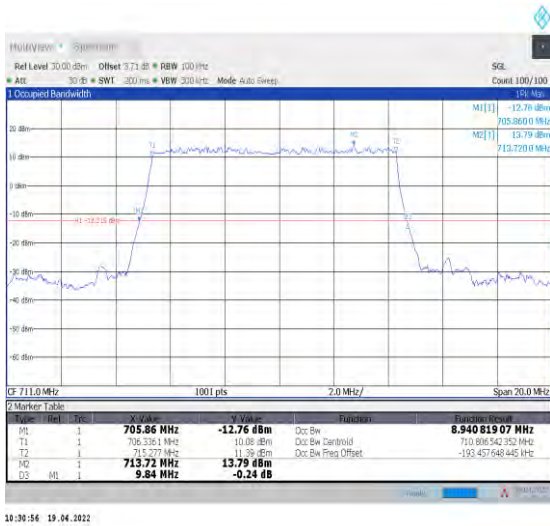




1-N12--15-10-M-9-CP-256QAM-Outer_Full-52@0-An
t1-9.285-10.100-≤10-PASS



1-N12--15-10-H-1-DFT-QPSK-Outer_Full-50@0-Ant
1-8.943-9.720-≤10-PASS



1-N12--15-10-H-2-DFT-PI2BPSK-Outer_Full-50@0-Ant
Ant1-8.941-9.840-≤10-PASS



1-N12--15-10-H-3-DFT-16QAM-Outer_Full-50@0-An
t1-8.948-9.620-≤10-PASS

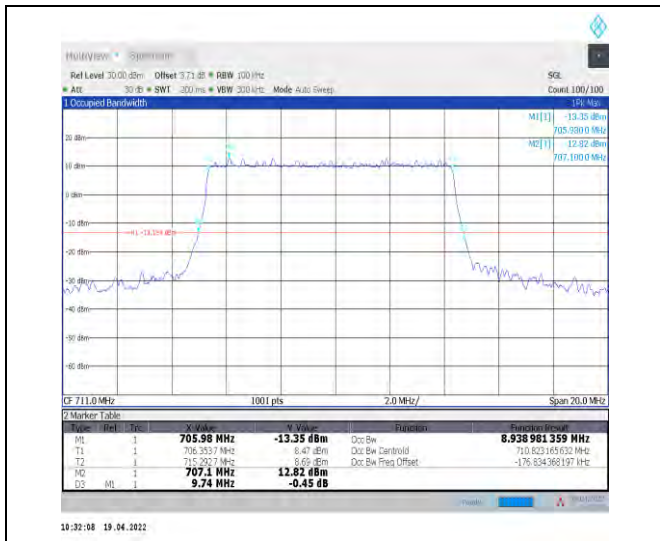


Unless otherwise agreed in writing, this document is issued by the Company subject to its General Conditions of Service printed overleaf, available on request or accessible at <http://www.sgs.com/en/Terms-and-Conditions.aspx> and, for electronic format documents, subject to Terms and Conditions for Electronic Documents at <http://www.sgs.com/en/Terms-and-Conditions/Terms-e-Documents.aspx>. Attention is drawn to the limitation of liability, indemnification and jurisdiction issues defined therein. Any holder of this document is advised that information contained hereon reflects the Company's findings at the time of its intervention only and within the limits of Client's instructions, if any. The Company's sole responsibility is to its Client and this document does not exonerate parties to a transaction from exercising all their rights and obligations under the transaction documents. This document cannot be reproduced except in full, without prior written approval of the Company. Any unauthorized alteration, forgery or falsification of the content or appearance of this document is unlawful and offenders may be prosecuted to the fullest extent of the law. Unless otherwise stated the results shown in this test report refer only to the sample(s) tested and such sample(s) are retained for 30 days only.

Attention: To check the authenticity of testing/inspection report & certificate, please contact us at telephone: (86-755) 8307 1443, or email: CN.Doccheck@sgs.com

South of No. 6 Plant, No. 1, Pansheng Road, Suzhou Industrial Park, Suzhou Area, China (Jiangsu) Pilot Free Trade Zone 215000
中国·苏州·中国(江苏)自由贸易试验区苏州片区苏州工业园区海胜路1号的6号厂房南座 邮编: 215000

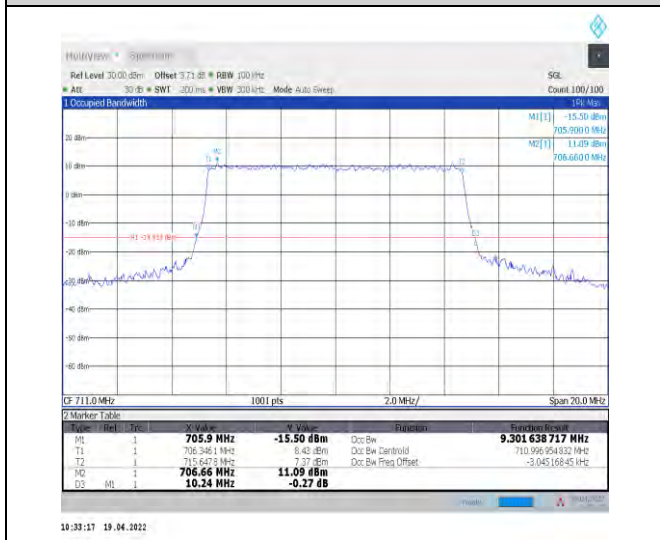
t (86-512) 62992980 www.sgs.com.cn
t (86-512) 62992980 sgs.china@sgs.com



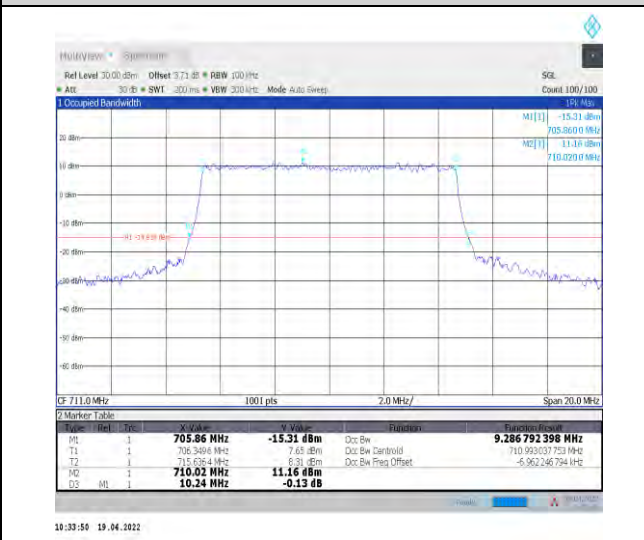
1-N12--15-10-H-4-DFT-64QAM-Outer_Full-50@0-An
 t1-8.939-9.740-<=10-PASS



1-N12--15-10-H-5-DFT-256QAM-Outer_Full-50@0-A
 nt1-8.939-9.680-<=10-PASS

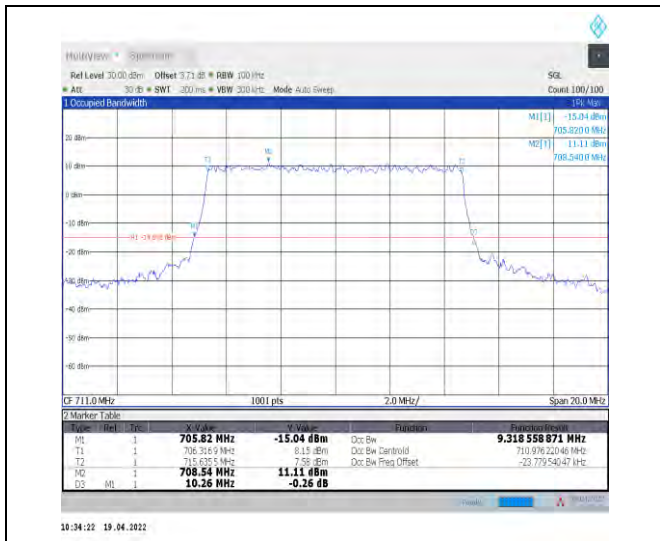


1-N12--15-10-H-6-CP-QPSK-Outer_Full-52@0-Ant1-
 9.302-10.240-<=10-PASS



1-N12--15-10-H-7-CP-16QAM-Outer_Full-52@0-Ant
 1-9.287-10.240-<=10-PASS

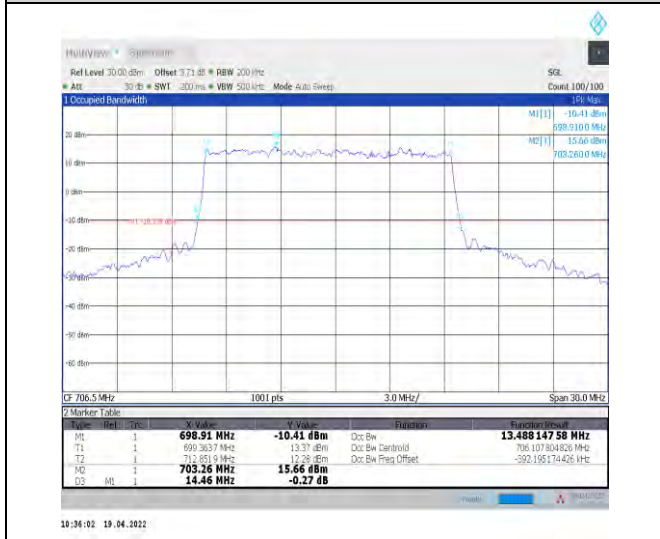




1-N12--15-10-H-8-CP-64QAM-Outer_Full-52@0-Ant
 1-9.319-10.260-≤10-PASS



1-N12--15-10-H-9-CP-256QAM-Outer_Full-52@0-An
 t1-9.305-10.200-≤10-PASS

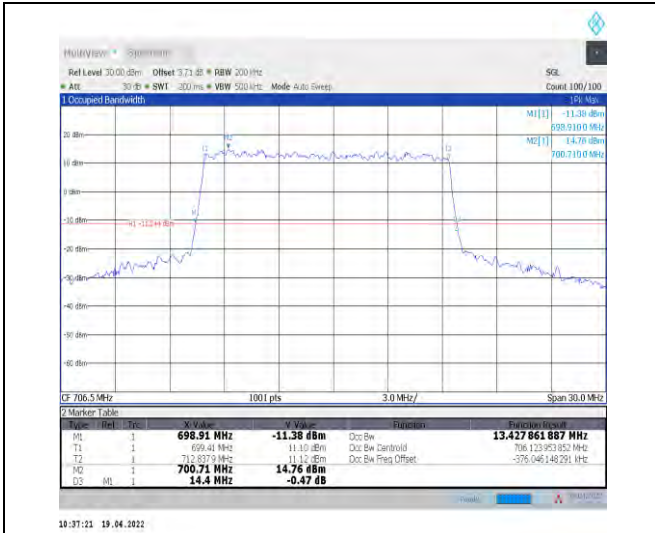


1-N12--15-15-L-1-DFT-QPSK-Outer_Full-75@0-Ant1
 -13.488-14.460-≤15-PASS



1-N12--15-15-L-2-DFT-PI2BPSK-Outer_Full-75@0-A
 nt1-13.401-14.340-≤15-PASS





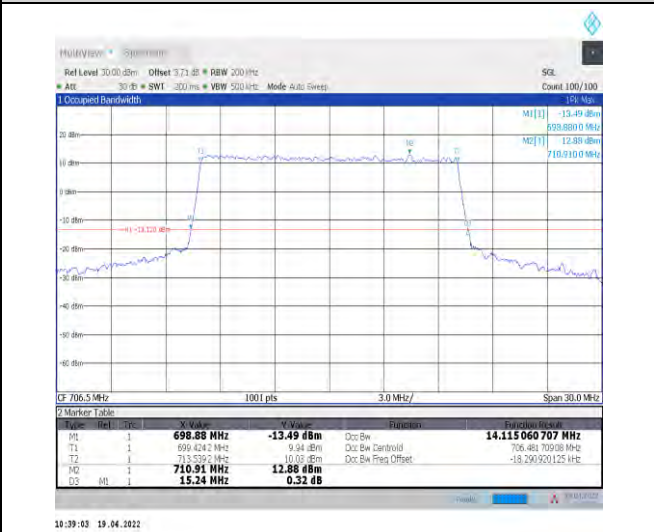
1-N12--15-15-L-3-DFT-16QAM-Outer_Full-75@0-Ant
1-13.428-14.400-≤15-PASS



1-N12--15-15-L-4-DFT-64QAM-Outer_Full-75@0-Ant
t1-13.411-14.490-≤15-PASS



1-N12--15-15-L-5-DFT-256QAM-Outer_Full-75@0-A
nt1-13.416-14.490-≤15-PASS



1-N12--15-15-L-6-CP-QPSK-Outer_Full-79@0-Ant1
14.115-15.240-≤15-PASS



Unless otherwise agreed in writing, this document is issued by the Company subject to its General Conditions of Service printed overleaf, available on request or accessible at <http://www.sgs.com/en/Terms-and-Conditions.aspx> and, for electronic format documents, subject to Terms and Conditions for Electronic Documents at <http://www.sgs.com/en/Terms-and-Conditions/Terms-e-Documents.aspx>. Attention is drawn to the limitation of liability, indemnification and jurisdiction issues defined therein. Any holder of this document is advised that information contained hereon reflects the Company's findings at the time of its intervention only and within the limits of Client's instructions, if any. The Company's sole responsibility is to its Client and this document does not exonerate parties to a transaction from exercising all their rights and obligations under the transaction documents. This document cannot be reproduced except in full, without prior written approval of the Company. Any unauthorized alteration, forgery or falsification of the content or appearance of this document is unlawful and offenders may be prosecuted to the fullest extent of the law. Unless otherwise stated the results shown in this test report refer only to the sample(s) tested and such sample(s) are retained for 30 days only.

Attention: To check the authenticity of testing/inspection report & certificate, please contact us at telephone: (86-755) 8307 1443, or email: CN.Doccheck@sgs.com

South of No. 6 Plant, No. 1, Pansheng Road, Suzhou Industrial Park, Suzhou Area, China (Jiangsu) Pilot Free Trade Zone 215000
中国·苏州·中国(江苏)自由贸易试验区苏州片区苏州工业园区海胜路1号的6号厂房南座 邮编: 215000

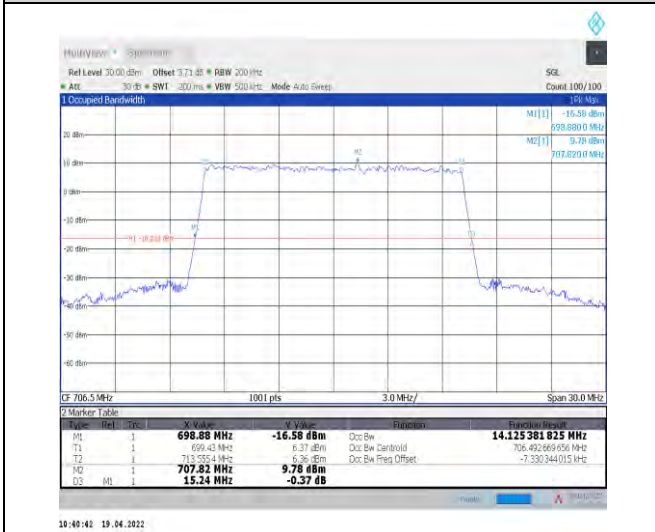
t (86-512) 62992980 www.sgs.com.cn
t (86-512) 62992980 sgs.china@sgs.com



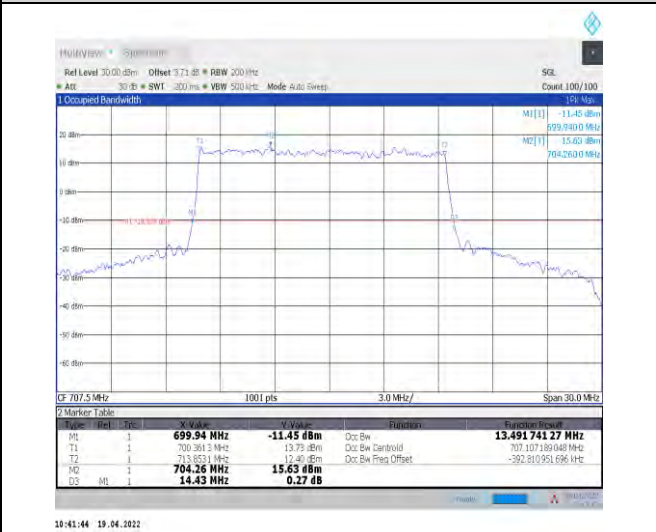
1-N12--15-15-L-7-CP-16QAM-Outer_Full-79@0-Ant1
1-14.096-15.090-≤15-PASS



1-N12--15-15-L-8-CP-64QAM-Outer_Full-79@0-Ant
1-14.135-15.180-≤15-PASS



1-N12--15-15-L-9-CP-256QAM-Outer_Full-79@0-Ant
1-14.125-15.240-≤15-PASS



1-N12--15-15-M-1-DFT-QPSK-Outer_Full-75@0-Ant
1-13.492-14.430-≤15-PASS



Unless otherwise agreed in writing, this document is issued by the Company subject to its General Conditions of Service printed overleaf, available on request or accessible at <http://www.sgs.com/en/Terms-and-Conditions.aspx> and, for electronic format documents, subject to Terms and Conditions for Electronic Documents at <http://www.sgs.com/en/Terms-and-Conditions/Terms-e-Documents.aspx>. Attention is drawn to the limitation of liability, indemnification and jurisdiction issues defined therein. Any holder of this document is advised that information contained hereon reflects the Company's findings at the time of its intervention only and within the limits of Client's instructions, if any. The Company's sole responsibility is to its Client and this document does not exonerate parties to a transaction from exercising all their rights and obligations under the transaction documents. This document cannot be reproduced except in full, without prior written approval of the Company. Any unauthorized alteration, forgery or falsification of the content or appearance of this document is unlawful and offenders may be prosecuted to the fullest extent of the law. Unless otherwise stated the results shown in this test report refer only to the sample(s) tested and such sample(s) are retained for 30 days only.
Attention: To check the authenticity of testing/inspection report & certificate, please contact us at telephone: (86-755) 8307 1443, or email: CN.Doccheck@sgs.com

South of No. 6 Plant, No. 1, Pansheng Road, Suzhou Industrial Park, Suzhou Area, China (Jiangsu) Pilot Free Trade Zone 215000
中国·苏州·中国(江苏)自由贸易试验区苏州片区苏州工业园区海胜路1号的6号厂房南楼 邮编: 215000

t (86-512) 62992980 www.sgs.com.cn
t (86-512) 62992980 sgs.china@sgs.com



1-N12--15-15-M-2-DFT-PI2BPSK-Outer_Full-75@0-Ant1-13.433-14.370-≤15-PASS

1-N12--15-15-M-3-DFT-16QAM-Outer_Full-75@0-Ant1-13.438-14.490-≤15-PASS



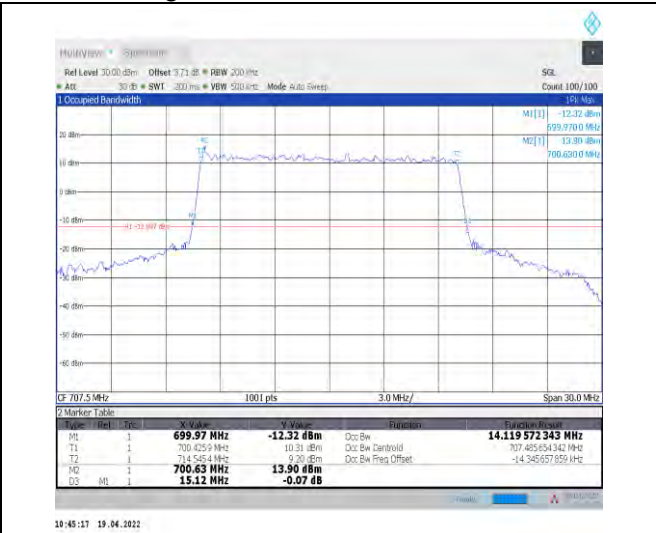
1-N12--15-15-M-4-DFT-64QAM-Outer_Full-75@0-Ant1-13.424-14.550-≤15-PASS

1-N12--15-15-M-5-DFT-256QAM-Outer_Full-75@0-Ant1-13.425-14.430-≤15-PASS

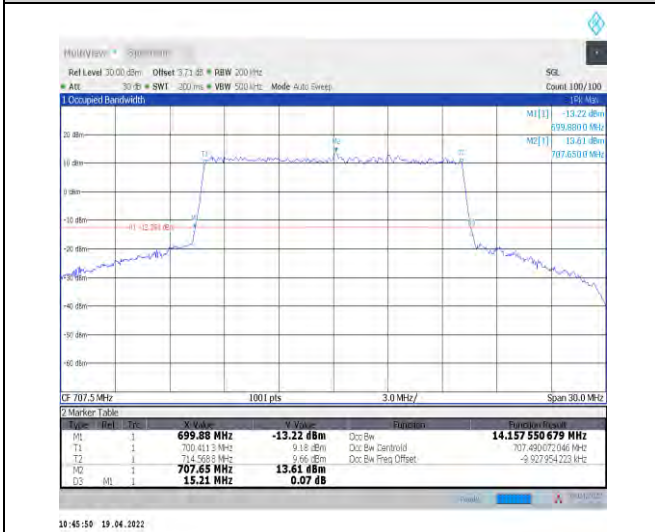




1-N12--15-15-M-6-CP-QPSK-Outer_Full-79@0-Ant-14.134-15.300-≤15-PASS



1-N12--15-15-M-7-CP-16QAM-Outer_Full-79@0-Ant-1-14.12-15.120-≤15-PASS



1-N12--15-15-M-8-CP-64QAM-Outer_Full-79@0-Ant-1-14.158-15.210-≤15-PASS



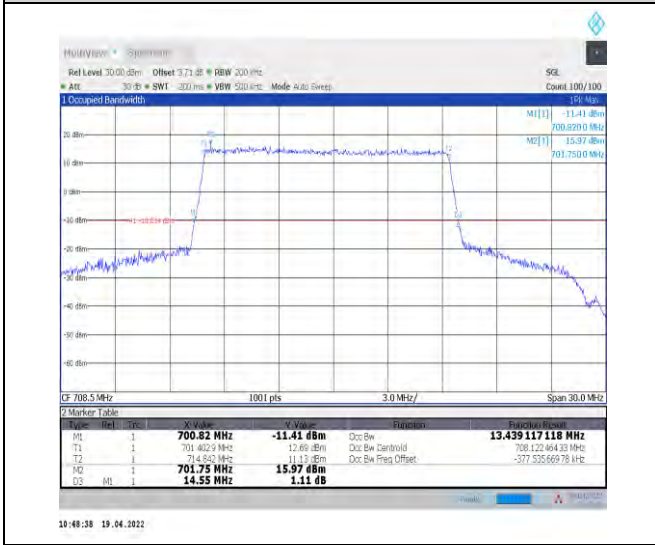
1-N12--15-15-M-9-CP-256QAM-Outer_Full-79@0-Ant-1-14.147-15.270-≤15-PASS





1-N12--15-15-H-1-DFT-QPSK-Outer_Full-75@0-Ant
1-13.5-14.460-≤ 15-PASS

1-N12--15-15-H-2-DFT-PI2BPSK-Outer_Full-75@0-Ant1-13.425-14.340-≤ 15-PASS



1-N12--15-15-H-3-DFT-16QAM-Outer_Full-75@0-An
t1-13.439-14.550-≤ 15-PASS

1-N12--15-15-H-4-DFT-64QAM-Outer_Full-75@0-An
t1-13.416-14.490-≤ 15-PASS





1-N12--15-15-H-5-DFT-256QAM-Outer_Full-75@0-A
nt1-13.45-14.610-≤15-PASS



1-N12--15-15-H-6-CP-QPSK-Outer_Full-79@0-Ant1-
14.124-15.270-≤15-PASS



1-N12--15-15-H-7-CP-16QAM-Outer_Full-79@0-Ant
1-14.124-15.240-≤15-PASS



1-N12--15-15-H-8-CP-64QAM-Outer_Full-79@0-Ant
1-14.143-15.090-≤15-PASS



Unless otherwise agreed in writing, this document is issued by the Company subject to its General Conditions of Service printed overleaf, available on request or accessible at <http://www.sgs.com/en/Terms-and-Conditions.aspx> and, for electronic format documents, subject to Terms and Conditions for Electronic Documents at <http://www.sgs.com/en/Terms-and-Conditions/Terms-e-Documents.aspx>. Attention is drawn to the limitation of liability, indemnification and jurisdiction issues defined therein. Any holder of this document is advised that information contained hereon reflects the Company's findings at the time of its intervention only and within the limits of Client's instructions, if any. The Company's sole responsibility is to its Client and this document does not exonerate parties to a transaction from exercising all their rights and obligations under the transaction documents. This document cannot be reproduced except in full, without prior written approval of the Company. Any unauthorized alteration, forgery or falsification of the content or appearance of this document is unlawful and offenders may be prosecuted to the fullest extent of the law. Unless otherwise stated the results shown in this test report refer only to the sample(s) tested and such sample(s) are retained for 30 days only.

Attention: To check the authenticity of testing/inspection report & certificate, please contact us at telephone: (86-755) 8307 1443, or email: CN.Doccheck@sgs.com

South of No. 6 Plant, No. 1, Pulinsheng Road, Suzhou Industrial Park, Suzhou Area, China (Jiangsu) Pilot Free Trade Zone 215000 t (86-512) 62992980 www.sgs.com.cn
中国·苏州·中国(江苏)自由贸易试验区苏州片区苏州工业园区海陵路1号的6号厂房南楼 邮编: 215000 t (86-512) 62992980 sgs.china@sgs.com



1-N12--15-15-H-9-CP-256QAM-Outer_Full-79@0-An
t1-14.145-15.270-≤15-PASS



Unless otherwise agreed in writing, this document is issued by the Company subject to its General Conditions of Service printed overleaf, available on request or accessible at <http://www.sgs.com/en/Terms-and-Conditions.aspx> and, for electronic format documents, subject to Terms and Conditions for Electronic Documents at <http://www.sgs.com/en/Terms-and-Conditions/Terms-e-Documents.aspx>. Attention is drawn to the limitation of liability, indemnification and jurisdiction issues defined therein. Any holder of this document is advised that information contained hereon reflects the Company's findings at the time of its intervention only and within the limits of Client's instructions, if any. The Company's sole responsibility is to its Client and this document does not exonerate parties to a transaction from exercising all their rights and obligations under the transaction documents. This document cannot be reproduced except in full, without prior written approval of the Company. Any unauthorized alteration, forgery or falsification of the content or appearance of this document is unlawful and offenders may be prosecuted to the fullest extent of the law. Unless otherwise stated the results shown in this test report refer only to the sample(s) tested and such sample(s) are retained for 30 days only.

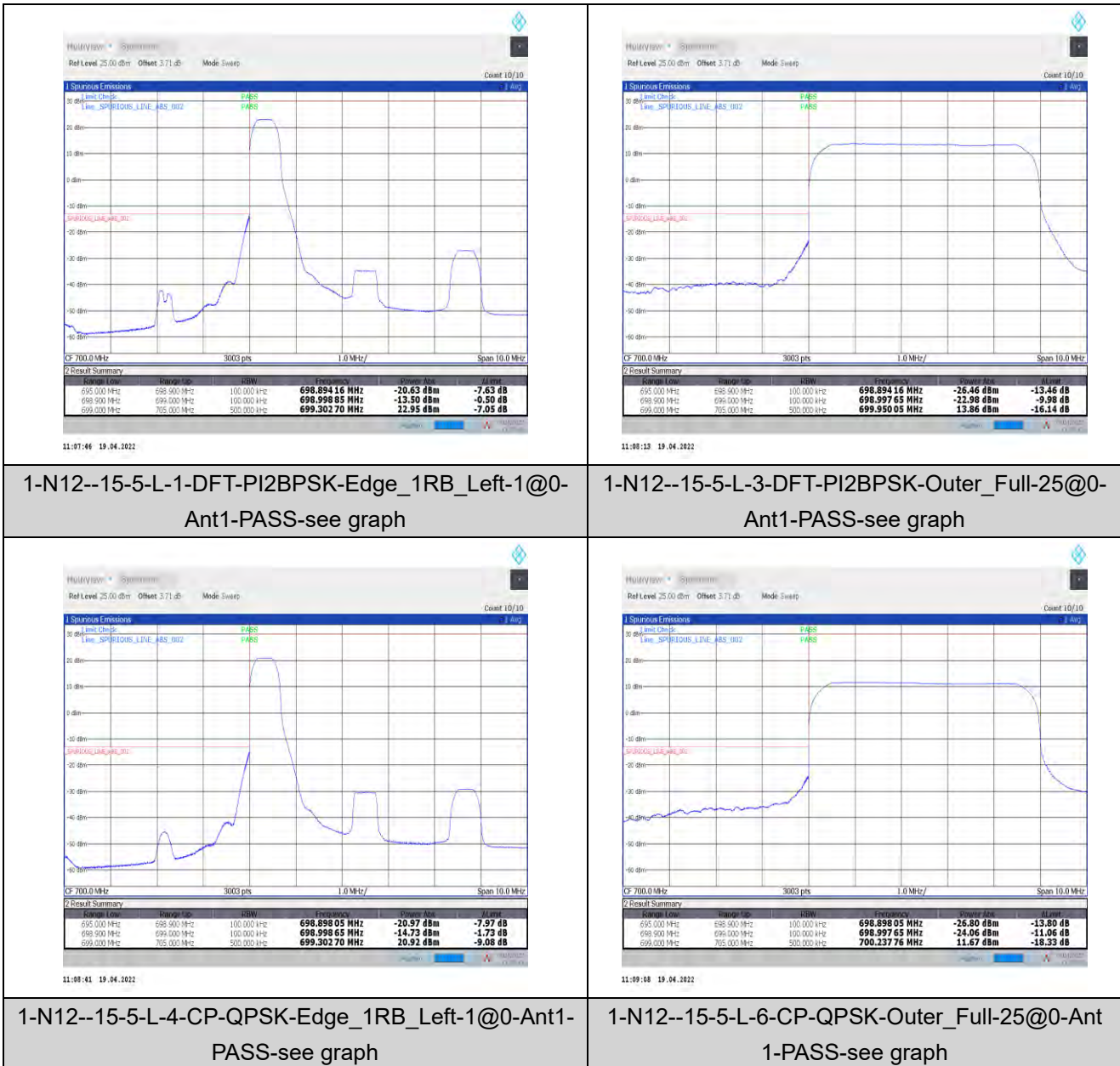
Attention: To check the authenticity of testing/inspection report & certificate, please contact us at telephone: (86-755) 8307 1443, or email: CN.Doccheck@sgs.com

South of No. 6 Plant, No. 1, Runsheng Road, Suzhou Industrial Park, Suzhou Area, China (Jiangsu) Pilot Free Trade Zone 215000
中国·苏州·中国(江苏)自由贸易试验区苏州片区苏州工业园区海胜路1号的6号厂房南楼 邮编: 215000

t (86-512) 62992980 www.sgs.com.cn
t (86-512) 62992980 sgs.china@sgs.com

Band Edge for SA

Test Graphs



1-N12--15-5-L-1-DFT-PI2BPSK-Edge_1RB_Left-1@0-Ant1-PASS-see graph

1-N12--15-5-L-3-DFT-PI2BPSK-Outer_Full-25@0-Ant1-PASS-see graph

1-N12--15-5-L-4-CP-QPSK-Edge_1RB_Left-1@0-Ant1-PASS-see graph

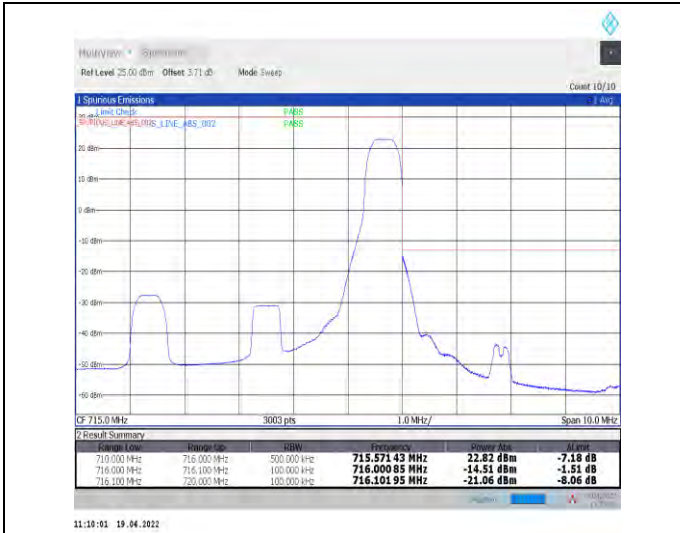
1-N12--15-5-L-6-CP-QPSK-Outer_Full-25@0-Ant1-PASS-see graph



Unless otherwise agreed in writing, this document is issued by the Company subject to its General Conditions of Service printed overleaf, available on request or accessible at <http://www.sgs.com/en/Terms-and-Conditions.aspx> and, for electronic format documents, subject to Terms and Conditions for Electronic Documents at <http://www.sgs.com/en/Terms-and-Conditions/Terms-e-Documents.aspx>. Attention is drawn to the limitation of liability, indemnification and jurisdiction issues defined therein. Any holder of this document is advised that information contained hereon reflects the Company's findings at the time of its intervention only and within the limits of Client's instructions, if any. The Company's sole responsibility is to its Client and this document does not exonerate parties to a transaction from exercising all their rights and obligations under the transaction documents. This document cannot be reproduced except in full, without prior written approval of the Company. Any unauthorized alteration, forgery or falsification of the content or appearance of this document is unlawful and offenders may be prosecuted to the fullest extent of the law. Unless otherwise stated the results shown in this test report refer only to the sample(s) tested and such sample(s) are retained for 30 days only.
Attention: To check the authenticity of testing/inspection report & certificate, please contact us at telephone: (86-755) 8307 1443, or email: CN.Doccheck@sgs.com

South of No. 6 Plant, No. 1, Pansheng Road, Suzhou Industrial Park, Suzhou Area, China (Jiangsu) Pilot Free Trade Zone 215000
 中国·苏州·中国(江苏)自由贸易试验区苏州片区苏州工业园区海胜路1号的6号厂房南楼 邮编: 215000

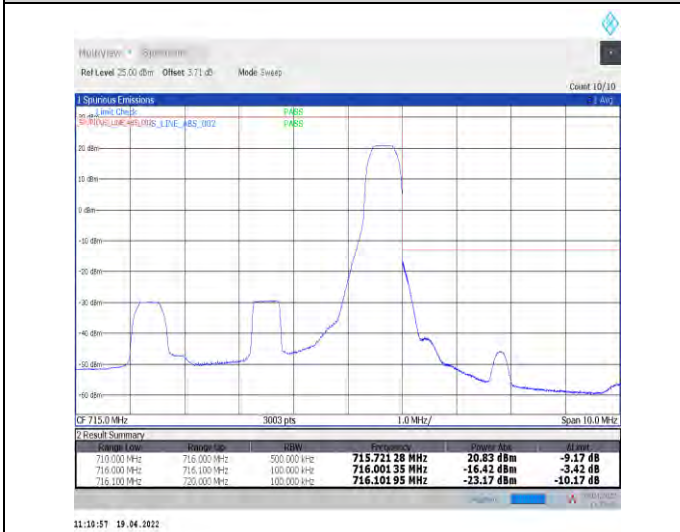
t (86-512) 62992980 www.sgs.com.cn
 t (86-512) 62992980 sgs.china@sgs.com



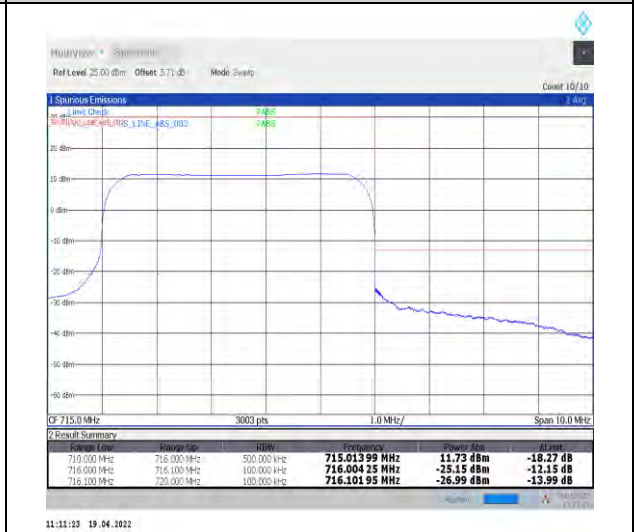
1-N12--15-5-H-2-DFT-PI2BPSK-Edge_1RB_Right-1@2
4-Ant1-PASS-see graph



1-N12--15-5-H-3-DFT-PI2BPSK-Outer_Full-25@0
-Ant1-PASS-see graph



1-N12--15-5-H-5-CP-QPSK-Edge_1RB_Right-1@24-A
nt1-PASS-see graph



1-N12--15-5-H-6-CP-QPSK-Outer_Full-25@0-Ant
1-PASS-see graph

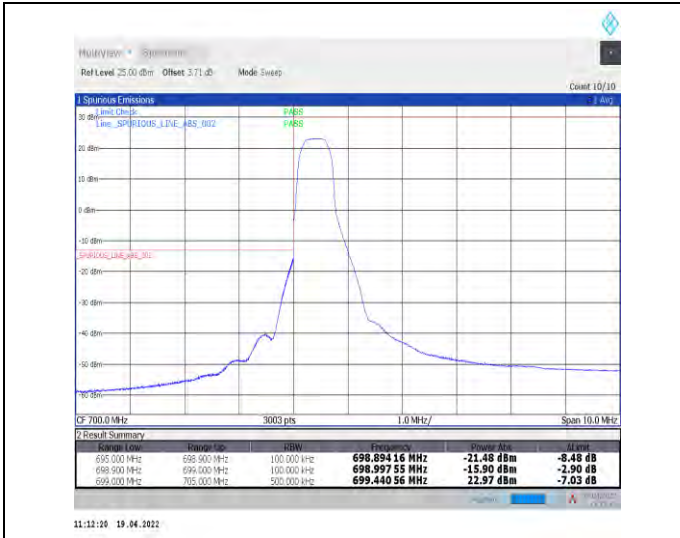


Unless otherwise agreed in writing, this document is issued by the Company subject to its General Conditions of Service printed overleaf, available on request or accessible at <http://www.sgs.com/en/Terms-and-Conditions.aspx> and, for electronic format documents, subject to Terms and Conditions for Electronic Documents at <http://www.sgs.com/en/Terms-and-Conditions/Terms-e-Documents.aspx>. Attention is drawn to the limitation of liability, indemnification and jurisdiction issues defined therein. Any holder of this document is advised that information contained hereon reflects the Company's findings at the time of its intervention only and within the limits of Client's instructions, if any. The Company's sole responsibility is to its Client and this document does not exonerate parties to a transaction from exercising all their rights and obligations under the transaction documents. This document cannot be reproduced except in full, without prior written approval of the Company. Any unauthorized alteration, forgery or falsification of the content or appearance of this document is unlawful and offenders may be prosecuted to the fullest extent of the law. Unless otherwise stated the results shown in this test report refer only to the sample(s) tested and such sample(s) are retained for 30 days only.

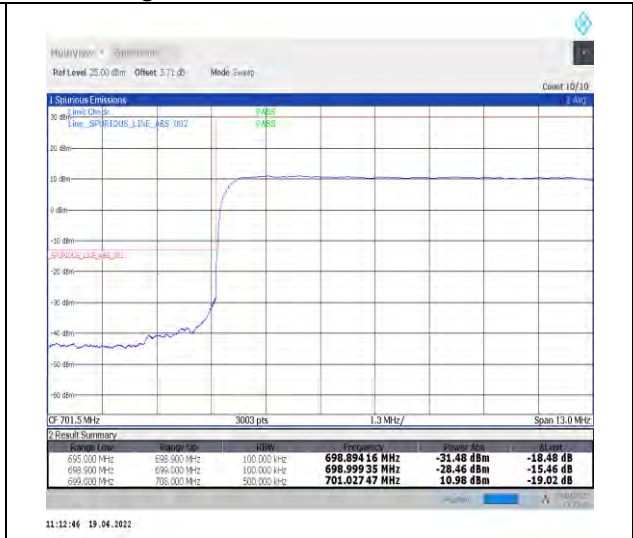
Attention: To check the authenticity of testing/inspection report & certificate, please contact us at telephone: (86-755) 8307 1443, or email: CN.Doccheck@sgs.com

South of No. 6 Plant, No. 1, Pansheng Road, Suzhou Industrial Park, Suzhou Area, China (Jiangsu) Pilot Free Trade Zone 215000
中国·苏州·中国(江苏)自由贸易试验区苏州片区苏州工业园区海胜路1号的6号厂房南楼 邮编: 215000

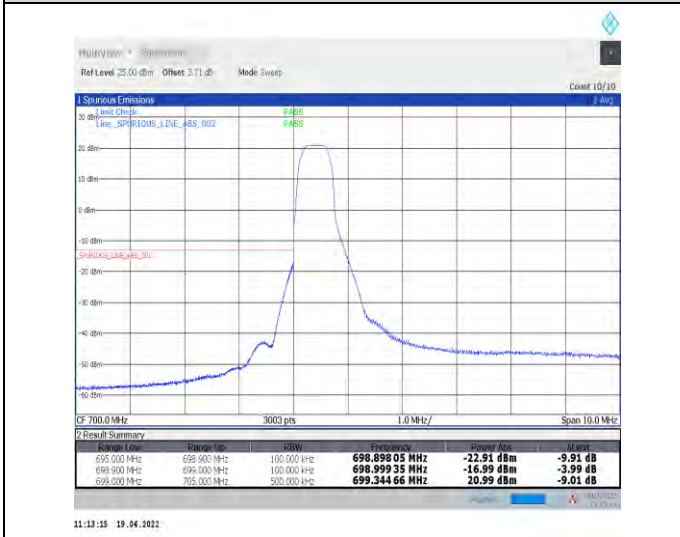
t (86-512) 62992980 www.sgs.com.cn
t (86-512) 62992980 sgs.china@sgs.com



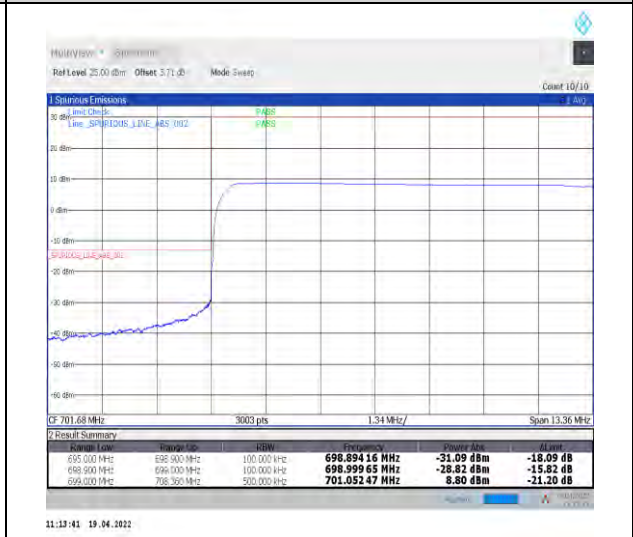
1-N12--15-10-L-1-DFT-PI2BPSK-Edge_1RB_Left-1@0-Ant1-PASS-see graph



1-N12--15-10-L-3-DFT-PI2BPSK-Outer_Full-50@0-Ant1-PASS-see graph



1-N12--15-10-L-4-CP-QPSK-Edge_1RB_Left-1@0-Ant1-PASS-see graph



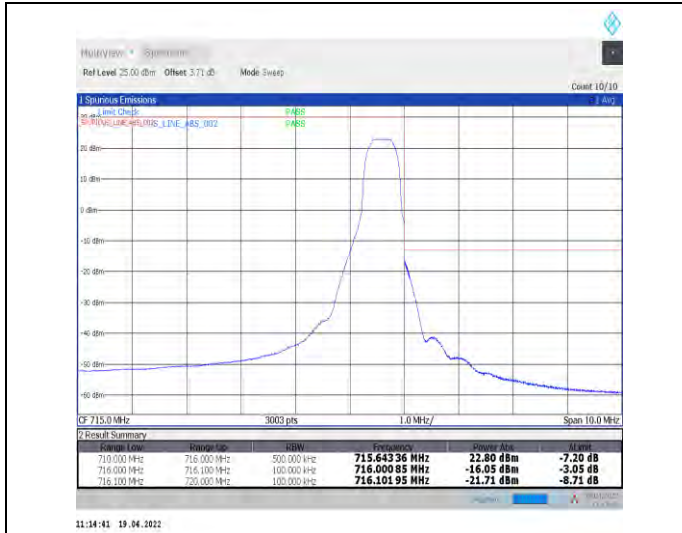
1-N12--15-10-L-6-CP-QPSK-Outer_Full-52@0-Ant1-PASS-see graph



Unless otherwise agreed in writing, this document is issued by the Company subject to its General Conditions of Service printed overleaf, available on request or accessible at <http://www.sgs.com/en/Terms-and-Conditions.aspx> and, for electronic format documents, subject to Terms and Conditions for Electronic Documents at <http://www.sgs.com/en/Terms-and-Conditions/Terms-e-Documents.aspx>. Attention is drawn to the limitation of liability, indemnification and jurisdiction issues defined therein. Any holder of this document is advised that information contained hereon reflects the Company's findings at the time of its intervention only and within the limits of Client's instructions, if any. The Company's sole responsibility is to its Client and this document does not exonerate parties to a transaction from exercising all their rights and obligations under the transaction documents. This document cannot be reproduced except in full, without prior written approval of the Company. Any unauthorized alteration, forgery or falsification of the content or appearance of this document is unlawful and offenders may be prosecuted to the fullest extent of the law. Unless otherwise stated the results shown in this test report refer only to the sample(s) tested and such sample(s) are retained for 30 days only.

Attention: To check the authenticity of testing/inspection report & certificate, please contact us at telephone: (86-755) 8307 1443, or email: CN.Doccheck@sgs.com

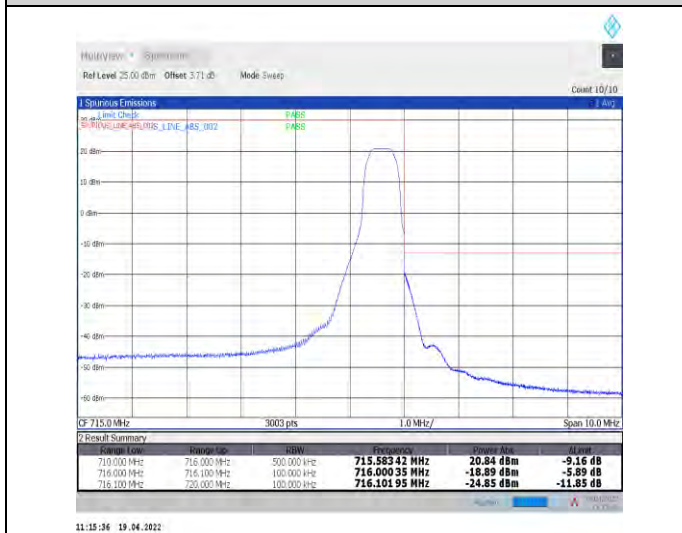
South of No. 6 Plant, No. 1, Pulinsheng Road, Suzhou Industrial Park, Suzhou Area, China (Jiangsu) Pilot Free Trade Zone 215000 t (86-512) 62992980 www.sgs.com.cn
 中国·苏州·中国(江苏)自由贸易试验区苏州片区苏州工业园区海胜路1号的6号厂房南座 邮编: 215000 t (86-512) 62992980 sgs.china@sgs.com



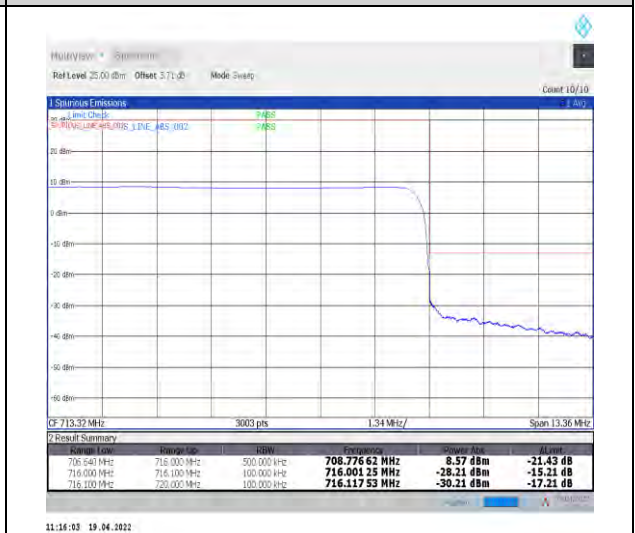
1-N12--15-10-H-2-DFT-PI2BPSK-Edge_1RB_Right-1@51-Ant1-PASS-see graph



1-N12--15-10-H-3-DFT-PI2BPSK-Outer_Full-50@0-Ant1-PASS-see graph



1-N12--15-10-H-5-CP-QPSK-Edge_1RB_Right-1@51-Ant1-PASS-see graph



1-N12--15-10-H-6-CP-QPSK-Outer_Full-52@0-Ant1-PASS-see graph

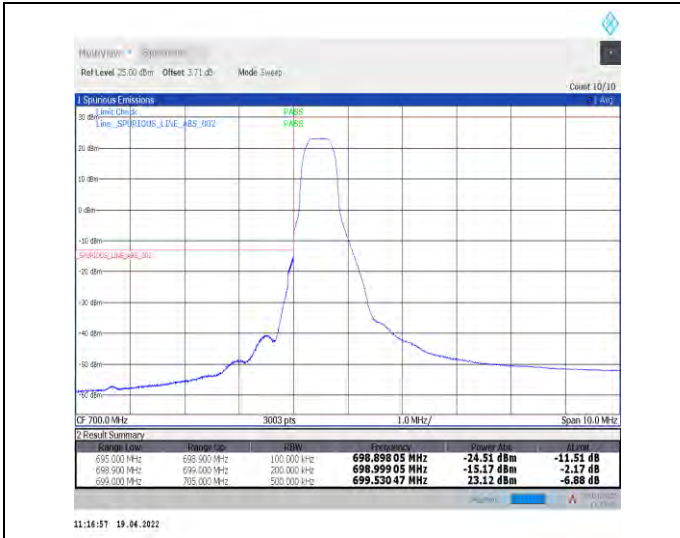


Unless otherwise agreed in writing, this document is issued by the Company subject to its General Conditions of Service printed overleaf, available on request or accessible at <http://www.sgs.com/en/Terms-and-Conditions.aspx> and, for electronic format documents, subject to Terms and Conditions for Electronic Documents at <http://www.sgs.com/en/Terms-and-Conditions/Terms-e-Documents.aspx>. Attention is drawn to the limitation of liability, indemnification and jurisdiction issues defined therein. Any holder of this document is advised that information contained hereon reflects the Company's findings at the time of its intervention only and within the limits of Client's instructions, if any. The Company's sole responsibility is to its Client and this document does not exonerate parties to a transaction from exercising all their rights and obligations under the transaction documents. This document cannot be reproduced except in full, without prior written approval of the Company. Any unauthorized alteration, forgery or falsification of the content or appearance of this document is unlawful and offenders may be prosecuted to the fullest extent of the law. Unless otherwise stated the results shown in this test report refer only to the sample(s) tested and such sample(s) are retained for 30 days only.

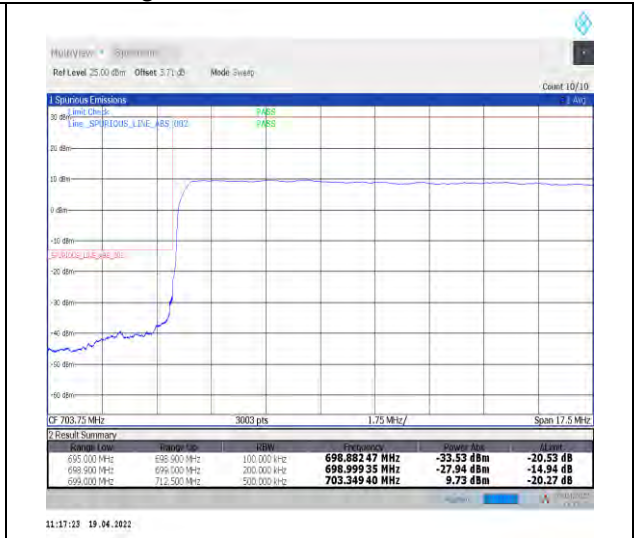
Attention: To check the authenticity of testing/inspection report & certificate, please contact us at telephone: (86-755) 8307 1443, or email: CN.Doccheck@sgs.com

South of No. 6 Plant, No. 1, Pansheng Road, Suzhou Industrial Park, Suzhou Area, China (Jiangsu) Pilot Free Trade Zone 215000
 中国·苏州·中国(江苏)自由贸易试验区苏州片区苏州工业园区海胜路1号的6号厂房南楼 邮编: 215000

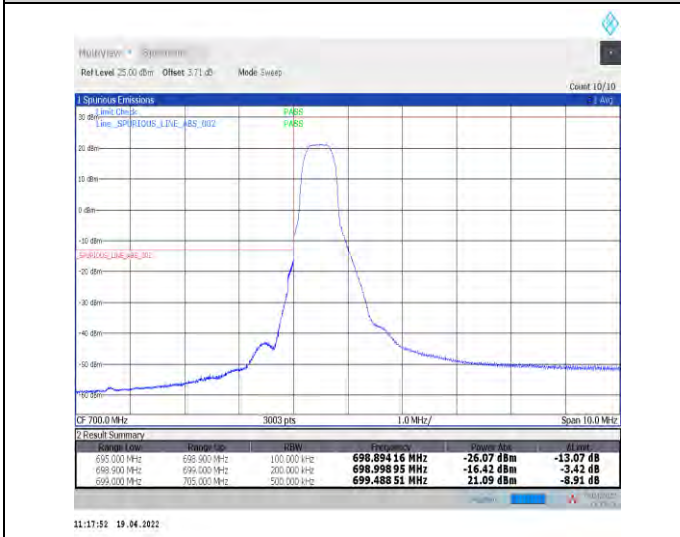
t (86-512) 62992980 www.sgs.com.cn
 t (86-512) 62992980 sgs.china@sgs.com



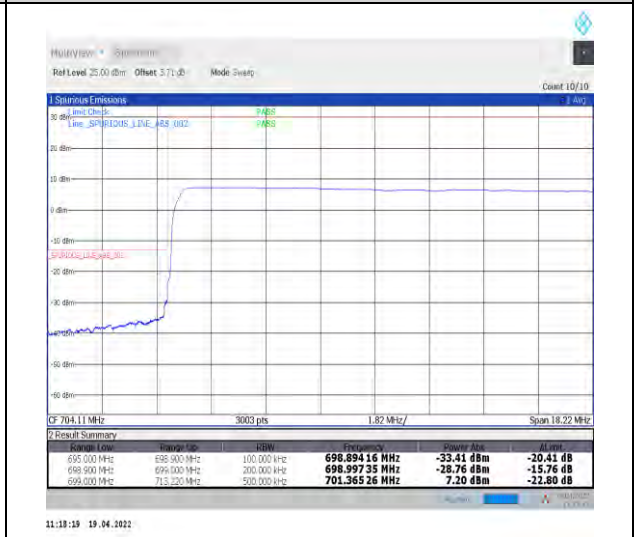
1-N12--15-15-L-1-DFT-PI2BPSK-Edge_1RB_Left-1@0-Ant1-PASS-see graph



1-N12--15-15-L-3-DFT-PI2BPSK-Outer_Full-75@0-Ant1-PASS-see graph



1-N12--15-15-L-4-CP-QPSK-Edge_1RB_Left-1@0-Ant1-PASS-see graph



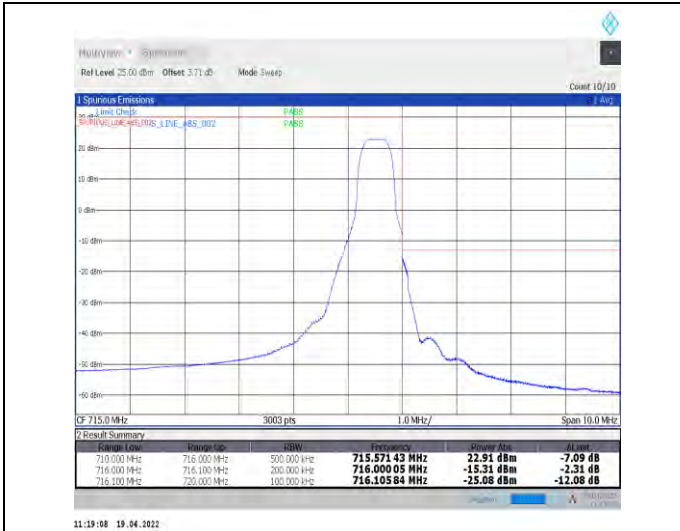
1-N12--15-15-L-6-CP-QPSK-Outer_Full-79@0-Ant1-PASS-see graph



Unless otherwise agreed in writing, this document is issued by the Company subject to its General Conditions of Service printed overleaf, available on request or accessible at <http://www.sgs.com/en/Terms-and-Conditions.aspx> and, for electronic format documents, subject to Terms and Conditions for Electronic Documents at <http://www.sgs.com/en/Terms-and-Conditions/Terms-e-Documents.aspx>. Attention is drawn to the limitation of liability, indemnification and jurisdiction issues defined therein. Any holder of this document is advised that information contained hereon reflects the Company's findings at the time of its intervention only and within the limits of Client's instructions, if any. The Company's sole responsibility is to its Client and this document does not exonerate parties to a transaction from exercising all their rights and obligations under the transaction documents. This document cannot be reproduced except in full, without prior written approval of the Company. Any unauthorized alteration, forgery or falsification of the content or appearance of this document is unlawful and offenders may be prosecuted to the fullest extent of the law. Unless otherwise stated the results shown in this test report refer only to the sample(s) tested and such sample(s) are retained for 30 days only.

Attention: To check the authenticity of testing/inspection report & certificate, please contact us at telephone: (86-755) 8307 1443, or email: CN.Doccheck@sgs.com

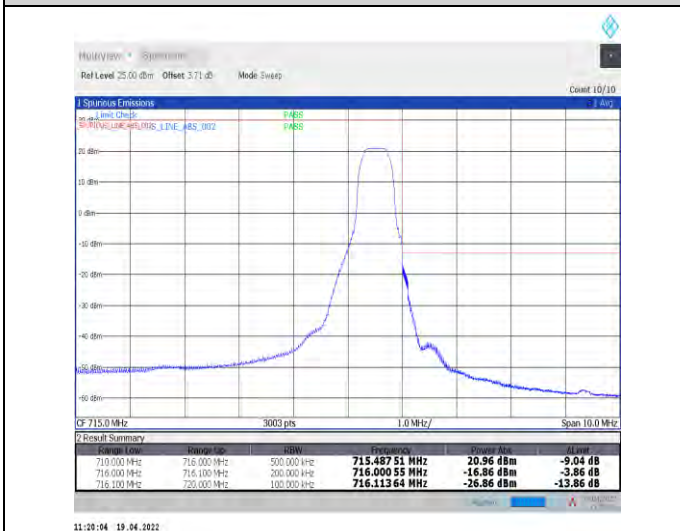
South of No. 6 Plant, No. 1, Pansheng Road, Suzhou Industrial Park, Suzhou Area, China (Jiangsu) Pilot Free Trade Zone 215000 t (86-512) 62992980 www.sgs.com.cn
 中国·苏州·中国(江苏)自由贸易试验区苏州片区苏州工业园区海胜路1号的6号厂房南楼 邮编: 215000 t (86-512) 62992980 sgs.china@sgs.com



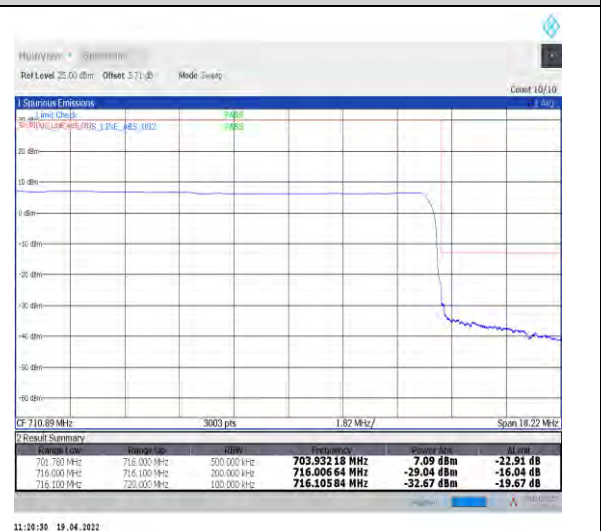
1-N12--15-15-H-2-DFT-PI2BPSK-Edge_1RB_Right-1@78-Ant1-PASS-see graph



1-N12--15-15-H-3-DFT-PI2BPSK-Outer_Full-75@0-Ant1-PASS-see graph



1-N12--15-15-H-5-CP-QPSK-Edge_1RB_Right-1@78-Ant1-PASS-see graph



1-N12--15-15-H-6-CP-QPSK-Outer_Full-79@0-Ant1-PASS-see graph



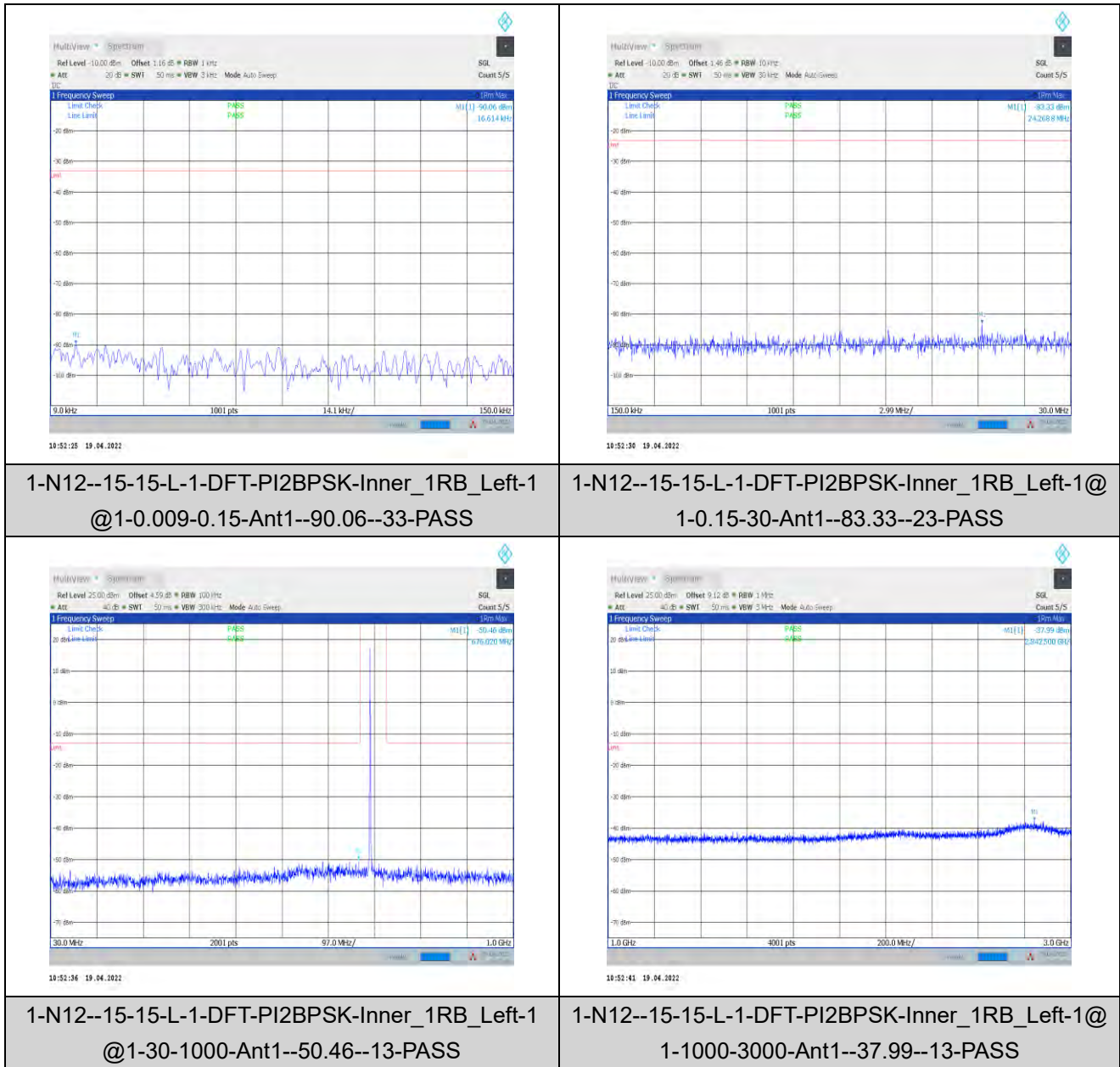
Unless otherwise agreed in writing, this document is issued by the Company subject to its General Conditions of Service printed overleaf, available on request or accessible at <http://www.sgs.com/en/Terms-and-Conditions.aspx> and, for electronic format documents, subject to Terms and Conditions for Electronic Documents at <http://www.sgs.com/en/Terms-and-Conditions/Terms-e-Documents.aspx>. Attention is drawn to the limitation of liability, indemnification and jurisdiction issues defined therein. Any holder of this document is advised that information contained hereon reflects the Company's findings at the time of its intervention only and within the limits of Client's instructions, if any. The Company's sole responsibility is to its Client and this document does not exonerate parties to a transaction from exercising all their rights and obligations under the transaction documents. This document cannot be reproduced except in full, without prior written approval of the Company. Any unauthorized alteration, forgery or falsification of the content or appearance of this document is unlawful and offenders may be prosecuted to the fullest extent of the law. Unless otherwise stated the results shown in this test report refer only to the sample(s) tested and such sample(s) are retained for 30 days only.

Attention: To check the authenticity of testing/inspection report & certificate, please contact us at telephone: (86-755) 8307 1443, or email: CN.Doccheck@sgs.com

South of No. 6 Plant, No. 1, Pansheng Road, Suzhou Industrial Park, Suzhou Area, China (Jiangsu) Pilot Free Trade Zone 215000 t (86-512) 62992980 www.sgs.com.cn
 中国·苏州·中国(江苏)自由贸易试验区苏州片区苏州工业园区海胜路1号的6号厂房南楼 邮编: 215000 t (86-512) 62992980 sgs.china@sgs.com

Conducted Spurious Emission for SA

Test Graphs

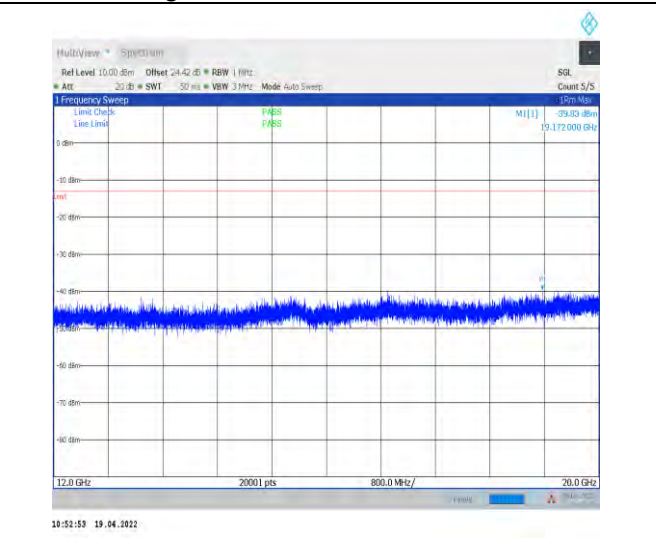
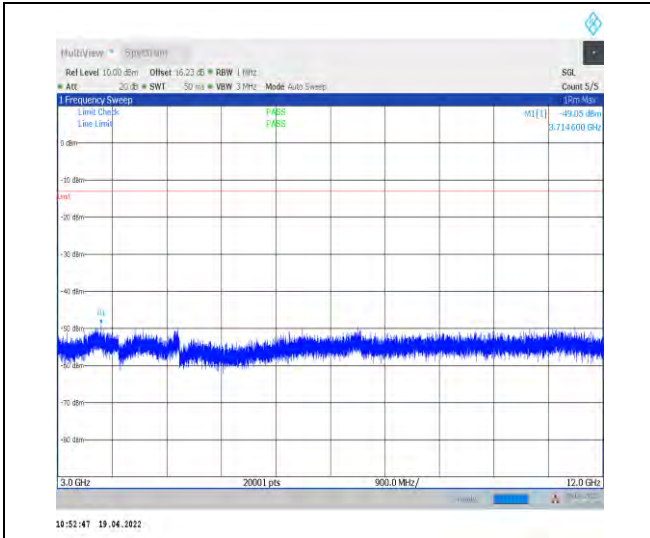


Unless otherwise agreed in writing, this document is issued by the Company subject to its General Conditions of Service printed overleaf, available on request or accessible at <http://www.sgs.com/en/Terms-and-Conditions.aspx> and, for electronic format documents, subject to Terms and Conditions for Electronic Documents at <http://www.sgs.com/en/Terms-and-Conditions/Terms-e-Documents.aspx>. Attention is drawn to the limitation of liability, indemnification and jurisdiction issues defined therein. Any holder of this document is advised that information contained hereon reflects the Company's findings at the time of its intervention only and within the limits of Client's instructions, if any. The Company's sole responsibility is to its Client and this document does not exonerate parties to a transaction from exercising all their rights and obligations under the transaction documents. This document cannot be reproduced except in full, without prior written approval of the Company. Any unauthorized alteration, forgery or falsification of the content or appearance of this document is unlawful and offenders may be prosecuted to the fullest extent of the law. Unless otherwise stated the results shown in this test report refer only to the sample(s) tested and such sample(s) are retained for 30 days only.

Attention: To check the authenticity of testing/inspection report & certificate, please contact us at telephone: (86-755) 8307 1443, or email: CN.Doccheck@sgs.com

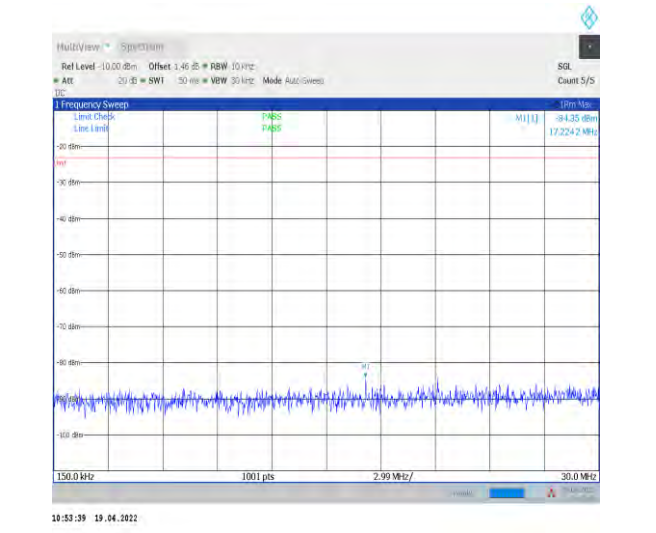
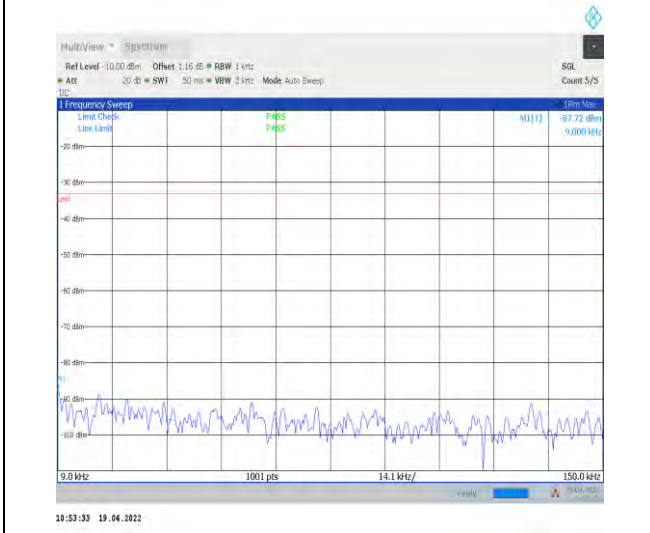
South of No. 6 Plant, No. 1, Pansheng Road, Suzhou Industrial Park, Suzhou Area, China (Jiangsu) Pilot Free Trade Zone 215000
 中国·苏州·中国(江苏)自由贸易试验区苏州片区苏州工业园区海胜路1号的6号厂房南座 邮编: 215000

t (86-512) 62992980 www.sgs.com.cn
 t (86-512) 62992980 sgs.china@sgs.com



1-N12--15-15-L-1-DFT-PI2BPSK-Inner_1RB_Left-1
@1-3000-12000-Ant1--49.05--13-PASS

1-N12--15-15-L-1-DFT-PI2BPSK-Inner_1RB_Left-1@
1-12000-20000-Ant1--39.83--13-PASS



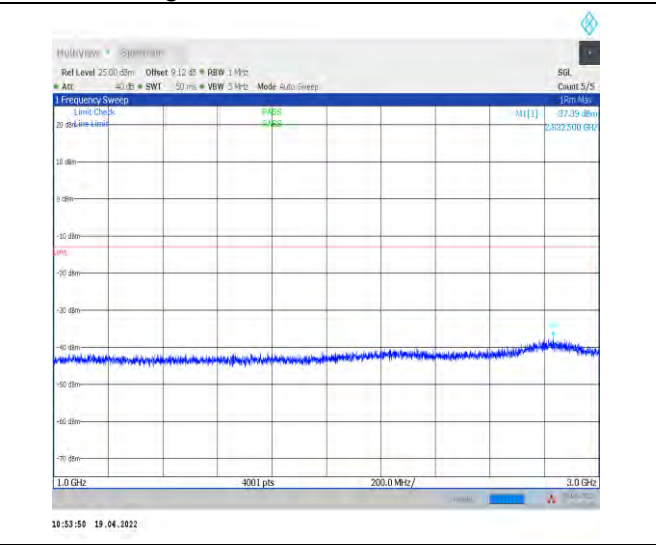
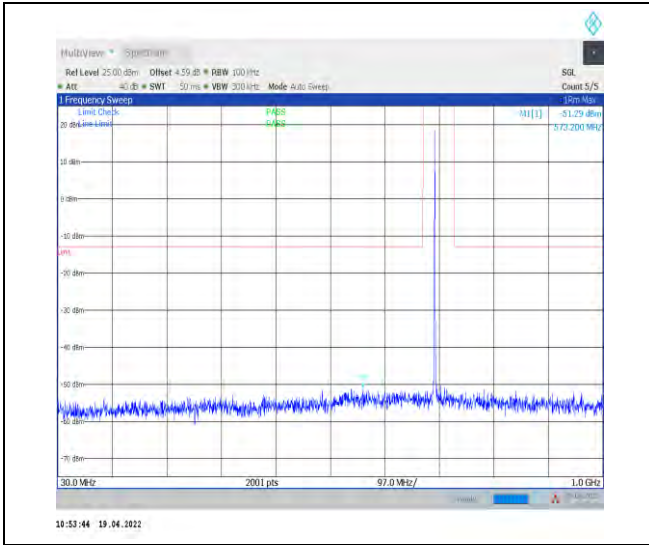
1-N12--15-15-M-1-DFT-PI2BPSK-Inner_1RB_Left-1
@1-0.009-0.15-Ant1--87.72--33-PASS

1-N12--15-15-M-1-DFT-PI2BPSK-Inner_1RB_Left-1
@1-0.15-30-Ant1--84.35--23-PASS



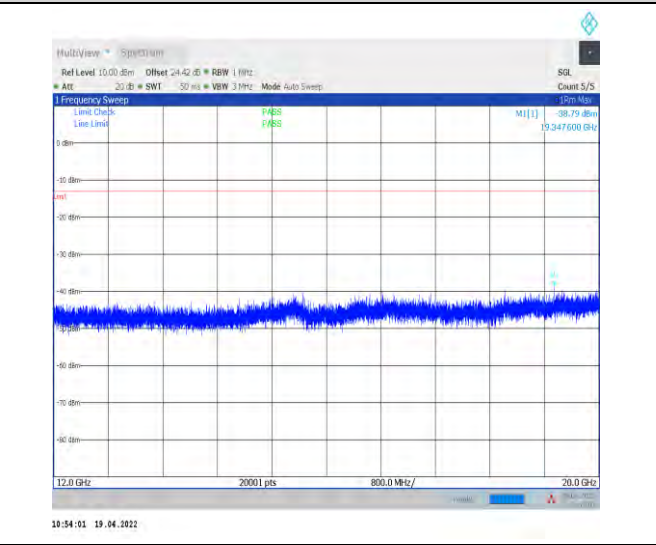
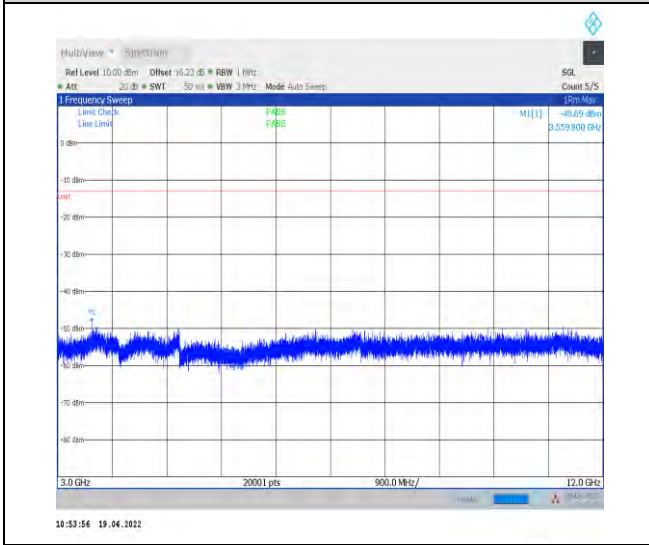
Unless otherwise agreed in writing, this document is issued by the Company subject to its General Conditions of Service printed overleaf, available on request or accessible at <http://www.sgs.com/en/Terms-and-Conditions.aspx> and, for electronic format documents, subject to Terms and Conditions for Electronic Documents at <http://www.sgs.com/en/Terms-and-Conditions/Terms-e-Documents.aspx>. Attention is drawn to the limitation of liability, indemnification and jurisdiction issues defined therein. Any holder of this document is advised that information contained hereon reflects the Company's findings at the time of its intervention only and within the limits of Client's instructions, if any. The Company's sole responsibility is to its Client and this document does not exonerate parties to a transaction from exercising all their rights and obligations under the transaction documents. This document cannot be reproduced except in full, without prior written approval of the Company. Any unauthorized alteration, forgery or falsification of the content or appearance of this document is unlawful and offenders may be prosecuted to the fullest extent of the law. Unless otherwise stated the results shown in this test report refer only to the sample(s) tested and such sample(s) are retained for 30 days only.
Attention: To check the authenticity of testing/inspection report & certificate, please contact us at telephone: (86-755) 8307 1443, or email: CN.Doccheck@sgs.com

South of No. 6 Plant, No. 1, Pansheng Road, Suzhou Industrial Park, Suzhou Area, China (Jiangsu) Pilot Free Trade Zone 215000 t (86-512) 62992980 www.sgs.com.cn
中国·苏州·中国(江苏)自由贸易试验区苏州片区苏州工业园区海胜路1号的6号厂房南楼 邮编: 215000 t (86-512) 62992980 sgs.china@sgs.com



1-N12--15-15-M-1-DFT-PI2BPSK-Inner_1RB_Left-1 @1-30-1000-Ant1--51.29--13-PASS

1-N12--15-15-M-1-DFT-PI2BPSK-Inner_1RB_Left-1 @1-1000-3000-Ant1--37.39--13-PASS



1-N12--15-15-M-1-DFT-PI2BPSK-Inner_1RB_Left-1 @1-3000-12000-Ant1--48.69--13-PASS

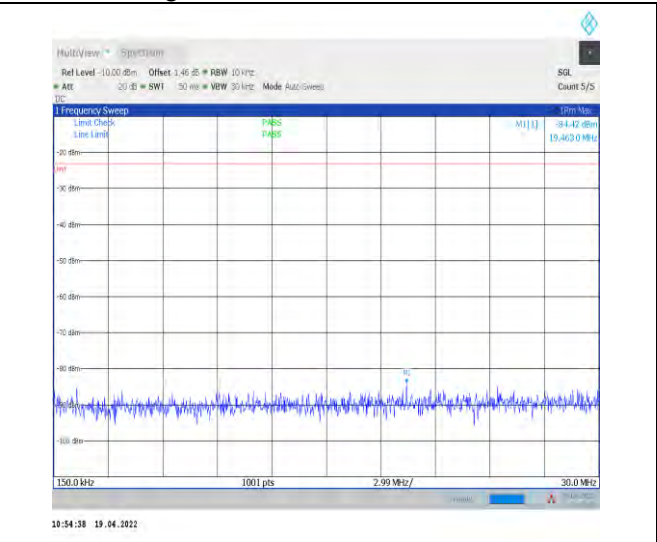
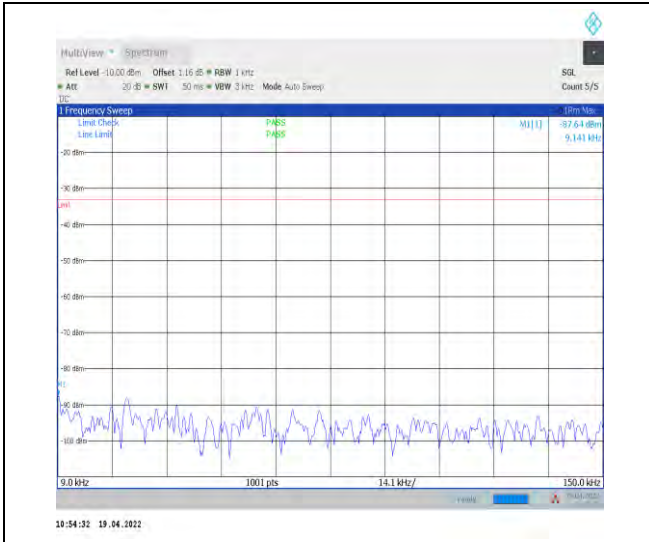
1-N12--15-15-M-1-DFT-PI2BPSK-Inner_1RB_Left-1 @1-12000-20000-Ant1--38.79--13-PASS



Unless otherwise agreed in writing, this document is issued by the Company subject to its General Conditions of Service printed overleaf, available on request or accessible at <http://www.sgs.com/en/Terms-and-Conditions.aspx> and, for electronic format documents, subject to Terms and Conditions for Electronic Documents at <http://www.sgs.com/en/Terms-and-Conditions/Terms-e-Documents.aspx>. Attention is drawn to the limitation of liability, indemnification and jurisdiction issues defined therein. Any holder of this document is advised that information contained hereon reflects the Company's findings at the time of its intervention only and within the limits of Client's instructions, if any. The Company's sole responsibility is to its Client and this document does not exonerate parties to a transaction from exercising all their rights and obligations under the transaction documents. This document cannot be reproduced except in full, without prior written approval of the Company. Any unauthorized alteration, forgery or falsification of the content or appearance of this document is unlawful and offenders may be prosecuted to the fullest extent of the law. Unless otherwise stated the results shown in this test report refer only to the sample(s) tested and such sample(s) are retained for 30 days only.

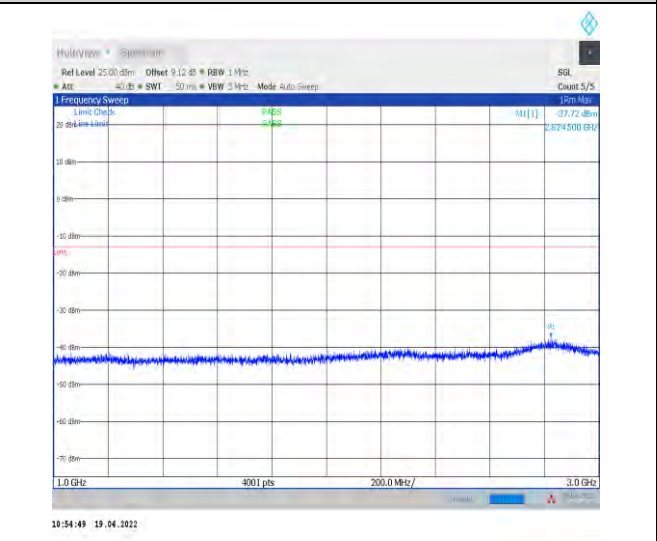
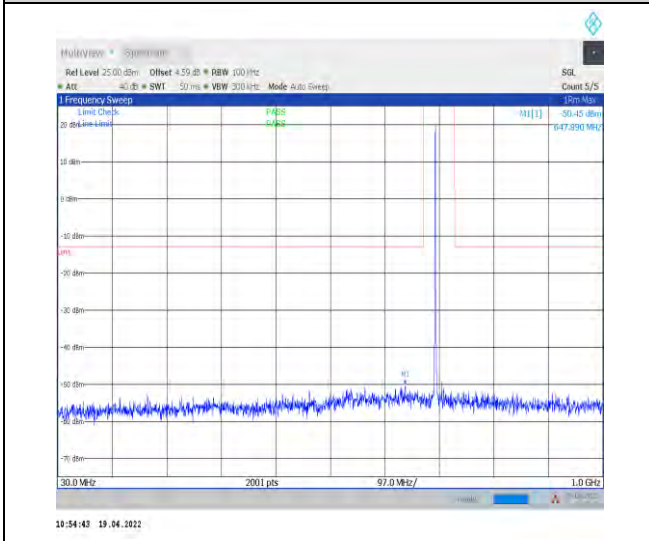
Attention: To check the authenticity of testing/inspection report & certificate, please contact us at telephone: (86-755) 8307 1443, or email: CN.Doccheck@sgs.com

South of No. 6 Plant, No. 1, Runsheng Road, Suzhou Industrial Park, Suzhou Area, China (Jiangsu) Pilot Free Trade Zone 215000 t (86-512) 62992980 www.sgs.com.cn
 中国·苏州·中国(江苏)自由贸易试验区苏州片区苏州工业园区润胜路1号的6号厂房南楼 邮编: 215000 t (86-512) 62992980 sgs.china@sgs.com



1-N12--15-15-H-1-DFT-PI2BPSK-Inner_1RB_Left-1
@1-0.009-0.15-Ant1--87.64--33-PASS

1-N12--15-15-H-1-DFT-PI2BPSK-Inner_1RB_Left-1
@1-0.15-30-Ant1--84.42--23-PASS



1-N12--15-15-H-1-DFT-PI2BPSK-Inner_1RB_Left-1
@1-30-1000-Ant1--50.45--13-PASS

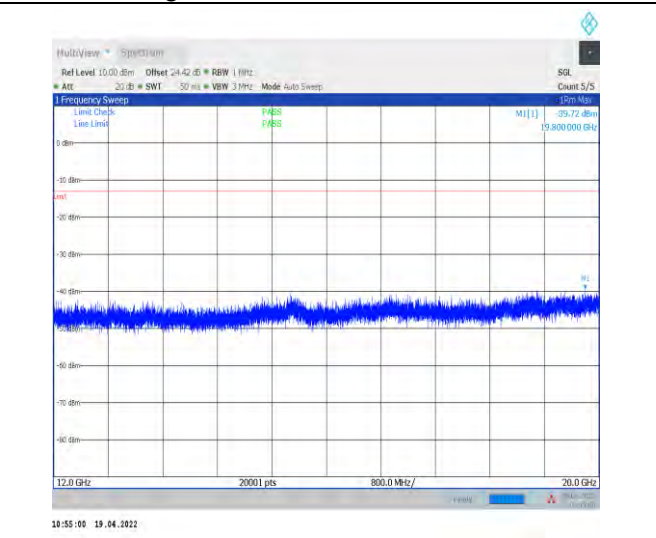
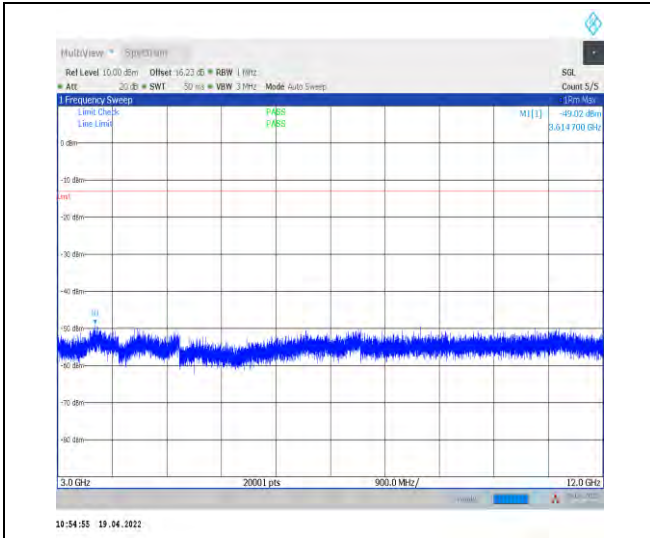
1-N12--15-15-H-1-DFT-PI2BPSK-Inner_1RB_Left-1
@1-1000-3000-Ant1--37.72--13-PASS



Unless otherwise agreed in writing, this document is issued by the Company subject to its General Conditions of Service printed overleaf, available on request or accessible at <http://www.sgs.com/en/Terms-and-Conditions.aspx> and, for electronic format documents, subject to Terms and Conditions for Electronic Documents at <http://www.sgs.com/en/Terms-and-Conditions/Terms-e-Document.aspx>. Attention is drawn to the limitation of liability, indemnification and jurisdiction issues defined therein. Any holder of this document is advised that information contained hereon reflects the Company's findings at the time of its intervention only and within the limits of Client's instructions, if any. The Company's sole responsibility is to its Client and this document does not exonerate parties to a transaction from exercising all their rights and obligations under the transaction documents. This document cannot be reproduced except in full, without prior written approval of the Company. Any unauthorized alteration, forgery or falsification of the content or appearance of this document is unlawful and offenders may be prosecuted to the fullest extent of the law. Unless otherwise stated the results shown in this test report refer only to the sample(s) tested and such sample(s) are retained for 30 days only.
Attention: To check the authenticity of testing/inspection report & certificate, please contact us at telephone: (86-755) 8307 1443, or email: CN.Doccheck@sgs.com

South of No. 6 Plant, No. 1, Pansheng Road, Suzhou Industrial Park, Suzhou Area, China (Jiangsu) Pilot Free Trade Zone 215000
中国·苏州·中国(江苏)自由贸易试验区苏州片区苏州工业园区海胜路1号的6号厂房南座 邮编: 215000

t (86-512) 62992980 www.sgs.com.cn
t (86-512) 62992980 sgs.china@sgs.com



1-N12--15-15-H-1-DFT-PI2BPSK-Inner_1RB_Left-1
@1-3000-12000-Ant1--49.02--13-PASS

1-N12--15-15-H-1-DFT-PI2BPSK-Inner_1RB_Left-1
@1-12000-20000-Ant1--39.72--13-PASS



Unless otherwise agreed in writing, this document is issued by the Company subject to its General Conditions of Service printed overleaf, available on request or accessible at <http://www.sgs.com/en/Terms-and-Conditions.aspx> and, for electronic format documents, subject to Terms and Conditions for Electronic Documents at <http://www.sgs.com/en/Terms-and-Conditions/Terms-e-Documents.aspx>. Attention is drawn to the limitation of liability, indemnification and jurisdiction issues defined therein. Any holder of this document is advised that information contained hereon reflects the Company's findings at the time of its intervention only and within the limits of Client's instructions, if any. The Company's sole responsibility is to its Client and this document does not exonerate parties to a transaction from exercising all their rights and obligations under the transaction documents. This document cannot be reproduced except in full, without prior written approval of the Company. Any unauthorized alteration, forgery or falsification of the content or appearance of this document is unlawful and offenders may be prosecuted to the fullest extent of the law. Unless otherwise stated the results shown in this test report refer only to the sample(s) tested and such sample(s) are retained for 30 days only.
Attention: To check the authenticity of testing/inspection report & certificate, please contact us at telephone: (86-755) 8307 1443, or email: CN.Doccheck@sgs.com

South of No. 6 Plant, No. 1, Runsheng Road, Suzhou Industrial Park, Suzhou Area, China (Jiangsu) Pilot Free Trade Zone 215000 t (86-512) 62992980 www.sgs.com.cn
中国·苏州·中国(江苏)自由贸易试验区苏州片区苏州工业园区海胜路1号的6号厂房南楼 邮编: 215000 t (86-512) 62992980 sgs.china@sgs.com

Field Strength of Spurious Radiation

Test Band = SA Band 12_ TM1

Test Channel = Low Channel

Final Data List									
NO.	Frequency [MHz]	Reading [dBμV]	Factor [dB]	Level [dBm]	Limit [dBm]	Margin [dB]	Height [cm]	Angle [°]	Polarity
1	1399.68	53.45	-118.59	-65.14	-13.00	52.14	263	357	Horizontal
2	2099.52	53.42	-116.04	-62.62	-13.00	49.62	251	175	Horizontal
3	2799.36	51.05	-113.02	-61.97	-13.00	48.97	175	357	Horizontal
4	3499.2	50.03	-111.91	-61.88	-13.00	48.88	265	175	Horizontal
5	4199.04	48.48	-109.45	-60.97	-13.00	47.97	284	298	Horizontal
6	4898.88	50.83	-108.05	-57.22	-13.00	44.22	144	50	Horizontal

Final Data List									
NO.	Frequency [MHz]	Reading [dBμV]	Factor [dB]	Level [dBm]	Limit [dBm]	Margin [dB]	Height [cm]	Angle [°]	Polarity
1	1399.68	53.41	-118.59	-65.18	-13.00	52.18	263	76	Vertical
2	2099.52	51.49	-116.04	-64.55	-13.00	51.55	241	278	Vertical
3	2799.36	51.87	-113.02	-61.15	-13.00	48.15	176	123	Vertical
4	3499.2	51.64	-111.91	-60.27	-13.00	47.27	284	360	Vertical
5	4199.04	48.53	-109.45	-60.92	-13.00	47.92	166	310	Vertical
6	4898.88	51.48	-108.05	-56.57	-13.00	43.57	324	295	Vertical



Unless otherwise agreed in writing, this document is issued by the Company subject to its General Conditions of Service printed overleaf, available on request or accessible at <http://www.sgs.com/en/Terms-and-Conditions.aspx> and, for electronic format documents, subject to Terms and Conditions for Electronic Documents at <http://www.sgs.com/en/Terms-and-Conditions/Terms-e-Documents.aspx>. Attention is drawn to the limitation of liability, indemnification and jurisdiction issues defined therein. Any holder of this document is advised that information contained hereon reflects the Company's findings at the time of its intervention only and within the limits of Client's instructions, if any. The Company's sole responsibility is to its Client and this document does not exonerate parties to a transaction from exercising all their rights and obligations under the transaction documents. This document cannot be reproduced except in full, without prior written approval of the Company. Any unauthorized alteration, forgery or falsification of the content or appearance of this document is unlawful and offenders may be prosecuted to the fullest extent of the law. Unless otherwise stated the results shown in this test report refer only to the sample(s) tested and such sample(s) are retained for 30 days only.

Attention: To check the authenticity of testing/inspection report & certificate, please contact us at telephone: (86-755) 8307 1443, or email: CN.Doccheck@sgs.com

South of No. 6 Plant, No. 1, Runsheng Road, Suzhou Industrial Park, Suzhou Area, China (Jiangsu) Pilot Free Trade Zone 215000
 中国·苏州·中国(江苏)自由贸易试验区苏州片区苏州工业园区润胜路1号的6号厂房南楼 邮编: 215000

t (86-512) 62992980 www.sgs.com.cn
 t (86-512) 62992980 sgs.china@sgs.com

Test Band = SA Band 12_ TM1

Test Channel = Mid Channel

Final Data List									
NO.	Frequency [MHz]	Reading [dBμV]	Factor [dB]	Level [dBm]	Limit [dBm]	Margin [dB]	Height [cm]	Angle [°]	Polarity
1	1401.68	51.71	-118.58	-66.87	-13.00	53.87	251	112	Horizontal
2	2102.52	52.40	-116.03	-63.63	-13.00	50.63	142	86	Horizontal
3	2803.36	50.41	-113.01	-62.60	-13.00	49.60	262	33	Horizontal
4	3504.2	51.90	-111.89	-59.99	-13.00	46.99	284	96	Horizontal
5	4205.04	48.71	-109.44	-60.73	-13.00	47.73	176	55	Horizontal
6	4905.88	49.83	-108.03	-58.20	-13.00	45.20	265	127	Horizontal

Final Data List									
NO.	Frequency [MHz]	Reading [dBμV]	Factor [dB]	Level [dBm]	Limit [dBm]	Margin [dB]	Height [cm]	Angle [°]	Polarity
1	1401.68	52.26	-118.58	-66.32	-13.00	53.32	263	155	Vertical
2	2102.52	52.84	-116.03	-63.19	-13.00	50.19	251	314	Vertical
3	2803.36	51.80	-113.01	-61.21	-13.00	48.21	174	353	Vertical
4	3504.2	50.49	-111.89	-61.40	-13.00	48.40	286	62	Vertical
5	4205.04	49.27	-109.44	-60.17	-13.00	47.17	264	187	Vertical
6	4905.88	51.04	-108.03	-56.99	-13.00	43.99	144	283	Vertical



Unless otherwise agreed in writing, this document is issued by the Company subject to its General Conditions of Service printed overleaf, available on request or accessible at <http://www.sgs.com/en/Terms-and-Conditions.aspx> and, for electronic format documents, subject to Terms and Conditions for Electronic Documents at <http://www.sgs.com/en/Terms-and-Conditions/Terms-e-Documents.aspx>. Attention is drawn to the limitation of liability, indemnification and jurisdiction issues defined therein. Any holder of this document is advised that information contained hereon reflects the Company's findings at the time of its intervention only and within the limits of Client's instructions, if any. The Company's sole responsibility is to its Client and this document does not exonerate parties to a transaction from exercising all their rights and obligations under the transaction documents. This document cannot be reproduced except in full, without prior written approval of the Company. Any unauthorized alteration, forgery or falsification of the content or appearance of this document is unlawful and offenders may be prosecuted to the fullest extent of the law. Unless otherwise stated the results shown in this test report refer only to the sample(s) tested and such sample(s) are retained for 30 days only.
Attention: To check the authenticity of testing/inspection report & certificate, please contact us at telephone: (86-755) 8307 1443, or email: CN.Doccheck@sgs.com

South of No. 6 Plant, No. 1, Runsheng Road, Suzhou Industrial Park, Suzhou Area, China (Jiangsu) Pilot Free Trade Zone 215000
 中国·苏州·中国(江苏)自由贸易试验区苏州片区苏州工业园区润胜路1号的6号厂房南楼 邮编: 215000

t (86-512) 62992980 www.sgs.com.cn
 t (86-512) 62992980 sgs.china@sgs.com

Test Band = SA Band 12_ TM1
Test Channel = High Channel

Final Data List									
NO.	Frequency [MHz]	Reading [dBμV]	Factor [dB]	Level [dBm]	Limit [dBm]	Margin [dB]	Height [cm]	Angle [°]	Polarity
1	1403.5556	63.64	-118.58	-54.94	-13.00	41.94	263	357	Horizontal
2	2104.4444	79.39	-116.02	-36.63	-13.00	23.63	251	313	Horizontal
3	2807.36	51.73	-113.00	-61.27	-13.00	48.27	174	76	Horizontal
4	3509.2	50.50	-111.88	-61.38	-13.00	48.38	286	0	Horizontal
5	4211.04	48.86	-109.43	-60.57	-13.00	47.57	264	266	Horizontal
6	4912.88	49.67	-108.00	-58.33	-13.00	45.33	188	156	Horizontal

Final Data List									
NO.	Frequency [MHz]	Reading [dBμV]	Factor [dB]	Level [dBm]	Limit [dBm]	Margin [dB]	Height [cm]	Angle [°]	Polarity
1	1403.68	52.88	-118.58	-65.70	-13.00	52.70	142	313	Vertical
2	2105.52	53.05	-116.02	-62.97	-13.00	49.97	263	360	Vertical
3	2807.36	51.29	-113.00	-61.71	-13.00	48.71	284	187	Vertical
4	3509.2	50.89	-111.88	-60.99	-13.00	47.99	176	218	Vertical
5	4211.04	48.07	-109.43	-61.36	-13.00	48.36	264	360	Vertical
6	4912.88	50.35	-108.00	-57.65	-13.00	44.65	188	77	Vertical



Unless otherwise agreed in writing, this document is issued by the Company subject to its General Conditions of Service printed overleaf, available on request or accessible at <http://www.sgs.com/en/Terms-and-Conditions.aspx> and, for electronic format documents, subject to Terms and Conditions for Electronic Documents at <http://www.sgs.com/en/Terms-and-Conditions/Terms-e-Documents.aspx>. Attention is drawn to the limitation of liability, indemnification and jurisdiction issues defined therein. Any holder of this document is advised that information contained hereon reflects the Company's findings at the time of its intervention only and within the limits of Client's instructions, if any. The Company's sole responsibility is to its Client and this document does not exonerate parties to a transaction from exercising all their rights and obligations under the transaction documents. This document cannot be reproduced except in full, without prior written approval of the Company. Any unauthorized alteration, forgery or falsification of the content or appearance of this document is unlawful and offenders may be prosecuted to the fullest extent of the law. Unless otherwise stated the results shown in this test report refer only to the sample(s) tested and such sample(s) are retained for 30 days only.
Attention: To check the authenticity of testing/inspection report & certificate, please contact us at telephone: (86-755) 8307 1443, or email: CN.Doccheck@sgs.com

South of No. 6 Plant, No. 1, Runsheng Road, Suzhou Industrial Park, Suzhou Area, China (Jiangsu) Pilot Free Trade Zone 215000 t (86-512) 62992980 www.sgs.com.cn
 中国·苏州·中国(江苏)自由贸易试验区苏州片区苏州工业园区海胜路1号的6号厂房南楼 邮编: 215000 t (86-512) 62992980 sgs.china@sgs.com



Report No.: SEWA2204000008RG02

Rev.: 01

Page: 50 of 52



Unless otherwise agreed in writing, this document is issued by the Company subject to its General Conditions of Service printed overleaf, available on request or accessible at <http://www.sgs.com/en/Terms-and-Conditions.aspx> and, for electronic format documents, subject to Terms and Conditions for Electronic Documents at <http://www.sgs.com/en/Terms-and-Conditions/Terms-e-Documents.aspx>. Attention is drawn to the limitation of liability, indemnification and jurisdiction issues defined therein. Any holder of this document is advised that information contained hereon reflects the Company's findings at the time of its intervention only and within the limits of Client's instructions, if any. The Company's sole responsibility is to its Client and this document does not exonerate parties to a transaction from exercising all their rights and obligations under the transaction documents. This document cannot be reproduced except in full, without prior written approval of the Company. Any unauthorized alteration, forgery or falsification of the content or appearance of this document is unlawful and offenders may be prosecuted to the fullest extent of the law. Unless otherwise stated the results shown in this test report refer only to the sample(s) tested and such sample(s) are retained for 30 days only.
Attention: To check the authenticity of testing/inspection report & certificate, please contact us at telephone: (86-755) 8307 1443, or email: CN.Doccheck@sgs.com

South of No. 6 Plant, No. 1, Runsheng Road, Suzhou Industrial Park, Suzhou Area, China (Jiangsu) Pilot Free Trade Zone 215000 t (86-512) 62992980 www.sgs.com.cn
中国·苏州·中国(江苏)自由贸易试验区苏州片区苏州工业园区海胜路1号的6号厂房南楼 邮编: 215000 t (86-512) 62992980 sgs.china@sgs.com

Frequency Stability for SA

Test Result

Frequency Error VS. Voltage

Voltage										
Band	SCS	Bandwidth	Modulation	Channel	RB Config	Voltage	Temperature	Deviation(Hz)	Deviation (ppm)	Verdict
N12	15	15	DFT-PI2BPSK	M	Outer_Full	VH	NT	-1.600000	-0.002261	PASS
N12	15	15	DFT-PI2BPSK	M	Outer_Full	VN	NT	-3.000000	-0.004240	PASS
N12	15	15	DFT-PI2BPSK	M	Outer_Full	VL	NT	-2.800000	-0.003958	PASS
N12	15	15	CP-QPSK	M	Outer_Full	VH	NT	1.400000	0.001979	PASS
N12	15	15	CP-QPSK	M	Outer_Full	VN	NT	-0.700000	-0.000989	PASS
N12	15	15	CP-QPSK	M	Outer_Full	VL	NT	-0.500000	-0.000707	PASS



Unless otherwise agreed in writing, this document is issued by the Company subject to its General Conditions of Service printed overleaf, available on request or accessible at <http://www.sgs.com/en/Terms-and-Conditions.aspx> and, for electronic format documents, subject to Terms and Conditions for Electronic Documents at <http://www.sgs.com/en/Terms-and-Conditions/Terms-e-Documents.aspx>. Attention is drawn to the limitation of liability, indemnification and jurisdiction issues defined therein. Any holder of this document is advised that information contained hereon reflects the Company's findings at the time of its intervention only and within the limits of Client's instructions, if any. The Company's sole responsibility is to its Client and this document does not exonerate parties to a transaction from exercising all their rights and obligations under the transaction documents. This document cannot be reproduced except in full, without prior written approval of the Company. Any unauthorized alteration, forgery or falsification of the content or appearance of this document is unlawful and offenders may be prosecuted to the fullest extent of the law. Unless otherwise stated the results shown in this test report refer only to the sample(s) tested and such sample(s) are retained for 30 days only.

Attention: To check the authenticity of testing/inspection report & certificate, please contact us at telephone: (86-755) 8307 1443, or email: CN.Doccheck@sgs.com

South of No. 6 Plant, No. 1, Pansheng Road, Suzhou Industrial Park, Suzhou Area, China (Jiangsu) Pilot Free Trade Zone 215000
 中国·苏州·中国(江苏)自由贸易试验区苏州片区苏州工业园区海胜路1号的6号厂房南楼 邮编: 215000

t (86-512) 62992980 www.sgs.com.cn
 t (86-512) 62992980 sgs.china@sgs.com

Frequency Error VS. Temperature

Voltage										
Band	SCS	Bandwidth	Modulation	Channel	RB Config	Voltage	Temperature	Deviation(Hz)	Deviation (ppm)	Verdict
N12	15	15	DFT-PI2BPSK	M	Outer_Full	NV	-30	-1.500000	-0.002120	PASS
N12	15	15	DFT-PI2BPSK	M	Outer_Full	NV	-20	-2.400000	-0.003392	PASS
N12	15	15	DFT-PI2BPSK	M	Outer_Full	NV	-10	-1.300000	-0.001837	PASS
N12	15	15	DFT-PI2BPSK	M	Outer_Full	NV	0	-0.800000	-0.001131	PASS
N12	15	15	DFT-PI2BPSK	M	Outer_Full	NV	10	-2.800000	-0.003958	PASS
N12	15	15	DFT-PI2BPSK	M	Outer_Full	NV	20	-1.400000	-0.001979	PASS
N12	15	15	DFT-PI2BPSK	M	Outer_Full	NV	30	-3.100000	-0.004382	PASS
N12	15	15	DFT-PI2BPSK	M	Outer_Full	NV	40	-2.400000	-0.003392	PASS
N12	15	15	DFT-PI2BPSK	M	Outer_Full	NV	50	-1.800000	-0.002544	PASS
N12	15	15	CP-QPSK	M	Outer_Full	NV	-30	-0.100000	-0.000141	PASS
N12	15	15	CP-QPSK	M	Outer_Full	NV	-20	-1.100000	-0.001555	PASS
N12	15	15	CP-QPSK	M	Outer_Full	NV	-10	-0.900000	-0.001272	PASS
N12	15	15	CP-QPSK	M	Outer_Full	NV	0	0.200000	0.000283	PASS
N12	15	15	CP-QPSK	M	Outer_Full	NV	10	-0.800000	-0.001131	PASS
N12	15	15	CP-QPSK	M	Outer_Full	NV	20	-1.000000	-0.001413	PASS
N12	15	15	CP-QPSK	M	Outer_Full	NV	30	-0.600000	-0.000848	PASS
N12	15	15	CP-QPSK	M	Outer_Full	NV	40	0.000000	0.000000	PASS
N12	15	15	CP-QPSK	M	Outer_Full	NV	50	-0.200000	-0.000283	PASS

The End



Unless otherwise agreed in writing, this document is issued by the Company subject to its General Conditions of Service printed overleaf, available on request or accessible at <http://www.sgs.com/en/Terms-and-Conditions.aspx> and, for electronic format documents, subject to Terms and Conditions for Electronic Documents at <http://www.sgs.com/en/Terms-and-Conditions/Terms-e-Documents.aspx>. Attention is drawn to the limitation of liability, indemnification and jurisdiction issues defined therein. Any holder of this document is advised that information contained hereon reflects the Company's findings at the time of its intervention only and within the limits of Client's instructions, if any. The Company's sole responsibility is to its Client and this document does not exonerate parties to a transaction from exercising all their rights and obligations under the transaction documents. This document cannot be reproduced except in full, without prior written approval of the Company. Any unauthorized alteration, forgery or falsification of the content or appearance of this document is unlawful and offenders may be prosecuted to the fullest extent of the law. Unless otherwise stated the results shown in this test report refer only to the sample(s) tested and such sample(s) are retained for 30 days only.

Attention: To check the authenticity of testing/inspection report & certificate, please contact us at telephone: (86-755) 8307 1443, or email: CN.Doccheck@sgs.com

South of No. 6 Plant, No. 1, Pansheng Road, Suzhou Industrial Park, Suzhou Area, China (Jiangsu) Pilot Free Trade Zone 215000 t (86-512) 62992980 www.sgs.com.cn
 中国·苏州·中国(江苏)自由贸易试验区苏州片区苏州工业园区海胜路1号的6号厂房南楼 邮编: 215000 t (86-512) 62992980 sgs.china@sgs.com