

Report No.: SEWA2204000008RG02

Rev.: 01

Page: 1 of 42

# Appendix B.33

## NR Band n14



Unless otherwise agreed in writing, this document is issued by the Company subject to its General Conditions of Service printed overleaf, available on request or accessible at <http://www.sgs.com/en/Terms-and-Conditions.aspx> and, for electronic format documents, subject to Terms and Conditions for Electronic Documents at <http://www.sgs.com/en/Terms-and-Conditions/Terms-e-Documents.aspx>. Attention is drawn to the limitation of liability, indemnification and jurisdiction issues defined therein. Any holder of this document is advised that information contained hereon reflects the Company's findings at the time of its intervention only and within the limits of Client's instructions, if any. The Company's sole responsibility is to its Client and this document does not exonerate parties to a transaction from exercising all their rights and obligations under the transaction documents. This document cannot be reproduced except in full, without prior written approval of the Company. Any unauthorized alteration, forgery or falsification of the content or appearance of this document is unlawful and offenders may be prosecuted to the fullest extent of the law. Unless otherwise stated the results shown in this test report refer only to the sample(s) tested and such sample(s) are retained for 30 days only.  
**Attention: To check the authenticity of testing/inspection report & certificate, please contact us at telephone: (86-755) 8307 1443, or email: CN.Doccheck@sgs.com**

### Effective (Isotropic) Radiated Power Output Data for SA

#### Test Result

Band	SCS	Bandwidth	Modulation	Channel	RB Config	Power (dBm)	ERP (dBm)	LIMIT (dBm)	Verdict
N14	15	5	DFT-PI2BPSK	L	Inner_1RB_Left	23.36	23.63	34.77	PASS
N14	15	5	DFT-PI2BPSK	L	Inner_1RB_Right	23.23	23.5	34.77	PASS
N14	15	5	DFT-PI2BPSK	L	Outer_Full	23.32	23.59	34.77	PASS
N14	15	5	DFT-QPSK	L	Inner_1RB_Left	23.34	23.61	34.77	PASS
N14	15	5	DFT-QPSK	L	Inner_1RB_Right	23.15	23.42	34.77	PASS
N14	15	5	DFT-QPSK	L	Outer_Full	23.29	23.56	34.77	PASS
N14	15	5	DFT-16QAM	L	Inner_1RB_Left	23.73	24	34.77	PASS
N14	15	5	DFT-16QAM	L	Inner_1RB_Right	23.48	23.75	34.77	PASS
N14	15	5	DFT-16QAM	L	Outer_Full	22.29	22.56	34.77	PASS
N14	15	5	DFT-64QAM	L	Inner_1RB_Left	21.77	22.04	34.77	PASS
N14	15	5	DFT-64QAM	L	Inner_1RB_Right	21.49	21.76	34.77	PASS
N14	15	5	DFT-64QAM	L	Outer_Full	21.92	22.19	34.77	PASS
N14	15	5	DFT-256QAM	L	Inner_1RB_Left	19.58	19.85	34.77	PASS
N14	15	5	DFT-256QAM	L	Inner_1RB_Right	19.39	19.66	34.77	PASS
N14	15	5	DFT-256QAM	L	Outer_Full	19.74	20.01	34.77	PASS
N14	15	5	DFT-PI2BPSK	M	Inner_1RB_Left	23.28	23.55	34.77	PASS
N14	15	5	DFT-PI2BPSK	M	Inner_1RB_Right	23.18	23.45	34.77	PASS
N14	15	5	DFT-PI2BPSK	M	Outer_Full	23.29	23.56	34.77	PASS
N14	15	5	DFT-QPSK	M	Inner_1RB_Left	23.26	23.53	34.77	PASS
N14	15	5	DFT-QPSK	M	Inner_1RB_Right	23.11	23.38	34.77	PASS
N14	15	5	DFT-QPSK	M	Outer_Full	23.25	23.52	34.77	PASS
N14	15	5	DFT-16QAM	M	Inner_1RB_Left	23.64	23.91	34.77	PASS
N14	15	5	DFT-16QAM	M	Inner_1RB_Right	23.47	23.74	34.77	PASS
N14	15	5	DFT-16QAM	M	Outer_Full	22.14	22.41	34.77	PASS
N14	15	5	DFT-64QAM	M	Inner_1RB_Left	21.64	21.91	34.77	PASS
N14	15	5	DFT-64QAM	M	Inner_1RB_Right	21.5	21.77	34.77	PASS
N14	15	5	DFT-64QAM	M	Outer_Full	21.78	22.05	34.77	PASS
N14	15	5	DFT-256QAM	M	Inner_1RB_Left	19.48	19.75	34.77	PASS
N14	15	5	DFT-256QAM	M	Inner_1RB_Right	19.38	19.65	34.77	PASS
N14	15	5	DFT-256QAM	M	Outer_Full	19.58	19.85	34.77	PASS
N14	15	5	DFT-PI2BPSK	H	Inner_1RB_Left	23.28	23.55	34.77	PASS



Unless otherwise agreed in writing, this document is issued by the Company subject to its General Conditions of Service printed overleaf, available on request or accessible at <http://www.sgs.com/en/Terms-and-Conditions.aspx> and, for electronic format documents, subject to Terms and Conditions for Electronic Documents at <http://www.sgs.com/en/Terms-and-Conditions/Terms-e-Documents.aspx>. Attention is drawn to the limitation of liability, indemnification and jurisdiction issues defined therein. Any holder of this document is advised that information contained hereon reflects the Company's findings at the time of its intervention only and within the limits of Client's instructions, if any. The Company's sole responsibility is to its Client and this document does not exonerate parties to a transaction from exercising all their rights and obligations under the transaction documents. This document cannot be reproduced except in full, without prior written approval of the Company. Any unauthorized alteration, forgery or falsification of the content or appearance of this document is unlawful and offenders may be prosecuted to the fullest extent of the law. Unless otherwise stated the results shown in this test report refer only to the sample(s) tested and such sample(s) are retained for 30 days only.

Attention: To check the authenticity of testing/inspection report & certificate, please contact us at telephone: (86-755) 8307 1443, or email: [CN.Doccheck@sgs.com](mailto:CN.Doccheck@sgs.com)

South of No. 6 Plant, No. 1, Pansheng Road, Suzhou Industrial Park, Suzhou Area, China (Jiangsu) Pilot Free Trade Zone 215000 t (86-512) 62992980 www.sgs.com.cn  
 中国·苏州·中国(江苏)自由贸易试验区苏州片区苏州工业园区海胜路1号的6号厂房南楼 邮编: 215000 t (86-512) 62992980 sgs.china@sgs.com

N14	15	5	DFT-PI2BPSK	H	Inner_1RB_Right	23.15	23.42	34.77	PASS
N14	15	5	DFT-PI2BPSK	H	Outer_Full	23.23	23.5	34.77	PASS
N14	15	5	DFT-QPSK	H	Inner_1RB_Left	23.25	23.52	34.77	PASS
N14	15	5	DFT-QPSK	H	Inner_1RB_Right	23.18	23.45	34.77	PASS
N14	15	5	DFT-QPSK	H	Outer_Full	23.19	23.46	34.77	PASS
N14	15	5	DFT-16QAM	H	Inner_1RB_Left	23.55	23.82	34.77	PASS
N14	15	5	DFT-16QAM	H	Inner_1RB_Right	23.55	23.82	34.77	PASS
N14	15	5	DFT-16QAM	H	Outer_Full	22.18	22.45	34.77	PASS
N14	15	5	DFT-64QAM	H	Inner_1RB_Left	21.5	21.77	34.77	PASS
N14	15	5	DFT-64QAM	H	Inner_1RB_Right	21.53	21.8	34.77	PASS
N14	15	5	DFT-64QAM	H	Outer_Full	21.8	22.07	34.77	PASS
N14	15	5	DFT-256QAM	H	Inner_1RB_Left	19.32	19.59	34.77	PASS
N14	15	5	DFT-256QAM	H	Inner_1RB_Right	19.38	19.65	34.77	PASS
N14	15	5	DFT-256QAM	H	Outer_Full	19.58	19.85	34.77	PASS
N14	15	10	DFT-PI2BPSK	L	Inner_1RB_Left	23.33	23.6	34.77	PASS
N14	15	10	DFT-PI2BPSK	L	Inner_1RB_Right	23.15	23.42	34.77	PASS
N14	15	10	DFT-PI2BPSK	L	Outer_Full	23.22	23.49	34.77	PASS
N14	15	10	DFT-QPSK	L	Inner_1RB_Left	23.38	23.65	34.77	PASS
N14	15	10	DFT-QPSK	L	Inner_1RB_Right	23.15	23.42	34.77	PASS
N14	15	10	DFT-QPSK	L	Outer_Full	23.18	23.45	34.77	PASS
N14	15	10	DFT-16QAM	L	Inner_1RB_Left	23.72	23.99	34.77	PASS
N14	15	10	DFT-16QAM	L	Inner_1RB_Right	23.57	23.84	34.77	PASS
N14	15	10	DFT-16QAM	L	Outer_Full	22.14	22.41	34.77	PASS
N14	15	10	DFT-64QAM	L	Inner_1RB_Left	21.65	21.92	34.77	PASS
N14	15	10	DFT-64QAM	L	Inner_1RB_Right	21.53	21.8	34.77	PASS
N14	15	10	DFT-64QAM	L	Outer_Full	21.72	21.99	34.77	PASS
N14	15	10	DFT-256QAM	L	Inner_1RB_Left	19.43	19.7	34.77	PASS
N14	15	10	DFT-256QAM	L	Inner_1RB_Right	19.42	19.69	34.77	PASS
N14	15	10	DFT-256QAM	L	Outer_Full	19.64	19.91	34.77	PASS
N14	15	10	DFT-PI2BPSK	M	Inner_1RB_Left	23.29	23.56	34.77	PASS
N14	15	10	DFT-PI2BPSK	M	Inner_1RB_Right	23.16	23.43	34.77	PASS
N14	15	10	DFT-PI2BPSK	M	Outer_Full	23.27	23.54	34.77	PASS
N14	15	10	DFT-QPSK	M	Inner_1RB_Left	23.32	23.59	34.77	PASS
N14	15	10	DFT-QPSK	M	Inner_1RB_Right	23.17	23.44	34.77	PASS
N14	15	10	DFT-QPSK	M	Outer_Full	23.27	23.54	34.77	PASS
N14	15	10	DFT-16QAM	M	Inner_1RB_Left	23.78	24.05	34.77	PASS
N14	15	10	DFT-16QAM	M	Inner_1RB_Right	23.65	23.92	34.77	PASS
N14	15	10	DFT-16QAM	M	Outer_Full	22.05	22.32	34.77	PASS



Unless otherwise agreed in writing, this document is issued by the Company subject to its General Conditions of Service printed overleaf, available on request or accessible at <http://www.sgs.com/en/Terms-and-Conditions.aspx> and, for electronic format documents, subject to Terms and Conditions for Electronic Documents at <http://www.sgs.com/en/Terms-and-Conditions/Terms-e-Documents.aspx>. Attention is drawn to the limitation of liability, indemnification and jurisdiction issues defined therein. Any holder of this document is advised that information contained hereon reflects the Company's findings at the time of its intervention only and within the limits of Client's instructions, if any. The Company's sole responsibility is to its Client and this document does not exonerate parties to a transaction from exercising all their rights and obligations under the transaction documents. This document cannot be reproduced except in full, without prior written approval of the Company. Any unauthorized alteration, forgery or falsification of the content or appearance of this document is unlawful and offenders may be prosecuted to the fullest extent of the law. Unless otherwise stated the results shown in this test report refer only to the sample(s) tested and such sample(s) are retained for 30 days only.

**Attention:** To check the authenticity of testing/inspection report & certificate, please contact us at telephone: (86-755) 8307 1443, or email: [CN.Doccheck@sgs.com](mailto:CN.Doccheck@sgs.com)

South of No. 6 Plant, No. 1, Pansheng Road, Suzhou Industrial Park, Suzhou Area, China (Jiangsu) Pilot Free Trade Zone 215000 t (86-512) 62992980 www.sgs.com.cn  
 中国·苏州·中国(江苏)自由贸易试验区苏州片区苏州工业园区海胜路1号的6号厂房南楼 邮编: 215000 t (86-512) 62992980 sgs.china@sgs.com



Report No.: SEWA2204000008RG02

Rev.: 01

Page: 4 of 42

N14	15	10	DFT-64QAM	M	Inner_1RB_Left	21.7	21.97	34.77	PASS
N14	15	10	DFT-64QAM	M	Inner_1RB_Right	21.49	21.76	34.77	PASS
N14	15	10	DFT-64QAM	M	Outer_Full	21.71	21.98	34.77	PASS
N14	15	10	DFT-256QAM	M	Inner_1RB_Left	19.52	19.79	34.77	PASS
N14	15	10	DFT-256QAM	M	Inner_1RB_Right	19.38	19.65	34.77	PASS
N14	15	10	DFT-256QAM	M	Outer_Full	19.63	19.9	34.77	PASS
N14	15	10	DFT-PI2BPSK	H	Inner_1RB_Left	23.31	23.58	34.77	PASS
N14	15	10	DFT-PI2BPSK	H	Inner_1RB_Right	23.1	23.37	34.77	PASS
N14	15	10	DFT-PI2BPSK	H	Outer_Full	23.21	23.48	34.77	PASS
N14	15	10	DFT-QPSK	H	Inner_1RB_Left	23.35	23.62	34.77	PASS
N14	15	10	DFT-QPSK	H	Inner_1RB_Right	23.14	23.41	34.77	PASS
N14	15	10	DFT-QPSK	H	Outer_Full	23.21	23.48	34.77	PASS
N14	15	10	DFT-16QAM	H	Inner_1RB_Left	23.72	23.99	34.77	PASS
N14	15	10	DFT-16QAM	H	Inner_1RB_Right	23.57	23.84	34.77	PASS
N14	15	10	DFT-16QAM	H	Outer_Full	22.09	22.36	34.77	PASS
N14	15	10	DFT-64QAM	H	Inner_1RB_Left	21.66	21.93	34.77	PASS
N14	15	10	DFT-64QAM	H	Inner_1RB_Right	21.51	21.78	34.77	PASS
N14	15	10	DFT-64QAM	H	Outer_Full	21.73	22	34.77	PASS
N14	15	10	DFT-256QAM	H	Inner_1RB_Left	19.44	19.71	34.77	PASS
N14	15	10	DFT-256QAM	H	Inner_1RB_Right	19.4	19.67	34.77	PASS
N14	15	10	DFT-256QAM	H	Outer_Full	19.64	19.91	34.77	PASS



Unless otherwise agreed in writing, this document is issued by the Company subject to its General Conditions of Service printed overleaf, available on request or accessible at <http://www.sgs.com/en/Terms-and-Conditions.aspx> and, for electronic format documents, subject to Terms and Conditions for Electronic Documents at <http://www.sgs.com/en/Terms-and-Conditions/Terms-e-Documents.aspx>. Attention is drawn to the limitation of liability, indemnification and jurisdiction issues defined therein. Any holder of this document is advised that information contained hereon reflects the Company's findings at the time of its intervention only and within the limits of Client's instructions, if any. The Company's sole responsibility is to its Client and this document does not exonerate parties to a transaction from exercising all their rights and obligations under the transaction documents. This document cannot be reproduced except in full, without prior written approval of the Company. Any unauthorized alteration, forgery or falsification of the content or appearance of this document is unlawful and offenders may be prosecuted to the fullest extent of the law. Unless otherwise stated the results shown in this test report refer only to the sample(s) tested and such sample(s) are retained for 30 days only.

Attention: To check the authenticity of testing/inspection report & certificate, please contact us at telephone: (86-755) 8307 1443, or email: [CN.Doccheck@sgs.com](mailto:CN.Doccheck@sgs.com)

South of No. 6 Plant, No. 1, Pansheng Road, Suzhou Industrial Park, Suzhou Area, China (Jiangsu) Pilot Free Trade Zone 215000  
 中国·苏州·中国(江苏)自由贸易试验区苏州片区苏州工业园区海胜路1号的6号厂房南楼 邮编: 215000

t (86-512) 62992980 www.sgs.com.cn  
 t (86-512) 62992980 sgs.china@sgs.com



## Peak-to-Average Ratio for SA

### Test Result

Band	SCS	Bandwidth	Modulation	Channel	RB Config	Duty Cycle	Factor	Result	Limit	Verdict
N14	15	10	DFT-256QAM	L	Outer_Full	100%	0.00	8.90	≤13	PASS
N14	15	10	CP-256QAM	L	Outer_Full	100%	0.00	9.40	≤13	PASS
N14	15	10	DFT-256QAM	M	Outer_Full	100%	0.00	8.79	≤13	PASS
N14	15	10	CP-256QAM	M	Outer_Full	100%	0.00	9.39	≤13	PASS
N14	15	10	DFT-256QAM	H	Outer_Full	100%	0.00	8.81	≤13	PASS
N14	15	10	CP-256QAM	H	Outer_Full	100%	0.00	9.40	≤13	PASS



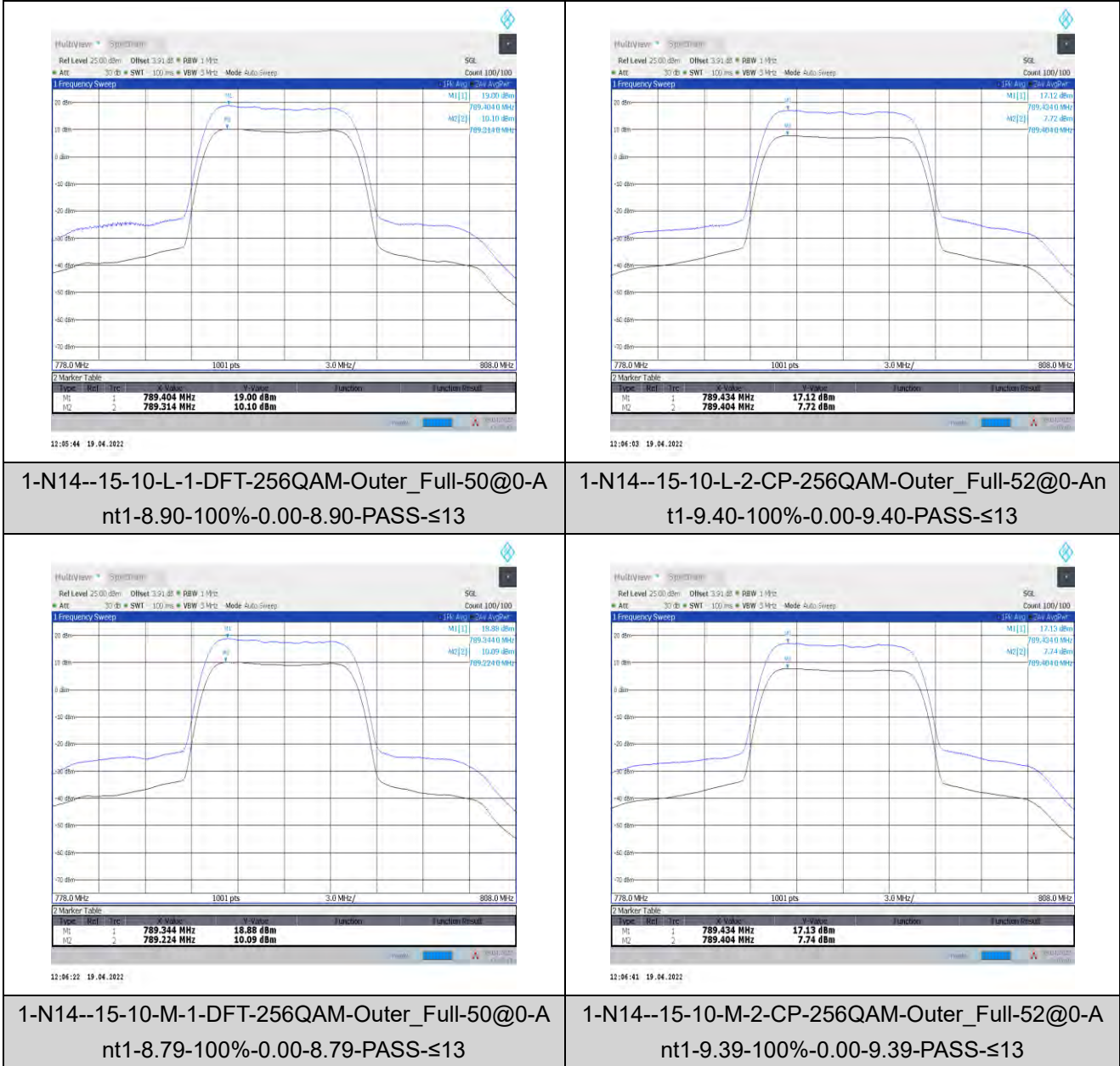
Unless otherwise agreed in writing, this document is issued by the Company subject to its General Conditions of Service printed overleaf, available on request or accessible at <http://www.sgs.com/en/Terms-and-Conditions.aspx> and, for electronic format documents, subject to Terms and Conditions for Electronic Documents at <http://www.sgs.com/en/Terms-and-Conditions/Terms-e-Documents.aspx>. Attention is drawn to the limitation of liability, indemnification and jurisdiction issues defined therein. Any holder of this document is advised that information contained hereon reflects the Company's findings at the time of its intervention only and within the limits of Client's instructions, if any. The Company's sole responsibility is to its Client and this document does not exonerate parties to a transaction from exercising all their rights and obligations under the transaction documents. This document cannot be reproduced except in full, without prior written approval of the Company. Any unauthorized alteration, forgery or falsification of the content or appearance of this document is unlawful and offenders may be prosecuted to the fullest extent of the law. Unless otherwise stated the results shown in this test report refer only to the sample(s) tested and such sample(s) are retained for 30 days only.

Attention: To check the authenticity of testing/inspection report & certificate, please contact us at telephone: (86-755) 8307 1443, or email: [CN.Doccheck@sgs.com](mailto:CN.Doccheck@sgs.com)

South of No. 6 Plant, No. 1, Runsheng Road, Suzhou Industrial Park, Suzhou Area, China (Jiangsu) Pilot Free Trade Zone 215000  
 中国·苏州·中国(江苏)自由贸易试验区苏州片区苏州工业园区润胜路1号的6号厂房南楼 邮编: 215000

t (86-512) 62992980 www.sgs.com.cn  
 t (86-512) 62992980 sgs.china@sgs.com

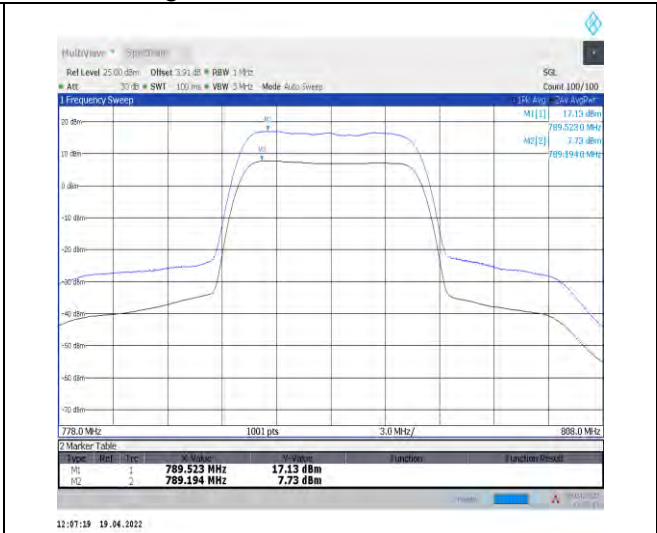
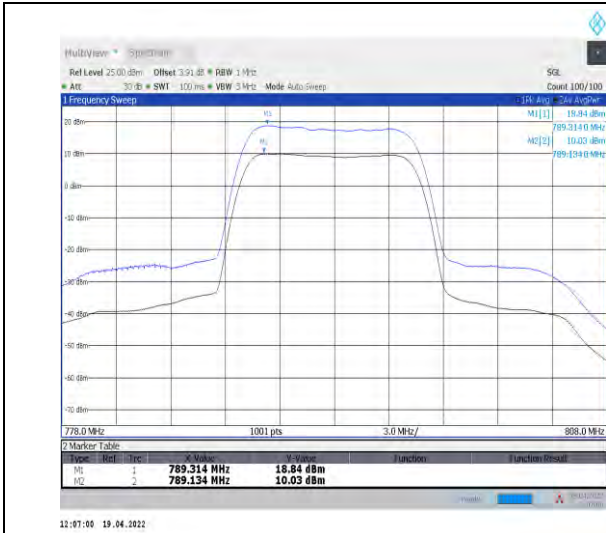
Test Graphs



Unless otherwise agreed in writing, this document is issued by the Company subject to its General Conditions of Service printed overleaf, available on request or accessible at <http://www.sgs.com/en/Terms-and-Conditions.aspx> and, for electronic format documents, subject to Terms and Conditions for Electronic Documents at <http://www.sgs.com/en/Terms-and-Conditions/Terms-e-Documents.aspx>. Attention is drawn to the limitation of liability, indemnification and jurisdiction issues defined therein. Any holder of this document is advised that information contained hereon reflects the Company's findings at the time of its intervention only and within the limits of Client's instructions, if any. The Company's sole responsibility is to its Client and this document does not exonerate parties to a transaction from exercising all their rights and obligations under the transaction documents. This document cannot be reproduced except in full, without prior written approval of the Company. Any unauthorized alteration, forgery or falsification of the content or appearance of this document is unlawful and offenders may be prosecuted to the fullest extent of the law. Unless otherwise stated the results shown in this test report refer only to the sample(s) tested and such sample(s) are retained for 30 days only.  
**Attention: To check the authenticity of testing/inspection report & certificate, please contact us at telephone: (86-755) 8307 1443, or email: CN.Doccheck@sgs.com**

South of No. 6 Plant, No. 1, Pulinsheng Road, Suzhou Industrial Park, Suzhou Area, China (Jiangsu) Pilot Free Trade Zone 215000  
 中国·苏州·中国(江苏)自由贸易试验区苏州片区苏州工业园区海胜路1号的6号厂房南楼 邮编: 215000

t (86-512) 62992980 www.sgs.com.cn  
 t (86-512) 62992980 sgs.china@sgs.com



1-N14--15-10-H-1-DFT-256QAM-Outer\_Full-50@0-A  
nt1-8.81-100%-0.00-8.81-PASS-≤13

1-N14--15-10-H-2-CP-256QAM-Outer\_Full-52@0-A  
nt1-9.40-100%-0.00-9.40-PASS-≤13



Unless otherwise agreed in writing, this document is issued by the Company subject to its General Conditions of Service printed overleaf, available on request or accessible at <http://www.sgs.com/en/Terms-and-Conditions.aspx> and, for electronic format documents, subject to Terms and Conditions for Electronic Documents at <http://www.sgs.com/en/Terms-and-Conditions/Terms-e-Documents.aspx>. Attention is drawn to the limitation of liability, indemnification and jurisdiction issues defined therein. Any holder of this document is advised that information contained hereon reflects the Company's findings at the time of its intervention only and within the limits of Client's instructions, if any. The Company's sole responsibility is to its Client and this document does not exonerate parties to a transaction from exercising all their rights and obligations under the transaction documents. This document cannot be reproduced except in full, without prior written approval of the Company. Any unauthorized alteration, forgery or falsification of the content or appearance of this document is unlawful and offenders may be prosecuted to the fullest extent of the law. Unless otherwise stated the results shown in this test report refer only to the sample(s) tested and such sample(s) are retained for 30 days only.

Attention: To check the authenticity of testing/inspection report & certificate, please contact us at telephone: (86-755) 8307 1443, or email: [CN.Doccheck@sgs.com](mailto:CN.Doccheck@sgs.com)

South of No. 6 Plant, No. 1, Runsheng Road, Suzhou Industrial Park, Suzhou Area, China (Jiangsu) Pilot Free Trade Zone 215000  
中国·苏州·中国(江苏)自由贸易试验区苏州片区苏州工业园区润胜路1号的6号厂房南楼 邮编: 215000

t (86-512) 62992980 www.sgs.com.cn  
t (86-512) 62992980 sgs.china@sgs.com

## Modulation characteristics for SA

### Test Result

Band	SCS	Bandwidth	Modulation	Channel	RB Config	Result	Verdict
N14	15	10	DFT-PI2BPSK	M	Outer_Full	see graph	PASS
N14	15	10	DFT-QPSK	M	Outer_Full	see graph	PASS
N14	15	10	DFT-16QAM	M	Outer_Full	see graph	PASS
N14	15	10	DFT-64QAM	M	Outer_Full	see graph	PASS
N14	15	10	DFT-256QAM	M	Outer_Full	see graph	PASS
N14	15	10	CP-QPSK	M	Outer_Full	see graph	PASS
N14	15	10	CP-16QAM	M	Outer_Full	see graph	PASS
N14	15	10	CP-64QAM	M	Outer_Full	see graph	PASS
N14	15	10	CP-256QAM	M	Outer_Full	see graph	PASS



Unless otherwise agreed in writing, this document is issued by the Company subject to its General Conditions of Service printed overleaf, available on request or accessible at <http://www.sgs.com/en/Terms-and-Conditions.aspx> and, for electronic format documents, subject to Terms and Conditions for Electronic Documents at <http://www.sgs.com/en/Terms-and-Conditions/Terms-e-Documents.aspx>. Attention is drawn to the limitation of liability, indemnification and jurisdiction issues defined therein. Any holder of this document is advised that information contained hereon reflects the Company's findings at the time of its intervention only and within the limits of Client's instructions, if any. The Company's sole responsibility is to its Client and this document does not exonerate parties to a transaction from exercising all their rights and obligations under the transaction documents. This document cannot be reproduced except in full, without prior written approval of the Company. Any unauthorized alteration, forgery or falsification of the content or appearance of this document is unlawful and offenders may be prosecuted to the fullest extent of the law. Unless otherwise stated the results shown in this test report refer only to the sample(s) tested and such sample(s) are retained for 30 days only.

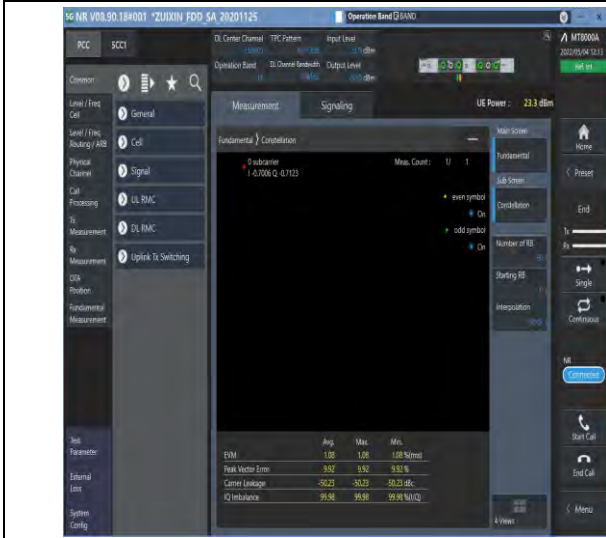
Attention: To check the authenticity of testing/inspection report & certificate, please contact us at telephone: (86-755) 8307 1443, or email: [CN.Doccheck@sgs.com](mailto:CN.Doccheck@sgs.com)

South of No. 6 Plant, No. 1, Pansheng Road, Suzhou Industrial Park, Suzhou Area, China (Jiangsu) Pilot Free Trade Zone 215000  
 中国·苏州·中国(江苏)自由贸易试验区苏州片区苏州工业园区海胜路1号的6号厂房南楼 邮编: 215000

t (86-512) 62992980 www.sgs.com.cn  
 t (86-512) 62992980 sgs.china@sgs.com



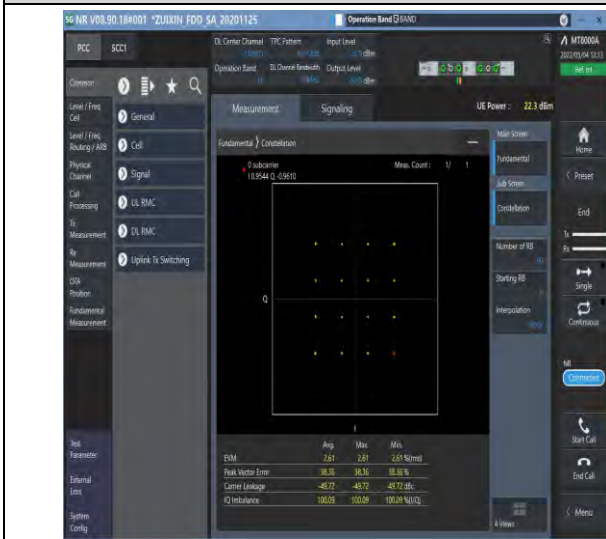
Test Graphs



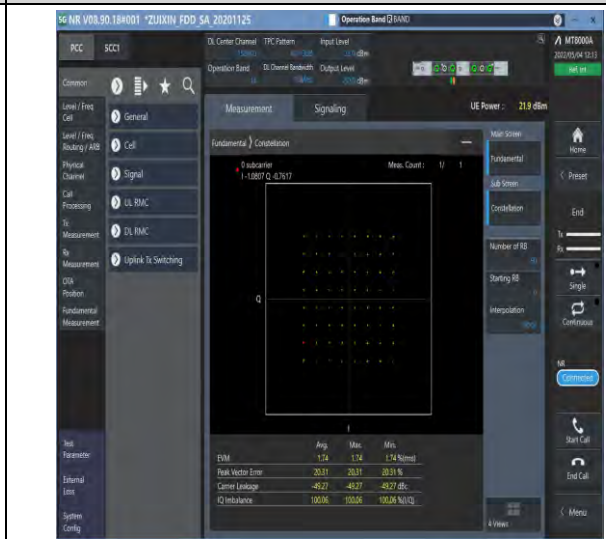
1-N14-PC3-15-10-M-1-DFT-PI2BPSK-Outer\_Full-50  
 @0-Ant1-see graph-PASS



1-N14-PC3-15-10-M-2-DFT-QPSK-Outer\_Full-50@  
 0-Ant1-see graph-PASS



1-N14-PC3-15-10-M-3-DFT-16QAM-Outer\_Full-50@  
 0-Ant1-see graph-PASS



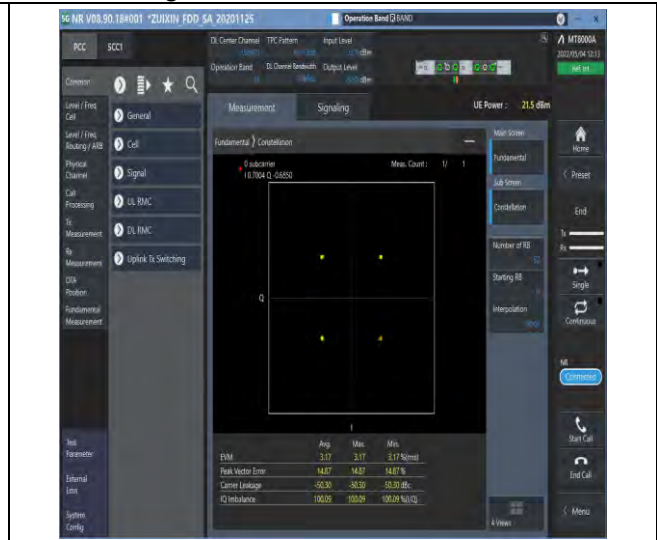
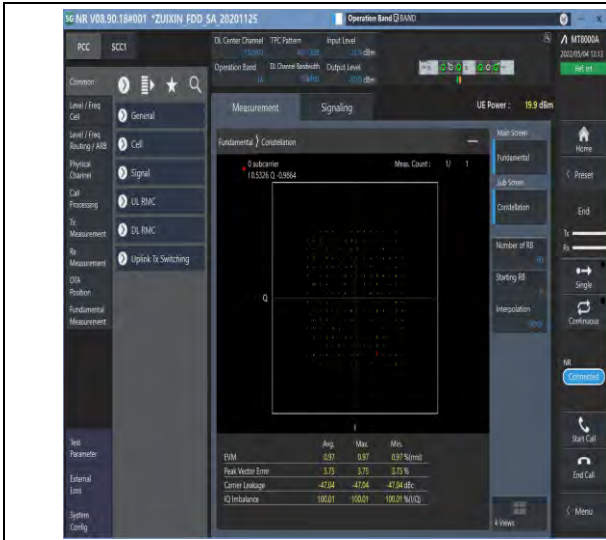
1-N14-PC3-15-10-M-4-DFT-64QAM-Outer\_Full-50  
 @0-Ant1-see graph-PASS



Unless otherwise agreed in writing, this document is issued by the Company subject to its General Conditions of Service printed overleaf, available on request or accessible at <http://www.sgs.com/en/Terms-and-Conditions.aspx> and, for electronic format documents, subject to Terms and Conditions for Electronic Documents at <http://www.sgs.com/en/Terms-and-Conditions/Terms-e-Documents.aspx>. Attention is drawn to the limitation of liability, indemnification and jurisdiction issues defined therein. Any holder of this document is advised that information contained hereon reflects the Company's findings at the time of its intervention only and within the limits of Client's instructions, if any. The Company's sole responsibility is to its Client and this document does not exonerate parties to a transaction from exercising all their rights and obligations under the transaction documents. This document cannot be reproduced except in full, without prior written approval of the Company. Any unauthorized alteration, forgery or falsification of the content or appearance of this document is unlawful and offenders may be prosecuted to the fullest extent of the law. Unless otherwise stated the results shown in this test report refer only to the sample(s) tested and such sample(s) are retained for 30 days only.  
**Attention: To check the authenticity of testing/inspection report & certificate, please contact us at telephone: (86-755) 8307 1443, or email: CN.Doccheck@sgs.com**

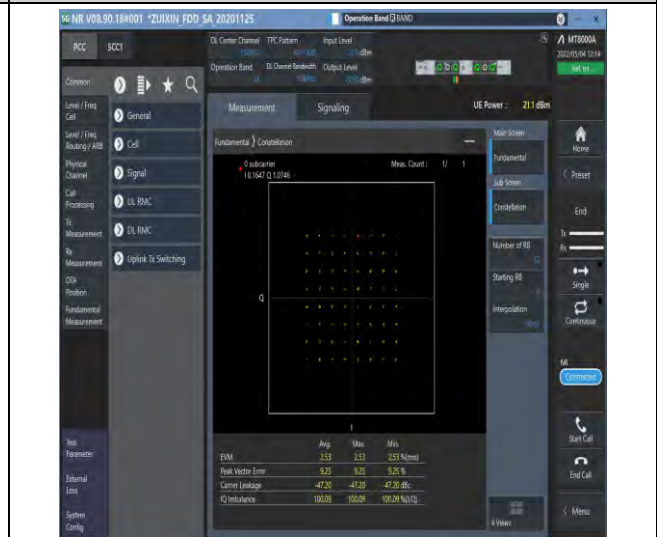
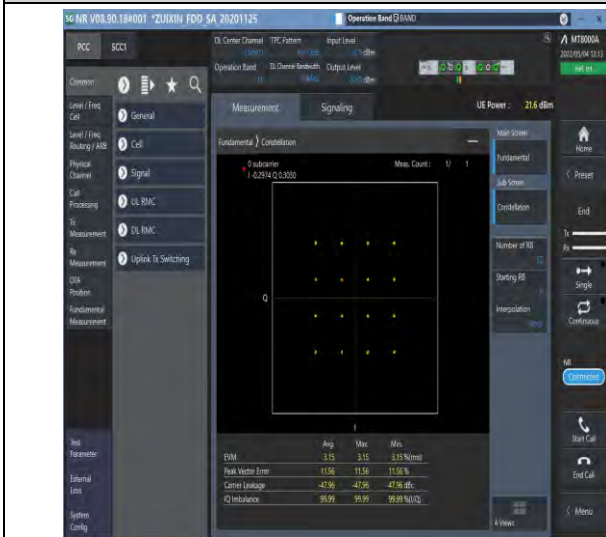
South of No. 6 Plant, No. 1, Runsheng Road, Suzhou Industrial Park, Suzhou Area, China (Jiangsu) Pilot Free Trade Zone 215000  
 中国·苏州·中国(江苏)自由贸易试验区苏州片区苏州工业园区润胜路1号的6号厂房南座 邮编: 215000

t (86-512) 62992980 www.sgs.com.cn  
 t (86-512) 62992980 sgs.china@sgs.com



1-N14-PC3-15-10-M-5-DFT-256QAM-Outer\_Full-50 @0-Ant1-see graph-PASS

1-N14-PC3-15-10-M-6-CP-QPSK-Outer\_Full-52@0-Ant1-see graph-PASS



1-N14-PC3-15-10-M-7-CP-16QAM-Outer\_Full-52@0-Ant1-see graph-PASS

1-N14-PC3-15-10-M-8-CP-64QAM-Outer\_Full-52@0-Ant1-see graph-PASS

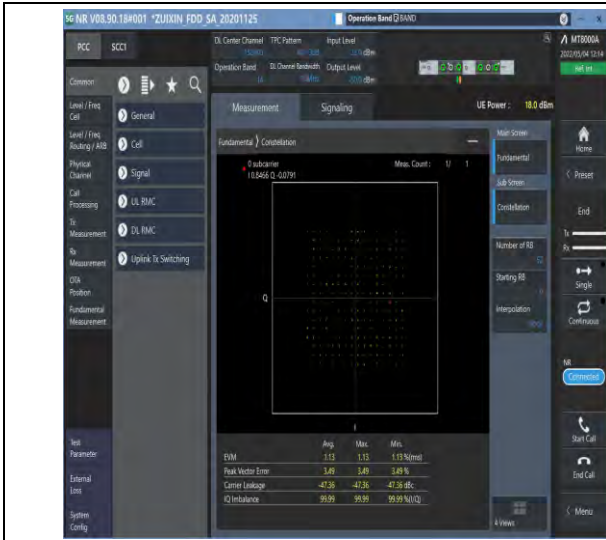


Unless otherwise agreed in writing, this document is issued by the Company subject to its General Conditions of Service printed overleaf, available on request or accessible at <http://www.sgs.com/en/Terms-and-Conditions.aspx> and, for electronic format documents, subject to Terms and Conditions for Electronic Documents at <http://www.sgs.com/en/Terms-and-Conditions/Terms-e-Documents.aspx>. Attention is drawn to the limitation of liability, indemnification and jurisdiction issues defined therein. Any holder of this document is advised that information contained hereon reflects the Company's findings at the time of its intervention only and within the limits of Client's instructions, if any. The Company's sole responsibility is to its Client and this document does not exonerate parties to a transaction from exercising all their rights and obligations under the transaction documents. This document cannot be reproduced except in full, without prior written approval of the Company. Any unauthorized alteration, forgery or falsification of the content or appearance of this document is unlawful and offenders may be prosecuted to the fullest extent of the law. Unless otherwise stated the results shown in this test report refer only to the sample(s) tested and such sample(s) are retained for 30 days only.

Attention: To check the authenticity of testing/inspection report & certificate, please contact us at telephone: (86-755) 8307 1443, or email: [CN.Doccheck@sgs.com](mailto:CN.Doccheck@sgs.com)

South of No. 6 Plant, No. 1, Pansheng Road, Suzhou Industrial Park, Suzhou Area, China (Jiangsu) Pilot Free Trade Zone 215000  
 中国·苏州·中国(江苏)自由贸易试验区苏州片区苏州工业园区海胜路1号的6号厂房南座 邮编: 215000

t (86-512) 62992980 www.sgs.com.cn  
 t (86-512) 62992980 sgs.china@sgs.com



1-N14-PC3-15-10-M-9-CP-256QAM-Outer\_Full-52@  
0-Ant1-see graph-PASS



Unless otherwise agreed in writing, this document is issued by the Company subject to its General Conditions of Service printed overleaf, available on request or accessible at <http://www.sgs.com/en/Terms-and-Conditions.aspx> and, for electronic format documents, subject to Terms and Conditions for Electronic Documents at <http://www.sgs.com/en/Terms-and-Conditions/Terms-e-Documents.aspx>. Attention is drawn to the limitation of liability, indemnification and jurisdiction issues defined therein. Any holder of this document is advised that information contained hereon reflects the Company's findings at the time of its intervention only and within the limits of Client's instructions, if any. The Company's sole responsibility is to its Client and this document does not exonerate parties to a transaction from exercising all their rights and obligations under the transaction documents. This document cannot be reproduced except in full, without prior written approval of the Company. Any unauthorized alteration, forgery or falsification of the content or appearance of this document is unlawful and offenders may be prosecuted to the fullest extent of the law. Unless otherwise stated the results shown in this test report refer only to the sample(s) tested and such sample(s) are retained for 30 days only.  
**Attention: To check the authenticity of testing/inspection report & certificate, please contact us at telephone: (86-755) 8307 1443, or email: CN.Doccheck@sgs.com**

South of No. 6 Plant, No. 1, Runsheng Road, Suzhou Industrial Park, Suzhou Area, China (Jiangsu) Pilot Free Trade Zone 215000  
中国·苏州·中国(江苏)自由贸易试验区苏州片区苏州工业园区润胜路1号的6号厂房南座 邮编: 215000

t (86-512) 62992980 www.sgs.com.cn  
t (86-512) 62992980 sgs.china@sgs.com



## 26dB Bandwidth and Occupied Bandwidth for SA

### Test Result

Band	SCS	Bandwidth	Modulation	Channel	RB Config	Result (99%)	Result (26dB)	Verdict
N14	15	5	DFT-QPSK	L	Outer_Full	4.486	4.990	PASS
N14	15	5	DFT-PI2BPSK	L	Outer_Full	4.474	5.100	PASS
N14	15	5	DFT-16QAM	L	Outer_Full	4.476	5.060	PASS
N14	15	5	DFT-64QAM	L	Outer_Full	4.482	5.090	PASS
N14	15	5	DFT-256QAM	L	Outer_Full	4.482	5.110	PASS
N14	15	5	CP-QPSK	L	Outer_Full	4.47	5.060	PASS
N14	15	5	CP-16QAM	L	Outer_Full	4.494	5.190	PASS
N14	15	5	CP-64QAM	L	Outer_Full	4.495	5.240	PASS
N14	15	5	CP-256QAM	L	Outer_Full	4.491	5.160	PASS
N14	15	5	DFT-QPSK	M	Outer_Full	4.483	5.010	PASS
N14	15	5	DFT-PI2BPSK	M	Outer_Full	4.493	5.160	PASS
N14	15	5	DFT-16QAM	M	Outer_Full	4.485	5.080	PASS
N14	15	5	DFT-64QAM	M	Outer_Full	4.49	5.170	PASS
N14	15	5	DFT-256QAM	M	Outer_Full	4.492	5.140	PASS
N14	15	5	CP-QPSK	M	Outer_Full	4.483	5.180	PASS
N14	15	5	CP-16QAM	M	Outer_Full	4.479	5.090	PASS
N14	15	5	CP-64QAM	M	Outer_Full	4.483	5.200	PASS
N14	15	5	CP-256QAM	M	Outer_Full	4.501	5.250	PASS
N14	15	5	DFT-QPSK	H	Outer_Full	4.472	4.930	PASS
N14	15	5	DFT-PI2BPSK	H	Outer_Full	4.493	5.160	PASS
N14	15	5	DFT-16QAM	H	Outer_Full	4.472	5.050	PASS
N14	15	5	DFT-64QAM	H	Outer_Full	4.476	5.110	PASS
N14	15	5	DFT-256QAM	H	Outer_Full	4.473	5.050	PASS
N14	15	5	CP-QPSK	H	Outer_Full	4.486	5.190	PASS
N14	15	5	CP-16QAM	H	Outer_Full	4.484	5.160	PASS
N14	15	5	CP-64QAM	H	Outer_Full	4.485	5.160	PASS
N14	15	5	CP-256QAM	H	Outer_Full	4.487	5.150	PASS
N14	15	10	DFT-QPSK	L	Outer_Full	8.96	9.740	PASS
N14	15	10	DFT-PI2BPSK	L	Outer_Full	8.963	9.740	PASS
N14	15	10	DFT-16QAM	L	Outer_Full	8.956	9.620	PASS
N14	15	10	DFT-64QAM	L	Outer_Full	8.946	9.780	PASS
N14	15	10	DFT-256QAM	L	Outer_Full	8.947	9.640	PASS



Unless otherwise agreed in writing, this document is issued by the Company subject to its General Conditions of Service printed overleaf, available on request or accessible at <http://www.sgs.com/en/Terms-and-Conditions.aspx> and, for electronic format documents, subject to Terms and Conditions for Electronic Documents at <http://www.sgs.com/en/Terms-and-Conditions/Terms-e-Documents.aspx>. Attention is drawn to the limitation of liability, indemnification and jurisdiction issues defined therein. Any holder of this document is advised that information contained hereon reflects the Company's findings at the time of its intervention only and within the limits of Client's instructions, if any. The Company's sole responsibility is to its Client and this document does not exonerate parties to a transaction from exercising all their rights and obligations under the transaction documents. This document cannot be reproduced except in full, without prior written approval of the Company. Any unauthorized alteration, forgery or falsification of the content or appearance of this document is unlawful and offenders may be prosecuted to the fullest extent of the law. Unless otherwise stated the results shown in this test report refer only to the sample(s) tested and such sample(s) are retained for 30 days only.

Attention: To check the authenticity of testing/inspection report & certificate, please contact us at telephone: (86-755) 8307 1443, or email: [CN.Doccheck@sgs.com](mailto:CN.Doccheck@sgs.com)

South of No. 6 Plant, No. 1, Pansheng Road, Suzhou Industrial Park, Suzhou Area, China (Jiangsu) Pilot Free Trade Zone 215000  
 中国·苏州·中国(江苏)自由贸易试验区苏州片区苏州工业园区海胜路1号的6号厂房南楼 邮编: 215000

t (86-512) 62992980 www.sgs.com.cn  
 t (86-512) 62992980 sgs.china@sgs.com





Report No.: SEWA2204000008RG02

Rev.: 01

Page: 13 of 42

N14	15	10	CP-QPSK	L	Outer_Full	9.314	10.240	PASS
N14	15	10	CP-16QAM	L	Outer_Full	9.294	10.180	PASS
N14	15	10	CP-64QAM	L	Outer_Full	9.319	10.280	PASS
N14	15	10	CP-256QAM	L	Outer_Full	9.317	10.180	PASS
N14	15	10	DFT-QPSK	M	Outer_Full	8.955	9.740	PASS
N14	15	10	DFT-PI2BPSK	M	Outer_Full	8.958	9.740	PASS
N14	15	10	DFT-16QAM	M	Outer_Full	8.957	9.580	PASS
N14	15	10	DFT-64QAM	M	Outer_Full	8.947	9.780	PASS
N14	15	10	DFT-256QAM	M	Outer_Full	8.948	9.640	PASS
N14	15	10	CP-QPSK	M	Outer_Full	9.312	10.200	PASS
N14	15	10	CP-16QAM	M	Outer_Full	9.293	10.140	PASS
N14	15	10	CP-64QAM	M	Outer_Full	9.307	10.260	PASS
N14	15	10	CP-256QAM	M	Outer_Full	9.317	10.180	PASS
N14	15	10	DFT-QPSK	H	Outer_Full	8.954	9.740	PASS
N14	15	10	DFT-PI2BPSK	H	Outer_Full	8.951	9.860	PASS
N14	15	10	DFT-16QAM	H	Outer_Full	8.958	9.620	PASS
N14	15	10	DFT-64QAM	H	Outer_Full	8.945	9.760	PASS
N14	15	10	DFT-256QAM	H	Outer_Full	8.947	9.640	PASS
N14	15	10	CP-QPSK	H	Outer_Full	9.316	10.240	PASS
N14	15	10	CP-16QAM	H	Outer_Full	9.293	10.140	PASS
N14	15	10	CP-64QAM	H	Outer_Full	9.323	10.280	PASS
N14	15	10	CP-256QAM	H	Outer_Full	9.317	10.180	PASS

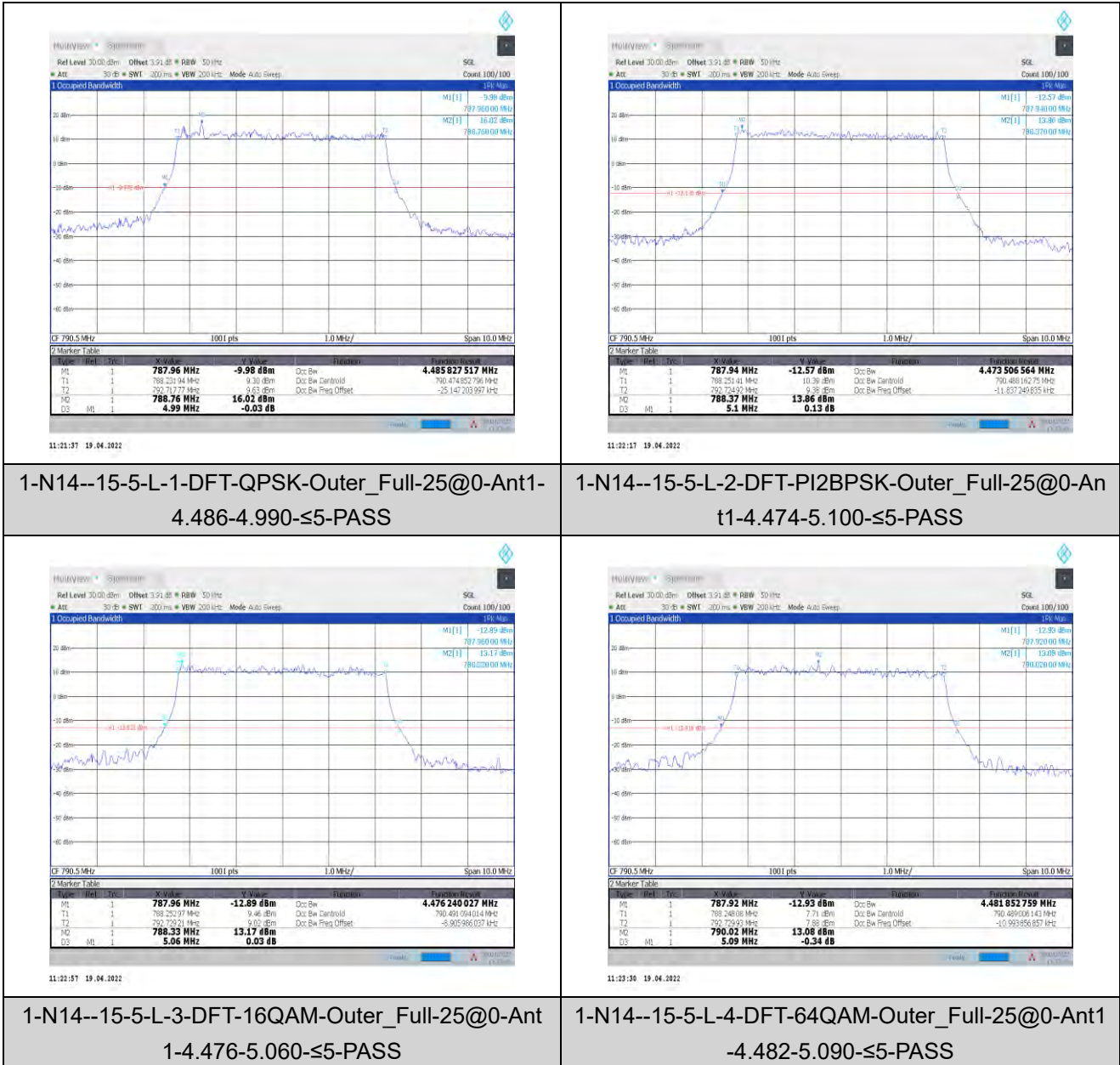


Unless otherwise agreed in writing, this document is issued by the Company subject to its General Conditions of Service printed overleaf, available on request or accessible at <http://www.sgs.com/en/Terms-and-Conditions.aspx> and, for electronic format documents, subject to Terms and Conditions for Electronic Documents at <http://www.sgs.com/en/Terms-and-Conditions/Terms-e-Documents.aspx>. Attention is drawn to the limitation of liability, indemnification and jurisdiction issues defined therein. Any holder of this document is advised that information contained hereon reflects the Company's findings at the time of its intervention only and within the limits of Client's instructions, if any. The Company's sole responsibility is to its Client and this document does not exonerate parties to a transaction from exercising all their rights and obligations under the transaction documents. This document cannot be reproduced except in full, without prior written approval of the Company. Any unauthorized alteration, forgery or falsification of the content or appearance of this document is unlawful and offenders may be prosecuted to the fullest extent of the law. Unless otherwise stated the results shown in this test report refer only to the sample(s) tested and such sample(s) are retained for 30 days only.  
**Attention: To check the authenticity of testing/inspection report & certificate, please contact us at telephone: (86-755) 8307 1443, or email: CN.Doccheck@sgs.com**

South of No. 6 Plant, No. 1, Pansheng Road, Suzhou Industrial Park, Suzhou Area, China (Jiangsu) Pilot Free Trade Zone 215000  
 中国·苏州·中国(江苏)自由贸易试验区苏州片区苏州工业园区海胜路1号的6号厂房南楼 邮编: 215000

t (86-512) 62992980 www.sgs.com.cn  
 t (86-512) 62992980 sgs.china@sgs.com

Test Graphs



Unless otherwise agreed in writing, this document is issued by the Company subject to its General Conditions of Service printed overleaf, available on request or accessible at <http://www.sgs.com/en/Terms-and-Conditions.aspx> and, for electronic format documents, subject to Terms and Conditions for Electronic Documents at <http://www.sgs.com/en/Terms-and-Conditions/Terms-e-Documents.aspx>. Attention is drawn to the limitation of liability, indemnification and jurisdiction issues defined therein. Any holder of this document is advised that information contained hereon reflects the Company's findings at the time of its intervention only and within the limits of Client's instructions, if any. The Company's sole responsibility is to its Client and this document does not exonerate parties to a transaction from exercising all their rights and obligations under the transaction documents. This document cannot be reproduced except in full, without prior written approval of the Company. Any unauthorized alteration, forgery or falsification of the content or appearance of this document is unlawful and offenders may be prosecuted to the fullest extent of the law. Unless otherwise stated the results shown in this test report refer only to the sample(s) tested and such sample(s) are retained for 30 days only.  
**Attention: To check the authenticity of testing/inspection report & certificate, please contact us at telephone: (86-755) 8307 1443, or email: CN.Doccheck@sgs.com**  
 South of No. 6 Plant, No. 1, Pansheng Road, Suzhou Industrial Park, Suzhou Area, China (Jiangsu) Pilot Free Trade Zone 215000 t (86-512) 62992980 www.sgs.com.cn  
 中国·苏州·中国(江苏)自由贸易试验区苏州片区苏州工业园区海陵路1号的6号厂房南座 邮编: 215000 t (86-512) 62992980 sgs.china@sgs.com



1-N14--15-5-L-5-DFT-256QAM-Outer\_Full-25@0-Ant1-4.482-5.110-≤5-PASS



1-N14--15-5-L-6-CP-QPSK-Outer\_Full-25@0-Ant1-4.47-5.060-≤5-PASS



1-N14--15-5-L-7-CP-16QAM-Outer\_Full-25@0-Ant1-4.494-5.190-≤5-PASS



1-N14--15-5-L-8-CP-64QAM-Outer\_Full-25@0-Ant1-4.495-5.240-≤5-PASS

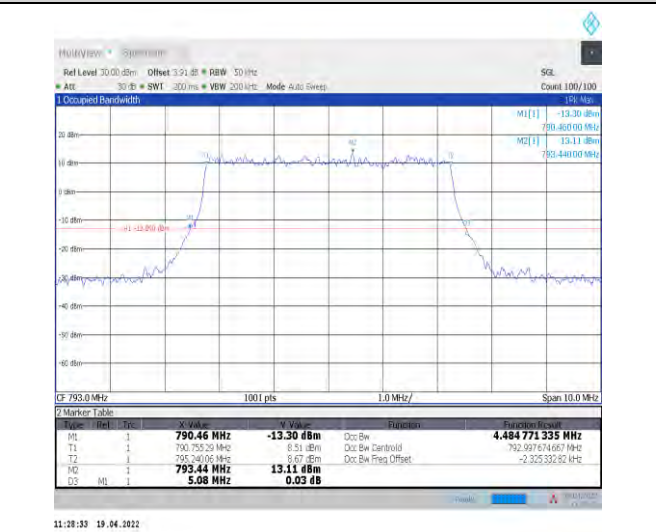






1-N14--15-5-L-9-CP-256QAM-Outer\_Full-25@0-Ant  
1-4.491-5.160-≤5-PASS

1-N14--15-5-M-1-DFT-QPSK-Outer\_Full-25@0-Ant1-  
4.483-5.010-≤5-PASS



1-N14--15-5-M-2-DFT-PI2BPSK-Outer\_Full-25@0-A  
nt1-4.493-5.160-≤5-PASS

1-N14--15-5-M-3-DFT-16QAM-Outer\_Full-25@0-Ant  
1-4.485-5.080-≤5-PASS



Unless otherwise agreed in writing, this document is issued by the Company subject to its General Conditions of Service printed overleaf, available on request or accessible at <http://www.sgs.com/en/Terms-and-Conditions.aspx> and, for electronic format documents, subject to Terms and Conditions for Electronic Documents at <http://www.sgs.com/en/Terms-and-Conditions/Terms-e-Documents.aspx>. Attention is drawn to the limitation of liability, indemnification and jurisdiction issues defined therein. Any holder of this document is advised that information contained hereon reflects the Company's findings at the time of its intervention only and within the limits of Client's instructions, if any. The Company's sole responsibility is to its Client and this document does not exonerate parties to a transaction from exercising all their rights and obligations under the transaction documents. This document cannot be reproduced except in full, without prior written approval of the Company. Any unauthorized alteration, forgery or falsification of the content or appearance of this document is unlawful and offenders may be prosecuted to the fullest extent of the law. Unless otherwise stated the results shown in this test report refer only to the sample(s) tested and such sample(s) are retained for 30 days only.

Attention: To check the authenticity of testing/inspection report & certificate, please contact us at telephone: (86-755) 8307 1443, or email: [CN.Doccheck@sgs.com](mailto:CN.Doccheck@sgs.com)

South of No. 6 Plant, No. 1, Pansheng Road, Suzhou Industrial Park, Suzhou Area, China (Jiangsu) Pilot Free Trade Zone 215000 t (86-512) 62992980 www.sgs.com.cn  
中国·苏州·中国(江苏)自由贸易试验区苏州片区苏州工业园区海胜路1号的6号厂房南座 邮编: 215000 t (86-512) 62992980 sgs.china@sgs.com





1-N14--15-5-M-4-DFT-64QAM-Outer\_Full-25@0-Ant  
 1-4.49-5.170-≤5-PASS



1-N14--15-5-M-5-DFT-256QAM-Outer\_Full-25@0-An  
 t1-4.492-5.140-≤5-PASS



1-N14--15-5-M-6-CP-QPSK-Outer\_Full-25@0-Ant1  
 4.483-5.180-≤5-PASS



1-N14--15-5-M-7-CP-16QAM-Outer\_Full-25@0-Ant1  
 -4.479-5.090-≤5-PASS

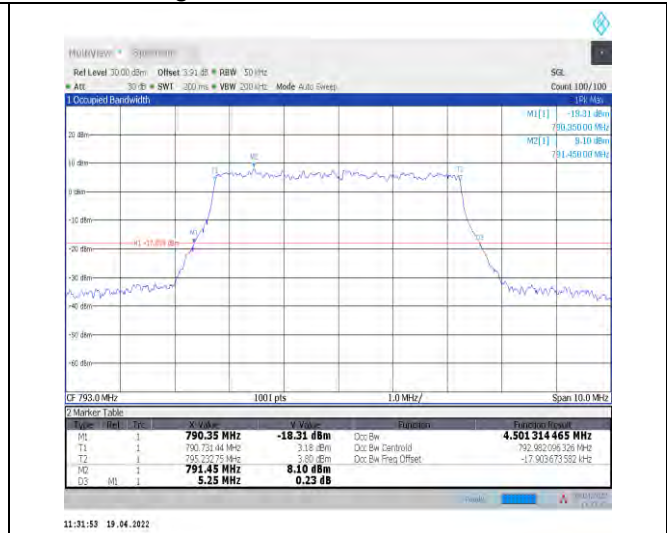


Unless otherwise agreed in writing, this document is issued by the Company subject to its General Conditions of Service printed overleaf, available on request or accessible at <http://www.sgs.com/en/Terms-and-Conditions.aspx> and, for electronic format documents, subject to Terms and Conditions for Electronic Documents at <http://www.sgs.com/en/Terms-and-Conditions/Terms-e-Documents.aspx>. Attention is drawn to the limitation of liability, indemnification and jurisdiction issues defined therein. Any holder of this document is advised that information contained hereon reflects the Company's findings at the time of its intervention only and within the limits of Client's instructions, if any. The Company's sole responsibility is to its Client and this document does not exonerate parties to a transaction from exercising all their rights and obligations under the transaction documents. This document cannot be reproduced except in full, without prior written approval of the Company. Any unauthorized alteration, forgery or falsification of the content or appearance of this document is unlawful and offenders may be prosecuted to the fullest extent of the law. Unless otherwise stated the results shown in this test report refer only to the sample(s) tested and such sample(s) are retained for 30 days only.  
**Attention: To check the authenticity of testing/inspection report & certificate, please contact us at telephone: (86-755) 8307 1443, or email: CN.Doccheck@sgs.com**

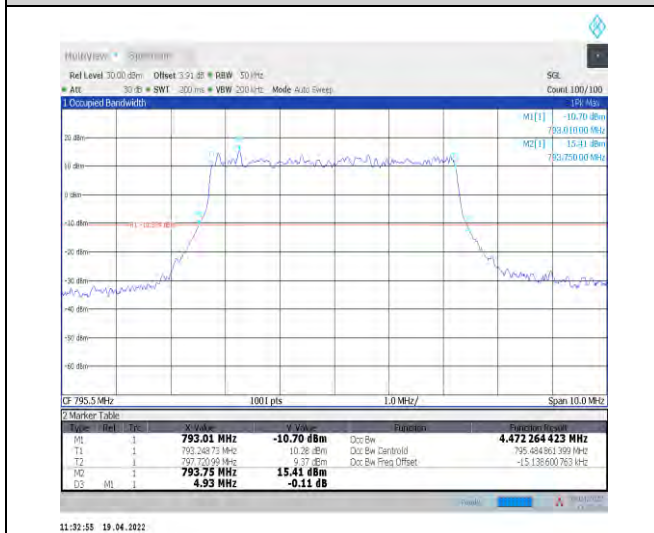
South of No. 6 Plant, No. 1, Pulinsheng Road, Suzhou Industrial Park, Suzhou Area, China (Jiangsu) Pilot Free Trade Zone 215000 t (86-512) 62992980 www.sgs.com.cn  
 中国·苏州·中国(江苏)自由贸易试验区苏州片区苏州工业园区海陵路1号的6号厂房南楼 邮编: 215000 t (86-512) 62992980 sgs.china@sgs.com



1-N14--15-5-M-8-CP-64QAM-Outer\_Full-25@0-Ant1  
-4.483-5.200-≤5-PASS



1-N14--15-5-M-9-CP-256QAM-Outer\_Full-25@0-Ant  
1-4.501-5.250-≤5-PASS



1-N14--15-5-H-1-DFT-QPSK-Outer\_Full-25@0-Ant1-  
4.472-4.930-≤5-PASS



1-N14--15-5-H-2-DFT-PI2BPSK-Outer\_Full-25@0-A  
nt1-4.493-5.160-≤5-PASS



Unless otherwise agreed in writing, this document is issued by the Company subject to its General Conditions of Service printed overleaf, available on request or accessible at <http://www.sgs.com/en/Terms-and-Conditions.aspx> and, for electronic format documents, subject to Terms and Conditions for Electronic Documents at <http://www.sgs.com/en/Terms-and-Conditions/Terms-e-Documents.aspx>. Attention is drawn to the limitation of liability, indemnification and jurisdiction issues defined therein. Any holder of this document is advised that information contained hereon reflects the Company's findings at the time of its intervention only and within the limits of Client's instructions, if any. The Company's sole responsibility is to its Client and this document does not exonerate parties to a transaction from exercising all their rights and obligations under the transaction documents. This document cannot be reproduced except in full, without prior written approval of the Company. Any unauthorized alteration, forgery or falsification of the content or appearance of this document is unlawful and offenders may be prosecuted to the fullest extent of the law. Unless otherwise stated the results shown in this test report refer only to the sample(s) tested and such sample(s) are retained for 30 days only.

Attention: To check the authenticity of testing/inspection report & certificate, please contact us at telephone: (86-755) 8307 1443, or email: [CN.Doccheck@sgs.com](mailto:CN.Doccheck@sgs.com)

South of No. 6 Plant, No. 1, Pulinsheng Road, Suzhou Industrial Park, Suzhou Area, China (Jiangsu) Pilot Free Trade Zone 215000 t (86-512) 62992980 www.sgs.com.cn  
中国·苏州·中国(江苏)自由贸易试验区苏州片区苏州工业园区海胜路1号的6号厂房南座 邮编: 215000 t (86-512) 62992980 sgs.china@sgs.com





1-N14--15-5-H-3-DFT-16QAM-Outer\_Full-25@0-Ant  
1-4.472-5.050-≤5-PASS

1-N14--15-5-H-4-DFT-64QAM-Outer\_Full-25@0-Ant  
1-4.476-5.110-≤5-PASS



1-N14--15-5-H-5-DFT-256QAM-Outer\_Full-25@0-Ant  
t1-4.473-5.050-≤5-PASS

1-N14--15-5-H-6-CP-QPSK-Outer\_Full-25@0-Ant1-4  
.486-5.190-≤5-PASS



Unless otherwise agreed in writing, this document is issued by the Company subject to its General Conditions of Service printed overleaf, available on request or accessible at <http://www.sgs.com/en/Terms-and-Conditions.aspx> and, for electronic format documents, subject to Terms and Conditions for Electronic Documents at <http://www.sgs.com/en/Terms-and-Conditions/Terms-e-Documents.aspx>. Attention is drawn to the limitation of liability, indemnification and jurisdiction issues defined therein. Any holder of this document is advised that information contained hereon reflects the Company's findings at the time of its intervention only and within the limits of Client's instructions, if any. The Company's sole responsibility is to its Client and this document does not exonerate parties to a transaction from exercising all their rights and obligations under the transaction documents. This document cannot be reproduced except in full, without prior written approval of the Company. Any unauthorized alteration, forgery or falsification of the content or appearance of this document is unlawful and offenders may be prosecuted to the fullest extent of the law. Unless otherwise stated the results shown in this test report refer only to the sample(s) tested and such sample(s) are retained for 30 days only.

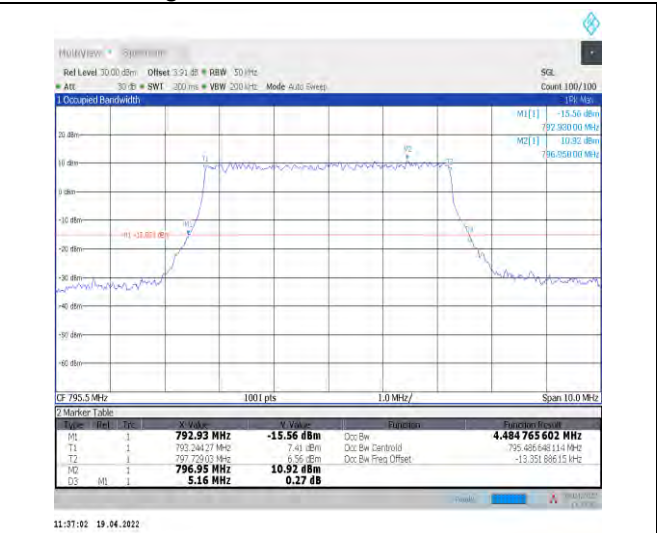
Attention: To check the authenticity of testing/inspection report & certificate, please contact us at telephone: (86-755) 8307 1443, or email: [CN.Doccheck@sgs.com](mailto:CN.Doccheck@sgs.com)

South of No. 6 Plant, No. 1, Pulinsheng Road, Suzhou Industrial Park, Suzhou Area, China (Jiangsu) Pilot Free Trade Zone 215000  
中国·苏州·中国(江苏)自由贸易试验区苏州片区苏州工业园区海胜路1号的6号厂房南座 邮编: 215000

t (86-512) 62992980 www.sgs.com.cn  
t (86-512) 62992980 sgs.china@sgs.com



1-N14--15-5-H-7-CP-16QAM-Outer\_Full-25@0-Ant1  
-4.484-5.160-≤5-PASS



1-N14--15-5-H-8-CP-64QAM-Outer\_Full-25@0-Ant1  
4.485-5.160-≤5-PASS



1-N14--15-5-H-9-CP-256QAM-Outer\_Full-25@0-Ant  
1-4.487-5.150-≤5-PASS



1-N14--15-10-L-1-DFT-QPSK-Outer\_Full-50@0-Ant1  
-8.96-9.740-≤10-PASS



Unless otherwise agreed in writing, this document is issued by the Company subject to its General Conditions of Service printed overleaf, available on request or accessible at <http://www.sgs.com/en/Terms-and-Conditions.aspx> and, for electronic format documents, subject to Terms and Conditions for Electronic Documents at <http://www.sgs.com/en/Terms-and-Conditions/Terms-e-Documents.aspx>. Attention is drawn to the limitation of liability, indemnification and jurisdiction issues defined therein. Any holder of this document is advised that information contained hereon reflects the Company's findings at the time of its intervention only and within the limits of Client's instructions, if any. The Company's sole responsibility is to its Client and this document does not exonerate parties to a transaction from exercising all their rights and obligations under the transaction documents. This document cannot be reproduced except in full, without prior written approval of the Company. Any unauthorized alteration, forgery or falsification of the content or appearance of this document is unlawful and offenders may be prosecuted to the fullest extent of the law. Unless otherwise stated the results shown in this test report refer only to the sample(s) tested and such sample(s) are retained for 30 days only.

Attention: To check the authenticity of testing/inspection report & certificate, please contact us at telephone: (86-755) 8307 1443, or email: [CN.Doccheck@sgs.com](mailto:CN.Doccheck@sgs.com)

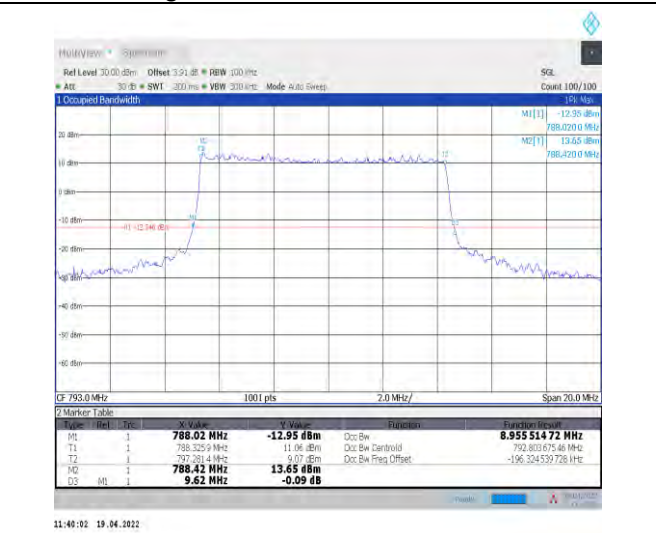
South of No. 6 Plant, No. 1, Pulinsheng Road, Suzhou Industrial Park, Suzhou Area, China (Jiangsu) Pilot Free Trade Zone 215000  
中国·苏州·中国(江苏)自由贸易试验区苏州片区苏州工业园区海陵路1号的6号厂房南座 邮编: 215000

t (86-512) 62992980 www.sgs.com.cn  
t (86-512) 62992980 sgs.china@sgs.com





1-N14--15-10-L-2-DFT-PI2BPSK-Outer\_Full-50@0-A  
nt1-8.963-9.740-≤10-PASS



1-N14--15-10-L-3-DFT-16QAM-Outer\_Full-50@0-Ant  
1-8.956-9.620-≤10-PASS



1-N14--15-10-L-4-DFT-64QAM-Outer\_Full-50@0-An  
t1-8.946-9.780-≤10-PASS



1-N14--15-10-L-5-DFT-256QAM-Outer\_Full-50@0-A  
nt1-8.947-9.640-≤10-PASS



Unless otherwise agreed in writing, this document is issued by the Company subject to its General Conditions of Service printed overleaf, available on request or accessible at <http://www.sgs.com/en/Terms-and-Conditions.aspx> and, for electronic format documents, subject to Terms and Conditions for Electronic Documents at <http://www.sgs.com/en/Terms-and-Conditions/Terms-e-Documents.aspx>. Attention is drawn to the limitation of liability, indemnification and jurisdiction issues defined therein. Any holder of this document is advised that information contained hereon reflects the Company's findings at the time of its intervention only and within the limits of Client's instructions, if any. The Company's sole responsibility is to its Client and this document does not exonerate parties to a transaction from exercising all their rights and obligations under the transaction documents. This document cannot be reproduced except in full, without prior written approval of the Company. Any unauthorized alteration, forgery or falsification of the content or appearance of this document is unlawful and offenders may be prosecuted to the fullest extent of the law. Unless otherwise stated the results shown in this test report refer only to the sample(s) tested and such sample(s) are retained for 30 days only.

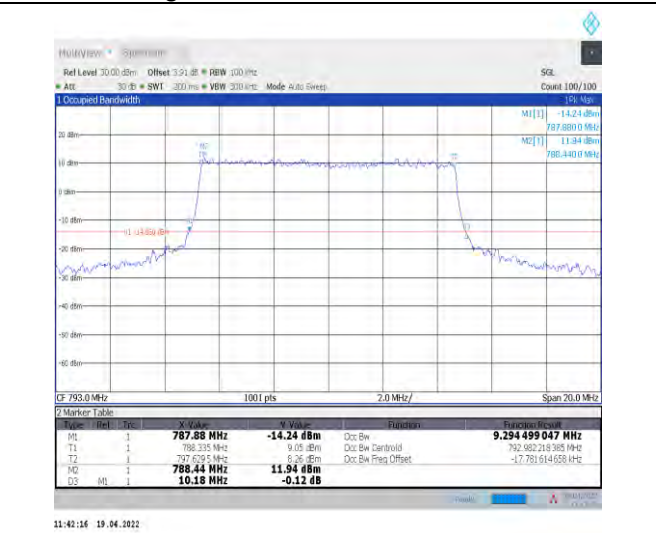
Attention: To check the authenticity of testing/inspection report & certificate, please contact us at telephone: (86-755) 8307 1443, or email: [CN.Doccheck@sgs.com](mailto:CN.Doccheck@sgs.com)

South of No. 6 Plant, No. 1, Pansheng Road, Suzhou Industrial Park, Suzhou Area, China (Jiangsu) Pilot Free Trade Zone 215000  
中国·苏州·中国(江苏)自由贸易试验区苏州片区苏州工业园区海胜路1号的6号厂房南座 邮编: 215000

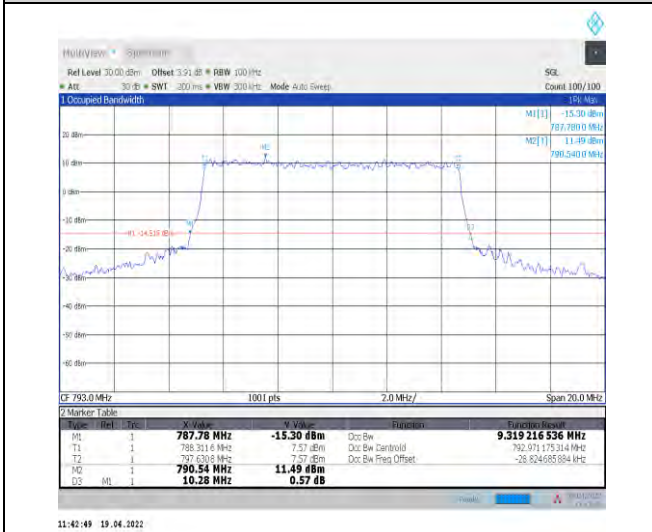
t (86-512) 62992980 www.sgs.com.cn  
t (86-512) 62992980 sgs.china@sgs.com



1-N14--15-10-L-6-CP-QPSK-Outer\_Full-52@0-Ant1-9.314-10.240-≤10-PASS



1-N14--15-10-L-7-CP-16QAM-Outer\_Full-52@0-Ant1-9.294-10.180-≤10-PASS



1-N14--15-10-L-8-CP-64QAM-Outer\_Full-52@0-Ant1-9.319-10.280-≤10-PASS



1-N14--15-10-L-9-CP-256QAM-Outer\_Full-52@0-Ant1-9.317-10.180-≤10-PASS



Unless otherwise agreed in writing, this document is issued by the Company subject to its General Conditions of Service printed overleaf, available on request or accessible at <http://www.sgs.com/en/Terms-and-Conditions.aspx> and, for electronic format documents, subject to Terms and Conditions for Electronic Documents at <http://www.sgs.com/en/Terms-and-Conditions/Terms-e-Documents.aspx>. Attention is drawn to the limitation of liability, indemnification and jurisdiction issues defined therein. Any holder of this document is advised that information contained hereon reflects the Company's findings at the time of its intervention only and within the limits of Client's instructions, if any. The Company's sole responsibility is to its Client and this document does not exonerate parties to a transaction from exercising all their rights and obligations under the transaction documents. This document cannot be reproduced except in full, without prior written approval of the Company. Any unauthorized alteration, forgery or falsification of the content or appearance of this document is unlawful and offenders may be prosecuted to the fullest extent of the law. Unless otherwise stated the results shown in this test report refer only to the sample(s) tested and such sample(s) are retained for 30 days only.

Attention: To check the authenticity of testing/inspection report & certificate, please contact us at telephone: (86-755) 8307 1443, or email: [CN.Doccheck@sgs.com](mailto:CN.Doccheck@sgs.com)

South of No. 6 Plant, No. 1, Pansheng Road, Suzhou Industrial Park, Suzhou Area, China (Jiangsu) Pilot Free Trade Zone 215000  
 中国·苏州·中国(江苏)自由贸易试验区苏州片区苏州工业园区海胜路1号的6号厂房南座 邮编: 215000

t (86-512) 62992980 www.sgs.com.cn  
 t (86-512) 62992980 sgs.china@sgs.com

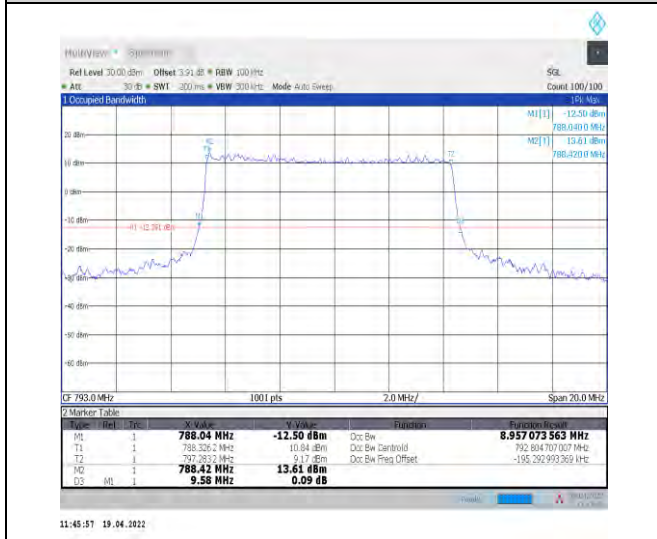




1-N14--15-10-M-1-DFT-QPSK-Outer\_Full-50@0-Ant  
 1-8.955-9.740-≤10-PASS



1-N14--15-10-M-2-DFT-PI2BPSK-Outer\_Full-50@0-Ant1-8.958-9.740-≤10-PASS



1-N14--15-10-M-3-DFT-16QAM-Outer\_Full-50@0-Ant1-8.957-9.580-≤10-PASS

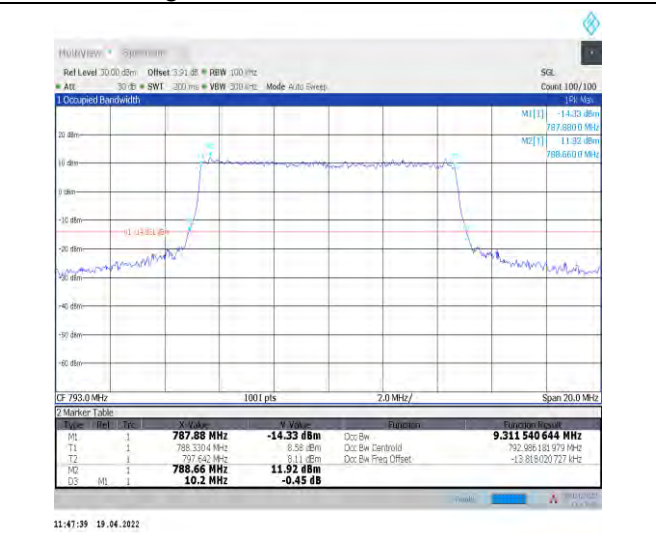


1-N14--15-10-M-4-DFT-64QAM-Outer\_Full-50@0-Ant1-8.947-9.780-≤10-PASS



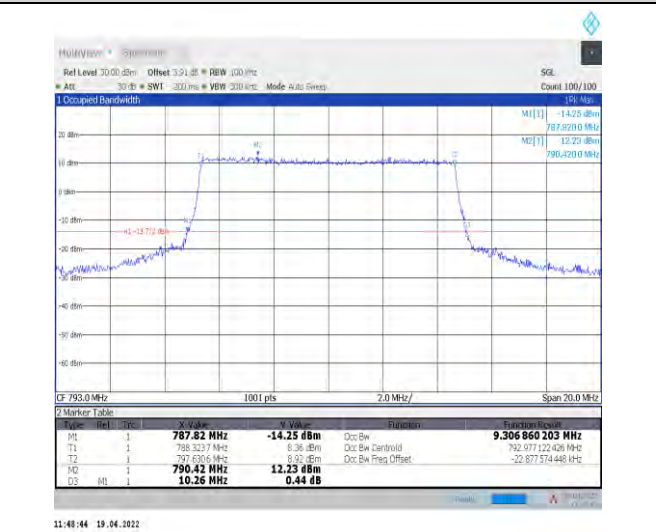
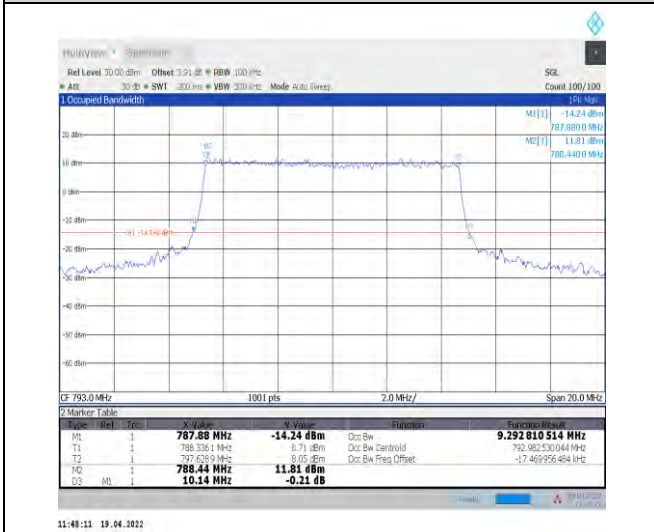
Unless otherwise agreed in writing, this document is issued by the Company subject to its General Conditions of Service printed overleaf, available on request or accessible at <http://www.sgs.com/en/Terms-and-Conditions.aspx> and, for electronic format documents, subject to Terms and Conditions for Electronic Documents at <http://www.sgs.com/en/Terms-and-Conditions/Terms-e-Documents.aspx>. Attention is drawn to the limitation of liability, indemnification and jurisdiction issues defined therein. Any holder of this document is advised that information contained hereon reflects the Company's findings at the time of its intervention only and within the limits of Client's instructions, if any. The Company's sole responsibility is to its Client and this document does not exonerate parties to a transaction from exercising all their rights and obligations under the transaction documents. This document cannot be reproduced except in full, without prior written approval of the Company. Any unauthorized alteration, forgery or falsification of the content or appearance of this document is unlawful and offenders may be prosecuted to the fullest extent of the law. Unless otherwise stated the results shown in this test report refer only to the sample(s) tested and such sample(s) are retained for 30 days only.  
**Attention:** To check the authenticity of testing/inspection report & certificate, please contact us at telephone: (86-755) 8307 1443, or email: [CN.Doccheck@sgs.com](mailto:CN.Doccheck@sgs.com)  
 South of No. 6 Plant, No. 1, Pansheng Road, Suzhou Industrial Park, Suzhou Area, China (Jiangsu) Pilot Free Trade Zone 215000 t (86-512) 62992980 www.sgs.com.cn  
 中国·苏州·中国(江苏)自由贸易试验区苏州片区苏州工业园区海澄路1号的6号厂房南座 邮编: 215000 t (86-512) 62992980 sgs.china@sgs.com





1-N14--15-10-M-5-DFT-256QAM-Outer\_Full-50@0-Ant1-8.948-9.640-≤10-PASS

1-N14--15-10-M-6-CP-QPSK-Outer\_Full-52@0-Ant1-9.312-10.200-≤10-PASS



1-N14--15-10-M-7-CP-16QAM-Outer\_Full-52@0-Ant1-9.293-10.140-≤10-PASS

1-N14--15-10-M-8-CP-64QAM-Outer\_Full-52@0-Ant1-9.307-10.260-≤10-PASS



Unless otherwise agreed in writing, this document is issued by the Company subject to its General Conditions of Service printed overleaf, available on request or accessible at <http://www.sgs.com/en/Terms-and-Conditions.aspx> and, for electronic format documents, subject to Terms and Conditions for Electronic Documents at <http://www.sgs.com/en/Terms-and-Conditions/Terms-e-Documents.aspx>. Attention is drawn to the limitation of liability, indemnification and jurisdiction issues defined therein. Any holder of this document is advised that information contained hereon reflects the Company's findings at the time of its intervention only and within the limits of Client's instructions, if any. The Company's sole responsibility is to its Client and this document does not exonerate parties to a transaction from exercising all their rights and obligations under the transaction documents. This document cannot be reproduced except in full, without prior written approval of the Company. Any unauthorized alteration, forgery or falsification of the content or appearance of this document is unlawful and offenders may be prosecuted to the fullest extent of the law. Unless otherwise stated the results shown in this test report refer only to the sample(s) tested and such sample(s) are retained for 30 days only.

**Attention:** To check the authenticity of testing/inspection report & certificate, please contact us at telephone: (86-755) 8307 1443, or email: [CN.Doccheck@sgs.com](mailto:CN.Doccheck@sgs.com)

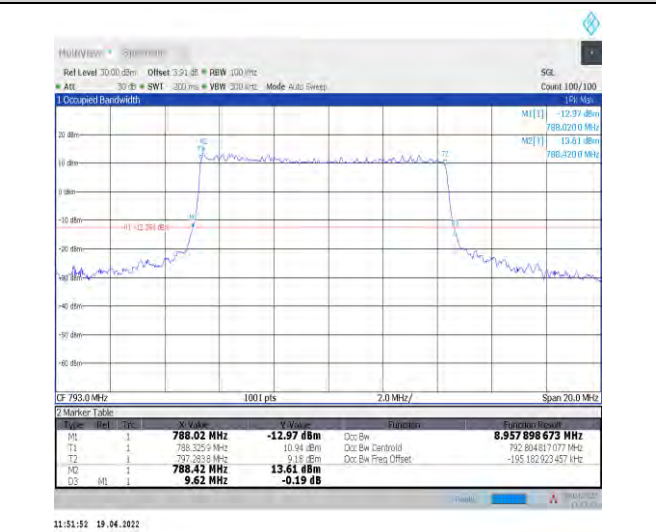
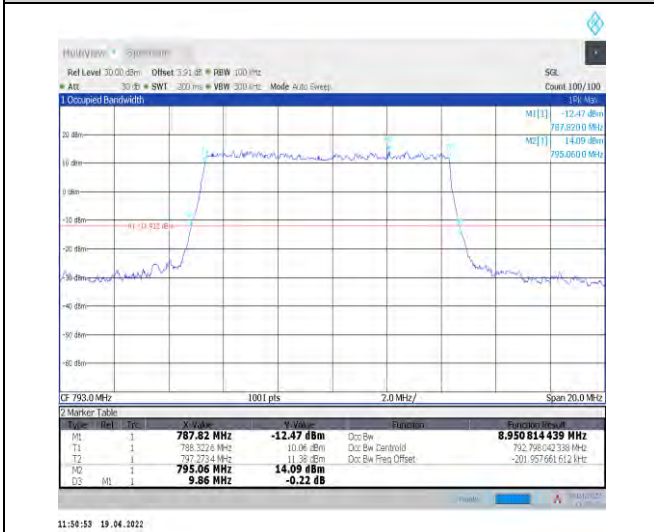
South of No. 6 Plant, No. 1, Pulinsheng Road, Suzhou Industrial Park, Suzhou Area, China (Jiangsu) Pilot Free Trade Zone 215000  
 中国·苏州·中国(江苏)自由贸易试验区苏州片区苏州工业园区海陵路1号的6号厂房南座 邮编: 215000

t (86-512) 62992980 www.sgs.com.cn  
 t (86-512) 62992980 sgs.china@sgs.com



1-N14--15-10-M-9-CP-256QAM-Outer\_Full-52@0-A  
nt1-9.317-10.180-≤10-PASS

1-N14--15-10-H-1-DFT-QPSK-Outer\_Full-50@0-Ant  
1-8.954-9.740-≤10-PASS



1-N14--15-10-H-2-DFT-PI2BPSK-Outer\_Full-50@0-Ant1  
Ant1-8.951-9.860-≤10-PASS

1-N14--15-10-H-3-DFT-16QAM-Outer\_Full-50@0-Ant  
t1-8.958-9.620-≤10-PASS



Unless otherwise agreed in writing, this document is issued by the Company subject to its General Conditions of Service printed overleaf, available on request or accessible at <http://www.sgs.com/en/Terms-and-Conditions.aspx> and, for electronic format documents, subject to Terms and Conditions for Electronic Documents at <http://www.sgs.com/en/Terms-and-Conditions/Terms-e-Documents.aspx>. Attention is drawn to the limitation of liability, indemnification and jurisdiction issues defined therein. Any holder of this document is advised that information contained hereon reflects the Company's findings at the time of its intervention only and within the limits of Client's instructions, if any. The Company's sole responsibility is to its Client and this document does not exonerate parties to a transaction from exercising all their rights and obligations under the transaction documents. This document cannot be reproduced except in full, without prior written approval of the Company. Any unauthorized alteration, forgery or falsification of the content or appearance of this document is unlawful and offenders may be prosecuted to the fullest extent of the law. Unless otherwise stated the results shown in this test report refer only to the sample(s) tested and such sample(s) are retained for 30 days only.

Attention: To check the authenticity of testing/inspection report & certificate, please contact us at telephone: (86-755) 8307 1443, or email: [CN.Doccheck@sgs.com](mailto:CN.Doccheck@sgs.com)

South of No. 6 Plant, No. 1, Pansheng Road, Suzhou Industrial Park, Suzhou Area, China (Jiangsu) Pilot Free Trade Zone 215000 t (86-512) 62992980 www.sgs.com.cn  
中国·苏州·中国(江苏)自由贸易试验区苏州片区苏州工业园区海澄路1号的6号厂房南楼 邮编: 215000 t (86-512) 62992980 sgs.china@sgs.com

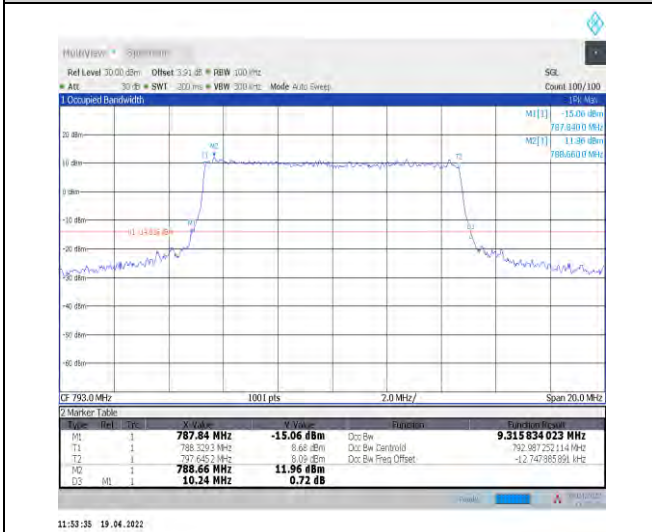




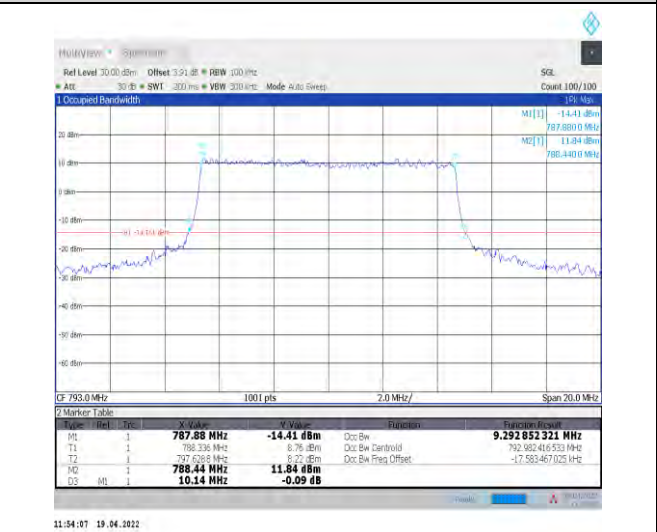
1-N14--15-10-H-4-DFT-64QAM-Outer\_Full-50@0-An  
t1-8.945-9.760-<=10-PASS



1-N14--15-10-H-5-DFT-256QAM-Outer\_Full-50@0-A  
nt1-8.947-9.640-<=10-PASS



1-N14--15-10-H-6-CP-QPSK-Outer\_Full-52@0-Ant1-  
9.316-10.240-<=10-PASS



1-N14--15-10-H-7-CP-16QAM-Outer\_Full-52@0-Ant  
1-9.293-10.140-<=10-PASS



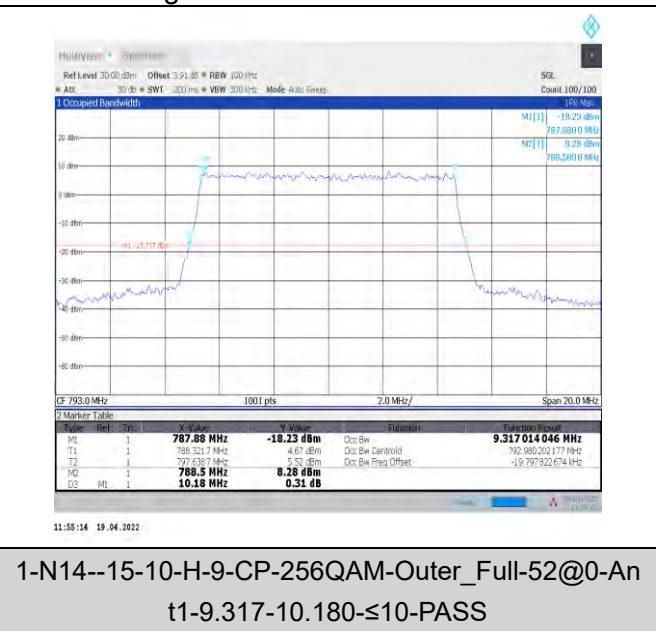
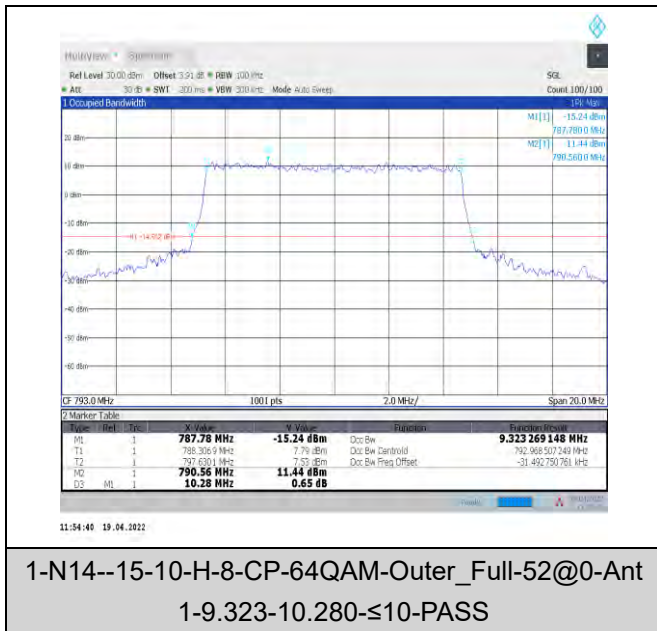
Unless otherwise agreed in writing, this document is issued by the Company subject to its General Conditions of Service printed overleaf, available on request or accessible at <http://www.sgs.com/en/Terms-and-Conditions.aspx> and, for electronic format documents, subject to Terms and Conditions for Electronic Documents at <http://www.sgs.com/en/Terms-and-Conditions/Terms-e-Documents.aspx>. Attention is drawn to the limitation of liability, indemnification and jurisdiction issues defined therein. Any holder of this document is advised that information contained hereon reflects the Company's findings at the time of its intervention only and within the limits of Client's instructions, if any. The Company's sole responsibility is to its Client and this document does not exonerate parties to a transaction from exercising all their rights and obligations under the transaction documents. This document cannot be reproduced except in full, without prior written approval of the Company. Any unauthorized alteration, forgery or falsification of the content or appearance of this document is unlawful and offenders may be prosecuted to the fullest extent of the law. Unless otherwise stated the results shown in this test report refer only to the sample(s) tested and such sample(s) are retained for 30 days only.

Attention: To check the authenticity of testing/inspection report & certificate, please contact us at telephone: (86-755) 8307 1443, or email: [CN.Doccheck@sgs.com](mailto:CN.Doccheck@sgs.com)

South of No. 6 Plant, No. 1, Pansheng Road, Suzhou Industrial Park, Suzhou Area, China (Jiangsu) Pilot Free Trade Zone 215000  
中国·苏州·中国(江苏)自由贸易试验区苏州片区苏州工业园区海胜路1号的6号厂房南座 邮编: 215000

t (86-512) 62992980 www.sgs.com.cn  
t (86-512) 62992980 sgs.china@sgs.com





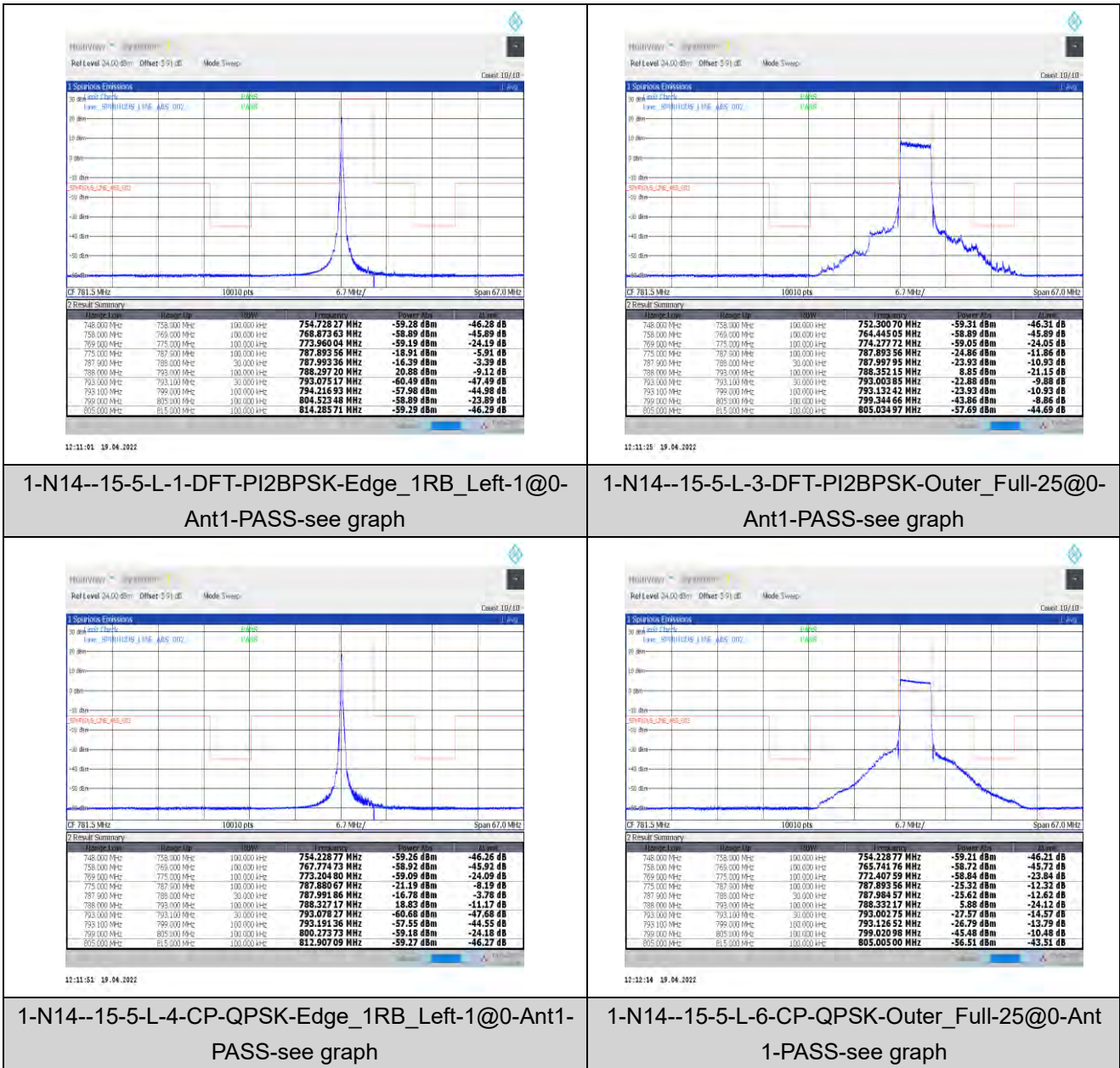
1-N14--15-10-H-8-CP-64QAM-Outer\_Full-52@0-Ant  
 1-9.323-10.280-≤10-PASS

1-N14--15-10-H-9-CP-256QAM-Outer\_Full-52@0-An  
 t1-9.317-10.180-≤10-PASS



### Band Edge for SA

### Test Graphs

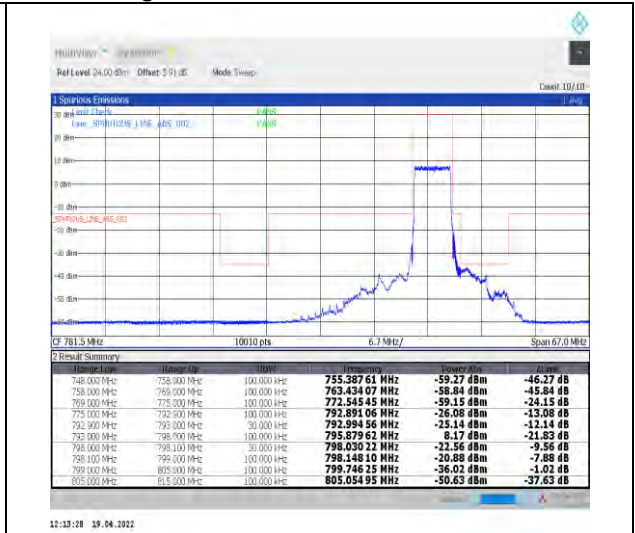
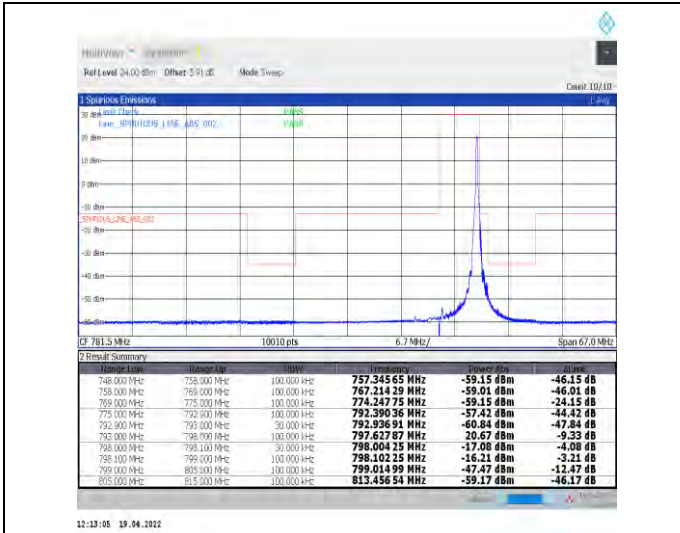


Unless otherwise agreed in writing, this document is issued by the Company subject to its General Conditions of Service printed overleaf, available on request or accessible at <http://www.sgs.com/en/Terms-and-Conditions.aspx> and, for electronic format documents, subject to Terms and Conditions for Electronic Documents at <http://www.sgs.com/en/Terms-and-Conditions/Terms-e-Documents.aspx>. Attention is drawn to the limitation of liability, indemnification and jurisdiction issues defined therein. Any holder of this document is advised that information contained hereon reflects the Company's findings at the time of its intervention only and within the limits of Client's instructions, if any. The Company's sole responsibility is to its Client and this document does not exonerate parties to a transaction from exercising all their rights and obligations under the transaction documents. This document cannot be reproduced except in full, without prior written approval of the Company. Any unauthorized alteration, forgery or falsification of the content or appearance of this document is unlawful and offenders may be prosecuted to the fullest extent of the law. Unless otherwise stated the results shown in this test report refer only to the sample(s) tested and such sample(s) are retained for 30 days only.

Attention: To check the authenticity of testing/inspection report & certificate, please contact us at telephone: (86-755) 8307 1443, or email: [CN.Doccheck@sgs.com](mailto:CN.Doccheck@sgs.com)

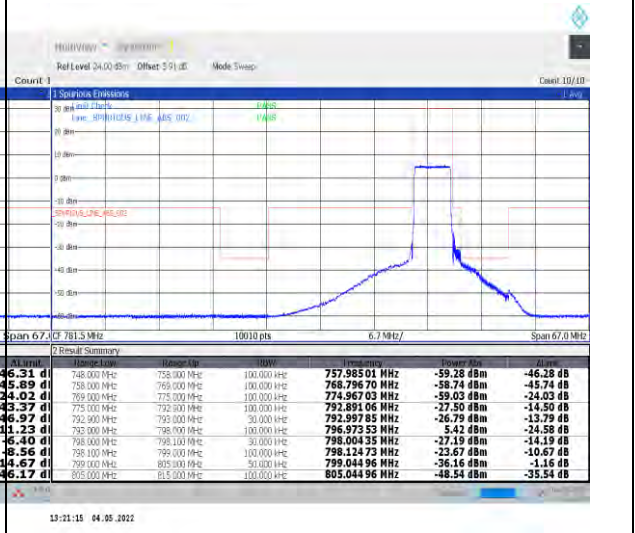
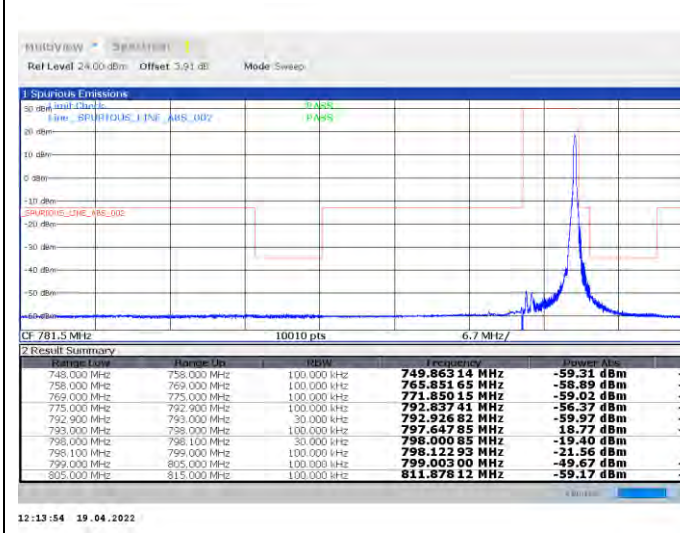
South of No. 6 Plant, No. 1, Runsheng Road, Suzhou Industrial Park, Suzhou Area, China (Jiangsu) Pilot Free Trade Zone 215000 t (86-512) 62992980 www.sgs.com.cn  
 中国·苏州·中国(江苏)自由贸易试验区苏州片区苏州工业园区润胜路1号厂房南楼 邮编: 215000 t (86-512) 62992980 sgs.china@sgs.com





1-N14--15-5-H-2-DFT-PI2BPSK-Edge\_1RB\_Right-1@2  
4-Ant1-PASS-see graph

1-N14--15-5-H-3-DFT-PI2BPSK-Outer\_Full-25@0  
-Ant1-PASS-see graph

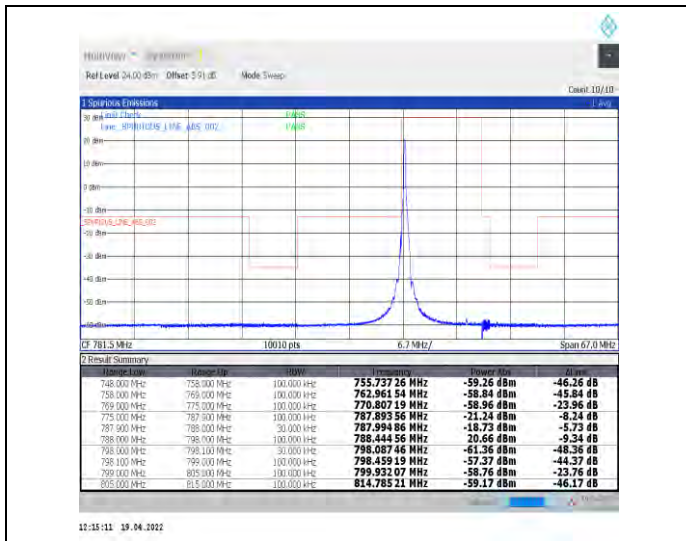


1-N14--15-5-H-5-CP-QPSK-Edge\_1RB\_Right-1@24-A  
nt1-PASS-see graph

1-N14--15-5-H-6-CP-QPSK-Outer\_Full-25@0-Ant  
1-PASS-see graph

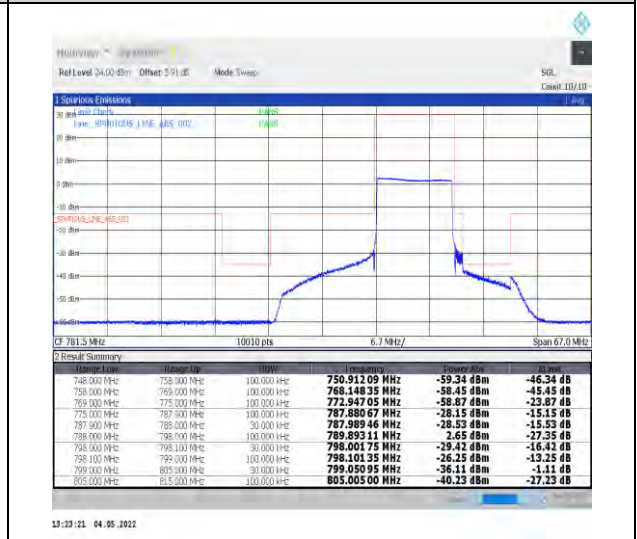
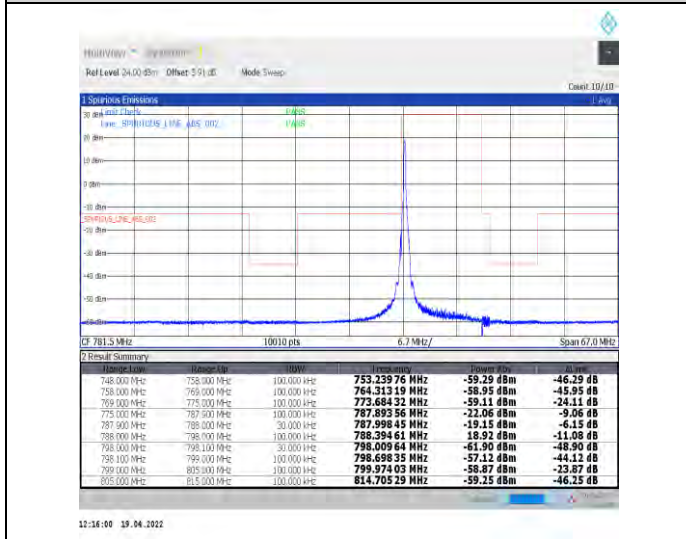






1-N14--15-10-L-1-DFT-PI2BPSK-Edge\_1RB\_Left-1@0-Ant1-PASS-see graph

1-N14--15-10-L-3-DFT-PI2BPSK-Outer\_Full-50@0-Ant1-PASS-see graph



1-N14--15-10-L-4-CP-QPSK-Edge\_1RB\_Left-1@0-Ant1-PASS-see graph

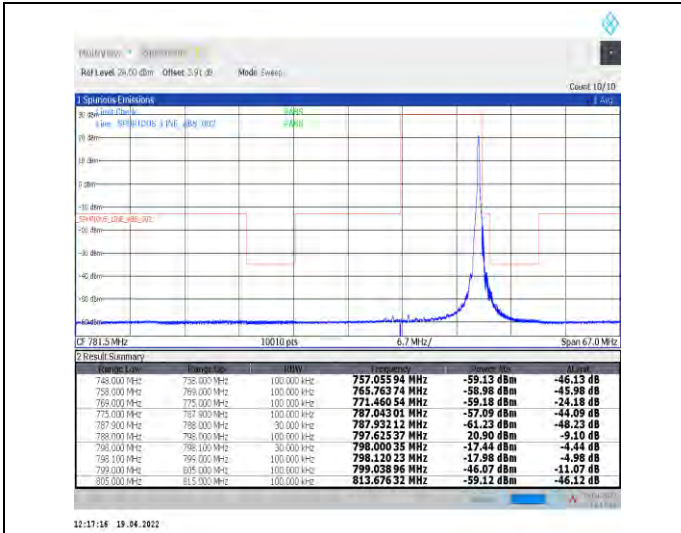
1-N14--15-10-L-6-CP-QPSK-Outer\_Full-52@0-Ant1-PASS-see graph



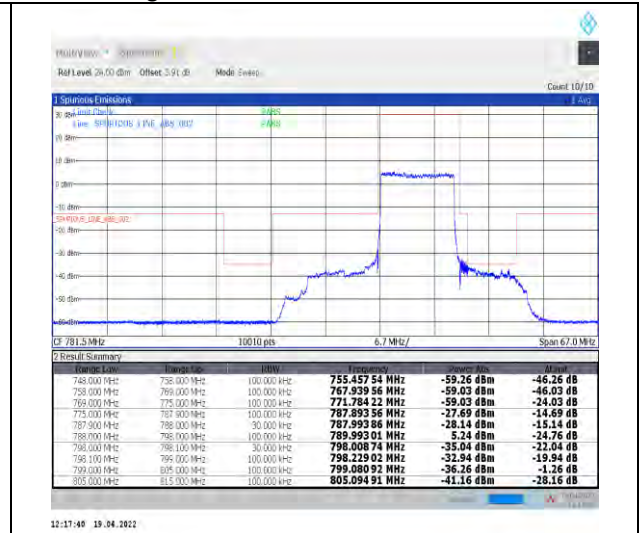
Unless otherwise agreed in writing, this document is issued by the Company subject to its General Conditions of Service printed overleaf, available on request or accessible at <http://www.sgs.com/en/Terms-and-Conditions.aspx> and, for electronic format documents, subject to Terms and Conditions for Electronic Documents at <http://www.sgs.com/en/Terms-and-Conditions/Terms-e-Documents.aspx>. Attention is drawn to the limitation of liability, indemnification and jurisdiction issues defined therein. Any holder of this document is advised that information contained hereon reflects the Company's findings at the time of its intervention only and within the limits of Client's instructions, if any. The Company's sole responsibility is to its Client and this document does not exonerate parties to a transaction from exercising all their rights and obligations under the transaction documents. This document cannot be reproduced except in full, without prior written approval of the Company. Any unauthorized alteration, forgery or falsification of the content or appearance of this document is unlawful and offenders may be prosecuted to the fullest extent of the law. Unless otherwise stated the results shown in this test report refer only to the sample(s) tested and such sample(s) are retained for 30 days only.

Attention: To check the authenticity of testing/inspection report & certificate, please contact us at telephone: (86-755) 8307 1443, or email: CN.Doccheck@sgs.com

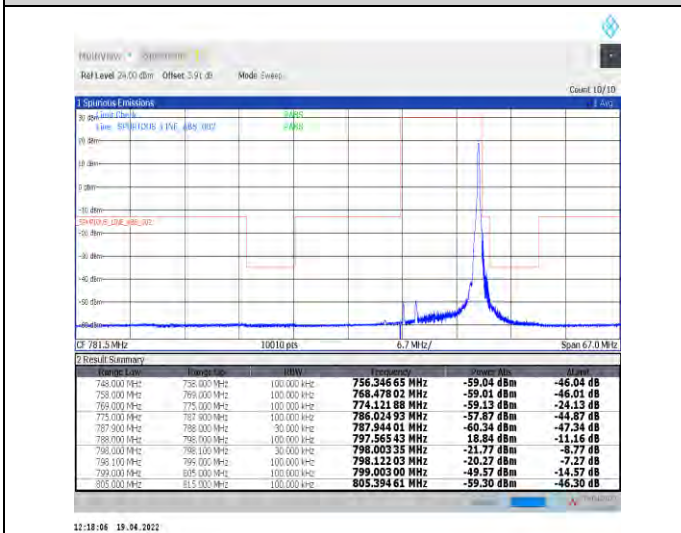
South of No. 6 Plant, No. 1, Pansheng Road, Suzhou Industrial Park, Suzhou Area, China (Jiangsu) Pilot Free Trade Zone 215000 t (86-512) 62992980 www.sgs.com.cn  
 中国·苏州·中国(江苏)自由贸易试验区苏州片区苏州工业园区海澄路1号的6号厂房南楼 邮编: 215000 t (86-512) 62992980 sgs.china@sgs.com



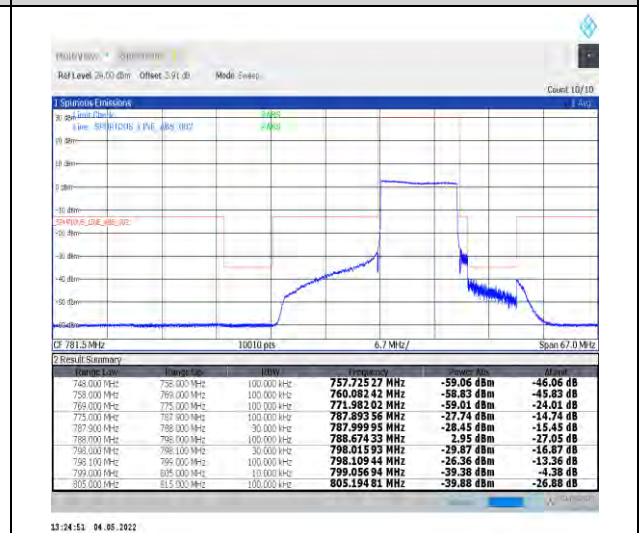
1-N14--15-10-H-2-DFT-PI2BPSK-Edge\_1RB\_Right-1@51-Ant1-PASS-see graph



1-N14--15-10-H-3-DFT-PI2BPSK-Outer\_Full-50@0-Ant1-PASS-see graph



1-N14--15-10-H-5-CP-QPSK-Edge\_1RB\_Right-1@51-Ant1-PASS-see graph



1-N14--15-10-H-6-CP-QPSK-Outer\_Full-52@0-Ant1-PASS-see graph



Unless otherwise agreed in writing, this document is issued by the Company subject to its General Conditions of Service printed overleaf, available on request or accessible at <http://www.sgs.com/en/Terms-and-Conditions.aspx> and, for electronic format documents, subject to Terms and Conditions for Electronic Documents at <http://www.sgs.com/en/Terms-and-Conditions/Terms-e-Documents.aspx>. Attention is drawn to the limitation of liability, indemnification and jurisdiction issues defined therein. Any holder of this document is advised that information contained hereon reflects the Company's findings at the time of its intervention only and within the limits of Client's instructions, if any. The Company's sole responsibility is to its Client and this document does not exonerate parties to a transaction from exercising all their rights and obligations under the transaction documents. This document cannot be reproduced except in full, without prior written approval of the Company. Any unauthorized alteration, forgery or falsification of the content or appearance of this document is unlawful and offenders may be prosecuted to the fullest extent of the law. Unless otherwise stated the results shown in this test report refer only to the sample(s) tested and such sample(s) are retained for 30 days only.

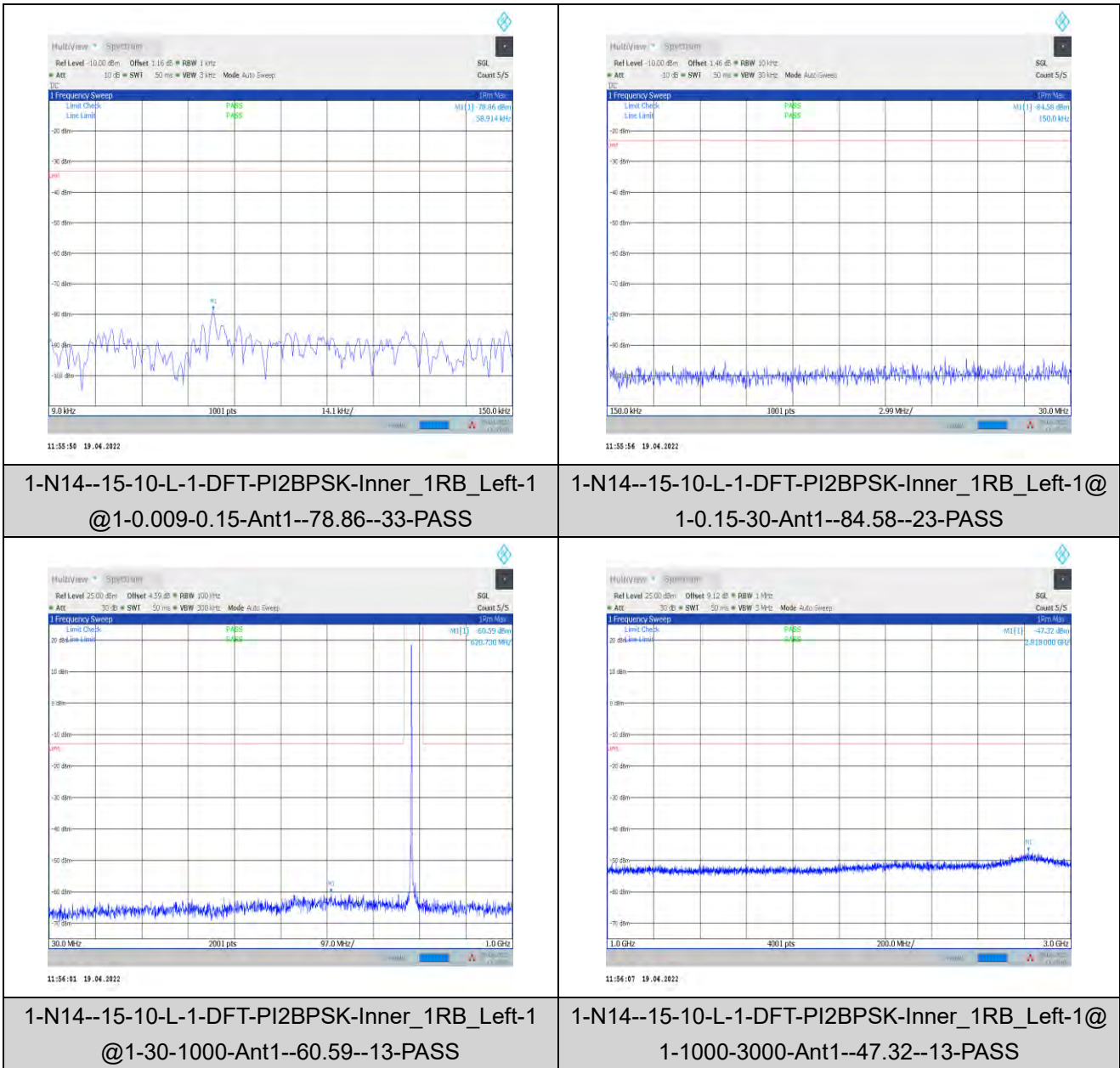
Attention: To check the authenticity of testing/inspection report & certificate, please contact us at telephone: (86-755) 8307 1443, or email: CN.Doccheck@sgs.com

South of No. 6 Plant, No. 1, Punsheng Road, Suzhou Industrial Park, Suzhou Area, China (Jiangsu) Pilot Free Trade Zone 215000 t (86-512) 62992980 www.sgs.com.cn  
 中国·苏州·中国(江苏)自由贸易试验区苏州片区苏州工业园区海胜路1号的6号厂房南楼 邮编: 215000 t (86-512) 62992980 sgs.china@sgs.com

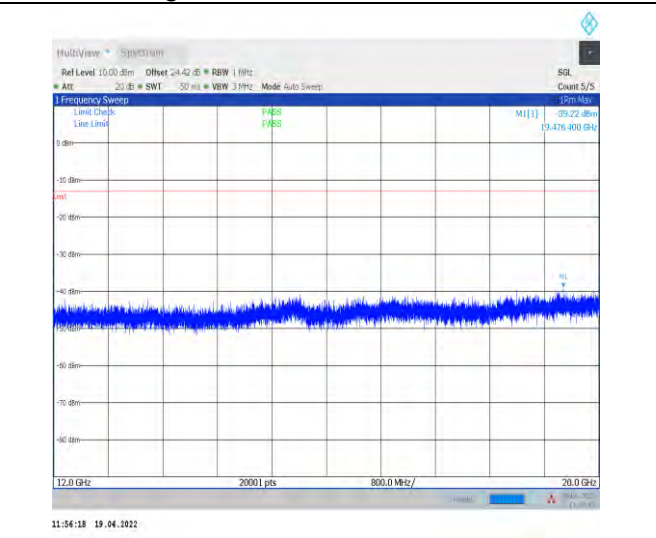
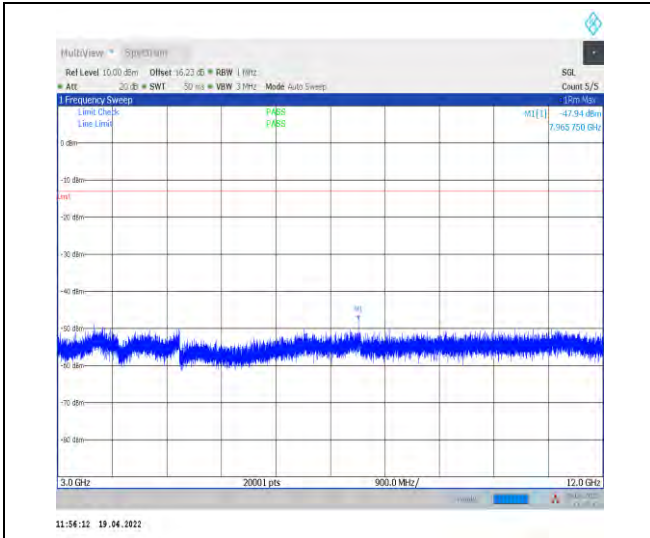


## Conducted Spurious Emission for SA

### Test Graphs

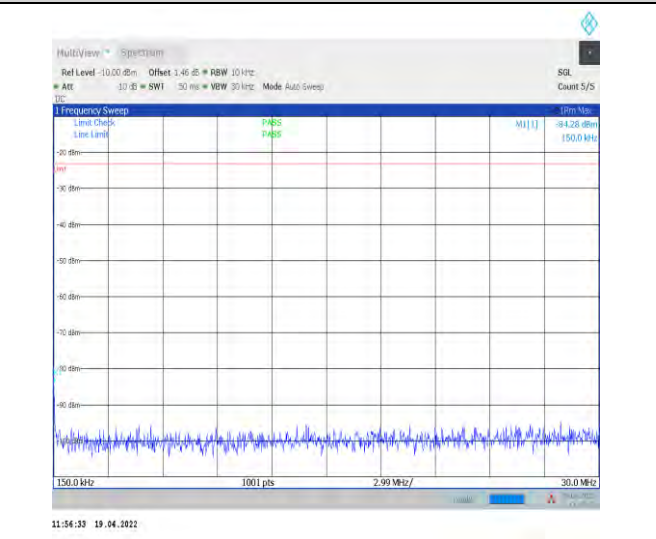
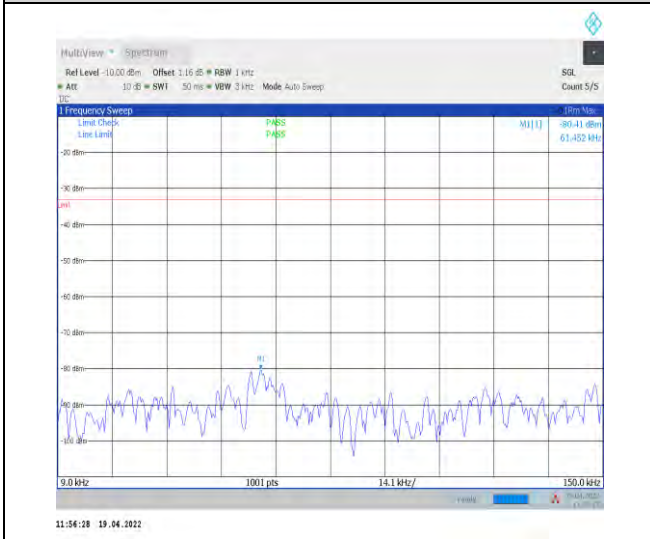






1-N14--15-10-L-1-DFT-PI2BPSK-Inner\_1RB\_Left-1  
@1-3000-12000-Ant1--47.94--13-PASS

1-N14--15-10-L-1-DFT-PI2BPSK-Inner\_1RB\_Left-1@  
1-12000-20000-Ant1--39.22--13-PASS

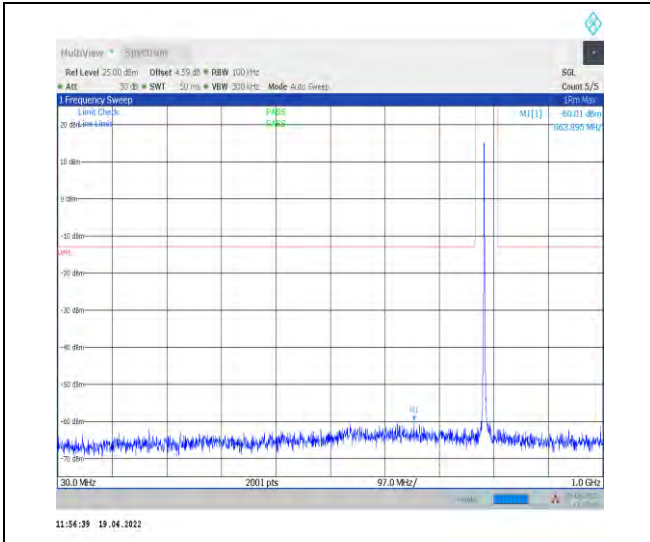


1-N14--15-10-M-1-DFT-PI2BPSK-Inner\_1RB\_Left-1  
@1-0.009-0.15-Ant1--80.41--33-PASS

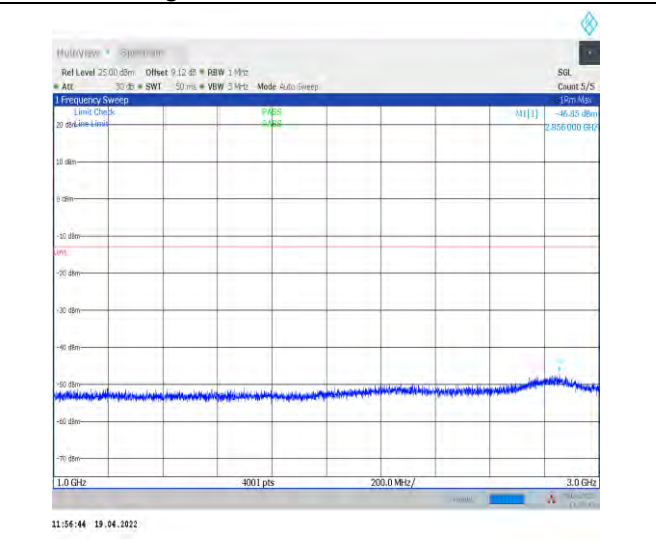
1-N14--15-10-M-1-DFT-PI2BPSK-Inner\_1RB\_Left-1  
@1-0.15-30-Ant1--84.28--23-PASS



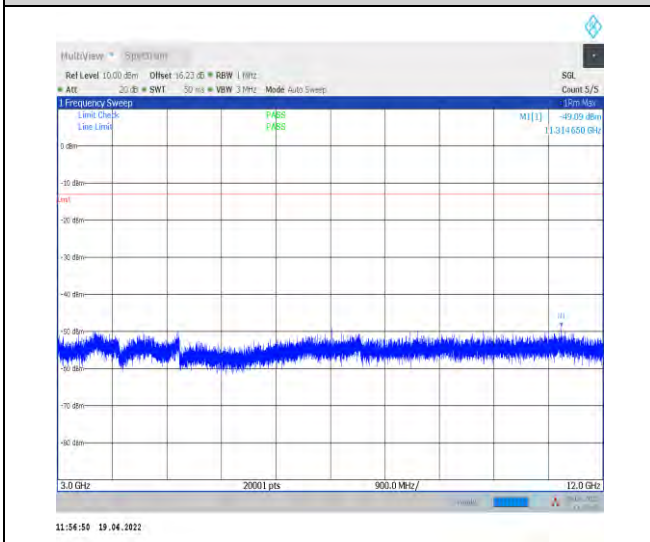
Unless otherwise agreed in writing, this document is issued by the Company subject to its General Conditions of Service printed overleaf, available on request or accessible at <http://www.sgs.com/en/Terms-and-Conditions.aspx> and, for electronic format documents, subject to Terms and Conditions for Electronic Documents at <http://www.sgs.com/en/Terms-and-Conditions/Terms-e-Documents.aspx>. Attention is drawn to the limitation of liability, indemnification and jurisdiction issues defined therein. Any holder of this document is advised that information contained hereon reflects the Company's findings at the time of its intervention only and within the limits of Client's instructions, if any. The Company's sole responsibility is to its Client and this document does not exonerate parties to a transaction from exercising all their rights and obligations under the transaction documents. This document cannot be reproduced except in full, without prior written approval of the Company. Any unauthorized alteration, forgery or falsification of the content or appearance of this document is unlawful and offenders may be prosecuted to the fullest extent of the law. Unless otherwise stated the results shown in this test report refer only to the sample(s) tested and such sample(s) are retained for 30 days only.  
Attention: To check the authenticity of testing/inspection report & certificate, please contact us at telephone: (86-755) 8307 1443, or email: [CN.Doccheck@sgs.com](mailto:CN.Doccheck@sgs.com)  
South of No. 6 Plant, No. 1, Pansheng Road, Suzhou Industrial Park, Suzhou Area, China (Jiangsu) Pilot Free Trade Zone 215000 t (86-512) 62992980 www.sgs.com.cn  
中国·苏州·中国(江苏)自由贸易试验区苏州片区苏州工业园区海胜路1号的6号厂房南楼 邮编: 215000 t (86-512) 62992980 sgs.china@sgs.com



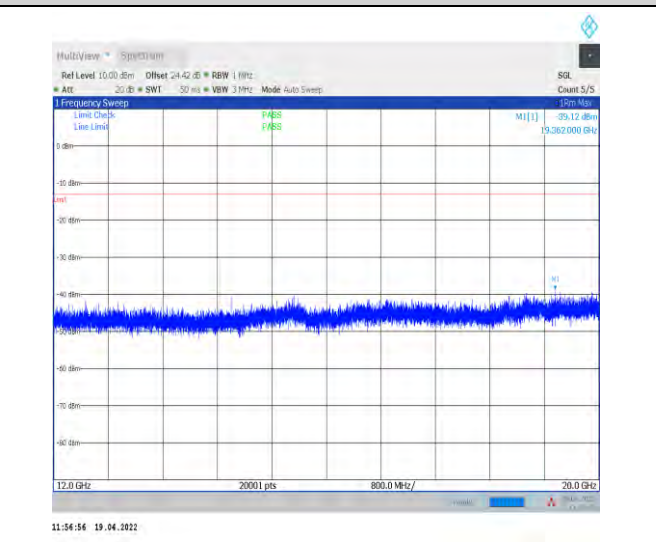
1-N14--15-10-M-1-DFT-PI2BPSK-Inner\_1RB\_Left-1  
@1-30-1000-Ant1--60.01--13-PASS



1-N14--15-10-M-1-DFT-PI2BPSK-Inner\_1RB\_Left-1  
@1-1000-3000-Ant1--46.85--13-PASS



1-N14--15-10-M-1-DFT-PI2BPSK-Inner\_1RB\_Left-1  
@1-3000-12000-Ant1--49.09--13-PASS



1-N14--15-10-M-1-DFT-PI2BPSK-Inner\_1RB\_Left-1  
@1-12000-20000-Ant1--39.12--13-PASS

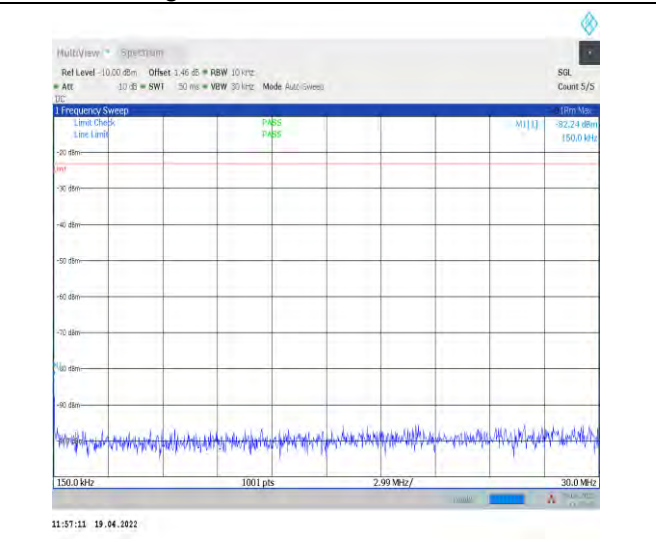
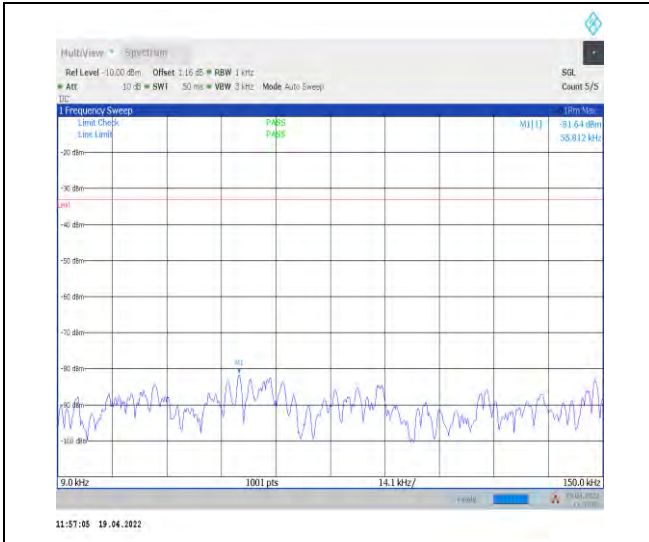


Unless otherwise agreed in writing, this document is issued by the Company subject to its General Conditions of Service printed overleaf, available on request or accessible at <http://www.sgs.com/en/Terms-and-Conditions.aspx> and, for electronic format documents, subject to Terms and Conditions for Electronic Documents at <http://www.sgs.com/en/Terms-and-Conditions/Terms-e-Documents.aspx>. Attention is drawn to the limitation of liability, indemnification and jurisdiction issues defined therein. Any holder of this document is advised that information contained hereon reflects the Company's findings at the time of its intervention only and within the limits of Client's instructions, if any. The Company's sole responsibility is to its Client and this document does not exonerate parties to a transaction from exercising all their rights and obligations under the transaction documents. This document cannot be reproduced except in full, without prior written approval of the Company. Any unauthorized alteration, forgery or falsification of the content or appearance of this document is unlawful and offenders may be prosecuted to the fullest extent of the law. Unless otherwise stated the results shown in this test report refer only to the sample(s) tested and such sample(s) are retained for 30 days only.  
Attention: To check the authenticity of testing/inspection report & certificate, please contact us at telephone: (86-755) 8307 1443, or email: CN.Doccheck@sgs.com

South of No. 6 Plant, No. 1, Runsheng Road, Suzhou Industrial Park, Suzhou Area, China (Jiangsu) Pilot Free Trade Zone 215000  
中国·苏州·中国(江苏)自由贸易试验区苏州片区苏州工业园区润胜路1号的6号厂房南楼 邮编: 215000

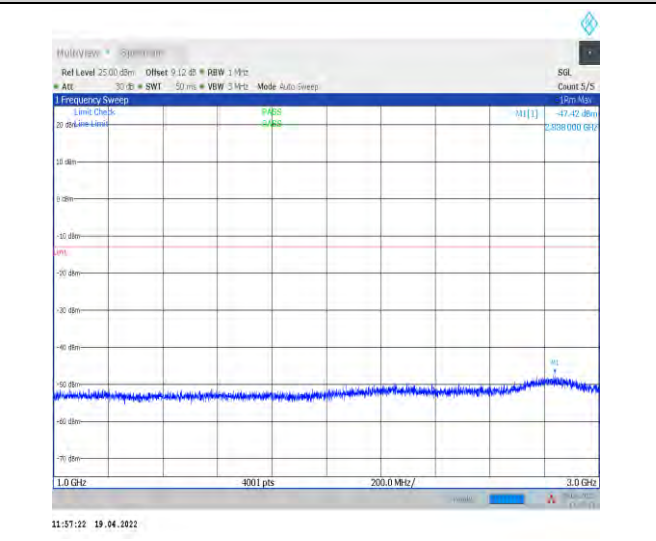
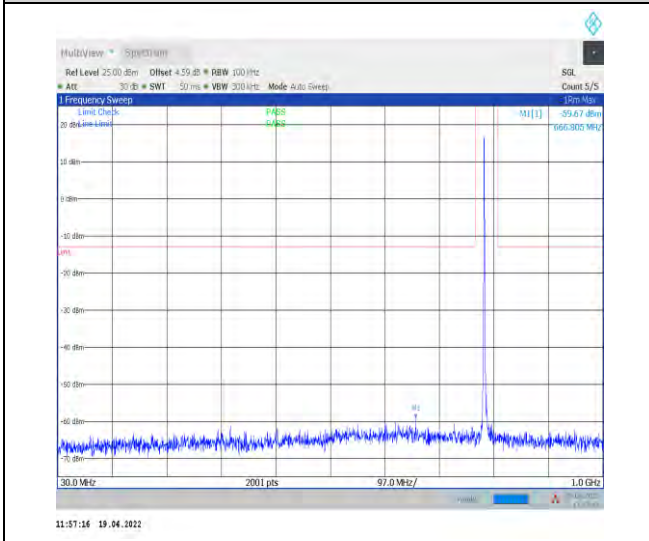
t (86-512) 62992980 www.sgs.com.cn  
t (86-512) 62992980 sgs.china@sgs.com





1-N14--15-10-H-1-DFT-PI2BPSK-Inner\_1RB\_Left-1 @1-0.009-0.15-Ant1--81.64--33-PASS

1-N14--15-10-H-1-DFT-PI2BPSK-Inner\_1RB\_Left-1 @1-0.15-30-Ant1--82.24--23-PASS



1-N14--15-10-H-1-DFT-PI2BPSK-Inner\_1RB\_Left-1 @1-30-1000-Ant1--59.67--13-PASS

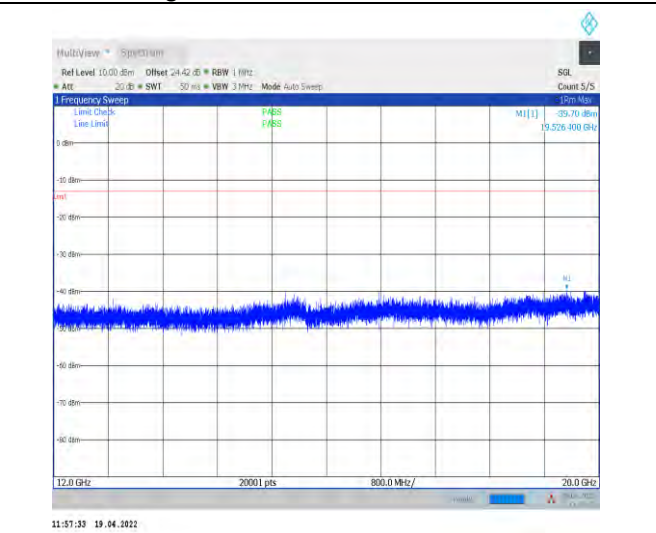
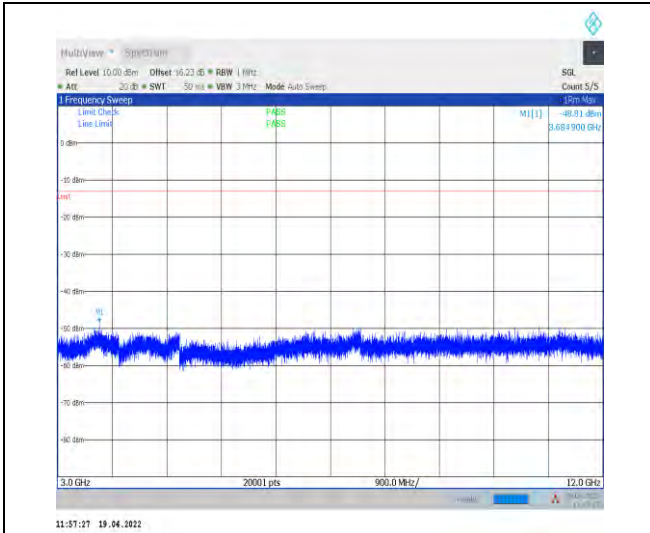
1-N14--15-10-H-1-DFT-PI2BPSK-Inner\_1RB\_Left-1 @1-1000-3000-Ant1--47.42--13-PASS



Unless otherwise agreed in writing, this document is issued by the Company subject to its General Conditions of Service printed overleaf, available on request or accessible at <http://www.sgs.com/en/Terms-and-Conditions.aspx> and, for electronic format documents, subject to Terms and Conditions for Electronic Documents at <http://www.sgs.com/en/Terms-and-Conditions/Terms-e-Documents.aspx>. Attention is drawn to the limitation of liability, indemnification and jurisdiction issues defined therein. Any holder of this document is advised that information contained hereon reflects the Company's findings at the time of its intervention only and within the limits of Client's instructions, if any. The Company's sole responsibility is to its Client and this document does not exonerate parties to a transaction from exercising all their rights and obligations under the transaction documents. This document cannot be reproduced except in full, without prior written approval of the Company. Any unauthorized alteration, forgery or falsification of the content or appearance of this document is unlawful and offenders may be prosecuted to the fullest extent of the law. Unless otherwise stated the results shown in this test report refer only to the sample(s) tested and such sample(s) are retained for 30 days only.  
**Attention: To check the authenticity of testing/inspection report & certificate, please contact us at telephone: (86-755) 8307 1443, or email: CN.Doccheck@sgs.com**

South of No. 6 Plant, No. 1, Runsheng Road, Suzhou Industrial Park, Suzhou Area, China (Jiangsu) Pilot Free Trade Zone 215000 t (86-512) 62992980 www.sgs.com.cn  
 中国·苏州·中国(江苏)自由贸易试验区苏州片区苏州工业园区海胜路1号的6号厂房南座 邮编: 215000 t (86-512) 62992980 sgs.china@sgs.com





1-N14--15-10-H-1-DFT-PI2BPSK-Inner\_1RB\_Left-1  
@1-3000-12000-Ant1--48.81--13-PASS

1-N14--15-10-H-1-DFT-PI2BPSK-Inner\_1RB\_Left-1  
@1-12000-20000-Ant1--39.70--13-PASS



Unless otherwise agreed in writing, this document is issued by the Company subject to its General Conditions of Service printed overleaf, available on request or accessible at <http://www.sgs.com/en/Terms-and-Conditions.aspx> and, for electronic format documents, subject to Terms and Conditions for Electronic Documents at <http://www.sgs.com/en/Terms-and-Conditions/Terms-e-Documents.aspx>. Attention is drawn to the limitation of liability, indemnification and jurisdiction issues defined therein. Any holder of this document is advised that information contained hereon reflects the Company's findings at the time of its intervention only and within the limits of Client's instructions, if any. The Company's sole responsibility is to its Client and this document does not exonerate parties to a transaction from exercising all their rights and obligations under the transaction documents. This document cannot be reproduced except in full, without prior written approval of the Company. Any unauthorized alteration, forgery or falsification of the content or appearance of this document is unlawful and offenders may be prosecuted to the fullest extent of the law. Unless otherwise stated the results shown in this test report refer only to the sample(s) tested and such sample(s) are retained for 30 days only.  
Attention: To check the authenticity of testing/inspection report & certificate, please contact us at telephone: (86-755) 8307 1443, or email: [CN.Doccheck@sgs.com](mailto:CN.Doccheck@sgs.com)

South of No. 6 Plant, No. 1, Runsheng Road, Suzhou Industrial Park, Suzhou Area, China (Jiangsu) Pilot Free Trade Zone 215000 t (86-512) 62992980 www.sgs.com.cn  
中国·苏州·中国(江苏)自由贸易试验区苏州片区苏州工业园区海胜路1号的6号厂房南楼 邮编: 215000 t (86-512) 62992980 sgs.china@sgs.com

### Field Strength of Spurious Radiation

Test Band = SA Band 14 BW 10M\_ TM1

Test Channel = Mid Channel

Final Data List									
NO.	Frequency [MHz]	Reading [dBμV]	Factor [dB]	Level [dBm]	Limit [dBm]	Margin [dB]	Height [cm]	Angle [°]	Polarity
1	1577.18	52.77	-118.20	-65.43	-40.00	25.43	263	204	Horizontal
2	2365.77	51.64	-115.23	-63.59	-13.00	50.59	251	3	Horizontal
3	3154.36	50.16	-112.11	-61.95	-13.00	48.95	174	80	Horizontal
4	3942.95	49.61	-110.31	-60.70	-13.00	47.70	186	283	Horizontal
5	4731.54	49.75	-107.87	-58.12	-13.00	45.12	264	0	Horizontal
6	5520.13	50.64	-106.35	-55.71	-13.00	42.71	188	142	Horizontal

Final Data List									
NO.	Frequency [MHz]	Reading [dBμV]	Factor [dB]	Level [dBm]	Limit [dBm]	Margin [dB]	Height [cm]	Angle [°]	Polarity
1	1577.18	53.85	-118.20	-64.35	-40.00	24.35	162	265	Vertical
2	2408	61.04	-115.07	-54.03	-13.00	41.03	241	234	Vertical
3	3154.36	50.79	-112.11	-61.32	-13.00	48.32	176	139	Vertical
4	3942.95	50.60	-110.31	-59.71	-13.00	46.71	284	359	Vertical
5	4731.54	51.05	-107.87	-56.82	-13.00	43.82	188	123	Vertical
6	5520.13	50.19	-106.35	-56.16	-13.00	43.16	264	77	Vertical



Unless otherwise agreed in writing, this document is issued by the Company subject to its General Conditions of Service printed overleaf, available on request or accessible at <http://www.sgs.com/en/Terms-and-Conditions.aspx> and, for electronic format documents, subject to Terms and Conditions for Electronic Documents at <http://www.sgs.com/en/Terms-and-Conditions/Terms-e-Documents.aspx>. Attention is drawn to the limitation of liability, indemnification and jurisdiction issues defined therein. Any holder of this document is advised that information contained hereon reflects the Company's findings at the time of its intervention only and within the limits of Client's instructions, if any. The Company's sole responsibility is to its Client and this document does not exonerate parties to a transaction from exercising all their rights and obligations under the transaction documents. This document cannot be reproduced except in full, without prior written approval of the Company. Any unauthorized alteration, forgery or falsification of the content or appearance of this document is unlawful and offenders may be prosecuted to the fullest extent of the law. Unless otherwise stated the results shown in this test report refer only to the sample(s) tested and such sample(s) are retained for 30 days only.

Attention: To check the authenticity of testing/inspection report & certificate, please contact us at telephone: (86-755) 8307 1443, or email: [CN.Doccheck@sgs.com](mailto:CN.Doccheck@sgs.com)

South of No. 6 Plant, No. 1, Runsheng Road, Suzhou Industrial Park, Suzhou Area, China (Jiangsu) Pilot Free Trade Zone 215000 t (86-512) 62992980 www.sgsgroup.com.cn  
 中国·苏州·中国(江苏)自由贸易试验区苏州片区苏州工业园区海胜路1号的6号厂房南楼 邮编: 215000 t (86-512) 62992980 sgs.china@sgs.com

Test Band = SA Band 14 BW 5M\_ TM1

Test Channel = Low Channel

Final Data List									
NO.	Frequency [MHz]	Reading [dBμV]	Factor [dB]	Level [dBm]	Limit [dBm]	Margin [dB]	Height [cm]	Angle [°]	Polarity
1	1576.68	53.23	-118.20	-64.97	-40.00	24.97	142	290	Horizontal
2	2365.02	52.15	-115.23	-63.08	-13.00	50.08	263	120	Horizontal
3	3153.36	52.04	-112.12	-60.08	-13.00	47.08	241	89	Horizontal
4	3941.7	49.66	-110.32	-60.66	-13.00	47.66	117	360	Horizontal
5	4730.04	51.36	-107.88	-56.52	-13.00	43.52	265	151	Horizontal
6	5518.38	50.70	-106.36	-55.66	-13.00	42.66	244	306	Horizontal

Final Data List									
NO.	Frequency [MHz]	Reading [dBμV]	Factor [dB]	Level [dBm]	Limit [dBm]	Margin [dB]	Height [cm]	Angle [°]	Polarity
1	1576.68	53.08	-118.20	-65.12	-40.00	25.12	163	221	Vertical
2	2365.02	53.05	-115.23	-62.18	-13.00	49.18	251	96	Vertical
3	3153.36	51.73	-112.12	-60.39	-13.00	47.39	147	252	Vertical
4	3941.7	50.96	-110.32	-59.36	-13.00	46.36	265	214	Vertical
5	4730.04	49.78	-107.88	-58.10	-13.00	45.10	255	19	Vertical
6	5518.38	50.00	-106.36	-56.36	-13.00	43.36	144	357	Vertical



Unless otherwise agreed in writing, this document is issued by the Company subject to its General Conditions of Service printed overleaf, available on request or accessible at <http://www.sgs.com/en/Terms-and-Conditions.aspx> and, for electronic format documents, subject to Terms and Conditions for Electronic Documents at <http://www.sgs.com/en/Terms-and-Conditions/Terms-e-Documents.aspx>. Attention is drawn to the limitation of liability, indemnification and jurisdiction issues defined therein. Any holder of this document is advised that information contained hereon reflects the Company's findings at the time of its intervention only and within the limits of Client's instructions, if any. The Company's sole responsibility is to its Client and this document does not exonerate parties to a transaction from exercising all their rights and obligations under the transaction documents. This document cannot be reproduced except in full, without prior written approval of the Company. Any unauthorized alteration, forgery or falsification of the content or appearance of this document is unlawful and offenders may be prosecuted to the fullest extent of the law. Unless otherwise stated the results shown in this test report refer only to the sample(s) tested and such sample(s) are retained for 30 days only.  
**Attention: To check the authenticity of testing/inspection report & certificate, please contact us at telephone: (86-755) 8307 1443, or email: CN.Doccheck@sgs.com**

South of No. 6 Plant, No. 1, Runsheng Road, Suzhou Industrial Park, Suzhou Area, China (Jiangsu) Pilot Free Trade Zone 215000  
 中国·苏州·中国(江苏)自由贸易试验区苏州片区苏州工业园区润胜路1号的6号厂房南楼 邮编: 215000

t (86-512) 62992980 www.sgs.com.cn  
 t (86-512) 62992980 sgs.china@sgs.com



Test Band = SA Band 14 BW 5M\_ TM1

Test Channel = Mid Channel

Final Data List									
NO.	Frequency [MHz]	Reading [dBμV]	Factor [dB]	Level [dBm]	Limit [dBm]	Margin [dB]	Height [cm]	Angle [°]	Polarity
1	1581.68	54.40	-118.19	-63.79	-40.00	23.79	263	77	Horizontal
2	2372.52	51.77	-115.22	-63.45	-13.00	50.45	241	360	Horizontal
3	3163.36	51.20	-112.09	-60.89	-13.00	47.89	175	313	Horizontal
4	3954.2	50.03	-110.28	-60.25	-13.00	47.25	265	125	Horizontal
5	4745.04	51.41	-107.85	-56.44	-13.00	43.44	255	62	Horizontal
6	5535.88	49.88	-106.29	-56.41	-13.00	43.41	147	15	Horizontal

Final Data List									
NO.	Frequency [MHz]	Reading [dBμV]	Factor [dB]	Level [dBm]	Limit [dBm]	Margin [dB]	Height [cm]	Angle [°]	Polarity
1	1581.68	53.48	-118.19	-64.71	-40.00	24.71	142	357	Vertical
2	2372.52	52.15	-115.22	-63.07	-13.00	50.07	263	155	Vertical
3	3163.36	51.28	-112.09	-60.81	-13.00	47.81	241	31	Vertical
4	3931.5556	57.18	-110.34	-53.16	-13.00	40.16	265	76	Vertical
5	4745.04	49.56	-107.85	-58.29	-13.00	45.29	244	16	Vertical
6	5535.88	50.33	-106.29	-55.96	-13.00	42.96	177	265	Vertical



Unless otherwise agreed in writing, this document is issued by the Company subject to its General Conditions of Service printed overleaf, available on request or accessible at <http://www.sgs.com/en/Terms-and-Conditions.aspx> and, for electronic format documents, subject to Terms and Conditions for Electronic Documents at <http://www.sgs.com/en/Terms-and-Conditions/Terms-e-Documents.aspx>. Attention is drawn to the limitation of liability, indemnification and jurisdiction issues defined therein. Any holder of this document is advised that information contained hereon reflects the Company's findings at the time of its intervention only and within the limits of Client's instructions, if any. The Company's sole responsibility is to its Client and this document does not exonerate parties to a transaction from exercising all their rights and obligations under the transaction documents. This document cannot be reproduced except in full, without prior written approval of the Company. Any unauthorized alteration, forgery or falsification of the content or appearance of this document is unlawful and offenders may be prosecuted to the fullest extent of the law. Unless otherwise stated the results shown in this test report refer only to the sample(s) tested and such sample(s) are retained for 30 days only.

Attention: To check the authenticity of testing/inspection report & certificate, please contact us at telephone: (86-755) 8307 1443, or email: [CN.Doccheck@sgs.com](mailto:CN.Doccheck@sgs.com)

South of No. 6 Plant, No. 1, Runsheng Road, Suzhou Industrial Park, Suzhou Area, China (Jiangsu) Pilot Free Trade Zone 215000  
 中国·苏州·中国(江苏)自由贸易试验区苏州片区苏州工业园区海胜路1号的6号厂房南楼 邮编: 215000

t (86-512) 62992980 www.sgs.com.cn  
 t (86-512) 62992980 sgs.china@sgs.com

**Test Band = SA Band 14 BW 5M\_ TM1**
**Test Channel = High Channel**

Final Data List									
NO.	Frequency [MHz]	Reading [dBμV]	Factor [dB]	Level [dBm]	Limit [dBm]	Margin [dB]	Height [cm]	Angle [°]	Polarity
1	1586.68	52.00	-118.19	-66.19	-40.00	26.19	142	313	Horizontal
2	2380.02	52.05	-115.20	-63.15	-13.00	50.15	263	108	Horizontal
3	3173.36	50.57	-112.07	-61.50	-13.00	48.50	284	14	Horizontal
4	3966.7	50.53	-110.25	-59.72	-13.00	46.72	176	313	Horizontal
5	4760.04	49.81	-107.82	-58.01	-13.00	45.01	294	172	Horizontal
6	5553.38	49.89	-106.21	-56.32	-13.00	43.32	144	108	Horizontal

Final Data List									
NO.	Frequency [MHz]	Reading [dBμV]	Factor [dB]	Level [dBm]	Limit [dBm]	Margin [dB]	Height [cm]	Angle [°]	Polarity
1	1586.68	52.06	-118.19	-66.13	-40.00	26.13	142	110	Vertical
2	2380.02	51.18	-115.20	-64.02	-13.00	51.02	263	9	Vertical
3	3173.36	50.47	-112.07	-61.60	-13.00	48.60	251	94	Vertical
4	3966.7	49.27	-110.25	-60.98	-13.00	47.98	176	0	Vertical
5	4760.04	49.24	-107.82	-58.58	-13.00	45.58	284	170	Vertical
6	5553.38	50.08	-106.21	-56.13	-13.00	43.13	177	315	Vertical



Unless otherwise agreed in writing, this document is issued by the Company subject to its General Conditions of Service printed overleaf, available on request or accessible at <http://www.sgs.com/en/Terms-and-Conditions.aspx> and, for electronic format documents, subject to Terms and Conditions for Electronic Documents at <http://www.sgs.com/en/Terms-and-Conditions/Terms-e-Documents.aspx>. Attention is drawn to the limitation of liability, indemnification and jurisdiction issues defined therein. Any holder of this document is advised that information contained hereon reflects the Company's findings at the time of its intervention only and within the limits of Client's instructions, if any. The Company's sole responsibility is to its Client and this document does not exonerate parties to a transaction from exercising all their rights and obligations under the transaction documents. This document cannot be reproduced except in full, without prior written approval of the Company. Any unauthorized alteration, forgery or falsification of the content or appearance of this document is unlawful and offenders may be prosecuted to the fullest extent of the law. Unless otherwise stated the results shown in this test report refer only to the sample(s) tested and such sample(s) are retained for 30 days only.

Attention: To check the authenticity of testing/inspection report & certificate, please contact us at telephone: (86-755) 8307 1443, or email: [CN.Doccheck@sgs.com](mailto:CN.Doccheck@sgs.com)

South of No. 6 Plant, No. 1, Runsheng Road, Suzhou Industrial Park, Suzhou Area, China (Jiangsu) Pilot Free Trade Zone 215000  
 中国·苏州·中国(江苏)自由贸易试验区苏州片区苏州工业园区润胜路1号的6号厂房南楼 邮编: 215000

t (86-512) 62992980 www.sgs.com.cn  
 t (86-512) 62992980 sgs.china@sgs.com

## Frequency Stability for SA

### Test Result

### Frequency Error VS. Voltage

Voltage										
Band	SCS	Bandwidth	Modulation	Channel	RB Config	Voltage	Temperature	Deviation(Hz)	Deviation (ppm)	Verdict
N14	15	10	DFT-PI2BPSK	M	Outer_Full	VH	NT	2.500000	0.003153	PASS
N14	15	10	DFT-PI2BPSK	M	Outer_Full	VN	NT	2.500000	0.003153	PASS
N14	15	10	DFT-PI2BPSK	M	Outer_Full	VL	NT	2.600000	0.003279	PASS
N14	15	10	CP-QPSK	M	Outer_Full	VH	NT	5.200000	0.006557	PASS
N14	15	10	CP-QPSK	M	Outer_Full	VN	NT	3.000000	0.003783	PASS
N14	15	10	CP-QPSK	M	Outer_Full	VL	NT	10.400000	0.013115	PASS



Unless otherwise agreed in writing, this document is issued by the Company subject to its General Conditions of Service printed overleaf, available on request or accessible at <http://www.sgs.com/en/Terms-and-Conditions.aspx> and, for electronic format documents, subject to Terms and Conditions for Electronic Documents at <http://www.sgs.com/en/Terms-and-Conditions/Terms-e-Documents.aspx>. Attention is drawn to the limitation of liability, indemnification and jurisdiction issues defined therein. Any holder of this document is advised that information contained hereon reflects the Company's findings at the time of its intervention only and within the limits of Client's instructions, if any. The Company's sole responsibility is to its Client and this document does not exonerate parties to a transaction from exercising all their rights and obligations under the transaction documents. This document cannot be reproduced except in full, without prior written approval of the Company. Any unauthorized alteration, forgery or falsification of the content or appearance of this document is unlawful and offenders may be prosecuted to the fullest extent of the law. Unless otherwise stated the results shown in this test report refer only to the sample(s) tested and such sample(s) are retained for 30 days only.

Attention: To check the authenticity of testing/inspection report & certificate, please contact us at telephone: (86-755) 8307 1443, or email: [CN.Doccheck@sgs.com](mailto:CN.Doccheck@sgs.com)

South of No. 6 Plant, No. 1, Pansheng Road, Suzhou Industrial Park, Suzhou Area, China (Jiangsu) Pilot Free Trade Zone 215000  
 中国·苏州·中国(江苏)自由贸易试验区苏州片区苏州工业园区海胜路1号的6号厂房南楼 邮编: 215000

t (86-512) 62992980 www.sgs.com.cn  
 t (86-512) 62992980 sgs.china@sgs.com



Frequency Error VS. Temperature

Voltage										
Band	SCS	Bandwidth	Modulation	Channel	RB Config	Voltage	Temperature	Deviation(Hz)	Deviation (ppm)	Verdict
N14	15	10	DFT-PI2BPSK	M	Outer_Full	NV	-30	1.600000	0.002018	PASS
N14	15	10	DFT-PI2BPSK	M	Outer_Full	NV	-20	3.600000	0.004540	PASS
N14	15	10	DFT-PI2BPSK	M	Outer_Full	NV	-10	3.400000	0.004288	PASS
N14	15	10	DFT-PI2BPSK	M	Outer_Full	NV	0	1.800000	0.002270	PASS
N14	15	10	DFT-PI2BPSK	M	Outer_Full	NV	10	3.500000	0.004414	PASS
N14	15	10	DFT-PI2BPSK	M	Outer_Full	NV	20	2.200000	0.002774	PASS
N14	15	10	DFT-PI2BPSK	M	Outer_Full	NV	30	4.400000	0.005549	PASS
N14	15	10	DFT-PI2BPSK	M	Outer_Full	NV	40	4.200000	0.005296	PASS
N14	15	10	DFT-PI2BPSK	M	Outer_Full	NV	50	5.300000	0.006683	PASS
N14	15	10	CP-QPSK	M	Outer_Full	NV	-30	2.900000	0.003657	PASS
N14	15	10	CP-QPSK	M	Outer_Full	NV	-20	5.100000	0.006431	PASS
N14	15	10	CP-QPSK	M	Outer_Full	NV	-10	5.800000	0.007314	PASS
N14	15	10	CP-QPSK	M	Outer_Full	NV	0	6.900000	0.008701	PASS
N14	15	10	CP-QPSK	M	Outer_Full	NV	10	4.500000	0.005675	PASS
N14	15	10	CP-QPSK	M	Outer_Full	NV	20	2.900000	0.003657	PASS
N14	15	10	CP-QPSK	M	Outer_Full	NV	30	5.000000	0.006305	PASS
N14	15	10	CP-QPSK	M	Outer_Full	NV	40	5.100000	0.006431	PASS
N14	15	10	CP-QPSK	M	Outer_Full	NV	50	4.000000	0.005044	PASS

The End



Unless otherwise agreed in writing, this document is issued by the Company subject to its General Conditions of Service printed overleaf, available on request or accessible at <http://www.sgs.com/en/Terms-and-Conditions.aspx> and, for electronic format documents, subject to Terms and Conditions for Electronic Documents at <http://www.sgs.com/en/Terms-and-Conditions/Terms-e-Documents.aspx>. Attention is drawn to the limitation of liability, indemnification and jurisdiction issues defined therein. Any holder of this document is advised that information contained hereon reflects the Company's findings at the time of its intervention only and within the limits of Client's instructions, if any. The Company's sole responsibility is to its Client and this document does not exonerate parties to a transaction from exercising all their rights and obligations under the transaction documents. This document cannot be reproduced except in full, without prior written approval of the Company. Any unauthorized alteration, forgery or falsification of the content or appearance of this document is unlawful and offenders may be prosecuted to the fullest extent of the law. Unless otherwise stated the results shown in this test report refer only to the sample(s) tested and such sample(s) are retained for 30 days only.

Attention: To check the authenticity of testing/inspection report & certificate, please contact us at telephone: (86-755) 8307 1443, or email: [CN.Doccheck@sgs.com](mailto:CN.Doccheck@sgs.com)

South of No. 6 Plant, No. 1, Runsheng Road, Suzhou Industrial Park, Suzhou Area, China (Jiangsu) Pilot Free Trade Zone 215000  
 中国·苏州·中国(江苏)自由贸易试验区苏州片区苏州工业园区润胜路1号的6号厂房南楼 邮编: 215000

t (86-512) 62992980 www.sgs.com.cn  
 t (86-512) 62992980 sgs.china@sgs.com