

FCC Statement
This device complies with Part 15 of the FCC Rules. Operation is subject to the following two conditions:
(1) This device may not cause harmful interference.
(2) This device must accept any interference received, including interference that may cause undesired operation.

2.Changes or modifications not expressly approved by the party responsible for compliance could void the user's authority to operate the equipment.

Note:This equipment has been tested and found to comply with the limits for a class B digital device,pursuant to Part 15 of the FCC Rules. These limits are designed to provide reasonable protection against harmful interference in a residential installation.
This equipment generates uses and can radiate radio frequency energy and if not installed and used in accordance with the instructions may cause harmful interference to radio communications.However,there is no guarantee that interference will not occur in a particular installation.If this equipment does cause harmful interference to radio or television reception,which can be determined by turning the equipment off and on,the user is encouraged to try to correct the interference by one or more of the following measures:

Reorient or relocate the receiving antenna.
Increase the separation between the equipment and receiver.
Connect the equipment into an outlet on a circuit different from that to which the receiver is connected.
Consult the dealer or an experienced radio/TV technician for help.

The device has been evaluated to meet general RF exposure requirement. The description is used in portable exposure condition without restriction.

FAQ

Fault prompt	Solution
Unable to turn on.	Check the power of the device, and try to charge the product.
No sound broadcasting	The sound may be turned off. Double click the switch button to turn on the sound broadcasting.
APP : Unable to connect mobile application.	Bluetooth or GPS of the mobile phone is turned off and needs to be turned on.
APP : Unable to connect mobile application.	The handle is not turned on.
The cordless ball falls during use.	Check whether the rope buckle is installed. It needs to be installed according to steps.
Rope falling off during use	Check whether the rope is stuck in the groove of the swivel when passing through the swivel.
Rope buckle falls off during use	Check whether it passes through the large hole of the rope buckle before passing through the small hole during installation.
Rope buckle falls off during use.	Check whether rope risers are installed.

Note: some abnormalities can be eliminated by restarting after shutdown. If the failure cannot be eliminated by operating according to the above table, please contact the after-sales customer service to solve it.

03

Name and content of harmful substances in the product

In order to meet the relevant provisions and requirements of the administrative measures for the restricted use of hazardous substances in electrical and electronic products (Order No. 32 of the Ministry of industry and information technology of the people's Republic of China), the hazardous substances in this product are classified according to the parts, and are declared as follows:

Name and content of harmful substances in the product

Part Name	Harmful Substances					
	Lead (Pb)	Mercury (Hg)	Cadmium (Cd)	Hexavalent chromium (Cr6+)	Polychlorinated biphenyls (PCB)	Phthalates (PAHs)
Outer casing	○	○	○	○	○	○
Rope	○	○	○	○	○	○
Plastic parts	○	○	○	○	○	○
Data Cable	×	○	○	○	○	○

This form is prepared in accordance with SJ / T 11364.
○ It means that the content of the hazardous substance in all homogeneous materials of the component is below the limit specified in GB / T 26572.
× Indicates that the content of the hazardous substance in at least one homogeneous material of the component exceeds the limit specified in GB / T 26572.

The harmful substances contained in this product are caused by the lack of substitutable substances due to the current technical limitations. It meets the requirements of China's administrative measures for restricted use of hazardous substances in electrical and electronic products and within the scope of EU RoHS exemption. When designing the product, special consideration has been made to ensure that the appearance parts are made of non-toxic and harmless environmental friendly materials. Consumers should not use the harmful substances of CEI under the ball, which will not harm the human body.

The electric and electronic products sold in the people's Republic of China will be marked with the symbol (Pb-free) and the numbers in the circle represent the normal environmental protection service life of the products.

04

Announcement:

- Before installing and using the product, please read this document carefully, especially the relevant safety tips. Please keep this document for future reference.
- The illustrations and functional descriptions in this document are for illustrative purposes only, and are for reference only. The products are subject to the physical objects. Some components, functions and features mentioned in this document are for illustrative purposes only, and may only be applicable to certain specific models of products. Unless otherwise specified, nothing in this document is a description of the specific specifications and configurations of the product. If you need to know the product specifications and configurations, please refer to the relevant specifications of this product or consult the product seller. Products, applications and contents will be updated from time to time, and the actual situation may be different from this document.
- The nominal storage capacity only represents the specification, and the user's actual available capacity is lower than the nominal value. The technical performance indicators mentioned are based on specific environment measurement, and the indicator data obtained in other operating environments may be different due to settings and environments. Some products (according to the product description) need network support to realize all functions, and may need to be used with smart devices such as mobile phones. The mentioned software and Internet services are used in accordance with relevant licenses and / or service agreements. Using network functions may consume data traffic and incur service fees, which will be charged by your network service provider according to its standards.

11

Warranty Statement

If the product fails or is damaged due to quality defects as confirmed by us under normal use within the warranty period from the date of purchase, we will repair, replace or return the product for free as appropriate. Unless otherwise specified by relevant laws, the products or components used for replacement may not be new, but will have good performance and at least be functionally equivalent to the original products or components. The warranty period starts from the date of the first purchase of the product and is subject to the invoice date. If there is no valid invoice, the warranty period shall be calculated from the ex-factory date plus thirty (30) days if the invoice date is later than the actual delivery date of the product. The warranty period starts from the actual delivery date. The starting date of the warranty period shall not be later than the sixteen (16th) day after the date of product delivery. The repaired or replaced products shall continue to enjoy the warranty within the remaining warranty period, but the minimum shall not be less than thirty (30) days. If you apply for warranty, please contact the product distributor or call the company's service hotline, and follow our instructions. When applying for warranty, you need to provide an accurate, complete and clearly filled-in valid sales invoice.

12

Product Warranty Information

Product Name	Warranty Part Name	Warranty Period	Type Of Warranty
Smart Jump Rope	Main Parts	12	Send For Repair
	Accessory	12	Not Applicable
	Consumable Material	12	Not Applicable
	Rope	12	Not Applicable

- Notes And Descriptions**
- This table is not a description of product specifications and configurations. Product specifications and configurations are subject to the actual product.
 - When you return the products, you should properly package them and cooperate with the logistics provider for shipment. It is recommended to use the original package of the product. If the returned products are not covered by the warranty, we will contact you and deal with them in the way you confirm. Please make sure that the contact information is accurate. If the repaired or replaced products are not returned to you for more than two (2) months due to your reasons, it shall be deemed that you agree to be disposed of by us in an appropriate way.
- Warning**
- Only use the original charging cable specially provided by the manufacturer.
 - It is forbidden to use the product in the environment with open fire or fragile products.
 - It is forbidden to use the product in extremely hot (higher than 45°) or extremely cold (lower than - 20°).
 - Use the charging cable carefully to avoid damage. It is forbidden to drag or pull the product with the charging cable, use the charging cable as a handle, and clamp the charging cable in the door crack.
 - Do not pull the charging cable at sharp corners and corners. It is forbidden to run the product on the charging line, and the charging line should be far away from the heat source.
 - Do not use damaged charging cable.
 - It is forbidden to burn the product even if the product has been seriously damaged. The battery of the product may explode.
 -

13

Warranty Card

When purchasing products, please fill in the following information completely and clearly and affix the seal of the seller to protect your legitimate rights and interests.

User Information	User Name	E-mail
	Address	
Product Information	Contact Number	Postal Code
	Product Name	Product Brand / Number (Batch Number)
Vendor Information	Name	
	Address	
Remarks	Contact Number	Invoice No.
	Date of Sale	

(1) This form shall be confirmed by the seller.
(2) For applicable related products, the "Three Guarantees" product warranty card is equivalent to the Three Guarantees certificate.
(3) The maintenance records shall be subject to the maintenance certificate of the authorized service organization. Please keep them properly after applying for service.

14

SMART JUMP ROPE

IR1

Note: please read this document carefully and keep it properly before installing and using this product.



MENU

- List Of Main Products 02
- Security Information 02
- Installation Steps 03
- Rope Length Adjustment 03
- Specification 04
- Description Of Intelligent Voice Rope Skipping 02
- Install Application 02
- FAQ 02
- Name And Content Of Harmful Substances In The Product 04
- Announcement 11
- Warranty Statement 12
- Product Warranty Information 13
- Warranty Card 14

List Of Main Products

Main and auxiliary rope skipping handle, 3M rope skipping storage bag, type-C charging cable, rope buckle, instruction, rope cap.
Cordless ball (double rope version)
Carrying case (Deluxe Version)

Security Information

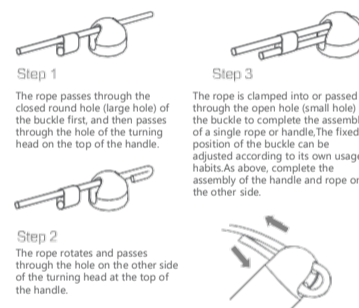
Before using this product, please read the following safety instructions and follow all conventional safety precautions. Any operation inconsistent with this manual may cause damage to this product.

NOTES

- Only authorized technicians can disassemble this product, and users are not recommended to disassemble it by themselves.
- Do not put the equipment near the heat source or exposed fire source, such as electric heater, oven, fire, candle or other places that may generate high temperature.
- Do not let children or pets bite the equipment or its accessories to avoid injury or equipment failure.
- The applicable working temperature of this product is - 2° - 45°. Do not use this product in an environment where the temperature is too high or too low.
- Please plug carefully during charging. Do not use this product during charging to avoid damage to the plug. After charging, unplug the charger. Do not use direct charging at the time to avoid equipment damage.
- Please make preparations for all parts of your body before skipping rope. In particular, the ankles, wrists, shoulder joints and elbow joints must be moved to help accelerate the blood circulation of the body and avoid joint, ligament and muscle damage.
- Please do some stretching exercises after exercise, especially for the legs, which can relieve muscle tension or spasm.

02

Installation Steps:



Rope Length Adjustment

Adjust the rope length according to the user's height.
Specific method:
Stand upright, hold the middle point of the rope body with both ankles, and hold the rope handle with both hands straight to adjust the end of the rope body so that the position where it is connected with the handle is just at the height of the elbow joint. Beginners can appropriately keep it long, adjust to the chest position, and gradually shorten it with the improvement of the level. Adjust the proper length and fasten the rope buckle. It is recommended to cut off the excessive rope.

03

Adjustment Comparison Table

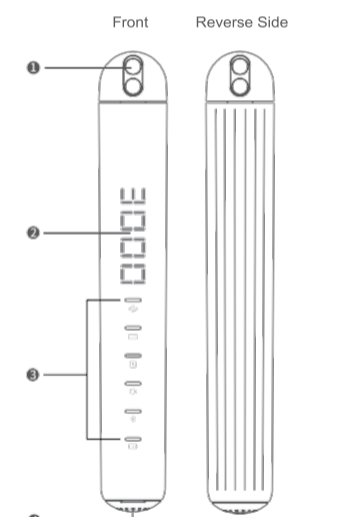
Height (CM)	140	150	155	160	165	170	175	180	185
Rope Length (M)	2.1	2.5	2.8	2.7	3.1	3.0	2.8	2.9	2.9

Specification

Product Name : Smart Jump Rope
Product Model : SJ500, SJ500-N, SJ500-L
This equipment contains model approval code:
CMITID: 20200915071 Wireless transmission module
Handle Size : 160mm x 22mm
Net Weight Of Handle : 124g±5g
Input Voltage : 5V
Battery capacity : 200mAh
Battery Type : Lithium ion polymer battery
Rated Power : 2W
Support System : IOS 12.0 or android6.0 and above
Connection Method : Bluetooth 5.0
Sensor : Hall sensor x 3
Charging Port : type-C charging port

04

Description of Smart Jump Rope



05

Swivel:
used to fix skipping rope.

LED Light Display
Free Jump Mode: Display the number of skipping rope
Count Skip Mode: Display countdown times
Timed Jump Mode: Display countdown time (seconds)
Charging Mode: Display current power percentage

Description Of Status Indicator

- Free Jump Mode:
 - Count Skip Mode: Skipping Mode
 - Timed Jump Mode:
 - Voice Broadcasting: When the voice function is on, the light is always on. When the voice function is off, the light is always off.
 - Bluetooth Connectivity: The Bluetooth connection of the mobile phone is normal, the light is always on. The mobile phone Bluetooth is not connected, the light flashes.
 - Battery Status: low battery, please charge, the lamp flashes. During charging and fully charging, the lamp is always on. Light off under normal power state.

06

USB Charging Hole
Gently pull to open the cover at the rear of the main handle, and connect the power supply through the USB cable for charging.

Full charge time is 60 minutes
The endurance time can reach 28 hours
Standby time can reach 30 days

Type-C Charging Port
Function Key / Power Switch

Long Press For 2 Seconds: power on / off
Double Press: voice broadcast off / on
Short Press: mode switching

Power Switch / Function Key
The main handle is a multi-function button, which realizes corresponding functions through different operations:

- Press and hold the key for 2 seconds in the power off state, and the rope skipping will enter the power on state.
- Press and hold the button for two seconds when the machine is turned on without movement, and the rope skipping will enter the power-off state.
- After entering the free jump mode, timed jump mode or count jump mode, short press the key to enter the sports pause state, and then short press the key to end the current sports.
- When the movement in timing mode or counting mode reaches the set target number, press the key briefly to restore the sports state.
- Double click the button to turn on / off the voice broadcasting function in the power on state.
- Press the switch for 5 times to reset the equipment.

Note: the preset time of the timer skip mode is 60 seconds, and the preset number of times of the count skip mode is 3000 countdowns. The preset value can be adjusted through the app.

07

TUYA Application



IOS: Only support iPhone6 and above, update IOS to the Latest version. Scan the QR code below to download the app, you can search TUYA in Apple App Store, download and update to the latest version.

Android: Only support Mobile phones with Android 6.0 and above, Magic UI 2.0 or EMUI 8.0 and above. Scan the QR code below to download the app, you can search TUYA in App Store, download and update to the latest.

08