

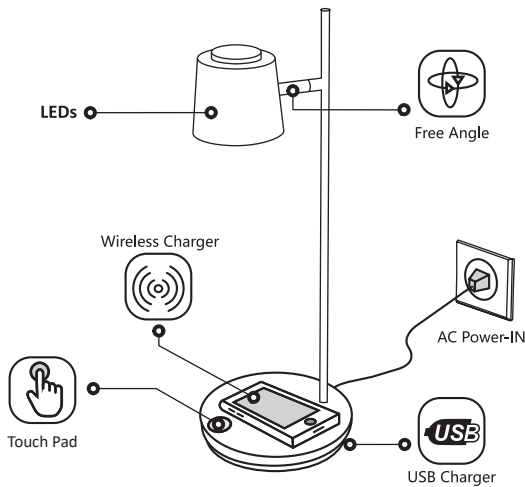
Made in China

ITEM:

# BLUETOOTH SMART LAMP WITH WIRELESS CHARGER

ASSEMBLY AND INSTALLATION INSTRUCTIONS  
**IMPORTANT, RETAIN FOR FUTURE REFERENCE:  
READ CAREFULLY**

## PARTS AND SPECIFICATIONS



## Product Specification:

### Wide Voltage

- AC 100-240V Power Input

### LED Information

- Colour Temperature : 2500K / 3000K / 4000K / 6000K
- No Flicker

### Finger Touch Switch

- Wood Surface Touch Switch
- High Sensitivity Touch Switch and Waterproof
- Turn Lamp ON/OFF/Mode Switch/Dimmer

### Wireless Charging Technology

- Compatible for Qi Wireless Charging Standard
- Support Apple iPhone 8, 8 Plus, X, XS, XS Max, XR and 11,12
- Support Android Phone Samsung, LG, HUAWEI OPPO, VIVO, MI...etc
- Transmission Power Output : 5W

### Smart Phone APP Support

- Support Apple iOS
- Support Android
- Bluetooth BLE Connect
- Light ON/OFF, Light Temperature Switch, Dimmer, Timer, Alarm

### USB Power Charge Function

- Socket Type: USB A Type Standard
- Power Output : 5V~1A (5V~2A,10W Max)

### Safety Certificates

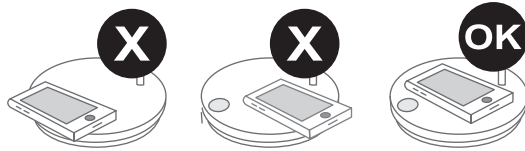
- Certificates: BQB, ETL, CB, CE, FCC, CCC, RoHS...etc

## Wireless Charger

Wirelessly charges any Qi-enabled smartphone

1. Lamp power plug to AC socket
2. Put Phone into Lamp Base Center

- Over-temperature protection
- Over-charging protection
- Over-current & over voltage protection
- FOD (Foreign object detection)



## Lamp Operation

### 1 Turn ON/OFF Lamp

- Lamp power plug to AC socket
- Lamp turn ON
- One Click Touch Pad for Lamp ON/OFF

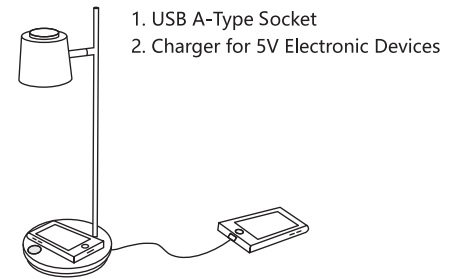
### 2 Switch Light Color

- Double Click Touch Pad for light color switch
- Cool White Light
- Daylight
- Warm White Light

### 3 Dimmer

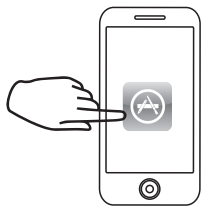
- Long Press Touch Pad for Dimmer
- Dimming brightness from 100% to 5%
- Release finger to stop dimming

## USB Power Output



## APP Installation

In order to track all of your workouts, you will first need to download the "T Smart Lamp" APP, Which is available on the Google Play Store and on the iPhone App Store.



OR



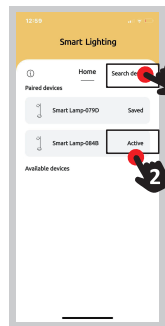
iPhone

Android



Install  
T Smart Lamp  
App

## APP Installation



1. Search the device.

2. Select the lamp to active in the paired list.

4: Click into the "APP Setting" page

7: Brightness adjust

8: Four pre-set modes of color temperature

3: Click into the "Search device" page

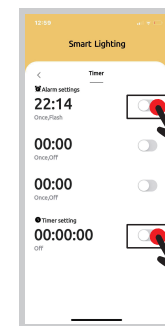
5: Click "connect" or "disconnect" the Lamp

6: Color temperature adjust

9: Turn ON/OFF the lamp with memory function, which will stay on the same brightness and color temperature like last time.

11. Setting the clock time to turn ON/OFF/Flash lamp.

12. Setting the amount of time to turn ON/OFF/Flash lamp.



## One Year Limited Warranty

www.thovas.net, warrants to the original retail purchaser, this product to be free of defects in material and workmanship for a period of up to one year from date of original purchase. Warranty applies only to the original purchaser of the product. Warranty is limited to consumer use and does not cover parts damaged due to normal wear, abnormal conditions, misuse, or accidents, and is limited to repair or replacement only. This limited warranty does not cover bulbs or batteries, or any part that may become defective due to mishandling. Warranty is effective only upon presentation of dated proof of purchase. Customers are responsible for all postage costs on returned merchandise. No shipping or handling charges will be reimbursed.

NOTE: This equipment has been tested and found to comply with the limits for a Class B Digital Device, pursuant to Part 15 of the FCC Rules. These limits are designed to provide reasonable protection against harmful interference in a residential installation. This equipment generates, uses, and can radiate radio frequency energy and, if not installed and used in accordance with the instructions, may cause harmful interference to radio communications. However, there is no guarantee that interference will not occur in a particular installation. If this equipment does cause harmful interference to radio or television reception, which can be determined by turning the equipment off and on, the user is encouraged to try to correct the interference by one or more of the following measures: - Reorient or relocate the receiving antenna. - Increase the distance between the equipment and receiver. - Connect the equipment to an outlet on a circuit different from that to which the receiver is connected. - Consult the dealer or an experienced radio/TV technician for help.

This equipment complies with Part 15 of the FCC Rules. Operation is subject to the following two conditions: 1) This device may not cause harmful interference. 2) This device must accept any interference received, including interference that may cause undesired operation.

Warning: Changes or modifications to this unit not expressly approved by the party responsible for compliance could void the user's authority to operate the equipment. This equipment should be installed and operated with a minimum distance of 20 cm between the radiator and your body.

## Limitations on Warranty Disclaimers

There are no warranties which extend beyond the description on the face hereof. This warranty gives you specific legal rights, and you may also have other rights which may vary from state to state.

# THOVAS®

For assistance with assembly or installation, parts and customer service, please do not return to retailer - contact THOVAS CUSTOMER SERVICE at:

mail: info@thovas.net

website: www.thovas.net



## Protecting the Environment - Recycle It

Responsibly recycling these products saves natural resources and protects human health through reuse of reclaimed resources. Please call your local waste management company for vendors in your immediate area.