

# Welcome



Lightcloud® Blue™

## Lightcloud Blue Controller

LCBLUECONTROL/D10/W

**WE'RE HERE TO HELP:**

1 (844) LIGHTCLOUD

1 (844) 544-4825

[support@lightcloud.com](mailto:support@lightcloud.com)

# Hello

Lightcloud Blue is a wireless lighting control system that allows you to control RAB Lighting's various compatible devices via an APP.

The Lightcloud Blue Controller is a remotely controlled switching and dimming device that can be installed into luminaires.

## **Product Features**

Wireless Control & Configuration

Switching up to 4.2A

0-10V Dimming

Power Monitoring

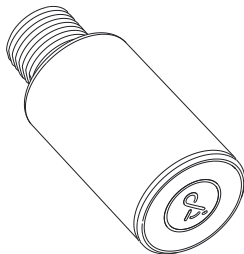
Local Control (W/O Gateway)

Lightcloud Ready (W/ Gateway and Wall Bridge)

*Patent Pending*

# Contents

Lightcloud Blue Controller



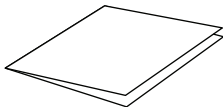
NPT Nut



Wire Nuts



Instruction Manual



# Specifications & Ratings

## PART NUMBER

LCBLUECONTROL/D10/W

## INPUT

120/277VAC, 50/60Hz

## CURRENT DRAW

<0.6W(Standby)–1W(Active)

## LOAD SWITCHING CAPACITY

LED/Fluorescent	Incandescent
120V~/1.7A/200VA	120V~/4.2A/500W
277V~/1.5A/400VA	277V~/4.2A/1200W

## OPERATING TEMPERATURE:

-40°C to +50°C max temp

## DIMENSIONS:

1.3" (D) x 2.5" (L)

## WIRELESS RANGE

Line of Sight: 700 feet

Obstructions: 70 feet

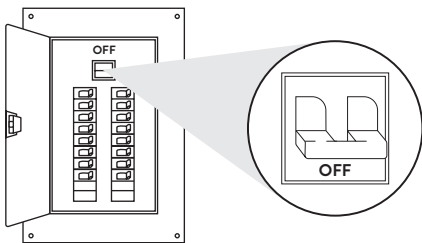
## RATINGS:

Lightcloud Blue Controller is IP66 rated and suited for outdoor or wet locations

# Setup & Installation

## 1 Turn off power

**⚠ WARNING**

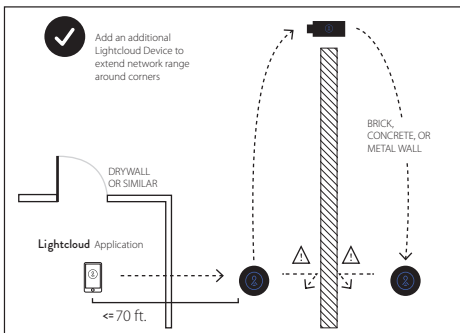


1a

## Find a suitable location

Use these guidelines when installing devices:

- If there is a clear line of sight between a Lightcloud Blue Controller and another Lightcloud Blue device they can be placed up to 500 feet apart.
- If a Lightcloud Blue Controller and another Lightcloud Blue device are separated by ordinary drywall construction, try to keep them within 70 ft. of each other.
- Brick, concrete and steel construction may require additional Lightcloud Blue devices to go around the obstruction.

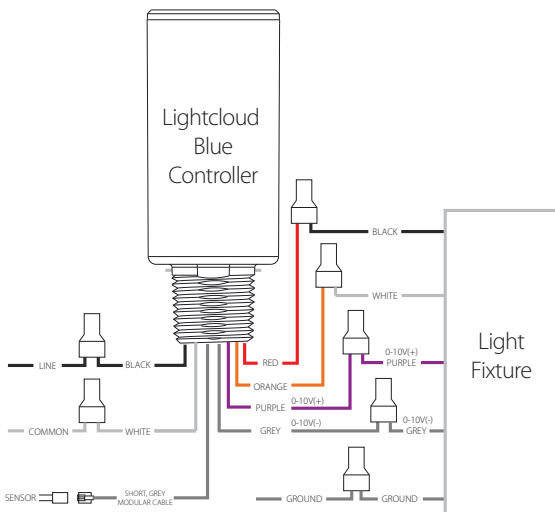


## 1b Optional - What You Need for Lightcloud System

Lightcloud Gateway and Wall Bridge is required to Connect with Lightcloud System

## 2 Install the Lightcloud Blue Controller in junction box

The Lightcloud Blue Controller can be mounted into a junction box, with the radio module always outside any metal enclosure. If no sensor is used then the second modular cable can be tied off and placed inside the fixture or box.



# Setup & Installation *(cont'd)*

## 3 Install Luminaire

Install the fixture with integrated Lightcloud Blue Controller to a constant power source.

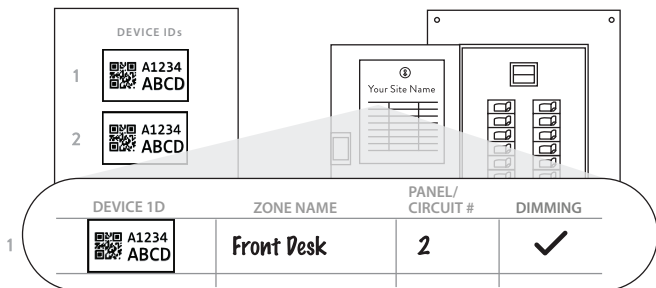
Do not place Lightcloud-controlled fixtures down circuit from any other switching devices such as switches, sensors, or time clocks.

## 4 Labeling your device

When installing devices, it's important to keep track of their Device IDs, installation locations, panel/circuit #, dimming function, and any additional notes. To organize this information, use Device Table.

### 4a Device table

The extra Device Identification stickers are provided that you can attach to your panel and one to hand off to a building manager. Device Identification stickers included with each device to a row, then write in additional information, such as Zone name, Panel/Circuit Number, and whether or not a Zone uses dimming.

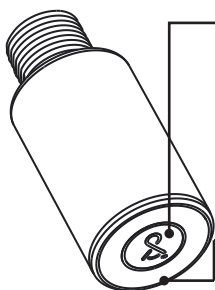


## Setup & Installation *(cont'd)*

### 5 Power up

### 6 Verify power and local control

Confirm Status Indicator is blinking red. Confirm local control using the Device Identification Button.



#### **DEVICE IDENTIFICATION BUTTON**

- Press once to highlight this device in the Lightcloud Application
- Press twice to toggle circuit on and off
- Press twice and hold to set dim level
- Press and hold for 10 seconds to remove this device from a Lightcloud network and into pairing mode

#### **SIGNAL INDICATOR**

Solid GREEN when connected to your Lightcloud network. Blinking RED when unprovisioned.

### 7 Commission your devices

Log on to [www.lightcloud.com](http://www.lightcloud.com) or call 1 (844) LIGHTCLOUD

#### 7a Enable Device Pairing Mode

Press and hold for 10 seconds to remove this device from a Lightcloud network and into pairing mode

# Setup & Installation *(cont'd)*

## 7b Commission

1. Download RAB Lightcloud Application from Apple Appstore or Google Play.
2. Tap the + button in the Lightcloud App to add Lightcloud Blue Controller which is in the pairing mode.
3. Simply follow the instruction in the App to complete the commission and setup.

## Functionality

### Configuration

All configuration of Lightcloud products may be performed using the Lightcloud web Application, or by calling RAB.

WE'RE HERE TO HELP:

**1 (844) LIGHTCLOUD**

1 (844) 544-4825

support@lightcloud.com

### Emergency default

If communication is lost, the Controller may optionally fall back to a specific state, such as turning the attached luminaire on.

[Warning: Any wires not in use must be capped off or otherwise insulated.]



#### FCC Information:

This device complies with Part 15 of the FCC Rules. Operation is subject to the following two conditions: 1. This device may not cause harmful interference, and 2. This device must accept any interference received, including interference that may cause undesired operation.

Note: This device has been tested and found to comply with the limits for Class B digital devices pursuant to Part 15 Subpart B, of the FCC rules. These limits are designed to provide reasonable protection against harmful interference in a residential environment. This equipment generates, uses, and can radiate radio frequency energy, and if not installed and used in accordance with the instruction manual, may cause harmful interference to radio communications. However, there is no guarantee that interference will not occur in a particular installation. If this equipment does cause harmful interference to radio or television reception, which can be determined by turning the equipment of and on, the user is encouraged to try and correct the interference by one or more of the following measures:

- Reorient or relocate the receiving antenna.
- Increase the separation between the equipment and receiver.
- Connect the equipment into an outlet on a circuit different from that to which the receiver is connected.
- Consult the dealer or an experienced radio/TV technician for help.

To comply with the FCC's RF exposure limits for general population / uncontrolled exposure, this transmitter must be installed to provide a separation distance of at least 20 cm from all persons and must not be co-located or operating in conjunction with any other antenna or transmitter.

**CAUTION:** Changes or modifications to this equipment not expressly approved by RAB Lighting may void the user's authority to operate this equipment.



Lightcloud is a commercial wireless lighting control system. It's powerful and flexible yet easy to use and install.

**Learn more at [lightcloud.com](http://lightcloud.com)**

1(844) LIGHTCLOUD  
1(844) 544-4825  
[support@lightcloud.com](mailto:support@lightcloud.com)

**RAB<sup>®</sup>**

© RAB Lighting, Inc  
170 Ludlow Avenue Northvale, NJ 07647  
Custom manufactured in China