



▶ To read codes from a vehicle:

1. Press **Read Codes** from Select Diagnostic Function menu. A code list including code number and its description displays. The red icon  means there is help information available for the code. The green icon  means there is freeze frame available.

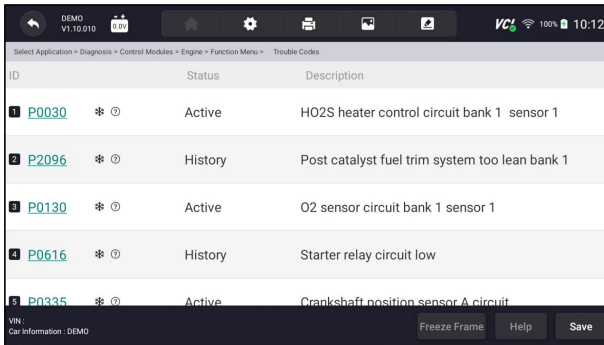


Figure 9-10 Sample Trouble Code Screen

- **Freeze Frame** - select one fault code from the code list and click **Freeze Frame** button at the bottom bar. The screen will display freeze frame detail data, a snapshot of critical vehicle operating conditions automatically recorded by the on-board computer at the time of the DTC set. It is a good function to help determine what caused the fault.

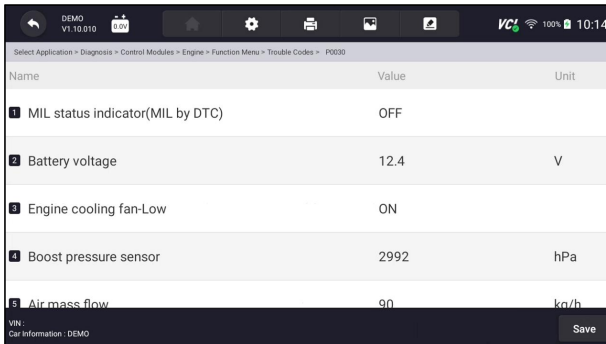


Figure 9-11 Sample Freeze Frame Screen

- **Help** - select one fault code from the code list and click **Help** button on the screen. The screen will display the detailed descriptions about the fault code and repair guide.

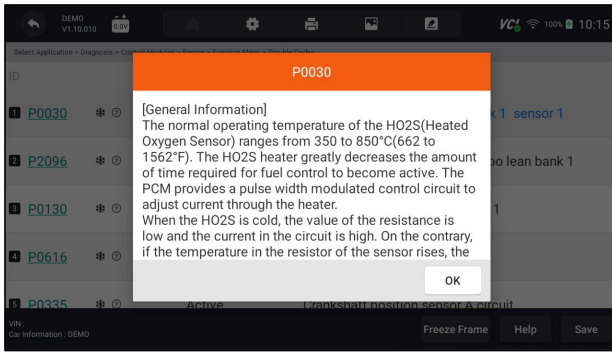




Figure 9-12 Sample DTC Help Screen

2. Slide up and down to view additional information when necessary.
3. Press **Save** to store DTC information. Press  to print the information if need be. Press  to exit.

9.2.2 Clear Codes

Clear Codes menu lets you to clear all current and stored DTCs from a selected control module. Also it erases all temporary ECU information, including freeze frame, so make sure that the selected system is completely checked and serviced by technicians and no vital information will be lost before clearing codes.

NOTE

- To clear codes, make sure that the ignition key is switched to ON with the engine off.
- Clear Codes does not fix the problem that caused the fault! DTCs should only be erased after correcting the condition(s) that caused them.

 To clear codes:

1. Press **Clear Codes** from Select Diagnostic Function menu.

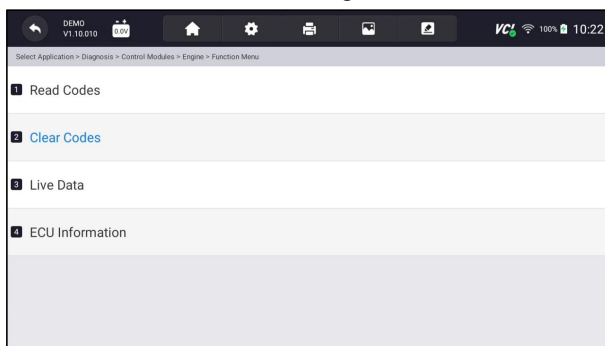


Figure 9-13 Sample Function Menu Screen

2. Follow the on-screen instructions and answer questions about the vehicle being tested to complete the procedure.
3. Check the codes again. If any codes remain, repeat the Clear Codes steps.

9.2.3 Live Data

Live Data menu lets you view real time PID data in text and plot formats, learn good sensor data and compare them with faulty data, and record live data from a selected vehicle electronic control module.

There are two ways to select the PID data of control module:

- All Data
- Custom List

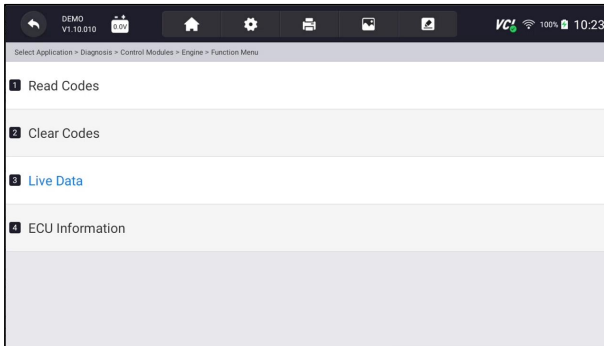


Figure 9-14 Sample Function Menu Screen

9.2.3.1 All Data

All Data menu lets you view all live PID data from a selected control module.

- ▶ To view all live PID data:
1. Press **Select ALL** for select all live PID data and press **Deselect ALL** to deselect all items.

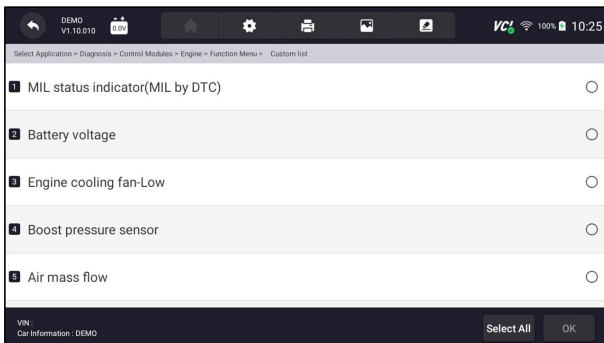


Figure 9-15 Sample Function Menu Screen

- Press **OK** to complete the selection and all readings will be displayed in text format by default.

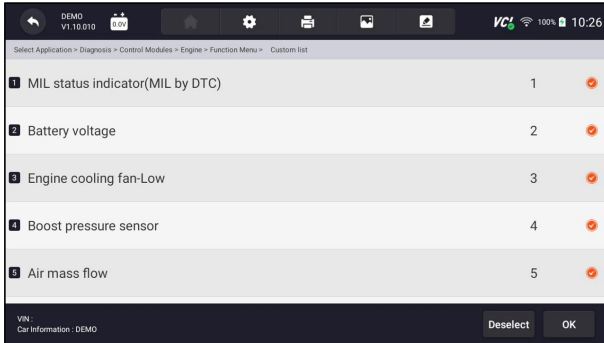


Figure 9-16 Sample Live Data Selection Screen

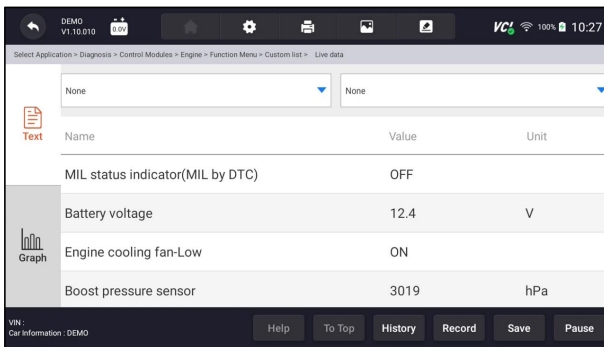


Figure 9-17 Sample Live Data Screen

Name	Description
Help	To provide help information of a PID
To Top	To move a data line to the top of Data List screen
History	To view the previous live data records or test reports
Record	To make record of live data
Save	To save live data of current frame
Pause	To stop recording live data

Table 8-1 Live Data Screen Button Screen

- Learn Mode:** gives you the ability to learn good live sensor data values during idle, KEKO, acceleration, deceleration, part load and heavy load on each vehicle comes into your shop and records them for future reference. Click the dropdown list at the upper left of the screen to enter to choose a working condition to learn.

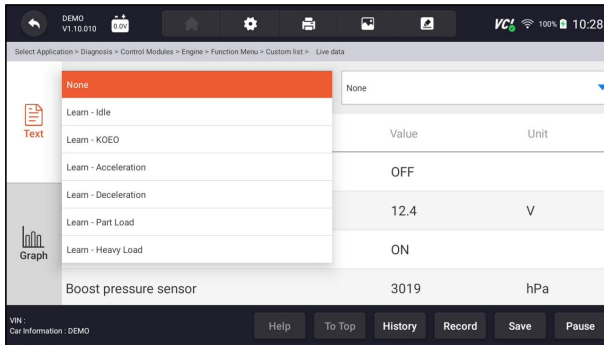


Figure 9-18 Sample Learn Mode Screen

- **Compare Mode** - If that vehicle comes in is with a problem, you can easily compare the faulty sensor and parameter readings to the good readings, and you will be alarmed when a faulty sensor reading is detected.

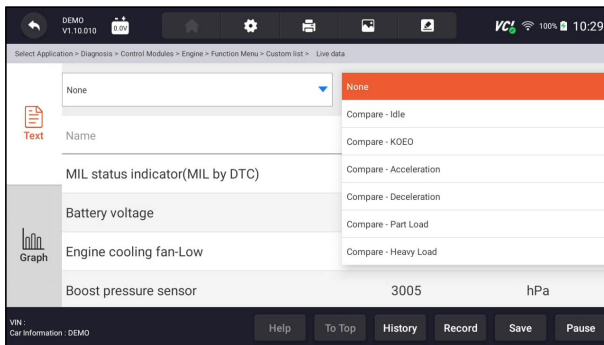


Figure 9-19 Sample Live Data Screen

3. Swipe the screen up and down to view additional information when necessary.
4. To move a data line to the top of Data List screen, just tap the line to select and then press the button **To Top**. To view data records or test reports, and press the button **History**. To make records of live data, just tap the button **Record**, and press **Pause** to stop recording at any time. To save the data, tap the **Save** icon.
5. To view live PID in graph format, press the tab **Graph**, and the plot displays. To view another PID plot, tap the name of a plot and a list of available PIDs display. Select one from the dropdown box and the plot changes to the newly selected PID.

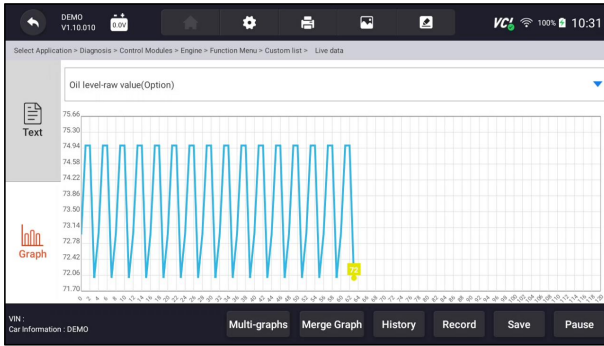


Figure 9-20 Sample PID Graph Screen

- **Multi-graphs:** displays the parameters in waveform graphs, giving you the ‘real picture’ of what’s going on in the vehicle. You can view up to 4 parameter graphs simultaneously.

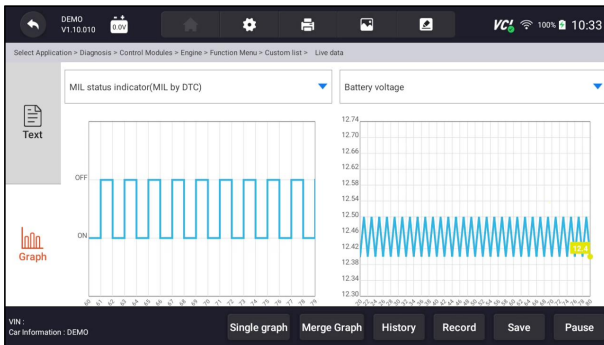


Figure 9-21 Sample Multi-graphs Screen

- **Merge Graph:** merges multiple PID plots into one coordinate, so you can easily see how they affect each other, providing you with the most comprehensive and functional look at live data possible.



Figure 9-22 Sample Merge Graph Screen

9.2.3.2 Custom List

Custom List menu lets you to minimize the number of PIDs on the data list and focus on any suspicious or symptom-specific data parameters.

- ▶ To create a custom data list:
1. Press **Custom List** from the menu to display all available parameters from the selected control module.
 2. The custom data stream selection screen displays. Tap the lines you wish to select. The numbers showing on the right side indicates the order of selection and the live data will show as this order.

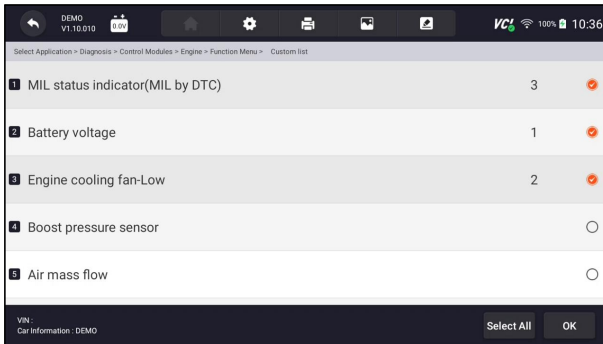


Figure 9-23 Sample Custom List Selection Screen

3. To deselect an item, tap the line again. Alternatively, tap **SELECT ALL** or **Deselect ALL** to select or deselect all items at once.
4. Press **OK** to complete the selection, and all selected items display.

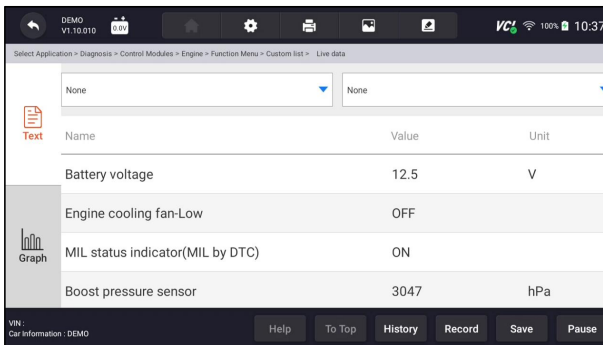


Figure 9-24 Sample Live Data Screen

9.2.3.3 Record data

Data Record is for recording the running data of the current control module.

- ▶ To Record Data
1. Press **Record** button to record all selected live data, then it will show the record time and frames.

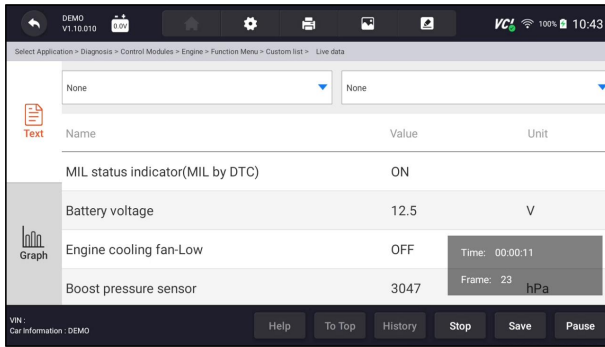


Figure 9-25 Sample Live Data Record Screen

2. Press **Stop** button to create a record, then press **OK** to save the record into Data Playback of Data Manager.

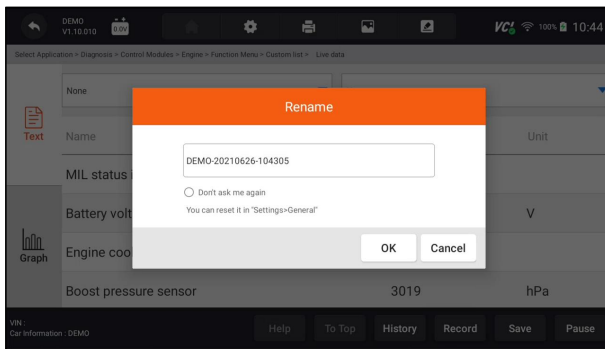


Figure 9-26 Sample To Stop Live Data Record Screen

9.2.4 ECU Information

ECU Information screen displays the identification data of the control module under test, such as the control module identification string and the control module coding.



To read ECU information:

1. Press **ECU Information** from Select Diagnostic Function menu.

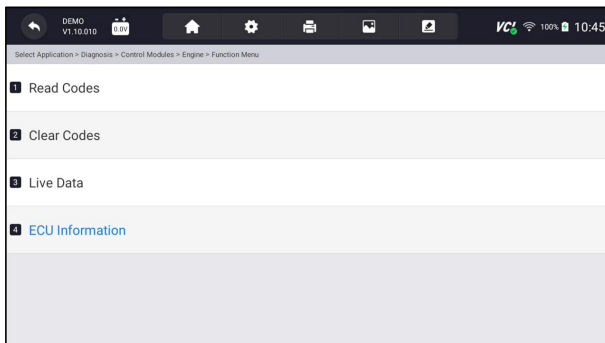


Figure 9-27 Sample Function Menu Screen

2. A screen with detailed information of the selected control module displays.

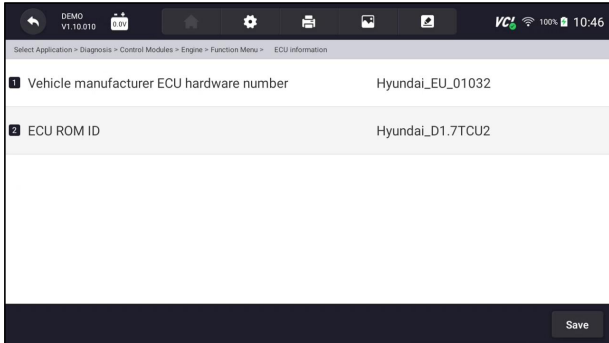




Figure 9-28 Sample ECU Information Screen

3. Press  to print the information if need be. Press  to exit.
4. Press **Save** to store ECU information screen and Press **OK** to complete save or Press **Cancel** to give up.

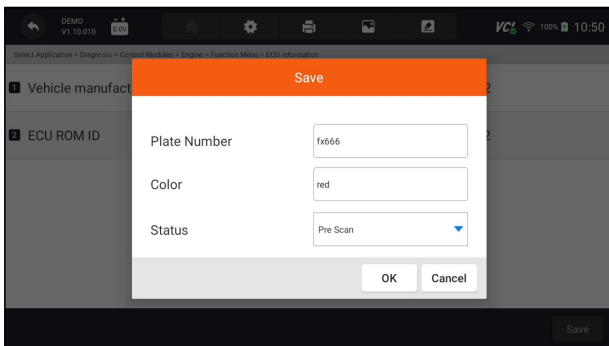


Figure 9-29 Sample ECU Information save Screen

9.2.5 Active Tests

Active Tests, also known as Actuator Tests, are bi-directional diagnostic tests on vehicle systems and component. The tests let you to use the scanner temporarily activate or control a vehicle system or component, and when you exit the test, the system/component returns to normal operation.

Some tests display a command to the operator. For example, if “Press Brake Pedal” displays, the operator has to press and hold the brake pedal and then continue. The sequence, number and type of tests are dictated by the control module.


On some systems, the actuator tests cannot be restarted until the ignition key is switched off for some time. Alternatively, briefly start and run the engine, shut down, turn the ignition to the run position, then re-initiate the actuator tests.

IMPORTANT

The tests activate a component, but they do not check if the component is working correctly. Make sure the components to be tested are in good condition and correctly mounted.


NOTE

Available tests depend on the control module under test and the vehicle itself.

- ▶ To start a test:
 1. Press **Active Test** from the menu and a list of available options displays.
 2. Select an option to start the test and live data of the selected test displays.
 3. Follow on-screen instructions to make proper selections and operations to complete the tests.
 4. Press  to exit.

9.3 Complaints

This function lets the customers sending back the complaints or feedback to Foxwell server with one touch during the diagnostic process and allows for quicker and more accurate fixes for diagnostic troubles and bugs.

- ▶ To make a complaint:
 1. Click  during the diagnostic process when face a failure.

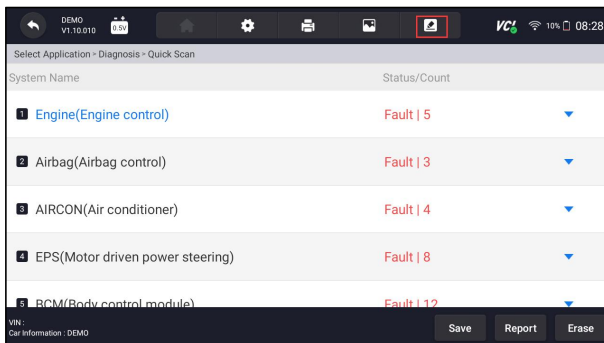


Figure 9-30 Sample Compliant Button Screen

2. Input the necessary information in the complaint sheet. And the data logging file will be collected automatically.

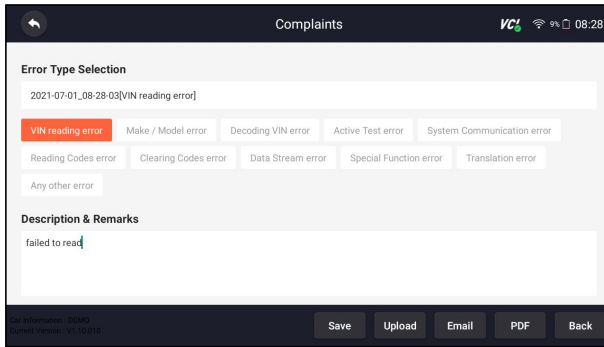


Figure 9-31 Sample Compliant Sheet Screen

3. Press **Upload** to send to Foxwell server directly when connecting with Wifi or Press **Save** to save the complaint and send to us later. (The saved complaint can be found at **Data Manager--Data Record** menu.) Press **Email** to share or **PDF** to print. And press **Back** to cancel.

10 Maintenance

This section gives brief instructions of the most commonly required service and maintenance operations. Typical service operation screens are a series of menu driven executive commands. Follow on-screen instructions to complete the operation.

Available service and maintenance options include:

- Oil Light Reset
- EPB Service
- Battery Configuration
- DPF Regeneration
- TPS/TBA
- SAS Calibration
- CVT
- Gear Learn
- TPMS Programming Service
- Injector coding
- ABS Bleeding
- Key Programming/ Immobilizer

10.1 Oil Reset

Oil Reset menu allows you to reset the service lamps on the instrument cluster. The Service Indicator System is designed to alert the driver when the vehicle is due for a service.

Oil service reset methods are determined by the vehicle being tested. Depending on the vehicle being tested, any of the following means displays:

- **Oil Reset with One Button** - applicable to GM models only. It offers quick and simple oil service reset with the click of one button.
- **Manual Reset** - almost all Asian vehicles and most American and European vehicles have mechanical oil service indicator reset. The service tool does not have to communicate with the vehicle being tested, but guides you to complete the service manually by providing step-by-step on-screen instructions.

When Manual Reset is selected and the vehicle being tested identified, a procedure opens on the screen. Scroll with arrow keys to read the entire procedure and performing the necessary steps as directed by the on-screen instructions. The exact order of the test operation steps may vary depending on the test vehicle. Be sure to follow all on-screen instructions. The manual reset procedure can be interrupted and aborted if the ignition key position is changed.

- **Auto Reset** - Auto Reset is a bi-directional communication procedure directed by the service tool. The service tool displays guides for you through the process. A number of instructions that require a response to continue display, including an option to clear any stored codes once the interval has been reset. Follow the on-screen instructions.

10.2 Electronic Parking Brake (EPB) Service

EPB Service menu allows you to perform the service and maintenance of brake systems, including deactivation and activation of the brake control system, bleeding brake fluid, opening and closing brake pads, and setting brakes after disc or pad replacement, on multiple brands of vehicles where electronic brake systems are fitted.

Some tests display a command to the operator. For example, if “Pressing Brake Pedal” displays, the operator has to press and hold the brake pedal and then continue. Actual tests vary by vehicle manufacturer, year, make.

Typical special test options include:

- **Deactivate/Activate SBC/EPB systems** - allows to deactivate brakes for further service or maintenance work on brake systems or activate brakes when service or maintenance work on brake systems are completed.
- **Adaptation on Audi A8** - allows to set new pad thickness of rear brakes calipers after changing brake discs & pads on Audi A8 models.
- **Replace hydraulic brake systems fluid/bleed brake system on Mercedes SBC vehicles** - allows to change brake fluid/bleed brake system.
- **Perform service reset and service position on BMW EPB vehicles** - allows to do the CBS reset and CBS correction for front brake and rear brake.

- **Perform activation/service work on Volvo PBM vehicles** – allows to perform installation check, applying parking brake, releasing parking brake, activating service mode and exiting service mode.
- **Reset memory on Toyota EPB vehicles** – allows to clear the learned memory of the EPB ECU.
- **Perform brake cable replacement and electric parking brake replacement** – allows to fit in or remove the brake cable safely, adjust brake cable's tension and calibrate the electric parking brake replacement.
- **Save and write clutch pedal programming on Renault EPB vehicles** – allows to save clutch pedal programming on Renault vehicles fitted with manual gearbox. After this command is activated, the tool allows to "flash" the electric parking brake unit with the saved clutch data.
- **Perform control function and reset function on Opel EPB vehicles** - allows to apply/release park brake cable service, provide park brake cable service replacement procedures and calibrate the parking brake systems after brake service.
- **Sensor calibration on Honda EPB vehicles** - allows to program the current output value of each sensor into the electric parking brake unit.
- **Provides parking brake unjam procedure and perform longitudinal accelerometer calibration on Land Rover EPB vehicles** - allows to drive the electronic park brake so it is unjamed in the releasing direction and then drive it into mounting position or the latching position; also allows to perform longitudinal accelerometer calibration.

WARNING

- EPB systems must be deactivated before carrying out any maintenance/ service work on the brakes such as changing of pads, discs and calipers.
- Use proper tools to avoid the risk of body injuries of mechanics and technicians and damage to the brake system.
- Make sure the vehicle is properly blocked after deactivation of the systems.

10.3 Battery Replacement (BRT)

BRT menu lets you to have new battery validated, clear faults from the dashboard and display current battery details of the vehicle such as Audi, BMW, Citroen, Peugeot, Seat, Skoda, Volvo, VW and Ford.

1. Replace the old battery with the new one. Ensure the key is not in the ignition.
2. Connect the scanner to the vehicle's 16 pin Data Link Connector (DLC) with the diagnostic cable.
3. Boost the device and select BRT; it will display all the vehicle makes available. Choose your vehicle make and follow the scanner instruction to start.

- **Sensor calibration on Honda EPB vehicles** - allows to program the current output value of each sensor into the electric parking brake unit.
- **Perform BRT on Citroen/Peugeot cars** - make several selections to confirm your car model, and then complete the battery replacement following on-screen instructions.
- **Perform BRT on Audi/VW/Seat/Skoda cars** - after communicating with vehicles, there's two options under Replace battery menu - **Validate battery** and **Display data**.
 - **Validate battery** menu lets you to recode the new battery to the vehicle's ECU and to turn off dashboard warning lights. The on-screen instructions would guide you step by step to complete the replacement.
 - **Display Data** menu lets you to check the battery information or battery replacement records
- **Perform BRT on BMW/Volvo cars** - after making several selections to confirm your vehicle model, you can select **Display data**, **Validate Battery** or **Clear codes** from Function menu.

10.4 Diesel Particulate Filter (DPF) Regeneration

DPF Regeneration menu lets you perform the DPF cleaning to clear the blockage through continuous burning of the particulates captured in the DPF filter. When a DPF regeneration cycle is completed, the DPF light automatically goes off.

10.5 Throttle Body Alignment (TPS/TBA)

It's very common to see a customer pull into the shop with a Volkswagen or Audi that just will not idle correctly. One of the possible causes is that the throttle position is not known. When the motion range is not known, the ECU simply has no idea where to set the throttle. The ECU must know the full range of motion of the throttle in order for it to properly control the engine. Using the throttle position sensors in the throttle body, the ECU learns the full open and full closed positions through various states (idle, part throttle, WOT) known as a Throttle Body Alignment (TBA).

10.6 Steering Angle Sensor (SAS) Calibration

SAS Calibration menu lets you perform calibration of the Steering Angle Sensor, which permanently stores the current steering wheel position as straight-ahead in the sensor EEPROM. On successful calibration of the sensor, its fault memory is automatically cleared.

10.7 Continuous Variable Transmission (CVT)

This function is used to reset the compensation code and initialize the ECT after a solenoid valve or valve body assembly has been replaced.

10.8 Gear Learning

The crankshaft position sensor learns crankshaft tooth machining tolerance and save to the computer to more accurately diagnose engine misfires. If tooth learning is not performed for a car equipped with Delphi engine, the MIL turns on after the engine is started. The diagnostic device detects the DTC P 1336 'tooth not learned'. In this case, you must the diagnostic device to perform tooth learning for the car. After tooth learning is successful, the MIL turns off.

After the engine ECU, crankshaft position sensor, or crankshaft flywheel is replaced, or the DTC 'tooth not learned' is present, tooth learning must be performed.

10.9 Tire Pressure Monitoring System Programming

TPMS Service menu allows you to check the tire sensor IDs from the vehicle ECU and to perform TPMS programming and reset after tires and/or TPM sensors are replaced and/or tires are rotated.

10.10 Injector Coding

Write injector actual code or rewrite code in the ECU to the injector code of the corresponding cylinder so as to more accurately control or correct cylinder injection quantity. After the ECU or injector is replaced, injector code of each cylinder must be confirmed or re-coded so that the cylinder can better identify injectors to accurately control fuel injection.

10.11 ABS Bleeding

Anytime the brake system is opened to replace components such as calipers, wheel cylinders, the master cylinder, or brake lines or hoses, air gets inside. The air has to be removed by bleeding the brakes if you want a firm brake pedal. Air trapped in the lines, calipers or wheel cylinders will make the pedal feel soft and spongy. Air is compressible, so when the brakes are applied any air bubbles in the system must first be compressed before the hydraulic fluid will transmit pressure to apply the brakes.

10.12 Key Programming/Immobilizer

The transponder key is an aftermarket option that can be programmed for a number of vehicles. Also known as a chip key or ignition key, this key offers a level of convenience and security for your car. If your car is equipped with a chip key system, only a programmed key can turn on the ignition in your vehicle.

11 Data Manager

Data Manager menu let you review stored screenshots and test reports, playback recorded live data and other saved files.

Typical menu options include:

- Image
- PDF
- Data Playback
- Data Record
- Report

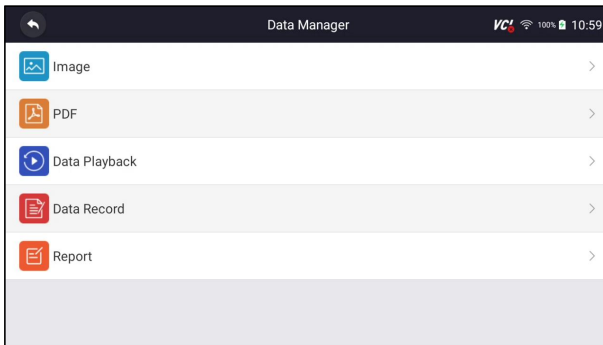


Figure 11-1 Sample Data Manager Screen

11.1 Image

Image option leads to screens for review of stored screenshots. In case a failure of NT819BT application or the Android system occurs, please just take a screenshot and send it to our team to help with the troubleshooting.

Typical menu options include:

- Diagnostic Screenshot
- System Screenshot

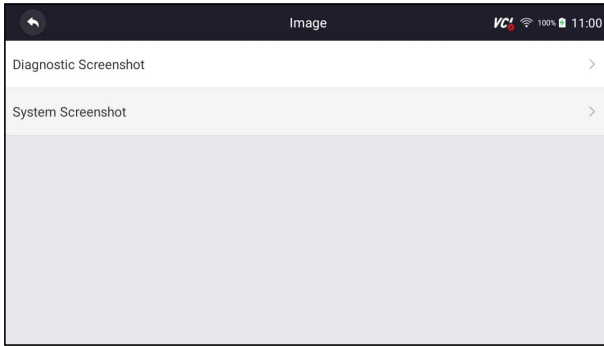



Figure 11-2 Sample Screenshots type

11.1.1 How to Save an Image

▶ To take a screenshot:

1. If want to save data of current screen, press  at the title bar to take a screenshot.

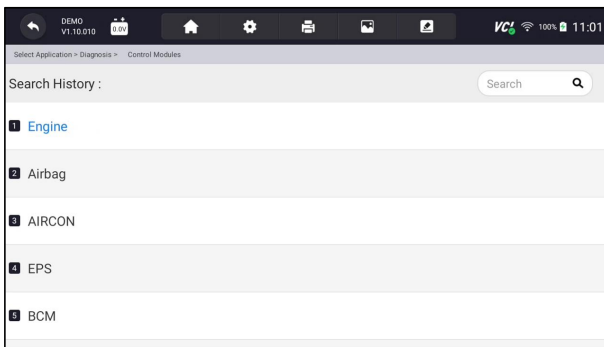


Figure 11-3 Sample Screenshot Screen

2. Add a description of the image, and press the OK to save or press cancel button to give up.

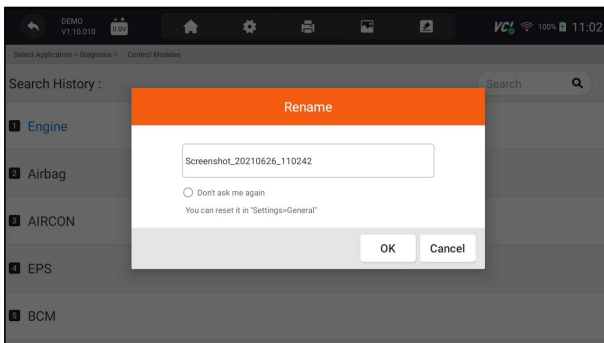


Figure 11-4 Sample Screenshot Screen

11.1.2 Review Image

- ▶ To review the screenshots:
1. Press **Data Manager** from home screen of NT819BT diagnostic application.
 2. Press **Image** from Data Manager.
 3. Press **Diagnostic Screenshot** for application menu screenshot or Press **System Screenshot** for system menu screenshot, then all available pictures will be displayed.

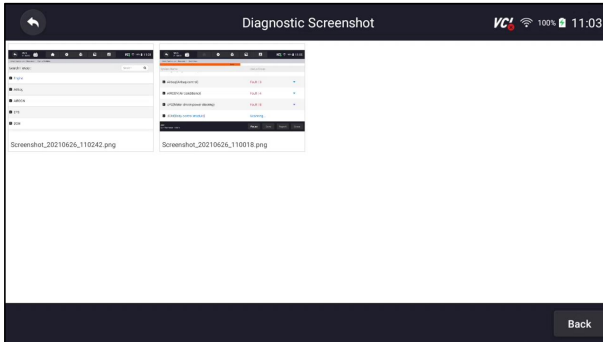


Figure 11-5 Sample Browse Picture Screen

4. Press any available picture for review.
5. To delete a picture, tap button **Delete** and answer **OK** to delete. Press **Print** to print the pictures and press **Rename** to change the picture name.

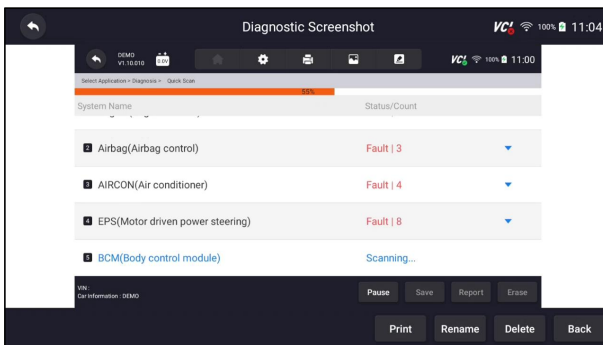


Figure 11-6 Sample Edit Picture Screen

6. Long press one of the pictures to edit all pictures like **Rename** or **Delete**.

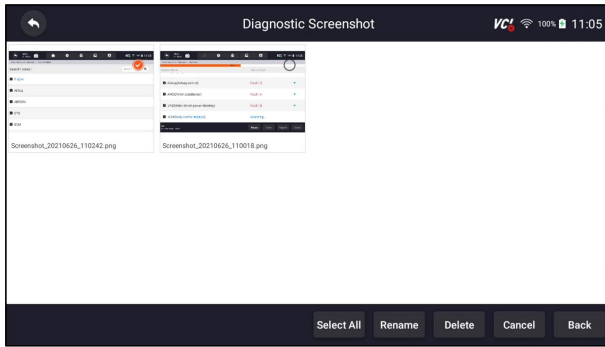


Figure 11-7 Sample All Pictures Edit Screen

11.2 PDF Report

PDF option leads to screens for review of the vehicle test reports. You just need to press the PDF icon on the test screen, add a description and press **OK** button to save.

11.2.1 How to Create a PDF Report

- ▶ To create a PDF report:
1. Press **Data Manager** from home screen of NT819BT diagnostic application.
 2. Press Report from Data Manager.
 3. Press any reports saved.

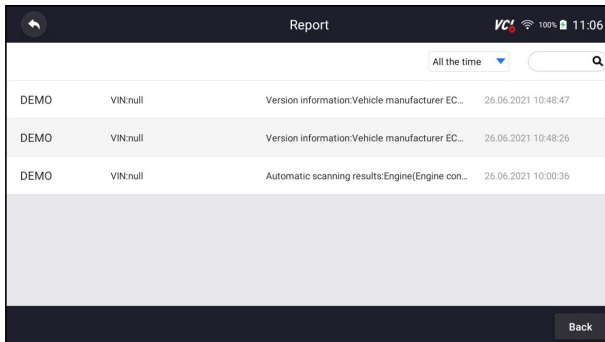


Figure 11-8 Sample of Reports Screen

4. Press Save to save changes. Press PDF to create PDF file.

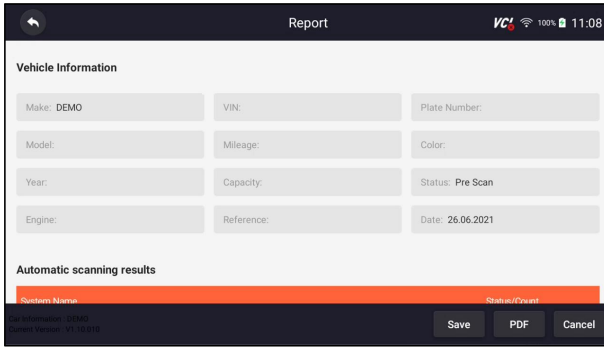


Figure 11-9 Sample of Report edit Screen

5. If press PDF, the PDF review screen will be displayed. Press **Print** to print the report or press **Email** to share the report.

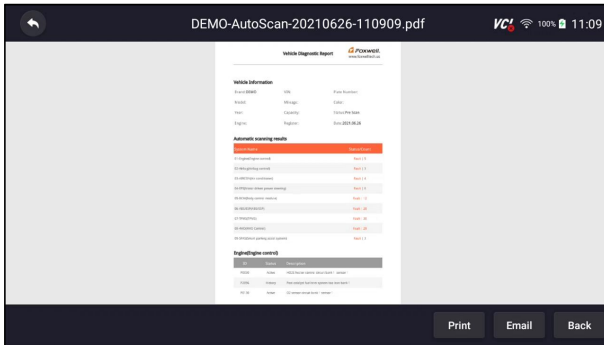


Figure 11-10 Sample of Report edit Screen

11.2.2 Review PDF Report

- ▶ To review the PDF reports:
 1. Press **Data Manager** from home screen of NT819BT diagnostic application.
 2. Press **PDF** and all available PDF files will be displayed.

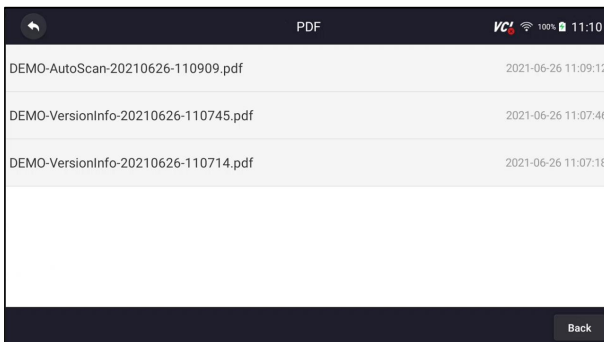


Figure 11-11 Sample Browse PDF Screen

3. Long press the screen to edit all PDF files like **Rename** or **Delete** the files.

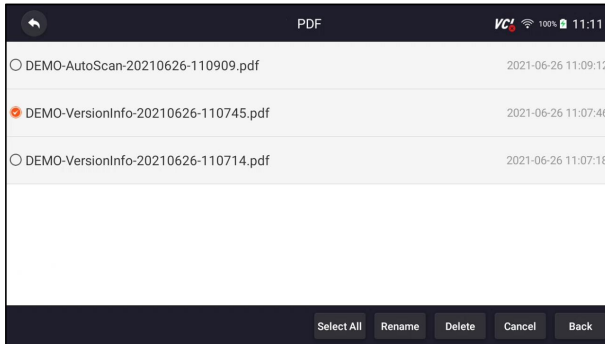


Figure 11-12 Sample Edit PDF Screen

11.3 Data Playback

The **Data Playback** option leads to screens for review of recorded live data. Playing back a recording is just like using the scan tool on a live vehicle. It let you review live data in text, graph and graph merging formats. Playback speed and direction (forward or reverse) can also be controlled.

- ▶ To review recorded live data:
 1. Press **Data Manager** from home screen of NT819BT diagnostic application.
 2. Press **Data Playback** and all available records display.

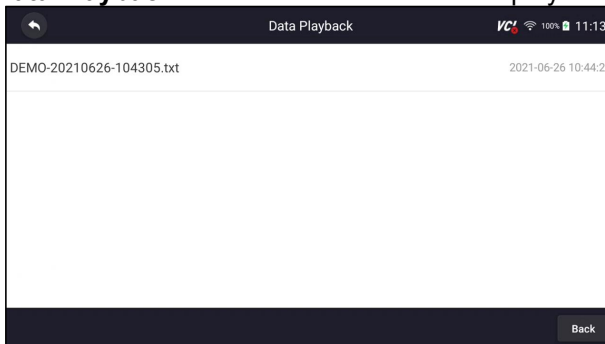


Figure 11-13 Sample Data Playback Records Screen

3. Press any records to view the details.

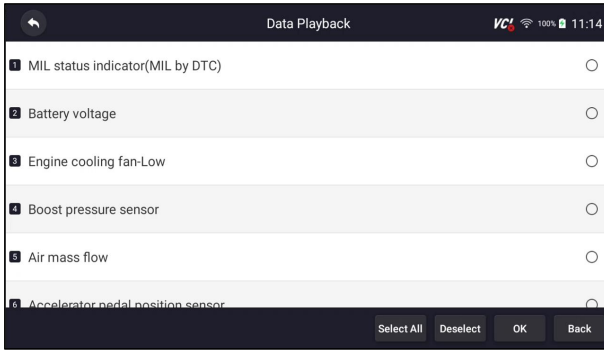


Figure 11-14 Sample Data Playback Selections Screen

- To view parameter graphs, press the **Graph** tab. And to merge the graphs, press the tab **Merge Graph** or press the tab **Multi Graph** to view multiple plots.

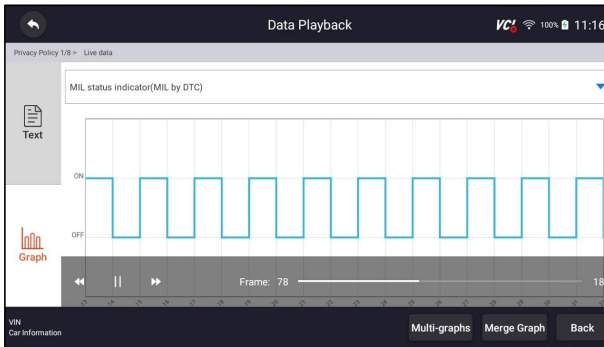



Figure 11-15 Sample Graph Screen

- To move forward or reverse back of the playing, just drag the progress bar forward or reverse. Press the  button to stop.
- Long press the record to **Rename** or **Delete** the records.

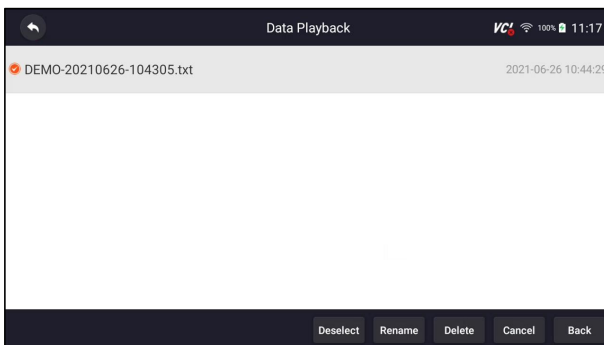


Figure 11-16 Sample Edit Data Playback Screen

12 Settings

This section illustrates how to program the scanner to meet your specific needs.

When Settings application is selected, a menu with available service options displays. Menu options typically include:

- Unit
- Language
- Font Size
- Module Sorting
- Sort Tiles
- Remote control
- Automatic Update
- System Settings
- General
- Uninstall Vehicle Software
- Clear app data
- Print Settings
- About

12.1 Units

Selecting **Unit** opens a dialog box that allows you to choose between Imperial customary or metric units of measure.

- ▶ To change the unit setup:
 1. Press **Settings** from home screen of the NT819BT diagnostic application.
 2. Press **Unit** and available unit system display.
 3. Select a unit system.

12.2 Language

Select **Language** opens a screen that allows you to choose system language.

- ▶ To configure system language:
 1. Press **Settings** from home screen of the NT819BT diagnostic application and select **Language**. Then all available language options display.
 2. Select your preferred language to change.

12.3 Font Size

This option allows you to change the font size of application.

- ▶ To change font size:

1. Press **Settings** from home screen of the NT819BT diagnostic application, and then select **Font Size**.
2. Select your preferred font size, then press **Confirm** to change, or press **Back** to give up.

12.4 Module Sorting

This option allows you to modify the display order of other modules except the diagnostic module in the home screen of NT819BT diagnostic application.

▶ To change module sorting:

1. Press **Settings** from home screen of the NT819BT diagnostic application, and then select **Module Sorting**.

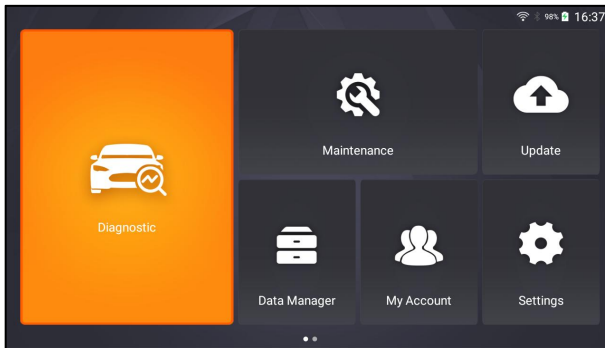


Figure 12-1 Sample Before the modification, the Update Module is displayed behind the Maintenance module

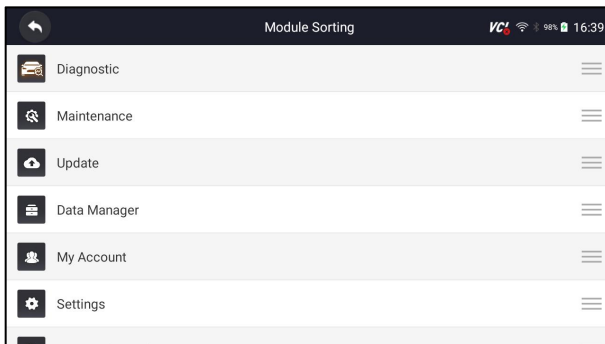



Figure 12-2 Sample Before the modification, the Update Module is displayed behind the Maintenance module

2. Long press the icon  on the right side of the module that needs to be modified for about 2 seconds, and then drag it up and down. The final position of the module is the same as the display order of the home screen.

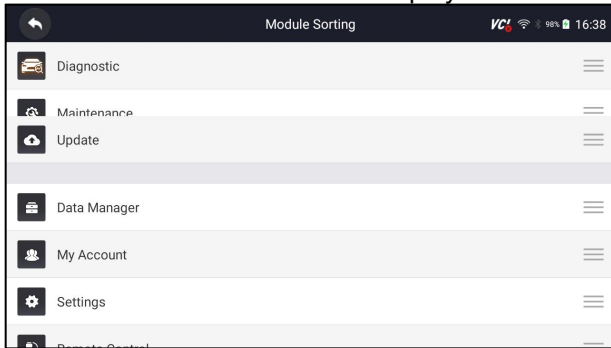


Figure 12-3 Sample Drag the Update module to the front of the Maintenance module

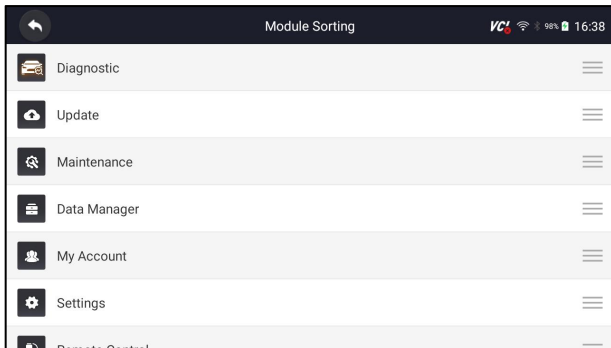



Figure 12-4 Sample Release and Dwell Update Module

3. Click  to display whether to apply the current settings interface, click OK to apply the current changes, click Cancel to discard the current changes.

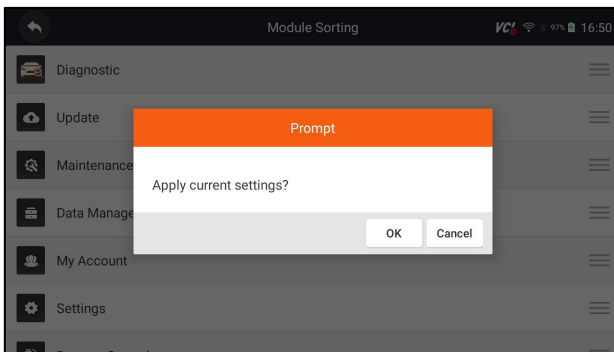


Figure 12-5 Sample Click OK to apply the current changes

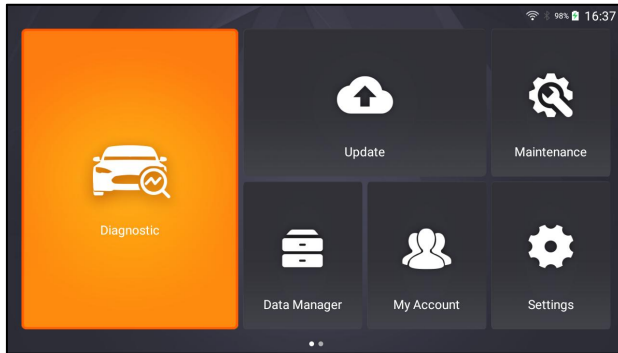


Figure 12-6 Sample After the modification,
the Update module is displayed in front of the Maintenance module

12.5 Sort Tiles

This option allows you to change the sort for Brand of vehicles. There are two sorting methods available by alphabet or by frequency of use.

- ▶ To change sort
 1. Press **Settings** from home screen of the NT819BT diagnostic application, and select **Sort Tiles**.
 2. Select your preferred sort order.

12.6 Remote control

This option allows you to select a tool of remote control. There are two remote tools available TeamViewer QuickSupport or AnyDesk.

- ▶ To change remote control
 1. Press **Settings** from home screen of the NT819BT diagnostic application, then select **Remote control**.
 2. Select your preferred tool.

12.7 Automatic Update

This option allows you to enable/disable automatic update notice. If it is enabled, an orange update mark will show on the upper right of the diagnostic software icon whenever there is a new version available.

12.8 System Settings

This option provides you a direct access to the Android system settings, like sound, display, system security and etc. Refer to Android documentation for more information.

12.9 General

This option lets you to turn on/off the prompt when saving a file or login & registration when started the scanner.

12.10 Uninstall Vehicle Software

This option allows you to uninstall the vehicle software installed in the scanner.

▶ To uninstall a vehicle software:

1. Tap **Settings** application on home screen of NT819BT.
2. Tap the **Uninstall Vehicle Software** option on the option list.
3. Choose the vehicle software you want to delete or choose **Select All**.

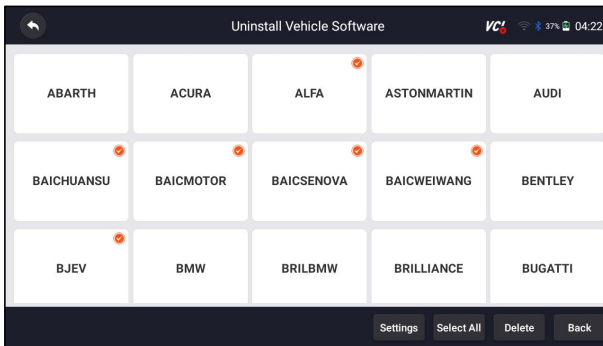


Figure 12-7 Sample Uninstall Vehicle Software Screen

4. Press **Cancel** to quit or and press **OK** to uninstall.

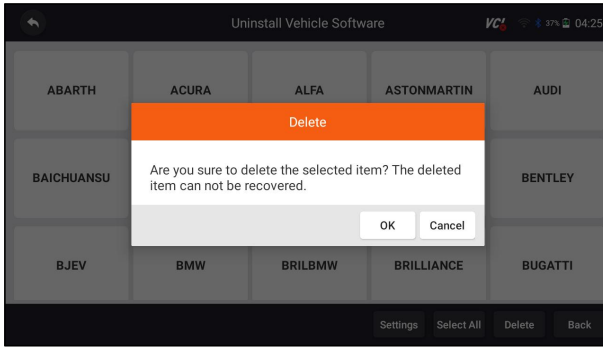


Figure 12-8 Sample Uninstall Vehicle Software Screen

12.11 Clear app data

Generally, after the application running for a period of time, some cache data will be generated. As time goes by, the cached data will become larger and larger, which will affect the operation of the device. This option allow you to clear the cache data of the app.

12.12 Print Settings

This option allows you to print any data or information anywhere and anytime either via PC network or Wi-Fi.

▶ To setup the printer connection:

1. Tap the **Settings** application on home screen of NT819BT.
2. Tap the **Printing Settings** option on the option list.

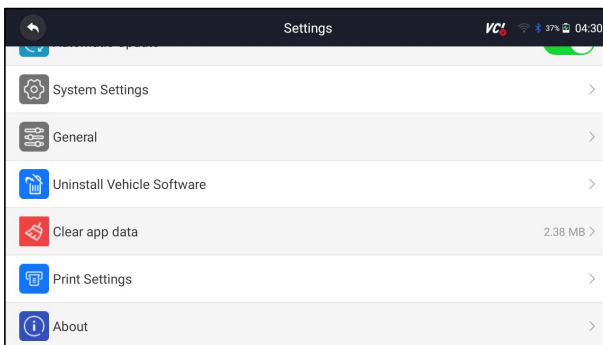


Figure 12-9 Sample Print Settings Screen

3. Tap **Print Plugin Manager** and turn on the Mopria Print Service, then NT819BT will search for available printers automatically.

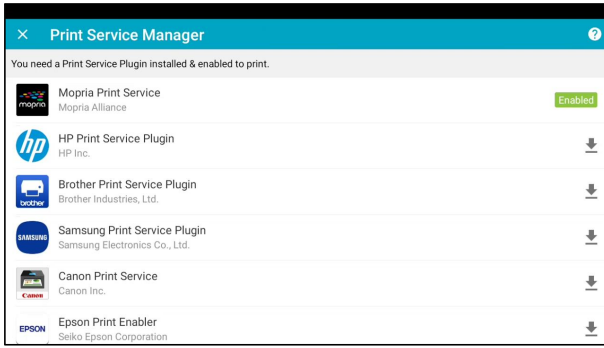


Figure 12-10 Sample Print Service Manager Screen

4. Select Mopria Print Service. Press  for return.

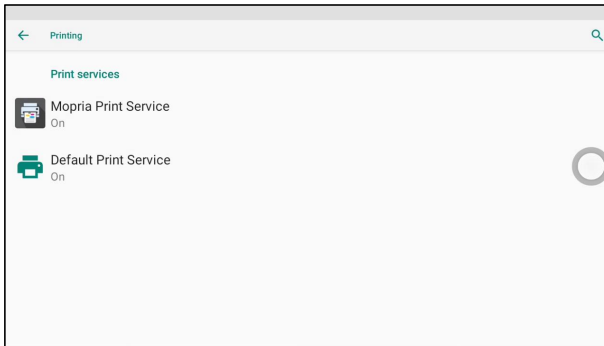


Figure 12-11 Sample Setting of Print Service Manager Screen

5. Choose the right printer. Press  for return.

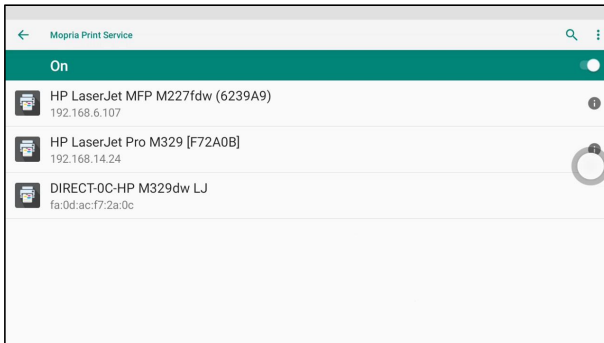



Figure 12-12 Sample of Printer Screen

6. Select a available printer, then press **PRINT TEST PAGE** button at the right-bottom. Press  for return.

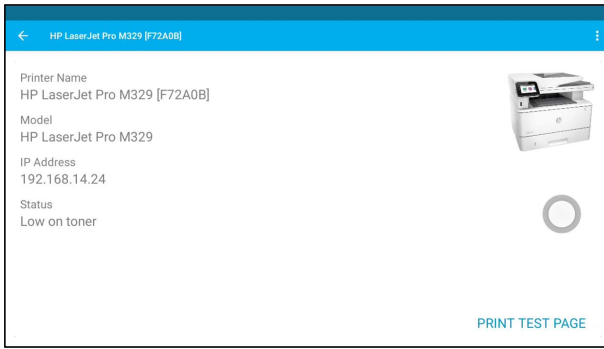



Figure 12-13 Sample of Printer test

7. Choose the file or report you want to print and press the print icon . Click on the red marked part to select an available printer. Click the blue marked part to make more settings for the printer, such as paper size, number of copies, etc.

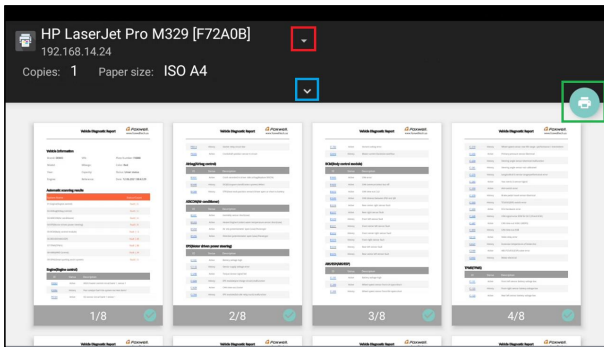


Figure 12-14 Sample of File Printing Screen

NOTE

1. Please make sure the printer and the NT819BT in the same Wi-Fi or Network when printing.
2. If Mopria Print Service driver can't work for your printer, please download the driver to work for your printer on Print Service Manager.

12.13 About

Selecting **About** option opens a screen that shows information about the NT819BT, such as serial number, hardware and software version and etc.

- ▶ To view information of your scan tool:
 1. Press **About** from home screen of the NT819BT diagnostic application.
 2. A screen with detailed information of the scanner displays.

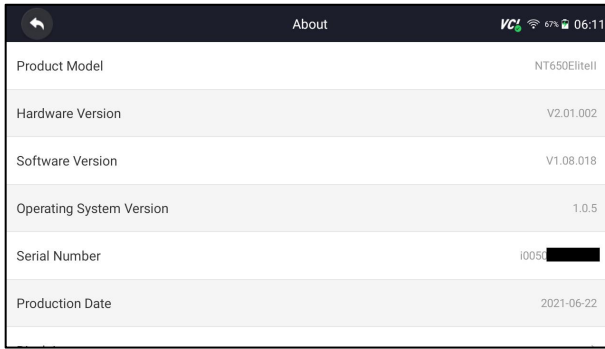



Figure 12-15 Sample Tool Information Screen

13 Remote Support

Remote Control enables you to get remote support from Foxwell with TeamViewer when you have issues with Foxwell products.

There are two remote control tools TeamViewer QuickSupport and Any Desk. About how to set the tool of default, please refer to 12.5 Remote control.

▶ To use QuickSupport for to remote control:

1. Click the **Remote Control** icon on the main menu of the NT819BT to start TeamViewer QuickSupport. Press  for return.

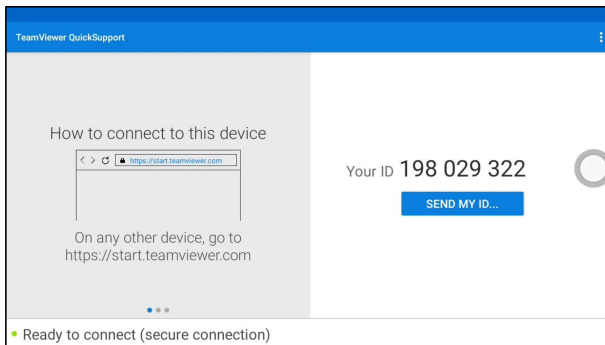


Figure 13-1 Sample QuickSupport Screen

2. Send your ID to us to let our team to take control your tablet.

This device complies with part 15 of the FCC Rules. Operation is subject to the following two conditions: (1) this device may not cause harmful interference, and (2) this device must accept any interference received, including interference that may cause undesired operation.

Any changes or modifications not expressly approved by the party responsible for compliance could void the user's authority to operate the equipment.

NOTE: This equipment has been tested and found to comply with the limits for a Class B digital device, pursuant to Part 15 of the FCC Rules. These limits are designed to provide reasonable protection against harmful interference in a residential installation. This equipment generates, uses and can radiate radio frequency energy and, if not installed and used in accordance with the instructions, may cause harmful interference to radio communications.

However, there is no guarantee that interference will not occur in a particular installation.

If this equipment does cause harmful interference to radio or television reception, which can be determined by turning the equipment off and on, the user is encouraged to try to correct the interference by one or more of the following measures:

- Reorient or relocate the receiving antenna.
- Increase the separation between the equipment and receiver.
- Connect the equipment into an outlet on a circuit different from that to which the receiver is connected.
- Consult the dealer or an experienced radio/TV technician for help.

This equipment complies with FCC radiation exposure limits set forth for an uncontrolled environment. This equipment should be installed and operated with minimum distance 20cm between the radiator and your body.