



承认书

SPECIFICATION FOR APPROVAL

客户名称

CUSTOMER NAME: 富士伟业

产品名称

PRODUCT NAME: NT710 WIFI 天线

客户料号

CUSTOMER P/N: Z3B0I50WIFI

众成料号

ZC 料号 P/N: FC008-CA-93

REV:A

	MANUFACTURER SIGNATURE	CUSTOMER SIGNATURE
CHECKED BY:		
AUDITOR BY:		
APPROVED BY:		
DATE:	2023-11-30	



Contents

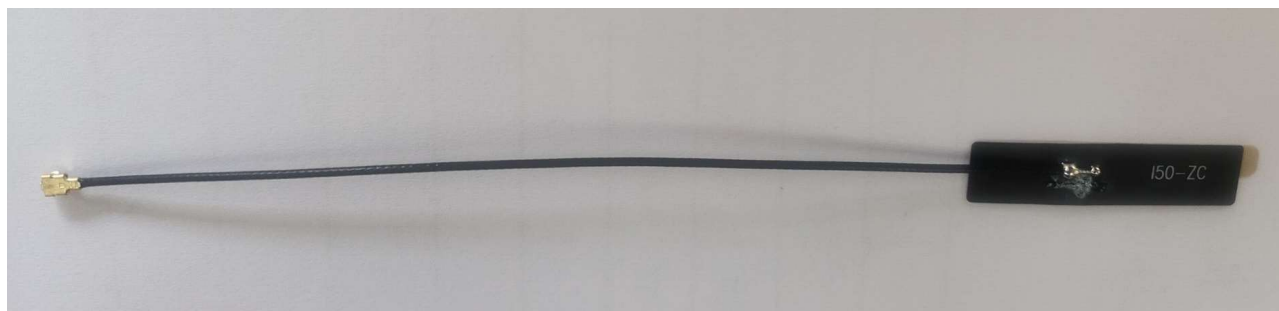
Item	Description
1. -----	产品图片
2. -----	规格表
3. -----	天线装配位置
4. -----	测试报告
5. -----	成品图



1. 产品图片



Antenna Picture



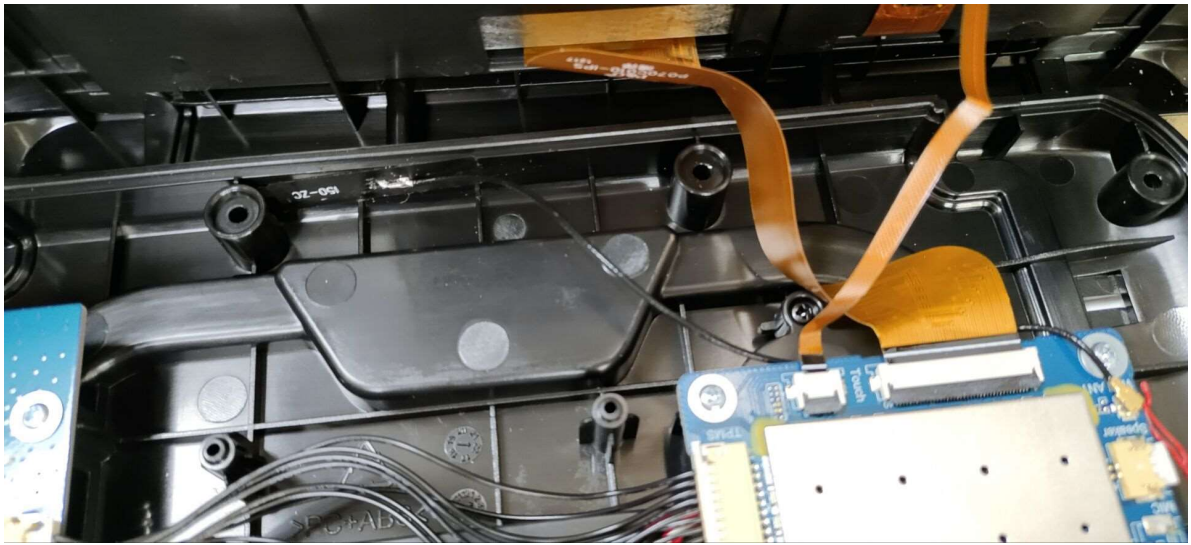
2. 规格表:

主要技术指标		Main technical specifications	
频率范围 (MHZ)	2400-2500	Frequency Range (MHZ)	2400-2500
特性阻抗 (Ω)	50	Impedance (Ω)	50
增益 (dbi)	2.88	Gain (dbi)	2.88
输出电压驻波比	<1.5	VSWR	<1.5
最大功率	10W	Admitted Power	10W
极化方式	垂直级化	Polarization	Linear Vertical
方向性	全向性	Radiation	Omni-directional
连接方式	1.13 MHF-1-Plug	Connector Type	1.13 MHF-1-Plug



物理性能		Physical Properties	
天线连接线外皮材料	聚全氟乙丙烯 FEP	Antenna connecting wire outer skin material	FEP
天线 FPCB 基材	聚酰亚胺 PI	Antenna FPCB substrate	PI
工作温度	-20° C ~ +70° C	Operating Temp	-20° C ~ +70° C
保存温度	-20° C ~ +70° C	Storage Temp	-20° C ~ +70° C

3. 天线装配位置:



4. 测试报告

4.1 Active test data

Item	Standard	Band	Channel	Frequency	最大功率	最小灵敏度	TRP	TIS
1	WIFI (AP)	WIFI_B (11M)	1	2412	21.07	-90.67	15.91	-85.51
2	WIFI (AP)	WIFI_B (11M)	6	2437	20.8	-90.6	15.56	-85.31
3	WIFI (AP)	WIFI_B (11M)	11	2462	20.72	-90.46	15.65	-85.39

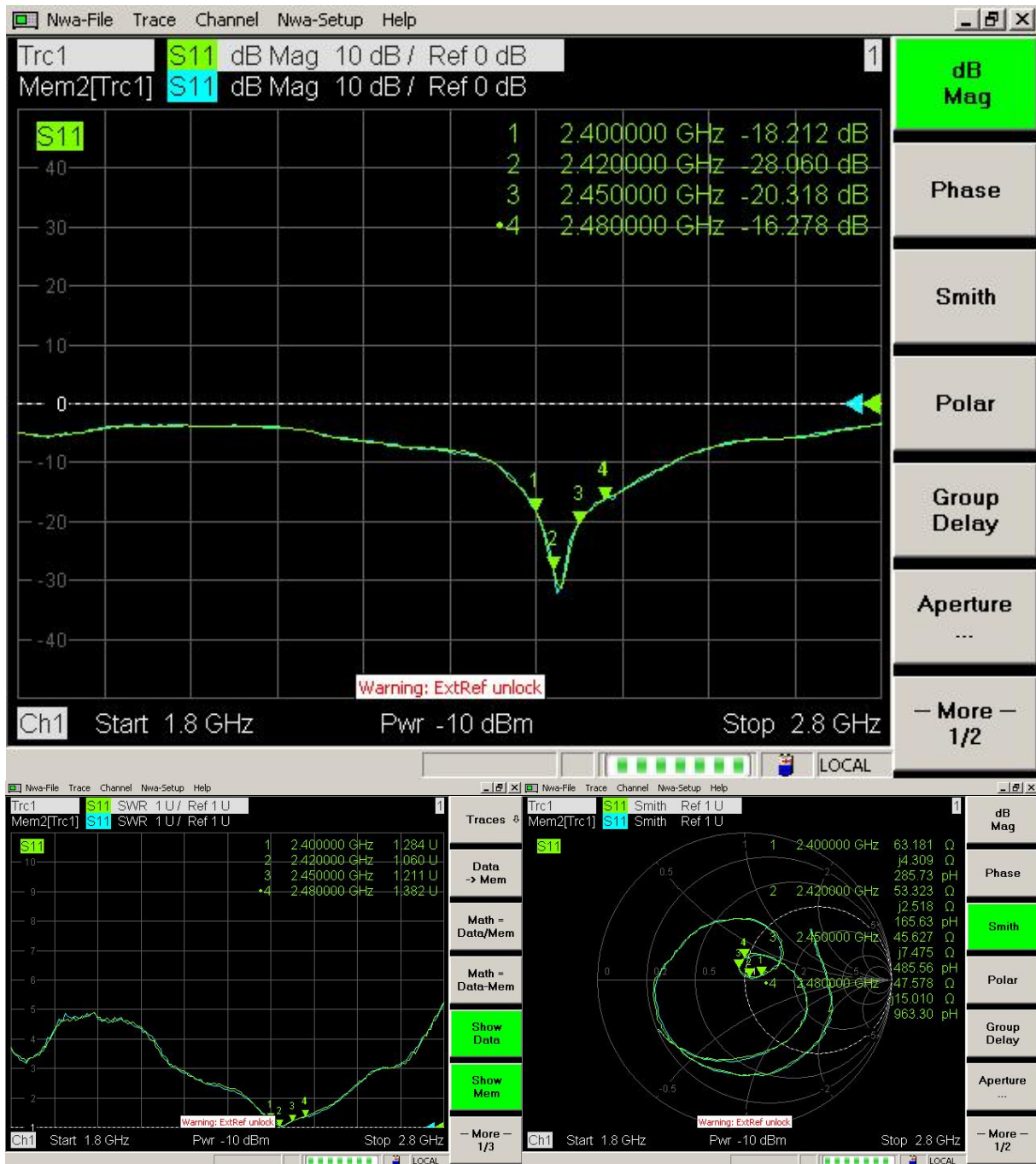
4.2 Passive parameters

Freq. (MHz)	2400	2410	2420	2430	2440	2450	2460	2470	2480	2490	2500
Gain (dBi)	1.67	1.8	2.13	2.56	2.53	2.85	2.88	2.45	1.99	1.98	1.95
Efficiency (%)	43.5	43.2	45.5	47.3	50.2	52.1	53.8	52.7	51.4	51.6	48.3



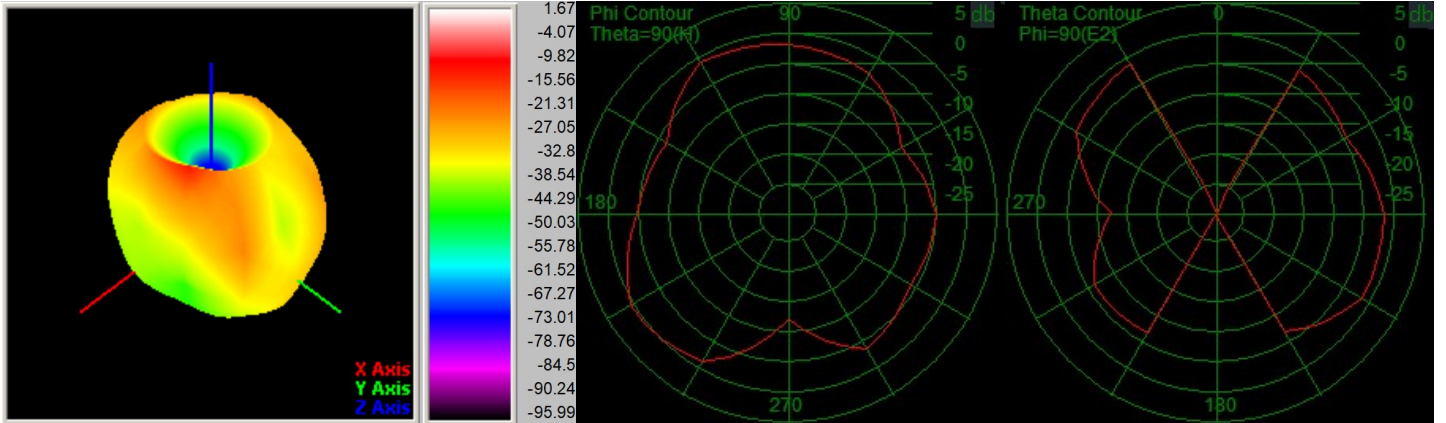
4.3 S Parameter

Frequency (MHz)	2400	2450	2480
Return Loss (dB)	-18.2	-20.3	-16.2
VSWR	1.28	1.21	1.38





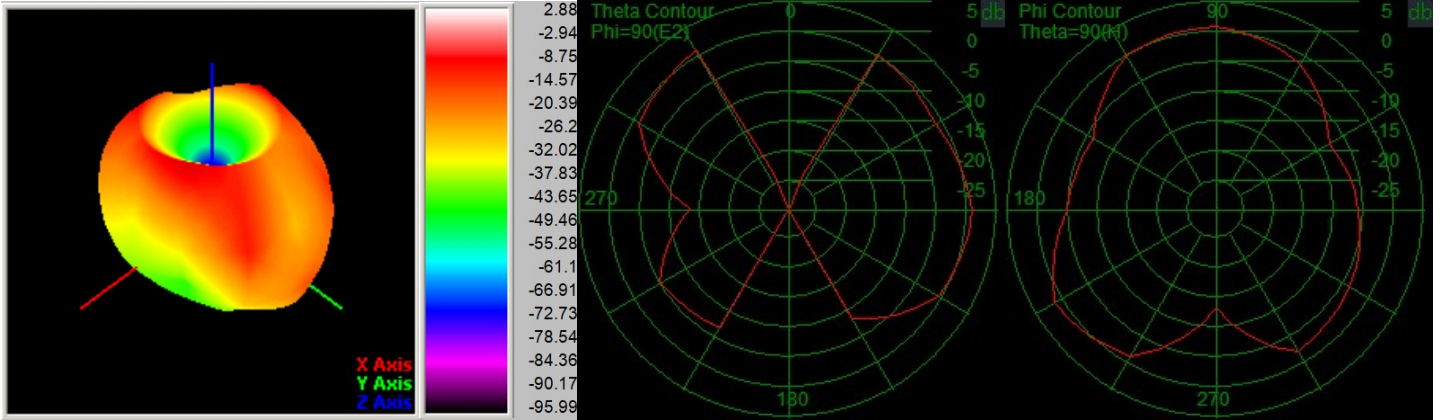
4.4 Radiation Pattern



Passive -Freq2400.00MHZ

Gain: 1.67(dBi)

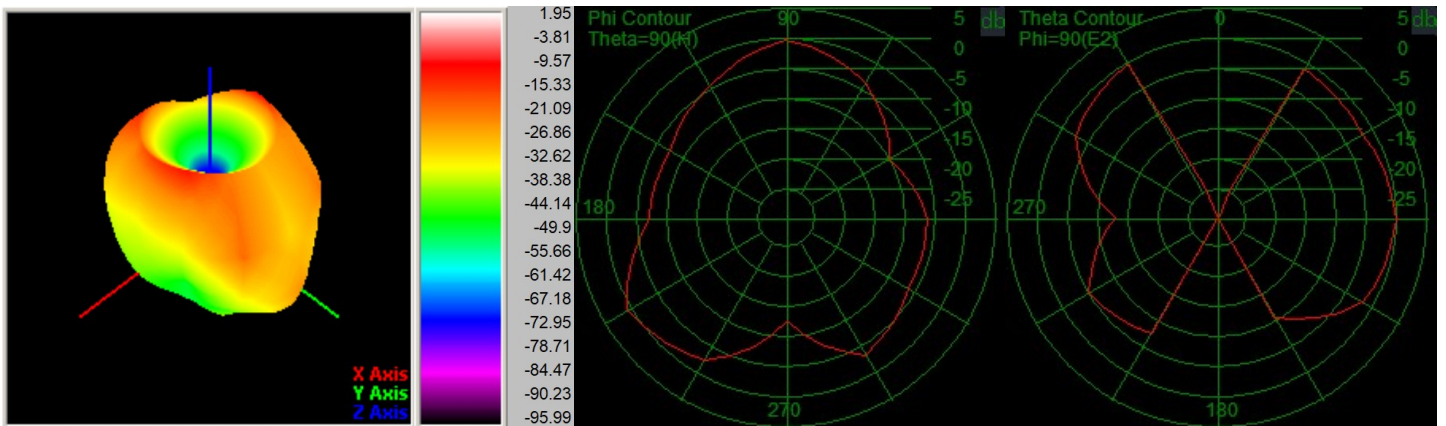
Efficiency: 43.5%



Passive -Freq2460.00MHZ

Gain: 2.88(dBi)

Efficiency: 53.8%



Passive -Freq2500.00MHZ

Gain: 1.95(dBi)

Efficiency: 48.3%



5. 成品图

