

# TrickSnake™ Remote Control Snake User's Manual

Model: #1042

Please retain this manual for future reference.

Color and contents may vary.

MADE IN CHINA

3+

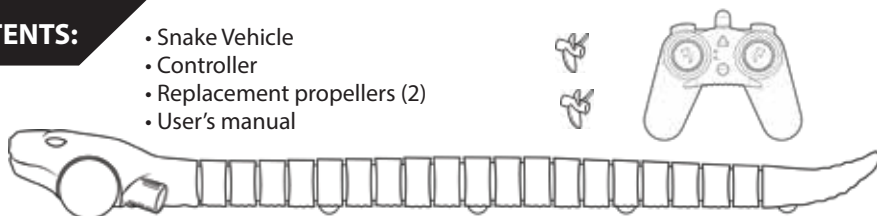
**WARNING:**  
CHOKING HAZARD - Small parts.  
Not for children under 3 years.

Consumer Information

1-951-371-5564  
support@treehouse-kids.com

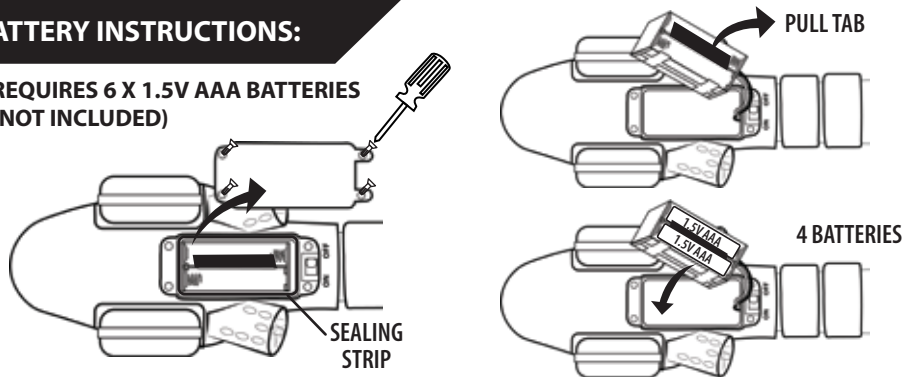
## CONTENTS:

- Snake Vehicle
- Controller
- Replacement propellers (2)
- User's manual



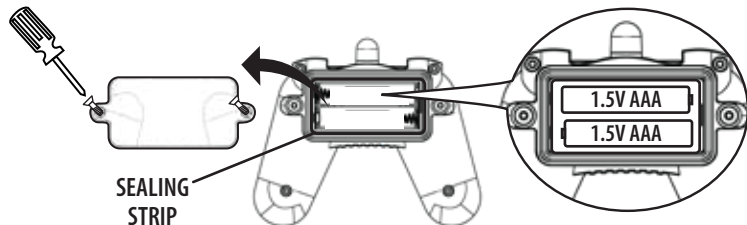
## BATTERY INSTRUCTIONS:

REQUIRES 6 X 1.5V AAA BATTERIES  
(NOT INCLUDED)



\*\*\*Only to be performed by an adult.\*\*\*

- Locate and open the battery compartment cover under the Snake head.
- Pull tab gently to access battery compartment.
- Insert 4 X 1.5V AAA batteries with polarities matching battery compartment markings.
- Close battery cover and secure screws.
- **Reminder: sealing strip MUST be in place to prevent water leaking into compartment.**



- Locate and open the battery compartment cover behind the Controller.
- Insert 2 X 1.5V AAA batteries with polarities matching the battery compartment markings.
- Close battery cover and secure screws.
- Lights start flashing alternatively to show pairing has begun.
- **Reminder: sealing strip MUST be in place to prevent water leaking to compartment.**

## TO PAIR:

1. Prepare and install batteries following the BATTERY INSTRUCTIONS.
2. Turn power ON for Snake. Push switch to "ON", located near battery compartment (Fig. 2).
3. Controller is automatically on after installing batteries. Lighting on Controller indicates different pairing status. See chart below.

Fig. 2

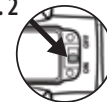
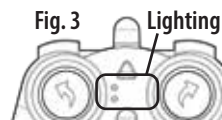


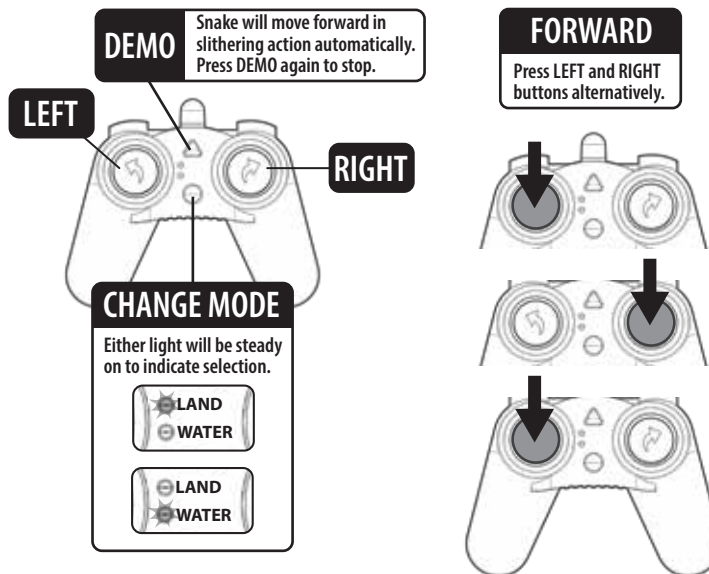
Fig. 3



LIGHTING	DESCRIPTION	STATUS	ACTION
Fig. 3a 	Both lights flashing alternatively.	Pairing in progress.	No action needed. Wait for pairing to complete.
Fig. 3b 	Red light (LAND) remains steady.	Pairing is successful.	It is ready to use in "LAND MODE" by default.
Fig. 3c 	Both lights turn off.	Pairing is NOT completed. Controller is in battery saver mode when idle for approximately 1 min.	Press any button on the Controller to reset. Lights should resume flashing alternatively. Refer to Fig. 3a.

## TO PLAY (same for land and water):

- After successfully pairing the Controller to the Snake, turn Snake over so that its belly is on the ground or water.
- Make sure the controller is in the intended mode (land or water).
- Have fun.



## CONTROLLER AUTO OFF

Controller light(s) will turn off automatically when idle for approx. 1 minute.

## SAFETY PRECAUTIONS:

\*\*\*Adult supervision is recommended.\*\*\*

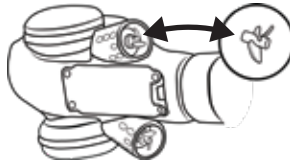
- Keep Snake within the recommended range of 100 ft. This range can be reduced by interference.
- Pay close attention to battery (not included) life. Only play in areas where it is easy and SAFE to retrieve Snake.
- Do NOT get hair, clothing, small body parts, or jewelry near propellers or wheels, especially in water mode.
- Fresh water or pool use only. No salt water.
- Do NOT use in a body of water with a strong current.
- Do NOT use in water that has plants, leaves or any other debris.
- Hold Snake at head. Holding the body may cause pinching.
- Never leave Snake unattended.
- Do NOT operate in hazardous areas.



## REPLACING PROPELLERS:

\*\*\*Only to be performed by an adult.\*\*\*

1. Remove batteries from Snake.
2. Pull off old propeller.
3. Push in new propeller.



## BATTERY WARNING:

- Do not mix alkaline, standard (carbon-zinc), or rechargeable batteries.
- Do not mix old and new batteries together.
- Do not dispose of batteries in fire. Leakage, explosion and/or personal injury may occur.
- Dispose of batteries properly.
- Always remove the batteries from the battery box when not in use for extended periods.
- Only an adult should charge rechargeable batteries.
- Only use batteries of the same or equivalent type as recommended.
- Only insert batteries with the correct polarity.

**NOTE:** This equipment has been tested and found to comply with the limits for a Class B digital device, pursuant to part 15 of the FCC Rules. These limits are designed to provide reasonable protection against harmful interference in a residential installation. This equipment generates, uses and can radiate radio frequency energy and, if not installed and used in accordance with the instructions, may cause harmful interference to radio communications. However, there is no guarantee that interference will not occur in a particular installation. If this equipment does cause harmful interference to radio or television reception, which can be determined by turning the equipment off and on, the user is encouraged to try to correct the interference by one or more of the following measures:

- Reorient or relocate the receiving antenna.
- Increase the separation between the equipment and receiver.
- Connect the equipment into an outlet on a circuit different from that to which the receiver is connected.
- Consult the dealer or an experienced radio/TV technician for help.

This device complies with part 15 of the FCC Rules. Operation is subject to the following two conditions: (1) This device may not cause harmful interference, and (2) this device must accept any interference received, including interference that may cause undesired operation.

Any changes or modifications not expressly approved by the party responsible for compliance could void the user's authority to operate the equipment.

This device contains licence-exempt transmitter(s)/receiver(s) that comply with Innovation, Science and Economic Development Canada's licence-exempt RSS(s). Operation is subject to the following two conditions:

1. This device may not cause interference.
2. This device must accept any interference, including interference that may cause undesired operation of the device.

## BASIC TROUBLE SHOOTING:

\*\*\*Only to be performed by an adult.\*\*\*

### Problem: Snake is not working

- Check that the batteries are installed correctly. The "+" and "-" are in their corresponding position.
- Check the condition of the batteries. Both Controller and Snake need full power or new batteries for best use.
- Check if batteries or contacts need to be cleaned. Dirt can cause batteries not to connect.
- Check if there is any radio signal interference. May need to play in another location.
- Controller may be out of range and needs to be closer to Snake.
- Remove batteries and check if there is any debris in the wheel or propeller area. Debris will cause Snake to not fully function.

### Problem: Pairing

- Check above steps.
- Turn off any other RC devices in area.
- Turn Snake on and off.

### Problem: Controller's lights are all off.

- Controller enters battery saver mode when idle for 1 minute. Press any button to wake the controller. Lights should be back on. Return to Fig. 3a.

### Problem: Works only in Water or Land Mode

- Remove batteries and check if there is any debris in the wheel or propeller area. Debris will cause snake to not fully function.
- Check again with new batteries.

### Problem: Snake body is disconnected

- Each segment is labeled and can be reconnected. Turn Snake over on its back. Snap back loose piece(s) following correct sequence. Sequence numbers are shown in between segments. See Fig. 4a and Fig. 4b.

Fig. 4a

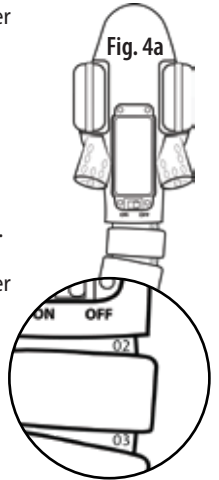


Fig. 4b

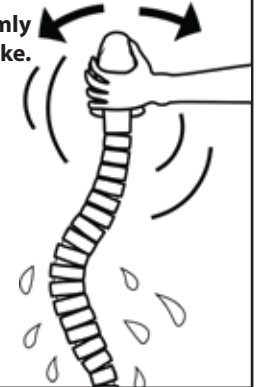


## CARE INSTRUCTIONS:

\*\*\*Adult supervision is recommended.\*\*\*

- Adult supervision is recommended.
- Remove batteries before cleaning.
- Always keep hands away from propellers.
- Rinse Snake off with clean water after use. Remove any debris.
- Do NOT use chemical cleaners. They may cause damage.
- Hold the Snake by the head to shake out excess water.
- Towel dry as needed.
- Make sure Snake is completely dry before storage.
- Store away from direct sunlight when not in use.

Hold firmly  
and shake.



Wash off with  
clean water



Model: #1042

Please retain this manual for future reference.

Color and contents may vary.

MADE IN CHINA

Consumer Information

1-951-371-5564  
support@treehouse-kids.com