

Samba Pad Pro

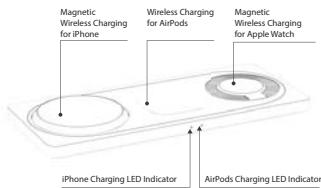
3-in-1 Wireless Charger



Apple MFI certified

User manual

Product Overview



what's in the Box:
 Samba Pad Pro Wireless Charger *1
 Power Adapter *1
 User manual *1

1.

Specifications

Technical Parameters

Input	9V = 2.7A
Output	10W+10W+2.5W

Adapter Model	PA27-US
Input	100-240V - 50/60 HZ 0.5A Max
Output	9V = 2.7A

compatibility

iPhone 14 Pro	Apple Watch Series 7
iPhone 14 Pro Max	Apple Watch Series 6
iPhone 14	Apple Watch SE
iPhone 14 Plus	Apple Watch Series 5
iPhone 13 Pro	Apple Watch Series 4
iPhone 13 Pro Max	Apple Watch Series 3
iPhone 13 mini	Apple Watch Series 2
iPhone 13	Apple Watch Series 1
iPhone SE (3rd generation)	AirPods Pro
iPhone 12 Pro	AirPods 3rd Generation
iPhone 12 Pro Max	Wireless Charging Case for AirPods
iPhone 12 mini	
iPhone 12	

2.

Connecting

1. Put the power adapter plug into the groove.



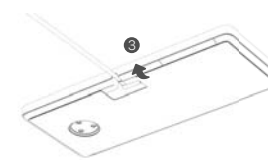
2. Insert the power adapter plug into the DC jack.



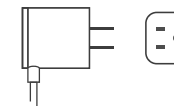
3.

Connecting

3. Rotate the cable into the groove.



4. Use the AC adapter to power the wireless charger.



4.

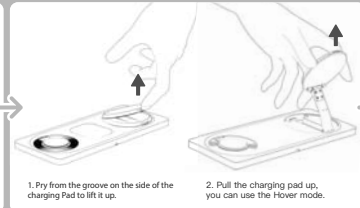
Connecting

5. Charge your devices.

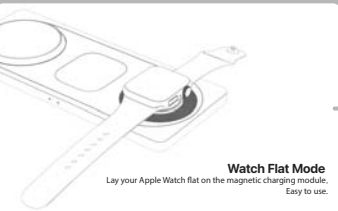


5.

iPhone Charging Mode Settings



Apple Watch Charging Mode Settings

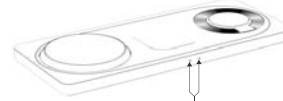


6.

7.

8.

LED Indicator



	iPhone Charging LED Indicator	AirPods Charging LED Indicator
Solid white	iPhone is charging	Air Pods is charging
Flashing	Metal detected or abnormal charging	Metal detected or abnormal charging

Important Safety Instructions

- Avoid dropping.
- Do not disassemble.
- Do not expose to liquids.
- Only use the original power adapter.
- This product is suitable for moderate climates only.
- The maximum ambient temperature during use of this product must not exceed 40°C.
- Open flame sources, such as candles, must not be placed on this product.
- Only use a dry cloth or brush to clean this product.

9.

Attention

- * Do not put anything else between your smartphone and the wireless charger such as credit cards, door keys, coins, metal, NFC cards, etc.
- * Make sure to place the device in the center of the charging pad. Improper placement may result in heat generation or non-charging.
- * Compatible only with iPhones with MagSafe.
- * Please use a MagSafe compatible case, or no case. Cases that are not MagSafe compatible will not provide enough magnetism for positioning.



Tips: The charging speed is related to the ambient temperature. For fast charging, please place the wireless charger in a cool and ventilated place. For example, a cool room, or near a fan or air conditioner. Do not expose it to direct sunlight or place it near hot objects. Such as electrical appliances, heating, fireplaces, etc.

10.

FCC Statement

This device complies with part 15 of the FCC Rules. Operation is subject to the following two conditions: (1) This device may not cause harmful interference, and (2) this device must accept any interference received, including interference that may cause undesired operation.

FCC warning:
Any Changes or modifications not expressly approved by the party responsible for compliance could void the user's authority to operate the equipment.

Note: This equipment has been tested and found to comply with the limits for a Class B digital device, pursuant to part 15 of the FCC Rules. These limits are designed to provide reasonable protection against harmful interference in a residential installation. This equipment generates uses and can radiate radio frequency energy and, if not installed and used in accordance with the instructions, may cause harmful interference to radio communications. However, there is no guarantee that interference will not occur in a particular installation. If this equipment does cause harmful interference to radio or television reception, which can be determined by turning the equipment off and on, the user is encouraged to try to correct the interference by one or more of the following measures:

- Reorient or relocate the receiving antenna.
- Increase the separation between the equipment and receiver.
- Connect the equipment into an outlet on a circuit different from that to which the receiver is connected.
- Consult the dealer or an experienced radio/TV technician for help.

This equipment complies with FCC radiation exposure limits set forth for an uncontrolled environment. This equipment should be installed and operated with minimum distance 20cm between the radiator & your body.



Model : W326

Manufacturer: Longgong Electronics(Shenzhen)Co.,Ltd.

Made in China