

USER MANUAL

tianhoo

EOS play

Bluetooth-Speaker



tianhoootech.com

IMPORTANT SAFETY INSTRUCTIONS

- Read these instructions – All the safety and operating instructions should be read before this product is operated.
- Keep these instructions – The safety and operating instructions should be retained for future reference.
- Heed all warnings – All warnings on the appliance and in the operating instructions should be adhered to.
- Follow all instructions – All operating and use instructions should be followed.

WARNING!

- **WARNING** –To reduce the risk of fire or electric shock, do not expose this apparatus to rain or moisture. The apparatus shall not be exposed to dripping or splashing.
- **WARNING** –do not cover.
- **WARNING** –only use attachments/accessories specified by the manufacturer (such as the exclusive supply adapter, battery etc). the plug is the main disconnect device and should be used as such. The disconnect device should remain readily accessible.
- **WARNING** – do not listen too close to the active loudspeaker.
- **WARNING** – do not listen for an extended period of time at a high sound pressure level.
- **WARNING** – do not attempt to remove the active loudspeaker chassis, there are no user serviceable parts.
- **DANGER** – of dropping the product.

MOISTURE AND HUMIDITY

- The active loudspeaker should be located in a place free from moisture and water.
- Do not use this apparatus near water
- Do not expose it to rain or dripping water. Do not splash water on it.

INSTALLATION

- Do not install near any heat sources such as radiators, heat registers, stoves, or other apparatus (including amplifiers) that produce heat.
- Do not block any ventilation openings. Install in accordance with the manufacturer's instructions.

CONNECTION

- Connect the active loudspeaker according to the instructions in the manual.
- Connect the active loudspeaker only to the correct mains voltage as shown on the equipment.
- Protect the power cord from being walked on or pinched particularly at plugs, convenience receptacles, and the point where they exit the apparatus.
- Use only power cables of the type specified in the operating instructions or as marked on the active loudspeaker.
- Unplug this apparatus during fulmination storms or when unused for long periods of time.
- Do not install in an area that impedes access to the power plug.
Disconnecting the power plug is the only way to completely remove power to the product and the plug must be readily accessible at all times.

CLEANING

- Clean only with dry cloth.

MAINTENANCE

- Refer all servicing to qualified service personnel. Servicing is required when the apparatus has been damaged in any way, such as power-supply cord or plug is damaged, liquid has been spilled or objects have fallen into the apparatus, the apparatus has been exposed to rain or moisture, does not operate normally, or has been dropped.
- **CAUTION:** These servicing instructions are for use by qualified service personnel only. To reduce the risk of electric shock, do not perform any servicing unless you are qualified to do so.

COMPLIANCE MARKS

Any changes or modifications not expressly approved by the party responsible for compliance could void the user's authority to operate this equipment.

This device complies with Part 15 of the FCC Rules. Operation is subject to the following two conditions:

*(1) This device may not cause harmful interference, and
(2) this device must accept any interference received, including interference that may cause undesired operation.*

*This device and its antenna(s) must not be co-located or operating in conjunction with any other antenna or transmitter.*NOTE:

This equipment has been tested and found to comply with the limits for a Class B digital device, pursuant to Part 15 of the FCC Rules.

These limits are designed to provide reasonable protection against harmful interference

in a residential installation. This equipment generates, uses and can radiate radio frequency energy and, if not installed and used in accordance with the instructions, may cause harmful interference to radio communications.

However, there is no guarantee that interference will not occur in a particular installation.

If this equipment does cause harmful interference to radio or television reception, which can be determined by turning the equipment off and on, the user is encouraged to

try to correct the interference by one or more of the following measures:

- Reorient or relocate the receiving antenna.
- Increase the separation between the equipment and receiver.
- Connect the equipment into an outlet on a circuit different from that to which the receiver is connected.
- Consult the dealer or an experienced radio/TV technician for help.

To maintain compliance with FCC's RF Exposure guidelines, The 20cm is the minimum

distance that has to be maintained between your body and the device.

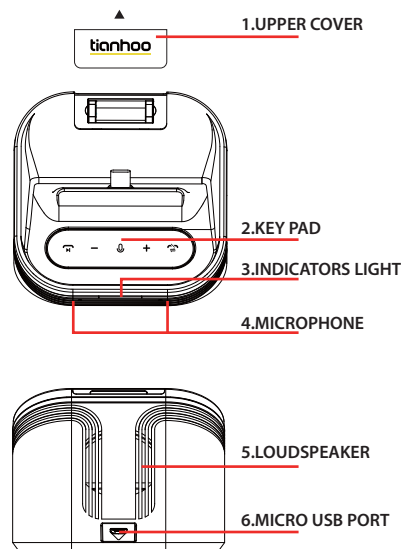
FCC ID :2AXAX-ESOPLAY

BOX CONTENTS

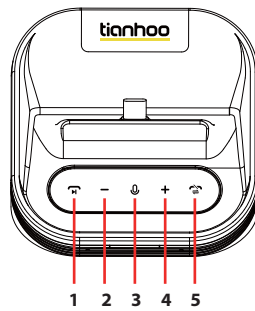
- 1. EOS play CONFERENCE SPEAKER**
- 2. POWER ADAPTER**
- 3. MICRO USB CABLE**
- 4. USER MANUAL AND WARRANTY CARD**



GENERAL DESCRIPTION



KEYPAD OVERVIEW



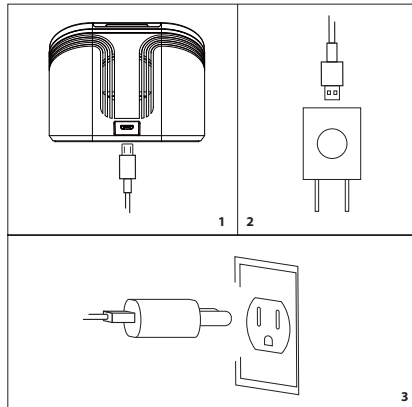
1. **Short Press** : Play / Aanswer.
2. **Short Press** : Volume Down.
Hold Down 3 Seconts : Previous Song.
3. **Short Press** : Microphone off.
4. **Short Press** : Volume Up.
Hold Down 3 Seconts : Next Song.
5. **Short Press** : Hang Up.
Double Press : Reject the call.
Hold Down 3 Seconts : Disconnect and re-pair

PLUGGING IN THE EOS play

IMPORTANT:

Before proceeding to point 1 below, check the included power cord and plug and your EOSplay Bluetooth speaker are compatible with your mains electricity supply and associated wall socket.

1. Insert the micro usb cable into the micro usb port on the back of the speaker.
2. Insert the micro usb cable into the usb port on the POWER ADAPTER
3. Connect the POWER ADAPTER to the wall socket.



07.

INDICATORS LIGHT

BLUE LIGHT ON : Bluetooth connection ; Microphone on.

BLUE - GREEN FLASHING : Bluetooth is connecting.

GREEN LIGHT FLASHING : Incoming call.

GREEN LIGHT ON : Calling.

RED LIGHT ON : Microphone off.

RED LIGHT FLASHING : Pairing.

CONNECTING VIA BLUETOOTH (PAIRING)

Follow these steps to pair the EOSplay wirelessly to your bluetooth device.

1. Ensure that the EOSplay is powered on.
2. The RED indicator starts to flash.
3. Enable bluetooth functionality on your device. (smartphone, tablet, computer).
4. On your device, select the EOS play from the bluetooth list and accept pairing.
5. The bluetooth indicator on the speaker turns to a steady blue and the units are now connected.

BLUETOOTH AUTO CONNECTION

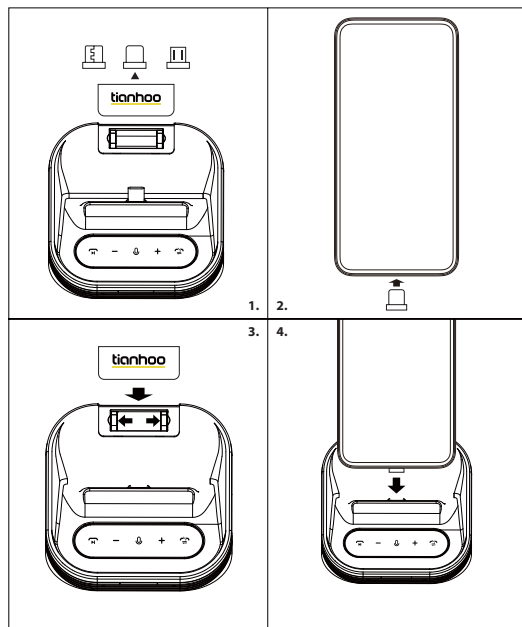
If a bluetooth connected device is moved outside the range of the stanmore bluetooth (approximately 10 metres without obstacles), it is disconnected. The device is automatically connected again when it is moved back within range.

Every time the speaker starts up, it will tries to connect to the last connected bluetooth device.

CHARGE YOUR SMARTPHONE.

Note: Only the original 5V≈2A power adapter can be used. Do not use non-original power adapters.

1. Open the upper cover and take out the magnetic plug. Choose the magnetic plug that matches your smartphone.
2. Insert the magnetic plug into the port of your smartphone.
3. Put the remaining magnetic plug back into the slot and close the top cover.
4. Put your smartphone into the magnetic port.



COMPATIBILITY

1. Only compatible with smartphones with I/O ports in the bottom middle.
2. Only compatible with mobile phones whose width does not exceed 78.1mm (3.07inch).
3. Compatible device :
 - Samsung Galaxy S series.
 - Samsung Galaxy Note series.
 - Google Pixel series.
 - ...
 - And all I/O ports are in the middle of the bottom, and the width does not exceed 87.1mm(3.07inch) for mobile phones.
4. Suitable for most common thickness Case.

TECHNICAL INFORMATION

SOUND SPECIFICATION

- DIGITAL CLASS D AMPLIFIER: 1X3.9W
- MAX POWER OUTPUT: 5W RMS
- 1.6" LOUDSPEAKER: 1X
- 5W Output
- FREQUENCY RESPONSE: 45 - 16 000Hz +-3db

CONNECTIVITY:

- BLUETOOTH: STANDARD V5.0 + SBC CODEC

TECHNICAL INFORMATION

- MAINS INPUT VOLTAGE: 100-240V~ /200W • NOMINAL RATING: 100-240V~
- ABSOLUTE MIN/MAX: 100-240V~
- MAINS FREQUENCY: 50-60Hz
- POWER ADAPTER OUTPUT VOLTAGE: 5V 2000mA
- MAX PEAK POWER CONSUMPTION: 66W
- WEIGHT: 202g
- SIZE: 120 X 90 X 68mm

TROUBLE SHOOTING

PROBLEM	CAUSE	ACTION
BLUETOOTH DOES NOT TURN ON.	The speaker is not connected to AC mains.	Ensure that the EOS play is plugged into a working AC wall socket
THERE IS NO SOUND	Sound source not connected via Bluetooth.	Connect the sound source to the speaker. see 08 or 09.
	Volume is set too low on either the sound source.	Slightly increase the volume on your sound source.
THE SOUND IS DISTORTED	Volume is set too high on the sound source.	Turn down the playback volume on the sound source.
	The sound file (mp3) is of poor quality.	Try another sound file (mp3) or music player.

TROUBLE SHOOTING

PROBLEM	CAUSE	ACTION
CANNOT CONNECT OR PAIR WITH A BLUETOOTH DEVICE	The two Bluetooth devices are too far apart.	Move the devices closer so that they are within 10 metres, and unobstructed by obstacles such as walls or doors.
	Bluetooth is not enabled on your device.	Ensure that Bluetooth is enabled on your device.
	The Bluetooth auto Connection timed out.	the EOS play auto searches for devices for 3 minutes. If it times out, you need to manually connect to the device.

TROUBLE SHOOTING

PROBLEM	CAUSE	ACTION
BLUETOOTH CONNECTION DROPS OUT	The two Bluetooth devices are too far apart or the connection is affected due to obstacles.	Move the devices closer so that they are within 10 metres, and unobstructed by obstacles such as walls or doors.
	There is a strong electric field surrounding the EOS play	Items such as microwave ovens, wireless network adapters, fluorescent lights and gas cookers use the same frequency range as the Bluetooth device. This may lead to electrical disturbances.
ERRATIC PERFORMANCE	Interference from another electronic device.	Move the EOS play to another spot.
		Turn off or move the interfering electronic device.