

# **TURNTABLE PLAYER**

**ECS01**



## **READ INSTRUCTIONS CAREFULLY BEFORE USE AND STORE IN A SAFE PLACE FOR FUTURE REFERENCE**

### **FCC WARNING**

This device complies with part 15 of the FCC Rules. Operation is subject to the following two conditions: (1) this device may not cause harmful interference, and (2) this device must accept any interference received, including interference that may cause undesired operation.

Any changes or modifications not expressly approved by the party responsible for compliance could void the user's authority to operate the equipment.

NOTE: This equipment has been tested and found to comply with the limits for a Class B digital device, pursuant to Part 15 of the FCC Rules. These limits are designed to provide reasonable protection against harmful interference in a residential installation. This equipment generates, uses and can radiate radio frequency energy and, if not installed and used in accordance with the instructions, may cause harmful interference to radio communications. However, there is no guarantee that interference will not occur in a particular installation.

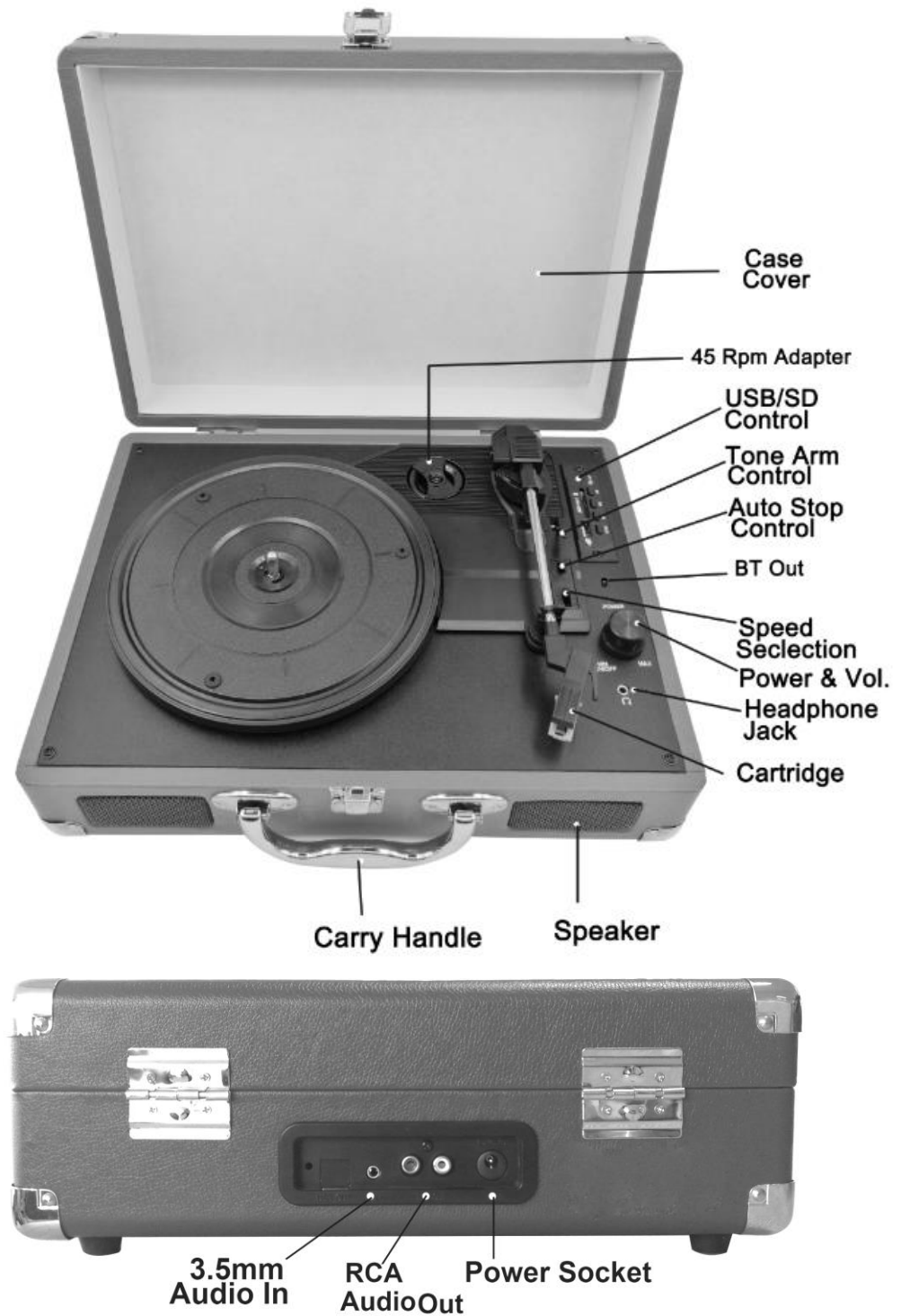
If this equipment does cause harmful interference to radio or television reception, which can be determined by turning the equipment off and on, the user is encouraged to try to correct the interference by one or more of the following measures:

- Reorient or relocate the receiving antenna.
- Increase the separation between the equipment and receiver.
- Connect the equipment into an outlet on a circuit different from that to which the receiver is connected.
- Consult the dealer or an experienced radio/TV technician for help.

To maintain compliance with FCC's RF Exposure guidelines, This equipment should be installed and operated with minimum distance between 20cm the radiator your body: Use only the supplied antenna.

# **DESCRIPTION**

## **CONTROL ELEMENTS**



## **Turntable Operation**

1. Ensure that the mains voltage of your home corresponds to the operating voltage of the adapter. Connect the power adapter to the wall outlet. Connect the DC connector to the "DC IN" jack on the rear of the unit.
2. Place the vinyl record on the big platter gently.
3. Set the correct speed of your vinyl record (33/45/RPM).  
For 45 RPM vinyl record, please use the 45RPM adaptor.
4. Turn on the power of the turntable.
5. Move the tonearm to the requested starting point on the record. The turntable will be running and play is starting now.
6. Adjust speaker volume to the preferred level.
7. Slide the Auto Stop Control switch to choose the out stop.
8. When it going to the end, the TONEARM will stop automatically. You must return the TONEARM to the Tonearm Rest manually.

## **Playing via Bluetooth**

1. Turn on the record player, this automatically turns the Bluetooth on.
2. Make sure you Bluetooth enabled device (Tablet, Phone, Computer) has the Bluetooth switch ON. Go to your Bluetooth setting and check for Bluetooth pairing name "TT-4" and click connect.
3. You should be connected to the record player now and be able to play your music.

## **Headphone Jack**

Plug headphone into the headphone jack to listen to the music. Headphone is not included with the unit.

Note: When using headphone, the sound from the speaker will be cut off

## **RCA Audio Out**

You can listen to your new turntable using the built-in speakers, or you may wish to connect it to your existing Hi-Fi system. Connect the "line out" RCA ports to the "line input" on your mixer or amplifier using an RCA cable (not supplied)

- Red plug into the right channel input
- White plug into left channel input

## **Play 45rpm Vinyl**

Place the 45 rpm ADAPTOER over the spindle. Gently place your 45rpm record onto the turntable. Follow the steps under Turntable operation to play your record.

## **USB/SD Control**



## Play music with USB/SD and Bluetooth

This function part allows user play music from inserted USB flash drive or SD card or Bluetooth or Aux in function. Insert USB flash drive or SD card in appropriate slot or connect your Bluetooth device.

⏮ play previous music

⏭ play next music

⏸ on play mode: short press to start or pause the playing

## Bluetooth control

When the tone arm set to the rest position, Bluetooth function will start automatically. Then need to press the mode key to circle between USB/SD and BT.

## USB/SD encoding system

Insert USB/SD when playing old vinyl, just long press (about 3 seconds) **MODE** then it starts to record with GREEN flash light till press the ⏸ key to stop it.

**MODE**: Short press to select among USB/SD and recording FILE stored in USB/SD.

⏸: Long press it to delete the current music recorded from outer sound source. On record mode, press it to stop recording.

## Auto Stop

- When a record finishes playing, it can be controlled by the auto-stop ON/OFF switch.
- Lift up the tone arm and put it on the rest when finished.
- Replace the protective cap on the stylus and close the tone arm lock.
- Turn off the power at the mains

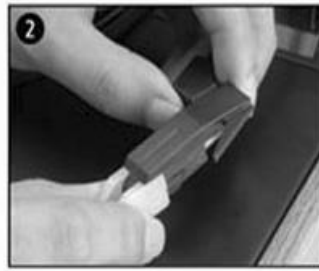
# CARE AND MAINTENANCE

## Replacing The Stylus Cartridge

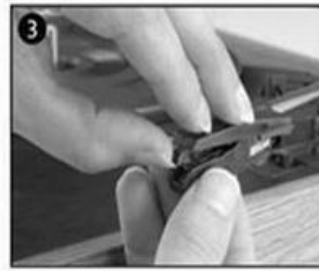
Refer to figures 1-8



1 push the arm lock to release the tone-arm.



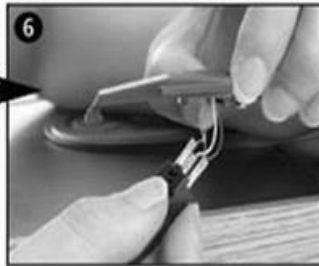
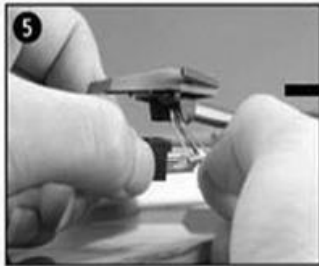
2 take off cap of the cartridge to expose the needle out.



3 separate the cartridge from the socket lightly.



4 take off the audio-line from the cartridges completely.



**To fit a new cartridge, repeat process 3 & 4 in reverse order.**

Note: Please exercise extreme care whilst performing this operation so as to avoid damaging the tone arm and audio line wires. The Turntable's cartridge needs to be replaced every 3 - 4 months (approximately every 250 hours of total playback time) after continuous playing. Replacement Ceramic type Cartridges are widely available to purchase from the internet.

## Cleaning

We advise you to clean your records with an anti-static cloth in order to enjoy optimum playback quality and to help make them last.

For the same reason, your stylus should be replaced periodically (approximately every 250 hours of total playback time).

Dust the stylus from time to time using a very soft brush dipped in alcohol (brushing from back to front of the cartridge).

## FAQs

| Problem                                       | Solution   |
|---|--|
| The unit will not power ON.                   | Make sure the unit's power cord is connected to an appropriate electrical outlet and the wall socket is switched ON.                                   |
| There is no sound.                            | Rotate the POWER/VOLUME knob clockwise to increase the volume.   |
| The vinyl record will not play.               | Make sure you have selected the correct speed (33 1/3, 45 or 78 RPM).<br>Make sure the power adapter is correctly plugged in.                          |
| Nothing will play via the AUX OUT connection. | Make sure the cable is firmly connected and check that your external device is clean and undamaged.  |
| There is no sound via the Stereo RCA port.    | Make sure the cable is firmly connected to the turntable and to your amplifier or other device.<br>Check the volume on your amplifier or other device. |