

ScopeAround  
USER MANUAL



Model No.: SA39E

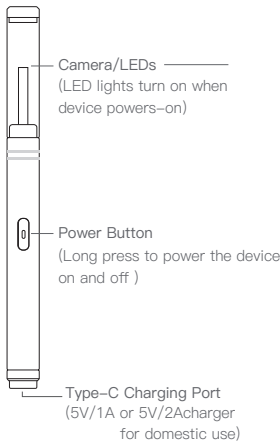
**Warning**

- You must read the instruction manual carefully before using.
- You must put the protective cover onto the otoscope before using, then sanitize all the areas that contact the skin.
- Keep out of reach of children. Children are not allowed to use this product.
- Please take great care when using ear picks to clean earwax. DO NOT insert them too far into the ear canal.
- Stop using the otoscope if it overheats.
- When using this product be aware of people around you. Be careful that nobody bumps into your hand while holding the device in your ear.
- Stop using this product immediately if you experience any discomfort.
- This product can not replace a doctor or medical provider's diagnosis or treatment. Contact your doctor immediately if you experience any discomfort.

**1 Product Description**

Accessories:

Charging cable x 1    Ear spoon set x 2  
Instruction booklet x 1    Alcohol wipe x 2



**2 Operation procedure**

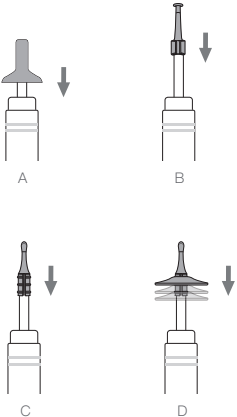
**Step 1 :**

Search for "Smart Endoscope" on APP Store or Google Play Store, download and install the app. Or Scan QR code Download APP.



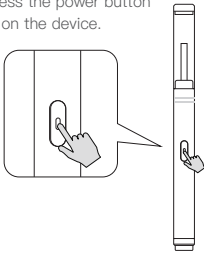
**Step 2 :**

Select the speculum or ear-pick to install as needed.



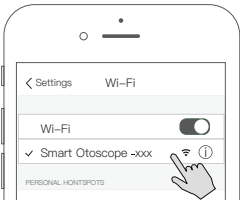
**Step 3:**

Long press the power button to turn on the device.



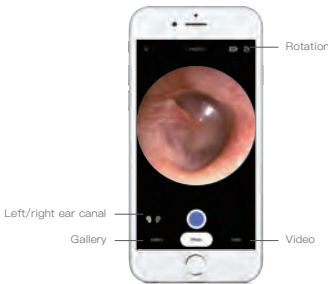
**Step 4:**

Enter the wifi setting menu of the phone to find and connect with the wifi named Smart Otoscope.



**Step 5:**

Open the app once the wifi is connected. Observe the condition within the ear through the otoscope and APP in a real-time manner.



**3 Notices**

- Clean the surface of the device with 75% alcohol solution before contacting with the skin. Disinfect the adapters
- If the image is frozen, please REBOOT and RESTART the App.
- If you cannot turn on the scope, or it turns off after a few minutes of working, it can be the sign of low battery. Please make sure the battery is fully charged.

- In order to keep the image quality clear enough and maintain the optimal result & personal hygiene, please follow up these steps:
  - Please use the provided cleaning cloth to sanitize the tip of the camera before and after EACH use. This can prevent ear wax to stick on the tip of the camera and cause blurry images.
  - Please keep a focal length of about 1 inch to achieve the best quality image (placing the scope too far from your focal point may result in blurry images).
  - The ear canal is not perfectly straight, gently adjust the position of the otoscope to view your ear drum clearly.

**4 Power Safety**

- Check the voltage rating before you connect this equipment to an electrical outlet.
- Use only branded AC adapter approved for use with this device.
- Place the AC adapter and the this equipment in a ventilated area, such as desk top or on the floor, when you use it to charge the battery.
- The AC adapter and this equipment may become hot during charge operation.

**5 Technical Data**

Description	Data
Network Standard	EE802.11b/g/n
Antenna	Built-in IPEX antenna
Operating Frequency	2.4GHz
Data Rate	802.11/b/g/n
Camera Diameter	3.9mm
Viewing angle	70°
Depth of Field	10mm-30mm
Camera Light Source	6LEDs
Power Input	5V/1A
Battery Type	250mAh lithium battery
Battery Life	1.2hours

**6 General Information**

This operation manual allows you to work safely with the otoscope camera. Please keep this manual for your Information. Liability is void for any damage caused by not following this manual.

To clean this device, use a damp cloth or mild, water based cleaner. Fully charge the battery before you leave this device idle for long time to prevent damage to the battery.

Improper transport can harm the device. Always transport this device in the provided box in order to prevent damage.

Electronic equipment does not belong into domestic waste, but must be disposed in accordance with the applicable statutory provisions.

**FCC Caution:**

Any Changes or modifications not expressly approved by the party responsible for compliance could void the user's authority to operate the equipment.

**IMPORTANT NOTE:**

Note: This equipment has been tested and found to comply with the limits for a Class B digital device, pursuant to part 15 of the FCC Rules. These limits are designed to provide reasonable protection against harmful interference in a residential installation. This equipment generates, uses and can radiate radio frequency energy and, if not installed and used in accordance with the instructions, may cause harmful interference to radio communications. However, there is no guarantee that interference will not occur in a particular installation. If this equipment does cause harmful interference to radio or television reception, which can be determined by turning the equipment off and on, the user is encouraged to try to correct the interference by one or more of the following measures:  
—Reorient or relocate the receiving antenna.  
—Increase the separation between the equipment and receiver.  
—Connect the equipment into an outlet on a circuit different from that to which the receiver is connected.  
—Consult the dealer or an experienced radio/TV technician for help.



After-sales Service

If there is any question, feel free to contact us, ScopeAround team here will always offer you best supports



Manufacturer Service

support@scopearound.com

