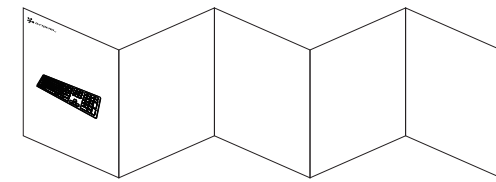


RB730說明書

尺寸: H 125 X W 525 mm



步驟1
如左圖說明
橫向彈簧折

KB-RB730
Multi-device wireless keyboard



瞭解您的鍵盤
Product Overview

A F1 - F12 多媒體快捷鍵 (Win & Android 模式下需加FN鍵例: FN + F1)
F1 - F12 Multimedia keys (Win & Android operating system: FN + F1 ~ F12)

B 鍵盤電源開關
Keyboard power switch

C 指示燈: 左起右為: 數字鍵+大小寫+電源
Indicator: Numlock/Caps Lock/power (left to right)

D 左起右為: 2.4G+藍牙1+藍牙2+睡眠
2.4G wireless/Bluetooth#1/Bluetooth#2/Lock (Sleep) (left to right)

E FN 功能鍵
FN

F 切換為Win系統: FN + W
Switch to WIN operating system: FN + W

G 切換為iOS系統: FN + M
Switch to MAC operating system: FN + M

H 電池盒
Battery slot

J 腳架
feet

K 防滑腳墊
anti-slip rubber

- 產品規格**
- 產品名稱: RB730 無線藍牙鍵盤
 - 藍牙規格: 最新Bluetooth 5.1介面技術
 - 無線介面: 2.4GHz無線功能
 - 按鍵數目: 110 Key
 - 約略尺寸: (L)144x (W)126 x(H)20mm
 - 約略重量: 730 ± 10 g
 - 電源: 2 x AAA乾式電池 (禁用鹼性電池)
- 系統需求規格**
- Windows XP/Vista/Win 7.8.10
 - MAC OS X 10.5 及 Android 3.0 以上操作系統
 - 需有內建Bluetooth接收模組或外接Bluetooth接收器
- 電子特性**
- 輸入電壓: 3V
 - 工作電流: ≤5mA
 - 休眠電流: 30uA
 - 傳輸速率: 1 Mbps
 - 頻率範圍: 2.402GHz ~ 2.480GHz
- 包裝內容**
- RB730 無線藍牙鍵盤
 - 操作說明書&保固卡

設備名稱 / 無線鍵盤 Equipment name	型號 (型式) : RB730 Type designation (Type)					
	限制物質及其化學符號 Restricted substances and its chemical symbols					
單元 Unit	鉛Lead (Pb)	汞Mercury (Hg)	鎘Cadmium (Cd)	六價鉻Hexavalent chromium (Cr ⁶⁺)	多溴聯苯Polybrominated biphenyls (PBB)	多溴二苯醚Polybrominated diphenyl ethers (PBDE)
塑膠材料	○	○	○	○	○	○
電路板組	○	○	○	○	○	○
線材組	○	○	○	○	○	○
金屬材料	○	○	○	○	○	○

備註1: "○"表示0.1 wt% 或 "超出0.1 wt%" 係指所用物質之百分比含量超出百分比含量基準值。
Note 1: "○" indicates that the percentage content of the restricted substance exceeds the reference percentage value of presence criterion.

備註2: "○" 係指所用物質之百分比含量未超出百分比含量基準值。
Note 2: "○" indicates that the percentage content of the restricted substance does not exceed the percentage of reference value of presence.

備註3: "-" 係指該項所用物質為排除項目。
The "-" indicates that the restricted substance corresponds to the exemption.

連線模式 **配對方式**

第一組Bluetooth模式
單擊為切換
長按3秒為配對模式

請按配對裝置開啟Bluetooth介面,並開啟搜尋
同時長按3秒,燈號【1】開始閃爍自動搜尋配對。
藍牙搜尋【B.FRIEND 730】點選連線,無需密碼即可配對。

第二組Bluetooth模式
單擊為切換
長按3秒為配對模式

請按配對裝置開啟Bluetooth介面,並開啟搜尋
同時長按3秒,燈號【1】開始閃爍自動搜尋配對。
藍牙搜尋【B.FRIEND 730】點選連線,無需密碼即可配對。

*如一次未能成功切換,請再單擊一次即可。

系統切換說明

- Bluetooth模式: 連接行動裝置下將自動切換作業系統,以符合使用環境。
- 需手動切換
- 使用2.4G無線連接器模式下需手動切換系統,以符合使用環境。
- 系統預設值為Windows作業系統,IOS使用者需手動切換為IOS系統。

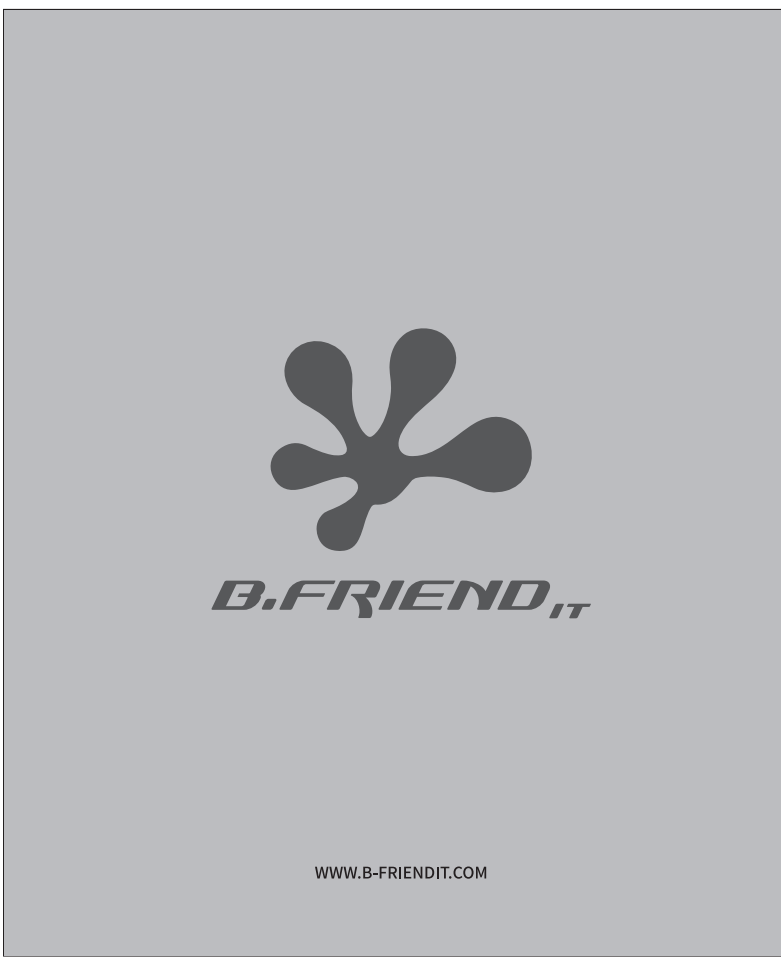
● 切換方式如下:
FN + W 為 Win系統
FN + M 為 iOS系統

● 在2.4G下如何判定連線在WIN還是MAC模式?
請用多媒體鍵判斷:
鍵盤在WIN模式,需按FN+F1-F12 實現多媒體
(若無請按 FN + W 切換回WIN模式)
鍵盤在MAC模式,單按F1-F12 實現多媒體
(若無請按 FN + M 切換回MAC模式)

● 默認為WIN模式
(後續記憶上一次的的使用模式)

多媒體快捷鍵說明

按鍵	Win/Android (FN + F1 ~ F12)	Mac/iOS (F1 ~ F12)
+ F1	亮度 -	亮度 -
+ F2	亮度 +	亮度 +
F3	X	開啟應用程式
F4	X	應用程式居中
F5	搜尋	搜尋
F6	主頁	X
F7	上一曲	上一曲
F8	播放/暫停	播放/暫停
F9	下一曲	下一曲
F10	靜音	靜音
F11	音量調小	音量調小
F12	音量調大	音量調大
信封 FN +	信箱 FN +	X
鎖出	登出	FN + 鎖出: 登出



WWW.B-FRIEND.IT

安全聲明

- 開始使用前請閱讀以下事項並請保留此聲明作為未來之依據。
- 請勿摔落或撞擊您的鍵盤。
- 請勿在強烈震動環境下使用您的鍵盤,因為震動可能損壞您的鍵盤。
- 請勿用任何方式拆解或改變您的鍵盤,自行拆解或改變您的鍵盤將造成您的保固失,或有可能造成短路或導致故障。
- 請勿在潮濕的環境中使用,液體滲入鍵盤中將可能造成產品損壞或有可能導致失火與短路。
- 請勿將金屬物質插入鍵盤主體中。
- 若您使用不當充電電池或已使用過的電池,將可能造成失火或爆炸的危險性。
- 丟棄電池時請依當地的法規規範。

保固說明

1.保固方式
B.FRIEND保證所有產品在保固期內,若出現材料或功能上的瑕疵與故障,B.FRIEND將以維修或更換同等級產品的方式來服務消費者。

2.有限保固
本保固條款之適用範圍,不包括產品因非自然或外在因素所造成的損壞,如有下列狀況發生,則產品皆不適用於B.FRIEND產品保固條款。
(1) 因天災、人為不當操作等非產品本身之因素故障時。
(2) 產品經過非本公司授權之技術人員維修或拆裝時。
(3) 透過非B.FRIEND授權之經銷管道所購買之產品。
(4) 台灣區域銷售產品種裡適用於台灣地區保固與服務如果有特殊需求必須將本公司台灣購買之產品攜帶至國外使用,非本公司正式授權銷售之地區將無法提供任何服務。
(5) 請妥善保留此卡,若經遺失,不得補發。

3.保固條款適用的對象
B.FRIEND保證服務條款,僅適用於透過合法銷售通路購得本公司產品的消費者。

4.保固期限
請至官方網站了解保固期限。

5.送修方式
產品保固期內若需維修,請逕回原購買處或連絡本公司。

Specification

- Model: RB730 wireless bluetooth keyboard
- Connection: Support Bluetooth V5.1 and
- Key number: 110 keys (UK Layout : 111 keys)
- Dimension: 17.3 x 5 x 0.6 in (440 x 126 x 20 mm)
- Net Weight: 1.6 lb(730g)
- Battery type: AAA(not included)

System Requirement

- Windows XP/Vista/Win 7.8.10
- MAC OS X 10.5 & Android 3.0 or later

Package include

- 1 x Wireless keyboards, 1 x Nano Receiver
- (Behind the keyboard), 1 x Keyboard Cover(Free)
- 1 X User manual

Operations

- Input voltage: 3V
- Power Consumption:
- Working mode: ≤5mA
- Standby Mode: 30uA
- Transfer speed: 1 Mbps
- Frequency range: 2.402GHz ~ 2.480GHz

FCC Caution: Any changes or modifications not expressly approved by the party responsible for compliance could void the user's authority to operate this equipment.

This device complies with part 15 of the FCC Rules. Operation is subject to the following two conditions:
(1) this device may not cause harmful interference, and
(2) this device must accept any interference received, including interference that may cause undesired operation.
This device and its antenna(s) must not be co-located or operating in conjunction with any other antenna or transmitter.

NOTE: This equipment has been tested and found to comply with the limits for a Class B digital device, pursuant to Part 15 of the FCC Rules. These limits are designed to provide reasonable protection against harmful interference in a residential installation. This equipment generates, uses and can radiate radio frequency energy and, if not installed and used in accordance with the instructions, may cause harmful interference to radio communications. However, there is no guarantee that interference will not occur in a particular installation.
If this equipment does cause harmful interference to radio or television reception, which can be determined by turning the equipment off and on, the user is encouraged to try to correct the interference by one or more of the following measures:
- Reorient or relocate the receiving antenna.
- Increase the separation between the equipment and receiver.
- Connect the equipment into an outlet on a circuit different from that to which the receiver is connected.
- Consult the dealer or an experienced radio/TV technician for help. The device has been evaluated to meet general RF exposure requirement. The device can be used in portable exposure condition without restriction
FCC ID: 2AKAU-KB-RB730

Connect Mode **How to pair**

Bluetooth mode
Press the button to switch to Bluetooth #1

1. Turn on the keyboard.
2. To assign a bluetooth device, hold button for 3 seconds and until indicator [1]&[4] starts flashing.
3. On the host device, look for [B.FRIEND 730] then connect to pair.

Bluetooth mode
Press the button to switch to Bluetooth #2

1. Turn on the keyboard.
2. To assign a bluetooth device, hold button for 3 seconds and until indicator [4] starts flashing.
3. On the host device, look for [B.FRIEND 730] then connect to pair.

WIN / MAC switch

Bluetooth mode:
It will auto switch to WIN / MAC according to operating system.

2.4G wireless mode:
Press FN+W to WIN operating system
Press FN+M to MAC operating system

*How do I tell Win or Mac in 2.4G wireless mode?
If the keyboard in Win mode, press FN + F1-F12 to get multimedia keys function.
(If not, please press FN + W to switch Win mode)

If the keyboard in Mac mode, press F1-F12 to get multimedia keys function.
(If not, please press FN + M to switch Mac mode)

Default: Win mode
(Last setting will be remembered.)

Multimedia keys

KEY	Win/Android (FN + F1 ~ F12)	Mac/iOS (F1 ~ F12)
+ F1	Decrease the brightness	Decrease the brightness
+ F2	Increase the brightness	Increase the brightness
F3	X	Enter Mission Control
F4	X	View Windows in the Current App
F5	Search	Search
F6	Home	X
F7	Prev. Track	Prev. Track
F8	Prev. Track	Prev. Track
F9	Next Track	Next Track
F10	Mute	Mute
F11	Volume down	Volume down
F12	Volume up	Volume up
信封	Mail	X
鎖出	Lock	FN + 鎖出: Sleep