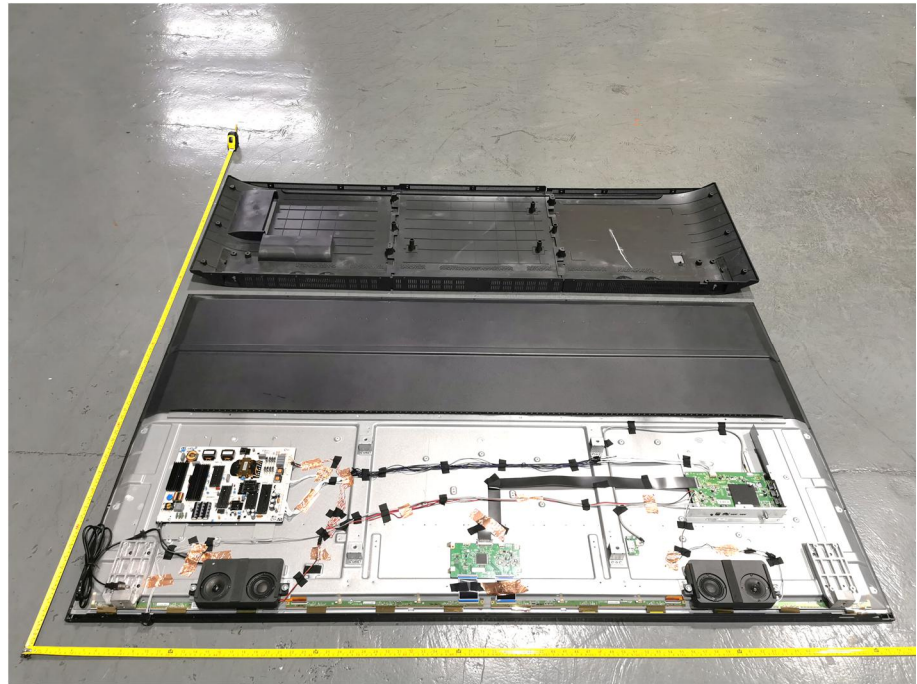
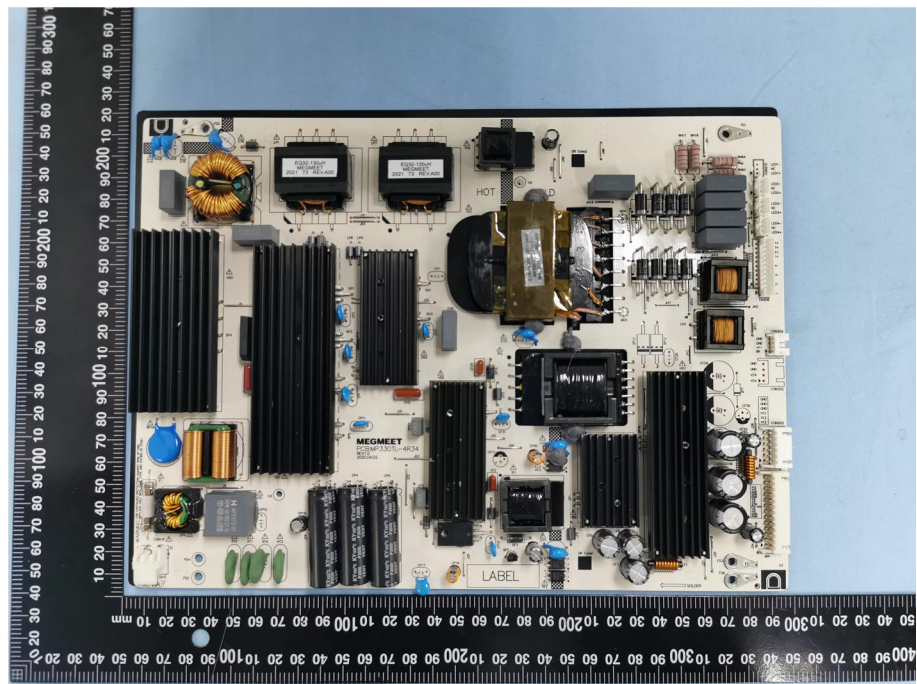


EXHIBIT 3 - EUT INTERNAL PHOTOGRAPHS

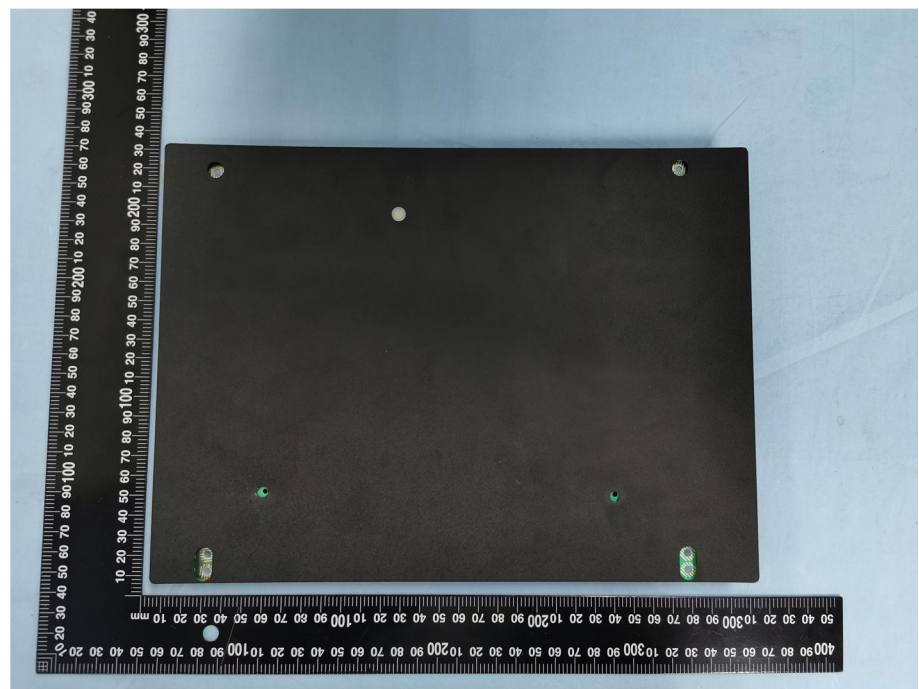
**EUT Housing and Board
View 1**



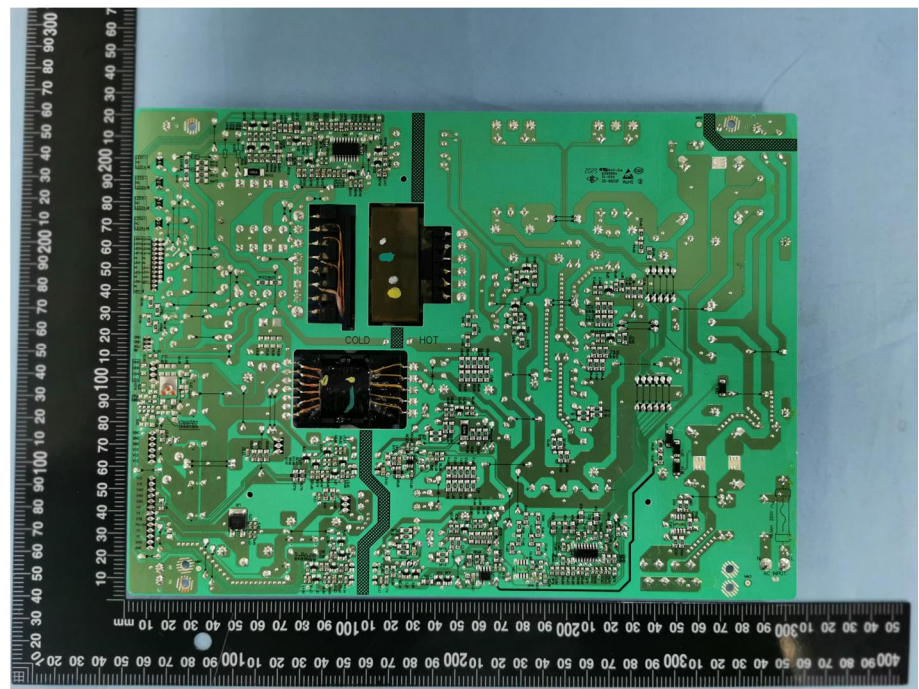
**Solder
Board-Component View
1**

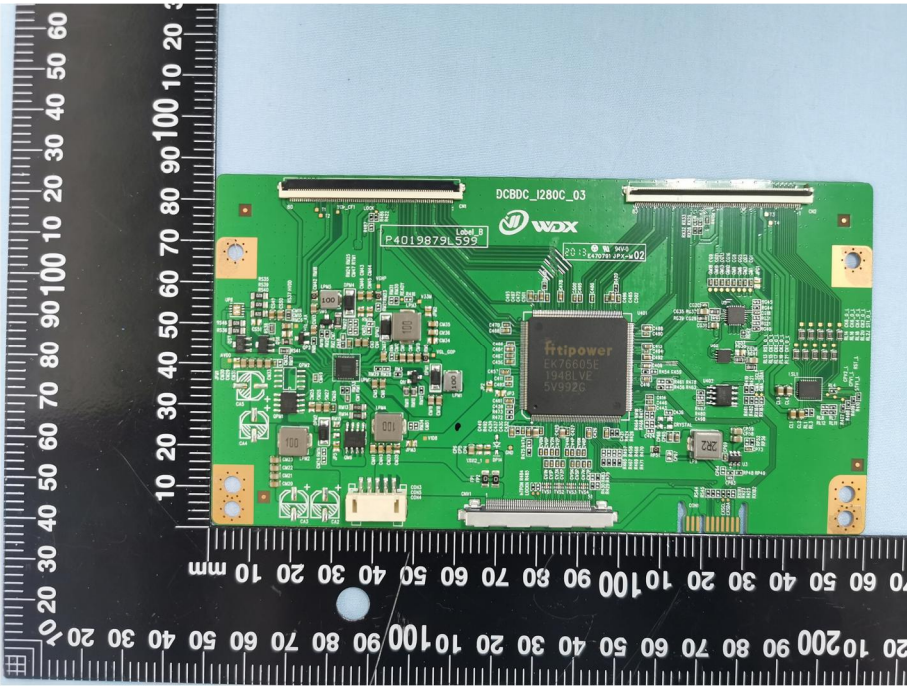
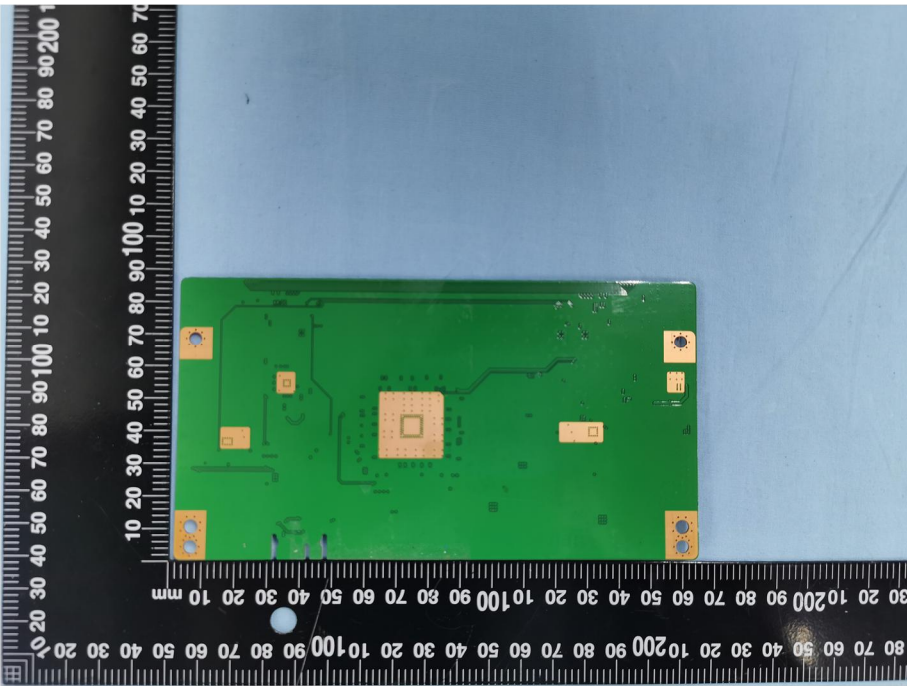


**Solder
Board-Component View
2**

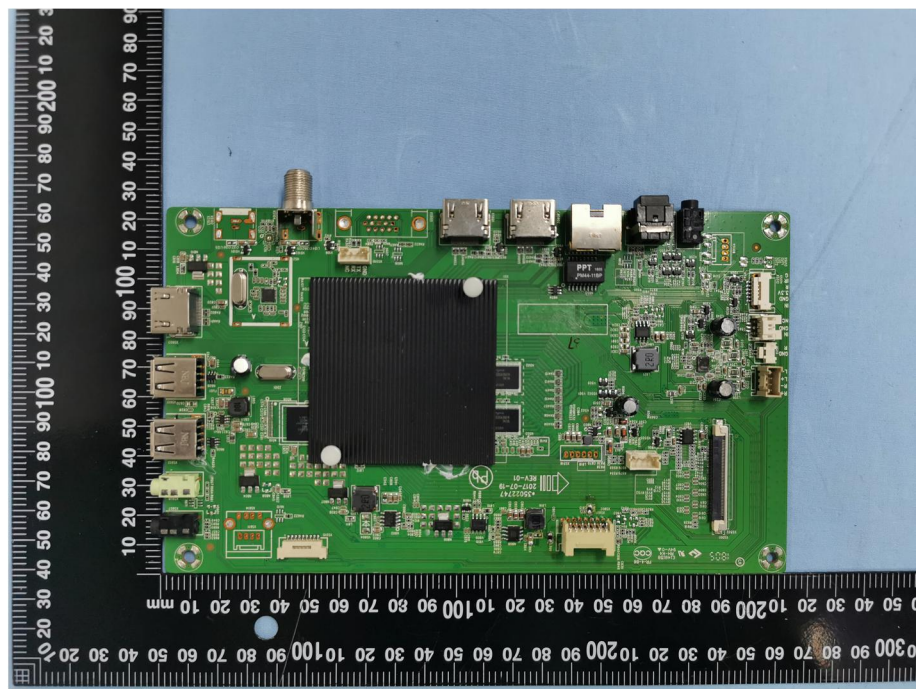


**Solder
Board-Component View
3**

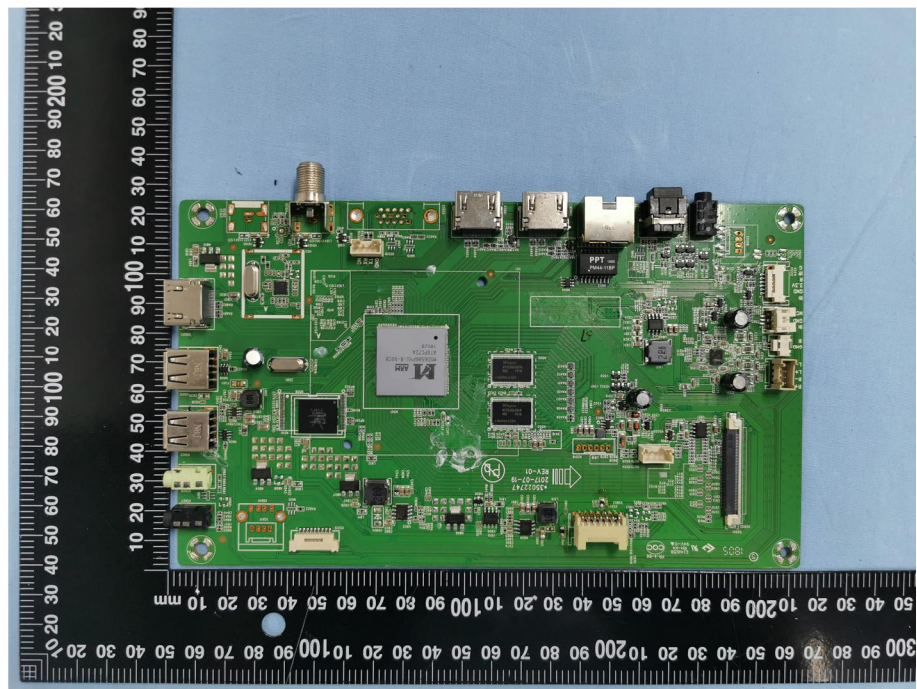


<p style="text-align: center;">Solder Board-Component View 4</p>	 <p>A photograph of a green printed circuit board (PCB) populated with various electronic components. The board is oriented vertically and is placed on a black surface with a white ruler for scale. The ruler shows measurements in millimeters, with markings every 10 mm and sub-markings every 1 mm. The PCB features a central square component labeled 'fitipower EK76805E 1948LVE 0V9220'. Other components include a rectangular component labeled 'P4019879L599', a component labeled 'DC80C_I280C_03', and several smaller integrated circuits and capacitors. The board has four gold-plated mounting holes at the corners. The background is a light blue surface.</p>
<p style="text-align: center;">Solder Board-Component View 5</p>	 <p>A photograph of the same green PCB as in View 4, but from the reverse side. The board is oriented vertically and is placed on a black surface with a white ruler for scale. The ruler shows measurements in millimeters, with markings every 10 mm and sub-markings every 1 mm. The reverse side of the PCB shows the solder pads and traces for the components. The board has four gold-plated mounting holes at the corners. The background is a light blue surface.</p>

**Solder
Board-Component View
6**

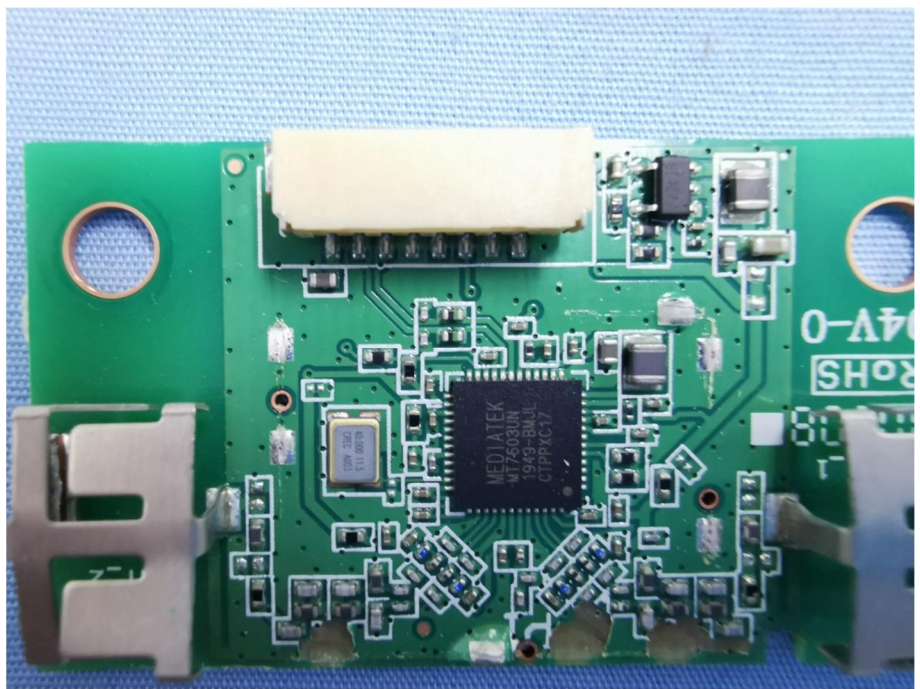
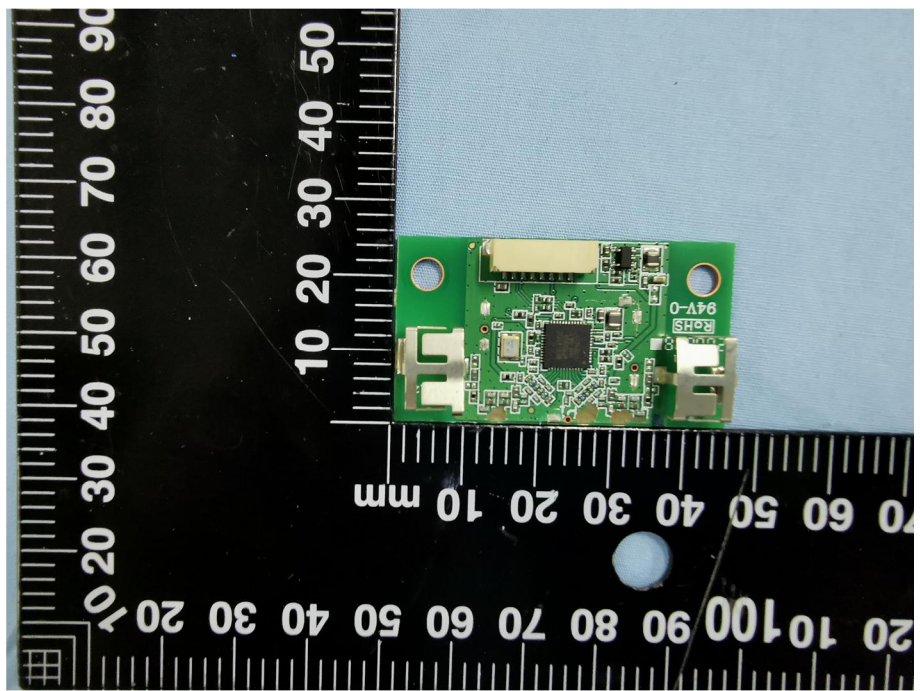


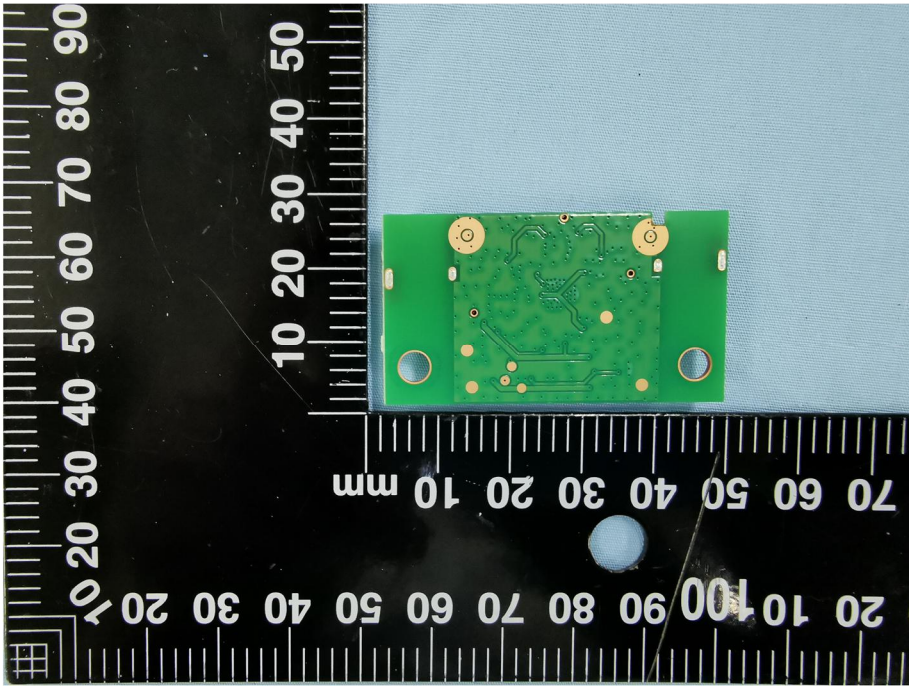
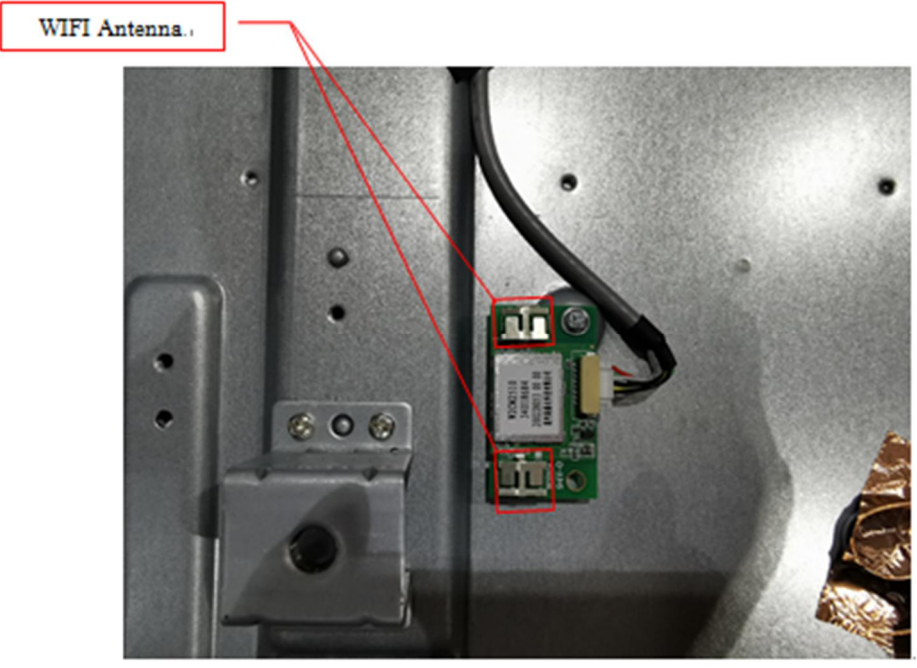
**Solder
Board-Component View
7**



<p style="text-align: center;">Solder Board-Component View 8</p>	
<p style="text-align: center;">Solder Board-Component View 9</p>	

Solder
Board-Component View
10



<p style="text-align: center;">Solder Board-Component View 11</p>	 <p>A photograph of a green printed circuit board (PCB) component, likely a WiFi antenna, mounted on a blue textured surface. The component is rectangular and features several gold-colored circular pads and traces. It is positioned next to a black ruler with white markings in millimeters. The ruler shows measurements from 0 to 100 mm, with the component spanning approximately 40 mm in width and 25 mm in height.</p>
<p style="text-align: center;">Antenna View</p>	 <p>A photograph showing the WiFi antenna component installed inside a metal enclosure. The component is mounted on a metal plate. A red box highlights the component, and a red line points from a label "WiFi Antenna." to it. The enclosure is made of grey metal and has several screws visible. A black cable is connected to the component. A grey plastic component is visible in the foreground.</p>