



# ANGRY ANACONDA

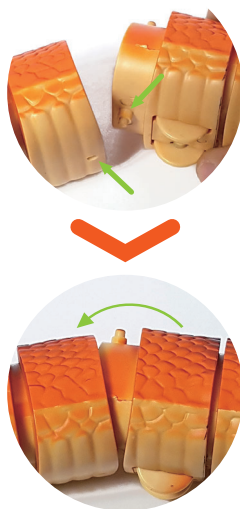
## ASSEMBLING ANGRY ANACONDA

The Angry Anaconda is packaged in two sections.

At the two open ends you will see one end with a hole and one end with a groove.

Simply align the holes and grooves and pop into place.

If you want to separate the two halves for storage, take a pointed object (such as a ballpoint pen) and press the groove in, then gently pull the two halves apart.



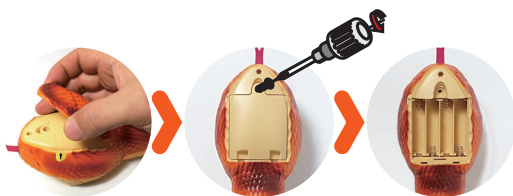
## SETTING UP THE REMOTE CONTROLLER

1. Using a Phillips screwdriver, unscrew the battery cover screw and open.
2. Install 3x AAA batteries, taking care to match the correct polarity +/-.
3. Close the cover and tighten the battery cover screw.

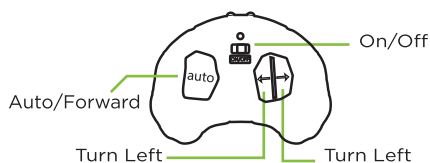
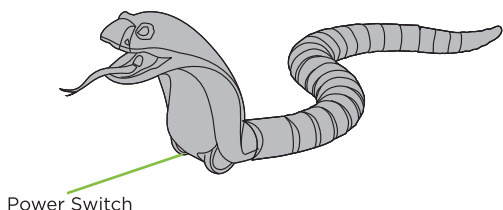


## INSTALLING THE ANGRY ANACONDA'S BATTERIES

1. Using a Phillips screwdriver, unscrew the battery cover screw and open.
2. Install 4x AAA batteries, taking care to match the correct polarity +/-.
3. Close the cover and tighten the battery cover screw.



## CONTROLLING THE ANGRY ANACONDA



1. Set the power switch on the Angry Anaconda to On.
2. Press the Auto/Forward button on the remote control to start moving the Angry Anaconda forward.
3. Press the Left and Right keys on the remote control to change the Angry Anaconda's direction.
4. Press the Auto/Forward button again to stop the Anaconda from moving forward.

## CALIBRATING THE ANACONDA'S REMOTE TRANSMITTER

★Tip. Calibrating the transmitter is only required if the Angry Anaconda does not move in a straight line.

1. Press the Auto/Forward button to move the snake. At the same time press and hold the left and right buttons for 3 seconds to initiate calibration mode. The indicator led will stay on.
2. In calibration mode the Angry Anaconda will keep moving forward. Press the left and right buttons until the snake is moving in a straight line.
3. Once calibrated press and hold the Auto/Forward button for 3 seconds. The indicator LED will turn off.



For Customer Service please email:  
Care@OdysseyToys.com

Please note the units model number and name in your email:  
Model no. ODY-598 • Angry Anaconda

[www.OdysseyToys.com](http://www.OdysseyToys.com)

## CAUTIONS & WARNINGS

- Suitable for ages 8 and up. Adult supervision is always recommended.
- This product contains small parts which are a choking hazard. Keep away from small children.
- Manufacturers and dealers disclaim all responsibility for damage caused by misuse.
- Keep hair and loose clothing away from the Angry Anaconda when powered on.
- If Angry Anaconda will be stored and unused for an extended period of time, please remove the batteries.
- Check the batteries regularly for potential leakage or corrosion that may occur.
- When installing the batteries carefully follow the polarity marking +/-.
- Do not mix different battery types.
- Remove exhausted or drained batteries.
- Do not exceed charging volts and amps of 5v1a.
- Do not leave charger connected or charge for more than 1hr.

## CARE & MAINTENANCE

- Do not submerge the unit in any liquids.
- Keep the unit dry.
- Do not place the unit near powerful, un-shielded magnets.
- Do not expose the unit to extreme hot or cold temperatures.
- Do not hit, drop, or smash the unit with extreme force.
- Do not disassemble the unit for any reason.

NOT FOLLOWING THESE PRECAUTIONS WILL VOID YOUR WARRANTY.

MADE IN CHINA





## 60 DAY LIMITED WARRANTY

Odyssey Marketing/ Odyssey Toys warrants to the original purchaser when used in the United States only, that this product shall be free of defects in material and workmanship. This warranty applies within 60 days of the original purchase date with normal home use. This warranty does not apply for commercial use of this product. Use outside of United States is not covered by this warranty. During the warranty period, we will at our discretion, repair or replace this product without charge, as long as the product has not been abused or mishandled as by our determination. Our determination shall be final and be the consumer's sole remedy. ALL RETURNS must be accompanied by a Return Authorization Number which is issued by Odyssey Marketing's Customer Service Department.

Please contact Customer Service BEFORE returning any products or parts thereof. Once you have obtained a Return Authorization Number you will be provided a return address within the Customer Service email.

This warranty does not cover installation, adjustments in the home, nor damage due to accidents, misuse, abuse, fire, or any acts of God, incorrect line voltage, damage to other equipment caused by improper installation, unauthorized or improper modifications. This warranty gives you specific legal rights and you may also have other rights that vary from state to state.

**\*\* THIS WARRANTY IS EXPRESSLY IN LIEU OF ALL OTHER WARRANTIES. EXPRESSED OR IMPLIED INCLUDING THE WARRANTIES OF MERCHANTABILITY AND FITNESS.\*\*** ©2020 Odyssey Marketing Corp.

FCC STATEMENT: This product complies with Part 15 of the FCC Rules.

Operation is subject to the following two conditions: (1) This device may not cause harmful interference and (2) this device must accept any interference receiver, including interference that may cause undesirable operation.



***Please do not return this product to the store.***

For questions or assistance on installation, parts, or operation contact Odyssey Toys at: **1-(305)-933-4480.**

Email: **Care@OdysseyToys.com**

or visit us online at: **[www.odysseytoys.com/support](http://www.odysseytoys.com/support)**

## **FCC Statement**

This device complies with part 15 of the FCC rules. Operation is subject to the following two conditions: (1) this device may not cause harmful interference, and (2) this device must accept any interference received, including interference that may cause undesired operation.

Changes or modifications not expressly approved by the party responsible for compliance could void the user's authority to operate the equipment.

NOTE: This equipment has been tested and found to comply with the limits for a Class B digital device, pursuant to part 15 of the FCC Rules. These limits are designed to provide reasonable protection against harmful interference in a residential installation. This equipment generates uses and can radiate radio frequency energy and, if not installed and used in accordance with the instructions, may cause harmful interference to radio communications. However, there is no guarantee that interference will not occur in a particular installation. If this equipment does cause harmful interference to radio or television reception, which can be determined by turning the equipment off and on, the user is encouraged to try to correct the interference by one or more of the following measures:

- Reorient or relocate the receiving antenna.
- Increase the separation between the equipment and receiver.
- Connect the equipment into an outlet on a circuit different from that to which the receiver is connected.
- Consult the dealer or an experienced radio/TV technician for help.

The device has been evaluated to meet general RF exposure requirement. The device can be used in portable exposure condition without restriction.