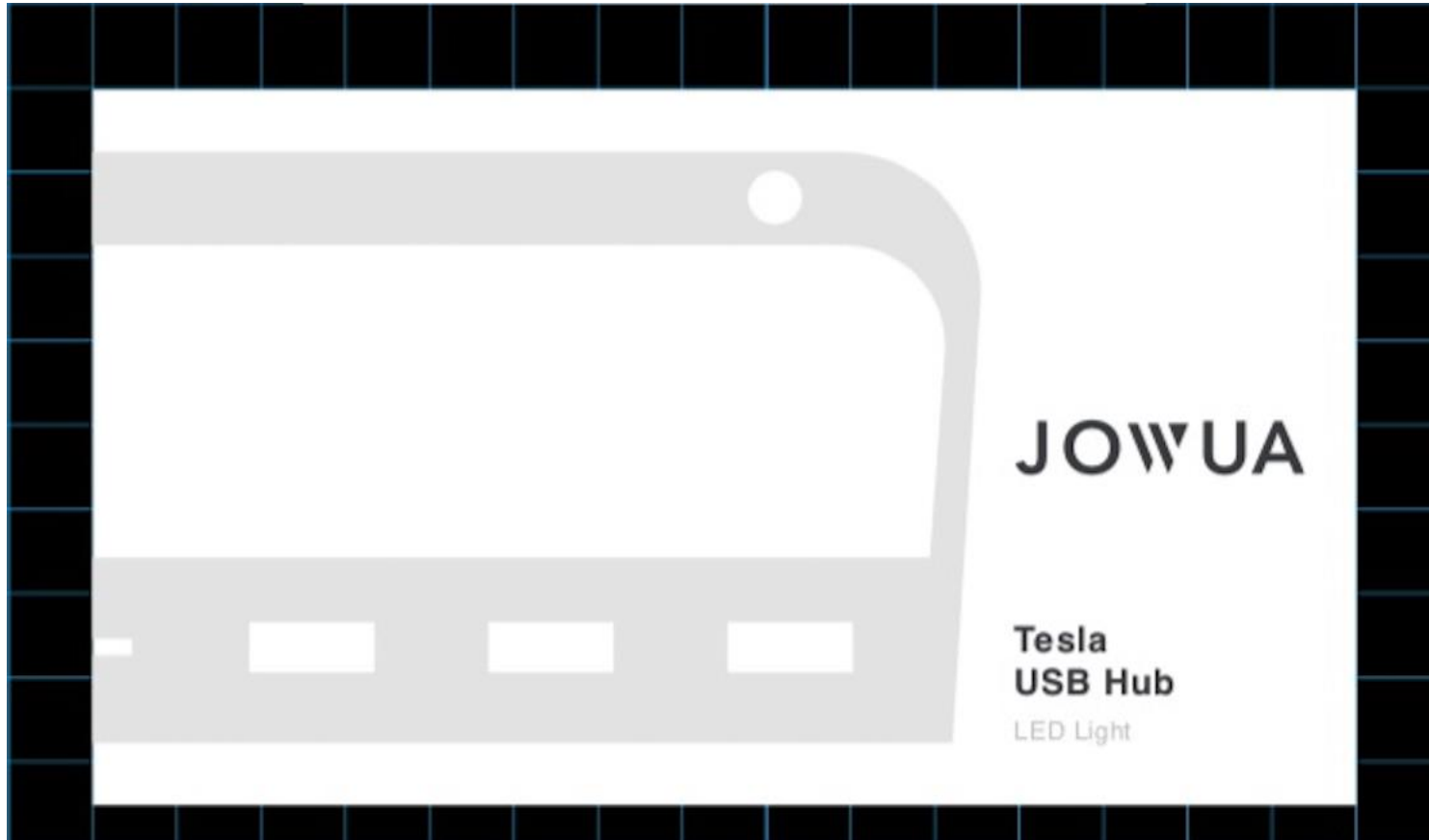


# JOWUA

Installation instructions

# USB HUB WITH LED LIGHT FOR TESLA

---



USB Hub with LED Light

### **Light & Fit**

USB hub with smart LED sensor light design for Tesla Model Y & Model 3 with USB-C and USB-A ports at the front center console, help you find the USB ports and stuff in the dark.

### **USB Hub with more possibilities**

Perfectly compatible with Tesla wireless charger, Type-C connector support up to 18W (Dual USB-A ver.) and 27W (USB-C & USB-A ver.) PD 3.0 power delivery. Other USB ports support DashCam and Sentry Mode storage, music, Boombox, game controller, and other USB device charging.

### **Dynamic Power Control**

Automatic distribution of the available power of your Tesla USB to all connected devices. Ensuring all connected devices charging are dynamically adjusted and optimized.

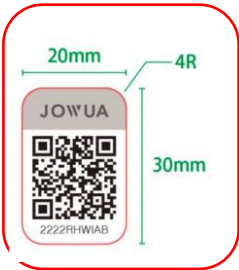


**Jowua**

- [www.jowua-life.com](http://www.jowua-life.com)
- Designed by Jowua
- Made in Taiwan

**4-YEAR / 100,000-MILES Warranty**

- Extend your warranty coverage to 4 years / 100,000 miles from the date of purchase via product registration.
- Make sure to register your product at : [www.jowua-life/pages/warranty-registration](http://www.jowua-life/pages/warranty-registration)



Jowua P/N: FG000300100



**USB-C & USB-A Ver.**

**Model:** JOWUAHB1

**Specification:**

- Dual Rated Input : 5V = 3A; 9V = 3A
- Output:
  - USB-A Ports: 5V = 1.5A (BC v1.2)
  - USB-C Ports: 9V = 3A, 5V = 3A
  - MicroSD: SD3.0, SDHC, SDXC, UHS-I

**FCC ID:** 2AX7X-JOWUAHB1



**Dual USB-A Ver.**

**Model:** JOWUAHB2

**Specification:**

- Dual Rated Input : 5V = 3A; 5V = 3A
- Output:
  - USB-A Ports: 5V = 1.5A (BC v1.2)
  - USB-C Port: 9V = 2A, 5V = 3A
  - MicroSD: SD3.0, SDHC, SDXC, UHS-I

**FCC ID:** 2AX7X-JOWUAHB2

Black  
(Carbon)

Brown  
(Wood)

## ICON- USB HUB WITH LED LIGHT FOR TESLA

- **Smart LED design**

- **PD 3.0 fast charging**



- **Data & entertainment**



Product	Jowua P/N	EAN	Barcode
USB Hub with LED Light for Tesla (USB-C & USB-A / Black Carbon)	FG000300100	4711064600230	 4 711064 600230
USB Hub with LED Light for Tesla (USB-C & USB-A / Brown Wood)	FG000330100	4711064600247	 4 711064 600247
USB Hub with LED Light for Tesla (Dual USB-A / Black Carbon)	FG000300101	4711064600254	 4 711064 600254
USB Hub with LED Light for Tesla (Dual USB-A / Brown Wood)	FG000330101	4711064600261	 4 711064 600261

---

**FCC Statement**

This device complies with Part 15 of the FCC Rules. Operation is subject to the following two conditions: (1) this device may not cause harmful interference, and (2) this device must accept any interference received, including interference that may cause undesired operation.

Changes or modifications not expressly approved by the party responsible for compliance could void the user's authority to operate the equipment.

NOTE: This equipment has been tested and found to comply with the limits for a Class B digital device, pursuant to Part 15 of the FCC Rules. These limits are designed to provide reasonable protection against harmful interference in a residential installation. This equipment generates, uses instructions, may cause harmful interference to radio communications. However, there is no guarantee that interference will not occur in a particular installation. If this equipment does cause harmful interference to radio or television reception, which can be determined by turning the equipment off and on, the user is encouraged to try to correct the interference by one or more of the following measures:

- Reorient or relocate the receiving antenna.
- Increase the separation between the equipment and receiver.
- Connect the equipment into an outlet on a circuit different from that to which the receiver is connected.
- Consult the dealer or an experienced radio/TV technician for help.