

R: Comments # 980138.2KA/fc (#210504A)
→07/05/2021

The user has only to touch with his finger one time for a fraction of second to speak and at the end of conversation to touch again to close the communication.
In normal use the user's head is at least 20 cm away.

Below the product photos with details of the antenna position and distance:



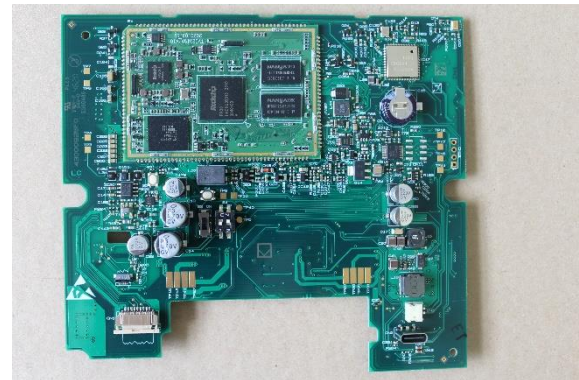
FRONT PANEL WITH PCB



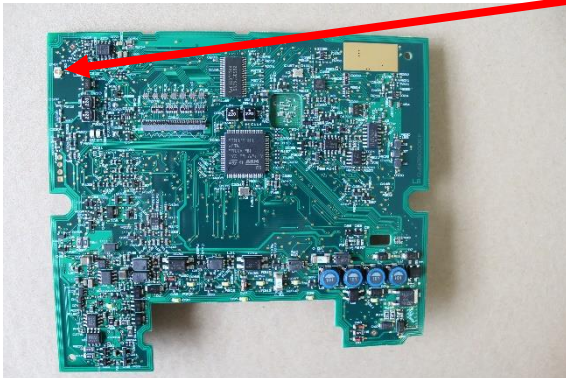
FRONT PANEL WITHOUT PCB



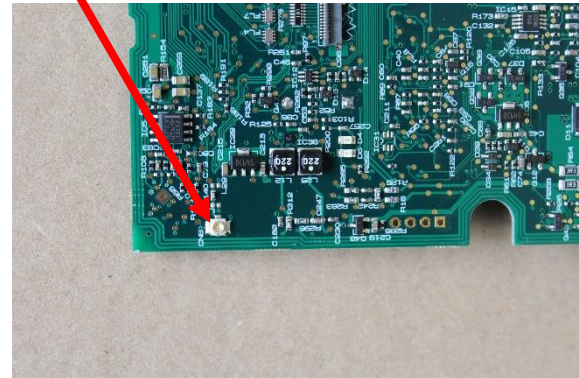
TOP



BOTTOM



ANTENNA CONNECTOR DETAIL



ANTENNA DETAIL