

FCC Cautions

Any changes or modifications not expressly approved by the party responsible for compliance could void the user's authority to operate this equipment. This device complies with Part 15 of the FCC Rules. Operation is subject to the following two conditions:

- (1) This device may not cause harmful interference
- (2) this device must accept any interference received, including interference that may cause undesired operation. This device and its antenna(s) must not be co-located or operating in conjunction with any other antenna or transmitter.

NOTE:

This equipment has been tested and found to comply with the limits for a Class B digital device, pursuant to Part 15 of the FCC Rules. These limits are designed to provide reasonable protection against harmful interference in a residential installation. This equipment generates, uses and can radiate radio frequency energy and, if not installed and used in accordance with the instructions, may cause harmful interference to radio communications.

However, there is no guarantee that interference will not occur in a particular installation. If this equipment does cause harmful interference to radio or television reception, which can be determined by turning the equipment off and on, the user is encouraged to try to correct the interference by one or more of the following measures:

- Reorient or relocate the receiving antenna.
- Increase the separation between the equipment and receiver.
- Connect the equipment into an outlet on a circuit different from that to which the receiver is connected.
- Consult the dealer or an experienced radio/TV technician for help.

The device has been evaluated to meet general RF exposure requirement. The device can be used in portable exposure condition without restriction
FCC ID: 2AX5Y-GX501

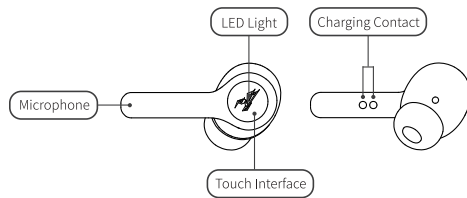
Cautions

1. The headphone is compatible with Android and Apple IOS operating system. If the headphone is used on an unlisted operating system and device, it may not work properly. Please contact after-sale customer service for solutions.
2. Never disassemble or modify your headphone for any reasons to avoid any damage and danger.
3. The headphone does not support connecting two mobile phones at the same time. You will connect the last paired mobile phone by default next time.
4. Please put the headphone back into the charging case to charge in time when you hear the low-power prompt sound.
5. Please charge the headphone fully before using it for the first time or not using it for a long time.
6. Using headphones for a long time may cause hearing damage. Please arrange your using time reasonably.
7. Please use our Type-C charging cable as much as possible in combination with a charger below 5V2A for charging.

Factory Setting

Power the headphone off and press the left/right touch interface for 10 seconds, the left/right headphone will clear the original pairing record and be rematched. After matching, the headphone will enter the normal connecting mode, can be searched and connected by other devices with Bluetooth.

Headphone Controls



1. Power-on

When you open the charging case, the headphone will be powered on automatically. Or press the left/right touch interface for 5 seconds to power it on manually.

2. Power-off

The headphone will be powered off automatically when you put it back into the charging case and close the case. Or press the left/right touch interface for 9 seconds to power it off manually.

3. Play/pause music

Tap the headphone touch interface twice to play/pause music.

4. Previous/next song

Press the left/right touch interface for 3 seconds to switch the previous/next song.

5. Answer/end/reject call

When there is a call, tap the touch interface twice to answer/end the call. Or you can press the touch interface for 3 seconds to reject the call.

6. Switch game/video mode

Tap the right touch interface 3 times to switch game/video mode.

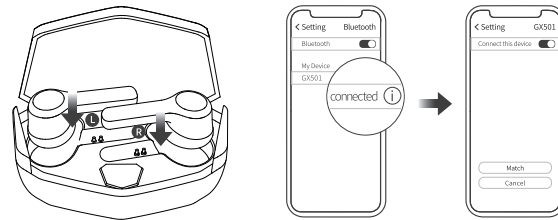
7. Voice assistant

Tap the left touch interface 3 times to activate mobile phone voice assistant.

Quick Start Guide

Put the headphones into the charging case, close and open the case once. Turn on the mobile's Bluetooth, search for GX501 on the mobile phone and click to connect.

Note: the headphones will be powered on automatically when you open the charging case. If not, please charge and try again.



Headphone Charging

1. Put the headphones back into the charging case and close the charging case to charge.
2. If the power of charging case is higher than 20%, the indicator light of charging case will glow solid green when the case is opened and closed.
3. If the power of charging case is less than 20%, the indicator light of charging case will flash red when the case is opened and closed.
4. During the charging process of the case, the lateral indicator light of charging case will glow solid red, and the indicator light will glow solid green when the headphone is fully charged.



GX501 TWS Earphones User Manual