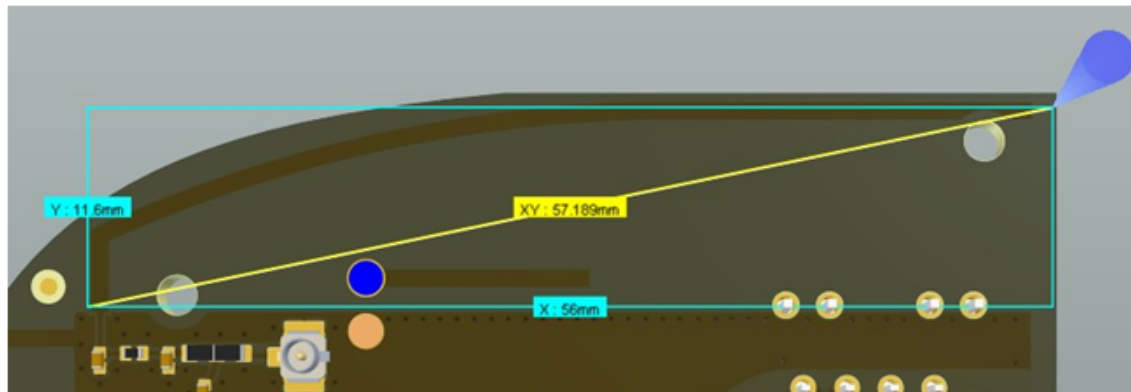


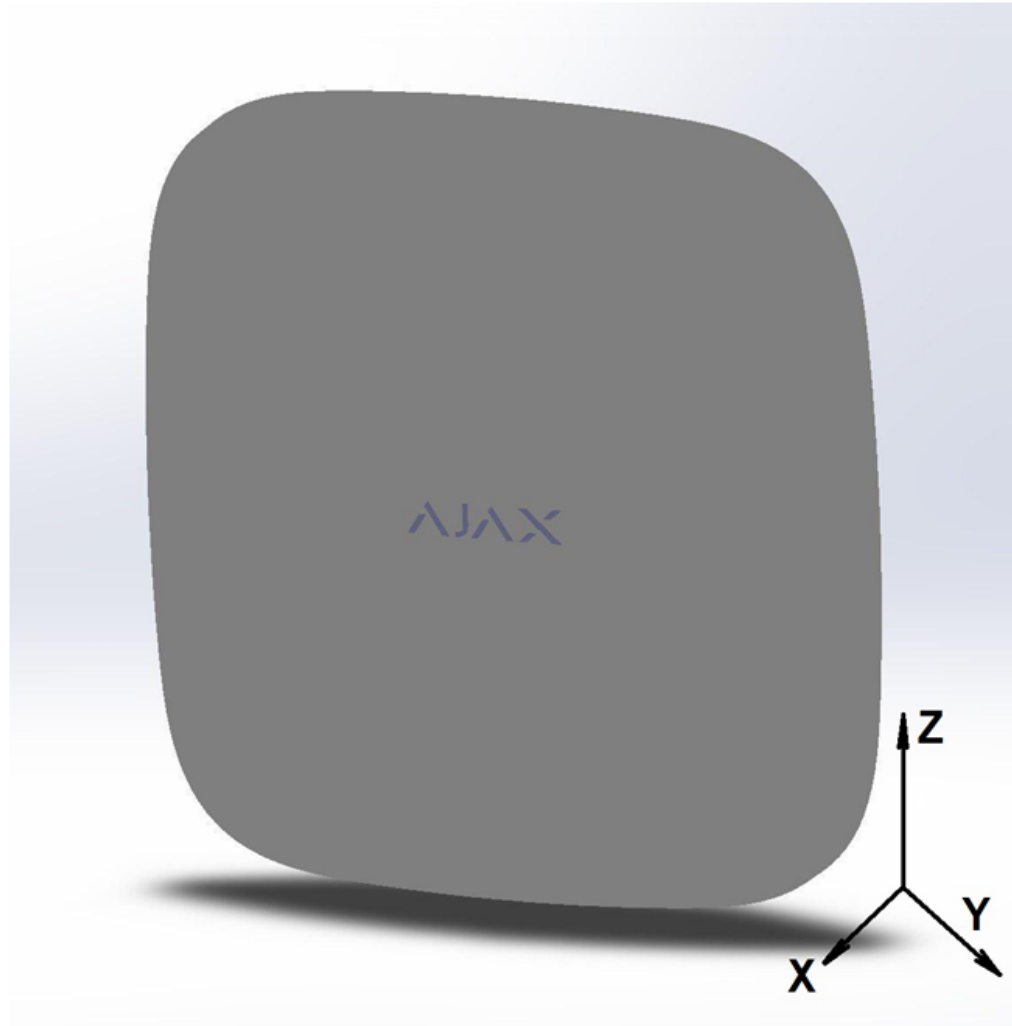
Antenna1 Specification(Jeweller, Inverted-L)

Angle, degrees	Freq='915MHz' Phi='0deg' dBi(GainTotal)	Freq='915MHz' Theta='90deg' dBi(GainTotal)	Freq='915MHz' Theta='90deg' dBi(GainTotal)
	Z-X plane	Z-Y plane	X-Y plane
0	-5.59	-6.31	-7.34
10	-5.28	-5.65	-6.64
20	-5.14	-5.29	-6.17
30	-5.28	-5.19	-5.8
40	-5.73	-5.17	-5.49
50	-6.22	-5.2	-5.23
60	-6.49	-5.34	-5.05
70	-6.67	-5.52	-5
80	-6.87	-5.59	-5.11
90	-6.91	-5.56	-5.27
100	-6.69	-5.48	-5.51
110	-6.41	-5.36	-5.98
120	-6.13	-5.2	-6.68
130	-5.72	-5.07	-7.42
140	-5.25	-5	-8.24
150	-5	-5.05	-9.51
160	-5.02	-5.28	-11.33
170	-5.15	-5.63	-13.65
180	-5.3	-6.02	-17.14
190	-5.71	-6.57	-24.35
200	-6.54	-7.42	-26.57
210	-7.7	-8.44	-18.26
220	-9.08	-9.44	-14.72
230	-10.75	-10.54	-13.06

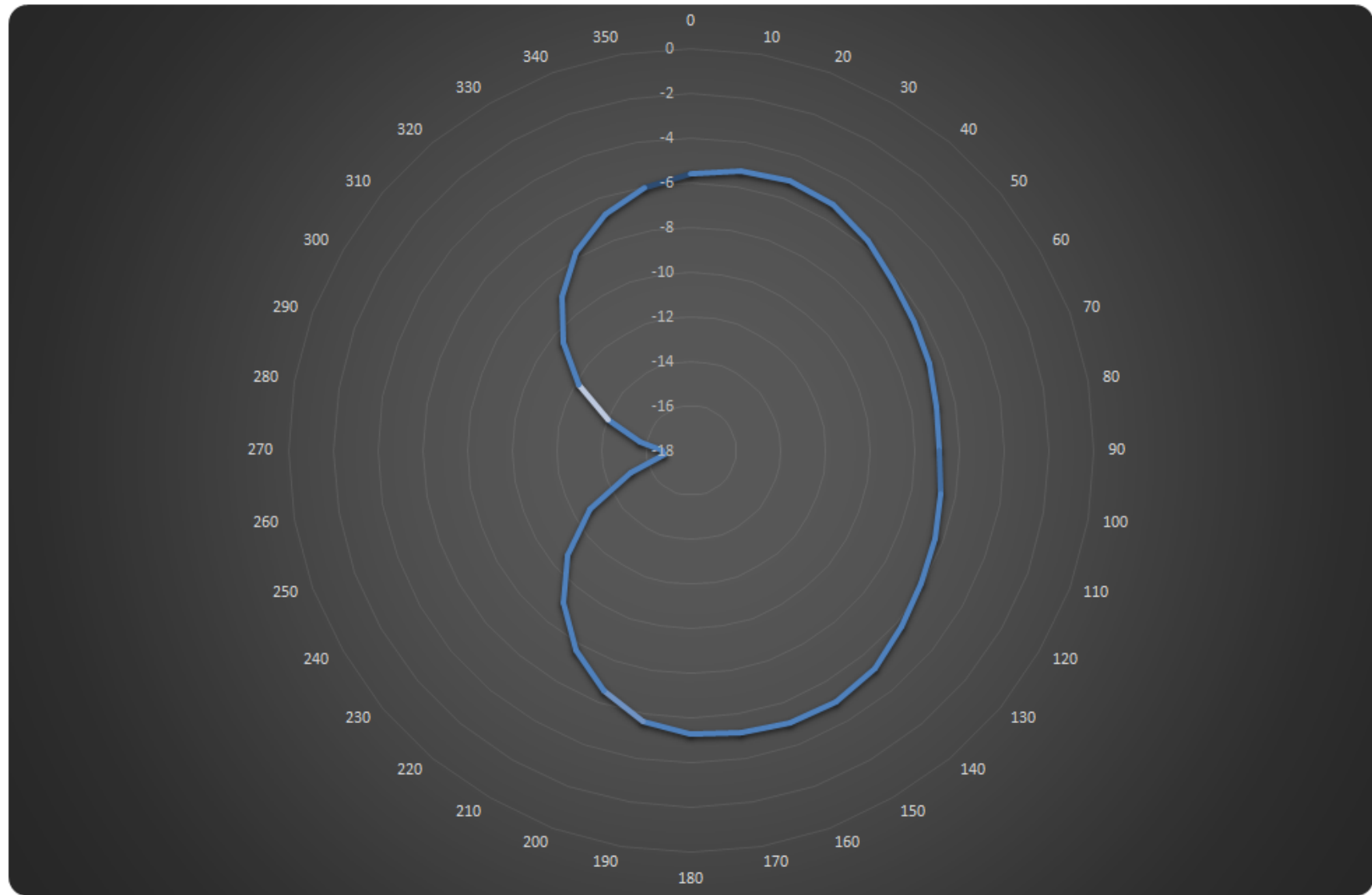
240	-12.78	-12.11	-12.44
250	-15.09	-14.11	-12.76
260	-16.75	-15.8	-13.99
270	-16.71	-16.21	-15.92
280	-15.7	-15.34	-18.75
290	-14.05	-14	-23.71
300	-12.18	-12.59	-24.6
310	-10.5	-11.15	-18.41
320	-9	-9.78	-14.43
330	-7.73	-8.63	-11.77
340	-6.75	-7.77	-9.82
350	-6.05	-7.05	-8.37

Max antenna gain, dBi	
905 MHz	-5.2
915,85 MHz	-5
926,5 MHz	-5.1

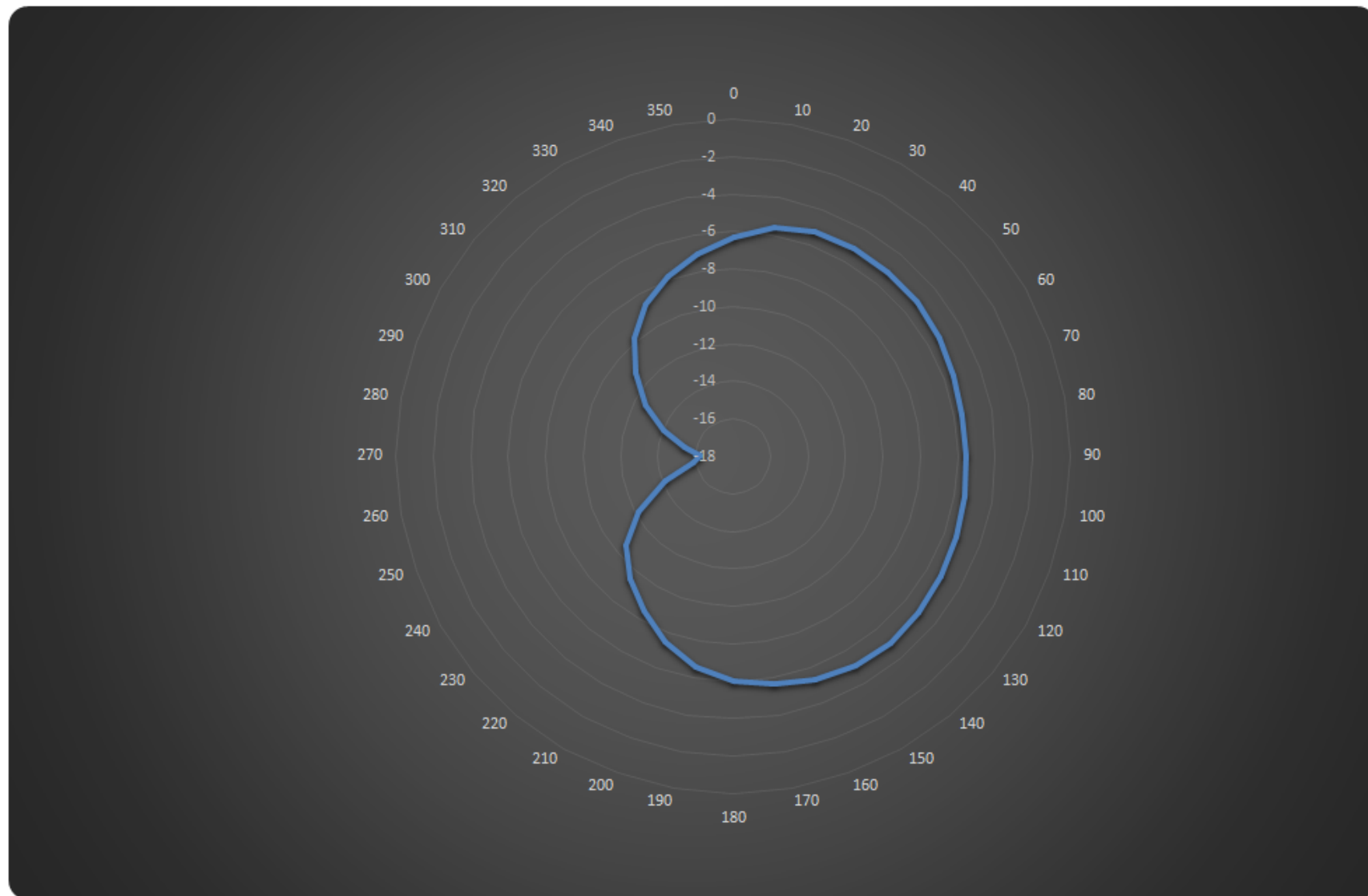




Z-X plane norm



Z-Y plane norm



X-Y plane norm

