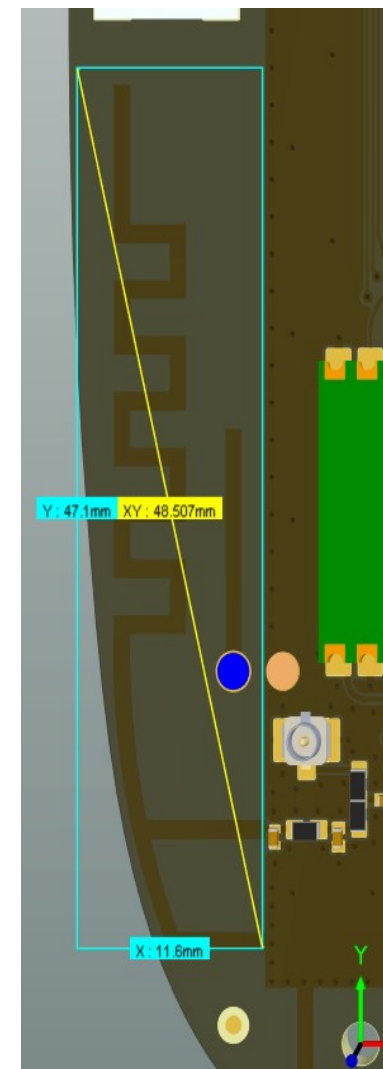


Angle, degrees	Freq='915MHz' Phi='0deg' dBi(GainTotal)	Freq='915MHz' Theta='90deg' dBi(GainTotal)	Freq='915MHz' Theta='90deg' dBi(GainTotal)
	Z-X plane	Z-Y plane	X-Y plane
0	-6.28	-7.34	-10.74
10	-6.24	-7.95	-12.2
20	-6.45	-8.73	-14.27
30	-7.08	-9.73	-17.18
40	-7.9	-10.94	-21.72
50	-8.54	-12.31	-30.27
60	-8.98	-13.62	-29.02
70	-9.38	-14.54	-21.1
80	-9.71	-15.04	-17.3
90	-9.8	-15.46	-15.34
100	-9.67	-15.57	-14.37
110	-9.4	-14.77	-14.24
120	-8.98	-13.44	-15.15
130	-8.41	-12.06	-17.16
140	-7.74	-10.72	-20.2
150	-7.09	-9.45	-23.48
160	-6.55	-8.4	-22.14
170	-6.17	-7.64	-17.76
180	-6	-7.06	-14.16
190	-6.12	-6.58	-11.47
200	-6.58	-6.24	-9.48
210	-7.28	-6.06	-8.02
220	-8.23	-6.04	-7.04
230	-9.43	-6.12	-6.43
240	-10.61	-6.21	-6.11
250	-11.61	-6.24	-6
260	-12.62	-6.27	-6.04
270	-13.22	-6.35	-6.23
280	-12.8	-6.48	-6.57
290	-11.75	-6.51	-7.02
300	-10.53	-6.31	-7.46

Max antenna gain, dBi	
905 MHz	-6.5
915,85 MHz	-6
926,5 MHz	-6.5



310	-9.35	-6.06	-7.91
320	-8.3	-6	-8.41
330	-7.4	-6.14	-8.89
340	-6.78	-6.43	-9.31
350	-6.44	-6.84	-9.83



