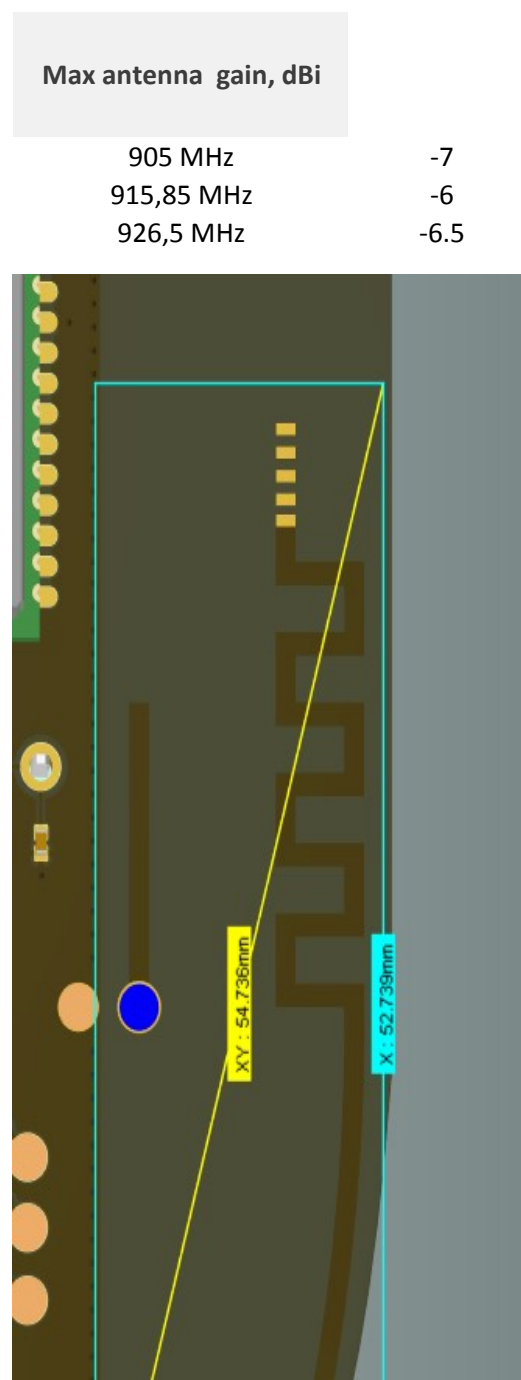


Angle, degrees	Freq='915MHz' Phi='0deg' dBi(GainTotal)	Freq='915MHz' Theta='90deg' dBi(GainTotal)	Freq='915MHz' Theta='90deg' dBi(GainTotal)
	Z-X plane	Z-Y plane	X-Y plane
0	-6.71	-6.41	-8.26
10	-6.61	-6.64	-6
20	-6.37	-6.91	-6.24
30	-6.25	-7.18	-7.01
40	-7	-7.68	-8.25
50	-7.56	-8.66	-9.89
60	-7.9	-9.91	-11.89
70	-8.39	-10.96	-13.29
80	-9.03	-11.67	-12.9
90	-9.19	-12	-11.37
100	-8.65	-11.76	-9.67
110	-8.98	-11.11	-8.32
120	-8.3	-10.18	-7.46
130	-7.6	-9.04	-6.99
140	-7.07	-7.97	-6.71
150	-6.05	-7.13	-6.53
160	-6	-6.52	-6.43
170	-6.17	-6.15	-6.42
180	-6.3	-6	-6.61
190	-6.33	-6.15	-7.05
200	-6.48	-6.61	-7.65
210	-6.78	-7.4	-8.4
220	-6.95	-8.59	-9.29
230	-7.05	-10.16	-10.25
240	-7.37	-11.76	-11.38
250	-7.72	-13.23	-12.69
260	-7.78	-14.56	-13.79
270	-7.54	-15.22	-14.59
280	-7.37	-14.91	-15.57
290	-7.53	-13.57	-16.82
300	-7.74	-11.75	-17.05



310	-7.7	-10.18	-15.08
320	-7.52	-8.95	-13.4
330	-7.35	-7.87	-11.14
340	-7.1	-6.97	-9.84
350	-6.84	-6.46	-9.02

