

Antenna Data Sheet



捷雷科技 OTA 实验室测试报告

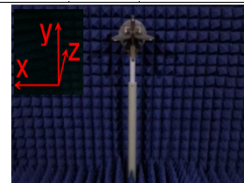
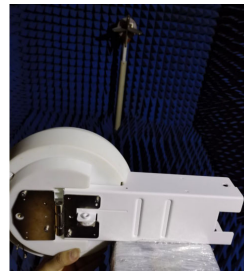
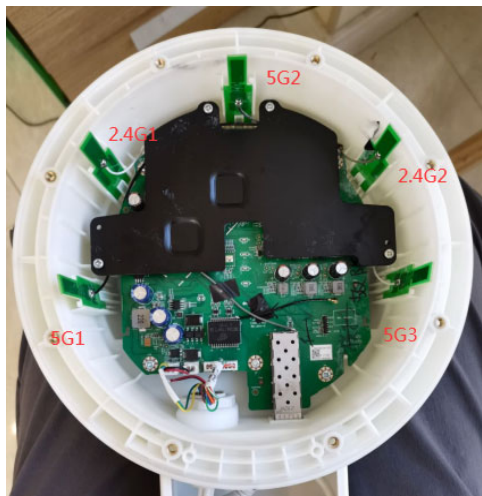
检测结果记录表

样品名称		样机型号		申请单编号	
检测依据	国标	样品数量	1台	样品编号	
检测项目	无源	检测设备	E5071C	检测条件	22.2℃/ 43 %
检测目的	\				

检测结果记录

申请人/送样人	\	软件版本		硬件版本	—
---------	---	------	--	------	---

样机信息
(含S/N号)



H: xoy
E1: xoz
E2: zoy

备注说明

Freq (MHz)	Effi (%)	Gain (dBi)	Freq (MHz)	Effi (%)	Gain (dBi)	Freq (MHz)	Effi (%)	Gain (dBi)
2400	69.99	3.87	2400	72.41	2.6			
2410	70.88	3.71	2410	72.37	2.92			
2420	70.91	3.9	2420	72.39	3.1			
2430	70.72	4.14	2430	71.69	3.2			
2440	68.55	4.33	2440	71.01	3.19			
2450	69.45	3.97	2450	70.2	3.11			
2460	66.94	4.38	2460	68.97	3.06			
2470	66.71	4.23	2470	67.13	2.96			
2480	65.44	3.27	2480	67.77	3.01			
2490	67.07	4.24	2490	67.47	2.96			
2500	64.66	3.43	2500	66.14	2.77			

2.4G1

2.4G2

检测人员/日期

审核/日期



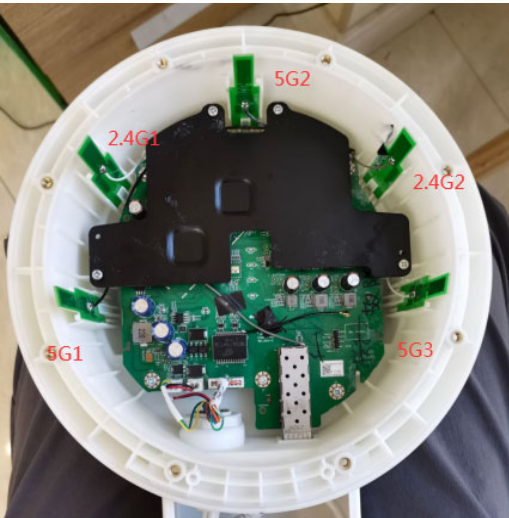
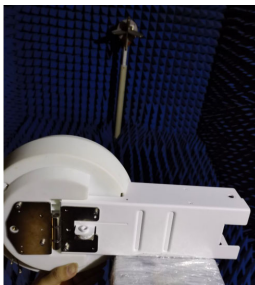
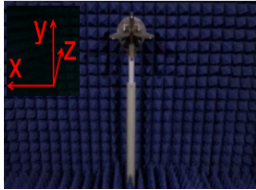
检测结果记录表

样品名称		样机型号		申请单编号	
检测依据	国标	样品数量	1台	样品编号	
检测项目	无源	检测设备	E5071C	检测条件	22.2°C / 43 %
检测目的	\				

检测结果记录

申请人/送样人	\	软件版本		硬件版本	—
---------	---	------	--	------	---

样机信息 (含S/N号)

H: xoy
E1: xoz
E2: zoy

备注说明

Freq (MHz)	Effi (%)	Gain (dBi)	Freq (MHz)	Effi (%)	Gain (dBi)	Freq (MHz)	Effi (%)	Gain (dBi)
5150	42.28	4.79	5390	41.66	5.98	5630	50.34	5.42
5160	42.33	4.7	5400	48.43	5.8	5640	50.79	5.96
5170	40.25	5.08	5410	45.69	6.49	5650	49.58	5.74
5180	39.44	5.07	5420	44.33	6.05	5660	52.5	5.74
5190	41.05	4.91	5430	46.53	6.91	5670	54.07	6.07
5200	41.36	4.36	5440	43.15	6.67	5680	51.24	5.51
5210	42.71	4.56	5450	45.37	6.62	5690	52.56	5.47
5220	41.23	5.41	5460	45.07	6.88	5700	53.65	5.55
5230	42.5	5.53	5470	46.51	6.8	5710	51.46	7.5
5240	40.24	4.81	5480	46.87	6.67	5720	49.27	5.49
5250	42.04	4.96	5490	46.76	6.58	5730	51.49	6.13
5260	41.3	5.16	5500	46.41	6.72	5740	49.68	5.09
5270	38.61	4.68	5510	47.08	7.29	5750	49.61	5.76
5280	40.81	4.78	5520	46.86	7.1	5760	51.81	6.89
5290	41.1	4.7	5530	48.29	6.92	5770	50.88	5.29
5300	41.88	6.1	5540	47.35	6.67	5780	49	6.5
5310	42.06	5.44	5550	49.29	6.27	5790	48.61	5.22
5320	41.4	5	5560	49.98	6.62	5800	48	5.38
5330	40.04	4.99	5570	52.17	6.13	5810	51.86	5.87
5340	41.62	5.3	5580	52.16	6.35	5820	56.94	6.26
5350	41.11	5.54	5590	48.51	6.15	5830	54.21	6.27
5360	42.09	5.44	5600	47.83	6.93	5840	54.44	6.31
5370	41.3	6.05	5610	52.14	6.38	5850	53.27	6.03
5380	42.63	5.65	5620	51.06	5.79			

5G1

Freq (MHz)	Effi (%)	Gain (dBi)	Freq (MHz)	Effi (%)	Gain (dBi)	Freq (MHz)	Effi (%)	Gain (dBi)
5150	44.05	3.39	5390	44.37	4.67	5630	50.4	4.76
5160	43.2	3.37	5400	49.3	5.03	5640	52.55	4.88
5170	43.4	3.57	5410	47.54	4.8	5650	51.75	4.9
5180	44.28	3.73	5420	46.55	4.73	5660	51.84	4.9
5190	44.95	3.76	5430	46.56	4.64	5670	52.05	4.99
5200	45.08	3.84	5440	45.51	4.49	5680	51.6	5
5210	45.49	3.86	5450	45.07	4.42	5690	50.98	5.08

5220	45.35	3.99	5460	45.83	4.48	5700	50.59	5.15
5230	45.17	4	5470	45.7	4.46	5710	50.15	5.2
5240	45.04	4.19	5480	46.53	4.6	5720	50.17	5.21
5250	44.42	4.22	5490	46.01	4.56	5730	50.29	4.96
5260	44.49	4.45	5500	46.33	4.63	5740	49.95	5.18
5270	43.43	4.47	5510	46.17	4.65	5750	49.59	5.08
5280	44.74	4.78	5520	47.3	4.74	5760	49.31	5.06
5290	44.62	4.75	5530	47.4	4.81	5770	48	4.82
5300	46.4	5.09	5540	47.84	4.91	5780	47.71	4.89
5310	45.48	5	5550	48.65	4.98	5790	47.7	4.86
5320	45.87	5.1	5560	48.88	5.09	5800	47.71	4.88
5330	44.58	4.97	5570	49.19	4.98	5810	49.08	5.15
5340	45.51	5.06	5580	49.19	5.02	5820	49.65	5.36
5350	45.2	5.02	5590	49.34	4.96	5830	50.29	5.41
5360	45.21	4.94	5600	49.53	4.86	5840	51.91	5.47
5370	44.69	4.72	5610	50.65	4.93	5850	51.63	5.41
5380	44.39	4.72	5620	49.78	4.75			

5G2

Freq (MHz)	Effi (%)	Gain (dBi)	Freq (MHz)	Effi (%)	Gain (dBi)	Freq (MHz)	Effi (%)	Gain (dBi)
5150	46.03	4.31	5390	46.33	5.3	5630	58.05	6.16
5160	45.94	4.2	5400	51.7	5.81	5640	60.37	6.5
5170	45.35	4.25	5410	49.91	5.6	5650	58.87	6.47
5180	45.96	4.26	5420	49.38	5.59	5660	60.12	6.47
5190	47.27	4.4	5430	49.28	5.51	5670	60.04	6.44
5200	48.46	4.51	5440	48.42	5.58	5680	59.74	6.38
5210	48.91	4.39	5450	48.1	5.7	5690	59.16	6.45
5220	48.19	4.5	5460	49.56	5.77	5700	59.37	6.64
5230	48.22	4.73	5470	49.29	5.62	5710	58.54	6.34
5240	48.31	4.78	5480	50.09	5.9	5720	58.27	6.13
5250	47.75	4.9	5490	49.27	6.03	5730	57.95	6.11
5260	46.93	4.92	5500	50.32	5.9	5740	58.2	6.19
5270	46.44	4.97	5510	51.19	6.07	5750	57.8	6.11
5280	47.73	5.17	5520	52.11	6.16	5760	56.67	5.94
5290	47.45	5.18	5530	52.29	6.04	5770	54.89	5.67
5300	48.76	5.42	5540	52.91	6.01	5780	54.67	5.54
5310	48.91	5.52	5550	54.43	6.19	5790	54.12	5.62
5320	48.69	5.7	5560	55.25	6.26	5800	54.73	5.63
5330	46.5	5.54	5570	55.86	6.2	5810	56.02	5.73
5340	47.39	5.49	5580	55.6	5.96	5820	56.72	5.83
5350	47.74	5.66	5590	56.34	6.37	5830	56.73	5.73
5360	47.05	5.58	5600	56.05	5.93	5840	58.61	5.9
5370	46.48	5.37	5610	57.51	6.12	5850	58.13	5.85
5380	45.87	5.36	5620	56.83	6.16			

5G3

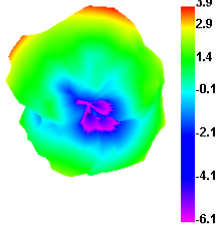
检测人员/日期		审核/日期	
---------	--	-------	--



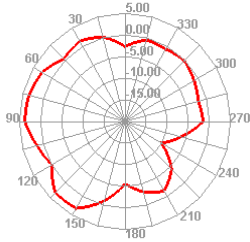
5G1

5G2

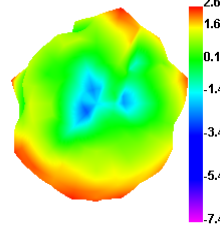
2400.000MHz



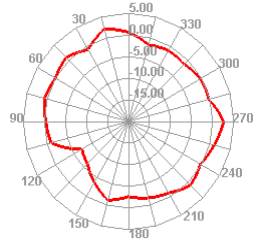
2400.000MHz H



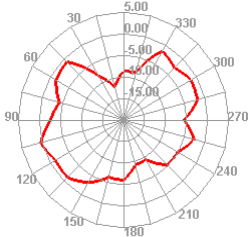
2400.000MHz



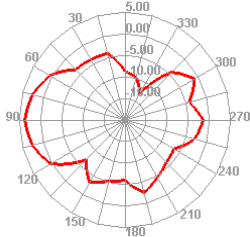
2400.000MHz H



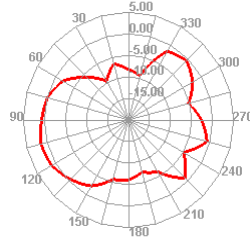
2400.000MHz E1



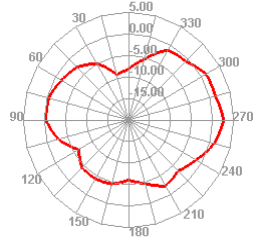
2400.000MHz E2



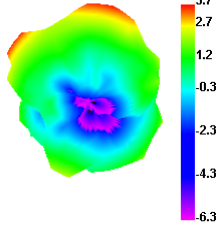
2400.000MHz E1



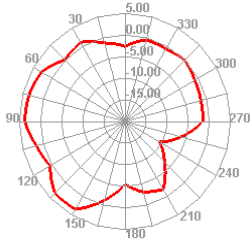
2400.000MHz E2



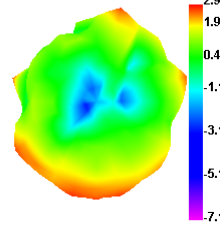
2410.000MHz



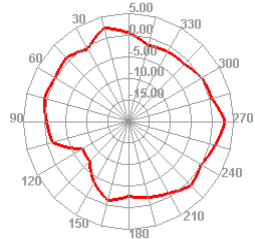
2410.000MHz H



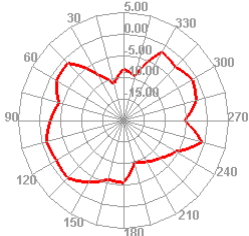
2410.000MHz



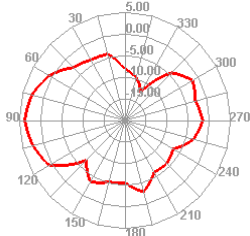
2410.000MHz H



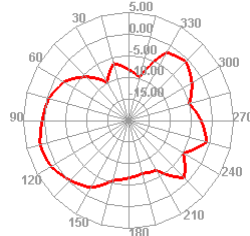
2410.000MHz E1



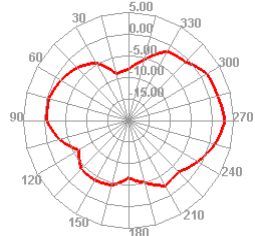
2410.000MHz E2



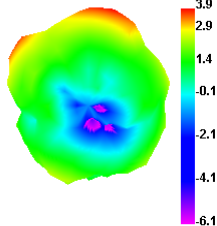
2410.000MHz E1



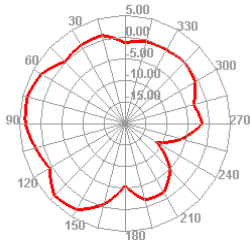
2410.000MHz E2



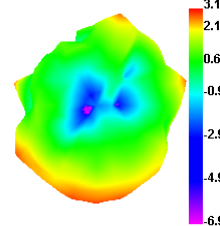
2420.000MHz



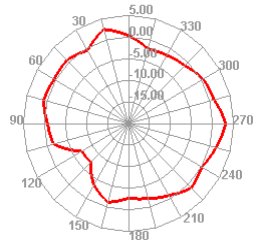
2420.000MHz H



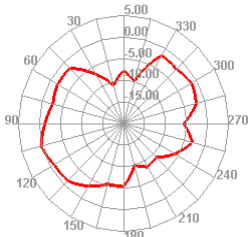
2420.000MHz



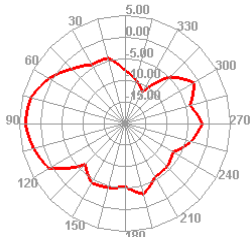
2420.000MHz H



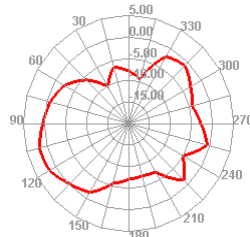
2420.000MHz E1



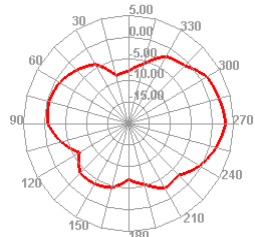
2420.000MHz E2



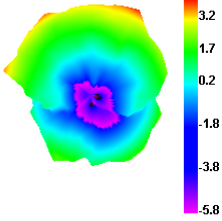
2420.000MHz E1



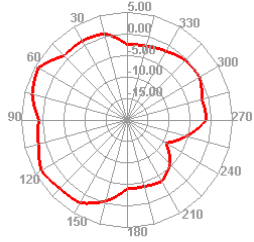
2420.000MHz E2



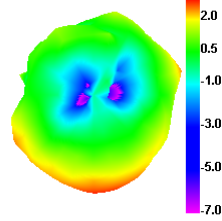
2490.000MHz



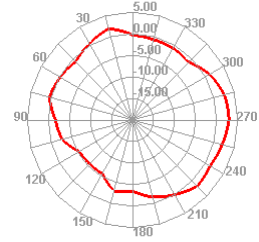
2490.000MHz H



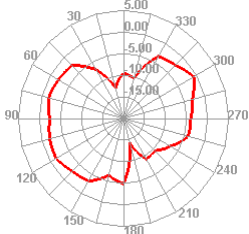
2490.000MHz



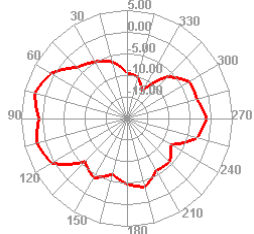
2490.000MHz H



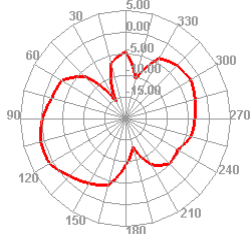
2490.000MHz E1



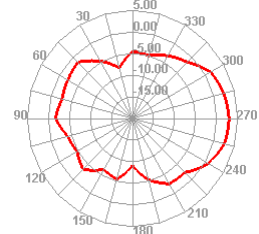
2490.000MHz E2



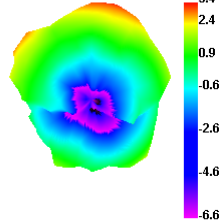
2490.000MHz E1



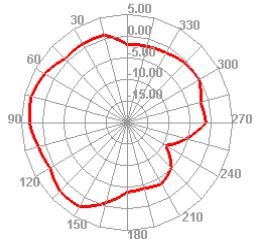
2490.000MHz E2



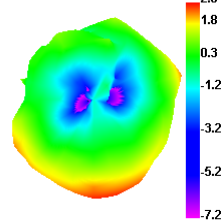
2500.000MHz



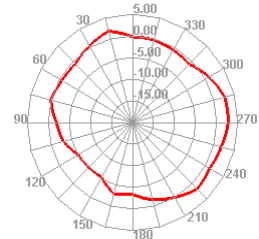
2500.000MHz H



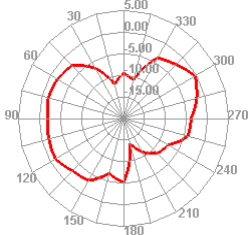
2500.000MHz



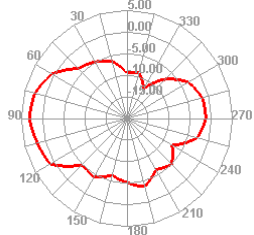
2500.000MHz H



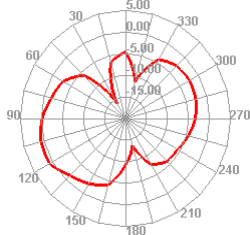
2500.000MHz E1



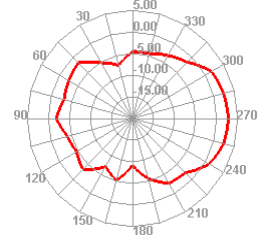
2500.000MHz E2



2500.000MHz E1



2500.000MHz E2

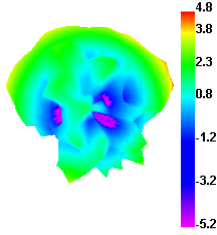




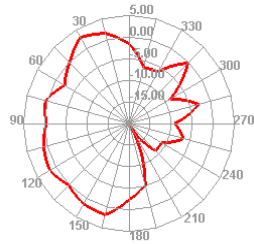
5G1

5G2

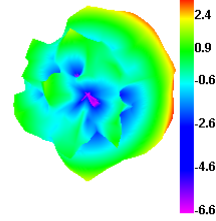
5150.000MHz



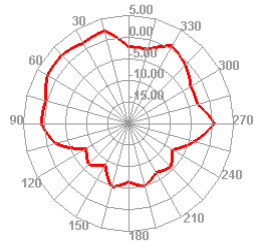
5150.000MHz H



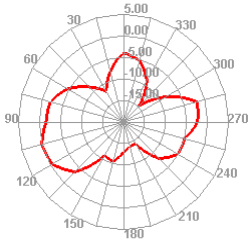
5150.000MHz



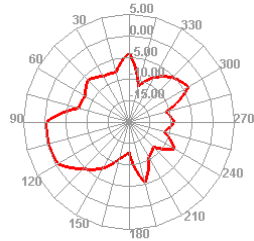
5150.000MHz H



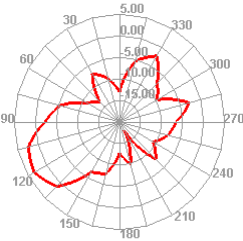
5150.000MHz E1



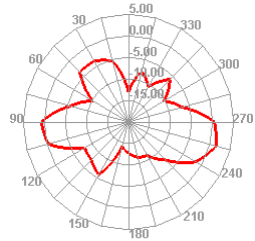
5150.000MHz E2



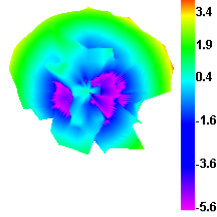
5150.000MHz E1



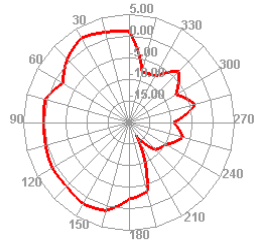
5150.000MHz E2



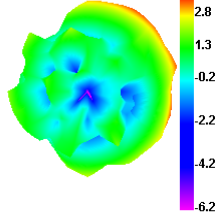
5200.000MHz



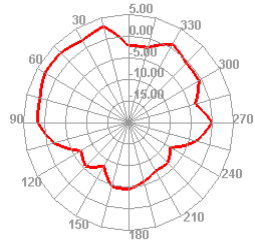
5200.000MHz H



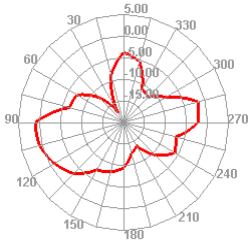
5200.000MHz



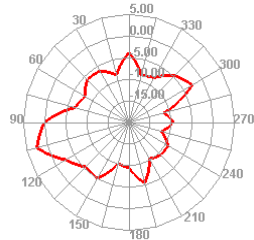
5200.000MHz H



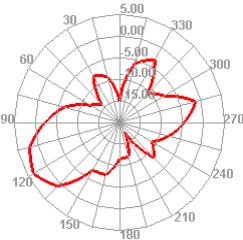
5200.000MHz E1



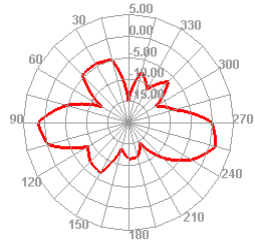
5200.000MHz E2



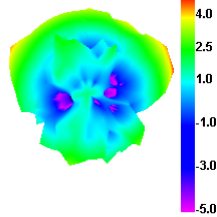
5200.000MHz E1



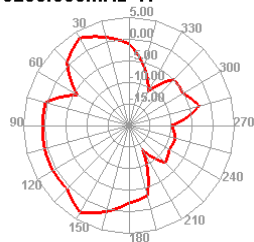
5200.000MHz E2



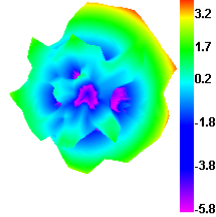
5250.000MHz



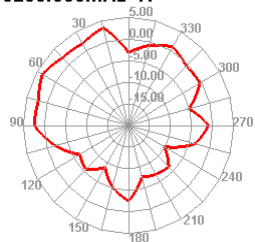
5250.000MHz H



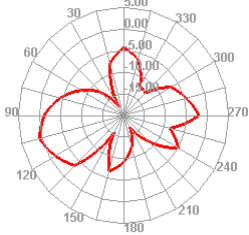
5250.000MHz



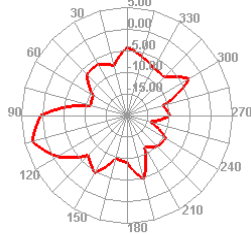
5250.000MHz H



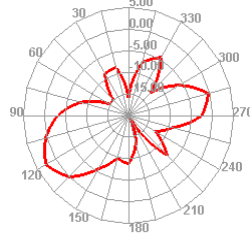
5250.000MHz E1



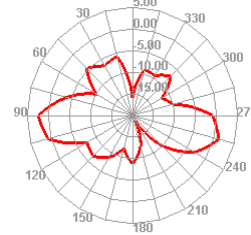
5250.000MHz E2



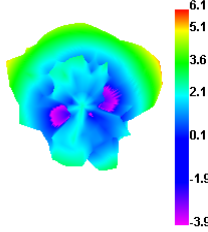
5250.000MHz E1



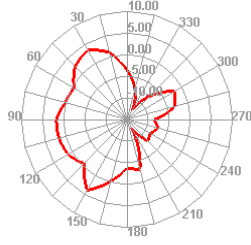
5250.000MHz E2



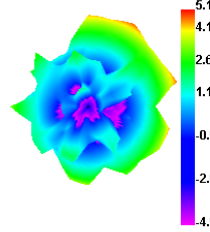
5300.000MHz



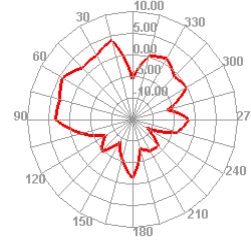
5300.000MHz H



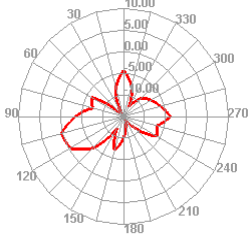
5300.000MHz



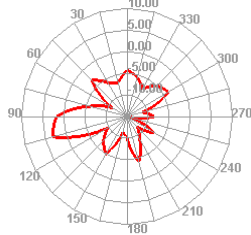
5300.000MHz H



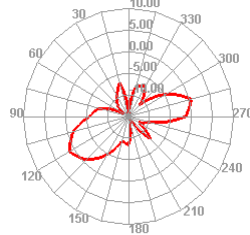
5300.000MHz E1



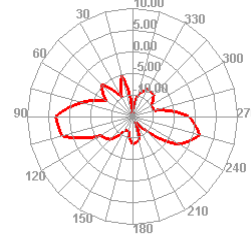
5300.000MHz E2



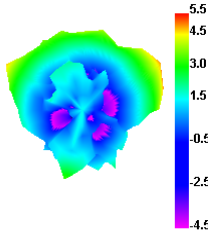
5300.000MHz E1



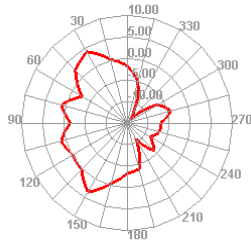
5300.000MHz E2



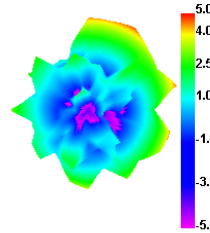
5350.000MHz



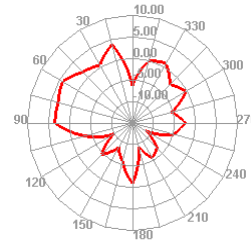
5350.000MHz H



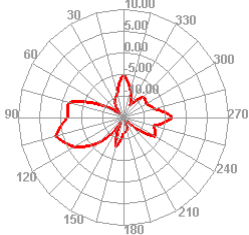
5350.000MHz



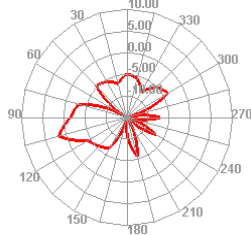
5350.000MHz H



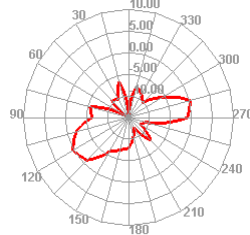
5350.000MHz E1



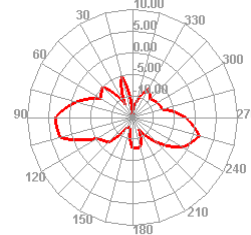
5350.000MHz E2



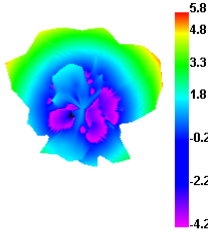
5350.000MHz E1



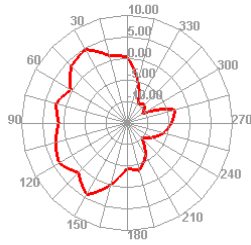
5350.000MHz E2



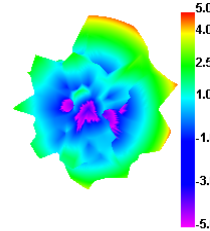
5400.000MHz



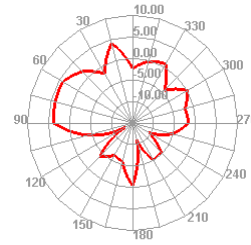
5400.000MHz H

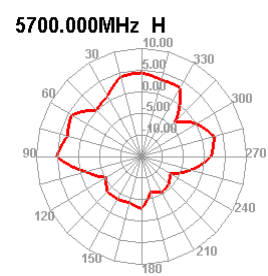
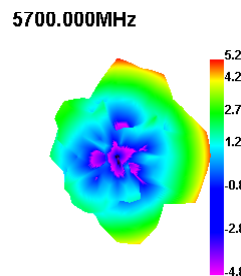
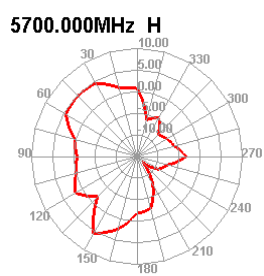
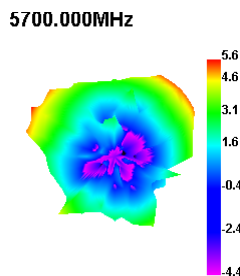
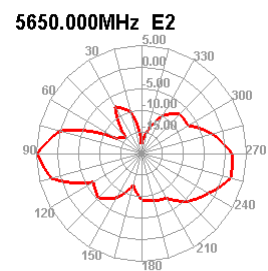
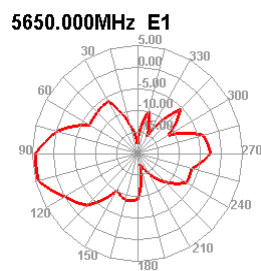
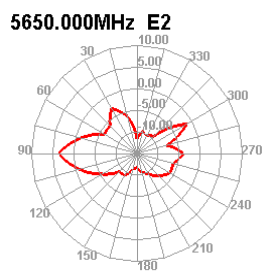
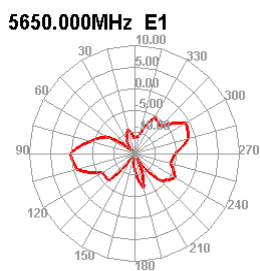
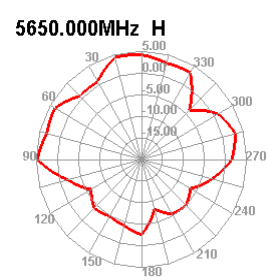
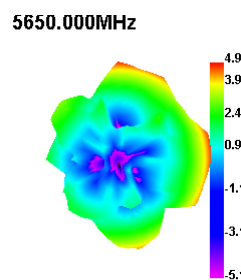
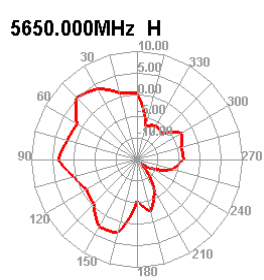
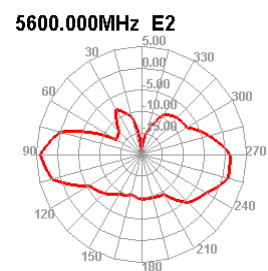
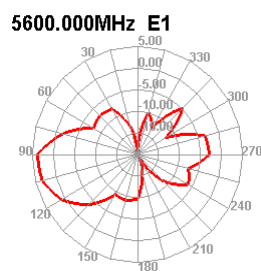
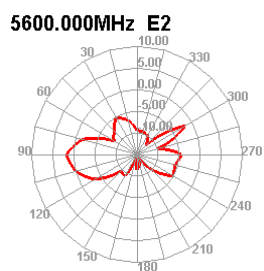
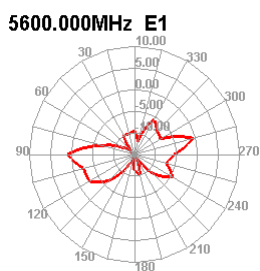
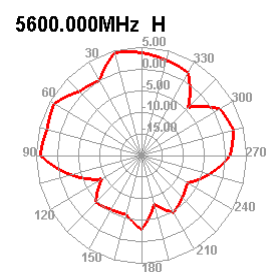
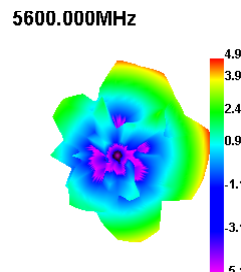
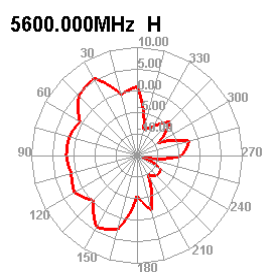
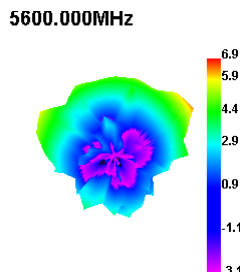
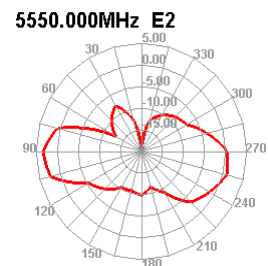
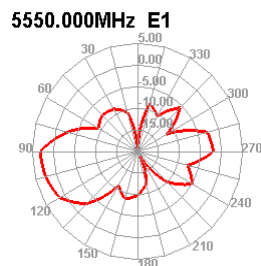
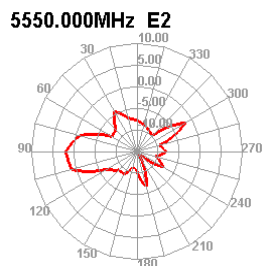
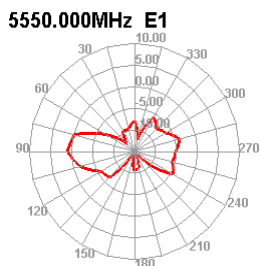


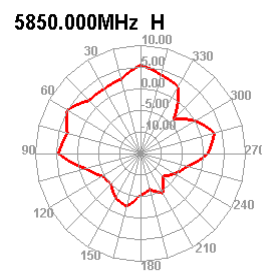
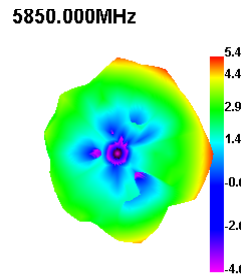
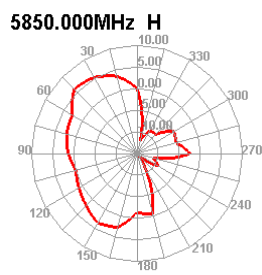
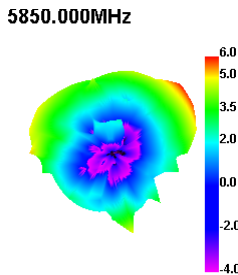
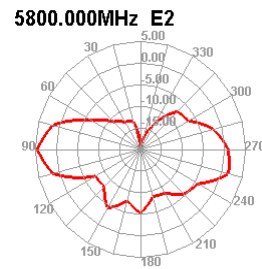
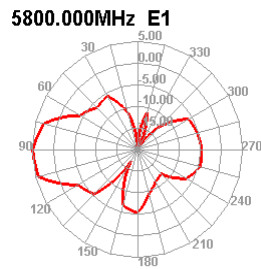
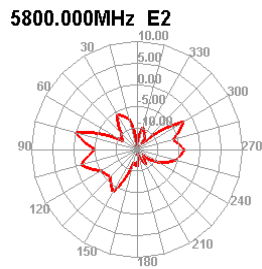
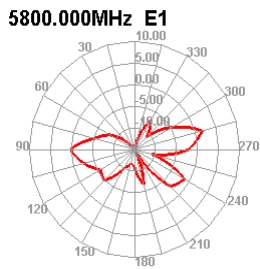
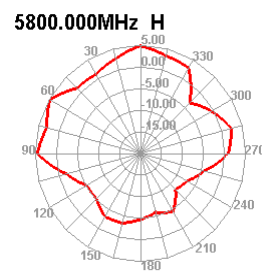
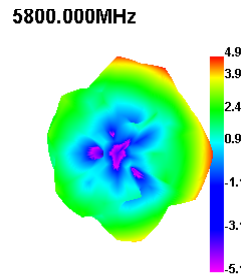
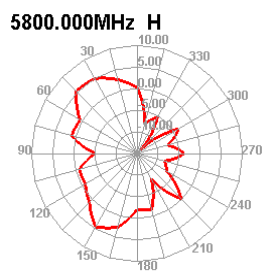
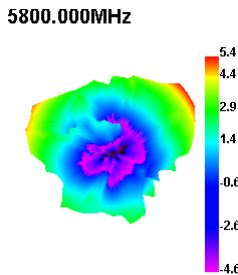
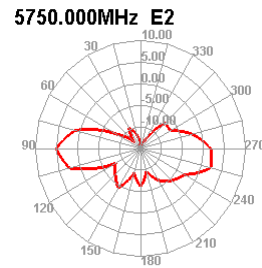
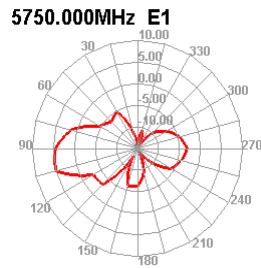
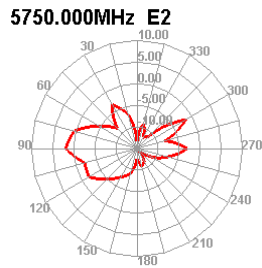
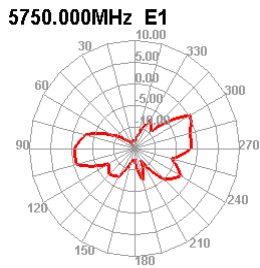
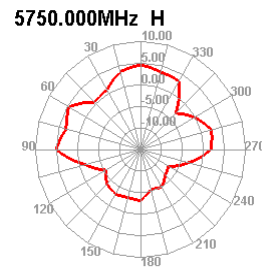
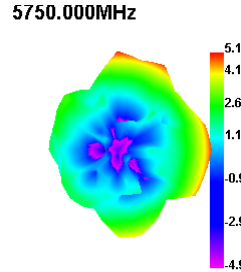
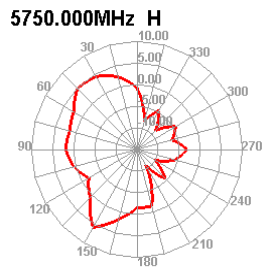
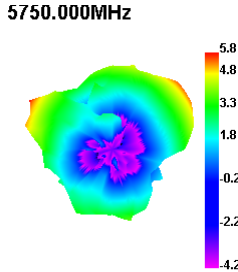
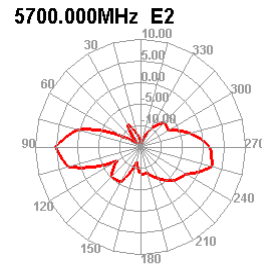
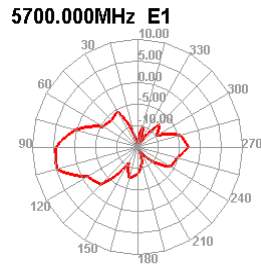
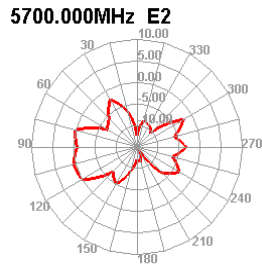
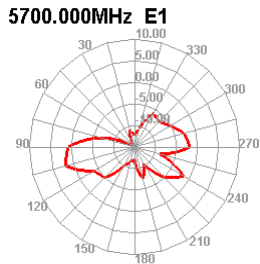
5400.000MHz



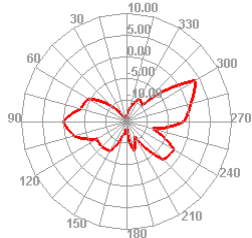
5400.000MHz H



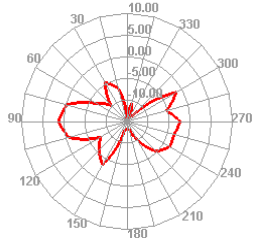




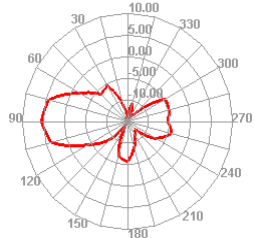
5850.000MHz E1



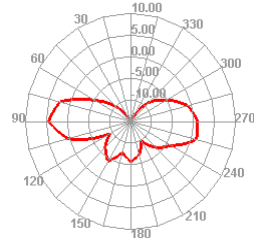
5850.000MHz E2



5850.000MHz E1

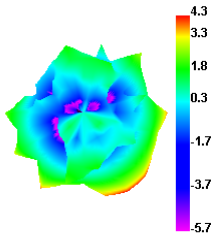


5850.000MHz E2

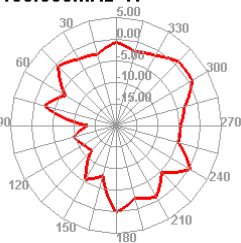




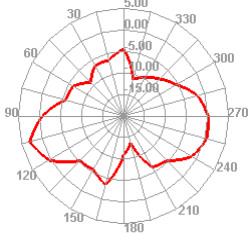
5150.000MHz



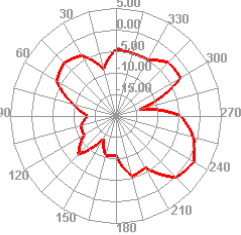
5150.000MHz H



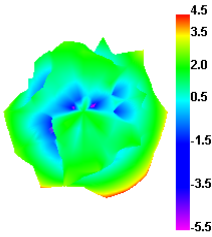
5150.000MHz E1



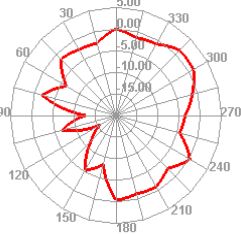
5150.000MHz E2



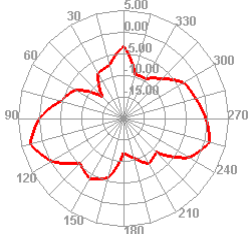
5200.000MHz



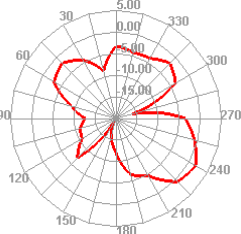
5200.000MHz H



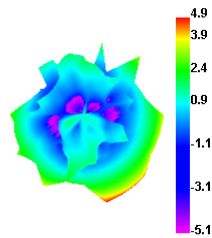
5200.000MHz E1



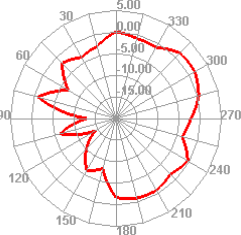
5200.000MHz E2



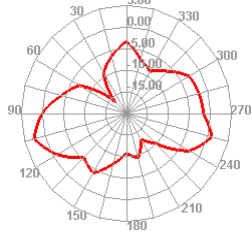
5250.000MHz



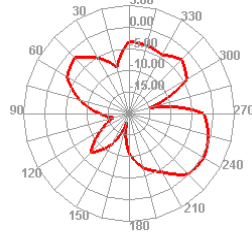
5250.000MHz H



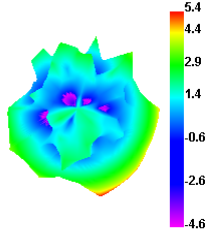
5250.000MHz E1



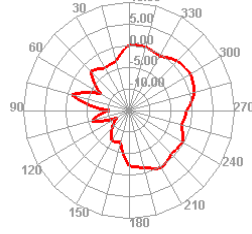
5250.000MHz E2



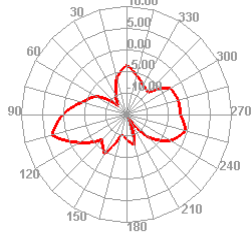
5300.000MHz



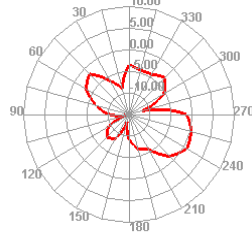
5300.000MHz H



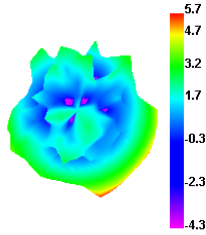
5300.000MHz E1



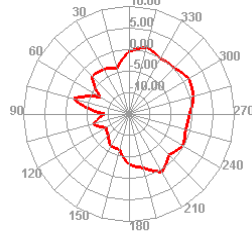
5300.000MHz E2



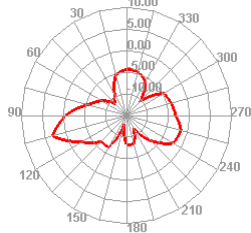
5350.000MHz



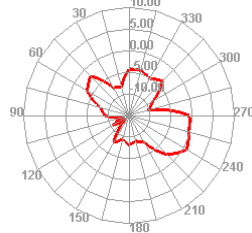
5350.000MHz H



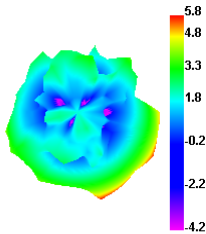
5350.000MHz E1



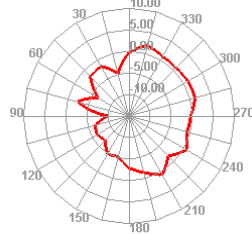
5350.000MHz E2



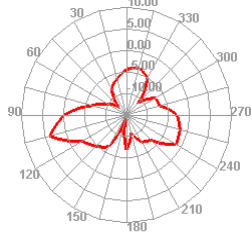
5400.000MHz



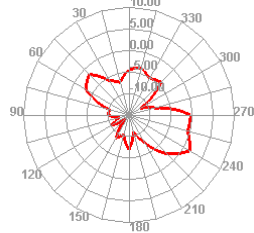
5400.000MHz H



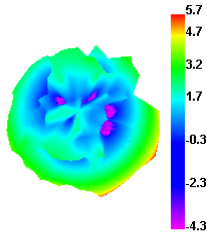
5400.000MHz E1



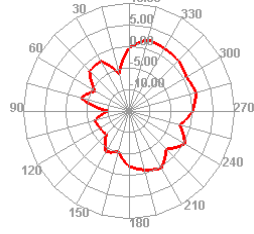
5400.000MHz E2



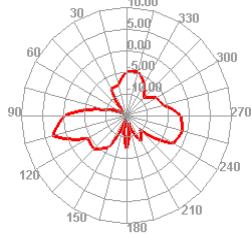
5450.000MHz



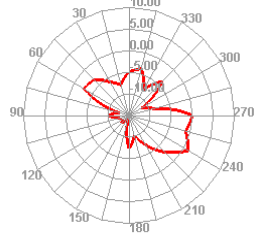
5450.000MHz H



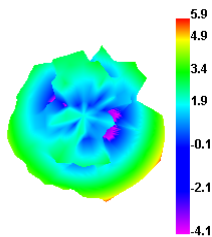
5450.000MHz E1



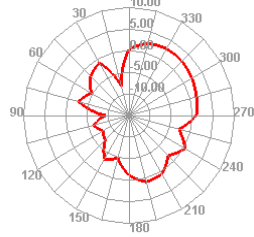
5450.000MHz E2



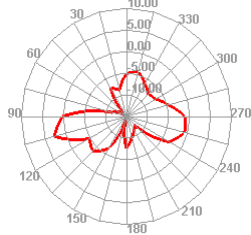
5500.000MHz



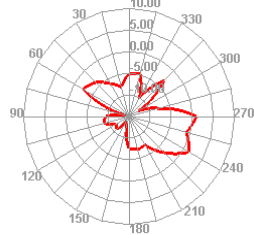
5500.000MHz H



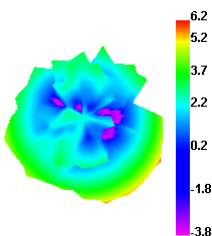
5500.000MHz E1



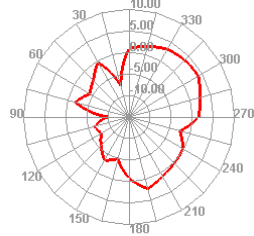
5500.000MHz E2



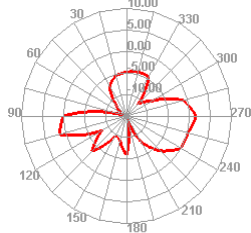
5550.000MHz



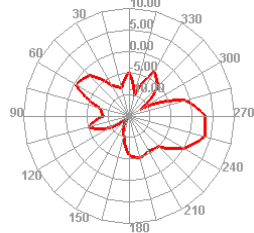
5550.000MHz H



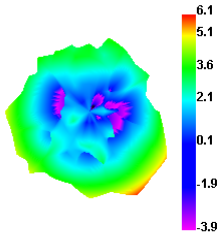
5700.000MHz E1



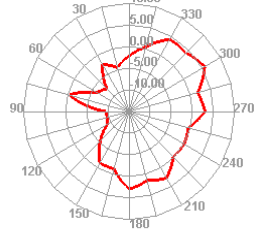
5700.000MHz E2



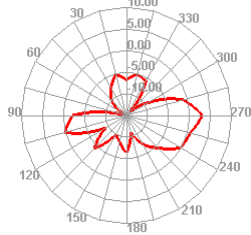
5750.000MHz



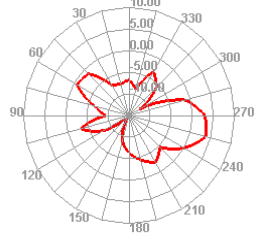
5750.000MHz H



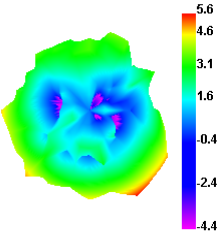
5750.000MHz E1



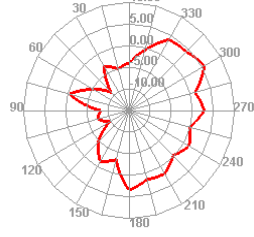
5750.000MHz E2



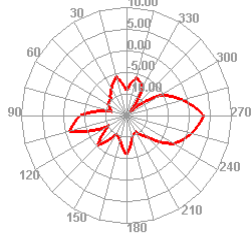
5800.000MHz



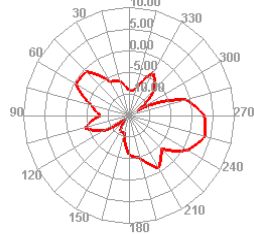
5800.000MHz H



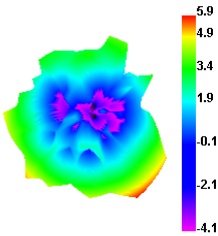
5800.000MHz E1



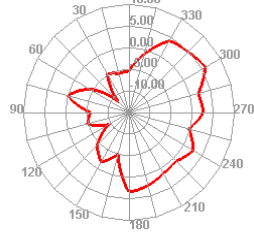
5800.000MHz E2



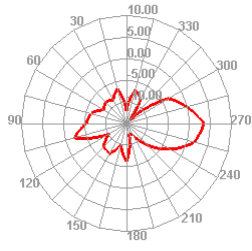
5850.000MHz



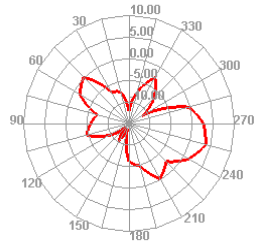
5850.000MHz H



5850.000MHz E1

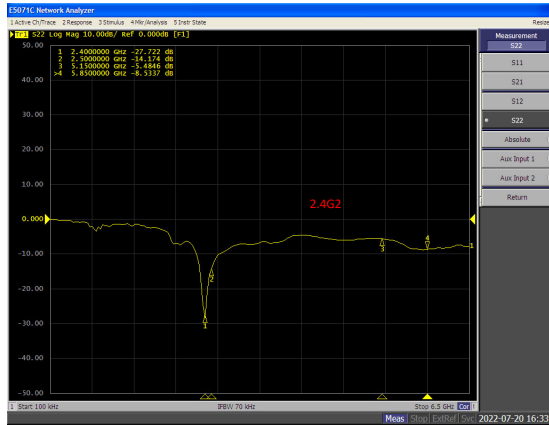
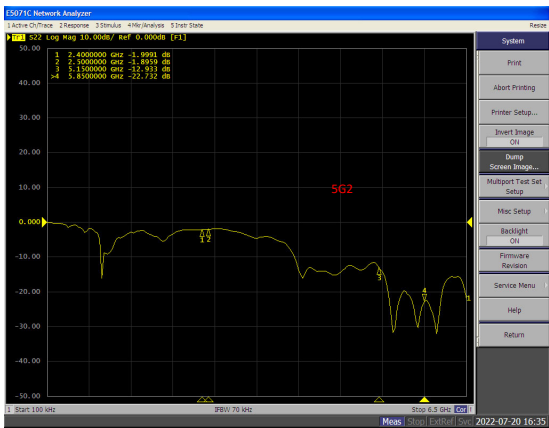
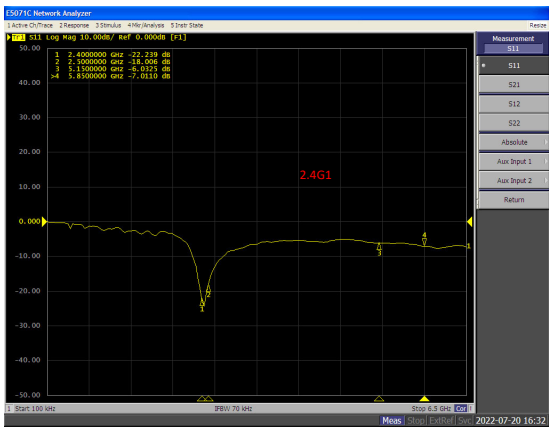
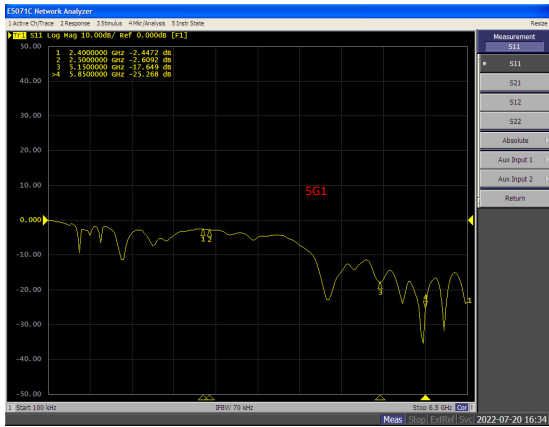


5850.000MHz E2





捷雷科技 OTA 实验室测试报告



捷雷科技 OTA 实验室测试报告

