



捷雷科技 OTA 实验室测试报告

检测结果记录表

样品名称		样机型号		申请单编号	
检测依据	国标	样品数量	1台	样品编号	
检测项目	无源	检测设备	E5071C	检测条件	22.2℃/ 43 %
检测目的	\				

检测结果记录

申请人/送样人	\	软件版本		硬件版本	—
样机信息 (含S/N号)					

备注说明

Freq (MHz)	Effi (%)	Max (dB)	Freq (MHz)	Effi (%)	Max (dB)	Freq (MHz)	Effi (%)	Max (dB)
2400	73.9	4.54	2400	64.96	3.51	2400	68.16	3.99
2410	70.36	4.21	2410	61.98	3.16	2410	63.62	3.78
2420	68.6	4.01	2420	61.86	3.02	2420	61.22	3.6
2430	69.05	4.12	2430	63.41	3.18	2430	60.65	3.47
2440	68.51	4.16	2440	63.67	3.08	2440	59.31	3.22
2450	65.46	4.02	2450	60.99	2.83	2450	56.91	2.59
2460	65.99	4.12	2460	61.43	2.79	2460	58.91	2.48
2470	66.5	4.15	2470	61.62	3.12	2470	62.6	2.89
2480	65.56	4.14	2480	59.77	3.09	2480	62.04	3.18
2490	62.08	3.88	2490	55.84	2.96	2490	59.79	3.51
2500	61.89	3.87	2500	55.7	3	2500	59.42	3.91
2.4G1			2.4G2			2.4G3		
Freq (MHz)	Effi (%)	Max (dB)	Freq (MHz)	Effi (%)	Max (dB)	Freq (MHz)	Effi (%)	Max (dB)
2400	72.9	3.73	2400	64.08	7.03			
2410	69.67	3.43	2410	61.69	6.85			
2420	68.69	3.27	2420	60.24	6.67			
2430	69.61	3.49	2430	60.22	6.59			
2440	68.84	3.34	2440	58.87	6.54			
2450	64.55	3.15	2450	53.6	6.13			
2460	64.88	3.23	2460	52.24	5.99			
2470	66.7	3.62	2470	52.47	5.71			
2480	64.89	3.69	2480	52.96	5.35			
2490	62.21	3.76	2490	50.43	5.02			
2500	64.36	4.11	2500	51.23	5.18			
2.4G4			BT					
Freq (MHz)	Effi (%)	Max (dB)	Freq (MHz)	Effi (%)	Max (dB)	Freq (MHz)	Effi (%)	Max (dB)
5150	60.91	5.33	5390	55.65	5.12	5630	73.42	5.54
5160	60.28	4.79	5400	55.58	4.95	5640	67.4	5.56
5170	60.83	5.11	5410	57.77	5.04	5650	66.18	5.04
5180	60.39	4.96	5420	59.26	4.77	5660	65.84	4.57
5190	62.06	5.01	5430	60.36	4.95	5670	70.23	4.64
5200	60.63	5.17	5440	60.36	4.82	5680	67.57	4.4
5210	56.04	4.6	5450	62.82	5.48	5690	64.44	4.56
5220	57.82	5.09	5460	62.16	5.45	5700	65.72	4.55
5230	57.89	5.09	5470	64.88	5.62	5710	68.54	4.5

5240	56.7	5.21	5480	65.77	5.52	5720	72.61	4.5
5250	52.9	4.49	5490	65.49	5.61	5730	71.52	4.74
5260	55.96	4.52	5500	67.77	5.68	5740	72.58	4.9
5270	55.73	4.55	5510	69.34	5.47	5750	73.15	4.96
5280	50.76	4.26	5520	71.76	5.62	5760	72.95	5.02
5290	50.05	3.78	5530	67.85	5.32	5770	73.63	5.05
5300	52.26	3.58	5540	65.83	5.28	5780	72.48	5.32
5310	54.25	4.13	5550	68.04	4.99	5790	73.48	4.95
5320	50.17	4.29	5560	68.66	5.16	5800	75.05	5.39
5330	51.54	4.42	5570	65.69	4.74	5810	74	5.56
5340	56.03	4.53	5580	67.7	5.19	5820	74.14	5.45
5350	58.17	4.56	5590	70.56	5.34	5830	73.39	5.7
5360	54.87	5.78	5600	71	5.62	5840	70	5.55
5370	54.03	5.5	5610	66.43	5.61	5850	71.4	5.81
5380	55.46	5.41	5620	67.64	5.39			

5G1

Freq (MHz)	Effi (%)	Max (dB)	Freq (MHz)	Effi (%)	Max (dB)	Freq (MHz)	Effi (%)	Max (dB)
5150	58.56	5.84	5390	56.7	4.74	5630	67.53	5.06
5160	58.18	3.97	5400	56.75	4.49	5640	62.92	5.08
5170	58.07	4.28	5410	59.61	4.83	5650	59.93	5.12
5180	57.45	4.06	5420	60.66	4.85	5660	61.11	5.06
5190	59.34	4.22	5430	59.96	4.64	5670	64.36	5.16
5200	57.92	4.38	5440	60.34	4.77	5680	62.5	5.1
5210	52.47	3.87	5450	63.58	4.87	5690	59	5.07
5220	55.25	4.22	5460	61.51	4.93	5700	60.45	4.99
5230	55.2	4.09	5470	63.4	4.92	5710	63.36	5.15
5240	54.48	4.08	5480	64.59	4.86	5720	64.92	5.12
5250	51.01	3.83	5490	63.46	4.88	5730	66.04	6.06
5260	54.81	4.06	5500	65.02	4.92	5740	66.55	6.1
5270	54.52	4.05	5510	68.19	4.89	5750	66.09	6.12
5280	50.02	3.79	5520	69.72	4.96	5760	65.87	6.14
5290	50.05	3.78	5530	66.13	4.95	5770	65.5	6.18
5300	53.32	4.12	5540	64.71	5.06	5780	63.91	6.02
5310	54.54	4.29	5550	66.98	5.12	5790	65.5	6.11
5320	51.95	4.01	5560	68.44	5.08	5800	65.36	6.08
5330	53.88	4.13	5570	64.71	5.06	5810	64.43	5.99
5340	58.03	4.79	5580	66.32	4.98	5820	63.56	5.47
5350	59.73	4.79	5590	70.04	4.99	5830	62.18	5.22
5360	56.51	4.34	5600	67.91	5.06	5840	60.05	5.09
5370	55.51	4.36	5610	64.55	5.02	5850	60.91	4.64
5380	57.08	4.47	5620	62.71	5.11			

5G2

Freq (MHz)	Effi (%)	Max (dB)	Freq (MHz)	Effi (%)	Max (dB)	Freq (MHz)	Effi (%)	Max (dB)
5150	59.14	5.55	5390	57.62	3.73	5630	74.85	5.56
5160	57.87	5.57	5400	58.14	3.65	5640	70.09	5.21
5170	58.54	5.41	5410	60.05	3.86	5650	66.71	4.99
5180	58.22	6.39	5420	61.66	4.34	5660	69.01	5.12
5190	60.27	5.52	5430	62.26	4.87	5670	72.82	5.62
5200	59.35	5.13	5440	62.21	5.5	5680	69.99	5.3
5210	55.17	4.99	5450	64.91	5.86	5690	67.55	5.54
5220	56.55	5.12	5460	64.01	6.04	5700	70.25	4.91
5230	57.04	5	5470	66.3	6.12	5710	72.29	4.86
5240	56.53	4.97	5480	66.99	6.49	5720	75.24	5.38
5250	53.13	4.56	5490	67.42	6.18	5730	73.78	5.63
5260	56.13	4.77	5500	68.3	6.56	5740	76.52	5.68
5270	55.65	4.76	5510	71.07	6.55	5750	75.83	5.71
5280	51.78	4.51	5520	72.53	6.56	5760	75.49	6.83
5290	50.91	4.35	5530	70.04	6.13	5770	75.99	5.55
5300	53.75	4.6	5540	67.69	5.68	5780	74.69	5.46
5310	54.57	4.69	5550	71.37	5.5	5790	76.91	5.03
5320	52.24	4.5	5560	71.72	5.85	5800	76.68	5.23
5330	53.81	4.64	5570	67.01	5.8	5810	77.06	5.5
5340	57.24	5.08	5580	68.53	5.93	5820	74.64	5.46
5350	59.22	6.06	5590	72.51	6.12	5830	74.14	5.22
5360	56.24	4.74	5600	71.75	6.24	5840	72.26	5.49
5370	55.4	4.33	5610	67.98	5.55	5850	70.19	5.62
5380	57.13	4.12	5620	67.67	4.78			

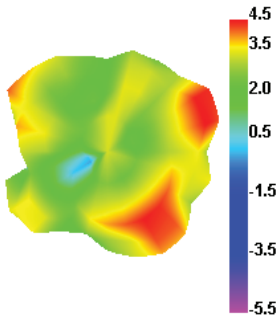
5G3

Freq (MHz)	Effi (%)	Max (dB)	Freq (MHz)	Effi (%)	Max (dB)	Freq (MHz)	Effi (%)	Max (dB)
5150	57.97	4.31	5390	51.43	4.96	5630	66.67	5.07

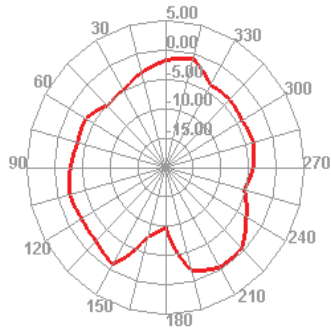
5160	55.78	4.7	5400	51.37	4.77	5640	61.8	4.71
5170	56.16	4.5	5410	54.78	5.48	5650	60.51	4.8
5180	55.48	4.6	5420	56.18	5.41	5660	64.19	4.85
5190	58.43	4.9	5430	55.74	5.47	5670	67.96	5.27
5200	57.52	5.01	5440	55.01	5.02	5680	64.72	4.91
5210	51.63	4.78	5450	57.5	5.24	5690	63.19	5.4
5220	53.53	4.75	5460	57.46	5.18	5700	65.46	5.48
5230	53.66	5.47	5470	59.14	5.06	5710	68.17	5.8
5240	53.65	5.8	5480	60.49	5.05	5720	67.62	5.88
5250	51.93	5.71	5490	59.87	4.79	5730	67.44	5.78
5260	54.59	6.3	5500	62.27	4.86	5740	69.24	5.56
5270	54.56	7.16	5510	64.28	5.06	5750	67.39	5.69
5280	49.17	5.52	5520	66.49	5.02	5760	67.64	7.03
5290	48.63	5.35	5530	64.16	4.77	5770	68.08	7.17
5300	51.69	5.18	5540	61.94	5.14	5780	68.01	6.38
5310	51.59	5.19	5550	64.73	4.78	5790	68.27	6.25
5320	47.9	5.06	5560	63.54	4.72	5800	70.55	6.57
5330	49.97	5.83	5570	60.4	4.71	5810	69.47	6.48
5340	52.49	5.77	5580	60.53	5.05	5820	67.63	6.5
5350	52.99	5.65	5590	65.25	5.31	5830	66.42	7.29
5360	50.33	5.14	5600	63.18	5.23	5840	63.4	7.36
5370	51.07	5.12	5610	60.05	4.95	5850	63.85	7.43
5380	51.23	5.34	5620	60.48	5.11			
5G4								
检测人员/日期			Eden/2022					

Manufactuer: Fuzhou JieLei Electronic Technology Co.,Ltd.
 Address: C1-1425, Fuli Center, Taijiang District, Fuzhou City, Fujian Province
 Part No.: NDM-2.4G&5G-RAP6261 (CD) 天线
 JL P/N: C168-JL-7132

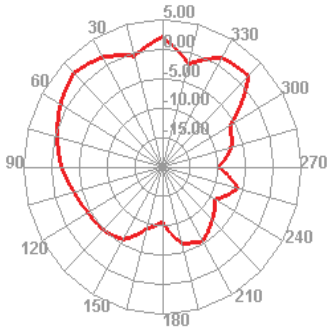
2400.000MHz



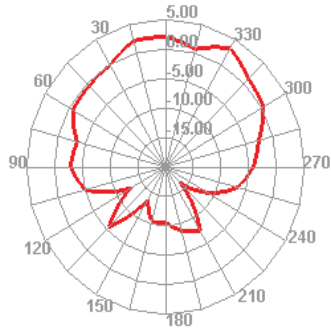
2400.000MHz H



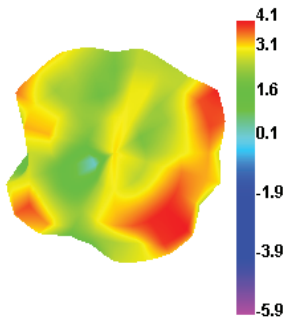
2400.000MHz E1



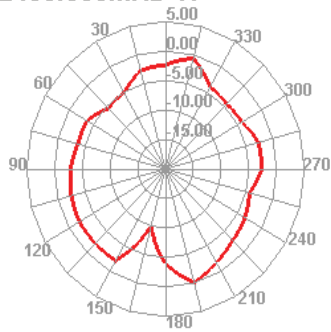
2400.000MHz E2



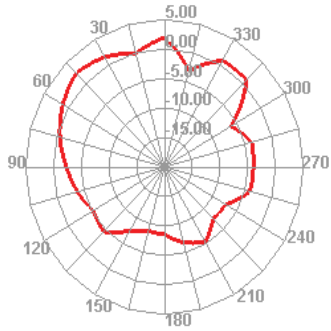
2430.000MHz



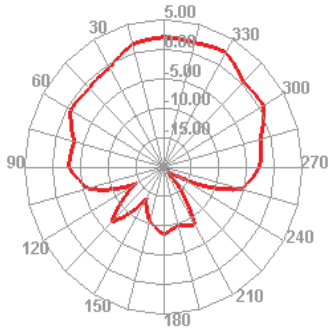
2430.000MHz H



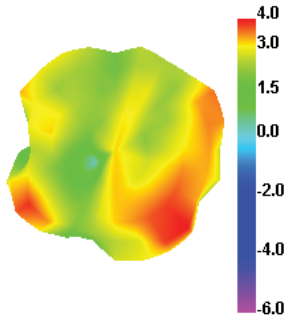
2430.000MHz E1



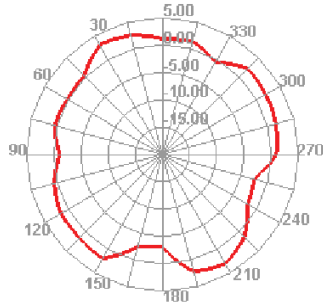
2430.000MHz E2



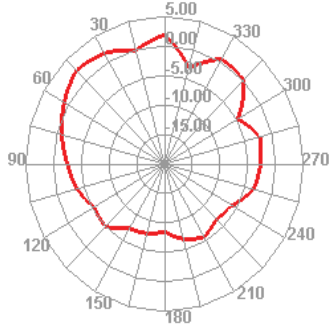
2450.000MHz



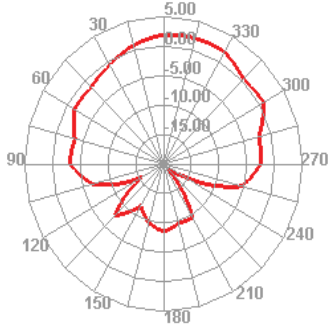
2450.000MHz H



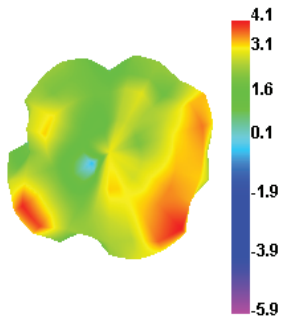
2450.000MHz E1



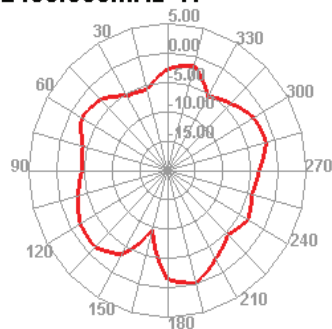
2450.000MHz E2



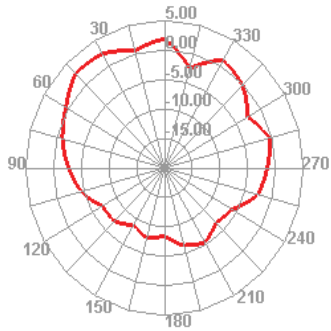
2480.000MHz



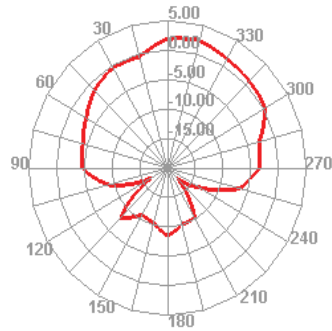
2480.000MHz H



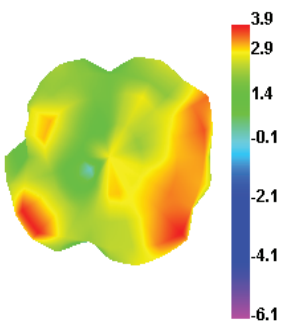
2480.000MHz E1



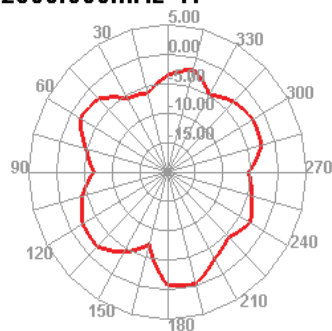
2480.000MHz E2



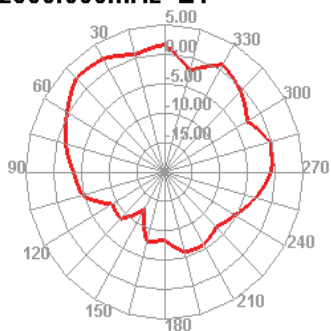
2500.000MHz



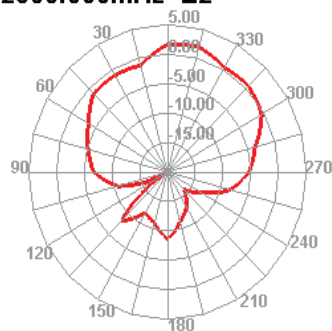
2500.000MHz H



2500.000MHz E1

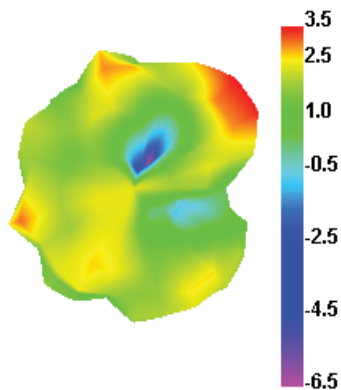


2500.000MHz E2

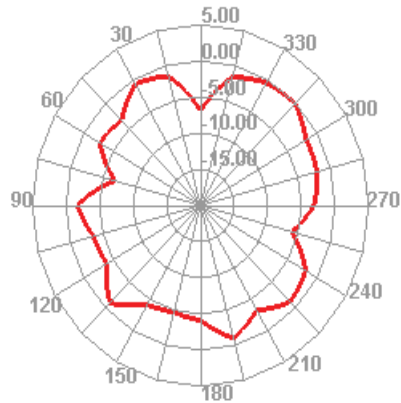




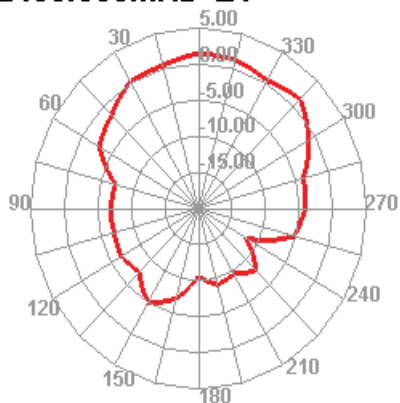
2400.000MHz



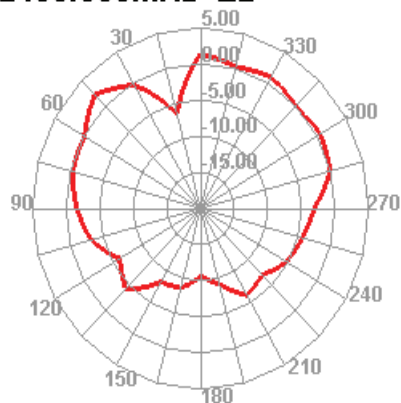
2400.000MHz H



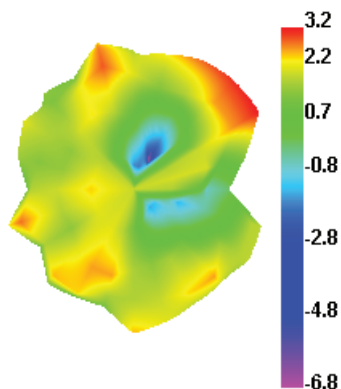
2400.000MHz E1



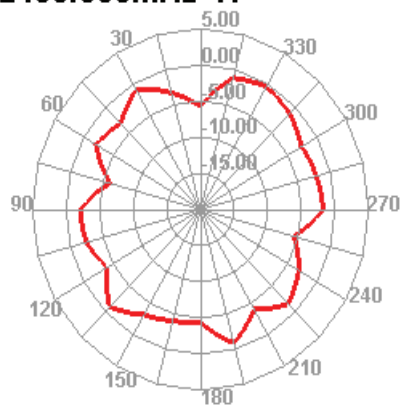
2400.000MHz E2



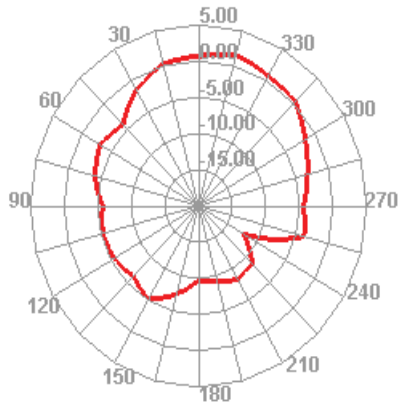
2430.000MHz



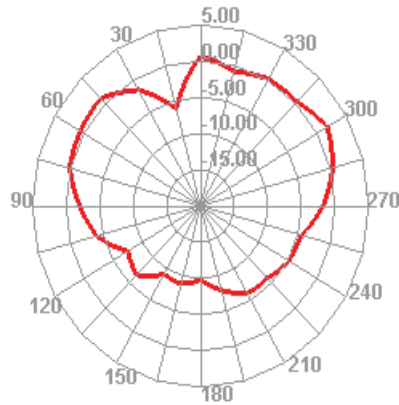
2430.000MHz H



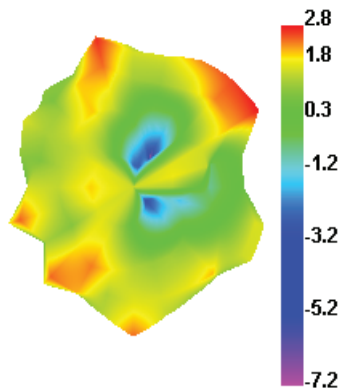
2430.000MHz E1



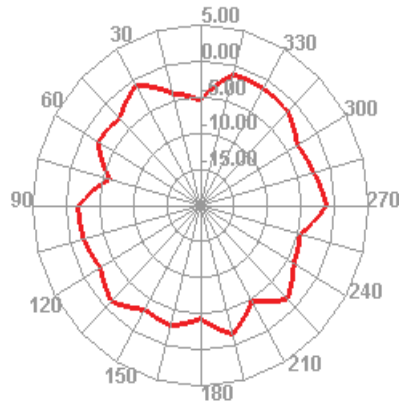
2430.000MHz E2



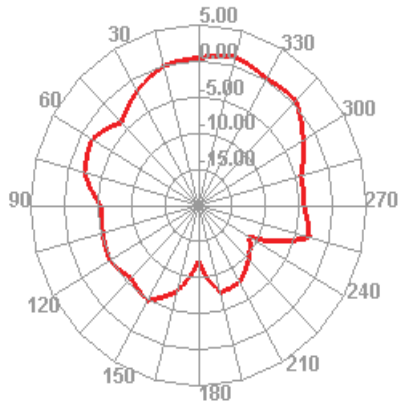
2450.000MHz



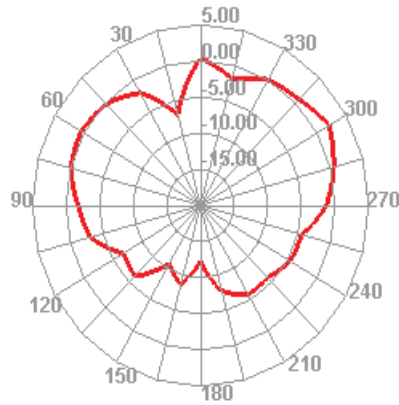
2450.000MHz H



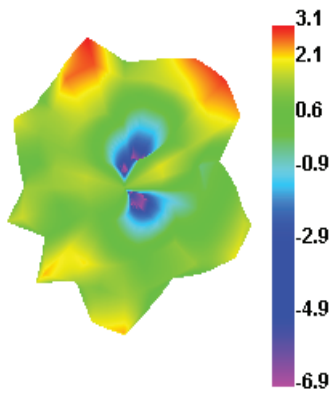
2450.000MHz E1



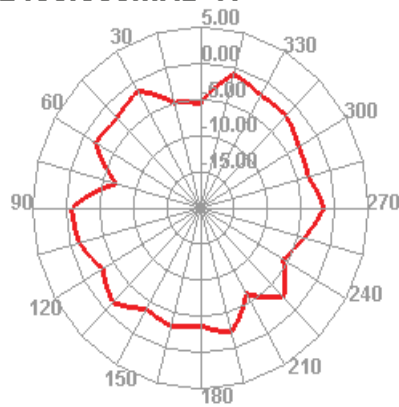
2450.000MHz E2



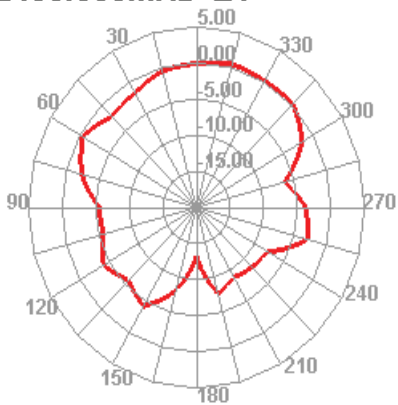
2480.000MHz



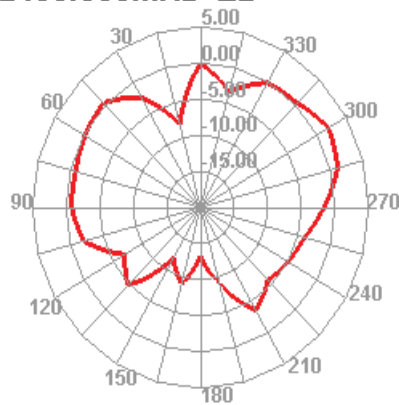
2480.000MHz H



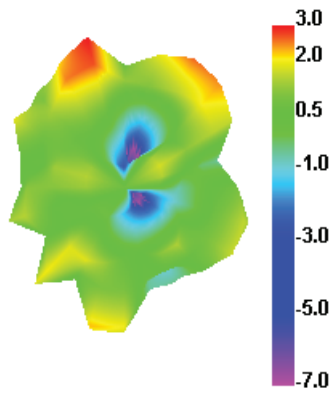
2480.000MHz E1



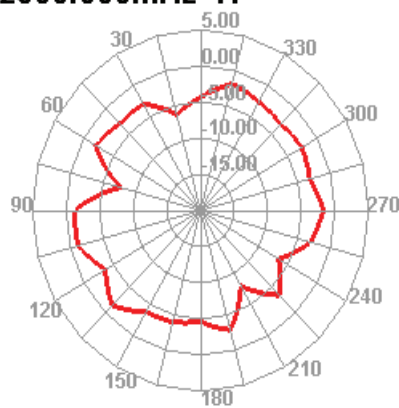
2480.000MHz E2



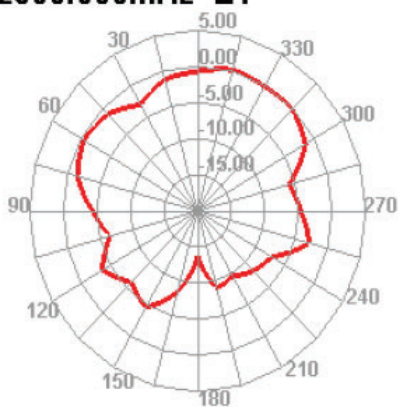
2500.000MHz



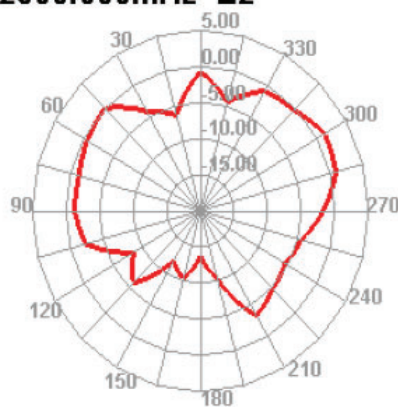
2500.000MHz H



2500.000MHz E1

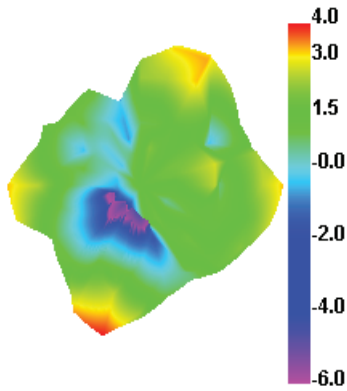


2500.000MHz E2

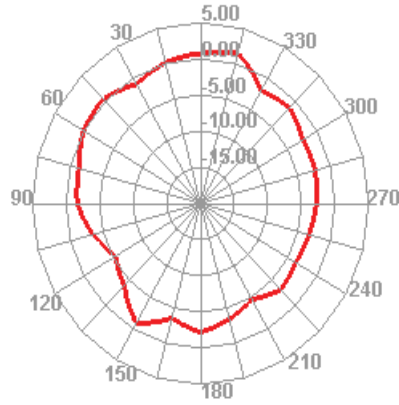




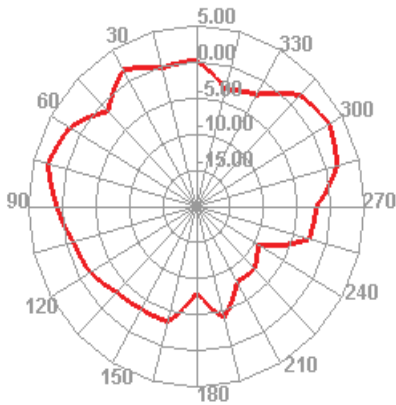
2400.000MHz



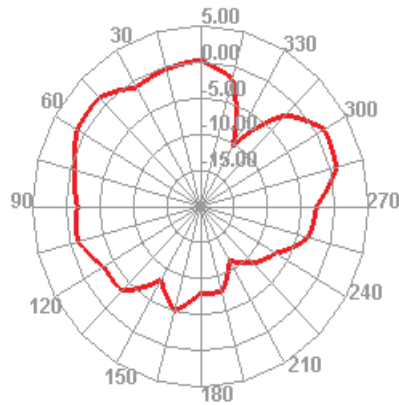
2400.000MHz H



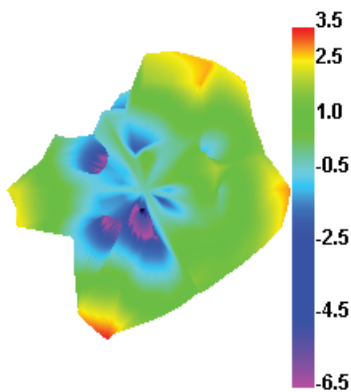
2400.000MHz E1



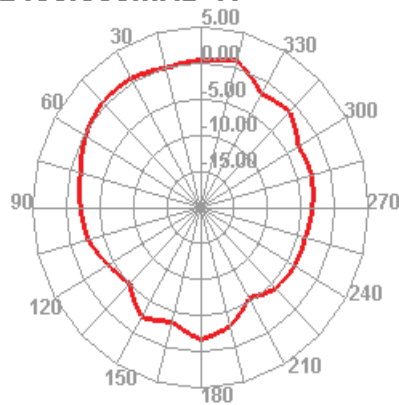
2400.000MHz E2



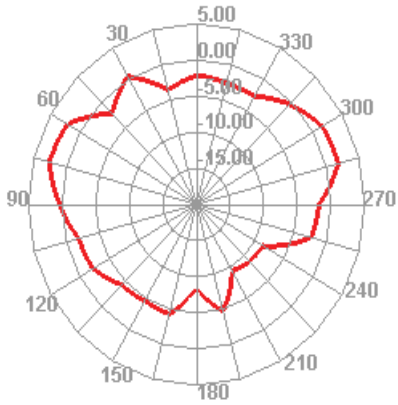
2430.000MHz



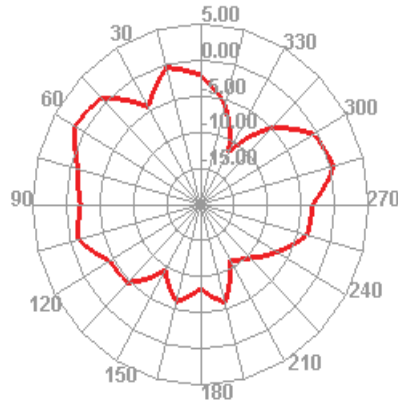
2430.000MHz H



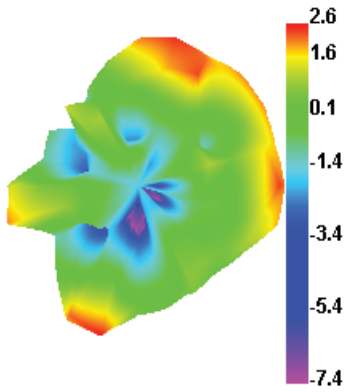
2430.000MHz E1



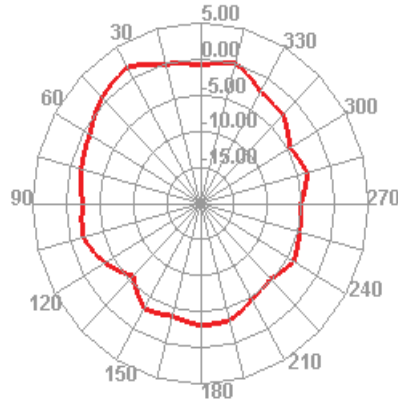
2430.000MHz E2



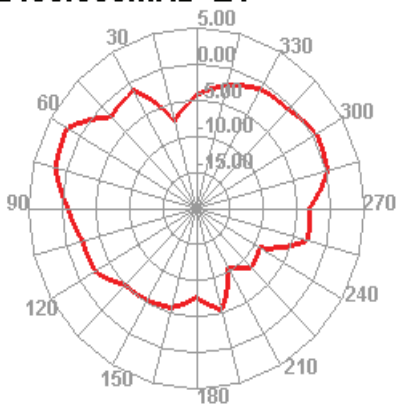
2450.000MHz



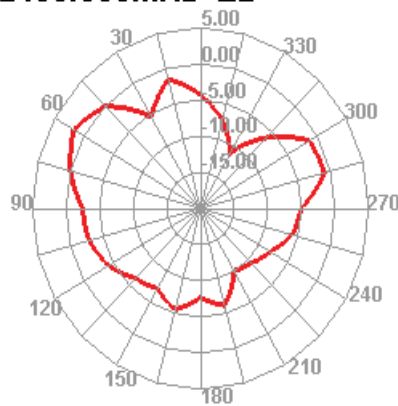
2450.000MHz H



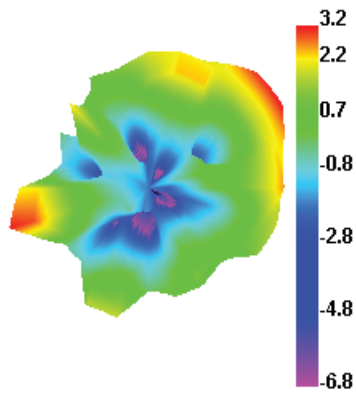
2450.000MHz E1



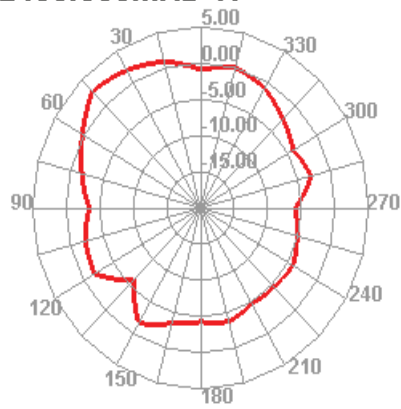
2450.000MHz E2



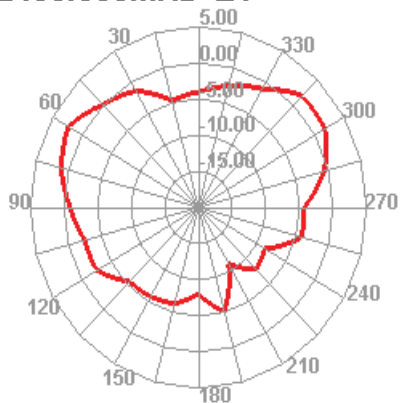
2480.000MHz



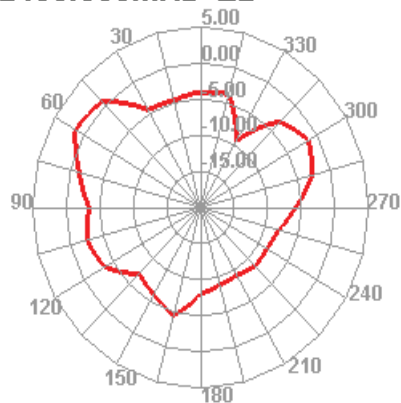
2480.000MHz H



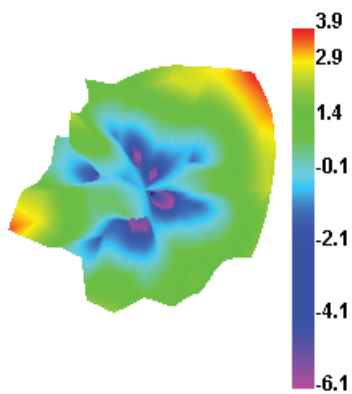
2480.000MHz E1



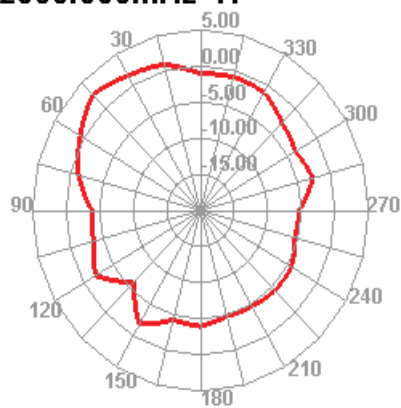
2480.000MHz E2



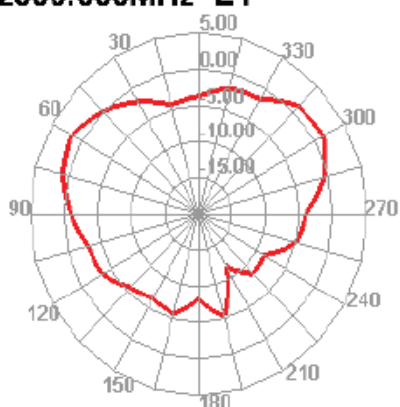
2500.000MHz



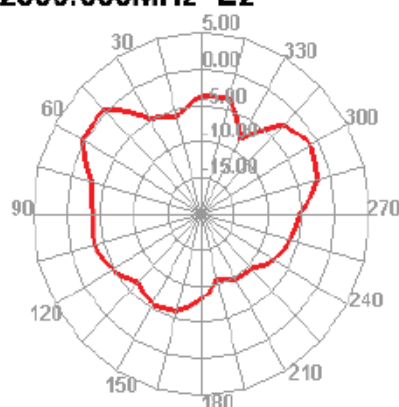
2500.000MHz H



2500.000MHz E1

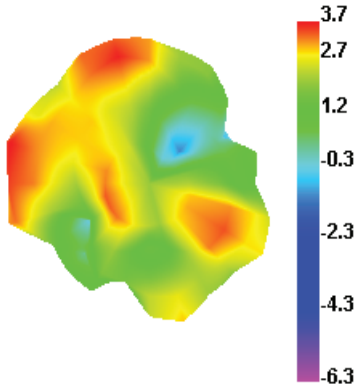


2500.000MHz E2

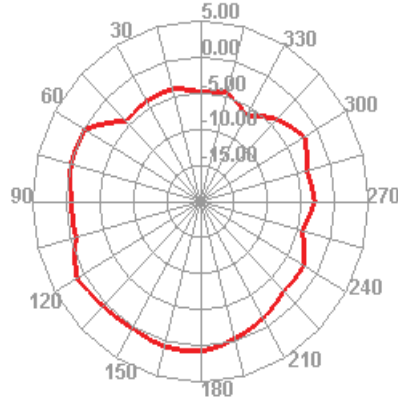




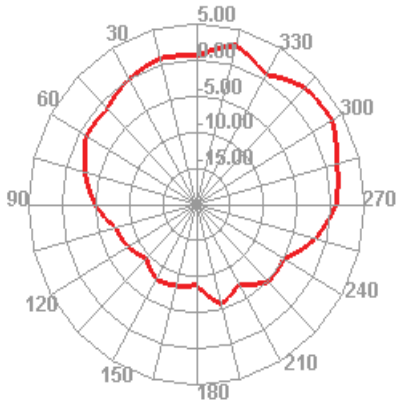
2400.000MHz



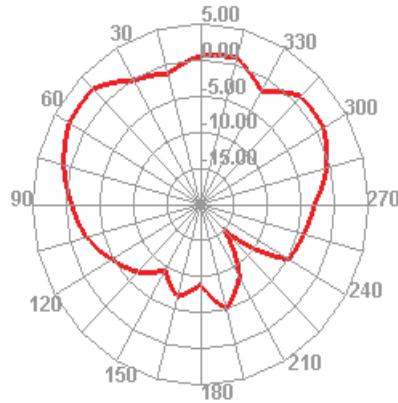
2400.000MHz H



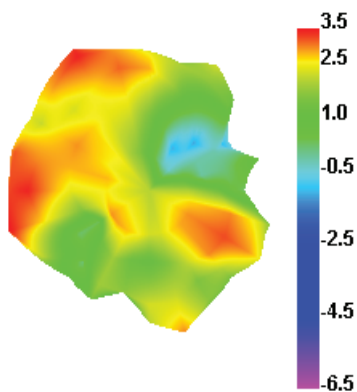
2400.000MHz E1



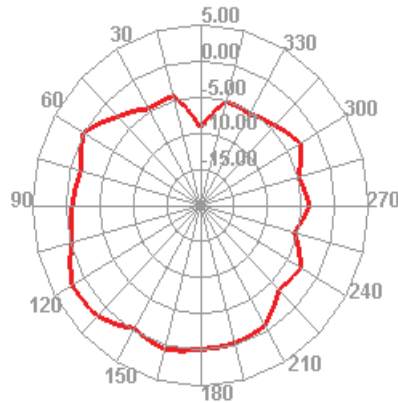
2400.000MHz E2



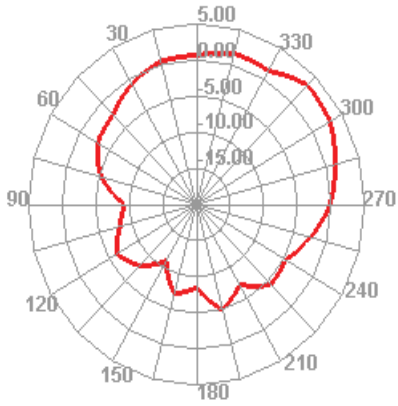
2430.000MHz



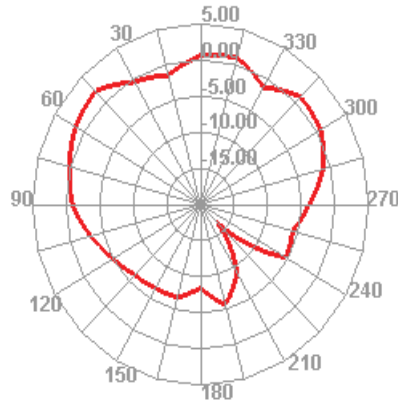
2430.000MHz H



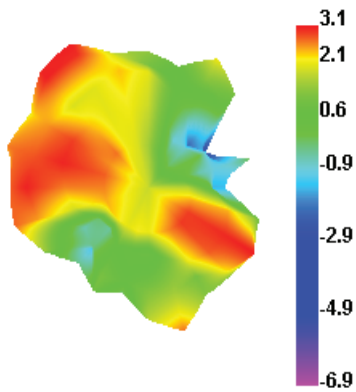
2430.000MHz E1



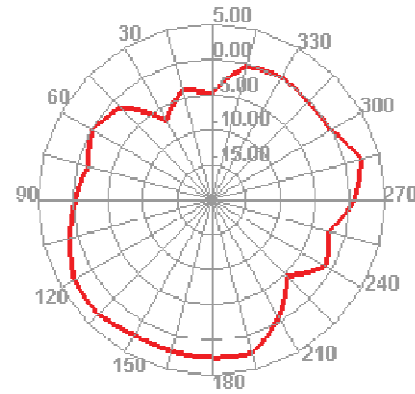
2430.000MHz E2



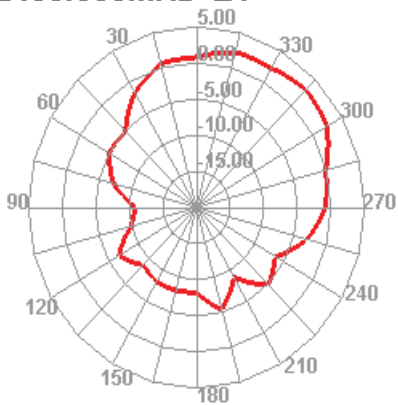
2450.000MHz



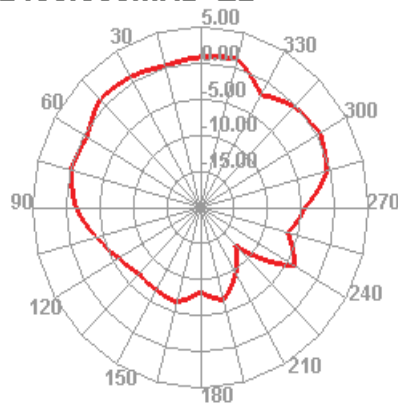
2450.000MHz H



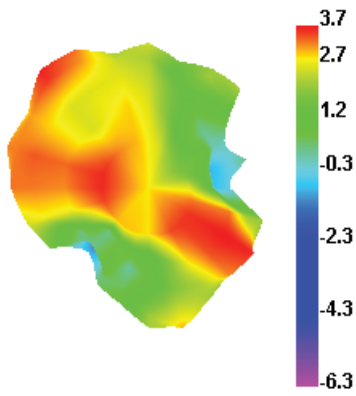
2450.000MHz E1



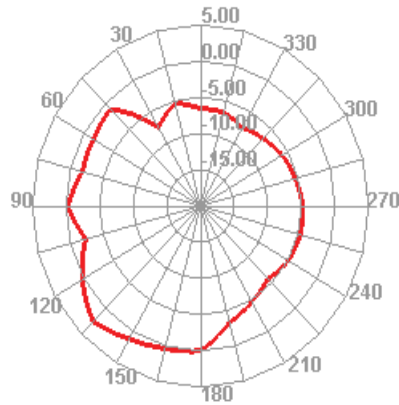
2450.000MHz E2



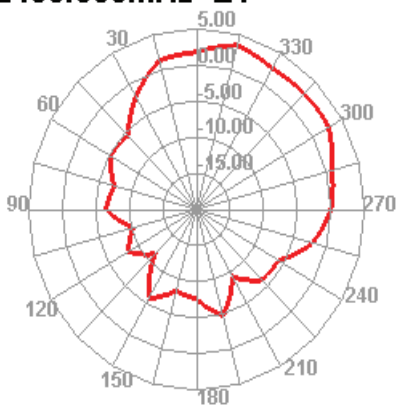
2480.000MHz



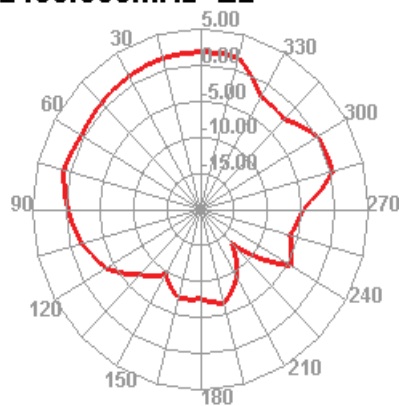
2480.000MHz H



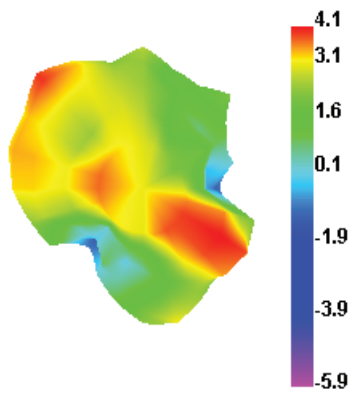
2480.000MHz E1



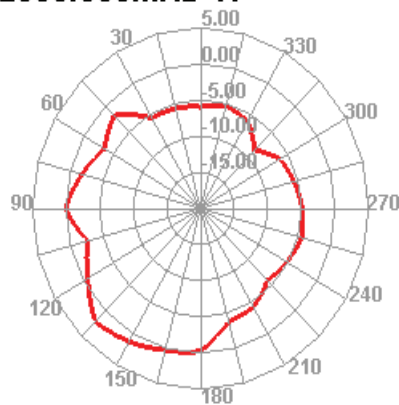
2480.000MHz E2



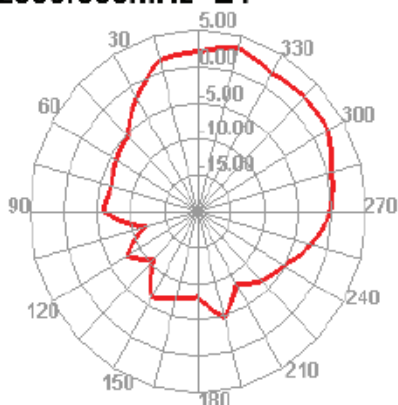
2500.000MHz



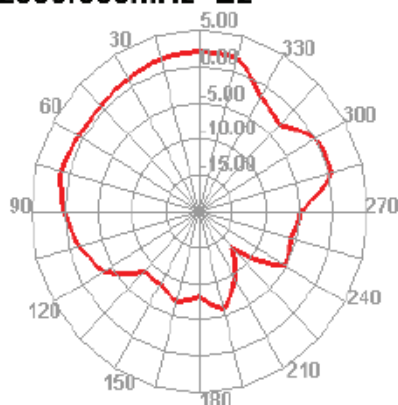
2500.000MHz H



2500.000MHz E1

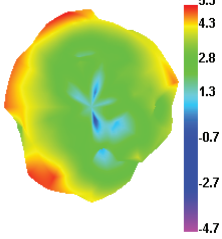


2500.000MHz E2

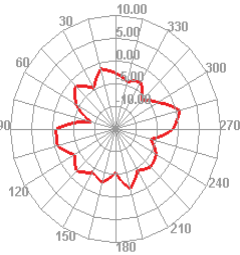




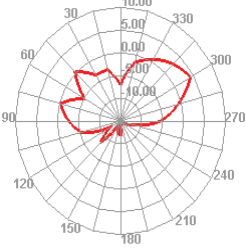
5150.000MHz



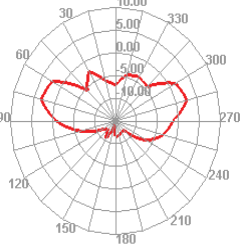
5150.000MHz H



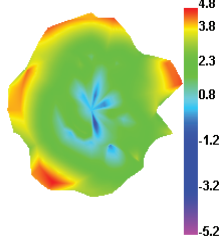
5150.000MHz E1



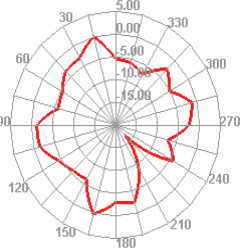
5150.000MHz E2



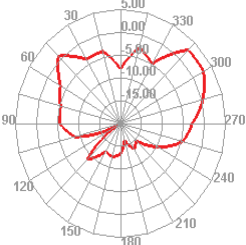
5250.000MHz



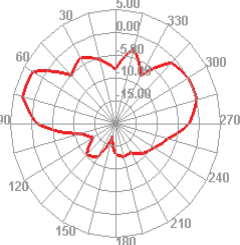
5250.000MHz H



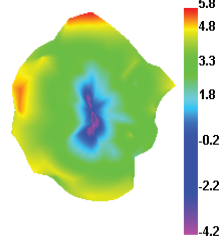
5250.000MHz E1



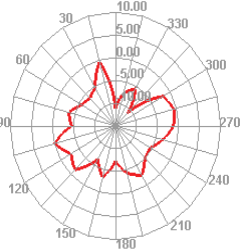
5250.000MHz E2



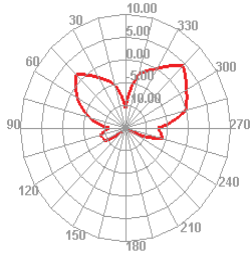
5350.000MHz



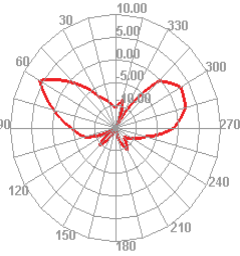
5350.000MHz H



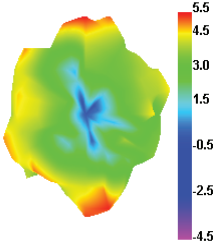
5350.000MHz E1



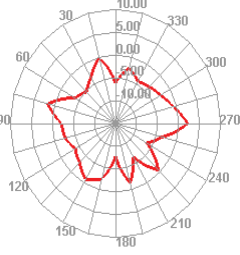
5350.000MHz E2



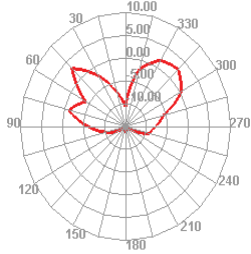
5450.000MHz



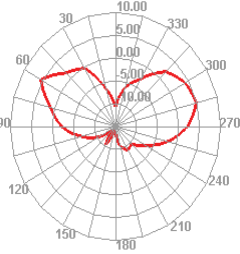
5450.000MHz H



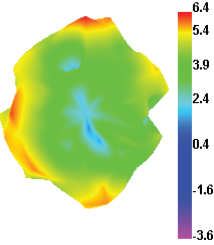
5450.000MHz E1



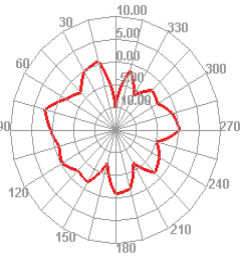
5450.000MHz E2



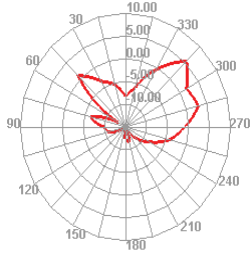
5500.000MHz



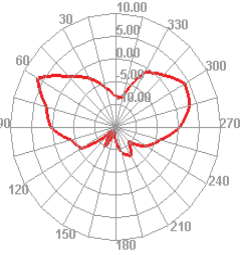
5500.000MHz H



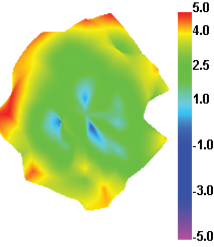
5500.000MHz E1



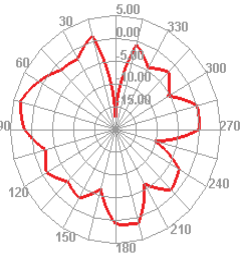
5500.000MHz E2



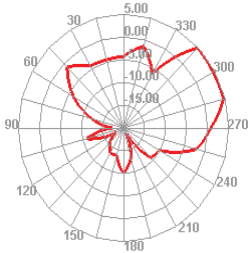
5550.000MHz



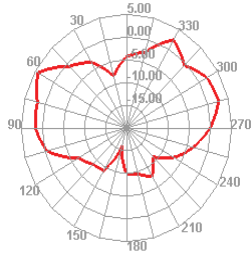
5550.000MHz H



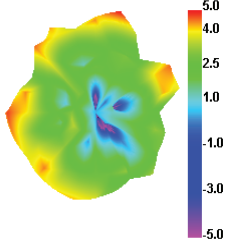
5550.000MHz E1



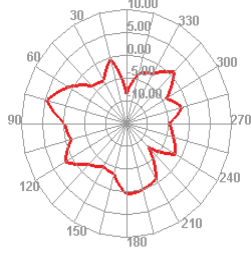
5550.000MHz E2



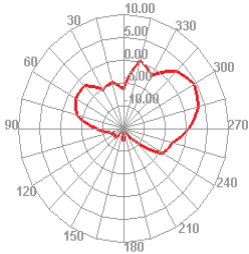
5650.000MHz



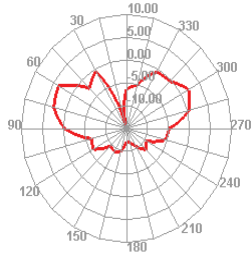
5650.000MHz H



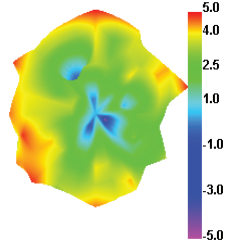
5650.000MHz E1



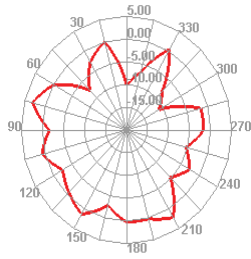
5650.000MHz E2



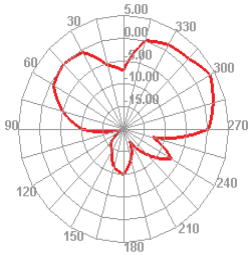
5750.000MHz



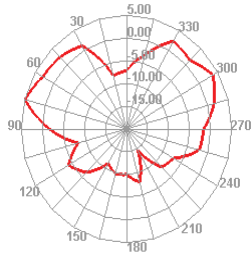
5750.000MHz H



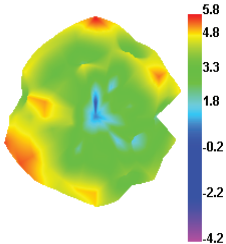
5750.000MHz E1



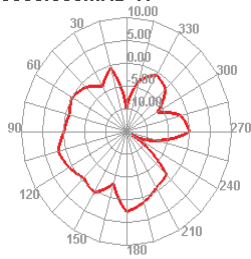
5750.000MHz E2



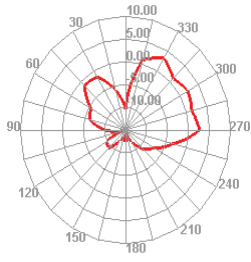
5850.000MHz



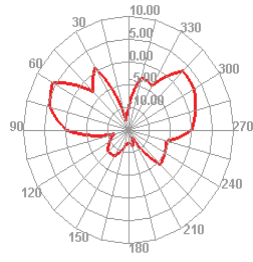
5850.000MHz H



5850.000MHz E1

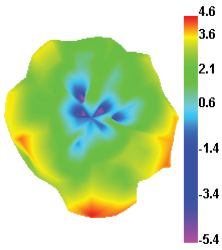


5850.000MHz E2

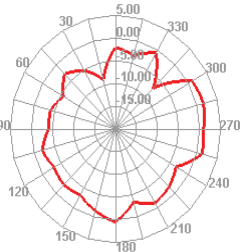




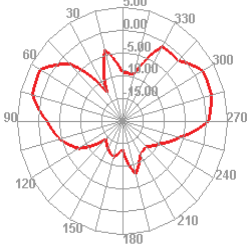
5150.000MHz



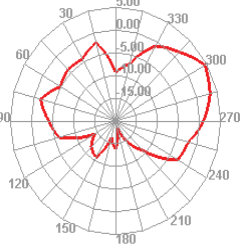
5150.000MHz H



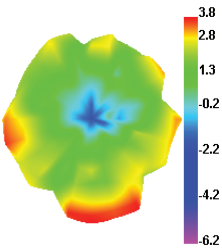
5150.000MHz E1



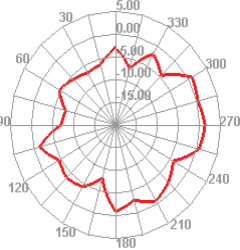
5150.000MHz E2



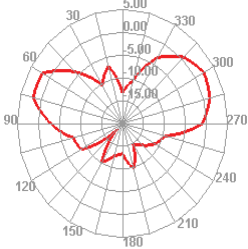
5250.000MHz



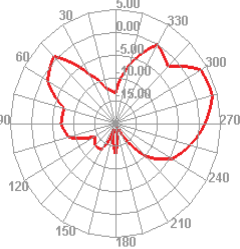
5250.000MHz H



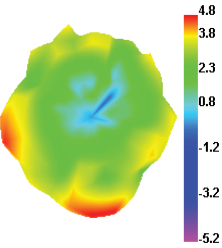
5250.000MHz E1



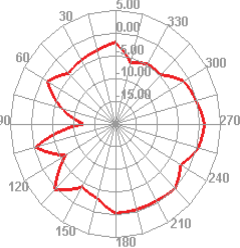
5250.000MHz E2



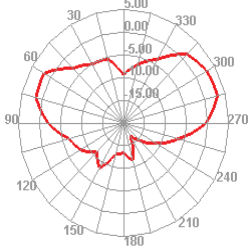
5350.000MHz



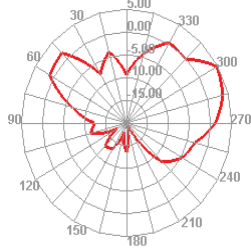
5350.000MHz H



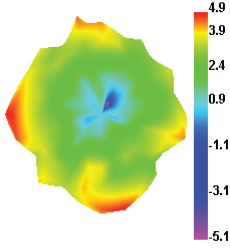
5350.000MHz E1



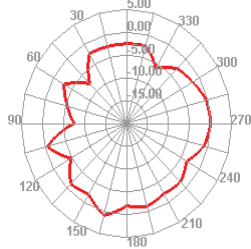
5350.000MHz E2



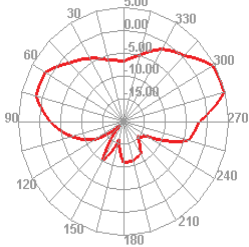
5450.000MHz



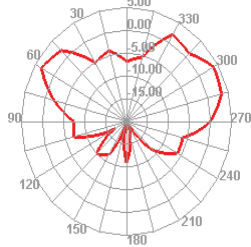
5450.000MHz H



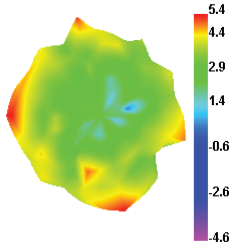
5450.000MHz E1



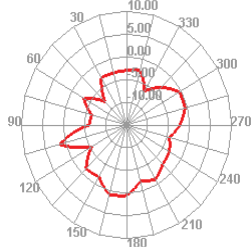
5450.000MHz E2



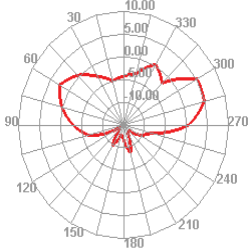
5500.000MHz



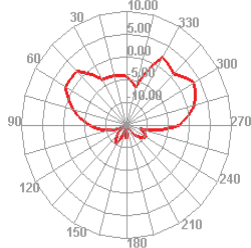
5500.000MHz H



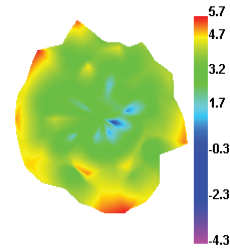
5500.000MHz E1



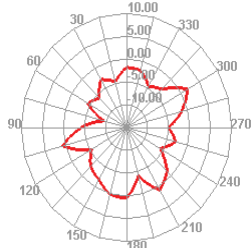
5500.000MHz E2



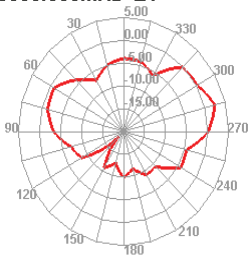
5550.000MHz



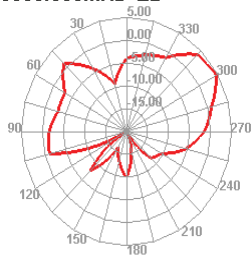
5550.000MHz H



5850.000MHz E1

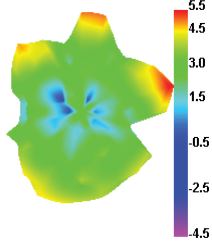


5850.000MHz E2

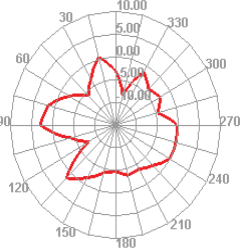




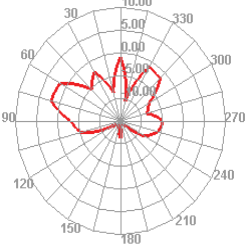
5150.000MHz



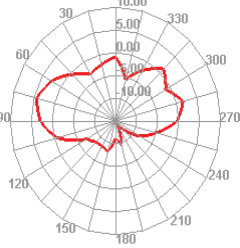
5150.000MHz H



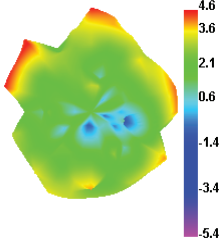
5150.000MHz E1



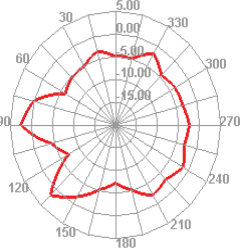
5150.000MHz E2



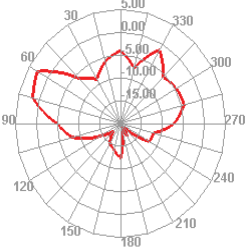
5250.000MHz



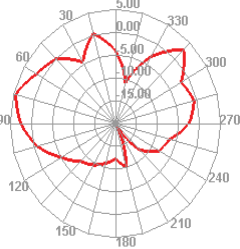
5250.000MHz H



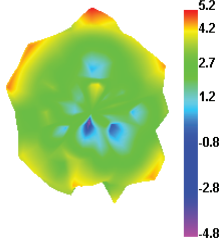
5250.000MHz E1



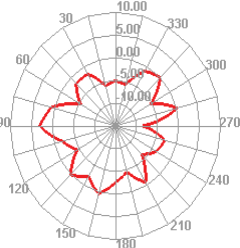
5250.000MHz E2



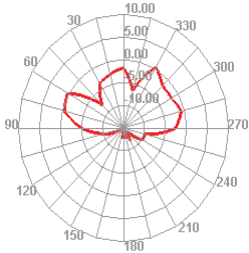
5350.000MHz



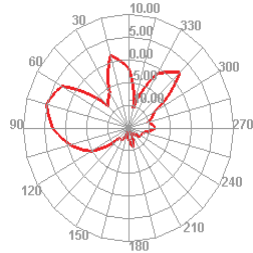
5350.000MHz H



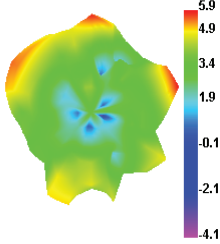
5350.000MHz E1



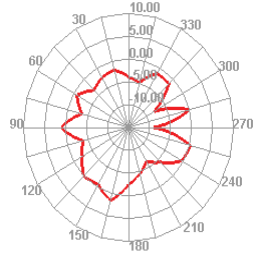
5350.000MHz E2



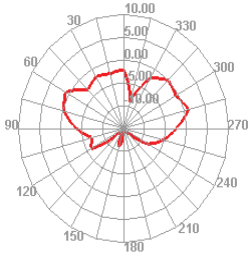
5450.000MHz



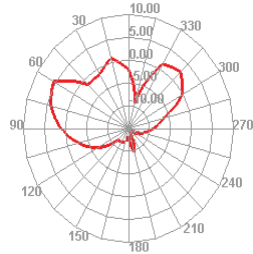
5450.000MHz H



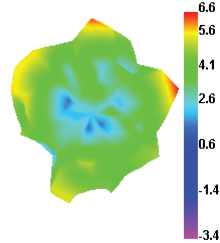
5450.000MHz E1



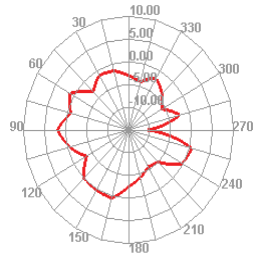
5450.000MHz E2



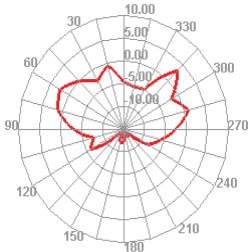
5500.000MHz



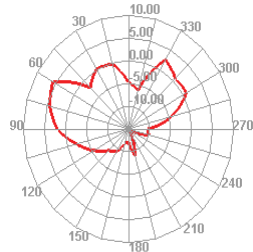
5500.000MHz H



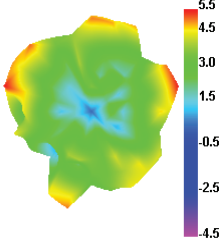
5500.000MHz E1



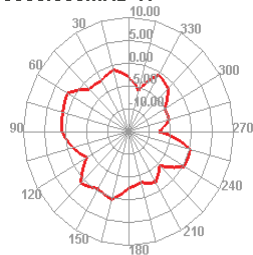
5500.000MHz E2



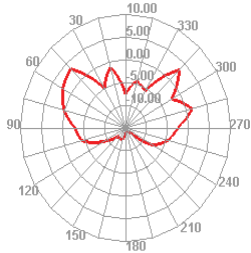
5550.000MHz



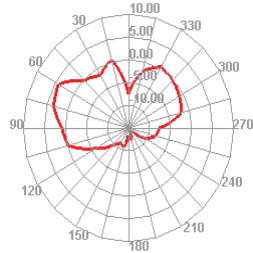
5550.000MHz H



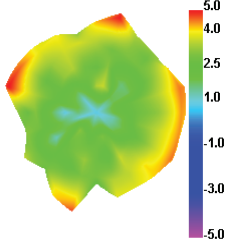
5550.000MHz E1



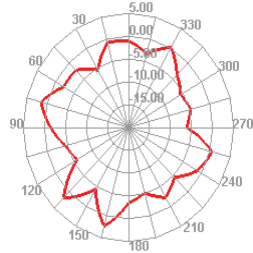
5550.000MHz E2



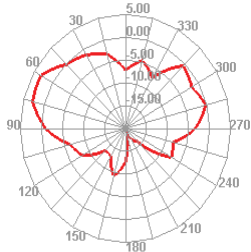
5650.000MHz



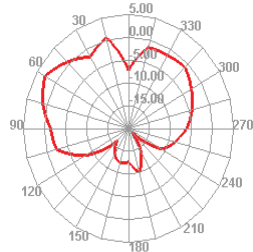
5650.000MHz H



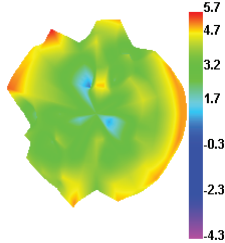
5650.000MHz E1



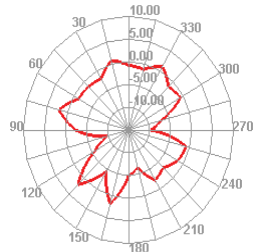
5650.000MHz E2



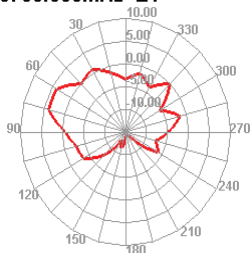
5750.000MHz



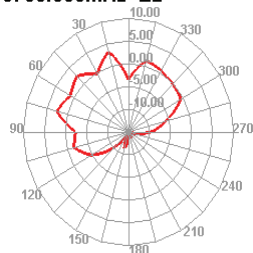
5750.000MHz H



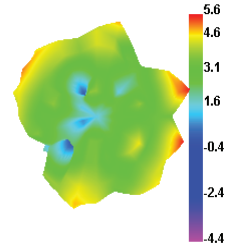
5750.000MHz E1



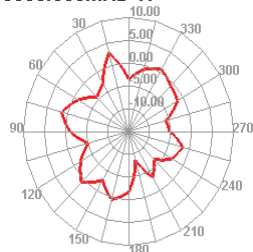
5750.000MHz E2



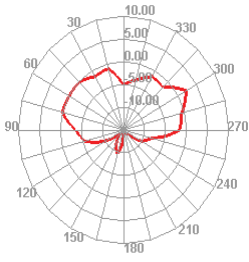
5850.000MHz



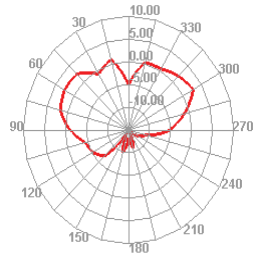
5850.000MHz H



5850.000MHz E1

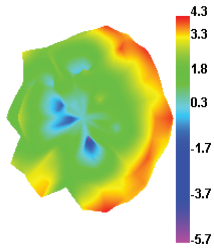


5850.000MHz E2

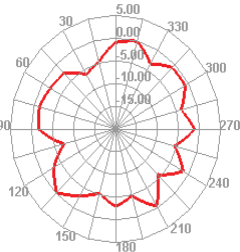




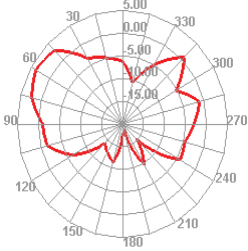
5150.000MHz



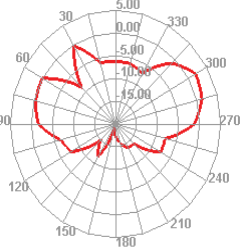
5150.000MHz H



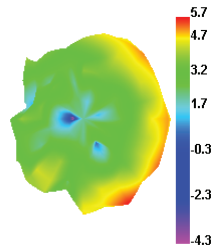
5150.000MHz E1



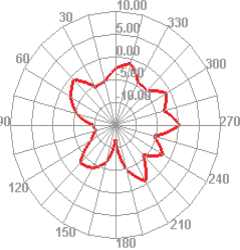
5150.000MHz E2



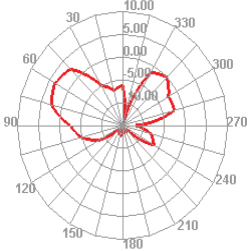
5250.000MHz



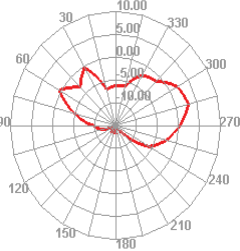
5250.000MHz H



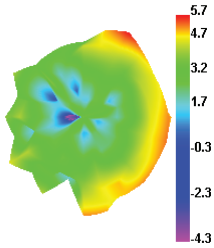
5250.000MHz E1



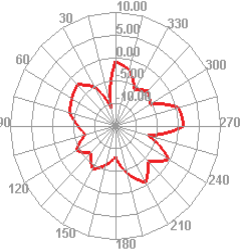
5250.000MHz E2



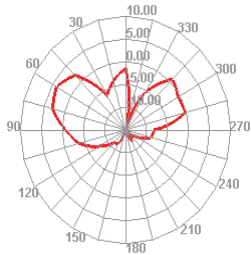
5350.000MHz



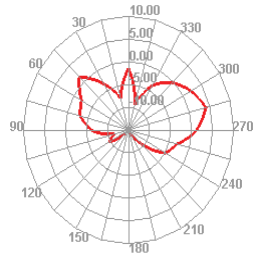
5350.000MHz H



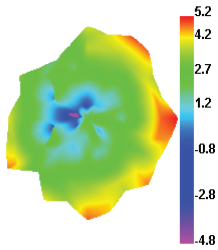
5350.000MHz E1



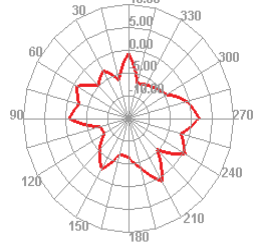
5350.000MHz E2



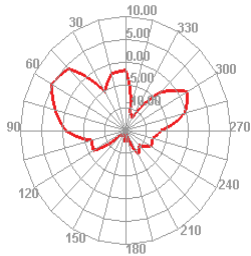
5450.000MHz



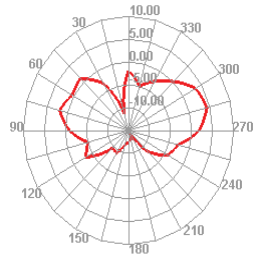
5450.000MHz H



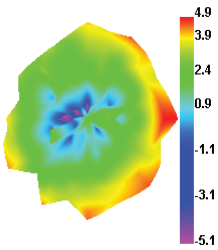
5450.000MHz E1



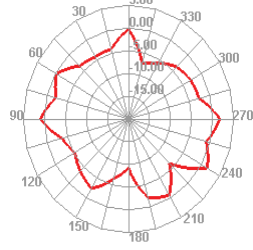
5450.000MHz E2



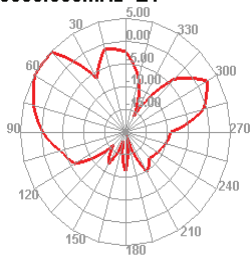
5500.000MHz



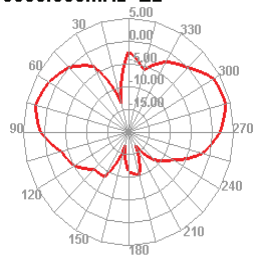
5500.000MHz H



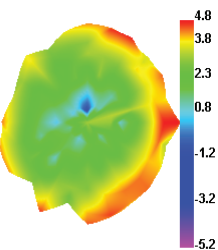
5500.000MHz E1



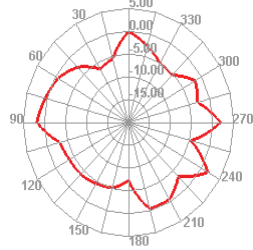
5500.000MHz E2



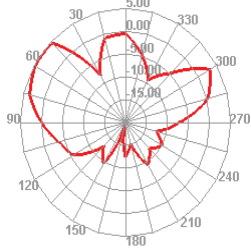
5550.000MHz



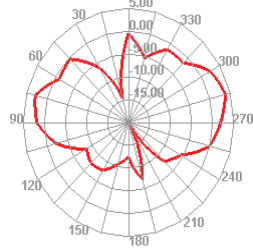
5550.000MHz H



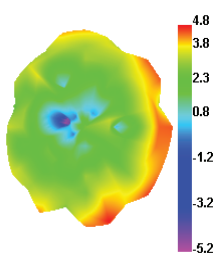
5550.000MHz E1



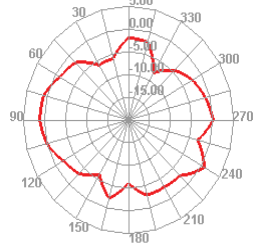
5550.000MHz E2



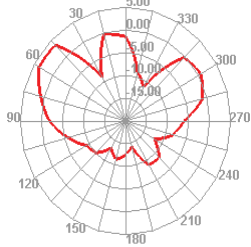
5650.000MHz



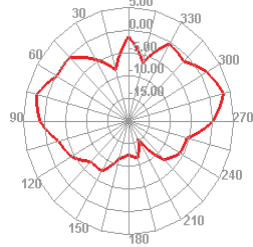
5650.000MHz H



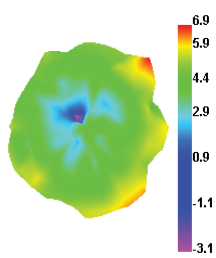
5650.000MHz E1



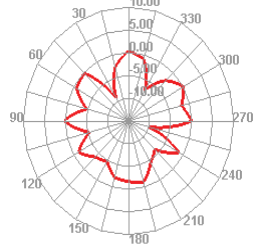
5650.000MHz E2



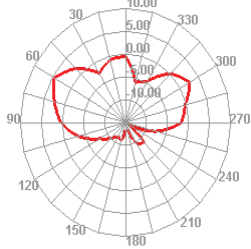
5750.000MHz



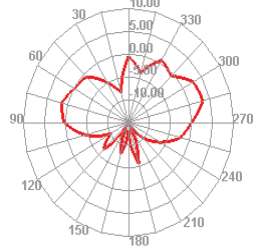
5750.000MHz H



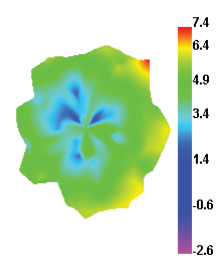
5750.000MHz E1



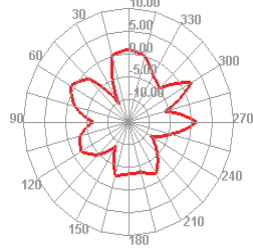
5750.000MHz E2



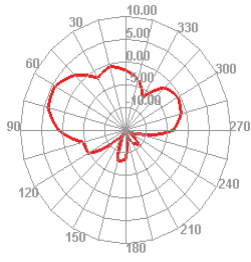
5850.000MHz



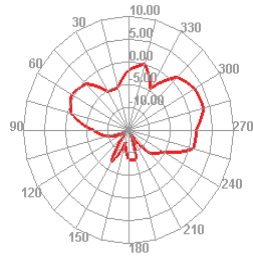
5850.000MHz H



5850.000MHz E1

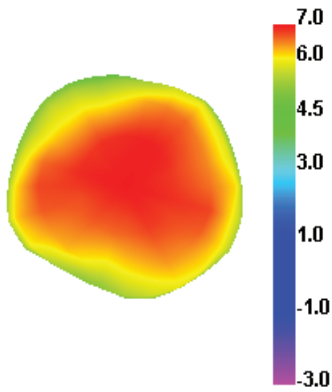


5850.000MHz E2

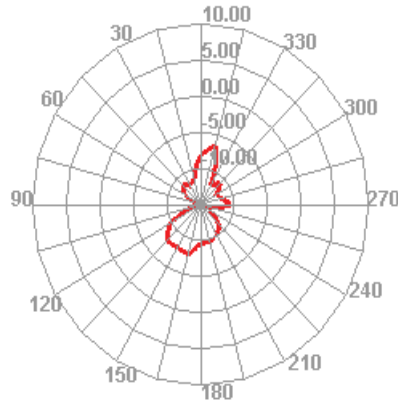




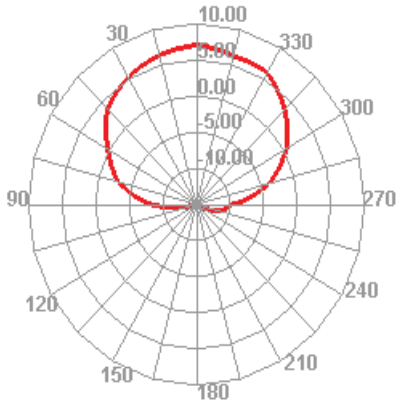
2400.000MHz



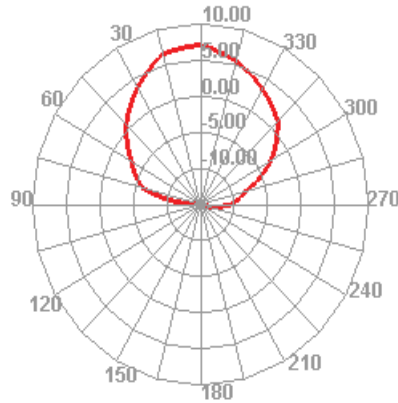
2400.000MHz H



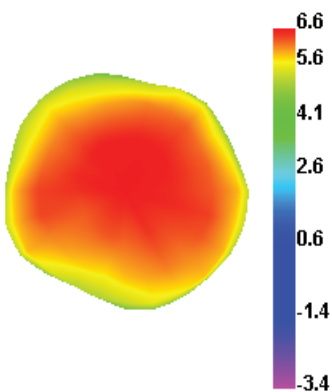
2400.000MHz E1



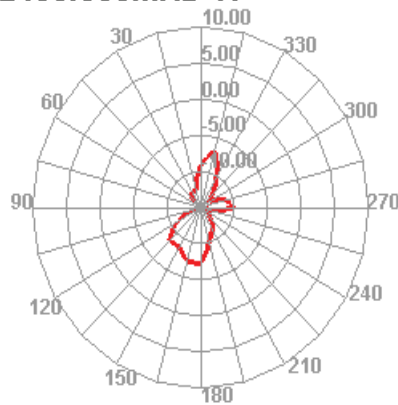
2400.000MHz E2



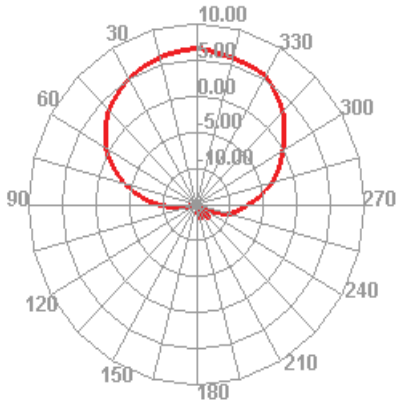
2430.000MHz



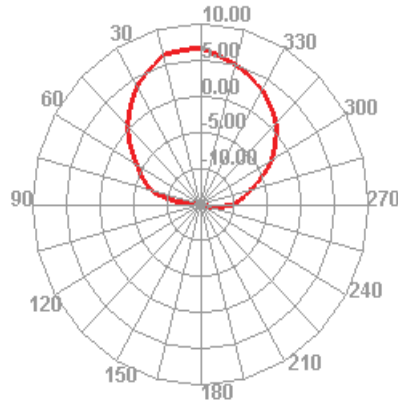
2430.000MHz H



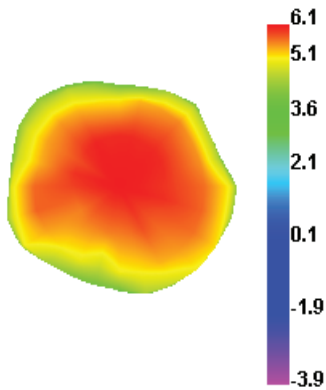
2430.000MHz E1



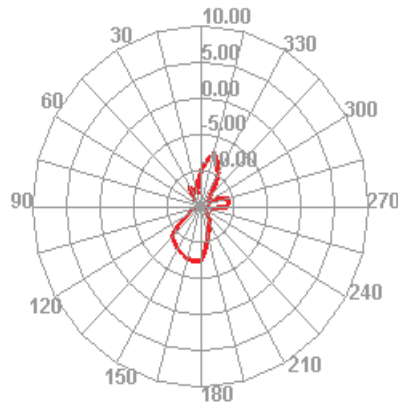
2430.000MHz E2



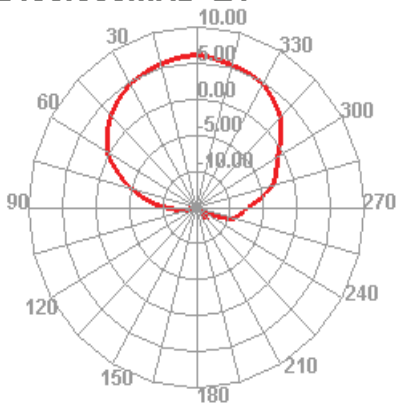
2450.000MHz



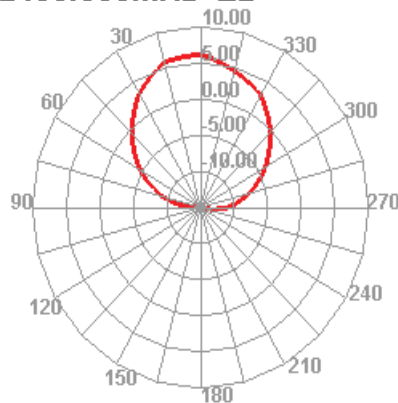
2450.000MHz H



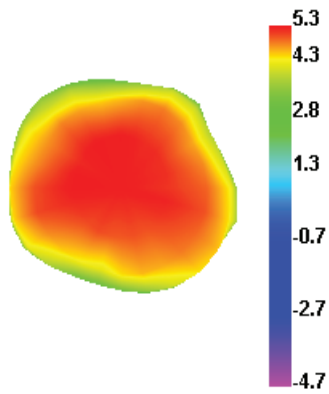
2450.000MHz E1



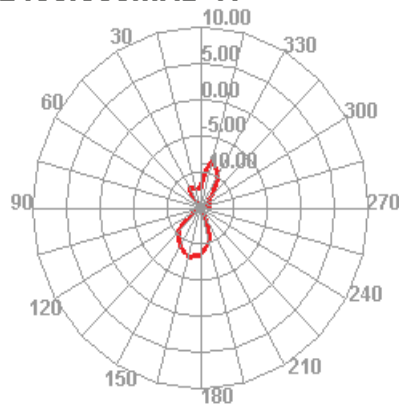
2450.000MHz E2



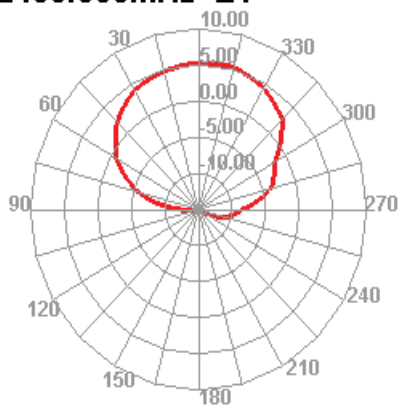
2480.000MHz



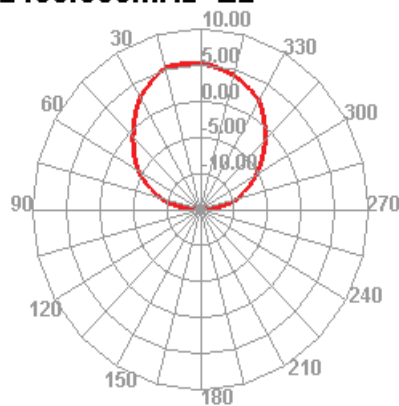
2480.000MHz H



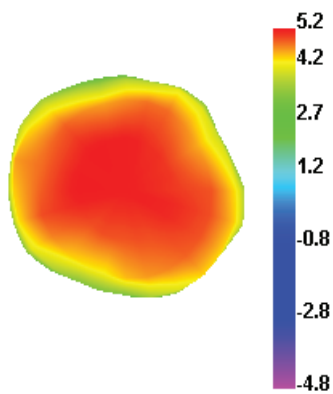
2480.000MHz E1



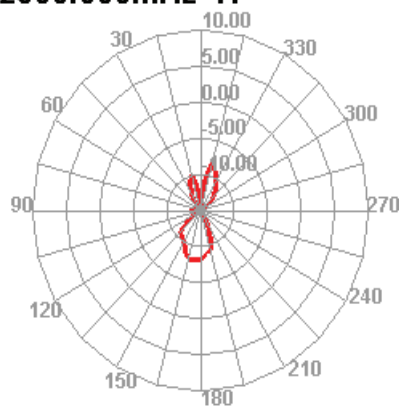
2480.000MHz E2



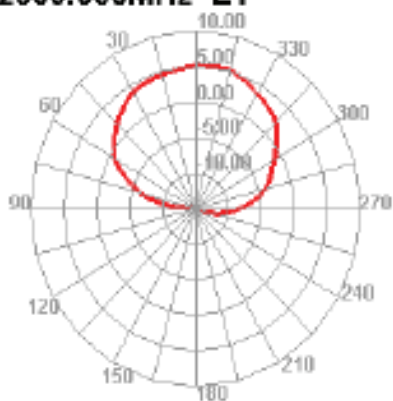
2500.000MHz



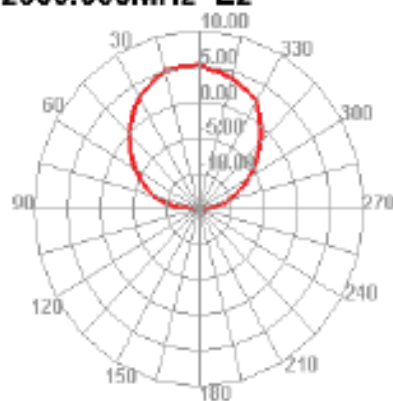
2500.000MHz H



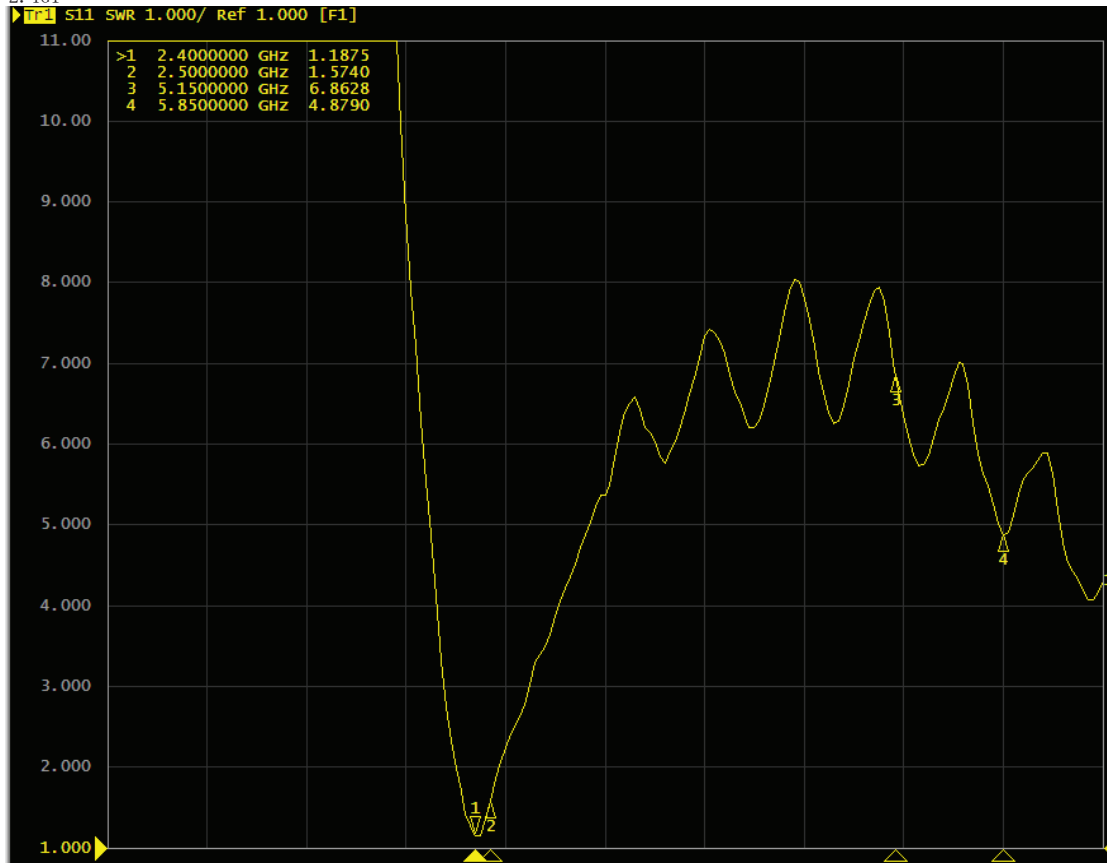
2500.000MHz E1



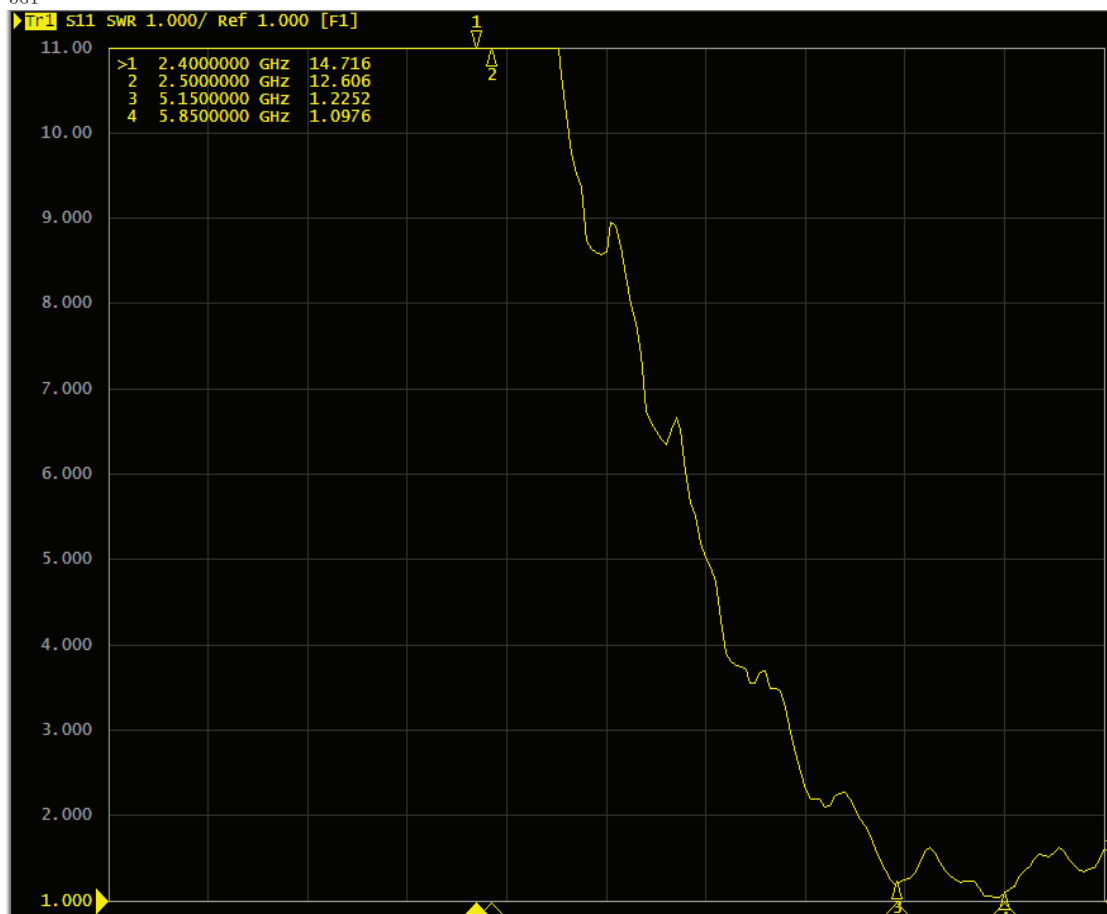
2500.000MHz E2



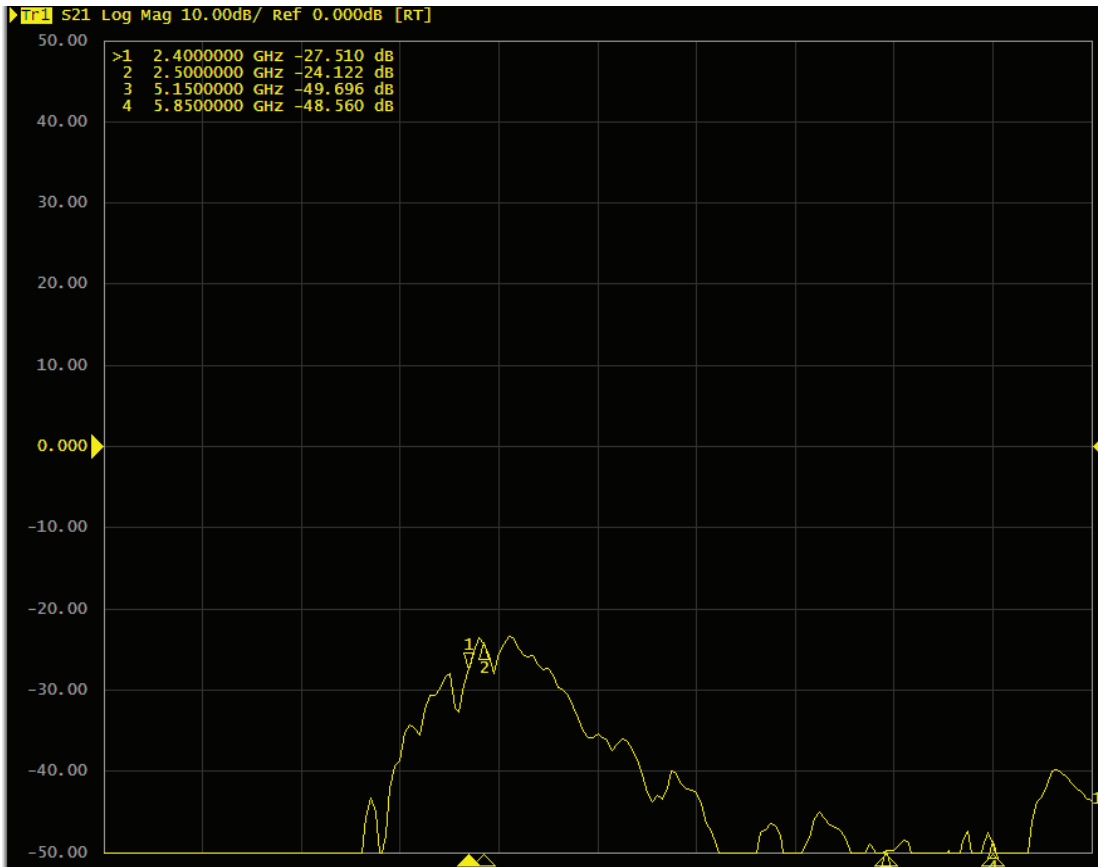
2.4G1



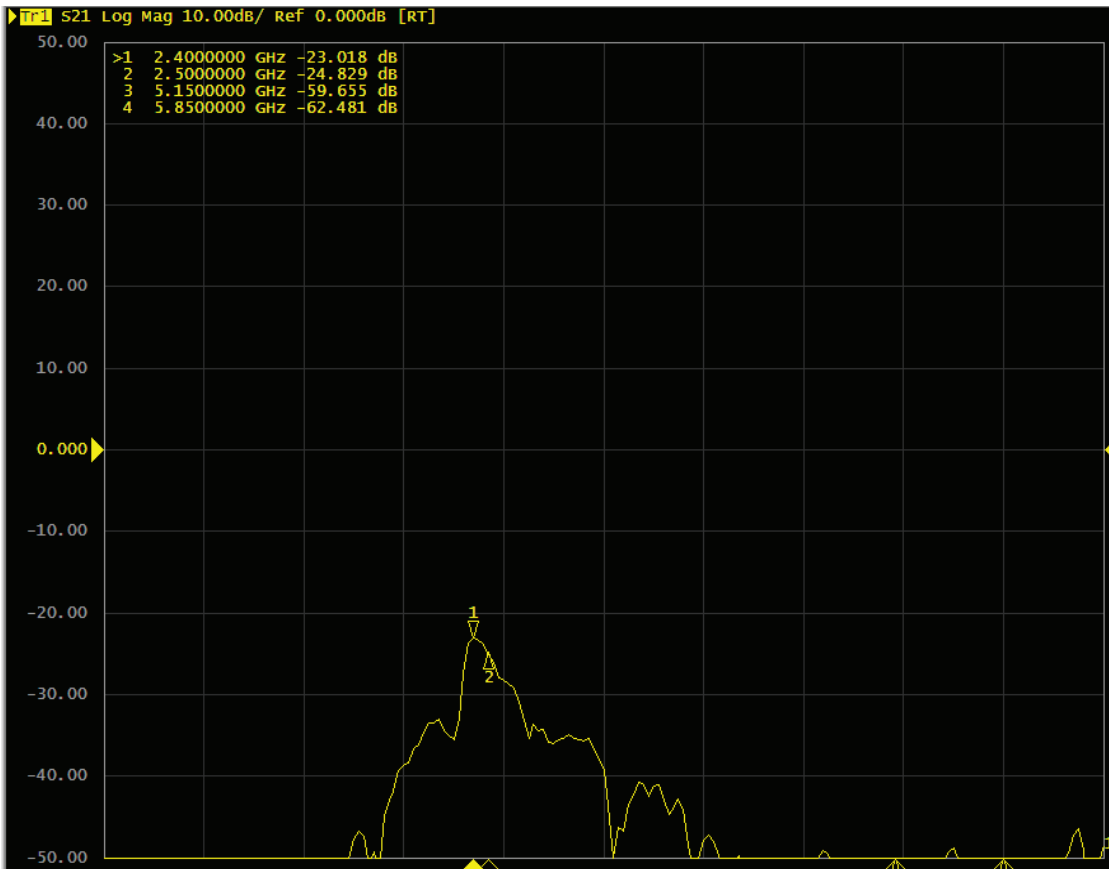
5G1



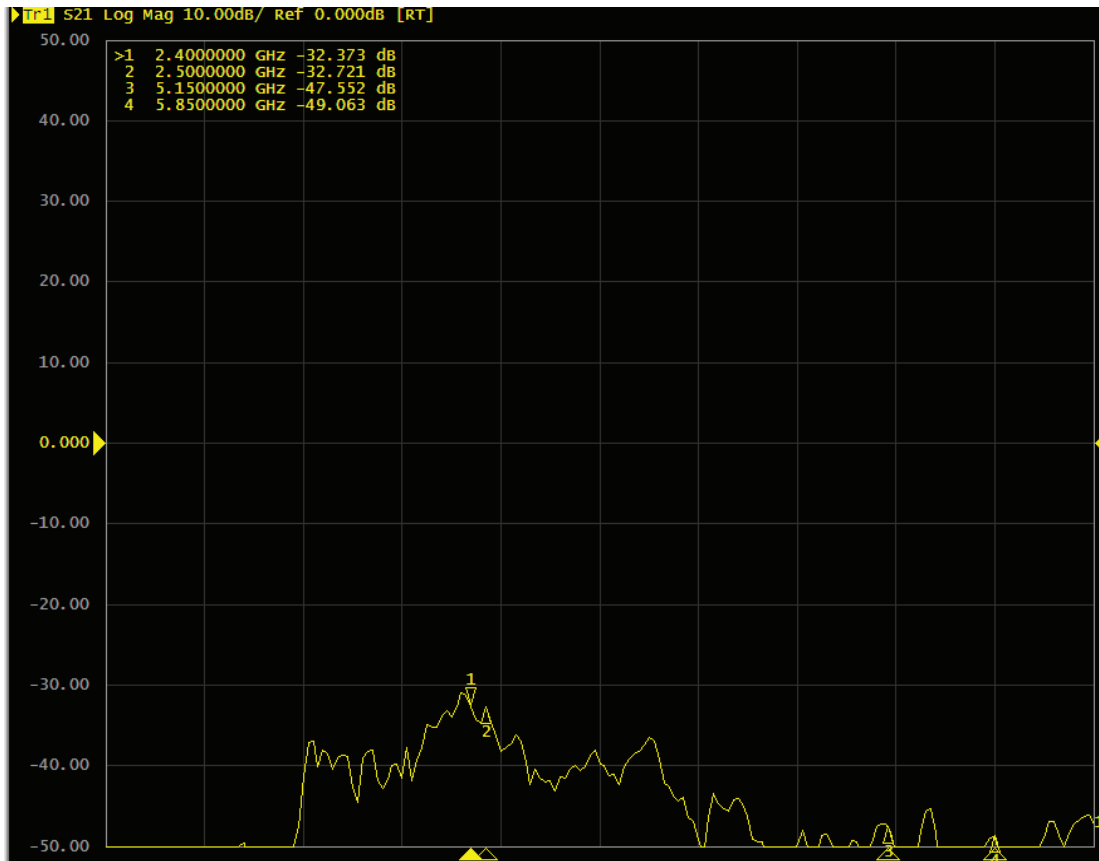
2. 4G1&2



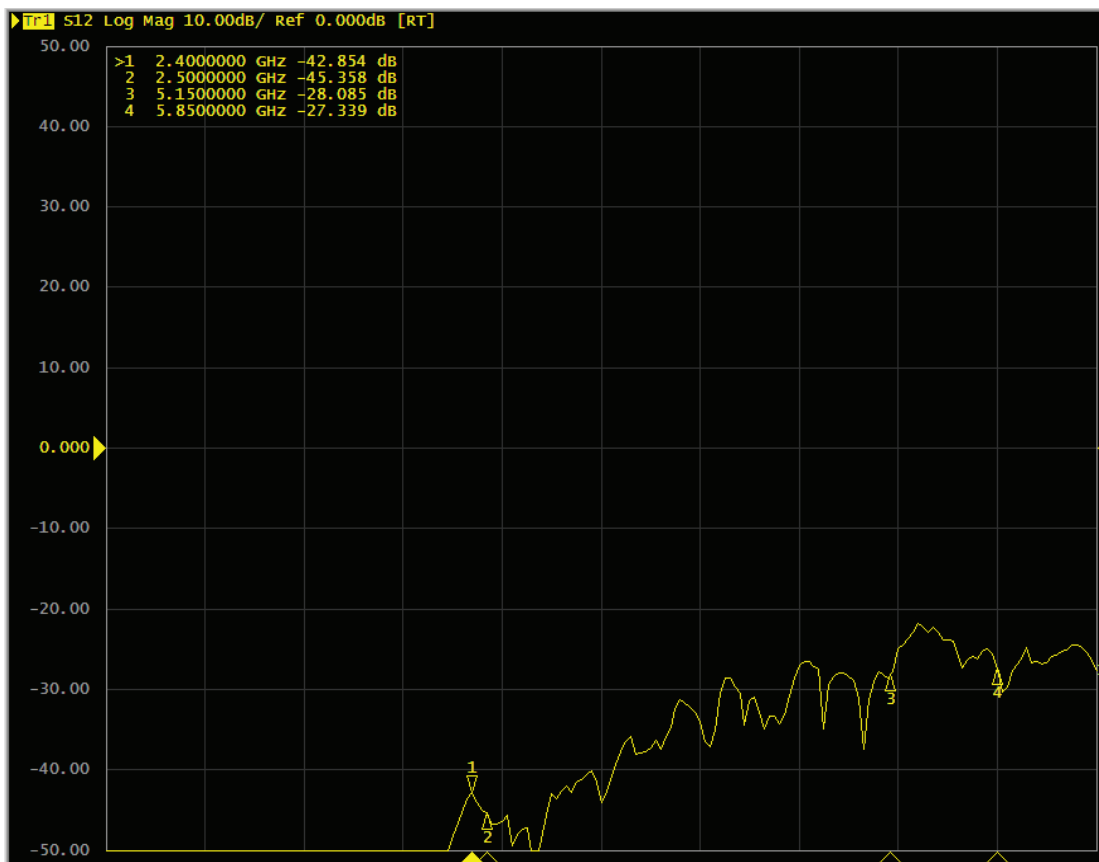
2. 4G2&4



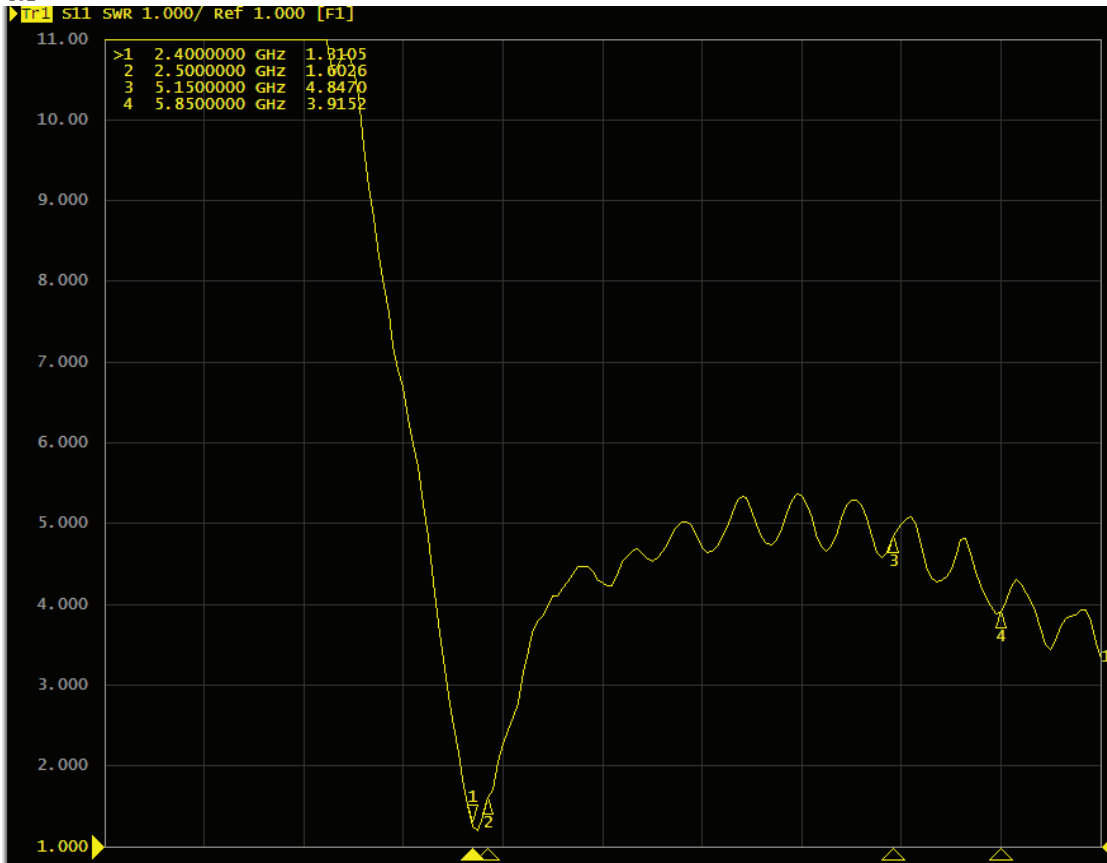
BT&2. 4G3



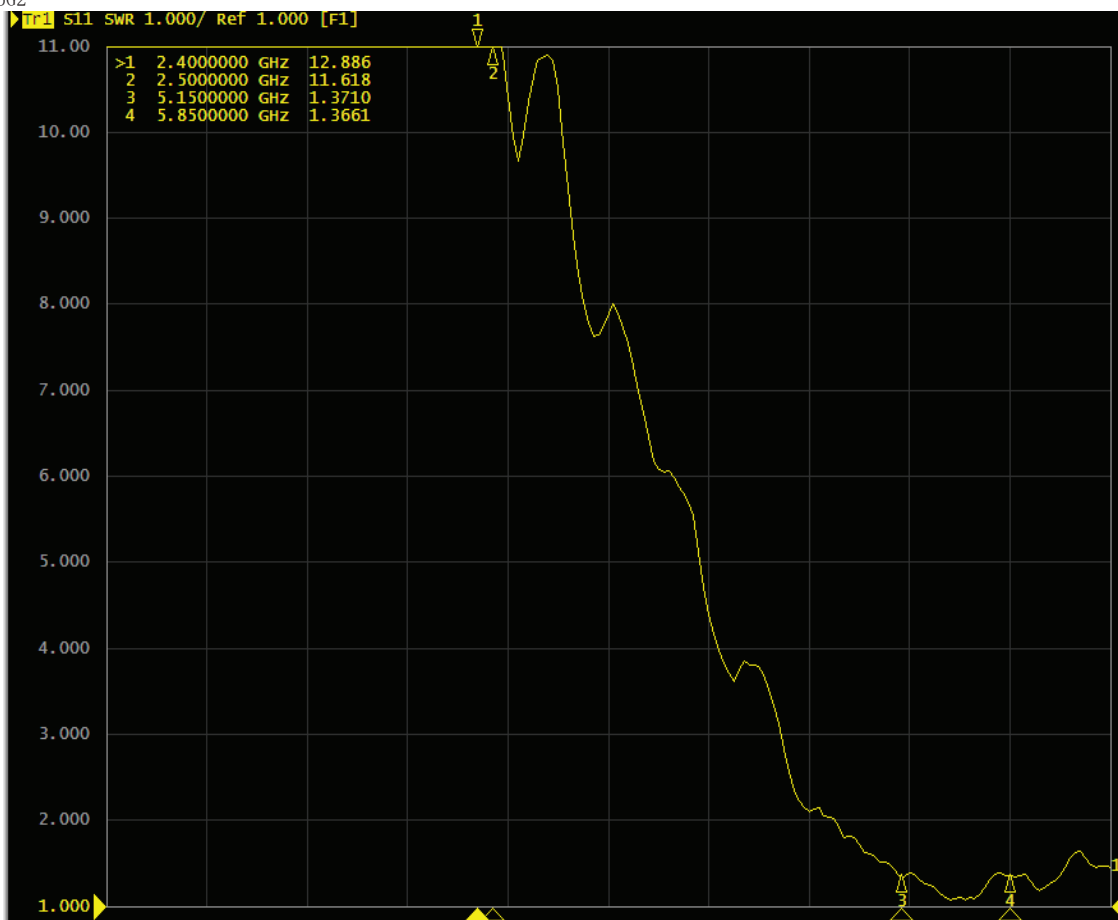
5G1&4



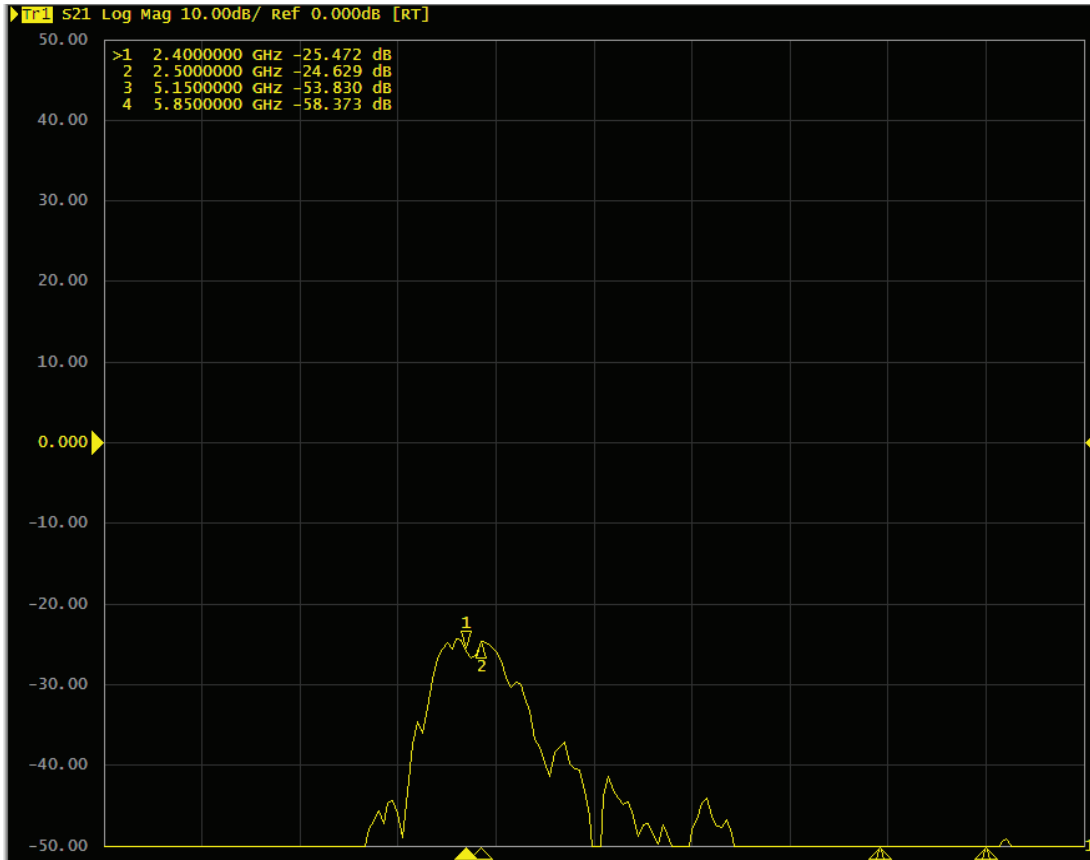
2.4G2



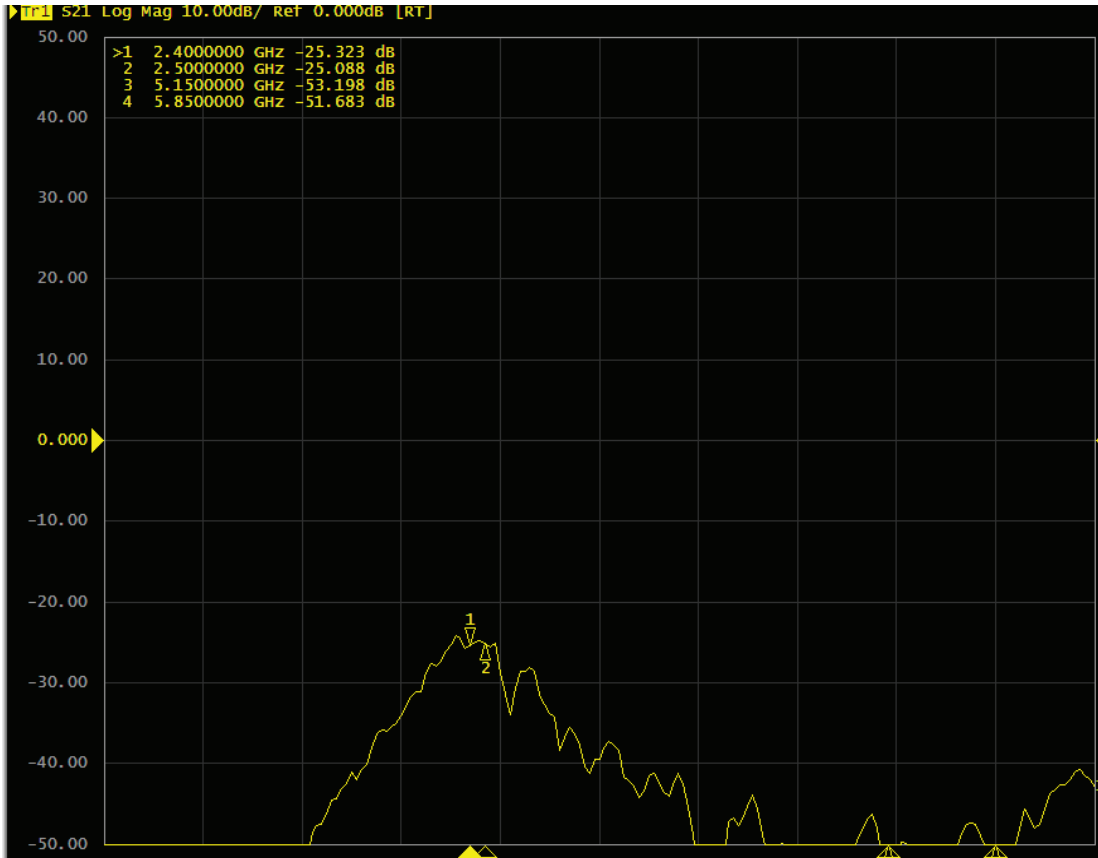
5G2



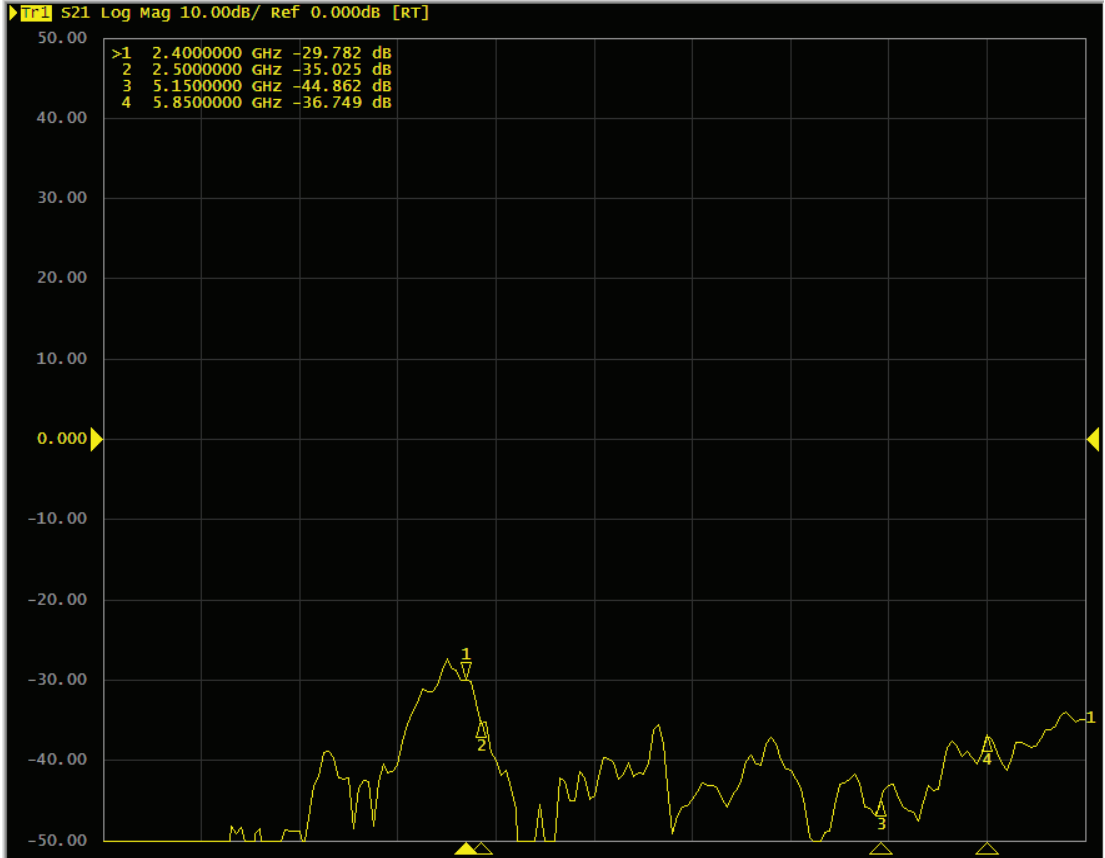
2. 4G1&3



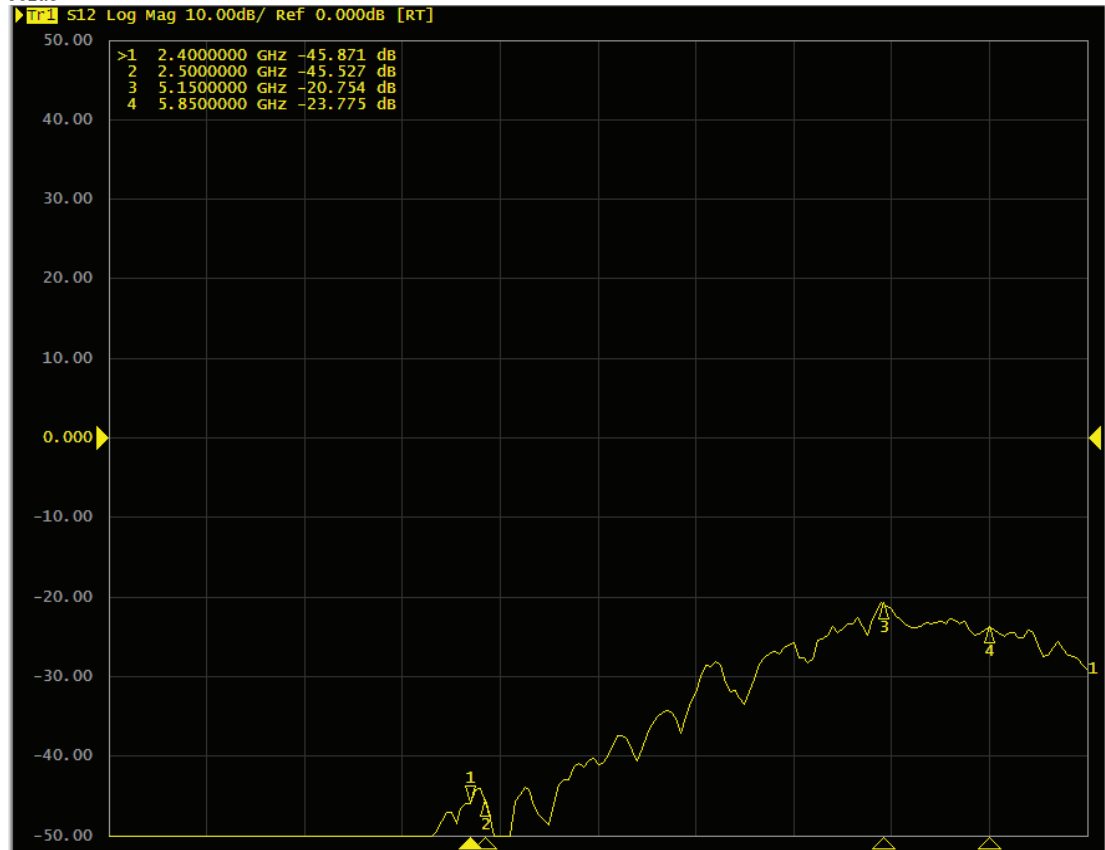
2. 4G3&4



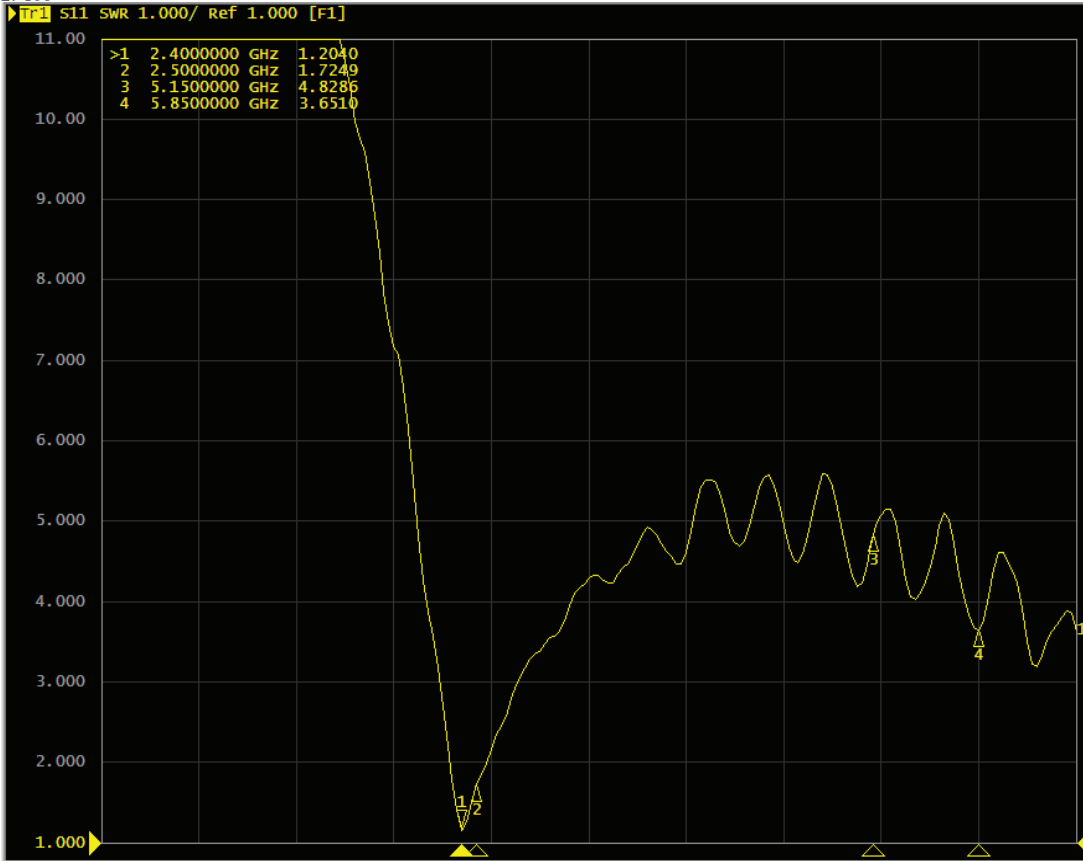
BT&2. 4G4



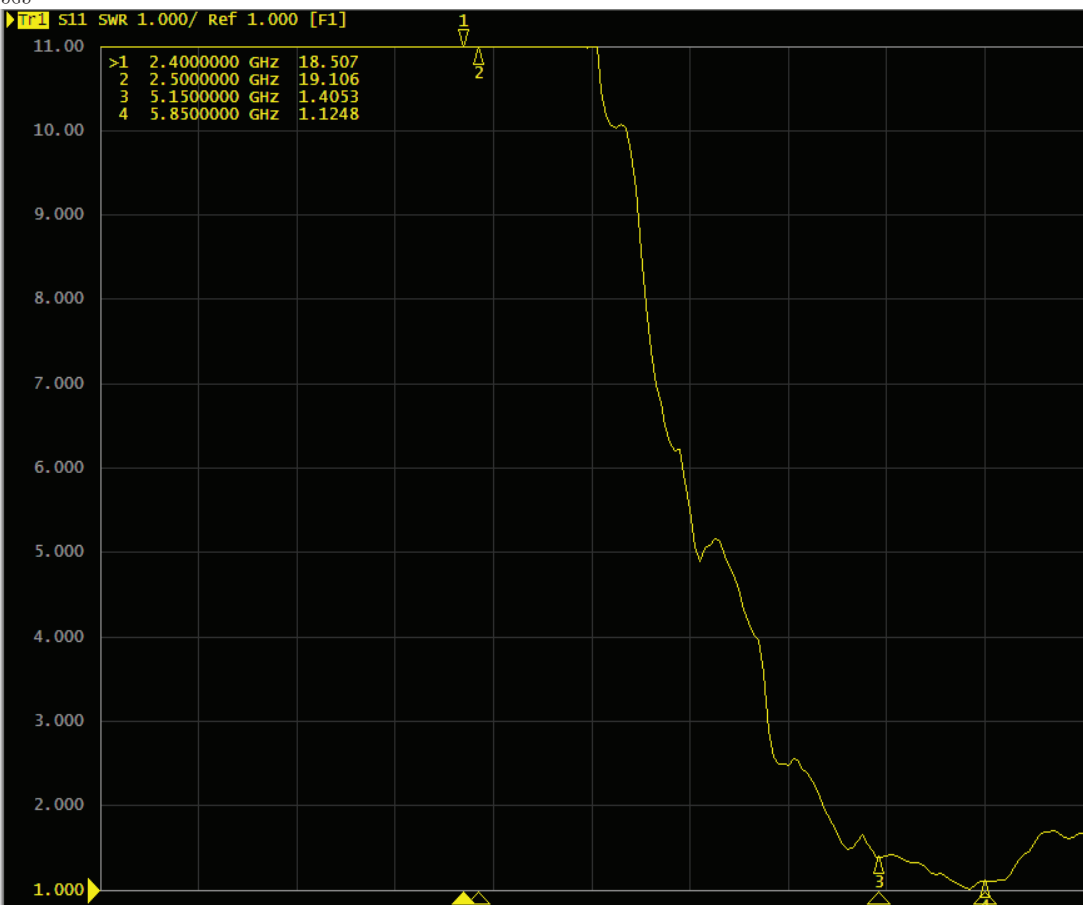
5G2&3



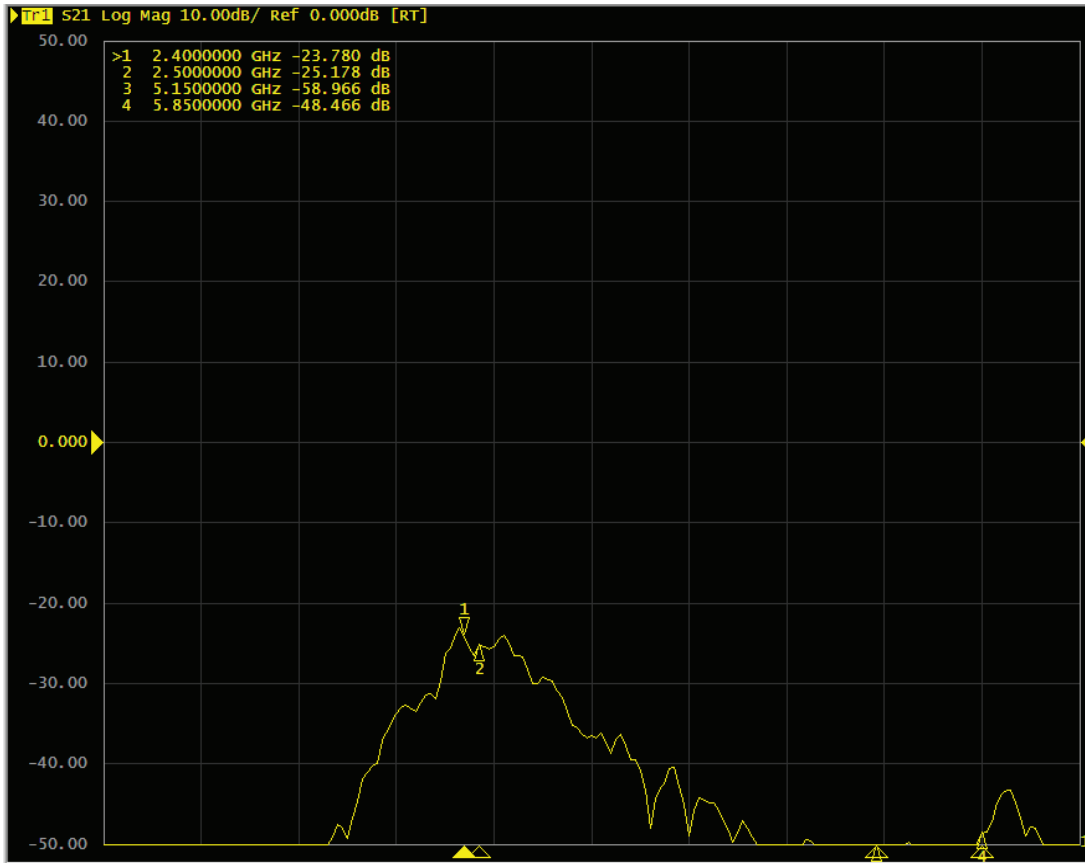
2.4G3



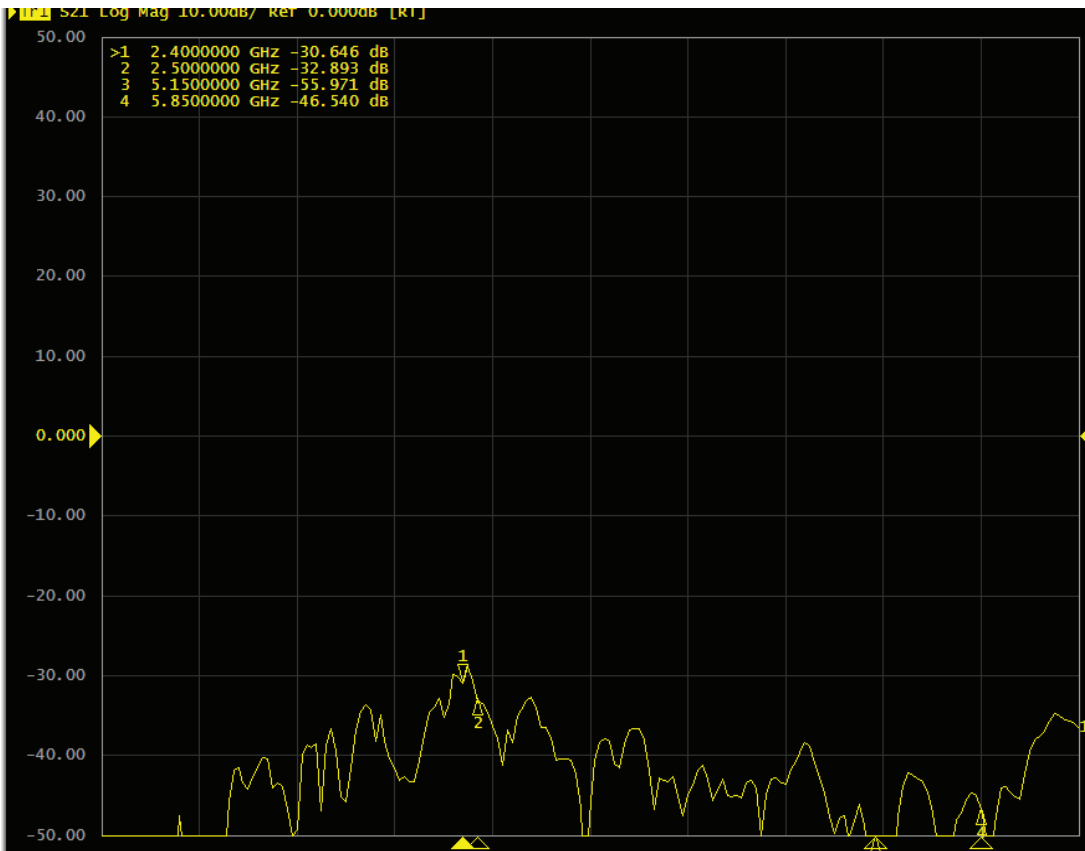
5G3



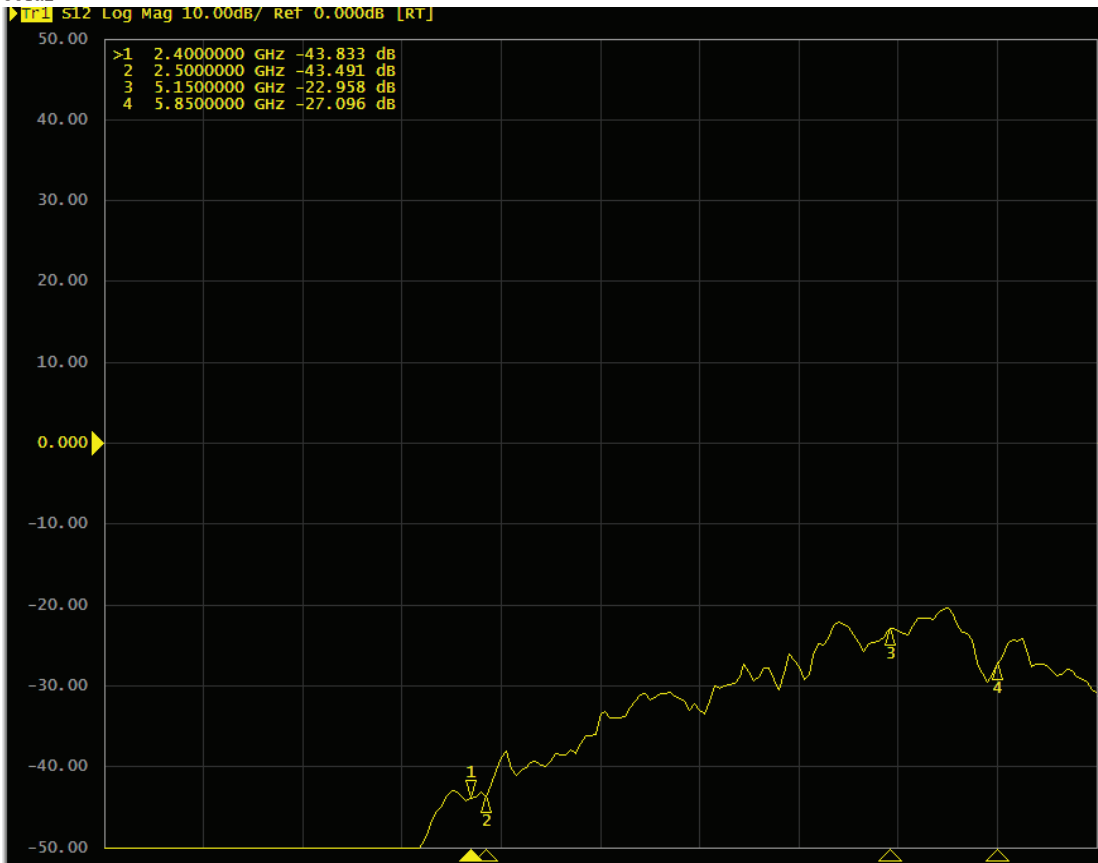
2.4G1&4



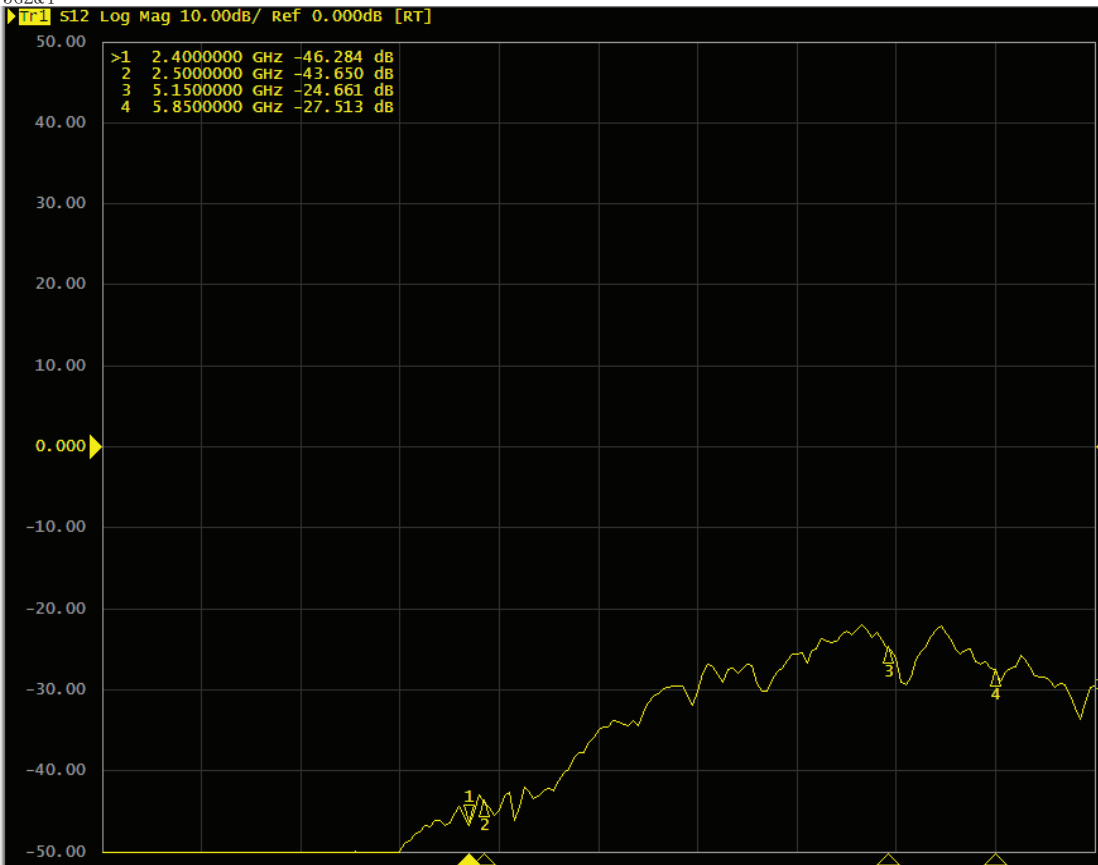
BT&2.4G1



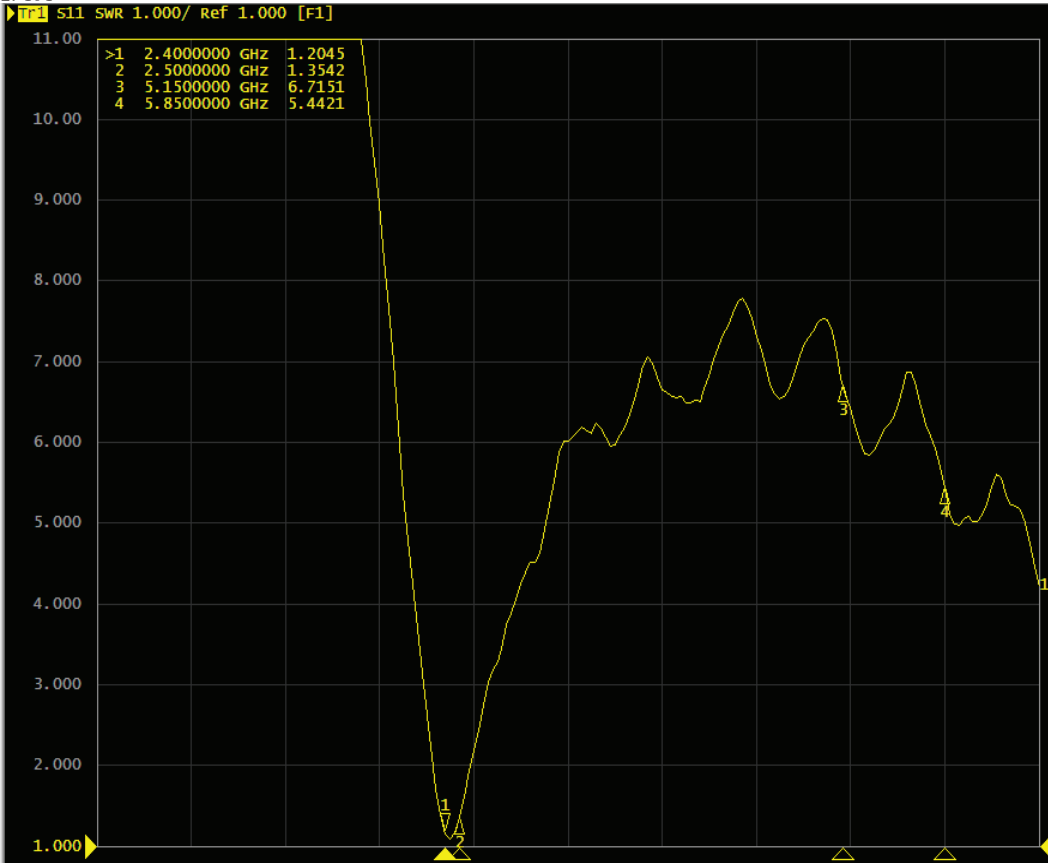
5G1&2



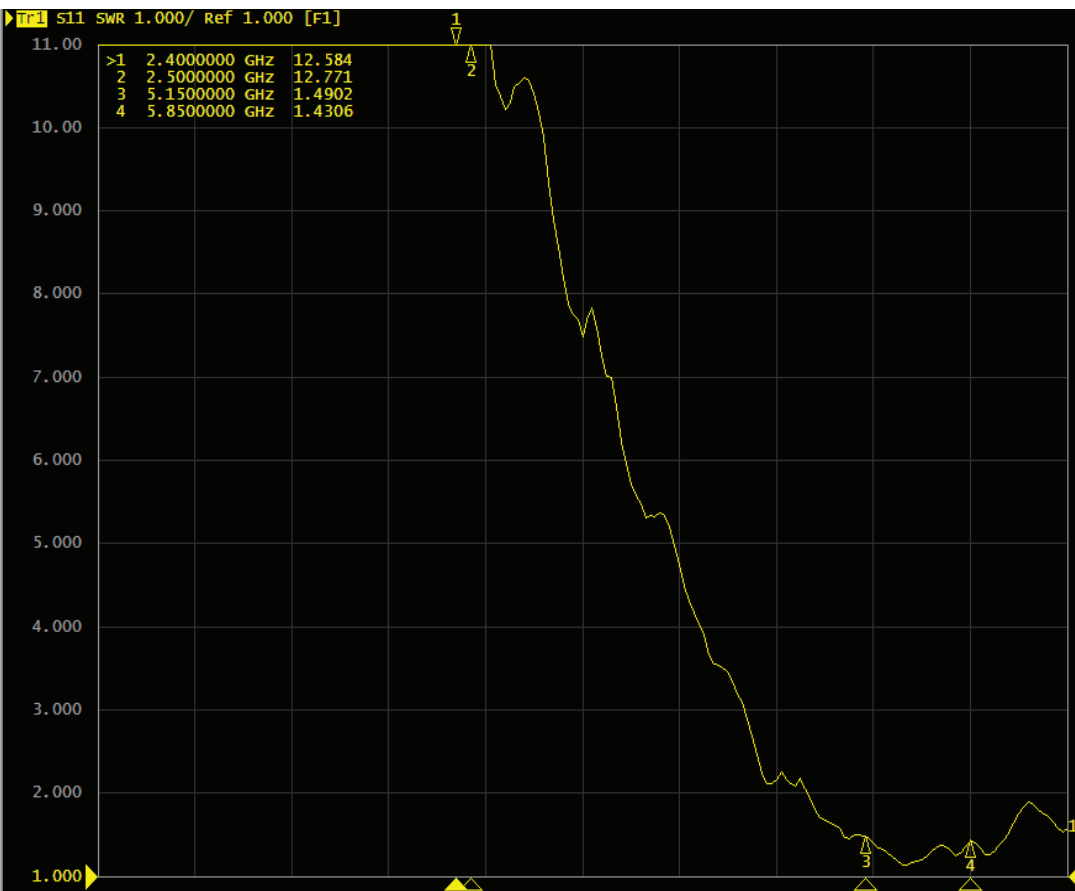
5G2&4



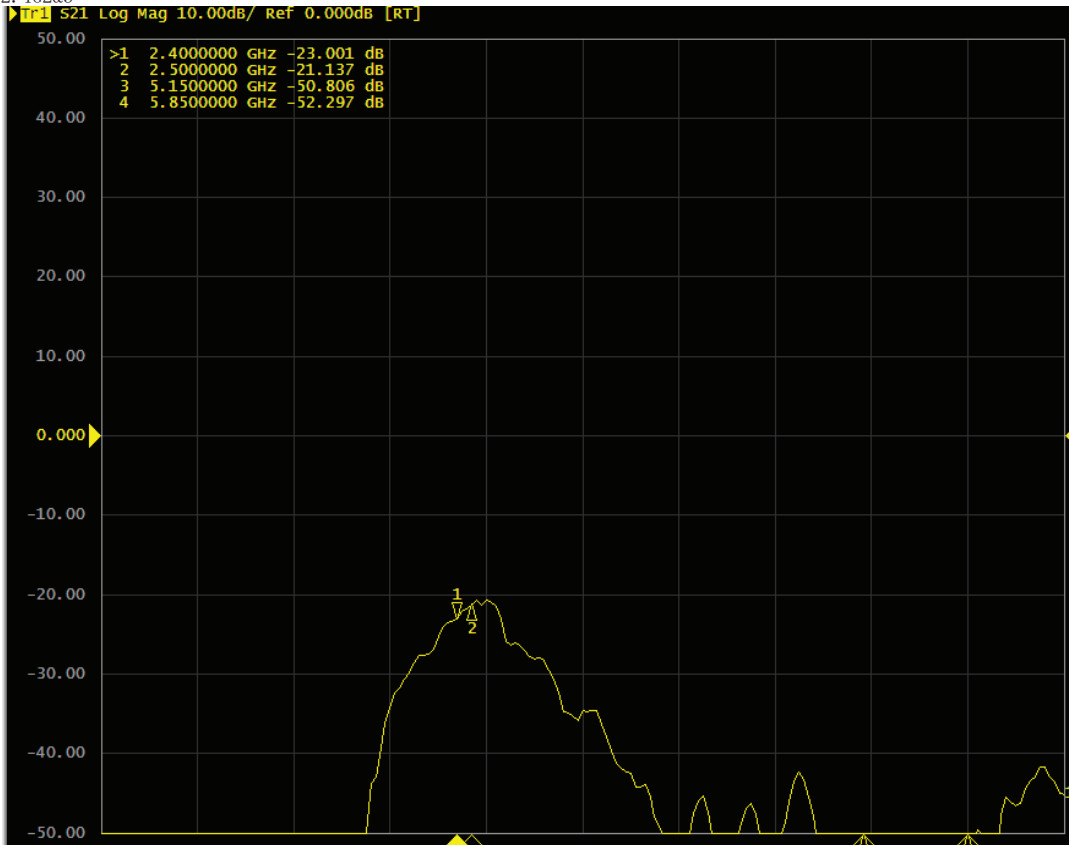
2.4G4



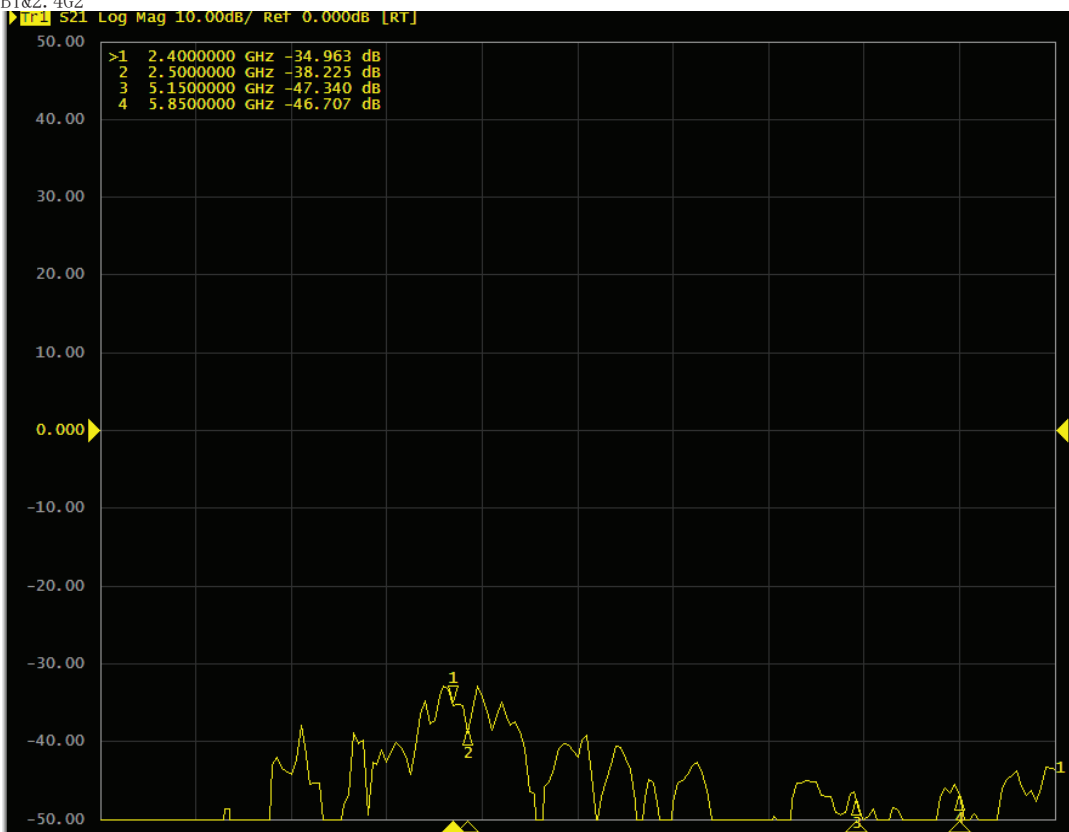
5G4



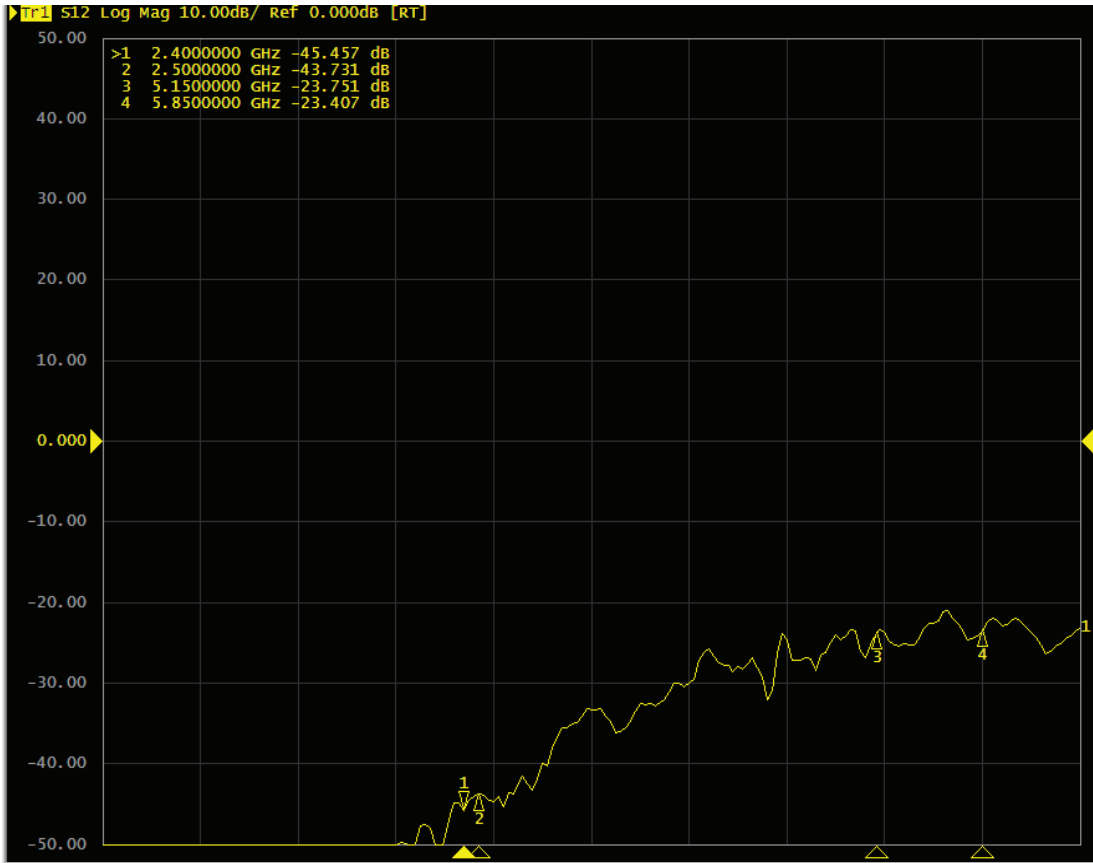
2.4G2&3



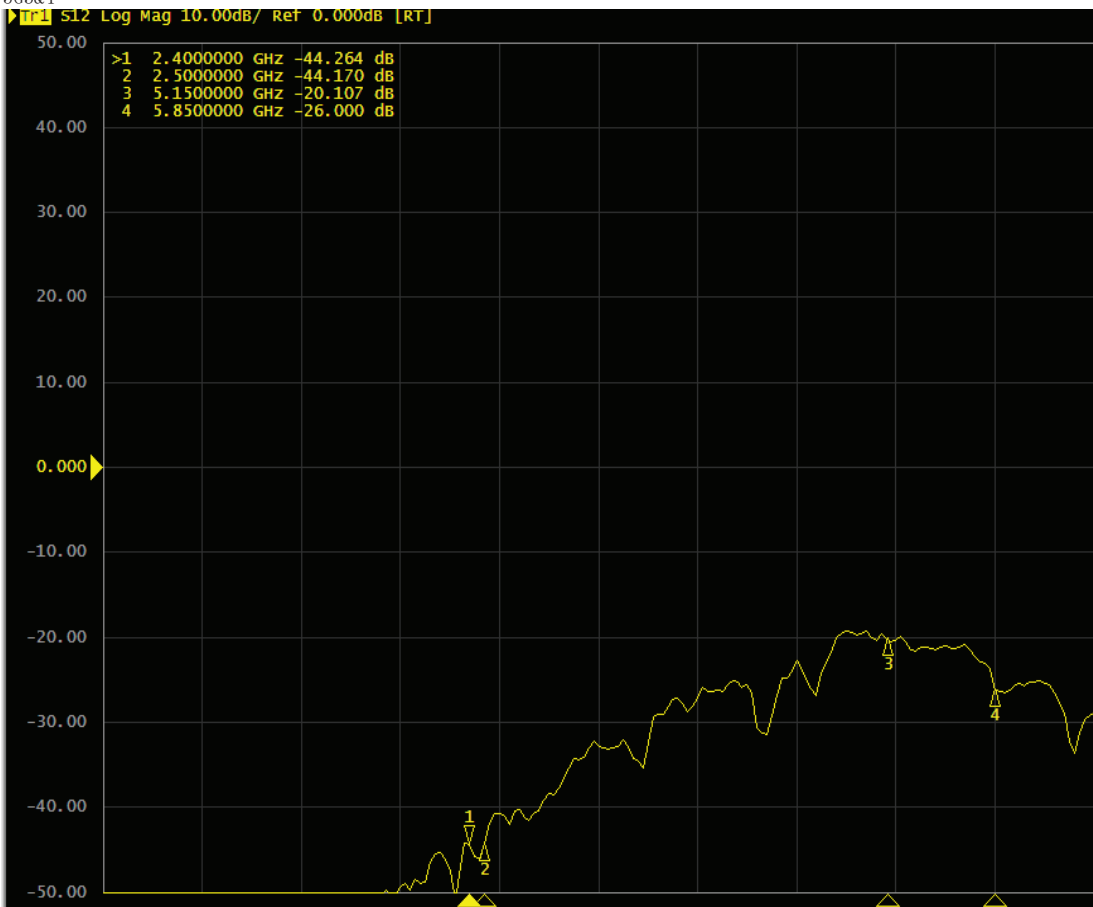
BT&2.4G2



5G1&3



5G3&4



3. Mechanical Dimension Drawing

