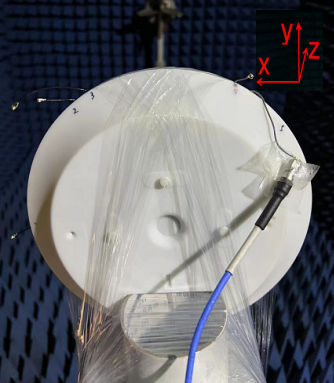



## 检测结果记录表

样品名称	EP262 (E)	样机型号		申请单编号	
检测依据	国标	样品数量	1台	样品编号	
检测项目	无源	检测设备	E5071C	检测条件	22.2°C/ 43 %
检测目的	\				

### 检测结果记录

申请人/送样人	\	软件版本		硬件版本	—
样机信息 (含S/N号)	 <p>H: xoy E1: xoz E2: zoy</p>				

### 备注说明

Freq (MHz)	Effi (%)	Max (dB)	Freq (MHz)	Effi (%)	Max (dB)	Freq (MHz)	Effi (%)	Max (dB)
2400	64.6	2.32	2400	74.34	3.53			
2410	60.8	2.03	2410	70.33	3.1			
2420	60.06	2.08	2420	69.79	2.79			
2430	62.36	2.27	2430	72.05	3.02			
2440	61.6	2.12	2440	70.85	3.2			
2450	60.17	2.12	2450	66.35	3.07			
2460	61.49	2.21	2460	66.71	3.16			
2470	63.96	2.78	2470	67	3.1			
2480	62.52	3.14	2480	63.66	2.91			
2490	59.8	3.05	2490	59.85	2.68			
2500	61.44	3.09	2500	61.11	2.75			
4 (2.4G)			5 (2.4G)					

Freq (MHz)	Effi (%)	Max (dB)	Freq (MHz)	Effi (%)	Max (dB)	Freq (MHz)	Effi (%)	Max (dB)
5150	68.43	4.2	5150	64.69	2.55	5150	60.46	2.69
5160	68.48	4.15	5160	65.36	3.19	5160	60.39	2.54
5170	67.46	4.13	5170	64.25	2.85	5170	60.02	2.27
5180	69.82	4.21	5180	65.6	2.76	5180	60.03	2.13
5190	72.76	4.25	5190	67.36	2.96	5190	61.25	2.66
5200	68.3	3.98	5200	63.99	3.46	5200	59.56	2.26
5210	64.27	3.93	5210	60.13	2.87	5210	55.77	2.46
5220	64.79	3.49	5220	59.55	2.87	5220	54.99	2.52
5230	68.43	4.43	5230	61.53	2.82	5230	57.69	2.28
5240	63.4	3.57	5240	58.19	2.36	5240	53.24	2.45
5250	62.4	3.2	5250	56.41	2.22	5250	53.15	2.39
5260	64.79	3.65	5260	59.26	2.24	5260	54.35	2.41
5270	64.27	3.59	5270	58.64	2.56	5270	54.5	2.58
5280	59.01	3.15	5280	53.4	2.11	5280	49.62	2.1
5290	58.14	3.09	5290	52.96	2.14	5290	48.91	2.32
5300	62.14	3.39	5300	56.8	2.57	5300	51.34	2
5310	60.59	3.4	5310	56.99	2.52	5310	51.39	2.6
5320	56.02	2.57	5320	52	1.98	5320	46.72	1.58
5330	56.94	2.71	5330	53.48	2.34	5330	48.39	1.63
5340	61.15	3.24	5340	57.35	2.49	5340	52.34	2.74
5350	61.73	3.08	5350	58.23	2.87	5350	51.4	2.01
5360	58.67	2.86	5360	56.21	2.74	5360	49.2	1.45
5370	58.09	2.58	5370	55.22	2.87	5370	49.6	1.93
5380	59.58	2.77	5380	56.28	2.71	5380	50.67	1.86
5390	58.21	2.41	5390	56.07	2.92	5390	49.2	2.51
5400	59	2.61	5400	56.09	3.08	5400	50.93	1.93
5410	61.78	2.61	5410	58.9	3.04	5410	52.45	2.45
5420	62.87	2.86	5420	59.32	2.95	5420	52.52	1.78
5430	62.5	2.69	5430	60.31	2.88	5430	52.61	2.35

5440	62.02	2.7	5440	60.01	3.14	5440	53.37	2.88
5450	63.68	2.94	5450	60.94	3.39	5450	53.95	2.38
5460	64.07	2.85	5460	61.24	3.15	5460	53.54	2.83
5470	63.9	3.15	5470	61.48	3.21	5470	52.45	2.48
5480	65.42	2.85	5480	61.65	3.38	5480	55.81	3
5490	65.78	2.86	5490	62.05	3.49	5490	56.39	2.76
5500	67.64	3	5500	63.19	3.72	5500	56.12	3.06
5510	69.97	3.16	5510	64.24	3.56	5510	58.92	3.07
5520	70.68	3	5520	64.43	3.66	5520	59.73	3.45
5530	68.35	3.52	5530	61.97	3.42	5530	56.99	2.82
5540	68.2	3.31	5540	60.75	3.92	5540	54	3.17
5550	70.54	3.41	5550	62.03	3.94	5550	56.88	2.57
5560	68.02	3.62	5560	61.81	4.08	5560	55	2.47
5570	64.46	3.56	5570	57.89	3.55	5570	53.52	2.66
5580	65.58	3.79	5580	58.23	3.29	5580	52.3	2.62
5590	68.61	4.01	5590	60.56	3.66	5590	56.57	2.46
5600	69.17	4.27	5600	60.26	3.63	5600	56.38	2.36
5610	62.31	4.13	5610	54.73	3.38	5610	52.07	1.76
5620	65.34	4.42	5620	58.02	3.3	5620	55.07	2.32
5630	68.74	4.82	5630	60.89	3.69	5630	57.25	3.12
5640	68.82	5.15	5640	61.04	3.34	5640	56.17	3.21
5650	62.05	4.62	5650	55.62	3.14	5650	51.83	2.37
5660	65.11	4.76	5660	59.65	3.41	5660	54.9	2.11
5670	66.45	5.13	5670	61.25	3.1	5670	56.22	2.29
5680	68.35	5.07	5680	61.1	3.52	5680	55.48	2.48
5690	62.49	4.74	5690	57.73	3.15	5690	52.59	2.2
5700	68.3	4.78	5700	60.22	3.09	5700	55.54	2.64
5710	68.56	4.93	5710	63.28	3.17	5710	57.61	1.95
5720	66.17	4.73	5720	62.34	3.14	5720	55.21	2.06
5730	68.5	4.83	5730	64.13	3.44	5730	57.37	3.02
5740	70.77	4.57	5740	65.43	3.44	5740	58.41	3.25
5750	70.22	4.94	5750	65.61	3.97	5750	58.02	2.38
5760	67.78	4.67	5760	64.36	3.7	5760	58.43	2.03
5770	69.44	4.84	5770	65.08	3.59	5770	57.34	2.36
5780	70.22	4.69	5780	66.55	4.08	5780	59.55	2.79
5790	72.61	5	5790	66.61	3.91	5790	58.83	2.24
5800	71.41	4.88	5800	65.22	4.09	5800	57.48	2.65
5810	72.14	4.92	5810	64.79	4.4	5810	59.26	2.24
5820	70.92	4.59	5820	62.25	3.84	5820	57.4	2.45
5830	71.83	4.79	5830	63.18	3.72	5830	56.95	2.33
5840	68.16	4.66	5840	61.29	3.73	5840	57.21	2.47
5850	68.02	4.45	5850	57.58	3.59	5850	54.34	1.92
1 (5G)			2 (5G)			3 (5G)		
检测人员/日期			Sean/20220517			审核/日期		Wensen/20220517

Manufacturer

Fuzhou JieLei Electronic Technology Co.,Ltd.

Fuzhou JieLei Electronic Technology Co.,Ltd.C1-1425, Fuli Center, Taijiang District, Fuzhou City, Fujian Province

2G-TX0 model:C168-JL-4421

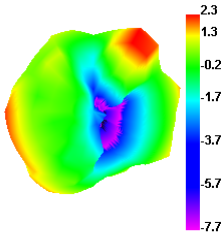
2G-TX1 model:C168-JL-4422

5G-TX0 model:C168-JL-4424

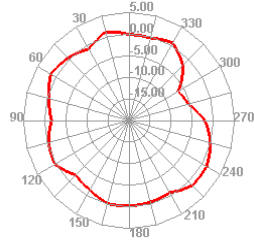
5G-TX1 model:C168-JL-6148

5G-TX2 model:C168-JL-6147

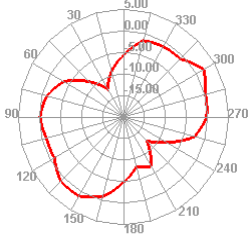
2400.000MHz



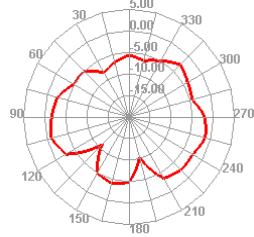
2400.000MHz H



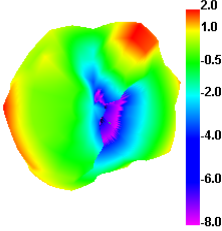
2400.000MHz E1



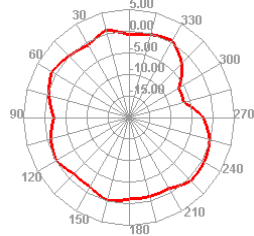
2400.000MHz E2



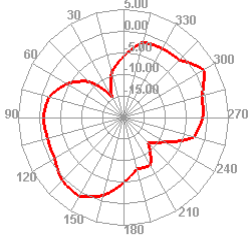
2410.000MHz



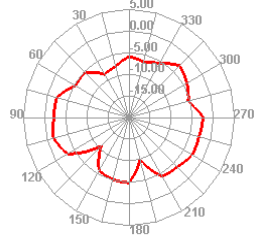
2410.000MHz H



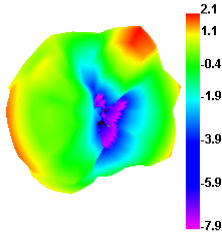
2410.000MHz E1



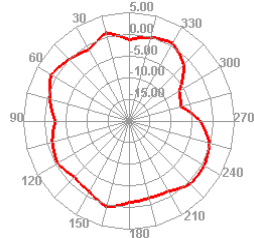
2410.000MHz E2



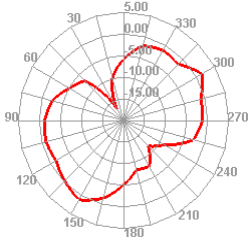
2420.000MHz



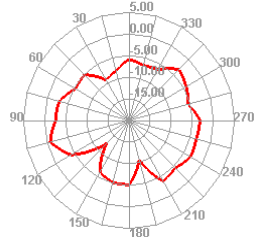
2420.000MHz H



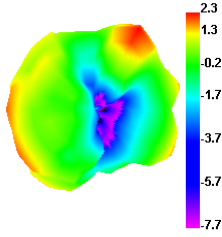
2420.000MHz E1



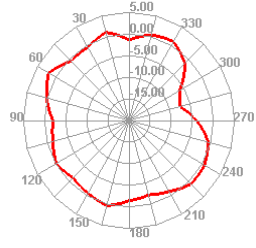
2420.000MHz E2



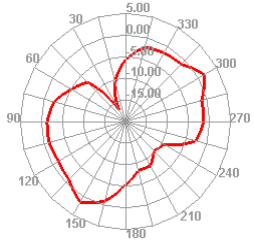
2430.000MHz



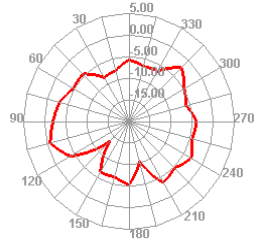
2430.000MHz H



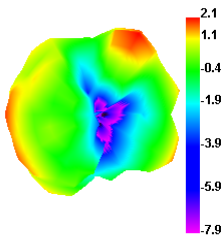
2430.000MHz E1



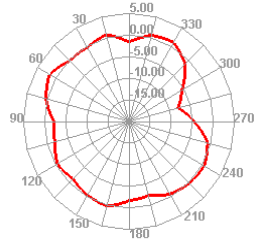
2430.000MHz E2



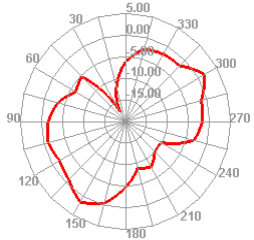
2440.000MHz



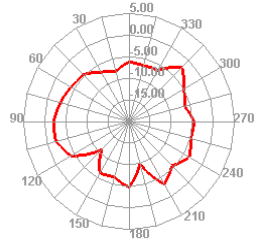
2440.000MHz H



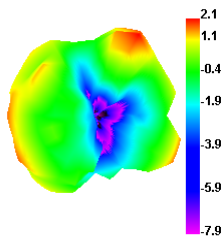
2440.000MHz E1



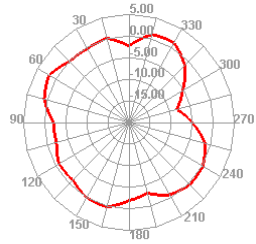
2440.000MHz E2



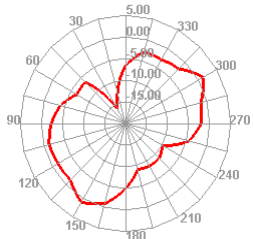
2450.000MHz



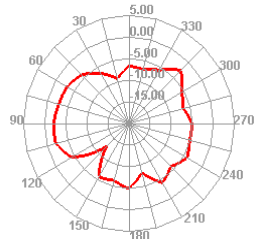
2450.000MHz H



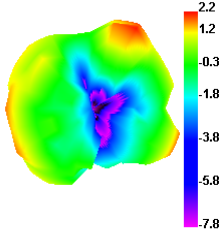
2450.000MHz E1



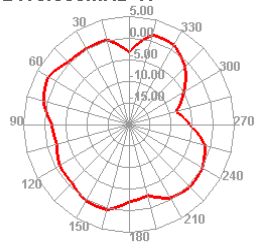
2450.000MHz E2



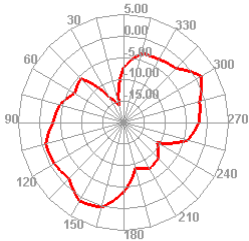
2460.000MHz



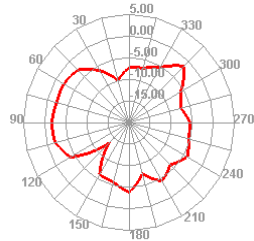
2460.000MHz H



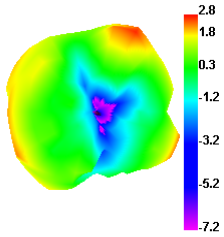
2460.000MHz E1



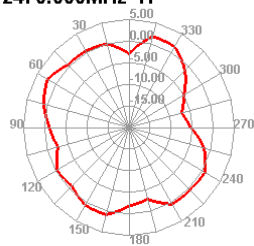
2460.000MHz E2



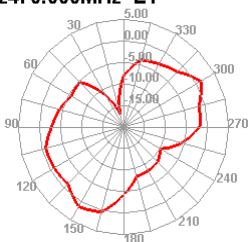
2470.000MHz



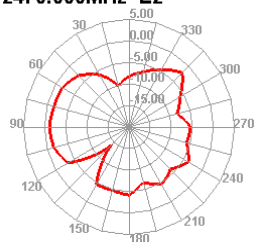
2470.000MHz H



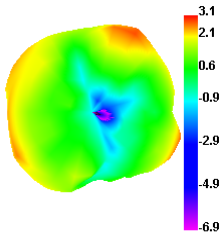
2470.000MHz E1



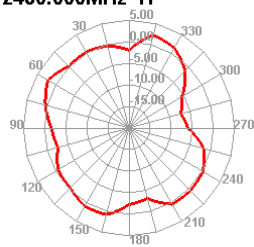
2470.000MHz E2



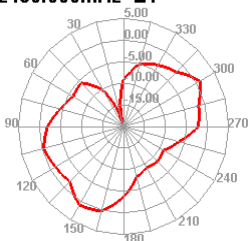
2480.000MHz



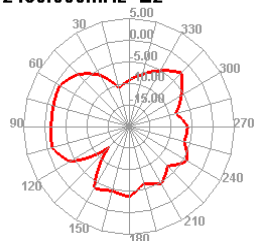
2480.000MHz H



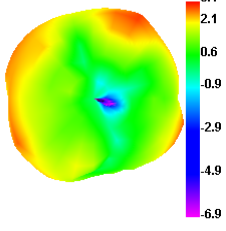
2480.000MHz E1



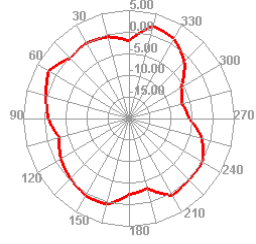
2480.000MHz E2



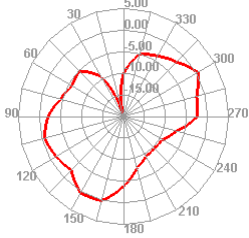
2490.000MHz



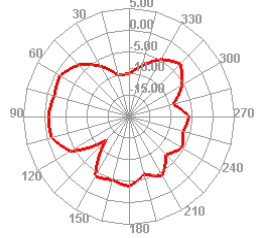
2490.000MHz H



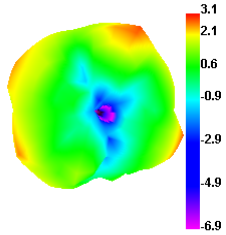
2490.000MHz E1



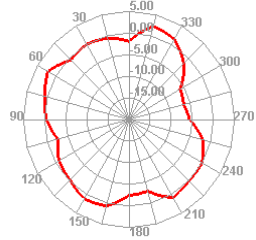
2490.000MHz E2



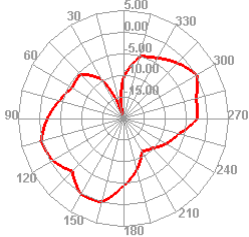
2500.000MHz



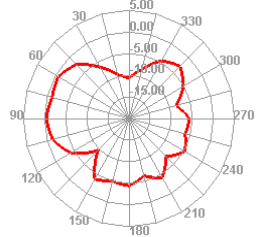
2500.000MHz H



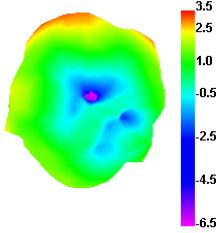
2500.000MHz E1



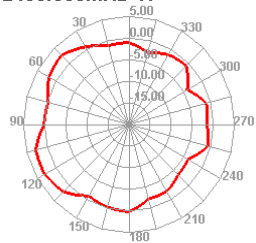
2500.000MHz E2



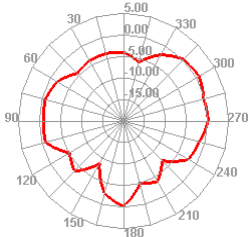
2400.000MHz



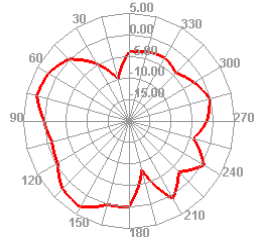
2400.000MHz H



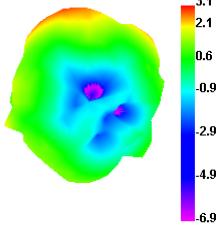
2400.000MHz E1



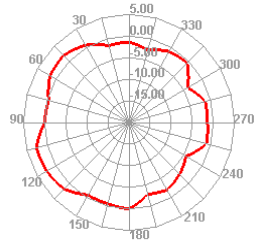
2400.000MHz E2



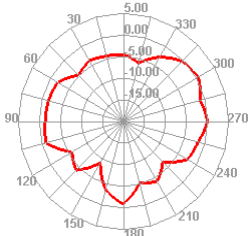
2410.000MHz



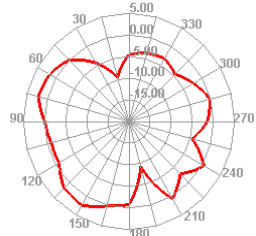
2410.000MHz H



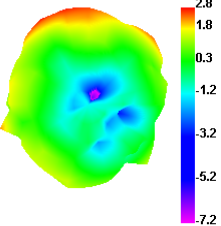
2410.000MHz E1



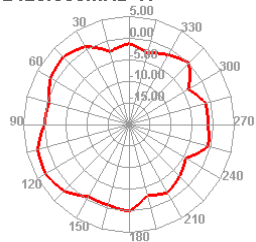
2410.000MHz E2



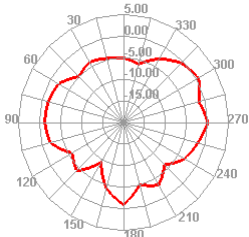
2420.000MHz



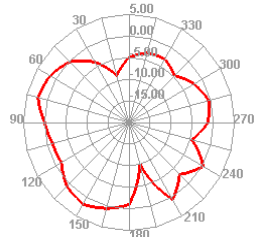
2420.000MHz H



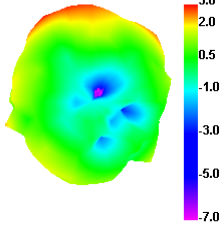
2420.000MHz E1



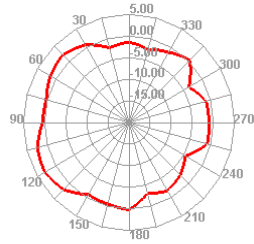
2420.000MHz E2



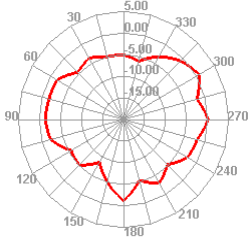
2430.000MHz



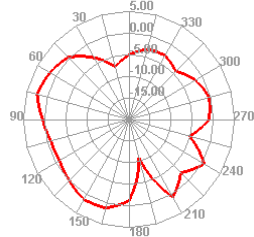
2430.000MHz H



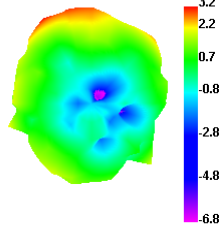
2430.000MHz E1



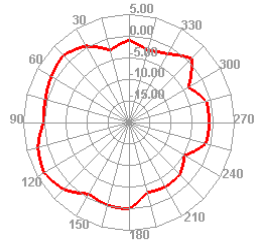
2430.000MHz E2



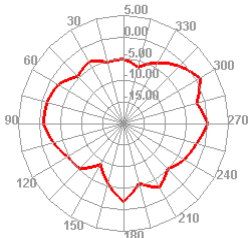
2440.000MHz



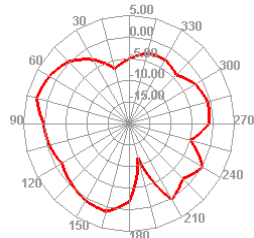
2440.000MHz H



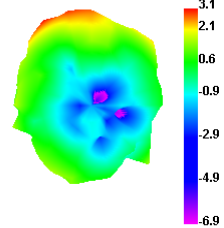
2440.000MHz E1



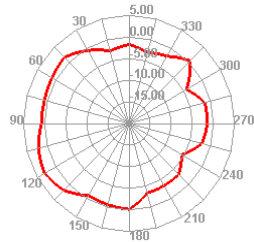
2440.000MHz E2



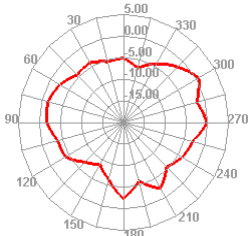
2450.000MHz



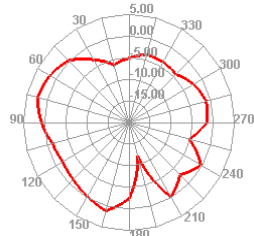
2450.000MHz H



2450.000MHz E1

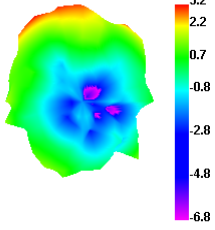


2450.000MHz E2

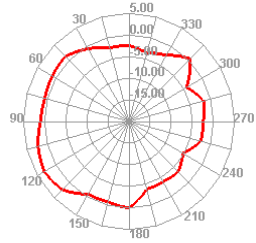




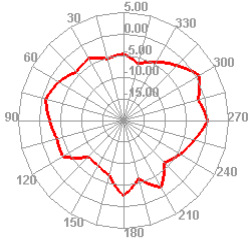
2460.000MHz



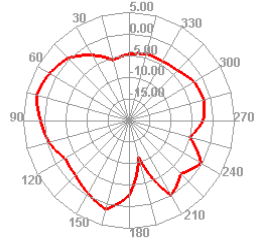
2460.000MHz H



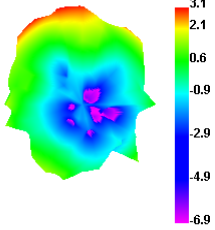
2460.000MHz E1



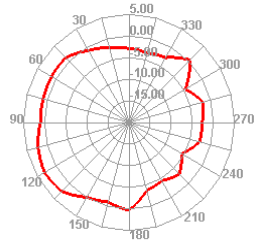
2460.000MHz E2



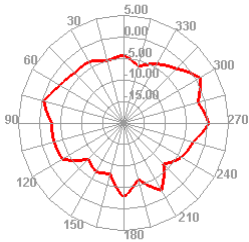
2470.000MHz



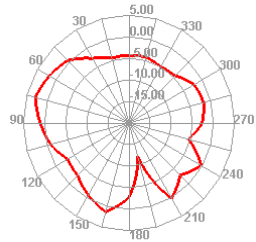
2470.000MHz H



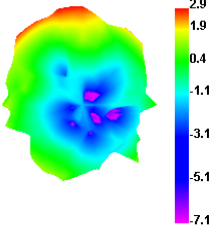
2470.000MHz E1



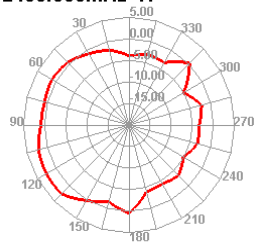
2470.000MHz E2



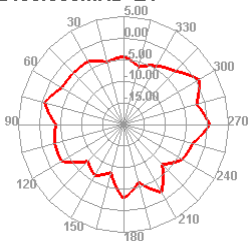
2480.000MHz



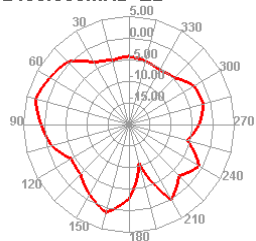
2480.000MHz H



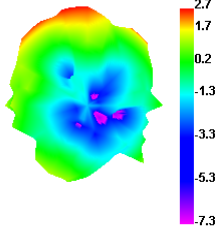
2480.000MHz E1



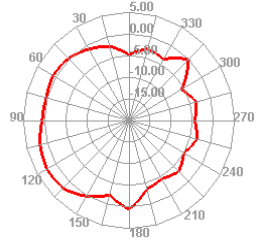
2480.000MHz E2



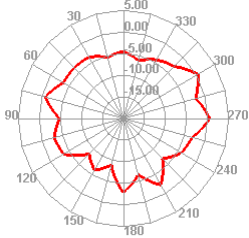
2490.000MHz



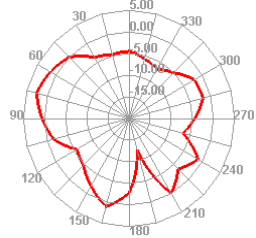
2490.000MHz H



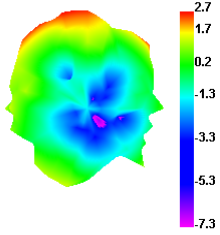
2490.000MHz E1



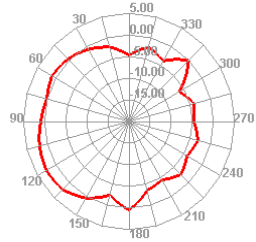
2490.000MHz E2



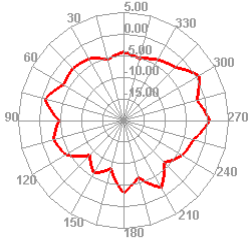
2500.000MHz



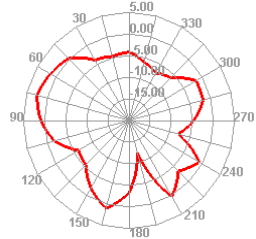
2500.000MHz H



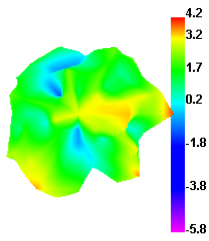
2500.000MHz E1



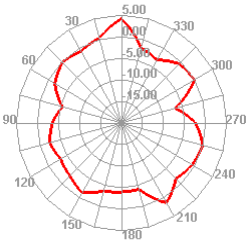
2500.000MHz E2



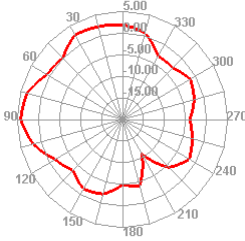
5150.000MHz



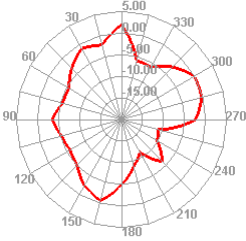
5150.000MHz H



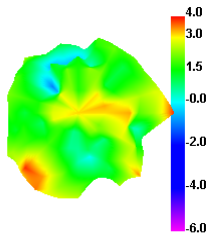
5150.000MHz E1



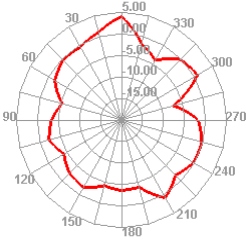
5150.000MHz E2



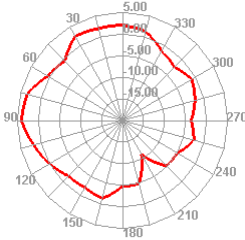
5200.000MHz



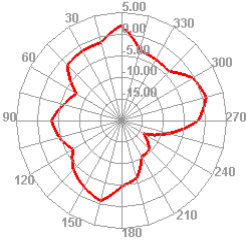
5200.000MHz H



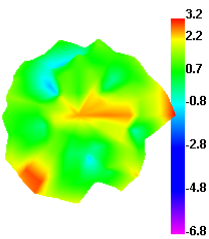
5200.000MHz E1



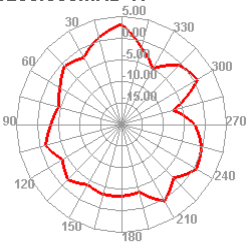
5200.000MHz E2



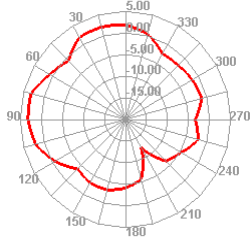
5250.000MHz



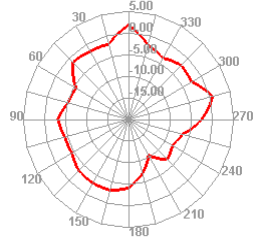
5250.000MHz H



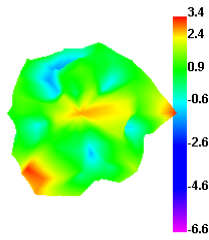
5250.000MHz E1



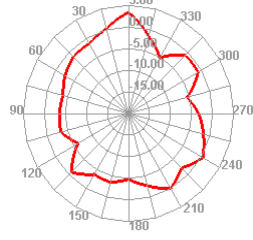
5250.000MHz E2



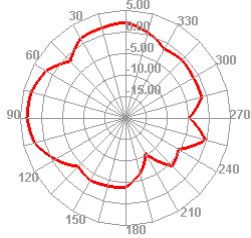
5300.000MHz



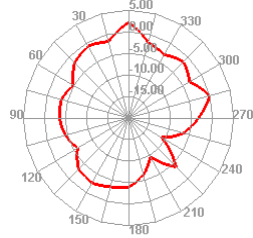
5300.000MHz H



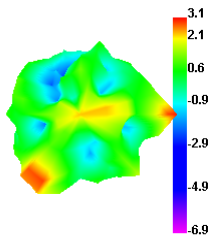
5300.000MHz E1



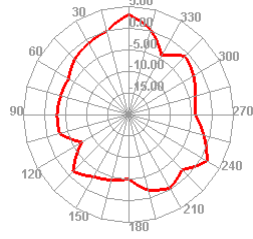
5300.000MHz E2



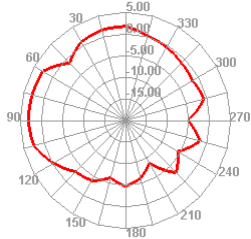
5350.000MHz



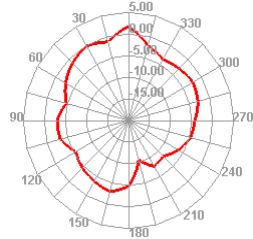
5350.000MHz H



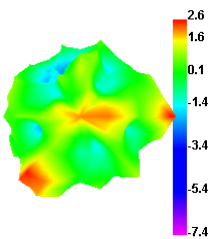
5350.000MHz E1



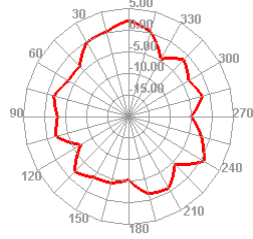
5350.000MHz E2



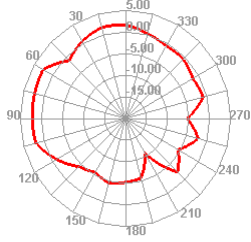
5400.000MHz



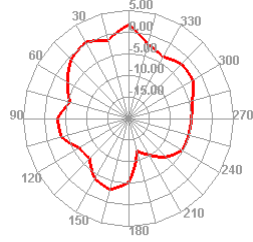
5400.000MHz H



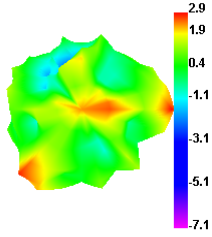
5400.000MHz E1



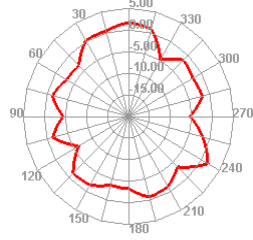
5400.000MHz E2



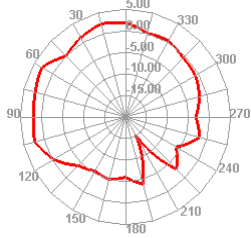
5450.000MHz



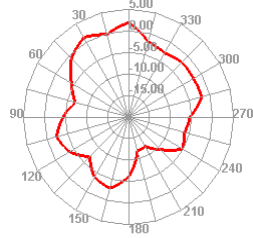
5450.000MHz H



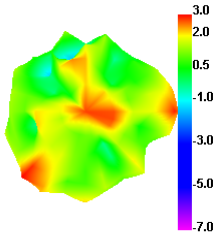
5450.000MHz E1



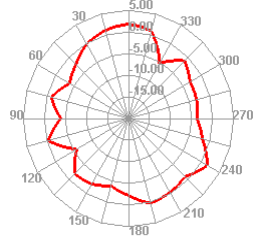
5450.000MHz E2



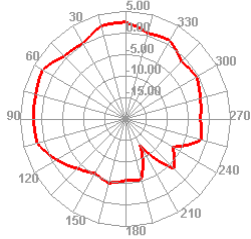
5500.000MHz



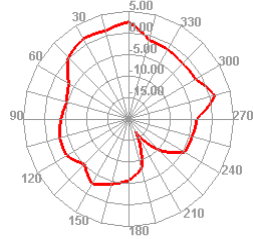
5500.000MHz H



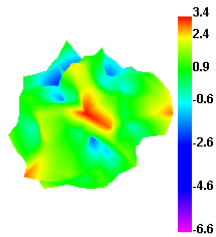
5500.000MHz E1



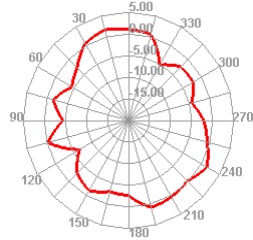
5500.000MHz E2



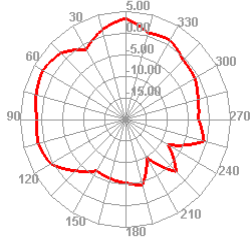
5550.000MHz



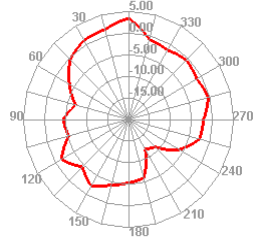
5550.000MHz H



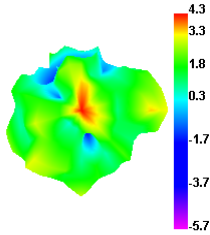
5550.000MHz E1



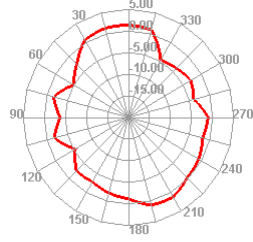
5550.000MHz E2



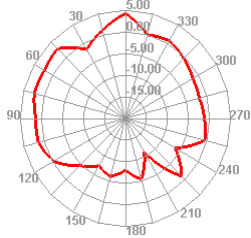
5600.000MHz



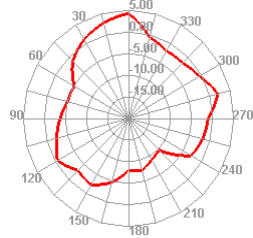
5600.000MHz H



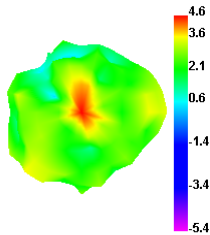
5600.000MHz E1



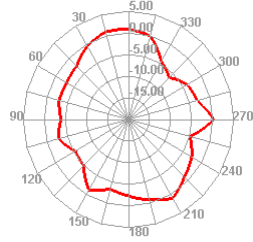
5600.000MHz E2



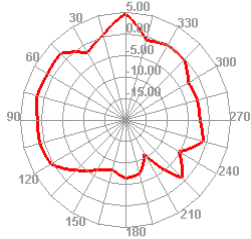
5650.000MHz



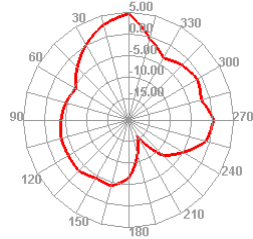
5650.000MHz H



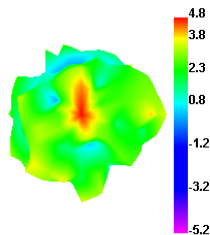
5650.000MHz E1



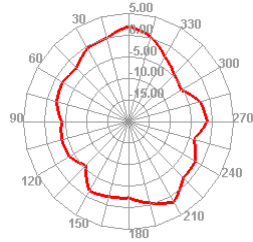
5650.000MHz E2



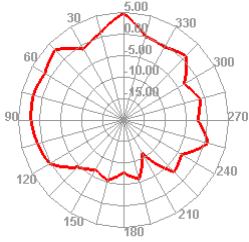
5700.000MHz



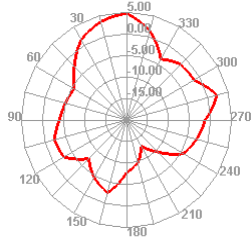
5700.000MHz H



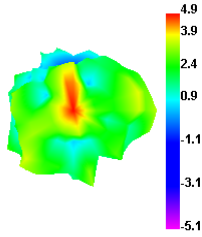
5700.000MHz E1



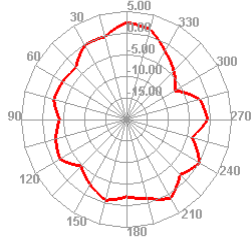
5700.000MHz E2



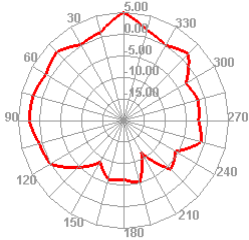
5750.000MHz



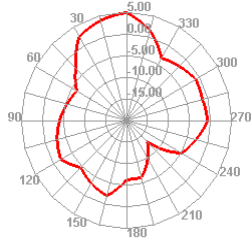
5750.000MHz H



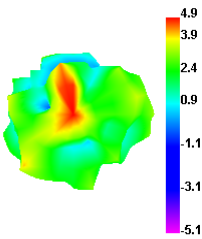
5750.000MHz E1



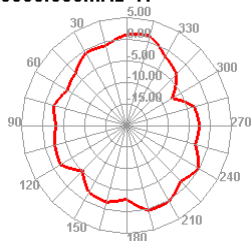
5750.000MHz E2



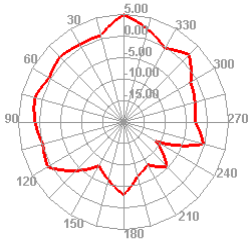
5800.000MHz



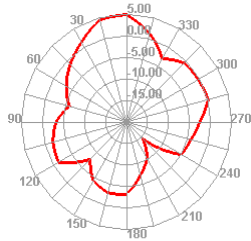
5800.000MHz H



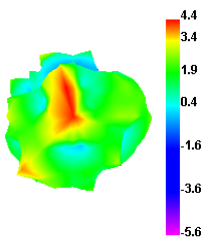
5800.000MHz E1



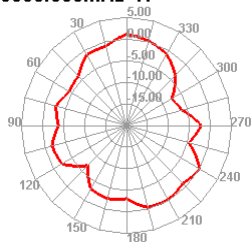
5800.000MHz E2



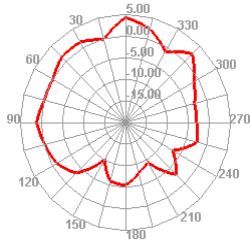
5850.000MHz



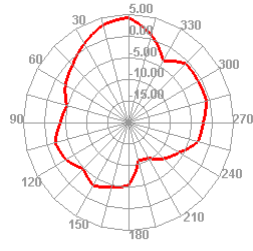
5850.000MHz H



5850.000MHz E1

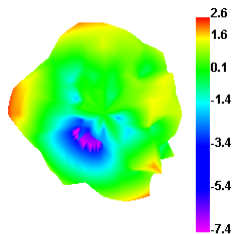


5850.000MHz E2

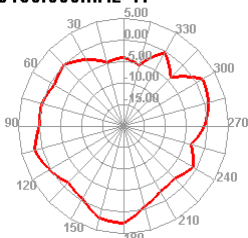




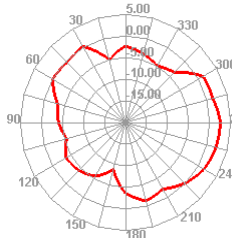
5150.000MHz



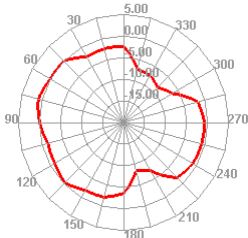
5150.000MHz H



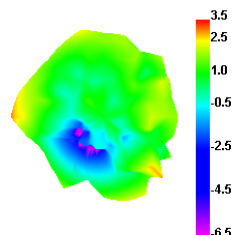
5150.000MHz E1



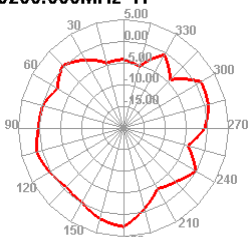
5150.000MHz E2



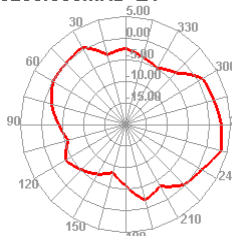
5200.000MHz



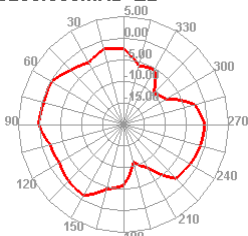
5200.000MHz H



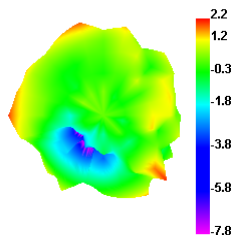
5200.000MHz E1



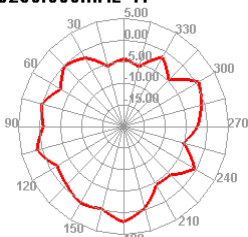
5200.000MHz E2



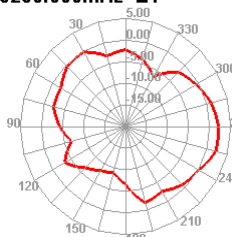
5250.000MHz



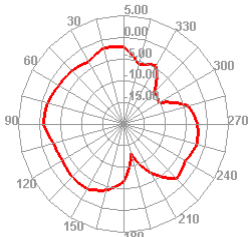
5250.000MHz H



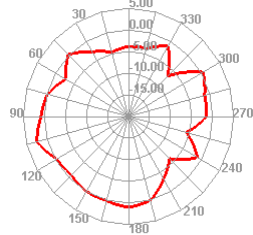
5250.000MHz E1



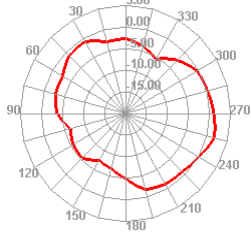
5250.000MHz E2



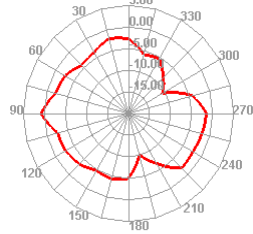
5300.000MHz H



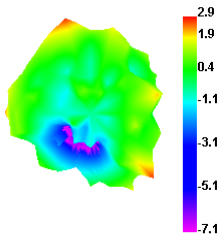
5300.000MHz E1



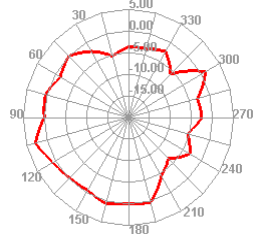
5300.000MHz E2



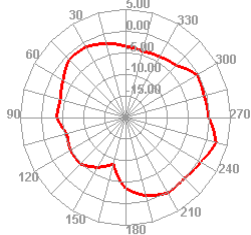
5350.000MHz



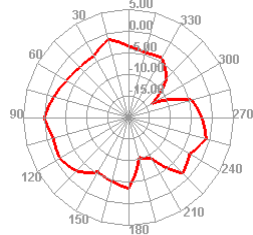
5350.000MHz H



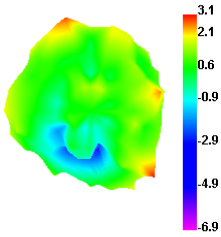
5350.000MHz E1



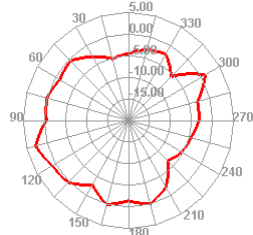
5350.000MHz E2



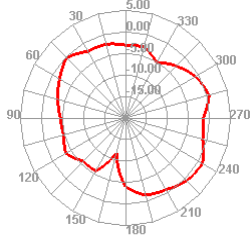
5400.000MHz



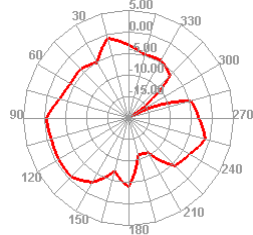
5400.000MHz H



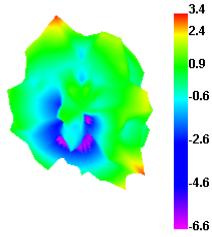
5400.000MHz E1



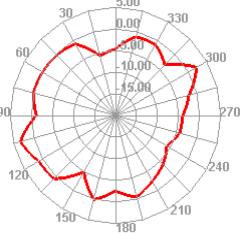
5400.000MHz E2



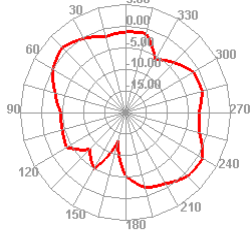
5450.000MHz



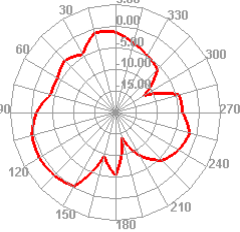
5450.000MHz H



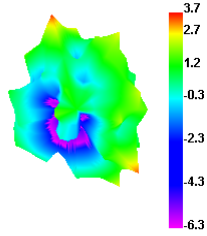
5450.000MHz E1



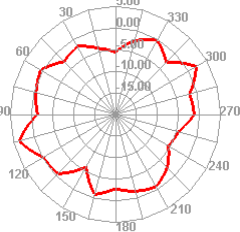
5450.000MHz E2



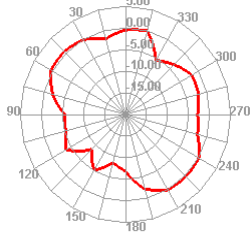
5500.000MHz



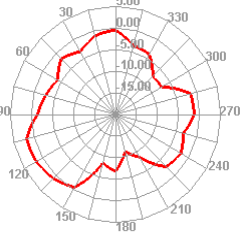
5500.000MHz H



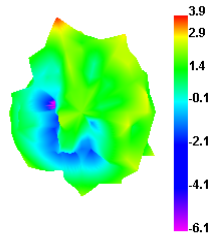
5500.000MHz E1



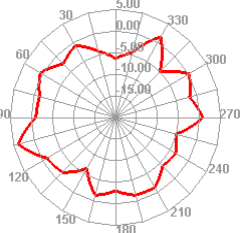
5500.000MHz E2



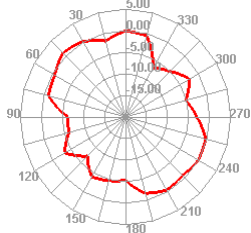
5550.000MHz



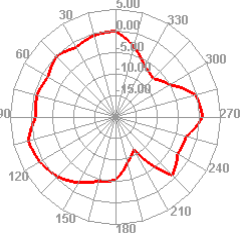
5550.000MHz H



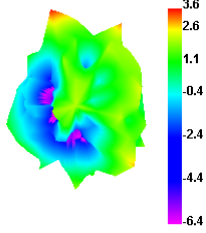
5550.000MHz E1



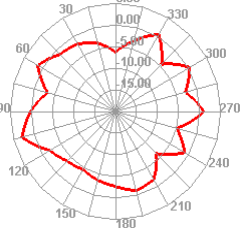
5550.000MHz E2



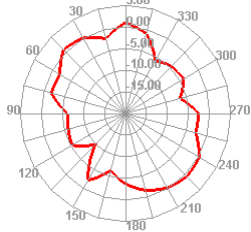
5600.000MHz



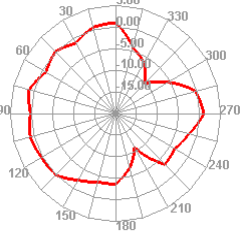
5600.000MHz H



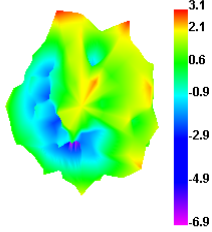
5600.000MHz E1



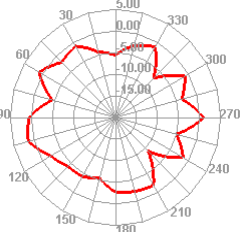
5600.000MHz E2



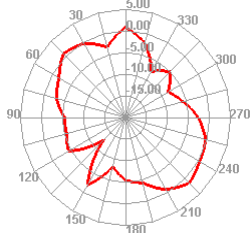
5650.000MHz



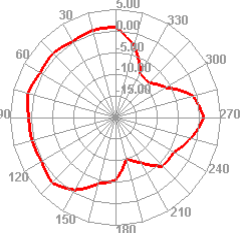
5650.000MHz H



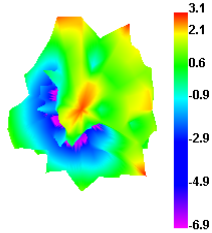
5650.000MHz E1



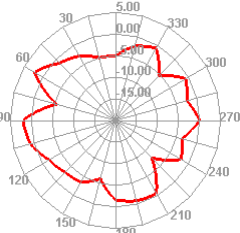
5650.000MHz E2



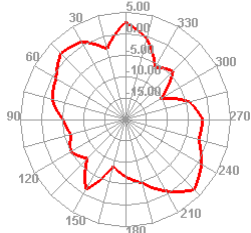
5700.000MHz



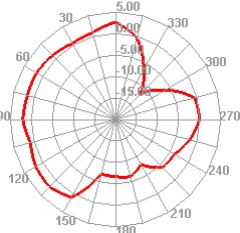
5700.000MHz H



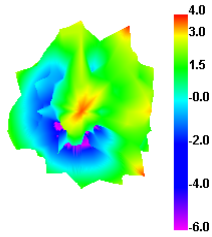
5700.000MHz E1



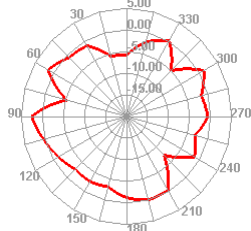
5700.000MHz E2



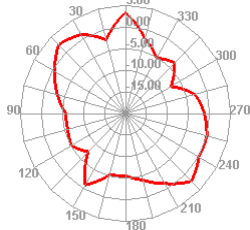
5750.000MHz



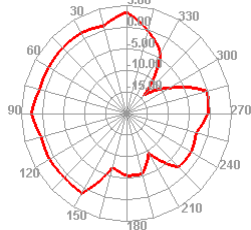
5750.000MHz H



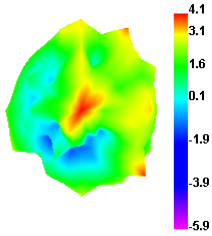
5750.000MHz E1



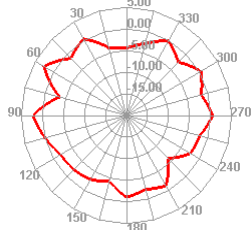
5750.000MHz E2



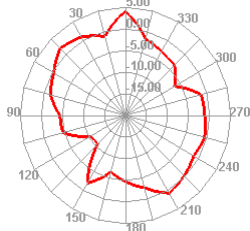
5800.000MHz



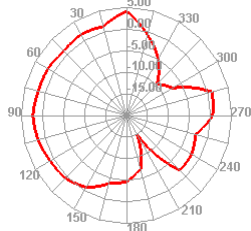
5800.000MHz H



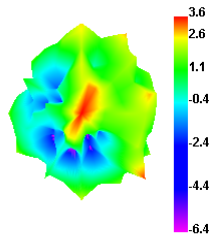
5800.000MHz E1



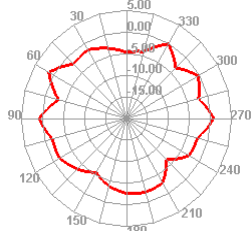
5800.000MHz E2



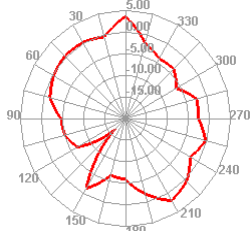
5850.000MHz



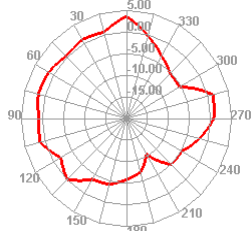
5850.000MHz H



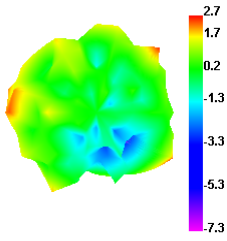
5850.000MHz E1



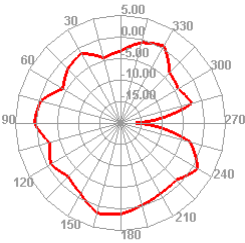
5850.000MHz E2



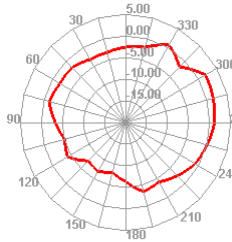
5150.000MHz



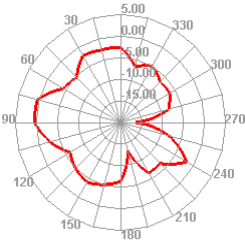
5150.000MHz H



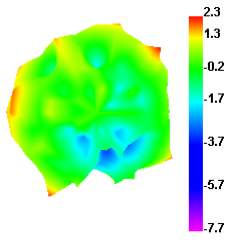
5150.000MHz E1



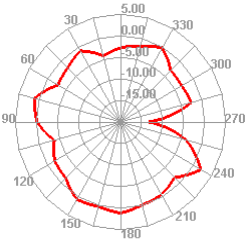
5150.000MHz E2



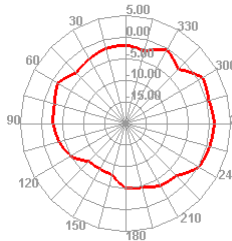
5200.000MHz



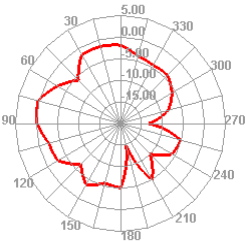
5200.000MHz H



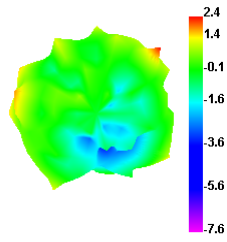
5200.000MHz E1



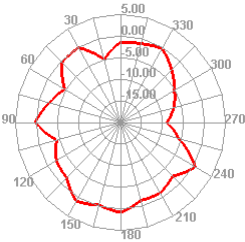
5200.000MHz E2



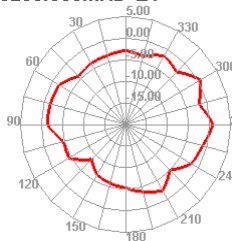
5250.000MHz



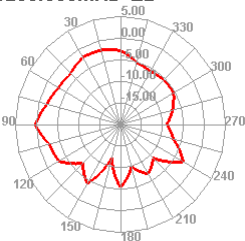
5250.000MHz H



5250.000MHz E1

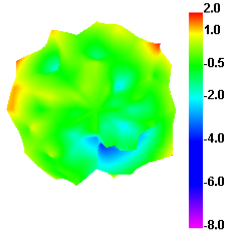


5250.000MHz E2

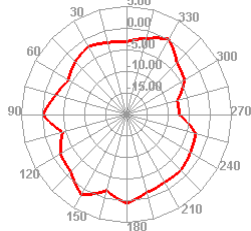


-----

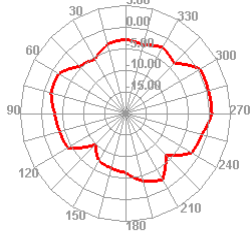
5300.000MHz



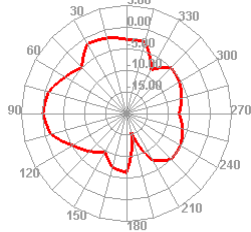
5300.000MHz H



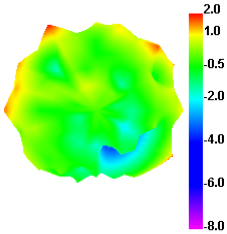
5300.000MHz E1



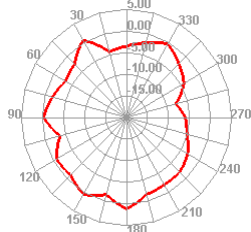
5300.000MHz E2



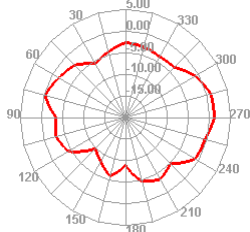
5350.000MHz



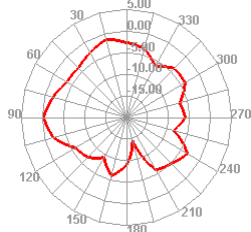
5350.000MHz H



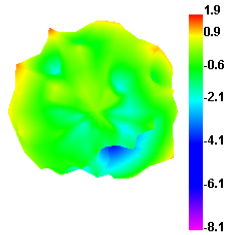
5350.000MHz E1



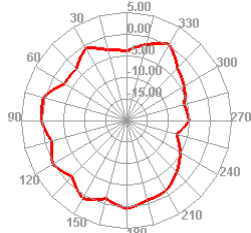
5350.000MHz E2



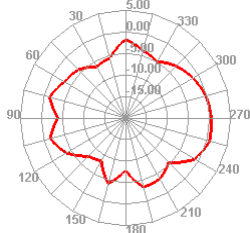
5400.000MHz



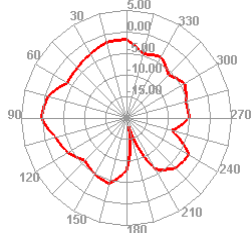
5400.000MHz H



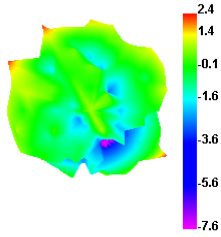
5400.000MHz E1



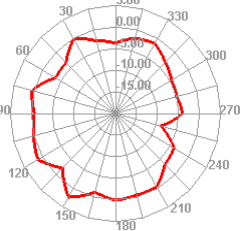
5400.000MHz E2



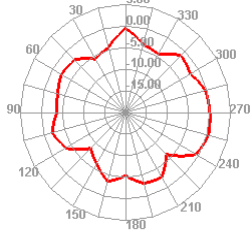
5450.000MHz



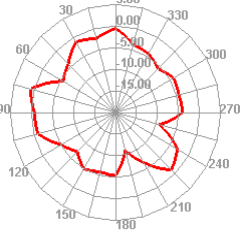
5450.000MHz H



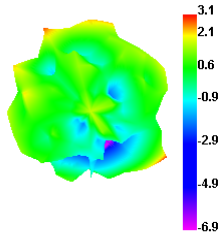
5450.000MHz E1



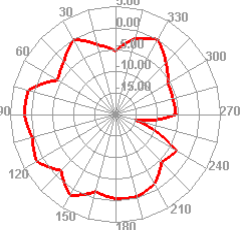
5450.000MHz E2



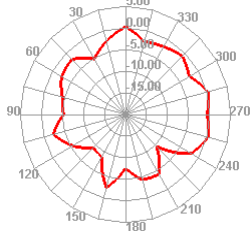
5500.000MHz



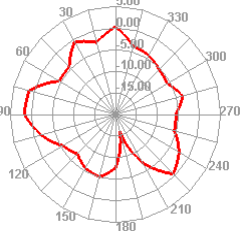
5500.000MHz H



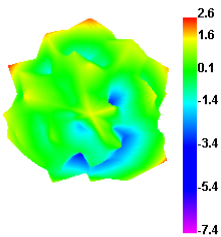
5500.000MHz E1



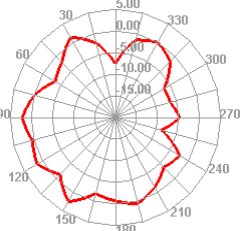
5500.000MHz E2



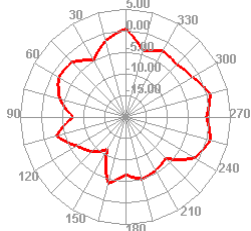
5550.000MHz



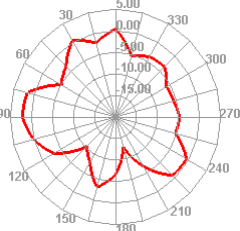
5550.000MHz H



5550.000MHz E1

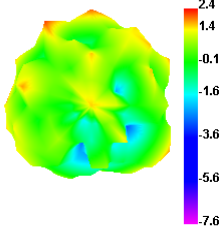


5550.000MHz E2

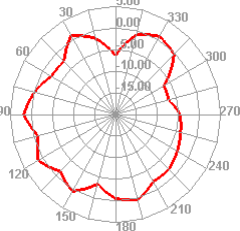




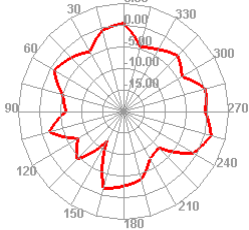
5600.000MHz



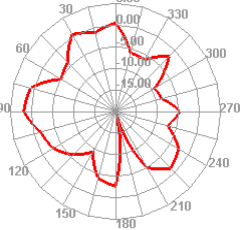
5600.000MHz H



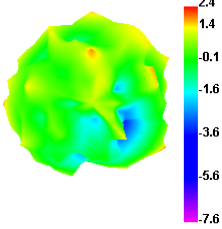
5600.000MHz E1



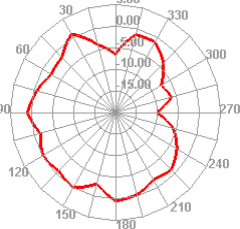
5600.000MHz E2



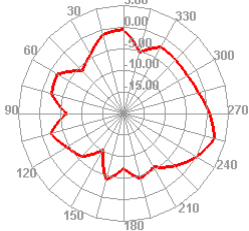
5650.000MHz



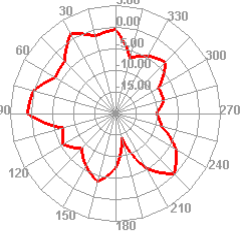
5650.000MHz H



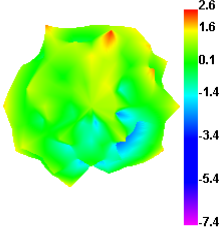
5650.000MHz E1



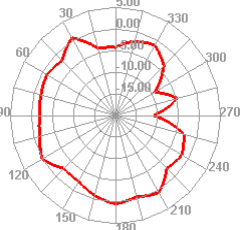
5650.000MHz E2



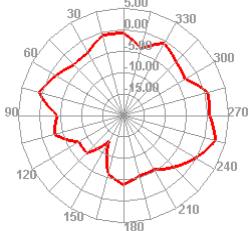
5700.000MHz



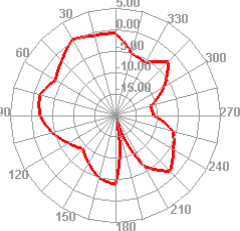
5700.000MHz H



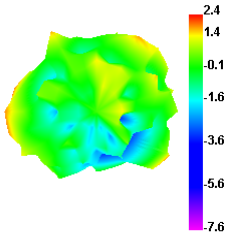
5700.000MHz E1



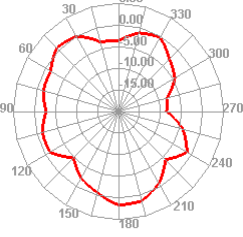
5700.000MHz E2



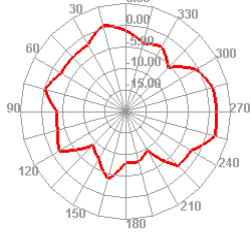
5750.000MHz



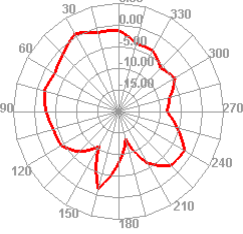
5750.000MHz H



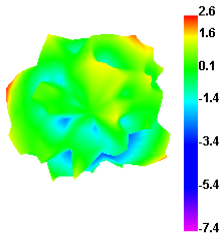
5750.000MHz E1



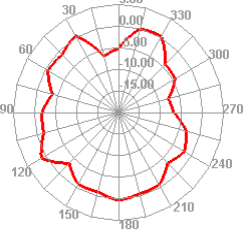
5750.000MHz E2



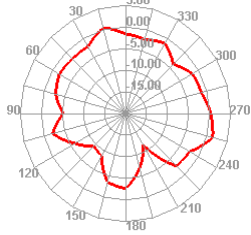
5800.000MHz



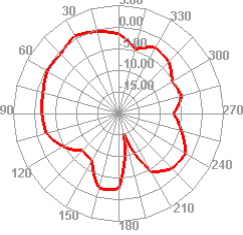
5800.000MHz H



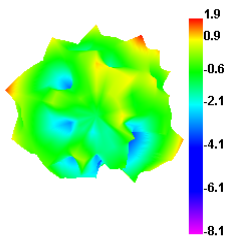
5800.000MHz E1



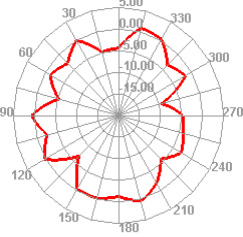
5800.000MHz E2



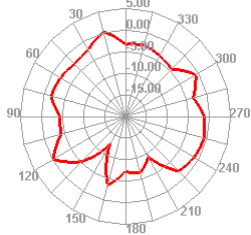
5850.000MHz



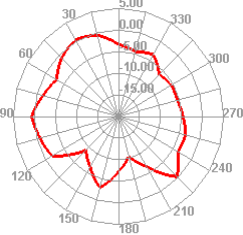
5850.000MHz H

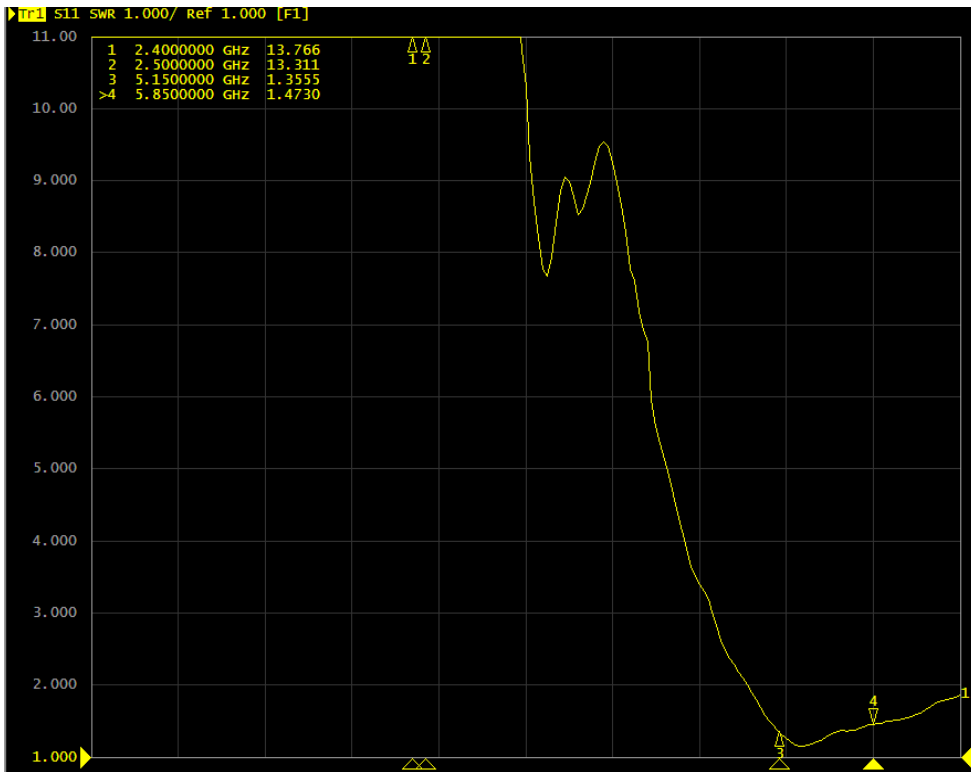


5850.000MHz E1

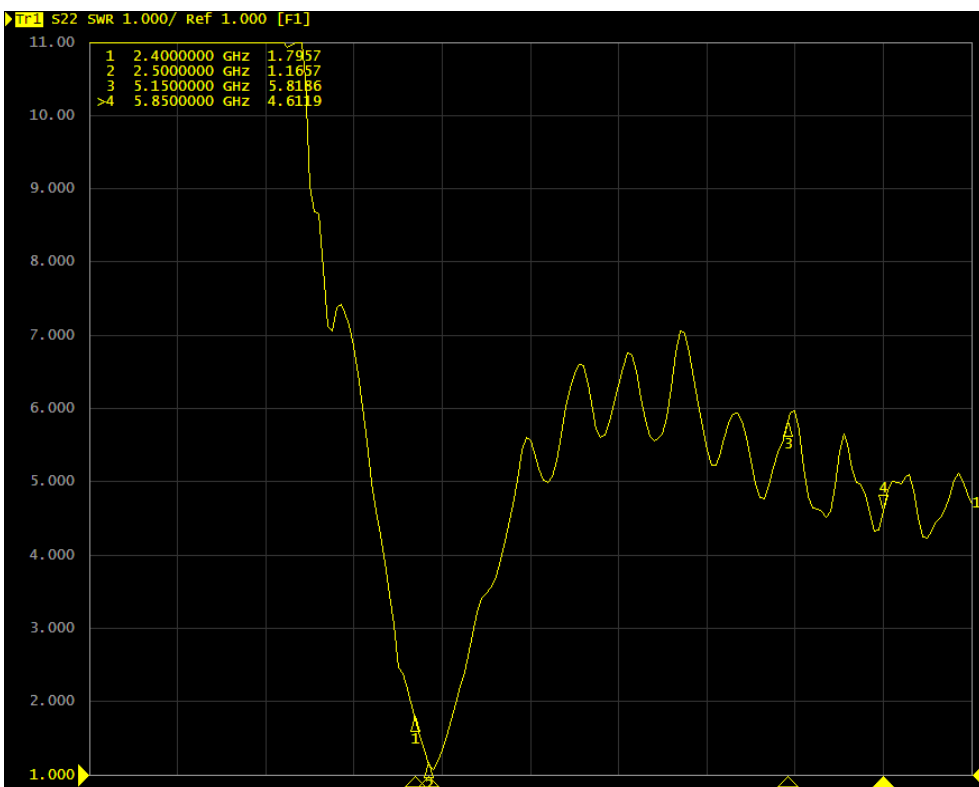


5850.000MHz E2

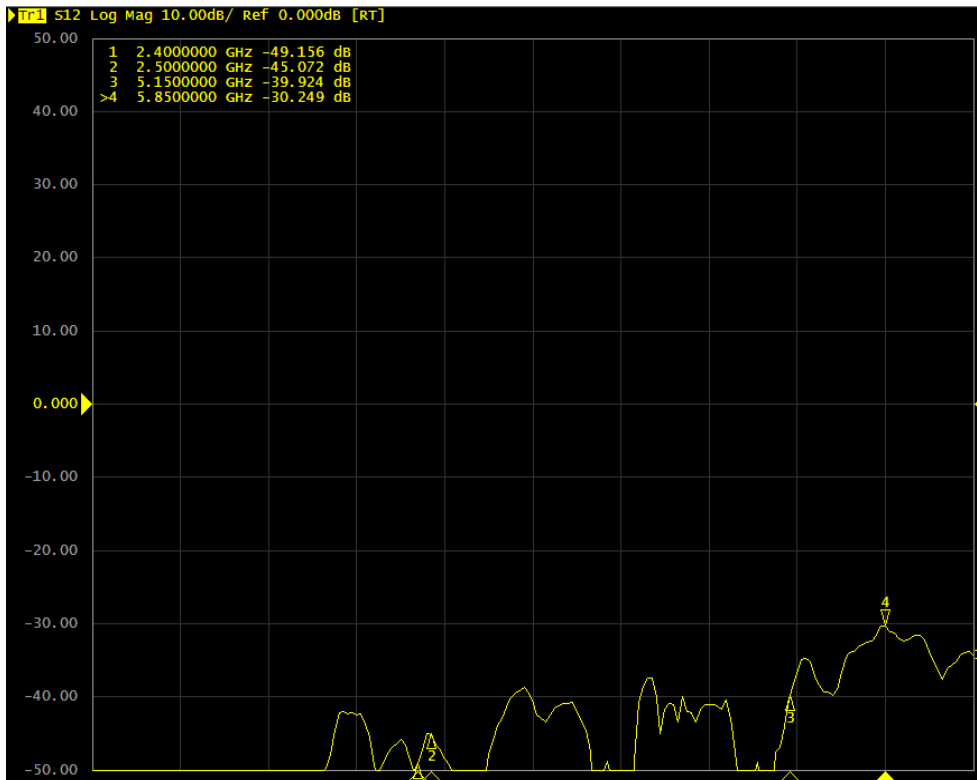




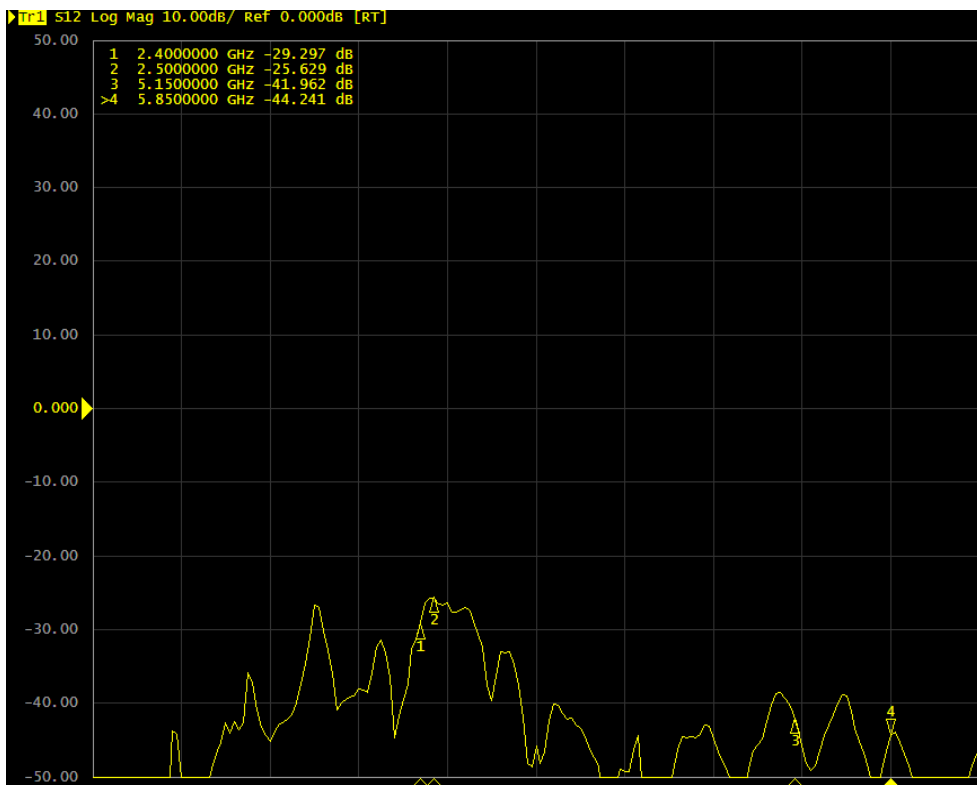
1 (5G)



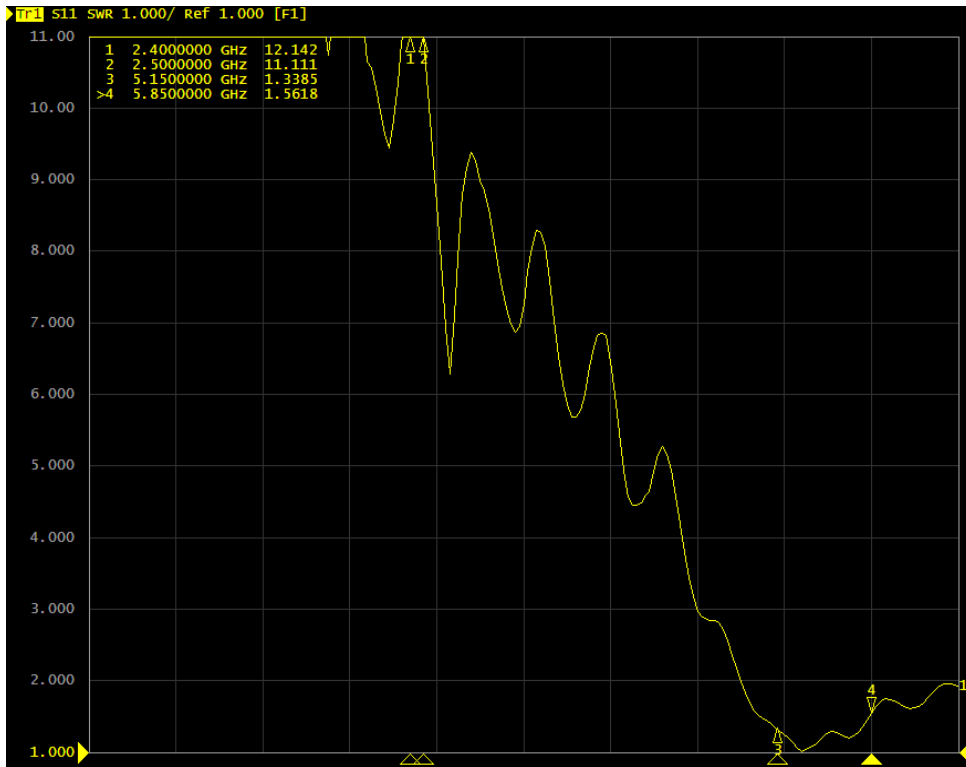
4 (2.4G)



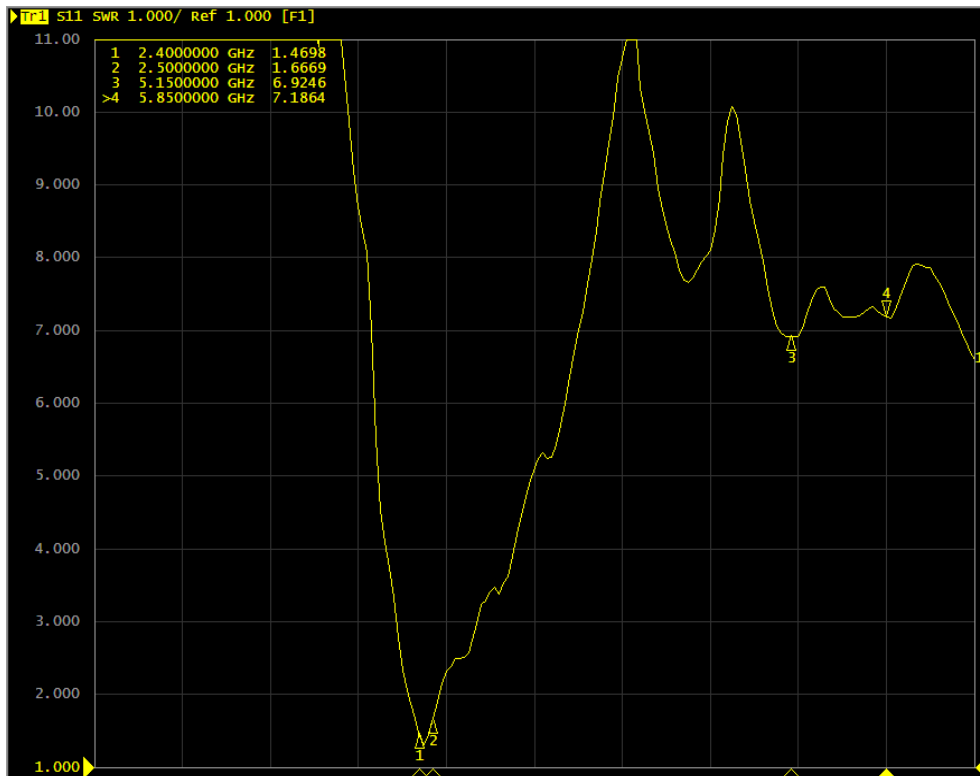
1/2 (5G) -S21



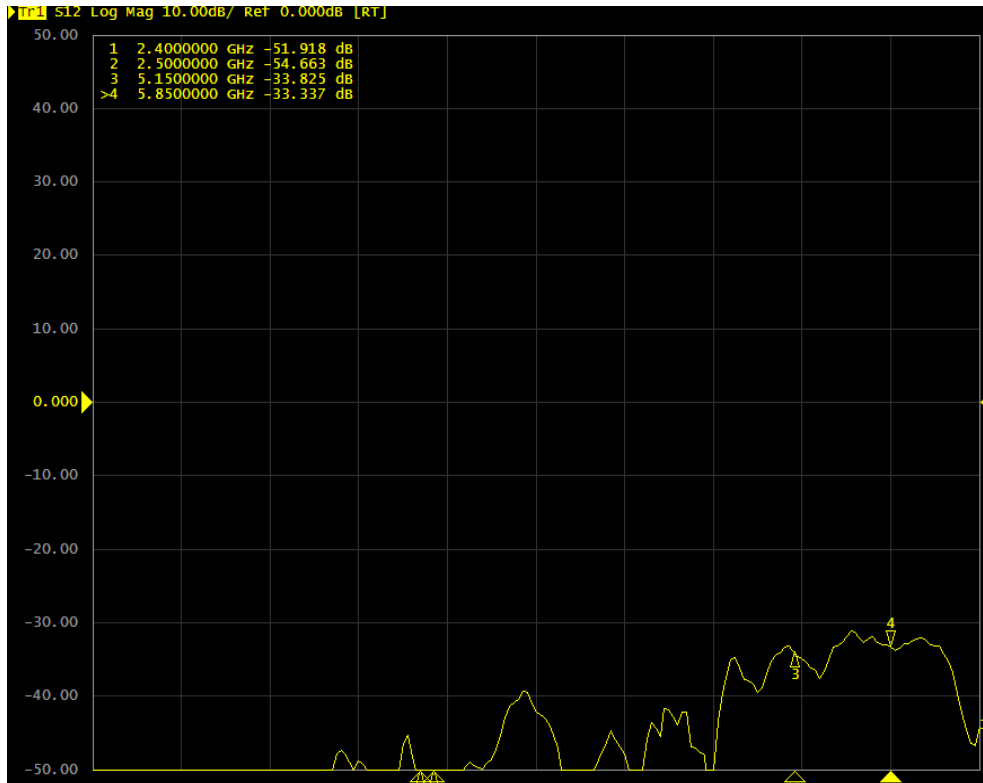
4/5 (2.4G) -S21



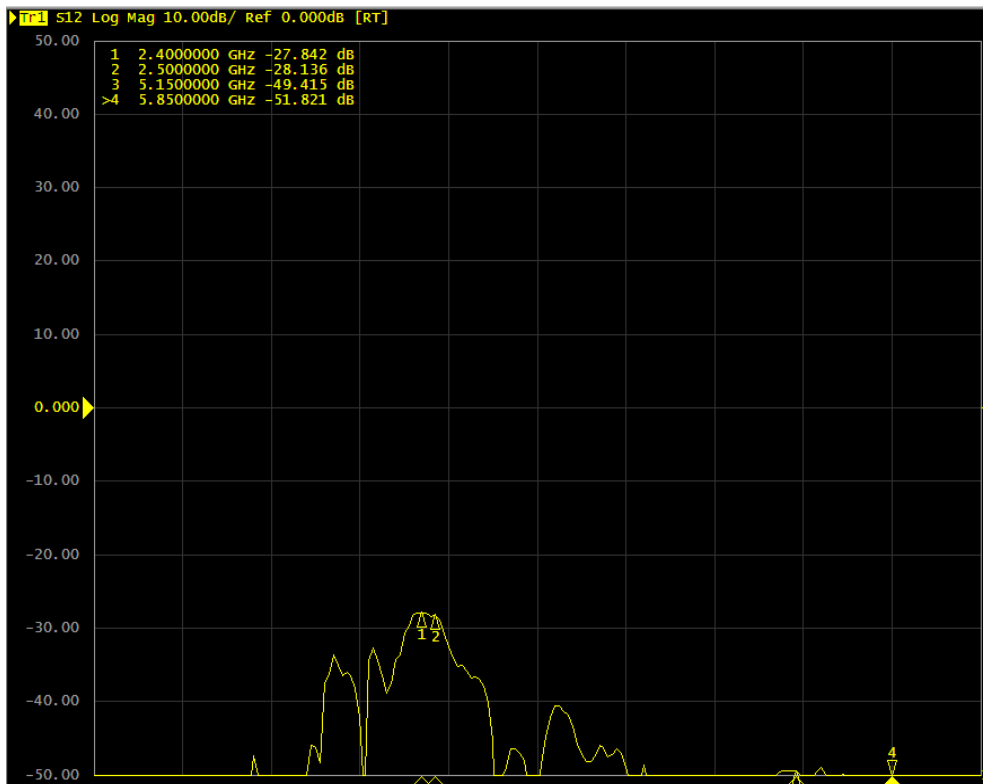
2 (5G)



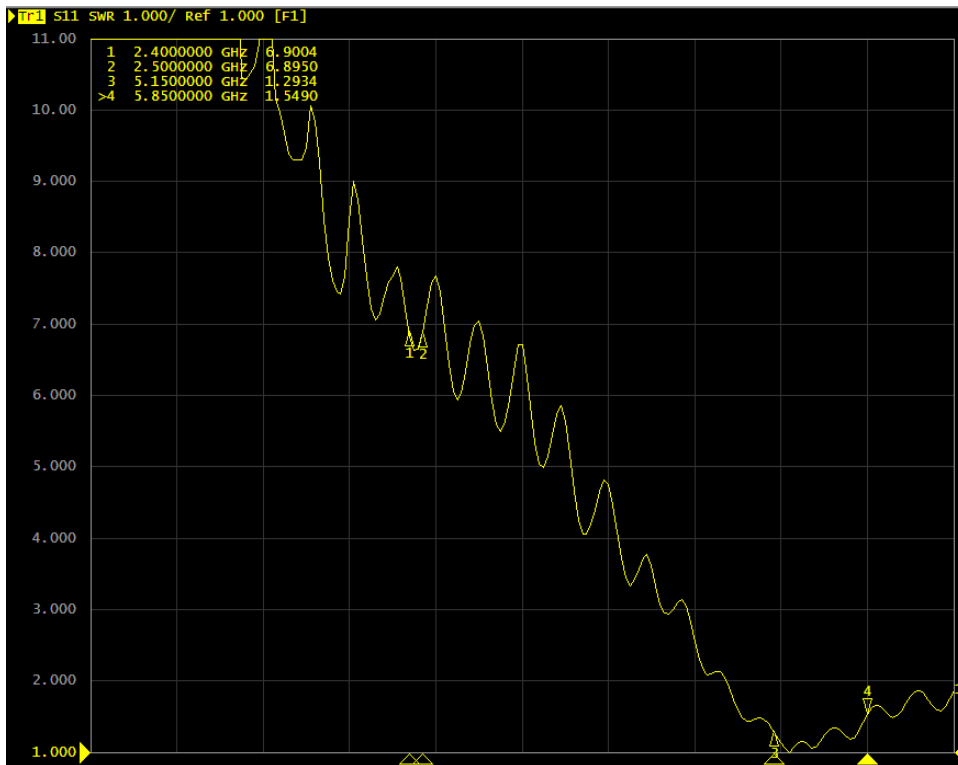
5 (2.4G)



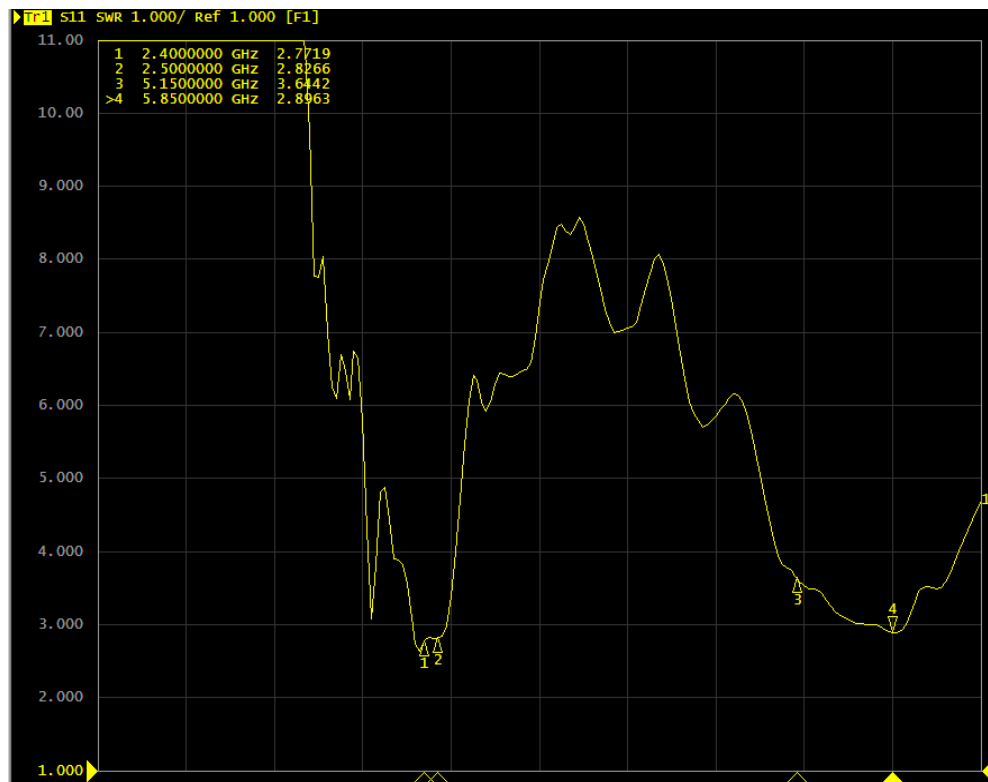
1/3 (5G) -S21



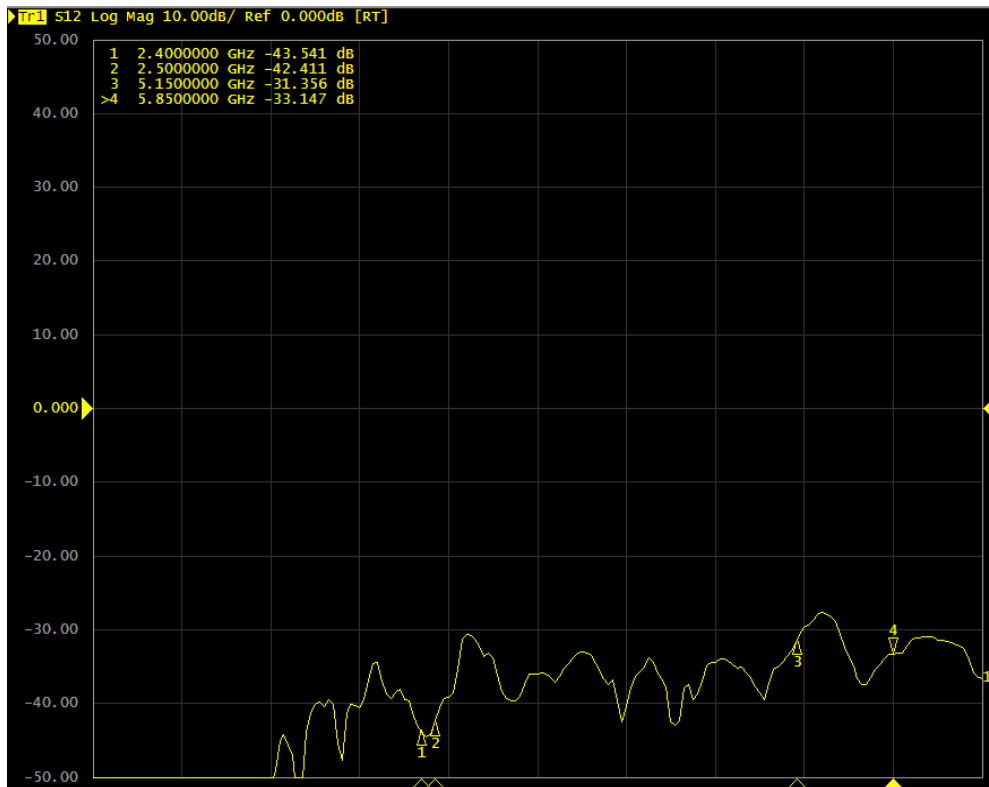
4/BT (2.4G) -S21



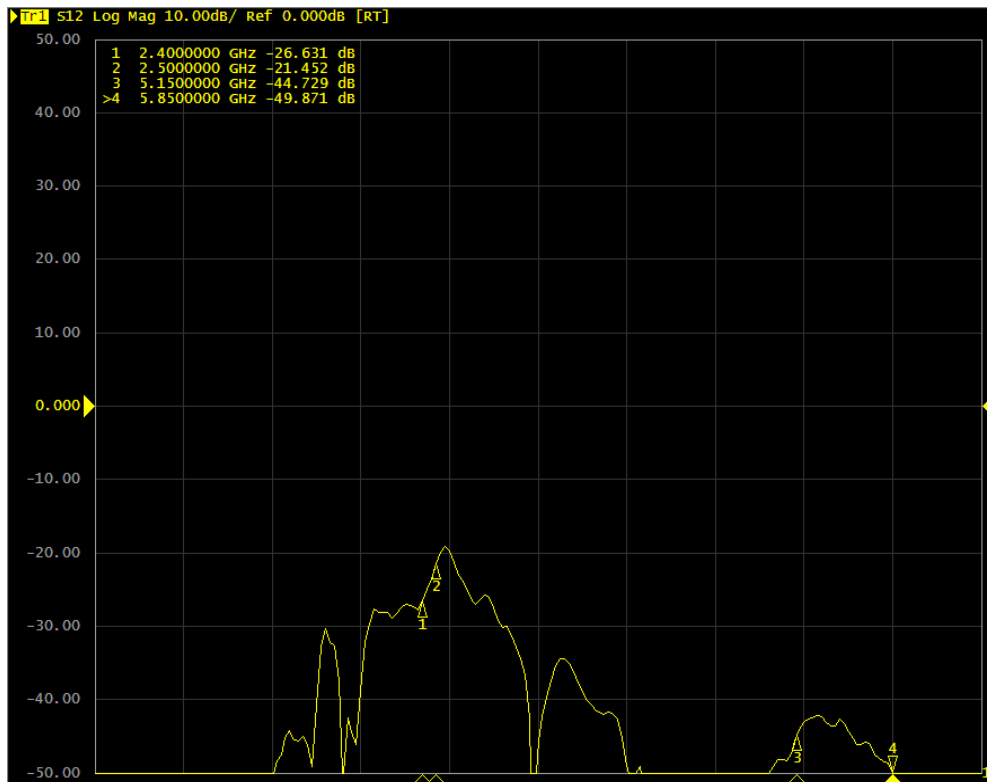
3 (5G)



BT



2/3 (5G) -S21

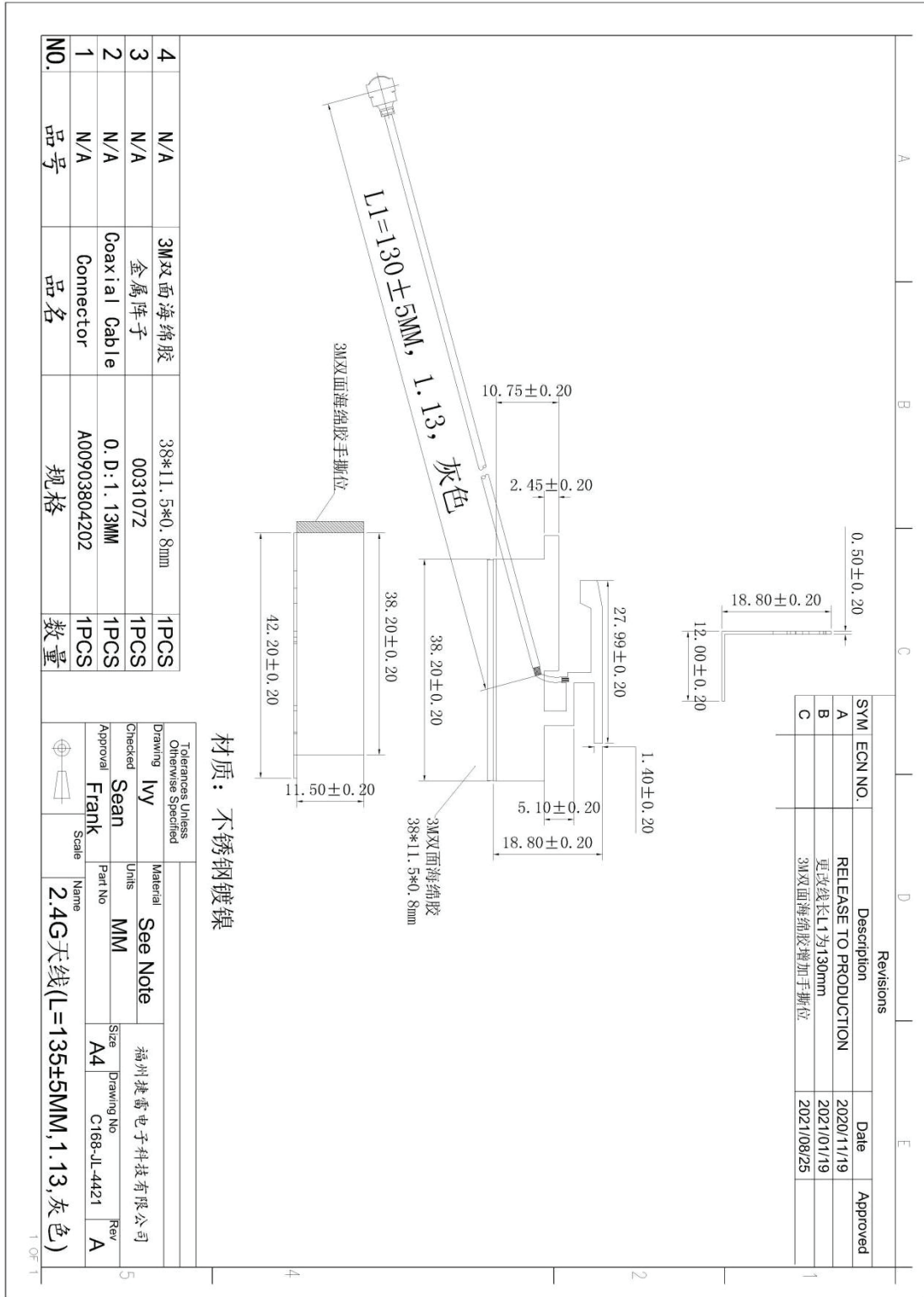


5/BT (2.4G) -S21



### 3. Mechanical Dimension Drawing

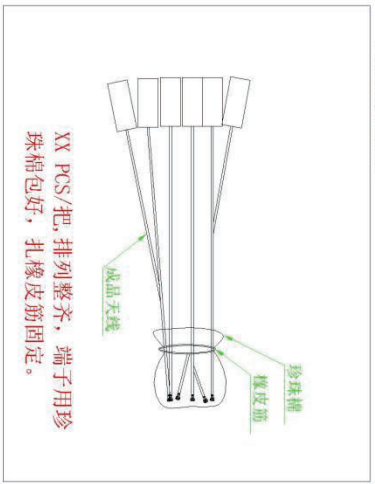
C168-JL-4421



# 4.Packing Specification

A
B
C
D
E

包装方式参照：

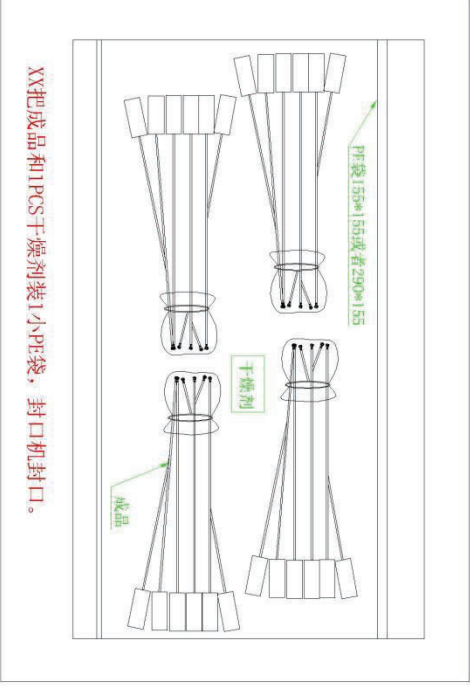


XX PCS/把, 排列整齐, 端子用珍珠棉包好, 扎橡皮筋固定。

Revisions

SYM	ECN NO.	Description	Date	Approved
A		新设	2020/09/09	

↓
↑



XX把成品和1PCS干燥剂装1小PE袋, 封口机封口。

备注：

技术要求：

1. 数量必须过称确认, 避免短装。
2. 线短的可以用同一张珍珠棉将产品都包起来。
3. PE袋口要封紧。
4. 首件需经组长确认, 操作员培训上岗。

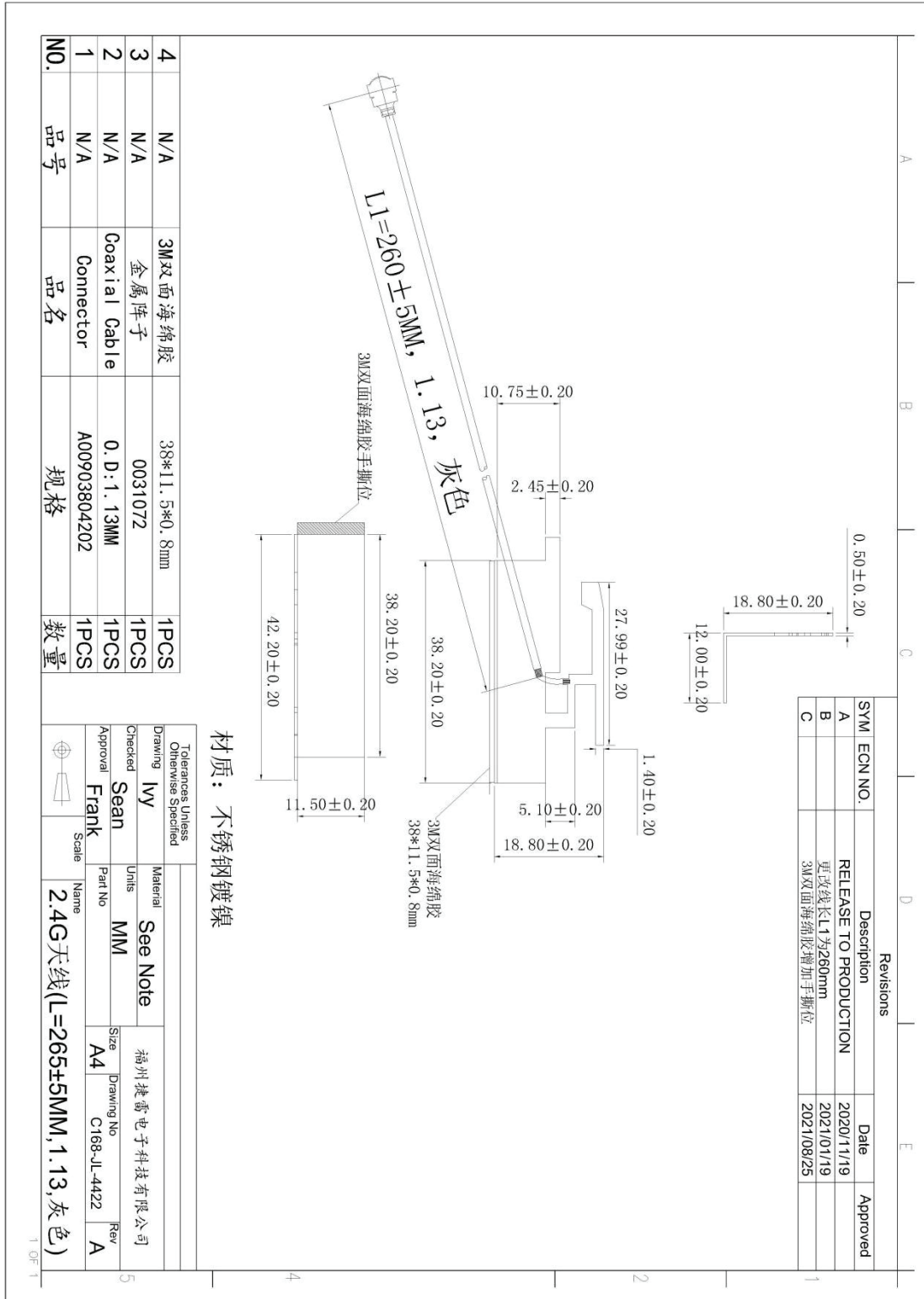
Tolerance Unless Otherwise Specified	
Drawing	Liya
Material	See Note
Checked	Wensen
Units	MM
Approval	Frank
Part No	A4
Size	A4
Drawing No	
Rev	A
Name	WIFI天线包装规范

1 OF 1
4
5

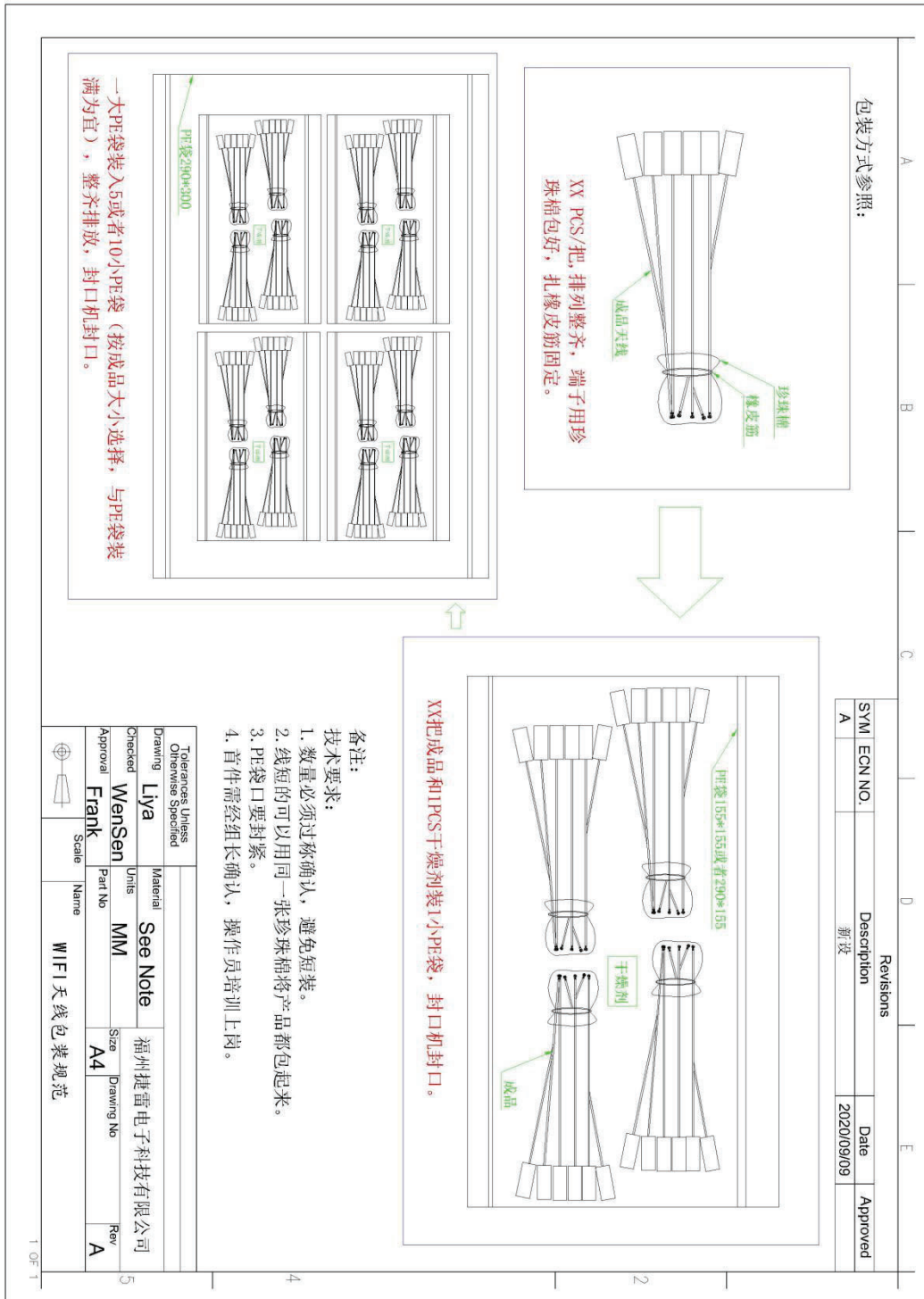
Packing 参照图

### 3. Mechanical Dimension Drawing

C168-JL-4422



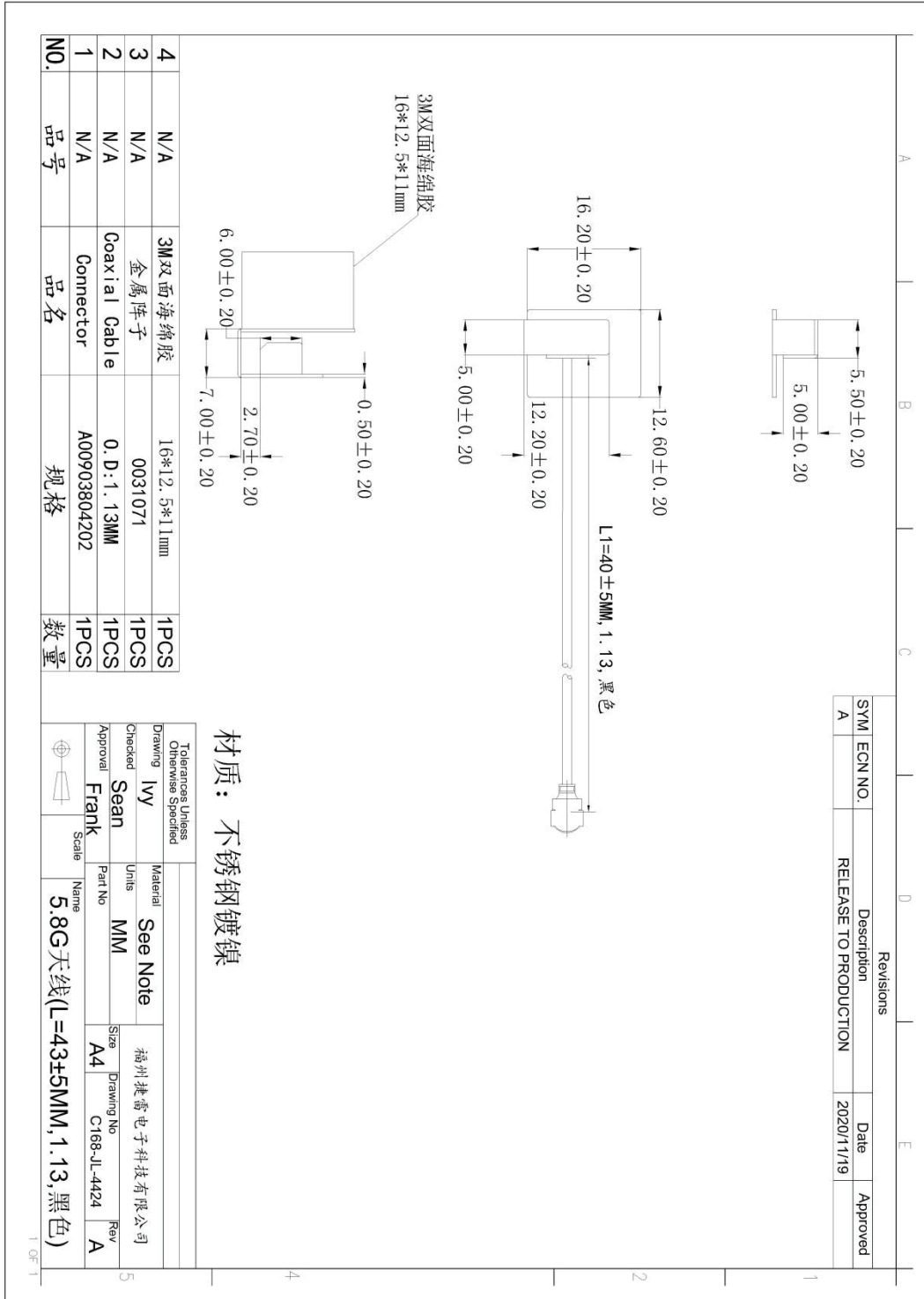
## 4.Packing Specification



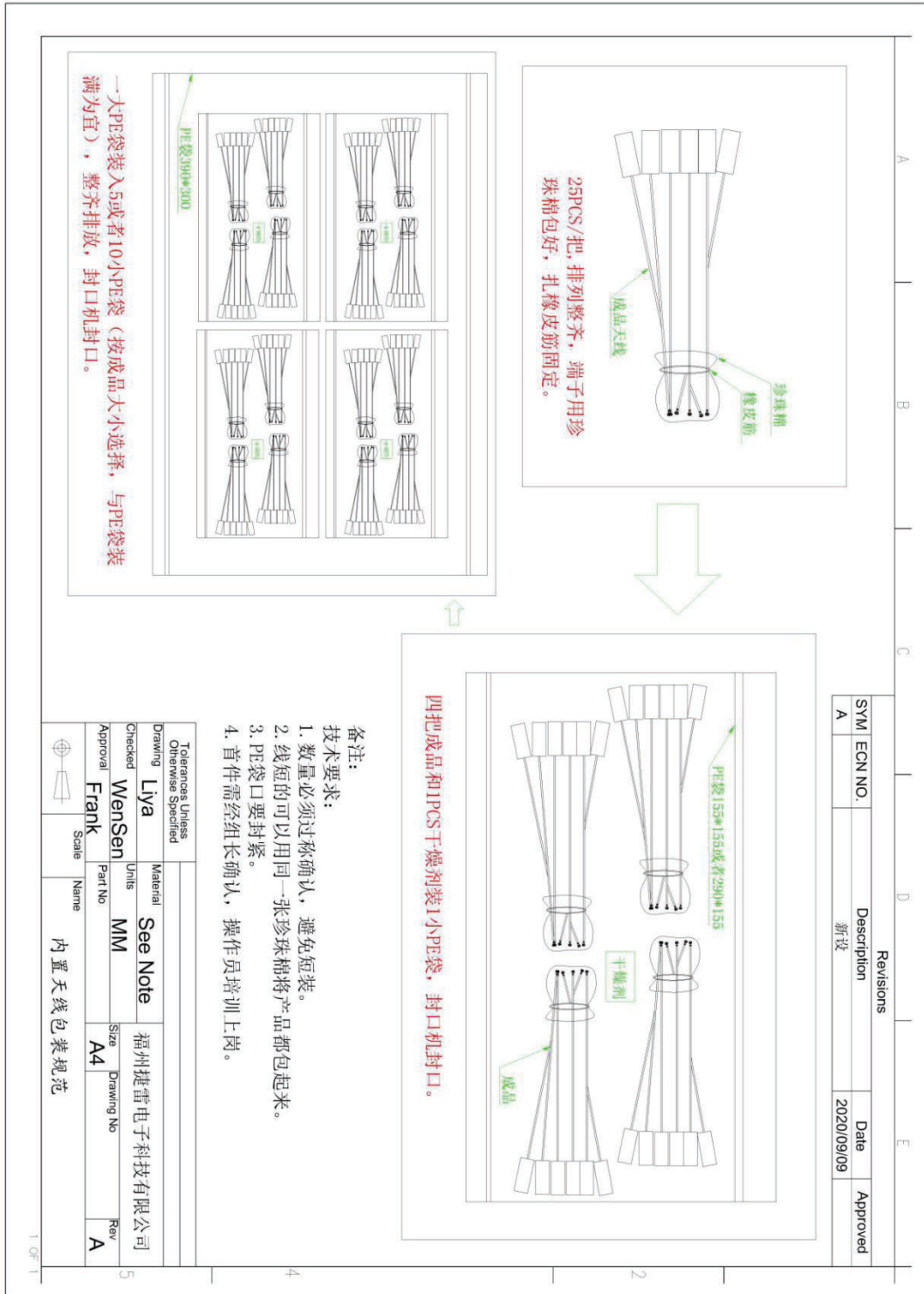
Packing 参照图

### 3. Mechanical Dimension Drawing

C168-JL-4424



## 4.Packing Specification

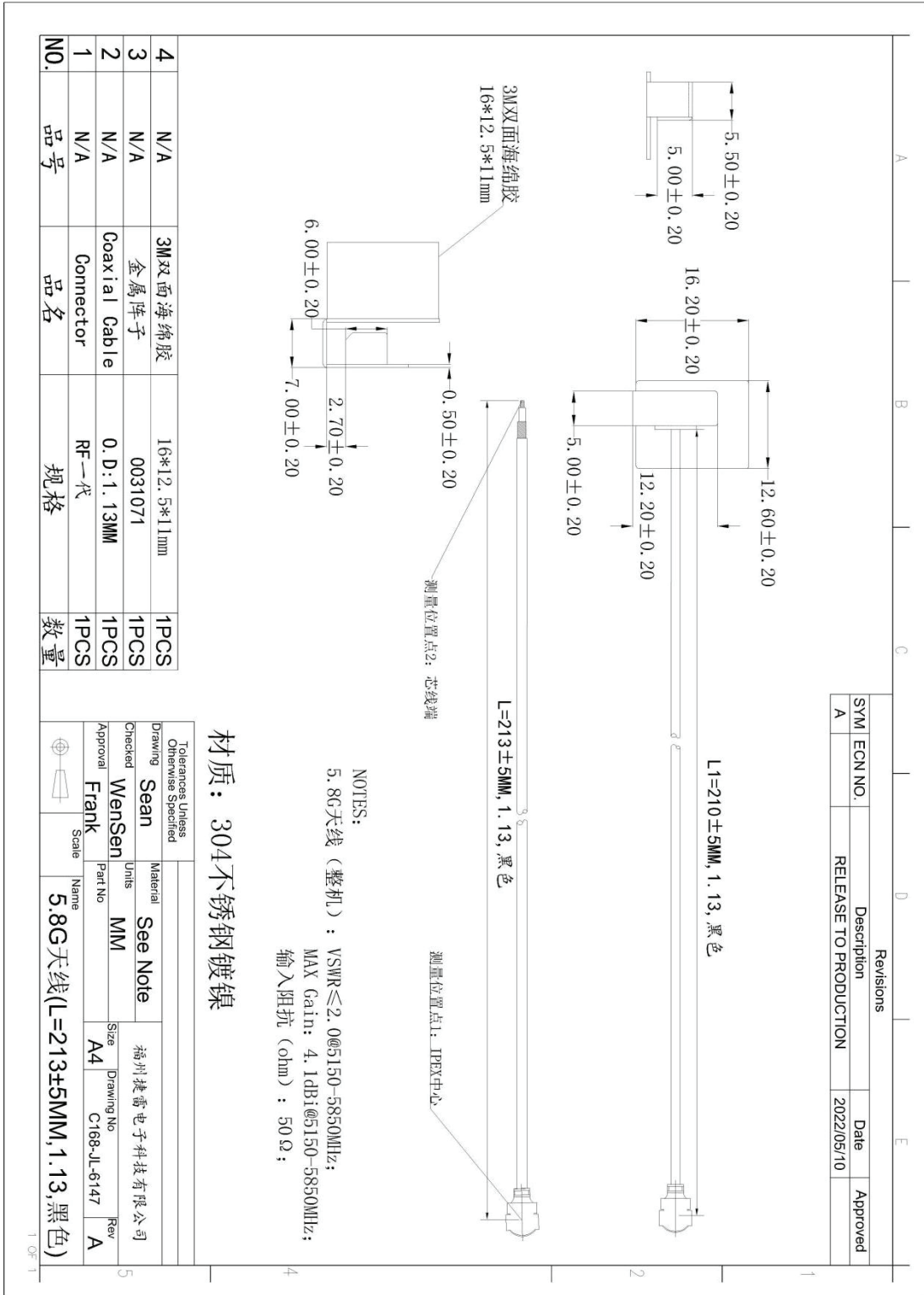


Packing 参照图

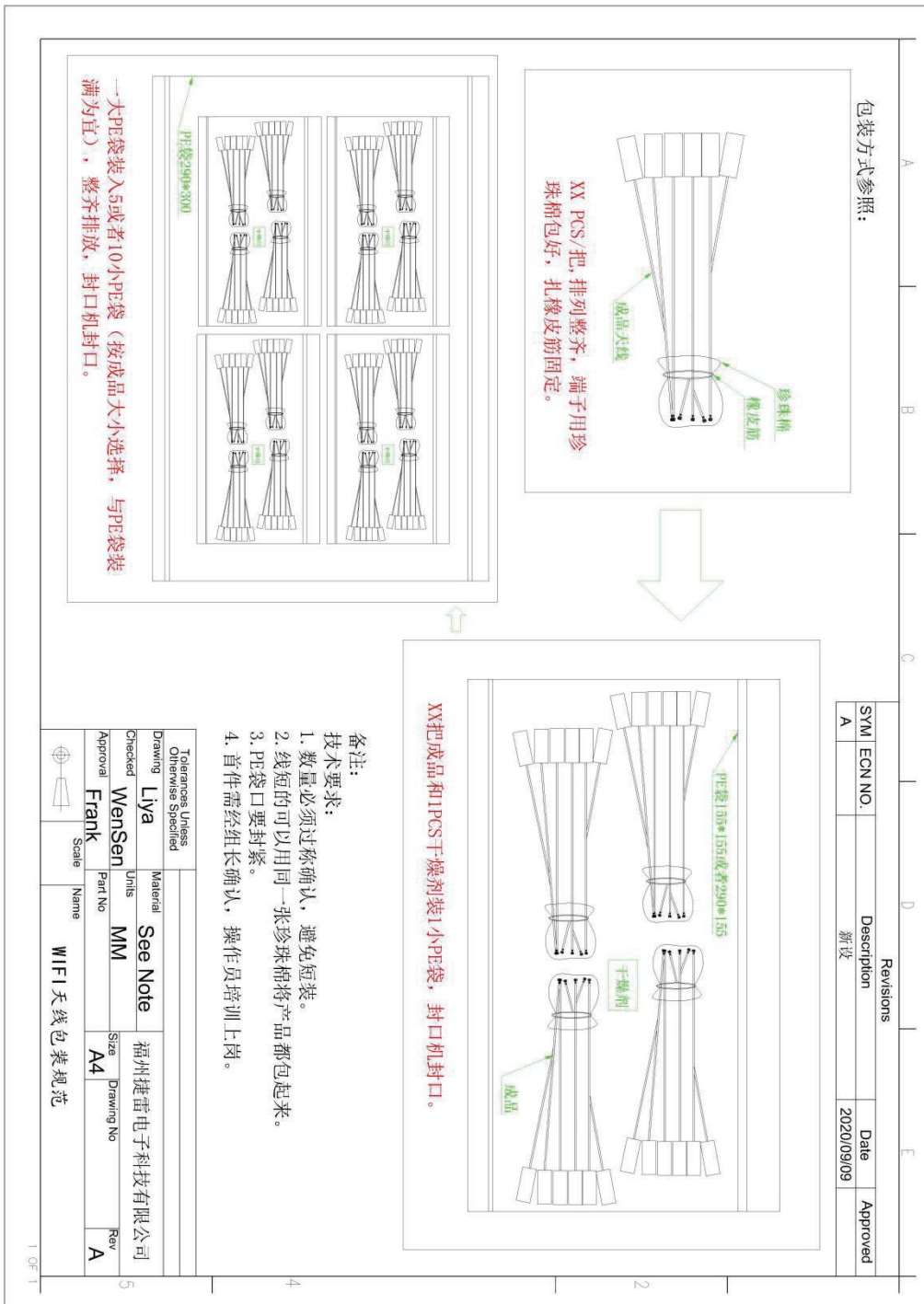


### 3. Mechanical Dimension Drawing

#### C168-JL-6147



## 4.Packing Specification

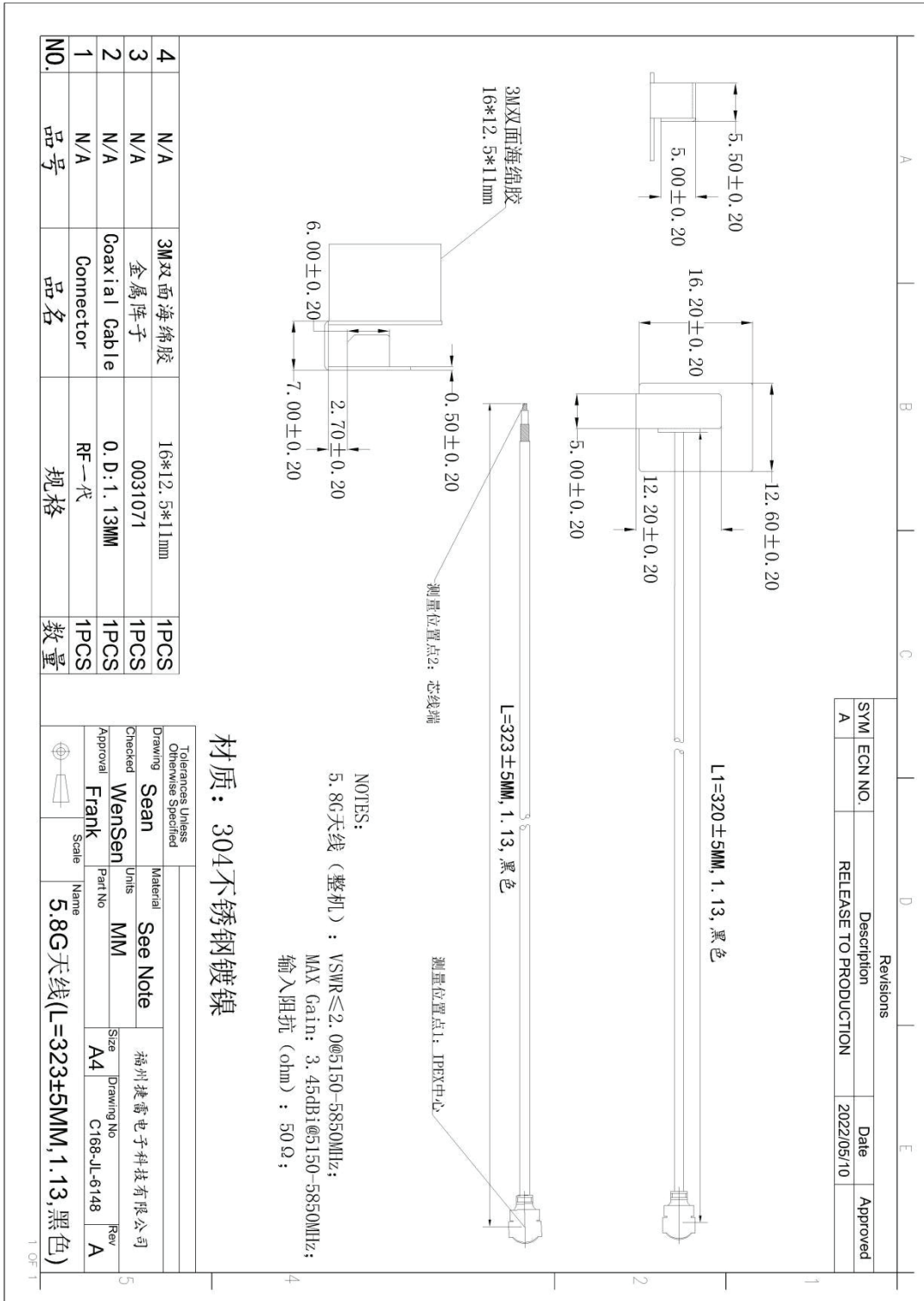


Packing 参照图

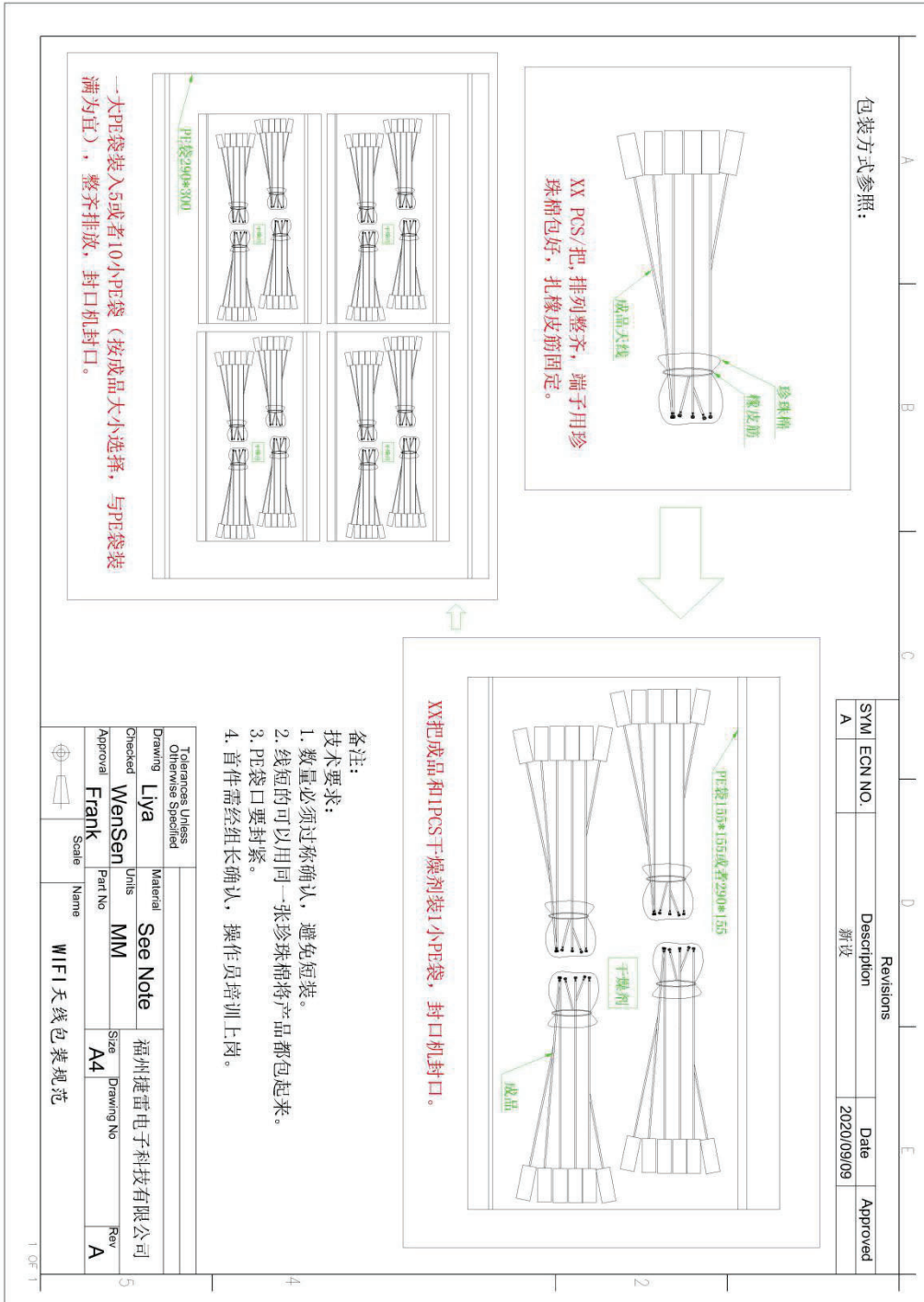


### 3. Mechanical Dimension Drawing

### C168-JL-6148



## 4.Packing Specification



Packing 参照图