

检测结果记录表

样品名称	RAP2261 (G)	样机型号		申请单编号	
检测依据	国标	样品数量	1台	样品编号	
检测项目	无源	检测设备	E5071C	检测条件	22.2°C / 43 %
检测目的					

检测结果记录

申请人/送样人	\	软件版本		硬件版本	—
样机信息 (含S/N号)			<p>H: xoy E1: xoz E2: zoy</p>		

备注说明

Freq (MHz)	Effi (%)	Max (dB)	Freq (MHz)	Effi (%)	Max (dB)	Freq (MHz)	Effi (%)	Max (dB)
2400	66.86	2.27	2400	52.38	1.41			
2410	67.04	2.36	2410	51.93	1.52			
2420	64.17	2.32	2420	51.49	1.65			
2430	68.13	2.75	2430	55.77	1.76			
2440	66.51	2.65	2440	55.14	1.5			
2450	64.58	2.6	2450	53.57	1.69			
2460	63.21	2.58	2460	53.23	1.65			
2470	67.33	2.71	2470	56.73	1.8			
2480	62.4	2.34	2480	53.25	1.69			
2490	60.07	2.08	2490	52.16	1.51			
2500	61.89	2.04	2500	54.79	1.95			

Ant1 (2.4G)      Ant2 (2.4G)

Freq (MHz)	Effi (%)	Max (dB)	Freq (MHz)	Effi (%)	Max (dB)	Freq (MHz)	Effi (%)	Max (dB)
5150	56.51	2.47	5150	45.48	1.73	5150	62.16	2.94
5160	54.72	2.72	5160	44.9	1.33	5160	62.78	3.5
5170	56.65	3.33	5170	44.42	1	5170	62.47	3.31
5180	55.93	2.91	5180	45.82	1.66	5180	63.42	2.82
5190	58.19	3.22	5190	47.03	1.84	5190	65.47	3.15
5200	53.43	2.82	5200	44.26	1.52	5200	61.26	2.71
5210	52.29	2.65	5210	41.61	1.29	5210	58.67	2.55
5220	51.94	2.49	5220	42.81	1.73	5220	59.49	2.42
5230	53.98	2.69	5230	45.27	1.83	5230	61.55	2.9
5240	50.92	2.81	5240	42.55	2.15	5240	57.18	2.54
5250	49.11	2.7	5250	42.93	1.39	5250	56.4	1.81
5260	52.78	2.84	5260	44.66	2.12	5260	58.03	2.54
5270	51.53	3.4	5270	43.77	1.77	5270	57.89	1.89
5280	48.18	2.44	5280	40.23	0.81	5280	53.72	2.08
5290	47.04	2.24	5290	39.98	1.07	5290	53.18	1.7
5300	50.69	2.89	5300	42.87	1.58	5300	56.44	1.95
5310	50.36	2.4	5310	42.69	1.53	5310	55.84	1.86
5320	46.8	1.91	5320	38.69	1.05	5320	52.35	1.73
5330	47.51	2.06	5330	39.68	1.48	5330	52.52	1.94
5340	51.36	2.19	5340	42.79	1.53	5340	57.1	1.98
5350	50.89	2.18	5350	42.76	1.77	5350	57.23	1.96
5360	49.06	2.12	5360	41.06	1.6	5360	54.54	1.97
5370	48.57	2.37	5370	41.01	1.77	5370	54.32	2.92
5380	50.46	2.04	5380	41.49	1.93	5380	54.18	2.36
5390	49.39	2.57	5390	40.53	1.19	5390	54.61	3.49
5400	50.85	2.09	5400	41.29	1.7	5400	55.31	2.38
5410	52.05	2.24	5410	42.3	1.29	5410	57.6	2.35
5420	53.36	2.43	5420	43.14	1.87	5420	59	2.48
5430	53.5	2.55	5430	43.03	1.68	5430	58.83	3
5440	54.04	3.25	5440	42.83	1.66	5440	58.65	2.48
5450	54.11	2.97	5450	43.74	1.67	5450	59.52	2.4
5460	54.44	2.78	5460	43.32	1.25	5460	59.82	3.14
5470	54.14	3.1	5470	44.91	1.78	5470	59.94	2.2
5480	55.61	3.17	5480	44.89	1.7	5480	60.04	2.31
5490	56.07	3.21	5490	45.51	2.96	5490	61.82	2.35
5500	55.53	3.05	5500	46.97	1.98	5500	62.06	2.9
5510	58.36	3.05	5510	47.24	1.79	5510	64.6	3.22
5520	58.59	2.85	5520	47.96	1.79	5520	65.2	2.85
5530	56.2	2.65	5530	46.03	1.46	5530	62.37	2.61
5540	55.85	3.51	5540	45.21	1.37	5540	60.19	2.42
5550	55.8	2.73	5550	46.32	1.53	5550	60.48	3.14
5560	55.28	2.86	5560	45.62	1.36	5560	62	2.85
5570	52.15	2.49	5570	43.17	0.75	5570	57.45	2.12
5580	52.66	2.33	5580	44.01	1.11	5580	58.35	2.09
5590	56.54	4.1	5590	46.27	2.3	5590	61.81	2.29
5600	55.16	2.55	5600	46.1	1.56	5600	60.36	2.22
5610	49.99	2.5	5610	42.52	1.46	5610	56.1	1.66
5620	53.76	2.93	5620	44.17	1.65	5620	58.54	2.33
5630	54.65	3.81	5630	45.15	1.88	5630	61	2.48
5640	54.76	2.7	5640	44.38	2.35	5640	59.35	2.16
5650	50.53	2.12	5650	41.39	1.65	5650	55.72	2.49
5660	53.52	2.68	5660	43.07	1.9	5660	58.05	1.76
5670	55.76	3.08	5670	45.51	1.55	5670	59.22	2.03
5680	56.4	2.71	5680	45.45	1.94	5680	61.49	2.25
5690	52.37	1.94	5690	41.58	1.4	5690	58.13	2.23
5700	55.96	2.61	5700	45.01	1.48	5700	61.74	2.12
5710	58.71	2.96	5710	45.63	1.16	5710	63.65	2.8
5720	55.89	1.92	5720	46.56	1.17	5720	61.5	2.68
5730	56.57	2.26	5730	47.31	1.19	5730	62.61	2.69
5740	59.51	2.61	5740	48.38	2.23	5740	65.31	3.08
5750	60.79	3.2	5750	47.39	1.27	5750	64.9	3.05



5760	58.95	2.63	5760	47.07	2.5	5760	65.01	3.17
5770	59.25	2.99	5770	47.54	1.99	5770	65.18	3.05
5780	60.38	2.76	5780	49.2	1.55	5780	68.6	3.47
5790	59.99	2.59	5790	47.63	1.64	5790	66.23	3.32
5800	59.14	2.57	5800	48.03	1.52	5800	66.46	3.17
5810	57.53	2.29	5810	48.18	1.8	5810	65.94	3.03
5820	56.87	2.41	5820	47.23	1.67	5820	65.47	3.25
5830	58.1	2.6	5830	48.46	2.11	5830	63.97	2.66
5840	53.76	2.44	5840	45.34	2.21	5840	61.86	2.73
5850	53.16	1.86	5850	44.68	1.94	5850	58.55	2.82
SW2 (5G)			SW3 (5G)			SW4 (5G)		
检测人员/日期			Sean/20220514			审核/日期 Wensen/20220514		

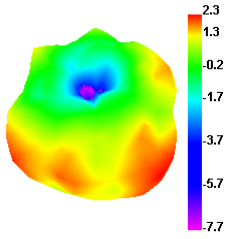
Manufacturer: Fuzhou JieLei Electronic Technology Co.,Ltd.

Address: C1-1425, Fuli Center, Taijiang District, Fuzhou City, Fujian Province

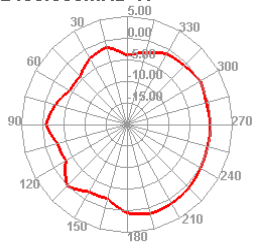
Part No.:NDS-2.4G ANT, NDS-5.8G ANT

JL P/N:C168-JL-4426, C168-JL-6154, C168-JL-4427, C168-JL-6149, C168-JL-6153

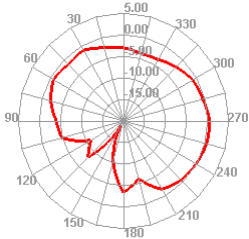
2400.000MHz



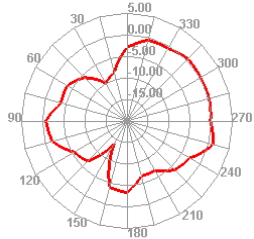
2400.000MHz H



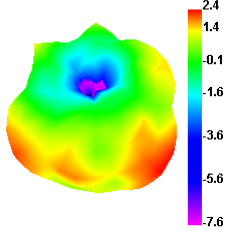
2400.000MHz E1



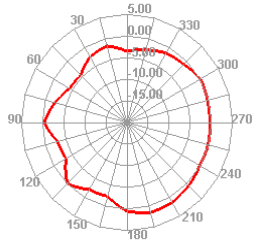
2400.000MHz E2



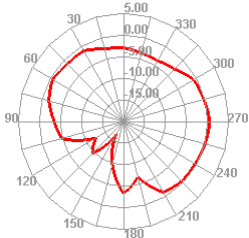
2410.000MHz



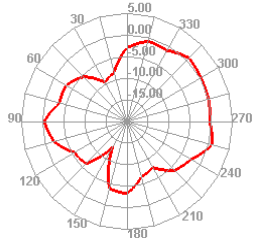
2410.000MHz H



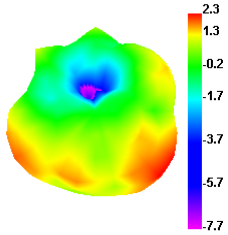
2410.000MHz E1



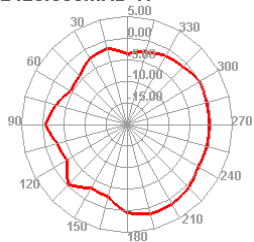
2410.000MHz E2



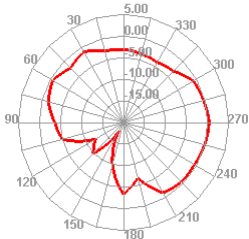
2420.000MHz



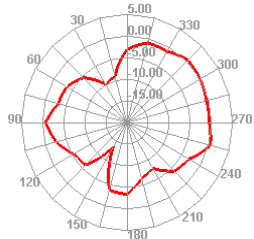
2420.000MHz H



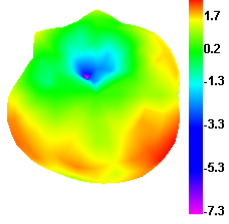
2420.000MHz E1



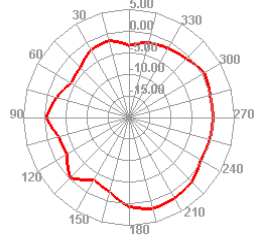
2420.000MHz E2



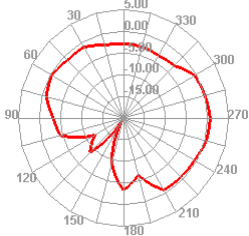
2430.000MHz



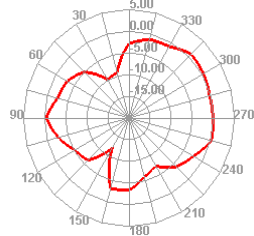
2430.000MHz H



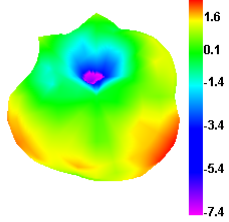
2430.000MHz E1



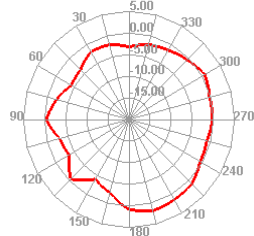
2430.000MHz E2



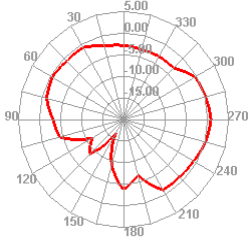
2440.000MHz



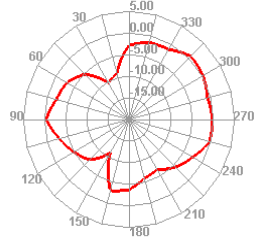
2440.000MHz H



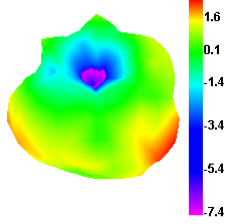
2440.000MHz E1



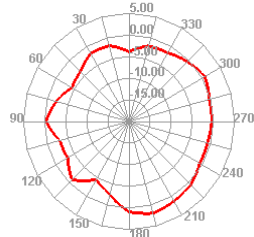
2440.000MHz E2



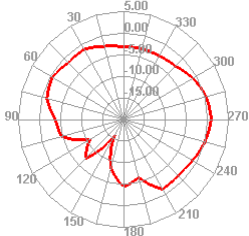
2450.000MHz



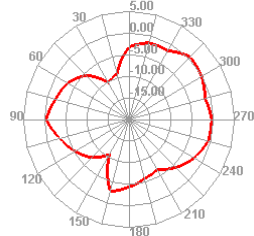
2450.000MHz H



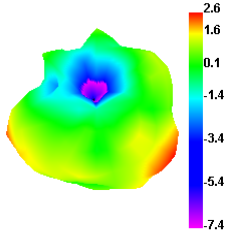
2450.000MHz E1



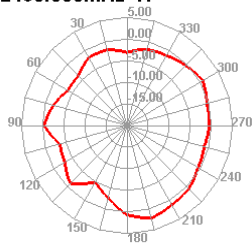
2450.000MHz E2



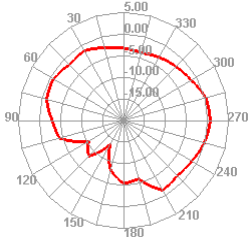
2460.000MHz



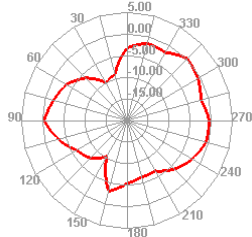
2460.000MHz H



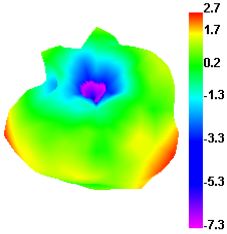
2460.000MHz E1



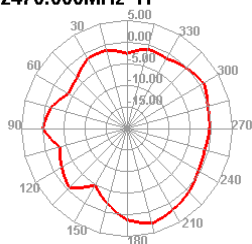
2460.000MHz E2



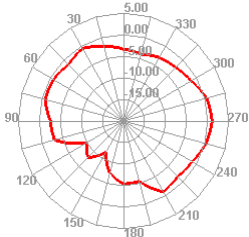
2470.000MHz



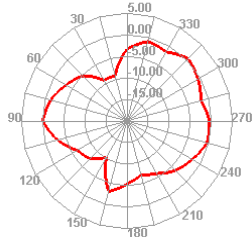
2470.000MHz H



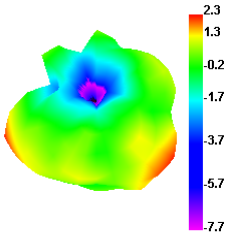
2470.000MHz E1



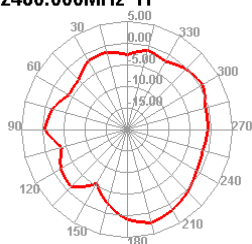
2470.000MHz E2



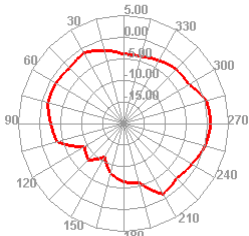
2480.000MHz



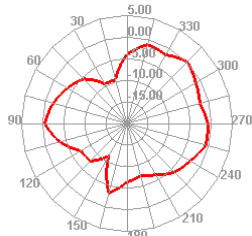
2480.000MHz H



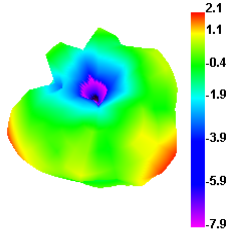
2480.000MHz E1



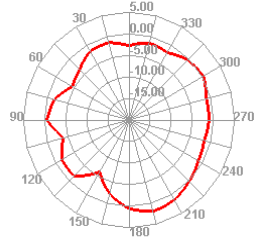
2480.000MHz E2



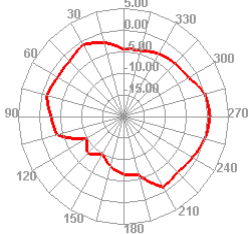
2490.000MHz



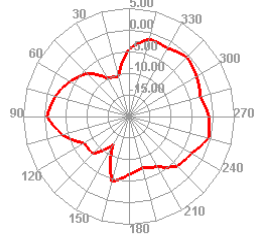
2490.000MHz H



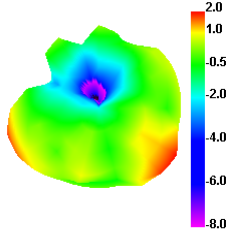
2490.000MHz E1



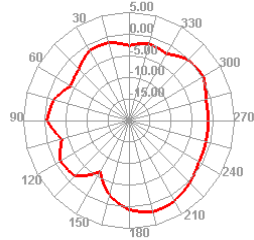
2490.000MHz E2



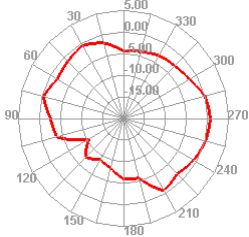
2500.000MHz



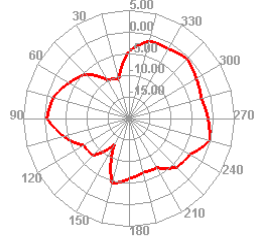
2500.000MHz H



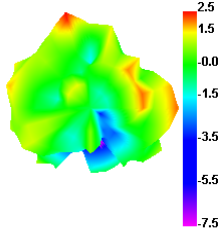
2500.000MHz E1



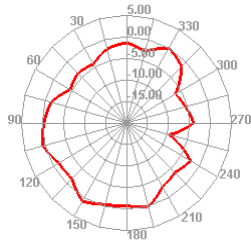
2500.000MHz E2



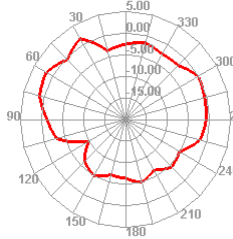
5150.000MHz



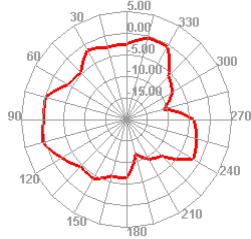
5150.000MHz H



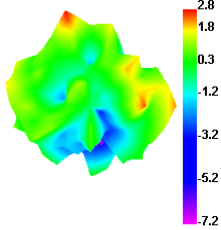
5150.000MHz E1



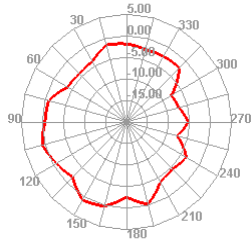
5150.000MHz E2



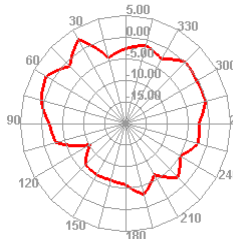
5200.000MHz



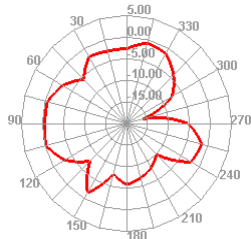
5200.000MHz H



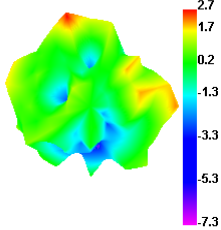
5200.000MHz E1



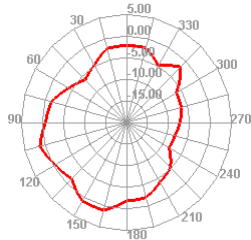
5200.000MHz E2



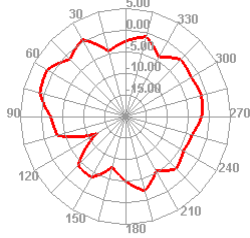
5250.000MHz



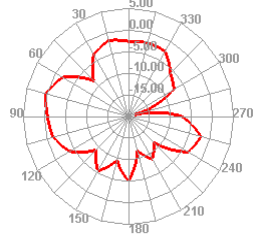
5250.000MHz H



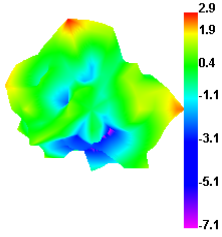
5250.000MHz E1



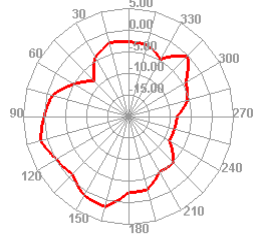
5250.000MHz E2



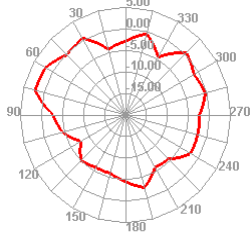
5300.000MHz



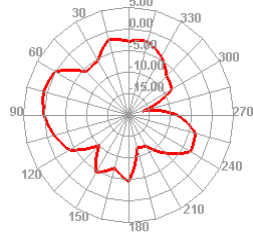
5300.000MHz H



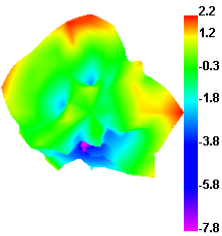
5300.000MHz E1



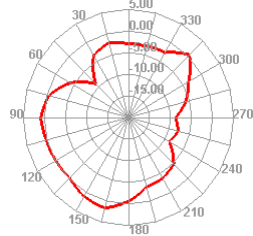
5300.000MHz E2



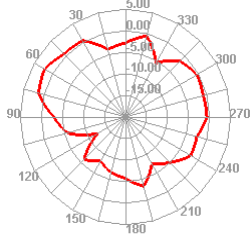
5350.000MHz



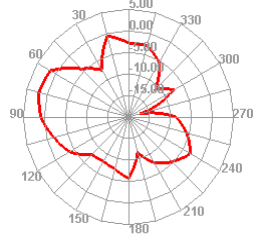
5350.000MHz H



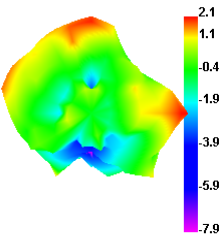
5350.000MHz E1



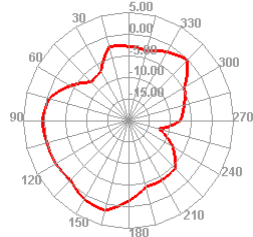
5350.000MHz E2



5400.000MHz

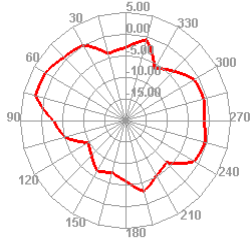


5400.000MHz H

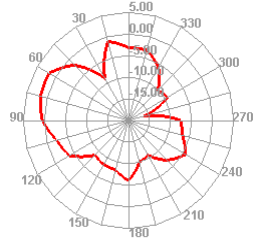




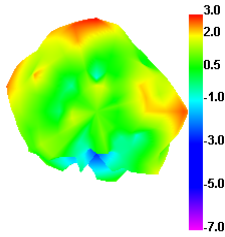
5400.000MHz E1



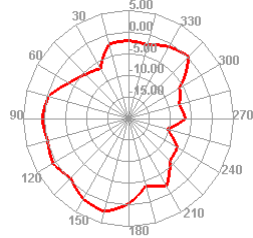
5400.000MHz E2



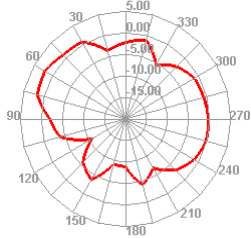
5450.000MHz



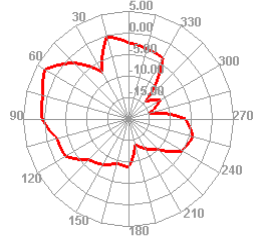
5450.000MHz H



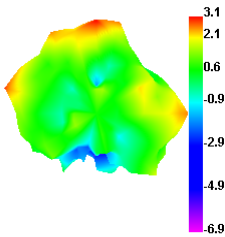
5450.000MHz E1



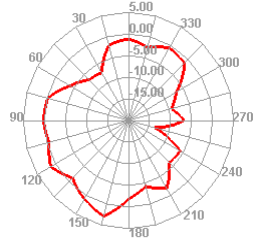
5450.000MHz E2



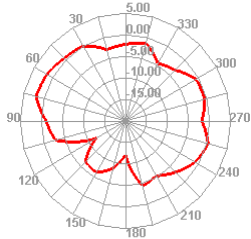
5500.000MHz



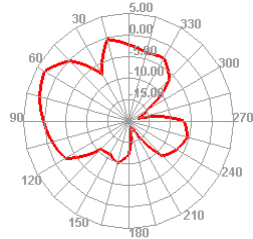
5500.000MHz H



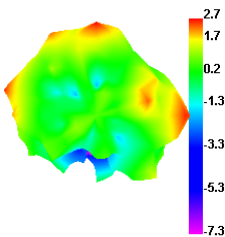
5500.000MHz E1



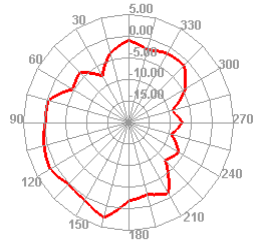
5500.000MHz E2



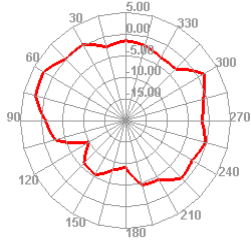
5550.000MHz



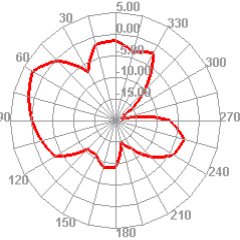
5550.000MHz H



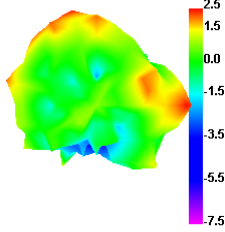
5550.000MHz E1



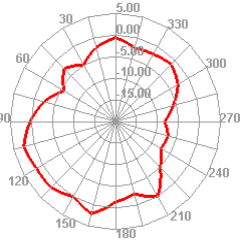
5550.000MHz E2



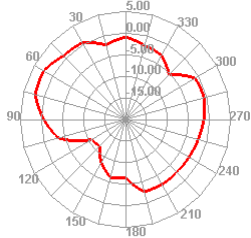
5600.000MHz



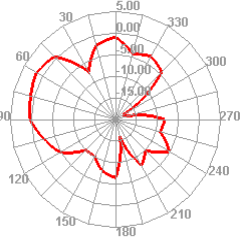
5600.000MHz H



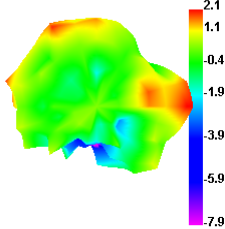
5600.000MHz E1



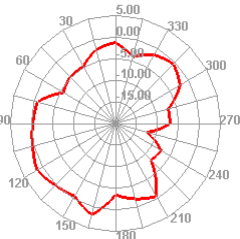
5600.000MHz E2



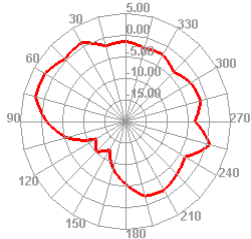
5650.000MHz



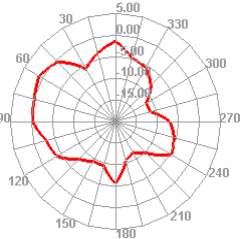
5650.000MHz H



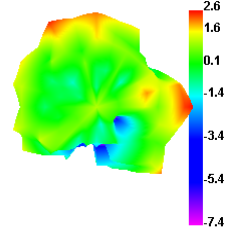
5650.000MHz E1



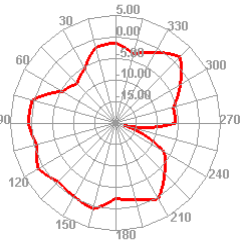
5650.000MHz E2



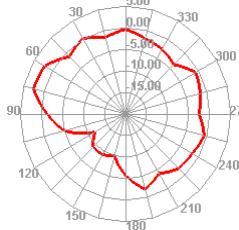
5700.000MHz



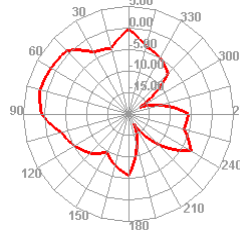
5700.000MHz H



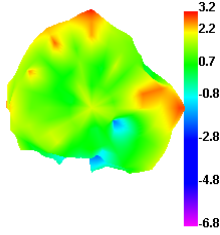
5700.000MHz E1



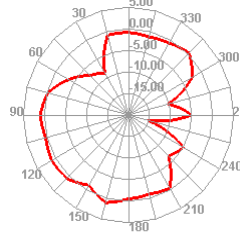
5700.000MHz E2



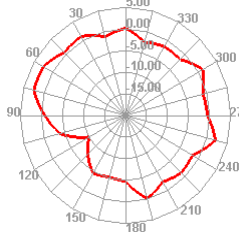
5750.000MHz



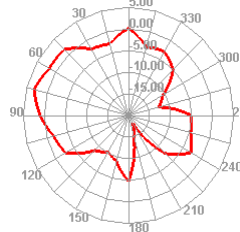
5750.000MHz H



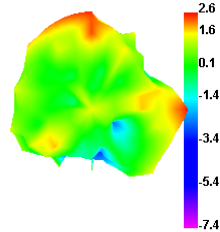
5750.000MHz E1



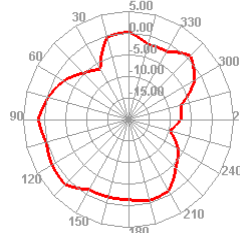
5750.000MHz E2



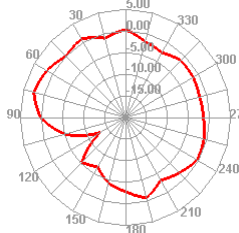
5800.000MHz



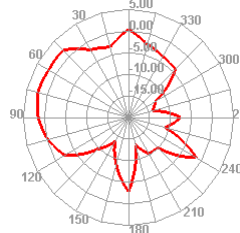
5800.000MHz H



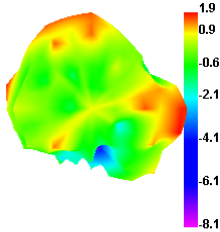
5800.000MHz E1



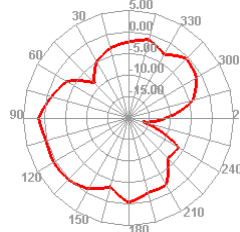
5800.000MHz E2



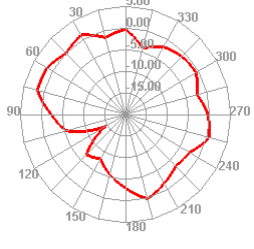
5850.000MHz



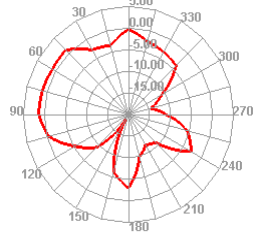
5850.000MHz H



5850.000MHz E1

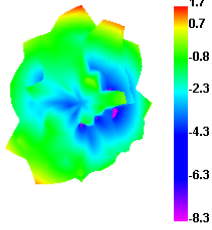


5850.000MHz E2

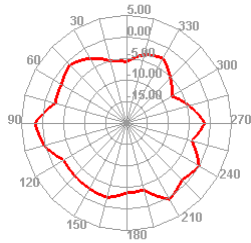




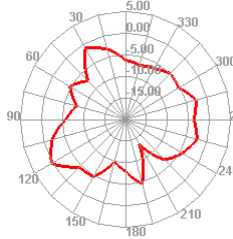
5150.000MHz



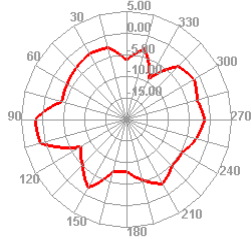
5150.000MHz H



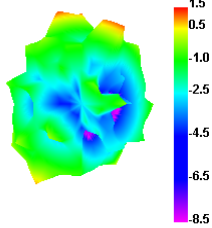
5150.000MHz E1



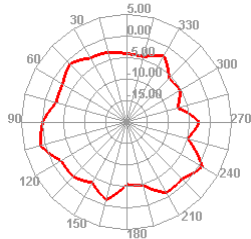
5150.000MHz E2



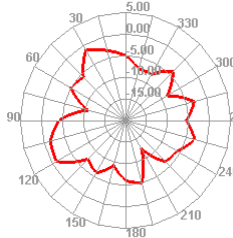
5200.000MHz



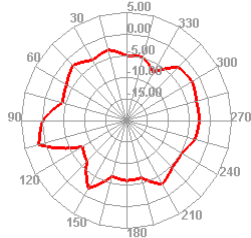
5200.000MHz H



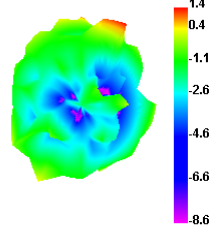
5200.000MHz E1



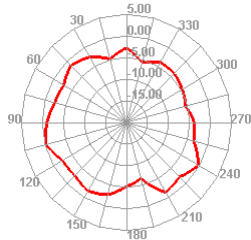
5200.000MHz E2



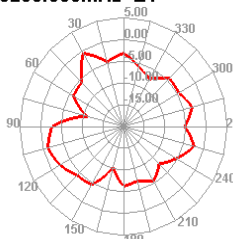
5250.000MHz



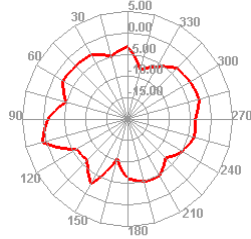
5250.000MHz H



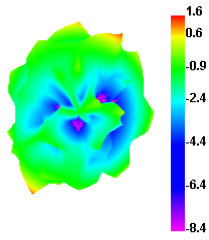
5250.000MHz E1



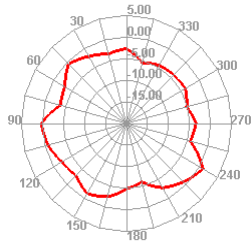
5250.000MHz E2



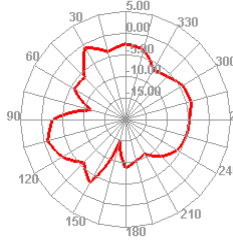
5300.000MHz



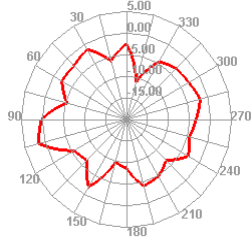
5300.000MHz H



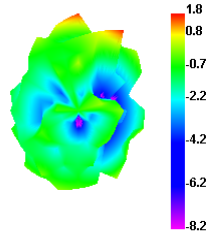
5300.000MHz E1



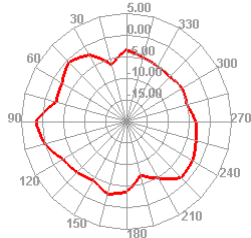
5300.000MHz E2



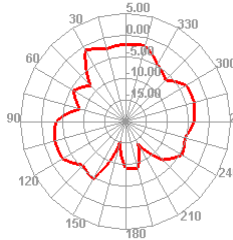
5350.000MHz



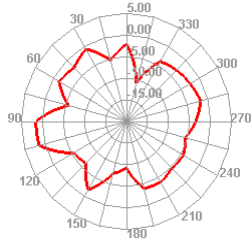
5350.000MHz H



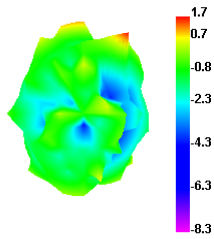
5350.000MHz E1



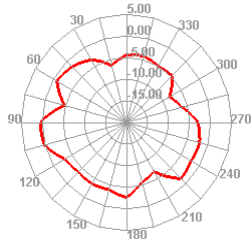
5350.000MHz E2



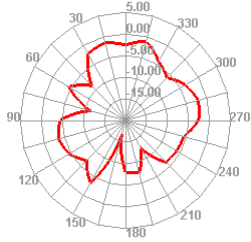
5400.000MHz



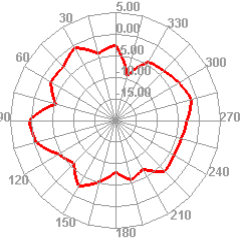
5400.000MHz H



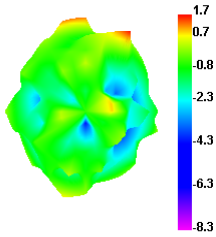
5400.000MHz E1



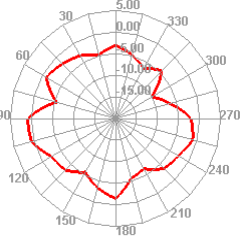
5400.000MHz E2



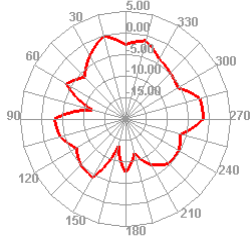
5450.000MHz



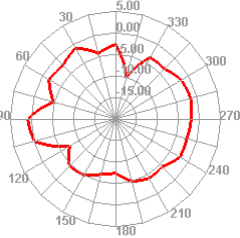
5450.000MHz H



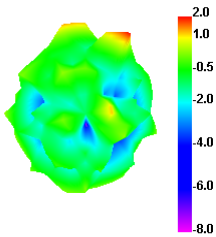
5450.000MHz E1



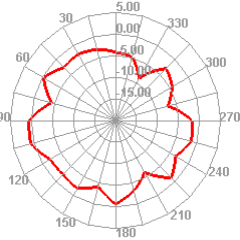
5450.000MHz E2



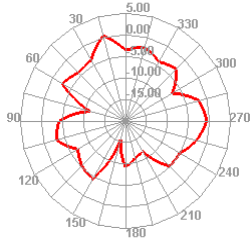
5500.000MHz



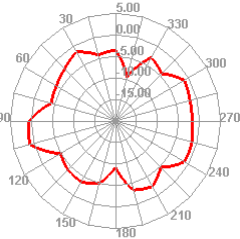
5500.000MHz H



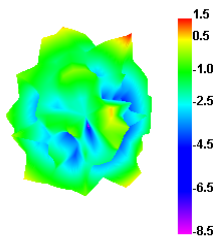
5500.000MHz E1



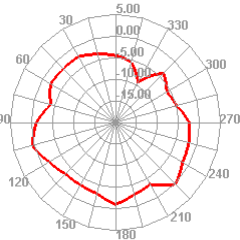
5500.000MHz E2



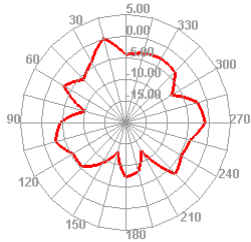
5550.000MHz



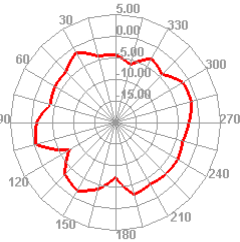
5550.000MHz H



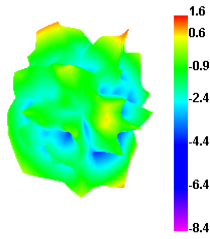
5550.000MHz E1



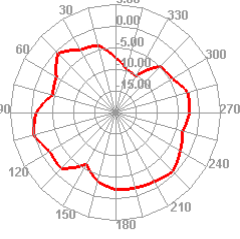
5550.000MHz E2



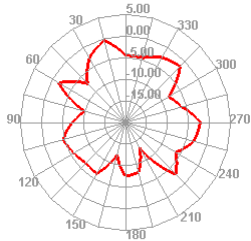
5600.000MHz



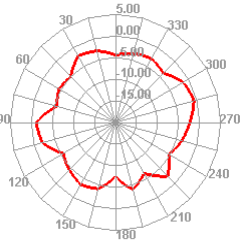
5600.000MHz H



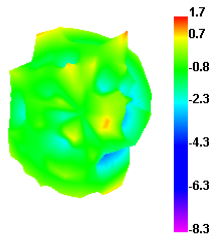
5600.000MHz E1



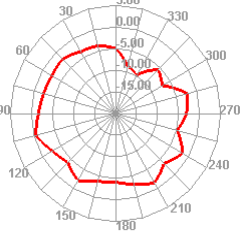
5600.000MHz E2



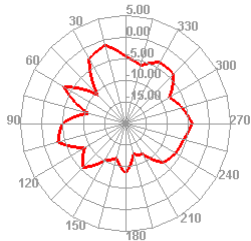
5650.000MHz



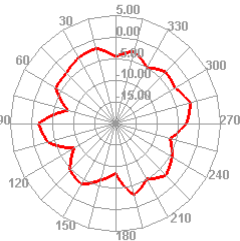
5650.000MHz H



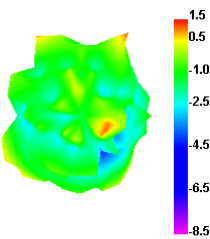
5650.000MHz E1



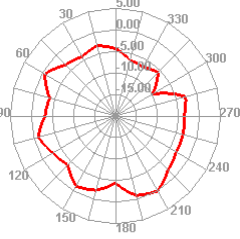
5650.000MHz E2



5700.000MHz

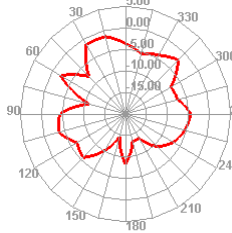


5700.000MHz H

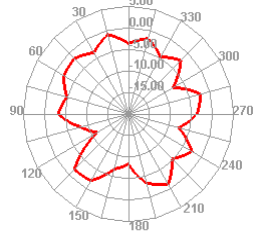




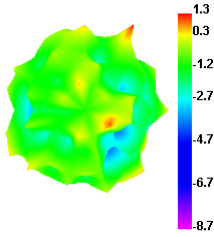
5700.000MHz E1



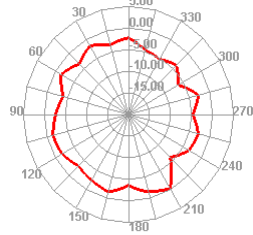
5700.000MHz E2



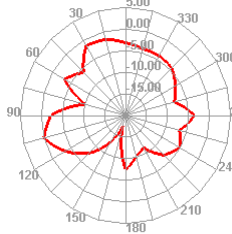
5750.000MHz



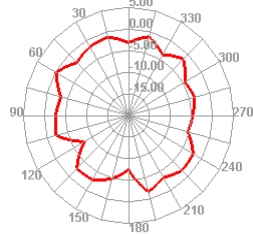
5750.000MHz H



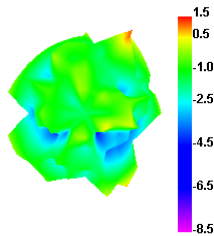
5750.000MHz E1



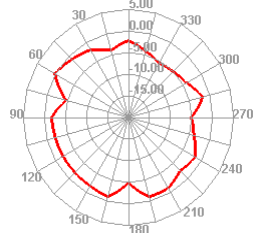
5750.000MHz E2



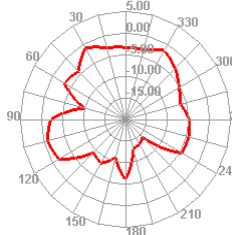
5800.000MHz



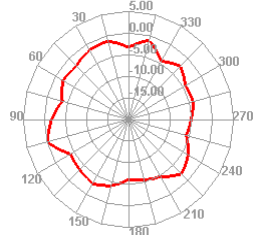
5800.000MHz H



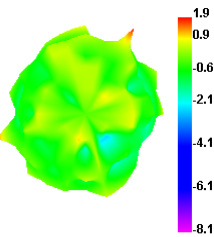
5800.000MHz E1



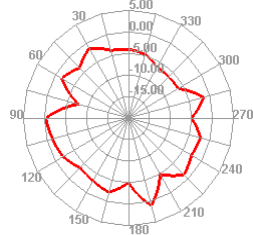
5800.000MHz E2



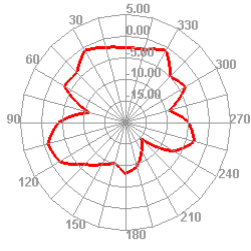
5850.000MHz



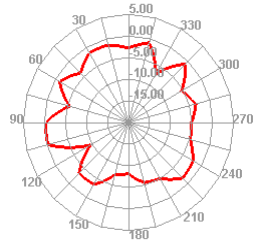
5850.000MHz H



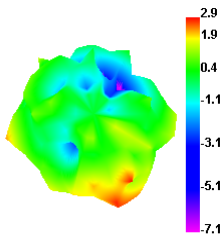
5850.000MHz E1



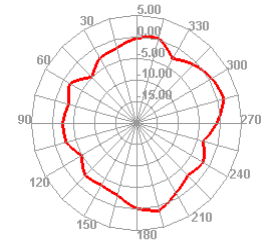
5850.000MHz E2



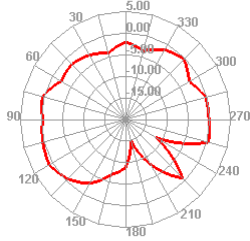
5150.000MHz



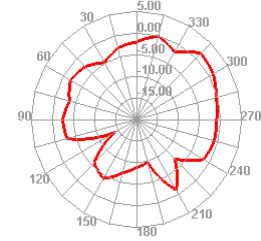
5150.000MHz H



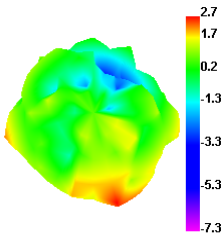
5150.000MHz E1



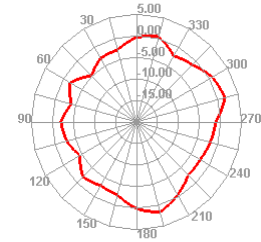
5150.000MHz E2



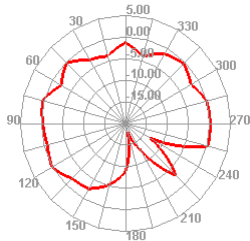
5200.000MHz



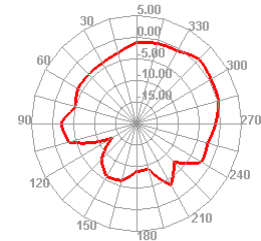
5200.000MHz H



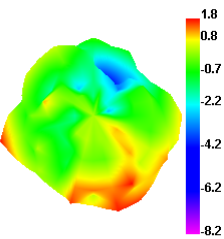
5200.000MHz E1



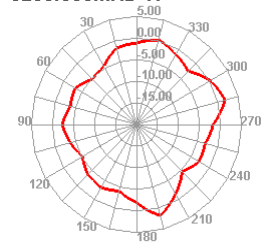
5200.000MHz E2



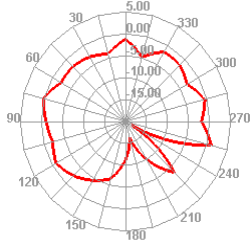
5250.000MHz



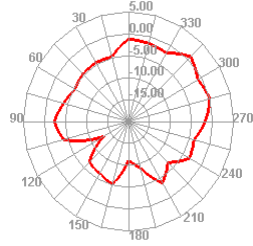
5250.000MHz H



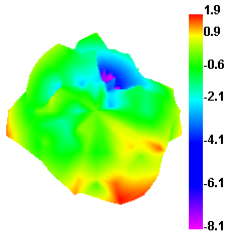
5250.000MHz E1



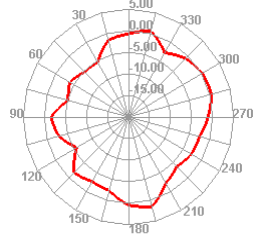
5250.000MHz E2



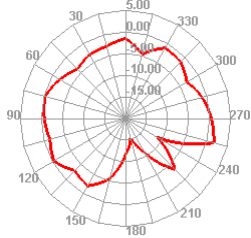
5300.000MHz



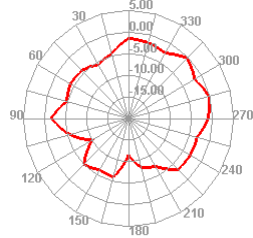
5300.000MHz H



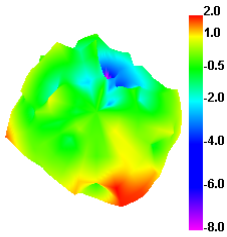
5300.000MHz E1



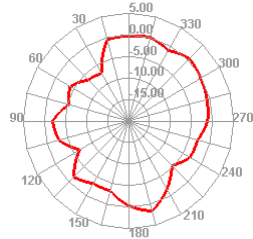
5300.000MHz E2



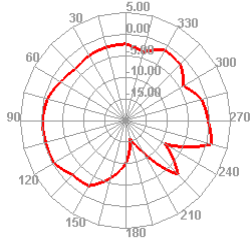
5350.000MHz



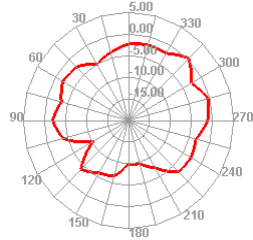
5350.000MHz H



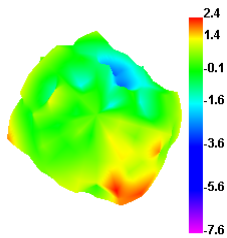
5350.000MHz E1



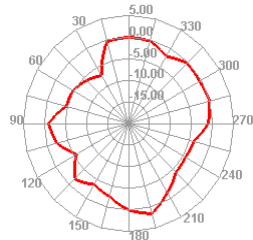
5350.000MHz E2



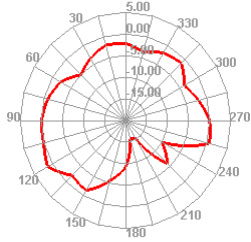
5400.000MHz



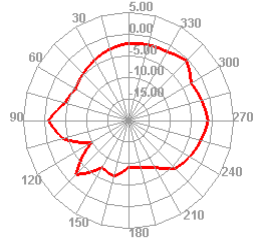
5400.000MHz H



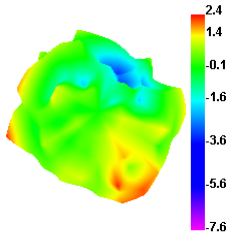
5400.000MHz E1



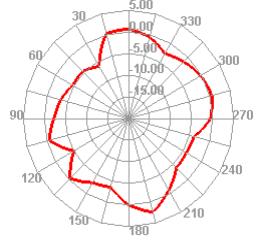
5400.000MHz E2



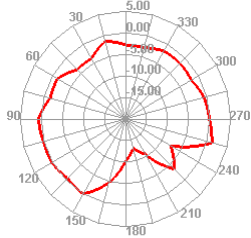
5450.000MHz



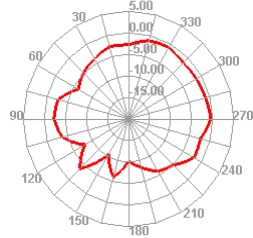
5450.000MHz H



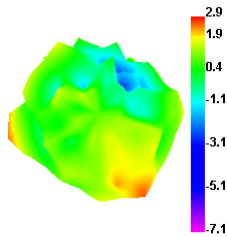
5450.000MHz E1



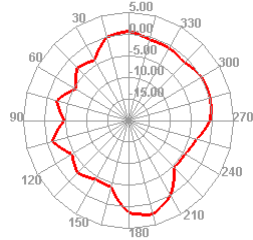
5450.000MHz E2



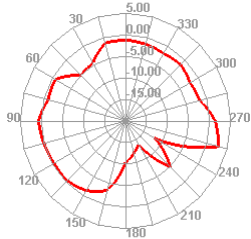
5500.000MHz



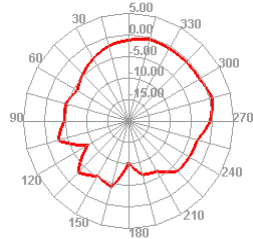
5500.000MHz H



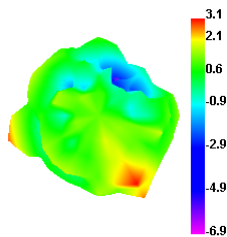
5500.000MHz E1



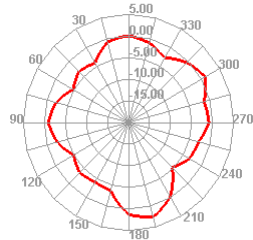
5500.000MHz E2



5550.000MHz

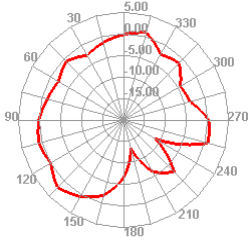


5550.000MHz H

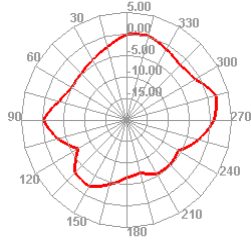




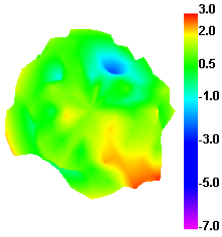
5700.000MHz E1



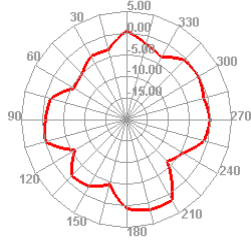
5700.000MHz E2



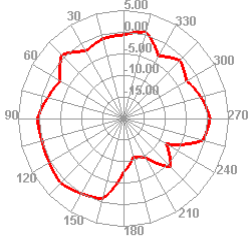
5750.000MHz



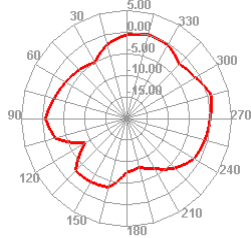
5750.000MHz H



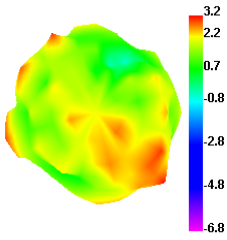
5750.000MHz E1



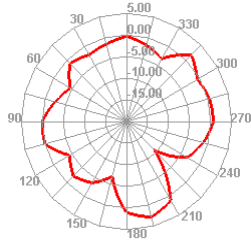
5750.000MHz E2



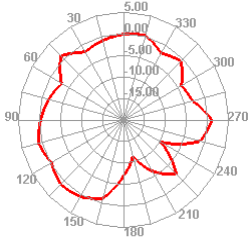
5800.000MHz



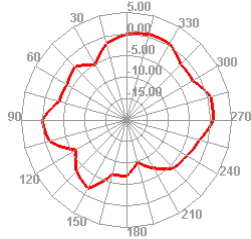
5800.000MHz H



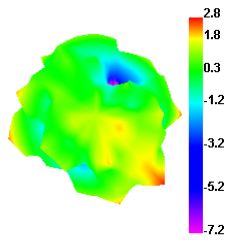
5800.000MHz E1



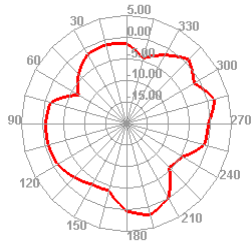
5800.000MHz E2



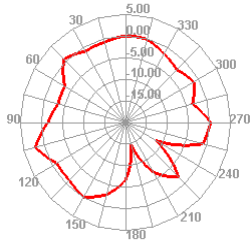
5850.000MHz



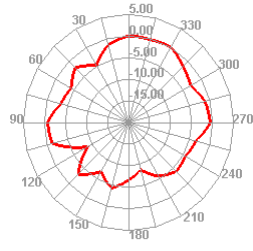
5850.000MHz H



5850.000MHz E1

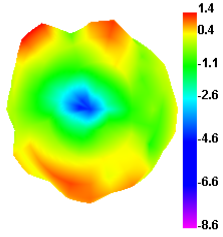


5850.000MHz E2

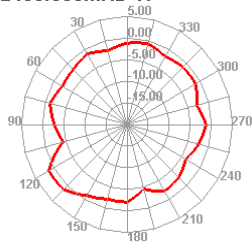




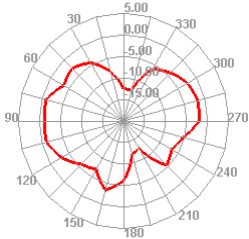
2400.000MHz



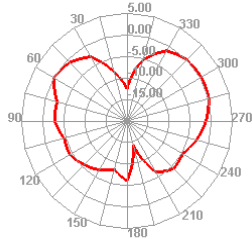
2400.000MHz H



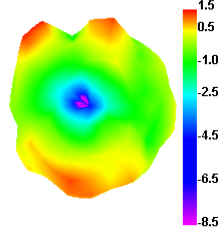
2400.000MHz E1



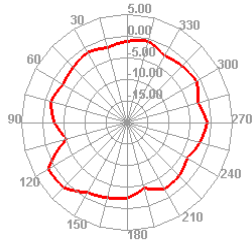
2400.000MHz E2



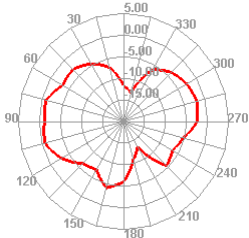
2410.000MHz



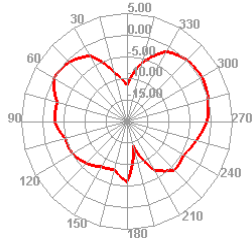
2410.000MHz H



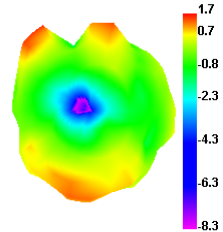
2410.000MHz E1



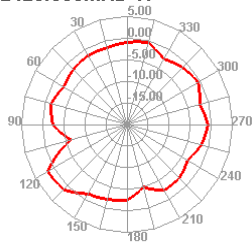
2410.000MHz E2



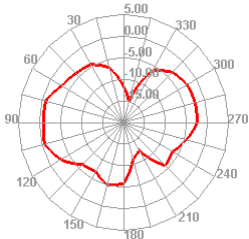
2420.000MHz



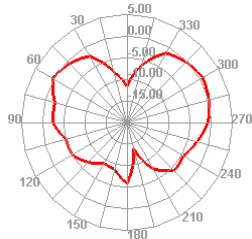
2420.000MHz H



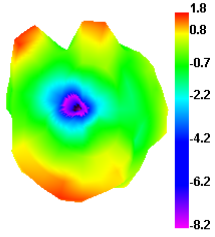
2420.000MHz E1



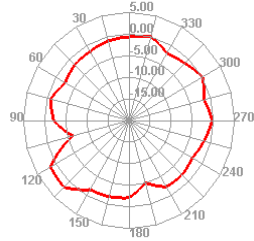
2420.000MHz E2



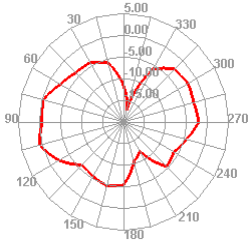
2430.000MHz



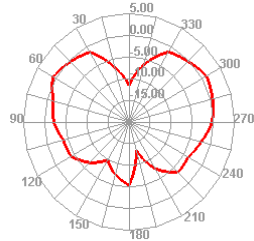
2430.000MHz H



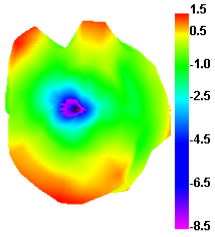
2430.000MHz E1



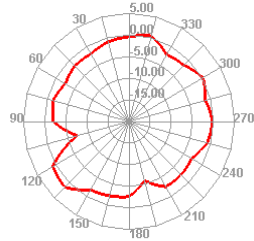
2430.000MHz E2



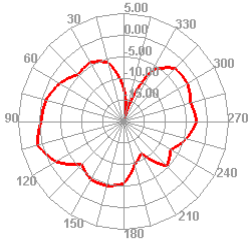
2440.000MHz



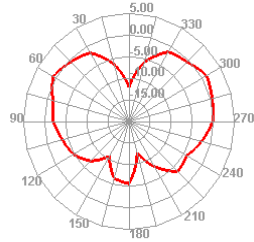
2440.000MHz H



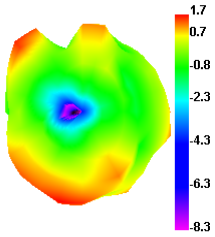
2440.000MHz E1



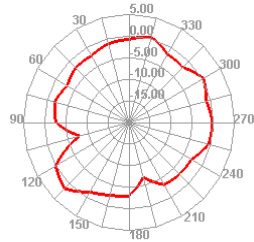
2440.000MHz E2



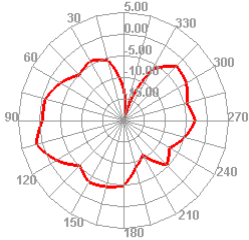
2450.000MHz



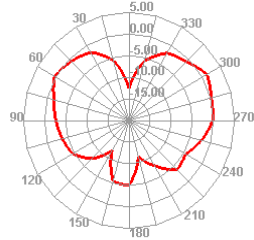
2450.000MHz H



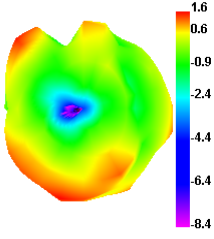
2450.000MHz E1



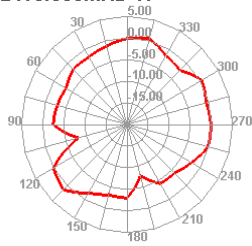
2450.000MHz E2



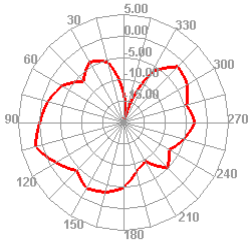
2460.000MHz



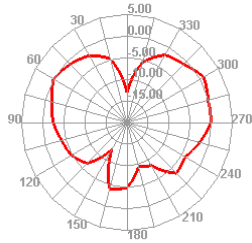
2460.000MHz H



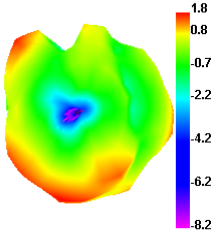
2460.000MHz E1



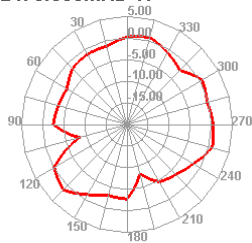
2460.000MHz E2



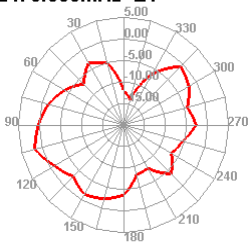
2470.000MHz



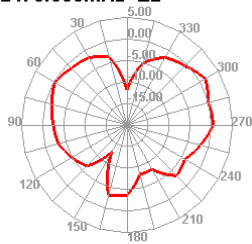
2470.000MHz H



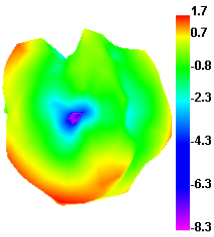
2470.000MHz E1



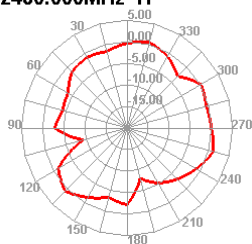
2470.000MHz E2



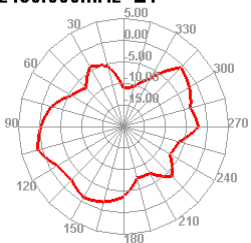
2480.000MHz



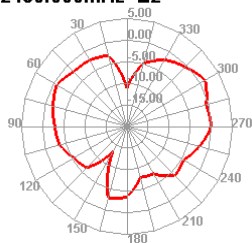
2480.000MHz H



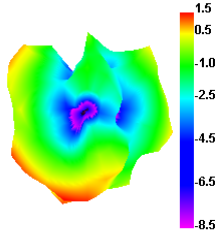
2480.000MHz E1



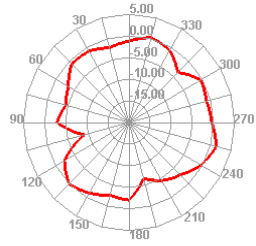
2480.000MHz E2



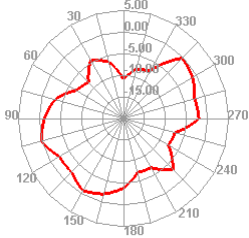
2490.000MHz



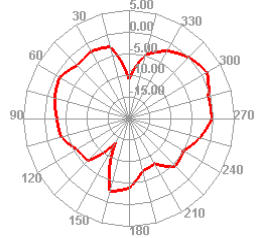
2490.000MHz H



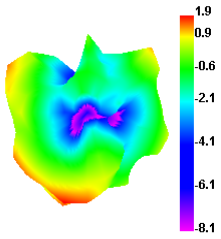
2490.000MHz E1



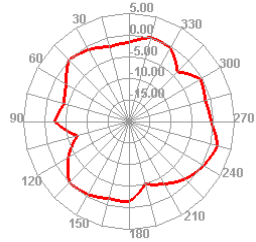
2490.000MHz E2



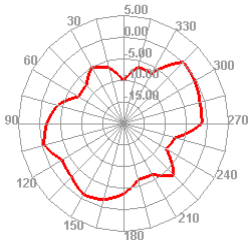
2500.000MHz



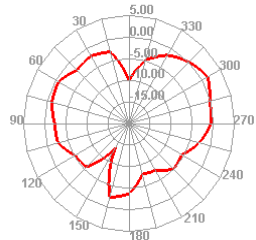
2500.000MHz H

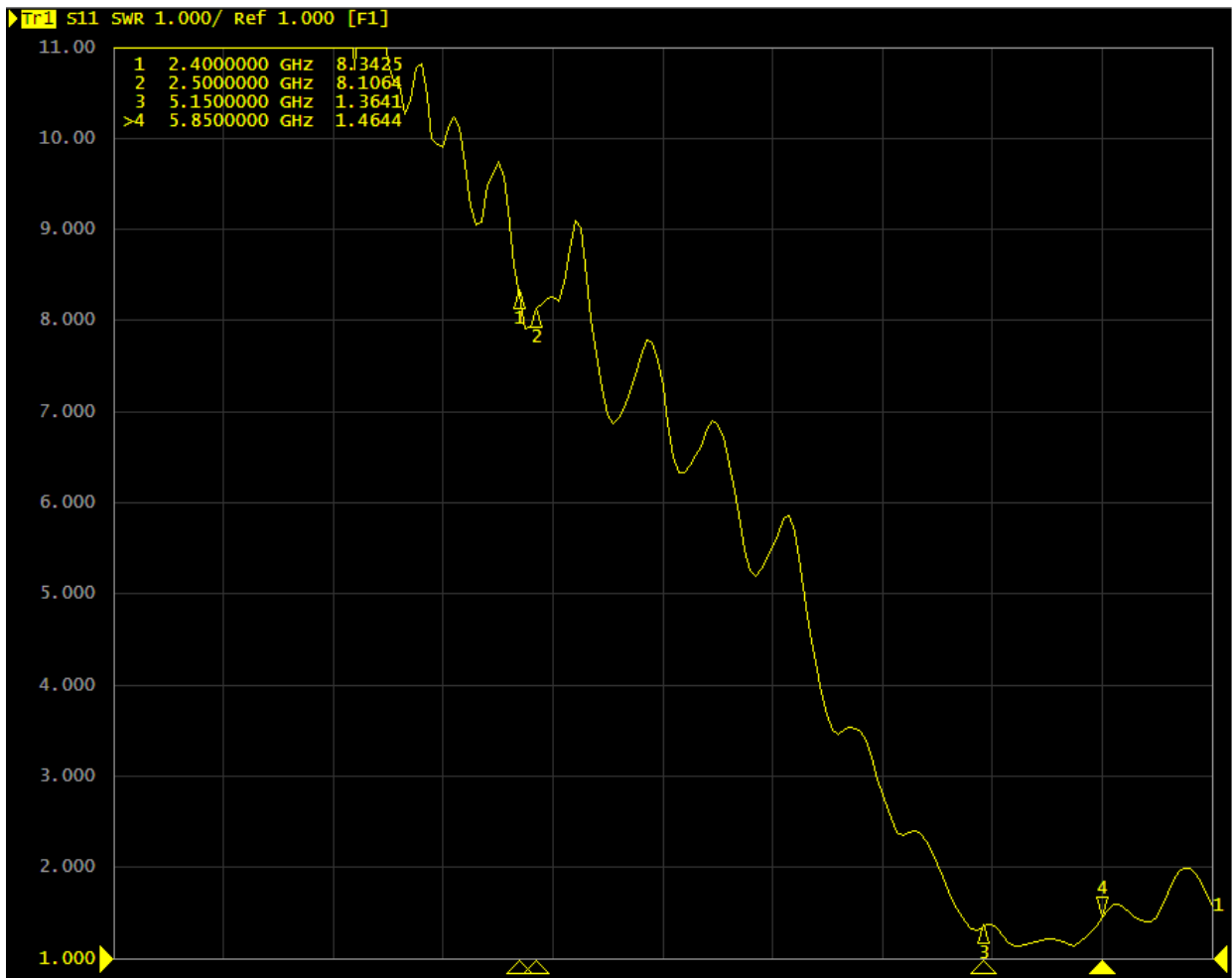


2500.000MHz E1

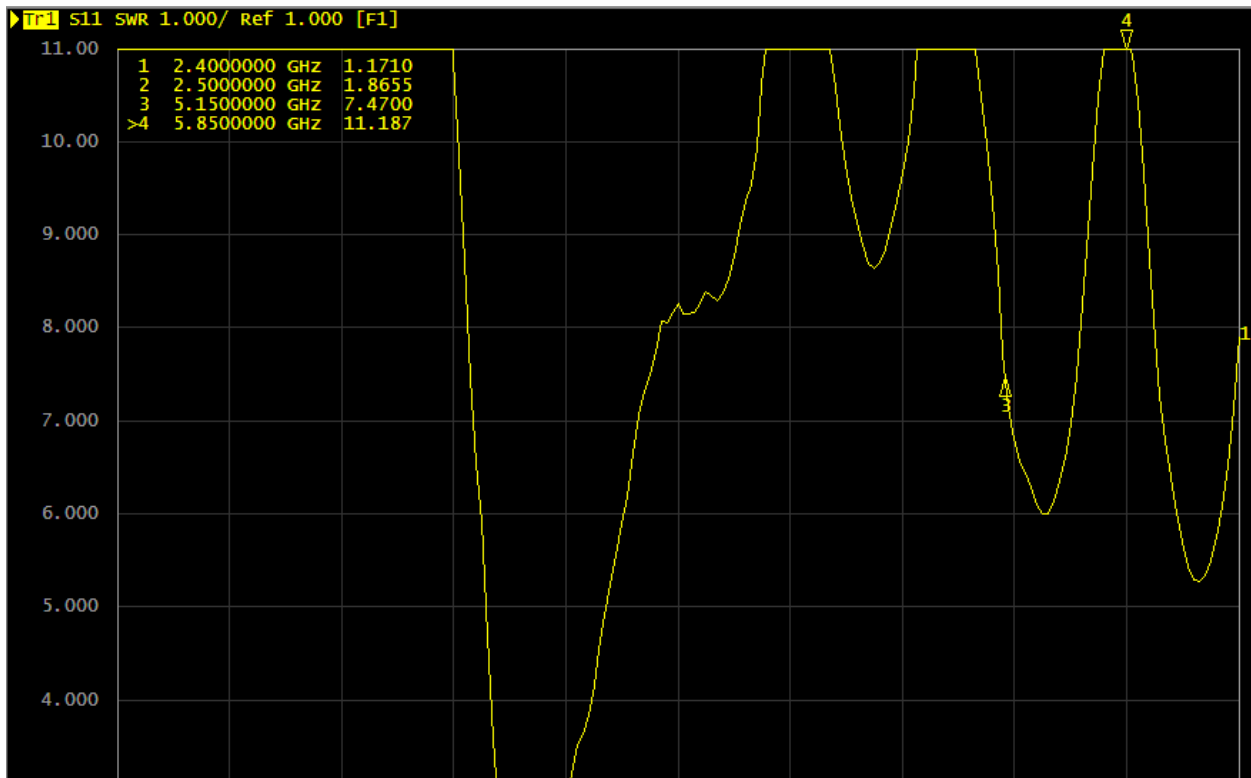


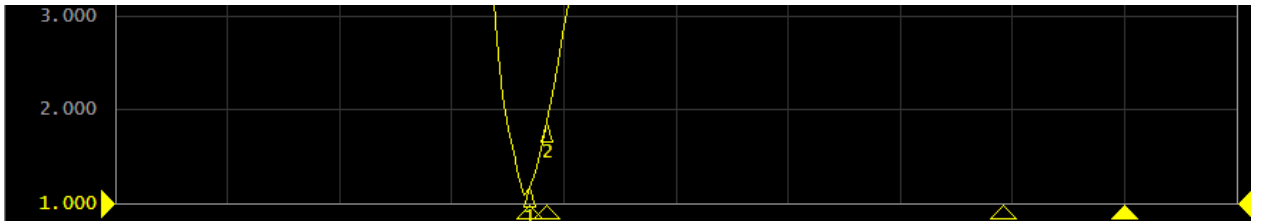
2500.000MHz E2



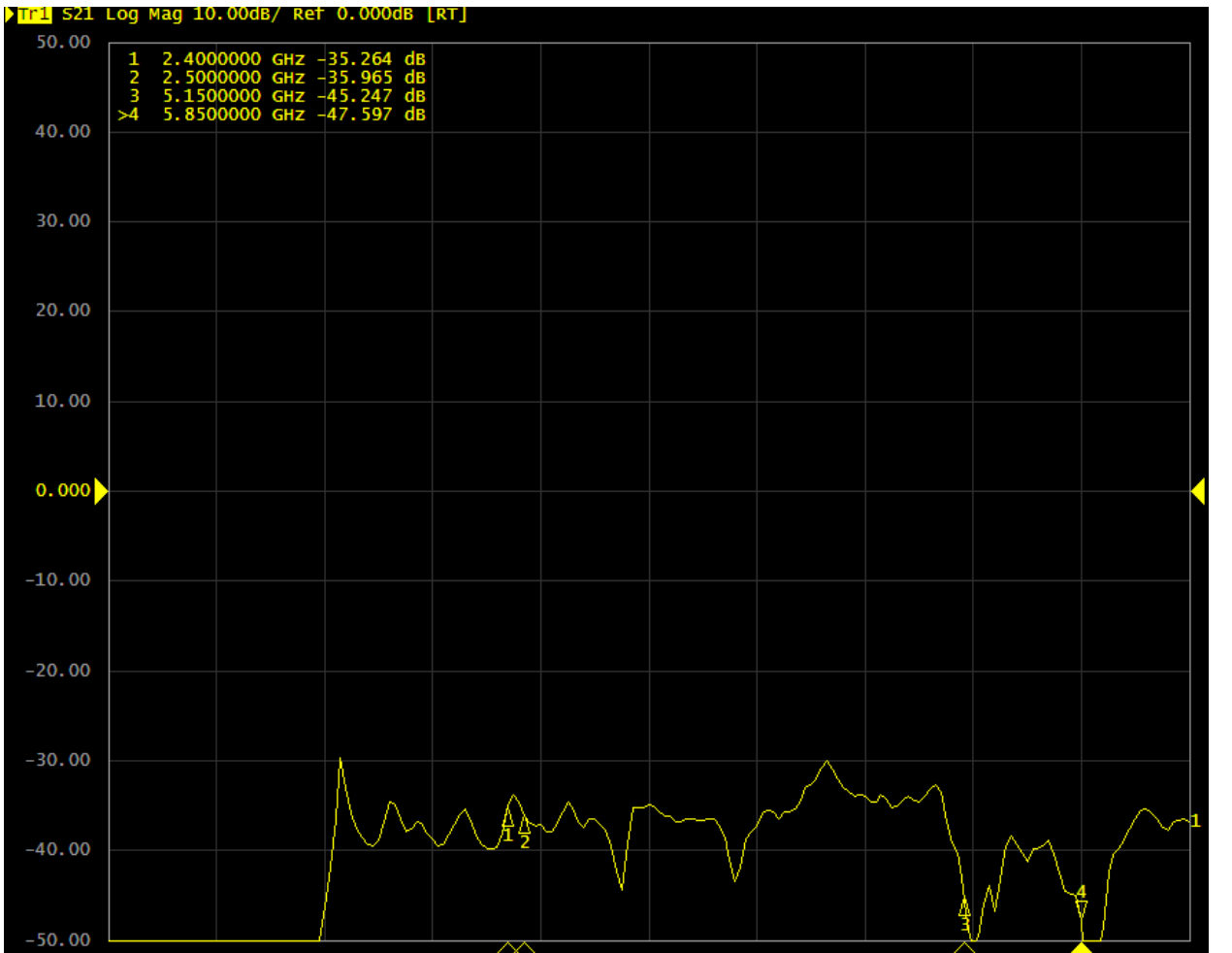


SW2

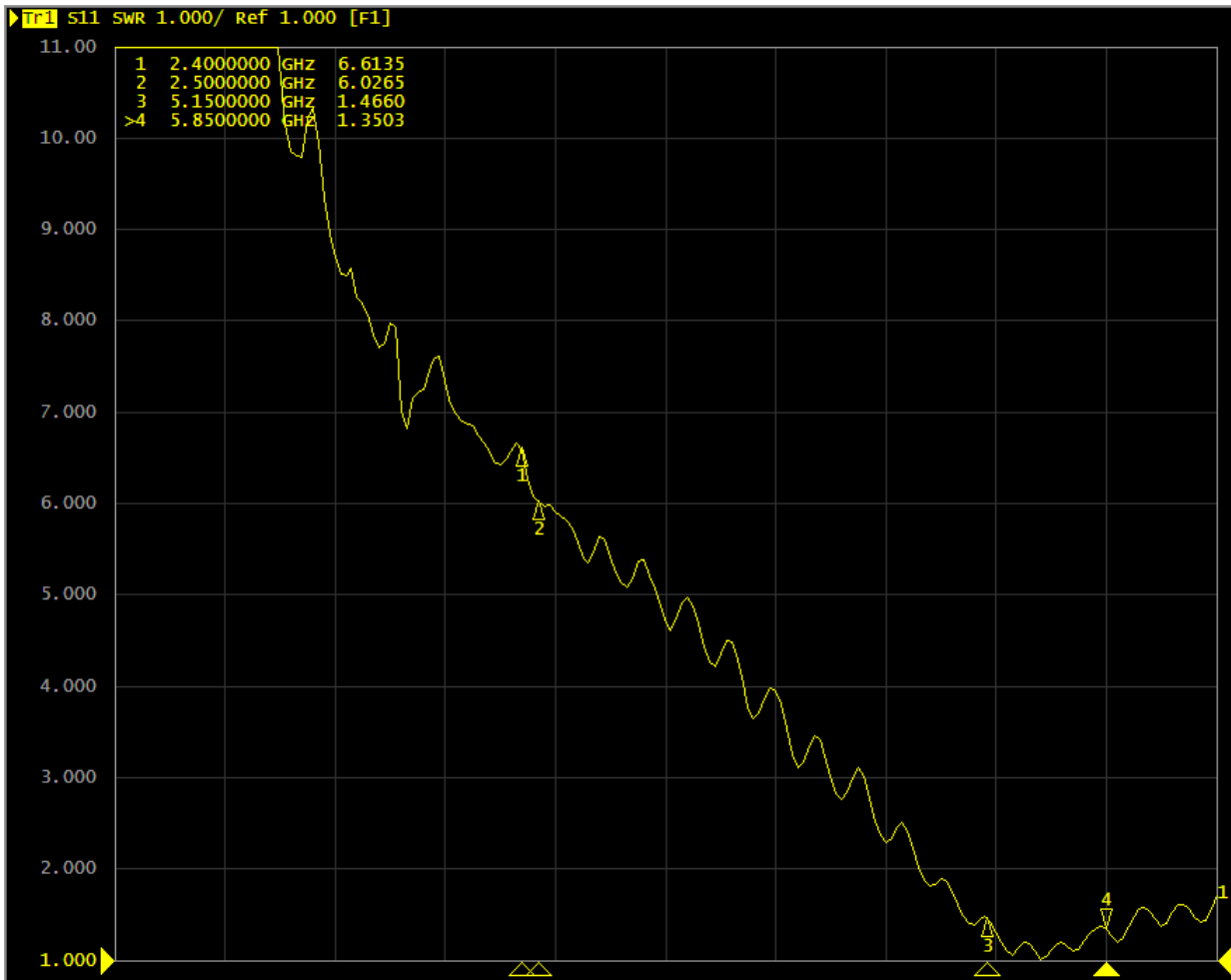




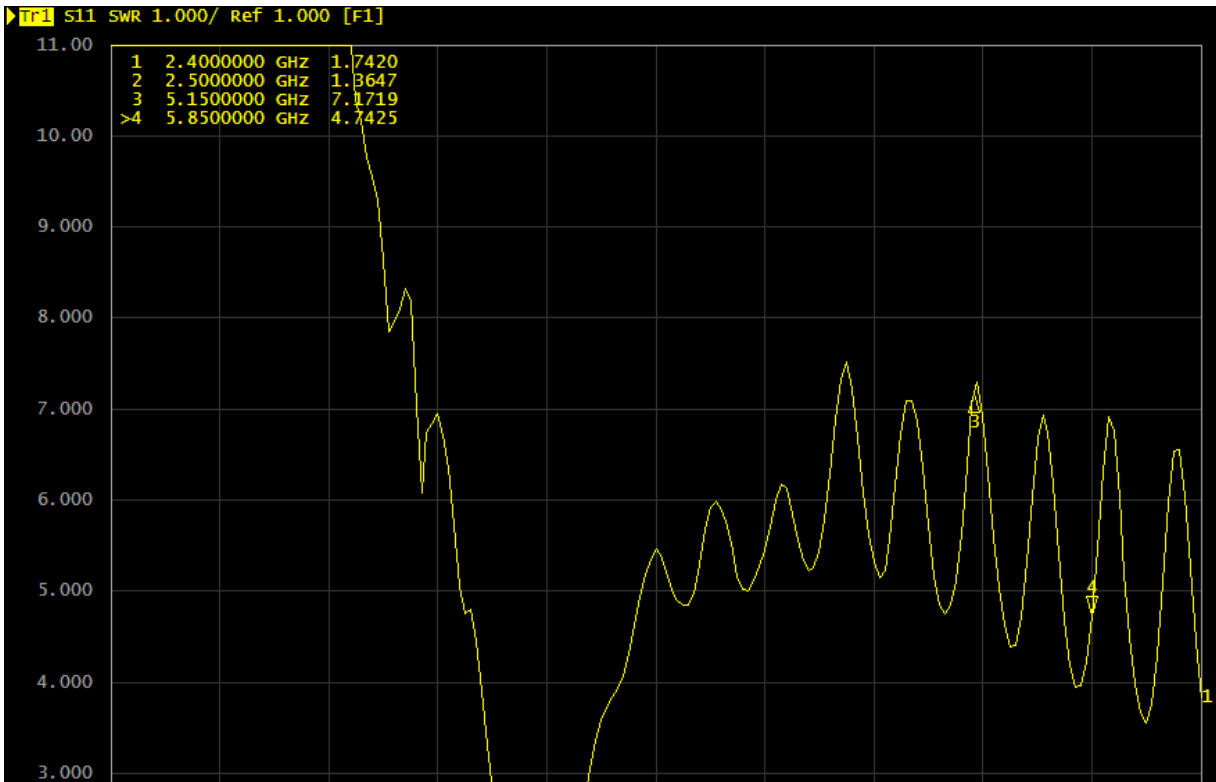
SW5

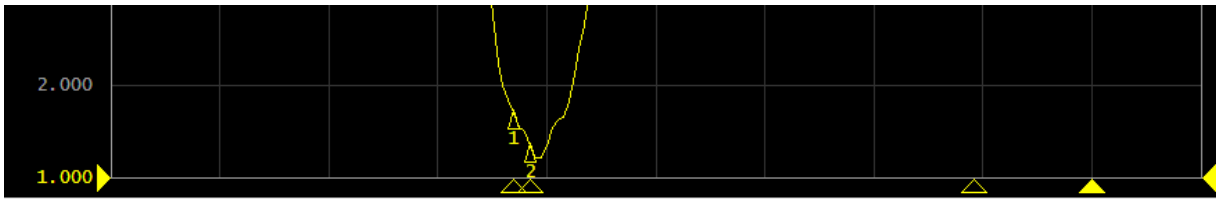


SW2/3-S21

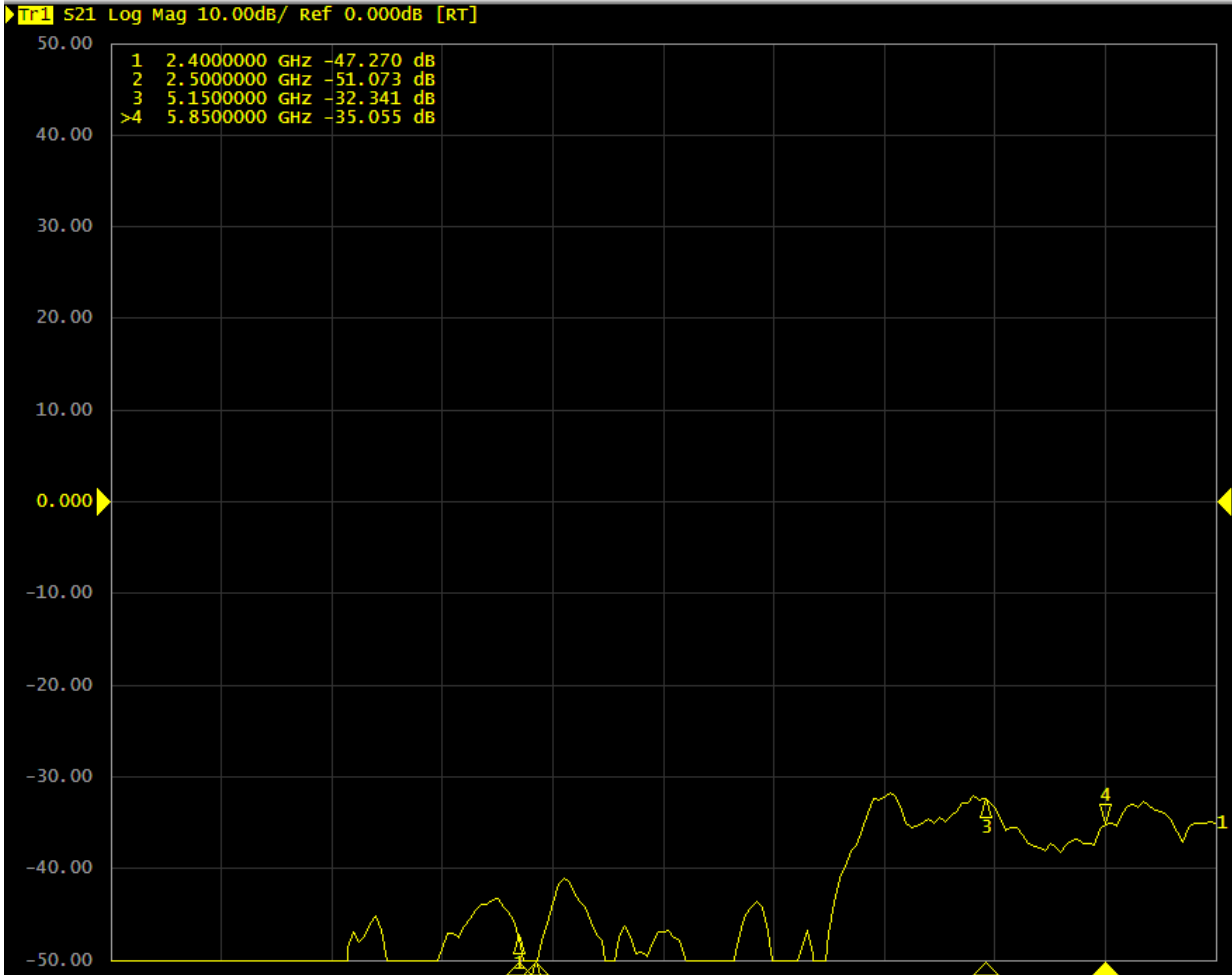


SW3



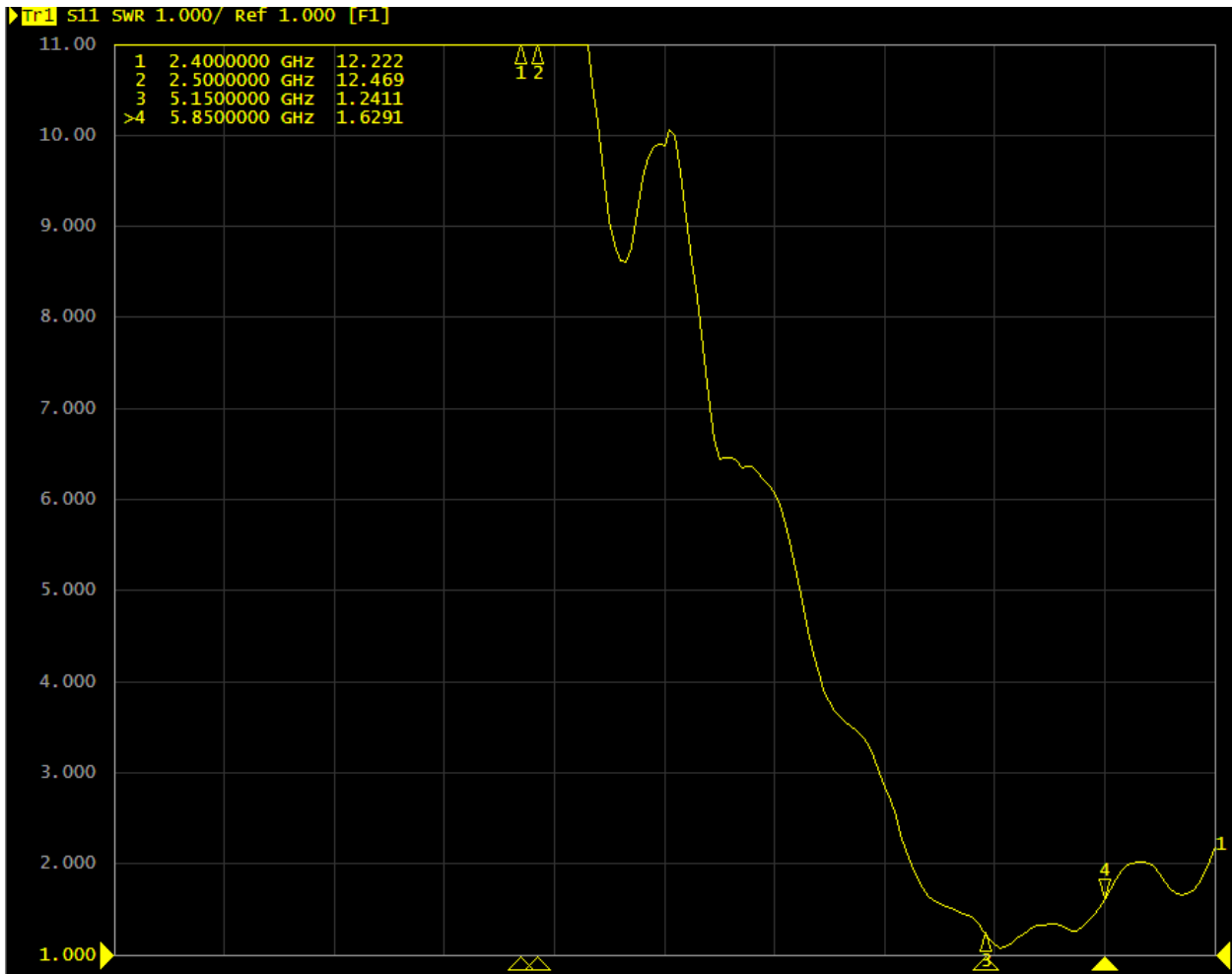


SW6

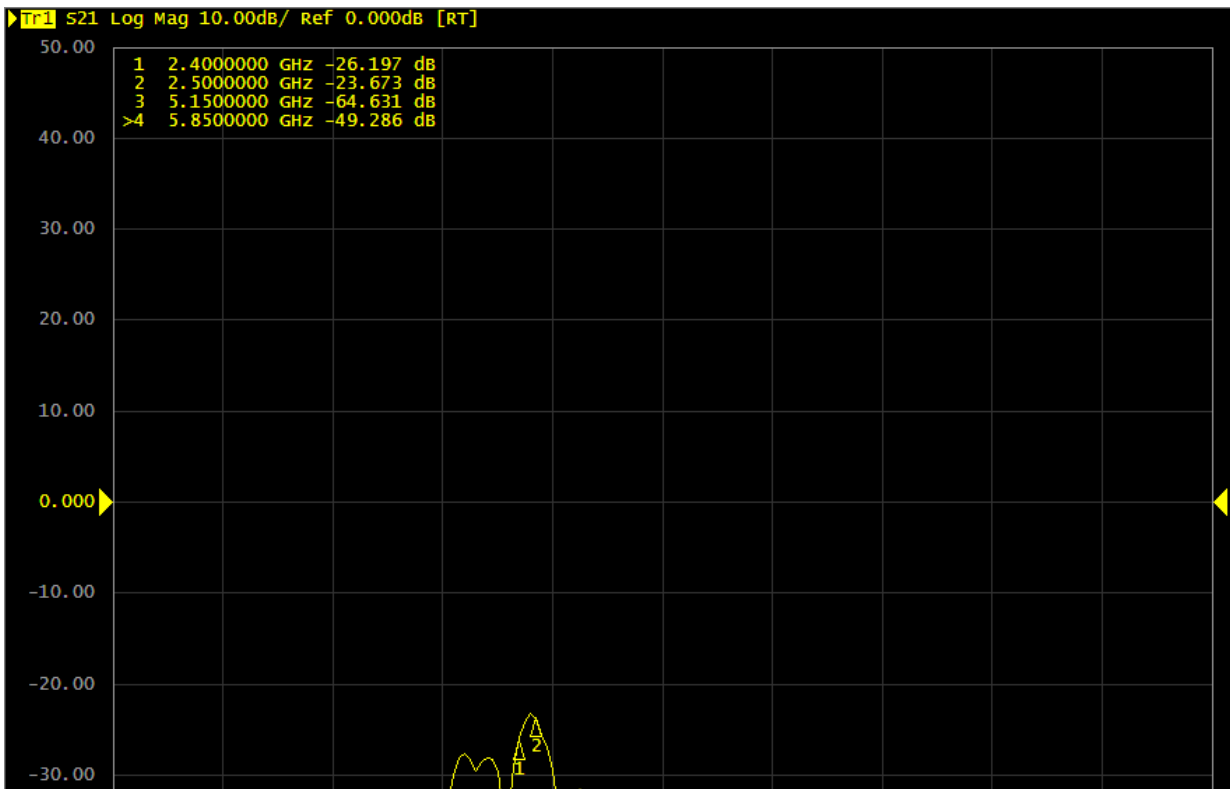


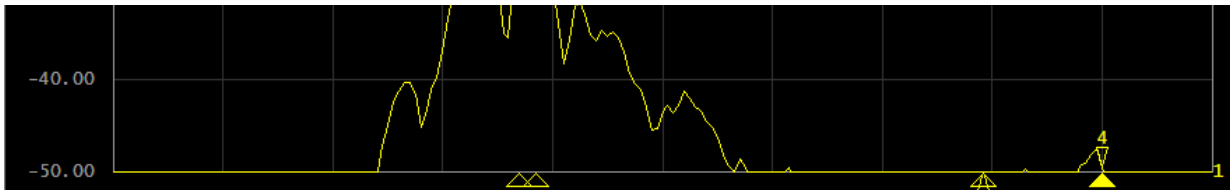
SW2/4-S21



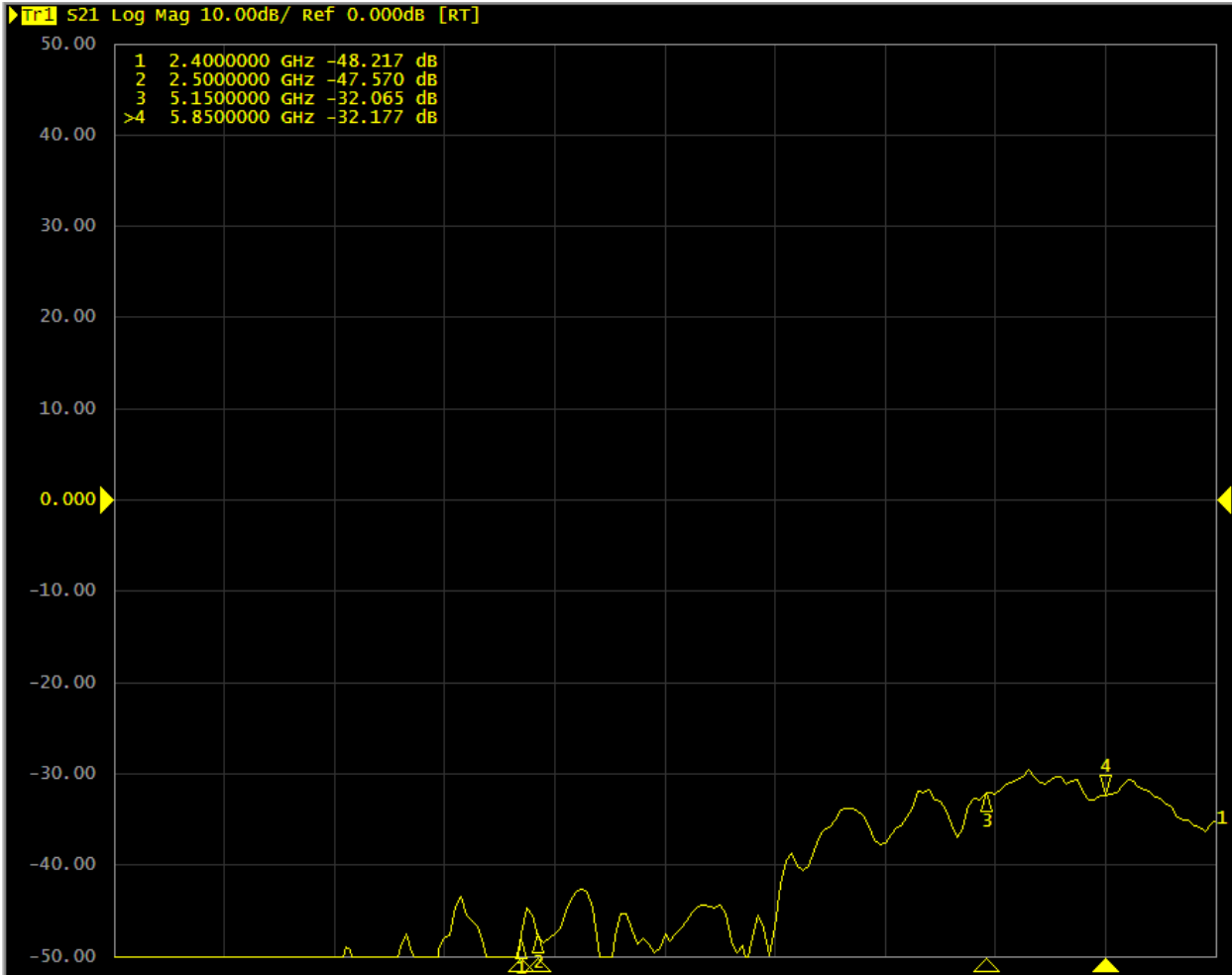


SW4





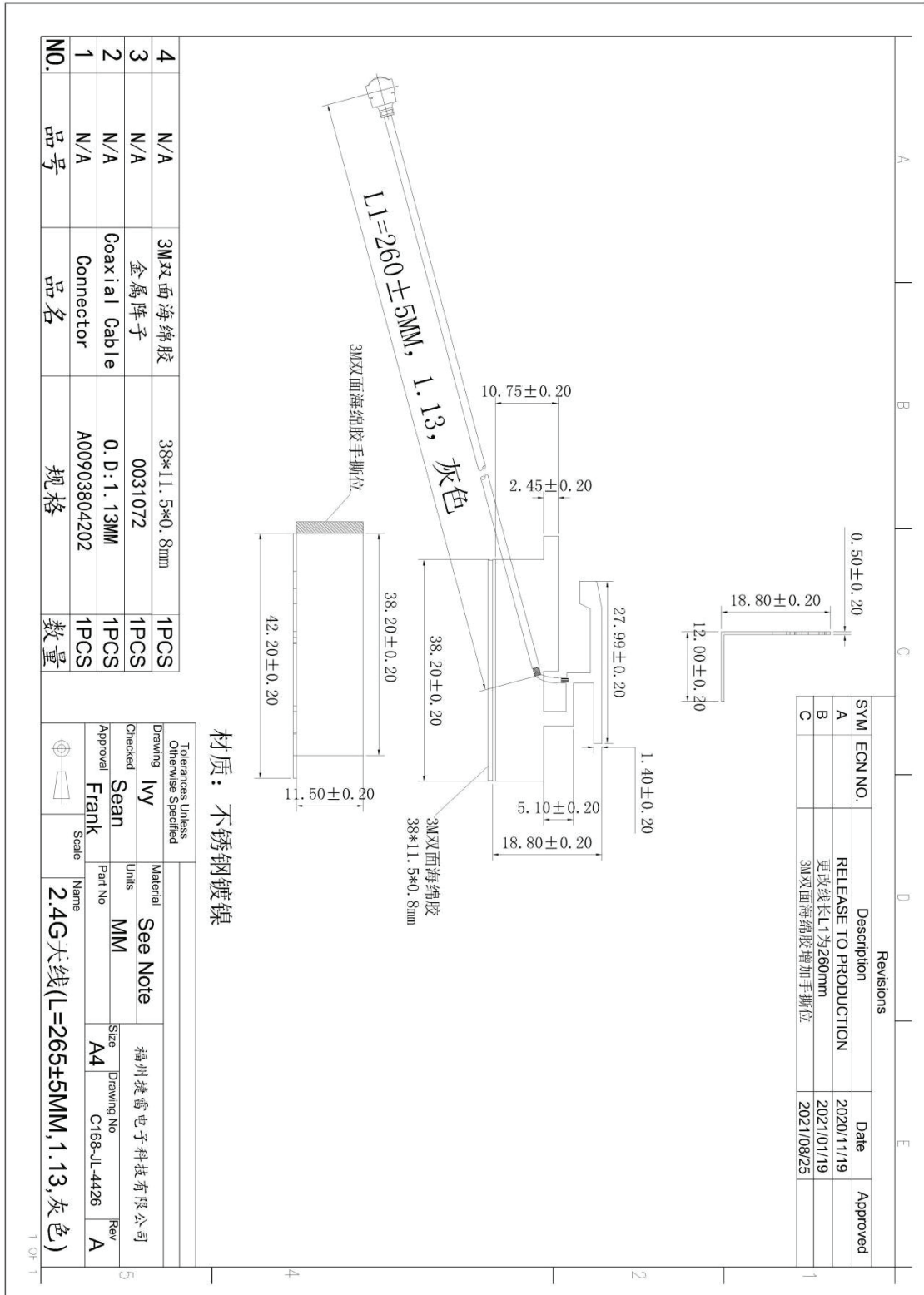
SW5/6-S21



SW2/4-S21

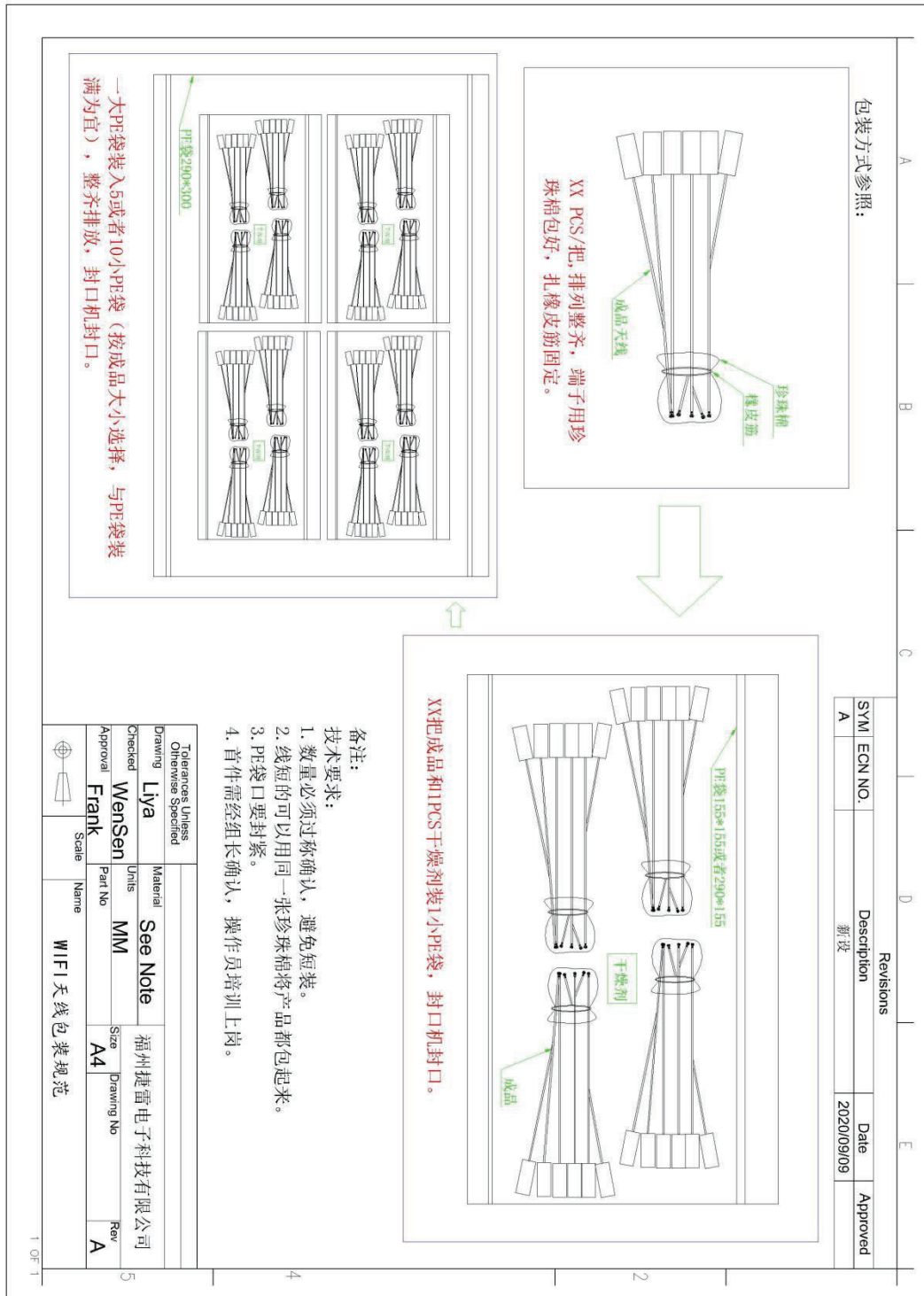
### 3. Mechanical Dimension Drawing

2.4G Ant\_C168-JL-4426 V1.3



# 4.Packing Specification

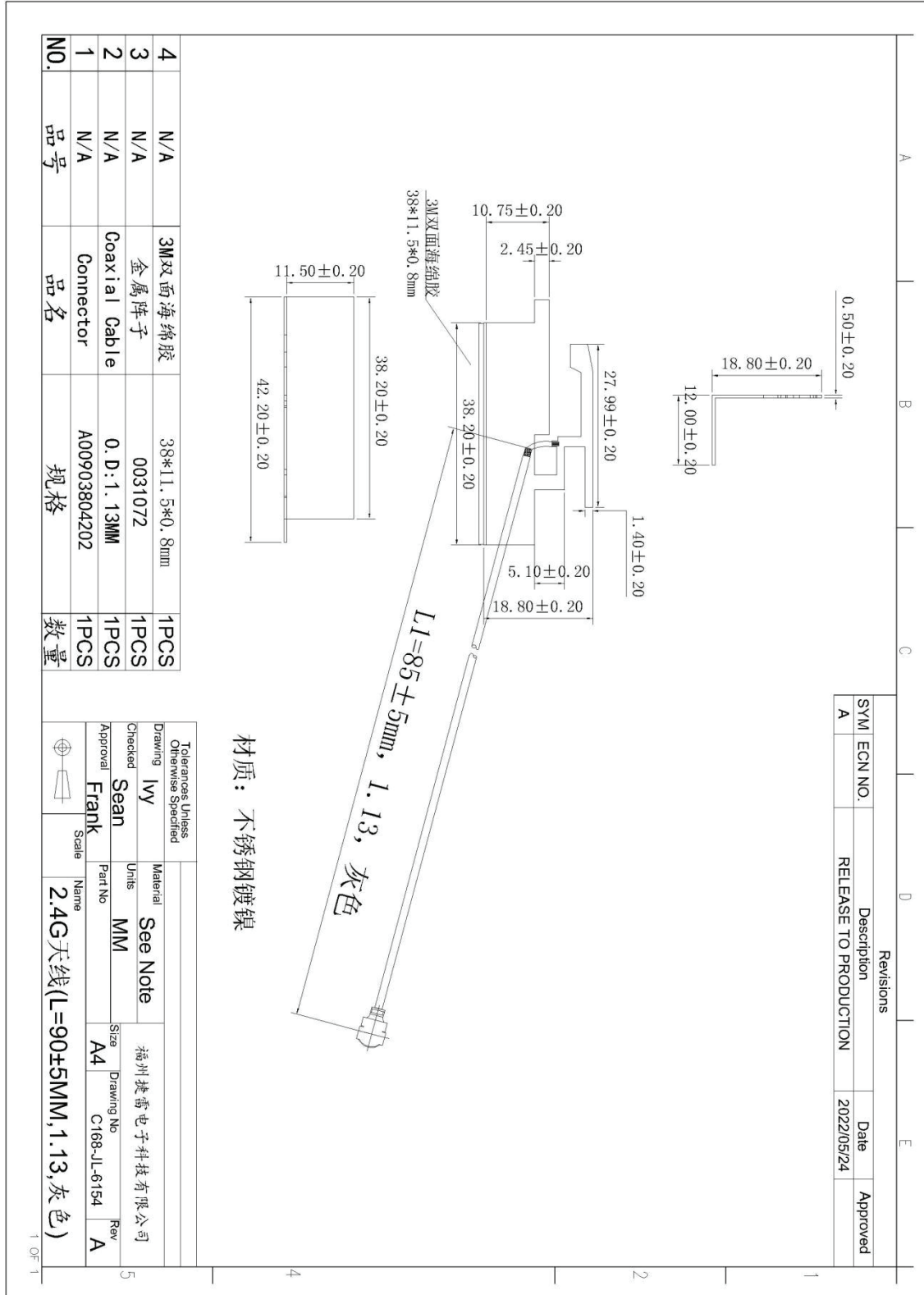
## 2.4G Ant\_ C168-JL-4426 V1.3



Packing 参照图

### 3. Mechanical Dimension Drawing

2.4G Ant\_ C168-JL-6154 V1.0

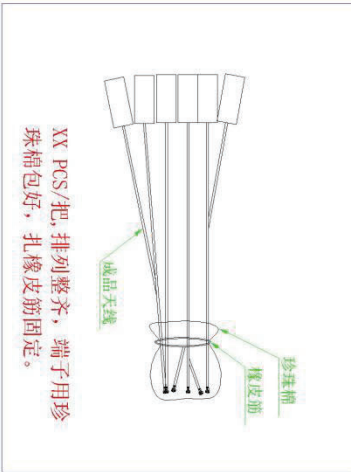


# 4.Packing Specification

2.4G Ant\_ C168-JL-6154 V1.0

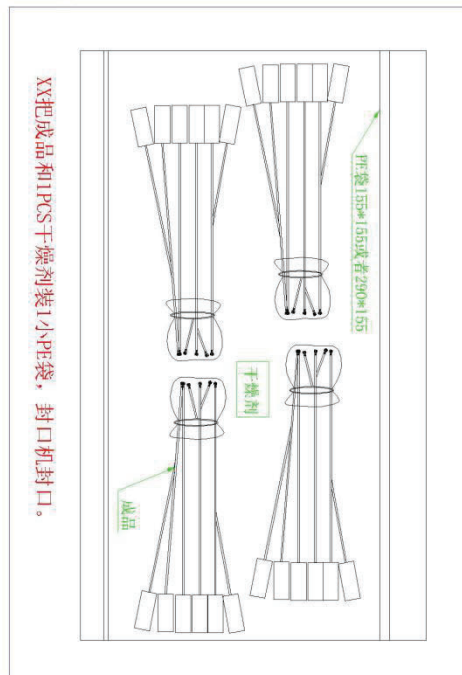
A
B
C
D
E

**包装方式参照:**



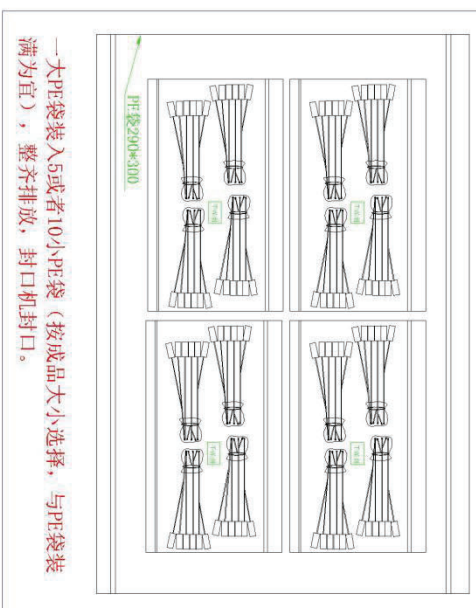
XX PCS/把, 排列整齐, 端子用珍珠棉包好, 扎橡皮筋固定。

1 OF 1



XX把成品和1PCS干燥剂装1小PE袋, 封口机封口。

2



一大PE袋装入5或者10小PE袋 (按成品大小选择, 与PE袋装满为宜), 整齐排放, 封口机封口。

3

**备注:**

技术要求:

1. 数量必须过称确认, 避免短装。
2. 线短的可以同一张珍珠棉将产品都包起来。
3. PE袋口要封紧。
4. 首件需经组长确认, 操作员培训上岗。

Tolerances Unless Otherwise Specified					
Checked	Material	See Note			
WenSen	Units	MM			
Approval	Part No	Size	Drawing No	Rev	
Fank	Scale	A4		A	
Name		WIFI 1 天线包装规范			

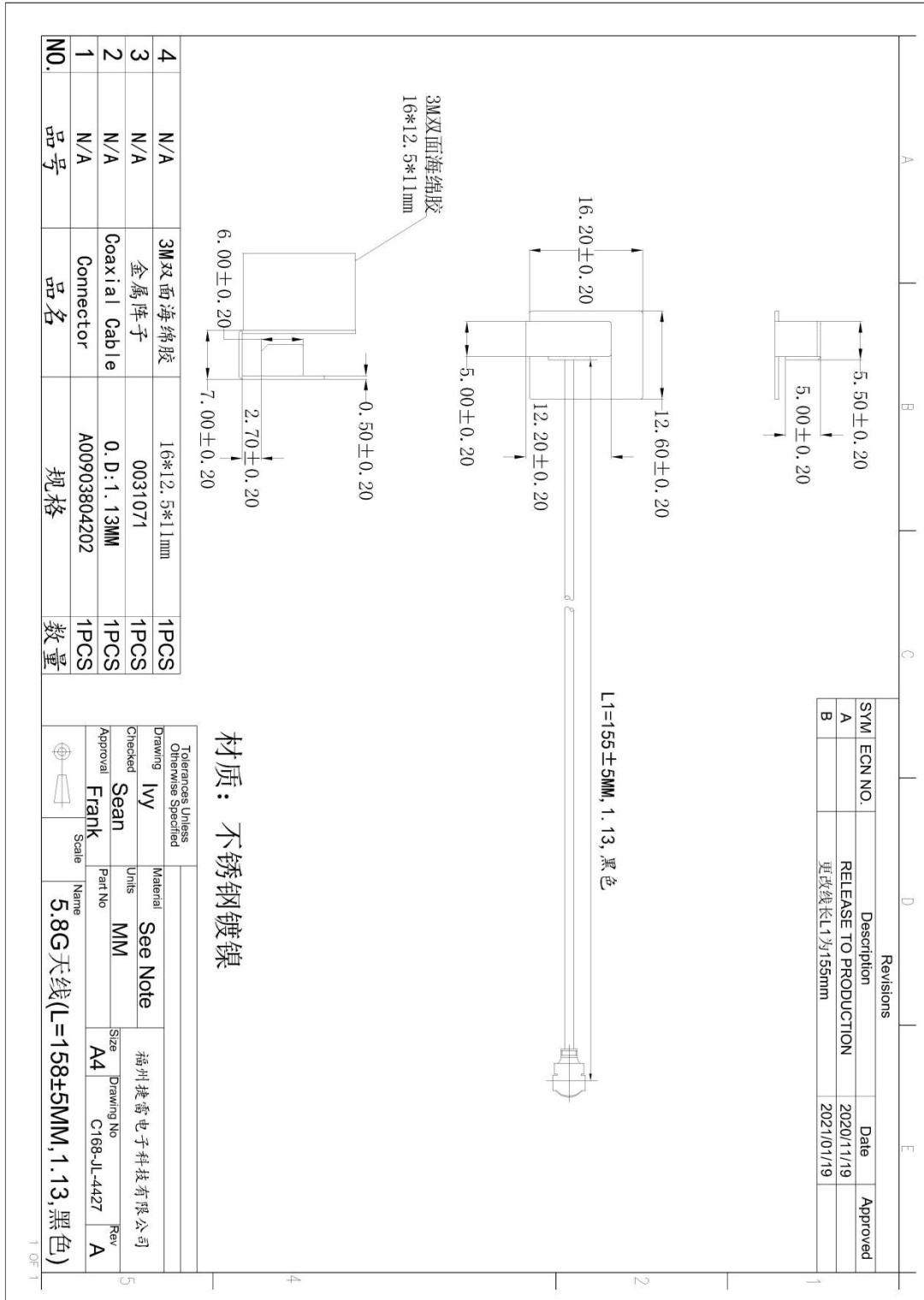
5

Revisions		Date	Approved
SYM	ECN NO.	Description	
A		新段	2020/09/09

Packing 参照图

### 3. Mechanical Dimension Drawing

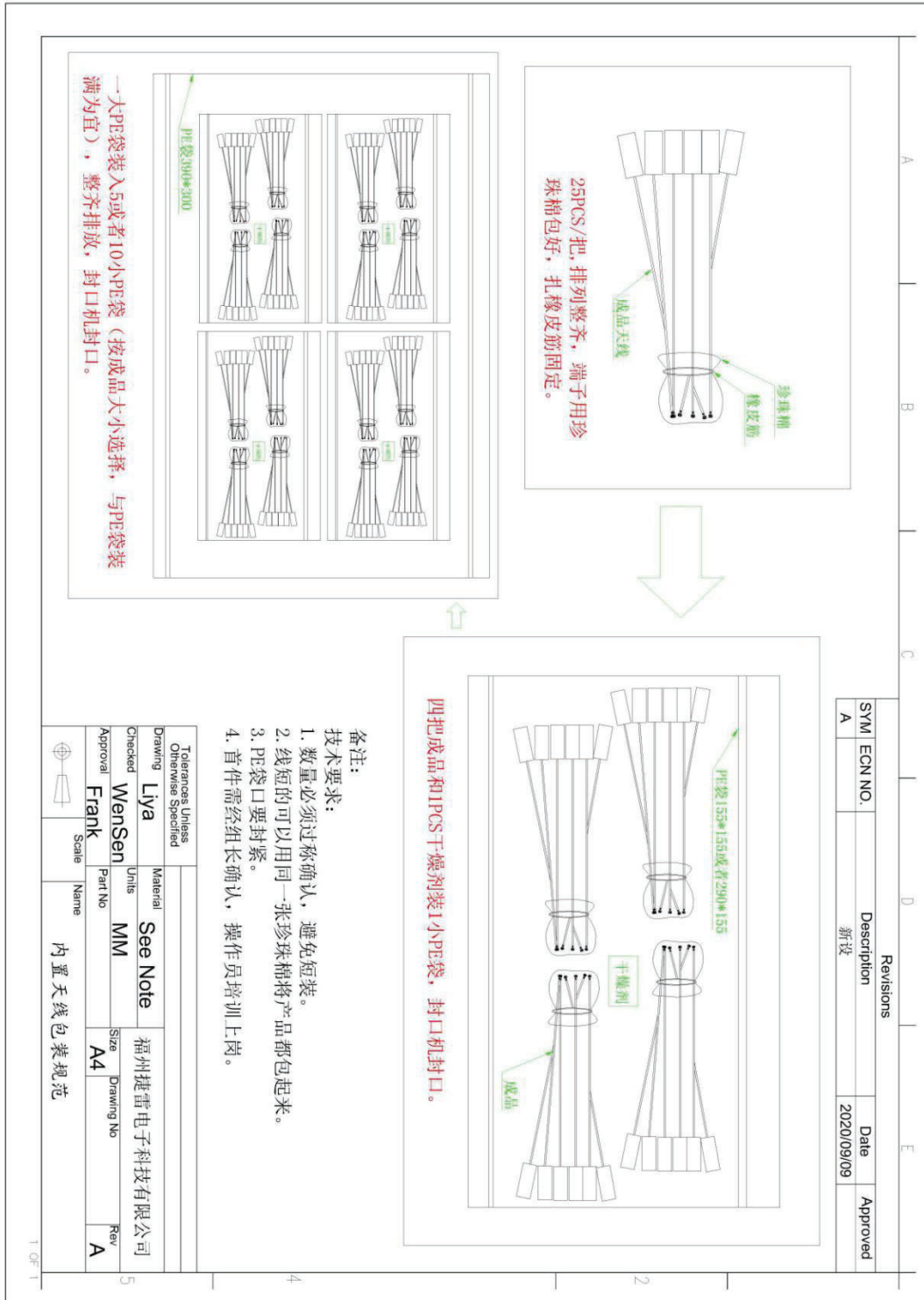
NDS-5.8G Ant\_ C168-JL-4427 V1.1





# 4.Packing Specification

NDS-5.8G Ant\_ C168-JL-4427 V1.1

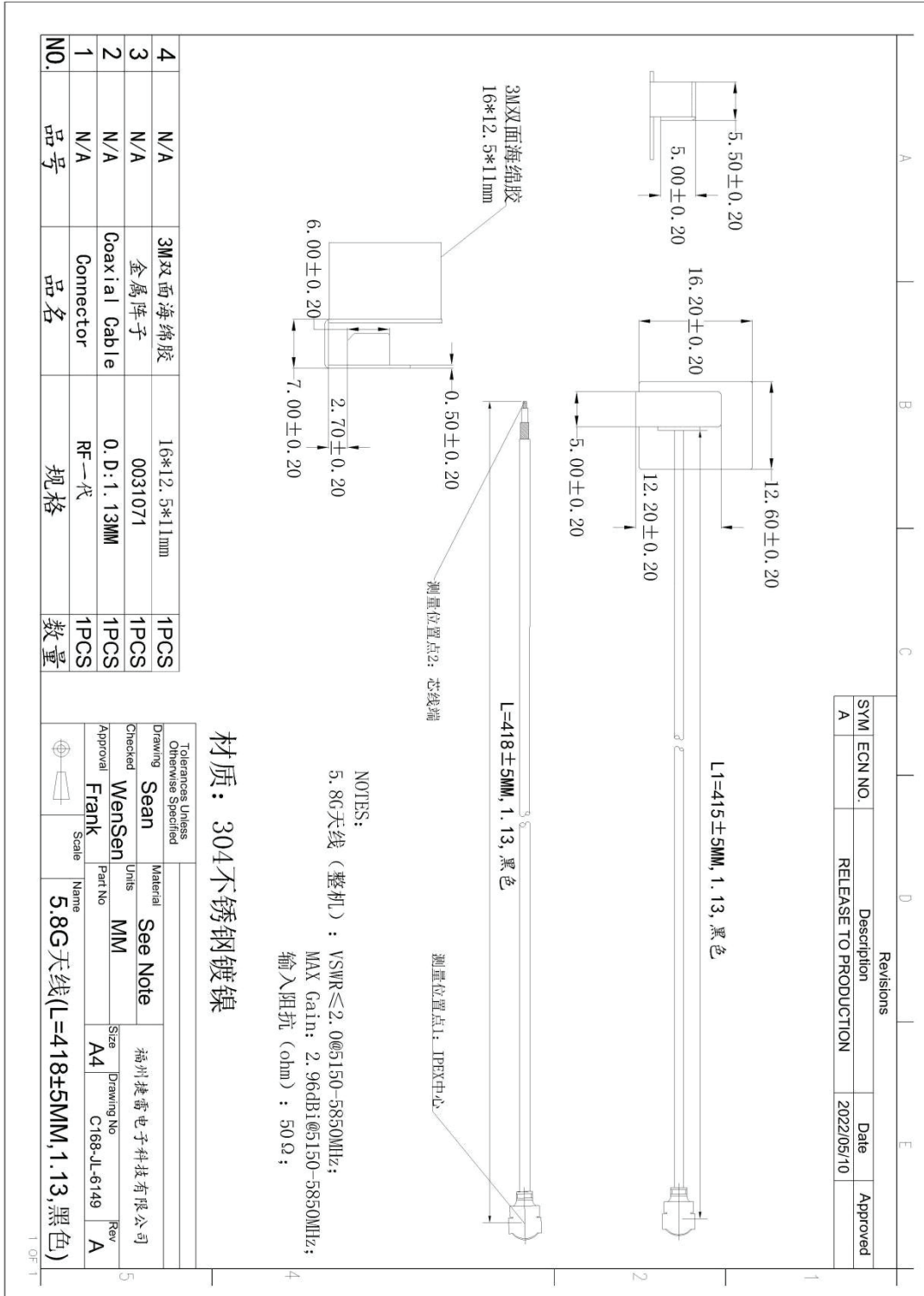


Packing 参照图



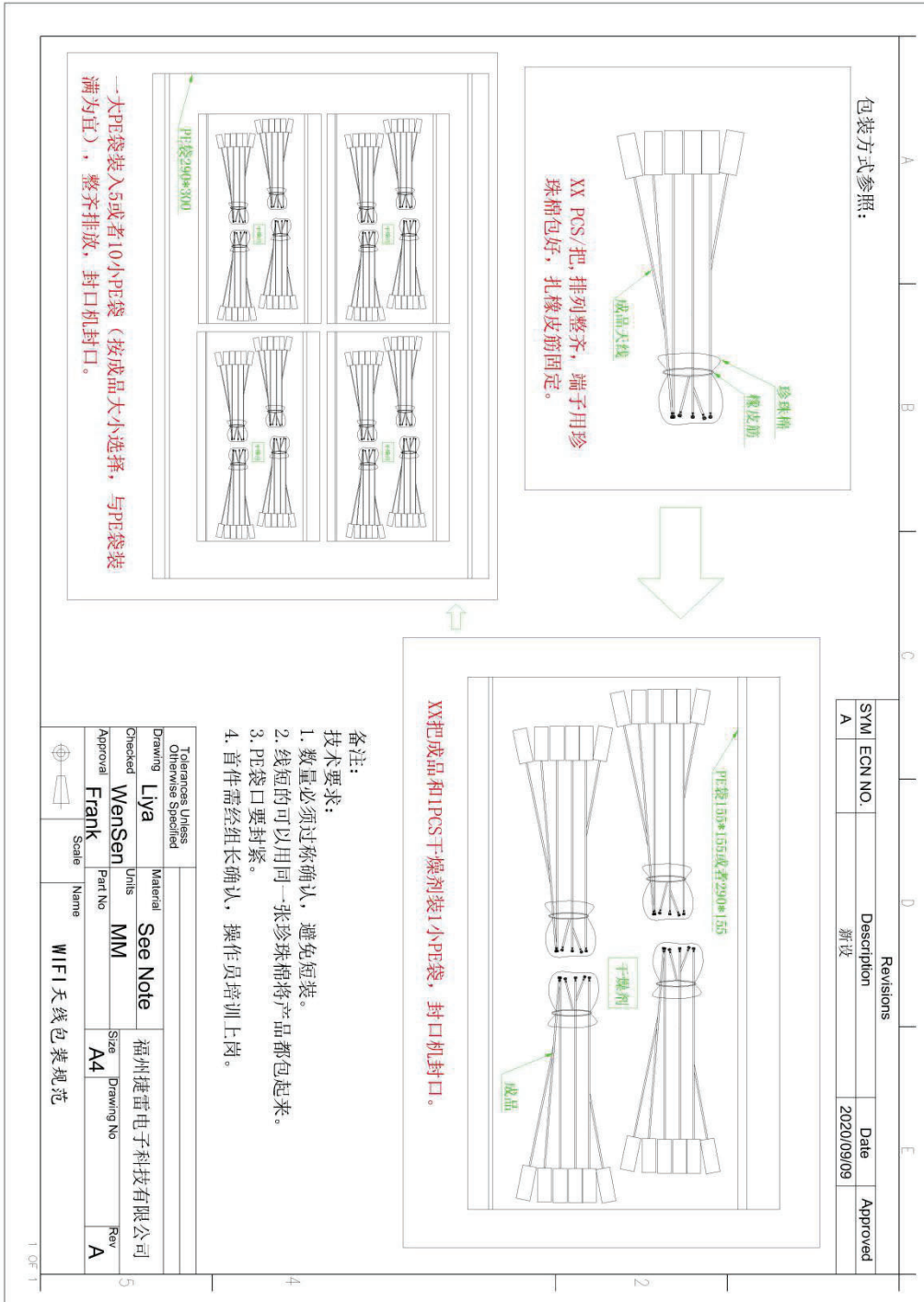
### 3. Mechanical Dimension Drawing

NDS-5.8G Ant\_ C168-JL-6149 V1.0



## 4.Packing Specification

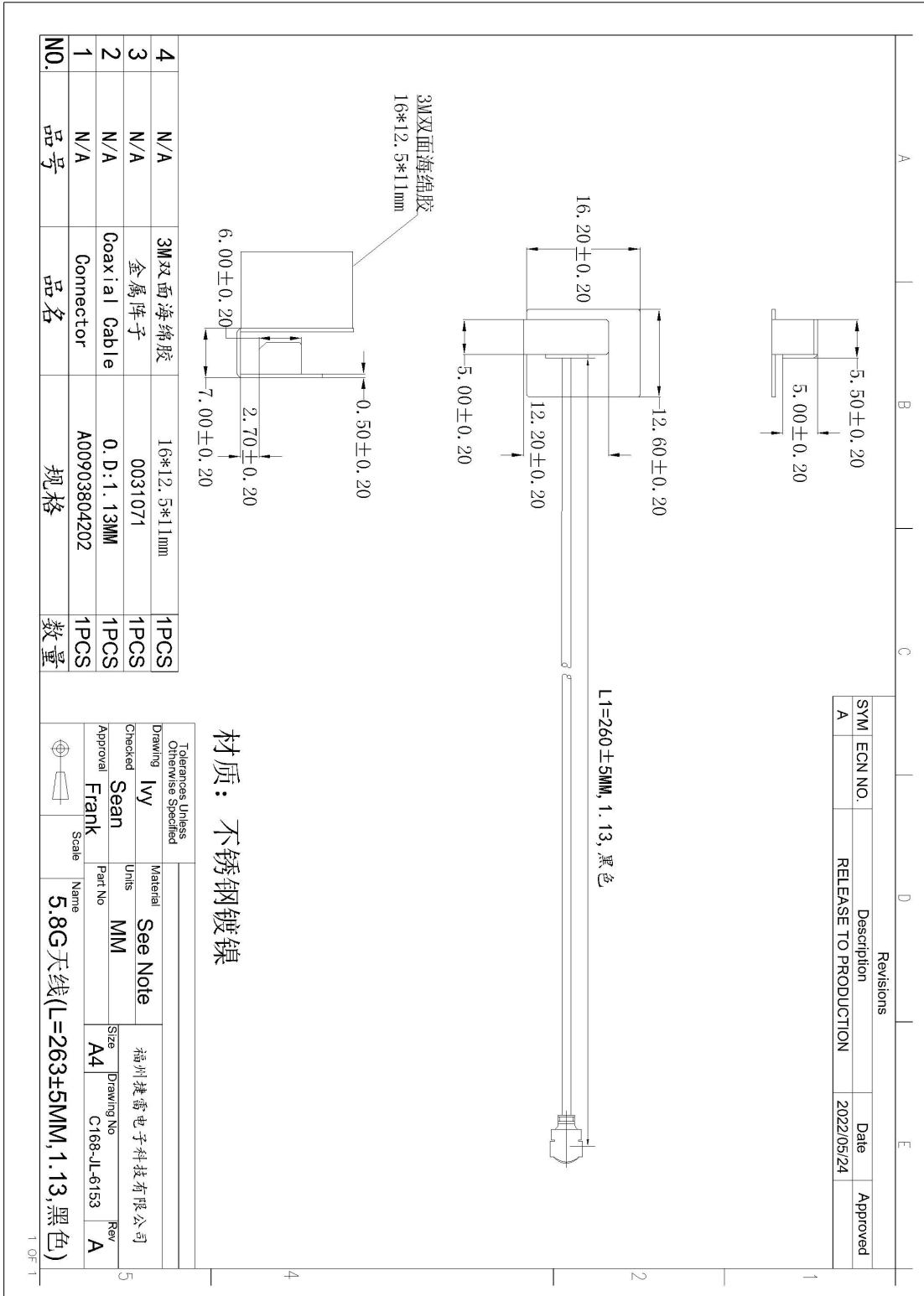
NDS-5.8G Ant\_ C168-JL-6149 V1.0



Packing 参照图

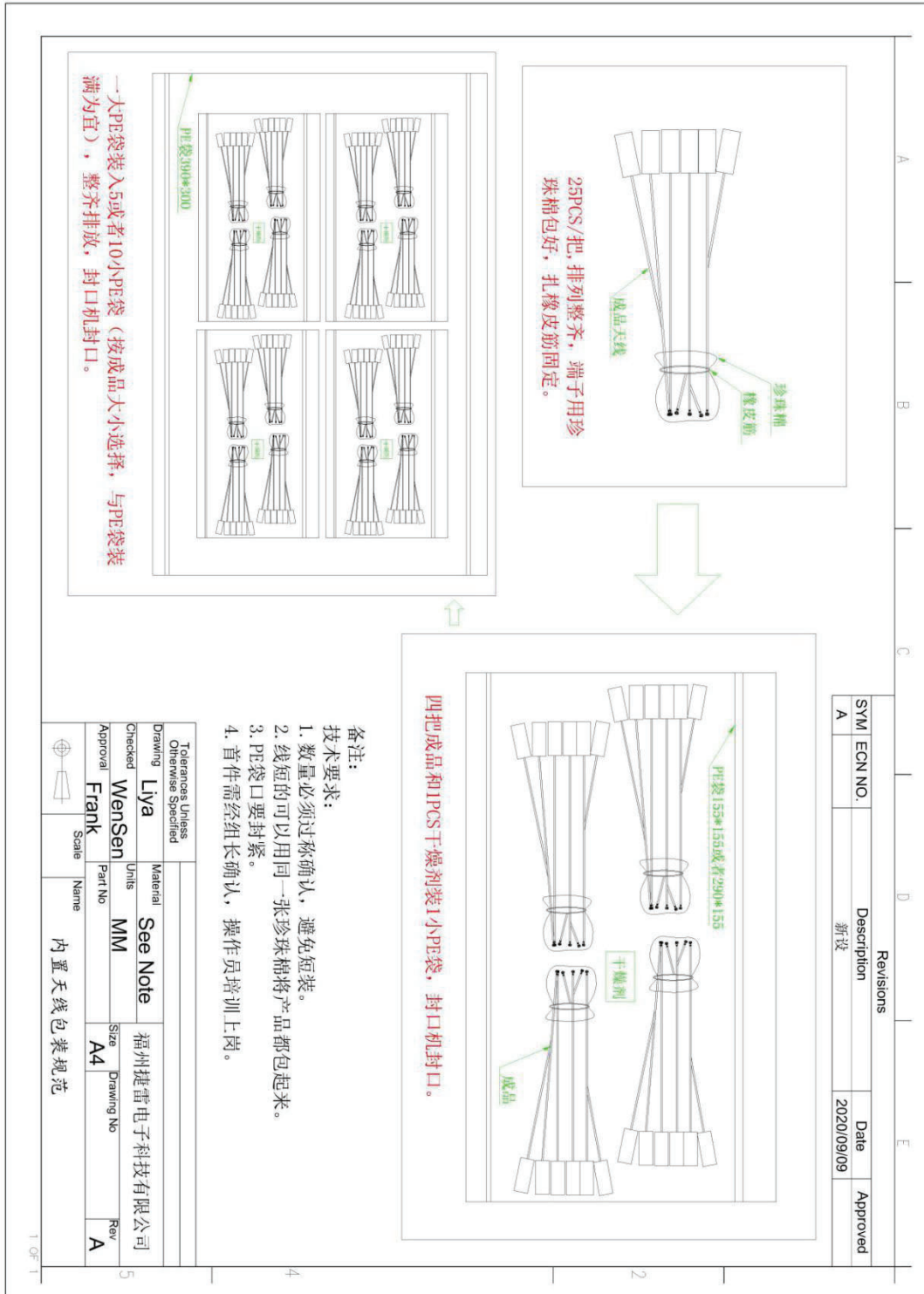
### 3. Mechanical Dimension Drawing

NDS-5.8G Ant\_ C168-JL-6153 V1.0



# 4.Packing Specification

NDS-5.8G Ant\_ C168-JL-6153 V1.0



Packing 参照图