



1. Electrical Performance

A.Electrical Characteristics	
S.W.R	$\leq 2.0@5150-5850\text{MHz}$
Frequency Range(MHz)	5150-5850MHz
Impedance	50 Ohm
Gain	MAX: 4.67dBi@5150-5850MHz
B.Material	
Connector	IPEX
Cable Length	95MM
Cable	1.13
C.Environmental	
Operation Temperature	-20°C~65°C
Storage Temperature	

2. Measurement Setup

(1) Reflection coefficient Measurement:

(a) **Instrument:** Network Analyzer

(b) Setup:

(I) Calibrate the Network Analyzer by one port calibration using Agilent calibration kits.

(II) Connect the antenna under test to the Network Analyzer

(III) Measure the S11 (reflection coefficient) shown in Fig.1

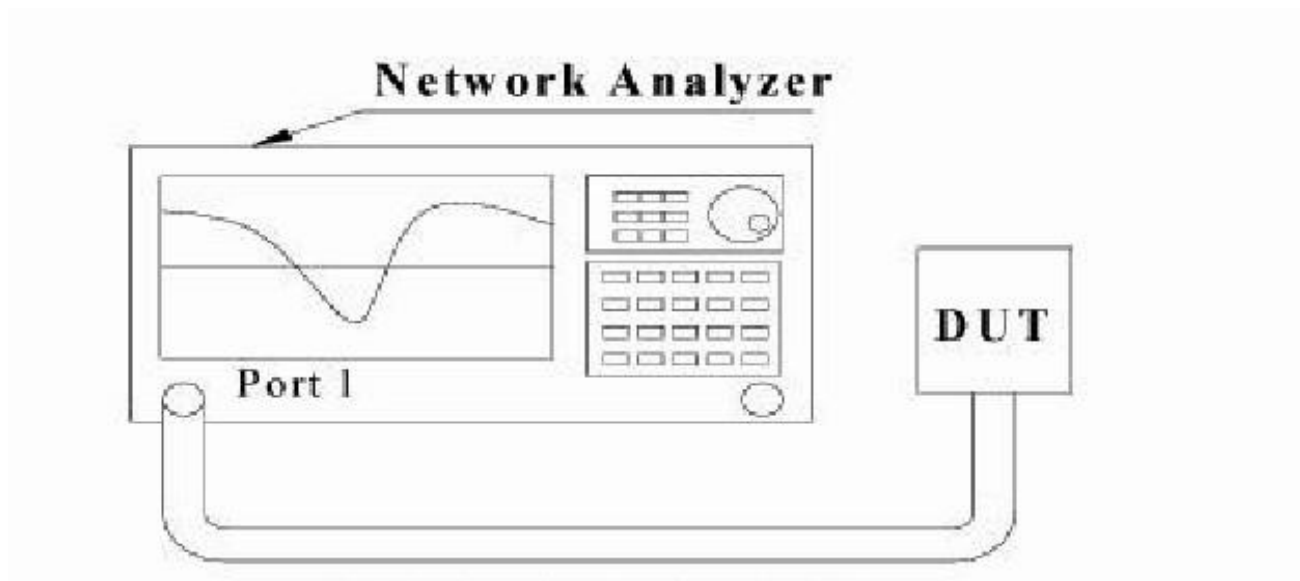


Fig. 1 Measure S11 on Network Analyze



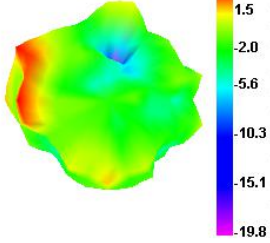
福州捷雷电子科技有限公司
Fuzhou JieLei Electronic Technology Co.,Ltd.

文档编码: FRKF-0007 版本: 1.1

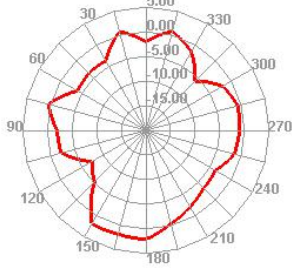
Freq (MHz)	Effi (%)	Max (dB)	Freq (MHz)	Effi (%)	Max (dB)	Freq (MHz)	Effi (%)	Max (dB)
5150	58.4	3.92	5390	57.05	3.84	5630	63.18	3.46
5160	56.59	3.93	5400	67.68	4.54	5640	62.79	3.26
5170	58.54	4.1	5410	65.46	4.43	5650	63.82	3.17
5180	58.9	4.03	5420	66.24	4.38	5660	64.42	3.09
5190	57.28	3.95	5430	67.24	4.32	5670	63.4	3.27
5200	56.15	3.92	5440	64	4.17	5680	62.85	3.2
5210	60.01	4.28	5450	64.66	4.2	5690	63.77	3.52
5220	59.07	4.3	5460	67.18	4.26	5700	64.25	3.68
5230	63.33	4.65	5470	66.29	4.4	5710	64.45	3.79
5240	59.9	4.41	5480	65.06	4.4	5720	64.3	3.92
5250	58.1	4.34	5490	64.47	4.43	5730	65.44	4.1
5260	58.23	4.35	5500	63.72	4.21	5740	67.98	4.27
5270	59.95	4.6	5510	63.41	4.34	5750	65.94	4.21
5280	59.98	4.51	5520	63.82	4.41	5760	65.1	4.15
5290	60.11	4.36	5530	64.47	4.47	5770	65.72	4.28
5300	57.1	4.24	5540	63.54	4.46	5780	67.54	4.26
5310	58.69	4.25	5550	63.76	4.44	5790	66.04	4.16
5320	60.68	4.39	5560	64.57	4.3	5800	64.9	4.39
5330	59.22	4.2	5570	63.29	4.01	5810	65.79	4.33
5340	61.9	4.35	5580	63.96	4	5820	67.99	4.67
5350	63.31	4.37	5590	62.54	3.58	5830	66.82	4.45
5360	60.32	4.37	5600	62.5	3.79	5840	65.1	4.26
5370	60.02	4.23	5610	62.52	3.48	5850	64.44	4.31
5380	60.65	4.22	5620	63.72	3.48			



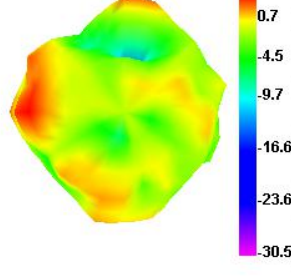
5150.000MHz



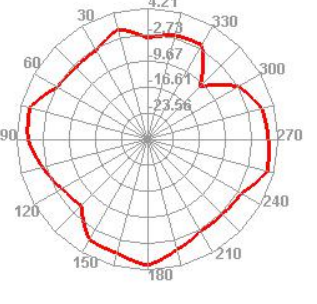
5150.000MHz H



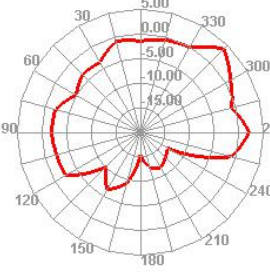
5500.000MHz



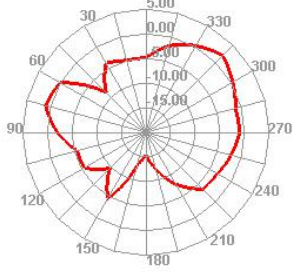
5500.000MHz H



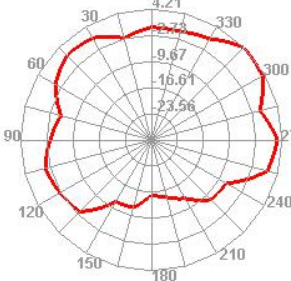
5150.000MHz E1



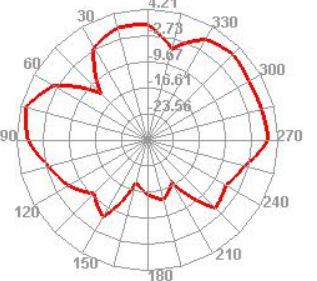
5150.000MHz E2



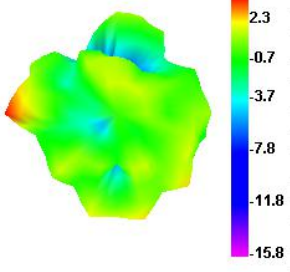
5500.000MHz E1



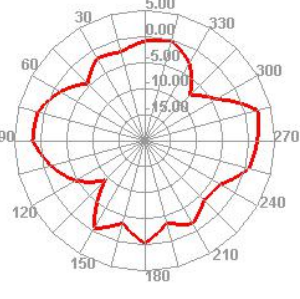
5500.000MHz E2



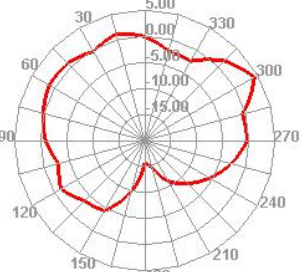
5850.000MHz



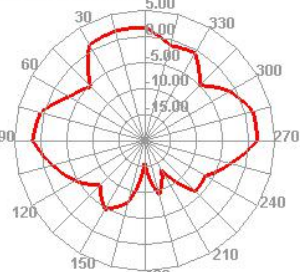
5850.000MHz H



5850.000MHz E1



5850.000MHz E2



3. Mechanical Dimension Drawing

