

Fuzhou JieLei Electronic Technology Co.,Ltd. OTA Test Report

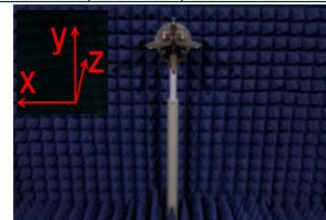


General Information

UET	Wireless Router	Model Number	RG-EG105GW-X
Antenna type	Whip antenna	Antenna Model Number	Antenna 1:C168-JL-7146, Antenna 2:C168-JL-7147
Test condition	22.2°C/ 43 %	Operation frequency	2400-2500MHz

Manufacturer:	Fuzhou JieLei Electronic Technology Co.,Ltd. OTA Test Report
Address:	R&F Center C1-1425, Taijiang District, Fuzhou City, Fujian Province

Test Setup



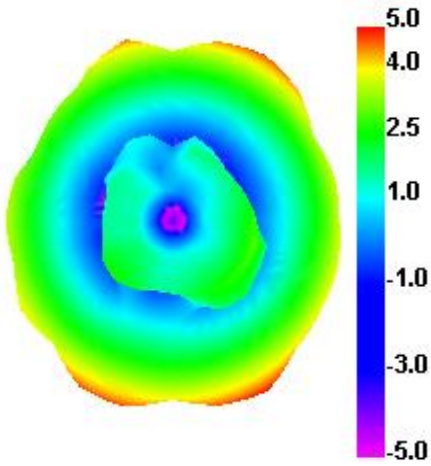
H: xoy
 E1: xoz
 E2: zoy

Test Result

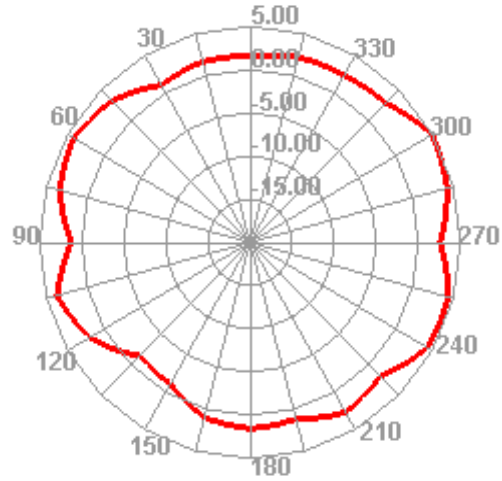
Freq (MHz)	Effi (%)	Gain (dBi)	Freq (MHz)	Effi (%)	Gain (dBi)	Freq (MHz)	Effi (%)	Gain (dBi)
2400	64.37	4.98	2400	60.14	4.91			
2410	62.61	4.63	2410	58.51	4.72			
2420	60.82	4.38	2420	56.3	4.42			
2430	63.26	4.93	2430	57.88	4.46			
2440	61.99	4.68	2440	56.22	4.25			
2450	60.57	4.66	2450	54.78	4.09			
2460	60.24	4.67	2460	54.44	4			
2470	60.37	4.67	2470	55.18	3.98			
2480	58.74	4.45	2480	53.94	3.82			
2490	56.22	4.08	2490	51.06	3.4			
2500	55.61	3.9	2500	50.96	3.4			
2.4G Antenna 1			2.4G Antenna 2					

2.4G Antenna 1

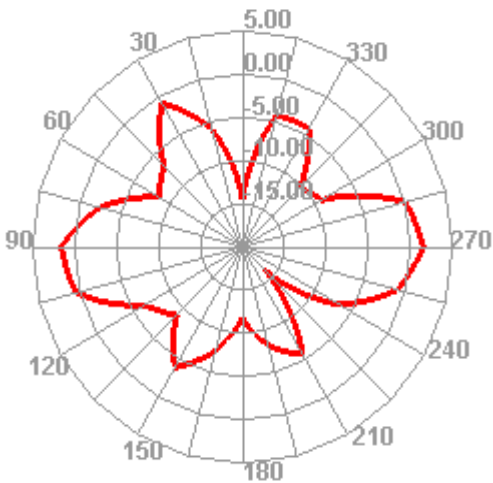
2400.000MHz



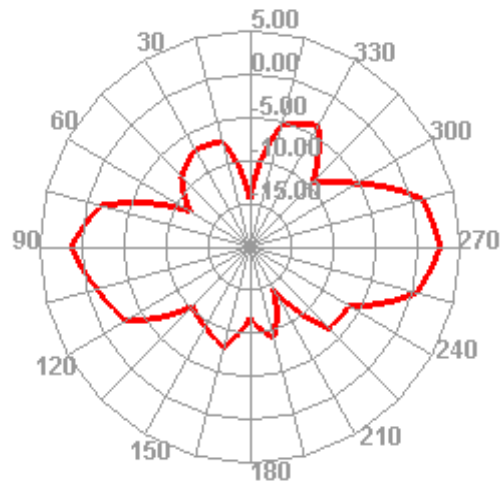
2400.000MHz H



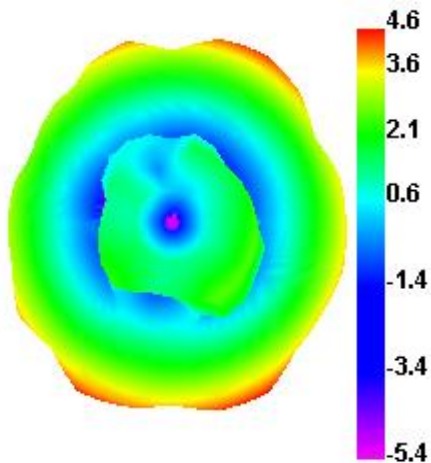
2400.000MHz E1



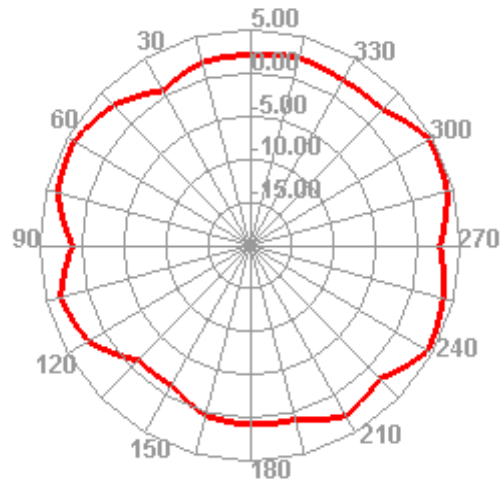
2400.000MHz E2



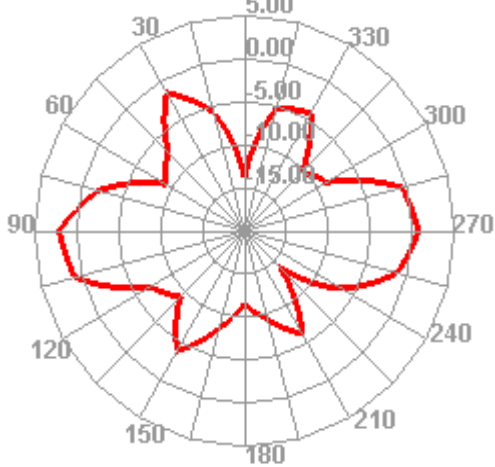
2410.000MHz



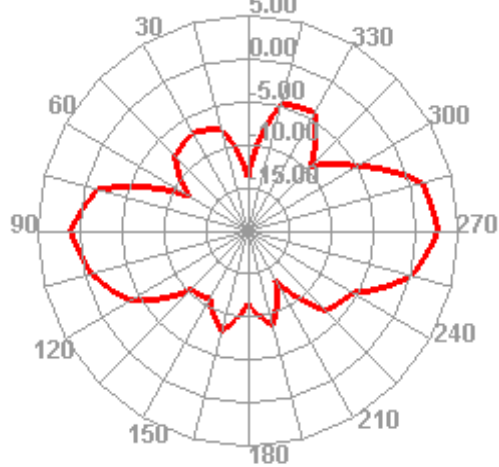
2410.000MHz H



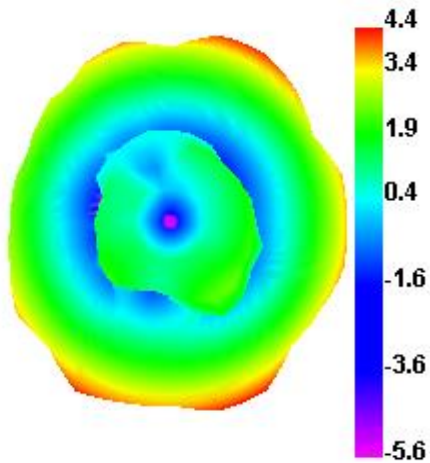
2410.000MHz E1



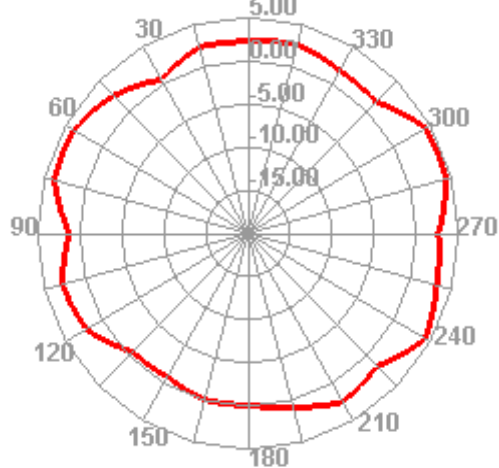
2410.000MHz E2



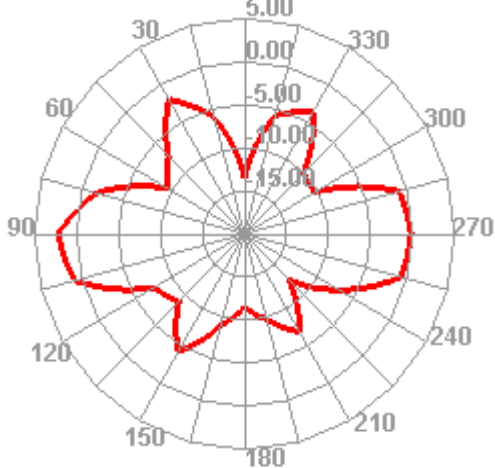
2420.000MHz



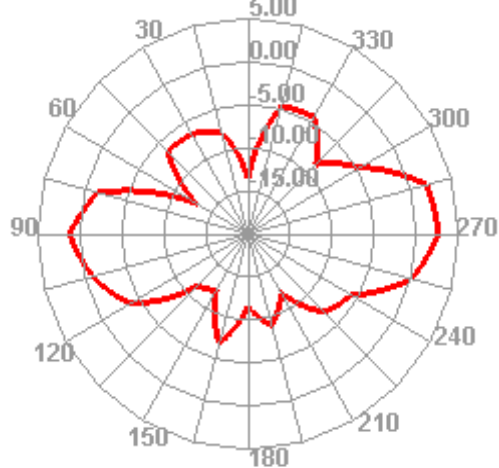
2420.000MHz H



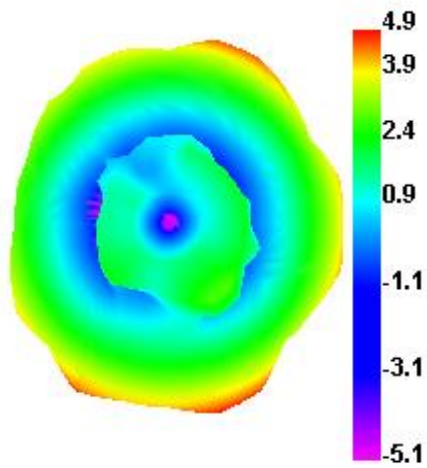
2420.000MHz E1



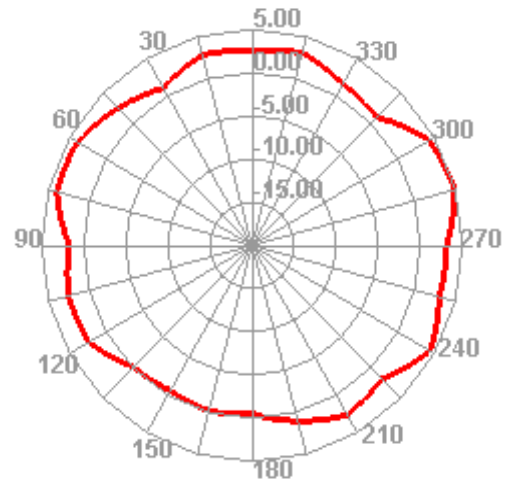
2420.000MHz E2



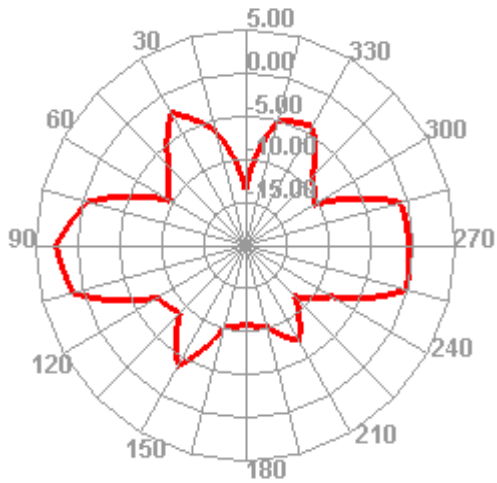
2430.000MHz



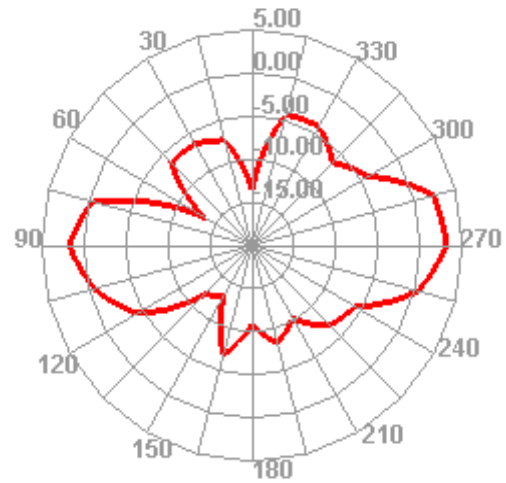
2430.000MHz H



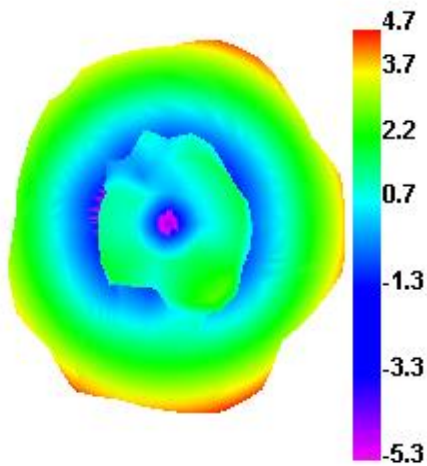
2430.000MHz E1



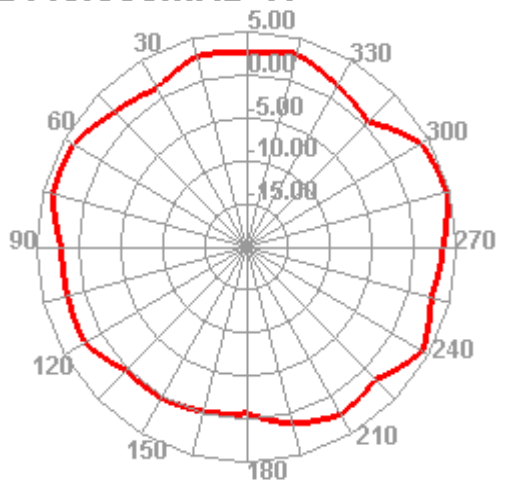
2430.000MHz E2



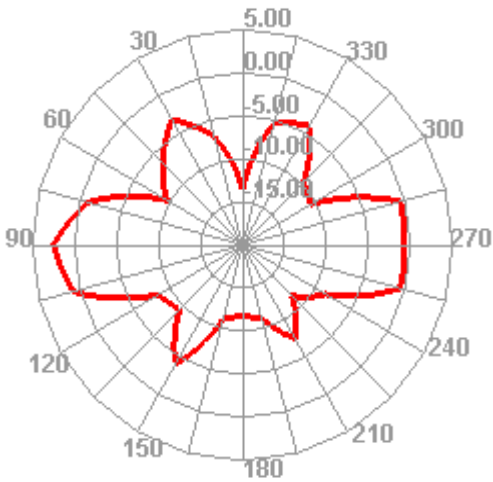
2440.000MHz



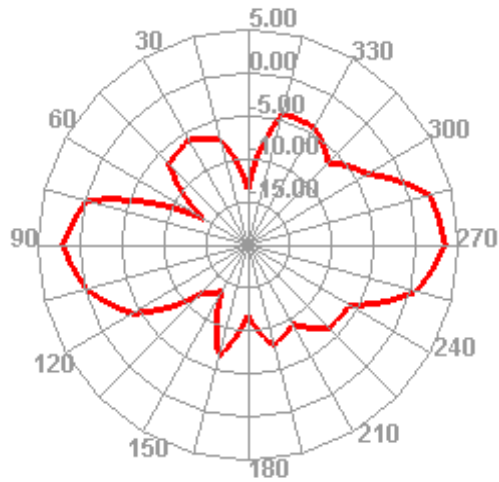
2440.000MHz H



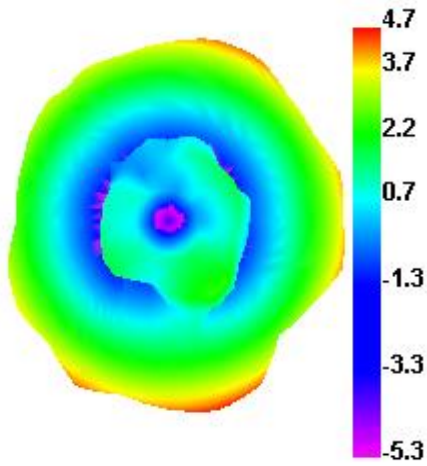
2440.000MHz E1



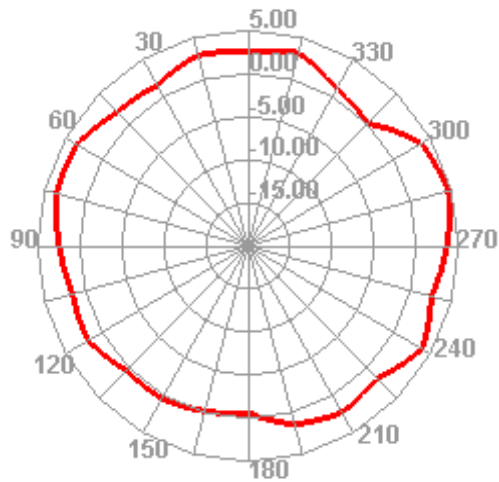
2440.000MHz E2



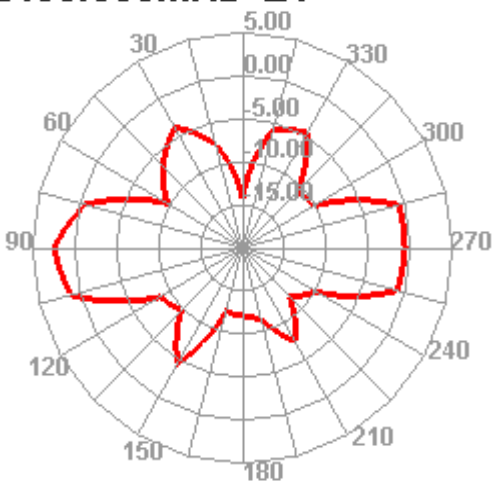
2450.000MHz



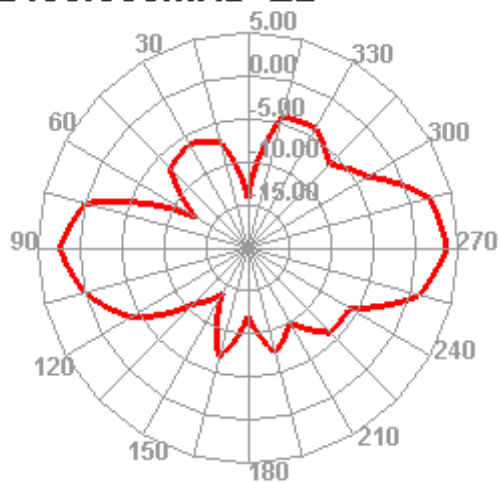
2450.000MHz H



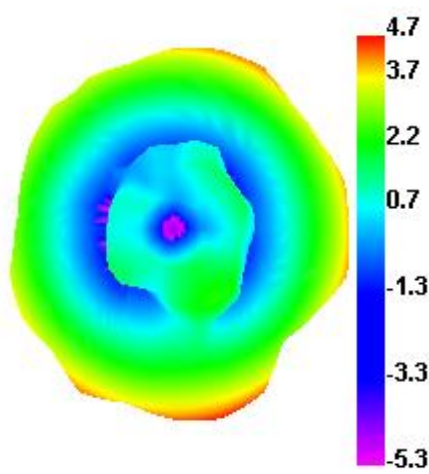
2450.000MHz E1



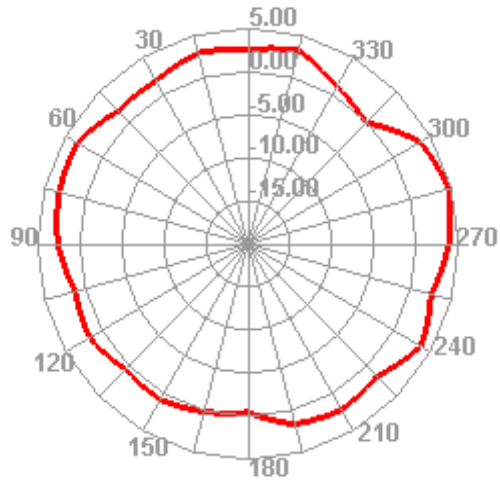
2450.000MHz E2



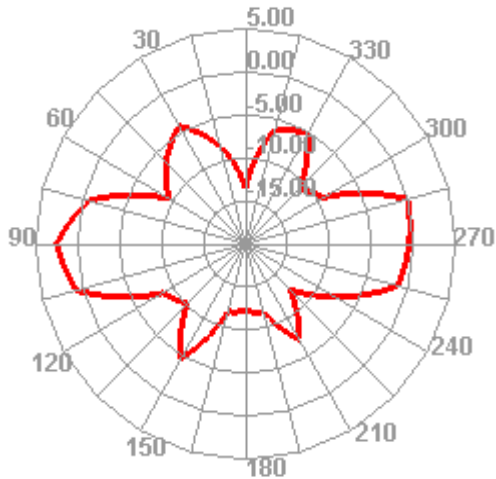
2460.000MHz



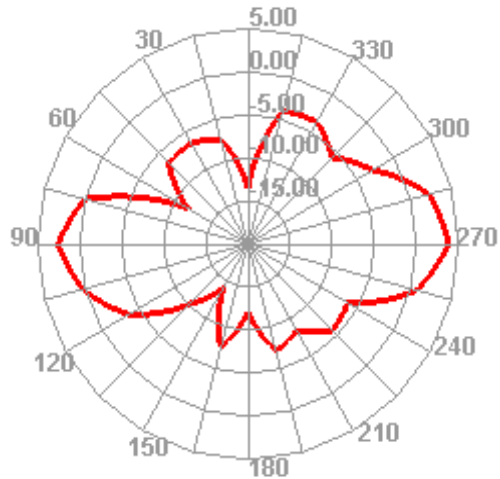
2460.000MHz H



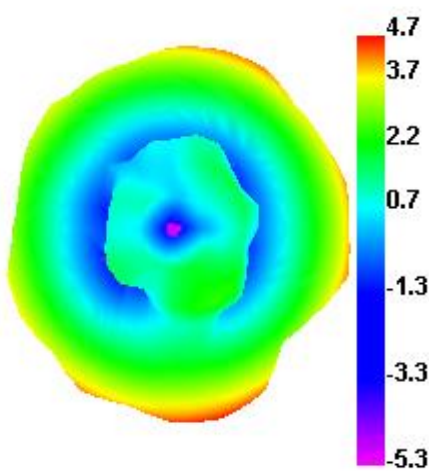
2460.000MHz E1



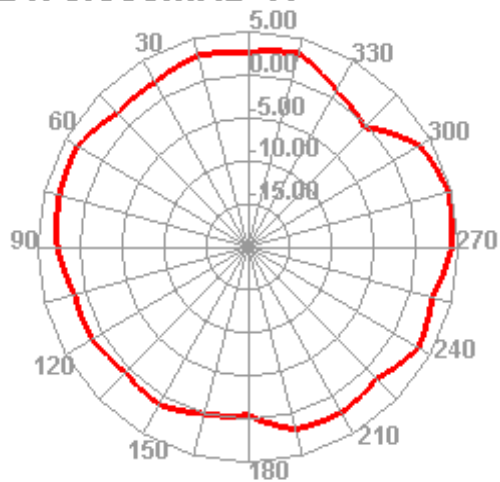
2460.000MHz E2



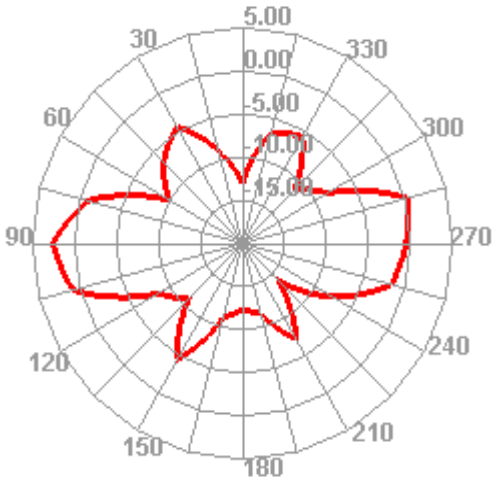
2470.000MHz



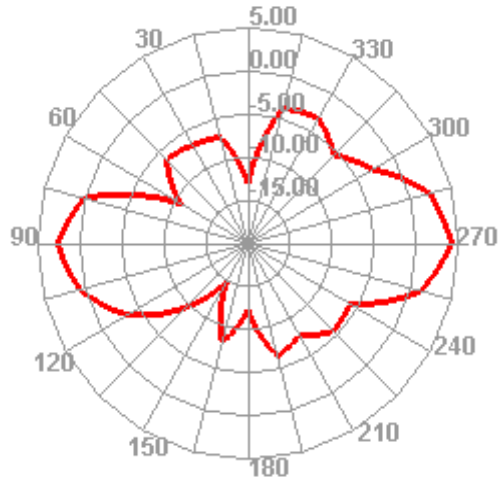
2470.000MHz H



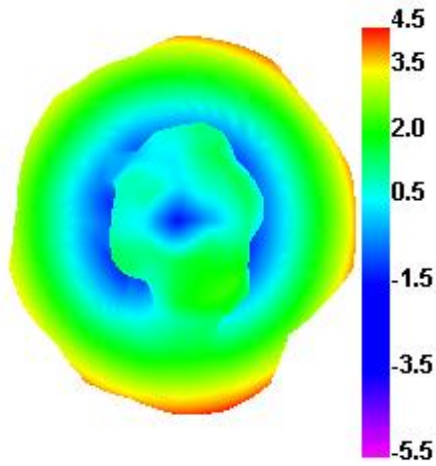
2470.000MHz E1



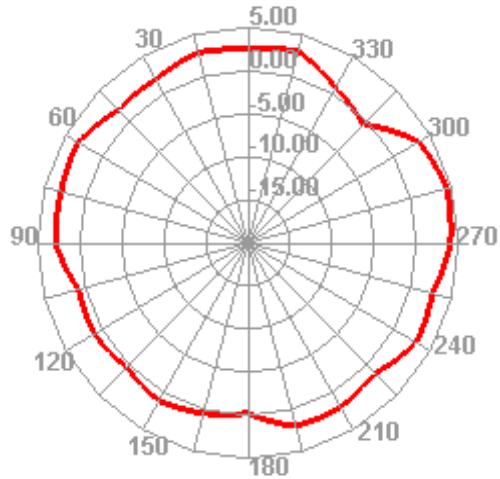
2470.000MHz E2



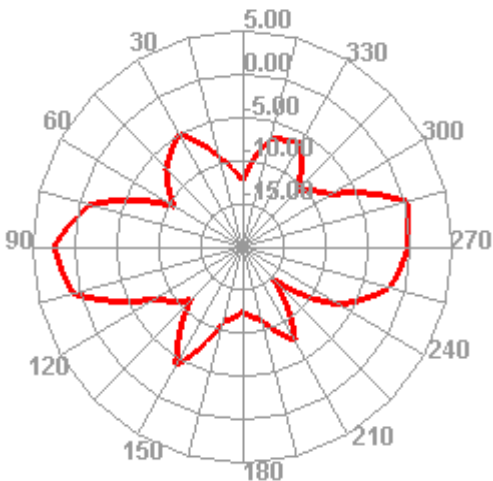
2480.000MHz



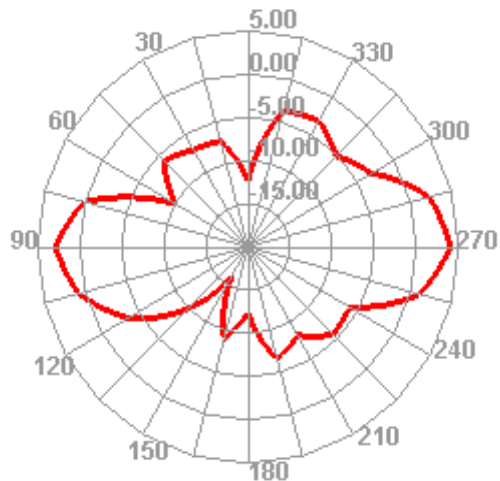
2480.000MHz H



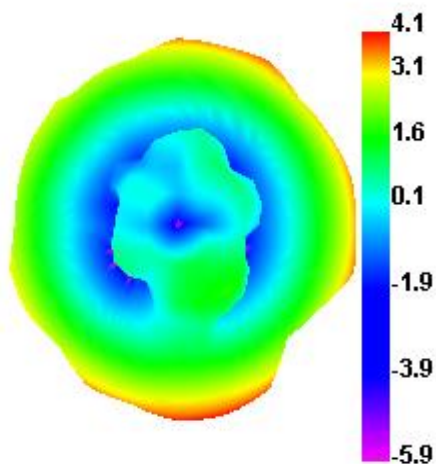
2480.000MHz E1



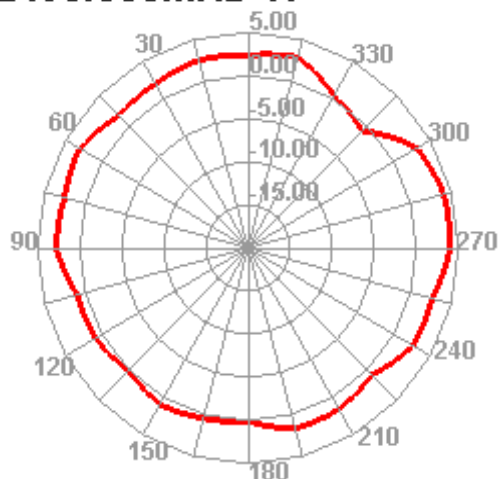
2480.000MHz E2



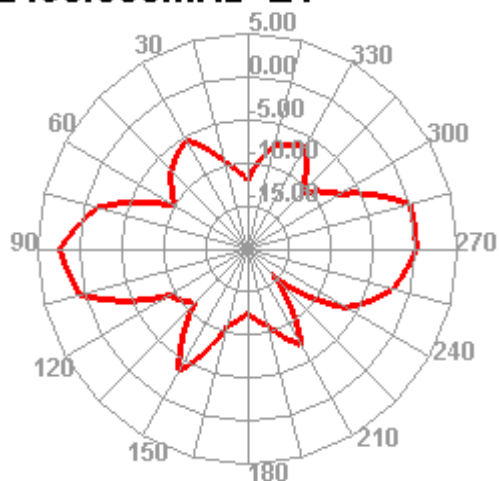
2490.000MHz



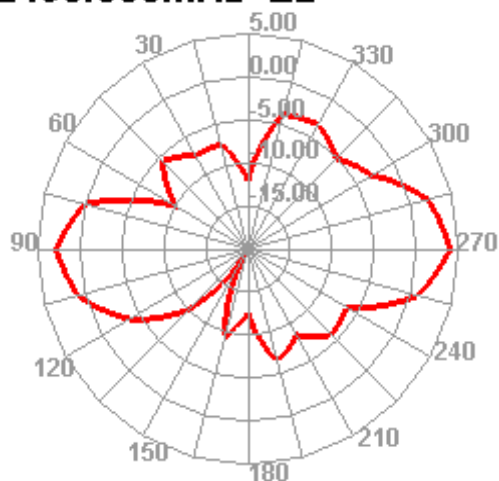
2490.000MHz H



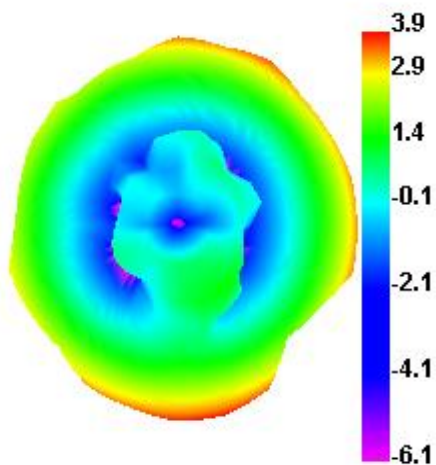
2490.000MHz E1



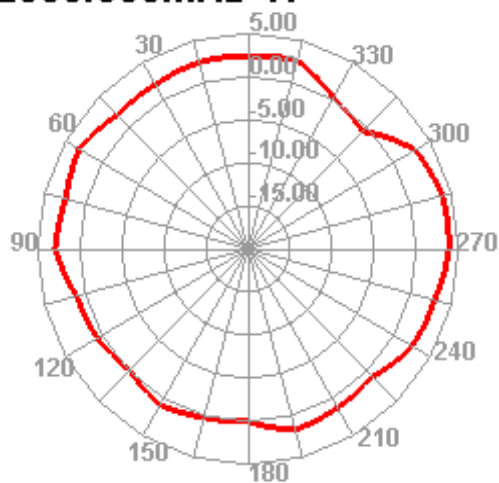
2490.000MHz E2



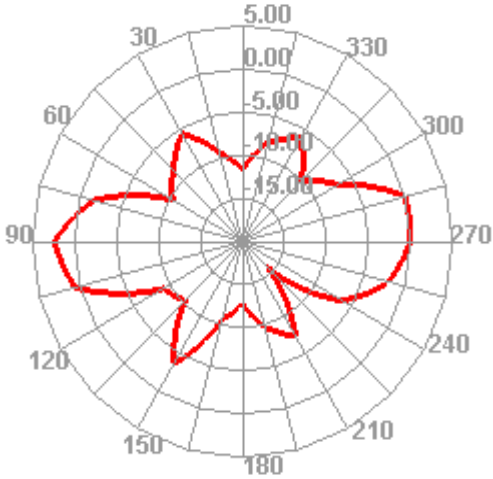
2500.000MHz



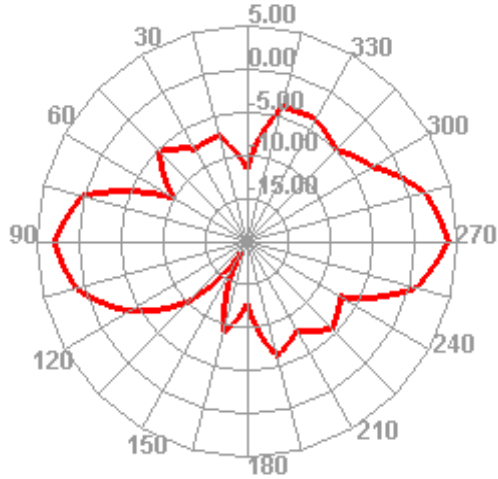
2500.000MHz H



2500.000MHz E1



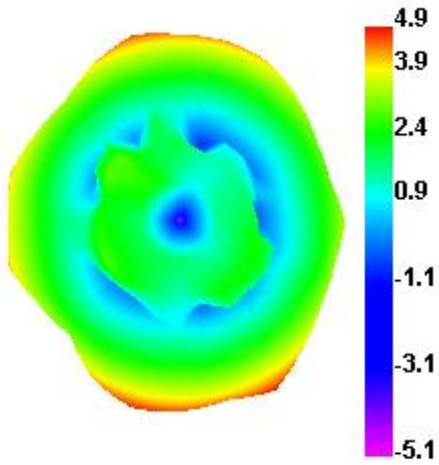
2500.000MHz E2



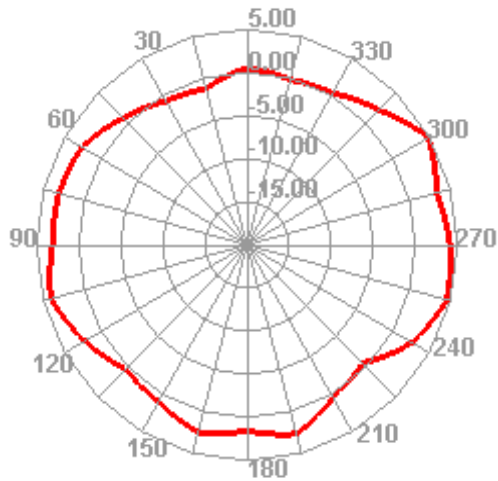
Fuzhou JieLei Electronic Technology Co.,Ltd. OTA Test Report

2.4G Antenna 2

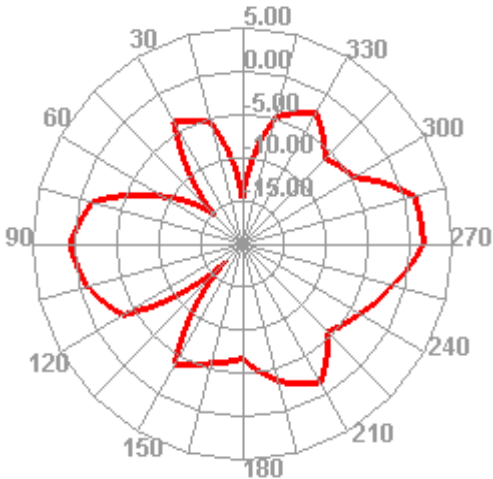
2400.000MHz



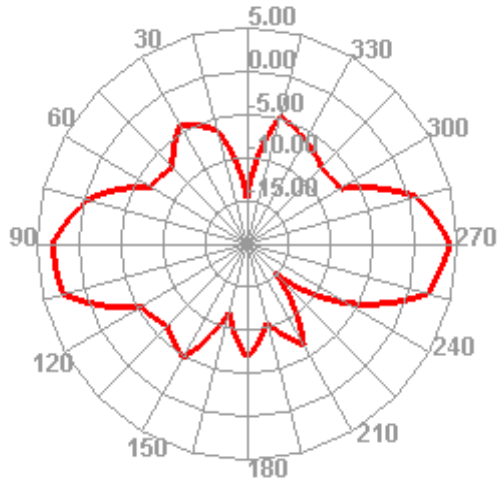
2400.000MHz H



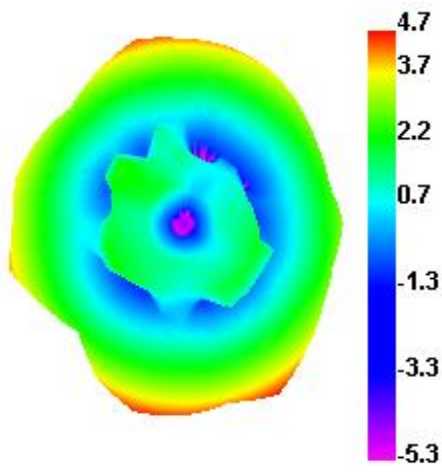
2400.000MHz E1



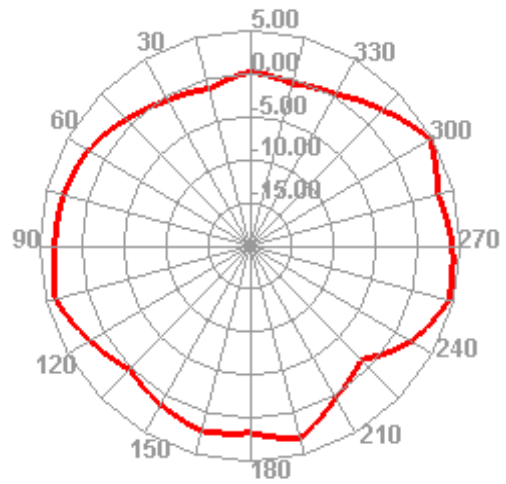
2400.000MHz E2



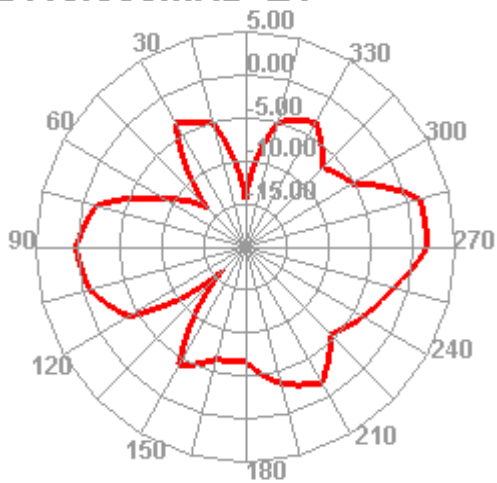
2410.000MHz



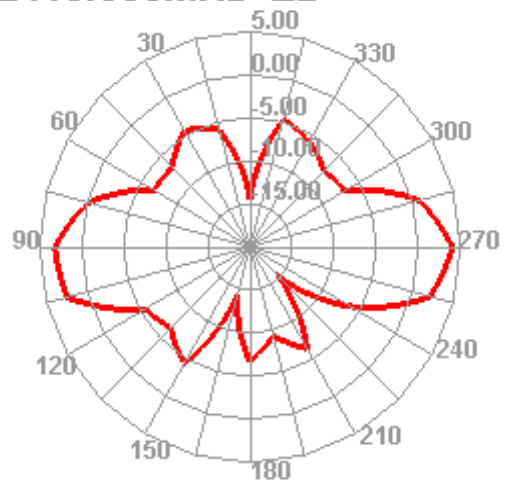
2410.000MHz H



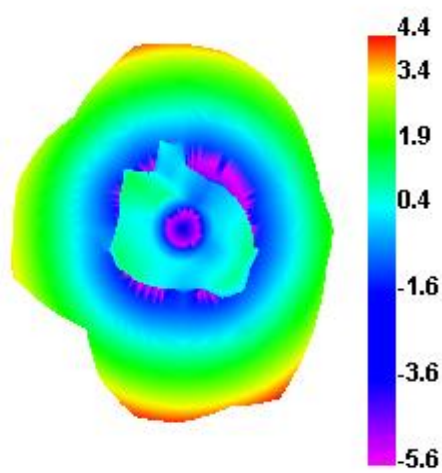
2410.000MHz E1



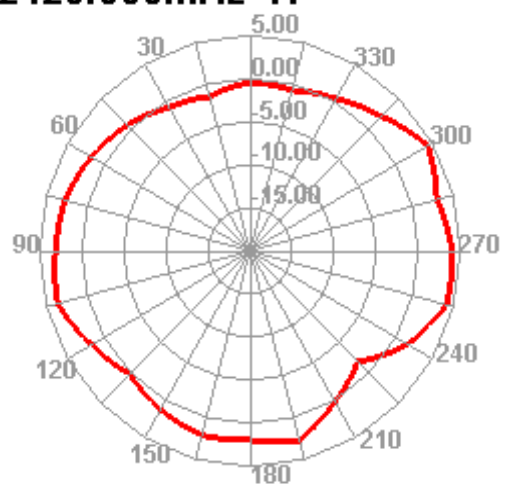
2410.000MHz E2



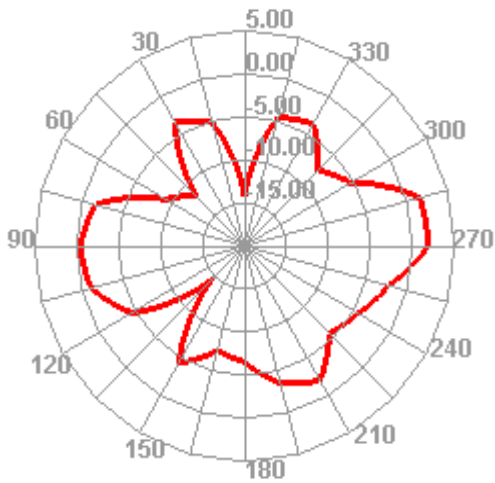
2420.000MHz



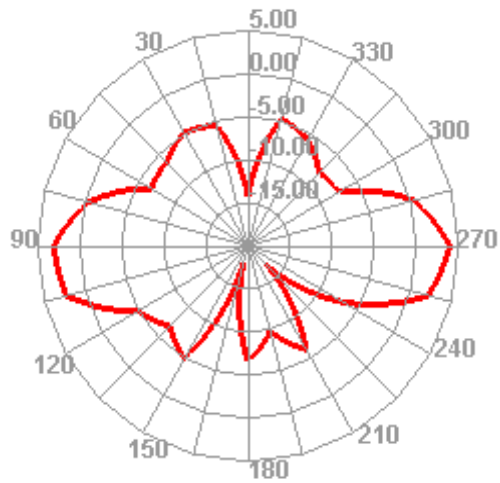
2420.000MHz H



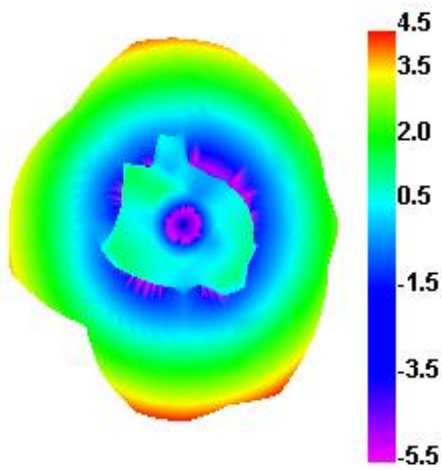
2420.000MHz E1



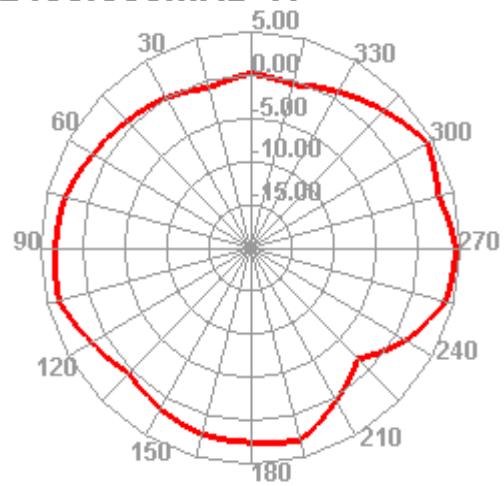
2420.000MHz E2



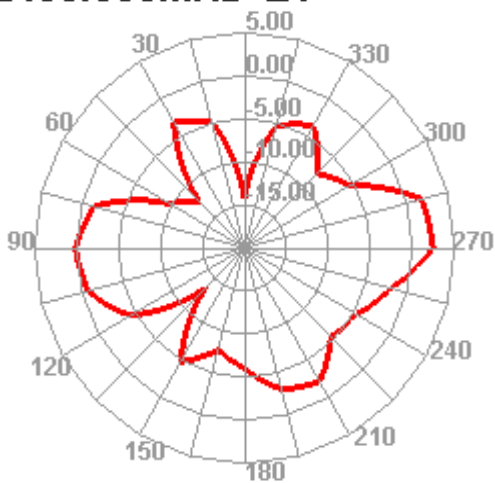
2430.000MHz



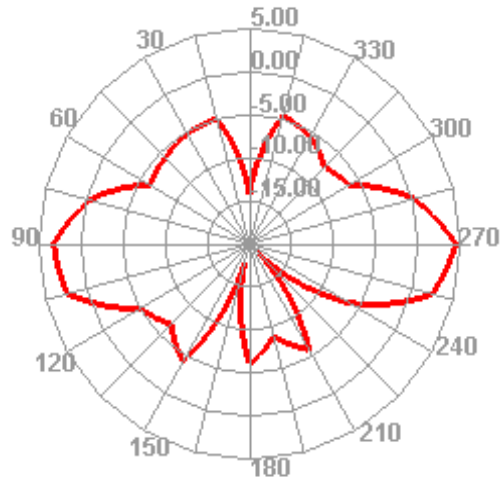
2430.000MHz H



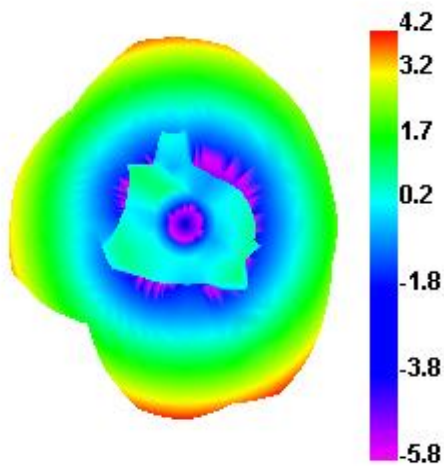
2430.000MHz E1



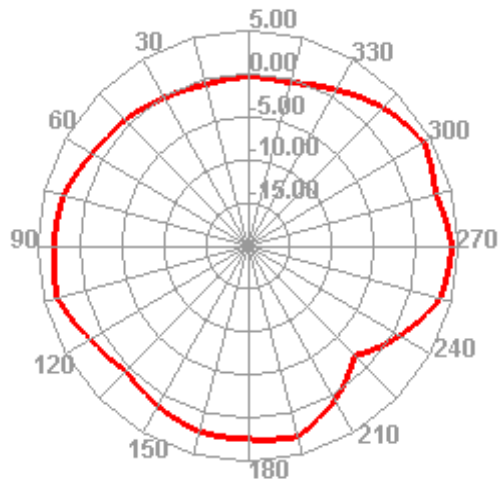
2430.000MHz E2



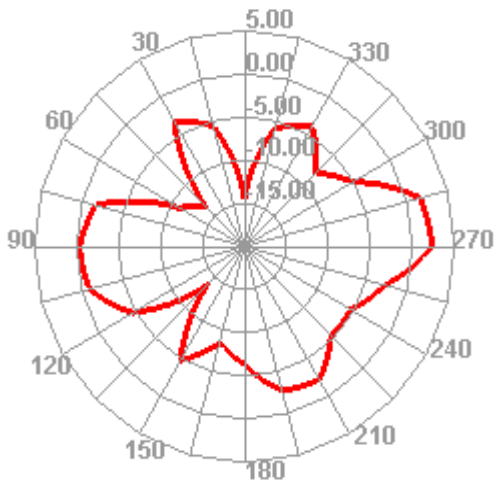
2440.000MHz



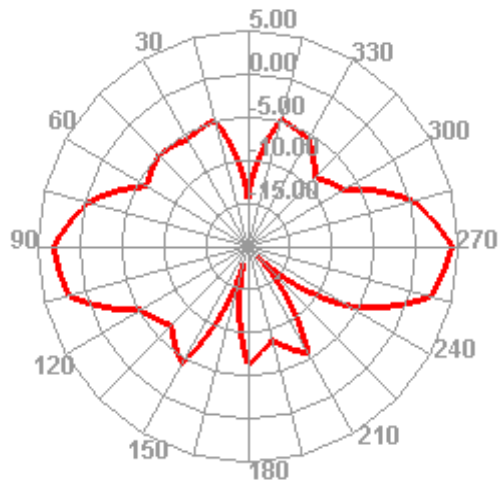
2440.000MHz H



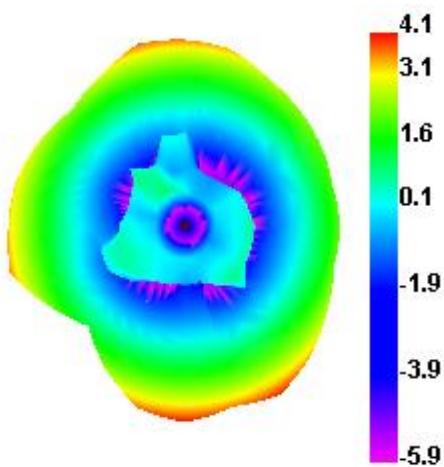
2440.000MHz E1



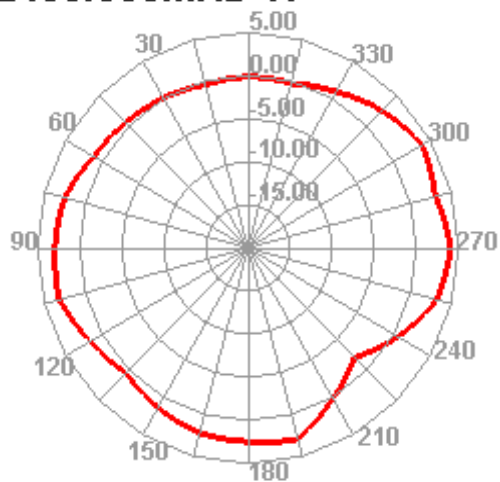
2440.000MHz E2



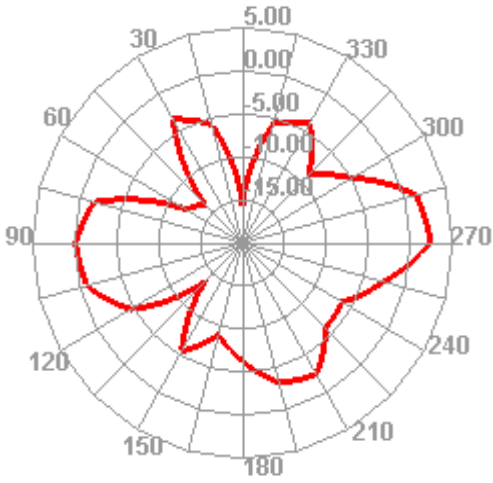
2450.000MHz



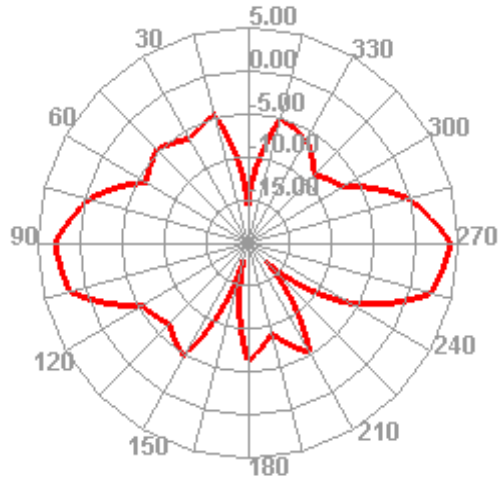
2450.000MHz H



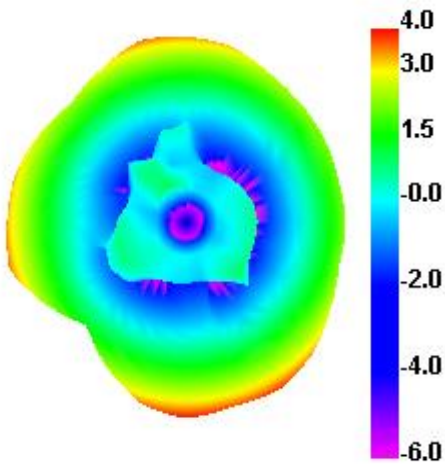
2450.000MHz E1



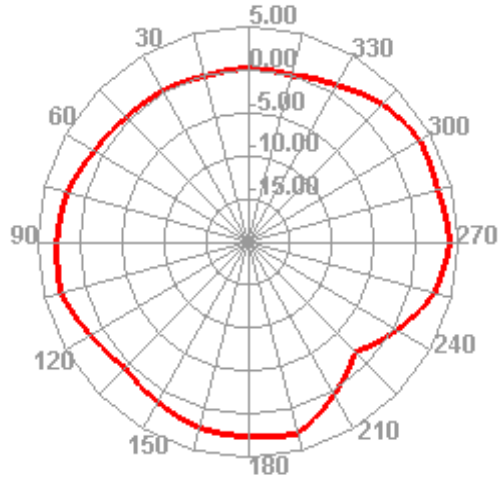
2450.000MHz E2



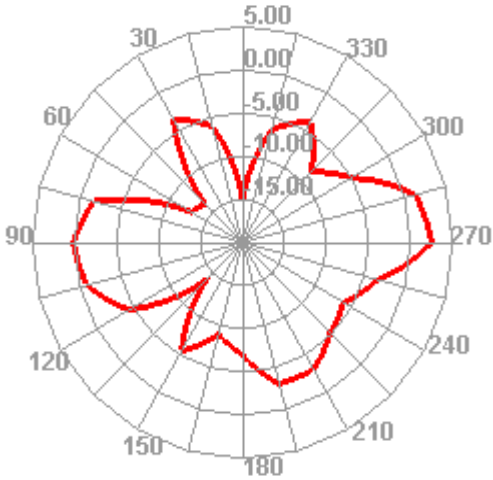
2460.000MHz



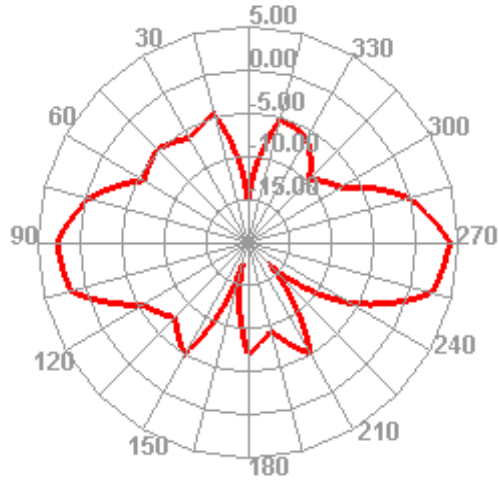
2460.000MHz H



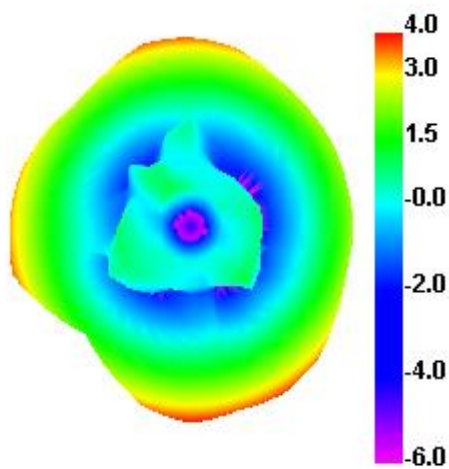
2460.000MHz E1



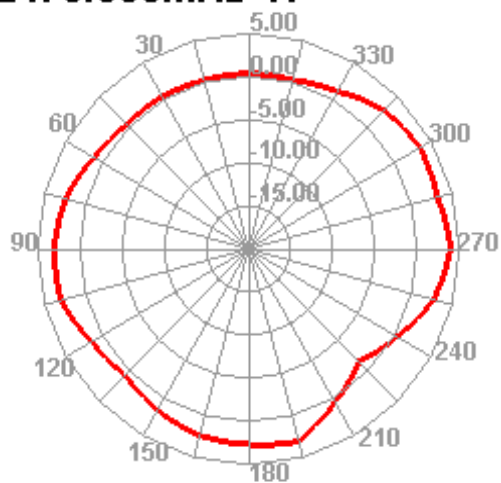
2460.000MHz E2



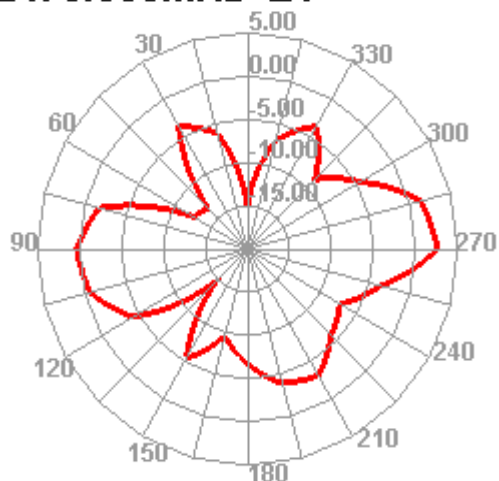
2470.000MHz



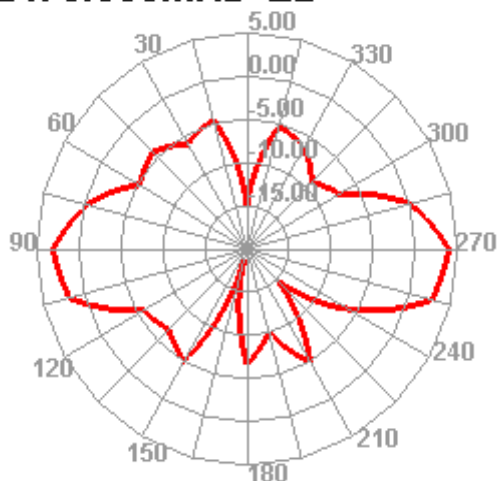
2470.000MHz H



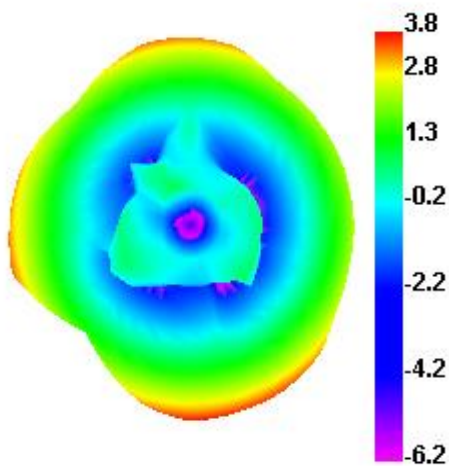
2470.000MHz E1



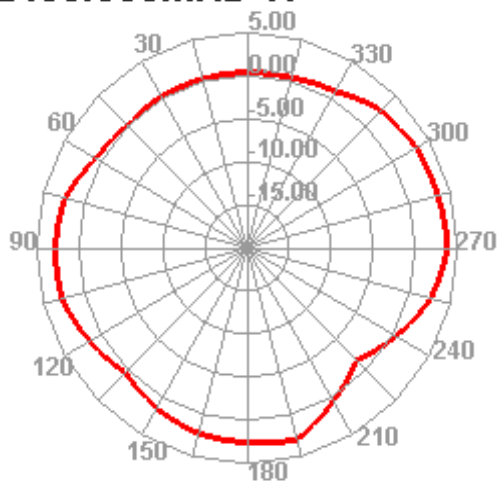
2470.000MHz E2



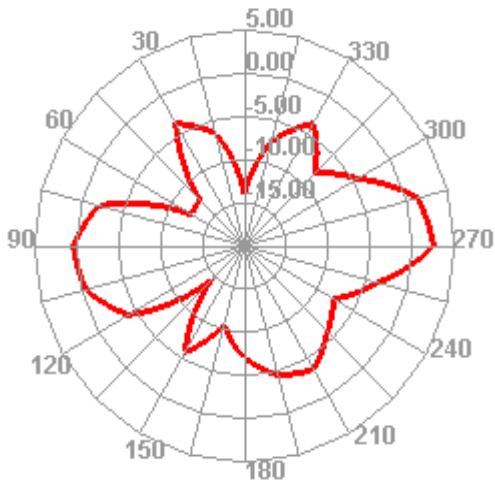
2480.000MHz



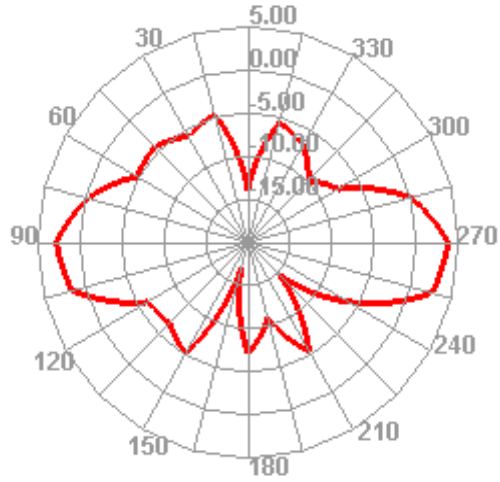
2480.000MHz H



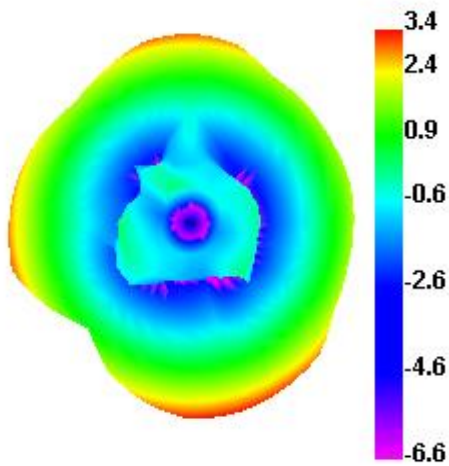
2480.000MHz E1



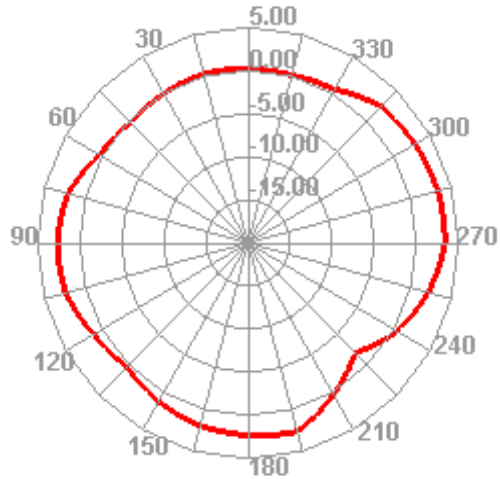
2480.000MHz E2



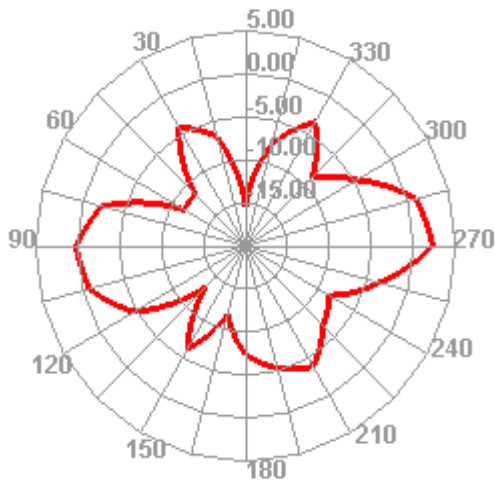
2490.000MHz



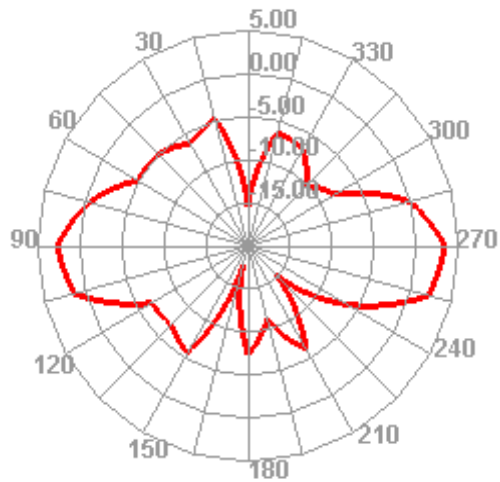
2490.000MHz H



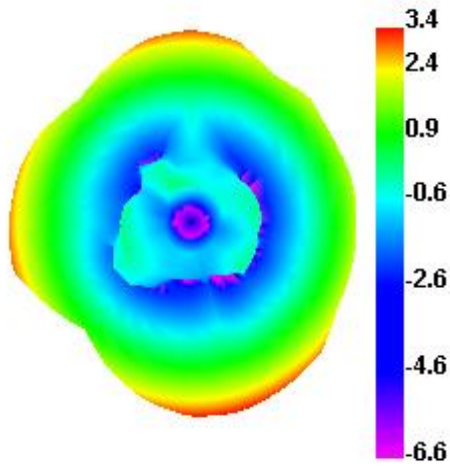
2490.000MHz E1



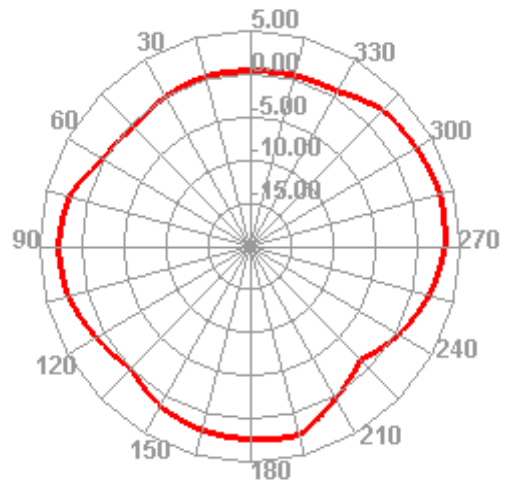
2490.000MHz E2



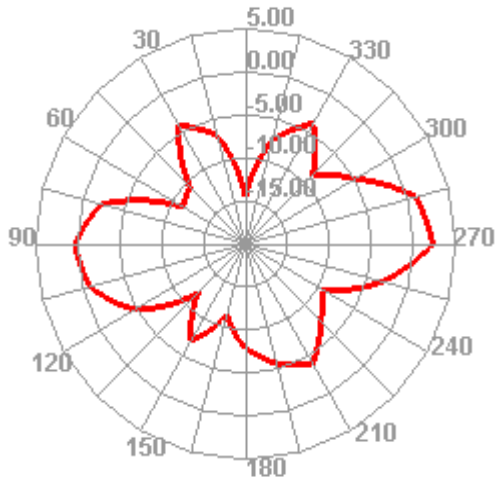
2500.000MHz



2500.000MHz H



2500.000MHz E1



2500.000MHz E2

