



Wireless Display Receiver

Quick Start Guide

Thank you for buying our Wecast wireless display receiver. You can read the manual to get a comprehensive understanding for it and enjoy the actual function and easy operation.

Wecast wireless display receiver is mainly used to cast the small screen to big screen it works with the most of (Android/IOS) phones and tablets, Windows8.1 or above laptop, Mac10.8 or above laptop. it can synchronously push the videos, musics, photos, documents and games to TV and projector, suitable for home entertainment, business meetings, education, training and etc.

Our company reserves that we will not inform you while the manual content revised time to time.

1. Connecting devices

- 1.1 Connecting the Wecast wireless display receiver to the TV or projector with HDMI port as follows:



Note: pls check whether the USB Port of TV or projector is workable or not. If not, please use USB cable to connect the USB power adapter to charge the wecast wireless display receiver.

- 1.2 please set the TV or projector's output mode to HDMI and connect with wecast display receiver to watch the wecast menu.



2. Notice

- 2.1 If long time not use the wecast wireless display receiver, please unplug the usb power cable to save electricity.
- 2.2 Please put the wecast wireless display receiver in a relatively good signal environment, then it can be ensure that the interaction among the wecast wireless display receiver, the android/iOS devices and WIFI router/hotspots have the good bandwidth and low latency wireless signal.
- 2.3 please make sure that wifi signal is strong enough between wifi router, wecast wireless display receiver and portable smart phone/laptop/windows8.1/Mac10.8 laptop.
- 2.4 The latest firmware will be updated automatically time to time online while the wecast wireless display receiver connecting well with internet.

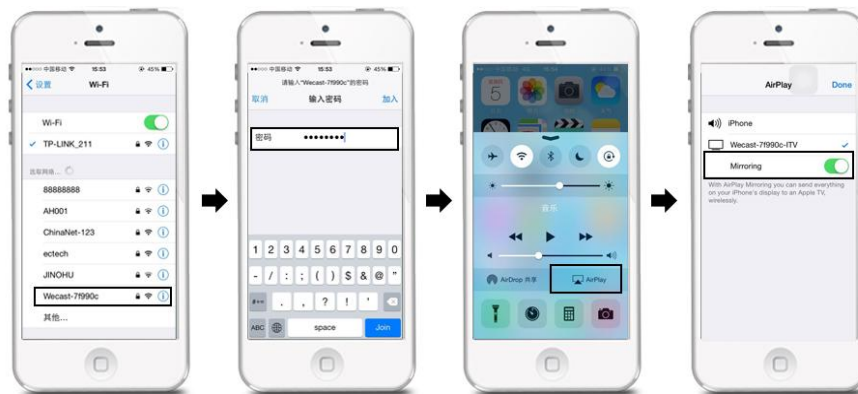
3. iOS devices Setting Quick Start Guide

3.1 Short press the mode button of Wecast wireless display receiver and switch to DLNA mode



3.2 The iOS devices airplay and airplay mirroring function setting

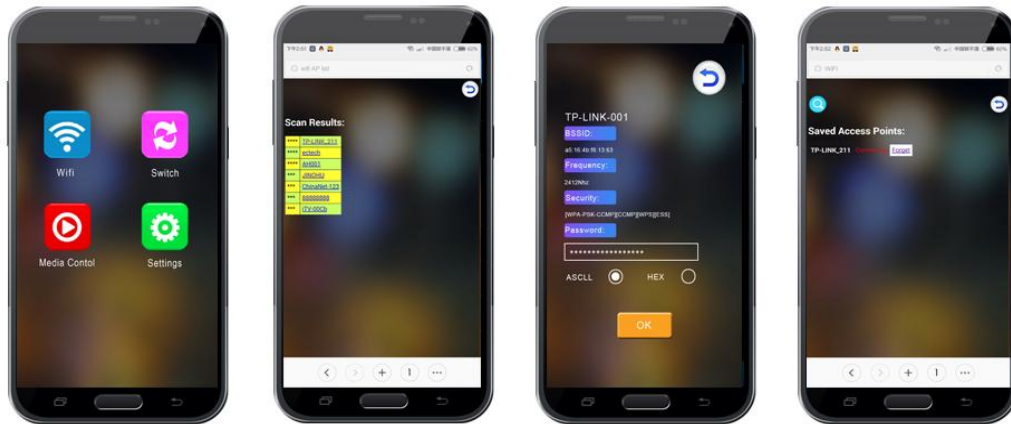
Open the WIFI of the iOS devices, search and connect to Wecast wireless display receiver SSID wecast - XXXXX (the default password: 12345678), back to the desktop, upper the home screen menu of iOS devices, Enter into airplay mode and press Airplay or airplay mirroring function to cast or mirror the local video, audio,image and online video from iOS devices to TV or projector.



3.3 If want to connect to the Internet and stream the online video by Wecast wireless display receiver, you need to setup as follows:

- 1) follow up the steps 3.2 to connect well between the wecast wireless display receiver and ipone/ipad/ipod devices.

- 2) Using the smart phone to scan the QR code of the wecast menu or Run the mobile browser and input <http://192.168.49.1> to access to setting menu and then click wifi icon to make the wifi connection step by step as follows



- 3) After connecting well, The wifi icon will display as follows



4: Android Device Setting Quick Start Guide

4.1 Pls check with your android device vender if it can support with the miracast or not. if supported, Short press the Wecast wireless display receiver mode button to switch to the Miracast mode



4.2 Open the android device's wifi,then come to screenshare menu to Select Wecast wireless display receiver SSID Wecast - XXXXX and connect to the Miracast function as follows:



4.3 it will be automatically connected and display to the tv screen



4.4 DLNA mode setting for android device

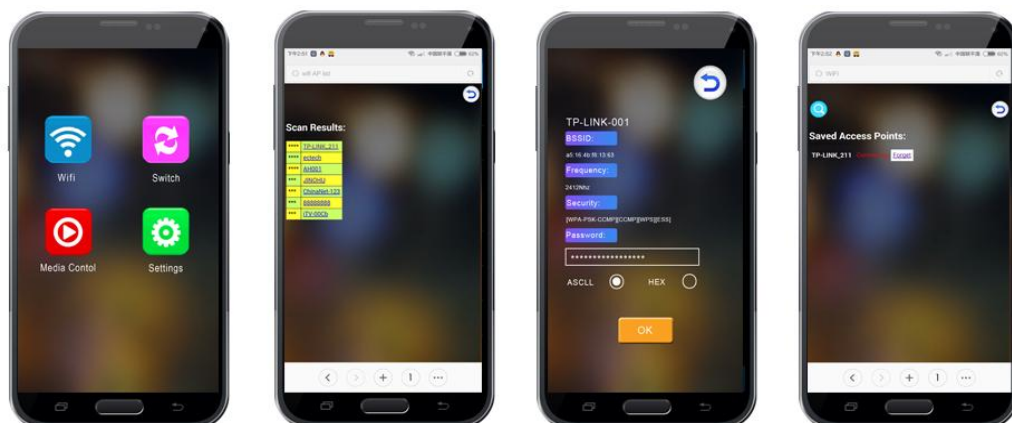
Short press the Wecast wireless display receiver mode button to switch to DLNA mode.then you can cast the local video by the dlna media player(such as bubbleUPNP) from the android device to TV or projector.



4.5 Open the Android device's WIFI and search and connect to the SSID Wecast - XXXXXX (the default password: 12345678)



4.6 Before internet surface online or stream the online video,pls use the smart phone to scan the QR code of the wecast menu or Run the mobile browser and input <http://192.168.49.1> to access to setting menu and then click wifi icon to make the wifi connection step by step as follows



4.7 After successful connection, You can serface online or stream the online video by browser or relative application.

4.8 Notice:

- 1) If you want to mirror the online content,Pls connect to wifi network before mirroring between the android device and wecast wireless display receiver.
- 2) The miracast name is different for differences brand phones or tablets display with:WIFI Display, WLAN Display, Wireless Display, Allshare Display, Allshare Cast, Wireless Display and etc.
- 3) Different Android devices' Miracast switch position are different, you can usually find it at WLAN Settings, WIFI Settings, more wireless Settings, display and others position.

5: Windows devices Quick Start Guide

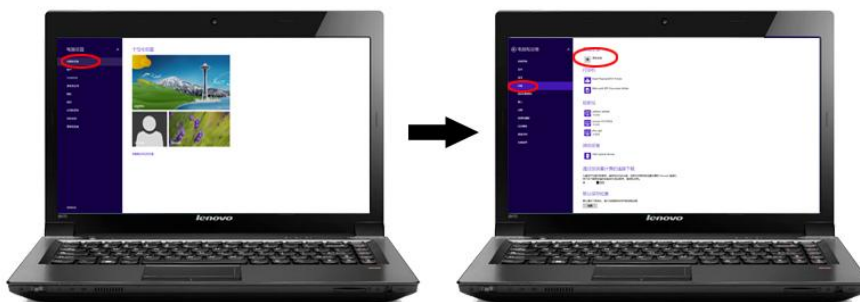
5.1 Pls check with your laptop vender or microsoft miracast official website to see if your laptop can support with the miracast or not.if supported,Short press the Wecast wireless display receiver mode button to switch to miracast mode.



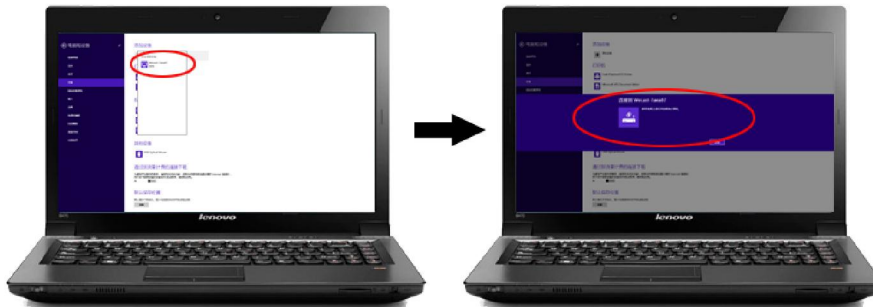
5.2 Run the Windows system (above 8.1) setting, click and enter into the "computer changed Setting".



5.3 Click and come to the "computer and device", click the "devices" to add the device.



5.4 The system will automatically search Wecast wireless display receiver ssid wecastxxxx,press it and then waiting for connection.



5.5 The miracast connection is successful,it can start to mirror the laptop screen to TV/projector screen.



FCC WARNING

This device complies with part 15 of the FCC Rules. Operation is subject to the following two conditions: (1) this device may not cause harmful interference, and (2) this device must accept any interference received, including interference that may cause undesired operation.

Any changes or modifications not expressly approved by the party responsible for compliance could void the user's authority to operate the equipment.

NOTE: This equipment has been tested and found to comply with the limits for a Class B digital device, pursuant to Part 15 of the FCC Rules. These limits are designed to provide reasonable protection against harmful interference in a residential installation. This equipment generates, uses and can radiate radio frequency energy and, if not installed and used in accordance with the instructions, may cause harmful interference to radio communications. However, there is no guarantee that interference will not occur in a particular installation.

If this equipment does cause harmful interference to radio or television reception, which can be determined by turning the equipment off and on, the user is encouraged to try to correct the interference by one or more of the following measures:

- Reorient or relocate the receiving antenna.
- Increase the separation between the equipment and receiver.
- Connect the equipment into an outlet on a circuit different from that to which the receiver is connected.
- Consult the dealer or an experienced radio/TV technician for help.

To maintain compliance with FCC's RF Exposure guidelines, This equipment should be installed and operated with minimum distance between 20cm the radiator your body: Use only the supplied antenna.