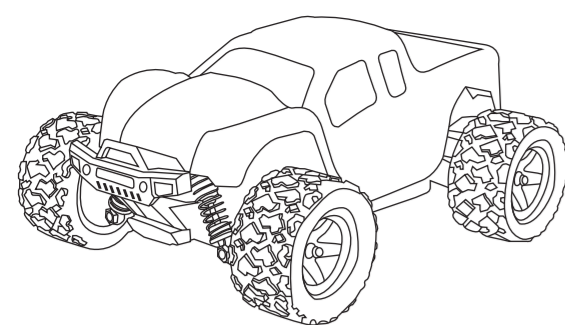


# Instruction Manual



1.Introduction of product parameters and remote control ----- 1  
 2.Introduction of remote control battery installation and remote control function. ----- 2  
 3.Introduction of RC car battery installation and charge. ----- 3  
 4.Precautions ----- 4

## ATTENTION

Electronic control product -Electronic product  
 The product is not suitable for children of 8 or below 8  
 \*Please pay attention to prevent from electrical shock in using any electronic product.  
 \*Please use under the supervision of the adult.  
 Warning: Please use the product correctly as the instruction manual.

## MAINTENANCE AND CARE

1. If the product is not going to be used for a long period, please take out the battery, so as to avoid liquid leakage or product damage.
2. Please wipe the car with wet cloth slightly.
3. Please do not place the toy in place with high temperature, humidity and direct sunshine.
4. Please do not place the toy in water, because it will probably damage the electronic component.
5. Once the product has been sold, we will not be responsible for any safety responsibility caused by operation, using or control.
6. In case of any operation, using or maintenance problem, we will authorize the franchisers to provide technical support and after-sales service, and please contact with the local franchisers.

EQ@LINE  
 Brand: EQ@LINE  
 Model: RC Car  
 Product: Remote control car  
 Part No: EQ@LINE

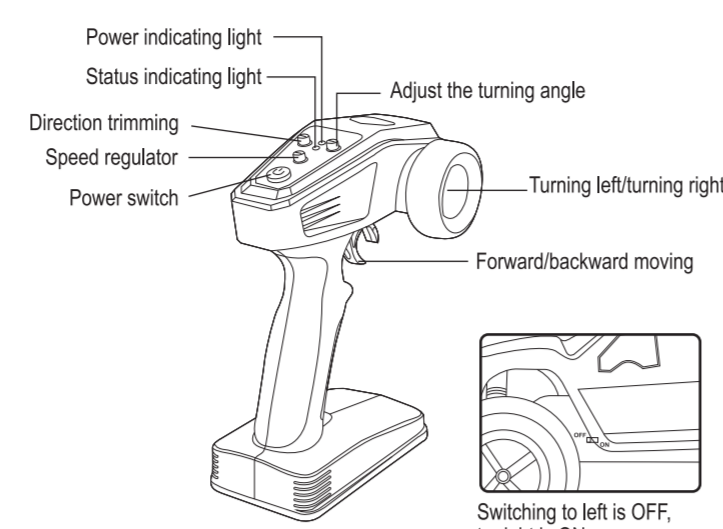
**EC REP**  
 EQ@LINE (EUROPE)  
 EQ@LINE (EUROPE)  
 EQ@LINE (EUROPE)

In order to operate this remote control car more easily, proficiently and safely, please read this instruction manual carefully before operation. The instruction manual contains important information, please properly keep it.

## PRODUCT PARAMETERS

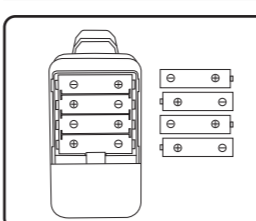
Product name: 1:18 four-wheel-drive high-speed vehicle Control distance: about 50m  
 Remote control battery: 4X(A)(additional purchase) Frequency: 2.4G  
 Vehicle battery: 7.4V, 1200mAh Highest speed: 38km/h  
 Charging time: about 3-4 hours Driving time: about 20min

## INTRODUCTION OF REMOTE CONTROL



1

## BATTERY INSTALLATION

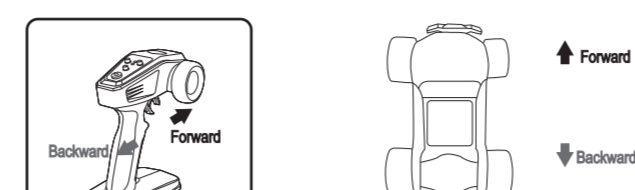


- Matters need attention for the battery**
- 1) The remote control uses 4 pcs 1.5V "AA" non-rechargeable batteries.
  - 2) Install the battery or remove the battery should correctly operate according to the polarity and voltage marks on the battery case. The battery should avoid Short circuit.
  - 3) The disposable battery can't be charged.
  - 4) The Battery of different models and conditions can't be used together.

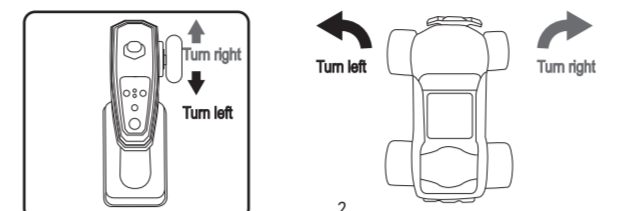
## CONTROLLER INTRODUCTION

Introduction of the joystick

- 1.Throttle joystick(The throttle joystick control the car forward or backward)



- 2.Direction joystick(The direction joystick control the car turn left or right)

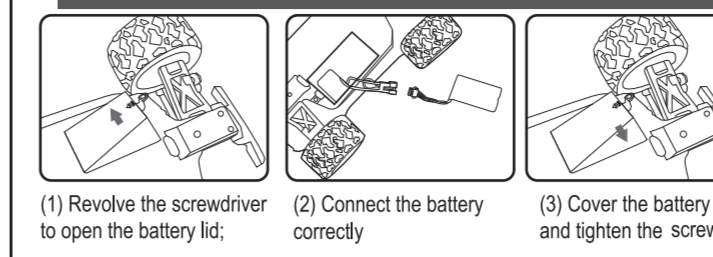


2

## MATTERS NEED ATTENTION IN DRIVING

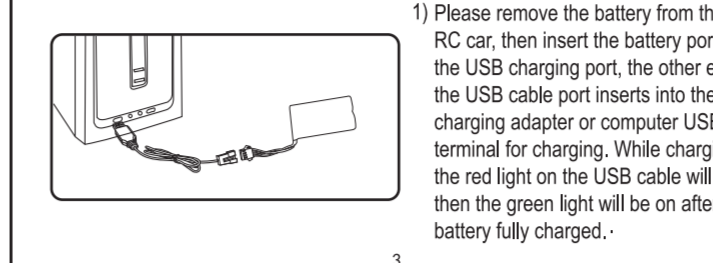
- When the car moves, please don't touch the four wheels of RC car, so as to avoid twist wound or incised wound.
- When the controller or RC car in low power, the remote control distance will be affected. In the meanwhile, there will be too low speed or climbing difficulty.
- The RC car can not fall from altitude or have serious collision, because it might damage the remote controller or shorten the service life of the RC car.
- Please do not play the RC car near the roadside, puddle, earth or other dangerous places, so as to avoid danger.

## BATTERY INSTALLATION OF RC CAR



- 1) Revolve the screwdriver to open the battery lid.
- 2) Connect the battery correctly.
- 3) Cover the battery lid and tighten the screws.

## CHARGE THE BATTERY OF RC CAR



- 1) Please remove the battery from the RC car, then insert the battery port into the USB charging port, the other end of the USB cable port inserts into the charging adapter or computer USB terminal for charging. While charging, the red light on the USB cable will be on, then the green light will be on after the battery fully charged.

3

## MATTERS NEED ATTENTION IN BATTERY USING

1. The product is not suitable for being used by children aged under 8 years old.
2. The product has the power of high-speed reviving, and it is a little dangerous in operating. Please don't approach or touch the product when the product is operating.
3. When using the product, please keep away from the railway, highway, and other dangerous environments.
4. In using the product, please keep away from the cellphone station, big-power emitting equipment and other environment with high electromagnetic interference.
5. Please stay away from bicycles, cars, etc. while using this product.
6. Please do not use the product in raining, thunderstorm, sandstorm, fog, snow, strong wind, low temperature or other similar weather.
7. The product isn't in the waterproof design. Please do not operate the product near water ponds.
8. Please use this product with right.
9. Please don't use the product near the children's playground.
10. Please do not use the product chase after any transportation tool or affect the normal operation of the transportation tool.
11. The product can not be used after drinking, tiredness, taking medicine or having poor physical condition.
12. Please inspect the product before each operation, including but not limited to the firmness of the component, crack or wearing of the body and tire, battery power amount, effectiveness of the indicating light and so on. In case of any abnormality, please immediately stop using and replace the corresponding components.
13. The remote control vehicle with abnormal working status will probably have accident. Please do not operate by force.
14. Please do not hinder any moving part.
15. Please not refit the product, or use the product for any not originally designed application.
16. Please operate as the instruction manual.
17. Please use the component of the original part for maintenance and replacement.
18. It is not allowed to mix the batteries of different model type in using.
19. Please do not use the expanded, leaked or damaged battery.
20. In charging the battery, please do not near any flammable product(push as blanket, wooden furniture and wooden plate and so on).
21. Please use the charging cable configured by the original plant. The charging cable of other brand or the damaged charging cable can't be used.
22. The model should not be placed near your ear, because improper operation will damage your hearing.
23. Please do not operate the battery or enable to have short circuit, so as to avoid explosion.
24. The motor is the heating part, please do not touch it, so as to avoid scalding.

4

#### FCC Warning

This device complies with part 15 of the FCC rules. Operation is subject to the following two conditions: (1) this device may not cause harmful interference, and (2) this device must accept any interference received, including interference that may cause undesired operation.

Changes or modifications not expressly approved by the party responsible for compliance could void the user's authority to operate the equipment.

NOTE: This equipment has been tested and found to comply with the limits for a Class B digital device, pursuant to part 15 of the FCC Rules. These limits are designed to provide reasonable protection against harmful interference in a residential installation. This equipment generates uses and can radiate radio frequency energy and, if not installed and used in accordance with the instructions, may cause harmful interference to radio communications. However, there is no guarantee that interference will not occur in a particular installation. If this equipment does cause harmful interference to radio or television reception, which can be determined by turning the equipment off and on, the user is encouraged to try to correct the interference by one or more of the following measures:

- Reorient or relocate the receiving antenna.
- Increase the separation between the equipment and receiver.
- Connect the equipment into an outlet on a circuit different from that to which the receiver is connected.
- Consult the dealer or an experienced radio/TV technician for help.

#### Radiation Exposure Statement

The device has been evaluated to meet general RF exposure requirement. The device can be used in portable exposure condition without restriction.