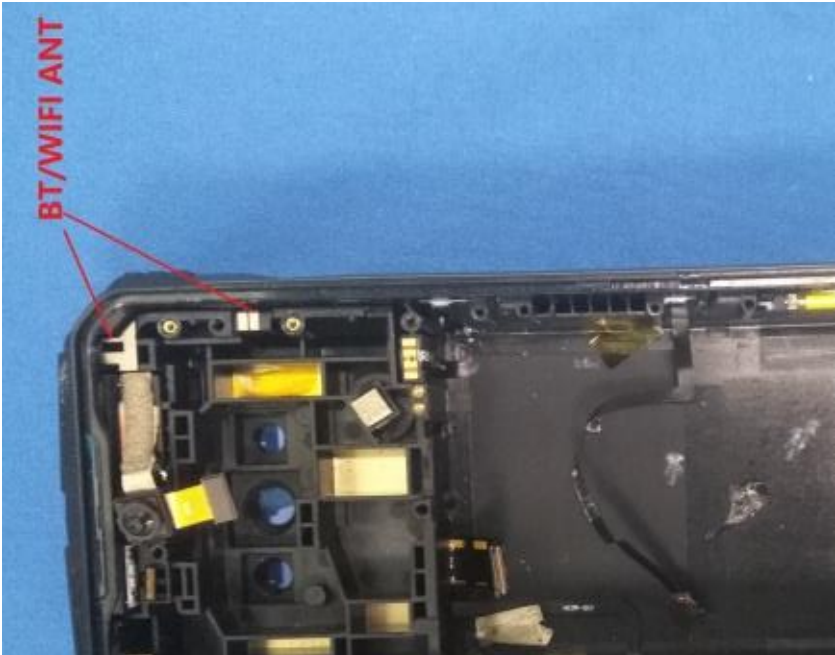
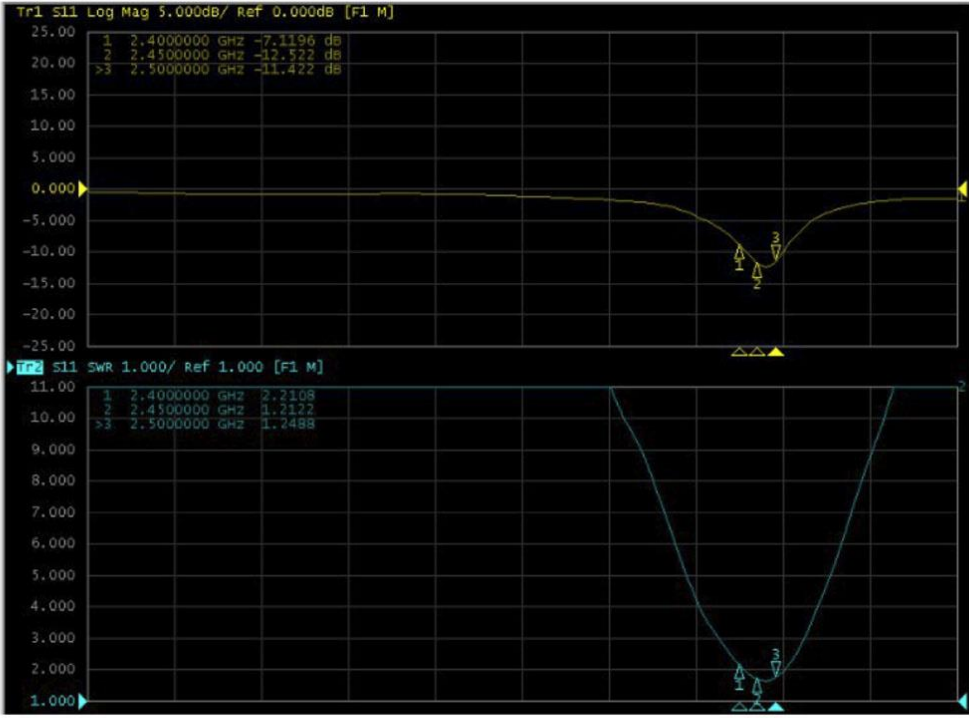


Antenna Photo



Measurement Data



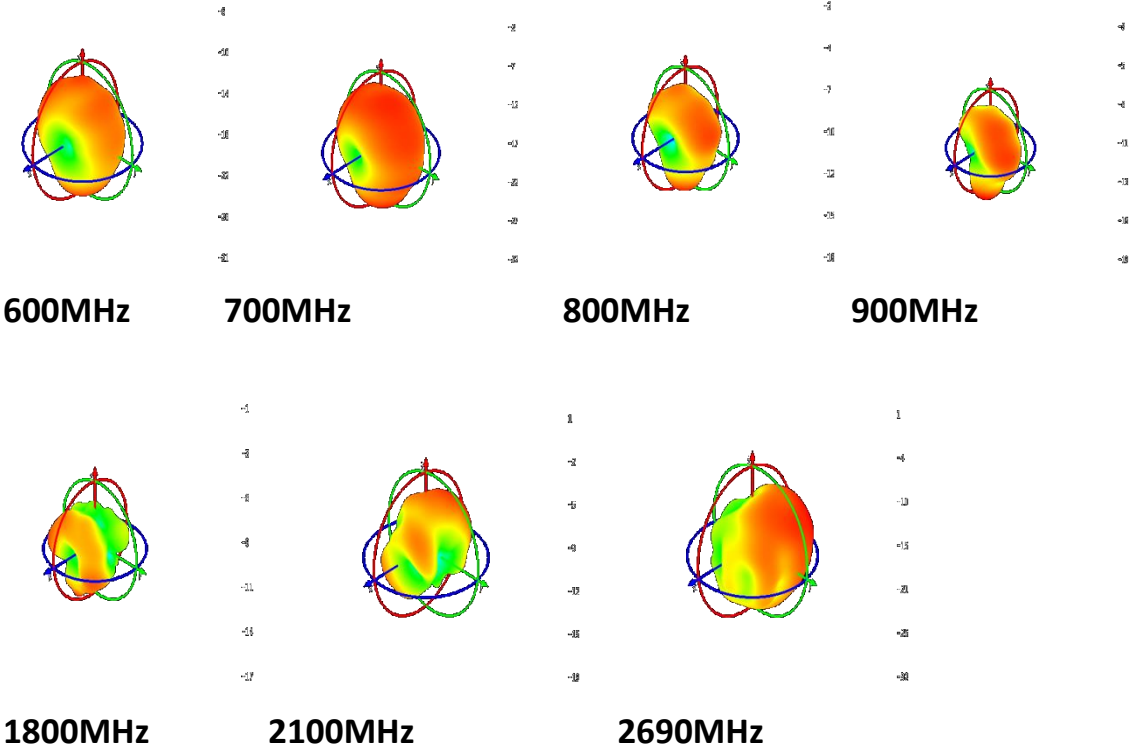
Frequency (MHz)	2400	2450	2500
Return Loss	-7.11	-12.52	-11.42
VSWR	2.21	1.21	1.25

BT& WiFi Antenna Gain

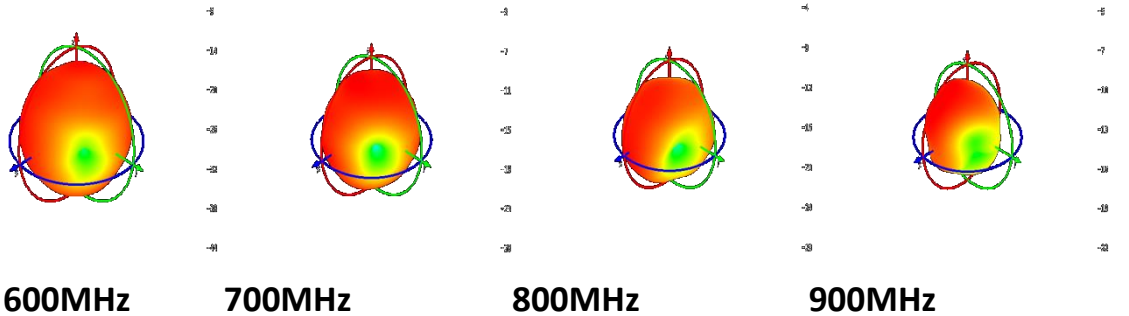
Frequency(MHz)	BT	WiFi 2.4G	WiFi 5G
Peak Gain(dBi)	0.36	0.39	0.43

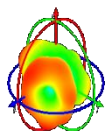
3-D Patten Plots

ANT0:



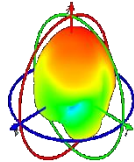
ANT1:





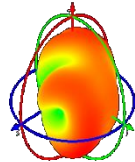
1
-1
-2
-3
-4
-5
-6
-7
-8
-9

1800MHz



1
-1
-2
-3
-4
-5
-6
-7
-8
-9

2100MHz

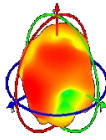


1
-1
-2
-3
-4
-5
-6
-7
-8
-9

2690MHz

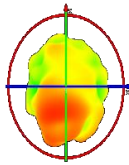
1
-1
-2
-3
-4
-5
-6
-7
-8
-9

ANT6:



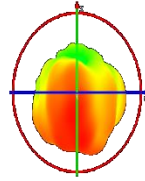
1
-1
-2
-3
-4
-5
-6
-7
-8
-9

1575MHz



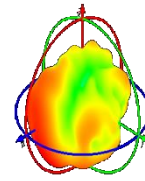
1
-1
-2
-3
-4
-5
-6
-7
-8
-9

2450MHz



1
-1
-2
-3
-4
-5
-6
-7
-8
-9

5150MHz

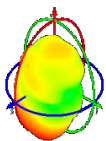


1
-1
-2
-3
-4
-5
-6
-7
-8
-9

5850MHz

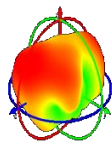
1
-1
-2
-3
-4
-5
-6
-7
-8
-9

ANT7:



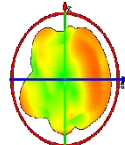
1
-1
-2
-3
-4
-5
-6
-7
-8
-9

1176MHz



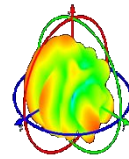
1
-1
-2
-3
-4
-5
-6
-7
-8
-9

2450MHz



1
-1
-2
-3
-4
-5
-6
-7
-8
-9

5150MHz



1
-1
-2
-3
-4
-5
-6
-7
-8
-9

5850MHz

1
-1
-2
-3
-4
-5
-6
-7
-8
-9