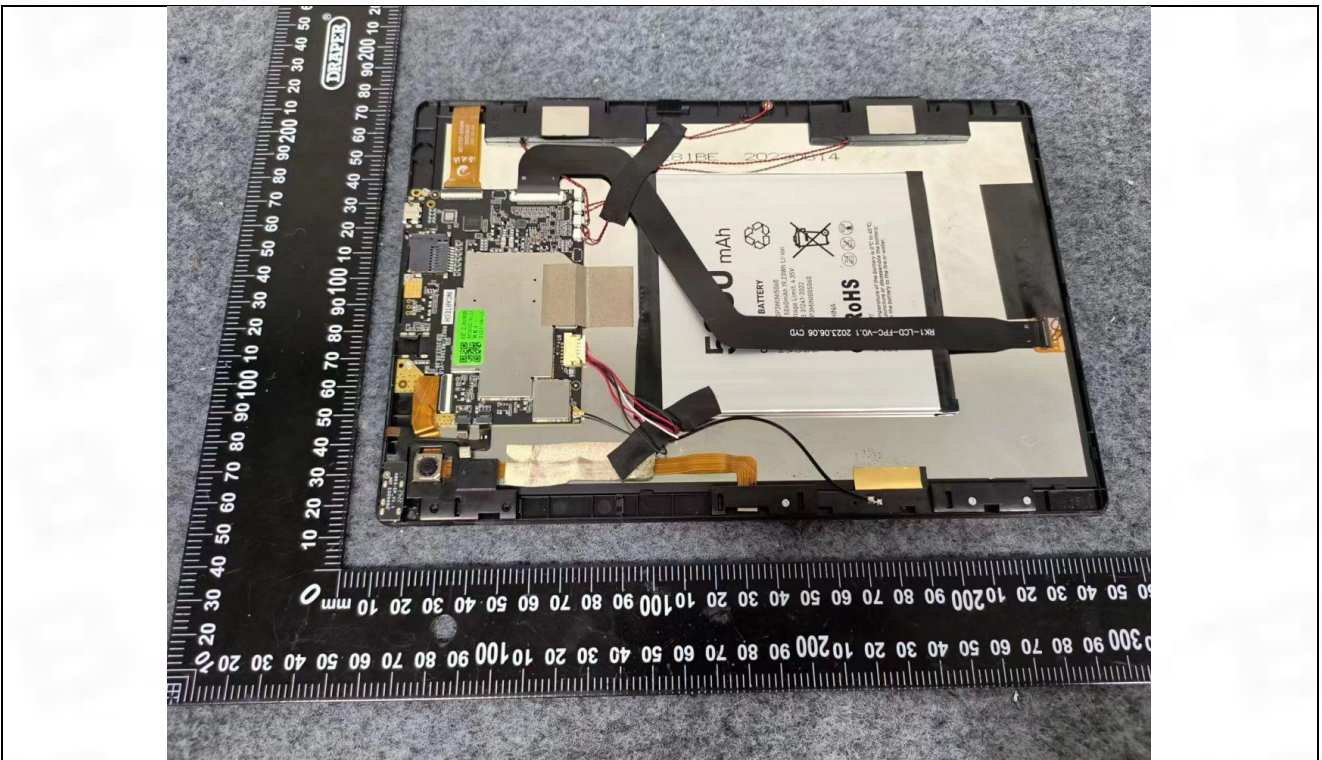
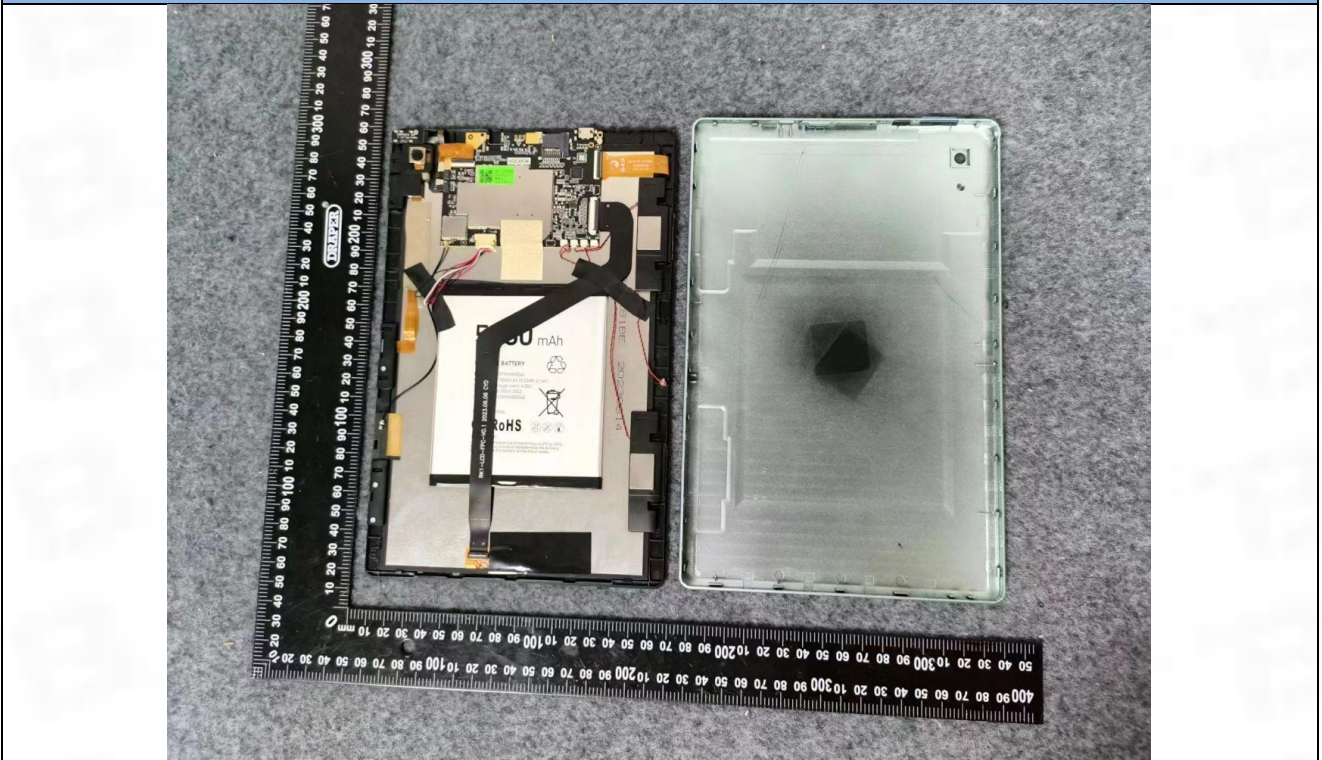
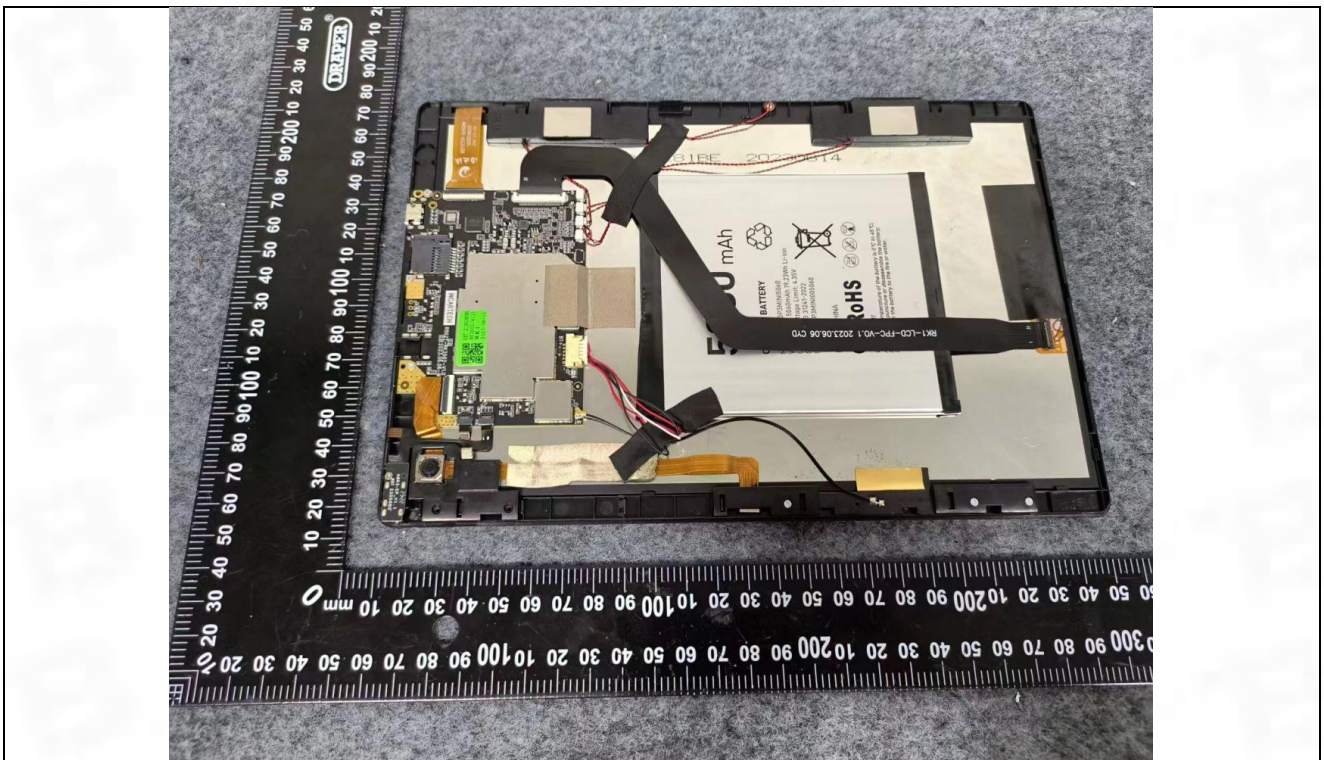
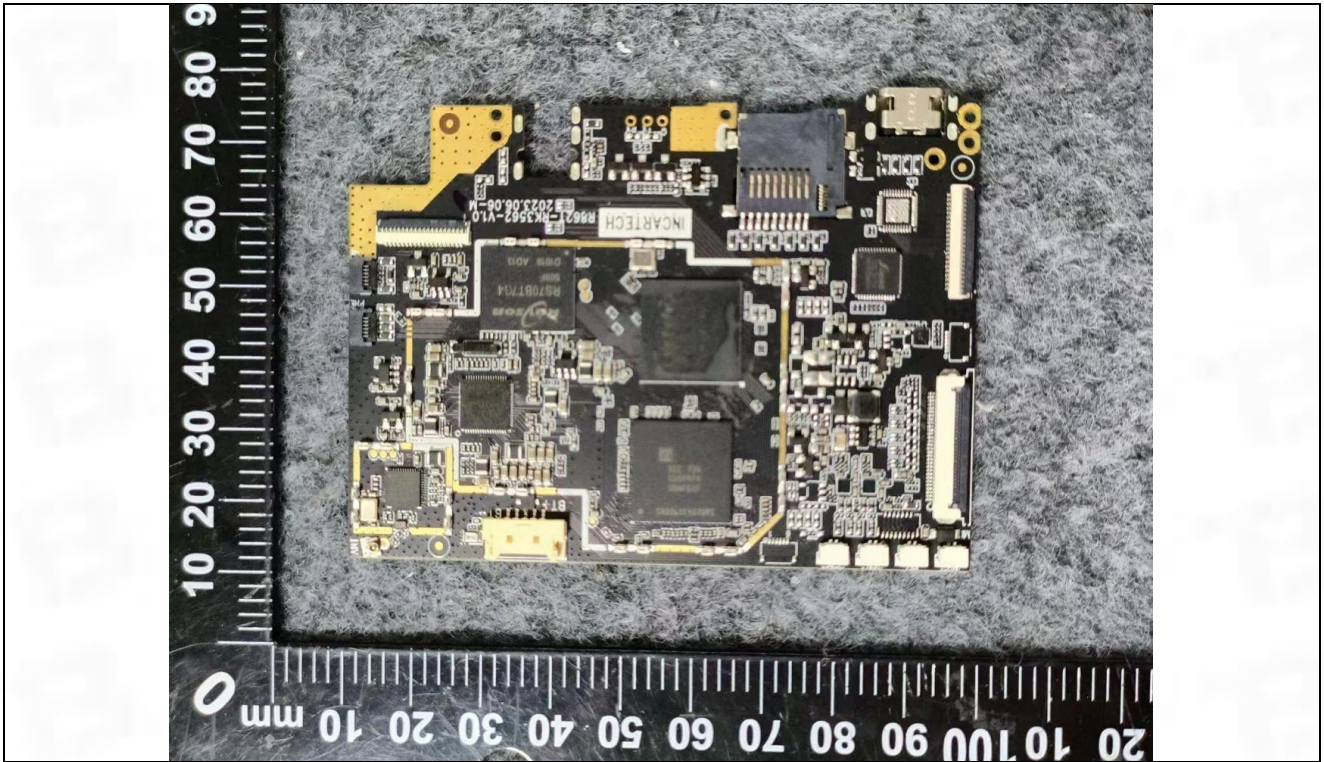
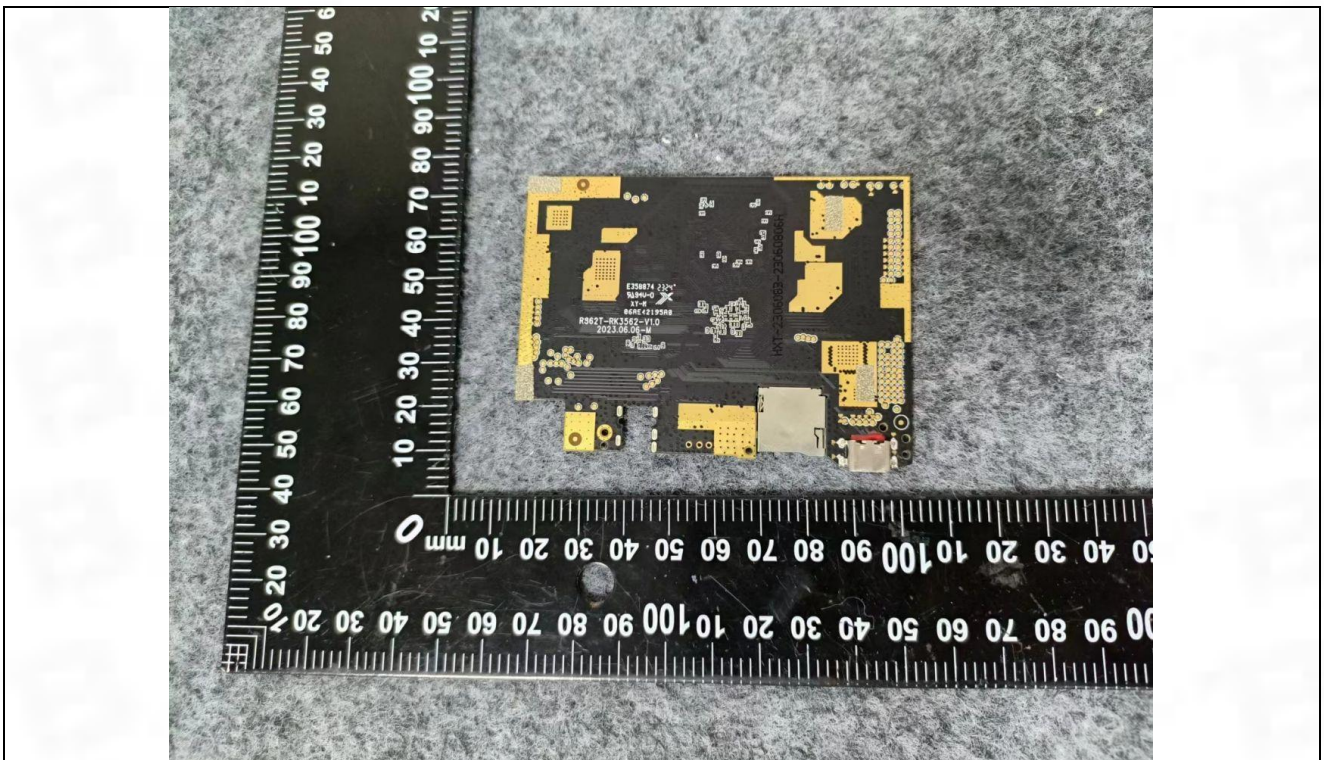
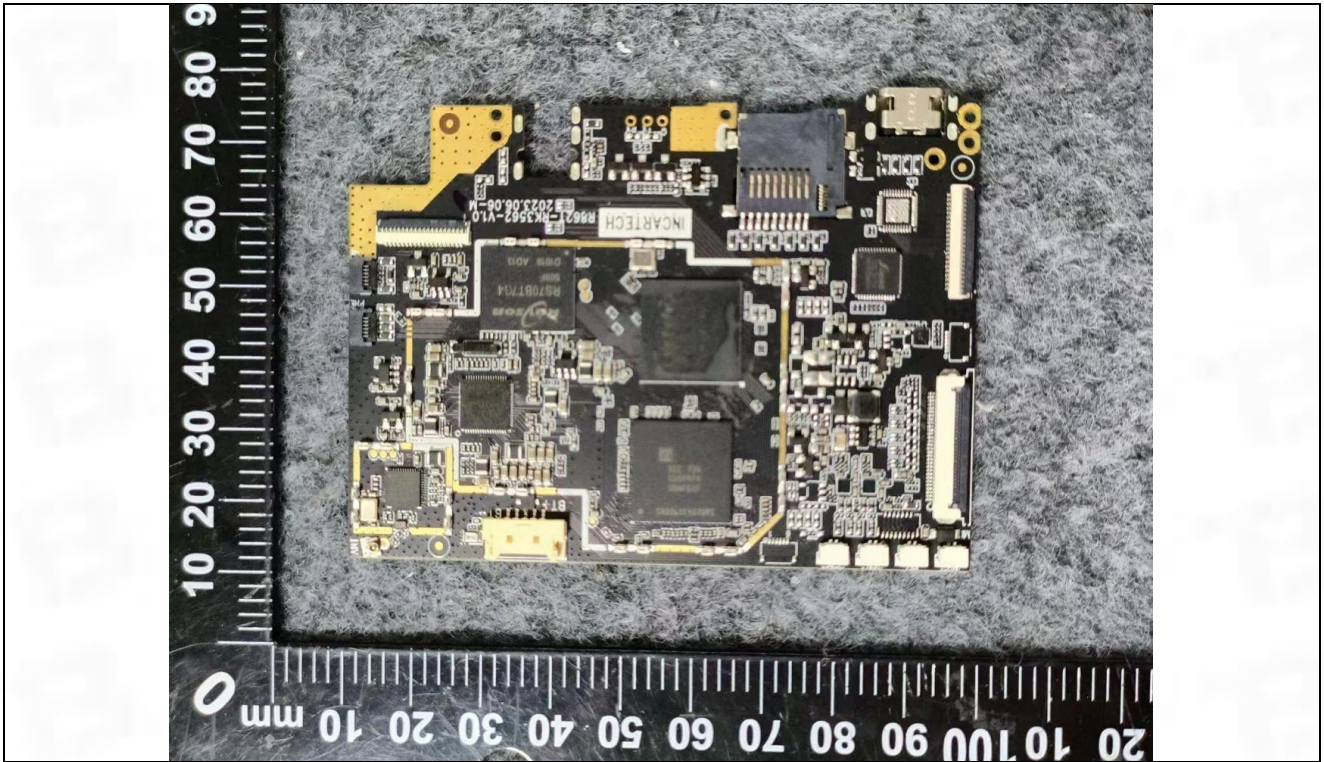


Internal









Appendix

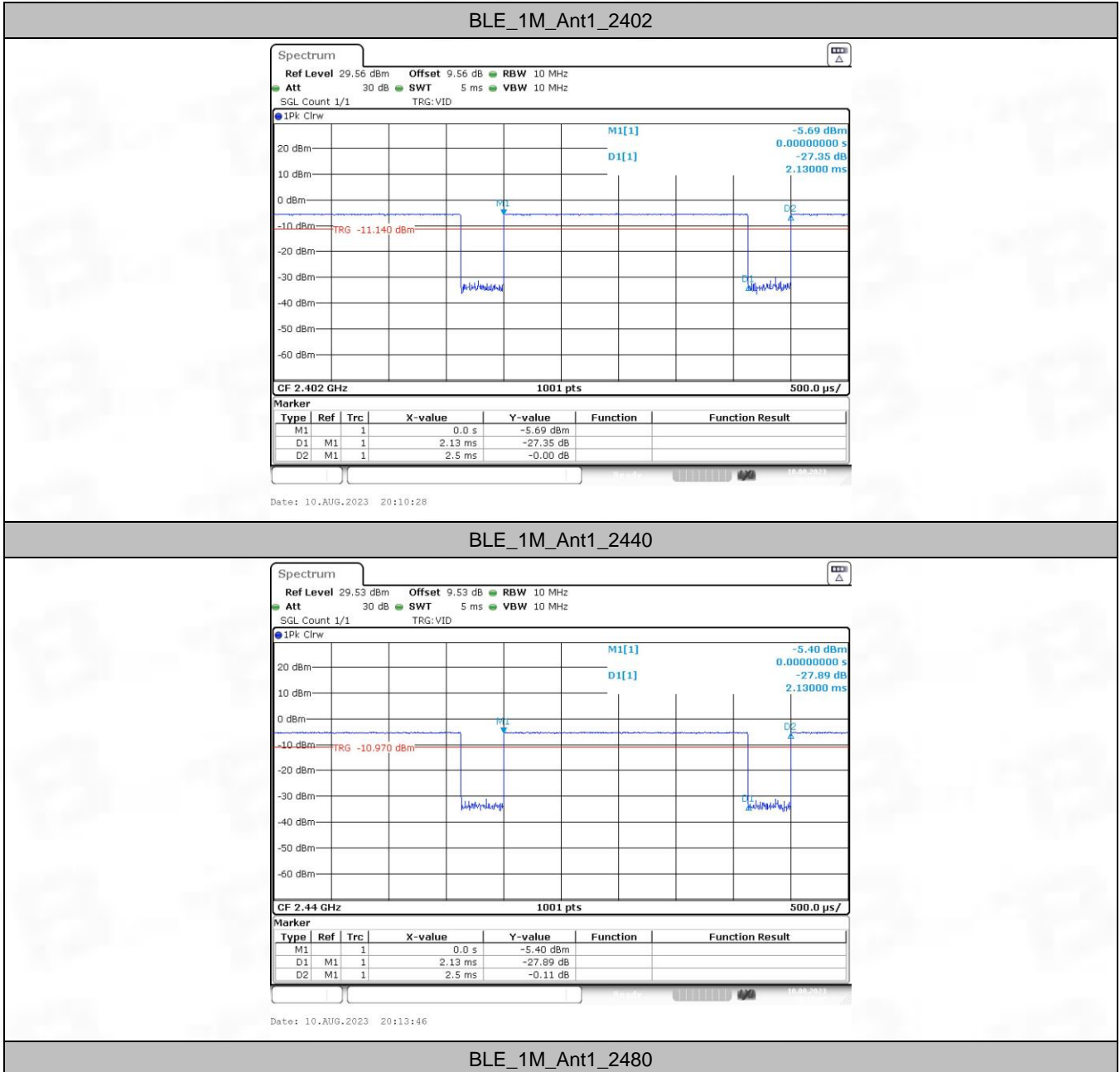
1. Duty Cycle

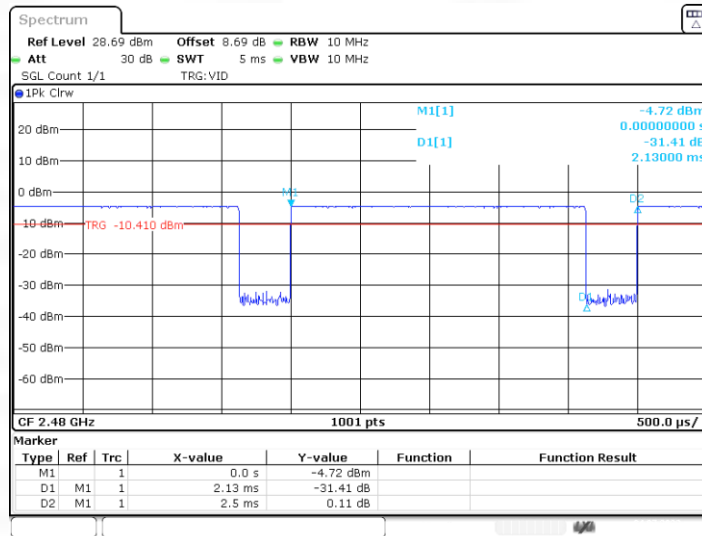
1.1 Ant1

1.1.1 Test Result

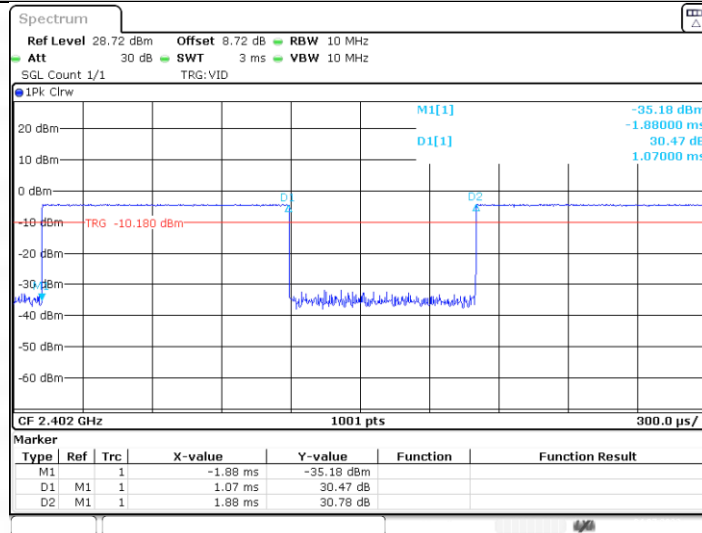
TestMode	Antenna	Freq(MHz)	ON Time [ms]	Period [ms]	X	DC [%]	xFactor	Limit	Verdict
BLE_1M	Ant1	2402	2.13	2.50	0.8520	85.20	0.70	---	---
		2440	2.13	2.50	0.8520	85.20	0.70	---	---
		2480	2.13	2.50	0.8520	85.20	0.70	---	---
BLE_2M	Ant1	2402	1.07	1.88	0.5691	56.91	2.45	---	---
		2440	1.07	1.88	0.5691	56.91	2.45	---	---
		2480	1.07	1.88	0.5691	56.91	2.45	---	---

1.1.2 Test Graph

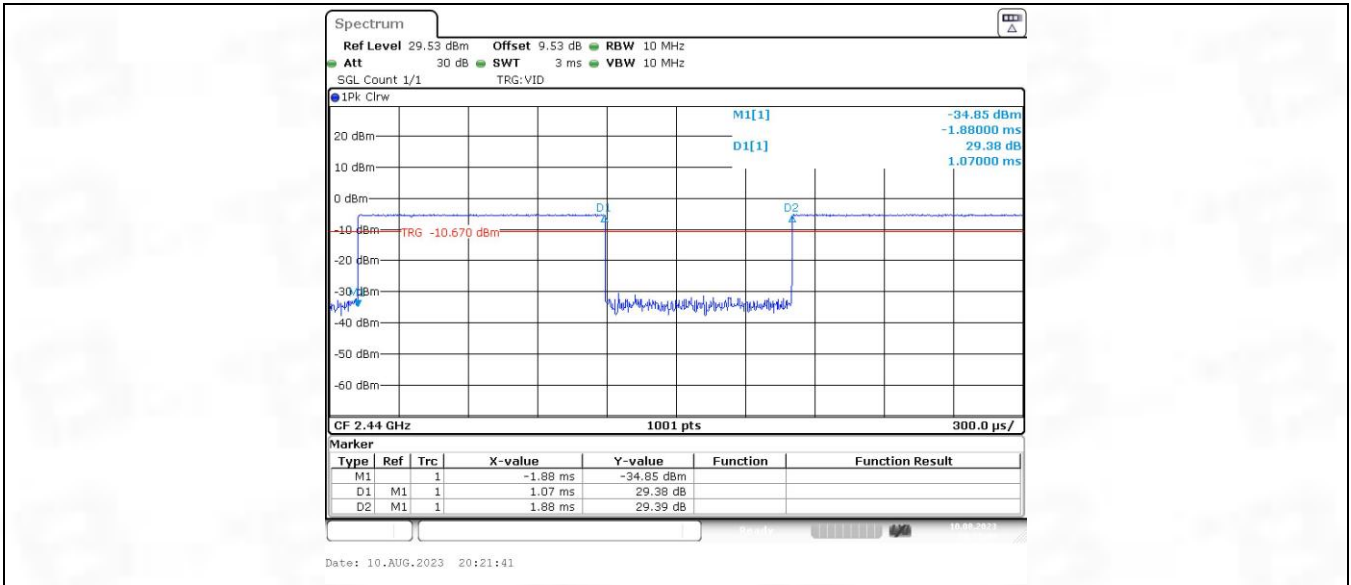




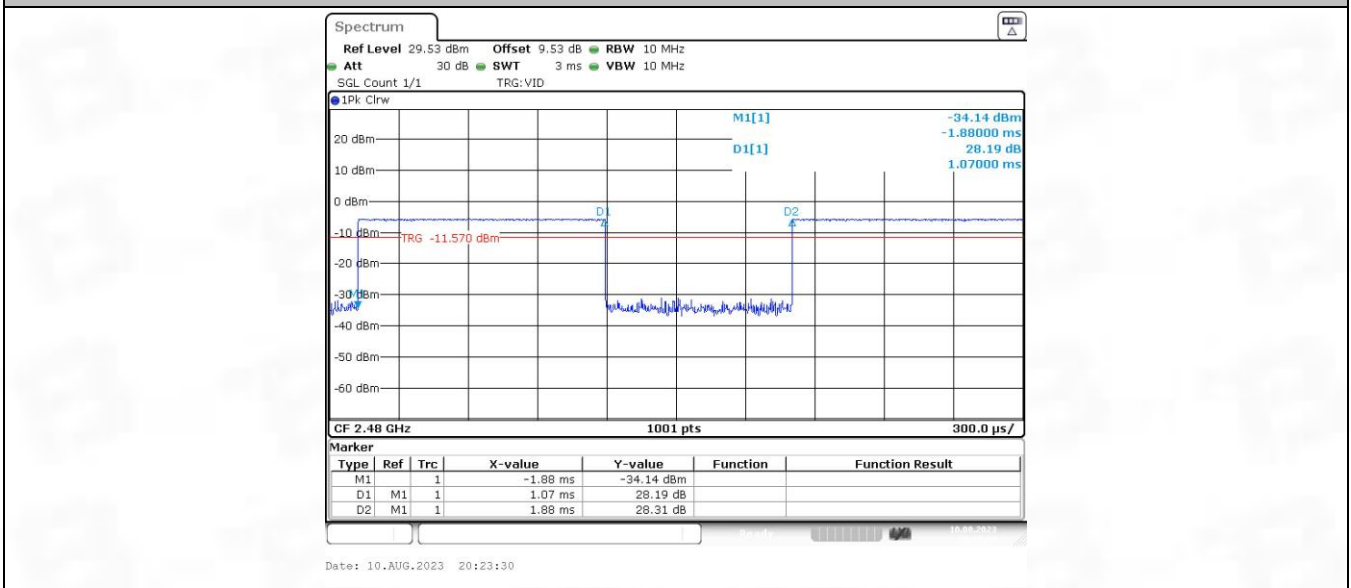
BLE_2M_Ant1_2402



BLE_2M_Ant1_2440



BLE_2M_Ant1_2480



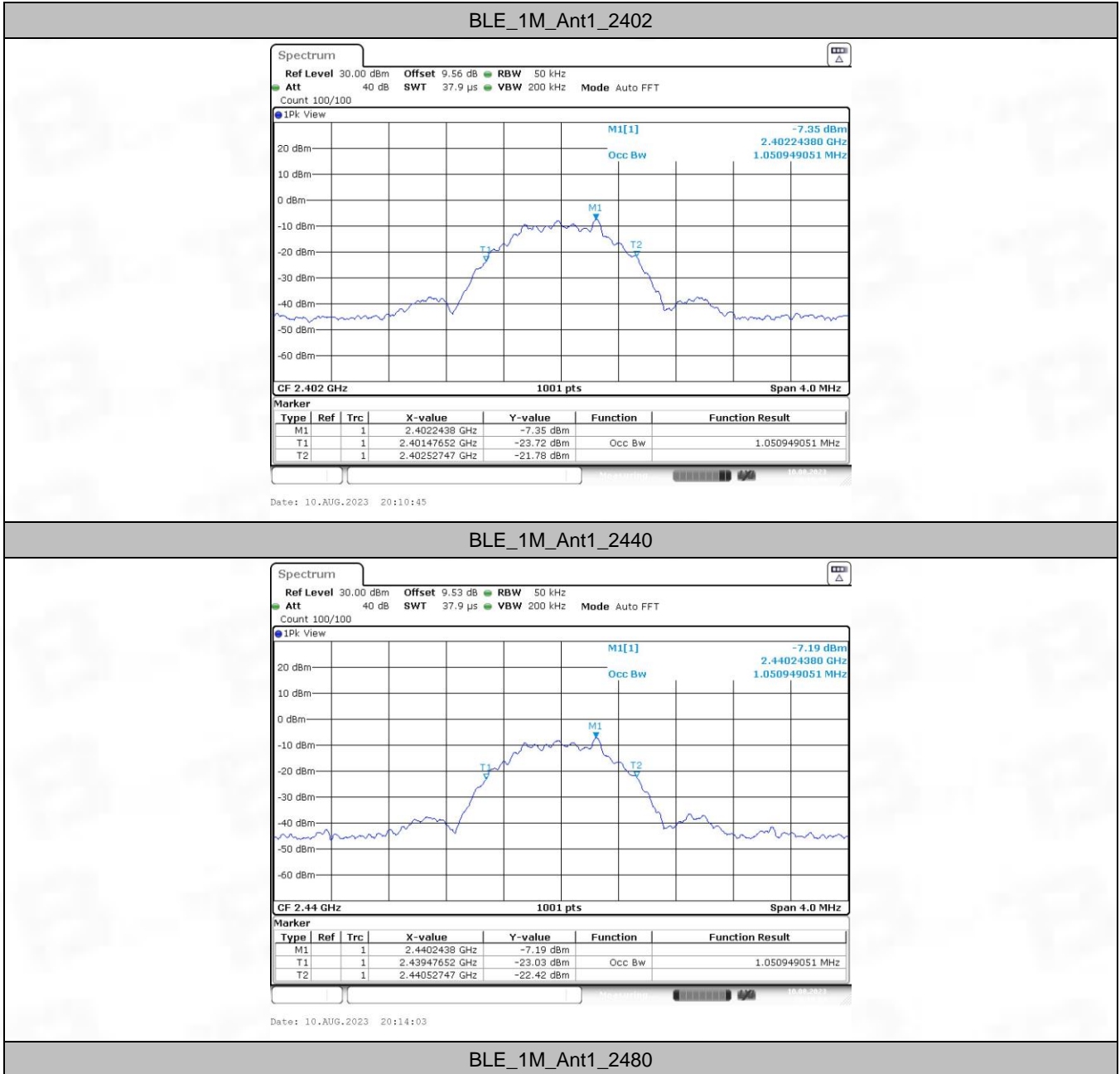
2. Bandwidth

2.1 OBW

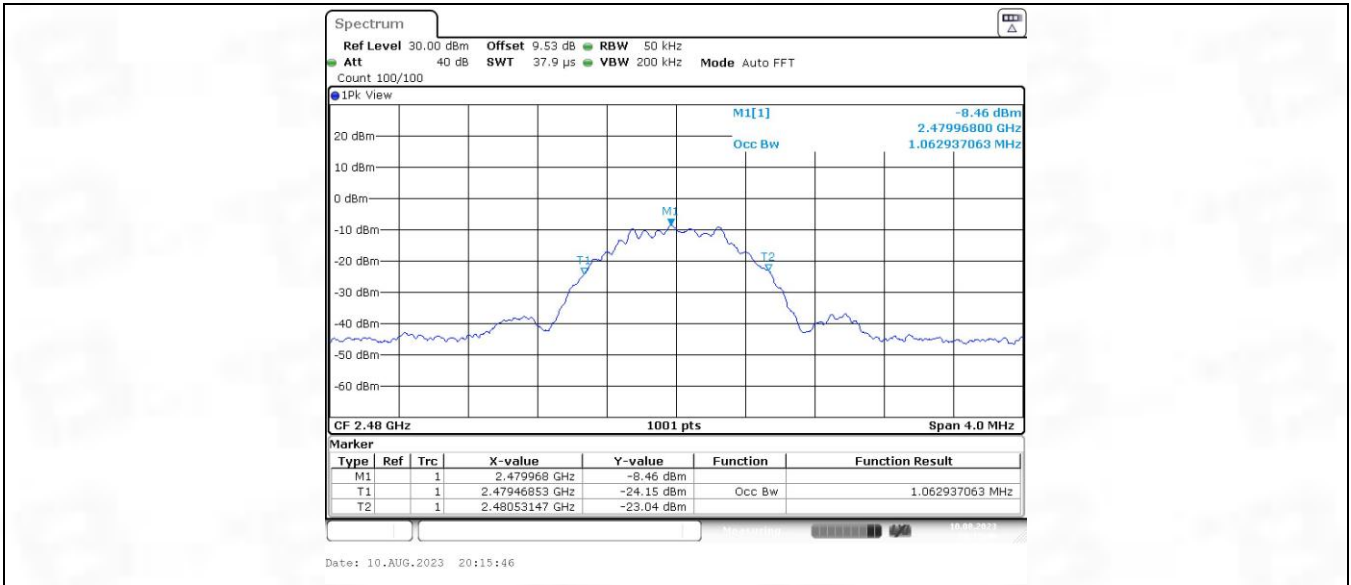
2.1.1 Test Result

TestMode	Antenna	Freq(MHz)	OCB [MHz]	FL[MHz]	FH[MHz]	Limit[MHz]	Verdict
BLE_1M	Ant1	2402	1.051	2401.4765	2402.5275	---	---
		2440	1.051	2439.4765	2440.5275	---	---
		2480	1.063	2479.4685	2480.5315	---	---
BLE_2M	Ant1	2402	2.094	2400.9690	2403.0629	---	---
		2440	2.082	2438.9690	2441.0509	---	---
		2480	2.086	2478.9690	2481.0549	---	---

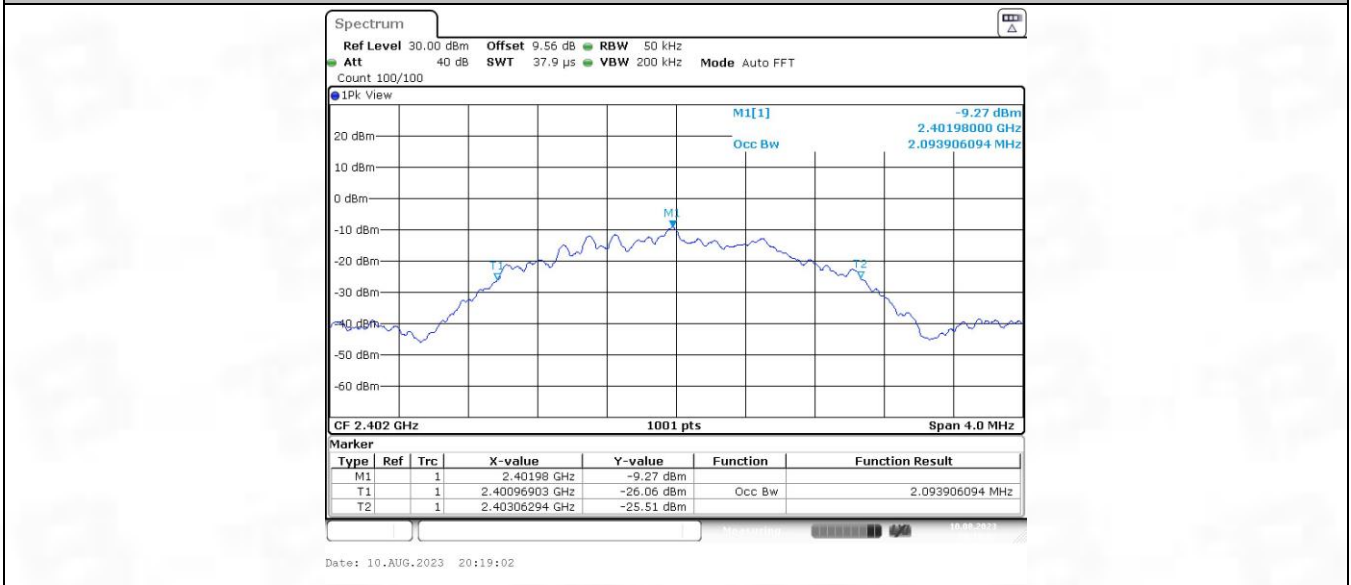
2.1.2 Test Graph



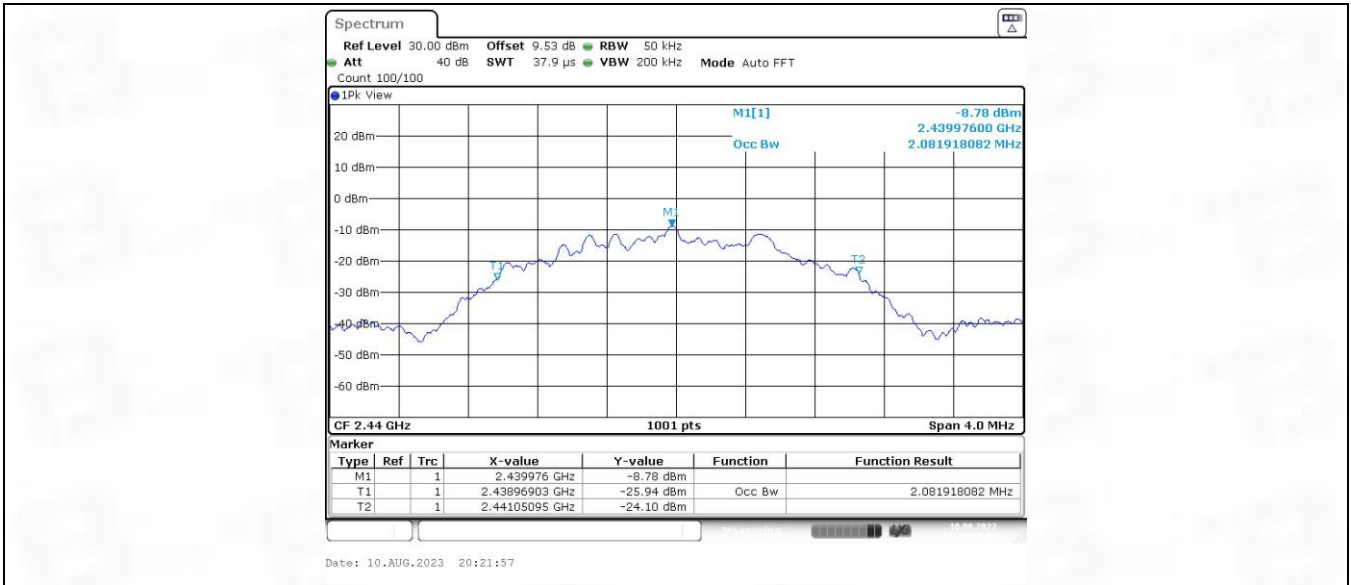
BLE_1M_Ant1_2480



BLE_2M_Ant1_2402



BLE_2M_Ant1_2440



BLE_2M_Ant1_2480

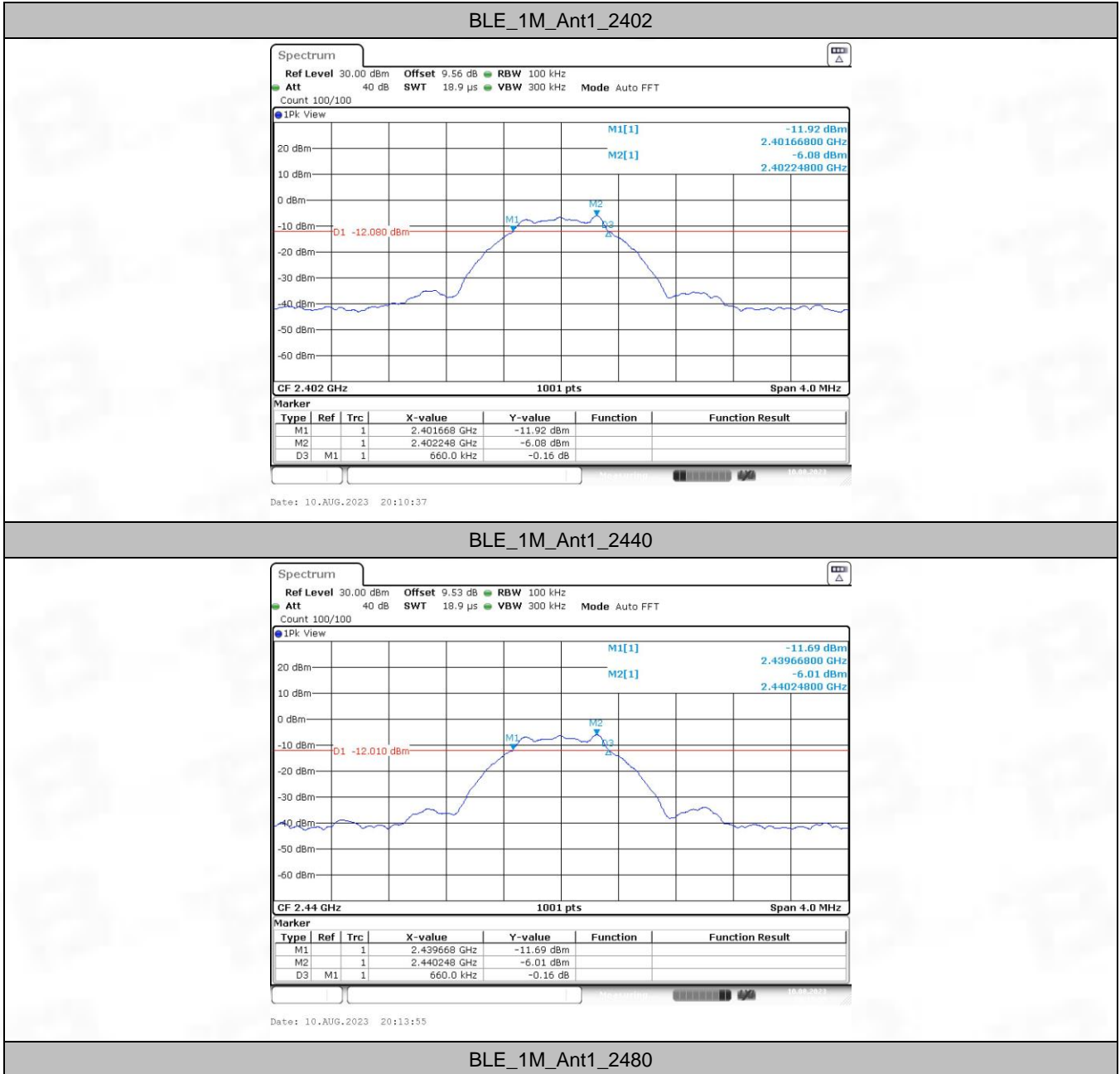


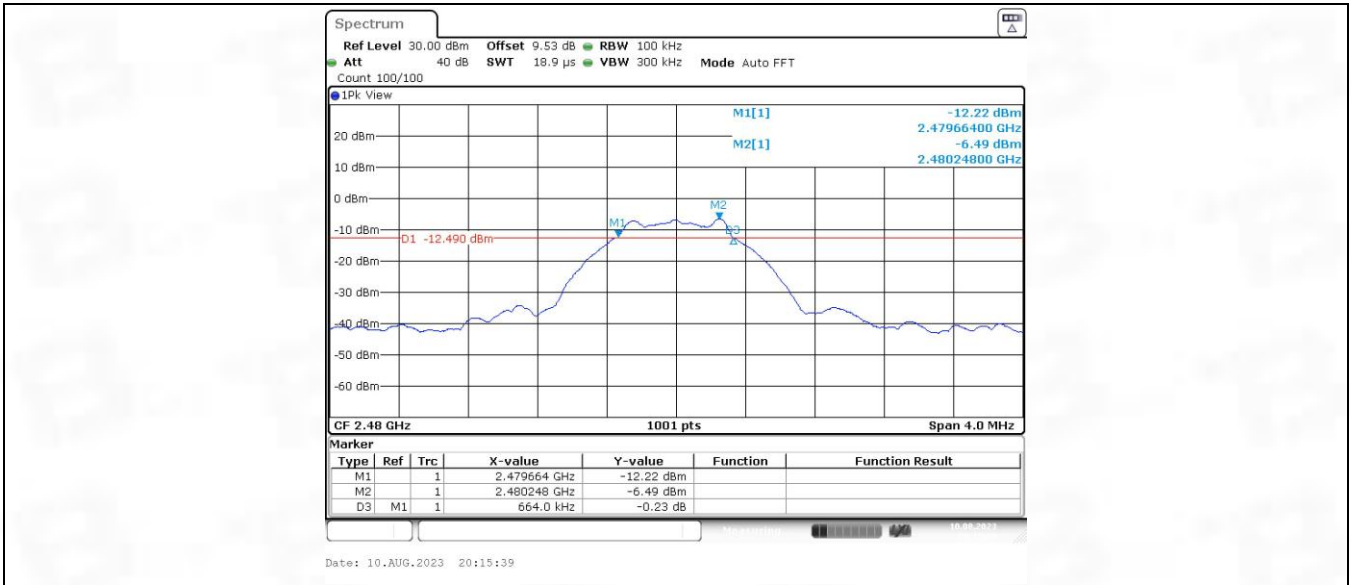
2.2 6dB BW

2.2.1 Test Result

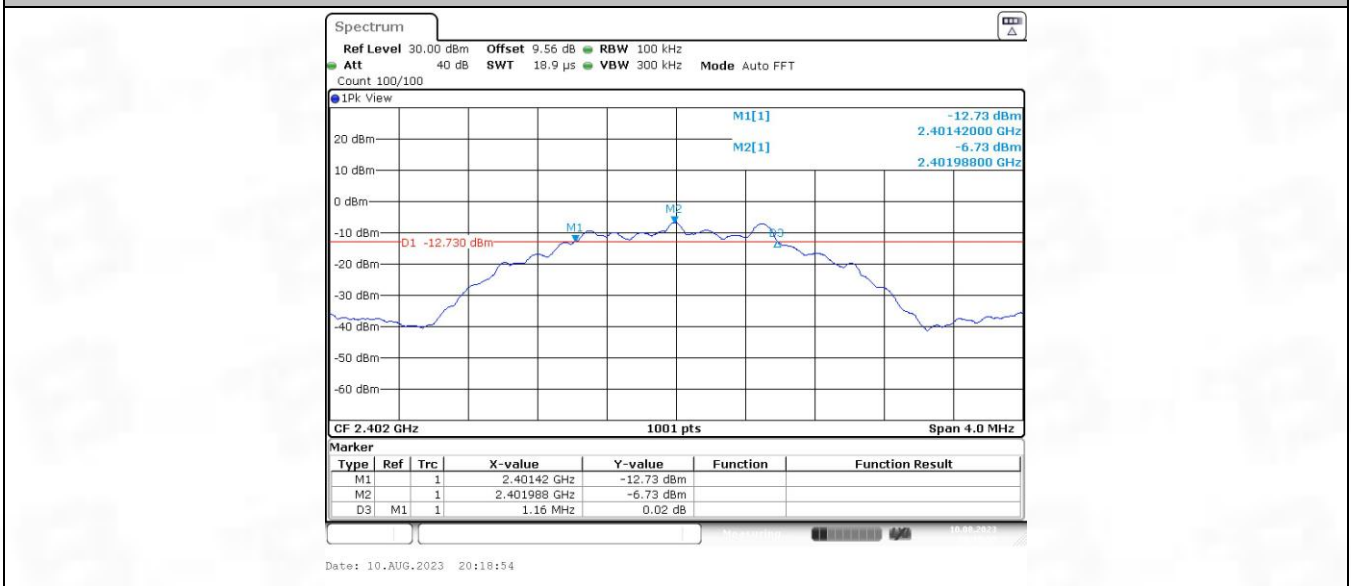
TestMode	Antenna	Freq(MHz)	DTS BW [MHz]	FL[MHz]	FH[MHz]	Limit[MHz]	Verdict
BLE_1M	Ant1	2402	0.66	2401.67	2402.33	0.5	PASS
		2440	0.66	2439.67	2440.33	0.5	PASS
		2480	0.66	2479.66	2480.33	0.5	PASS
BLE_2M	Ant1	2402	1.16	2401.42	2402.58	0.5	PASS
		2440	1.15	2439.43	2440.58	0.5	PASS
		2480	1.16	2479.42	2480.58	0.5	PASS

2.2.2 Test Graph

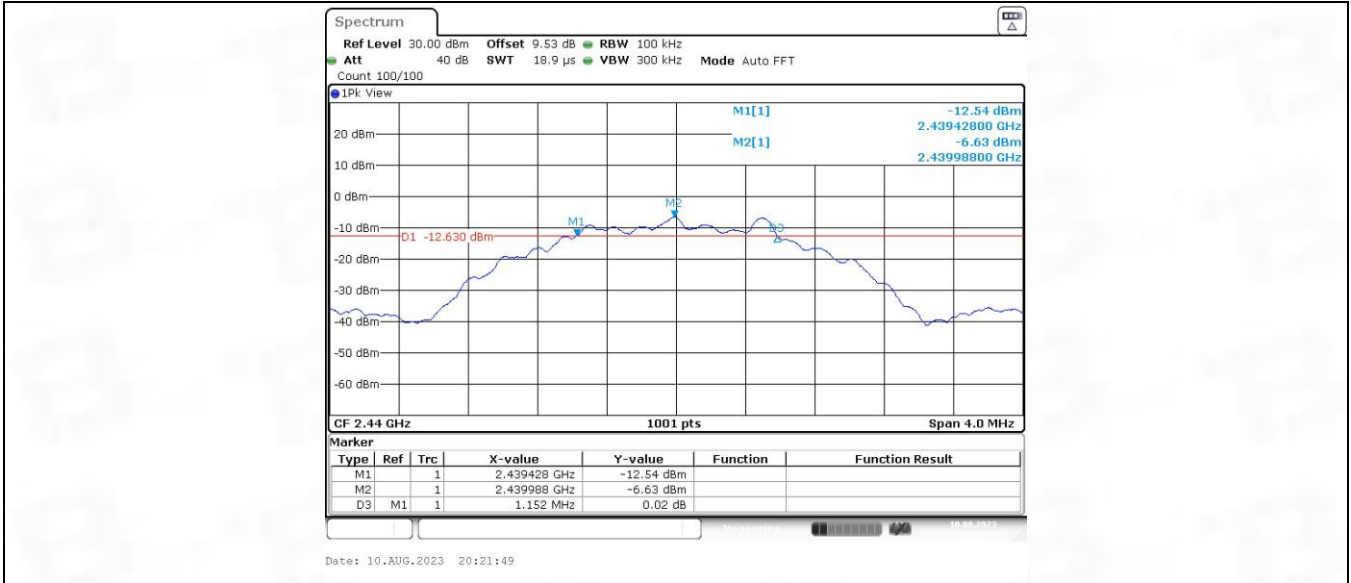




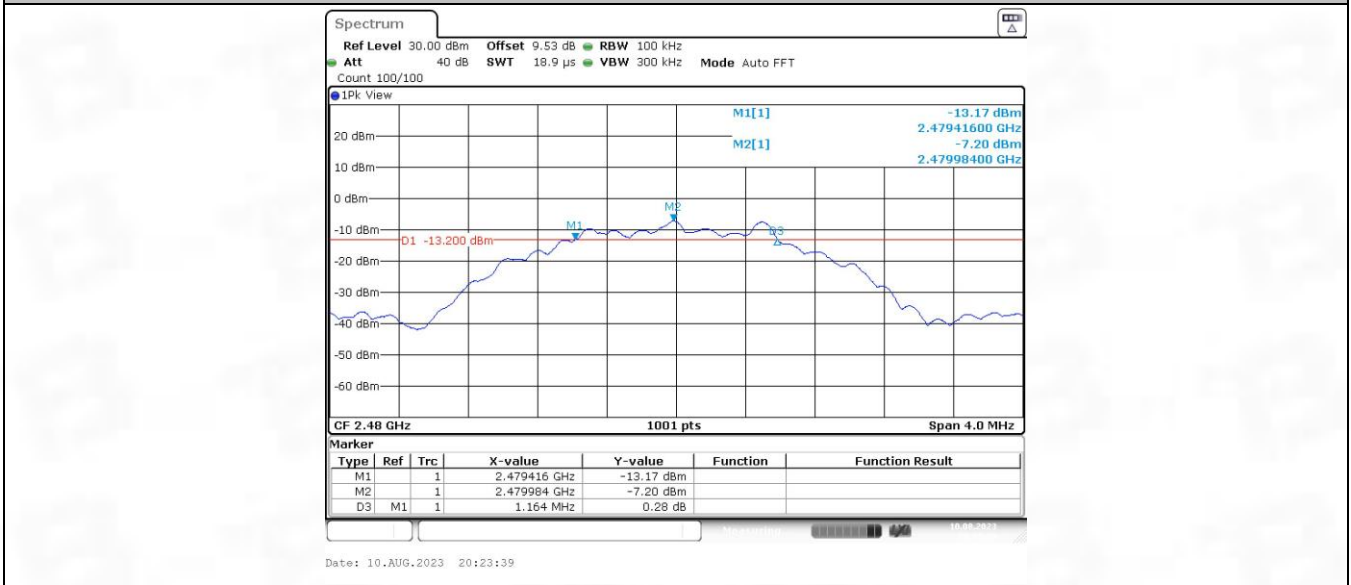
BLE_2M_Ant1_2402



BLE_2M_Ant1_2440



BLE_2M_Ant1_2480



3. Maximum Conducted Output Power

3.1 Power

3.1.1 Test Result

TestMode	Antenna	Freq(MHz)	Conducted Peak Power[dBm]	Conducted Limit[dBm]	Verdict
BLE_1M	Ant1	2402	1.35	≤30	PASS
		2440	1.41	≤30	PASS
		2480	1.26	≤30	PASS
BLE_2M	Ant1	2402	1.33	≤30	PASS
		2440	1.24	≤30	PASS
		2480	1.36	≤30	PASS

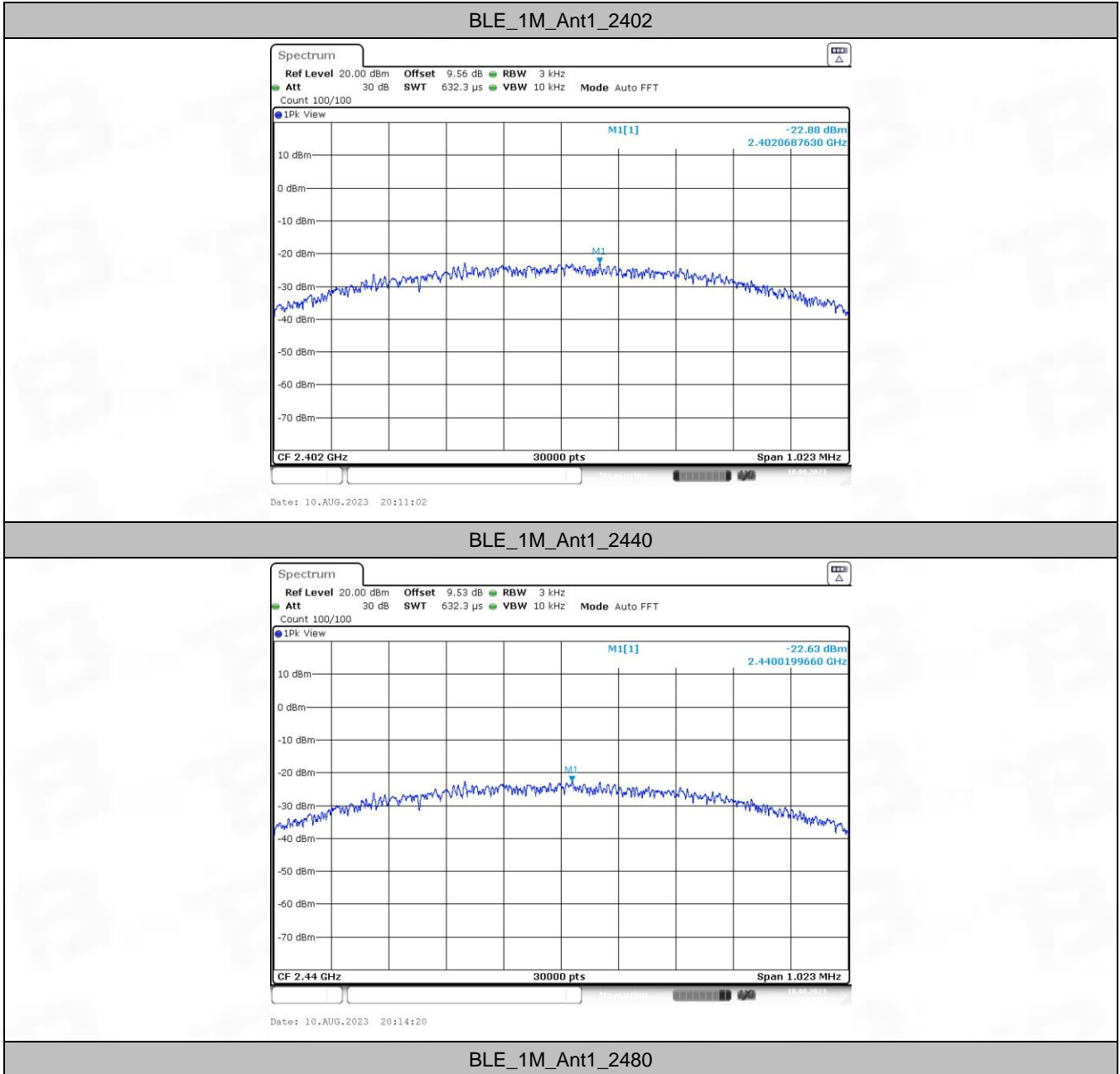
4. Maximum Power Spectral Density

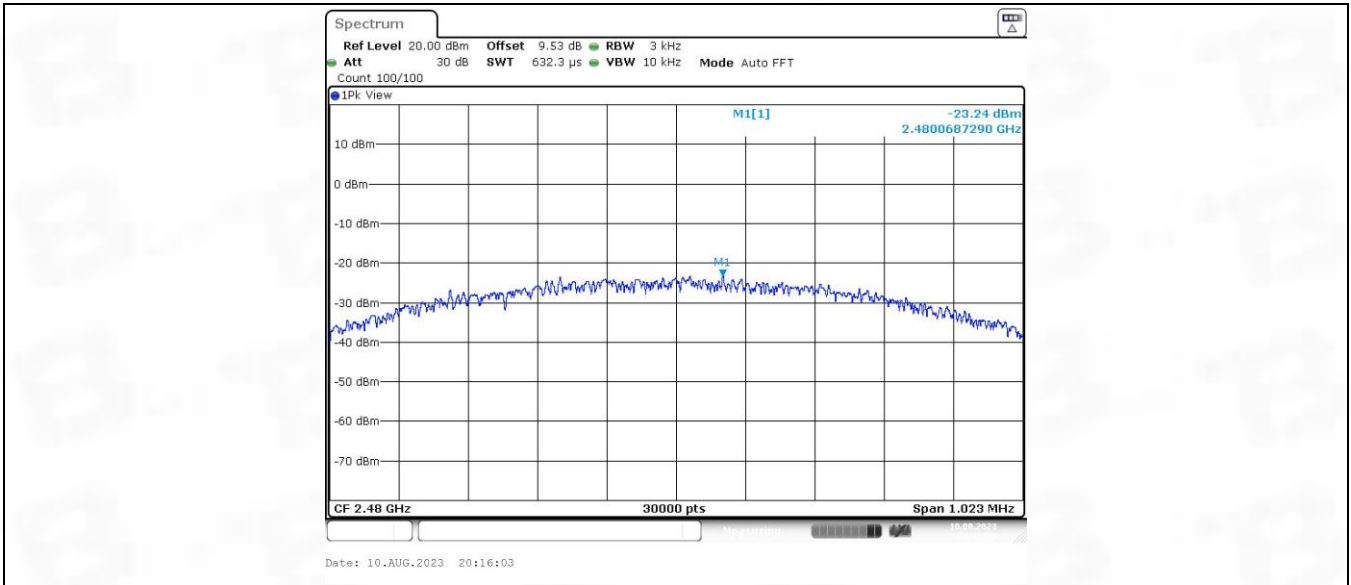
4.1 PSD

4.1.1 Test Result

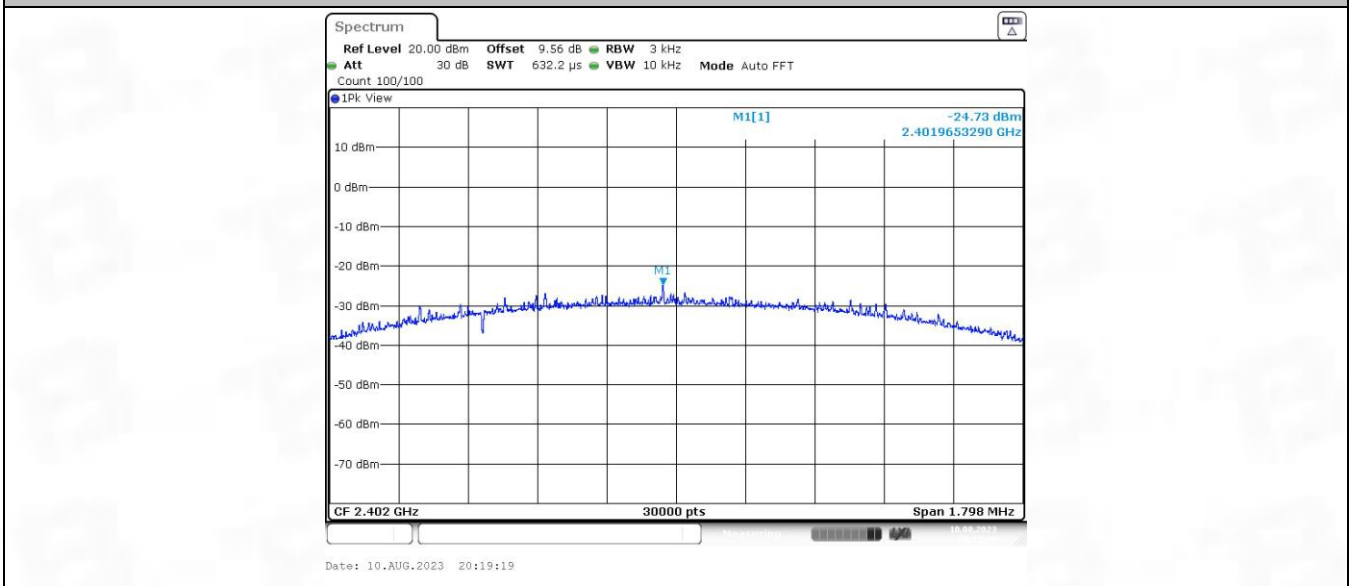
TestMode	Antenna	Freq(MHz)	Result[dBm/3kHz]	Limit[dBm/3kHz]	Verdict
BLE_1M	Ant1	2402	-22.88	≤8.00	PASS
		2440	-22.63	≤8.00	PASS
		2480	-23.24	≤8.00	PASS
BLE_2M	Ant1	2402	-24.73	≤8.00	PASS
		2440	-24.88	≤8.00	PASS
		2480	-25.06	≤8.00	PASS

4.1.2 Test Graph

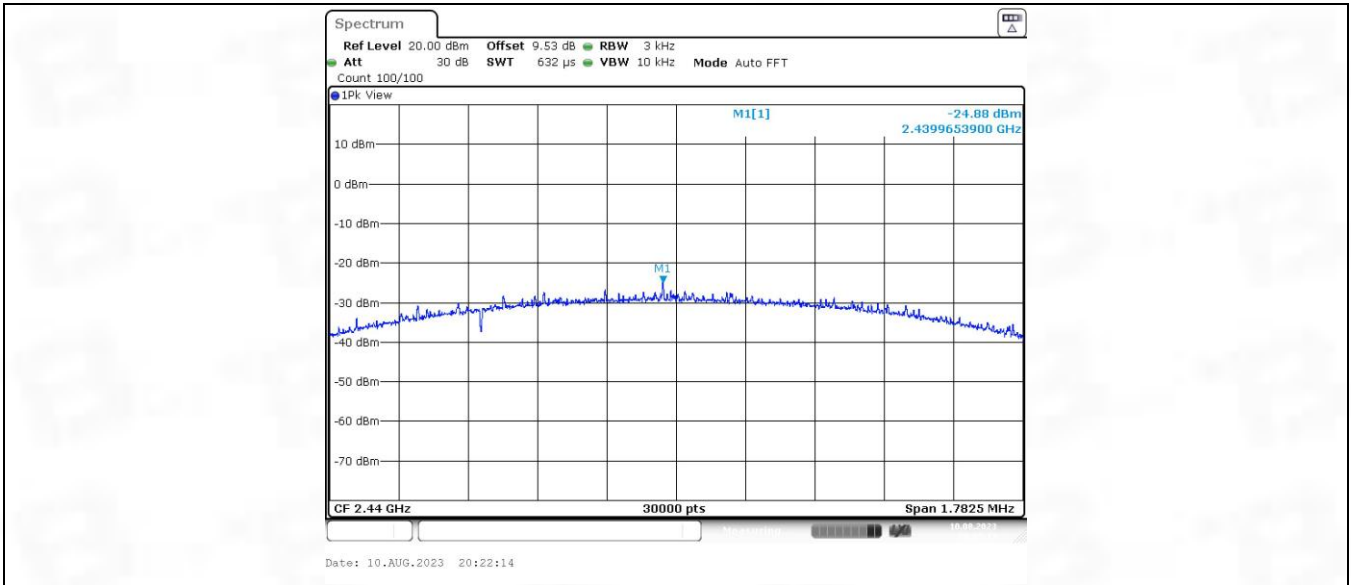




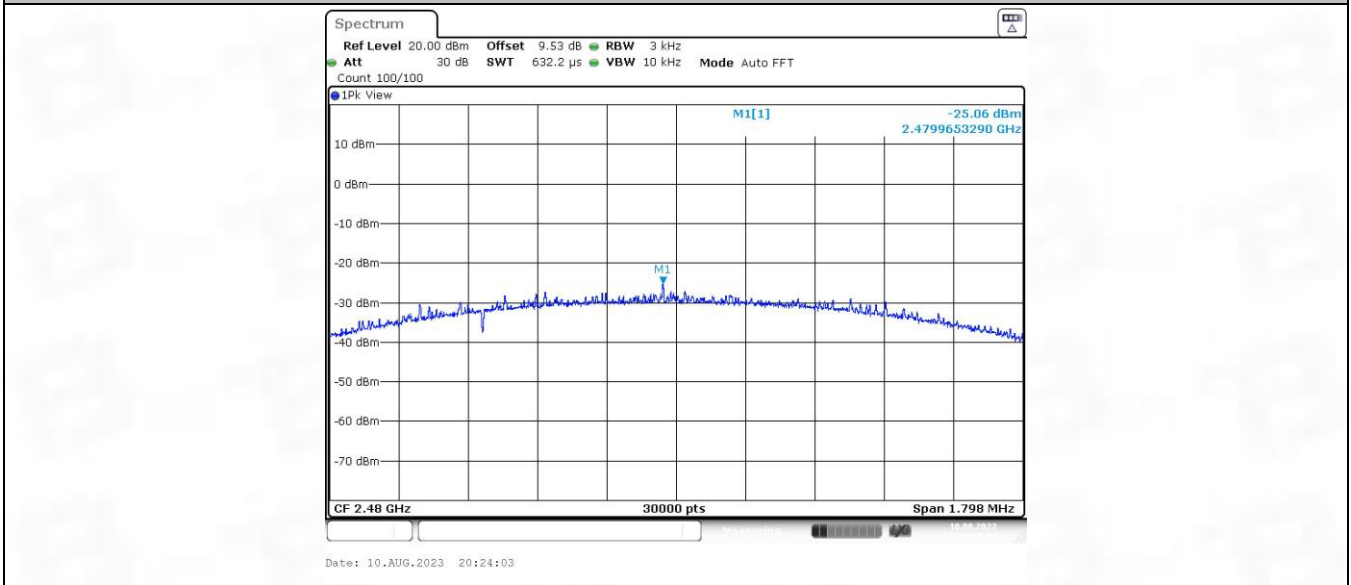
BLE_2M_Ant1_2402



BLE_2M_Ant1_2440



BLE_2M_Ant1_2480



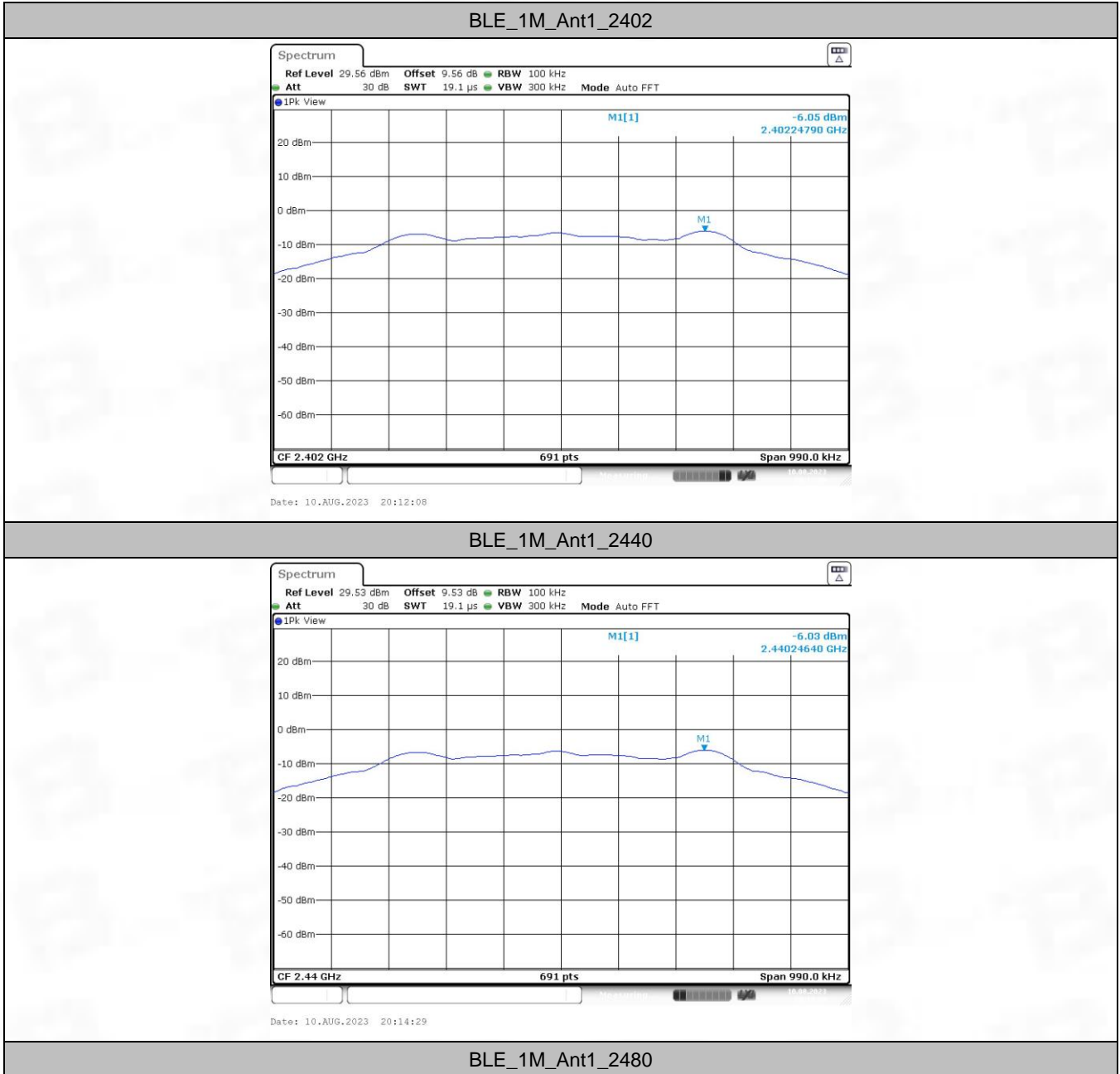
5. Unwanted Emissions In Non-restricted Frequency Bands

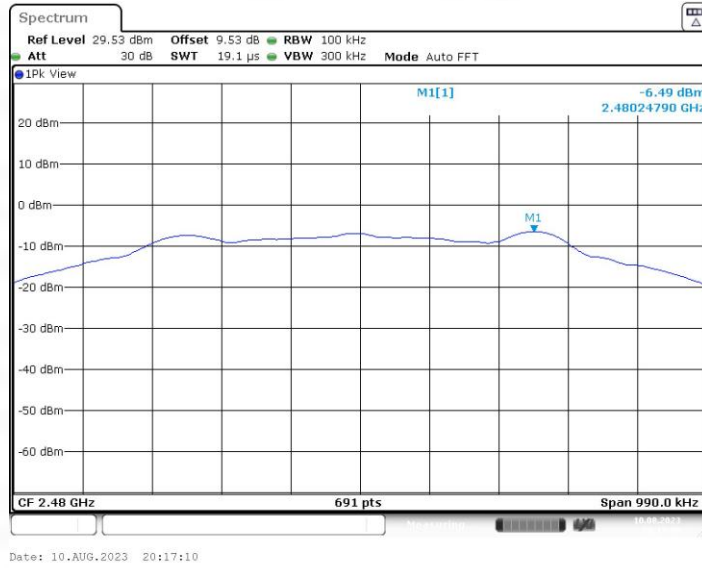
5.1 Ref

5.1.1 Test Result

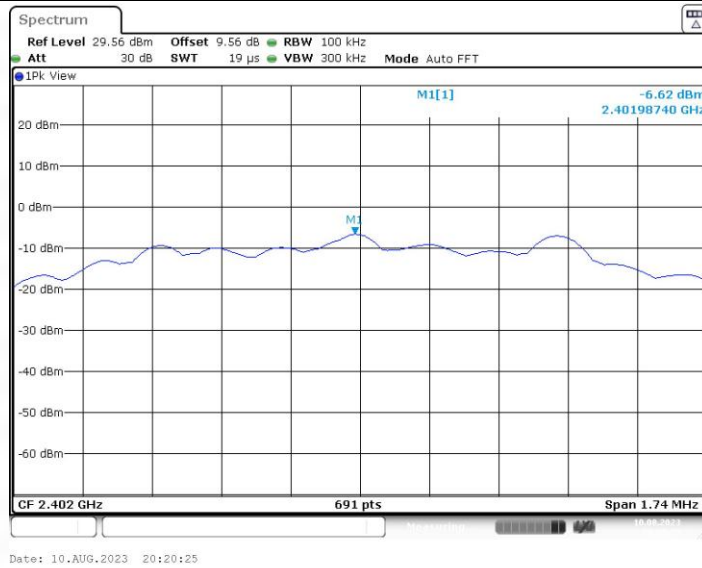
TestMode	Antenna	Freq(MHz)	Max.Point[MHz]	Result[dBm]
BLE_1M	Ant1	2402	2402.25	-6.05
		2440	2440.25	-6.03
		2480	2480.25	-6.49
BLE_2M	Ant1	2402	2401.99	-6.62
		2440	2439.99	-6.44
		2480	2479.99	-7.04

5.1.2 Test Graph

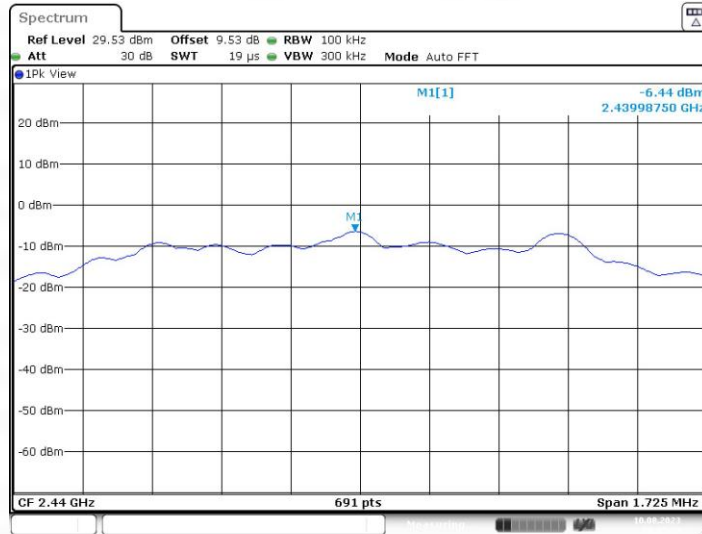




BLE_2M_Ant1_2402

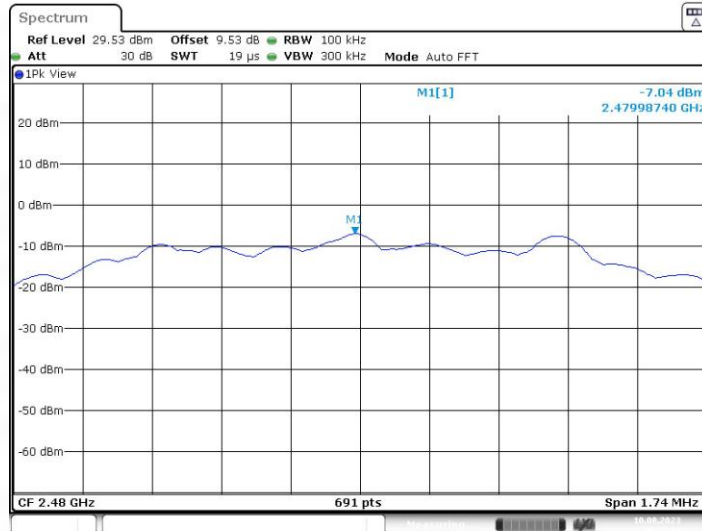


BLE_2M_Ant1_2440



Date: 10.AUG.2023 20:22:22

BLE_2M_Ant1_2480



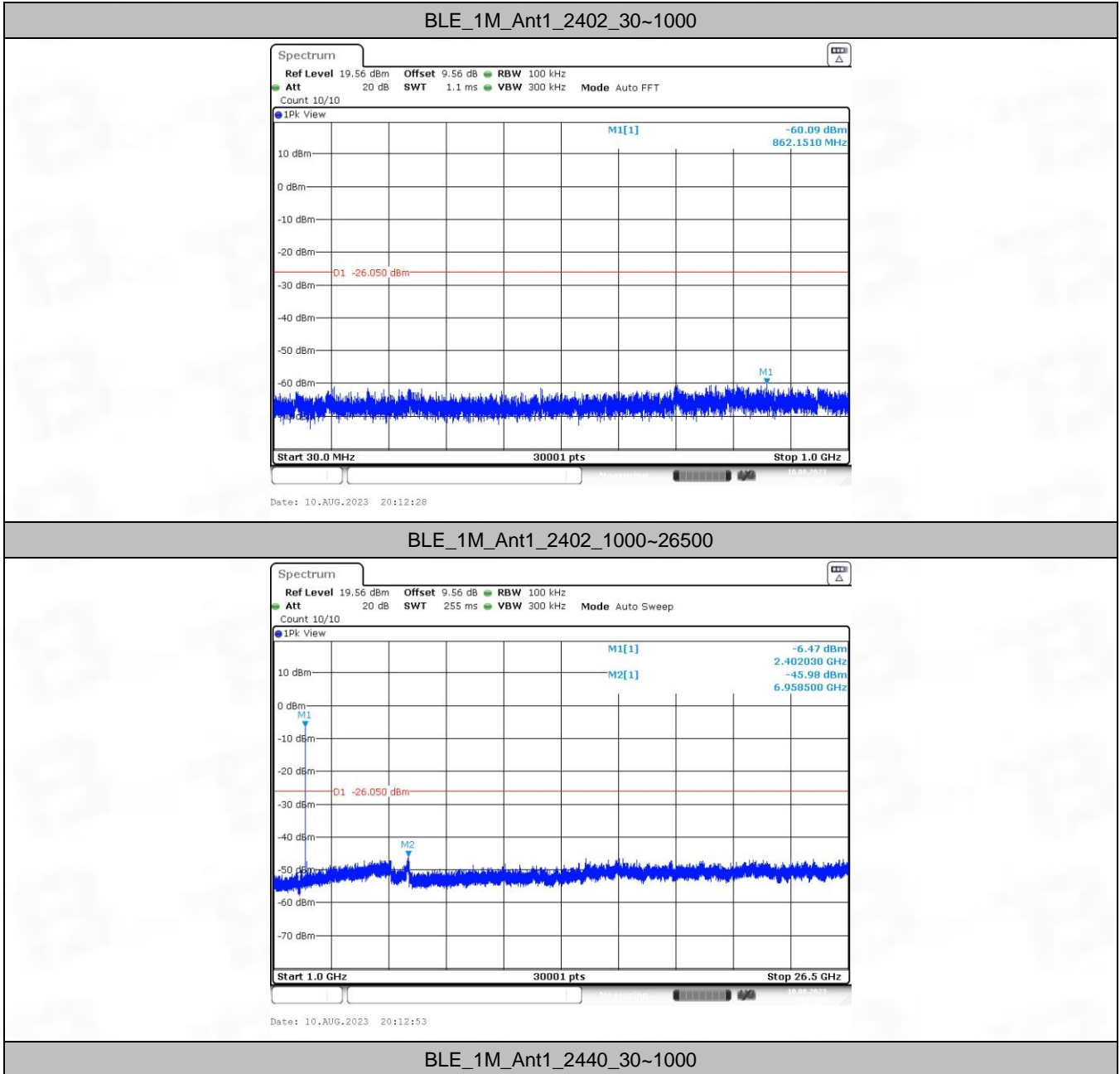
Date: 10.AUG.2023 20:25:10

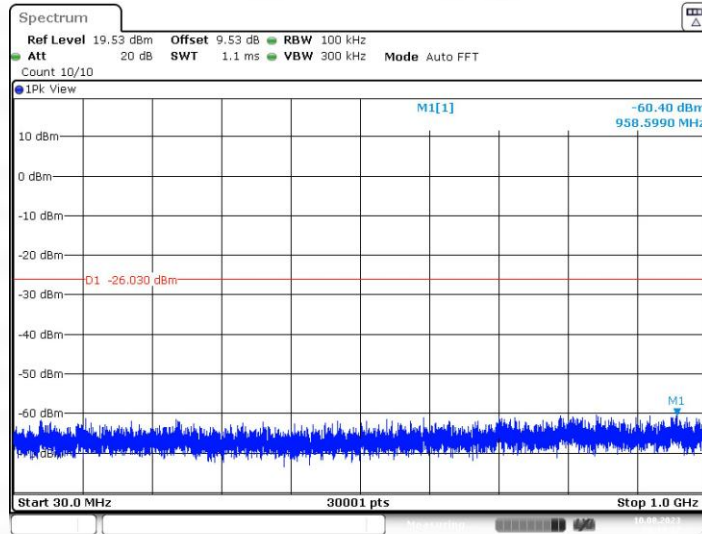
5.2 CSE

5.2.1 Test Result

TestMode	Antenna	Freq(MHz)	FreqRange [MHz]	RefLevel [dBm]	Result[dBm]	Limit[dBm]	Verdict
BLE_1M	Ant1	2402	30~1000	-6.05	-60.09	≤-26.05	PASS
			1000~26500	-6.05	-45.98	≤-26.05	PASS
		2440	30~1000	-6.03	-60.4	≤-26.03	PASS
			1000~26500	-6.03	-33.77	≤-26.03	PASS
		2480	30~1000	-6.49	-59.8	≤-26.49	PASS
			1000~26500	-6.49	-46.13	≤-26.49	PASS
BLE_2M	Ant1	2402	30~1000	-6.62	-59.23	≤-26.62	PASS
			1000~26500	-6.62	-45.94	≤-26.62	PASS
		2440	30~1000	-6.44	-59.6	≤-26.44	PASS
			1000~26500	-6.44	-45.79	≤-26.44	PASS
		2480	30~1000	-7.04	-59.51	≤-27.04	PASS
			1000~26500	-7.04	-45.52	≤-27.04	PASS

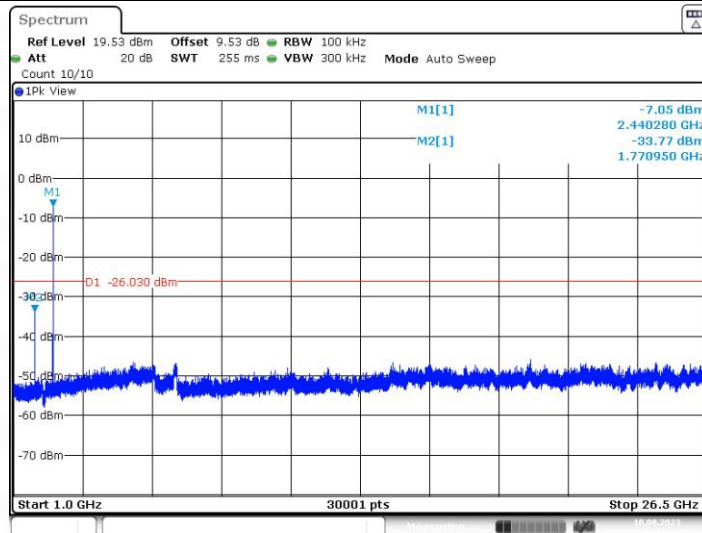
5.2.2 Test Graph





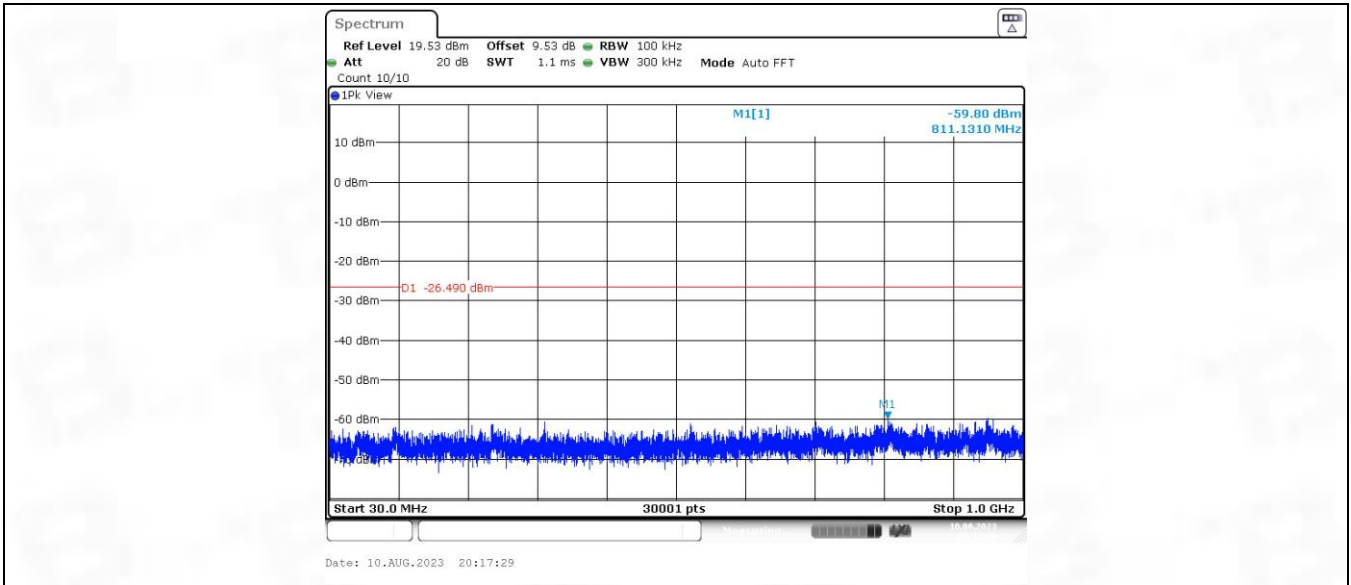
Date: 10.AUG.2023 20:14:37

BLE_1M_Ant1_2440_1000~26500

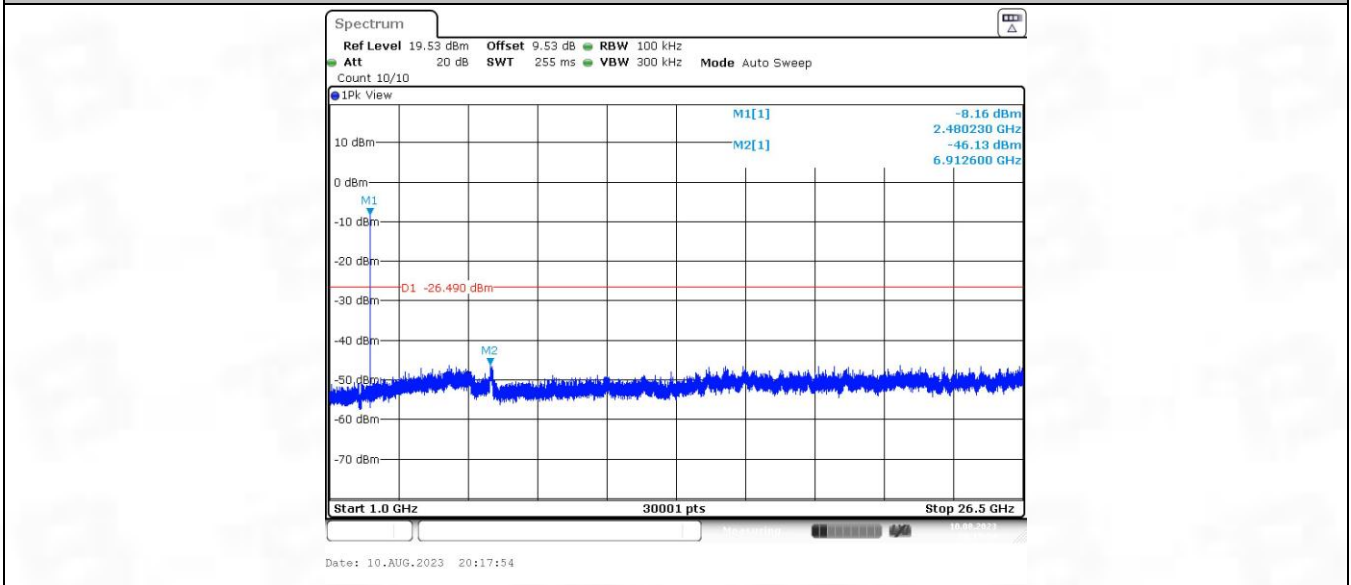


Date: 10.AUG.2023 20:15:02

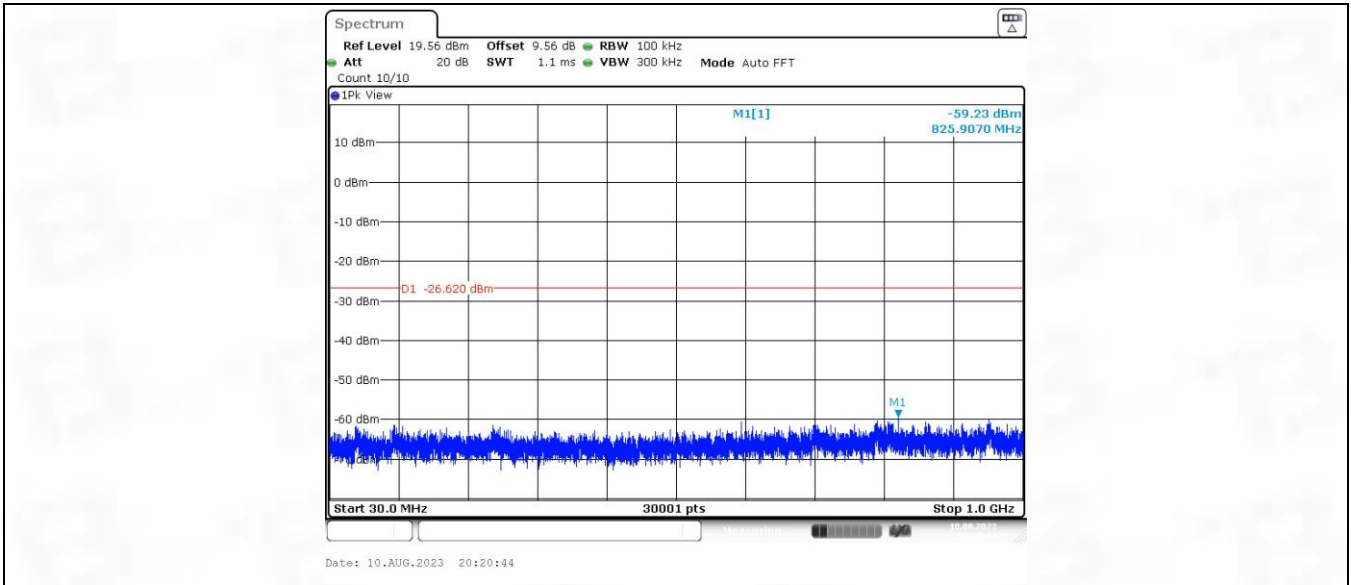
BLE_1M_Ant1_2480_30~1000



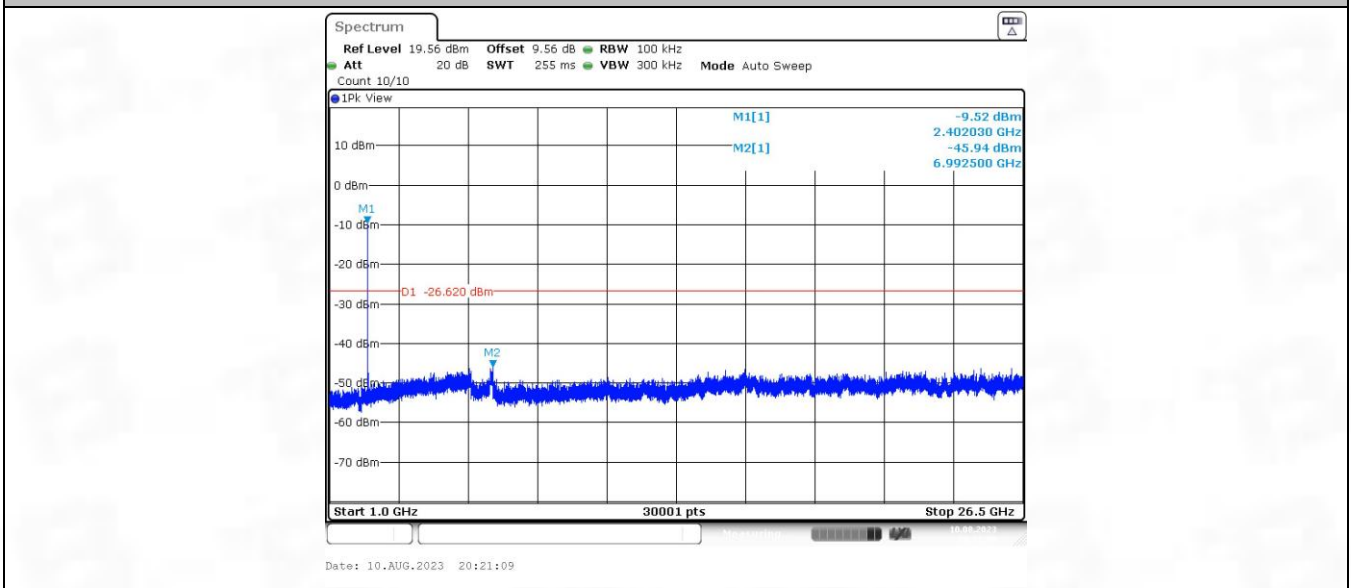
BLE_1M_Ant1_2480_1000~26500



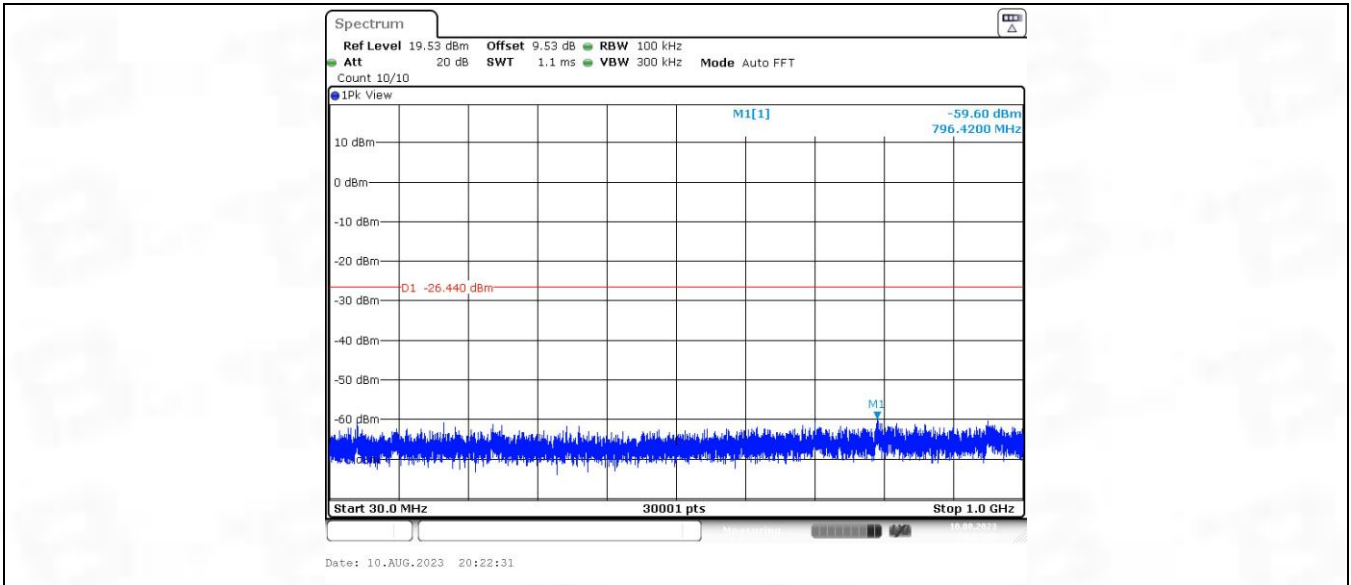
BLE_2M_Ant1_2402_30~1000



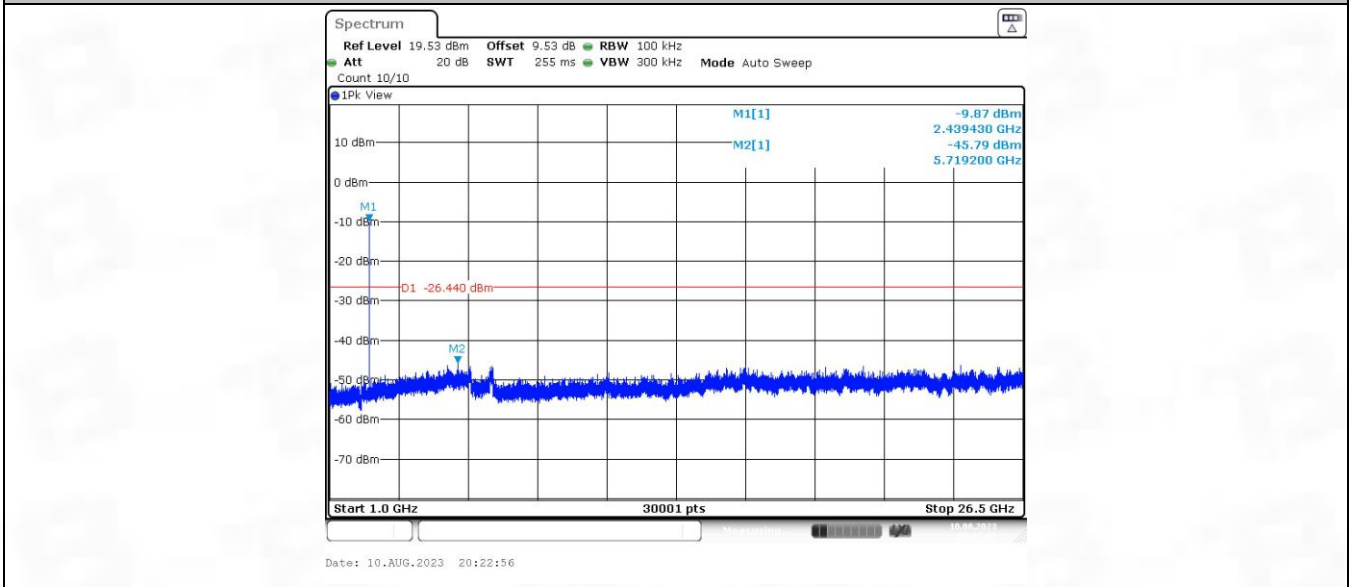
BLE_2M_Ant1_2402_1000~26500



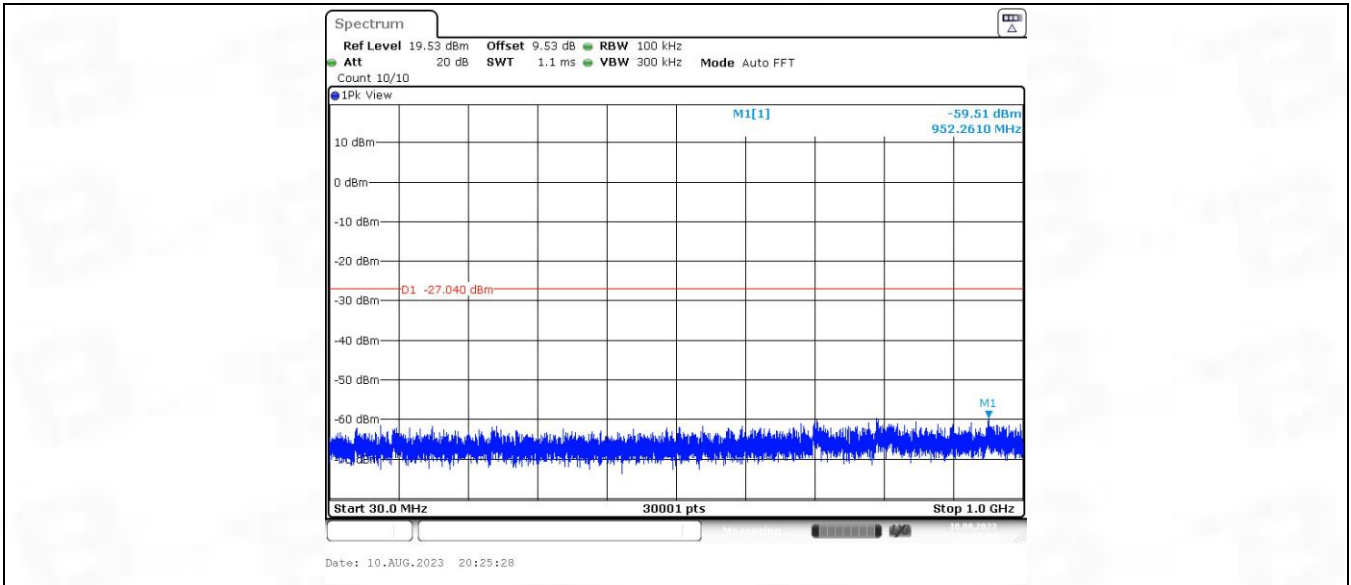
BLE_2M_Ant1_2440_30~1000



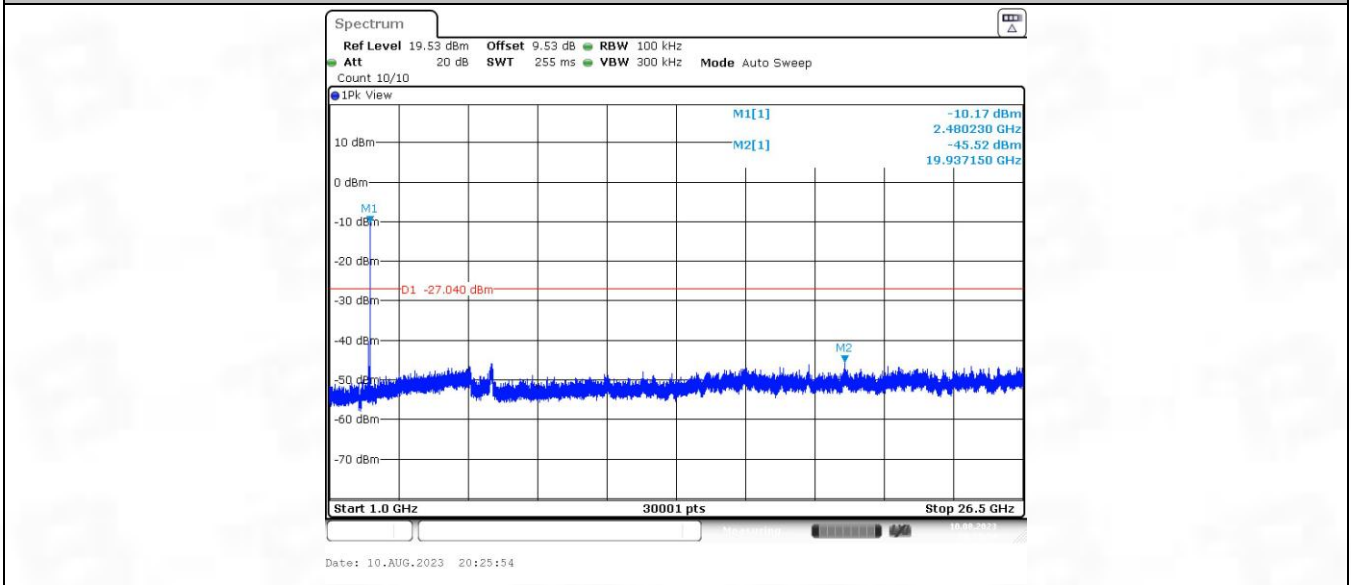
BLE_2M_Ant1_2440_1000~26500



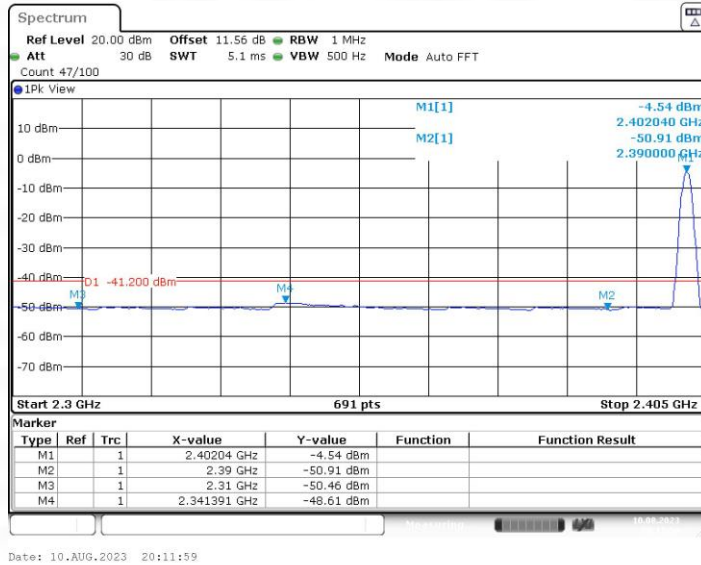
BLE_2M_Ant1_2480_30~1000



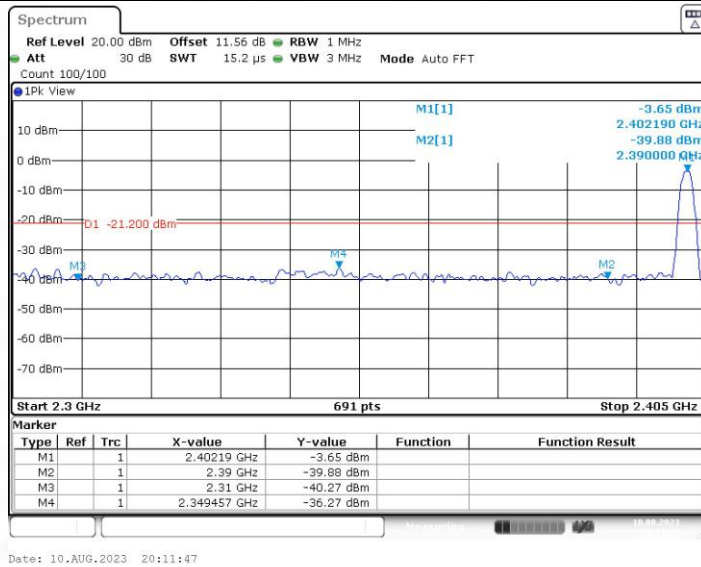
BLE_2M_Ant1_2480_1000~26500



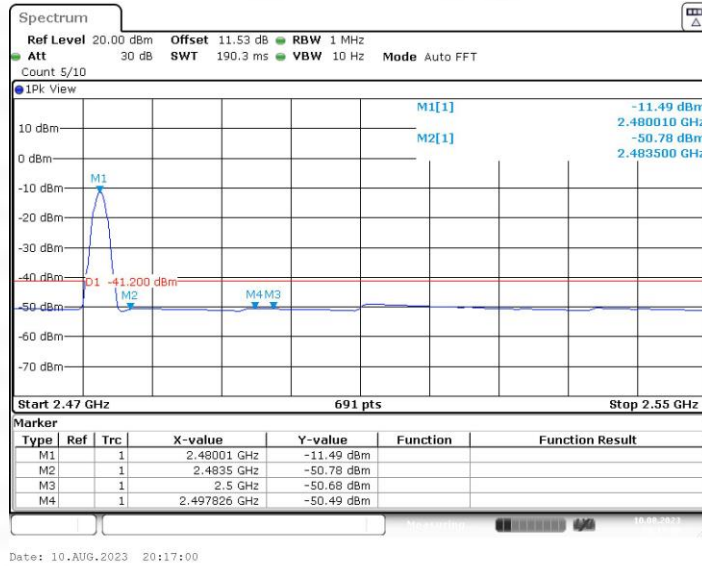
BLE_1M_Ant1_Low_2402_AV



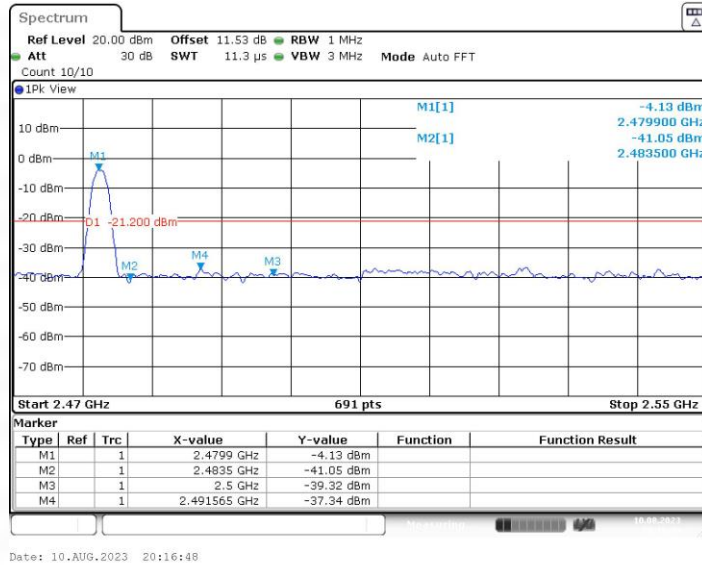
BLE_1M_Ant1_Low_2402_Peak



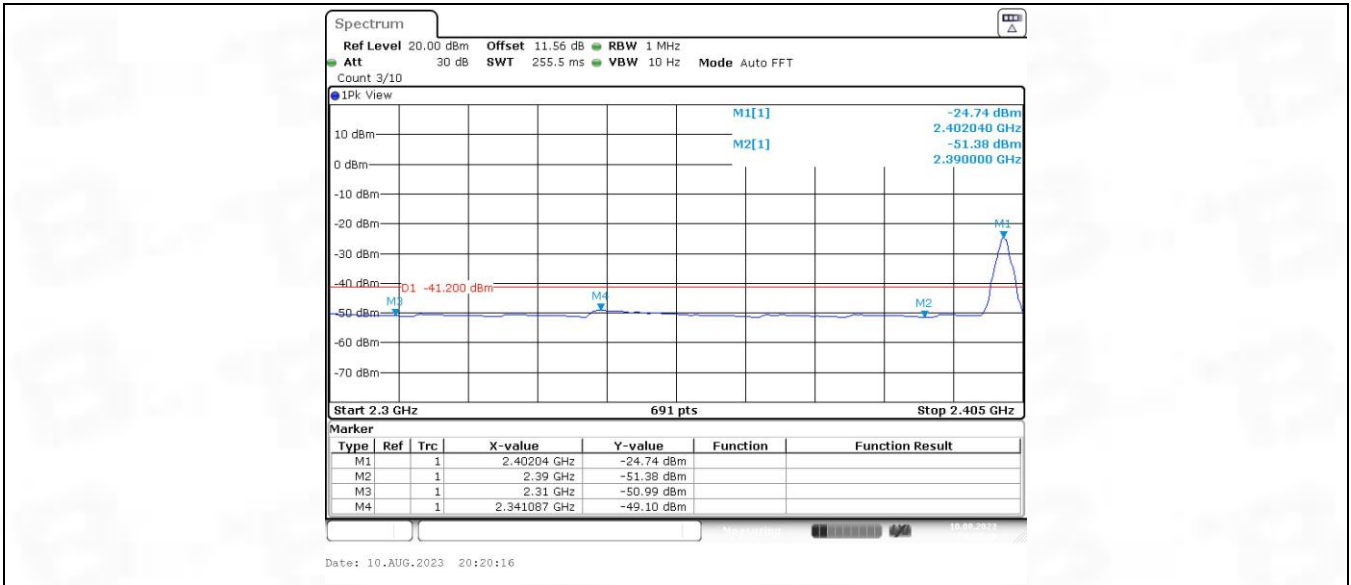
BLE_1M_Ant1_High_2480_AV



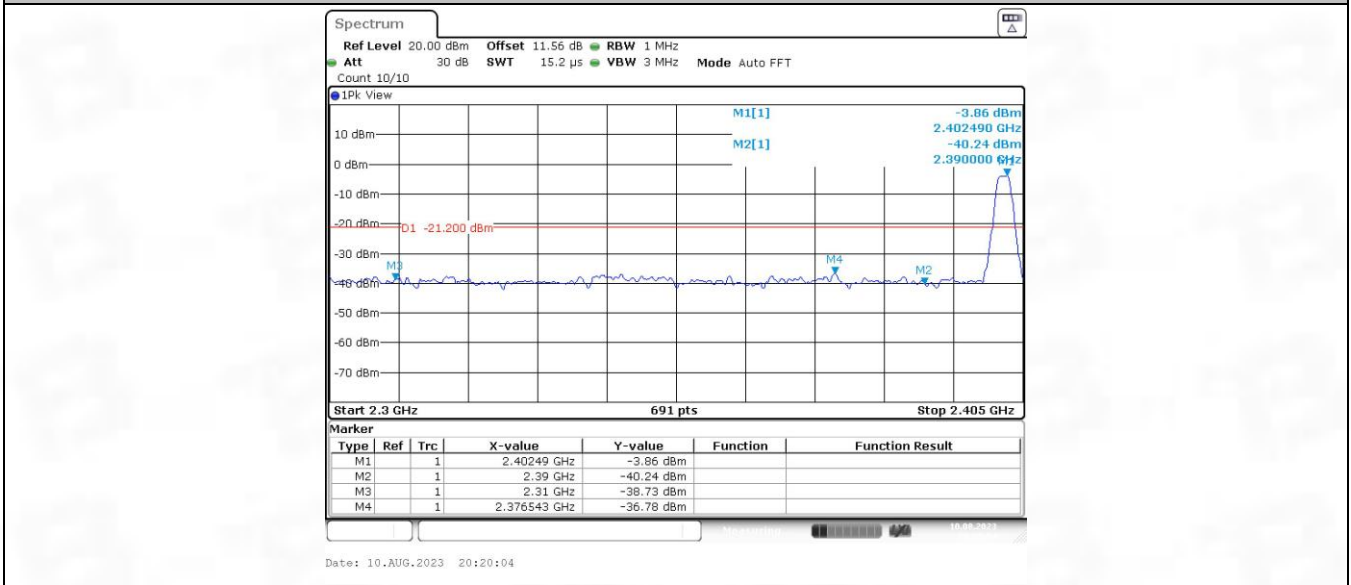
BLE_1M_Ant1_High_2480_Peak



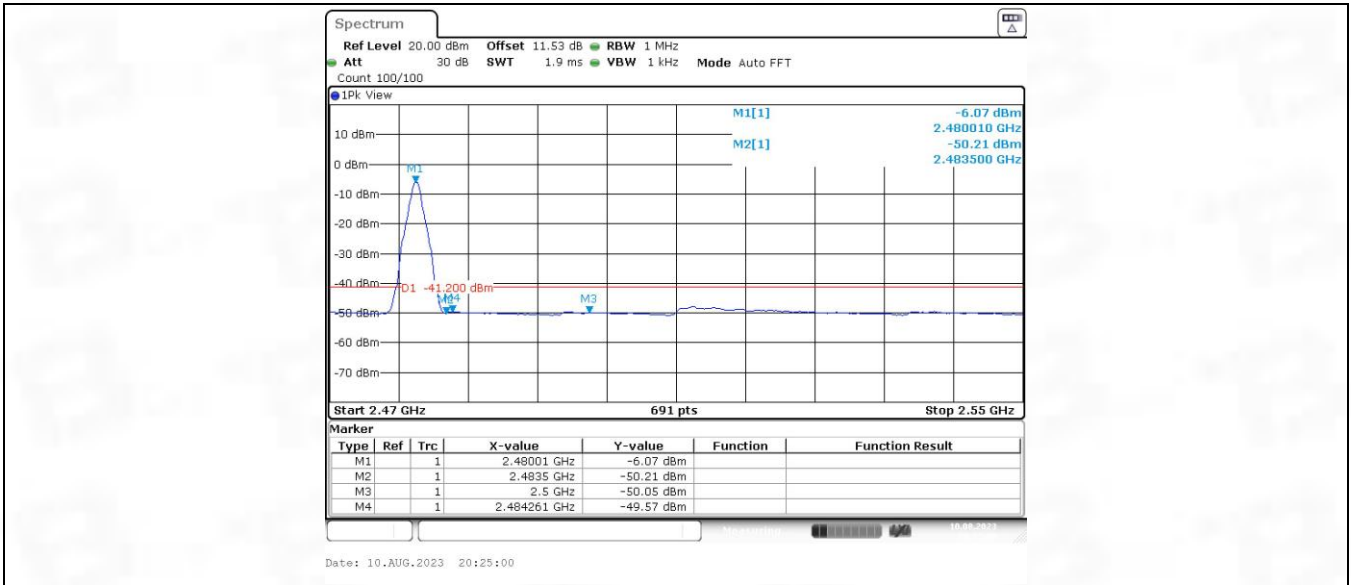
BLE_2M_Ant1_Low_2402_AV



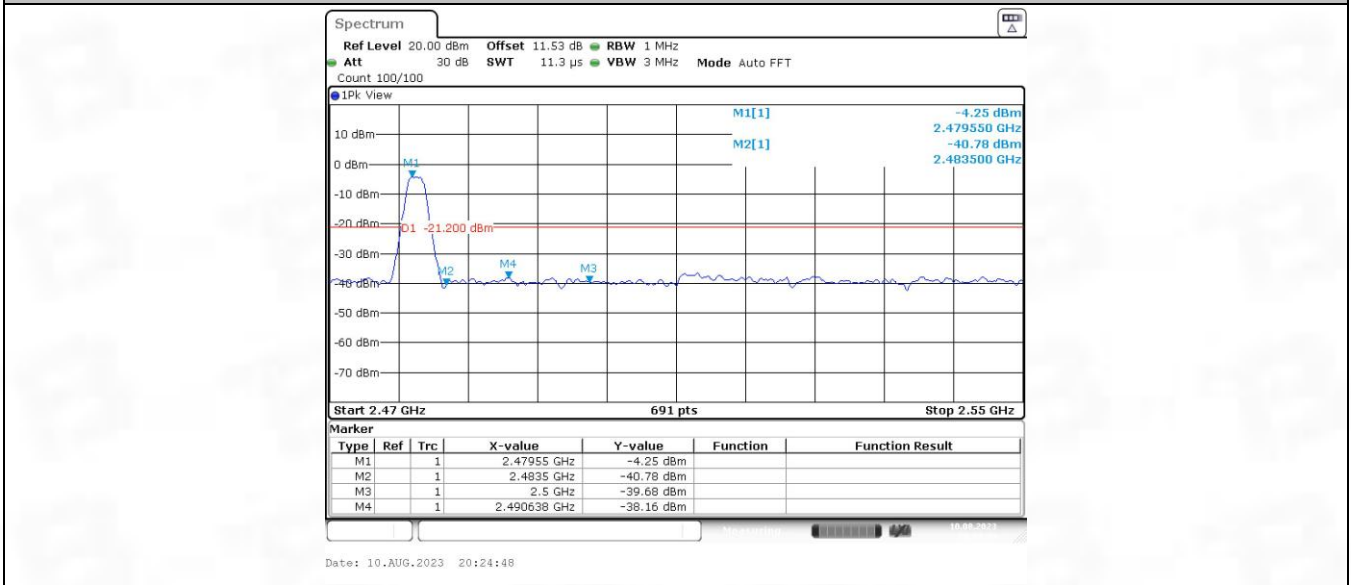
BLE_2M_Ant1_Low_2402_Peak



BLE_2M_Ant1_High_2480_AV



BLE_2M_Ant1_High_2480_Peak



6. Form731

6.1 Form731

6.1.1 Test Result

Lower Freq (MHz)	High Freq (MHz)	MAX Power (W)	MAX Power (dBm)
2402	2480	0.00138	1.41



Test Report Number: BTF230817R00402



BTF Testing Lab (Shenzhen) Co., Ltd.

F101, 201 and 301, Building 1, Block 2, Tantou Industrial Park, Tantou Community, Songgang Street,
Bao'an District, Shenzhen, China

www.btf-lab.com

-- END OF REPORT --