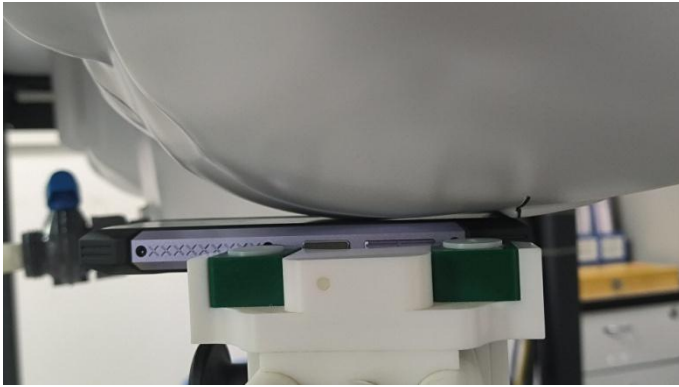
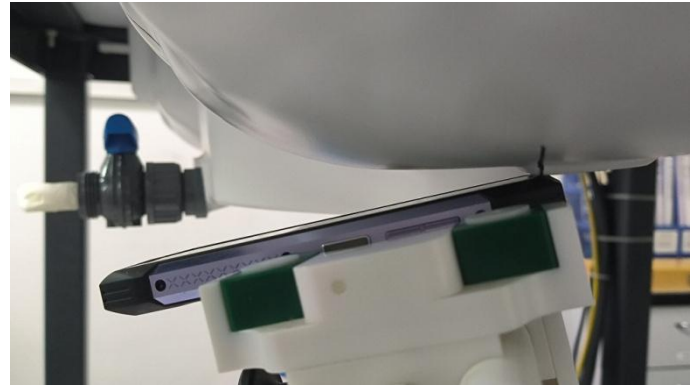


Test Positions

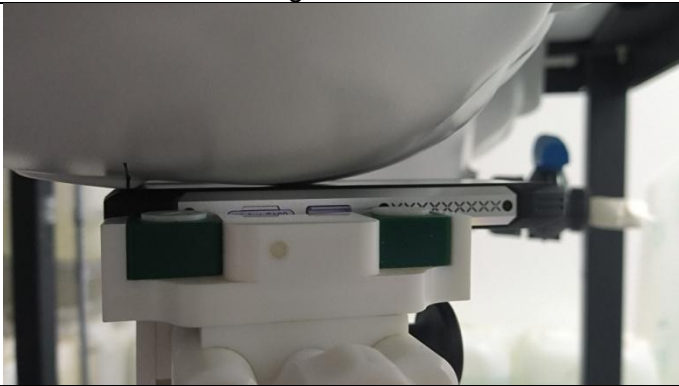
Left Cheek



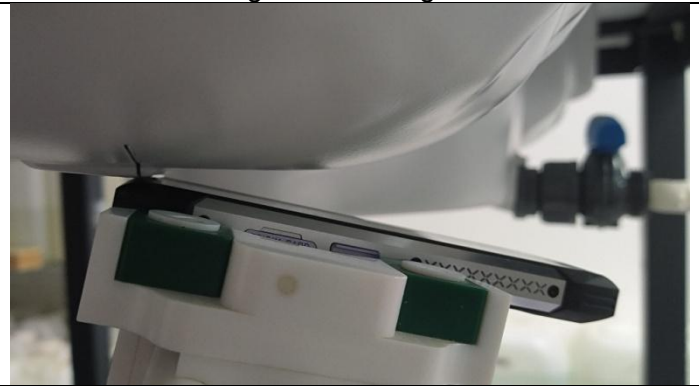
Left Tilt 15 Degree



Right Cheek

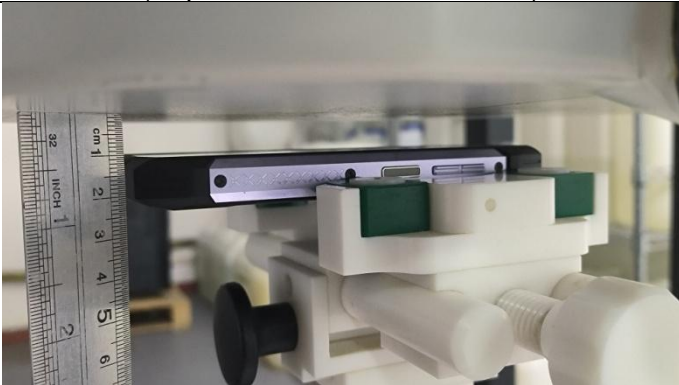


Right Tilt 15 Degree



Front Side

(Separation distance of 10mm)



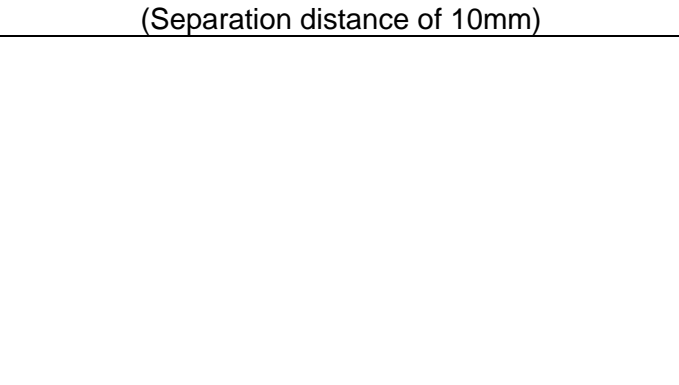
Back Side

(Separation distance of 10mm)



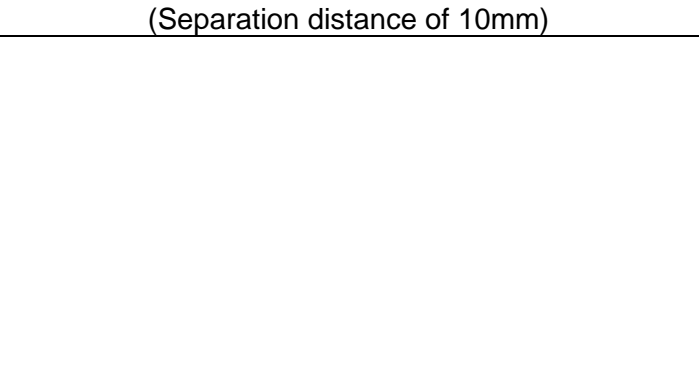
Left Side

(Separation distance of 10mm)



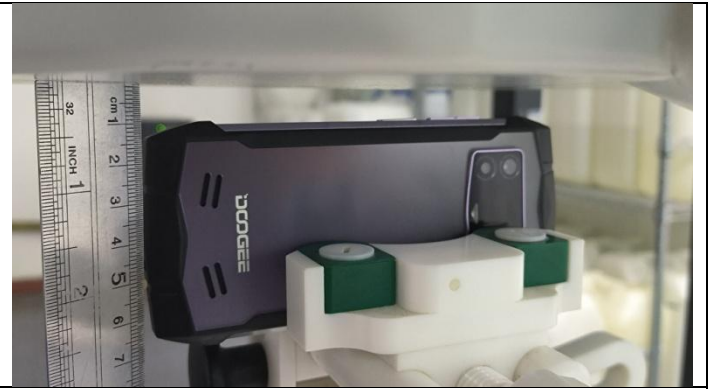
Right Side

(Separation distance of 10mm)

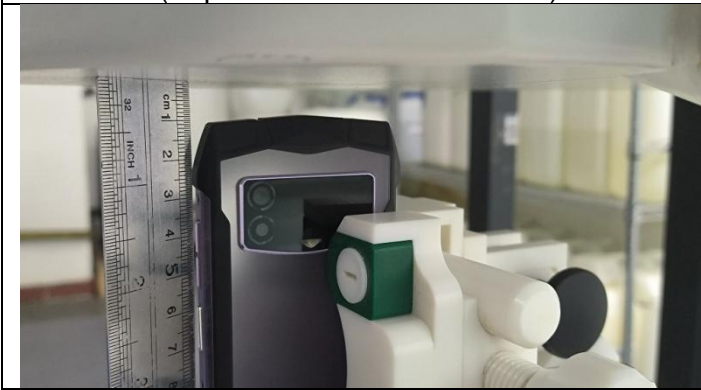




Top Side
(Separation distance of 10mm)



Bottom Side
(Separation distance of 10mm)



END