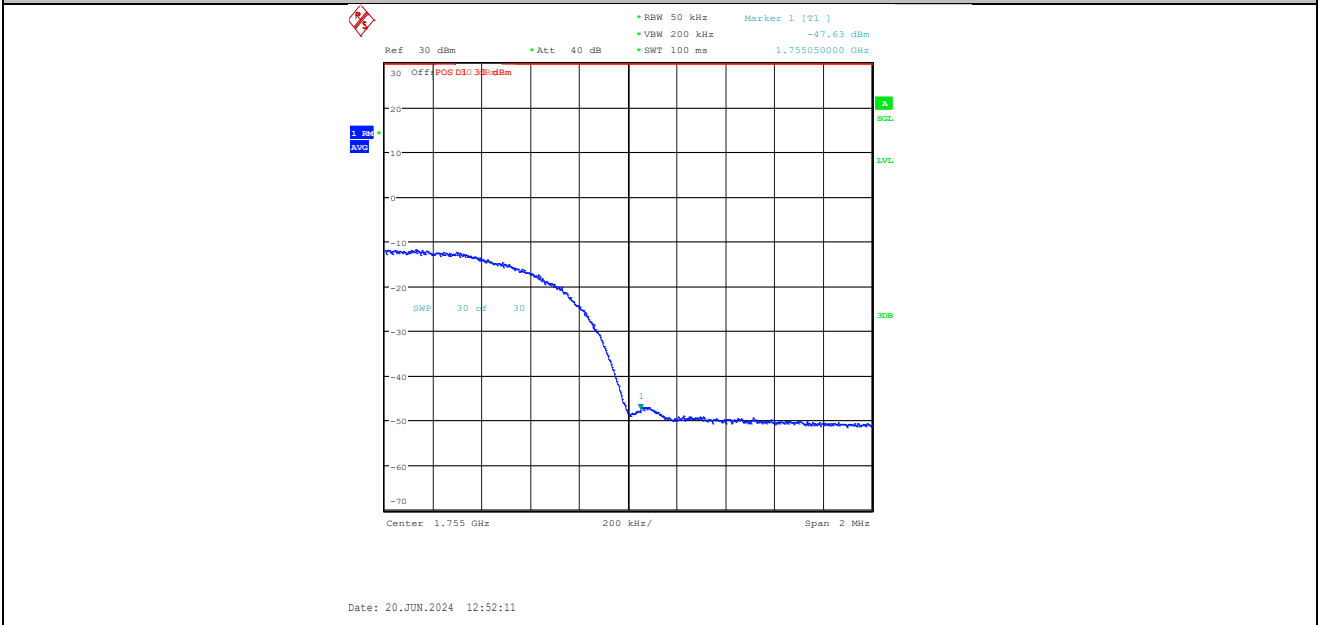
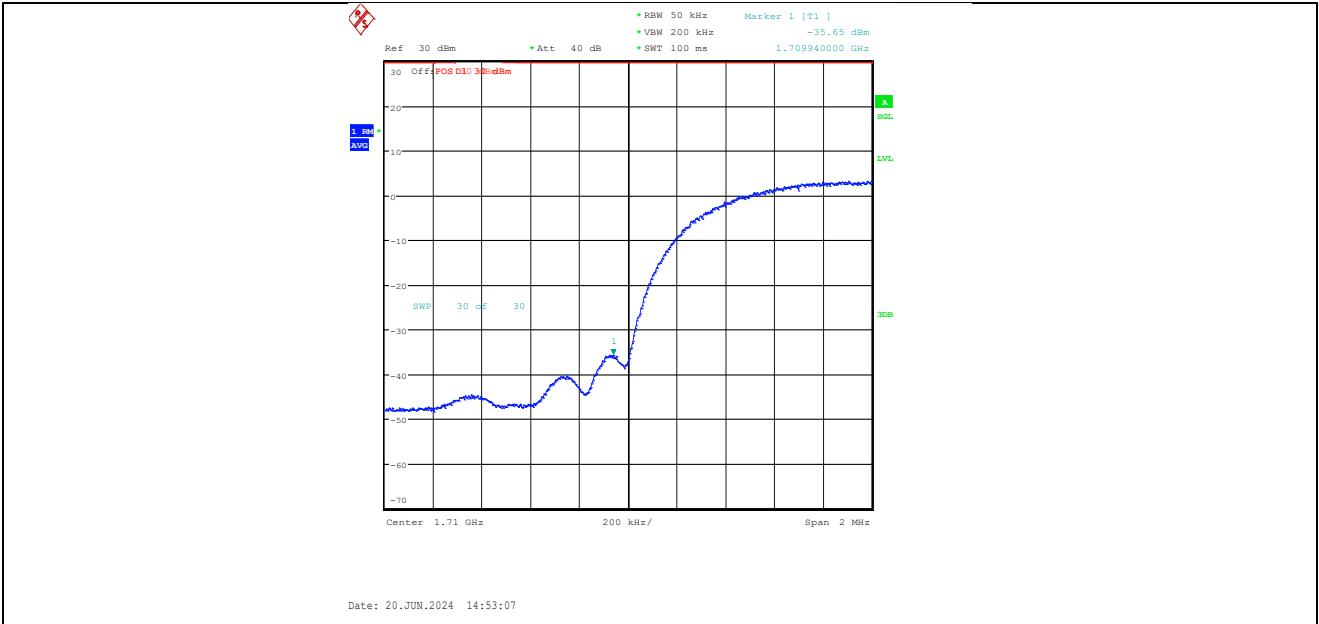


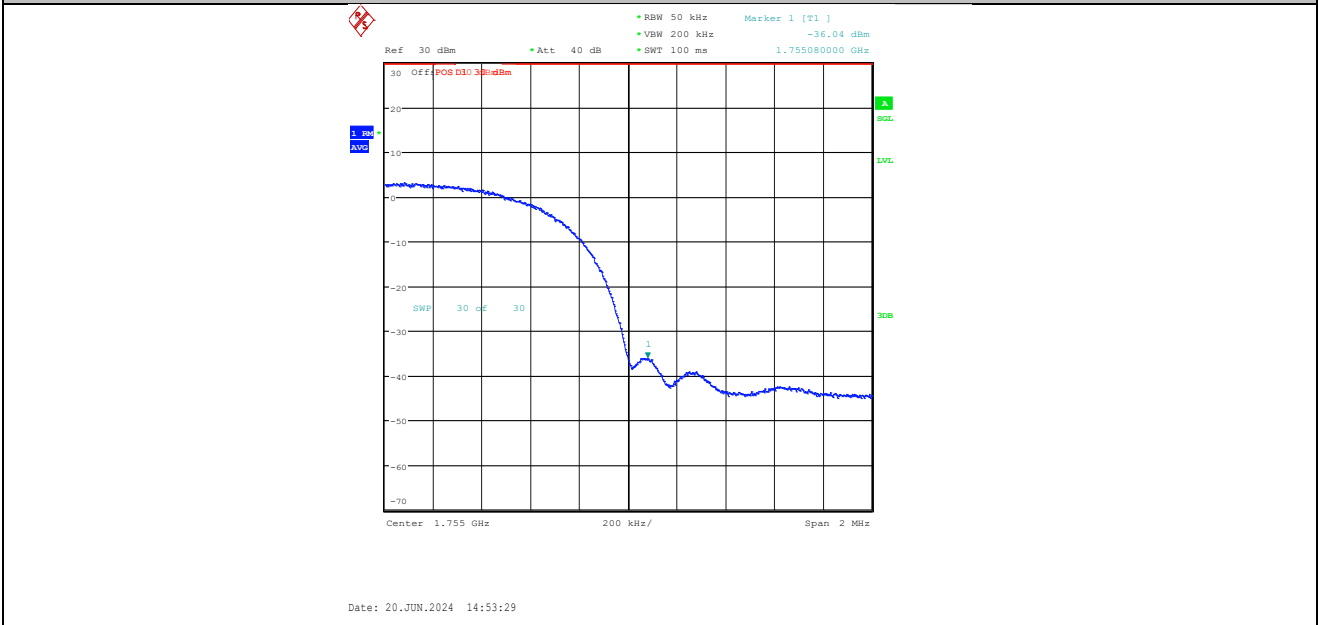
Band4-1312-4-PASS



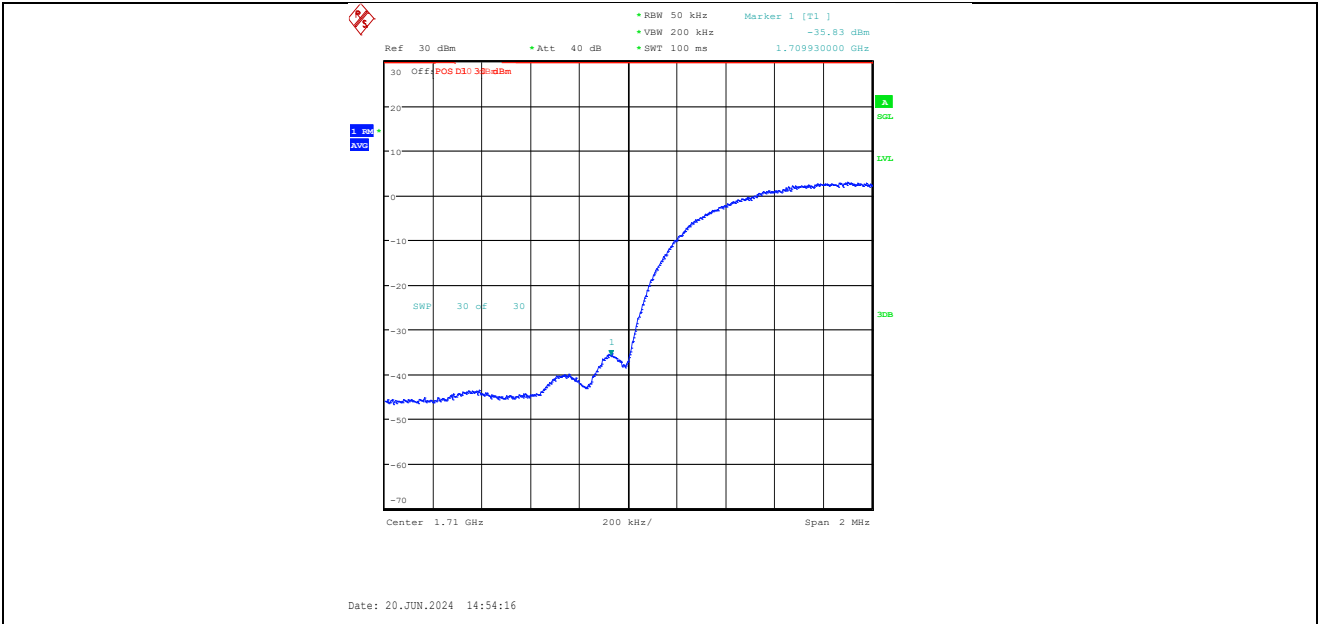
Band4-1513-4-PASS



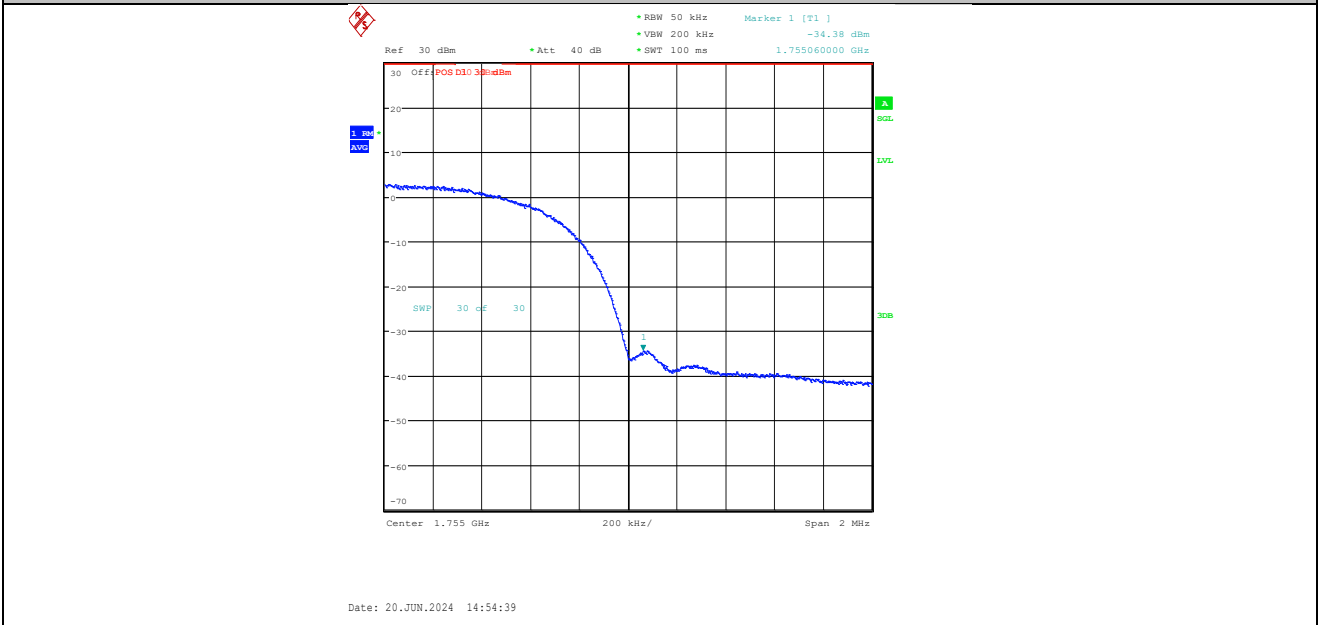
Band4-1312-1-PASS



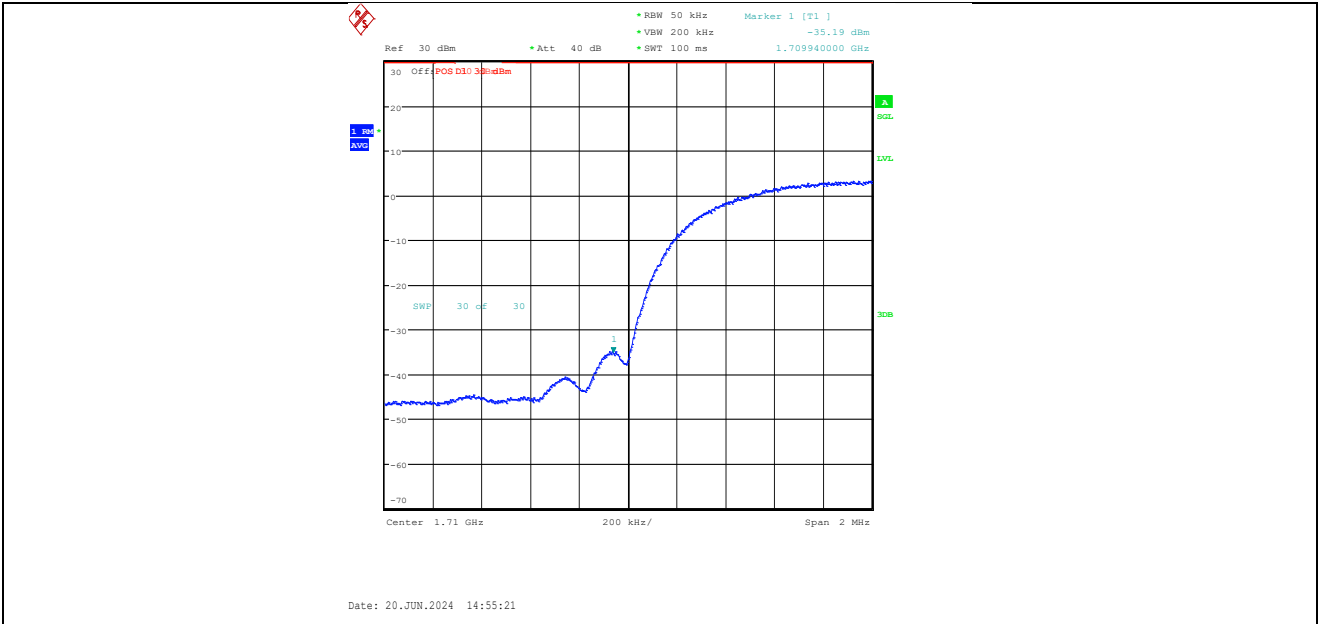
Band4-1513-1-PASS



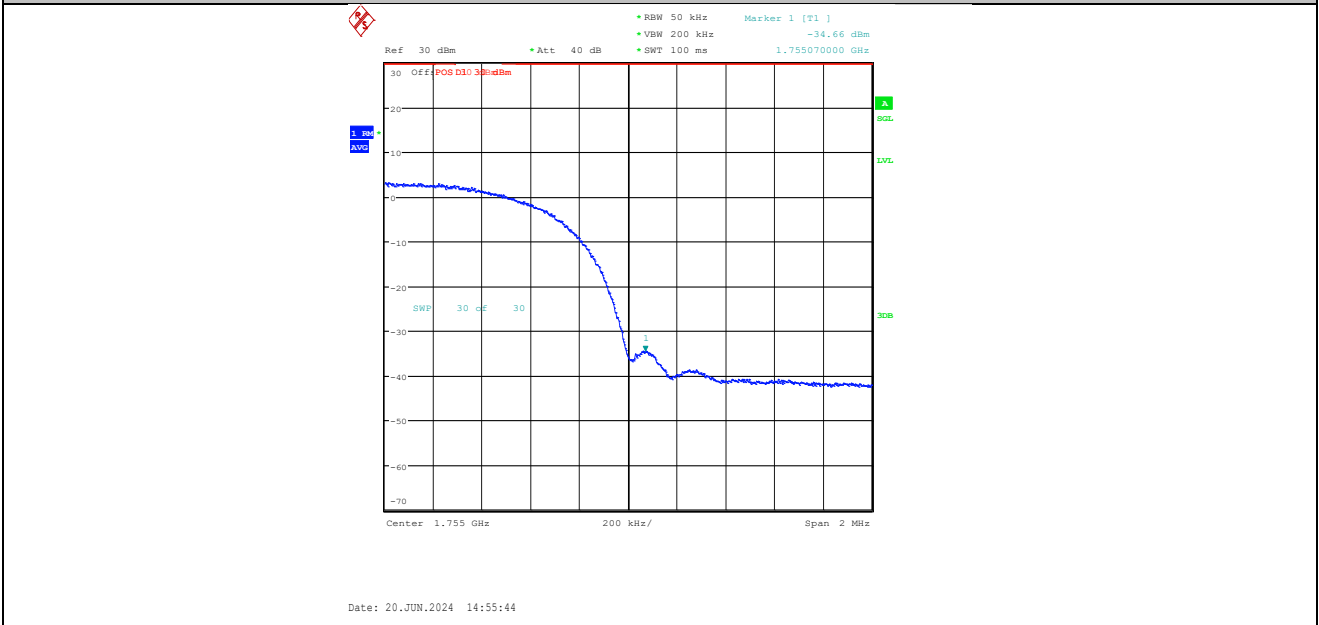
Band4-1312-2-PASS



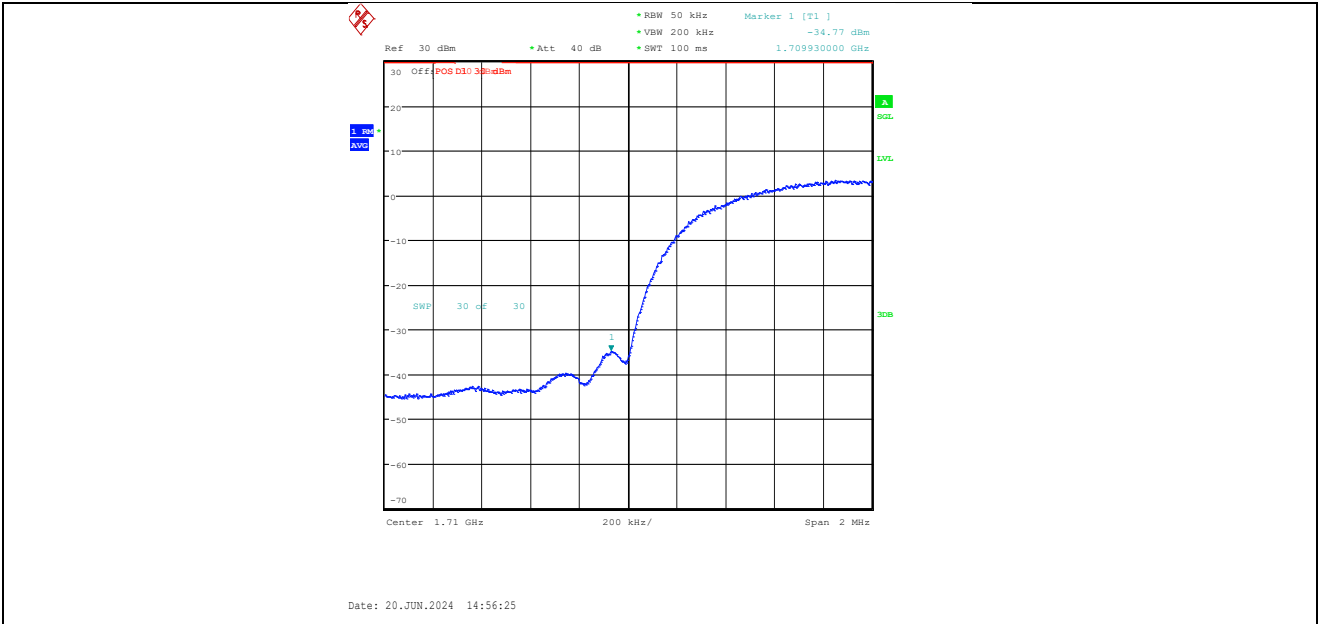
Band4-1513-2-PASS



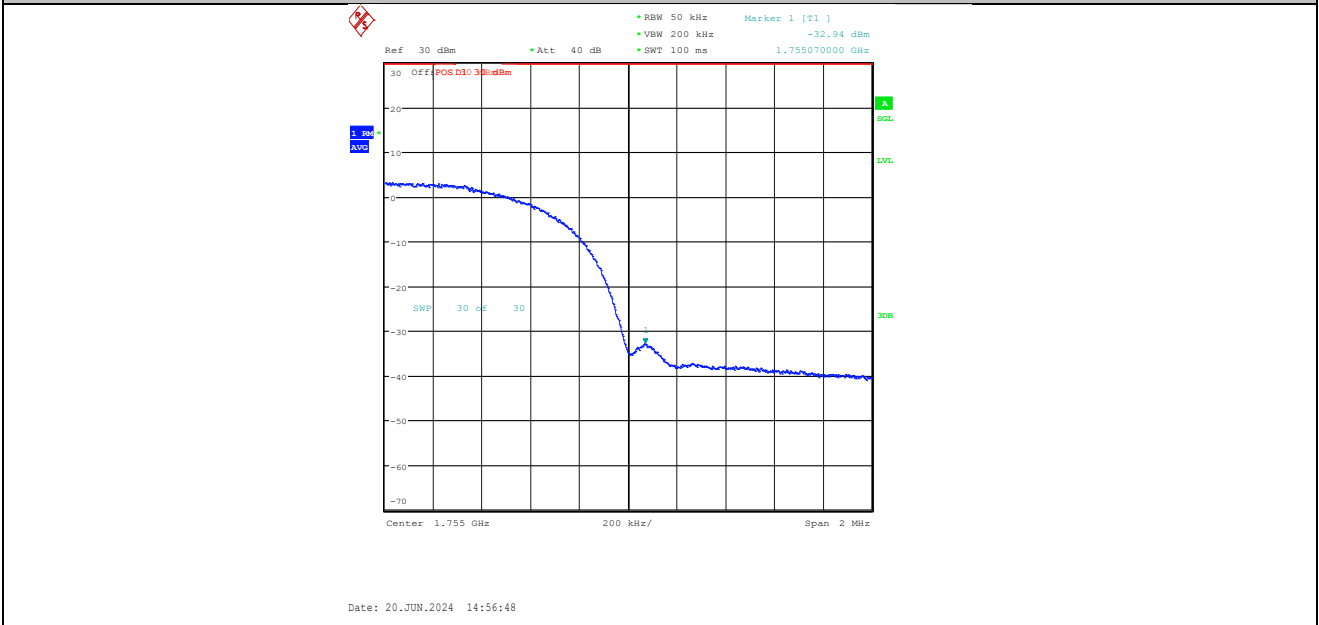
Band4-1312-3-PASS



Band4-1513-3-PASS



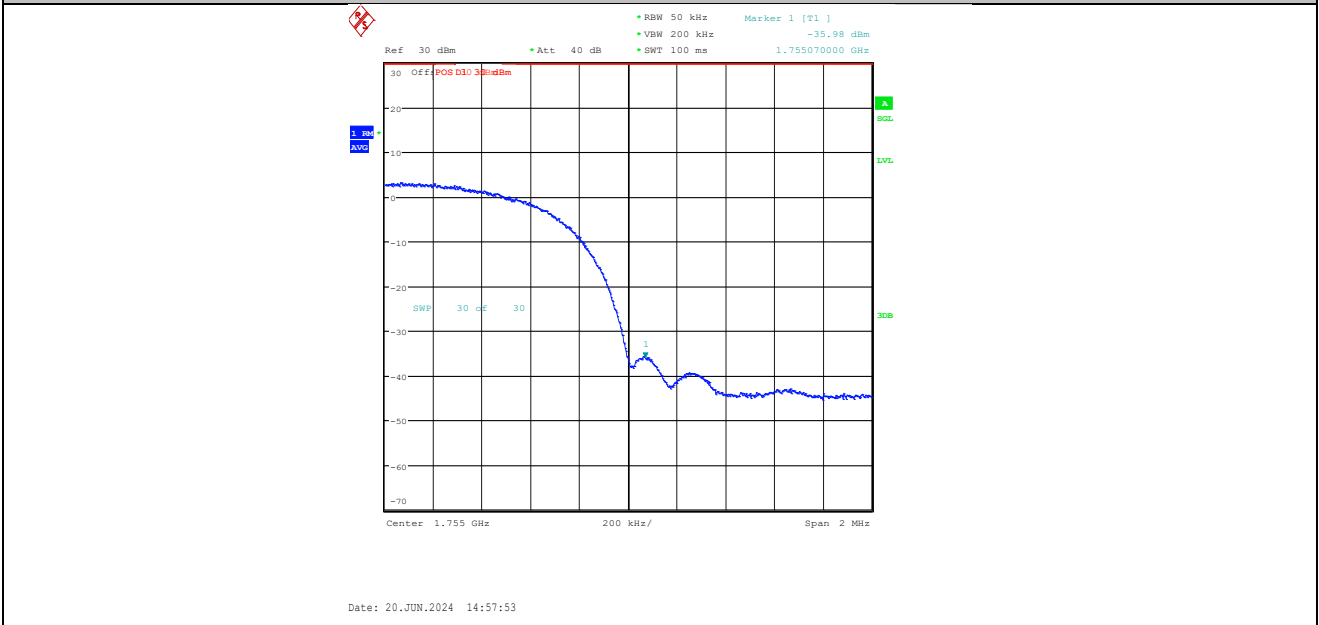
Band4-1312-4-PASS



Band4-1513-4-PASS



Band4-1312-5-PASS



Band4-1513-5-PASS

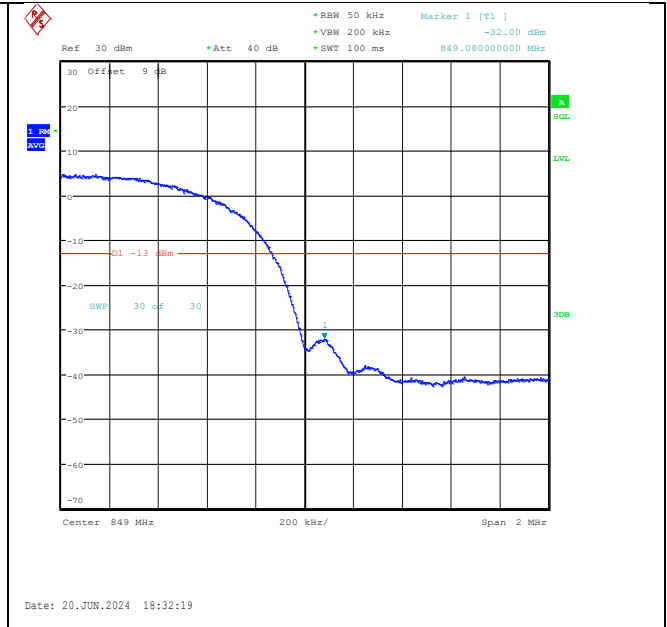
Band	Channel	Frequency (MHz)	Result (dBm)	Limit(dBm)	Verdict
Band5	4132	823.95	-30.21	-13	PASS
Band5	4233	849.08	-32.00	-13	PASS

Band	Channel	SubTest	Frequency (MHz)	Result (dBm)	Limit(dBm)	Verdict
Band5	4132	1	823.94	-31.23	-13	PASS
Band5	4233	1	849.06	-33.05	-13	PASS
Band5	4132	2	823.92	-31.23	-13	PASS
Band5	4233	2	849.08	-34.28	-13	PASS
Band5	4132	3	823.92	-31.98	-13	PASS
Band5	4233	3	849.28	-35.19	-13	PASS
Band5	4132	4	823.74	-31.72	-13	PASS
Band5	4233	4	849.27	-35.11	-13	PASS

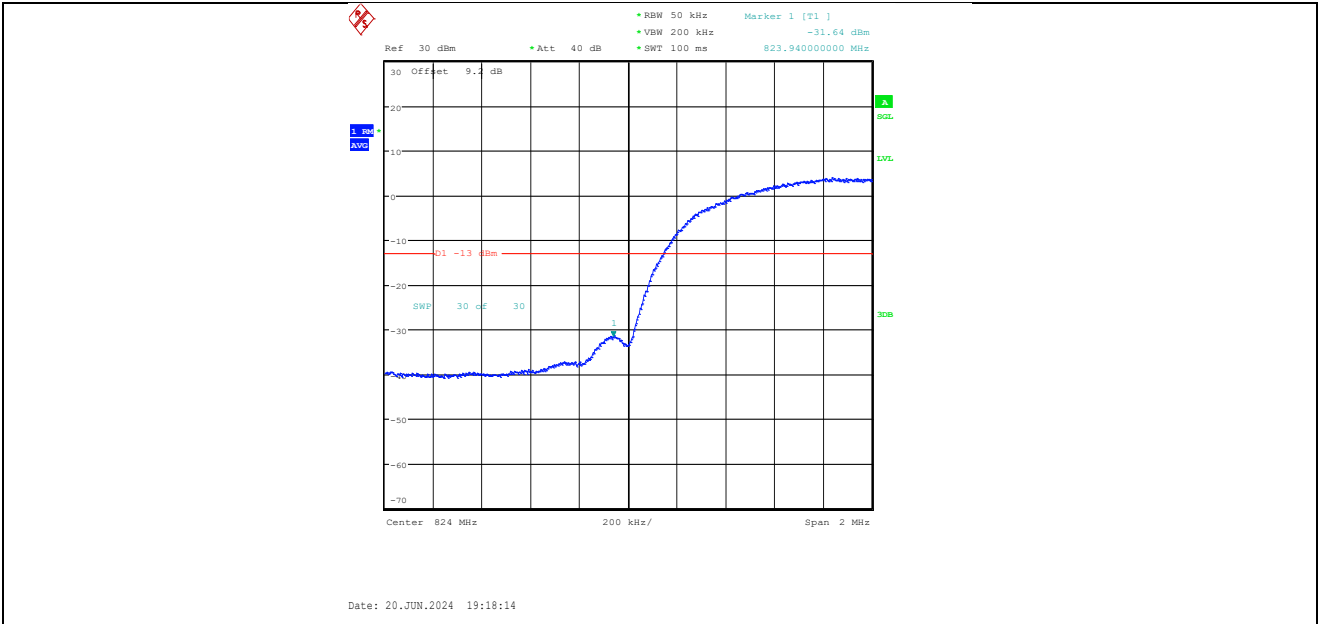
Band	Channel	SubTest	Frequency (MHz)	Result (dBm)	Limit(dBm)	Verdict
Band5	4132	1	823.94	-33.30	-13	PASS
Band5	4233	1	849.07	-34.60	-13	PASS
Band5	4132	2	824.00	-31.70	-13	PASS
Band5	4233	2	849.26	-34.11	-13	PASS
Band5	4132	3	823.93	-33.14	-13	PASS
Band5	4233	3	849.07	-34.84	-13	PASS
Band5	4132	4	823.94	-34.85	-13	PASS
Band5	4233	4	849.00	-36.93	-13	PASS
Band5	4132	5	823.93	-31.80	-13	PASS
Band5	4233	5	849.08	-34.07	-13	PASS



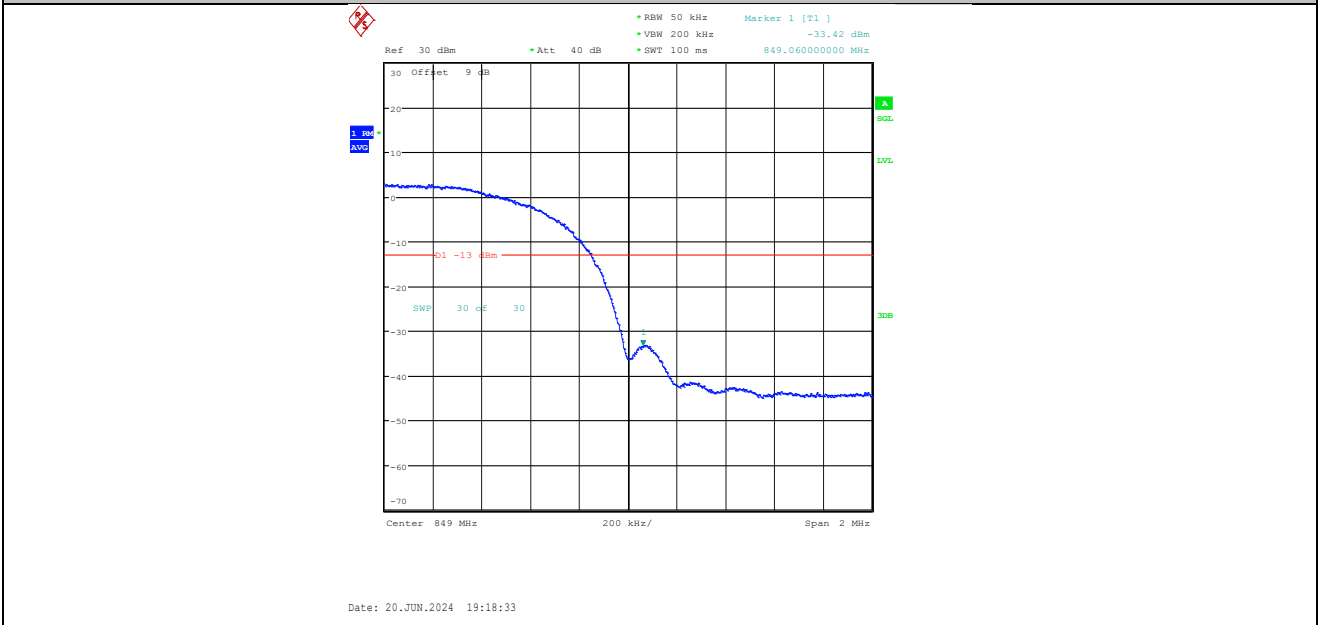
Band5-4132-PASS



Band5-4233-PASS



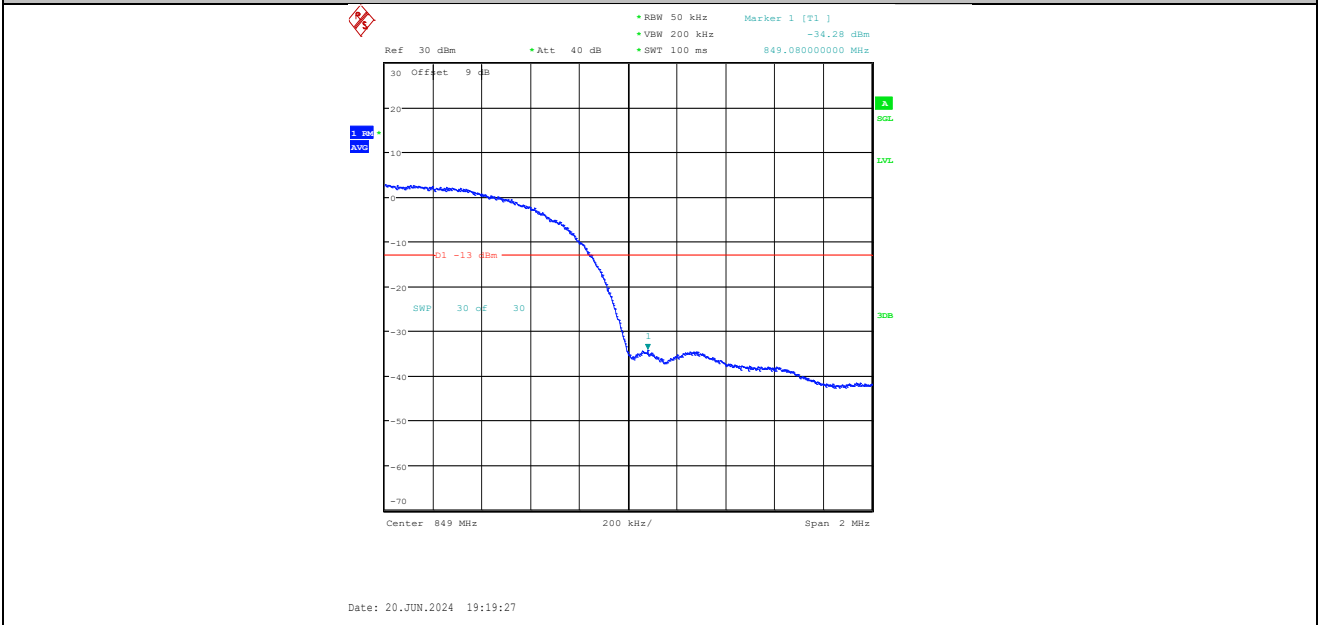
Band5-4132-1-PASS



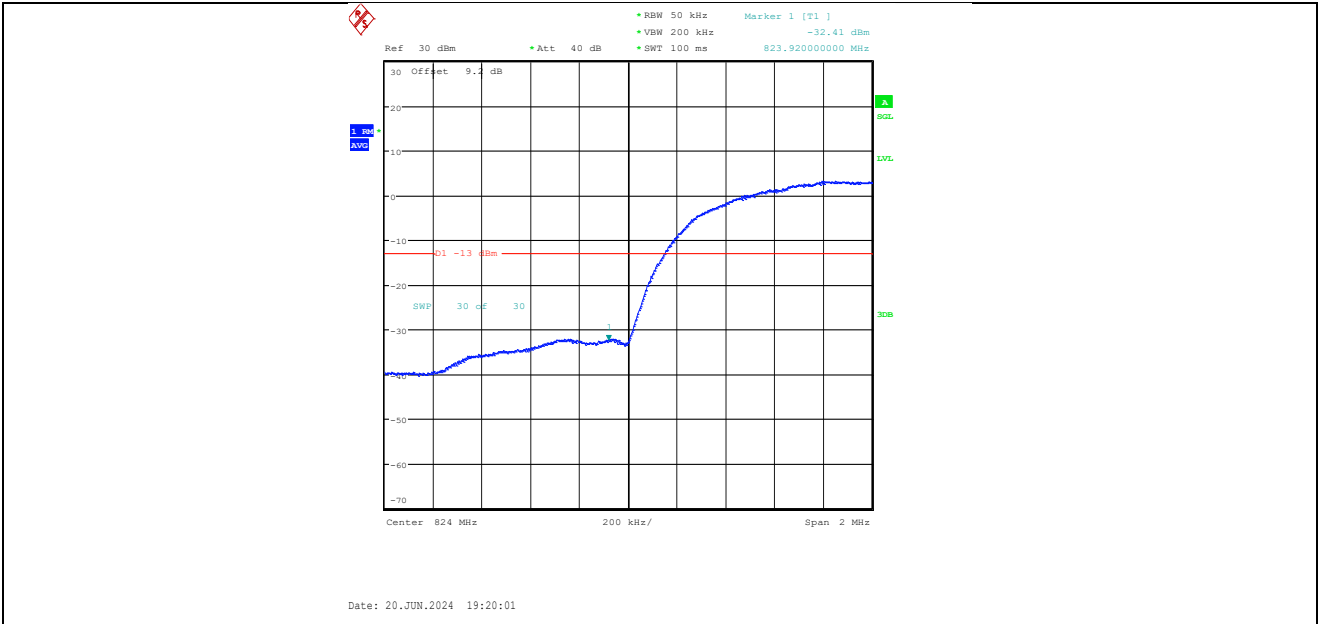
Band5-4233-1-PASS



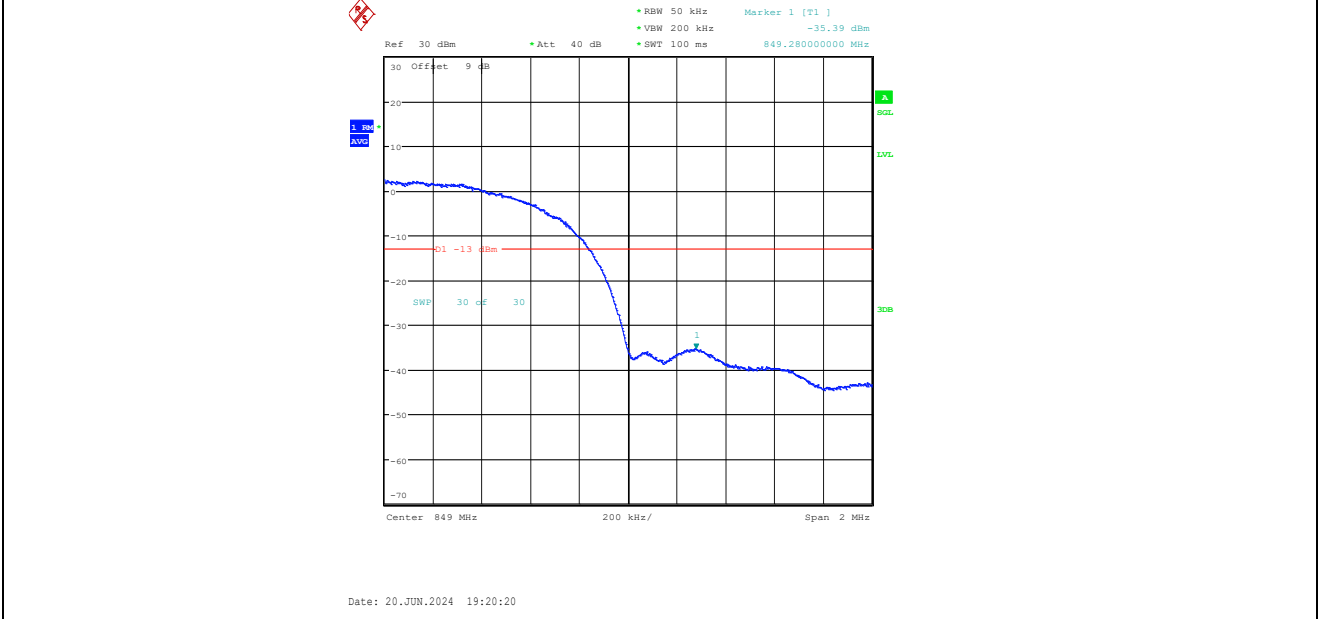
Band5-4132-2-PASS



Band5-4233-2-PASS



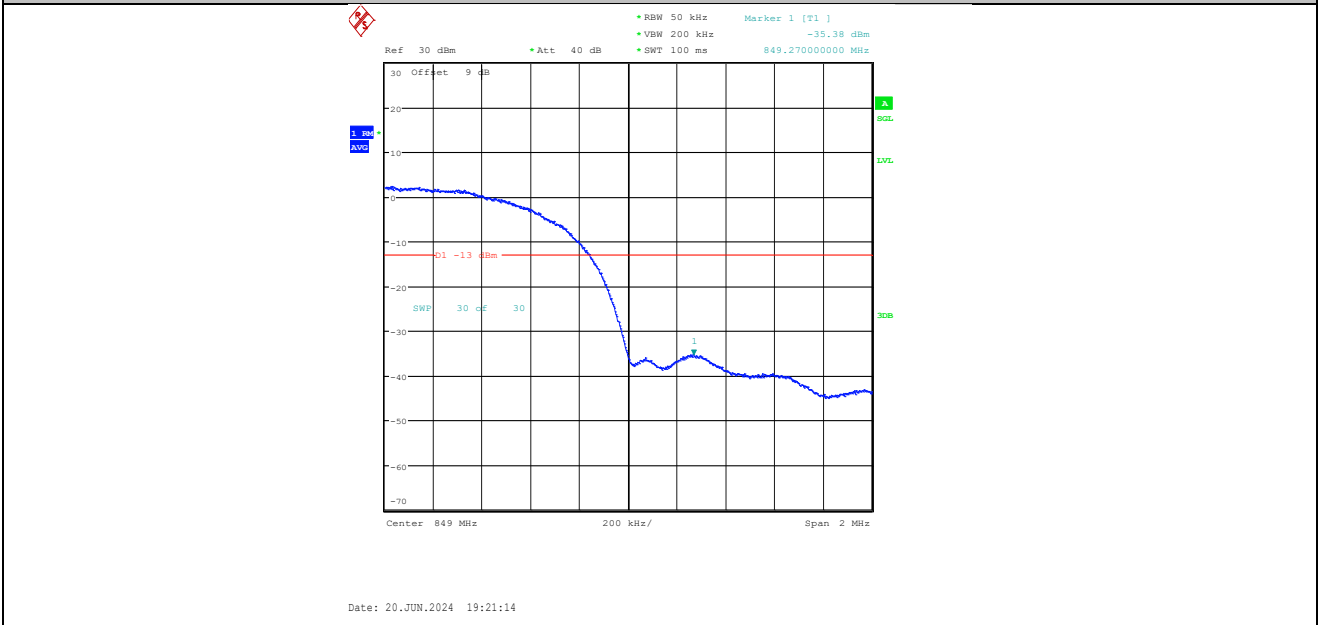
Band5-4132-3-PASS



Band5-4233-3-PASS



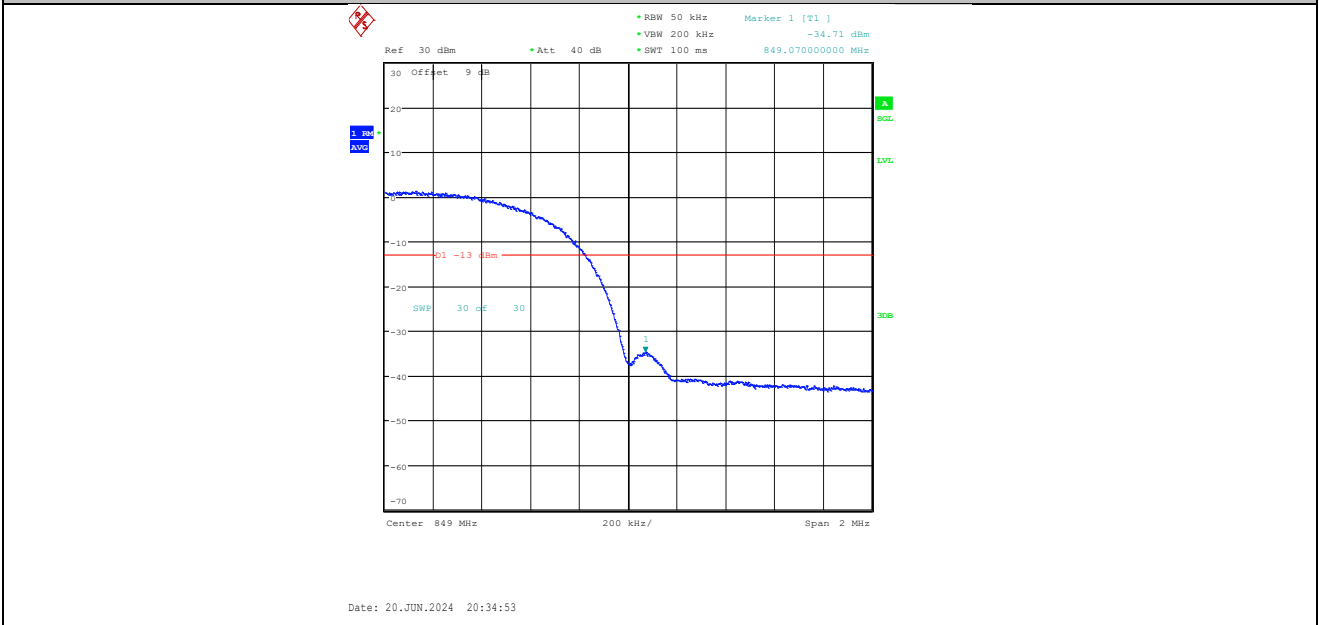
Band5-4132-4-PASS



Band5-4233-4-PASS



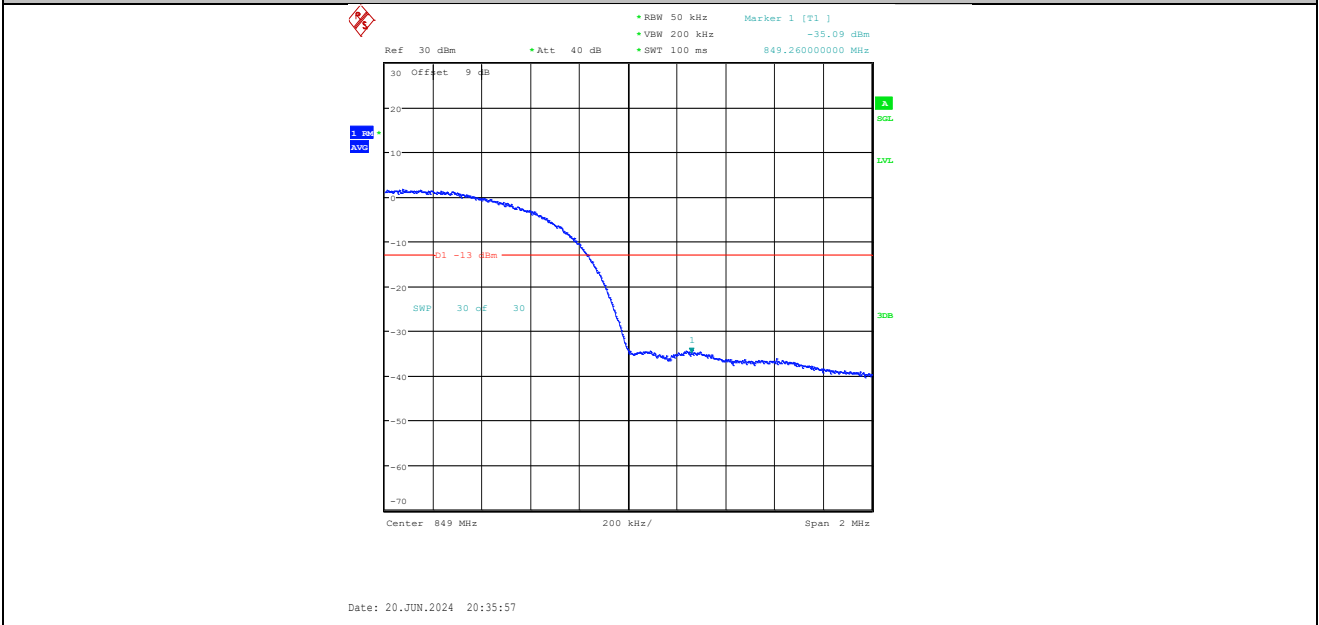
Band5-4132-1-PASS



Band5-4233-1-PASS



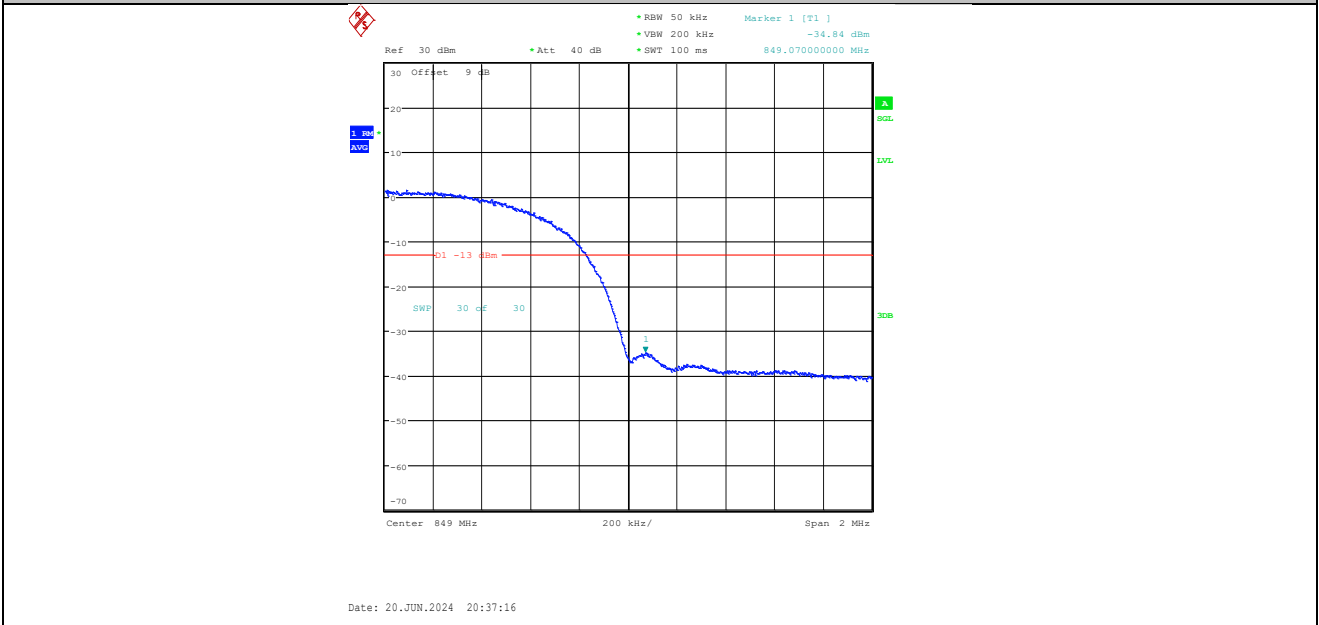
Band5-4132-2-PASS



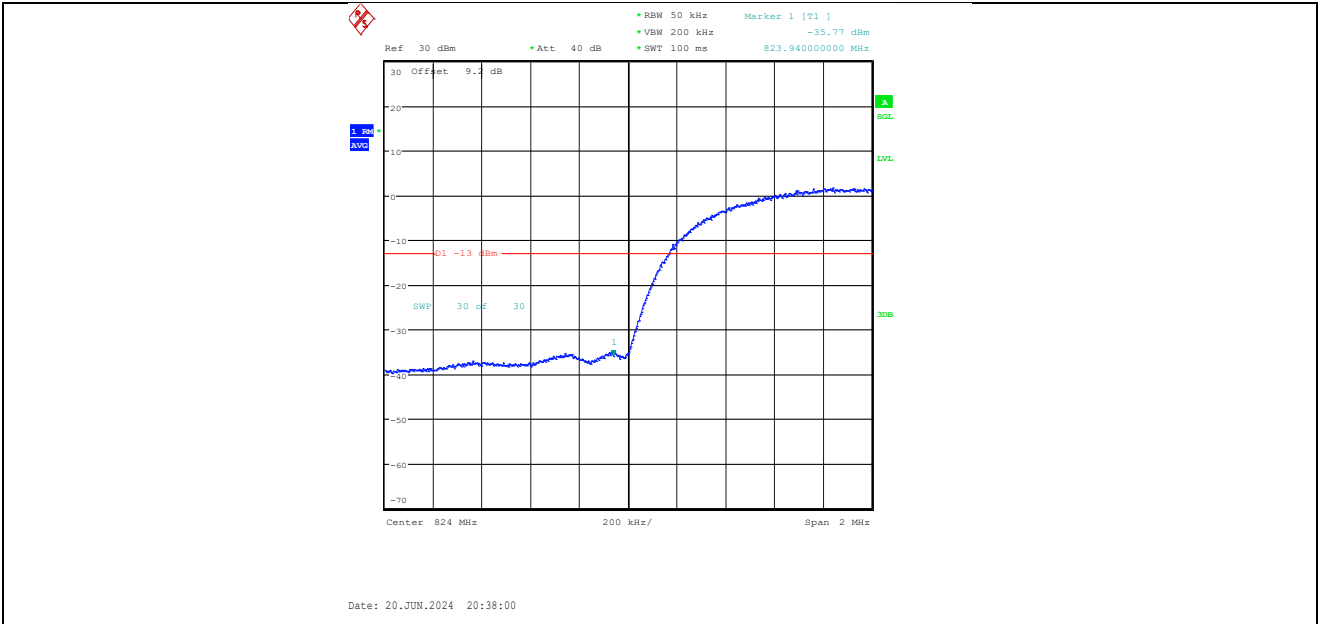
Band5-4233-2-PASS



Band5-4132-3-PASS



Band5-4233-3-PASS



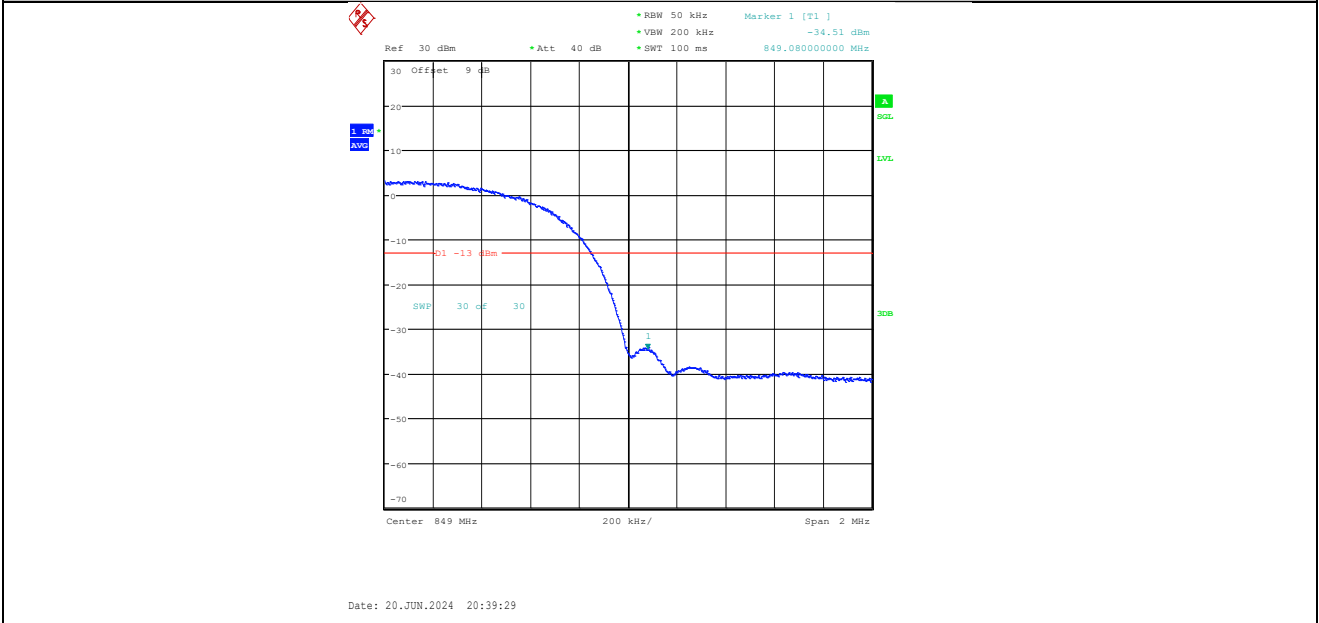
Band5-4132-4-PASS



Band5-4233-4-PASS



Band5-4132-5-PASS



Band5-4233-5-PASS

4.8 ERP, EIRP Measurement

Test Requirement:	FCC part22.913(a) and FCC part24.232(b), FCC part27.50(a)
Test Method:	FCC part2.1046
Limit:	GSM850, WCDMA Band V: 7W PCS1900, WCDMA Band II: 2W WCDMA Band IV: 1W
Test setup:	<p>Below 1GHz</p> <p>Above 1GHz</p> <p>Substituted method:</p>

<p>Test Procedure:</p>	<ol style="list-style-type: none"> 1. The EUT was placed on a non-conductive turntable using a non-conductive support. The radiated emission at the fundamental frequency was measured at 3 m with a test antenna and EMI spectrum analyzer. 2. During the measurement, the EUT was in communication with the station. The highest emission was recorded with the rotation of the turntable and the lowering of the test antenna from 4m to 1m. The reading was recorded and the field strength (E in dBuV/m) was calculated. 3. ERP in frequency band 824.2 –848.80.8MHz were measured using a substitution method. The EUT was replaced by a dipole antenna connected, the S.G. output was recorded and ERP was calculated as follows: $\text{ERP} = \text{S.G. output (dBm)} + \text{Antenna Gain (dBd)} - \text{Cable Loss (dB)}$ 4. EIRP in frequency band 1850.2 –1909.8MHz were measured using a substitution method. The EUT was replaced by a horn antenna connected, the S.G. output was recorded and EIRP was calculated as follows: $\text{EIRP} = \text{S.G. output (dBm)} + \text{Antenna Gain (dBi)} - \text{Cable Loss (dB)}$
<p>Test Instruments:</p>	<p>Refer to section 3 for details</p>
<p>Test mode:</p>	<p>Refer to section 4.1 for details</p>
<p>Test results:</p>	<p>Pass</p>

Measurement Data

EUT mode	Channel	EUT Pol.	Antenna Pol.	ERP(dBm)	Limit (dBm)	Result
GSM850 (GSM link)	Lowest	H	V	31.04	38.45	Pass
			H	32.62		
		E1	V	32.11		
			H	31.56		
		E2	V	32.62		
			H	31.54		
	Middle	H	V	31.00	38.45	Pass
			H	31.26		
		E1	V	30.54		
			H	31.13		
		E2	V	33.23		
			H	29.98		
	Highest	H	V	33.00	38.45	Pass
			H	32.59		
		E1	V	32.98		
			H	31.24		
		E2	V	32.59		
			H	30.11		

EUT mode	Channel	EUT Pol.	Antenna Pol.	ERP(dBm)	Limit (dBm)	Result
GSM850 (GPRS 1 link)	Lowest	H	V	33.24	38.45	Pass
			H	31.99		
		E1	V	31.11		
			H	30.17		
		E2	V	32.49		
			H	30.11		
	Middle	H	V	32.73	38.45	Pass
			H	32.42		
		E1	V	32.11		
			H	30.16		
		E2	V	32.23		
			H	30.12		
	Highest	H	V	30.24	38.45	Pass
			H	31.45		
		E1	V	32.54		
			H	31.00		
		E2	V	32.50		
			H	31.52		

EUT mode	Channel	EUT Pol.	Antenna Pol.	ERP(dBm)	Limit (dBm)	Result
GSM850 (EGPRS 1 link)	Lowest	H	V	32.57	38.45	Pass
			H	32.08		
		E1	V	33.38		
			H	30.13		
		E2	V	32.39		
			H	31.31		
	Middle	H	V	33.24	38.45	Pass
			H	32.10		
		E1	V	34.82		
			H	30.73		
		E2	V	32.72		
			H	32.07		
	Highest	H	V	33.40	38.45	Pass
			H	32.50		
		E1	V	31.98		
			H	30.40		
		E2	V	34.33		
			H	30.22		

EUT mode	Channel	EUT Pol.	Antenna Pol.	EIRP (dBm)	Limit (dBm)	Result
PCS1900 (GSM link)	Lowest	H	V	31.24	33.01	Pass
			H	29.59		
		E1	V	30.22		
			H	29.30		
		E2	V	30.74		
			H	30.32		
	Middle	H	V	32.00	33.01	Pass
			H	29.84		
		E1	V	31.02		
			H	30.24		
		E2	V	31.72		
			H	29.98		
	Highest	H	V	31.57	33.01	Pass
			H	29.66		
		E1	V	30.71		
			H	29.64		
		E2	V	31.23		
			H	30.71		

EUT mode	Channel	EUT Pol.	Antenna Pol.	EIRP (dBm)	Limit (dBm)	Result
PCS1900 (GPRS 1 link)	Lowest	H	V	32.40	33.01	Pass
			H	30.33		
		E1	V	29.98		
			H	29.41		
		E2	V	30.33		
			H	29.28		
	Middle	H	V	30.57	33.01	Pass
			H	29.84		
		E1	V	29.98		
			H	28.92		
		E2	V	31.39		
			H	28.22		
	Highest	H	V	31.51	33.01	Pass
			H	29.63		
		E1	V	30.11		
			H	29.84		
		E2	V	29.99		
			H	29.82		

EUT mode	Channel	EUT Pol.	Antenna Pol.	EIRP (dBm)	Limit (dBm)	Result
PCS1900 (EGPRS 1 link)	Lowest	H	V	30.27	33.01	Pass
			H	29.33		
		E1	V	28.29		
			H	28.04		
		E2	V	30.72		
			H	30.22		
	Middle	H	V	31.01	33.01	Pass
			H	29.66		
		E1	V	30.55		
			H	30.84		
		E2	V	29.84		
			H	28.09		
	Highest	H	V	30.84	33.01	Pass
			H	30.03		
		E1	V	29.93		
			H	28.31		
		E2	V	29.99		
			H	29.83		

EUT mode	Channel	EUT Pol.	Antenna Pol.	ERP(dBm)	Limit (dBm)	Result
WCDMA Band V	Lowest	H	V	31.24	38.45	Pass
			H	30.56		
		E1	V	31.05		
			H	29.97		
		E2	V	30.34		
			H	29.83		
	Middle	H	V	30.14	38.45	Pass
			H	28.83		
		E1	V	31.22		
			H	29.67		
		E2	V	32.03		
			H	28.82		
	Highest	H	V	31.84	38.45	Pass
			H	29.59		
		E1	V	31.98		
			H	30.00		
		E2	V	30.72		
			H	29.29		

EUT mode	Channel	EUT Pol.	Antenna Pol.	EIRP(dBm)	Limit (dBm)	Result
WCDMA Band II	Lowest	H	V	26.30	33.01	Pass
			H	25.06		
		E1	V	24.09		
			H	24.85		
		E2	V	24.71		
			H	25.28		
	Middle	H	V	23.40	33.01	Pass
			H	24.87		
		E1	V	23.98		
			H	25.73		
		E2	V	24.72		
			H	23.98		
	Highest	H	V	25.73	33.01	Pass
			H	24.99		
		E1	V	24.55		
			H	23.00		
		E2	V	24.10		
			H	25.71		

EUT mode	Channel	EUT Pol.	Antenna Pol.	EIRP(dBm)	Limit (dBm)	Result
WCDMA Band IV	Lowest	H	V	25.67	33.01	Pass
			H	24.10		
		E1	V	24.98		
			H	23.43		
		E2	V	26.10		
			H	24.11		
	Middle	H	V	26.73	33.01	Pass
			H	25.43		
		E1	V	26.55		
			H	24.00		
		E2	V	25.33		
			H	24.51		
	Highest	H	V	24.85	33.01	Pass
			H	24.11		
		E1	V	24.22		
			H	24.74		
		E2	V	23.99		
			H	23.83		

4.9 Field strength of spurious radiation measurement

Test Requirement:	FCC part22.917(a) and FCC part24.238(a), FCC part27.55(a)
Test Method:	FCC part2.1053
Limit:	-13dBm
Test setup:	<p>Below 1GHz</p> <p>Above 1GHz</p> <p>Substituted method:</p>

Test Procedure:	<ol style="list-style-type: none"> 1. The EUT was placed on an non-conductive turntable using a non-conductive support. The radiated emission at the fundamental frequency was measured at 3 m with a test antenna and EMI spectrum analyzer. 2. During the tests, the antenna height and the EUT azimuth were varied in order to identify the maximum level of emissions from the EUT. This maximization process was repeated with the EUT positioned in each of its three orthogonal orientations. 3. The frequency range up to tenth harmonic was investigated for each of three fundamental frequency (low, middle and high channels). Once spurious emission was identified, the power of the emission was determined using the substitution method. 4. The spurious emissions attenuation was calculated as the difference between radiated power at the fundamental frequency and the spurious emissions frequency. $\text{ERP / EIRP} = \text{S.G. output (dBm)} + \text{Antenna Gain(dB/dBi)} - \text{Cable Loss (dB)}$
Test Instruments:	Refer to section 3 for details
Test mode:	Refer to section 4.1 for details
Test results:	Pass

Measurement Data

Test mode:	GSM850		Test channel:	Lowest
Frequency (MHz)	Spurious Emission		Limit (dBm)	Result
	Polarization	Level (dBm)		
1660.37	Vertical	-32.54	-13.00	Pass
2502.87	V	-36.24		
3287.78	V	-37.58		
4162.74	V	-47.35		
4997.56	V	---		
1685.22	Horizontal	-40.37	-13.00	Pass
2448.67	H	-41.15		
3333.61	H	-45.61		
4156.70	H	-47.80		
4988.66	H	---		
Test mode:	GSM850		Test channel:	Middle
Frequency (MHz)	Spurious Emission		Limit (dBm)	Result
	Polarization	Level (dBm)		
1685.25	Vertical	-31.17	-13.00	Pass
2540.12	V	-35.97		
3336.66	V	-35.65		
4225.56	V	-45.22		
5070.64	V	---		
1694.26	Horizontal	-38.25	-13.00	Pass
2486.75	H	-41.59		
3392.23	H	-44.17		
4210.80	H	-42.09		
5060.63	H	---		
Test mode:	GSM850		Test channel:	Highest
Frequency (MHz)	Spurious Emission		Limit (dBm)	Result
	Polarization	Level (dBm)		
1709.98	Vertical	-35.97	-13.00	Pass
2577.87	V	-39.33		
3387.03	V	-35.25		
4284.26	V	-44.93		
5143.67	V	---		
1722.86	Horizontal	-38.78	-13.00	Pass
2523.64	H	-40.86		
3433.14	H	-44.17		
4279.80	H	-44.42		
5134.49	H	---		

Test mode:	PCS1900		Test channel:	Lowest
Frequency (MHz)	Spurious Emission		Limit (dBm)	Result
	Polarization	Level (dBm)		
3712.25	Vertical	-34.17	-13.00	Pass
5580.81	V	-38.74		
7390.77	V	-34.98		
9292.62	V	-44.93		
11151.67	V	---		
3736.35	Horizontal	-37.58	-13.00	Pass
5526.74	H	-40.86		
7436.98	H	-42.27		
9277.86	H	-44.46		
11142.36	H	---		
Test mode:	PCS1900		Test channel:	Middle
Frequency (MHz)	Spurious Emission		Limit (dBm)	Result
	Polarization	Level (dBm)		
376024.13	Vertical	-34.37	-13.00	Pass
5671.09	V	-39.24		
7511.22	V	-37.48		
9441.33	V	-46.66		
11330.37	V	---		
3796.86	Horizontal	-40.66	-13.00	Pass
5616.78	H	-42.02		
7556.45	H	-46.76		
9427.30	H	-44.67		
11321.47	H	---		
Test mode:	PCS1900		Test channel:	Highest
Frequency (MHz)	Spurious Emission		Limit (dBm)	Result
	Polarization	Level (dBm)		
3873.65	Vertical	-35.73	-13.00	Pass
5761.41	V	-36.64		
7676.26	V	-32.87		
9572.73	V	-45.55		
11475.97	V	---		
3874.73	Horizontal	-38.58	-13.00	Pass
5752.64	H	-40.99		
7664.74	H	-43.33		
9577.97	H	-45.20		
11474.87	H	---		

Test mode:	WCDMA Band V		Test channel:	Lowest
Frequency (MHz)	Spurious Emission		Limit (dBm)	Result
	Polarization	Level (dBm)		
1675.64	Vertical	-32.63	-13.00	Pass
2505.94	V	-36.97		
3316.06	V	-33.64		
4169.82	V	-44.96		
4998.97	V	---		
1668.70	Horizontal	-37.40	-13.00	Pass
2388.97	H	-41.05		
3371.98	H	-42.60		
4127.97	H	-41.47		
5016.86	H	---		
Test mode:	WCDMA Band V		Test channel:	Middle
Frequency (MHz)	Spurious Emission		Limit (dBm)	Result
	Polarization	Level (dBm)		
1665.64	Vertical	-32.73	-13.00	Pass
2543.07	V	-38.74		
3366.28	V	-33.65		
4216.81	V	-44.95		
5078.83	V	---		
1667.37	Horizontal	-35.25	-13.00	Pass
2487.01	H	-42.26		
3411.38	H	-41.87		
4127.76	H	-43.76		
5070.02	H	---		
Test mode:	WCDMA Band V		Test channel:	Highest
Frequency (MHz)	Spurious Emission		Limit (dBm)	Result
	Polarization	Level (dBm)		
1669.74	Vertical	-33.94	-13.00	Pass
2555.68	V	-38.73		
3366.26	V	-33.14		
4263.38	V	-45.55		
5130.71	V	---		
1711.73	Horizontal	-34.44	-13.00	Pass
2516.55	H	-41.26		
3418.44	H	-41.36		
4238.97	H	-41.87		
5121.47	H	---		

Test mode:	WCDMA Band II		Test channel:	Lowest
Frequency (MHz)	Spurious Emission		Limit (dBm)	Result
	Polarization	Level (dBm)		
3724.64	Vertical	-33.36	-13.00	Pass
5556.17	V	-35.94		
7403.40	V	-35.74		
9279.82	V	-45.33		
11178.97	V	---		
3771.73	Horizontal	-35.25	-13.00	Pass
5504.34	H	-40.99		
7446.38	H	-41.89		
9288.27	H	-41.77		
11169.47	H	---		
Test mode:	WCDMA Band II		Test channel:	Middle
Frequency (MHz)	Spurious Emission		Limit (dBm)	Result
	Polarization	Level (dBm)		
3738.25	Vertical	-32.24	-13.00	Pass
5659.17	V	-35.96		
7526.39	V	-31.40		
9442.33	V	-45.08		
11303.38	V	---		
3764.86	Horizontal	-38.25	-13.00	Pass
5611.55	H	-41.79		
7574.67	H	-44.49		
9454.06	H	-43.36		
11279.96	H	---		
Test mode:	WCDMA Band II		Test channel:	Highest
Frequency (MHz)	Spurious Emission		Limit (dBm)	Result
	Polarization	Level (dBm)		
3838.44	Vertical	-33.34	-13.00	Pass
5743.34	V	-34.33		
7619.10	V	-33.65		
9569.22	V	-45.09		
11481.88	V	---		
3864.86	Horizontal	-37.85	-13.00	Pass
5698.25	H	-40.99		
7718.25	H	-44.07		
9539.19	H	-44.63		
11483.60	H	---		

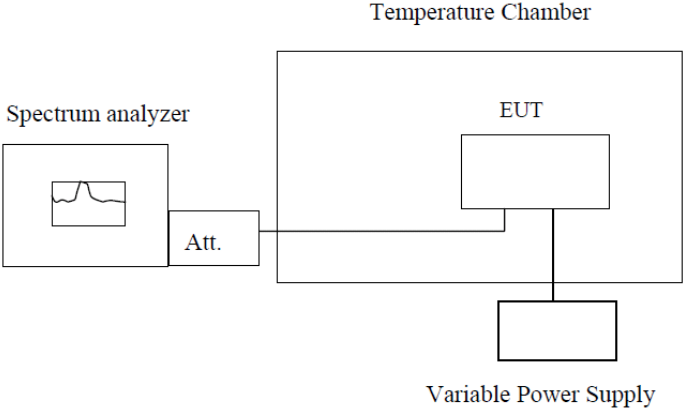
Test mode:	WCDMA Band IV		Test channel:	Lowest
Frequency (MHz)	Spurious Emission		Limit (dBm)	Result
	Polarization	Level (dBm)		
3524.98	Vertical	-32.75	-13.00	Pass
5159.07	V	-37.64		
10227.16	V	-33.14		
15500.52	V	-45.46		
3135.98	V	---		
4092.57	Horizontal	-37.34	-13.00	Pass
5607.95	H	-40.86		
10271.40	H	-43.60		
15489.98	H	-44.20		
30886.66	H	---		
Test mode:	WCDMA Band IV		Test channel:	Middle
Frequency (MHz)	Spurious Emission		Limit (dBm)	Result
	Polarization	Level (dBm)		
3492.76	Vertical	-32.65	-13.00	Pass
5250.77	V	-36.13		
10431.48	V	-32.87		
15701.48	V	-45.32		
31370.48	V	---		
3516.40	Horizontal	-37.69	-13.00	Pass
5196.55	H	-40.35		
10476.96	H	-40.49		
15686.92	H	-39.36		
31361.47	H	---		
Test mode:	WCDMA Band IV		Test channel:	Highest
Frequency (MHz)	Spurious Emission		Limit (dBm)	Result
	Polarization	Level (dBm)		
3515.65	Vertical	-35.73	-13.00	Pass
5275.87	V	-36.40		
10515.77	V	-33.25		
15772.46	V	-44.82		
31588.66	V	---		
3538.86	Horizontal	-37.34	-13.00	Pass
5232.64	H	-41.82		
10546.41	H	-43.87		
15755.57	H	-41.76		
31544.47	H	---		

Remark:

1. The emission behaviour belongs to narrowband spurious emission.

2. Remark"---" means that the emission level is too low to be measured
3. The emission levels of below 1 GHz are very lower than the limit and not show in test report.

4.10 Frequency stability V.S. Temperature measurement

Test Requirement:	FCC Part2.1055(a)(1)(b)
Test Method:	FCC Part2.1055(a)(1)(b)
Limit:	2.5ppm
Test setup:	 <p style="text-align: center;">Note : Measurement setup for testing on Antenna connector</p>
Test procedure:	<ol style="list-style-type: none"> 1. The equipment under test was connected to an external DC power supply and input rated voltage. 2. RF output was connected to a frequency counter or spectrum analyzer via feed through attenuators. 3. The EUT was placed inside the temperature chamber. 4. Set the spectrum analyzer RBW low enough to obtain the desired frequency resolution and measure EUT 25°C operating frequency as reference frequency. 5. Turn EUT off and set the chamber temperature to –20°C. After the temperature stabilized for approximately 30 minutes recorded the frequency. 6. Repeat step measure with 10°C increased per stage until the highest temperature of +50°C reached.
Test Instruments:	Refer to section 3 for details
Test mode:	Refer to section 4.1 for details
Test results:	Pass

Measurement Data

Voltage								
Band	Channel	P C L	Voltage [Vdc]	Temperature (°C)	Deviation (Hz)	Deviation (ppm)	Limit (ppm)	Verdict
GSM850	128	5	VL	NT	4.68	0.005678	±2.5	PASS
GSM850	128	5	VN	NT	-2.10	-0.002548	±2.5	PASS
GSM850	128	5	VH	NT	-2.87	-0.003482	±2.5	PASS
GSM850	190	5	VL	NT	-2.16	-0.002582	±2.5	PASS
GSM850	190	5	VN	NT	-4.00	-0.004781	±2.5	PASS
GSM850	190	5	VH	NT	-3.45	-0.004124	±2.5	PASS
GSM850	251	5	VL	NT	-5.62	-0.006621	±2.5	PASS
GSM850	251	5	VN	NT	-3.58	-0.004218	±2.5	PASS
GSM850	251	5	VH	NT	-3.03	-0.003570	±2.5	PASS
GPRS850	128	5	VL	NT	14.21	0.017241	±2.5	PASS
GPRS850	128	5	VN	NT	17.69	0.021463	±2.5	PASS
GPRS850	128	5	VH	NT	20.50	0.024873	±2.5	PASS
GPRS850	190	5	VL	NT	13.20	0.015778	±2.5	PASS
GPRS850	190	5	VN	NT	17.21	0.020571	±2.5	PASS
GPRS850	190	5	VH	NT	14.92	0.017834	±2.5	PASS
GPRS850	251	5	VL	NT	16.50	0.019439	±2.5	PASS
GPRS850	251	5	VN	NT	19.98	0.023539	±2.5	PASS
GPRS850	251	5	VH	NT	14.27	0.016812	±2.5	PASS
EGPRS850	128	8	VL	NT	17.72	0.021500	±2.5	PASS
EGPRS850	128	8	VN	NT	14.92	0.018102	±2.5	PASS
EGPRS850	128	8	VH	NT	16.11	0.019546	±2.5	PASS
EGPRS850	190	8	VL	NT	17.79	0.021265	±2.5	PASS
EGPRS850	190	8	VN	NT	15.11	0.018061	±2.5	PASS
EGPRS850	190	8	VH	NT	17.63	0.021073	±2.5	PASS
EGPRS850	251	8	VL	NT	16.21	0.019098	±2.5	PASS
EGPRS850	251	8	VN	NT	14.21	0.016741	±2.5	PASS
EGPRS850	251	8	VH	NT	10.85	0.012783	±2.5	PASS
GSM1900	512	0	VL	NT	9.20	0.004972	±2.5	PASS
GSM1900	512	0	VN	NT	16.92	0.009145	±2.5	PASS
GSM1900	512	0	VH	NT	13.40	0.007242	±2.5	PASS
GSM1900	661	0	VL	NT	-2.20	-0.001170	±2.5	PASS
GSM1900	661	0	VN	NT	-3.39	-0.001803	±2.5	PASS
GSM1900	661	0	VH	NT	2.00	0.001064	±2.5	PASS
GSM1900	810	0	VL	NT	6.01	0.003147	±2.5	PASS

GSM1900	810	0	VN	NT	2.81	0.001471	±2.5	PASS
GSM1900	810	0	VH	NT	8.68	0.004545	±2.5	PASS
GPRS1900	512	0	VL	NT	16.11	0.008707	±2.5	PASS
GPRS1900	512	0	VN	NT	9.62	0.005199	±2.5	PASS
GPRS1900	512	0	VH	NT	17.76	0.009599	±2.5	PASS
GPRS1900	661	0	VL	NT	6.75	0.003590	±2.5	PASS
GPRS1900	661	0	VN	NT	7.33	0.003899	±2.5	PASS
GPRS1900	661	0	VH	NT	9.17	0.004878	±2.5	PASS
GPRS1900	810	0	VL	NT	16.14	0.008451	±2.5	PASS
GPRS1900	810	0	VN	NT	12.11	0.006341	±2.5	PASS
GPRS1900	810	0	VH	NT	14.92	0.007812	±2.5	PASS
EGPRS1900	512	2	VL	NT	13.79	0.007453	±2.5	PASS
EGPRS1900	512	2	VN	NT	20.70	0.011188	±2.5	PASS
EGPRS1900	512	2	VH	NT	21.18	0.011447	±2.5	PASS
EGPRS1900	661	2	VL	NT	15.53	0.008261	±2.5	PASS
EGPRS1900	661	2	VN	NT	12.24	0.006511	±2.5	PASS
EGPRS1900	661	2	VH	NT	22.18	0.011798	±2.5	PASS
EGPRS1900	810	2	VL	NT	24.89	0.013033	±2.5	PASS
EGPRS1900	810	2	VN	NT	24.44	0.012797	±2.5	PASS
EGPRS1900	810	2	VH	NT	9.59	0.005021	±2.5	PASS

Temperature								
Band	Channel	PCL	Voltage [Vdc]	Temperature (°C)	Deviation (Hz)	Deviation (ppm)	Limit (ppm)	Verdict
GSM850	128	5	NV	-30	-6.39	-0.007753	±2.5	PASS
GSM850	128	5	NV	-20	-4.23	-0.005132	±2.5	PASS
GSM850	128	5	NV	-10	-5.88	-0.007134	±2.5	PASS
GSM850	128	5	NV	0	2.42	0.002936	±2.5	PASS
GSM850	128	5	NV	10	-0.61	-0.000740	±2.5	PASS
GSM850	128	5	NV	20	-2.62	-0.003179	±2.5	PASS
GSM850	128	5	NV	30	-6.59	-0.007996	±2.5	PASS
GSM850	128	5	NV	40	-8.07	-0.009791	±2.5	PASS
GSM850	128	5	NV	50	2.32	0.002815	±2.5	PASS
GSM850	190	5	NV	-30	-5.84	-0.006981	±2.5	PASS
GSM850	190	5	NV	-20	1.07	0.001279	±2.5	PASS
GSM850	190	5	NV	-10	1.36	0.001626	±2.5	PASS
GSM850	190	5	NV	0	-2.20	-0.002630	±2.5	PASS

GSM850	190	5	NV	10	3.97	0.004745	±2.5	PASS
GSM850	190	5	NV	20	-3.39	-0.004052	±2.5	PASS
GSM850	190	5	NV	30	3.36	0.004016	±2.5	PASS
GSM850	190	5	NV	40	-7.17	-0.008570	±2.5	PASS
GSM850	190	5	NV	50	-0.58	-0.000693	±2.5	PASS
GSM850	251	5	NV	-30	1.32	0.001555	±2.5	PASS
GSM850	251	5	NV	-20	-3.68	-0.004336	±2.5	PASS
GSM850	251	5	NV	-10	-1.90	-0.002238	±2.5	PASS
GSM850	251	5	NV	0	1.29	0.001520	±2.5	PASS
GSM850	251	5	NV	10	-0.58	-0.000683	±2.5	PASS
GSM850	251	5	NV	20	-2.26	-0.002663	±2.5	PASS
GSM850	251	5	NV	30	2.13	0.002509	±2.5	PASS
GSM850	251	5	NV	40	-1.87	-0.002203	±2.5	PASS
GSM850	251	5	NV	50	-4.13	-0.004866	±2.5	PASS
GPRS850	128	5	NV	-30	16.21	0.019668	±2.5	PASS
GPRS850	128	5	NV	-20	15.50	0.018806	±2.5	PASS
GPRS850	128	5	NV	-10	12.69	0.015397	±2.5	PASS
GPRS850	128	5	NV	0	13.20	0.016016	±2.5	PASS
GPRS850	128	5	NV	10	14.59	0.017702	±2.5	PASS
GPRS850	128	5	NV	20	14.82	0.017981	±2.5	PASS
GPRS850	128	5	NV	30	14.53	0.017629	±2.5	PASS
GPRS850	128	5	NV	40	11.20	0.013589	±2.5	PASS
GPRS850	128	5	NV	50	14.53	0.017629	±2.5	PASS
GPRS850	190	5	NV	-30	14.92	0.017834	±2.5	PASS
GPRS850	190	5	NV	-20	11.53	0.013782	±2.5	PASS
GPRS850	190	5	NV	-10	17.95	0.021456	±2.5	PASS
GPRS850	190	5	NV	0	19.08	0.022807	±2.5	PASS
GPRS850	190	5	NV	10	16.11	0.019257	±2.5	PASS
GPRS850	190	5	NV	20	17.56	0.020990	±2.5	PASS
GPRS850	190	5	NV	30	15.66	0.018719	±2.5	PASS
GPRS850	190	5	NV	40	18.44	0.022042	±2.5	PASS
GPRS850	190	5	NV	50	14.82	0.017715	±2.5	PASS
GPRS850	251	5	NV	-30	17.69	0.020841	±2.5	PASS
GPRS850	251	5	NV	-20	15.66	0.018450	±2.5	PASS
GPRS850	251	5	NV	-10	12.72	0.014986	±2.5	PASS
GPRS850	251	5	NV	0	16.59	0.019545	±2.5	PASS
GPRS850	251	5	NV	10	15.79	0.018603	±2.5	PASS

GPRS850	251	5	NV	20	19.37	0.022820	±2.5	PASS
GPRS850	251	5	NV	30	17.98	0.021183	±2.5	PASS
GPRS850	251	5	NV	40	16.95	0.019969	±2.5	PASS
GPRS850	251	5	NV	50	17.37	0.020464	±2.5	PASS
EGPRS850	128	8	NV	-30	19.53	0.023696	±2.5	PASS
EGPRS850	128	8	NV	-20	17.05	0.020687	±2.5	PASS
EGPRS850	128	8	NV	-10	16.34	0.019825	±2.5	PASS
EGPRS850	128	8	NV	0	17.92	0.021742	±2.5	PASS
EGPRS850	128	8	NV	10	15.79	0.019158	±2.5	PASS
EGPRS850	128	8	NV	20	14.56	0.017666	±2.5	PASS
EGPRS850	128	8	NV	30	16.85	0.020444	±2.5	PASS
EGPRS850	128	8	NV	40	17.27	0.020954	±2.5	PASS
EGPRS850	128	8	NV	50	20.99	0.025467	±2.5	PASS
EGPRS850	190	8	NV	-30	19.44	0.023237	±2.5	PASS
EGPRS850	190	8	NV	-20	15.11	0.018061	±2.5	PASS
EGPRS850	190	8	NV	-10	19.34	0.023117	±2.5	PASS
EGPRS850	190	8	NV	0	5.23	0.006251	±2.5	PASS
EGPRS850	190	8	NV	10	18.27	0.021838	±2.5	PASS
EGPRS850	190	8	NV	20	10.23	0.012228	±2.5	PASS
EGPRS850	190	8	NV	30	16.27	0.019448	±2.5	PASS
EGPRS850	190	8	NV	40	14.14	0.016902	±2.5	PASS
EGPRS850	190	8	NV	50	19.89	0.023775	±2.5	PASS
EGPRS850	251	8	NV	-30	14.43	0.017000	±2.5	PASS
EGPRS850	251	8	NV	-20	12.88	0.015174	±2.5	PASS
EGPRS850	251	8	NV	-10	11.49	0.013537	±2.5	PASS
EGPRS850	251	8	NV	0	10.27	0.012099	±2.5	PASS
EGPRS850	251	8	NV	10	10.33	0.012170	±2.5	PASS
EGPRS850	251	8	NV	20	10.88	0.012818	±2.5	PASS
EGPRS850	251	8	NV	30	10.01	0.011793	±2.5	PASS
EGPRS850	251	8	NV	40	13.27	0.015634	±2.5	PASS
EGPRS850	251	8	NV	50	14.17	0.016694	±2.5	PASS
GSM1900	512	0	NV	-30	11.66	0.006302	±2.5	PASS
GSM1900	512	0	NV	-20	8.27	0.004470	±2.5	PASS
GSM1900	512	0	NV	-10	11.17	0.006037	±2.5	PASS
GSM1900	512	0	NV	0	9.98	0.005394	±2.5	PASS
GSM1900	512	0	NV	10	15.59	0.008426	±2.5	PASS
GSM1900	512	0	NV	20	16.14	0.008723	±2.5	PASS

GSM1900	512	0	NV	30	12.49	0.006751	±2.5	PASS
GSM1900	512	0	NV	40	12.46	0.006734	±2.5	PASS
GSM1900	512	0	NV	50	13.92	0.007524	±2.5	PASS
GSM1900	661	0	NV	-30	-9.33	-0.004963	±2.5	PASS
GSM1900	661	0	NV	-20	0.16	0.000085	±2.5	PASS
GSM1900	661	0	NV	-10	-9.43	-0.005016	±2.5	PASS
GSM1900	661	0	NV	0	1.45	0.000771	±2.5	PASS
GSM1900	661	0	NV	10	-4.07	-0.002165	±2.5	PASS
GSM1900	661	0	NV	20	-0.90	-0.000479	±2.5	PASS
GSM1900	661	0	NV	30	-4.42	-0.002351	±2.5	PASS
GSM1900	661	0	NV	40	-3.91	-0.002080	±2.5	PASS
GSM1900	661	0	NV	50	12.69	0.006750	±2.5	PASS
GSM1900	810	0	NV	-30	16.08	0.008420	±2.5	PASS
GSM1900	810	0	NV	-20	11.14	0.005833	±2.5	PASS
GSM1900	810	0	NV	-10	15.11	0.007912	±2.5	PASS
GSM1900	810	0	NV	0	10.11	0.005294	±2.5	PASS
GSM1900	810	0	NV	10	12.11	0.006341	±2.5	PASS
GSM1900	810	0	NV	20	19.15	0.010027	±2.5	PASS
GSM1900	810	0	NV	30	25.05	0.013117	±2.5	PASS
GSM1900	810	0	NV	40	12.59	0.006592	±2.5	PASS
GSM1900	810	0	NV	50	10.72	0.005613	±2.5	PASS
GPRS1900	512	0	NV	-30	16.72	0.009037	±2.5	PASS
GPRS1900	512	0	NV	-20	14.50	0.007837	±2.5	PASS
GPRS1900	512	0	NV	-10	12.72	0.006875	±2.5	PASS
GPRS1900	512	0	NV	0	18.50	0.009999	±2.5	PASS
GPRS1900	512	0	NV	10	16.89	0.009129	±2.5	PASS
GPRS1900	512	0	NV	20	11.91	0.006437	±2.5	PASS
GPRS1900	512	0	NV	30	10.40	0.005621	±2.5	PASS
GPRS1900	512	0	NV	40	17.50	0.009458	±2.5	PASS
GPRS1900	512	0	NV	50	9.01	0.004870	±2.5	PASS
GPRS1900	661	0	NV	-30	14.08	0.007489	±2.5	PASS
GPRS1900	661	0	NV	-20	14.14	0.007521	±2.5	PASS
GPRS1900	661	0	NV	-10	20.18	0.010734	±2.5	PASS
GPRS1900	661	0	NV	0	18.14	0.009649	±2.5	PASS
GPRS1900	661	0	NV	10	16.89	0.008984	±2.5	PASS
GPRS1900	661	0	NV	20	16.30	0.008670	±2.5	PASS
GPRS1900	661	0	NV	30	6.81	0.003622	±2.5	PASS

GPRS1900	661	0	NV	40	8.46	0.004500	±2.5	PASS
GPRS1900	661	0	NV	50	8.72	0.004638	±2.5	PASS
GPRS1900	810	0	NV	-30	14.27	0.007472	±2.5	PASS
GPRS1900	810	0	NV	-20	20.11	0.010530	±2.5	PASS
GPRS1900	810	0	NV	-10	13.92	0.007289	±2.5	PASS
GPRS1900	810	0	NV	0	22.60	0.011834	±2.5	PASS
GPRS1900	810	0	NV	10	23.44	0.012274	±2.5	PASS
GPRS1900	810	0	NV	20	21.73	0.011378	±2.5	PASS
GPRS1900	810	0	NV	30	24.60	0.012881	±2.5	PASS
GPRS1900	810	0	NV	40	17.53	0.009179	±2.5	PASS
GPRS1900	810	0	NV	50	6.10	0.003194	±2.5	PASS
EGPRS1900	512	2	NV	-30	12.20	0.006594	±2.5	PASS
EGPRS1900	512	2	NV	-20	11.24	0.006075	±2.5	PASS
EGPRS1900	512	2	NV	-10	15.50	0.008377	±2.5	PASS
EGPRS1900	512	2	NV	0	22.18	0.011988	±2.5	PASS
EGPRS1900	512	2	NV	10	27.12	0.014658	±2.5	PASS
EGPRS1900	512	2	NV	20	25.38	0.013717	±2.5	PASS
EGPRS1900	512	2	NV	30	14.95	0.008080	±2.5	PASS
EGPRS1900	512	2	NV	40	19.66	0.010626	±2.5	PASS
EGPRS1900	512	2	NV	50	20.15	0.010891	±2.5	PASS
EGPRS1900	661	2	NV	-30	18.66	0.009926	±2.5	PASS
EGPRS1900	661	2	NV	-20	12.56	0.006681	±2.5	PASS
EGPRS1900	661	2	NV	-10	21.66	0.011521	±2.5	PASS
EGPRS1900	661	2	NV	0	10.30	0.005479	±2.5	PASS
EGPRS1900	661	2	NV	10	14.98	0.007968	±2.5	PASS
EGPRS1900	661	2	NV	20	13.17	0.007005	±2.5	PASS
EGPRS1900	661	2	NV	30	9.78	0.005202	±2.5	PASS
EGPRS1900	661	2	NV	40	17.60	0.009362	±2.5	PASS
EGPRS1900	661	2	NV	50	17.31	0.009207	±2.5	PASS
EGPRS1900	810	2	NV	-30	8.72	0.004566	±2.5	PASS
EGPRS1900	810	2	NV	-20	15.79	0.008268	±2.5	PASS
EGPRS1900	810	2	NV	-10	9.07	0.004749	±2.5	PASS
EGPRS1900	810	2	NV	0	16.53	0.008655	±2.5	PASS
EGPRS1900	810	2	NV	10	19.95	0.010446	±2.5	PASS
EGPRS1900	810	2	NV	20	14.08	0.007372	±2.5	PASS
EGPRS1900	810	2	NV	30	15.98	0.008367	±2.5	PASS
EGPRS1900	810	2	NV	40	13.11	0.006865	±2.5	PASS

EGPRS1900	810	2	NV	50	11.14	0.005833	±2.5	PASS
-----------	-----	---	----	----	-------	----------	------	------

Voltage							
Band	Channel	Voltage (Vdc)	Temperature (°C)	Deviation (Hz)	Deviation (ppm)	Limit (ppm)	Verdict
Band2	9262	VL	NT	-4.56	-0.002462	±2.5	PASS
Band2	9262	VN	NT	-0.73	-0.000394	±2.5	PASS
Band2	9262	VH	NT	-4.55	-0.002456	±2.5	PASS
Band2	9400	VL	NT	7.30	0.003883	±2.5	PASS
Band2	9400	VN	NT	5.36	0.002851	±2.5	PASS
Band2	9400	VH	NT	-4.22	-0.002245	±2.5	PASS
Band2	9538	VL	NT	-0.48	-0.000252	±2.5	PASS
Band2	9538	VN	NT	-0.74	-0.000388	±2.5	PASS
Band2	9538	VH	NT	-0.57	-0.000299	±2.5	PASS

Temperature							
Band	Channel	Voltage (Vdc)	Temperature (°C)	Deviation (Hz)	Deviation (ppm)	Limit (ppm)	Verdict
Band2	9262	NV	-30	-2.26	-0.001220	±2.5	PASS
Band2	9262	NV	-20	-3.60	-0.001943	±2.5	PASS
Band2	9262	NV	0	-0.45	-0.000243	±2.5	PASS
Band2	9262	NV	10	-2.40	-0.001296	±2.5	PASS
Band2	9262	NV	20	-10.91	-0.005890	±2.5	PASS
Band2	9400	NV	-30	-3.77	-0.002005	±2.5	PASS
Band2	9400	NV	-20	1.17	0.000622	±2.5	PASS
Band2	9400	NV	0	-0.99	-0.000527	±2.5	PASS
Band2	9400	NV	10	-2.60	-0.001383	±2.5	PASS
Band2	9400	NV	20	-4.71	-0.002505	±2.5	PASS
Band2	9538	NV	-30	1.00	0.000524	±2.5	PASS
Band2	9538	NV	-20	-1.87	-0.000980	±2.5	PASS
Band2	9538	NV	0	-4.03	-0.002113	±2.5	PASS
Band2	9538	NV	10	-7.09	-0.003717	±2.5	PASS
Band2	9538	NV	20	7.09	0.003717	±2.5	PASS

Voltage								
Band	Channel	Sub Test	Voltage (Vdc)	Temperature (°C)	Deviation (Hz)	Deviation (ppm)	Limit (ppm)	Verdict
Band2	9262	1	VL	NT	-4.34	-0.002343	±2.5	PASS
Band2	9262	1	VN	NT	-3.55	-0.001916	±2.5	PASS
Band2	9262	1	VH	NT	6.59	0.003558	±2.5	PASS
Band2	9262	2	VL	NT	4.66	0.002516	±2.5	PASS
Band2	9262	2	VN	NT	1.82	0.000983	±2.5	PASS
Band2	9262	2	VH	NT	-4.81	-0.002597	±2.5	PASS
Band2	9262	3	VL	NT	3.81	0.002057	±2.5	PASS
Band2	9262	3	VN	NT	0.51	0.000275	±2.5	PASS
Band2	9262	3	VH	NT	0.39	0.000211	±2.5	PASS
Band2	9262	4	VL	NT	0.33	0.000178	±2.5	PASS
Band2	9262	4	VN	NT	0.35	0.000189	±2.5	PASS
Band2	9262	4	VH	NT	-0.84	-0.000453	±2.5	PASS
Band2	9400	1	VL	NT	0.84	0.000447	±2.5	PASS
Band2	9400	1	VN	NT	-0.04	-0.000021	±2.5	PASS
Band2	9400	1	VH	NT	2.34	0.001245	±2.5	PASS
Band2	9400	2	VL	NT	4.29	0.002282	±2.5	PASS
Band2	9400	2	VN	NT	3.76	0.002000	±2.5	PASS
Band2	9400	2	VH	NT	0.81	0.000431	±2.5	PASS
Band2	9400	3	VL	NT	1.37	0.000729	±2.5	PASS
Band2	9400	3	VN	NT	5.34	0.002840	±2.5	PASS
Band2	9400	3	VH	NT	-8.66	-0.004606	±2.5	PASS
Band2	9400	4	VL	NT	6.01	0.003197	±2.5	PASS
Band2	9400	4	VN	NT	8.30	0.004415	±2.5	PASS
Band2	9400	4	VH	NT	6.52	0.003468	±2.5	PASS
Band2	9538	1	VL	NT	-2.14	-0.001122	±2.5	PASS
Band2	9538	1	VN	NT	-4.93	-0.002584	±2.5	PASS
Band2	9538	1	VH	NT	-5.29	-0.002773	±2.5	PASS
Band2	9538	2	VL	NT	-0.44	-0.000231	±2.5	PASS
Band2	9538	2	VN	NT	2.00	0.001048	±2.5	PASS
Band2	9538	2	VH	NT	0.66	0.000346	±2.5	PASS
Band2	9538	3	VL	NT	-0.94	-0.000493	±2.5	PASS
Band2	9538	3	VN	NT	-0.16	-0.000084	±2.5	PASS
Band2	9538	3	VH	NT	2.10	0.001101	±2.5	PASS
Band2	9538	4	VL	NT	0.71	0.000372	±2.5	PASS

Band2	9538	4	VN	NT	-2.52	-0.001321	±2.5	PASS
Band2	9538	4	VH	NT	1.27	0.000666	±2.5	PASS

Temperature								
Band	Channel	Sub Test	Voltage (Vdc)	Temperature (°C)	Deviation (Hz)	Deviation (ppm)	Limit (ppm)	Verdict
Band2	9262	1	NV	-30	1.25	0.000675	±2.5	PASS
Band2	9262	1	NV	-20	-3.70	-0.001997	±2.5	PASS
Band2	9262	1	NV	0	-0.90	-0.000486	±2.5	PASS
Band2	9262	1	NV	10	-0.05	-0.000027	±2.5	PASS
Band2	9262	1	NV	20	1.82	0.000983	±2.5	PASS
Band2	9262	2	NV	-30	-9.59	-0.005177	±2.5	PASS
Band2	9262	2	NV	-20	4.86	0.002624	±2.5	PASS
Band2	9262	2	NV	0	5.13	0.002769	±2.5	PASS
Band2	9262	2	NV	10	6.88	0.003714	±2.5	PASS
Band2	9262	2	NV	20	6.49	0.003504	±2.5	PASS
Band2	9262	3	NV	-30	2.97	0.001603	±2.5	PASS
Band2	9262	3	NV	-20	2.68	0.001447	±2.5	PASS
Band2	9262	3	NV	0	-2.23	-0.001204	±2.5	PASS
Band2	9262	3	NV	10	-3.62	-0.001954	±2.5	PASS
Band2	9262	3	NV	20	-2.42	-0.001306	±2.5	PASS
Band2	9262	4	NV	-30	0.67	0.000362	±2.5	PASS
Band2	9262	4	NV	-20	-0.27	-0.000146	±2.5	PASS
Band2	9262	4	NV	0	0.65	0.000351	±2.5	PASS
Band2	9262	4	NV	10	-1.56	-0.000842	±2.5	PASS
Band2	9262	4	NV	20	1.07	0.000578	±2.5	PASS
Band2	9400	1	NV	-30	4.97	0.002644	±2.5	PASS
Band2	9400	1	NV	-20	-10.01	-0.005324	±2.5	PASS
Band2	9400	1	NV	0	1.13	0.000601	±2.5	PASS
Band2	9400	1	NV	10	3.37	0.001793	±2.5	PASS
Band2	9400	1	NV	20	0.26	0.000138	±2.5	PASS
Band2	9400	2	NV	-30	6.10	0.003245	±2.5	PASS
Band2	9400	2	NV	-20	3.50	0.001862	±2.5	PASS
Band2	9400	2	NV	0	4.15	0.002207	±2.5	PASS
Band2	9400	2	NV	10	4.49	0.002388	±2.5	PASS
Band2	9400	2	NV	20	3.50	0.001862	±2.5	PASS
Band2	9400	3	NV	-30	4.28	0.002277	±2.5	PASS

Band2	9400	3	NV	-20	5.86	0.003117	±2.5	PASS
Band2	9400	3	NV	0	8.18	0.004351	±2.5	PASS
Band2	9400	3	NV	10	5.72	0.003043	±2.5	PASS
Band2	9400	3	NV	20	-5.39	-0.002867	±2.5	PASS
Band2	9400	4	NV	-30	-1.90	-0.001011	±2.5	PASS
Band2	9400	4	NV	-20	-1.89	-0.001005	±2.5	PASS
Band2	9400	4	NV	0	0.52	0.000277	±2.5	PASS
Band2	9400	4	NV	10	4.70	0.002500	±2.5	PASS
Band2	9400	4	NV	20	2.42	0.001287	±2.5	PASS
Band2	9538	1	NV	-30	-7.15	-0.003748	±2.5	PASS
Band2	9538	1	NV	-20	2.46	0.001290	±2.5	PASS
Band2	9538	1	NV	0	0.24	0.000126	±2.5	PASS
Band2	9538	1	NV	10	3.72	0.001950	±2.5	PASS
Band2	9538	1	NV	20	2.32	0.001216	±2.5	PASS
Band2	9538	2	NV	-30	3.19	0.001672	±2.5	PASS
Band2	9538	2	NV	-20	2.81	0.001473	±2.5	PASS
Band2	9538	2	NV	0	-0.93	-0.000488	±2.5	PASS
Band2	9538	2	NV	10	-2.25	-0.001179	±2.5	PASS
Band2	9538	2	NV	20	1.28	0.000671	±2.5	PASS
Band2	9538	3	NV	-30	-6.48	-0.003397	±2.5	PASS
Band2	9538	3	NV	-20	-4.84	-0.002537	±2.5	PASS
Band2	9538	3	NV	0	-1.57	-0.000823	±2.5	PASS
Band2	9538	3	NV	10	1.44	0.000755	±2.5	PASS
Band2	9538	3	NV	20	1.78	0.000933	±2.5	PASS
Band2	9538	4	NV	-30	-3.97	-0.002081	±2.5	PASS
Band2	9538	4	NV	-20	-2.12	-0.001111	±2.5	PASS
Band2	9538	4	NV	0	0.97	0.000508	±2.5	PASS
Band2	9538	4	NV	10	-4.38	-0.002296	±2.5	PASS
Band2	9538	4	NV	20	4.86	0.002548	±2.5	PASS

Voltage								
Band	Channel	Sub Test	Voltage (Vdc)	Temperature (°C)	Deviation (Hz)	Deviation (ppm)	Limit (ppm)	Verdict
Band2	9262	1	VL	NT	-0.24	-0.000130	±2.5	PASS
Band2	9262	1	VN	NT	-1.32	-0.000713	±2.5	PASS
Band2	9262	1	VH	NT	1.42	0.000767	±2.5	PASS
Band2	9262	2	VL	NT	-1.18	-0.000637	±2.5	PASS
Band2	9262	2	VN	NT	2.68	0.001447	±2.5	PASS
Band2	9262	2	VH	NT	0.34	0.000184	±2.5	PASS
Band2	9262	3	VL	NT	-0.01	-0.000005	±2.5	PASS
Band2	9262	3	VN	NT	3.60	0.001943	±2.5	PASS
Band2	9262	3	VH	NT	-0.87	-0.000470	±2.5	PASS
Band2	9262	4	VL	NT	2.83	0.001528	±2.5	PASS
Band2	9262	4	VN	NT	0.49	0.000265	±2.5	PASS
Band2	9262	4	VH	NT	-0.75	-0.000405	±2.5	PASS
Band2	9262	5	VL	NT	-4.07	-0.002197	±2.5	PASS
Band2	9262	5	VN	NT	-1.30	-0.000702	±2.5	PASS
Band2	9262	5	VH	NT	0.32	0.000173	±2.5	PASS
Band2	9400	1	VL	NT	-5.78	-0.003074	±2.5	PASS
Band2	9400	1	VN	NT	4.04	0.002149	±2.5	PASS
Band2	9400	1	VH	NT	1.52	0.000809	±2.5	PASS
Band2	9400	2	VL	NT	-0.19	-0.000101	±2.5	PASS
Band2	9400	2	VN	NT	0.54	0.000287	±2.5	PASS
Band2	9400	2	VH	NT	0.46	0.000245	±2.5	PASS
Band2	9400	3	VL	NT	6.20	0.003298	±2.5	PASS
Band2	9400	3	VN	NT	-1.40	-0.000745	±2.5	PASS
Band2	9400	3	VH	NT	5.69	0.003027	±2.5	PASS
Band2	9400	4	VL	NT	-3.58	-0.001904	±2.5	PASS
Band2	9400	4	VN	NT	1.64	0.000872	±2.5	PASS
Band2	9400	4	VH	NT	-7.20	-0.003830	±2.5	PASS
Band2	9400	5	VL	NT	7.13	0.003793	±2.5	PASS
Band2	9400	5	VN	NT	5.15	0.002739	±2.5	PASS
Band2	9400	5	VH	NT	3.84	0.002043	±2.5	PASS
Band2	9538	1	VL	NT	-0.07	-0.000037	±2.5	PASS
Band2	9538	1	VN	NT	-0.77	-0.000404	±2.5	PASS
Band2	9538	1	VH	NT	1.09	0.000571	±2.5	PASS
Band2	9538	2	VL	NT	0.42	0.000220	±2.5	PASS

Band2	9538	2	VN	NT	4.52	0.002369	±2.5	PASS
Band2	9538	2	VH	NT	-0.44	-0.000231	±2.5	PASS
Band2	9538	3	VL	NT	-1.44	-0.000755	±2.5	PASS
Band2	9538	3	VN	NT	0.01	0.000005	±2.5	PASS
Band2	9538	3	VH	NT	-3.36	-0.001761	±2.5	PASS
Band2	9538	4	VL	NT	4.80	0.002516	±2.5	PASS
Band2	9538	4	VN	NT	-2.06	-0.001080	±2.5	PASS
Band2	9538	4	VH	NT	6.11	0.003203	±2.5	PASS
Band2	9538	5	VL	NT	1.75	0.000917	±2.5	PASS
Band2	9538	5	VN	NT	0.98	0.000514	±2.5	PASS
Band2	9538	5	VH	NT	1.31	0.000687	±2.5	PASS

Temperature								
Band	Channel	Sub Test	Voltage (Vdc)	Temperature (°C)	Deviation (Hz)	Deviation (ppm)	Limit (ppm)	Verdict
Band2	9262	1	NV	-30	-0.34	-0.000184	±2.5	PASS
Band2	9262	1	NV	-20	-0.84	-0.000453	±2.5	PASS
Band2	9262	1	NV	0	-0.59	-0.000319	±2.5	PASS
Band2	9262	1	NV	10	-1.73	-0.000934	±2.5	PASS
Band2	9262	1	NV	20	0.80	0.000432	±2.5	PASS
Band2	9262	2	NV	-30	-0.91	-0.000491	±2.5	PASS
Band2	9262	2	NV	-20	-0.99	-0.000534	±2.5	PASS
Band2	9262	2	NV	0	0.93	0.000502	±2.5	PASS
Band2	9262	2	NV	10	0.52	0.000281	±2.5	PASS
Band2	9262	2	NV	20	0.37	0.000200	±2.5	PASS
Band2	9262	3	NV	-30	-2.35	-0.001269	±2.5	PASS
Band2	9262	3	NV	-20	1.41	0.000761	±2.5	PASS
Band2	9262	3	NV	0	-2.35	-0.001269	±2.5	PASS
Band2	9262	3	NV	10	1.87	0.001010	±2.5	PASS
Band2	9262	3	NV	20	6.31	0.003406	±2.5	PASS
Band2	9262	4	NV	-30	2.48	0.001339	±2.5	PASS
Band2	9262	4	NV	-20	1.44	0.000777	±2.5	PASS
Band2	9262	4	NV	0	2.70	0.001458	±2.5	PASS
Band2	9262	4	NV	10	-2.55	-0.001377	±2.5	PASS
Band2	9262	4	NV	20	1.75	0.000945	±2.5	PASS
Band2	9262	5	NV	-30	-4.70	-0.002537	±2.5	PASS
Band2	9262	5	NV	-20	1.03	0.000556	±2.5	PASS

Band2	9262	5	NV	0	-0.49	-0.000265	±2.5	PASS
Band2	9262	5	NV	10	2.43	0.001312	±2.5	PASS
Band2	9262	5	NV	20	2.33	0.001258	±2.5	PASS
Band2	9400	1	NV	-30	0.35	0.000186	±2.5	PASS
Band2	9400	1	NV	-20	0.20	0.000106	±2.5	PASS
Band2	9400	1	NV	0	0.71	0.000378	±2.5	PASS
Band2	9400	1	NV	10	0.42	0.000223	±2.5	PASS
Band2	9400	1	NV	20	-3.94	-0.002096	±2.5	PASS
Band2	9400	2	NV	-30	6.13	0.003261	±2.5	PASS
Band2	9400	2	NV	-20	3.93	0.002090	±2.5	PASS
Band2	9400	2	NV	0	4.64	0.002468	±2.5	PASS
Band2	9400	2	NV	10	5.08	0.002702	±2.5	PASS
Band2	9400	2	NV	20	4.27	0.002271	±2.5	PASS
Band2	9400	3	NV	-30	-7.68	-0.004085	±2.5	PASS
Band2	9400	3	NV	-20	0.69	0.000367	±2.5	PASS
Band2	9400	3	NV	0	-7.07	-0.003761	±2.5	PASS
Band2	9400	3	NV	10	5.16	0.002745	±2.5	PASS
Band2	9400	3	NV	20	-3.88	-0.002064	±2.5	PASS
Band2	9400	4	NV	-30	2.19	0.001165	±2.5	PASS
Band2	9400	4	NV	-20	4.99	0.002654	±2.5	PASS
Band2	9400	4	NV	0	5.63	0.002995	±2.5	PASS
Band2	9400	4	NV	10	1.96	0.001043	±2.5	PASS
Band2	9400	4	NV	20	-1.81	-0.000963	±2.5	PASS
Band2	9400	5	NV	-30	-1.79	-0.000952	±2.5	PASS
Band2	9400	5	NV	-20	-3.07	-0.001633	±2.5	PASS
Band2	9400	5	NV	0	0.26	0.000138	±2.5	PASS
Band2	9400	5	NV	10	0.24	0.000128	±2.5	PASS
Band2	9400	5	NV	20	-1.07	-0.000569	±2.5	PASS
Band2	9538	1	NV	-30	0.19	0.000100	±2.5	PASS
Band2	9538	1	NV	-20	-3.68	-0.001929	±2.5	PASS
Band2	9538	1	NV	0	-1.20	-0.000629	±2.5	PASS
Band2	9538	1	NV	10	5.14	0.002694	±2.5	PASS
Band2	9538	1	NV	20	1.71	0.000896	±2.5	PASS
Band2	9538	2	NV	-30	2.25	0.001179	±2.5	PASS
Band2	9538	2	NV	-20	-0.44	-0.000231	±2.5	PASS
Band2	9538	2	NV	0	0.01	0.000005	±2.5	PASS
Band2	9538	2	NV	10	0.96	0.000503	±2.5	PASS

Band2	9538	2	NV	20	0.54	0.000283	±2.5	PASS
Band2	9538	3	NV	-30	-3.13	-0.001641	±2.5	PASS
Band2	9538	3	NV	-20	-2.37	-0.001242	±2.5	PASS
Band2	9538	3	NV	0	-4.41	-0.002312	±2.5	PASS
Band2	9538	3	NV	10	-3.58	-0.001877	±2.5	PASS
Band2	9538	3	NV	20	-2.85	-0.001494	±2.5	PASS
Band2	9538	4	NV	-30	3.70	0.001940	±2.5	PASS
Band2	9538	4	NV	-20	6.11	0.003203	±2.5	PASS
Band2	9538	4	NV	0	1.20	0.000629	±2.5	PASS
Band2	9538	4	NV	10	5.87	0.003077	±2.5	PASS
Band2	9538	4	NV	20	3.12	0.001636	±2.5	PASS
Band2	9538	5	NV	-30	0.01	0.000005	±2.5	PASS
Band2	9538	5	NV	-20	-1.32	-0.000692	±2.5	PASS
Band2	9538	5	NV	0	1.03	0.000540	±2.5	PASS
Band2	9538	5	NV	10	-2.49	-0.001305	±2.5	PASS
Band2	9538	5	NV	20	0.82	0.000430	±2.5	PASS

Voltage							
Band	Channel	Voltage (Vdc)	Temperature (°C)	Deviation (Hz)	Deviation (ppm)	Limit (ppm)	Verdict
Band4	1312	VL	NT	-2.05	-0.001197	±2.5	PASS
Band4	1312	VN	NT	-7.18	-0.004193	±2.5	PASS
Band4	1312	VH	NT	-8.63	-0.005040	±2.5	PASS
Band4	1413	VL	NT	3.28	0.001893	±2.5	PASS
Band4	1413	VN	NT	1.34	0.000773	±2.5	PASS
Band4	1413	VH	NT	1.55	0.000895	±2.5	PASS
Band4	1513	VL	NT	6.45	0.003680	±2.5	PASS
Band4	1513	VN	NT	-6.98	-0.003983	±2.5	PASS
Band4	1513	VH	NT	3.83	0.002185	±2.5	PASS

Temperature							
Band	Channel	Voltage (Vdc)	Temperature (°C)	Deviation (Hz)	Deviation (ppm)	Limit (ppm)	Verdict
Band4	1312	NV	-30	7.80	0.004555	±2.5	PASS
Band4	1312	NV	-20	2.23	0.001302	±2.5	PASS
Band4	1312	NV	0	0.38	0.000222	±2.5	PASS
Band4	1312	NV	10	-2.70	-0.001577	±2.5	PASS
Band4	1312	NV	20	-0.58	-0.000339	±2.5	PASS
Band4	1413	NV	-30	2.60	0.001501	±2.5	PASS
Band4	1413	NV	-20	-0.26	-0.000150	±2.5	PASS
Band4	1413	NV	0	-1.04	-0.000600	±2.5	PASS
Band4	1413	NV	10	-2.17	-0.001252	±2.5	PASS
Band4	1413	NV	20	-0.68	-0.000392	±2.5	PASS
Band4	1513	NV	-30	-4.33	-0.002471	±2.5	PASS
Band4	1513	NV	-20	-2.77	-0.001581	±2.5	PASS
Band4	1513	NV	0	5.54	0.003161	±2.5	PASS
Band4	1513	NV	10	-1.70	-0.000970	±2.5	PASS
Band4	1513	NV	20	-0.93	-0.000531	±2.5	PASS

Voltage								
Band	Channel	Sub Test	Voltage (Vdc)	Temperature (°C)	Deviation (Hz)	Deviation (ppm)	Limit (ppm)	Verdict
Band4	1312	1	VL	NT	2.83	0.001653	±2.5	PASS
Band4	1312	1	VN	NT	8.36	0.004882	±2.5	PASS
Band4	1312	1	VH	NT	2.32	0.001355	±2.5	PASS
Band4	1312	2	VL	NT	-0.09	-0.000053	±2.5	PASS
Band4	1312	2	VN	NT	-5.36	-0.003130	±2.5	PASS
Band4	1312	2	VH	NT	-3.08	-0.001799	±2.5	PASS
Band4	1312	3	VL	NT	-1.27	-0.000742	±2.5	PASS
Band4	1312	3	VN	NT	-0.59	-0.000345	±2.5	PASS
Band4	1312	3	VH	NT	1.95	0.001139	±2.5	PASS
Band4	1312	4	VL	NT	3.20	0.001869	±2.5	PASS
Band4	1312	4	VN	NT	2.13	0.001244	±2.5	PASS
Band4	1312	4	VH	NT	5.22	0.003048	±2.5	PASS
Band4	1413	1	VL	NT	-5.82	-0.003359	±2.5	PASS
Band4	1413	1	VN	NT	-5.19	-0.002995	±2.5	PASS
Band4	1413	1	VH	NT	-9.12	-0.005264	±2.5	PASS
Band4	1413	2	VL	NT	-0.50	-0.000289	±2.5	PASS
Band4	1413	2	VN	NT	0.47	0.000271	±2.5	PASS
Band4	1413	2	VH	NT	-0.44	-0.000254	±2.5	PASS
Band4	1413	3	VL	NT	-8.67	-0.005004	±2.5	PASS
Band4	1413	3	VN	NT	-5.51	-0.003180	±2.5	PASS
Band4	1413	3	VH	NT	-10.08	-0.005818	±2.5	PASS
Band4	1413	4	VL	NT	6.57	0.003792	±2.5	PASS
Band4	1413	4	VN	NT	5.17	0.002984	±2.5	PASS
Band4	1413	4	VH	NT	0.98	0.000566	±2.5	PASS
Band4	1513	1	VL	NT	-0.83	-0.000474	±2.5	PASS
Band4	1513	1	VN	NT	-2.21	-0.001261	±2.5	PASS
Band4	1513	1	VH	NT	-2.09	-0.001193	±2.5	PASS
Band4	1513	2	VL	NT	-2.24	-0.001278	±2.5	PASS
Band4	1513	2	VN	NT	-3.40	-0.001940	±2.5	PASS
Band4	1513	2	VH	NT	-2.42	-0.001381	±2.5	PASS
Band4	1513	3	VL	NT	-1.02	-0.000582	±2.5	PASS
Band4	1513	3	VN	NT	-1.95	-0.001113	±2.5	PASS
Band4	1513	3	VH	NT	-3.49	-0.001991	±2.5	PASS
Band4	1513	4	VL	NT	-7.19	-0.004102	±2.5	PASS

Band4	1513	4	VN	NT	5.32	0.003035	±2.5	PASS
Band4	1513	4	VH	NT	6.04	0.003446	±2.5	PASS

Temperature								
Band	Channel	Sub Test	Voltage (Vdc)	Temperature (°C)	Deviation (Hz)	Deviation (ppm)	Limit (ppm)	Verdict
Band4	1312	1	NV	-30	-1.10	-0.000642	±2.5	PASS
Band4	1312	1	NV	-20	-0.19	-0.000111	±2.5	PASS
Band4	1312	1	NV	0	-3.96	-0.002313	±2.5	PASS
Band4	1312	1	NV	10	-3.88	-0.002266	±2.5	PASS
Band4	1312	1	NV	20	7.20	0.004205	±2.5	PASS
Band4	1312	2	NV	-30	0.67	0.000391	±2.5	PASS
Band4	1312	2	NV	-20	-7.10	-0.004146	±2.5	PASS
Band4	1312	2	NV	0	-3.30	-0.001927	±2.5	PASS
Band4	1312	2	NV	10	5.71	0.003335	±2.5	PASS
Band4	1312	2	NV	20	1.90	0.001110	±2.5	PASS
Band4	1312	3	NV	-30	-2.04	-0.001191	±2.5	PASS
Band4	1312	3	NV	-20	-2.97	-0.001734	±2.5	PASS
Band4	1312	3	NV	0	-1.24	-0.000724	±2.5	PASS
Band4	1312	3	NV	10	-5.69	-0.003323	±2.5	PASS
Band4	1312	3	NV	20	-5.55	-0.003241	±2.5	PASS
Band4	1312	4	NV	-30	-2.32	-0.001355	±2.5	PASS
Band4	1312	4	NV	-20	0.89	0.000520	±2.5	PASS
Band4	1312	4	NV	0	-0.14	-0.000082	±2.5	PASS
Band4	1312	4	NV	10	1.98	0.001156	±2.5	PASS
Band4	1312	4	NV	20	-2.60	-0.001518	±2.5	PASS
Band4	1413	1	NV	-30	4.76	0.002747	±2.5	PASS
Band4	1413	1	NV	-20	5.93	0.003423	±2.5	PASS
Band4	1413	1	NV	0	-0.97	-0.000560	±2.5	PASS
Band4	1413	1	NV	10	-2.19	-0.001264	±2.5	PASS
Band4	1413	1	NV	20	2.59	0.001495	±2.5	PASS
Band4	1413	2	NV	-30	1.14	0.000658	±2.5	PASS
Band4	1413	2	NV	-20	-1.87	-0.001079	±2.5	PASS
Band4	1413	2	NV	0	-3.39	-0.001957	±2.5	PASS
Band4	1413	2	NV	10	-4.87	-0.002811	±2.5	PASS
Band4	1413	2	NV	20	0.04	0.000023	±2.5	PASS
Band4	1413	3	NV	-30	-9.58	-0.005529	±2.5	PASS

Band4	1413	3	NV	-20	-10.29	-0.005939	±2.5	PASS
Band4	1413	3	NV	0	-5.58	-0.003221	±2.5	PASS
Band4	1413	3	NV	10	-7.60	-0.004386	±2.5	PASS
Band4	1413	3	NV	20	4.36	0.002516	±2.5	PASS
Band4	1413	4	NV	-30	0.49	0.000283	±2.5	PASS
Band4	1413	4	NV	-20	-1.04	-0.000600	±2.5	PASS
Band4	1413	4	NV	0	-0.36	-0.000208	±2.5	PASS
Band4	1413	4	NV	10	-0.54	-0.000312	±2.5	PASS
Band4	1413	4	NV	20	2.70	0.001558	±2.5	PASS
Band4	1513	1	NV	-30	1.67	0.000953	±2.5	PASS
Band4	1513	1	NV	-20	1.19	0.000679	±2.5	PASS
Band4	1513	1	NV	0	-0.25	-0.000143	±2.5	PASS
Band4	1513	1	NV	10	2.37	0.001352	±2.5	PASS
Band4	1513	1	NV	20	3.65	0.002083	±2.5	PASS
Band4	1513	2	NV	-30	-1.17	-0.000668	±2.5	PASS
Band4	1513	2	NV	-20	-0.90	-0.000514	±2.5	PASS
Band4	1513	2	NV	0	-4.46	-0.002545	±2.5	PASS
Band4	1513	2	NV	10	-1.26	-0.000719	±2.5	PASS
Band4	1513	2	NV	20	-1.34	-0.000765	±2.5	PASS
Band4	1513	3	NV	-30	-1.88	-0.001073	±2.5	PASS
Band4	1513	3	NV	-20	3.73	0.002128	±2.5	PASS
Band4	1513	3	NV	0	2.11	0.001204	±2.5	PASS
Band4	1513	3	NV	10	2.73	0.001558	±2.5	PASS
Band4	1513	3	NV	20	5.82	0.003321	±2.5	PASS
Band4	1513	4	NV	-30	0.63	0.000359	±2.5	PASS
Band4	1513	4	NV	-20	0.90	0.000514	±2.5	PASS
Band4	1513	4	NV	0	-5.92	-0.003378	±2.5	PASS
Band4	1513	4	NV	10	-2.12	-0.001210	±2.5	PASS
Band4	1513	4	NV	20	-3.28	-0.001872	±2.5	PASS

Voltage							
Band	Channel	Voltage (Vdc)	Temperature (°C)	Deviation (Hz)	Deviation (ppm)	Limit (ppm)	Verdict
Band5	4132	VL	NT	2.13	0.002577	±2.5	PASS
Band5	4132	VN	NT	1.06	0.001283	±2.5	PASS
Band5	4132	VH	NT	1.56	0.001888	±2.5	PASS
Band5	4182	VL	NT	0.59	0.000705	±2.5	PASS
Band5	4182	VN	NT	1.96	0.002343	±2.5	PASS
Band5	4182	VH	NT	-0.57	-0.000681	±2.5	PASS
Band5	4233	VL	NT	1.77	0.002091	±2.5	PASS
Band5	4233	VN	NT	1.49	0.001760	±2.5	PASS
Band5	4233	VH	NT	2.18	0.002575	±2.5	PASS

Temperature							
Band	Channel	Voltage (Vdc)	Temperature (°C)	Deviation (Hz)	Deviation (ppm)	Limit (ppm)	Verdict
Band5	4132	NV	-30	-0.96	-0.001162	±2.5	PASS
Band5	4132	NV	-20	-0.61	-0.000738	±2.5	PASS
Band5	4132	NV	0	0.04	0.000048	±2.5	PASS
Band5	4132	NV	10	1.61	0.001948	±2.5	PASS
Band5	4132	NV	20	-0.66	-0.000799	±2.5	PASS
Band5	4182	NV	-30	-1.68	-0.002009	±2.5	PASS
Band5	4182	NV	-20	-0.08	-0.000096	±2.5	PASS
Band5	4182	NV	0	-0.09	-0.000108	±2.5	PASS
Band5	4182	NV	10	-0.87	-0.001040	±2.5	PASS
Band5	4182	NV	20	0.62	0.000741	±2.5	PASS
Band5	4233	NV	-30	2.70	0.003189	±2.5	PASS
Band5	4233	NV	-20	1.81	0.002138	±2.5	PASS
Band5	4233	NV	0	-1.37	-0.001618	±2.5	PASS
Band5	4233	NV	10	-0.08	-0.000094	±2.5	PASS
Band5	4233	NV	20	-0.97	-0.001146	±2.5	PASS

Voltage								
Band	Channel	Sub Test	Voltage (Vdc)	Temperature (°C)	Deviation (Hz)	Deviation (ppm)	Limit (ppm)	Verdict
Band5	4132	1	VL	NT	1.36	0.001646	±2.5	PASS
Band5	4132	1	VN	NT	2.31	0.002795	±2.5	PASS
Band5	4132	1	VH	NT	-0.19	-0.000230	±2.5	PASS
Band5	4132	2	VL	NT	0.94	0.001137	±2.5	PASS
Band5	4132	2	VN	NT	1.09	0.001319	±2.5	PASS
Band5	4132	2	VH	NT	0.16	0.000194	±2.5	PASS
Band5	4132	3	VL	NT	-0.23	-0.000278	±2.5	PASS
Band5	4132	3	VN	NT	0.51	0.000617	±2.5	PASS
Band5	4132	3	VH	NT	0.43	0.000520	±2.5	PASS
Band5	4132	4	VL	NT	0.31	0.000375	±2.5	PASS
Band5	4132	4	VN	NT	0.29	0.000351	±2.5	PASS
Band5	4132	4	VH	NT	1.41	0.001706	±2.5	PASS
Band5	4182	1	VL	NT	-0.64	-0.000765	±2.5	PASS
Band5	4182	1	VN	NT	0.13	0.000155	±2.5	PASS
Band5	4182	1	VH	NT	-2.22	-0.002654	±2.5	PASS
Band5	4182	2	VL	NT	-1.22	-0.001459	±2.5	PASS
Band5	4182	2	VN	NT	0.98	0.001172	±2.5	PASS
Band5	4182	2	VH	NT	-2.87	-0.003431	±2.5	PASS
Band5	4182	3	VL	NT	-0.06	-0.000072	±2.5	PASS
Band5	4182	3	VN	NT	-0.56	-0.000670	±2.5	PASS
Band5	4182	3	VH	NT	0.29	0.000347	±2.5	PASS
Band5	4182	4	VL	NT	-0.20	-0.000239	±2.5	PASS
Band5	4182	4	VN	NT	0.94	0.001124	±2.5	PASS
Band5	4182	4	VH	NT	0.13	0.000155	±2.5	PASS
Band5	4233	1	VL	NT	-0.22	-0.000260	±2.5	PASS
Band5	4233	1	VN	NT	-1.78	-0.002103	±2.5	PASS
Band5	4233	1	VH	NT	0.31	0.000366	±2.5	PASS
Band5	4233	2	VL	NT	2.10	0.002481	±2.5	PASS
Band5	4233	2	VN	NT	2.56	0.003024	±2.5	PASS
Band5	4233	2	VH	NT	3.33	0.003933	±2.5	PASS
Band5	4233	3	VL	NT	-0.53	-0.000626	±2.5	PASS
Band5	4233	3	VN	NT	-0.26	-0.000307	±2.5	PASS
Band5	4233	3	VH	NT	0.19	0.000224	±2.5	PASS
Band5	4233	4	VL	NT	-0.31	-0.000366	±2.5	PASS

Band5	4233	4	VN	NT	-0.04	-0.000047	±2.5	PASS
Band5	4233	4	VH	NT	-0.14	-0.000165	±2.5	PASS

Temperature								
Band	Channel	Sub Test	Voltage (Vdc)	Temperature (°C)	Deviation (Hz)	Deviation (ppm)	Limit (ppm)	Verdict
Band5	4132	1	NV	-30	-0.11	-0.000133	±2.5	PASS
Band5	4132	1	NV	-20	0.42	0.000508	±2.5	PASS
Band5	4132	1	NV	0	-1.83	-0.002214	±2.5	PASS
Band5	4132	1	NV	10	-1.18	-0.001428	±2.5	PASS
Band5	4132	1	NV	20	-0.86	-0.001041	±2.5	PASS
Band5	4132	2	NV	-30	1.24	0.001500	±2.5	PASS
Band5	4132	2	NV	-20	0.69	0.000835	±2.5	PASS
Band5	4132	2	NV	0	-1.92	-0.002323	±2.5	PASS
Band5	4132	2	NV	10	-0.76	-0.000920	±2.5	PASS
Band5	4132	2	NV	20	0.88	0.001065	±2.5	PASS
Band5	4132	3	NV	-30	0.11	0.000133	±2.5	PASS
Band5	4132	3	NV	-20	0.51	0.000617	±2.5	PASS
Band5	4132	3	NV	0	1.80	0.002178	±2.5	PASS
Band5	4132	3	NV	10	1.62	0.001960	±2.5	PASS
Band5	4132	3	NV	20	2.24	0.002711	±2.5	PASS
Band5	4132	4	NV	-30	-0.87	-0.001053	±2.5	PASS
Band5	4132	4	NV	-20	-1.10	-0.001331	±2.5	PASS
Band5	4132	4	NV	0	-0.33	-0.000399	±2.5	PASS
Band5	4132	4	NV	10	0.10	0.000121	±2.5	PASS
Band5	4132	4	NV	20	0.29	0.000351	±2.5	PASS
Band5	4182	1	NV	-30	-0.58	-0.000693	±2.5	PASS
Band5	4182	1	NV	-20	1.74	0.002080	±2.5	PASS
Band5	4182	1	NV	0	-2.67	-0.003192	±2.5	PASS
Band5	4182	1	NV	10	-0.10	-0.000120	±2.5	PASS
Band5	4182	1	NV	20	-0.78	-0.000933	±2.5	PASS
Band5	4182	2	NV	-30	-0.84	-0.001004	±2.5	PASS
Band5	4182	2	NV	-20	-1.20	-0.001435	±2.5	PASS
Band5	4182	2	NV	0	-0.11	-0.000132	±2.5	PASS
Band5	4182	2	NV	10	-1.60	-0.001913	±2.5	PASS
Band5	4182	2	NV	20	-1.31	-0.001566	±2.5	PASS
Band5	4182	3	NV	-30	-0.42	-0.000502	±2.5	PASS

Band5	4182	3	NV	-20	0.89	0.001064	±2.5	PASS
Band5	4182	3	NV	0	-0.36	-0.000430	±2.5	PASS
Band5	4182	3	NV	10	0.02	0.000024	±2.5	PASS
Band5	4182	3	NV	20	-0.41	-0.000490	±2.5	PASS
Band5	4182	4	NV	-30	0.95	0.001136	±2.5	PASS
Band5	4182	4	NV	-20	1.12	0.001339	±2.5	PASS
Band5	4182	4	NV	0	1.31	0.001566	±2.5	PASS
Band5	4182	4	NV	10	2.17	0.002594	±2.5	PASS
Band5	4182	4	NV	20	1.59	0.001901	±2.5	PASS
Band5	4233	1	NV	-30	0.98	0.001158	±2.5	PASS
Band5	4233	1	NV	-20	0.14	0.000165	±2.5	PASS
Band5	4233	1	NV	0	1.12	0.001323	±2.5	PASS
Band5	4233	1	NV	10	-0.17	-0.000201	±2.5	PASS
Band5	4233	1	NV	20	1.72	0.002032	±2.5	PASS
Band5	4233	2	NV	-30	-0.64	-0.000756	±2.5	PASS
Band5	4233	2	NV	-20	1.02	0.001205	±2.5	PASS
Band5	4233	2	NV	0	2.96	0.003496	±2.5	PASS
Band5	4233	2	NV	10	0.39	0.000461	±2.5	PASS
Band5	4233	2	NV	20	0.19	0.000224	±2.5	PASS
Band5	4233	3	NV	-30	0.14	0.000165	±2.5	PASS
Band5	4233	3	NV	-20	-0.11	-0.000130	±2.5	PASS
Band5	4233	3	NV	0	0.54	0.000638	±2.5	PASS
Band5	4233	3	NV	10	-0.56	-0.000661	±2.5	PASS
Band5	4233	3	NV	20	-0.66	-0.000780	±2.5	PASS
Band5	4233	4	NV	-30	-0.78	-0.000921	±2.5	PASS
Band5	4233	4	NV	-20	0.01	0.000012	±2.5	PASS
Band5	4233	4	NV	0	0.22	0.000260	±2.5	PASS
Band5	4233	4	NV	10	-0.06	-0.000071	±2.5	PASS
Band5	4233	4	NV	20	0.31	0.000366	±2.5	PASS

Voltage								
Band	Channel	Sub Test	Voltage (Vdc)	Temperature (°C)	Deviation (Hz)	Deviation (ppm)	Limit (ppm)	Verdict
Band5	4132	1	VL	NT	-0.39	-0.000472	±2.5	PASS
Band5	4132	1	VN	NT	-1.18	-0.001428	±2.5	PASS
Band5	4132	1	VH	NT	-0.82	-0.000992	±2.5	PASS
Band5	4132	2	VL	NT	0.11	0.000133	±2.5	PASS
Band5	4132	2	VN	NT	-0.72	-0.000871	±2.5	PASS
Band5	4132	2	VH	NT	-0.04	-0.000048	±2.5	PASS
Band5	4132	3	VL	NT	-0.37	-0.000448	±2.5	PASS
Band5	4132	3	VN	NT	0.66	0.000799	±2.5	PASS
Band5	4132	3	VH	NT	-0.83	-0.001004	±2.5	PASS
Band5	4132	4	VL	NT	-1.67	-0.002021	±2.5	PASS
Band5	4132	4	VN	NT	-0.12	-0.000145	±2.5	PASS
Band5	4132	4	VH	NT	-0.99	-0.001198	±2.5	PASS
Band5	4132	5	VL	NT	-0.22	-0.000266	±2.5	PASS
Band5	4132	5	VN	NT	-1.53	-0.001851	±2.5	PASS
Band5	4132	5	VH	NT	-1.57	-0.001900	±2.5	PASS
Band5	4182	1	VL	NT	-0.09	-0.000108	±2.5	PASS
Band5	4182	1	VN	NT	0.08	0.000096	±2.5	PASS
Band5	4182	1	VH	NT	0.68	0.000813	±2.5	PASS
Band5	4182	2	VL	NT	-0.09	-0.000108	±2.5	PASS
Band5	4182	2	VN	NT	-0.62	-0.000741	±2.5	PASS
Band5	4182	2	VH	NT	-0.04	-0.000048	±2.5	PASS
Band5	4182	3	VL	NT	-0.40	-0.000478	±2.5	PASS
Band5	4182	3	VN	NT	-0.32	-0.000383	±2.5	PASS
Band5	4182	3	VH	NT	-1.64	-0.001961	±2.5	PASS
Band5	4182	4	VL	NT	0.58	0.000693	±2.5	PASS
Band5	4182	4	VN	NT	-1.04	-0.001243	±2.5	PASS
Band5	4182	4	VH	NT	-0.28	-0.000335	±2.5	PASS
Band5	4182	5	VL	NT	-0.93	-0.001112	±2.5	PASS
Band5	4182	5	VN	NT	0.67	0.000801	±2.5	PASS
Band5	4182	5	VH	NT	0.06	0.000072	±2.5	PASS
Band5	4233	1	VL	NT	1.29	0.001524	±2.5	PASS
Band5	4233	1	VN	NT	0.97	0.001146	±2.5	PASS
Band5	4233	1	VH	NT	-0.89	-0.001051	±2.5	PASS
Band5	4233	2	VL	NT	0.44	0.000520	±2.5	PASS

Band5	4233	2	VN	NT	1.30	0.001536	±2.5	PASS
Band5	4233	2	VH	NT	0.36	0.000425	±2.5	PASS
Band5	4233	3	VL	NT	-1.25	-0.001476	±2.5	PASS
Band5	4233	3	VN	NT	-1.01	-0.001193	±2.5	PASS
Band5	4233	3	VH	NT	-1.20	-0.001417	±2.5	PASS
Band5	4233	4	VL	NT	0.76	0.000898	±2.5	PASS
Band5	4233	4	VN	NT	1.96	0.002315	±2.5	PASS
Band5	4233	4	VH	NT	-0.04	-0.000047	±2.5	PASS
Band5	4233	5	VL	NT	-0.75	-0.000886	±2.5	PASS
Band5	4233	5	VN	NT	-0.37	-0.000437	±2.5	PASS
Band5	4233	5	VH	NT	0.09	0.000106	±2.5	PASS

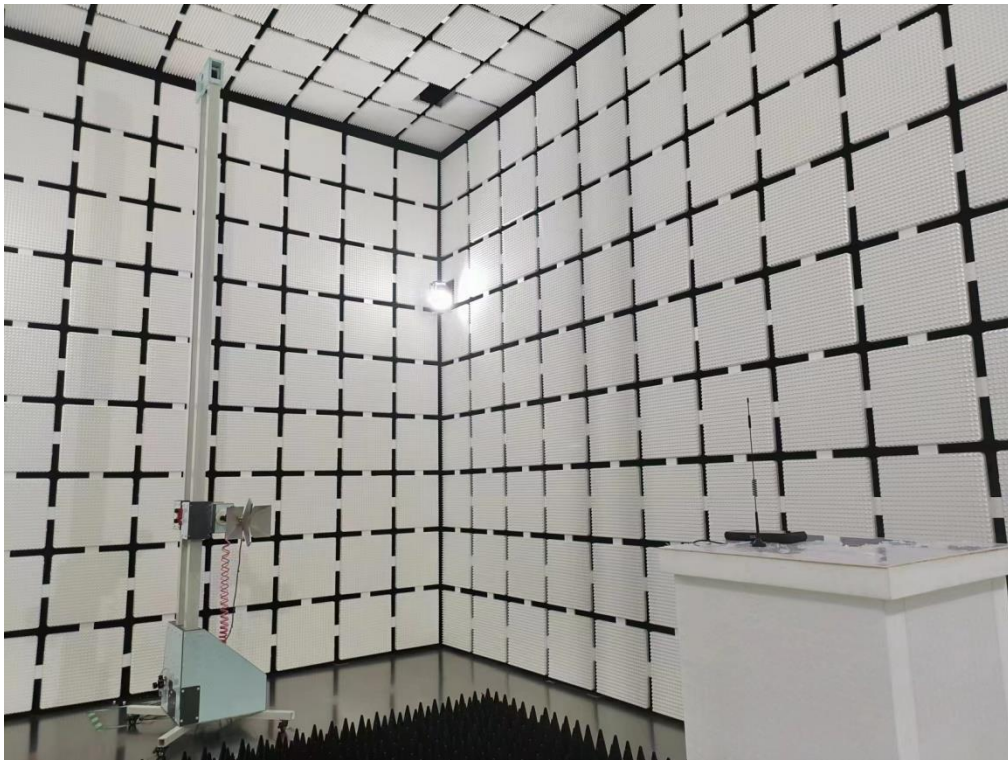
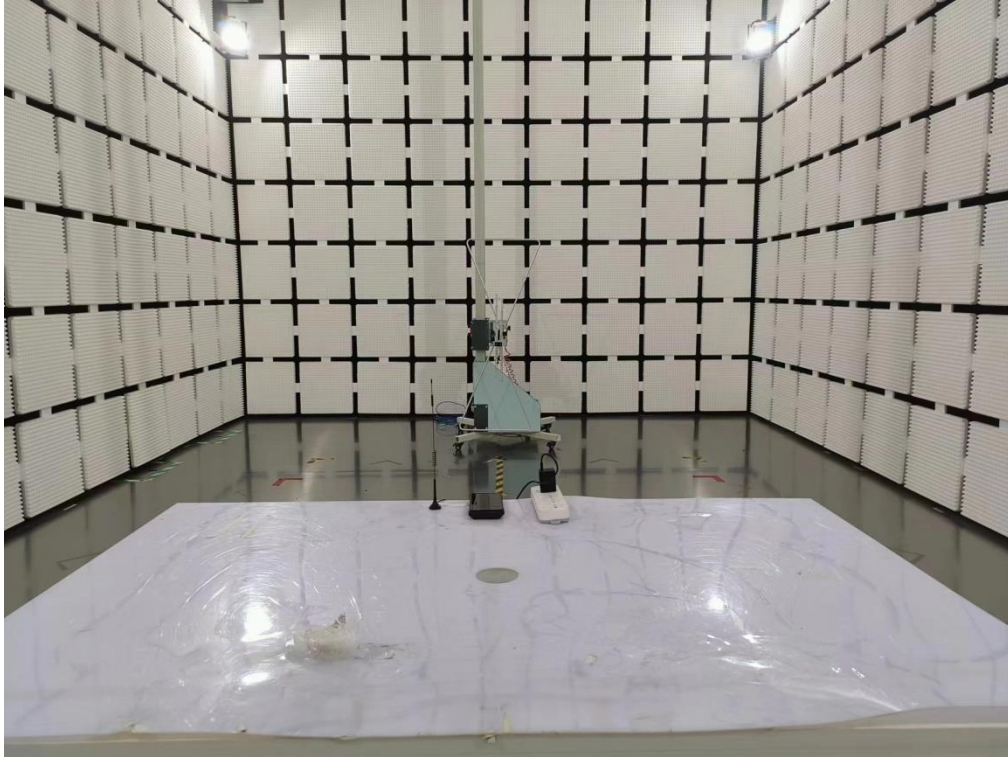
Temperature								
Band	Channel	Sub Test	Voltage (Vdc)	Temperature (°C)	Deviation (Hz)	Deviation (ppm)	Limit (ppm)	Verdict
Band5	4132	1	NV	-30	-1.93	-0.002335	±2.5	PASS
Band5	4132	1	NV	-20	0.06	0.000073	±2.5	PASS
Band5	4132	1	NV	0	-1.29	-0.001561	±2.5	PASS
Band5	4132	1	NV	10	0.36	0.000436	±2.5	PASS
Band5	4132	1	NV	20	-0.20	-0.000242	±2.5	PASS
Band5	4132	2	NV	-30	-0.79	-0.000956	±2.5	PASS
Band5	4132	2	NV	-20	-1.02	-0.001234	±2.5	PASS
Band5	4132	2	NV	0	-0.39	-0.000472	±2.5	PASS
Band5	4132	2	NV	10	-0.97	-0.001174	±2.5	PASS
Band5	4132	2	NV	20	0.14	0.000169	±2.5	PASS
Band5	4132	3	NV	-30	-0.57	-0.000690	±2.5	PASS
Band5	4132	3	NV	-20	0.34	0.000411	±2.5	PASS
Band5	4132	3	NV	0	0.04	0.000048	±2.5	PASS
Band5	4132	3	NV	10	1.24	0.001500	±2.5	PASS
Band5	4132	3	NV	20	0.81	0.000980	±2.5	PASS
Band5	4132	4	NV	-30	-0.17	-0.000206	±2.5	PASS
Band5	4132	4	NV	-20	1.05	0.001271	±2.5	PASS
Band5	4132	4	NV	0	0.31	0.000375	±2.5	PASS
Band5	4132	4	NV	10	-0.87	-0.001053	±2.5	PASS
Band5	4132	4	NV	20	-0.54	-0.000653	±2.5	PASS
Band5	4132	5	NV	-30	-0.79	-0.000956	±2.5	PASS
Band5	4132	5	NV	-20	-1.04	-0.001258	±2.5	PASS

Band5	4132	5	NV	0	-0.79	-0.000956	±2.5	PASS
Band5	4132	5	NV	10	-0.10	-0.000121	±2.5	PASS
Band5	4132	5	NV	20	0.24	0.000290	±2.5	PASS
Band5	4182	1	NV	-30	0.02	0.000024	±2.5	PASS
Band5	4182	1	NV	-20	-1.62	-0.001937	±2.5	PASS
Band5	4182	1	NV	0	-1.34	-0.001602	±2.5	PASS
Band5	4182	1	NV	10	-0.16	-0.000191	±2.5	PASS
Band5	4182	1	NV	20	-0.01	-0.000012	±2.5	PASS
Band5	4182	2	NV	-30	-0.55	-0.000658	±2.5	PASS
Band5	4182	2	NV	-20	0.40	0.000478	±2.5	PASS
Band5	4182	2	NV	0	-0.59	-0.000705	±2.5	PASS
Band5	4182	2	NV	10	-0.93	-0.001112	±2.5	PASS
Band5	4182	2	NV	20	-1.16	-0.001387	±2.5	PASS
Band5	4182	3	NV	-30	-0.74	-0.000885	±2.5	PASS
Band5	4182	3	NV	-20	-1.03	-0.001231	±2.5	PASS
Band5	4182	3	NV	0	-1.14	-0.001363	±2.5	PASS
Band5	4182	3	NV	10	-0.76	-0.000909	±2.5	PASS
Band5	4182	3	NV	20	-1.09	-0.001303	±2.5	PASS
Band5	4182	4	NV	-30	1.75	0.002092	±2.5	PASS
Band5	4182	4	NV	-20	-0.31	-0.000371	±2.5	PASS
Band5	4182	4	NV	0	0.49	0.000586	±2.5	PASS
Band5	4182	4	NV	10	-0.19	-0.000227	±2.5	PASS
Band5	4182	4	NV	20	-0.53	-0.000634	±2.5	PASS
Band5	4182	5	NV	-30	-0.72	-0.000861	±2.5	PASS
Band5	4182	5	NV	-20	0.08	0.000096	±2.5	PASS
Band5	4182	5	NV	0	-0.01	-0.000012	±2.5	PASS
Band5	4182	5	NV	10	-0.87	-0.001040	±2.5	PASS
Band5	4182	5	NV	20	-0.57	-0.000681	±2.5	PASS
Band5	4233	1	NV	-30	3.58	0.004229	±2.5	PASS
Band5	4233	1	NV	-20	0.12	0.000142	±2.5	PASS
Band5	4233	1	NV	0	-1.62	-0.001914	±2.5	PASS
Band5	4233	1	NV	10	2.03	0.002398	±2.5	PASS
Band5	4233	1	NV	20	2.52	0.002977	±2.5	PASS
Band5	4233	2	NV	-30	-0.29	-0.000343	±2.5	PASS
Band5	4233	2	NV	-20	-0.46	-0.000543	±2.5	PASS
Band5	4233	2	NV	0	0.35	0.000413	±2.5	PASS
Band5	4233	2	NV	10	-0.58	-0.000685	±2.5	PASS

Band5	4233	2	NV	20	-0.69	-0.000815	±2.5	PASS
Band5	4233	3	NV	-30	-0.77	-0.000910	±2.5	PASS
Band5	4233	3	NV	-20	0.19	0.000224	±2.5	PASS
Band5	4233	3	NV	0	-0.65	-0.000768	±2.5	PASS
Band5	4233	3	NV	10	0.38	0.000449	±2.5	PASS
Band5	4233	3	NV	20	1.83	0.002162	±2.5	PASS
Band5	4233	4	NV	-30	1.39	0.001642	±2.5	PASS
Band5	4233	4	NV	-20	1.52	0.001795	±2.5	PASS
Band5	4233	4	NV	0	0.33	0.000390	±2.5	PASS
Band5	4233	4	NV	10	0.66	0.000780	±2.5	PASS
Band5	4233	4	NV	20	0.57	0.000673	±2.5	PASS
Band5	4233	5	NV	-30	-0.28	-0.000331	±2.5	PASS
Band5	4233	5	NV	-20	0.89	0.001051	±2.5	PASS
Band5	4233	5	NV	0	1.25	0.001476	±2.5	PASS
Band5	4233	5	NV	10	0.08	0.000094	±2.5	PASS
Band5	4233	5	NV	20	1.45	0.001713	±2.5	PASS

5 Test Setup Photo

Radiated Emission



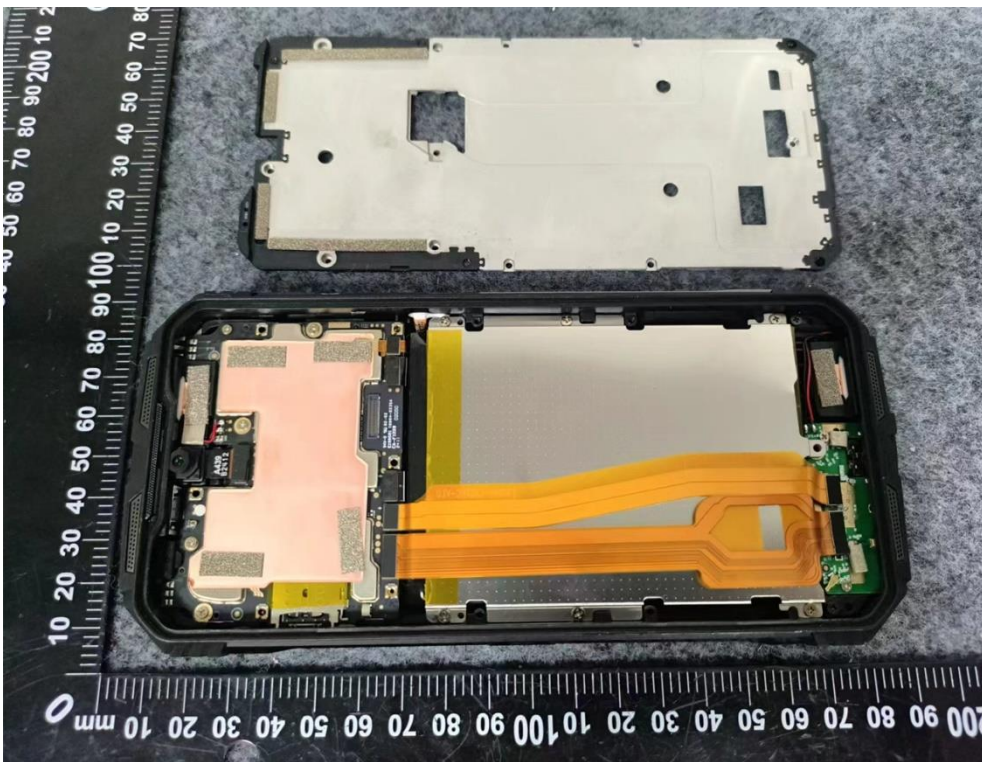
6 Photos of EUT

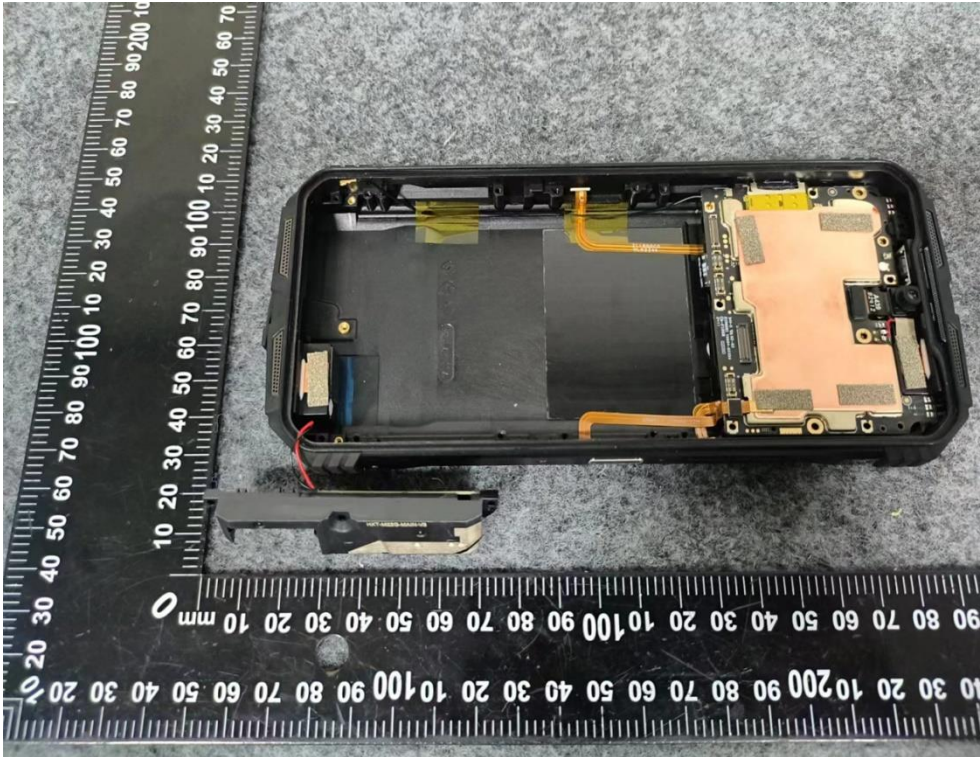


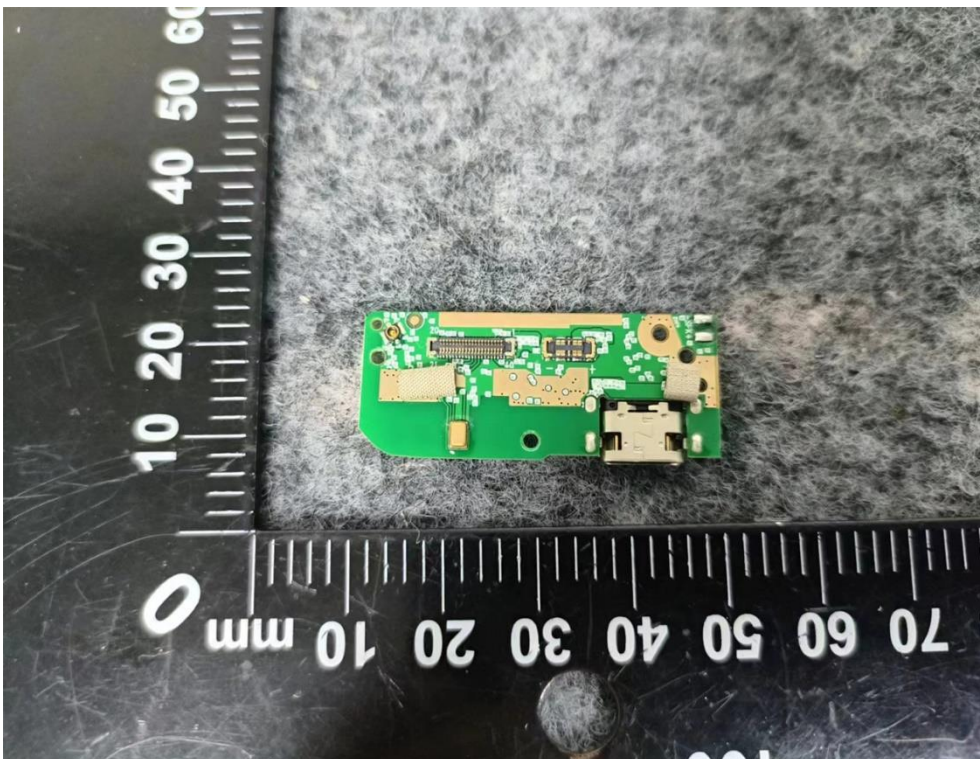
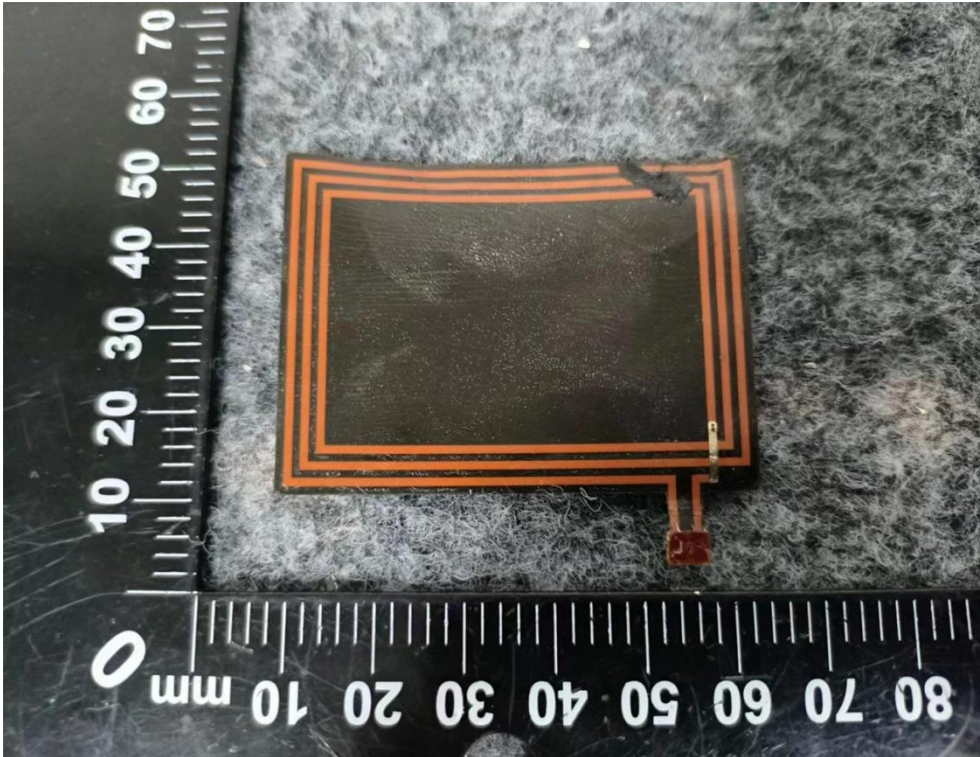


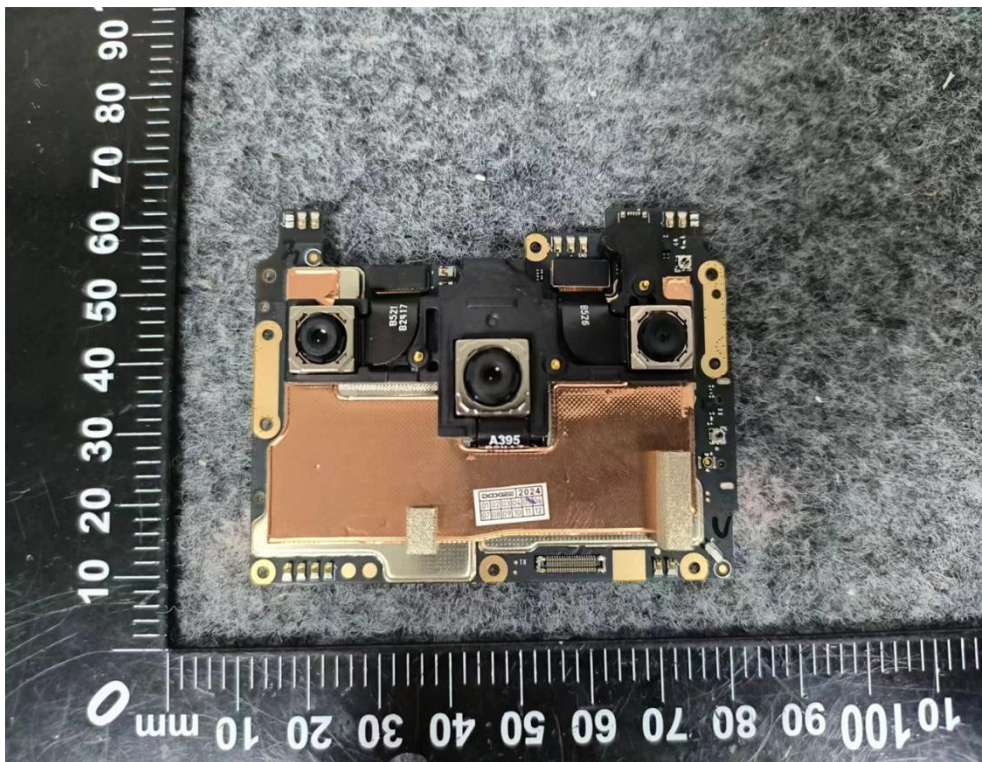
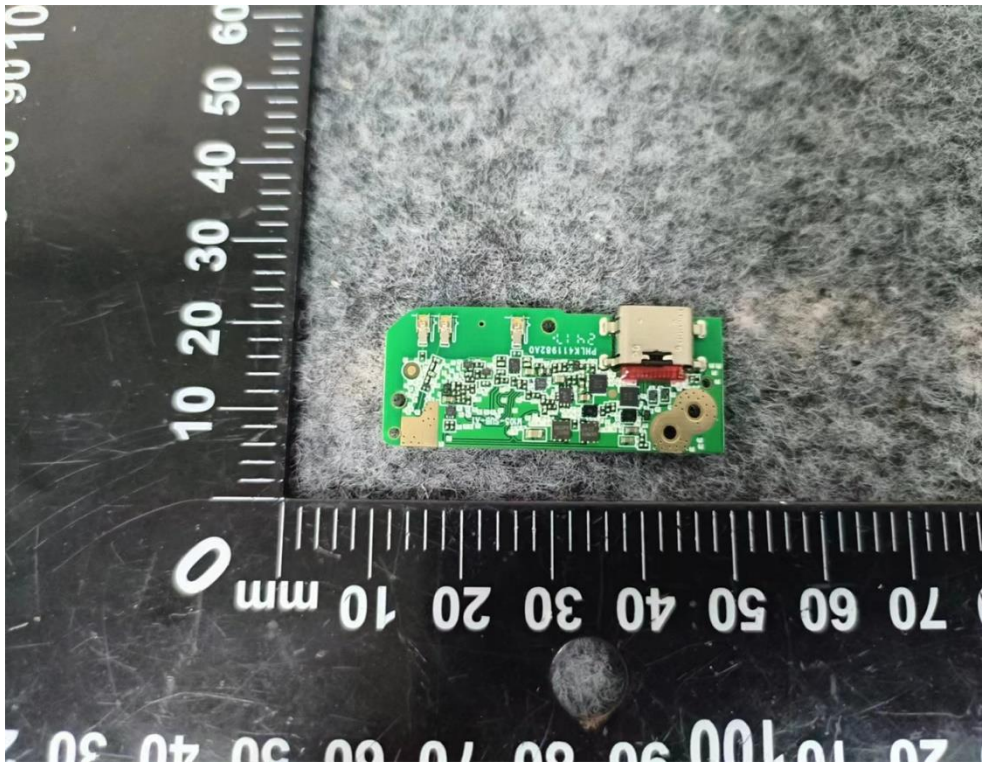


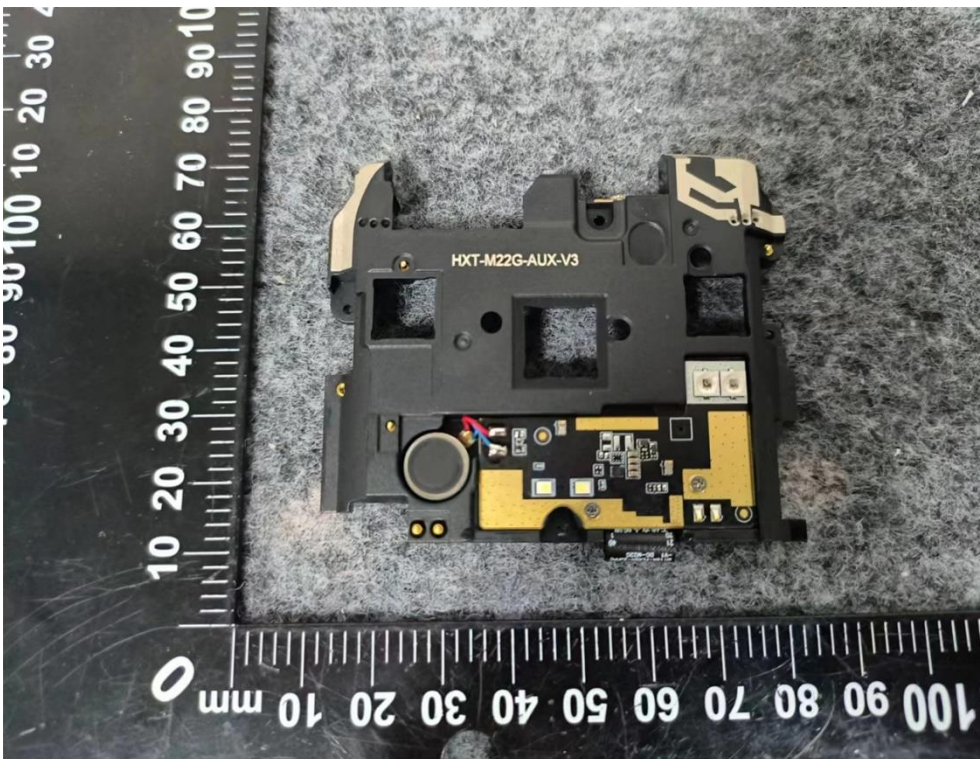
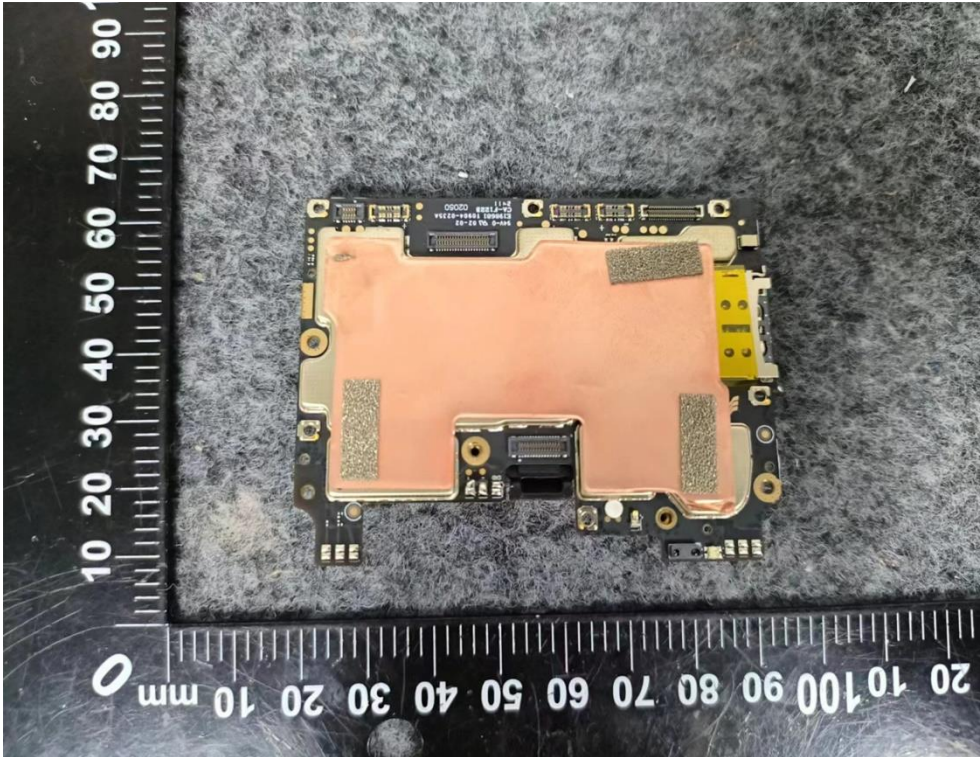


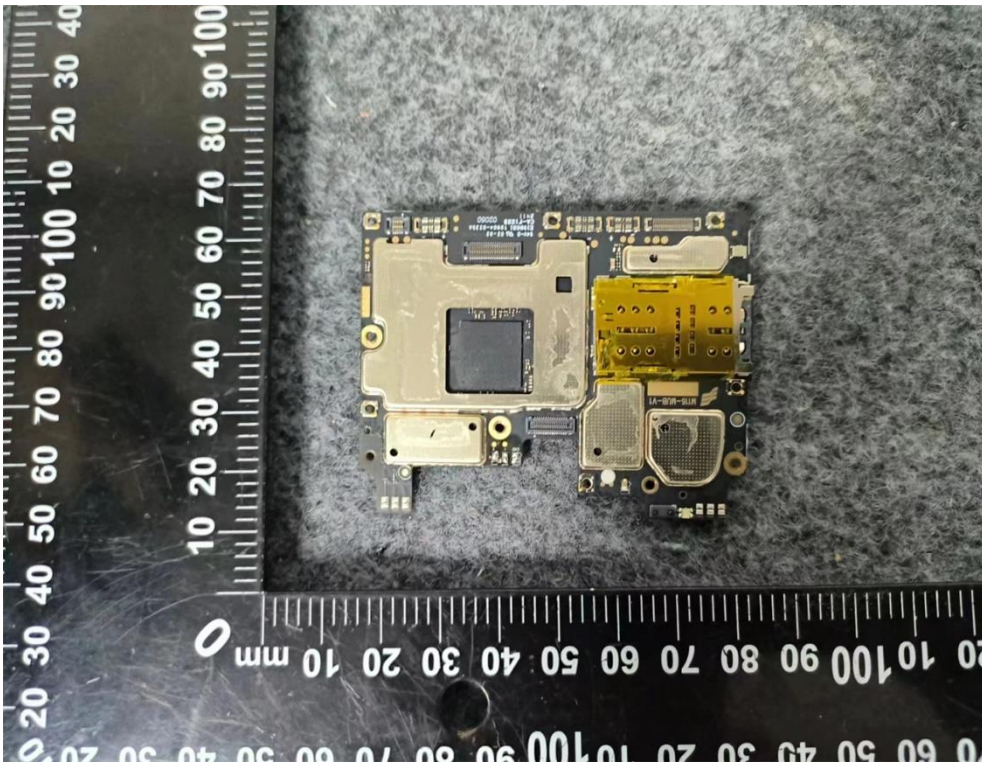
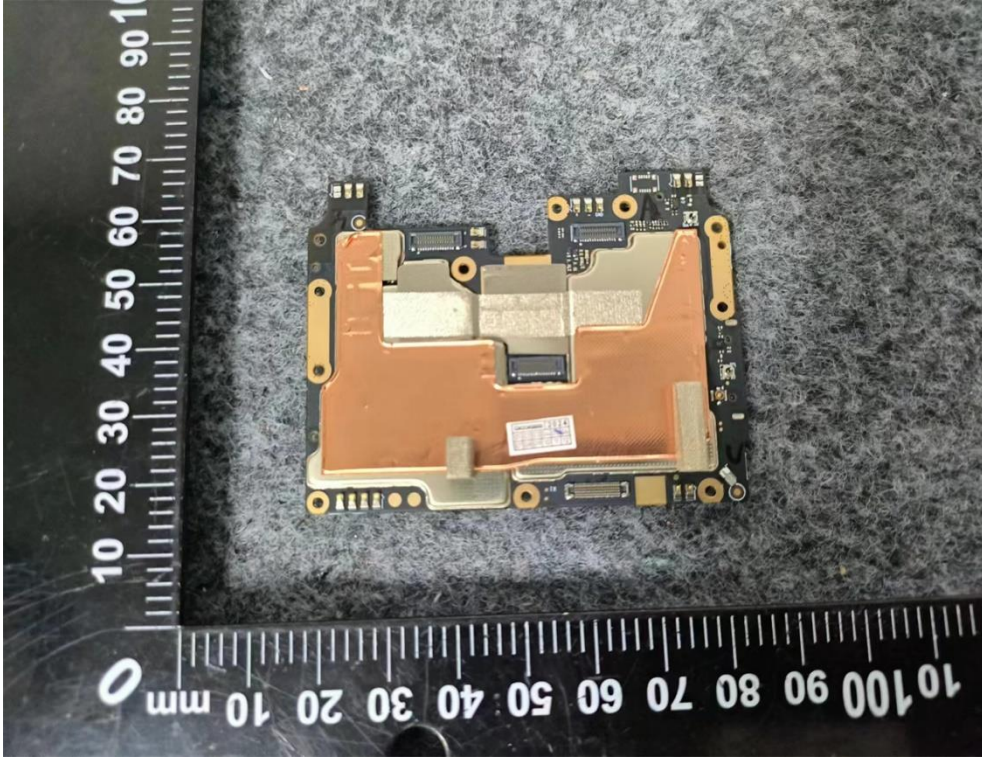


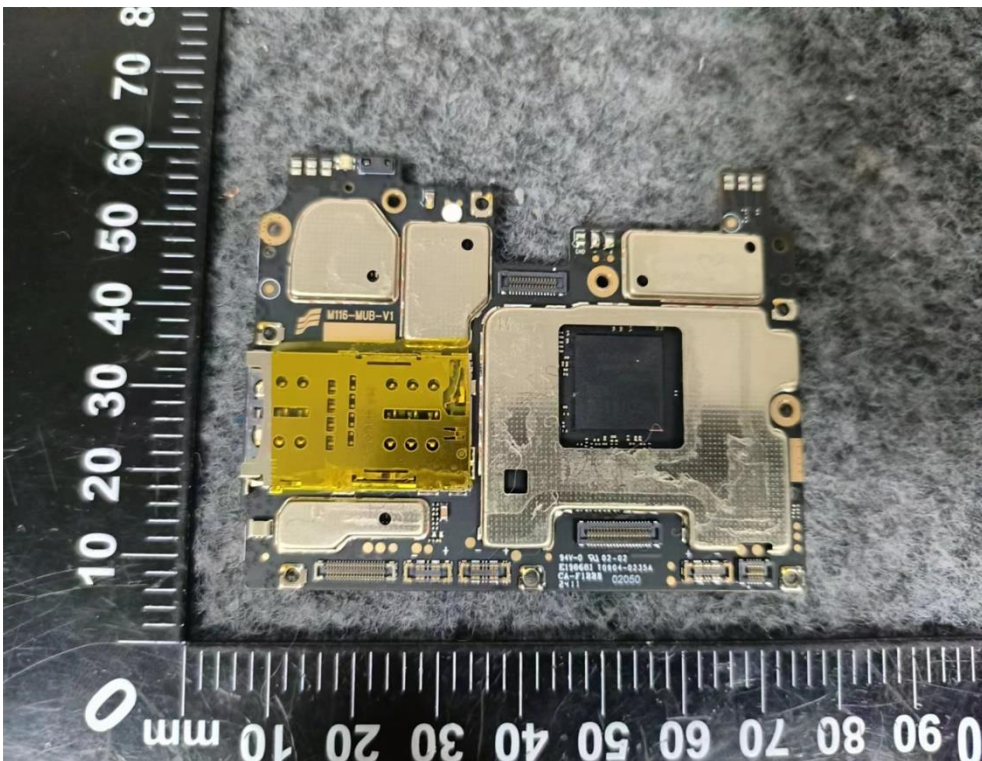
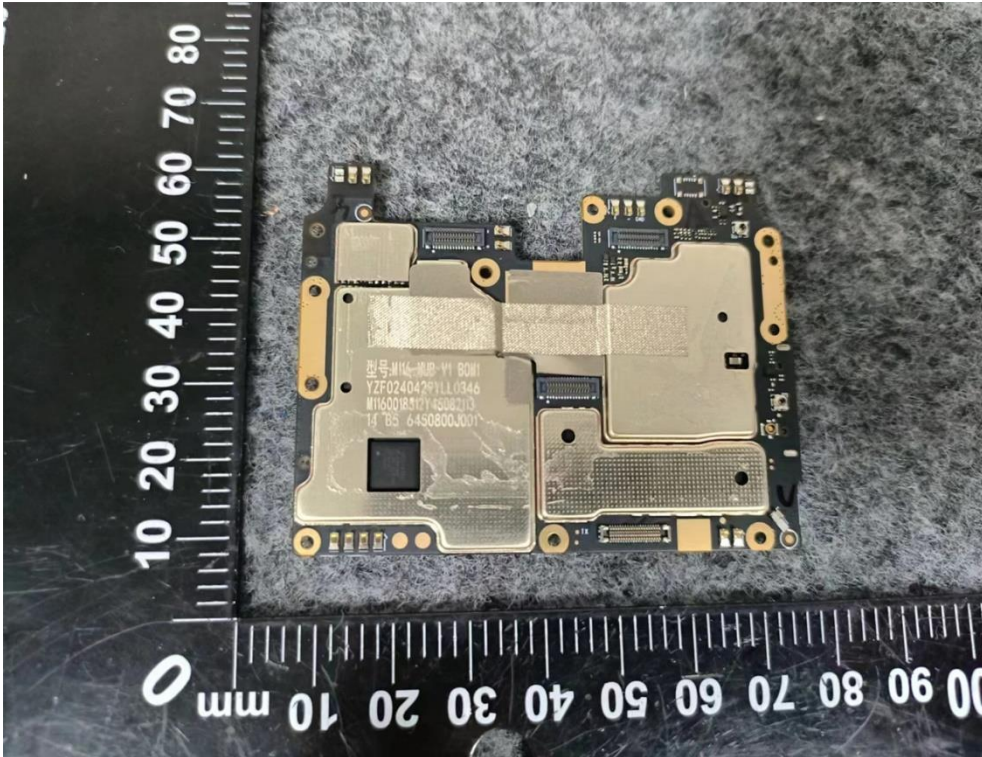


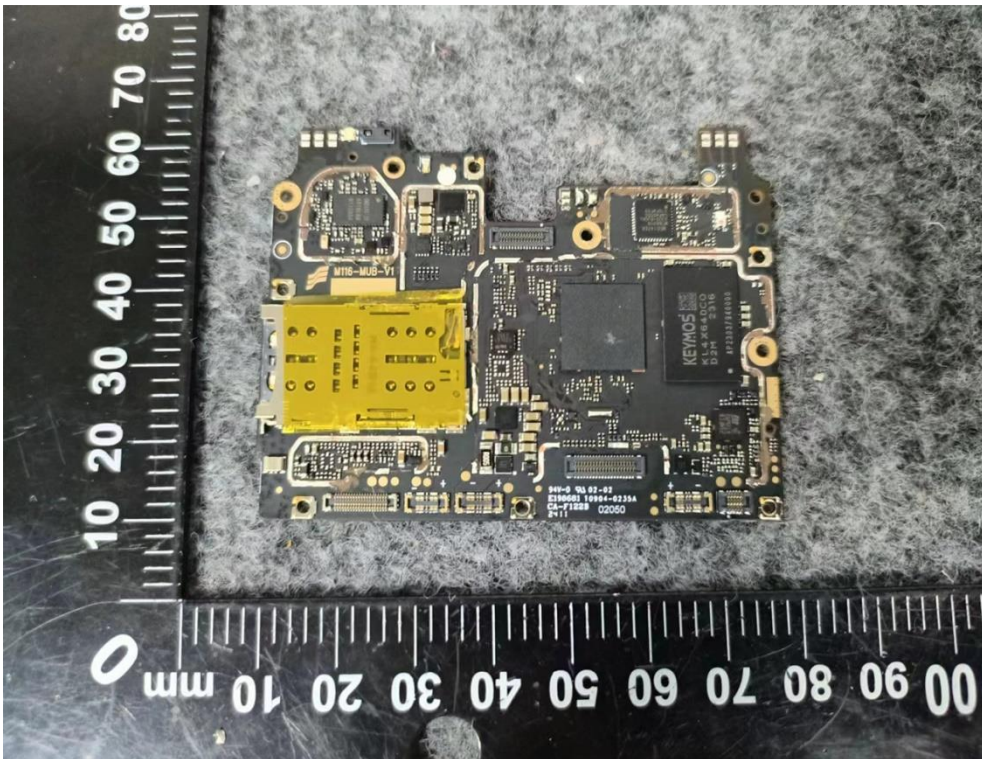
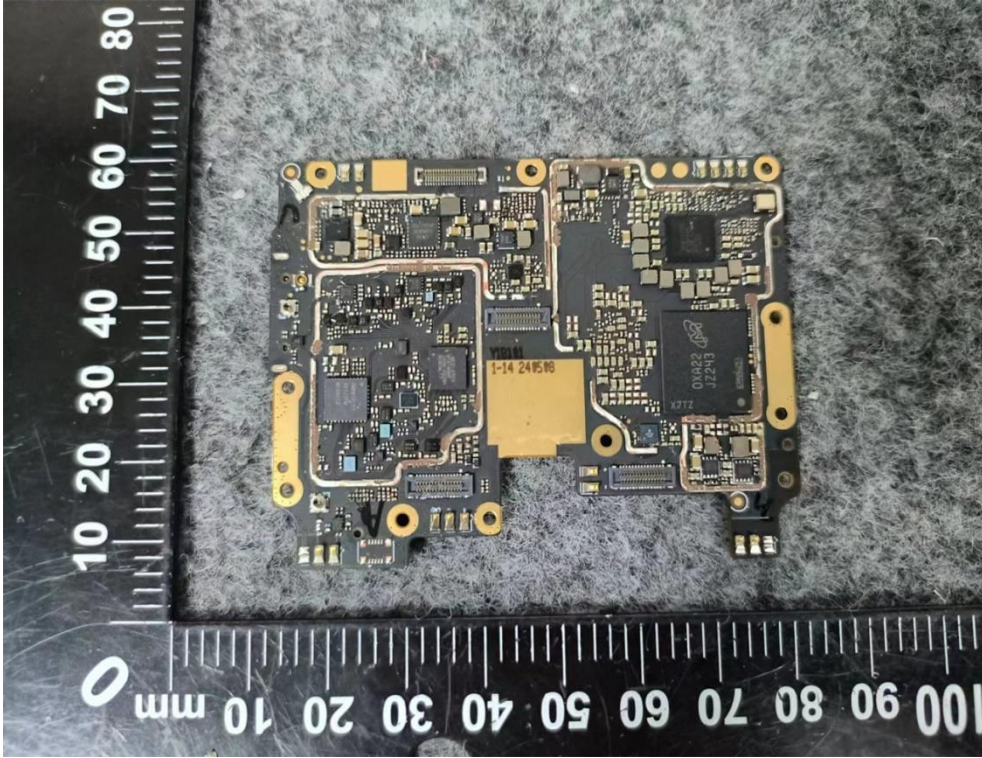












-----END OF REPORT-----