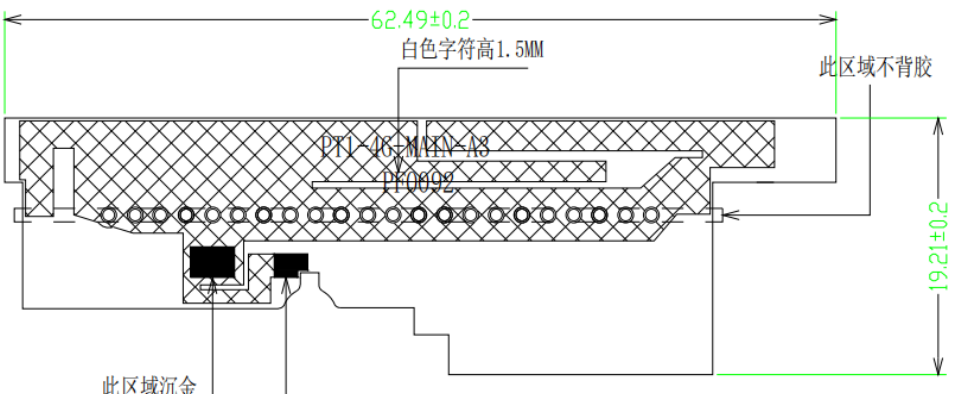
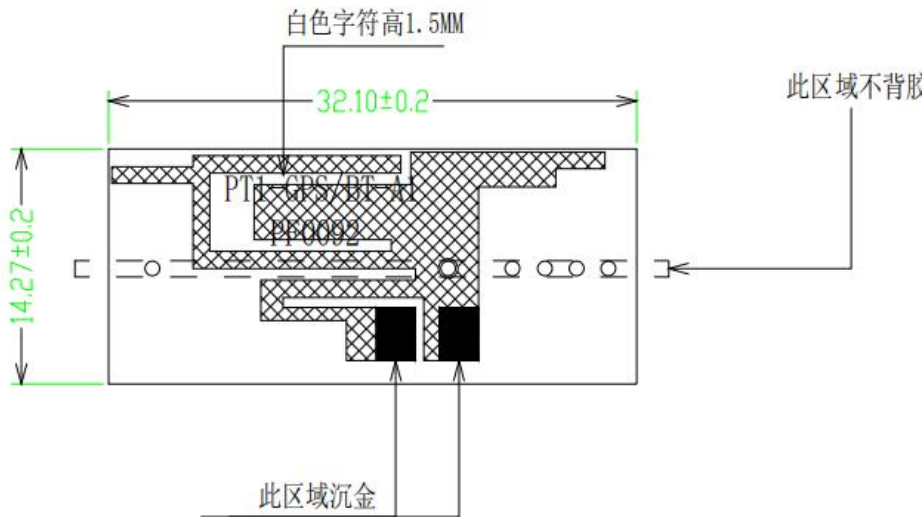
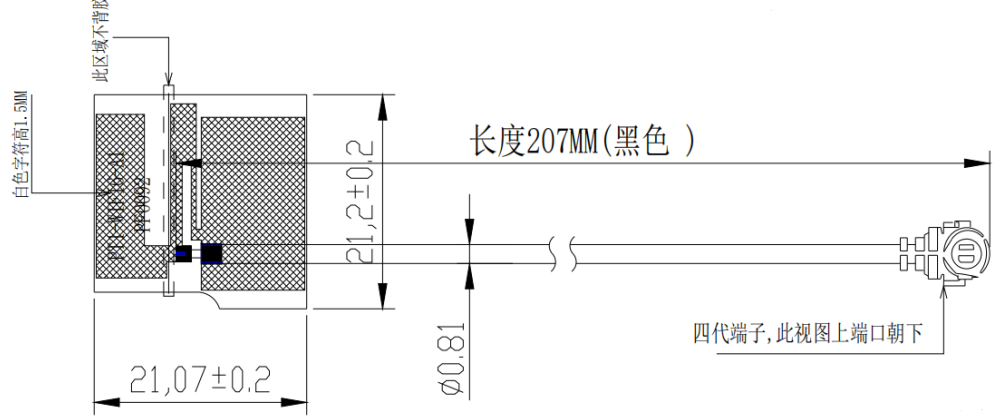


# Technical Specification

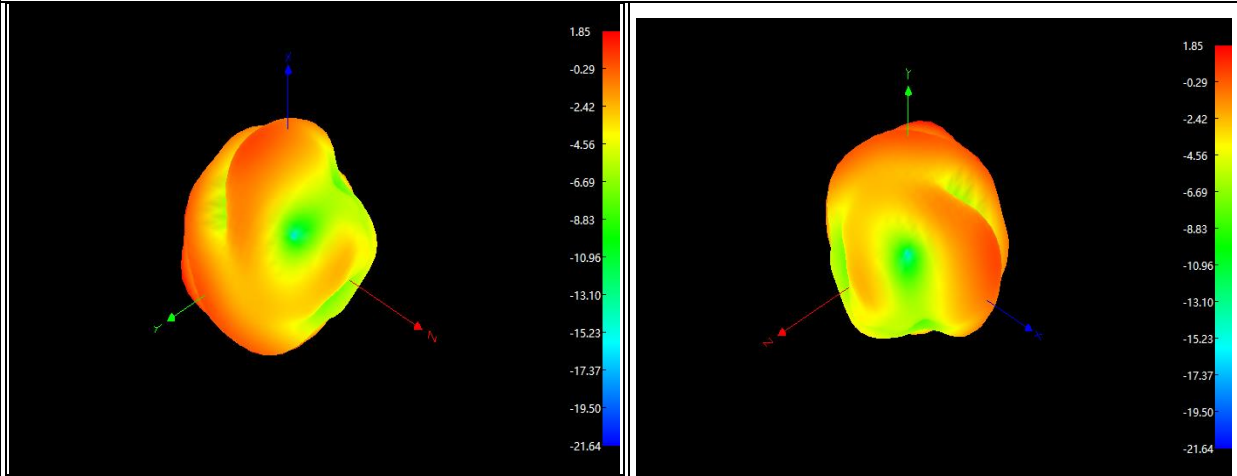
Antenna Mode	PT1	Manufactured	Shenzhen PIPA antenna design Co.,LTD.
Address	Unit F/4F, buildingA, Junxiangda, Plada, Zhongshanyuan Road, Nanshan District, Shenzhen		
Size & Picture	 <p style="text-align: center;">MAIN: GSM/WCDMA/LTE: 62.49*19.21*0.12mm PIFA</p>		
	 <p style="text-align: center;">WGB: 32.1*14.27*0.12mm PIFA</p>		
	 <p style="text-align: center;">WIFI6: 21.2*21.07*0.12mm PIFA</p>		
	<p style="text-align: center;">WIFI6: 21.2*21.07*0.12mm PIFA</p>		





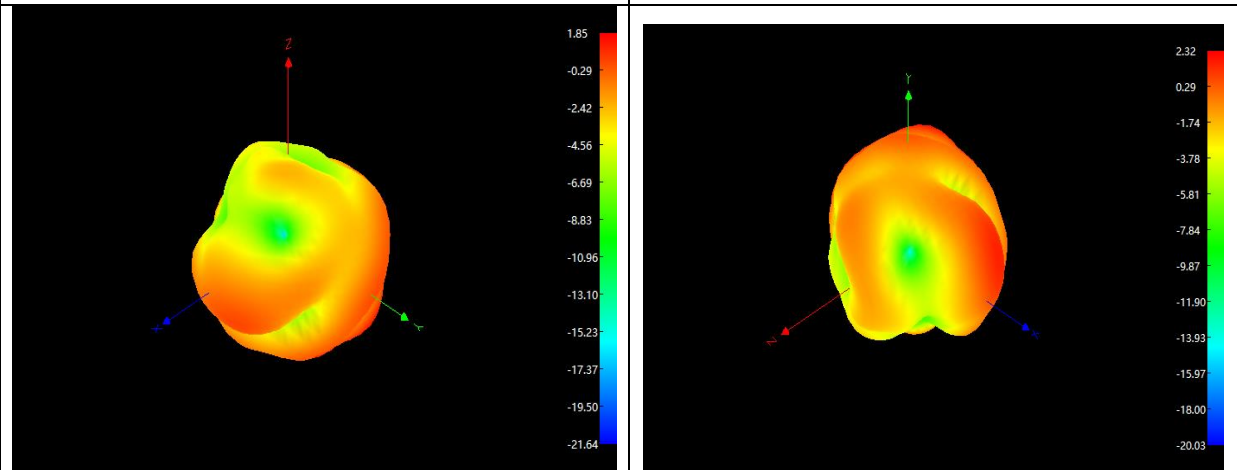
# Technical Specification

## MAIN 3-D Patten Plots



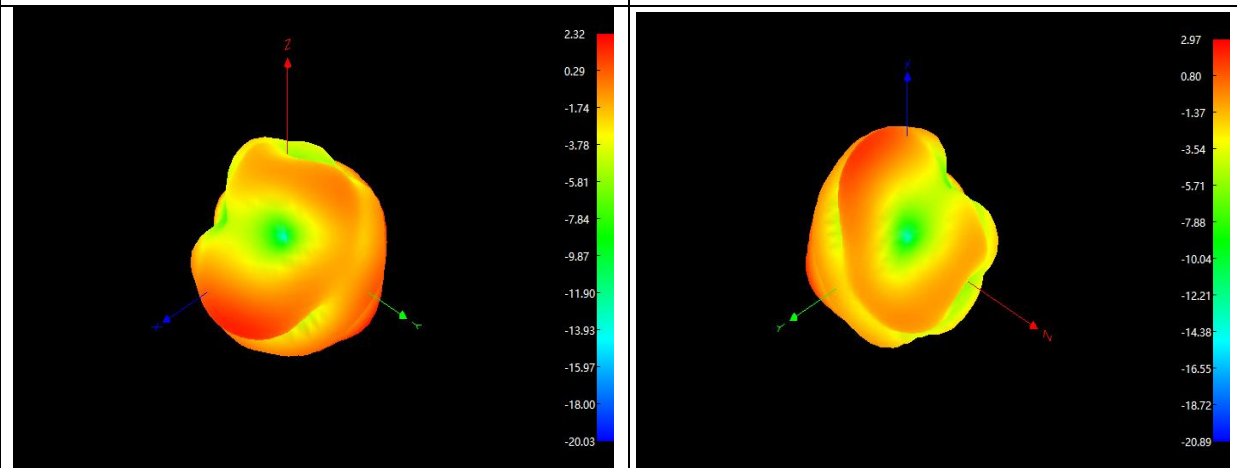
Main: 600Mhz

Main: 700Mhz



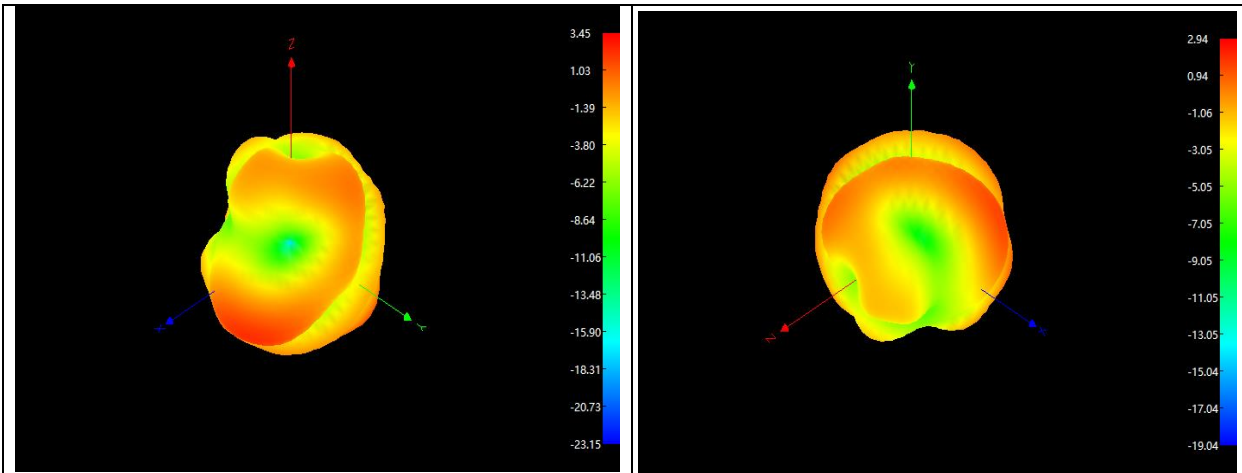
Main: 800Mhz

Main: 900Mhz



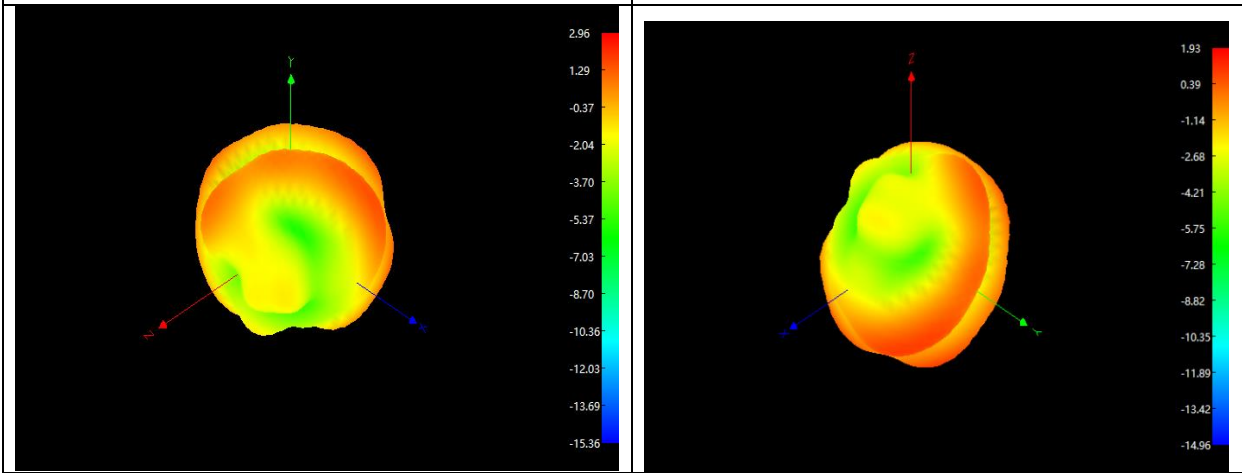
Main: 1700Mhz

Main: 1900Mhz



Main: 2100Mhz

Main: 2400Mhz

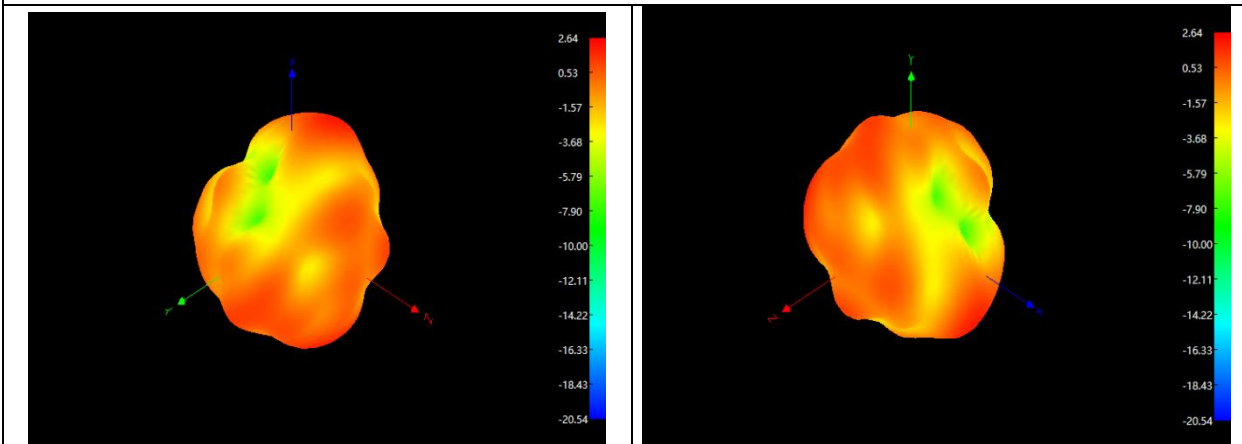


Main: 2600Mhz

Main: 2700Mhz

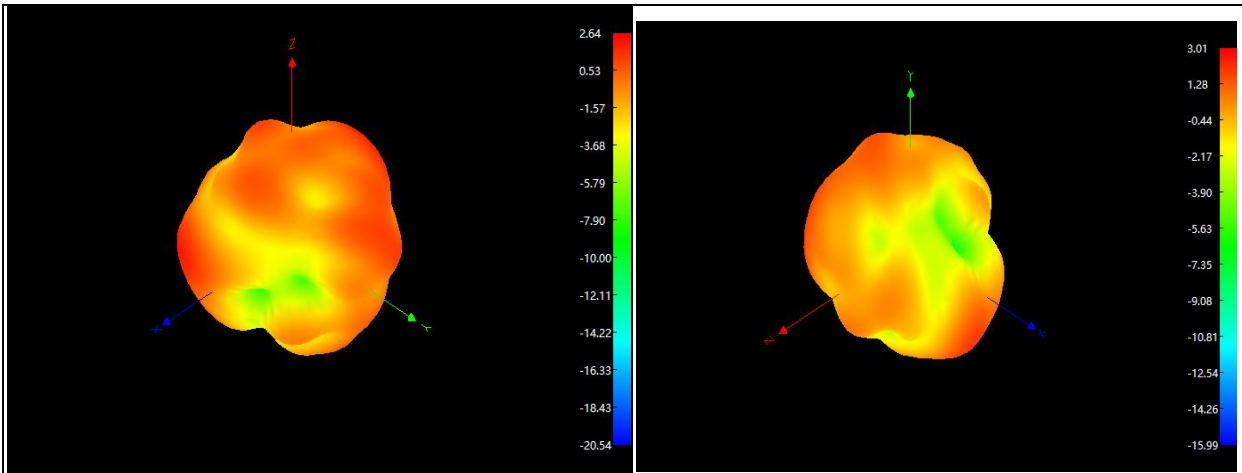
## Technical Specification

### GWB 3-D Patten Plots



GPS: 1570Mhz

BT: 2420Mhz

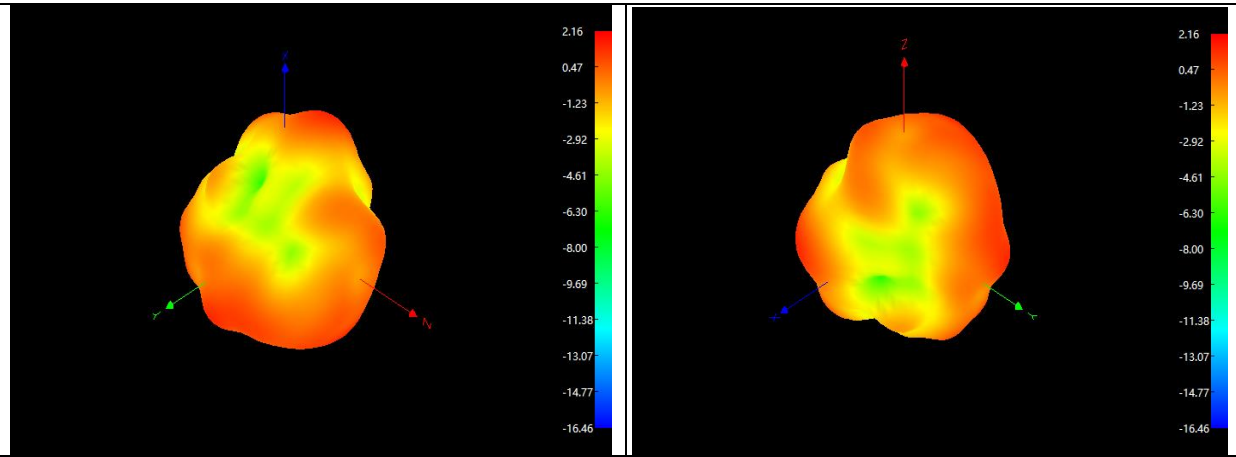


BT: 2450Mhz

BT: 2480Mhz

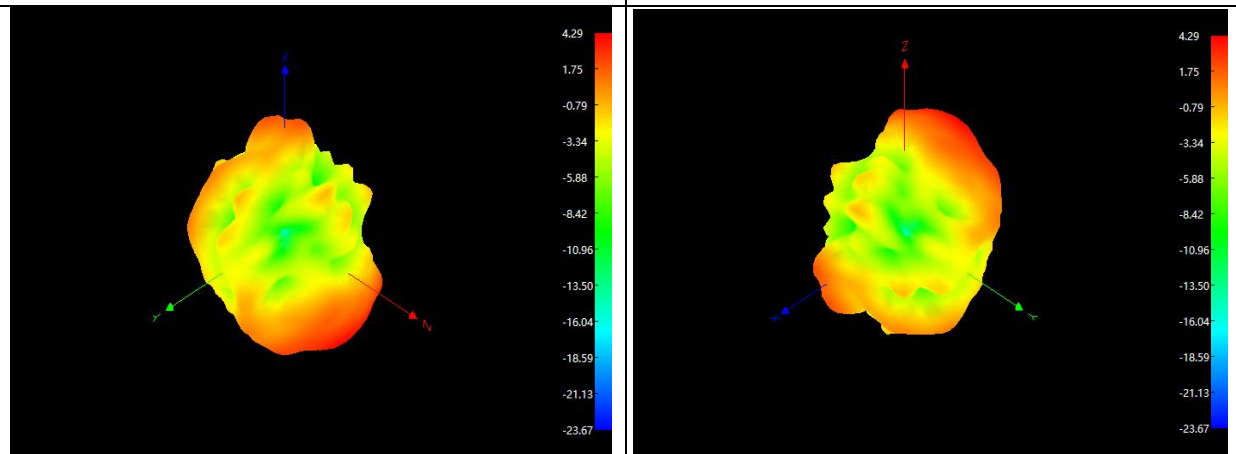
## Technical Specification

### WIFI6 3-D Patten Plots



WIFI: 2420Mhz

WIFI: 2450Mhz



WIFI: 2480Mhz

WIFI: 5500Mhz