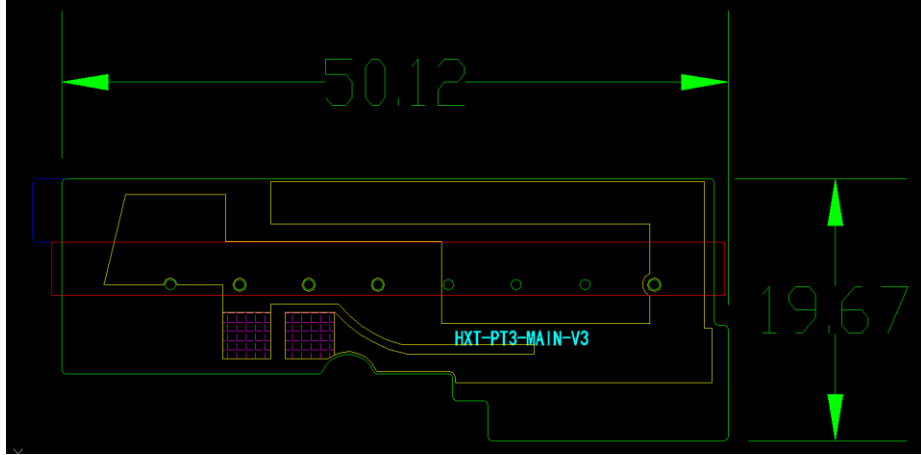


Technical Specification

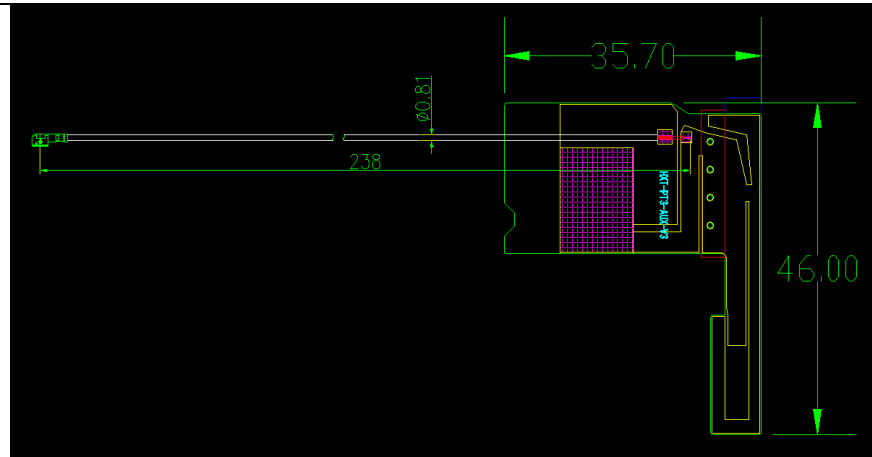
Antenna Mode	PT3	Manufactured	SHENZHEN HENGXIANGTONG ANTENNA TECHNOLOGY CO., LTD.
---------------------	-----	---------------------	---

Address 606, Building E, Enterprise Aviation Technology Innovation Research and Development Industrial Park, No. 1008, Songbai Road, Sunshine Community, Xili Street, Nanshan District, Shenzhen

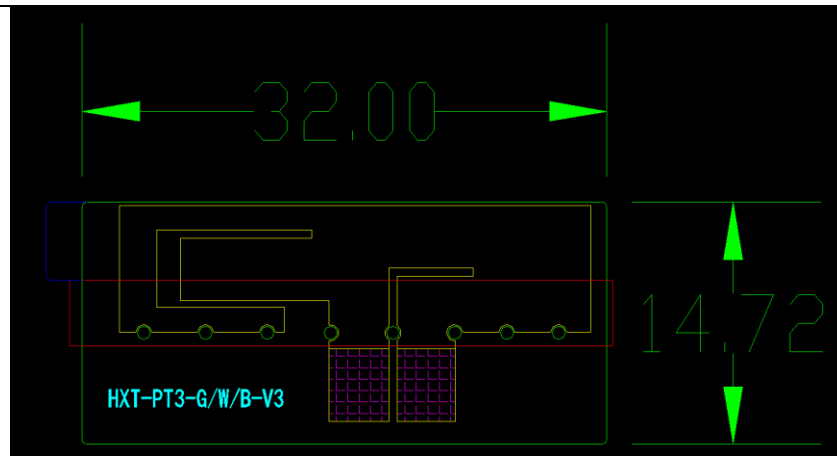
**Size
&
Picture**



GSM/WDMA/LTE Main: 50.12mm*19.67mm PIFA



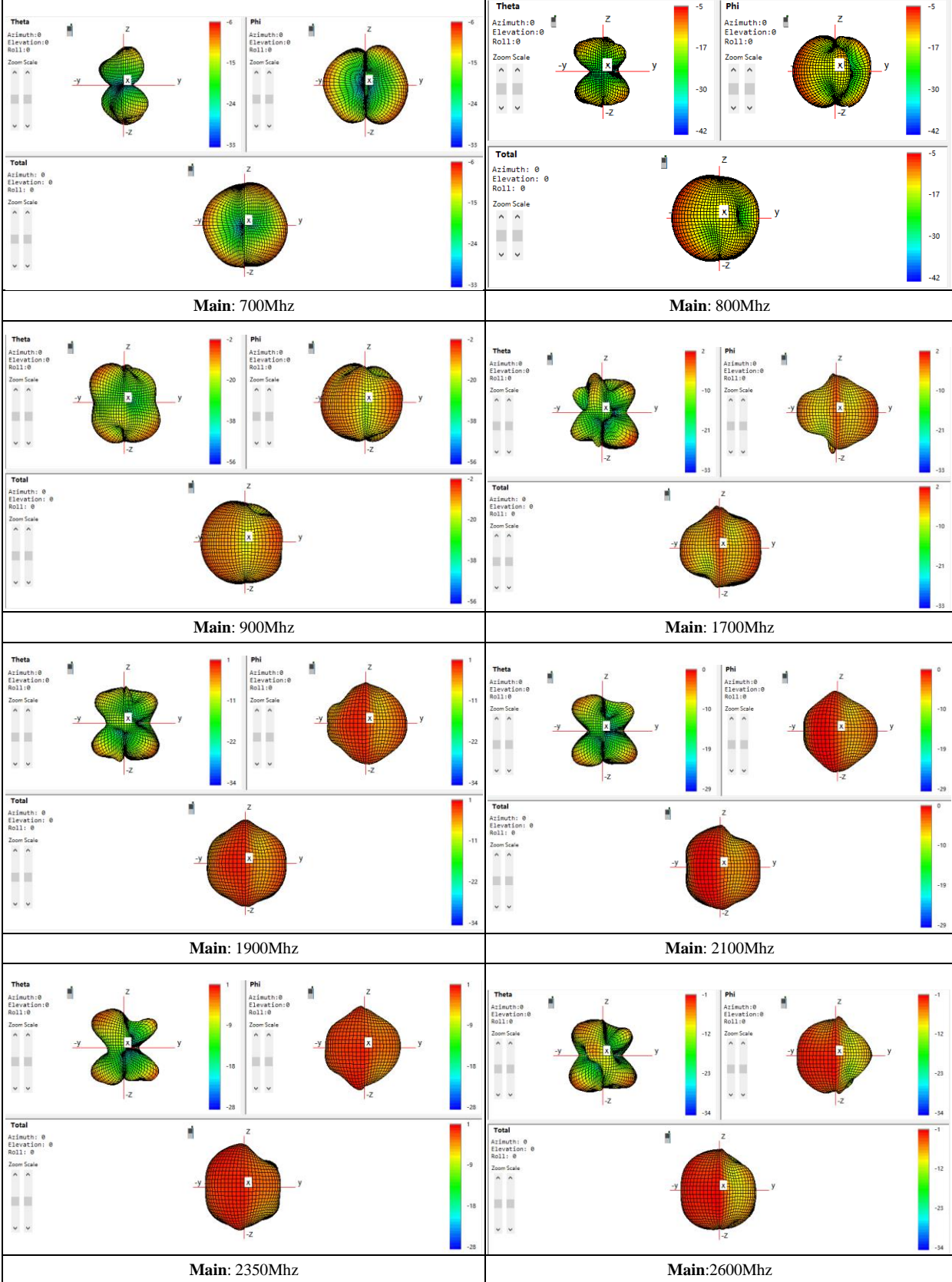
GSM/WDMA/LTE Aux: 46mm*35.7mm PIFA



G/W/B: 32mm*14.72mm PIFA

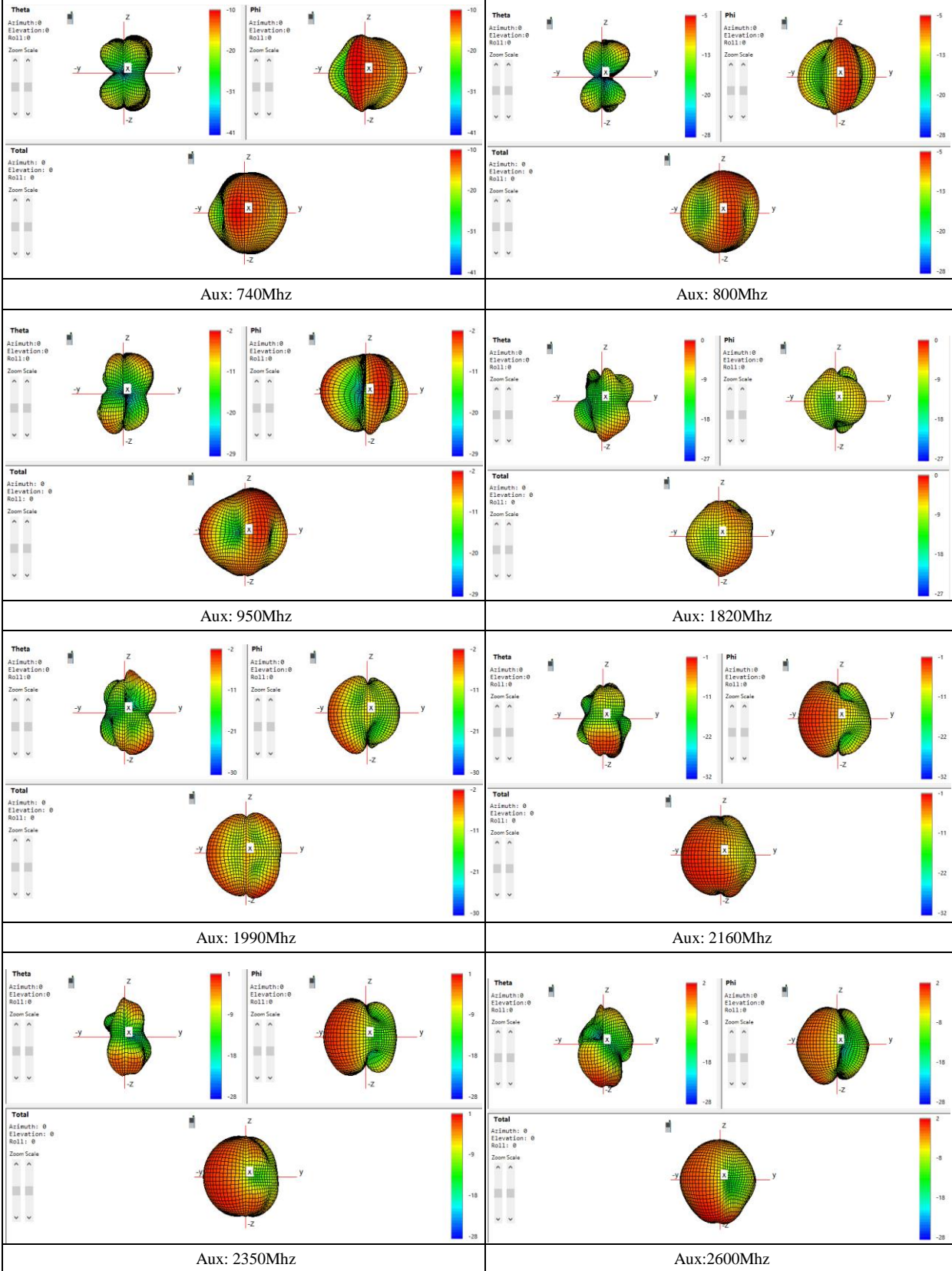
Technical Specification

Main 3-D Patten Plots



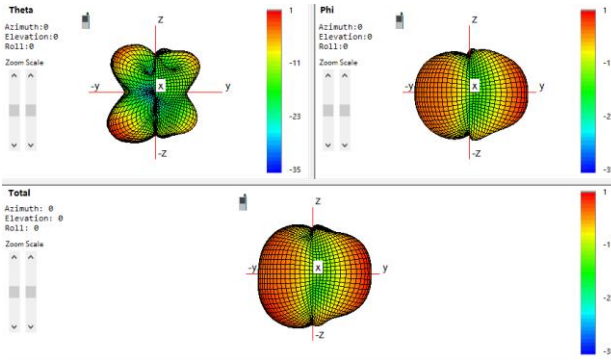
Technical Specification

Main 3-D Patten Plots

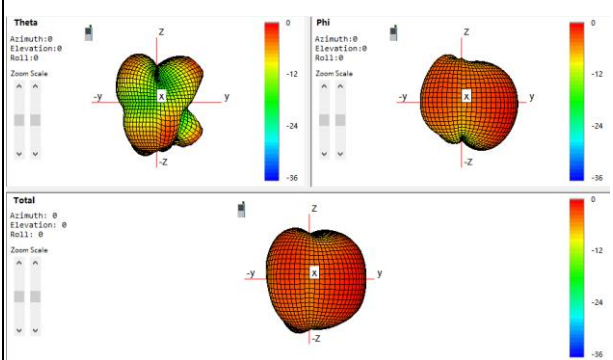


Technical Specification

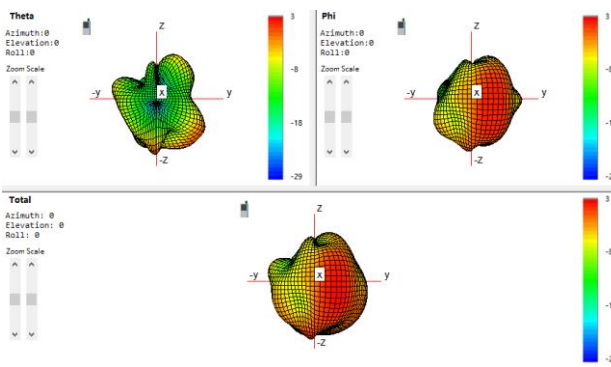
G/W/B 3-D Patten Plots



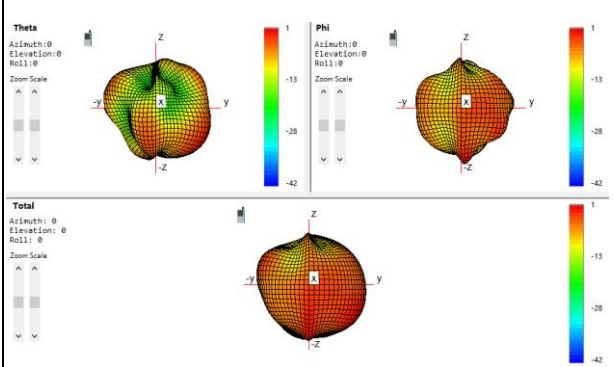
G/W/B: 1575Mhz



G/W/B: 2450Mhz



G/W/B: 5180Mhz



G/W/B: 5840Mhz