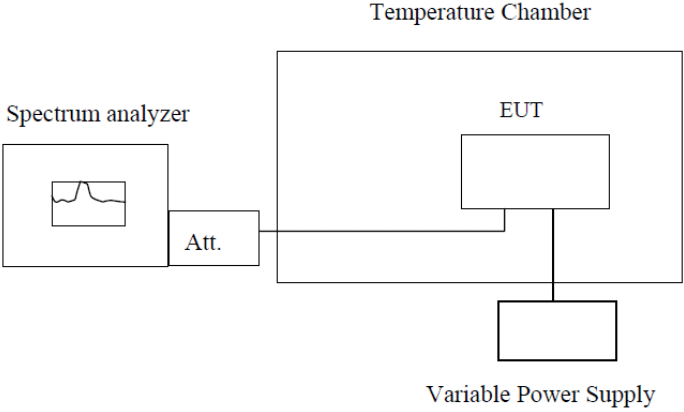


## 4.10 Frequency stability V.S. Temperature measurement

Test Requirement:	FCC Part2.1055(a)(1)(b)
Test Method:	FCC Part2.1055(a)(1)(b)
Limit:	2.5ppm
Test setup:	<div style="text-align: center;">  <p style="text-align: center;">Temperature Chamber</p> <p style="text-align: center;">Spectrum analyzer</p> <p style="text-align: center;">Att.</p> <p style="text-align: center;">EUT</p> <p style="text-align: center;">Variable Power Supply</p> </div> <p><b>Note :</b> Measurement setup for testing on Antenna connector</p>
Test procedure:	<ol style="list-style-type: none"> <li>1. The equipment under test was connected to an external DC power supply and input rated voltage.</li> <li>2. RF output was connected to a frequency counter or spectrum analyzer via feed through attenuators.</li> <li>3. The EUT was placed inside the temperature chamber.</li> <li>4. Set the spectrum analyzer RBW low enough to obtain the desired frequency resolution and measure EUT 25°C operating frequency as reference frequency.</li> <li>5. Turn EUT off and set the chamber temperature to –20°C. After the temperature stabilized for approximately 30 minutes recorded the frequency.</li> <li>6. Repeat step measure with 10°C increased per stage until the highest temperature of +50°C reached.</li> </ol>
Test Instruments:	Refer to section 3 for details
Test mode:	Refer to section 4.1 for details
Test results:	Pass

## Measurement Data

Voltage							
Band	Channel	Voltage [Vdc]	Temperature (°C)	Deviation (Hz)	Deviation (ppm)	Limit (ppm)	Verdict
GSM850	128	VN	NT	6.75	0.008190	±2.5	PASS
GSM850	128	VL	NT	8.56	0.010386	±2.5	PASS
GSM850	128	VH	NT	6.72	0.008153	±2.5	PASS
GSM850	190	VN	NT	6.26	0.007483	±2.5	PASS
GSM850	190	VL	NT	14.66	0.017523	±2.5	PASS
GSM850	190	VH	NT	7.43	0.008881	±2.5	PASS
GSM850	251	VN	NT	10.43	0.012288	±2.5	PASS
GSM850	251	VL	NT	15.95	0.018791	±2.5	PASS
GSM850	251	VH	NT	13.04	0.015363	±2.5	PASS
GPRS850	128	VN	NT	4.36	0.005290	±2.5	PASS
GPRS850	128	VL	NT	4.20	0.005096	±2.5	PASS
GPRS850	128	VH	NT	8.72	0.010580	±2.5	PASS
GPRS850	190	VN	NT	12.75	0.015240	±2.5	PASS
GPRS850	190	VL	NT	9.40	0.011236	±2.5	PASS
GPRS850	190	VH	NT	17.24	0.020607	±2.5	PASS
GPRS850	251	VN	NT	12.62	0.014868	±2.5	PASS
GPRS850	251	VL	NT	11.91	0.014032	±2.5	PASS
GPRS850	251	VH	NT	8.85	0.010426	±2.5	PASS
EGPRS850	128	VN	NT	16.66	0.020214	±2.5	PASS
EGPRS850	128	VL	NT	15.01	0.018212	±2.5	PASS
EGPRS850	128	VH	NT	13.72	0.016646	±2.5	PASS
EGPRS850	190	VN	NT	11.66	0.013937	±2.5	PASS
EGPRS850	190	VL	NT	9.30	0.011116	±2.5	PASS
EGPRS850	190	VH	NT	16.30	0.019484	±2.5	PASS
EGPRS850	251	VN	NT	16.72	0.019698	±2.5	PASS
EGPRS850	251	VL	NT	6.84	0.008058	±2.5	PASS
EGPRS850	251	VH	NT	7.91	0.009319	±2.5	PASS

Temperature							
Band	Channel	Voltage [Vdc]	Temperature (°C)	Deviation (Hz)	Deviation (ppm)	Limit (ppm)	Verdict
GSM850	128	NV	-30	8.36	0.010143	±2.5	PASS
GSM850	128	NV	-20	3.29	0.003992	±2.5	PASS
GSM850	128	NV	-10	6.75	0.008190	±2.5	PASS
GSM850	128	NV	0	9.30	0.011284	±2.5	PASS

GSM850	128	NV	10	4.52	0.005484	±2.5	PASS
GSM850	128	NV	20	4.36	0.005290	±2.5	PASS
GSM850	128	NV	30	7.59	0.009209	±2.5	PASS
GSM850	128	NV	40	8.75	0.010616	±2.5	PASS
GSM850	128	NV	50	10.98	0.013322	±2.5	PASS
GSM850	190	NV	-30	3.03	0.003622	±2.5	PASS
GSM850	190	NV	-20	18.66	0.022305	±2.5	PASS
GSM850	190	NV	-10	2.81	0.003359	±2.5	PASS
GSM850	190	NV	0	11.69	0.013973	±2.5	PASS
GSM850	190	NV	10	10.65	0.012730	±2.5	PASS
GSM850	190	NV	20	10.23	0.012228	±2.5	PASS
GSM850	190	NV	30	8.49	0.010148	±2.5	PASS
GSM850	190	NV	40	13.37	0.015981	±2.5	PASS
GSM850	190	NV	50	12.62	0.015085	±2.5	PASS
GSM850	251	NV	-30	9.94	0.011711	±2.5	PASS
GSM850	251	NV	-20	12.24	0.014420	±2.5	PASS
GSM850	251	NV	-10	9.40	0.011074	±2.5	PASS
GSM850	251	NV	0	7.65	0.009013	±2.5	PASS
GSM850	251	NV	10	5.07	0.005973	±2.5	PASS
GSM850	251	NV	20	6.55	0.007717	±2.5	PASS
GSM850	251	NV	30	8.23	0.009696	±2.5	PASS
GSM850	251	NV	40	4.20	0.004948	±2.5	PASS
GSM850	251	NV	50	12.11	0.014267	±2.5	PASS
GPRS850	128	NV	-30	4.62	0.005605	±2.5	PASS
GPRS850	128	NV	-20	5.23	0.006346	±2.5	PASS
GPRS850	128	NV	-10	5.91	0.007171	±2.5	PASS
GPRS850	128	NV	0	4.29	0.005205	±2.5	PASS
GPRS850	128	NV	10	9.88	0.011987	±2.5	PASS
GPRS850	128	NV	20	8.52	0.010337	±2.5	PASS
GPRS850	128	NV	30	6.75	0.008190	±2.5	PASS
GPRS850	128	NV	40	17.53	0.021269	±2.5	PASS
GPRS850	128	NV	50	9.52	0.011551	±2.5	PASS
GPRS850	190	NV	-30	13.46	0.016089	±2.5	PASS
GPRS850	190	NV	-20	10.07	0.012037	±2.5	PASS
GPRS850	190	NV	-10	10.40	0.012431	±2.5	PASS
GPRS850	190	NV	0	13.40	0.016017	±2.5	PASS
GPRS850	190	NV	10	11.14	0.013316	±2.5	PASS

GPRS850	190	NV	20	9.69	0.011583	±2.5	PASS
GPRS850	190	NV	30	11.59	0.013854	±2.5	PASS
GPRS850	190	NV	40	9.85	0.011774	±2.5	PASS
GPRS850	190	NV	50	9.62	0.011499	±2.5	PASS
GPRS850	251	NV	-30	4.68	0.005514	±2.5	PASS
GPRS850	251	NV	-20	13.01	0.015328	±2.5	PASS
GPRS850	251	NV	-10	6.88	0.008106	±2.5	PASS
GPRS850	251	NV	0	8.01	0.009437	±2.5	PASS
GPRS850	251	NV	10	11.46	0.013501	±2.5	PASS
GPRS850	251	NV	20	12.30	0.014491	±2.5	PASS
GPRS850	251	NV	30	7.55	0.008895	±2.5	PASS
GPRS850	251	NV	40	9.46	0.011145	±2.5	PASS
GPRS850	251	NV	50	10.14	0.011946	±2.5	PASS
EGPRS850	128	NV	-30	12.04	0.014608	±2.5	PASS
EGPRS850	128	NV	-20	13.69	0.016610	±2.5	PASS
EGPRS850	128	NV	-10	15.59	0.018915	±2.5	PASS
EGPRS850	128	NV	0	16.69	0.020250	±2.5	PASS
EGPRS850	128	NV	10	11.11	0.013480	±2.5	PASS
EGPRS850	128	NV	20	13.33	0.016173	±2.5	PASS
EGPRS850	128	NV	30	9.33	0.011320	±2.5	PASS
EGPRS850	128	NV	40	13.27	0.016100	±2.5	PASS
EGPRS850	128	NV	50	11.69	0.014183	±2.5	PASS
EGPRS850	190	NV	-30	13.50	0.016137	±2.5	PASS
EGPRS850	190	NV	-20	12.85	0.015360	±2.5	PASS
EGPRS850	190	NV	-10	11.40	0.013627	±2.5	PASS
EGPRS850	190	NV	0	8.20	0.009802	±2.5	PASS
EGPRS850	190	NV	10	12.30	0.014702	±2.5	PASS
EGPRS850	190	NV	20	8.39	0.010029	±2.5	PASS
EGPRS850	190	NV	30	8.10	0.009682	±2.5	PASS
EGPRS850	190	NV	40	10.59	0.012658	±2.5	PASS
EGPRS850	190	NV	50	8.81	0.010531	±2.5	PASS
EGPRS850	251	NV	-30	3.91	0.004607	±2.5	PASS
EGPRS850	251	NV	-20	8.30	0.009779	±2.5	PASS
EGPRS850	251	NV	-10	10.04	0.011828	±2.5	PASS
EGPRS850	251	NV	0	8.75	0.010309	±2.5	PASS
EGPRS850	251	NV	10	8.36	0.009849	±2.5	PASS
EGPRS850	251	NV	20	10.17	0.011982	±2.5	PASS

EGPRS850	251	NV	30	8.43	0.009932	±2.5	PASS
EGPRS850	251	NV	40	10.27	0.012099	±2.5	PASS
EGPRS850	251	NV	50	6.97	0.008212	±2.5	PASS

Voltage							
Band	Channel	Voltage [Vdc]	Temperature (°C)	Deviation (Hz)	Deviation (ppm)	Limit (ppm)	Verdict
GSM1900	512	VN	NT	9.40	0.005081	±2.5	PASS
GSM1900	512	VL	NT	6.72	0.003632	±2.5	PASS
GSM1900	512	VH	NT	8.94	0.004832	±2.5	PASS
GSM1900	661	VN	NT	12.24	0.006511	±2.5	PASS
GSM1900	661	VL	NT	14.37	0.007644	±2.5	PASS
GSM1900	661	VH	NT	21.02	0.011181	±2.5	PASS
GSM1900	810	VN	NT	16.37	0.008572	±2.5	PASS
GSM1900	810	VL	NT	-4.16	-0.002178	±2.5	PASS
GSM1900	810	VH	NT	11.36	0.005948	±2.5	PASS
GPRS1900	512	VN	NT	23.86	0.012896	±2.5	PASS
GPRS1900	512	VL	NT	16.24	0.008777	±2.5	PASS
GPRS1900	512	VH	NT	23.15	0.012512	±2.5	PASS
GPRS1900	661	VN	NT	2.26	0.001202	±2.5	PASS
GPRS1900	661	VL	NT	13.01	0.006920	±2.5	PASS
GPRS1900	661	VH	NT	19.44	0.010340	±2.5	PASS
GPRS1900	810	VN	NT	12.20	0.006388	±2.5	PASS
GPRS1900	810	VL	NT	22.73	0.011902	±2.5	PASS
GPRS1900	810	VH	NT	25.70	0.013457	±2.5	PASS
EGPRS1900	512	VN	NT	2.03	0.001097	±2.5	PASS
EGPRS1900	512	VL	NT	18.66	0.010085	±2.5	PASS
EGPRS1900	512	VH	NT	15.50	0.008377	±2.5	PASS
EGPRS1900	661	VN	NT	7.23	0.003846	±2.5	PASS
EGPRS1900	661	VL	NT	9.17	0.004878	±2.5	PASS
EGPRS1900	661	VH	NT	9.33	0.004963	±2.5	PASS
EGPRS1900	810	VN	NT	20.15	0.010551	±2.5	PASS
EGPRS1900	810	VL	NT	15.50	0.008116	±2.5	PASS
EGPRS1900	810	VH	NT	14.98	0.007844	±2.5	PASS

Temperature							
Band	Channel	Voltage [Vdc]	Temperature (°C)	Deviation (Hz)	Deviation (ppm)	Limit (ppm)	Verdict
GSM1900	512	NV	-30	10.78	0.005826	±2.5	PASS
GSM1900	512	NV	-20	15.08	0.008150	±2.5	PASS
GSM1900	512	NV	-10	5.81	0.003140	±2.5	PASS
GSM1900	512	NV	0	10.85	0.005864	±2.5	PASS

GSM1900	512	NV	10	6.26	0.003383	±2.5	PASS
GSM1900	512	NV	20	3.39	0.001832	±2.5	PASS
GSM1900	512	NV	30	14.46	0.007815	±2.5	PASS
GSM1900	512	NV	40	14.21	0.007680	±2.5	PASS
GSM1900	512	NV	50	8.52	0.004605	±2.5	PASS
GSM1900	661	NV	-30	15.37	0.008176	±2.5	PASS
GSM1900	661	NV	-20	18.24	0.009702	±2.5	PASS
GSM1900	661	NV	-10	21.57	0.011473	±2.5	PASS
GSM1900	661	NV	0	24.15	0.012846	±2.5	PASS
GSM1900	661	NV	10	14.98	0.007968	±2.5	PASS
GSM1900	661	NV	20	23.54	0.012521	±2.5	PASS
GSM1900	661	NV	30	16.98	0.009032	±2.5	PASS
GSM1900	661	NV	40	9.85	0.005239	±2.5	PASS
GSM1900	661	NV	50	18.92	0.010064	±2.5	PASS
GSM1900	810	NV	-30	18.05	0.009451	±2.5	PASS
GSM1900	810	NV	-20	19.69	0.010310	±2.5	PASS
GSM1900	810	NV	-10	10.27	0.005378	±2.5	PASS
GSM1900	810	NV	0	7.75	0.004058	±2.5	PASS
GSM1900	810	NV	10	-2.26	-0.001183	±2.5	PASS
GSM1900	810	NV	20	5.97	0.003126	±2.5	PASS
GSM1900	810	NV	30	4.91	0.002571	±2.5	PASS
GSM1900	810	NV	40	12.11	0.006341	±2.5	PASS
GSM1900	810	NV	50	17.63	0.009231	±2.5	PASS
GPRS1900	512	NV	-30	15.05	0.008134	±2.5	PASS
GPRS1900	512	NV	-20	16.18	0.008745	±2.5	PASS
GPRS1900	512	NV	-10	15.05	0.008134	±2.5	PASS
GPRS1900	512	NV	0	17.14	0.009264	±2.5	PASS
GPRS1900	512	NV	10	10.65	0.005756	±2.5	PASS
GPRS1900	512	NV	20	12.43	0.006718	±2.5	PASS
GPRS1900	512	NV	30	20.37	0.011010	±2.5	PASS
GPRS1900	512	NV	40	17.98	0.009718	±2.5	PASS
GPRS1900	512	NV	50	15.37	0.008307	±2.5	PASS
GPRS1900	661	NV	-30	10.27	0.005463	±2.5	PASS
GPRS1900	661	NV	-20	8.14	0.004330	±2.5	PASS
GPRS1900	661	NV	-10	12.14	0.006457	±2.5	PASS
GPRS1900	661	NV	0	10.36	0.005511	±2.5	PASS
GPRS1900	661	NV	10	10.40	0.005532	±2.5	PASS

GPRS1900	661	NV	20	2.36	0.001255	±2.5	PASS
GPRS1900	661	NV	30	7.20	0.003830	±2.5	PASS
GPRS1900	661	NV	40	11.43	0.006080	±2.5	PASS
GPRS1900	661	NV	50	5.49	0.002920	±2.5	PASS
GPRS1900	810	NV	-30	10.14	0.005309	±2.5	PASS
GPRS1900	810	NV	-20	10.40	0.005446	±2.5	PASS
GPRS1900	810	NV	-10	5.91	0.003095	±2.5	PASS
GPRS1900	810	NV	0	8.10	0.004241	±2.5	PASS
GPRS1900	810	NV	10	15.43	0.008079	±2.5	PASS
GPRS1900	810	NV	20	21.41	0.011211	±2.5	PASS
GPRS1900	810	NV	30	21.08	0.011038	±2.5	PASS
GPRS1900	810	NV	40	17.05	0.008928	±2.5	PASS
GPRS1900	810	NV	50	15.56	0.008147	±2.5	PASS
EGPRS1900	512	NV	-30	13.82	0.007469	±2.5	PASS
EGPRS1900	512	NV	-20	27.31	0.014761	±2.5	PASS
EGPRS1900	512	NV	-10	11.69	0.006318	±2.5	PASS
EGPRS1900	512	NV	0	9.78	0.005286	±2.5	PASS
EGPRS1900	512	NV	10	4.10	0.002216	±2.5	PASS
EGPRS1900	512	NV	20	20.63	0.011150	±2.5	PASS
EGPRS1900	512	NV	30	16.69	0.009021	±2.5	PASS
EGPRS1900	512	NV	40	1.87	0.001011	±2.5	PASS
EGPRS1900	512	NV	50	10.07	0.005443	±2.5	PASS
EGPRS1900	661	NV	-30	13.37	0.007112	±2.5	PASS
EGPRS1900	661	NV	-20	13.43	0.007144	±2.5	PASS
EGPRS1900	661	NV	-10	13.69	0.007282	±2.5	PASS
EGPRS1900	661	NV	0	20.73	0.011027	±2.5	PASS
EGPRS1900	661	NV	10	3.23	0.001718	±2.5	PASS
EGPRS1900	661	NV	20	6.78	0.003606	±2.5	PASS
EGPRS1900	661	NV	30	7.88	0.004191	±2.5	PASS
EGPRS1900	661	NV	40	5.68	0.003021	±2.5	PASS
EGPRS1900	661	NV	50	14.40	0.007660	±2.5	PASS
EGPRS1900	810	NV	-30	-0.61	-0.000319	±2.5	PASS
EGPRS1900	810	NV	-20	0.26	0.000136	±2.5	PASS
EGPRS1900	810	NV	-10	21.05	0.011022	±2.5	PASS
EGPRS1900	810	NV	0	0.26	0.000136	±2.5	PASS
EGPRS1900	810	NV	10	4.81	0.002519	±2.5	PASS
EGPRS1900	810	NV	20	6.78	0.003550	±2.5	PASS



EGPRS1900	810	NV	30	14.79	0.007744	±2.5	PASS
EGPRS1900	810	NV	40	15.46	0.008095	±2.5	PASS
EGPRS1900	810	NV	50	10.30	0.005393	±2.5	PASS

Voltage							
Band	Channel	Voltage (Vdc)	Temperature (°C)	Deviation (Hz)	Deviation (ppm)	Limit (ppm)	Verdict
Band2	9262	VN	NT	2.22	0.001198	±2.5	PASS
Band2	9262	VL	NT	4.11	0.002219	±2.5	PASS
Band2	9262	VH	NT	-4.03	-0.002176	±2.5	PASS
Band2	9400	VN	NT	6.14	0.003266	±2.5	PASS
Band2	9400	VL	NT	4.79	0.002548	±2.5	PASS
Band2	9400	VH	NT	-4.40	-0.002340	±2.5	PASS
Band2	9538	VN	NT	2.25	0.001179	±2.5	PASS
Band2	9538	VL	NT	4.13	0.002165	±2.5	PASS
Band2	9538	VH	NT	-3.93	-0.002060	±2.5	PASS

Temperature							
Band	Channel	Voltage (Vdc)	Temperature (°C)	Deviation (Hz)	Deviation (ppm)	Limit (ppm)	Verdict
Band2	9262	NV	-30	-4.83	-0.002607	±2.5	PASS
Band2	9262	NV	-20	9.90	0.005344	±2.5	PASS
Band2	9262	NV	-10	0.30	0.000162	±2.5	PASS
Band2	9262	NV	0	-0.25	-0.000135	±2.5	PASS
Band2	9262	NV	10	-1.34	-0.000723	±2.5	PASS
Band2	9262	NV	20	5.22	0.002818	±2.5	PASS
Band2	9262	NV	30	0.85	0.000459	±2.5	PASS
Band2	9262	NV	40	4.17	0.002251	±2.5	PASS
Band2	9262	NV	50	0.41	0.000221	±2.5	PASS
Band2	9400	NV	-30	-6.70	-0.003564	±2.5	PASS
Band2	9400	NV	-20	-6.12	-0.003255	±2.5	PASS
Band2	9400	NV	-10	-5.41	-0.002878	±2.5	PASS
Band2	9400	NV	0	-2.62	-0.001394	±2.5	PASS
Band2	9400	NV	10	-3.21	-0.001707	±2.5	PASS
Band2	9400	NV	20	2.68	0.001426	±2.5	PASS
Band2	9400	NV	30	-0.34	-0.000181	±2.5	PASS
Band2	9400	NV	40	1.07	0.000569	±2.5	PASS
Band2	9400	NV	50	-0.86	-0.000457	±2.5	PASS
Band2	9538	NV	-30	5.92	0.003103	±2.5	PASS
Band2	9538	NV	-20	3.86	0.002023	±2.5	PASS
Band2	9538	NV	-10	5.28	0.002768	±2.5	PASS
Band2	9538	NV	0	-5.64	-0.002957	±2.5	PASS
Band2	9538	NV	10	-8.06	-0.004225	±2.5	PASS

Band2	9538	NV	20	7.20	0.003774	±2.5	PASS
Band2	9538	NV	30	7.00	0.003670	±2.5	PASS
Band2	9538	NV	40	-6.07	-0.003182	±2.5	PASS
Band2	9538	NV	50	-0.46	-0.000241	±2.5	PASS

Voltage								
Band	Channel	Sub Test	Voltage (Vdc)	Temperature (°C)	Deviation (Hz)	Deviation (ppm)	Limit (ppm)	Verdict
Band2	9262	1	VN	NT	8.82	0.004761	±2.5	PASS
Band2	9262	1	VL	NT	-1.62	-0.000875	±2.5	PASS
Band2	9262	1	VH	NT	-1.78	-0.000961	±2.5	PASS
Band2	9262	2	VN	NT	-0.62	-0.000335	±2.5	PASS
Band2	9262	2	VL	NT	5.97	0.003223	±2.5	PASS
Band2	9262	2	VH	NT	4.15	0.002240	±2.5	PASS
Band2	9262	3	VN	NT	7.70	0.004157	±2.5	PASS
Band2	9262	3	VL	NT	7.28	0.003930	±2.5	PASS
Band2	9262	3	VH	NT	10.42	0.005625	±2.5	PASS
Band2	9262	4	VN	NT	0.68	0.000367	±2.5	PASS
Band2	9262	4	VL	NT	12.30	0.006640	±2.5	PASS
Band2	9262	4	VH	NT	8.10	0.004373	±2.5	PASS
Band2	9400	1	VN	NT	-8.56	-0.004553	±2.5	PASS
Band2	9400	1	VL	NT	-6.33	-0.003367	±2.5	PASS
Band2	9400	1	VH	NT	-9.48	-0.005043	±2.5	PASS
Band2	9400	2	VN	NT	-6.18	-0.003287	±2.5	PASS
Band2	9400	2	VL	NT	-4.16	-0.002213	±2.5	PASS
Band2	9400	2	VH	NT	-7.98	-0.004245	±2.5	PASS
Band2	9400	3	VN	NT	0.51	0.000271	±2.5	PASS
Band2	9400	3	VL	NT	-4.54	-0.002415	±2.5	PASS
Band2	9400	3	VH	NT	-3.69	-0.001963	±2.5	PASS
Band2	9400	4	VN	NT	-2.54	-0.001351	±2.5	PASS
Band2	9400	4	VL	NT	-9.23	-0.004910	±2.5	PASS
Band2	9400	4	VH	NT	2.49	0.001324	±2.5	PASS
Band2	9538	1	VN	NT	9.06	0.004749	±2.5	PASS
Band2	9538	1	VL	NT	4.36	0.002286	±2.5	PASS
Band2	9538	1	VH	NT	-3.13	-0.001641	±2.5	PASS
Band2	9538	2	VN	NT	4.28	0.002244	±2.5	PASS
Band2	9538	2	VL	NT	2.28	0.001195	±2.5	PASS
Band2	9538	2	VH	NT	6.42	0.003365	±2.5	PASS

Band2	9538	3	VN	NT	-10.21	-0.005352	±2.5	PASS
Band2	9538	3	VL	NT	-5.89	-0.003088	±2.5	PASS
Band2	9538	3	VH	NT	-7.62	-0.003995	±2.5	PASS
Band2	9538	4	VN	NT	-1.77	-0.000928	±2.5	PASS
Band2	9538	4	VL	NT	4.13	0.002165	±2.5	PASS
Band2	9538	4	VH	NT	-1.70	-0.000891	±2.5	PASS

Temperature								
Band	Channel	Sub Test	Voltage (Vdc)	Temperature (°C)	Deviation (Hz)	Deviation (ppm)	Limit (ppm)	Verdict
Band2	9262	1	NV	-30	4.68	0.002526	±2.5	PASS
Band2	9262	1	NV	-20	1.04	0.000561	±2.5	PASS
Band2	9262	1	NV	-10	-3.29	-0.001776	±2.5	PASS
Band2	9262	1	NV	0	-2.90	-0.001566	±2.5	PASS
Band2	9262	1	NV	10	2.44	0.001317	±2.5	PASS
Band2	9262	1	NV	20	-6.82	-0.003682	±2.5	PASS
Band2	9262	1	NV	30	-5.19	-0.002802	±2.5	PASS
Band2	9262	1	NV	40	-3.87	-0.002089	±2.5	PASS
Band2	9262	1	NV	50	-8.45	-0.004562	±2.5	PASS
Band2	9262	2	NV	-30	2.64	0.001425	±2.5	PASS
Band2	9262	2	NV	-20	-0.47	-0.000254	±2.5	PASS
Band2	9262	2	NV	-10	-4.68	-0.002526	±2.5	PASS
Band2	9262	2	NV	0	-7.01	-0.003784	±2.5	PASS
Band2	9262	2	NV	10	0.35	0.000189	±2.5	PASS
Band2	9262	2	NV	20	9.01	0.004864	±2.5	PASS
Band2	9262	2	NV	30	-0.84	-0.000453	±2.5	PASS
Band2	9262	2	NV	40	3.25	0.001754	±2.5	PASS
Band2	9262	2	NV	50	-0.92	-0.000497	±2.5	PASS
Band2	9262	3	NV	-30	7.16	0.003865	±2.5	PASS
Band2	9262	3	NV	-20	6.42	0.003466	±2.5	PASS
Band2	9262	3	NV	-10	5.49	0.002964	±2.5	PASS
Band2	9262	3	NV	0	2.83	0.001528	±2.5	PASS
Band2	9262	3	NV	10	1.67	0.000902	±2.5	PASS
Band2	9262	3	NV	20	-2.07	-0.001117	±2.5	PASS
Band2	9262	3	NV	30	-4.71	-0.002543	±2.5	PASS
Band2	9262	3	NV	40	-4.59	-0.002478	±2.5	PASS
Band2	9262	3	NV	50	3.52	0.001900	±2.5	PASS

Band2	9262	4	NV	-30	2.82	0.001522	±2.5	PASS
Band2	9262	4	NV	-20	-4.21	-0.002273	±2.5	PASS
Band2	9262	4	NV	-10	-1.17	-0.000632	±2.5	PASS
Band2	9262	4	NV	0	-2.16	-0.001166	±2.5	PASS
Band2	9262	4	NV	10	-3.15	-0.001700	±2.5	PASS
Band2	9262	4	NV	20	5.70	0.003077	±2.5	PASS
Band2	9262	4	NV	30	-0.89	-0.000480	±2.5	PASS
Band2	9262	4	NV	40	0.74	0.000399	±2.5	PASS
Band2	9262	4	NV	50	-3.12	-0.001684	±2.5	PASS
Band2	9400	1	NV	-30	4.04	0.002149	±2.5	PASS
Band2	9400	1	NV	-20	5.59	0.002973	±2.5	PASS
Band2	9400	1	NV	-10	4.46	0.002372	±2.5	PASS
Band2	9400	1	NV	0	2.70	0.001436	±2.5	PASS
Band2	9400	1	NV	10	0.51	0.000271	±2.5	PASS
Band2	9400	1	NV	20	-4.51	-0.002399	±2.5	PASS
Band2	9400	1	NV	30	-10.16	-0.005404	±2.5	PASS
Band2	9400	1	NV	40	3.36	0.001787	±2.5	PASS
Band2	9400	1	NV	50	-3.23	-0.001718	±2.5	PASS
Band2	9400	2	NV	-30	-8.72	-0.004638	±2.5	PASS
Band2	9400	2	NV	-20	-8.28	-0.004404	±2.5	PASS
Band2	9400	2	NV	-10	6.46	0.003436	±2.5	PASS
Band2	9400	2	NV	0	2.90	0.001543	±2.5	PASS
Band2	9400	2	NV	10	6.85	0.003644	±2.5	PASS
Band2	9400	2	NV	20	6.24	0.003319	±2.5	PASS
Band2	9400	2	NV	30	-10.18	-0.005415	±2.5	PASS
Band2	9400	2	NV	40	-8.50	-0.004521	±2.5	PASS
Band2	9400	2	NV	50	-6.09	-0.003239	±2.5	PASS
Band2	9400	3	NV	-30	2.30	0.001223	±2.5	PASS
Band2	9400	3	NV	-20	4.76	0.002532	±2.5	PASS
Band2	9400	3	NV	-10	11.31	0.006016	±2.5	PASS
Band2	9400	3	NV	0	2.11	0.001122	±2.5	PASS
Band2	9400	3	NV	10	5.02	0.002670	±2.5	PASS
Band2	9400	3	NV	20	-0.15	-0.000080	±2.5	PASS
Band2	9400	3	NV	30	2.07	0.001101	±2.5	PASS
Band2	9400	3	NV	40	5.55	0.002952	±2.5	PASS
Band2	9400	3	NV	50	2.75	0.001463	±2.5	PASS
Band2	9400	4	NV	-30	10.61	0.005644	±2.5	PASS

Band2	9400	4	NV	-20	12.39	0.006590	±2.5	PASS
Band2	9400	4	NV	-10	5.16	0.002745	±2.5	PASS
Band2	9400	4	NV	0	4.47	0.002378	±2.5	PASS
Band2	9400	4	NV	10	1.72	0.000915	±2.5	PASS
Band2	9400	4	NV	20	7.73	0.004112	±2.5	PASS
Band2	9400	4	NV	30	-2.83	-0.001505	±2.5	PASS
Band2	9400	4	NV	40	-8.27	-0.004399	±2.5	PASS
Band2	9400	4	NV	50	3.55	0.001888	±2.5	PASS
Band2	9538	1	NV	-30	-8.10	-0.004246	±2.5	PASS
Band2	9538	1	NV	-20	-2.80	-0.001468	±2.5	PASS
Band2	9538	1	NV	-10	8.40	0.004403	±2.5	PASS
Band2	9538	1	NV	0	11.03	0.005782	±2.5	PASS
Band2	9538	1	NV	10	12.34	0.006469	±2.5	PASS
Band2	9538	1	NV	20	0.99	0.000519	±2.5	PASS
Band2	9538	1	NV	30	-1.24	-0.000650	±2.5	PASS
Band2	9538	1	NV	40	-0.80	-0.000419	±2.5	PASS
Band2	9538	1	NV	50	-5.77	-0.003025	±2.5	PASS
Band2	9538	2	NV	-30	3.53	0.001850	±2.5	PASS
Band2	9538	2	NV	-20	0.01	0.000005	±2.5	PASS
Band2	9538	2	NV	-10	5.07	0.002658	±2.5	PASS
Band2	9538	2	NV	0	-4.37	-0.002291	±2.5	PASS
Band2	9538	2	NV	10	4.37	0.002291	±2.5	PASS
Band2	9538	2	NV	20	-4.22	-0.002212	±2.5	PASS
Band2	9538	2	NV	30	-6.00	-0.003145	±2.5	PASS
Band2	9538	2	NV	40	-3.84	-0.002013	±2.5	PASS
Band2	9538	2	NV	50	-9.20	-0.004823	±2.5	PASS
Band2	9538	3	NV	-30	-3.11	-0.001630	±2.5	PASS
Band2	9538	3	NV	-20	-2.23	-0.001169	±2.5	PASS
Band2	9538	3	NV	-10	-7.56	-0.003963	±2.5	PASS
Band2	9538	3	NV	0	13.86	0.007266	±2.5	PASS
Band2	9538	3	NV	10	0.30	0.000157	±2.5	PASS
Band2	9538	3	NV	20	1.34	0.000702	±2.5	PASS
Band2	9538	3	NV	30	-4.17	-0.002186	±2.5	PASS
Band2	9538	3	NV	40	1.91	0.001001	±2.5	PASS
Band2	9538	3	NV	50	-0.41	-0.000215	±2.5	PASS
Band2	9538	4	NV	-30	7.57	0.003968	±2.5	PASS
Band2	9538	4	NV	-20	-0.19	-0.000100	±2.5	PASS

Band2	9538	4	NV	-10	-1.78	-0.000933	±2.5	PASS
Band2	9538	4	NV	0	-0.28	-0.000147	±2.5	PASS
Band2	9538	4	NV	10	-4.06	-0.002128	±2.5	PASS
Band2	9538	4	NV	20	0.69	0.000362	±2.5	PASS
Band2	9538	4	NV	30	-3.85	-0.002018	±2.5	PASS
Band2	9538	4	NV	40	-1.35	-0.000708	±2.5	PASS
Band2	9538	4	NV	50	-4.74	-0.002485	±2.5	PASS

Voltage								
Band	Channel	Sub Test	Voltage (Vdc)	Temperature (°C)	Deviation (Hz)	Deviation (ppm)	Limit (ppm)	Verdict
Band2	9262	1	VN	NT	4.40	0.002375	±2.5	PASS
Band2	9262	1	VL	NT	1.97	0.001063	±2.5	PASS
Band2	9262	1	VH	NT	2.85	0.001539	±2.5	PASS
Band2	9262	2	VN	NT	2.22	0.001198	±2.5	PASS
Band2	9262	2	VL	NT	5.26	0.002840	±2.5	PASS
Band2	9262	2	VH	NT	1.87	0.001010	±2.5	PASS
Band2	9262	3	VN	NT	-8.93	-0.004821	±2.5	PASS
Band2	9262	3	VL	NT	4.93	0.002661	±2.5	PASS
Band2	9262	3	VH	NT	-2.06	-0.001112	±2.5	PASS
Band2	9262	4	VN	NT	3.98	0.002149	±2.5	PASS
Band2	9262	4	VL	NT	0.87	0.000470	±2.5	PASS
Band2	9262	4	VH	NT	-5.39	-0.002910	±2.5	PASS
Band2	9262	5	VN	NT	4.36	0.002354	±2.5	PASS
Band2	9262	5	VL	NT	8.67	0.004680	±2.5	PASS
Band2	9262	5	VH	NT	-7.10	-0.003833	±2.5	PASS
Band2	9400	1	VN	NT	-9.44	-0.005021	±2.5	PASS
Band2	9400	1	VL	NT	3.43	0.001824	±2.5	PASS
Band2	9400	1	VH	NT	1.64	0.000872	±2.5	PASS
Band2	9400	2	VN	NT	-5.57	-0.002963	±2.5	PASS
Band2	9400	2	VL	NT	3.83	0.002037	±2.5	PASS
Band2	9400	2	VH	NT	0.41	0.000218	±2.5	PASS
Band2	9400	3	VN	NT	2.60	0.001383	±2.5	PASS
Band2	9400	3	VL	NT	-1.95	-0.001037	±2.5	PASS
Band2	9400	3	VH	NT	-3.86	-0.002053	±2.5	PASS
Band2	9400	4	VN	NT	1.53	0.000814	±2.5	PASS
Band2	9400	4	VL	NT	3.43	0.001824	±2.5	PASS

Band2	9400	4	VH	NT	5.49	0.002920	±2.5	PASS
Band2	9400	5	VN	NT	0.12	0.000064	±2.5	PASS
Band2	9400	5	VL	NT	6.93	0.003686	±2.5	PASS
Band2	9400	5	VH	NT	6.73	0.003580	±2.5	PASS
Band2	9538	1	VN	NT	0.16	0.000084	±2.5	PASS
Band2	9538	1	VL	NT	6.59	0.003455	±2.5	PASS
Band2	9538	1	VH	NT	4.96	0.002600	±2.5	PASS
Band2	9538	2	VN	NT	-2.25	-0.001179	±2.5	PASS
Band2	9538	2	VL	NT	-7.30	-0.003827	±2.5	PASS
Band2	9538	2	VH	NT	1.66	0.000870	±2.5	PASS
Band2	9538	3	VN	NT	-1.67	-0.000875	±2.5	PASS
Band2	9538	3	VL	NT	-2.93	-0.001536	±2.5	PASS
Band2	9538	3	VH	NT	-6.10	-0.003198	±2.5	PASS
Band2	9538	4	VN	NT	0.51	0.000267	±2.5	PASS
Band2	9538	4	VL	NT	-10.34	-0.005420	±2.5	PASS
Band2	9538	4	VH	NT	3.05	0.001599	±2.5	PASS
Band2	9538	5	VN	NT	-0.68	-0.000356	±2.5	PASS
Band2	9538	5	VL	NT	-8.20	-0.004299	±2.5	PASS
Band2	9538	5	VH	NT	-0.89	-0.000467	±2.5	PASS

Temperature								
Band	Channel	Sub Test	Voltage (Vdc)	Temperature (°C)	Deviation (Hz)	Deviation (ppm)	Limit (ppm)	Verdict
Band2	9262	1	NV	-30	0.14	0.000076	±2.5	PASS
Band2	9262	1	NV	-20	-4.78	-0.002580	±2.5	PASS
Band2	9262	1	NV	-10	0.55	0.000297	±2.5	PASS
Band2	9262	1	NV	0	-0.99	-0.000534	±2.5	PASS
Band2	9262	1	NV	10	-0.45	-0.000243	±2.5	PASS
Band2	9262	1	NV	20	7.30	0.003941	±2.5	PASS
Band2	9262	1	NV	30	-0.89	-0.000480	±2.5	PASS
Band2	9262	1	NV	40	2.07	0.001117	±2.5	PASS
Band2	9262	1	NV	50	0.21	0.000113	±2.5	PASS
Band2	9262	2	NV	-30	-8.53	-0.004605	±2.5	PASS
Band2	9262	2	NV	-20	4.99	0.002694	±2.5	PASS
Band2	9262	2	NV	-10	2.00	0.001080	±2.5	PASS
Band2	9262	2	NV	0	3.05	0.001647	±2.5	PASS
Band2	9262	2	NV	10	-4.64	-0.002505	±2.5	PASS



Band2	9262	2	NV	20	-3.43	-0.001852	±2.5	PASS
Band2	9262	2	NV	30	3.38	0.001825	±2.5	PASS
Band2	9262	2	NV	40	3.75	0.002024	±2.5	PASS
Band2	9262	2	NV	50	-6.78	-0.003660	±2.5	PASS
Band2	9262	3	NV	-30	9.96	0.005377	±2.5	PASS
Band2	9262	3	NV	-20	0.51	0.000275	±2.5	PASS
Band2	9262	3	NV	-10	-8.50	-0.004589	±2.5	PASS
Band2	9262	3	NV	0	-2.80	-0.001512	±2.5	PASS
Band2	9262	3	NV	10	1.65	0.000891	±2.5	PASS
Band2	9262	3	NV	20	1.85	0.000999	±2.5	PASS
Band2	9262	3	NV	30	-0.05	-0.000027	±2.5	PASS
Band2	9262	3	NV	40	-2.34	-0.001263	±2.5	PASS
Band2	9262	3	NV	50	-2.91	-0.001571	±2.5	PASS
Band2	9262	4	NV	-30	10.11	0.005458	±2.5	PASS
Band2	9262	4	NV	-20	-0.72	-0.000389	±2.5	PASS
Band2	9262	4	NV	-10	6.50	0.003509	±2.5	PASS
Band2	9262	4	NV	0	3.33	0.001798	±2.5	PASS
Band2	9262	4	NV	10	2.60	0.001404	±2.5	PASS
Band2	9262	4	NV	20	-4.43	-0.002391	±2.5	PASS
Band2	9262	4	NV	30	2.27	0.001225	±2.5	PASS
Band2	9262	4	NV	40	4.13	0.002230	±2.5	PASS
Band2	9262	4	NV	50	3.00	0.001620	±2.5	PASS
Band2	9262	5	NV	-30	2.01	0.001085	±2.5	PASS
Band2	9262	5	NV	-20	-4.91	-0.002651	±2.5	PASS
Band2	9262	5	NV	-10	0.84	0.000453	±2.5	PASS
Band2	9262	5	NV	0	-7.02	-0.003790	±2.5	PASS
Band2	9262	5	NV	10	-4.37	-0.002359	±2.5	PASS
Band2	9262	5	NV	20	-7.24	-0.003908	±2.5	PASS
Band2	9262	5	NV	30	-2.18	-0.001177	±2.5	PASS
Band2	9262	5	NV	40	1.08	0.000583	±2.5	PASS
Band2	9262	5	NV	50	0.22	0.000119	±2.5	PASS
Band2	9400	1	NV	-30	-1.00	-0.000532	±2.5	PASS
Band2	9400	1	NV	-20	2.13	0.001133	±2.5	PASS
Band2	9400	1	NV	-10	-0.20	-0.000106	±2.5	PASS
Band2	9400	1	NV	0	-4.27	-0.002271	±2.5	PASS
Band2	9400	1	NV	10	-3.48	-0.001851	±2.5	PASS
Band2	9400	1	NV	20	4.80	0.002553	±2.5	PASS

Band2	9400	1	NV	30	0.87	0.000463	±2.5	PASS
Band2	9400	1	NV	40	1.02	0.000543	±2.5	PASS
Band2	9400	1	NV	50	3.29	0.001750	±2.5	PASS
Band2	9400	2	NV	-30	1.78	0.000947	±2.5	PASS
Band2	9400	2	NV	-20	1.55	0.000824	±2.5	PASS
Band2	9400	2	NV	-10	-5.11	-0.002718	±2.5	PASS
Band2	9400	2	NV	0	-7.98	-0.004245	±2.5	PASS
Band2	9400	2	NV	10	10.84	0.005766	±2.5	PASS
Band2	9400	2	NV	20	3.43	0.001824	±2.5	PASS
Band2	9400	2	NV	30	-1.60	-0.000851	±2.5	PASS
Band2	9400	2	NV	40	-2.87	-0.001527	±2.5	PASS
Band2	9400	2	NV	50	-0.46	-0.000245	±2.5	PASS
Band2	9400	3	NV	-30	-2.50	-0.001330	±2.5	PASS
Band2	9400	3	NV	-20	2.35	0.001250	±2.5	PASS
Band2	9400	3	NV	-10	7.54	0.004011	±2.5	PASS
Band2	9400	3	NV	0	-9.68	-0.005149	±2.5	PASS
Band2	9400	3	NV	10	4.84	0.002574	±2.5	PASS
Band2	9400	3	NV	20	-2.70	-0.001436	±2.5	PASS
Band2	9400	3	NV	30	-1.23	-0.000654	±2.5	PASS
Band2	9400	3	NV	40	-2.52	-0.001340	±2.5	PASS
Band2	9400	3	NV	50	-3.71	-0.001973	±2.5	PASS
Band2	9400	4	NV	-30	-2.05	-0.001090	±2.5	PASS
Band2	9400	4	NV	-20	8.36	0.004447	±2.5	PASS
Band2	9400	4	NV	-10	-2.25	-0.001197	±2.5	PASS
Band2	9400	4	NV	0	-8.52	-0.004532	±2.5	PASS
Band2	9400	4	NV	10	-1.52	-0.000809	±2.5	PASS
Band2	9400	4	NV	20	-5.76	-0.003064	±2.5	PASS
Band2	9400	4	NV	30	4.04	0.002149	±2.5	PASS
Band2	9400	4	NV	40	-4.05	-0.002154	±2.5	PASS
Band2	9400	4	NV	50	8.85	0.004707	±2.5	PASS
Band2	9400	5	NV	-30	-1.27	-0.000676	±2.5	PASS
Band2	9400	5	NV	-20	0.12	0.000064	±2.5	PASS
Band2	9400	5	NV	-10	-15.91	-0.008463	±2.5	PASS
Band2	9400	5	NV	0	-7.42	-0.003947	±2.5	PASS
Band2	9400	5	NV	10	-7.77	-0.004133	±2.5	PASS
Band2	9400	5	NV	20	10.21	0.005431	±2.5	PASS
Band2	9400	5	NV	30	6.75	0.003590	±2.5	PASS

Band2	9400	5	NV	40	-3.25	-0.001729	±2.5	PASS
Band2	9400	5	NV	50	0.34	0.000181	±2.5	PASS
Band2	9538	1	NV	-30	-3.66	-0.001919	±2.5	PASS
Band2	9538	1	NV	-20	0.26	0.000136	±2.5	PASS
Band2	9538	1	NV	-10	-2.29	-0.001200	±2.5	PASS
Band2	9538	1	NV	0	1.02	0.000535	±2.5	PASS
Band2	9538	1	NV	10	0.80	0.000419	±2.5	PASS
Band2	9538	1	NV	20	5.59	0.002930	±2.5	PASS
Band2	9538	1	NV	30	8.22	0.004309	±2.5	PASS
Band2	9538	1	NV	40	2.28	0.001195	±2.5	PASS
Band2	9538	1	NV	50	5.24	0.002747	±2.5	PASS
Band2	9538	2	NV	-30	3.27	0.001714	±2.5	PASS
Band2	9538	2	NV	-20	-0.04	-0.000021	±2.5	PASS
Band2	9538	2	NV	-10	-13.33	-0.006988	±2.5	PASS
Band2	9538	2	NV	0	5.99	0.003140	±2.5	PASS
Band2	9538	2	NV	10	-1.28	-0.000671	±2.5	PASS
Band2	9538	2	NV	20	-6.29	-0.003297	±2.5	PASS
Band2	9538	2	NV	30	-2.75	-0.001442	±2.5	PASS
Band2	9538	2	NV	40	0.64	0.000336	±2.5	PASS
Band2	9538	2	NV	50	0.99	0.000519	±2.5	PASS
Band2	9538	3	NV	-30	1.97	0.001033	±2.5	PASS
Band2	9538	3	NV	-20	-1.27	-0.000666	±2.5	PASS
Band2	9538	3	NV	-10	-0.06	-0.000031	±2.5	PASS
Band2	9538	3	NV	0	-0.36	-0.000189	±2.5	PASS
Band2	9538	3	NV	10	-9.25	-0.004849	±2.5	PASS
Band2	9538	3	NV	20	7.39	0.003874	±2.5	PASS
Band2	9538	3	NV	30	-8.05	-0.004220	±2.5	PASS
Band2	9538	3	NV	40	-2.07	-0.001085	±2.5	PASS
Band2	9538	3	NV	50	-0.49	-0.000257	±2.5	PASS
Band2	9538	4	NV	-30	5.08	0.002663	±2.5	PASS
Band2	9538	4	NV	-20	8.60	0.004508	±2.5	PASS
Band2	9538	4	NV	-10	6.23	0.003266	±2.5	PASS
Band2	9538	4	NV	0	-5.97	-0.003130	±2.5	PASS
Band2	9538	4	NV	10	12.90	0.006762	±2.5	PASS
Band2	9538	4	NV	20	5.72	0.002999	±2.5	PASS
Band2	9538	4	NV	30	-1.70	-0.000891	±2.5	PASS
Band2	9538	4	NV	40	-1.27	-0.000666	±2.5	PASS

Band2	9538	4	NV	50	-1.45	-0.000760	±2.5	PASS
Band2	9538	5	NV	-30	-1.09	-0.000571	±2.5	PASS
Band2	9538	5	NV	-20	4.67	0.002448	±2.5	PASS
Band2	9538	5	NV	-10	0.04	0.000021	±2.5	PASS
Band2	9538	5	NV	0	-4.16	-0.002181	±2.5	PASS
Band2	9538	5	NV	10	7.62	0.003995	±2.5	PASS
Band2	9538	5	NV	20	-2.16	-0.001132	±2.5	PASS
Band2	9538	5	NV	30	-5.56	-0.002915	±2.5	PASS
Band2	9538	5	NV	40	5.49	0.002878	±2.5	PASS
Band2	9538	5	NV	50	1.79	0.000938	±2.5	PASS

Voltage							
Band	Channel	Voltage (Vdc)	Temperature (°C)	Deviation (Hz)	Deviation (ppm)	Limit (ppm)	Verdict
Band4	1312	VN	NT	5.66	0.003305	±2.5	PASS
Band4	1312	VL	NT	2.41	0.001407	±2.5	PASS
Band4	1312	VH	NT	8.76	0.005116	±2.5	PASS
Band4	1413	VN	NT	9.20	0.005310	±2.5	PASS
Band4	1413	VL	NT	3.14	0.001812	±2.5	PASS
Band4	1413	VH	NT	-0.51	-0.000294	±2.5	PASS
Band4	1513	VN	NT	8.64	0.004930	±2.5	PASS
Band4	1513	VL	NT	3.27	0.001866	±2.5	PASS
Band4	1513	VH	NT	-0.90	-0.000514	±2.5	PASS

Temperature							
Band	Channel	Voltage (Vdc)	Temperature (°C)	Deviation (Hz)	Deviation (ppm)	Limit (ppm)	Verdict
Band4	1312	NV	-30	8.46	0.004940	±2.5	PASS
Band4	1312	NV	-20	-2.18	-0.001273	±2.5	PASS
Band4	1312	NV	-10	5.02	0.002932	±2.5	PASS
Band4	1312	NV	0	-3.77	-0.002202	±2.5	PASS
Band4	1312	NV	10	-1.15	-0.000672	±2.5	PASS
Band4	1312	NV	20	7.43	0.004339	±2.5	PASS
Band4	1312	NV	30	-5.01	-0.002926	±2.5	PASS
Band4	1312	NV	40	-4.83	-0.002821	±2.5	PASS
Band4	1312	NV	50	-6.77	-0.003954	±2.5	PASS
Band4	1413	NV	-30	1.05	0.000606	±2.5	PASS
Band4	1413	NV	-20	-2.26	-0.001304	±2.5	PASS
Band4	1413	NV	-10	-4.17	-0.002407	±2.5	PASS
Band4	1413	NV	0	2.92	0.001685	±2.5	PASS
Band4	1413	NV	10	6.94	0.004006	±2.5	PASS
Band4	1413	NV	20	8.54	0.004929	±2.5	PASS
Band4	1413	NV	30	-1.66	-0.000958	±2.5	PASS
Band4	1413	NV	40	5.16	0.002978	±2.5	PASS
Band4	1413	NV	50	9.00	0.005195	±2.5	PASS
Band4	1513	NV	-30	-0.19	-0.000108	±2.5	PASS
Band4	1513	NV	-20	-2.52	-0.001438	±2.5	PASS
Band4	1513	NV	-10	-5.67	-0.003235	±2.5	PASS
Band4	1513	NV	0	-11.78	-0.006721	±2.5	PASS
Band4	1513	NV	10	10.49	0.005985	±2.5	PASS

Band4	1513	NV	20	2.12	0.001210	±2.5	PASS
Band4	1513	NV	30	10.63	0.006065	±2.5	PASS
Band4	1513	NV	40	-2.60	-0.001484	±2.5	PASS
Band4	1513	NV	50	7.91	0.004513	±2.5	PASS

Voltage							
Band	Channel	Voltage (Vdc)	Temperature (°C)	Deviation (Hz)	Deviation (ppm)	Limit (ppm)	Verdict
Band5	4132	VN	NT	-3.81	-0.004610	±2.5	PASS
Band5	4132	VL	NT	0.18	0.000218	±2.5	PASS
Band5	4132	VH	NT	0.21	0.000254	±2.5	PASS
Band5	4182	VN	NT	-0.94	-0.001124	±2.5	PASS
Band5	4182	VL	NT	1.39	0.001662	±2.5	PASS
Band5	4182	VH	NT	-0.36	-0.000430	±2.5	PASS
Band5	4233	VN	NT	0.39	0.000461	±2.5	PASS
Band5	4233	VL	NT	-0.80	-0.000945	±2.5	PASS
Band5	4233	VH	NT	1.72	0.002032	±2.5	PASS

Temperature							
Band	Channel	Voltage (Vdc)	Temperature (°C)	Deviation (Hz)	Deviation (ppm)	Limit (ppm)	Verdict
Band5	4132	NV	-30	1.93	0.002335	±2.5	PASS
Band5	4132	NV	-20	0.97	0.001174	±2.5	PASS
Band5	4132	NV	-10	-0.35	-0.000424	±2.5	PASS
Band5	4132	NV	0	-0.59	-0.000714	±2.5	PASS
Band5	4132	NV	10	-2.10	-0.002541	±2.5	PASS
Band5	4132	NV	20	-3.23	-0.003909	±2.5	PASS
Band5	4132	NV	30	-0.27	-0.000327	±2.5	PASS
Band5	4132	NV	40	3.71	0.004489	±2.5	PASS
Band5	4132	NV	50	1.01	0.001222	±2.5	PASS
Band5	4182	NV	-30	1.62	0.001937	±2.5	PASS
Band5	4182	NV	-20	-0.19	-0.000227	±2.5	PASS
Band5	4182	NV	-10	2.68	0.003204	±2.5	PASS
Band5	4182	NV	0	-0.52	-0.000622	±2.5	PASS
Band5	4182	NV	10	0.75	0.000897	±2.5	PASS
Band5	4182	NV	20	2.29	0.002738	±2.5	PASS
Band5	4182	NV	30	-3.33	-0.003981	±2.5	PASS
Band5	4182	NV	40	-1.19	-0.001423	±2.5	PASS
Band5	4182	NV	50	1.29	0.001542	±2.5	PASS
Band5	4233	NV	-30	5.74	0.006780	±2.5	PASS
Band5	4233	NV	-20	1.05	0.001240	±2.5	PASS
Band5	4233	NV	-10	1.87	0.002209	±2.5	PASS
Band5	4233	NV	0	0.43	0.000508	±2.5	PASS
Band5	4233	NV	10	-1.55	-0.001831	±2.5	PASS

Band5	4233	NV	20	0.47	0.000555	±2.5	PASS
Band5	4233	NV	30	-2.23	-0.002634	±2.5	PASS
Band5	4233	NV	40	-1.81	-0.002138	±2.5	PASS
Band5	4233	NV	50	-2.32	-0.002740	±2.5	PASS

Voltage								
Band	Channel	Sub Test	Voltage (Vdc)	Temperature (°C)	Deviation (Hz)	Deviation (ppm)	Limit (ppm)	Verdict
Band5	4132	1	VN	NT	-2.06	-0.002493	±2.5	PASS
Band5	4132	1	VL	NT	-0.71	-0.000859	±2.5	PASS
Band5	4132	1	VH	NT	-3.13	-0.003788	±2.5	PASS
Band5	4132	2	VN	NT	0.82	0.000992	±2.5	PASS
Band5	4132	2	VL	NT	-0.89	-0.001077	±2.5	PASS
Band5	4132	2	VH	NT	-0.79	-0.000956	±2.5	PASS
Band5	4132	3	VN	NT	1.63	0.001972	±2.5	PASS
Band5	4132	3	VL	NT	0.49	0.000593	±2.5	PASS
Band5	4132	3	VH	NT	-2.62	-0.003170	±2.5	PASS
Band5	4132	4	VN	NT	-0.14	-0.000169	±2.5	PASS
Band5	4132	4	VL	NT	-2.21	-0.002674	±2.5	PASS
Band5	4132	4	VH	NT	0.24	0.000290	±2.5	PASS
Band5	4182	1	VN	NT	1.33	0.001590	±2.5	PASS
Band5	4182	1	VL	NT	3.30	0.003945	±2.5	PASS
Band5	4182	1	VH	NT	1.12	0.001339	±2.5	PASS
Band5	4182	2	VN	NT	3.88	0.004639	±2.5	PASS
Band5	4182	2	VL	NT	4.03	0.004818	±2.5	PASS
Band5	4182	2	VH	NT	-1.07	-0.001279	±2.5	PASS
Band5	4182	3	VN	NT	1.38	0.001650	±2.5	PASS
Band5	4182	3	VL	NT	-2.21	-0.002642	±2.5	PASS
Band5	4182	3	VH	NT	-1.42	-0.001698	±2.5	PASS
Band5	4182	4	VN	NT	-0.17	-0.000203	±2.5	PASS
Band5	4182	4	VL	NT	-0.39	-0.000466	±2.5	PASS
Band5	4182	4	VH	NT	0.16	0.000191	±2.5	PASS
Band5	4233	1	VN	NT	1.32	0.001559	±2.5	PASS
Band5	4233	1	VL	NT	-0.37	-0.000437	±2.5	PASS
Band5	4233	1	VH	NT	0.92	0.001087	±2.5	PASS
Band5	4233	2	VN	NT	-1.88	-0.002221	±2.5	PASS
Band5	4233	2	VL	NT	-1.11	-0.001311	±2.5	PASS
Band5	4233	2	VH	NT	-4.01	-0.004737	±2.5	PASS



Band5	4233	3	VN	NT	3.80	0.004489	±2.5	PASS
Band5	4233	3	VL	NT	2.25	0.002658	±2.5	PASS
Band5	4233	3	VH	NT	-2.18	-0.002575	±2.5	PASS
Band5	4233	4	VN	NT	-8.06	-0.009520	±2.5	PASS
Band5	4233	4	VL	NT	-3.45	-0.004075	±2.5	PASS
Band5	4233	4	VH	NT	1.46	0.001725	±2.5	PASS

Temperature								
Band	Channel	Sub Test	Voltage (Vdc)	Temperature (°C)	Deviation (Hz)	Deviation (ppm)	Limit (ppm)	Verdict
Band5	4132	1	NV	-30	0.39	0.000472	±2.5	PASS
Band5	4132	1	NV	-20	-1.92	-0.002323	±2.5	PASS
Band5	4132	1	NV	-10	0.74	0.000895	±2.5	PASS
Band5	4132	1	NV	0	1.12	0.001355	±2.5	PASS
Band5	4132	1	NV	10	-2.53	-0.003061	±2.5	PASS
Band5	4132	1	NV	20	0.55	0.000666	±2.5	PASS
Band5	4132	1	NV	30	2.07	0.002505	±2.5	PASS
Band5	4132	1	NV	40	0.26	0.000315	±2.5	PASS
Band5	4132	1	NV	50	0.46	0.000557	±2.5	PASS
Band5	4132	2	NV	-30	-2.05	-0.002481	±2.5	PASS
Band5	4132	2	NV	-20	-0.65	-0.000787	±2.5	PASS
Band5	4132	2	NV	-10	-2.07	-0.002505	±2.5	PASS
Band5	4132	2	NV	0	1.66	0.002009	±2.5	PASS
Band5	4132	2	NV	10	-2.86	-0.003461	±2.5	PASS
Band5	4132	2	NV	20	-0.07	-0.000085	±2.5	PASS
Band5	4132	2	NV	30	-0.19	-0.000230	±2.5	PASS
Band5	4132	2	NV	40	-2.42	-0.002928	±2.5	PASS
Band5	4132	2	NV	50	-1.31	-0.001585	±2.5	PASS
Band5	4132	3	NV	-30	0.01	0.000012	±2.5	PASS
Band5	4132	3	NV	-20	-2.84	-0.003437	±2.5	PASS
Band5	4132	3	NV	-10	-0.13	-0.000157	±2.5	PASS
Band5	4132	3	NV	0	1.46	0.001767	±2.5	PASS
Band5	4132	3	NV	10	-1.90	-0.002299	±2.5	PASS
Band5	4132	3	NV	20	1.59	0.001924	±2.5	PASS
Band5	4132	3	NV	30	2.43	0.002940	±2.5	PASS
Band5	4132	3	NV	40	2.25	0.002723	±2.5	PASS
Band5	4132	3	NV	50	1.01	0.001222	±2.5	PASS

Band5	4132	4	NV	-30	0.19	0.000230	±2.5	PASS
Band5	4132	4	NV	-20	1.92	0.002323	±2.5	PASS
Band5	4132	4	NV	-10	1.38	0.001670	±2.5	PASS
Band5	4132	4	NV	0	-1.06	-0.001283	±2.5	PASS
Band5	4132	4	NV	10	1.18	0.001428	±2.5	PASS
Band5	4132	4	NV	20	0.98	0.001186	±2.5	PASS
Band5	4132	4	NV	30	0.06	0.000073	±2.5	PASS
Band5	4132	4	NV	40	0.04	0.000048	±2.5	PASS
Band5	4132	4	NV	50	-0.12	-0.000145	±2.5	PASS
Band5	4182	1	NV	-30	-2.27	-0.002714	±2.5	PASS
Band5	4182	1	NV	-20	2.95	0.003527	±2.5	PASS
Band5	4182	1	NV	-10	1.58	0.001889	±2.5	PASS
Band5	4182	1	NV	0	-1.68	-0.002009	±2.5	PASS
Band5	4182	1	NV	10	1.13	0.001351	±2.5	PASS
Band5	4182	1	NV	20	5.40	0.006456	±2.5	PASS
Band5	4182	1	NV	30	0.34	0.000407	±2.5	PASS
Band5	4182	1	NV	40	-4.73	-0.005655	±2.5	PASS
Band5	4182	1	NV	50	-0.14	-0.000167	±2.5	PASS
Band5	4182	2	NV	-30	-0.87	-0.001040	±2.5	PASS
Band5	4182	2	NV	-20	1.04	0.001243	±2.5	PASS
Band5	4182	2	NV	-10	-2.20	-0.002630	±2.5	PASS
Band5	4182	2	NV	0	3.08	0.003682	±2.5	PASS
Band5	4182	2	NV	10	-1.00	-0.001196	±2.5	PASS
Band5	4182	2	NV	20	-0.90	-0.001076	±2.5	PASS
Band5	4182	2	NV	30	-1.94	-0.002319	±2.5	PASS
Band5	4182	2	NV	40	3.43	0.004101	±2.5	PASS
Band5	4182	2	NV	50	-1.18	-0.001411	±2.5	PASS
Band5	4182	3	NV	-30	0.44	0.000526	±2.5	PASS
Band5	4182	3	NV	-20	2.05	0.002451	±2.5	PASS
Band5	4182	3	NV	-10	0.97	0.001160	±2.5	PASS
Band5	4182	3	NV	0	1.08	0.001291	±2.5	PASS
Band5	4182	3	NV	10	-7.84	-0.009374	±2.5	PASS
Band5	4182	3	NV	20	-0.27	-0.000323	±2.5	PASS
Band5	4182	3	NV	30	1.07	0.001279	±2.5	PASS
Band5	4182	3	NV	40	0.64	0.000765	±2.5	PASS
Band5	4182	3	NV	50	-0.63	-0.000753	±2.5	PASS
Band5	4182	4	NV	-30	-1.37	-0.001638	±2.5	PASS

Band5	4182	4	NV	-20	1.39	0.001662	±2.5	PASS
Band5	4182	4	NV	-10	-0.94	-0.001124	±2.5	PASS
Band5	4182	4	NV	0	0.24	0.000287	±2.5	PASS
Band5	4182	4	NV	10	1.15	0.001375	±2.5	PASS
Band5	4182	4	NV	20	3.38	0.004041	±2.5	PASS
Band5	4182	4	NV	30	-0.24	-0.000287	±2.5	PASS
Band5	4182	4	NV	40	-1.10	-0.001315	±2.5	PASS
Band5	4182	4	NV	50	1.24	0.001483	±2.5	PASS
Band5	4233	1	NV	-30	-2.76	-0.003260	±2.5	PASS
Band5	4233	1	NV	-20	-1.49	-0.001760	±2.5	PASS
Band5	4233	1	NV	-10	1.36	0.001606	±2.5	PASS
Band5	4233	1	NV	0	-0.34	-0.000402	±2.5	PASS
Band5	4233	1	NV	10	-1.15	-0.001358	±2.5	PASS
Band5	4233	1	NV	20	0.82	0.000969	±2.5	PASS
Band5	4233	1	NV	30	1.65	0.001949	±2.5	PASS
Band5	4233	1	NV	40	1.84	0.002173	±2.5	PASS
Band5	4233	1	NV	50	2.78	0.003284	±2.5	PASS
Band5	4233	2	NV	-30	-0.83	-0.000980	±2.5	PASS
Band5	4233	2	NV	-20	-1.61	-0.001902	±2.5	PASS
Band5	4233	2	NV	-10	3.03	0.003579	±2.5	PASS
Band5	4233	2	NV	0	-1.80	-0.002126	±2.5	PASS
Band5	4233	2	NV	10	1.71	0.002020	±2.5	PASS
Band5	4233	2	NV	20	0.69	0.000815	±2.5	PASS
Band5	4233	2	NV	30	-0.66	-0.000780	±2.5	PASS
Band5	4233	2	NV	40	-1.72	-0.002032	±2.5	PASS
Band5	4233	2	NV	50	0.39	0.000461	±2.5	PASS
Band5	4233	3	NV	-30	1.95	0.002303	±2.5	PASS
Band5	4233	3	NV	-20	1.39	0.001642	±2.5	PASS
Band5	4233	3	NV	-10	-0.16	-0.000189	±2.5	PASS
Band5	4233	3	NV	0	1.57	0.001854	±2.5	PASS
Band5	4233	3	NV	10	-0.96	-0.001134	±2.5	PASS
Band5	4233	3	NV	20	0.92	0.001087	±2.5	PASS
Band5	4233	3	NV	30	-0.85	-0.001004	±2.5	PASS
Band5	4233	3	NV	40	-2.25	-0.002658	±2.5	PASS
Band5	4233	3	NV	50	-1.74	-0.002055	±2.5	PASS
Band5	4233	4	NV	-30	-0.52	-0.000614	±2.5	PASS
Band5	4233	4	NV	-20	-0.40	-0.000472	±2.5	PASS

Band5	4233	4	NV	-10	1.25	0.001476	±2.5	PASS
Band5	4233	4	NV	0	1.20	0.001417	±2.5	PASS
Band5	4233	4	NV	10	-2.10	-0.002481	±2.5	PASS
Band5	4233	4	NV	20	1.55	0.001831	±2.5	PASS
Band5	4233	4	NV	30	-0.19	-0.000224	±2.5	PASS
Band5	4233	4	NV	40	-2.71	-0.003201	±2.5	PASS
Band5	4233	4	NV	50	1.60	0.001890	±2.5	PASS

Voltage								
Band	Channel	Sub Test	Voltage (Vdc)	Temperature (°C)	Deviation (Hz)	Deviation (ppm)	Limit (ppm)	Verdict
Band5	4132	1	VN	NT	-1.02	-0.001234	±2.5	PASS
Band5	4132	1	VL	NT	1.04	0.001258	±2.5	PASS
Band5	4132	1	VH	NT	-2.58	-0.003122	±2.5	PASS
Band5	4132	2	VN	NT	2.94	0.003558	±2.5	PASS
Band5	4132	2	VL	NT	-2.29	-0.002771	±2.5	PASS
Band5	4132	2	VH	NT	-0.54	-0.000653	±2.5	PASS
Band5	4132	3	VN	NT	2.16	0.002614	±2.5	PASS
Band5	4132	3	VL	NT	-3.23	-0.003909	±2.5	PASS
Band5	4132	3	VH	NT	-0.08	-0.000097	±2.5	PASS
Band5	4132	4	VN	NT	-1.29	-0.001561	±2.5	PASS
Band5	4132	4	VL	NT	0.90	0.001089	±2.5	PASS
Band5	4132	4	VH	NT	0.99	0.001198	±2.5	PASS
Band5	4132	5	VN	NT	1.80	0.002178	±2.5	PASS
Band5	4132	5	VL	NT	0.85	0.001029	±2.5	PASS
Band5	4132	5	VH	NT	0.99	0.001198	±2.5	PASS
Band5	4182	1	VN	NT	-0.41	-0.000490	±2.5	PASS
Band5	4182	1	VL	NT	1.21	0.001447	±2.5	PASS
Band5	4182	1	VH	NT	-1.92	-0.002296	±2.5	PASS
Band5	4182	2	VN	NT	2.77	0.003312	±2.5	PASS
Band5	4182	2	VL	NT	-2.13	-0.002547	±2.5	PASS
Band5	4182	2	VH	NT	-2.96	-0.003539	±2.5	PASS
Band5	4182	3	VN	NT	2.66	0.003180	±2.5	PASS
Band5	4182	3	VL	NT	-1.57	-0.001877	±2.5	PASS
Band5	4182	3	VH	NT	-0.87	-0.001040	±2.5	PASS
Band5	4182	4	VN	NT	1.29	0.001542	±2.5	PASS
Band5	4182	4	VL	NT	2.73	0.003264	±2.5	PASS

Band5	4182	4	VH	NT	2.85	0.003407	±2.5	PASS
Band5	4182	5	VN	NT	-1.84	-0.002200	±2.5	PASS
Band5	4182	5	VL	NT	-1.65	-0.001973	±2.5	PASS
Band5	4182	5	VH	NT	-2.87	-0.003431	±2.5	PASS
Band5	4233	1	VN	NT	-0.77	-0.000910	±2.5	PASS
Band5	4233	1	VL	NT	1.14	0.001347	±2.5	PASS
Band5	4233	1	VH	NT	0.84	0.000992	±2.5	PASS
Band5	4233	2	VN	NT	-1.99	-0.002351	±2.5	PASS
Band5	4233	2	VL	NT	1.75	0.002067	±2.5	PASS
Band5	4233	2	VH	NT	-4.09	-0.004831	±2.5	PASS
Band5	4233	3	VN	NT	0.09	0.000106	±2.5	PASS
Band5	4233	3	VL	NT	3.25	0.003839	±2.5	PASS
Band5	4233	3	VH	NT	2.11	0.002492	±2.5	PASS
Band5	4233	4	VN	NT	0.41	0.000484	±2.5	PASS
Band5	4233	4	VL	NT	0.23	0.000272	±2.5	PASS
Band5	4233	4	VH	NT	-2.00	-0.002362	±2.5	PASS
Band5	4233	5	VN	NT	-5.29	-0.006249	±2.5	PASS
Band5	4233	5	VL	NT	3.88	0.004583	±2.5	PASS
Band5	4233	5	VH	NT	3.23	0.003815	±2.5	PASS

Temperature								
Band	Channel	Sub Test	Voltage (Vdc)	Temperature (°C)	Deviation (Hz)	Deviation (ppm)	Limit (ppm)	Verdict
Band5	4132	1	NV	-30	-1.57	-0.001900	±2.5	PASS
Band5	4132	1	NV	-20	-0.09	-0.000109	±2.5	PASS
Band5	4132	1	NV	-10	3.25	0.003933	±2.5	PASS
Band5	4132	1	NV	0	-2.43	-0.002940	±2.5	PASS
Band5	4132	1	NV	10	-2.35	-0.002844	±2.5	PASS
Band5	4132	1	NV	20	-1.67	-0.002021	±2.5	PASS
Band5	4132	1	NV	30	-2.32	-0.002807	±2.5	PASS
Band5	4132	1	NV	40	-2.12	-0.002565	±2.5	PASS
Band5	4132	1	NV	50	-1.71	-0.002069	±2.5	PASS
Band5	4132	2	NV	-30	-2.83	-0.003424	±2.5	PASS
Band5	4132	2	NV	-20	-0.90	-0.001089	±2.5	PASS
Band5	4132	2	NV	-10	-0.16	-0.000194	±2.5	PASS
Band5	4132	2	NV	0	0.02	0.000024	±2.5	PASS
Band5	4132	2	NV	10	-0.66	-0.000799	±2.5	PASS

Band5	4132	2	NV	20	-2.21	-0.002674	±2.5	PASS
Band5	4132	2	NV	30	0.87	0.001053	±2.5	PASS
Band5	4132	2	NV	40	1.03	0.001246	±2.5	PASS
Band5	4132	2	NV	50	2.30	0.002783	±2.5	PASS
Band5	4132	3	NV	-30	1.84	0.002227	±2.5	PASS
Band5	4132	3	NV	-20	1.31	0.001585	±2.5	PASS
Band5	4132	3	NV	-10	-1.03	-0.001246	±2.5	PASS
Band5	4132	3	NV	0	0.24	0.000290	±2.5	PASS
Band5	4132	3	NV	10	-0.23	-0.000278	±2.5	PASS
Band5	4132	3	NV	20	2.53	0.003061	±2.5	PASS
Band5	4132	3	NV	30	-2.87	-0.003473	±2.5	PASS
Band5	4132	3	NV	40	-0.58	-0.000702	±2.5	PASS
Band5	4132	3	NV	50	0.84	0.001016	±2.5	PASS
Band5	4132	4	NV	-30	-1.62	-0.001960	±2.5	PASS
Band5	4132	4	NV	-20	-0.74	-0.000895	±2.5	PASS
Band5	4132	4	NV	-10	0.64	0.000774	±2.5	PASS
Band5	4132	4	NV	0	1.42	0.001718	±2.5	PASS
Band5	4132	4	NV	10	0.36	0.000436	±2.5	PASS
Band5	4132	4	NV	20	-0.40	-0.000484	±2.5	PASS
Band5	4132	4	NV	30	-0.04	-0.000048	±2.5	PASS
Band5	4132	4	NV	40	-0.09	-0.000109	±2.5	PASS
Band5	4132	4	NV	50	-1.74	-0.002106	±2.5	PASS
Band5	4132	5	NV	-30	0.14	0.000169	±2.5	PASS
Band5	4132	5	NV	-20	-0.49	-0.000593	±2.5	PASS
Band5	4132	5	NV	-10	-0.34	-0.000411	±2.5	PASS
Band5	4132	5	NV	0	2.35	0.002844	±2.5	PASS
Band5	4132	5	NV	10	0.11	0.000133	±2.5	PASS
Band5	4132	5	NV	20	0.50	0.000605	±2.5	PASS
Band5	4132	5	NV	30	-0.96	-0.001162	±2.5	PASS
Band5	4132	5	NV	40	-1.80	-0.002178	±2.5	PASS
Band5	4132	5	NV	50	0.86	0.001041	±2.5	PASS
Band5	4182	1	NV	-30	-0.84	-0.001004	±2.5	PASS
Band5	4182	1	NV	-20	0.39	0.000466	±2.5	PASS
Band5	4182	1	NV	-10	-2.04	-0.002439	±2.5	PASS
Band5	4182	1	NV	0	1.23	0.001471	±2.5	PASS
Band5	4182	1	NV	10	0.54	0.000646	±2.5	PASS
Band5	4182	1	NV	20	0.51	0.000610	±2.5	PASS

Band5	4182	1	NV	30	-0.26	-0.000311	±2.5	PASS
Band5	4182	1	NV	40	3.96	0.004735	±2.5	PASS
Band5	4182	1	NV	50	0.97	0.001160	±2.5	PASS
Band5	4182	2	NV	-30	-1.32	-0.001578	±2.5	PASS
Band5	4182	2	NV	-20	-1.51	-0.001805	±2.5	PASS
Band5	4182	2	NV	-10	0.35	0.000418	±2.5	PASS
Band5	4182	2	NV	0	2.93	0.003503	±2.5	PASS
Band5	4182	2	NV	10	-3.15	-0.003766	±2.5	PASS
Band5	4182	2	NV	20	0.67	0.000801	±2.5	PASS
Band5	4182	2	NV	30	-2.36	-0.002822	±2.5	PASS
Band5	4182	2	NV	40	0.56	0.000670	±2.5	PASS
Band5	4182	2	NV	50	0.24	0.000287	±2.5	PASS
Band5	4182	3	NV	-30	1.17	0.001399	±2.5	PASS
Band5	4182	3	NV	-20	-1.62	-0.001937	±2.5	PASS
Band5	4182	3	NV	-10	-0.85	-0.001016	±2.5	PASS
Band5	4182	3	NV	0	-1.60	-0.001913	±2.5	PASS
Band5	4182	3	NV	10	1.47	0.001758	±2.5	PASS
Band5	4182	3	NV	20	1.03	0.001231	±2.5	PASS
Band5	4182	3	NV	30	-0.18	-0.000215	±2.5	PASS
Band5	4182	3	NV	40	1.17	0.001399	±2.5	PASS
Band5	4182	3	NV	50	-0.10	-0.000120	±2.5	PASS
Band5	4182	4	NV	-30	3.00	0.003587	±2.5	PASS
Band5	4182	4	NV	-20	1.28	0.001530	±2.5	PASS
Band5	4182	4	NV	-10	3.05	0.003647	±2.5	PASS
Band5	4182	4	NV	0	-1.70	-0.002033	±2.5	PASS
Band5	4182	4	NV	10	-0.04	-0.000048	±2.5	PASS
Band5	4182	4	NV	20	0.75	0.000897	±2.5	PASS
Band5	4182	4	NV	30	-1.58	-0.001889	±2.5	PASS
Band5	4182	4	NV	40	0.84	0.001004	±2.5	PASS
Band5	4182	4	NV	50	-2.80	-0.003348	±2.5	PASS
Band5	4182	5	NV	-30	-0.76	-0.000909	±2.5	PASS
Band5	4182	5	NV	-20	1.87	0.002236	±2.5	PASS
Band5	4182	5	NV	-10	-0.15	-0.000179	±2.5	PASS
Band5	4182	5	NV	0	1.32	0.001578	±2.5	PASS
Band5	4182	5	NV	10	-1.20	-0.001435	±2.5	PASS
Band5	4182	5	NV	20	0.24	0.000287	±2.5	PASS
Band5	4182	5	NV	30	-0.95	-0.001136	±2.5	PASS

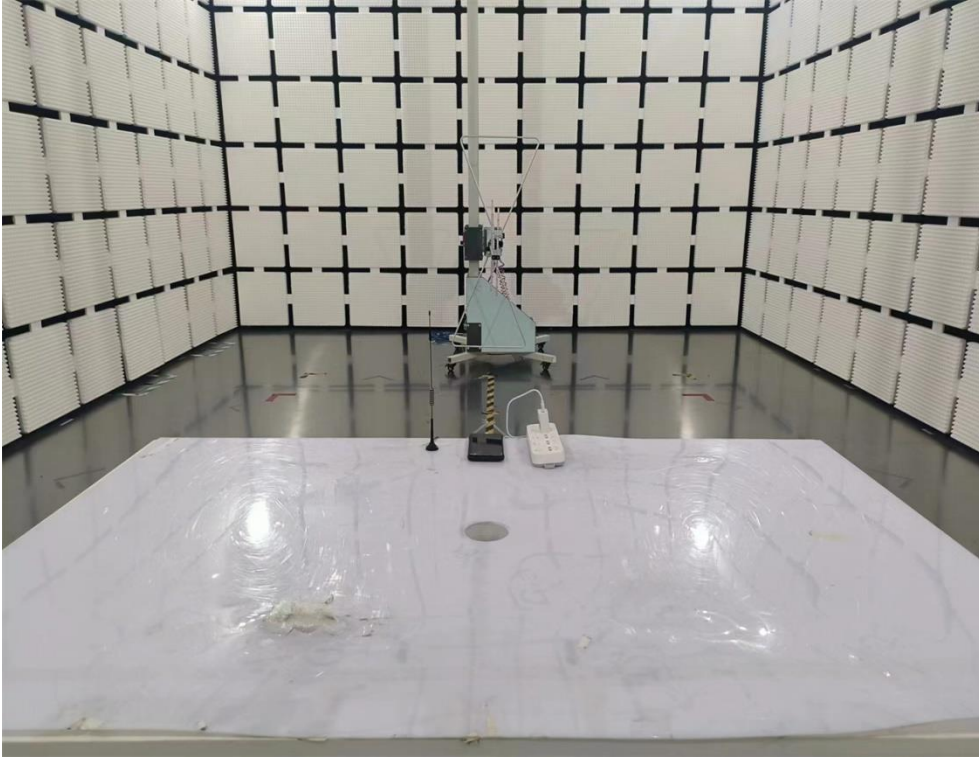
Band5	4182	5	NV	40	1.77	0.002116	±2.5	PASS
Band5	4182	5	NV	50	0.05	0.000060	±2.5	PASS
Band5	4233	1	NV	-30	-1.07	-0.001264	±2.5	PASS
Band5	4233	1	NV	-20	1.37	0.001618	±2.5	PASS
Band5	4233	1	NV	-10	1.84	0.002173	±2.5	PASS
Band5	4233	1	NV	0	0.99	0.001169	±2.5	PASS
Band5	4233	1	NV	10	3.56	0.004205	±2.5	PASS
Band5	4233	1	NV	20	1.66	0.001961	±2.5	PASS
Band5	4233	1	NV	30	-1.60	-0.001890	±2.5	PASS
Band5	4233	1	NV	40	1.42	0.001677	±2.5	PASS
Band5	4233	1	NV	50	-2.12	-0.002504	±2.5	PASS
Band5	4233	2	NV	-30	-1.26	-0.001488	±2.5	PASS
Band5	4233	2	NV	-20	1.28	0.001512	±2.5	PASS
Band5	4233	2	NV	-10	-0.34	-0.000402	±2.5	PASS
Band5	4233	2	NV	0	-2.30	-0.002717	±2.5	PASS
Band5	4233	2	NV	10	2.69	0.003177	±2.5	PASS
Band5	4233	2	NV	20	0.73	0.000862	±2.5	PASS
Band5	4233	2	NV	30	1.73	0.002043	±2.5	PASS
Band5	4233	2	NV	40	6.77	0.007997	±2.5	PASS
Band5	4233	2	NV	50	1.42	0.001677	±2.5	PASS
Band5	4233	3	NV	-30	0.41	0.000484	±2.5	PASS
Band5	4233	3	NV	-20	0.96	0.001134	±2.5	PASS
Band5	4233	3	NV	-10	2.09	0.002469	±2.5	PASS
Band5	4233	3	NV	0	2.18	0.002575	±2.5	PASS
Band5	4233	3	NV	10	-1.06	-0.001252	±2.5	PASS
Band5	4233	3	NV	20	2.84	0.003355	±2.5	PASS
Band5	4233	3	NV	30	0.68	0.000803	±2.5	PASS
Band5	4233	3	NV	40	2.55	0.003012	±2.5	PASS
Band5	4233	3	NV	50	0.36	0.000425	±2.5	PASS
Band5	4233	4	NV	-30	-2.37	-0.002799	±2.5	PASS
Band5	4233	4	NV	-20	-0.62	-0.000732	±2.5	PASS
Band5	4233	4	NV	-10	-2.52	-0.002977	±2.5	PASS
Band5	4233	4	NV	0	0.09	0.000106	±2.5	PASS
Band5	4233	4	NV	10	-2.36	-0.002788	±2.5	PASS
Band5	4233	4	NV	20	-1.72	-0.002032	±2.5	PASS
Band5	4233	4	NV	30	0.52	0.000614	±2.5	PASS
Band5	4233	4	NV	40	-1.24	-0.001465	±2.5	PASS



Band5	4233	4	NV	50	1.17	0.001382	±2.5	PASS
Band5	4233	5	NV	-30	-0.23	-0.000272	±2.5	PASS
Band5	4233	5	NV	-20	-1.00	-0.001181	±2.5	PASS
Band5	4233	5	NV	-10	3.15	0.003721	±2.5	PASS
Band5	4233	5	NV	0	0.38	0.000449	±2.5	PASS
Band5	4233	5	NV	10	-0.69	-0.000815	±2.5	PASS
Band5	4233	5	NV	20	3.08	0.003638	±2.5	PASS
Band5	4233	5	NV	30	0.79	0.000933	±2.5	PASS
Band5	4233	5	NV	40	1.07	0.001264	±2.5	PASS
Band5	4233	5	NV	50	3.35	0.003957	±2.5	PASS

**5 Test Setup Photo**

Radiated Emission



**6 Photos of EUT**





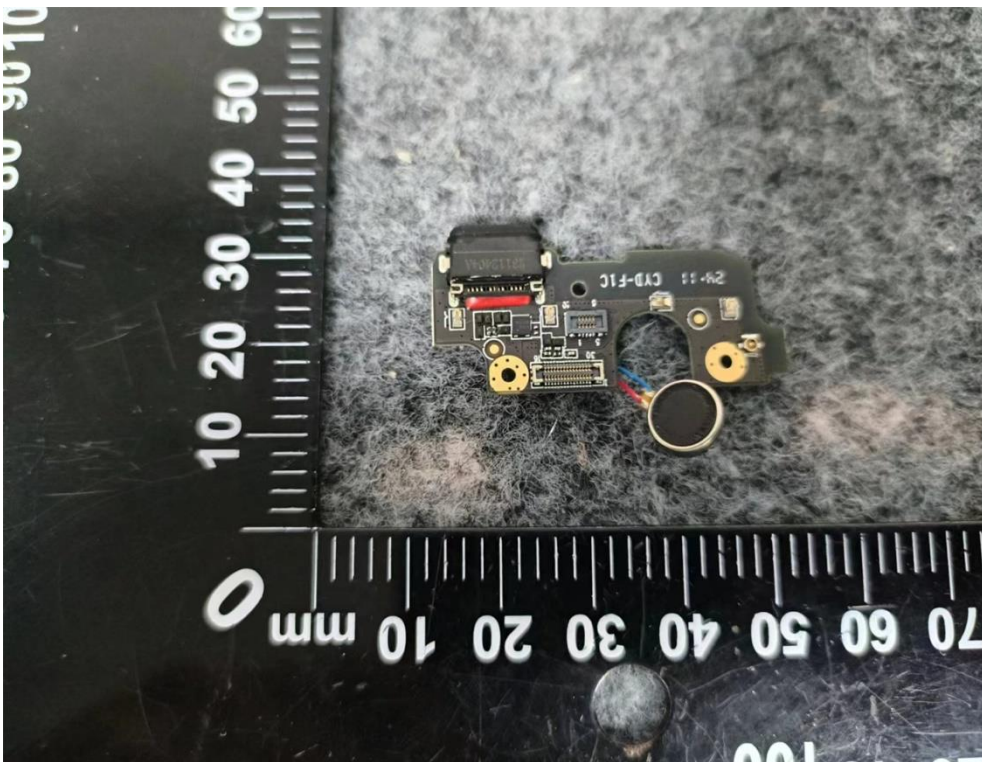
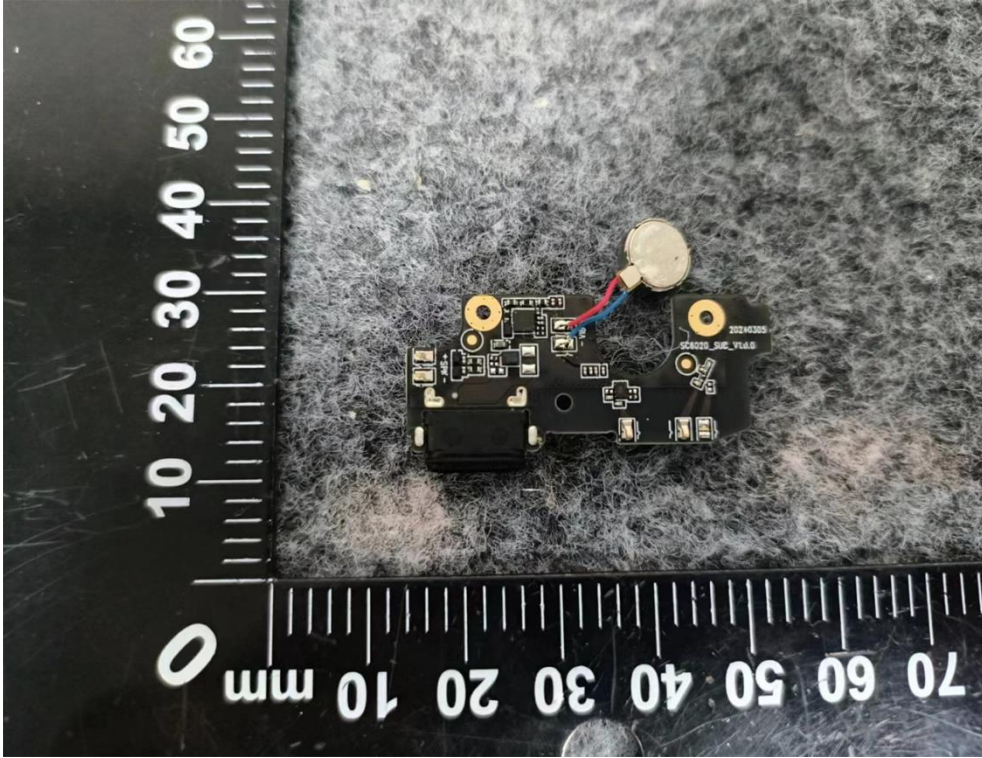


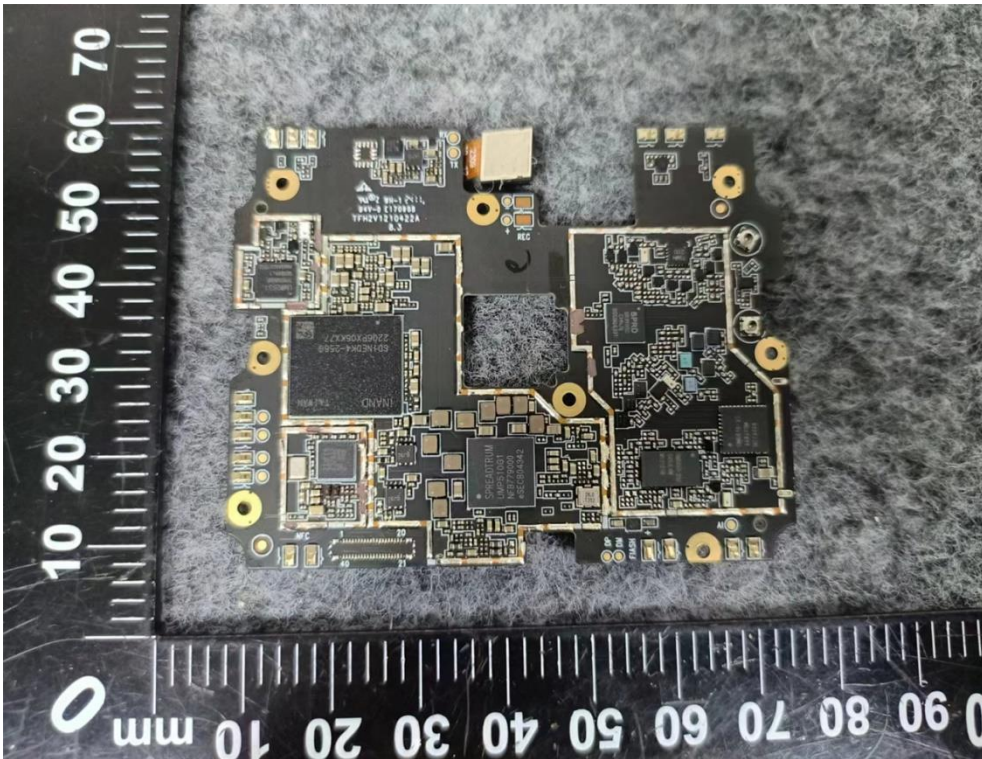
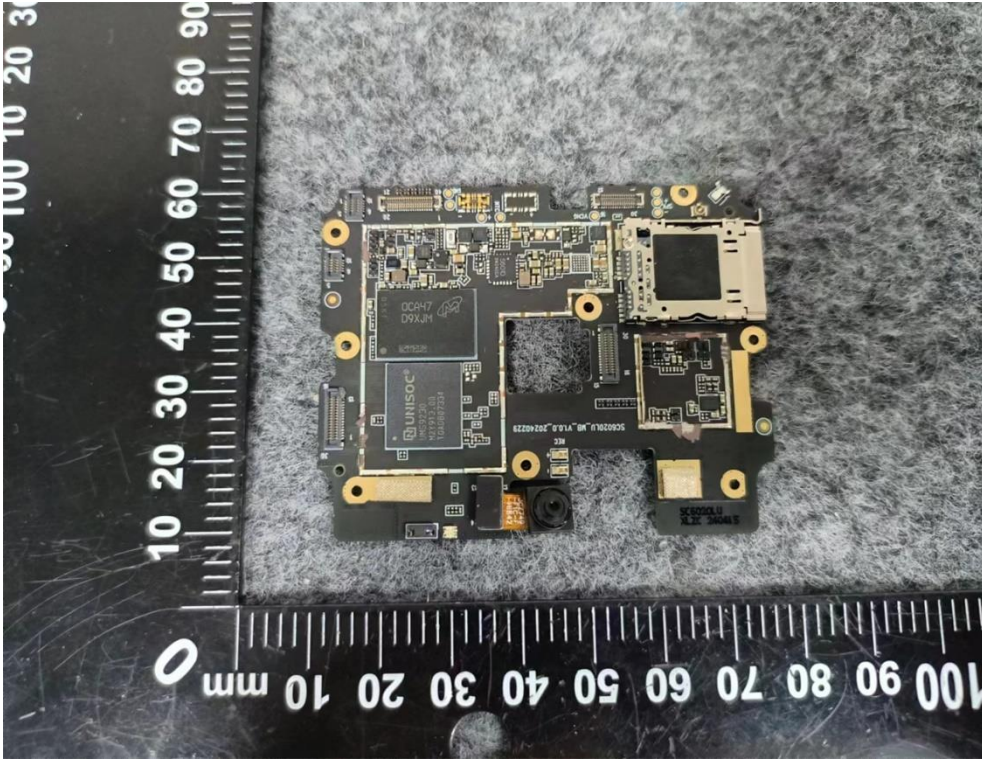












-----END OF REPORT-----