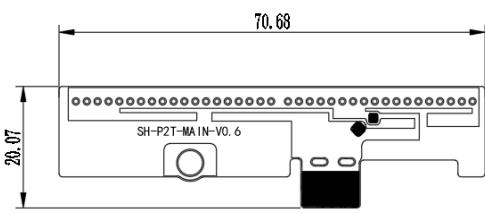
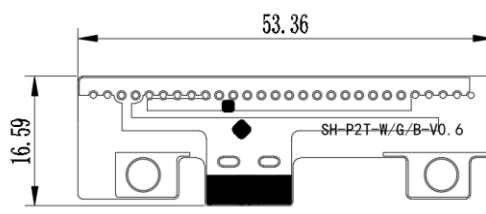


# Technical Specification

<b>AntennaMode</b>	P2T	<b>Manufactured</b>	Shenzhen 3Good Wireless Communication Co.,LTD.	
<b>Address</b>	Room501-508, Jinfulai Building No.49-1Dabao Road,BaoAn,ShenZhen, GuangDong			
<b>Size &amp; Picture</b>				
	main: 70.68*20.07mm PIFA	WGB: 53.36*16.59mm PIFA		

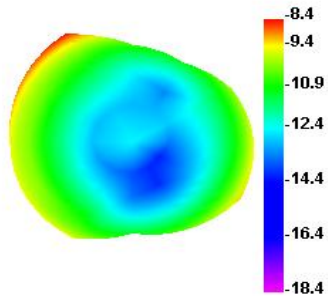




# Technical Specification

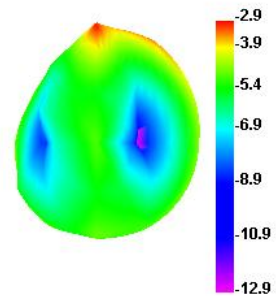
## MAIN 3-D Patten Plots

**700.000MHz**



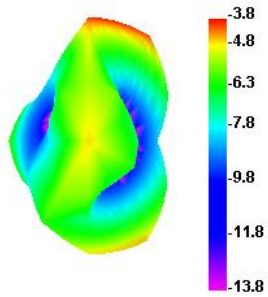
MAIN: 700Mhz

**800.000MHz**



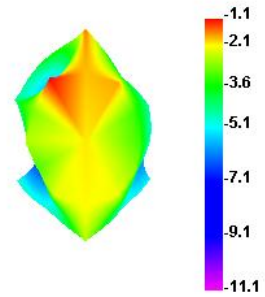
MAIN: 800Mhz

**900.000MHz**



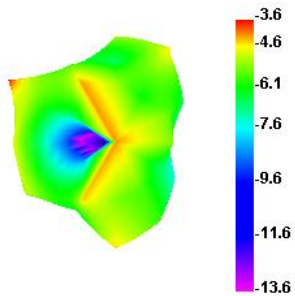
MAIN: 900Mhz

**1700.000MHz**



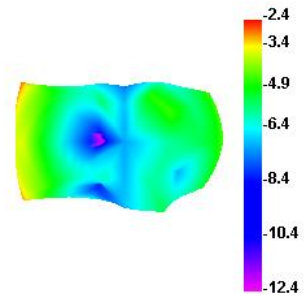
MAIN: 1700Mhz

**1900.000MHz**



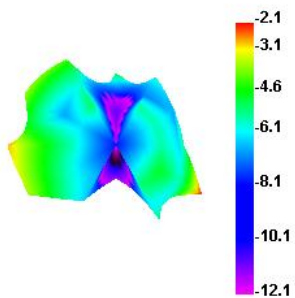
MAIN: 1900Mhz

**2100.000MHz**



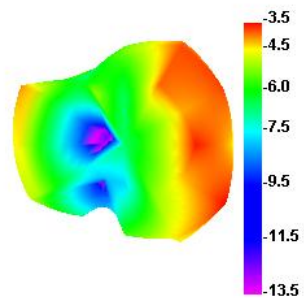
MAIN: 2100Mhz

**2400.000MHz**



MAIN: 2400Mhz

**2600.000MHz**

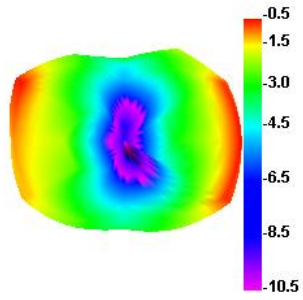


MAIN: 2600Mhz

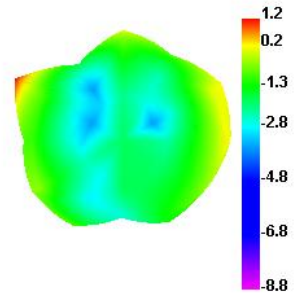
# Technical Specification

## WGB 3-D Patten Plots

1575.000MHz



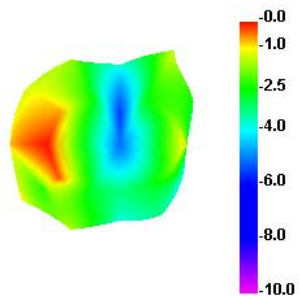
2450.000MHz



WBG: 1575Mhz

WBG: 2450Mhz

5500.000MHz



WBG: 5500Mhz