



1. Graphic for reference



Figure 2 0.8*20mmBT

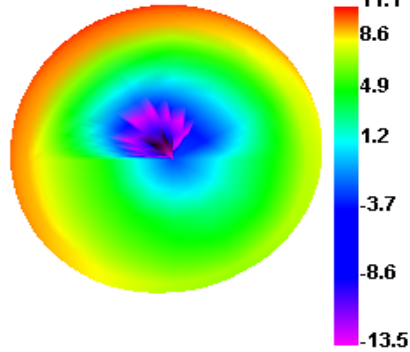
Name	ANTENNA
Model	LT13
Frequency	2.4Ghz
Input impedance	50Ω
Allowed power	5mW
Working temp.	-25 ~ +65 °C
Storage temp.	-40 ~ +85 °C
Weight	0.25g
Antenna gain 天线增益	-1dBi

2.OTA(Free Space)

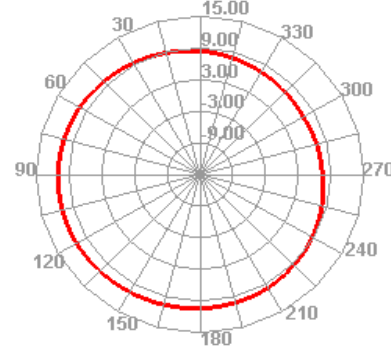
Channel	TRP (dBm)	TIS (dBm)
0	6.3	-91.1
39	6.5	-91.3
78	6.6	-91.2

3.Field

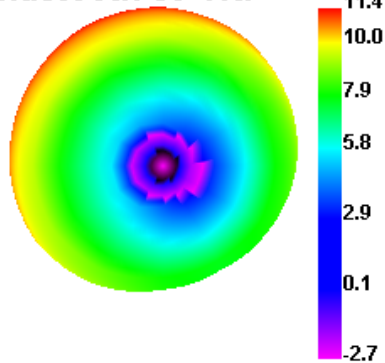
Bluetooth 0 TRP



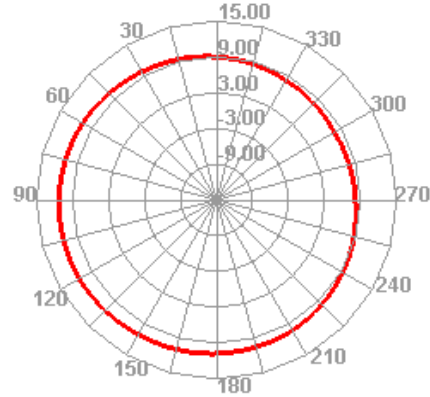
Bluetooth 0 TRP H



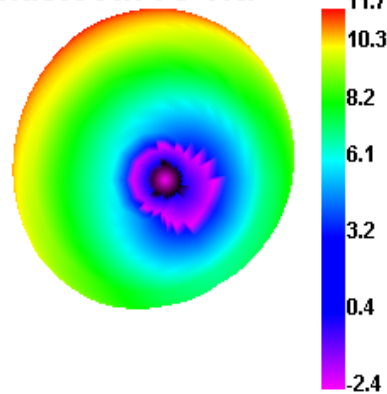
Bluetooth 39 TRP



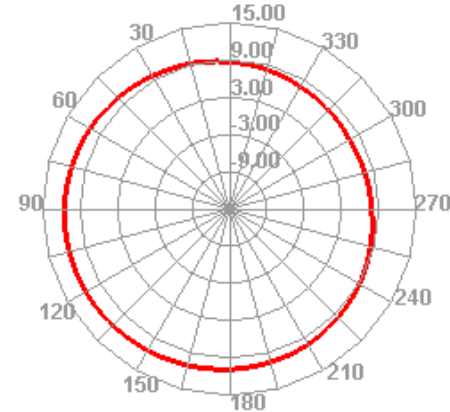
Bluetooth 39 TRP H



Bluetooth 78 TRP



Bluetooth 78 TRP H

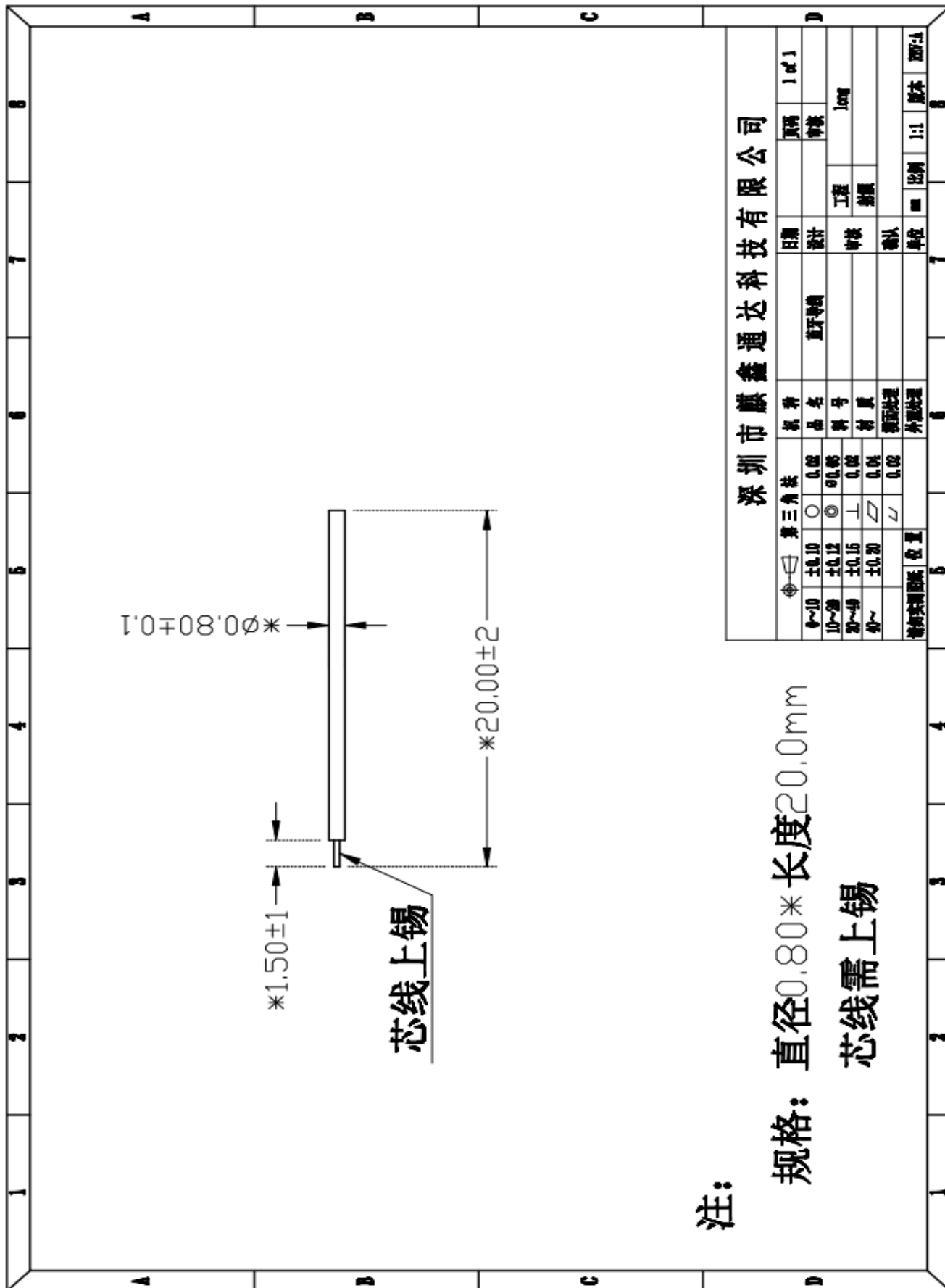


4. BT Test

Test term	Environment	Max pairing distance	BT Call distance	
BT	Office	16-18m	10-12m	



5. Blueprint



深圳市麒鑫通达科技有限公司									
第三角法	日期	页码	1 of 1						
φ~10	设计	审核							
±0.10	制图	工程	Jong						
±0.12	审核	材料							
±0.15	确认	表面处理							
±0.20	单位	比例	1:1		版本				
位置	比例		1:1		版本				