

反面

IP Camera

Quick Installation Guide

1.IP Camera Connection

Please connect IP camera with power adapter, refer to the picture below. Start-up time is about 1 minute.



Note: If Network 2.4GHz (b) (n) (not compatible with 5GHz). If the router supports both bands, please switch of 5GHz band. Set WLAN1 (RS(AE)S) (WLAN2 (RS(AE)S)) as encryption.

2 App download & Wi-Fi setup

2.1. Download app

A: Scan below QR code to download app.



Note: If the QR code not work, please search "Yasee" in Google Play (for android device) or App Store (for IOS device) to download it.

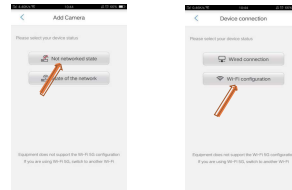
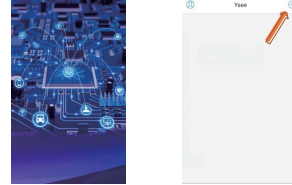
2.2. WlFi setup

2.2.1 Launch the app

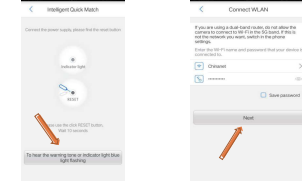


Version: W1.1

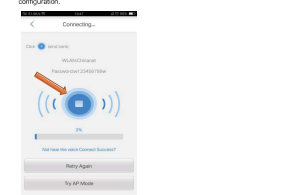
2.2.2 Click the symbol = to add new device, select "not network setup" configuration, please make sure your mobile have already connected to local wifi.



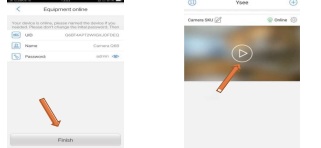
2.2.3 Make sure the device has been reset by hearing the warning tone or indicator light blue light flashing, then click the button and input correct Wi-Fi password, click "Next".



2.2.4 Turn up the mobile phone volume and get close to the device, then click "Next" to start configuration.



2.2.5 The device UID, Name and password will be shown when configuration finished, click "Finish" button to complete configuration. Click video button, then you can view real time storage.

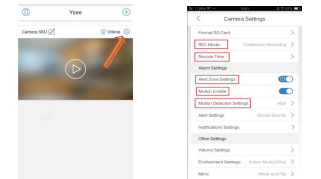


⚠️ Tip: The mobile phone must connect to local Wi-Fi network. (The default password is admin. For security reason, please change the default password after configuration.)

3. Recording & Alarm setting

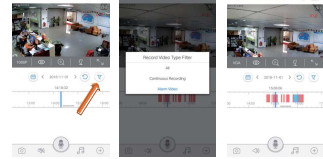
3.1 Insert SD card before power on

Click "Settings" for settings. Setup Motion Detection Settings, Motion Enable, Alert Zone Settings and REC mode as below:



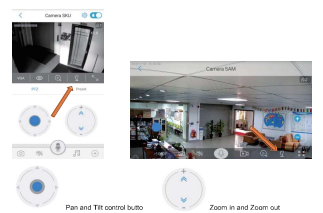
3.2 Select the alarm video through the timeline.

The red stripe area is the alarm video. Move the timeline to the red stripe area to watch the alarm video playback.



4. How to use zoom function

Click the PTZ control button, also you can click to get full screen's view.



5. FAQ

5.1. About TF card (Micro SD card)

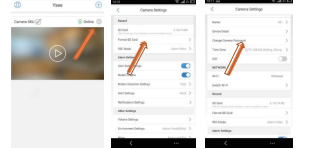
This camera not came with TF card, you need buy it. This camera supports most brand's TF card. We recommend you use high speed SanDisk TF card or Kingston TF card. Please format TF card after insert it into camera.

5.2 How to format TF card (Micro SD card)

1 Insert TF card into slot.
2 Run Yasee APP, find the camera settings.
3 Click "Format SD card" and confirm. It may take longer time for bigger capacity SD card. (If it shows TF card capacity is 0GB, please format the SD card manually.) see below picture 1& picture 2.

5.3 How to change camera password

Run Yasee APP, find the camera settings, Click "Change Camera Password", you will need to insert current password and new password then click "OK" to save settings. (If you forget your password, you can reset the camera by press the reset button for at least 5 seconds. After reset, the default password is admin.) See below picture 1& picture 2.



picture 1

picture 2

picture 3

5.4 How to close face tracking function

Run Yasee APP, find the camera settings, then find the PTZ detection function, turn it off.

FCC Warning:

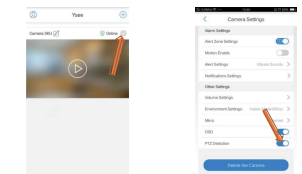
This equipment has been tested and found to comply with the limits for a Class B digital device. Pursuant to part 15 of the FCC Rules. These limits are designed to provide reasonable protection against harmful interference in a residential installation. This equipment generates, uses and can radiate radio frequency energy and, if not installed and used in accordance with the instructions, may cause harmful interference to radio communications. However, there is no guarantee that interference will not occur in a particular installation. If this equipment does cause harmful interference to radio or television reception, which can be determined by turning the equipment off and on, the user is encouraged to try to correct the interference by one or more of the following measures:

- Reorient or relocate the receiving antenna.
- Increase the separation between the equipment and receiver.
- Connect the equipment into an outlet on a circuit different from that to which the receiver is connected.
- Consult the dealer or an experienced radio/TV technician for help.

Caution: Any changes or modifications to this device not explicitly approved by manufacturer could void your authority to operate this equipment.

This device complies with part 15 of the FCC Rules. Operation is subject to the following two conditions: (1) This device may not cause harmful interference, and (2) this device must accept any interference received, including interference that may cause undesired operation.

This equipment complies with FCC radiation exposure limits set forth for an uncontrolled environment. This equipment should be installed and operated with minimum distance 20cm between the radiator and your body.



Warranty Card

Name	
Address	
Tel: _____ Post code	
Purchase address	
Purchase price	Purchase No.
Issue description	Model
Seller	Signature