



Order Number : GETEC-C1-20-651  
Test Report Number : GETEC-E3-20-083

---

## APPENDIX H : USER'S MANUAL



## OWNER'S MANUAL

# One:Quick Share

---

Please read the safety information carefully before using this product.

After reading this manual, keep it in an easily accessible location for future reference.

SC-00DA

[www.lg.com](http://www.lg.com)

Copyright © 2020 LG Electronics Inc. All Rights Reserved.

# TABLE OF CONTENTS

## **ONE:QUICK SHARE ..... 3**

- Signage Monitor ..... 3

## **SYSTEM REQUIREMENTS ..... 4**

## **PRODUCT FEATURES..... 6**

## **PREPARING ..... 7**

- Product Care..... 7
- Installation Guide ..... 8
- Parts and Buttons..... 9

## **HOW TO USE THE ONE:QUICK SHARE DONGLE..... 10**

- How to Pair LG Signage with the Dongle 10
- How to Install the Driver and PC App ..... 11
- How to Share the Screen ..... 15
- How to Use the PC App..... 16

## **TROUBLESHOOTING.....27**

## **PRODUCT SPECIFICATIONS..29**

# ONE:QUICK SHARE

One:Quick Share is a solution that connects to a PC to allow wireless sharing of image and audio.

One:Quick Share is compatible with LG Signage products. Up to four PC screens can be shared on a single Signage.

## Signage Monitor

For instance, at a conference, you can connect the One:Quick Share dongle to your laptop in order to display the content of your presentation on an LG Signage monitor.

When multiple individuals each use the One:Quick Share product, they can share their presentation materials with one another through a single Signage.

Listed below are the Signage models that support the One:Quick Share dongle's screen sharing features.

### List of Models Compatible with One:Quick Share

43/50/55/65/75/86UL3G

43/49/55/65UM3DG

43/49/55/65UH5F

43/49/55/65UH7F

43/49/55/65UM3F

43/49/55/65UM3DF

# SYSTEM REQUIREMENTS

## Operating System

	Minimum Requirements	Recommended Specifications
Microsoft Windows	Windows 7 SP1 64-bit or newer	Windows 10 V1709 64-bit or newer
Apple OSX	10.10.5 (Yosemite) or newer	10.15.6 (Catalina) or newer

## Memory

4 Gbyte or higher

## CPU

	Minimum Requirements (1366 x 768 16 fps / Audio)	Recommended Specifications ( Full HD 30 fps / Audio )
Intel	Core i 1st (Nehalem) Core i 2nd (Sandybridge) Core i 3rd (Sandybridge) Core i 4th (Haswell) Core i 5th (Broadwell)	Core i 6th (Sky Lake) Core i 7th (Kaby Lake) Core i 8th (Coffee Lake) Core i 9th (Coffee Lake) Core i 10th (Comet Lake / Ice Lake) Core i 11th (Tiger Lake)
AMD	A Series	Ryzen 1st Ryzen 2nd (Pinnacle, Colfax) Ryzen 2nd (Picasso) Ryzen 3rd (Matisse, Castle Peak) Ryzen 3rd (Renoir)

\* The One:Quick Share features may not work properly depending on your Windows/macOS version and PC specifications.

# PRODUCT FEATURES

- Share your PC screen easily using buttons by connecting the One:Quick Share Dongle to your PC.
- Control video mode and volume for LG Signage products using the One:Quick Share PC app.
- Connecting four One:Quick Share dongles to four PCs and screen-sharing through LG Signage will allow up to four screens to be shared at the same time.

# PREPARING

## Product Care

- Be careful not to get the product wet. If the product gets wet, there is a risk of a short circuit.
- Wipe gently with a dry cloth to remove dust.
- When cleaning, do not use volatile substances such as thinner, alcohol, or benzene. It may cause damage to the product surface or deteriorate product functionality.
- Do not disassemble, repair, or modify the product on your own. It may cause an accident, such as a fire or an electric shock.
- Do not pull the product's USB cable.



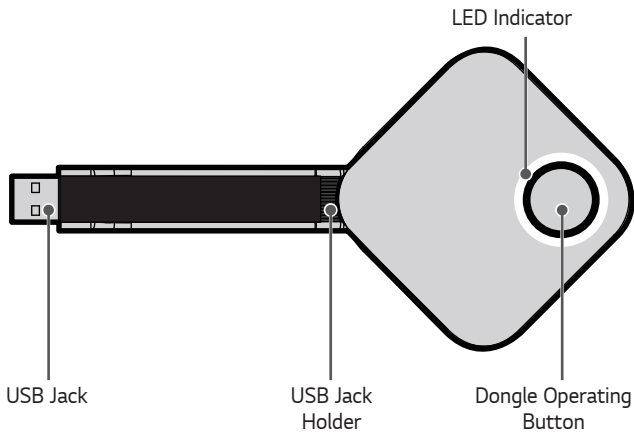
## Installation Guide

- Make sure you have enough space for connection before installing the product.
- Do not install the product in a dusty or humid place.
- Do not install the product under direct sunlight or in a hot place.
- Objects containing magnets, such as speakers, may affect the product's operation.
- Be sure to install the product in an environment with normal temperature and humidity. The recommended temperature for installation is 0°C to 40 °C.
- If there is any product nearby that uses strong electromagnetic waves, it may affect the operation of the product.

### NOTE

- The One:Quick Share model is a USB adapter compatible with some LG Signage products (or related products). For details, please refer to the "separately-sold materials" section in the user manual for the LG Signage (or related products) you purchased.
- Some models are not supported in certain countries.
- Supported models are subject to change without notice.
- The warranty for this product is valid for one year. If it is proven that the product has a defect despite normal use caused by the material or manufacturing technology, please contact the store in which you purchased the product. This warranty only covers the purchasing region and applies only to the original purchaser.

## Parts and Buttons

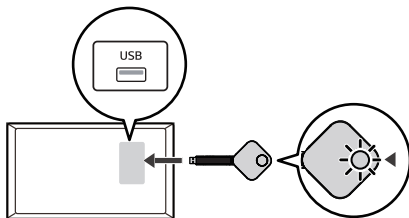


# HOW TO USE THE ONE:QUICK SHARE DONGLE

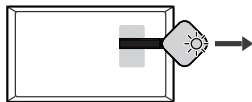
## How to Pair LG Signage with the Dongle

- Connect the One:Quick Share Dongle to the USB port on LG Signage.
- If the message [Successfully Paired] is displayed in the upper right corner of the LG Signage screen and the Dongle's LED light turns green within approximately 20 seconds of connection, this indicates that the Dongle is successfully set for your LG Signage.

1



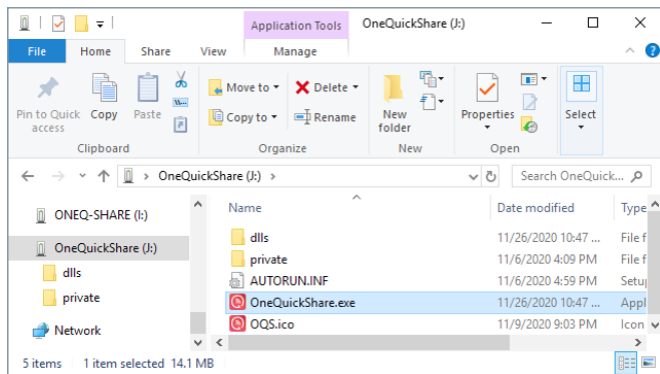
2



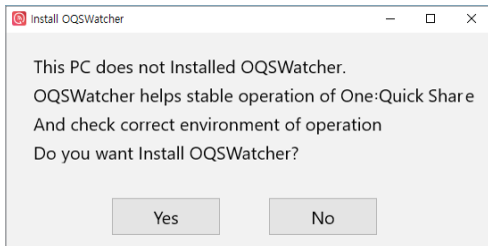
\* If the Dongle's LED light turns red within approximately twenty seconds of connection, connect the Dongle to the LG Signage USB port once again. If the red light still shows, contact the store where you purchased the Dongle.

## How to Install the Driver and PC App

- When you connect the Dongle to your PC, it will be recognised as a storage device and will appear as the One:QuickShare drive in the Explorer.

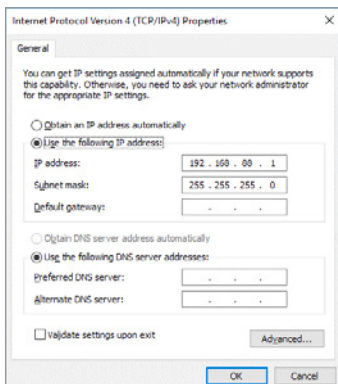
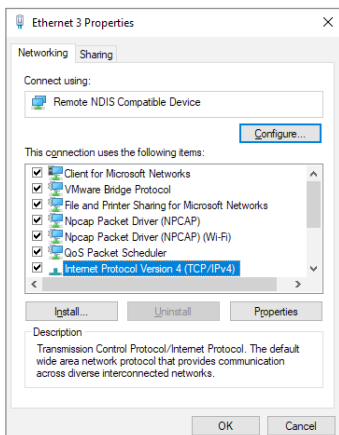


- When you run the One:QuickShare.exe file in the Explorer window, an installation message appears.

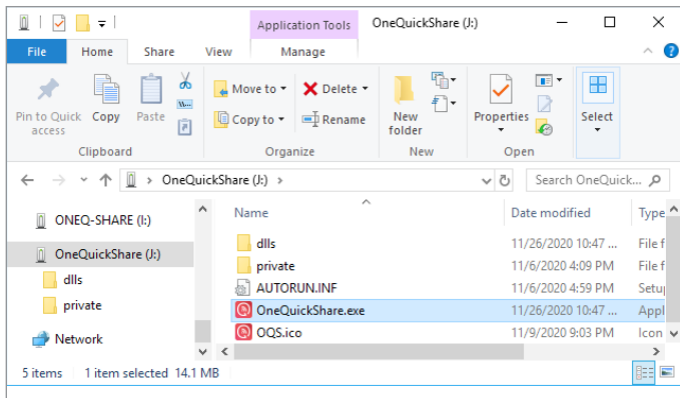


- Click the [Yes] button to automatically install the drivers and PC app.
- The amount of time it takes to install the app varies depending on the OS version and specifications of your PC.
- Installation may not be possible if the virus and threat protection settings are turned on in the security settings supported by the OS. Please turn the related settings off temporarily before installing the app.
- Certain anti-virus programs installed on the PC may prevent the app from being installed. Please turn the related settings off temporarily before installing the app.
- macOS may ask for your permission to capture your screen. In this case, you must grant permission for the PC app to work properly.

- For some OS, you can specify the IP settings in the network driver information and manually install the program included in the Dongle.
  - When you connect the Dongle to your PC, you will be able to see within one minute that the NDIS driver is installed on the adapter in the Network & Internet Settings menu.
  - Double-click the NDIS adapter to show the Properties menu.
  - Select the IP4 entry, and set the IP address to 192.168.88.1.
  - For more details on network settings, please refer to the Help section of the relevant operating system.



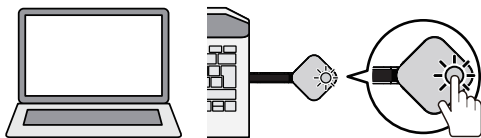
- Running the One:QuickShare.exe file in the Explorer window will manually install the PC app.



- If the app is already installed on the PC, it will be ready to start screen sharing.

## How to Share the Screen

- When you connect the Dongle to your PC, the yellow LED lights up within approximately 30 seconds to indicate it is ready to start screen sharing.
- Press the button on the Dongle (or the [Share] button on the PC app menu that has been brought up automatically) to display and share your PC's screen on the LG Signage screen.

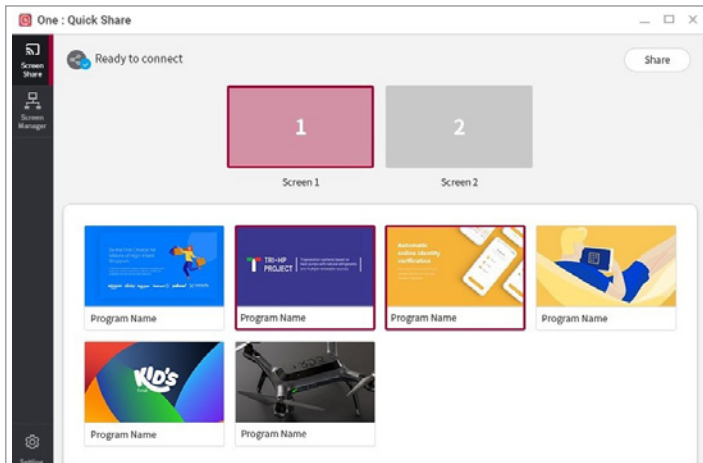


- If the Dongle is not connected to the Signage or PC app, the Dongle's red LED light will turn on, indicating that there is a problem.
- Check if the [SoftAP] settings have been switched to ON in the Signage monitor's [Network] menu. For more details on Signage monitor settings, please refer to the user manual of the relevant model.
- If you press the button on the Dongle for two seconds or longer while the screen is being shared, you can share the screen with two to four LG Signage displays.
- If you press the button on the Dongle (or the [stop share] button on the PC app menu) while the screen is being shared, screen sharing is turned off.



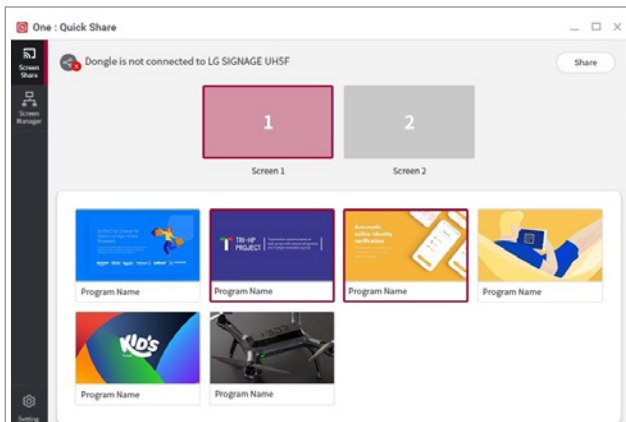
## How to Use the PC App

- Each time you connect the Dongle to the PC, the installed PC app menu screen is automatically displayed on the PC screen.
- Below is the PC app menu screen when the Dongle is properly connected to LG Signage and the PC app.

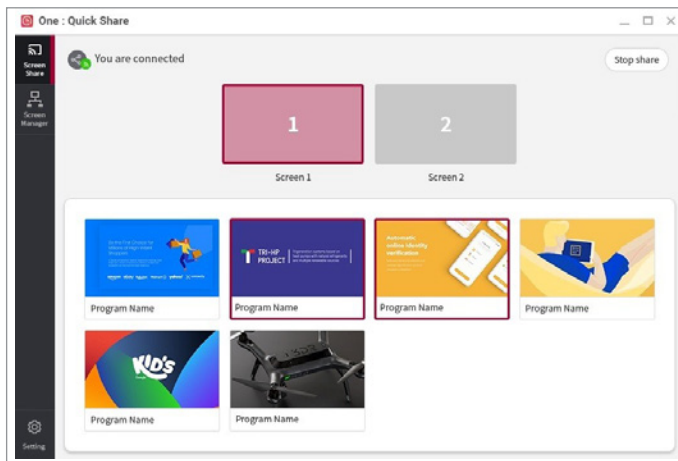
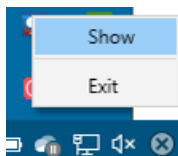




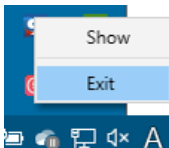
- If they are not connected properly, the [Ready to Connect] message changes to [Dongle is not connected to \*]. In this case, check if the [SoftAP] setting is turned on in the [Network] menu on the LG Signage monitor. If you still see the same message, try connecting the Dongle again.



- Right-click the app icon located on the system tray and select the [Show] option to show the PC app menu on the screen.

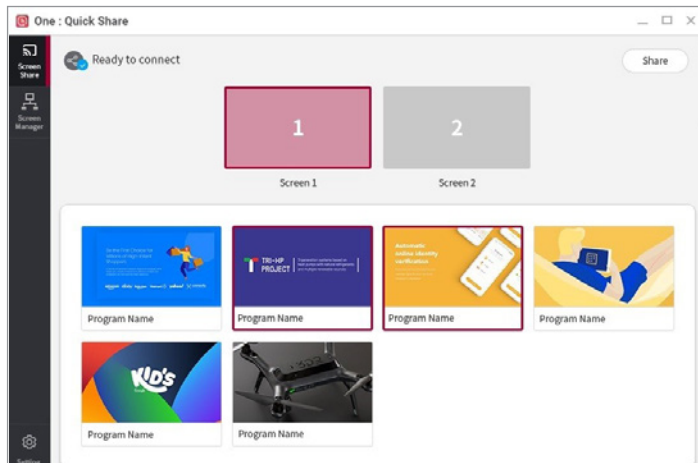


- Right-click the app icon located on the system tray and select [Exit] to close the PC app.



## PC App Screen Share Menu

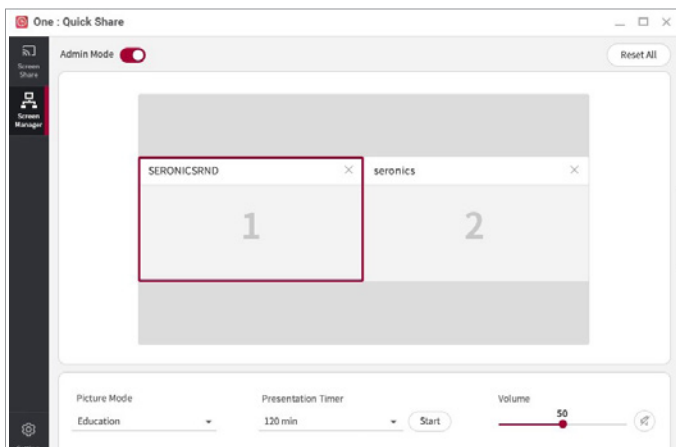
- Icons and texts in the screen share menu indicate the current connection and operation status.
- Press the [Share] button on the top right to share or stop sharing the PC screen on the LG Signage screen.



- In the upper pane of the menu, you can select the screen on the PC to which the Dongle is connected.
- In the lower pane of the menu, other programs currently running are shown, and you can select the desired program for which to share the screen.
- If you are screen sharing for a program and click the [Share] button for the selected program, the program will be automatically switched to full screen mode and the screen will be shared on the LG Signage screen.
- When screen sharing for a program, the LG Signage screen may not show anything, depending on the type of the program.

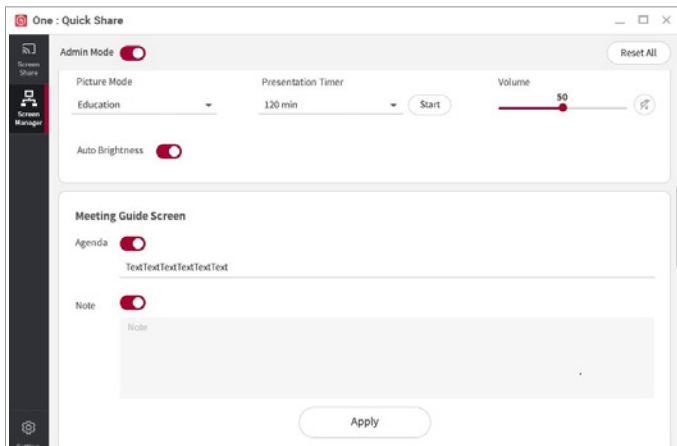
## [Screen Manager] Menu on the PC App

- The [Screen Manager] menu is shown below.



- [Admin Mode]
  - If you are the host of the meeting, you can set the screen to share in [Admin Mode]. You can also make settings for [Picture Mode], [Presentation Timer], and [Volume] as well as [Agenda] and [Note] for LG Signage in the [Meeting Guide Screen] menu.
- [Reset All]
  - You can use this feature to stop connections to all PCs being screen shared on the LG Signage in [Admin Mode].
- Display area of the screens being shared
  - Information for the PC screen being shared is displayed in a grid of up to two rows and two columns, which can be reordered by dragging and dropping. You can also cancel the sharing of other PC screens.

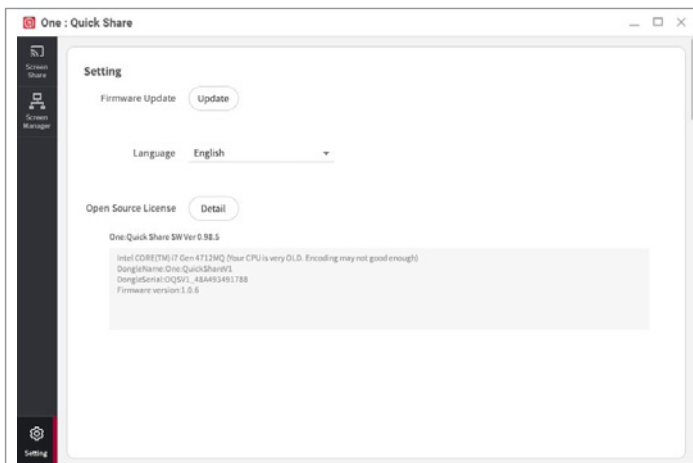




- [Picture Mode]
  - You can set the video mode of the screen on LG Signage.
- [Auto Brightness]
  - You can set the level of the automatic brightness of the LG Signage screen.
- [Presentation Timer]
  - You can set the presentation time of the presenter.
- [Volume]
  - You can adjust the speaker volume of your LG Signage.
  - Click the speaker icon to mute or unmute.
- [Meeting Guide Screen]
  - You can enter the [Agenda] and [Note] of the meeting to show them on the LG Signage screen.

## PC App Setting Menu

- This is the PC App setting menu.



- [Firmware update]
  - You can update the Dongle and the PC app.
- [Language]
  - You can set your preferred language.
- [Open Source Licence]
  - Read open source licence compliance information here. This product complies with the requirements of all open sources used in the development process.
- PC App version
  - You can check the PC app version information.

# TROUBLESHOOTING

## When the PC screen connected to the Dongle is not displayed

- Check if the Dongle is correctly inserted into the PC USB terminal.
- Check if the [SoftAP] settings have been switched to ON in the LG Signage monitor's [Network] menu. For more details on Signage monitor settings, please refer to the user manual of the relevant model.
- If there are other wireless devices around LG Signage, they may interfere with communication.

## When there is a delay in the image or the sound cuts out momentarily

- Image and audio output may not work properly on a PC whose specifications are too low or whose OS version is too old. Please refer to the system requirements section.
- If there is another wireless device in the vicinity of the product, it may interfere with communication and cause problems in the image and audio output.
- Place LG Signage and the PC you are sharing the screen from close to each other and try again.

**When there is no audio output**

- Check if the sound card is set correctly on the PC to which the Dongle is connected. (If your PC is a desktop, the speaker must be connected to the PC for the sound card to work properly.)
- Audio output is not supported on macOS. (This feature is subject to change in the future.)

**Error description**

- Cannot detect USB Dongle
  - Check if the Dongle is properly connected to the PC.
  - If the same message is displayed even after reconnecting the Dongle to the PC, contact the store in which you purchased it.
- Connection error has occurred with <Signage Monitor Name>
  - Check if the [SoftAP] settings have been switched to ON in the LG Signage monitor's [Network] menu. For more details on Signage monitor settings, please refer to the user manual of the relevant model.
  - If there are other wireless devices near LG Signage, they may interfere with communication.

# PRODUCT SPECIFICATIONS

Product specifications are subject to change without prior notice for quality improvement purposes.

Model	SC-00DA	
Dimensions (Width x Height x Depth)	63.8 mm x 63.8 mm x 13.5 mm (USB cable 85.5mm)	
Weight	46 g	
Power Supply	5 V DC (500 mA)	
Power Consumption	Maximum : 2.5 W Standard : 1.5 W	
Interface	USB 2.0	
Security	WPA2	
Environmental Conditions	Operating Temperature	0 °C to 40 °C
	Storage Temperature	-20 °C to 60 °C
	Storage Humidity	0 % to 90 %

- This product is intended for connection to USB port source complying with requirement of limited power source ANNEX Q in IEC/EN 62368-1.



The model and serial number of the product are located on the back and on one side of the product. Record them below in case you ever need service.

MODEL \_\_\_\_\_

SERIAL NO. \_\_\_\_\_

Temporary noise is normal when powering ON or OFF this device.

# Printing Specification

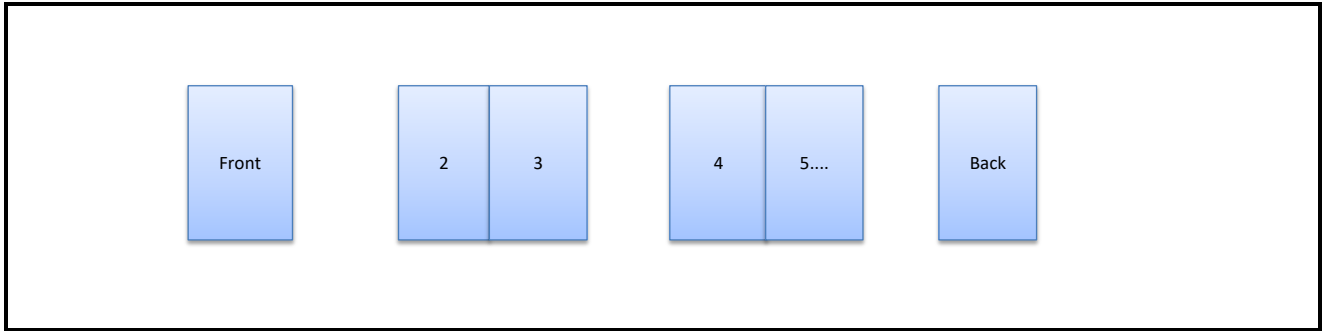
## 1. Model Description

Model/Item Name	: <b>Regulatory book</b>	Brand name	: <b>LG</b>
Suffix	: <b>WW</b>	Product	: <b>SIGNAGE</b>
		Part number	: <b>MFL71431820</b>
		(Revision number)	: <b>(REV00)</b>

## 2. Printing Specification

1. Trim size (Format) (W X H)	: <b>110 mm x 150 mm</b>		
2. Printing colors			
• Cover	: <b>1 Color (Black)</b>	• Inside	: <b>1 Color (Black)</b>
3. Stock (Paper)			
• Cover	: <b>Coated, Snow white paper 120 g/m<sup>2</sup></b>	• Inside	: <b>Uncoated, wood-free paper 60 g/m<sup>2</sup></b>
4. Bindery	: <b>Perfect binding</b>	5. Number of pages	: <b>72</b>
6. Language	: <b>ENG/GER/FRE/FRE_CA/ITA/SPA/SPA_LA/POR/POR_BR/DUT/RUS/KOR/SWE/FIN/DAN/GRE/SLK/CZE/SCR/POL/HUN/EST/LAV/LIT/TUR/JPN/THA/ARA/IND/KAZ/NOR/UKR/UZB/CHI/TWN(35)</b>		

## 3. Pagination sheet



## 4. Origin Notification

<p><a href="http://www.lg.com">www.lg.com</a></p> <p>P/No : MFL69707613 (1708-REV03)</p> <p>Copyright © 2017 LG Electronics Inc. All Rights Reserved.</p> <p style="border: 1px solid red; display: inline-block; padding: 2px;">Printed in Korea</p>	<p>[Country Name]</p> <p>LGERS/ LGEMX : Mexico</p> <p>LGEMK : Korea</p> <p>LGEMA : Poland</p> <p>LGEND : China</p> <p>Others : Each Country name.</p>	
<p>Changes the Country name.</p> <p>Printed in [Country Name]</p>		
NOTE	<p>[Restriction of Hazardous Substances ]</p> <p>Hazardous substances on this product should be satisfied by substance regulation of Level A-I, A-II, SVHC according to LG(52)B-5011 standard.</p> <p>Especially, Part should be followed and controlled the following specification.</p> <p>(1) Hazardous substances test report should be submitted when part certification test and first mass production.</p> <p>(2) Especially, Don't use or contain lead (Pb) and cadmium (Cd) in ink.</p>	

## 5. Changes

REV07				
REV06				
REV05				
REV04				
REV03				
REV02				
REV01				
REV00	10/30/2020	Ungkee Choi		Checked : Eunhye Jeong
				Approved : Jongok Kim
Rev. Number	MM/DD/YYYY	Signature	ECO Number	Change Contents





# REGULATORY INFORMATION

(INFORMACIÓN REGULATIVA)

---



\* M F L 7 1 4 3 1 8 2 0 \*

(2011-REV00)

[www.lg.com](http://www.lg.com)

## FCC Compliance Statement

This equipment has been tested and found to comply within the limits of a Class B digital device pursuant to Part 15 of the FCC Rules. These limits are designed to provide reasonable protection against harmful interference in a residential installation.

This equipment generates, uses, and can radiate radio frequency energy and if not installed and used in accordance with the instructions, may cause harmful interference to radio communications. However, there is no guarantee that interference will not occur in a particular installation.

If this equipment does cause harmful interference to radio or television reception (which can be determined by turning the equipment on and off), the user is encouraged to try to correct the interference by using one or more of the following measures:

- Reorient or relocate the receiving antenna.
- Increase the separation between the equipment and the receiver.
- Connect the equipment into an outlet on a circuit different from that to which the receiver is connected.
- Consult the dealer or an experienced radio/TV technician for help.

Caution: Changes or modifications not expressly approved by the party

responsible for compliance could void the user's (or your) authority to operate the equipment. Only peripherals (digital input/output devices, terminals, printers, etc.) certified to comply with the Class B limits may be attached to this product. Operation with non-certified peripherals is likely to result in interference to radio and TV reception. Only shielded signal cables may be used with this System.

### Indoor use only

FCC Caution: Any changes or modifications not expressly approved by the party responsible for compliance could void the user's authority to operate this equipment and for indoor use only, use outdoors or in other modes not covered by this manual may violate the FCC regulation and violate the user authority to use the product. Specially, within the 5.15-5.25 GHz band, U-NII device is restricted to indoor operations to reduce any potential for harmful interference to co-channel MSS operations.

## **FCC RF Radiation Exposure Statement:**

This equipment complies with FCC radiation exposure limits set forth for an uncontrolled environment. This transmitter must not be co-located or operating in conjunction with any other antenna or transmitter.

## **IFT (Para México) [Para tener acceso a la función inalámbrica (WLAN, Bluetooth,...)]**

La operación de este equipo está sujeta a las siguientes dos condiciones:

- 1 Es posible que este equipo o dispositivo no cause interferencia perjudicial y
- 2 Este equipo o dispositivo debe aceptar cualquier interferencia, incluyendo la que pueda causar su operación no deseada.

## **CANADA(IC) Notice**

### **Industry Canada Statement**

**(For Canada)**

**[For having wireless function (WLAN, Bluetooth,...)]**

This device contains licence-exempt transmitter(s)/receiver(s) that comply

with Innovation, Science and Economic Development Canada's licence-exempt RSS(s). Operation is subject to the following two conditions:

- (1) This device may not cause interference.
- (2) This device must accept any interference, including interference that may cause undesired operation of the device.

### **Avis d'Industrie Canada**

**(Pour le Canada)**

**[Pour la fonction sans fil (WLAN, Bluetooth, etc.)]**

L'émetteur/récepteur exempt de licence contenu dans le présent appareil est conforme aux CNR d'Innovation, Sciences et Développement économique Canada applicables aux appareils radio exempts de licence. L'exploitation est autorisée aux deux conditions suivantes :

- (1) L'appareil ne doit pas produire de brouillage;
- (2) L'appareil doit accepter tout brouillage radioélectrique subi, même si le brouillage est susceptible d'en compromettre le fonctionnement.

## IC Radiation Exposure Statement

(For Canada)

**[For having wireless function (WLAN, Bluetooth,...)]**

This equipment complies with IC radiation exposure limits set forth for an uncontrolled environment. This equipment should be installed and operated with minimum distance 20 cm (7.8 inches) between the antenna & your body.

NOTE: THE MANUFACTURER IS NOT RESPONSIBLE FOR ANY RADIO OR TV INTERFERENCE CAUSED BY UNAUTHORIZED MODIFICATIONS TO THIS EQUIPMENT. SUCH MODIFICATIONS COULD VOID THE USER'S AUTHORITY TO OPERATE THE EQUIPMENT.

## Avis d'Industrie Canada sur l'exposition aux rayonnements

(Pour le Canada)

**[Pour la fonction sans fil (WLAN, Bluetooth, etc.)]**

Cet appareil est conforme aux limites d'exposition aux rayonnements d'Industrie Canada pour un environnement non contrôlé. Cet appareil doit être installé de façon à garder une distance minimale de 20 cm (7,8 po) entre la source de rayonnement et votre corps.

REMARQUE : LE FABRICANT N'EST PAS RESPONSABLE DES INTERFÉRENCES RADIOÉLECTRIQUES CAUSÉES PAR DES MODIFICATIONS NON AUTORISÉES APPORTÉES À CET APPAREIL. DE TELLES MODIFICATIONS POURRAIENT ANNULER L'AUTORISATION ACCORDÉE À L'UTILISATEUR DE FAIRE FONCTIONNER L'APPAREIL.

## RSS-247 Requirement

(For Canada)

**[For product having the wireless function using 5 GHz frequency bands]**

- (i) the device for operation in the band 5150–5250 MHz is only for indoor use to reduce the potential for harmful interference to co-channel mobile satellite systems;
- (ii) for devices with detachable antenna(s), the maximum antenna gain permitted for devices in the bands 5250-5350 MHz and 5470-5725 MHz shall be such that the equipment still complies with the e.i.r.p. limit;
- (iii) for devices with detachable antenna(s), the maximum antenna gain permitted for devices in the band 5725-5850 MHz shall be such that the equipment still complies with the e.i.r.p. limits as appropriate; and
- (iv) [for devices operating in the band 5250-5350 MHz having an e.i.r.p. greater than 200 mW] antenna type(s), antenna models(s), and worst-

case tilt angle(s) necessary to remain compliant with the e.i.r.p. elevation mask requirement set forth in section 6.2.2.3 of RSS-247 shall be clearly indicated.

Users should also be advised that high-power radars are allocated as primary users (i.e. priority users) of the bands 5250-5350 MHz and 5650-5850 MHz and that these radars could cause interference and/or damage to LE-LAN devices.

### **Exigences du CNR-247**

**(Pour le Canada)**

**[Pour les produits ayant la fonction sans fil utilisant des bandes de fréquences de 5 GHz]**

- (i) les dispositifs fonctionnant dans la bande de 5 150 à 5 250 MHz sont réservés uniquement pour une utilisation à l'intérieur afin de réduire les risques de brouillage préjudiciable aux systèmes de satellites mobiles utilisant les mêmes canaux;
- (ii) pour les dispositifs munis d'antennes amovibles, le gain maximal d'antenne permis pour les dispositifs utilisant les bandes de 5 250 à 5 350 MHz et de 5 470 à 5 725 MHz doit être conforme à la limite de la p.i.r.e.;
- (iii) pour les dispositifs munis d'antennes amovibles, le gain maximal d'antenne

permis (pour les dispositifs utilisant la bande de 5 725 à 5 850 MHz) doit être conforme à la limite de la p.i.r.e. spécifiée, selon le cas;

- (iv) [pour des dispositifs fonctionnant dans la bande de 5 250 à 5 350 MHz ayant une p.i.r.e. de plus de 200 mW], les types d'antennes (s'il y en a plusieurs), les numéros de modèle de l'antenne et les pires angles d'inclinaison nécessaires pour rester conforme à l'exigence de la p.i.r.e. applicable au masque d'élévation, énoncée à la CNR-247 section 6.2.2.3, doivent être clairement indiqués.

Les utilisateurs doivent également savoir que les radars de grande puissance sont attribués en tant qu'utilisateurs principaux (c'est-à-dire les utilisateurs prioritaires) des bandes de 5 250 à 5 350 MHz et de 5 650 à 5 850 MHz et que ces radars peuvent causer des interférences avec les appareils LE-LAN et/ou les endommager.

**Supplier's Declaration of Conformity**

Trade Name	LG
Responsible Party	LG Electronics USA, Inc.
Address	111 Sylvan Avenue, North Building, Englewood Cliffs, NJ 07632
E-mail	lg.environmental@lge.com

**Déclaration de conformité du fournisseur**

Appellation commerciale	LG
Partie responsable	LG Electronics USA, inc.
Adresse	111, Sylvan Avenue, North Building, Englewood Cliffs, NJ 07632
Courriel	lg.environmental@lge.com

## ANATEL (Para Brasil)

### Certificado ANATEL



TODOS OS AJUSTES DE RF,  
JÁ FORAM CALIBRADOS NO  
PRÓPRIO MÓDULO DE RF.

MÓDULO WI-FI / BLUETOOTH  
MODELO: LGSBWAC72

Este produto contém a placa LGSBWAC72 código  
de homologação da ANATEL 04854-16-09946.



04854-16-09946

Este produto está homologado pela ANATEL,  
de acordo com os procedimentos  
regulamentados pela Resolução 242/2000, e  
atende aos requisitos técnicos aplicados.

Para maiores informações, consulte o site da  
ANATEL: [www.anatel.gov.br](http://www.anatel.gov.br)

Este equipamento não tem direito à  
proteção contra interferência prejudicial  
e não pode causar interferência em  
sistemas devidamente autorizados.

## Taiwan

[關於具有無線功能 (無線區域網路、藍牙、...)]  
取得審驗證明之低功率射頻器材，非經核准，  
公司、商號或使用者均不得擅自變更頻率、  
加大功率或變更原設計之特性及功能。  
低功率射頻器材之使用不得影響飛航安全及干擾  
合法通信；經發現有干擾現象時，應立即停用，  
並改善至無干擾時方得繼續使用。  
前述合法通信，指依電信管理法規定作業之無線  
電通信。低功率射頻器材須忍受合法通信或工業、  
科學及醫療用電波輻射性電機設備之干擾。

應避免影響附近雷達系統之操作。  
高增益指向性天線只得應用於固定式點對點系統



## EU Conformity Notice:



### Declaration of Conformity

#### ENGLISH

[For Equipment Under Radio Equipment Directive]

Hereby, LG Electronics declares that the radio equipment type [One:Quick Share] is in compliance with Directive 2014/53/EU. The full text of the EU declaration of conformity is available at the following internet address:

<http://www.lg.com/global/support/cedoc/cedoc#>

LG Electronics European Shared Service Center B.V.  
Krijgsman 1  
1186 DM Amstelveen  
The Netherlands

The use of the 5150 – 5350 MHz band is restricted to indoor use only. This restriction exists in the countries Belgium (BE), Bulgaria (BG), Czech Republic (CZ), Denmark (DK), Germany (DE), Estonia (EE), Ireland (IE), Greece (EL), Spain (ES), France (FR), Croatia (HR), Italy (IT), Cyprus

(CY), Latvia (LV), Lithuania (LT), Luxembourg (LU), Hungary (HU), Malta (MT), Netherlands (NL), Austria (AT), Poland (PL), Portugal (PT), Romania (RO), Slovenia (SI), Slovakia (SK), Finland (FI), Sweden (SE), Northern Ireland (UK(NI)), Switzerland (CH), Iceland (IS), Liechtenstein (LI), Norway (NO) and United Kingdom (UK). (For Wi-Fi/Bluetooth built-in model or Wi-Fi built-in model)

#### DEUTSCH

[Für Geräte, die der Richtlinie für Funktechnik entsprechen]

Hiermit erklärt LG Electronics, dass der Funkanlagentyp [Eins: Schnellteilen] der Richtlinie 2014/53/EU entspricht. Der vollständige Text der EU-Konformitätserklärung ist unter der folgenden Internetadresse verfügbar:

<http://www.lg.com/global/support/cedoc/cedoc#>

LG Electronics European Shared Service Center B.V.  
Krijgsman 1  
1186 DM Amstelveen  
The Netherlands

Die Nutzung des Frequenzbands 5150 – 5350 MHz ist auf den Innenbereich

beschränkt. Diese Einschränkungen gelten in den Ländern Belgien (BE), Bulgarien (BG), Tschechien (CZ), Dänemark (DK), Deutschland (DE), Estland (EE), Irland (IE), Griechenland (EL), Spanien (ES), Frankreich (FR), Kroatien (HR), Italien (IT), Zypern (CY), Lettland (LV), Litauen (LT), Luxemburg (LU), Ungarn (HU), Malta (MT), Niederlande (NL), Österreich (AT), Polen (PL), Portugal (PT), Rumänien (RO), Slowenien (SI), Slowakei (SK), Finnland (FI), Schweden (SE), Nordirland (UK(NI)), Schweiz (CH), Island (IS), Liechtenstein (LI), Norwegen (NO) und Vereinigtes Königreich (UK). (Für Modelle mit eingebautem Wi-Fi/Bluetooth oder Modelle mit eingebautem Wi-Fi)

### FRANÇAIS

[Pour les équipements dépendant de la directive sur les équipements radio] Le soussigné, LG Electronics, déclare que l'équipement radioélectrique du type [Partage rapide en un clic] est conforme à la directive 2014/53/UE. Le texte complet de la déclaration UE de conformité est disponible à l'adresse internet suivante:

*<http://www.lg.com/global/support/cedoc/cedoc#>*

LG Electronics European Shared Service Center B.V.

Krijgsman 1  
1186 DM Amstelveen  
The Netherlands

L'utilisation de la bande 5150 - 5350 MHz est limitée à une utilisation en intérieur uniquement. Cette restriction existe dans les pays suivants : Belgique (BE), Bulgarie (BG), République tchèque (CZ), Danemark (DK), Allemagne (DE), Estonie (EE), Irlande (IE), Grèce (EL), Espagne (ES), France (FR), Croatie (HR), Italie (IT), Chypre (CY), Lettonie (LV), Lituanie (LT), Luxembourg (LU), Hongrie (HU), Malte (MT), Pays-Bas (NL), Autriche (AT), Pologne (PL), Portugal (PT), Roumanie (RO), Slovénie (SI), Slovaquie (SK), Finlande (FI), Suède (SE), Irlande du Nord (UK(NI)), Suisse (CH), Islande (IS), Liechtenstein (LI), Norvège (NO) et Royaume-Uni (UK). (Pour les modèles avec Wi-Fi/Bluetooth intégrés ou les modèles avec Wi-Fi intégrés)

**ITALIANO**

[Apparecchi conformi alla direttiva sulle apparecchiature radio]

Il fabbricante, LG Electronics, dichiara che il tipo di apparecchiatura radio [Condivisione rapida] è conforme alla direttiva 2014/53/UE. Il testo completo della dichiarazione di conformità UE è disponibile al seguente indirizzo Internet:

<http://www.lg.com/global/support/cedoc/cedoc#>

LG Electronics European Shared Service Center B.V.

Krijgsman 1

1186 DM Amstelveen

The Netherlands

La banda 5150 - 5350 MHz è limitata esclusivamente all'utilizzo domestico.

Restrizione valida solo per Belgio (BE), Bulgaria (BG), Repubblica Ceca (CZ), Danimarca (DK), Germania (DE), Estonia (EE), Irlanda (IE), Grecia (EL), Spagna (ES), Francia (FR), Croazia (HR), Italia (IT), Cipro (CY), Lettonia (LV), Lituania (LT), Lussemburgo (LU), Ungheria (HU), Malta (MT), Paesi Bassi (NL), Austria (AT), Polonia (PL), Portogallo (PT), Romania (RO), Slovenia (SI), Slovacchia (SK), Finlandia (FI), Svezia (SE), Irlanda del Nord (UK(NI)), Svizzera (CH), Islanda

(IS), Liechtenstein (LI), Norvegia (NO) e Regno Unito (UK). (Per il modello con Wi-Fi/Bluetooth integrato o per il modello con Wi-Fi integrato)

**ESPAÑOL**

[Para equipos bajo la Directiva de equipos de radio]

Por la presente, LG Electronics declara que el tipo de equipo radioeléctrico [Uno: Compartir rápidamente] es conforme con la Directiva 2014/53/UE. El texto completo de la declaración UE de conformidad está disponible en la dirección Internet siguiente:

<http://www.lg.com/global/support/cedoc/cedoc#>

LG Electronics European Shared Service Center B.V.

Krijgsman 1

1186 DM Amstelveen

The Netherlands

El uso de la banda de 5150 - 5350 MHz está restringido únicamente a interiores. Esta restricción existe en los siguientes países: Bélgica (BE), Bulgaria (BG), República Checa (CZ), Dinamarca (DK), Alemania (DE), Estonia (EE), Irlanda (IE), Grecia (EL), España (ES), Francia (FR), Croacia (HR), Italia (IT), Chipre (CY), Letonia

(LV), Lituania (LT), Luxemburgo (LU), Hungría (HU), Malta (MT), Países Bajos (NL), Austria (AT), Polonia (PL), Portugal (PT), Rumania (RO), Eslovenia (SI), Eslovaquia (SK), Finlandia (FI), Suecia (SE), Irlanda del Norte (UK(NI)), Suiza (CH), Islandia (IS), Liechtenstein (LI), Noruega (NO) y Reino Unido (UK). (Para el modelo con Wi-Fi/Bluetooth incorporado o el modelo con Wi-Fi incorporado)

### PORTUGUÊS

[Para equipamento ao abrigo da Diretiva para equipamento rádio]

O(a) abaixo assinado(a) LG

Electronics declara que o presente tipo de equipamento de rádio [One:Quick Share] está em conformidade com a Diretiva 2014/53/UE. O texto integral da declaração de conformidade está disponível no seguinte endereço de Internet:

<http://www.lg.com/global/support/cedoc/cedoc#>

LG Electronics European Shared Service Center B.V.

Krijgsman 1

1186 DM Amstelveen

The Netherlands

A utilização da banda de 5150 -

5350 MHz está restrita à utilização em interiores. Esta restrição existe nos seguintes países: Bélgica (BE), Bulgária (BG), República Checa (CZ), Dinamarca (DK), Alemanha (DE), Estónia (EE), Irlanda (IE), Grécia (EL), Espanha (ES), França (FR), Croácia (HR), Itália (IT), Chipre (CY), Letónia (LV), Lituânia (LT), Luxemburgo (LU), Hungria (HU), Malta (MT), Holanda (NL), Áustria (AT), Polónia (PL), Portugal (PT), Roménia (RO), Eslovénia (SI), Eslováquia (SK), Finlândia (FI), Suécia (SE), Irlanda do Norte (UK(NI)), Suíça (CH), Islândia (IS), Liechtenstein (LI), Noruega (NO) e Reino Unido (UK). (Para modelos com Wi-Fi/Bluetooth incorporados ou modelos com Wi-Fi incorporado)

### NEDERLANDS

[Voor apparatuur onder Richtlijn voor radioapparatuur]

Hierbij verklaar ik, LG Electronics, dat het type radioapparatuur [Een klik: sneldelen] conform is met Richtlijn 2014/53/EU. De volledige tekst van de EU-conformiteitsverklaring kan worden geraadpleegd op het volgende internetadres:

<http://www.lg.com/global/support/cedoc/cedoc#>

LG Electronics European Shared

Service Center B.V.  
Krijgsman 1  
1186 DM Amstelveen  
The Netherlands

De 5150 - 5350 MHz-band kan alleen binnenshuis worden gebruikt. Deze beperking is van kracht in de landen België (BE), Bulgarije (BG), Tsjechische Republiek (CZ), Denemarken (DK), Duitsland (DE), Estland (EE), Ierland (IE), Griekenland (EL), Spanje (ES), Frankrijk (FR), Kroatië (HR), Italië (IT), Cyprus (CY), Letland (LV), Litouwen (LT), Luxemburg (LU), Hongarije (HU), Malta (MT), Nederland (NL), Oostenrijk (AT), Polen (PL), Portugal (PT), Roemenië (RO), Slovenië (SI), Slowakije (SK), Finland (FI), Zweden (SE), Noord-Ierland (UK(NI)), Zwitserland (CH), IJsland (IS), Liechtenstein (LI), Noorwegen (NO) en Verenigd Koninkrijk (UK). (Voor modellen met ingebouwde Wi-Fi/Bluetooth, en modellen met ingebouwde Wi-Fi)

### MAGYAR

[A rádióberendezésekről szóló irányelv alá tartozó berendezésekhez]

LG Electronics igazolja, hogy a [Egy: gyors megosztás] típusú rádióberendezés megfelel a 2014/53/EU irányelvnek. Az EU-megfelelőségi

nyilatkozat teljes szövege elérhető a következő internetes címen:

<http://www.lg.com/global/support/cedoc/cedoc#>

LG Electronics European Shared  
Service Center B.V.  
Krijgsman 1  
1186 DM Amstelveen  
The Netherlands

Az 5150–5350 MHz-es sáv használata csak beltéren megengedett. Ez a korlátozás a következő országokban érvényes: Belgium (BE), Bulgária (BG), Csehország (CZ), Dánia (DK), Németország (DE), Észtország (EE), Írország (IE), Görögország (EL), Spanyolország (ES), Franciaország (FR), Horvátország (HR), Olaszország (IT), Ciprus (CY), Lettország (LV), Litvánia (LT), Luxemburg (LU), Magyarország (HU), Málta (MT), Hollandia (NL), Ausztria (AT), Lengyelország (PL), Portugália (PT), Románia (RO), Szlovénia (SI), Szlovákia (SK), Finnország (FI), Svédország (SE), Észak-Írország (UK(NI)), Svájc (CH), Izland (IS), Liechtenstein (LI), Norvégia (NO) és Egyesült Királyság (UK). (A beépített Wi-Fi/Bluetooth kapcsolattal, vagy a csak Wi-Fi kapcsolattal rendelkező modellekhez)

**POLSKI**

[Dotyczy urządzeń, do których zastosowanie ma dyrektywa w sprawie urządzeń radiowych]

LG Electronics niniejszym oświadcza, że typ urządzenia radiowego [Jeden: Szybkie udostępnianie] jest zgodny z dyrektywą 2014/53/UE. Pełny tekst deklaracji zgodności UE jest dostępny pod następującym adresem internetowym:

<http://www.lg.com/global/support/cedoc/cedoc#>

LG Electronics European Shared Service Center B.V.

Krijgsman 1

1186 DM Amstelveen

The Netherlands

Pasma 5150–5350 MHz można używać wyłącznie w pomieszczeniach.

Ograniczenie obowiązuje w krajach:

Belgia (BE), Bułgaria (BG), Czechy (CZ), Dania (DK), Niemcy (DE), Estonia (EE), Irlandia (IE), Grecja (EL), Hiszpania (ES), Francja (FR), Chorwacja (HR), Włochy (IT), Cypr (CY), Łotwa (LV), Litwa (LT), Luksemburg (LU), Węgry (HU), Malta (MT), Holandia (NL), Austria (AT), Polska (PL), Portugalia (PT), Rumunia (RO), Słowenia (SI), Słowacja (SK), Finlandia (FI), Szwecja (SE), Irlandia

Północna (UK(NI)), Szwajcaria (CH), Islandia (IS), Liechtenstein (LI), Norwegia (NO) oraz Wielka Brytania (UK). (Modele z wbudowanym modulem sieci Wi-Fi/Bluetooth lub modele z wbudowanym modulem sieci Wi-Fi)

**ČESKY**

[Pro zařízení podléhající směrnici pro rádiová zařízení]

Tímto LG Electronics prohlašuje, že typ rádiového zařízení [Jedno kliknutí: Rychlé sdílení] je v souladu se směrnici 2014/53/EU. Úplné znění EU prohlášení o shodě je k dispozici na této internetové adrese:

<http://www.lg.com/global/support/cedoc/cedoc#>

LG Electronics European Shared Service Center B.V.

Krijgsman 1

1186 DM Amstelveen

The Netherlands

Použití pásma 5 150–5 350 MHz je omezeno pouze na interiér. Toto omezení existuje v následujících zemích: Belgie (BE), Bulharsko (BG), Česká republika (CZ), Dánsko (DK), Německo (DE), Estonsko (EE), Irsko (IE), Řecko (EL), Španělsko (ES),

Francie (FR), Chorvatsko (HR), Itálie (IT), Kypr (CY), Lotyšsko (LV), Litva (LT), Lucembursko (LU), Maďarsko (HU), Malta (MT), Nizozemsko (NL), Rakousko (AT), Polsko (PL), Portugalsko (PT), Rumunsko (RO), Slovinsko (SI), Slovensko (SK), Fínsko (FI), Švédsko (SE), Severní Írsko (UK(NI)), Švýcarsko (CH), Island (IS), Lichtenštejnsko (LI), Norsko (NO) a Spojené království (UK). (Pro model s integrovaným rozhraním Wi-Fi/Bluetooth nebo pro model s integrovaným rozhraním Wi-Fi)

### SLOVENČINA

[Pre zariadenia podliehajúce smernici o rádiových zariadeniach]

LG Electronics týmto vyhlasuje, že rádiové zariadenie typu [Jeden: Rýchle zdieľanie] je v súlade so smernicou 2014/53/EÚ. Úplné EÚ vyhlásenie o zhode je k dispozícii na tejto internetovej adrese:

<http://www.lg.com/global/support/cedoc/cedoc#>

LG Electronics European Shared Service Center B.V.  
Krijgsman 1  
1186 DM Amstelveen  
The Netherlands

Pásmo 5 150 – 5 350 MHz je povolené používať iba v interiéri. Toto obmedzenie platí pre krajiny: Belgicko (BE), Bulharsko (BG), Česká republika (CZ), Dánsko (DK), Nemecko (DE), Estónsko (EE), Írsko (IE), Grécko (EL), Španielsko (ES), Francúzsko (FR), Chorvátsko (HR), Taliansko (IT), Cyprus (CY), Lotyšsko (LV), Litva (LT), Luxembursko (LU), Maďarsko (HU), Malta (MT), Holandsko (NL), Rakúsko (AT), Poľsko (PL), Portugalsko (PT), Rumunsko (RO), Slovinsko (SI), Slovensko (SK), Fínsko (FI), Švédsko (SE), Severné Írsko (UK(NI)), Švajčiarsko (CH), Island (IS), Lichtenštajnsko (LI), Nórsko (NO) a Spojené kráľovstvo (UK). (Pre model so zabudovaným rozhraním Wi-Fi/Bluetooth alebo model so zabudovaným rozhraním Wi-Fi)

### ROMÂNĂ

[Pentru echipamentul aflat sub incidența Directivei referitoare la echipamentele radio]  
Prin prezenta, LG Electronics declară că tipul de echipamente radio [Un clic: Partajare rapidă] este în conformitate cu Directiva 2014/53/UE. Textul integral al declarației UE de conformitate este disponibil la următoarea adresă internet:

<http://www.lg.com/global/support/>

*cedoc/cedoc#*

LG Electronics European Shared  
Service Center B.V.

Krijgsman 1  
1186 DM Amstelveen  
The Netherlands

Utilizarea benzii de 5150 - 5350 MHz este restricționată doar la interior. Această restricție există în țările Belgia (BE), Bulgaria (BG), Republica Cehă (CZ), Danemarca (DK), Germania (DE), Estonia (EE), Irlanda (IE), Grecia (EL), Spania (ES), Franța (FR), Croația (HR), Italia (IT), Cipru (CY), Letonia (LV), Lituania (LT), Luxemburg (LU), Ungaria (HU), Malta (MT), Olanda (NL), Austria (AT), Polonia (PL), Portugalia (PT), România (RO), Slovenia (SI), Slovacia (SK), Finlanda (FI), Suedia (SE), Irlanda de nord (UK(NI)), Elveția (CH), Islanda (IS), Liechtenstein (LI), Norvegia (NO) și Regatul Unit (UK). (Pentru modelul integrat Wi-Fi/Bluetooth sau modelul integrat Wi-Fi)

### SVENSKA

[För utrustning som omfattas av direktivet om radioutrustning]

Härmed försäkrar LG Electronics att denna typ av radioutrustning [Ett klick: Snabbdela] överensstämmer med direktiv 2014/53/EU. Den

fullständiga texten till EU-försäkran om överensstämmelse finns på följande webbadress:

<http://www.lg.com/global/support/cedoc/cedoc#>

LG Electronics European Shared  
Service Center B.V.

Krijgsman 1  
1186 DM Amstelveen  
The Netherlands

5 150–5 350 MHz-bandet får bara användas inomhus. Denna begränsning finns i länderna Belgien (BE), Bulgarien (BG), Tjeckien (CZ), Danmark (DK), Tyskland (DE), Estland (EE), Irland (IE), Grekland (EL), Spanien (ES), Frankrike (FR), Kroatien (HR), Italien (IT), Cypern (CY), Lettland (LV), Litauen (LT), Luxemburg (LU), Ungern (HU), Malta (MT), Nederländerna (NL), Österrike (AT), Polen (PL), Portugal (PT), Rumänien (RO), Slovenien (SI), Slovakien (SK), Finland (FI), Sverige (SE), Nordirland(UK(NI)), Schweiz (CH), Island (IS), Liechtenstein (LI), Norge(NO) och Storbritannien (UK). (För modeller med inbyggd Wi-Fi/Bluetooth eller endast Wi-Fi)

### NORSK



[For utstyr under direktivet for radioutstyr]

LG Electronics erklærer herved at radioutstyret av typen [Ett klikk: Hurtigdeling] er i samsvar med direktiv 2014/53/EU. Du finner hele EU-samsvarserklæringen på nettet her:

<http://www.lg.com/global/support/cedoc/cedoc#>

LG Electronics European Shared Service Center B.V.

Krijgsman 1  
1186 DM Amstelveen  
The Netherlands

Båndet på 5150–5350 MHz kan bare brukes innendørs. Denne begrensningen finnes i følgende land: Belgia (BE), Bulgaria (BG), Tsjekkia (CZ), Danmark (DK), Tyskland (DE), Estland (EE), Irland (IE), Hellas (EL), Spania (ES), Frankrike (FR), Kroatia (HR), Italia (IT), Kypros (CY), Latvia (LV), Litauen (LT), Luxembourg (LU), Ungarn (HU), Malta (MT), Nederland (NL), Østerrike (AT), Polen (PL), Portugal (PT), Romania (RO), Slovenia (SI), Slovakia (SK), Finland (FI), Sverige (SE), Nord-Irland (UK (NI)), Sveits (CH), Island (IS), Liechtenstein (LI), Norge (NO) og Storbritannia (UK). (For modell med innebygd Wi-Fi/Bluetooth eller Wi-Fi)

## DANSK

[For utstyr i radioudstyrsdirektivet] Hermed erklærer LG Electronics, at radioudstyrstypen [Et: Hurtig deling] er i overensstemmelse med direktiv 2014/53/EU. EU-overensstemmelseserklæringens fulde tekst kan findes på følgende internetadresse:

<http://www.lg.com/global/support/cedoc/cedoc#>

LG Electronics European Shared Service Center B.V.

Krijgsman 1  
1186 DM Amstelveen  
The Netherlands

Brugen af 5150-5350 MHz-båndet er kun forbeholdt indendørs brug. Dette forbehold er gældende i Belgien (BE), Bulgarien (BG), Tjekkiet (CZ), Danmark (DK), Tyskland (DE), Estland (EE), Irland (IE), Grækenland (EL), Spanien (ES), Frankrig (FR), Kroatien (HR), Italien (IT), Cypern (CY), Letland (LV), Litauen (LT), Luxembourg (LU), Ungarn (HU), Malta (MT), Holland (NL), Østrig (AT), Polen (PL), Portugal (PT), Rumænien (RO), Slovenien (SI), Slovakiet (SK), Finland (FI), Sverige (SE), Nordirland (UK(NI)), Schweiz (CH), Island (IS), Liechtenstein (LI), Norge (NO) og Storbritannien (UK). (Ti

inbygget Wi-Fi/Bluetooth-model eller inbygget Wi-Fi-model)

### SUOMI

[radiolaitteita koskevan direktiivin mukaiseen laitteeseen]

LG Electronics vakuuttaa, että radiolaitetyyppi [Pikajako yhdellä klikkauksella] on direktiivin 2014/53/EU mukainen. EU-vaatimustenmukaisuusvakuutuksen täysimittainen teksti on saatavilla seuraavassa internetosoitteessa:

<http://www.lg.com/global/support/cedoc/cedoc#>

LG Electronics European Shared Service Center B.V.

Krijgsman 1

1186 DM Amstelveen

The Netherlands

Taajuusalueen 5150 – 5350 MHz käyttö on sallittua vain sisätiloissa. Rajoitus koskee seuraavia maita: Belgia (BE), Bulgaria (BG), Tšekin tasavalta (CZ), Tanska (DK), Saksa (DE), Viro (EE), Irlanti (IE), Kreikka (EL), Espanja (ES), Ranska (FR), Kroatia (HR), Italia (IT), Kypros (CY), Latvia (LV), Liettua (LT), Luxemburg (LU), Unkari (HU), Malta (MT), Alankomaat (NL), Itävalta (AT), Puola

(PL), Portugali (PT), Romania (RO), Slovenia (SI), Slovakia (SK), Suomi (FI), Ruotsi (SE), Pohjois-Irlanti (UK(NI)), Sveitsi (CH), Islanti (IS), Liechtenstein (LI), Norja (NO) ja Iso-Britannia (UK). (Malleille, joissa on sisäinen Wi-Fi/Bluetooth tai sisäinen Wi-Fi)

### EESTI

[Raadioseadmete direktiivis käsitletud seadmete puhul]

Käesolevaga deklareerib LG Electronics, et käesolev raadioseadme tüüp [Ühe klõpsuga kiirjagamine] vastab direktiivi 2014/53/EL nõuetele. ELi vastavusdeklaratsiooni täielik tekst on kättesaadav järgmisel internetiaadressil:

<http://www.lg.com/global/support/cedoc/cedoc#>

LG Electronics European Shared Service Center B.V.

Krijgsman 1

1186 DM Amstelveen

The Netherlands

5150–5350 MHz sagedusriba on ette nähtud ainult siseruumides kasutamiseks. See piirang kehtib järgmistes riikides: Belgia (BE), Bulgaaria (BG), Tšehhi (CZ), Taani

(DK), Saksamaa (DE), Eesti (EE), Iirimaa (IE), Kreeka (EL), Hispaania (ES), Prantsusmaa (FR), Horvaatia (HR), Itaalia (IT), Küpros (CY), Läti (LV), Leedu (LT), Luksemburg (LU), Ungari (HU), Malta (MT), Holland (NL), Austria (AT), Poola (PL), Portugal (PT), Rumeenia (RO), Sloveenia (SI), Slovakkia (SK), Soome (FI), Rootsi (SE), Põhja-Iirimaa (UK(NI)), Šveits (CH), Island (IS), Liechtenstein (LI), Norra (NO) ja Ühendkuningriik (UK). (Sisseehitatud Wi-Fi/Bluetoothiga mudelil või sisseehitatud Wi-Fi-ga mudelil)

#### LIETUVIŲ K.

[Skirta įrangai, remiantis Direktyva dėl radijo ryšio įrenginių]  
Aš, LG Electronics, patvirtinu, kad radijo įrenginių tipas [Vienas:spartusis dalinimasis] atitinka Direktyvą 2014/53/ES. Visas ES atitikties deklaracijos tekstas prieinamas šiuo interneto adresu:

<http://www.lg.com/global/support/cedoc/cedoc#>

LG Electronics European Shared  
Service Center B.V.  
Krijgsman 1  
1186 DM Amstelveen  
The Netherlands

5150–5350 MHz ryšys turi būti naudojamas tik patalpose. Šis ribojimas taikomas Belgijoje (BE), Bulgarijoje (BG), Čekijos Respublikoje (CZ), Danijoje (DK), Vokietijoje (DE), Estijoje (EE), Airijoje (IE), Graikijoje (EL), Ispanijoje (ES), Prancūzijoje (FR), Kroatijoje (HR), Italijoje (IT), Kipre (CY), Latvijoje (LV), Lietuvoje (LT), Liuksemburge (LU), Vengrijoje (HU), Maltoje (MT), Nyderlanduose (NL), Austrijoje (AT), Lenkijoje (PL), Portugalijoje (PT), Rumunijoje (RO), Slovėnijoje (SI), Slovakijoje (SK), Suomijoje (FI), Švedijoje (SE), Šiaurės airijoje (UK(NI)), Šveicarijoje (CH), Islandijoje (IS), Lichtenšteine (LI), Norvegijoje (NO) ir Jungtinėje Karalystėje (UK). (Skirta modeliui su integruotu „Wi-Fi“ / „Bluetooth“ arba „Wi-Fi“)

**LATVIEŠU**

[Iekārtām atbilstoši Radioiekārtu direktīvai]

Ar šo LG Electronics deklarē, ka radioiekārta [Viens: ātrā kopīgošana] atbilst Direktīvai 2014/53/ES. Pilns ES atbilstības deklarācijas teksts ir pieejams šādā interneta vietnē:

<http://www.lg.com/global/support/cedoc/cedoc#>

LG Electronics European Shared Service Center B.V.

Krijgsman 1

1186 DM Amstelveen

The Netherlands

5150 – 5350 MHz josla ir paredzēta tikai lietošanai iekštelpās. Šis ierobežojums pastāv šādās valstīs: Beļģija (BE), Bulgārija (BG), Čehija (CZ), Dānija (DK), Vācija (DE), Igaunija (EE), Īrija (IE), Grieķija (EL), Spānija (ES), Francija (FR), Horvātija (HR), Itālija (IT), Kipra (CY), Latvija (LV), Lietuva (LT), Luksemburga (LU), Ungārija (HU), Malta (MT), Nīderlande (NL), Austrija (AT), Polija (PL), Portugāle (PT), Rumānija (RO), Slovēnija (SI), Slovākija (SK), Somija (FI), Zviedrija (SE), Ziemeļīrija (UK(NI)), Šveice (CH), Islande (IS), Lichtenšteina (LI), Norvēģija (NO) un Apvienotā Karaliste (UK). (Modelim ar

iebūvētu Wi-Fi/Bluetooth vai iebūvētu Wi-Fi)

**SLOVENŠČINA**

[Za opremo, za katero velja direktiva za radijsko opremo]

LG Electronics potrjuje, da je tip radijske opreme [En klik: Hitro dajanje v skupno rabo] skladen z Direktivo 2014/53/EU. Celotno besedilo izjave EU o skladnosti je na voljo na naslednjem spletnem naslovu:

<http://www.lg.com/global/support/cedoc/cedoc#>

LG Electronics European Shared Service Center B.V.

Krijgsman 1

1186 DM Amstelveen

The Netherlands

5150–5350 MHz pas je omejen na uporabo v zaprtih prostorih. Ta omejitev velja v naslednjih državah: Belgija (BE), Bolgarija (BG), Češka (CZ), Danska (DK), Nemčija (DE), Estonija (EE), Irska (IE), Grčija (EL), Španija (ES), Francija (FR), Hrvaška (HR), Italija (IT), Ciper (CY), Latvija (LV), Litva (LT), Luksemburg (LU), Madžarska (HU), Malta (MT), Nizozemska (NL), Avstrija (AT), Poljska (PL), Portugalska (PT), Romunija

(RO), Slovenija (SI), Slovaška (SK), Finska (FI), Švedska (SE), Severna Irska (UK(NI)), Švicarska (CH), Islandija (IS), Lihtenštajn (LI), Norveška (NO) in Združeno kraljevstvo (UK). (Za modele z vgrajenima vmesnikoma za Wi-Fi in Bluetooth ter modele z vgrajenim vmesnikom za Wi-Fi)

### SRPSKI

[Za opremu na koju se odnosi Direktiva o opremi koja proizvodi radio talase] Kompanija LG Electronics ovim izjavljuje da je oprema koja proizvodi radio talase tipa [Jedan: brzo dijeljenje] usaglašena sa Direktivom 2014/53/EU. Celokupan tekst Izjave o usaglašenosti za EU dostupan je na sledećoj internet adresi:

<http://www.lg.com/global/support/cedoc/cedoc#>

LG Electronics European Shared Service Center B.V.  
Krijgsman 1  
1186 DM Amstelveen  
The Netherlands

Opseg frekvencije 5150–5350 MHz predviđen je samo za upotrebu u zatvorenim prostorima. Ovo ograničenje postoji u sledećim zemljama: Belgija (BE), Bugarska

(BG), Češka Republika (CZ), Danska (DK), Nemačka (DE), Estonija (EE), Irska (IE), Grčka (EL), Španija (ES), Francuska (FR), Hrvatska (HR), Italija (IT), Kipar (CY), Letonija (LV), Litvanija (LT), Luksemburg (LU), Mađarska (HU), Malta (MT), Holandija (NL), Austrija (AT), Poljska (PL), Portugal (PT), Rumunija (RO), Slovenija (SI), Slovačka (SK), Finska (FI), Švedska (SE), Severna Irska (UK(NI)), Švajcarska (CH), Island (IS), Lihtenštajn (LI), Norveška (NO) i Ujedinjeno Kraljevstvo (UK). (Za modele koji imaju ugrađen Wi-Fi/Bluetooth ili modele koji imaju ugrađen Wi-Fi)

### HRVATSKI

[Za opremu na koju se odnosi Direktiva o radijskoj opremi]

LG Electronics ovime izjavljuje da je radijska oprema tipa [Klik:Brzo dijeljenje] u skladu s Direktivom 2014/53/EU. Cjeloviti tekst EU izjave o sukladnosti dostupan je na sledećoj internetskoj adresi:

<http://www.lg.com/global/support/cedoc/cedoc#>

LG Electronics European Shared Service Center B.V.  
Krijgsman 1  
1186 DM Amstelveen

## The Netherlands

Korištenje frekvencije 5150 – 5350 MHz ograničeno je isključivo na zatvoreni prostor. Ovo ograničenje postoji u sljedećim zemljama: Belgija (BE), Bugarska (BG), Češka (CZ), Danska (DK), Njemačka (DE), Estonija (EE), Irska (IE), Grčka (EL), Španjolska (ES), Francuska (FR), Hrvatska (HR), Italija (IT), Cipar (CY), Latvija (LV), Litva (LT), Luksemburg (LU), Mađarska (HU), Malta (MT), Nizozemska (NL), Austrija (AT), Poljska (PL), Portugal (PT), Rumunjska (RO), Slovenija (SI), Slovačka (SK), Finska (FI), Švedska (SE), Sjeverna Irska (UK(NI)), Švicarska (CH), Island (IS), Lihtenštajn (LI), Norveška (NO) i Ujedinjeno Kraljevstvo (UK). (Za modele s ugrađenom Wi-Fi/Bluetooth funkcijom ili za modele s ugrađenom Wi-Fi funkcijom)

### SHQIP

[Për pajisjet në pajtueshmëri me Direktivën për radiopajisjet]  
Me anë të këtij dokumenti, LG Electronics deklaron se radiopajisja e tipit [Një: Ndarje e shpejtë] është në pajtim me direktivën 2014/53/BE. Teksti i plotë i deklaratosë së pajtueshmërisë së BE-së jepet në adresën e mëposhtme të internetit:

<http://www.lg.com/global/support/cedoc/cedoc#>

LG Electronics European Shared Service Center B.V.

Krijgsman 1

1186 DM Amstelveen

The Netherlands

Përdorimi i brezit 5150–5350 MHz lejohet vetëm në ambiente të mbyllura. Ky kufizim vepron në shtetet: Belgjikë (BE), Bullgari (BG), Çeki (CZ), Danimarkë (DK), Gjermani (DE), Estoni (EE), Irlandë (IE), Greqi (EL), Spanjë (ES), Francë (FR), Kroaci (HR), Itali (IT), Qipro (CY), Letoni (LV), Lituani (LT), Luksemburg (LU), Hungari (HU), Maltë (MT), Holandë (NL), Austri (AT), Poloni (PL), Portugali (PT), Rumani (RO), Slloveni (SI), Sllovaki (SK), Finlandë (FI), Suedi (SE), Irlandë e Veriut (UK(NI)), Zvicër (CH), Islandë (IS), Lihtenshtajn (LI), Norvegji (NO) dhe Mbretëri e Bashkuar (UK). (Për modelet me Wi-Fi/Bluetooth ose Wi-Fi të integruar)

## МАКЕДОНСКИ

[За опрема која спаѓа под Директивата за радио опрема]  
 Со ова, LG Electronics изјавува дека типот на радио опрема [Еден клик: брзо споделување] е во согласност со Директивата 2014/53/EU.  
 Целосниот текст на Декларацијата за усогласеност на ЕУ можете да ја најдете на следната интернет адреса:

<http://www.lg.com/global/support/cedoc/cedoc#>

LG Electronics European Shared Service Center B.V.  
 Krijgsman 1  
 1186 DM Amstelveen  
 The Netherlands

Користењето на појасот 5150 – 5350 MHz е ограничено само за во затворени простории. Ова ограничување постои во земјите Белгија (BE), Бугарија (BG), Република Чешка (CZ), Данска (DK), Германија (DE), Естонија (EE), Ирска (IE), Грција (EL), Шпанија (ES), Франција (FR), Хрватска (HR), Италија (IT), Кипар (CY), Латвија (LV), Литванија (LT), Луксембург (LU), Унгарија (HU), Малта (MT), Холандија (NL), Австрија (AT), Полска (PL), Португалија (PT),

Романија (RO), Словенија (SI), Словачка (SK), Финска (FI), Шведска (SE), Северна Ирска (UK(NI)), Швајцарија (CH), Исланд (IS), Лихтенштајн (LI), Норвешка (NO) и Обединетото Кралство (UK). (За моделот со вграден Wi-Fi/Bluetooth или моделот со вграден Wi-Fi)

## ΕΛΛΗΝΙΚΑ

[Για τον εξοπλισμό που περιγράφεται στην Οδηγία περί Ραδιοεξοπλισμού]  
 Με την παρούσα ο/η LG Electronics, δηλώνει ότι ο ραδιοεξοπλισμός [Γρήγορη κοινοποίηση με ένα κλικ] πληροί την οδηγία 2014/53/EE.  
 Το πλήρες κείμενο της δήλωσης συμμόρφωσης ΕΕ διατίθεται στην ακόλουθη ιστοσελίδα στο διαδίκτυο:

<http://www.lg.com/global/support/cedoc/cedoc#>

LG Electronics European Shared Service Center B.V.  
 Krijgsman 1  
 1186 DM Amstelveen  
 The Netherlands

Η χρήση της ζώνης 5150 – 5350 MHz επιτρέπεται μόνο σε εσωτερικούς χώρους. Αυτός ο περιορισμός ισχύει για τις παρακάτω χώρες: Βέλγιο (BE), Βουλγαρία (BG),

Δημοκρατία της Τσεχίας (CZ), Δανία (DK), Γερμανία (DE), Εσθονία (EE), Ιρλανδία (IE), Ελλάδα (EL), Ισπανία (ES), Γαλλία (FR), Κροατία (HR), Ιταλία (IT), Κύπρος (CY), Λετονία (LV), Λιθουανία (LT), Λουξεμβούργο (LU), Ουγγαρία (HU), Μάλτα (MT), Ολλανδία (NL), Αυστρία (AT), Πολωνία (PL), Πορτογαλία (PT), Ρουμανία (RO), Σλοβενία (SI), Σλοβακία (SK), Φινλανδία (FI), Σουηδία (SE), Βόρεια Ιρλανδία (UK(NI)), Ελβετία (CH), Ισλανδία (IS), Λιχτενστάιν (LI), Νορβηγία (NO) και Ηνωμένο Βασίλειο (UK). (Για το μοντέλο με ενσωματωμένο Wi-Fi/Bluetooth ή για το μοντέλο με ενσωματωμένο Wi-Fi)

### **БЪЛГАРСКИ**

[за оборудване, обхванато от Директивата за радиооборудване]  
С настоящото LG Electronics декларира, че този тип радиосъоръжение [Един клик: Бързо споделяне] е в съответствие с Директива 2014/53/ЕС. Цялостният текст на ЕС декларацията за съответствие може да се намери на следния интернет адрес:

<http://www.lg.com/global/support/cedoc/cedoc#>

LG Electronics European Shared

Service Center B.V.  
Krijgsman 1  
1186 DM Amstelveen  
The Netherlands

Честотната лента от 5150 – 5350 MHz е ограничена за използване само на закрито. Това ограничение съществува в следните страни: Белгия (BE), България (BG), Чешка република (CZ), Дания (DK), Германия (DE), Естония (EE), Ирландия (IE), Гърция (EL), Испания (ES), Франция (FR), Хърватия (HR), Италия (IT), Кипър (CY), Латвия (LV), Литва (LT), Люксембург (LU), Унгария (HU), Малта (MT), Нидерландия (NL), Австрия (AT), Полша (PL), Португалия (PT), Румъния (RO), Словения (SI), Словакия (SK), Финландия (FI), Швеция (SE), Северна Ирландия (UK(NI)), Швейцария (CH), Исландия (IS), Лихтенщайн (LI), Норвегия (NO) и Обединеното кралство (UK). (За модел с вграден Wi-Fi/Bluetooth или модел с вграден Wi-Fi)

### **ҚАЗАҚША**

[Радиобайлансы құрылғыларына қатысты директива талаптарына жүгінетін жабдық үшін]  
Осымен LG Electronics компаниясы [Бір: Жылдам бөлісу] атты радио



жабдық түрінің 2014/53/EU директивасына сәйкес келетіндігін жариялайды. ЕО сәйкестілік декларациясының толық мәтіні келесі веб-мекенжай бойынша қолжетімді:

<http://www.lg.com/global/support/cedoc/cedoc#>

LG Electronics European Shared Service Center B.V.  
Krijgsman 1  
1186 DM Amstelveen  
The Netherlands

5150 – 5350 МГц жиілігін тек бөлме ішінде пайдалануға рұқсат етіледі. Бұл шектеу мына елдерде қолданылады: Бельгия (BE), Болгария (BG), Чех Республикасы (CZ), Дания (DK), Германия (DE), Эстония (EE), Ирландия (IE), Грекия (EL), Испания (ES), Франция (FR), Хорватия (HR), Италия (IT), Кипр (CY), Латвия (LV), Литва (LT), Люксембург (LU), Венгрия (HU), Мальта (MT), Нидерланд (NL), Австрия (AT), Польша (PL), Португалия (PT), Румыния (RO), Словения (SI), Словакия (SK), Финляндия (FI), Швеция (SE), Солтүстік Ирландия (UK(NI)), Швейцария (CH), Исландия (IS), Лихтенштейн (LI), Норвегия (NO) және Біріккен Корольдігі (UK). (Wi-Fi/

Bluetooth кірістірілген үлгісі немесе Wi-Fi кірістірілген режимі үшін)

### РУССКИЙ

[Для оборудования, на которое распространяется действие Директивы о радиоборудовании.] Настоящим компания LG Electronics заявляет, что тип радиоборудования [Вывод экранов одним щелчком] соответствует Директиве 2014/53/ЕС. Полный текст декларации ЕС о соответствии доступен по следующему адресу в сети Интернет:

<http://www.lg.com/global/support/cedoc/cedoc#>

LG Electronics European Shared Service Center B.V.  
Krijgsman 1  
1186 DM Amstelveen  
The Netherlands

Полоса частот 5150–5350 МГц предназначена для использования только в помещениях. Это ограничение действует в следующих странах: Бельгия (BE), Болгария (BG), Чешская Республика (CZ), Дания (DK), Германия (DE), Эстония (EE), Ирландия (IE), Греция (EL), Испания (ES), Франция

(FR), Хорватия (HR), Италия (IT), Кипр (CY), Латвия (LV), Литва (LT), Люксембург (LU), Венгрия (HU), Мальта (MT), Нидерланды (NL), Австрия (AT), Польша (PL), Португалия (PT), Румыния (RO), Словения (SI), Словакия (SK), Финляндия (FI), Швеция (SE), Северная Ирландия (UK(NI)), Швейцария (CH), Исландия (IS), Лихтенштейн (LI), Норвегия (NO) и Великобритания (UK). (Для моделей со встроенным Wi-Fi/Bluetooth или со встроенным Wi-Fi).

#### УКРАЇНСЬКА

[Для обладнання, яке відповідає Директиві щодо радіобладнання] справжнім LG Electronics заявляє, що тип радіобладнання [Один:швидка демонстрація] відповідає Технічному регламенту радіобладнання; повний текст декларації про відповідність доступний на веб-сайті за такою адресою:

<http://www.lg.com/global/support/cedoc/cedoc#>

Діапазон частот 5150 – 5350 МГц призначений тільки для використання у приміщенні. (Для моделей із вбудованою функцією Wi-Fi/Bluetooth або Wi-Fi)

## TÜRKÇE

[Radyo Ekipmanı Direktifi Kapsamındaki Ekipmanlar İçin] İşbu belgeyle LG Electronics, radyo ekipmanı tipi [Bir: Quick Share] 2014/53/ EU Direktifi ile uyumlu olduğunu beyan eder. AB uygunluk beyanının tam metnine şu internet adresinden ulaşabilirsiniz:

<http://www.lg.com/global/support/cedoc/cedoc#>

LG Electronics  
European Shared  
Service Center B.V.  
Krijgsman 1  
1186 DM Amstelveen  
The Netherlands

5150 – 5350 MHz  
bant yalnızca kapalı  
alanda kullanılabilir. Bu  
kısıtlama şu ülkelerde  
mevcuttur: Belçika  
(BE), Bulgaristan  
(BG), Çek Cumhuriyeti  
(CZ), Danimarka  
(DK), Almanya (DE),  
Estonya (EE), İrlanda  
(IE), Yunanistan (EL),  
İspanya (ES), Fransa  
(FR), Hırvatistan (HR),  
İtalya (IT), Kıbrıs (CY),  
Letonya (LV), Litvanya  
(LT), Lüksemburg  
(LU), Macaristan (HU),  
Malta (MT), Hollanda  
(NL), Avusturya (AT),  
Polonya (PL), Portekiz  
(PT), Romanya (RO),  
Slovenya (SI), Slovakya  
(SK), Finlandiya (FI),  
İsveç (SE), Kuzey  
İrlanda (UK(NI)), İsviçre  
(CH), İzlanda (IS),  
Lihtenştayn (LI), Norveç  
(NO) ve Birleşik Krallık  
(UK). (Wi-Fi veya Wi-

Fi/Bluetooth dahili  
modeller için)

## WEEE



### ENGLISH

#### Disposal of your old appliance

- 1 This crossed-out wheeled bin symbol indicates that waste electrical and electronic products (WEEE) should be disposed of separately from the municipal waste stream.
- 2 Old electrical products can contain hazardous substances so correct disposal of your old appliance will help prevent potential negative consequences for the environment and human health. Your old appliance may contain reusable parts that could be used to repair other products, and other valuable materials that can be recycled to conserve limited resources.
- 3 You can take your appliance either to the shop where you purchased the product, or contact your local government waste office for details of your nearest authorised WEEE collection point. For the most up to date information for your country please see [www.lg.com/global/recycling](http://www.lg.com/global/recycling)

### БЪЛГАРСКИ

#### Изхвърляне на стария уред

- 1 Символът със зачертаня контейнер показва, че отпадъците от електрическите и електронните продукти (WEEE) трябва да се изхвърлят отделно от битовите отпадъци.
- 2 Старите електрически продукти могат да съдържат опасни вещества и правилното изхвърляне на Вашия уред ще помогне за предотвратяване на негативните последствия за околната среда и човешкото здраве. Вашият стар уред може да съдържа части за многократна употреба, които биха могли да бъдат използвани за ремонт на други продукти, както и други ценни материали, които могат да бъдат рециклирани с цел запазване на ограничените ресурси.
- 3 Можете да занесете Вашия уред или в магазина, от който сте го закупили или можете да се свържете с местния държавен офис за отпадъците, за да получите информация за най-близкия РАЗРЕШЕН WEEE пункт за събиране на отпадъци. За най-актуална информация от Вашата държава, моля, погледнете тук: [www.lg.com/global/recycling](http://www.lg.com/global/recycling)

**HRVATSKI****Zbrinjavanje starog uređaja**

- 1 Ovaj simbol prekrížene kante za smeće na kotačićima označava kako se otpadni električni i električni proizvodi (WEEE) moraju zbrinjavati odvojeno od komunalnog otpada.
- 2 Dotrajali električni proizvodi mogu sadržavati opasne tvari stoga će ispravno zbirnjavanje vaših dotrajalih uređaja pomoći u sprječavanju potencijalnih negativnih posljedica na okoliš i ljudsko zdravlje. Vaš dotrajao uređaj može sadržavati dijelove koji se mogu ponovo iskoristiti za popravak drugih proizvoda te druge vrijedne materijale koji se mogu reciklirati i tako sačuvati ograničene resurse.
- 3 Ovisno o razini smetnje / štete i dobi stavke, stari proizvodi mogu se popraviti za više radnog života koji će spriječiti izbjegli otpada. Proizvodi koji nisu prikladni za ponovnu uporabu može se reciklirati da se oporavim vrijedne resurse i pomoći da se smanji globalno potrošnju novih sirovina.
- 4 Uređaj možete odnijeti u trgovinu u kojoj ste kupili proizvod ili možete kontaktirati ured za zbrinjavanje otpada kod vaših mjesnih nadležnih tijela te od njih saznati više informacija o najbližem ovlaštenom WEEE sabirnom centru. Za najnovije informacije iz vaše države molimo

pogledajte internetske stranice [www.lg.com/global/recycling](http://www.lg.com/global/recycling)

**ČESKY****Likvidace starého přístroje**

- 1 Tento symbol přeškrtnutého koše značí, že odpad z elektrických a elektronických výrobků (WEEE) je nutné likvidovat odděleně od linky komunálního odpadu.
- 2 Staré elektrické výrobky mohou obsahovat nebezpečné látky, takže správná likvidace starých přístrojů pomůže zabránit potenciálním negativním důsledkům pro životní prostředí a lidské zdraví. Staré přístroje mohou obsahovat znovu použitelné díly, které lze použít k opravě dalších výrobků a další cenné materiály, které lze recyklovat a šetřit tak omezené zdroje.
- 3 Přístroj můžete zanešt buď do obchodu, kde jste ho zakoupili nebo se obrátit na místní správu komunálních odpadů, kde získáte podrobné informace o autorizovaném sběrném místě WEEE. Pro poslední aktuální informace z vaší země si prosím prostudujte web [www.lg.com/global/recycling](http://www.lg.com/global/recycling)

**DANSK****Bortskaffelse af dit gamle apparat**

- 1 Dette symbol med en affaldsspand med kryds over angiver at elektrisk og elektronisk affald (WEEE) skal bortskaffes og genbruges korrekt, adskilt fra kommunens husholdningsaffald.
- 2 Gamle elektriske produkter kan indeholde farlige stoffer, så når du bortskaffer dit gamle apparat på korrekt vis, hjælper du med at forhindre mulige negative konsekvenser for miljø og mennesker. Dit gamle apparat kan indeholde dele som kan genbruges, fx til at reparere andre produkter, eller værdifulde materialer som kan genbruges og derved begrænse spild af værdifulde ressourcer.
- 3 Du kan enten tage apparatet til den butik hvor du købte det, eller kontakte dit lokale affaldskontor angående oplysninger om det nærmeste, autoriserede WEEE-samlingspunkt. Find de sidste nye oplysninger for dit land på [www.lg.com/global/recycling](http://www.lg.com/global/recycling)

**EESTI****Teie vana seadme hävitamine**

- 1 Läbitõmmatud ristiga prügikasti sümbol tähendab, et elektriliste ja elektrooniliste toodete (WEEE) jäätmeid tuleb olmeprügistik eraldi

hävitada.

- 2 Vanad elektriseadmed võivad sisaldada ohtlikke koostisosi, seega aitab prügi nõuetekohane hävitamine vältida võimalikku negatiivset mõju loodusele ja inimeste tervisele. Teie kasutatud seade võib sisaldada taaskasutatavaid osi, millega saab parandada teisi seadmeid ning muid väärtuslikke materjale, mida saab taaskasutada, et säilitada piiratud ressursse.
- 3 Saate viia oma seadme kas kauplusse, kust see on ostetud või võtta ühendust kohaliku prügiveo ettevõttega, et saada lisainfot oma lähima WEEE jäätmete kogumiskoha kohta. Kõige ajakohasemat infot oma riigi kohta vaadake [www.lg.com/global/recycling](http://www.lg.com/global/recycling)

**SUOMI****Vanhan laitteesi hävittäminen**

- 1 Tämä ylläritetty jätteenä merkki ilmaisee, että sähkö- ja elektroniikkalaitteiden jätteet (WEEE) tulee pitää erillään kotitalousjätteistä ja viedä kunnalliseen kierrätyskeskukseen.
- 2 Vanhat sähkötuotteet voivat pitää sisällään vaarallisia aineita, joten loppuun käytetyn laitteen oikea hävittäminen ehkäisee ympäristö- ja terveyshaittoja. Vanha laitteesi saattaa pitää sisällään uudelleen käytettäviä osia, joita voidaan

käyttää korjaamaan muita tuotteita sekä arvokkaita materiaaleja, joita voidaan kierrättää rajoitettujen resurssien säästämiseksi.

- 3 Voit viedä laitteesi joko liikkeeseen, josta hankit laitteen, tai ottaa yhteyttä paikallishallintosi ympäristötoimistoon koskien lähintä valtuutettua WEEE -keräyspistettä. Kaikkein viimeisimmät tiedot koskien maatasi, ks. osoitteessa [www.lg.com/global/recycling](http://www.lg.com/global/recycling)

## FRANÇAIS

### Recyclage de votre ancien appareil

- 1 Ce symbole de poubelle barrée d'une croix indique que votre équipement électrique et électronique (EEE) ne doit pas être jeté avec les ordures ménagères. Il doit faire l'objet d'un tri et d'une collecte sélective séparée.
- 2 Les équipements électriques que vous jetez peuvent contenir des substances dangereuses. Il est donc important de les jeter de façon appropriée afin d'éviter des impacts négatifs sur l'environnement et la santé humaine. L'équipement que vous jetez peut également contenir des pièces réutilisables pour la réparation d'autres produits ainsi que des matériaux précieux pouvant être recyclés pour préserver les ressources de la planète.
- 3 Vous pouvez rapporter votre appareil

au commerçant qui vous l'a vendu ou contacter votre collectivité locale pour connaître les points de collecte de votre EEE. Vous trouverez également des informations à jour concernant votre pays en allant sur [www.quefairedemesdechets.fr](http://www.quefairedemesdechets.fr)

## DEUTSCH

### Entsorgung Ihrer Altgeräte

- 1 Das durchgestrichene Symbol eines fahrbaren Abfallbehälters weist darauf hin, dass Elektro- und Elektronik-Produkte (WEEE) getrennt vom Hausmüll entsorgt werden müssen.
- 2 Alte elektrische Produkte können gefährliche Substanzen enthalten, die eine korrekte Entsorgung dieser Altgeräte erforderlich machen, um schädliche Auswirkungen auf die Umwelt und die menschliche Gesundheit zu vermeiden. Ihre ausgedienten Geräte können wiederverwendbare Teile enthalten, mit denen möglicherweise andere Produkte repariert werden können, aber auch sonstige wertvolle Materialien enthalten, die zur Schonung knapper Ressourcen recycelt werden können.
- 3 Sie können Ihr Gerät entweder in den Laden zurückbringen, in dem Sie das Produkt ursprünglich erworben haben oder Sie kontaktieren Ihre Gemeindeabfallstelle

für Informationen über die nächstgelegene autorisierte WEEE Sammelstelle. Sie sind persönlich dafür verantwortlich, dass Sie sämtliche personenbezogene Daten, die sich auf dem Gerät befinden, vor der Entsorgung Ihres Gerätes löschen. Die aktuellsten Informationen für Ihr Land finden Sie unter [www.lg.com/global/recycling](http://www.lg.com/global/recycling)

### ΕΛΛΗΝΙΚΑ

#### Απόρριψη της παλιάς σας συσκευής

- 1 Αυτό το διαγραμμένο σύμβολο του τροχοφόρου κάδου υποδεικνύει ότι τα απόβλητα ηλεκτρικών και ηλεκτρονικών προϊόντων (ΑΗΗΕ) πρέπει να απορρίπτονται χωριστά από τα γενικά οικιακά απορρίμματα.
- 2 Τα παλιά ηλεκτρικά προϊόντα μπορεί να περιέχουν επικίνδυνες ουσίες και ως εκ τούτου η σωστή απόρριψη της παλιάς σας συσκευής αποτρέπει ενδεχόμενες αρνητικές συνέπειες για το περιβάλλον και την ανθρώπινη υγεία. Η παλιά σας συσκευή μπορεί να περιέχει επαναχρησιμοποιήσιμα ανταλλακτικά που θα μπορούσαν να χρησιμοποιηθούν για την επισκευή άλλων προϊόντων, καθώς και άλλα υλικά αξίας που μπορούν να ανακυκλωθούν για εξοικονόμηση των περιορισμένων φυσικών πόρων.
- 3 Μπορείτε να πάτε τη συσκευή σας, είτε στο κατάστημα από το

οποίο αγοράσατε το προϊόν, ή να επικοινωνήσετε το τοπικό γραφείο απορριμμάτων για λεπτομέρειες σχετικά με το πλησιέστερο εγκεκριμένο σημείο συλλογής ΑΗΗΕ (Απόβλητα Ηλεκτρικών και Ηλεκτρονικών Συσκευών). Για τις πιο πρόσφατες πληροφορίες για τη χώρα σας επισκεφθείτε τη διεύθυνση [www.lg.com/global/recycling](http://www.lg.com/global/recycling)

### MAGYAR

#### A régi készülék ártalmatlanítása

- 1 A leselejtezett elektromos és elektronikai termékeket a háztartási hulladéktól elkülönítve kell begyűjteni, a jogszabályok által kijelölt módon és helyen.
- 2 Régi készülékeinek megfelelő leselejtezése segíthet megelőzni az esetleges egészségre vagy környezetre ártalmas hatásokat.
- 3 Ha további információra van szüksége régi készülékeinek leselejtezésével kapcsolatban, lépjen kapcsolatba velünk a szelektalok.hu oldalon ahol tájékoztatjuk Önt visszavételi, átvételi, gyűjtési és kezelési kötelezettségeinkről.

### ITALIANO

#### Smaltimento delle apparecchiature obsolete

- 1 Tutte le apparecchiature elettriche ed elettroniche, contrassegnate



da questo simbolo (“bidone della spazzatura barrato da una croce”), devono essere raccolte e smaltite separatamente rispetto agli altri rifiuti urbani misti mediante impianti di raccolta specifici installati da enti pubblici o dalle autorità locali. Si ricorda che gli utenti finali domestici possono consegnare gratuitamente le apparecchiature elettriche ed elettroniche a fine vita presso il punto vendita all’atto dell’acquisto di una nuova apparecchiatura equivalente. Gli utenti finali domestici possono inoltre consegnare gratuitamente apparecchiature elettriche ed elettroniche di piccolissime dimensioni (non eccedenti i 25 cm) a fine vita direttamente presso un punto vendita a ciò abilitato, senza obbligo di acquistare una apparecchiatura nuova di tipo equivalente. Si prega di informarsi previamente presso il punto vendita prescelto circa tale ultima modalità di conferimento dell’apparecchiatura a fine vita.

- 2 Il corretto smaltimento dell’unità obsoleta contribuisce a prevenire possibili conseguenze negative sulla salute degli individui e sull’ambiente. Una gestione responsabile del fine vita delle apparecchiature elettriche ed elettroniche da parte degli utenti contribuisce al riutilizzo, al riciclaggio ed al recupero sostenibile dei prodotti obsoleti e dei relativi

materiali.

- 3 Per informazioni più dettagliate sullo smaltimento delle apparecchiature obsolete, contattare l’ufficio del comune di residenza, il servizio di smaltimento rifiuti o il punto vendita in cui è stato acquistato il prodotto. ([www.lg.com/global/recycling](http://www.lg.com/global/recycling))

## LATVIEŠU

### Jūsu vecās ierīces likvidēšana

- 1 Šis simbols – pārsvītrotā atkritumu tvertne uz riteņiem – norāda, ka elektrisko un elektronisko iekārtu atkritumi (EEIA) jālikvidē atsevišķi no sadzīves atkritumu plūsmas.
- 2 Veci elektriskie izstrādājumi var saturēt bīstamas vielas, tādēļ jūsu vecās ierīces pareiza likvidēšana palīdzēs novērst iespējamās negatīvās sekas videi un cilvēka veselībai. Jūsu vecā ierīce var saturēt vairākkārt izmantojamas detaļas, kuras var izmantot citu izstrādājumu remontam, un citus vērtīgus materiālus, kurus var pārstrādāt, tādējādi saglabājot ierobežotus resursus.
- 3 Jūs varat aiznest ierīci vai nu uz veikalu, kurā šo izstrādājumu iegādājieties, vai sazināties ar vietējās pašvaldības atkritumu savākšanas iestādi un uzzināt sīkāku informāciju par tuvāko oficiālo EEIA savākšanas punktu. Jaunāko informāciju par savu valsti skatiet

vietnė [www.lg.com/global/recycling](http://www.lg.com/global/recycling)

### LIETUVIŲ

#### **Seno prietaiso utilizavimas**

- 1 Išbrauktos šiukšlių dėžės simbolis rodo, kad elektros ir elektronikos įrangos atliekos (EE[A] turėtų būti utilizuojamos atskirai nuo komunalinių atliekų.
- 2 Senoje elektrinėje įrangoje gali būti pavojingų medžiagų, taigi tinkamas seno prietaiso utilizavimas padės apsaugoti nuo galimų neigiamų pasekmių aplinkai ir žmonių sveikatai. Jūsų sename prietaise gali būti dalių, kurias galima panaudoti dar kartą taisant kitą įrangą ir kitų vertingų medžiagų, kurios gali būti perdirbamos siekiant tausoti ribotus išteklius.
- 3 Savo prietaisą galite nugabenti į parduotuvę, kurioje įrangą įsigijote, arba susisiekiote su vietos valdžios atliekų tarnyba norėdami gauti artimiausio EE[A] surinkimo vietos informaciją. Norėdami gauti daugiau informacijos savo šalyje, apsilankykite [www.lg.com/global/recycling](http://www.lg.com/global/recycling)

### NETHERLANDS

#### **Verwijdering van uw oude apparaat**

- 1 Dit symbool van de doorgekruiste vuilnisbak geeft aan dat afgedankte elektrische en elektronische producten (WEEE) bijzonderlijk van

het huishoudelijke afval moeten worden verwijderd.

- 2 Oude elektrische producten kunnen gevaarlijke stoffen bevatten, dus een juiste verwijdering van uw oude apparaat helpt bij het voorkomen van mogelijke negatieve gevolgen voor het milieu en de volksgezondheid. Uw oude apparaat kan herbruikbare onderdelen bevatten die gebruikt zouden kunnen worden voor het repareren van andere producten, en andere waardevolle materialen die kunnen worden gerecycled voor het behoud van beperkte grondstoffen.
- 3 U kunt uw apparaat meenemen naar de winkel waar u het product hebt gekocht, of u kunt contact opnemen met uw plaatselijke afvalinstantie voor de gegevens van uw dichtstbijzijnde geautoriseerde WEEE-verzamelpunt. Voor de meest geactualiseerde informatie voor uw land wordt verwezen naar [www.lg.com/global/recycling](http://www.lg.com/global/recycling)

### NORSK

#### **Avhending av gamle apparater**

- 1 Dette symbolet av en utkrysset avfallsdunk indikerer at kasserte elektriske og elektroniske produkter (WEEE) skal kastes separat fra husholdningsavfall og leveres til den kommunale resirkulering.
- 2 Gamle elektriske produkter kan

inneholde farlige stoffer, så korrekt avfallshåndtering av det gamle apparatet bidrar til å hindre potensielt negative konsekvenser for miljøet og andres helse. Gamle apparater kan inneholde gjenbrukbare deler som kan brukes til å reparere andre produkter og andre verdifulle materialer som kan resirkuleres for å bevare begrensede ressurser.

- 3 Du kan bringe apparatet enten til butikken der du kjøpte produktet, eller ta kontakt med den lokale myndighetens avfallskontor for informasjon om nærmeste autoriserte innsamlingspunkt for el-avfall (WEEE-avfall). For den mest oppdaterte informasjonen for ditt land, gå til [www.lg.com/global/recycling](http://www.lg.com/global/recycling)

## POLSKI

### Utylizacja starego urządzenia

- 1 Symbol przekreślonego pojemnika na odpady na kółkach oznacza, że produkty elektryczne lub elektroniczne (WEEE) należy zutylizować poza obiegiem odpadów komunalnych.
- 2 Stare produkty elektroniczne mogą zawierać niebezpieczne substancje. Właściwa utylizacja starego urządzenia pozwoli uniknąć potencjalnych negatywnych skutków dla środowiska i zdrowia. Stare urządzenie może zawierać

części wielokrotnego użytku, które mogą zostać wykorzystane do naprawy innych produktów lub inne wartościowe materiały, które można przetworzyć, aby oszczędzać zasoby naturalne.

- 3 Możesz zanieść urządzenie do sklepu, w którym zostało kupione lub skontaktować się z lokalnym urzędem gospodarki odpadami, aby uzyskać informacje o najbliższym punkcie zbiórki WEEE. Aby uzyskać aktualne informacje z zakresu gospodarki odpadami obowiązujące w Twoim kraju, odwiedź stronę <http://www.lg.com/global/sustainability/environment/take-back-recycling/global-network-europe> (plik PDF : „For more information about how to recycle LG products in your country”).

## PORTUGUÊS

### Eliminação do seu aparelho usado

- 1 Este símbolo de um caixote do lixo com rodas e linhas cruzadas sobrepostas indica que os resíduos de produtos elétricos e eletrônicos (WEEE) devem ser eliminados separadamente do lixo doméstico.
- 2 Os produtos elétricos usados podem conter substâncias perigosas, pelo que, a eliminação correta do seu aparelho usado pode contribuir para evitar potenciais danos para o ambiente e saúde humana. O seu aparelho usado pode conter peças

reutilizáveis que podem ser usadas para reparar outros aparelhos e materiais úteis que podem ser reciclados para preservar os recursos limitados.

- 3 Pode levar o seu aparelho à loja onde o adquiriu ou contactar a sua entidade local de recolha e tratamento de resíduos para obter mais informações sobre o ponto de recolha WEEE autorizado mais próximo. Para obter informações mais atualizadas relativas ao seu país, visite [www.lg.com/global/recycling](http://www.lg.com/global/recycling)

## ROMÂNĂ

### Eliminarea aparatului vechi

- 1 Simbolul de pe etichetă indică faptul că deșeurile electrice și electronice (WEEE) trebuie eliminate separat de celelalte deșeuri.
- 2 Produsele electrice și electronice vechi conțin substanțe periculoase. Astfel, prin eliminarea corespunzătoare veți contribui la prevenirea deteriorării mediului înconjurător și al sănătății umane. Este posibil ca dispozitivul dvs. vechi să conțină piese componente, care pot fi folosite pentru repararea altor produse sau materiale importante care pot fi reciclate în scopul economisirii resurselor limitate.
- 3 Dispozitivul vechi poate fi returnat magazinului de unde a fost achiziționat, sau puteți contacta firma responsabilă

pentru eliminarea deșeurilor, în scopul aflării locației unității autorizate pentru reciclarea deșeurilor electrice și electronice (WEEE). Pentru informații mereu actualizate și referitoare la țara dvs. vă rugăm vizitați pagina web [www.lg.com/global/recycling](http://www.lg.com/global/recycling)

## SRPSKI

### Odlaganje starog aparata

- 1 Ovaj simbol precrtana kanta za smeće pokazuje da električni i elektronski otpad (WEEE) treba da se odlaže odvojeno od običnog komunalnog otpada.
- 2 Stari električni aparati mogu da sadrže otrovne supstance, tako da će pravilno odlaganje Vašeg starog aparata pomoći sprečavanju pojave negativnih posledica po životnu sredinu i zdravlje ljudi. Vaš stari aparat može da sadrži delove za višekratnu upotrebu koji se mogu koristiti za zamenu drugih proizvoda i druge vredne materijale koji se mogu reciklirati radi očuvanja ograničenih resursa.
- 3 Vaš aparat možete da odnesete u radnju gde ste ga kupili ili da kontaktirate lokalnu vladinu kancelariju za otpad kako biste dobili informaciju o najbližoj autorizovanoj WEEE stanici za odlaganje ovog otpada. Za najnovije informacije za Vašu zemlju, molimo Vas da pogledate web stranicu [www.lg.com/](http://www.lg.com/)

*global/recycling*

### SLOVENSKY

#### Zneškodnenie starého spotrebiča

- 1 Tento symbol prečiarknutého odpadkového koša na kolieskach znamená, že odpad z elektrických a elektronických zariadení (WEEE) musí byť zneškodnený samostatne od komunálneho odpadu.
- 2 Staré elektrické produkty môžu obsahovať nebezpečné latky, preto správne zneškodnenie vášho starého spotrebiča pomôže zabrániť potenciálnym negatívnym dopadom na prostredie a ľudské zdravie. Váš starý spotrebič môže obsahovať diely, ktoré možno opätovne použiť na opravu iných produktov, a iné cenné materiály, ktoré možno recyklovať s cieľom chrániť obmedzené zdroje.
- 3 Svoj spotrebič môžete zaniest' do predajne, kde ste produkt zakúpili, alebo sa môžete obrátiť na oddelenie odpadov miestnej samosprávy a požiadať o informácie o najbližšom zbernom mieste odpadu z elektrických a elektronických zariadení (WEEE). Najnovšie informácie platné pre vašu krajinu nájdete na stránke [www.lg.com/global/recycling](http://www.lg.com/global/recycling)

### SLOVENŠČINA

Odstranjanje vašega starega

aparata

- 1 Na izdelku prečrtan simbol smetnjaka opozarja, da je treba odpadne električne in elektronske izdelke (OEEI) odstranjevati ločeno od ostalih komunalnih odpadkov.
- 2 Odpadni električni izdelki lahko vsebujejo nevarne snovi, zato s pravilnim odstranjevanjem starega aparata pripomorete k preprečevanju morebitnih negativnih vplivov na okolje in zdravje ljudi. Vaš stari aparat lahko vsebuje dele, ki bi jih bilo mogoče uporabiti za popravilo drugih izdelkov, in druge dragocene materiale, ki jih je mogoče reciklirati in s tem ohranjati omejene vire.
- 3 Vaš aparat lahko odnesete bodisi v trgovino, kjer ste kupili ta izdelek, ali pa se obrnite na lokalni urad za odstranjevanje odpadkov glede podrobnosti o najbližjem pooblaščenem zbirnem mestu za OEEI. Za najnovejše informacije za vašo državo si oglejte [www.lg.com/global/recycling](http://www.lg.com/global/recycling)

### ESPAÑOL

#### Símbolo para marcar AEE

- 1 El símbolo del contenedor de basura tachado con un aspa indica que la recogida separada de aparatos eléctricos y electrónicos (AEE) debe realizarse de manera separada.
- 2 Los productos eléctricos antiguos pueden contener sustancias

peligrosas de modo que la correcta eliminación del antiguo aparato ayudará a evitar posibles consecuencias negativas para el medio ambiente y para la salud humana. El antiguo aparato puede contener piezas reutilizables que podrían utilizarse para reparar otros productos y otros materiales valiosos que pueden reciclarse para conservar los recursos limitados.

3 Este producto contiene pilas y/o acumuladores. Siempre que no sea necesaria la intervención de un profesional cualificado para ello, y antes del depósito final del producto en las instalaciones de recogida selectiva, usted debe extraer las pilas y acumuladores de forma segura y separadamente para su adecuada gestión.

4 Puede llevar el aparato a cualquiera de los centros autorizados para su recogida. Para obtener la información más actualizada para su país por favor visite [www.lg.com/global/recycling](http://www.lg.com/global/recycling)

### SVENSKA

#### Kassera den gamla apparaten

1 Den överkorsade soptunnesymbolen indikerar att elektroniskt och elektriskt avfall (WEEE) ska kasseras separat från hushållsavfallet och lämnas in till av kommunen anvisat ställe för återvinning.

2 Gamla elektroniska och elektriska produkter kan innehålla farliga substanser så korrekt avfallshandling av produkten förhindrar negativa konsekvenser för miljön och den mänskliga hälsan. Din gamla apparat kan innehålla återanvändningsbara delar som används för att reparera andra produkter och andra värdefulla material som kan återvinnas för att spara begränsade resurser.

3 Du kan ta din gamla apparat till butiken där du köpte produkten, eller kontakta din kommun för information om närmaste WEEE-uppsamlingsställe. För den mest uppdaterade informationen i ditt land, gå till [www.lg.com/global/recycling](http://www.lg.com/global/recycling)

## TÜRKÇE

### WEEE/RoHS Eski cihazınızın atılması

1 Tüm elektrikli ve elektronik atıklar, devlet ya da yerel yetkililer tarafından belirlenen toplama merkezlerinde ayrı olarak imha edilmelidir. Atık elektrikli ve elektronik

aletler belediyeler tarafından kurulan toplama noktalarına teslim edilmeli veya aldığınız yeni ürünü satıcınıza adresinize teslim ederken, satıcınızdan atık elektrikli ve elektronik aletinizi teslim almasını istemelisiniz.

- 2 Atık ürünün doğru imhası çevre ve insan sağlığı üzerindeki potansiyel olumsuz sonuçların engellenmesine yardımcı olacaktır.
- 3 Eski ürününüzün imhası hakkında daha fazla bilgi için lütfen belediyeniz ya da ürünü aldığınız mağaza ile iletişime geçiniz.  
([www.lg.com/global/recycling](http://www.lg.com/global/recycling))
- 4 AEEE Yönetmeliğine Uygundur.

5 Bu işareti içeren ürünler tehlikeli madde içerebilir. Ürünler içerisindeki tehlikeli maddeler çevre kirlenmesine veya yaralanma/ölüme sebebiyet verebilir.

## [India only]

### Disposal of your old appliance (as per e-waste Rules)



1. When this crossed out wheeled bin symbol is depicted on the product and its operator's manual, it means the product is covered by the e-waste Management and Handling Rules, 2011 and are meant to be recycled, dismantled, refurbished or disposed off.

#### 2

#### Do's

- a. The product is required to be handed over only to the authorized recycler for disposal.
- b. Keep the product in isolated area, after it becomes non-functional/ unrepairable so as to prevent its accidental breakage.

#### Don't

- a. The product should not be opened by the user himself/herself, but only by authorized service personnel.
- b. The product is not meant for re-sale to any unauthorized agencies/scrap dealer/kabariwalah.
- c. The product is not meant for mixing

into household waste stream.

- d. Do not keep any replaced spare part(s) from the product in exposed area.

3. Any disposal through unauthorized agencies/person will attract action under Environment (Protection) Act 1986.

4. "This product is complied with the requirement of Hazardous Substances as specified under Rule 13 (1) & (2) of the E-Waste (Management & Handling) Rules, 2011".

5. To locate a nearest collection centre or call for pick-up (limited area only) for disposal of this appliance, please contact Toll Free No. **1800-315-9999** / **1800-180-9999** for details.

All collection centre and pick up facilities are done by third parties with

**LG Electronics India Pvt. Ltd.**

Merely as a facilitator.

For more detailed information, please visit : <http://www.lge.com/in>.



## अपने पुराने निपटान के उपकरण ( ई-अपशिष्ट नियम के अनुसार )



एवं (2) के तहत निर्दिष्ट खतरनाक पदार्थों की आवश्यकता का पालन करता है।  
5. उपरोक्त पदार्थों के निपटारन के लिए नजदीकी निपटारन ससथान (सकीर्ण क्षेत्र) में काल करें। अधिक जानकारी के लिए हमारे टोल फ्री नंबर 1800-315-9999 / 1800-180-9999 पर काल करें। सभी संग्रहण केंद्र व पिक-अप की सुविधाएं किसी थर्ड- पार्टी जो LG Electronics India Pvt. Ltd. को अपनी सेवाएं प्रदान कर रही हों, से करवाएं।  
ज्यादा जानकारी के लिए देखें वेब:साईट :  
<http://www.lge.com/in>

1. जब इस काटे गए पहिये वाले बिन का चिन्ह किसी उपकरण और इसके ऑपरेटर की पुस्तिका के साथ सलग्न होता है तो इसका मतलब है कि इसे "ई-अपशिष्ट" (प्रबंधन और हथालन) नियम २०११ के अंतर्गत सम्मिलित किया गया है, और इसे नवीनीकरणकरण, विघटन और निपटान के लिए बनाया गया है।

2. करें :

क. उपकरण को सिर्फ अधिकृत पुनः नवीनीकरणकर्ता को ही निपटारण करने हेतु हस्तांतरित करें।

ख. जब उपकरण कार्यरत न हो इसे अलग क्षेत्र में रखें ताकि उपकरण से होने वाली दुर्घटनाओं से बचा जा सके।

न करें :

क. इस उपकरण को स्वयं/खुद नहीं खोलना चाहिए। उपकरण को केवल अधिकृत अधिकारी के द्वारा ही खोला जाना चाहिए।

ख. इस उपकरण को पुनः बिक्री के लिए किसी भी कबाड़ीवाला / भंगार-वाला / अनाधिकृत संस्था को न दें।

ग. इस उपकरण को किसी धरेलू अपशिष्ट सामान के साथ मिलाकर न रखें।

घ. उपकरण के बदले हुए या आंतरिक पुरजो को खुले क्षेत्र में न रखें।

3. यदि किसी अनाधिकृत विभाग या व्यक्ति के द्वारा निपटारन किया जाता है तो यह पर्यावरण (सुरक्षा) धारा १९८६ के अंतर्गत आता है।

4. यह उत्पाद ई-अपशिष्ट (प्रबंधन और हथालन) नियम 2011 के अन्तर्गत 13(1)

## Jordan Only



### Disposal of your appliance

The symbol indicating separate collection for electrical and electronic equipment consists of the crossed-out wheeled bin.

التخلص من الجهاز الخاص بك.

الرمز الذي يشير إلى مجموعة منفصلة من المعدات الإلكترونية والكهربائية هو عبارة عن صندوق قمامة بعجلات ومشطوب.



## CIS only

### [Russian]



Символ «петля Мебиуса» указывает на возможность утилизации упаковки. Символ может быть дополнен обозначением материала упаковки в виде цифрового и/или буквенного обозначения.

### [Kazakhstan]



Символ қаптаманы жою мүмкіндігін көрсетеді. Символ сандық код және/немесе әріп белгілері түріндегі қаптама материалының белгісімен толықтырылуы мүмкін.

## Ukraine RoHS

### [Українська]

Обмеження України на наявність небезпечних речовин

Устаткування відповідає вимогам технічного регламенту щодо обмеженого використання небезпечних речовин в електричному і електронному обладнанні.

### [English]

Ukraine Restriction of Hazardous Substances

The equipment complies with requirements of the Technical Regulation, in terms of restrictions for the use of certain dangerous substances in electrical and electronic equipment.

## [中国的]

### 1. 产品中有害物质的名称及含量

#### 附件

部件名称	有害物质			
	铅 (Pb)	汞 (Hg)	镉 (Cd)	六价铬(Cr (VI))
PCB板*	X	0	0	0
金属支架*	X	0	0	0
适配器*	X	0	0	0
附件	X	0	0	0

部件名称	有害物质	
	多溴联苯 (PBB)	多溴二苯醚 (PBDE)
PCB板*	0	0
金属支架*	0	0
适配器*	0	0
附件	0	0

本表格依据SJ/T 11364 的规定编制。

○：表示该有害物质在该部件所有均质材料中的含量均在GB/T 26572 规定的限量要求以下。

×：表示该有害物质至少在该部件的某一均质材料中的含量超出GB/T 26572 规定的限量要求。

标记为X的部品以现在的技术尚不能减少有害物质。 LG 电子正在尽最大的努力开发有害物质减少技术。

“\*”表示为可选件，部品依据不同产品和型号

所有在中国销售的电子电气产品必须标有环保使用期限的标识。该标识的环保使用期限是指在正常使用条件如温度、湿度。



产品附件



电池：仅适用于可充电电池

## The marking and certifications

### (1) Malaysia



### (2) Israel

MoC: 51-40411  
MoC: 51-40622

### (3) Singapore

Complies with  
IMDA Standards  
DB102260

### (4) ICASA (SOUTH AFRICA)



### (5) UAE



**(6) Russia, Belarus, Kazakhstan****(7) Belarus**

Версия программного обеспечения беспроводного модуля связи: 1.0

**(8) Australia, New Zealand**

The use of the 5,150 – 5,350 MHz band is restricted to indoor use only. This restriction exists in the countries Australia (AU) and New Zealand (NZ). (For Wi-Fi/Bluetooth built-in model or Wi-Fi built-in model)

“RF Radiation Exposure Statement

This equipment shall be installed and used at a minimum distance of 20 cm from the human body.”

## (9) Thailand only

[ข้อความนี้ใช้สำหรับรุ่นที่มีการรองรับอุปกรณ์ไร้สายเท่านั้น เช่น Wi-Fi, Bluetooth, เป็นต้น]



**nab.**

เครื่องวิทยุคมนาคมนี้ ด้รับยกเว้น ไม่ต้องได้  
รับใบอนุญาตให้มี ใ้ซึ่งเครื่องวิทยุคมนาคม  
หรือตั้งสถานีวิทยุคมนาคมตามประกาศ กสทช.  
เรื่อง เครื่องวิทยุคมนาคม และสถานีวิทยุ  
คมนาคมที่ด้รับยกเว้นไม่ต้องได้รับใบอนุญาต  
วิทยุคมนาคมตามพระราชบัญญัติวิทยุคมนาคม  
พ.ศ. 2498



**nab.** | โทรคมนาคม

กำกับดูแลเพื่อประชาชน

Call Center 1200 (InSW)

## (10) Nigeria

Connection and use of this communications  
equipment is permitted by the Nigerian  
Communications Commission

## (11) Indonesia

32168/SDPPI/2013  
2879



## НАИМЕНОВАНИЕ И АДРЕС ПРОИЗВОДИТЕЛЯ/ АТАУЫ ЖӘНЕ ӨНДІРУШІНІҢ МЕКЕНЖАЙЫ/ НАЙМЕНУВАННЯ ТА АДРЕСА ВИРОБНИКА

English	
<b>Name</b>	Seromics.co.Ltd
<b>Address</b>	#36 Suchul-Daero,9 Gil Gumi Gyeongbuk Korea
Russia	
<b>Name</b>	Seromics Co., Ltd
<b>Address</b>	д. 36, проул. 9 улицы Сучхул, г. Куми, Кёнсан-Пукто, Республика Корея
Ukraine	
<b>Name</b>	Seromics Co., Ltd
<b>Address</b>	буд. 36, провул. 9 вулиці Сучхул, м. Гумі, Північна провінція Кьонсан, Республіка Корея
Kazakhstan	
<b>Name</b>	Сероникс Ко., Лтд
<b>Address</b>	36 ү., Сучуль-даеро 9 к., Гуми қ., Гёнсанбук-до, Корея Республикасы

## НАИМЕНОВАНИЕ И АДРЕС ИМПОРТЕРА/ АТАУЫ ЖӘНЕ ИМПОРТЕРДІҢ МЕКЕНЖАЙЫ

	Russia	Kazakhstan	Belarus
<b>Name</b>	ООО «ЛГ Электроникс РУС»	«Эл Джи Электроникс Алматы Казахстан» ЖШС	ООО «ЛГ Электроникс РУС»
<b>Address</b>	143160, РФ, Московская область, Рузский район, СП Дороховское, 86-й км. Минского шоссе, д.9.	Қазақстан Республикасы, 050061, Алматы қ., Алатау ауданы, Самғау ықшамауданы, Көкөрай көш., 2/9 үй.	143160, РФ, Московская область, Рузский район, СП Дороховское, 86-й км. Минского шоссе, д.9.

## НАИМЕНОВАНИЕ И АДРЕС СЕРВИСНОГО ПРЕДСТАВИТЕЛЬСТВА/ ҚЫЗМЕТІ ӨКІЛІНІҢ АТЫ МЕН МЕКЕН-ЖАЙЫ/ НАЙМЕНУВАННЯ ТА АДРЕСА СЕРВІСНОГО ПРЕДСТАВНИЦТВА

### РУССКИЙ

Претензии (предложения) по качеству товара, ремонту и техническому обслуживанию товара принимает: Сервисный филиал ООО «ЛГ Электроникс РУС», 125047, Россия, Москва, 4-й Лесной переулок, 4.  
Информацию о сервисных центрах можно получить в службе поддержки клиентов по тел.: 8-800-200-76-76

### ҚАЗАҚША

Қазақстан Республикасы территориясында тұтынушылардан келіп түскен талаптар мен ұсыныстарды қарайтын және тауарды жөндеу мен техникалық қызмет көрсететін ұжым: «Эл Джи Электроникс Алматы Қазақстан» ЖШС, Қазақстан Республикасы, 050061, Алматы қ., Алатау ауданы, Самғау ықшамауданы, Көкөрай көш., 2/9 үй. Басқа сервис орталықтары жайында мағлұматты “Тұтынушыға қызмет көрсету орталығына” телефон шалу арқылы білуге болады.

### УКРАЇНСЬКА

Претензії (пропозиції) щодо якості товару, ремонту чи технічного обслуговування Ви можете надіслати за адресою: ТОВ «ЕКОВІС ІНТЕРНЕТШІЛ» 03062, Україна, Київ, пр-т. Перемоги 67. Інформацію про адреси сервісних центрів ви можете отримати, звернувшись до Служби підтримки клієнтів: Тел.: 0-800-303-000.

## Wireless Specifications

### ENGLISH

Wireless module Specifications	
Wireless LAN (IEEE 802.11a/b/g/n)	
Frequency range (MHz)	Output power (Max.) (dBm)
2400 to 2483.5 5150 to 5825	802.11a : 18 802.11b : 20 802.11g : 20 802.11n – 2.4 GHz : 20 802.11n – 5 GHz : 18
<ul style="list-style-type: none"> <li>• As band channels can vary per country, the user cannot change or adjust the operating frequency. This product is configured for the regional frequency table.</li> <li>• For consideration of the user, this device should be installed and operated with a minimum distance of 20 cm between the device and the body.</li> </ul> <p>* "IEEE 802.11ac" is not available in all countries.</p>	

**ČESKY**

Bezdátový modul technické údaje	
Bezdátová síť LAN (IEEE 802.11a/b/g/n)	
Frekvenční rozsah (MHz)	Výstupní výkon (max.) (dBm)
2 400 až 2 483,5	802.11a: 18
5 150 až 5 825	802.11b: 20
	802.11g: 20
	802.11n – 2.4 GHz: 20
	802.11n – 5 GHz: 18
<ul style="list-style-type: none"> <li>• Kanály pásma se mohou v různých zemích lišit. Uživatel proto nemůže změnit ani upravit provozní frekvenci. Tento produkt je nastaven podle regionální tabulky frekvencí.</li> <li>• Informace pro uživatele: Toto zařízení by mělo být instalováno a používáno s minimální vzdáleností 20 cm mezi zařízeními a vaším tělem.</li> </ul>	
* Standard "IEEE 802.11ac" není dostupný ve všech zemích.	

**DANSK**

<b>Specifikationer for trådløst modul</b>	
<b>Trådløst LAN (IEEE 802.11a/b/g/n)</b>	
<b>Frekvensområde (MHz)</b>	<b>Udgangseffekt (maks.) (dBm)</b>
2.400 til 2.483,5 5.150 til 5.825	802.11a : 18 802.11b : 20 802.11g : 20 802.11n – 2.4 GHz : 20 802.11n – 5 GHz : 18
<ul style="list-style-type: none"> <li>• Da båndkanaler kan variere fra land til land, kan brugeren ikke ændre eller justere driftsfrekvensen. Dette produkt er konfigureret til den regionale frekvenstabel.</li> <li>• Af hensyn til brugeren, bør denne enhed installeres og betjenes med en minimumsafstand på 20 cm mellem enheden og kroppen.</li> </ul>	
* "IEEE 802.11ac" er ikke tilgængelig i alle lande.	

**ESPAÑOL**

<b>Especificaciones del módulo inalámbrico</b>	
<b>LAN inalámbrica (IEEE 802.11a/b/g/n)</b>	
<b>Rango de frecuencias (MHz)</b>	<b>Potencia de salida (máx.) (dBm)</b>
De 2400 a 2483,5 De 5150 a 5825	802.11a : 18 802.11b : 20 802.11g : 20 802.11n – 2.4 GHz : 20 802.11n – 5 GHz : 18
<ul style="list-style-type: none"> <li>• Dado que los canales de banda pueden variar según el país, el usuario no puede cambiar ni ajustar la frecuencia de funcionamiento. Este producto está configurado para la tabla de frecuencias de la región.</li> <li>• Por seguridad del usuario, este dispositivo se debe instalar y utilizar con una distancia mínima de 20 cm entre el dispositivo y el cuerpo.</li> </ul> <p>* "IEEE 802.11ac" no está disponible en todos los países.</p>	

**SUOMI**

<b>Langattoman moduulin tekniset tiedot</b>	
<b>WLAN (IEEE 802.11a/b/g/n)</b>	
<b>Taajuusalue (MHz)</b>	<b>Lähtöteho (enintään) (dBm)</b>
2 400 – 2 483,5 5 150 – 5 825	802.11a : 18 802.11b : 20 802.11g : 20 802.11n – 2.4 GHz : 20 802.11n – 5 GHz : 18
<ul style="list-style-type: none"> <li>• Koska taajuuskanavat voivat vaihdella maittain, käyttäjä ei voi muuttaa tai säätää käyttötaajuutta. Tämä tuote on määritetty paikallisen taajuustaulukon mukaisesti.</li> <li>• Käyttäjien on otettava huomioon, että laite on asennettava siten, että laitteen ja rungon väliin jää vähintään 20 cm.</li> </ul>	
* "IEEE 802.11ac" ei ole saatavana kaikissa maissa.	



**FRANÇAIS**

<b>Spécifications du Module sans fil</b>	
<b>LAN sans fil (IEEE 802.11a/b/g/n)</b>	
<b>Plage de fréquence (MHz)</b>	<b>Puissance en sortie (max.) (dBm)</b>
2 400 à 2 483,5 5 150 à 5 825	802.11a : 18 802.11b : 20 802.11g : 20 802.11n – 2.4 GHz : 20 802.11n – 5 GHz : 18
<ul style="list-style-type: none"> <li>• Les canaux de bande pouvant varier selon le pays, l'utilisateur ne peut pas modifier ni régler la fréquence de fonctionnement. Ce produit est configuré conformément au tableau de fréquences régionales.</li> <li>• Pour plus de sécurité, ce périphérique doit être installé et utilisé à une distance minimale de 20 cm de votre corps.</li> </ul>	
* La norme «IEEE 802.11ac» n'est pas disponible dans tous les pays.	

**DEUTSCH**

<b>Wireless-Module Technische Daten</b>	
<b>WLAN (IEEE 802.11a/b/g/n)</b>	
<b>Frequenzbereich (MHz)</b>	<b>Ausgangsleistung (max.) (dBm)</b>
2.400 bis 2.483,5	802.11a : 18
5.150 bis 5.825	802.11b : 20
	802.11g : 20
	802.11n – 2.4 GHz : 20
	802.11n – 5 GHz : 18
<ul style="list-style-type: none"> <li>• Da Frequenzkanäle sich je nach Land unterscheiden können, kann der Benutzer die Betriebsfrequenz nicht ändern oder anpassen. Dieses Gerät ist entsprechend der regionalen Frequenztabelle eingestellt.</li> <li>• Dieses Gerät sollte zum Schutz des Benutzers mit einem Mindestabstand von 20 cm zwischen Gerät und Körper installiert und verwendet werden.</li> </ul> <p>* La norme «IEEE 802.11ac» n'est pas disponible dans tous les pays.</p>	

**ΕΛΛΗΝΙΚΑ**

<b>Προδιαγραφές ασύρματης μονάδας</b>	
<b>Ασύρματο δίκτυο LAN (IEEE 802.11a/b/g/n)</b>	
<b>Εύρος συχνοτήτων (MHz)</b>	<b>Ισχύς εξόδου (Μέγ.) (dBm)</b>
2.400 έως 2.483,5 5.150 έως 5.825	802.11a : 18 802.11b : 20 802.11g : 20 802.11n – 2.4 GHz : 20 802.11n – 5 GHz : 18
<ul style="list-style-type: none"> <li>• Καθώς τα κανάλια ζώνης μπορεί να διαφέρουν ανά χώρα, ο χρήστης δεν μπορεί να αλλάξει ή να προσαρμόσει τη συχνότητα λειτουργίας. Αυτό το προϊόν έχει διαμορφωθεί για τον πίνακα τοπικών συχνοτήτων.</li> <li>• Προς ενημέρωση του χρήστη, αυτή η συσκευή θα πρέπει να εγκατασταθεί και να λειτουργήσει με ελάχιστη απόσταση 20 εκ. μεταξύ της συσκευής και του σώματος.</li> </ul>	
* Το "IEEE 802.11ac" δεν είναι διαθέσιμο σε όλες τις χώρες.	

**MAGYAR**

<b>Vezeték nélküli modul specifikációi</b>	
<b>Vezeték nélküli LAN (IEEE 802.11a/b/g/n)</b>	
<b>Frekvenciatartomány (MHz)</b>	<b>Kimeneti teljesítmény (max.) (dBm)</b>
2400 és 2483,5 5150 és 5825	802.11a : 18 802.11b : 20 802.11g : 20 802.11n – 2.4 GHz : 20 802.11n – 5 GHz : 18
<ul style="list-style-type: none"> <li>• Mivel a sávcsatornák országonként eltérhetnek, a felhasználó nem változtathatja meg vagy állíthatja be a működési frekvenciát. Ezt a terméket a regionális frekvenciatáblázat szerint állították be.</li> <li>• A felhasználó biztonsága érdekében legalább 20 centiméteres távolságnak kell lennie közte és a készülék között felszerelés és működtetés közben.</li> </ul> <p>* Az "IEEE 802.11ac" nem érhető el minden országban.</p>	

**ITALIANO**

<b>Specifiche del modulo wireless</b>	
<b>LAN wireless (IEEE 802.11a/b/g/n)</b>	
<b>Gamma di frequenza (MHz)</b>	<b>Potenza in uscita (max.) (dBm)</b>
Da 2.400 a 2.483,5 Da 5.150 a 5.825	802.11a: 18 802.11b: 20 802.11g: 20 802.11n – 2.4 GHz: 20 802.11n – 5 GHz: 18
<ul style="list-style-type: none"> <li>• Dal momento che i canali della banda possono variare in base al paese, l'utente non può modificare o regolare la frequenza operativa. Questo prodotto è configurato in base alla tabella di frequenza regionale.</li> <li>• Nel rispetto della salute dell'utente, questo dispositivo deve essere installato e utilizzato a una distanza minima di 20 cm dal corpo umano.</li> </ul> <p>* Lo standard "IEEE 802.11ac" non è disponibile in tutti i paesi.</p>	

**NEDERLANDS**

<b>Draadloze module specificaties</b>	
<b>Draadloze LAN (IEEE 802.11a/b/g/n)</b>	
<b>Frequentiebereik (MHz)</b>	<b>Uitgangsvermogen (max.) (dBm)</b>
2400 tot 2483,5 5150 tot 5825	802.11a : 18 802.11b : 20 802.11g : 20 802.11n – 2.4 GHz : 20 802.11n – 5 GHz : 18
<ul style="list-style-type: none"> <li>• Omdat bandkanalen kunnen verschillen per land, kan de gebruiker de bedieningsfrequentie niet wijzigen of aanpassen. Dit product is geconfigureerd voor de regionale frequentietabel.</li> <li>• Het is optimaal voor de gebruiker als dit apparaat op minimaal 20 cm van het lichaam wordt geïnstalleerd en bediend.</li> </ul> <p>* "IEEE 802.11ac" is niet in alle landen beschikbaar.</p>	

## NORSK

Trådløs modell Spesifikasjoner	
Trådløst lokalnettverk (IEEE 802.11a/b/g/n)	
Frekvensområde (MHz)	Utgangseffekt (maks.) (dBm)
2400 til 2483,5 5150 til 5825	802.11a: 18 802.11b: 20 802.11g: 20 802.11n – 2.4 GHz: 20 802.11n – 5 GHz: 18
<ul style="list-style-type: none"> <li>• Båndkanaler kan variere fra land til land, og brukeren kan derfor ikke justere frekvensen som brukes. Dette produktet er konfigurert for den regionale frekvenstabellen.</li> <li>• Av hensyn til brukeren bør du sørge for at det er minst 20 cm mellom enheten og kroppen ved montering og betjening.</li> </ul> <p>* "IEEE 802.11ac" er ikke tilgjengelig i alle land.</p>	

**POLSKI**

<b>Dane techniczne bezprzewodowego modułu</b>	
<b>Bezprzewodowa sieć LAN (IEEE 802.11a/b/g/n)</b>	
<b>Zakres częstotliwości (MHz)</b>	<b>Moc wyjściowa (maks.) (dBm)</b>
Od 2400 do 2483,5	802.11a : 18
Od 5150 do 5825	802.11b : 20
	802.11g : 20
	802.11n – 2.4 GHz : 20
	802.11n – 5 GHz : 18
<ul style="list-style-type: none"> <li>• Z uwagi na to, że kanały pasma mogą różnić się w zależności od kraju, użytkownik nie może zmienić bądź regulować częstotliwości pracy. Produkt został skonfigurowany zgodnie z tabelą częstotliwości dla danego regionu.</li> <li>• Podczas montażu lub użytkowania urządzenia nie należy zbliżać się do niego na odległość mniejszą niż 20 cm.</li> </ul>	
* Standard "IEEE 802.11ac" nie jest dostępny we wszystkich krajach.	



**PORTUGUÊS**

<b>Especificações do Módulo sem fios</b>	
<b>LAN sem fios (IEEE 802.11a/b/g/n)</b>	
<b>Intervalo de frequência (MHz)</b>	<b>Potência de saída (máx.) (dBm)</b>
2400 a 2483,5 5150 a 5825	802.11a: 18 802.11b: 20 802.11g: 20 802.11n – 2.4 GHz: 20 802.11n – 5 GHz: 18
<ul style="list-style-type: none"> <li>• Uma vez que os canais de banda podem variar consoante o país, o utilizador não pode alterar nem ajustar a frequência de funcionamento. Este produto está configurado para a tabela de frequência regional.</li> <li>• À atenção do utilizador: este dispositivo deve ser instalado e utilizado a uma distância mínima de 20 cm entre o dispositivo e o corpo.</li> </ul> <p>* O padrão "IEEE 802.11ac" não se encontra disponível em todos os países.</p>	

**SLOVENČINA**

<b>Technické parametre pre bezdrôtový modul</b>	
<b>Bezdrôtová sieť LAN (IEEE 802.11a/b/g/n)</b>	
<b>Frekvenčný rozsah (MHz)</b>	<b>Výstupný výkon (max.) (dBm)</b>
2 400 až 2 483,5	802.11a : 18
5 150 až 5 825	802.11b : 20
	802.11g : 20
	802.11n – 2.4 GHz : 20
	802.11n – 5 GHz : 18
<ul style="list-style-type: none"> <li>• Kanály pásma sa môžu líšiť v závislosti od krajiny, používateľ preto nemôže zmeniť ani upraviť prevádzkovú frekvenciu. Tento produkt je nastavený na regionálnu tabuľku frekvencií.</li> <li>• Informácia pre používateľov: Toto zariadenie by malo byť namontované a používané v minimálnej vzdialenosti 20 cm medzi zariadením a telom.</li> </ul>	
* Štandard "IEEE 802.11ac" nie je dostupný vo všetkých krajinách.	

**SVENSKA**

<b>Trådlös modul, specifikationer</b>	
<b>Trådlöst LAN (IEEE 802.11a/b/g/n)</b>	
<b>Frekvensområde (MHz)</b>	<b>Uteffekt (Max.) (dBm)</b>
2 400 till 2 483,5 5 150 till 5 825	802.11a : 18 802.11b : 20 802.11g : 20 802.11n – 2.4 GHz : 20 802.11n – 5 GHz : 18
<ul style="list-style-type: none"> <li>• Eftersom kanalband kan variera från land till land kan användaren inte ändra eller justera funktionsfrekvensen. Produkten är konfigurerad för den regionala frekvenstabellen.</li> <li>• För användarens skull bör enheten installeras och användas med minst 20 cm avstånd mellan enheten och kroppen.</li> </ul> <p>* "IEEE 802.11ac" finns inte i alla länder.</p>	

**УКРАЇНСЬКА**

<b>Бездротовий модуль: технічні характеристики</b>	
<b>Бездротова локальна мережа (IEEE 802.11a/b/g/n)</b>	
<b>Частотний діапазон (МГц)</b>	<b>Вихідна потужність (макс.) (дБм)</b>
Від 2400–2483,5 Від 5150–5825	802.11a : 18 802.11b : 20 802.11g : 20 802.11n – 2.4 GHz : 20 802.11n – 5 GHz : 18
<ul style="list-style-type: none"> <li>• Оскільки в різних країнах використовуються різні діапазони каналів, користувач не може змінити чи налаштувати робочу частоту. Цей пристрій налаштовано відповідно до таблиці регіональних частот.</li> <li>• До уваги користувача: даний пристрій слід встановлювати та використовувати на відстані не менше 20 см від тіла.</li> </ul> <p>* Стандарт "IEEE 802.11ac" підтримується не у всіх країнах.</p>	

## TÜRKÇE

<b>Kablosuz modül Teknik Özellikleri</b>	
<b>Kablosuz LAN (IEEE 802.11a/b/g/n)</b>	
<b>Frekans aralığı (MHz)</b>	<b>Çıkış gücü (Maks.) (dBm)</b>
2400 ile 2483,5 5150 ile 5825	802.11a : 18 802.11b : 20 802.11g : 20 802.11n – 2.4 GHz : 20 802.11n – 5 GHz : 18
<ul style="list-style-type: none"> <li>• Bant kanalları ülkelere göre değişebilir, bu nedenle kullanıcı çalışma frekansını değiştiremez ya da ayarlayamaz. Bu ürün bölgesel frekans tablosuna uygun olarak yapılandırılmıştır.</li> <li>• Kullanıcının optimum rahatlığı için bu aygıt, aygıt ve beden arasında en az 20 cm mesafe olacak şekilde kurulmalı ve çalıştırılmalıdır.</li> </ul> <p>*"IEEE 802.11ac" tüm ülkelerde mevcut değildir.</p>	

**РУССКИЙ**

<b>Беспроводной модуль: технические характеристики</b>	
<b>Беспроводная локальная сеть (IEEE 802.11a/b/g/n)</b>	
<b>Диапазон частот (МГц)</b>	<b>Выходная мощность (макс.) (дБм)</b>
От 2400 до 2483,5 От 5150 до 5825	802.11a : 18 802.11b : 20 802.11g : 20 802.11n – 2.4 GHz : 20 802.11n – 5 GHz : 18
<ul style="list-style-type: none"> <li>• Поскольку диапазоны могут отличаться в разных странах, пользователь не может изменять или настраивать рабочую частоту. Этот продукт настроен в соответствии с таблицей частот в регионах.</li> <li>• Для безопасности пользователя устройство необходимо устанавливать и использовать на расстоянии минимум 20 см от пользователя.</li> </ul> <p>* Стандарт "IEEE 802.11ac" недоступен в некоторых странах.</p>	



