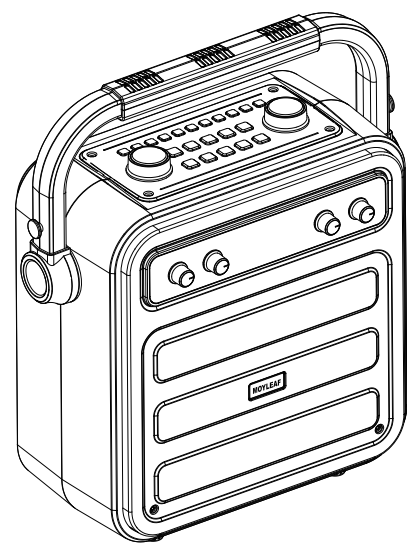


# MOYLEAF

## Multifunctional Portable Speaker

Model: K500



### User Manual

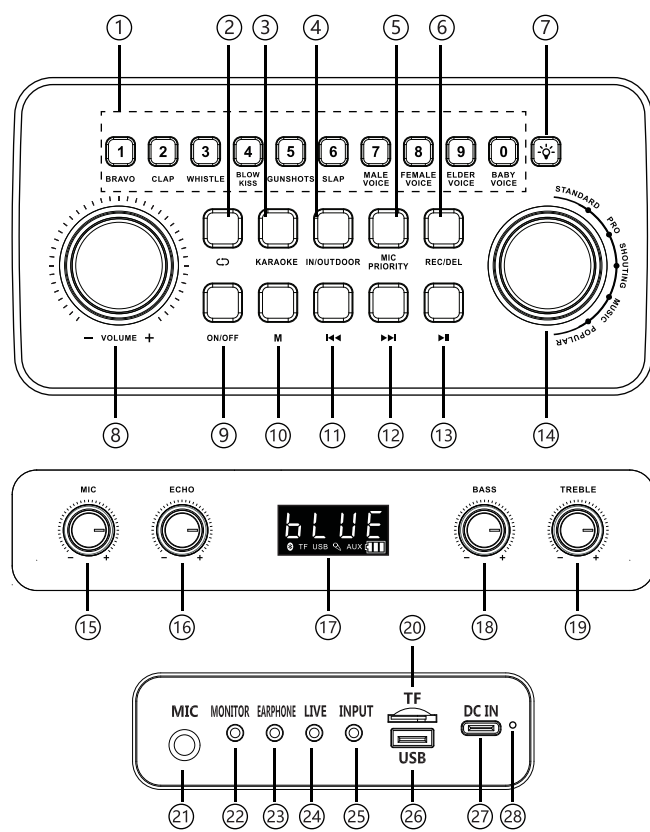
Dear user:

Thank you for purchasing our company's multifunctional portable speakers. For your better use of this product, please read the instructions for use of this product carefully before operation. If you fail to perform the correct operation according to the instructions on the manual, damage is caused. Our company will not bear any responsibility.

**Precautions:**

1. Do not use this product near a place with water, and do not soak this product in any liquid.
2. Do not use this product near any heat source.
3. Before using this product, please adjust the sound to an appropriate volume to avoid damage to your health and equipment.
4. When using this product for the first time, please fully charge the machine before using it.

**Schematic diagram of speaker buttons and ports**



**Speaker operation instructions**

1. **Number Key: 【123456 Number Key】** long press to send out the sound effect of the corresponding number key.  
**【7890 Number Key】** When microphone is connected, long press to change the voice changing effect of microphone, long press again to restore the original sound.  
**【1234567890 Number Key】** In the state of U disk or TF card, short press can select music to play.
2. **【↻】**: In the state of U disk or TF card, short press to switch between single loop and all loop.
3. **【KARAOKE】**: Short press in any state to switch accompaniment on or off.
4. **【IN/OUTDOOR】**: In any state, short press to switch indoor or outdoor sound effects.
5. **【MIC PRIORITY】**: Short press in any state to turn on or off the microphone priority function. Turn on microphone priority function, use the microphone to speak when playing music, the music sound will be weakened, and the speech sound will be the main playing sound.
6. **【REC/DEL】**: In the state of U disk or TF card, short press to enter recording, short press again to play recording. When playing the recording, long press the recording button to delete the recording file.
7. **【☀️】**: In any state, short press can switch 5 kinds of lighting effects.
8. **【VOLUME】**: Turn the knob to the left to decrease volume, turn the knob to the right to increase volume.
9. **【ON/OFF】**: Long press to turn on, long press again to turn off.
10. **【M】**: Short press to switch mode.
11. **【⏮️】**: Short press to switch to previous song, in the state of U disk or TF card, long press to rewind.
12. **【▶▶】**: Short press to switch to next song, in the state of U disk or TF card, long press to fast forward.
13. **【⏸️】**: Short press to pause/play.
14. **【Microphone sound effect】**: Turn the knob to select 5 microphone sound effects.
15. **【MIC VOL】**: Turn the knob to the left to decrease microphone volume, turn the knob to the right to increase microphone volume.
16. **【ECHO】**: Turn the knob to the left to decrease microphone echo, turn the knob to the right to increase microphone echo.
17. **【Display】**: Can display the status of the current function.
18. **【BASS】**: Turn the knob to the left to decrease bass, turn the knob to the right to increase bass.
19. **【TREBLE】**: Turn the knob to the left to decrease treble, turn the knob to the right to increase treble.
20. **【TF card slot】**: Insert TF card to play audio files in MP3 format, TF card will read and play directly.
21. **【MIC hole】**: Support wired microphone.
22. **【Monitor hole】**: Plug in earphones for live monitoring.
23. **【Earphone hole】**: Insert earphones to listen to music.
24. **【Live hole】**: Insert the live cable for live access.
25. **【Input hole】**: Support audio input of an external audio source. Inside the input hole, there is a built-in hidden reset button. Insert a thin thimble into the hole and press lightly to restore the factory settings.
26. **【USB port】**: Insert U Disk to play audio files in MP3 format, U Disk will read and play directly.
27. **【Charging port】**: Can use the Type-C charging cable delivered with this machine for charging.
28. **【Charging light】**: Red light is on when charging, red light is off when fully charged.

**Bluetooth connection operation**

1. Power on and enter Bluetooth mode BLUE, then turn on the Bluetooth of the mobile phone to search for the Bluetooth device K500 or a series of digital codes for pairing. If you are prompted to pair the password, please enter "0000" and click OK to connect.
2. Short press play button to answer and hang up the call.
3. K song in Bluetooth mode does not currently support speaker control of mobile phones.

**Charging instructions**

Connect the charging cable to the 5V 2A power adapter for charging. red light is on when charging, red light is off when fully charged.

**Speaker troubleshooting**

1. **Turn off automatically when you turn it on**  
The battery is low, please charge it fully before use.
2. **Play automatically shut down or restart**  
The battery is low, please charge it fully before use.
3. **Charging light is not on, no charging**  
Whether the charging cable is plugged in well and whether it is damaged; whether the charger is normal, please use the original charger to charge the speaker.

**4. Bluetooth status is silent**

Whether the Bluetooth is paired correctly, the Bluetooth device is playing, and the volume is not the minimum.

**5. Silent playback on TF card/U disk**

Check whether the TF card direction is inserted correctly and in place, whether the U disk is inserted in place or in good contact; whether the music format in the TF card or U disk is correct (Note: The music in the TF card/U disk mainly supports MP3 compressed audio files and WMA lossless audio files Playback); Whether the speaker volume is adjusted to the minimum.

**6. Recording does not work**

Whether there is space in the TF card or U disk, delete some files to reserve storage space. The recording can only be recorded in TF card mode and U disk mode. Cannot record when the wired microphone is plugged in and the wireless microphone is turned on.

**7. Recording cannot be deleted**

When playing the recording file, long press the recording button or connect to the computer to delete it.

**8. The recording sound is small or noisy**

When recording, please be close to the 5-15cm range of the recording hole.

**9. No sound during live**

Had you using a dedicated live line with 4 sections?

**10. The crash or the above faults cannot be ruled out**

Reset to restore factory settings (Reset button: In the input hole, there is a built-in hidden reset button. Insert a thin thimble into the hole and press lightly to restore the factory settings.)

**Speaker product parameters**

Input power: 5V 2A  
 Output power: 40W  
 Speaker: 5.25 inch 30W+2inch Treble 10W  
 Frequency effect: 80Hz—18KHz  
 Bluetooth version: 5.0  
 S/N: ≥80dB  
 Battery: 7.4V/4000mAh(New energy power battery)  
 Charging time: 4-5 Hours  
 Size: 318x203x301mm

**Parts List**

Speaker.....	1pc
Microphone .....	2pcs
Live cable.....	1pc
Audio cable.....	1pc
Belt.....	1pc
Type-C charging cable.....	1pc
User Manual.....	1pc

**FCC WARNING**

This device complies with part 15 of the FCC Rules. Operation is subject to the following two conditions: (1) This device may not cause harmful interference, and (2) this device must accept any interference received, including interference that may cause undesired operation.

Note: This equipment has been tested and found to comply with the limits for a Class B digital device, pursuant to part 15 of the FCC Rules. These limits are designed to provide reasonable protection against harmful interference in a residential installation. This equipment generates, uses and can radiate radio frequency energy and, if not installed and used in accordance with the instructions, may cause harmful interference to radio communications. However, there is no guarantee that interference will not occur in a particular installation. If this equipment does cause harmful interference to radio or television reception, which can be determined by turning the equipment off and on, the user is encouraged to try to correct the interference by one or more of the following measures:

- Reorient or relocate the receiving antenna.
- Increase the separation between the equipment and receiver.
- Connect the equipment into an outlet on a circuit different from that to which the receiver is connected.
- Consult the dealer or an experienced radio/TV technician for help.

Note: The Grantee is not responsible for any changes or modifications not expressly approved by the party responsible for compliance. such modifications could void the user's authority to operate the equipment.

The device has been evaluated to meet general RF exposure requirement. This equipment complies with FCC's RF radiation exposure limits set forth for an uncontrolled environment. This device and its antenna(s) must not be co-located or conjunction with any other antenna or transmitter.