

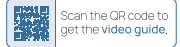


LED	Status	Description
PWR	Solid on	Power is on.
2.4G/5G	Solid on	The 2.4GHz/5GHz network is enabled.
	Blinking	Transmitting data.
WPS	Solid on	The WPS negotiations are completed.
	Blinking	Awaiting the WPS connection.
USB	Solid on	The USB device is connected.
WAN	Solid on	Connected to the Internet.
	Blinking	Transmitting data.
LAN	Solid on	Device connected.
	Blinking	Transmitting data.



DC	Power Port: Connect the included AC power adapter.
PWR	Power Button.
LAN Ports (1, 2, 3, 4)	Connect Ethernet cables to these ports, and to wired devices on your network.
WAN Port	Connect an Ethernet cable to this port, and to a broadband Internet cable/DSL or fiber modem.
USB	Connect and share USB drives on your network.
WPS	Press it to connect to the WPS-enabled network devices.
RST	Reset Button, hold the button for 10 seconds to factory reset your router.

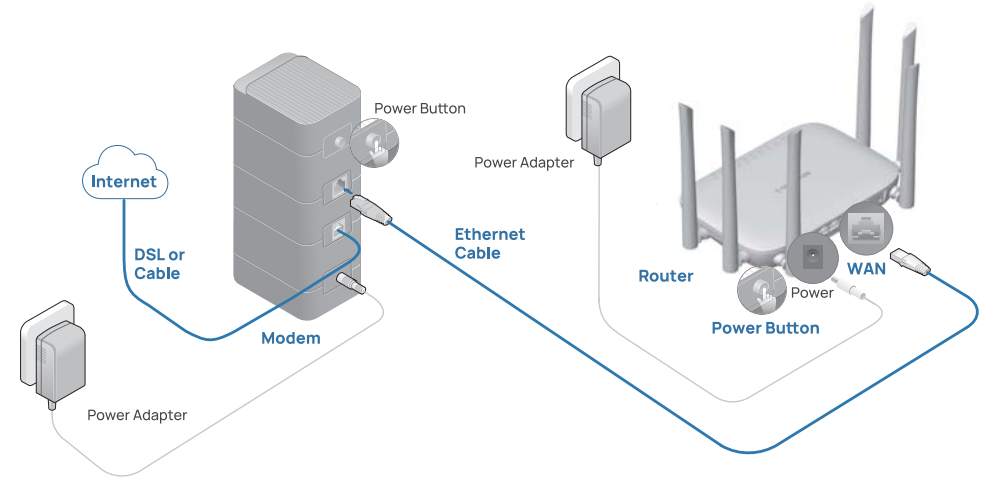
1 Install Your Router



Scan the QR code to get the video guide.

1 Turn off your modem, cable the modem to the router's WAN port.

2 Turn on the modem and wait 2 minutes for it to restart.



3 Connect the power adapter to the router and press the Power Button.

4 Flip to the next page to continue with the setup.

If your Internet comes from an Ethernet outlet, please connect the router's WAN port to it, and then follow Step 3 and Part 2: Set up Your Router.

If you want to configure this router as an access point (similar to a WiFi extender) to extend the existing network, please refer to the Access Point Mode section on the next page.



Customer Service

- Servicio al Cliente
- Kundendienst
- 顧客サービス



Scan the QR code, get Video Setup and more support.

www.iconnectize.com/help cs@iconnectize.com

Installation Guide

AC2100 Dual Band Gigabit WiFi Router

■ Model: G6

- Installationsanleitung
- Guía de instalación
- インストールガイド

* Images may differ from actual products.

Ways to Reset the Router

- With the router powered on, hold the RST button on the back until the Power LED starts blinking.
- Log in to the web management page, go to **Advanced** > **Selected Menu** > **Config**, and click **Reset**.

AP (Access Point) Mode



In this mode, the Connectize router can work as a WiFi extender to turn a wired network into a wireless network, extending the WiFi range.

- Connect the existing router to the Connectize Router. Cable Connectize router's WAN or LAN port to your existing router's Ethernet port, as shown above.
- Connect a computer to the Connectize router. Use an Ethernet cable, or wirelessly by joining the default SSID printed on the label.
- Log in to the Connectize router. Visit <http://connectizewifi.com> in a browser. Complete the instructions if this is the first time you're setting up the router.
- Enable AP Mode. Go to **Internet Settings**, select **Bridge (AP)** in **Connection Type**, and click **Save & Apply**. Wait for the router to reboot. It will complete the AP Mode setup automatically.

USB Sharing

Please insert the USB device (NTFS advised) to the router first, configure your account and folder permissions on the USB-related pages.

- Windows** Users of **Windows 7** and below do not need to set it separately. For **Windows 10** users, enable the SMB 1.0 in **Control Panel** > **Programs** > **Programs and Features**.
- macOS** Enter the SMB address in the Safari browser to access. After you finished the settings above, enter the corresponding SMB address in the file manager or browser (Only for macOS) of your device, and fill in your Account info to enjoy it.

FAQ

For more questions and answers, please visit www.iconnectize.com/faq

Q1: What connection type to choose if the router failed to detect automatically?

Type	Description
PPPoE	Applicable to use if your ISP provided a PPPoE username and password.
DHCP	Obtain IP address from ISP automatically. If your ISP does not provide username and password, choose DHCP to connect.
Static IP	Ask configurations from your ISP if you are using a static IP.

Q2: Why cannot I access the Internet after installing the router?

- Try connecting a computer directly to the modem via an Ethernet cable, then check if you have Internet access. If not, contact your ISP.
- Check if the router's WAN port is connected to the modem properly, and confirm the indicator's status.
- If your wired devices cannot access the Internet:
 - Confirm if your PC is connected to a LAN port properly.
 - Make sure your PC is set to obtain an IP address and DNS server address automatically.
- If your WiFi-enabled devices cannot access the Internet:
 - Reboot the router and reconnect to the WiFi. If it doesn't work, factory reset the router and repeat the router setup process.

Q3: Why cannot I access the web management page?

- If the computer is set to static IP address, change it to obtain an IP address automatically.
- Disable the proxy server, if enabled. Also, disable the VPN software.
- Disable and re-enable the network adapter being used on your computer.
- Ensure that <http://connectizewifi.com> or 192.168.5.1 is correctly entered in the web browser.
- Use another web browser and try again.
- Reboot your router and try again.

Q4: Why my download speed cannot reach the advertised speed rate?

- Devices under 2.4G WiFi will get a lower speed than 5G WiFi. Also, the wired connection will deliver a higher speed than a wireless connection.
- Check if there are multiple users sharing the connection at the same time. Try to limit their speed, or if required, even block them in the web management page.
- Check the Internet speed and link quality from your ISP. If the Internet is 100Mbps, you can get up to 12.5Mbps download speed. (1 Byte=8 bits) Actual speeds may vary due to transmission loss.
- Place the router in a central location instead of the corner to improve wireless performance. All antennas should be upright.
- Try to connect the gigabit port of the modem to the router using a cat5e Ethernet cable, or better.

FCC Statement

This equipment has been tested and found to comply with the limits for a Class B digital device, pursuant to part 15 of the FCC Rules. These limits are designed to provide reasonable protection against harmful interference in a residential environment. This equipment generates, uses and can radiate radio frequency energy and, if not installed and used in accordance with the instructions, may cause harmful interference to radio communications. However, there is no guarantee that interference will not occur in a particular installation. If this equipment does cause harmful interference to radio or television reception, which can be determined by turning the equipment off and on, the user is encouraged to try to correct the interference by one or more of the following measures:

- Reorient or relocate the receiving antenna.
- Increase the separation between the equipment and receiver.
- Connect the equipment into an outlet on a circuit different from that to which the receiver is connected.
- Consult the dealer or an experienced radio/TV technician for help.

FCC Radiation Exposure Statement

This device complies with FCC radiation exposure limits set forth for an uncontrolled environment and it also complies with Part 15 of the FCC Rules. This equipment must be installed and operated in accordance with provided instructions and the antenna(s) used for this transmitter must not be co-located or in operation within a distance of less than 20 cm from persons and must not be operated in conjunction with any other antenna or transmitter. FCC users and installers must be provided with antenna installation instructions and consider reviewing the FCC Radiation Exposure Statement. This device complies with Part 15 of the FCC Rules. Operation is subject to the following two conditions:

- This device may cause harmful interference, and
- This device must accept any interference received, including interference that may cause undesired operation.

Caution! Any changes or modifications not expressly approved by the party responsible for compliance could void the user's authority to operate the equipment. Operating frequency: 2412~2462MHz, 5150~5250MHz, 5725~5850MHz



CE Mark Warning

This is a Class B product. In a domestic environment, this product may cause radio interference, in which case the user may be required to take adequate measures. Operations in the 5.2-5.8GHz band are restricted to indoor use only. This equipment should be installed and operated with minimum distance 20cm between the device and your body.

NOTE: (1) The manufacturer is not responsible for any radio or TV interference caused by unauthorized modifications to this equipment. (2) To avoid unnecessary radiation interference, it is recommended to use shielded RJ45 cables.

WARNING: The manufacturer is a radio frequency device, the associated power shall remain safely operable.

Declaration of Conformity
 Herby, SHENZHEN TENO NETWORK TECHNOLOGIES CO., LTD. declares that the radio equipment type G6 is in compliance with Directive 2014/53/EU (the "RoHS") and that the Declaration of Conformity is available at the following internet address: <http://www.iconnectize.com/regaffair>

Operating Frequency
 2.4 GHz: EU/UK/US/CA/CH/IN/JP
 5 GHz: EU/US/CA/CH/IN/JP
Power (Max)
 2.4 GHz: 10dBm
 5 GHz: 22.5dBm
 Software Version: V64J19100000

Caution (G6)

Adapter Model: ES888C-2020501P
 Manufacturer: SHENZHEN EAST SUN ELECTRONIC CO., LTD.
 Model: 100~250V AC, 50/60Hz, 1.2A
 Output: 12V 1.5A
 DC Voltage



RECYCLING

This product bears the selective recycling symbol for Waste Electrical and Electronic Equipment (WEEE). This means that this product must be handled pursuant to European Directive 2012/19/EU in order to be recycled or dismantled to minimize its impact on the environment. User has the choice to give their product to a competent recycling organization or to the retailer when they buy new electrical or electronic equipment.
 Operating Temperature: 0°C~40°C
 Operating Humidity: 10%~90% RH, non-condensing

English

1. Install Your Router

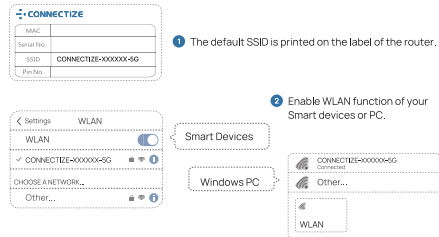
- 1 Turn off the modem, cable the modem to the WAN port on the router.
- 2 Turn on the modem and wait 2 minutes for it to restart.
- 3 Connect the power adapter to the router, and press the Power Button.

- If your Internet comes from an Ethernet outlet, please connect the router's WAN port to it, and then follow Step 3 and Part 2: Set up Your Router.
- If you want to configure this router as an Access Point (similar to a WiFi extender) to extend the existing network, please refer to the Access Point Mode section on the first page.

2. Set up Your Router

1. Connect your device to the router (Wireless or Wired)

• Wireless



1 Join the default SSID that displays in the list.

• Wired

- For a wired connection, use an Ethernet cable to connect your computer to a LAN port on your router.

2. Connect the router to the Internet.

- 1 Log in to the router (The default login password is admin.)
Launch a web browser, enter <http://connectzefwi.com> or 192.168.5.1, and a login page displays.
PS: If the login page does not display, please refer to Q3 of FAQ.



2 Choose the connection type.

The webpage detects your connection type automatically. If detection fails, choose your connection type manually, then click the Next button.

PS: If you click the Skip Wizard button, the router will follow the auto-detected connection type, meanwhile the login password, SSID, and WiFi password will be set as default.



3 Set the WiFi Name, WiFi Password, and Login Password.

Default Login Password: admin

It's advised to set a stronger password to ensure a secure family network. Then follow the step-by-step instructions of the Quick Setup Wizard to connect to the Internet.



Deutsch

1. Installieren Sie Ihren Router

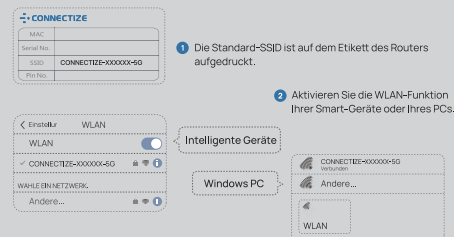
- 1 Schalten Sie das Modem aus und verbinden Sie das Modem mit dem WAN-Port des Routers.
- 2 Schalten Sie das Modem ein und warten Sie 2 Minuten, bis es neu gestartet wird.
- 3 Schließen Sie das Netzteil an den Router an und drücken Sie den Netzschalter.

- Wenn Ihr Internet von einer Ethernet-Steckdose kommt, verbinden Sie bitte den WAN-Port des Routers damit und befolgen Sie dann Schritt 3 und Teil 2: Richten Sie Ihren Router ein.
- Wenn Sie diesen Router als Access Point (ähnlich einem WiFi Extender) konfigurieren möchten, um das vorhandene Netzwerk zu erweitern, lesen Sie bitte den Abschnitt Access Point Mode auf der Rückseite.

2. Richten Sie Ihren Router Ein

1. Schließen Sie Ihr Gerät an den Router an (drahtlos oder verdrahtet).

• Drahtlos



1 Verbinden Sie die Standard-SSID, die in der Liste angezeigt wird.

• Verdrahtet

- Verwenden Sie für eine Kabelverbindung ein Ethernet-Kabel, um Ihren Computer an einen LAN-Anschluss Ihres Routers anzuschließen.

2. Verbinden Sie den Router mit dem Internet.

- 1 Melden Sie sich beim Router an (Das Standardkennwort lautet admin.)
Starten Sie einen Webbrowser, geben Sie <http://connectzefwi.com> oder 192.168.5.1 ein, und eine Anmeldeseite wird angezeigt.
PS: Wenn die Anmeldeseite nicht angezeigt wird, lesen Sie bitte Q3 der FAQ.



2 Wählen Sie den Verbindungstyp.

Die Webseite erkennt Ihren Verbindungstyp automatisch. Wenn die Erkennung fehlschlägt, wählen Sie Ihren Verbindungstyp manuell aus. Klicken Sie dann auf die Schaltfläche Weiter.

PS: Wenn Sie auf die Schaltfläche Schnell-Assistent überspringen klicken, der Router folgt dem automatisch erkannten Verbindungstyp. In der Zwischenzeit werden das Anmeldekennwort, die SSID und das WLAN-Kennwort als Standard festgelegt.



3 Legen Sie die WLAN Name, das WLAN-Kennwort und das Anmeldekennwort fest.

Standard-Anmeldekennwort: admin

Es wird empfohlen, ein stärkeres Kennwort festzulegen, um ein sicheres Familienetzwerk zu gewährleisten. Befolgen Sie dann die schrittweisen Anweisungen des Schnellinstallations-Assistenten, um eine Verbindung zum Internet herzustellen.



Español

1. Instale Su Enrutador

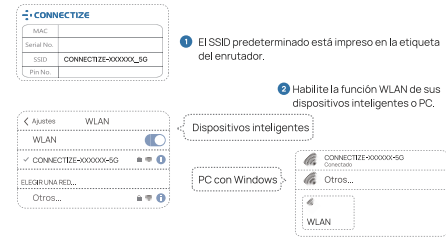
- 1 Apague el módem, conecte el módem al puerto WAN del enrutador.
- 2 Encienda el módem y espere 2 minutos para que se reinicie.
- 3 Conecte el adaptador de alimentación al router y presione el botón de encendido.

- Si su Internet proviene de una salida Ethernet, conéctelo al puerto WAN del enrutador y luego siga el Paso 3 y la Parte 2: Configure su enrutador.
- Si desea configurar este enrutador como un punto de acceso (similar a un extensor WiFi) para extender la red existente, consulte la sección Modo de punto de acceso en la página posterior.

2. Configura Tu Enrutador

1. Conecte su dispositivo al router (inalámbrico o con cable)

• Inalámbrico



1 Únase al SSID predeterminado que se muestra en la lista.

• Con cable

- Para una conexión por cable, use un cable Ethernet para conectar su computadora a un puerto LAN en su enrutador.

2. Conecte el enrutador a Internet.

- 1 Acceder al router (La contraseña predeterminada es admin.)
Inicie un navegador web, introduzca <http://connectzefwi.com> o 192.168.5.1, y aparecerá una página de inicio de sesión.
PS: Si la página de inicio de sesión no se muestra, consulte el tercer trimestre de las preguntas frecuentes.



2 Elija el tipo de conexión.

La página web detecta su tipo de conexión automáticamente. Si la detección falla, elija su tipo de conexión manualmente, quindi fare clic sul pulsante Avanti.

PS: Se fai clic sul pulsante Skip Wizard, il router seguirà il tipo di connessione rilevato automaticamente, nel frattempo la password di accesso, l'SSID e la password WiFi saranno impostate come predefinite.



3 Impostare il Nome WiFi, la password WiFi e la password di accesso.

Password di accesso predefinita: admin

Si consiglia di impostare una password più sicura per garantire una rete familiare sicura. Quindi seguire le istruzioni dettagliate della procedura guidata di configurazione rapida per connettersi a Internet.



日本語

1. ルーターをインストールする

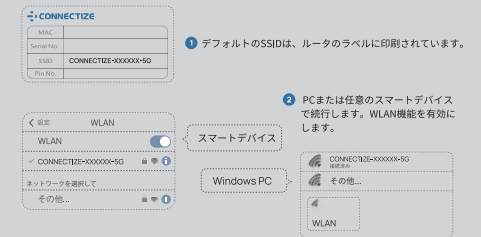
- 1 モデムの電源を切り、モデムをルーターのWANポートにケーブル接続します。
- 2 モデムの電源を入れ、再起動するまで2分間待ちます。
- 3 電源アダプタをルーターに接続し、電源ボタンを押します。

- インターネットがイーサネットコンセントから接続されている場合は、ルーターのWANポートを接続してから、手順3とパート2: ルーターを設定する。
- このルーターをアクセスポイント (WiFiエクステンダーと同様) として構成して既存のネットワークを拡張する場合は、裏ページのアクセスポイントモードセクションを参照してください。

2. ルーターを設定する

1. デバイスをルーターに接続します (ワイヤレスまたは有線)

• 無線



3 リストに表示されるデフォルトのSSIDに接続します。

• 有線

- 有線接続の場合は、イーサネットケーブルを使用してコンピューターをルーターのLANポートに接続します。

2. ルーターをインターネットに接続します。

- 1 ルーターにログインします (デフォルトのパスワードはadminです。)
Webブラウザを起動し、<http://connectzefwi.com> または 192.168.5.1 と入力すると、ログインページが表示されます。
PS: ログインページが表示されない場合は、FAQのQ3を参照してください。



2 接続タイプを選択してください。

Webページは接続タイプを自動的に検出します。検出に失敗した場合は、接続タイプを手動で選択してください。[次]ボタンをクリックします。

PS: [Skip Wizard]ボタンをクリックすると、ルーターは自動検出された接続タイプに従いますが、ログインパスワード、SSID、WiFiパスワードがデフォルトとして設定されます。



3 WiFi名、WiFiパスワード、ログインパスワードを設定します。

デフォルトのログインパスワード: admin

安全な家族ネットワークを確保するために、より強力なパスワードを設定することをお勧めします。次に、クイックセットアップウィザードの手順に従ってインターネットに接続します。

