

# Firefly Laser Projector

## User Manual

Thank you for your purchase. Please read this manual carefully before operation. It will give you general information for your safety and optimal performance.

## What's in the box

- |                    |                      |
|--------------------|----------------------|
| 1.Laser light x 1  | 2.Adaptor x 1        |
| 3.Power cord x 1   | 4.Bracket x 1        |
| 5.Ground stake x 1 | 6.Remote control x 1 |
| 7.Screws x 1       | 8.User Manual x 1    |
| 9.Base x 1         |                      |

## Safety Attention

-Allowing the unit to cool for 30 minutes after 6 hours of operation will increase the life of the light source

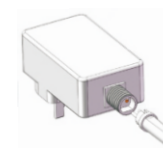
-This is a Class II laser light.

-This product can be used either outdoors or indoors. It is waterproof(Ip65).Do not put this near flammable objects or liquids. Do not stare into the light source

Please only use the power adapter that is included. If an extension cord is needed, please check that the extension cord is manufactured to the specifications needed for the environment and application that it is being used for.

## Installation

**1) Cable and Plug Adapter:** Connect the cable to the plug adapter. Make sure that the 2pin plug is oriented in the right way. The Flat and Keyway need to match otherwise there will be no contact. Screw the connect or cap securely.

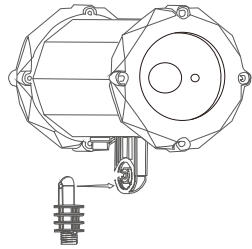


**2) Mounting and Positioning:**Mount the laser and adjust the angle of the laser light to you needs:The laser light should be fixed to a solid object, by inserting it into soil, attaching it to trees,or by placing it on the floor or ground. It is essential to beattached securely for a safe installation. Do not stare into the beam. Be sure that there are no flammables or explosives nearby.

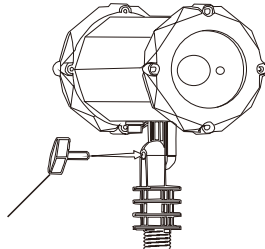
**3)Power adapter:** The power adapter should be installed indoors or to a proper outdoor, waterproof outlet.

**4)Remote Control:** Pull the plastic sheet out of the bottom of the remote before use.(This can be put back in to conserve battery life when the remote is not used for extended periods of time.)

## Asseblly Steps

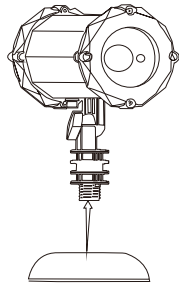


1

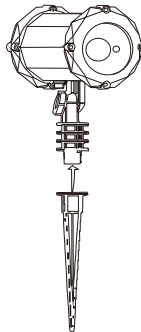


Angle  
adjustment

2

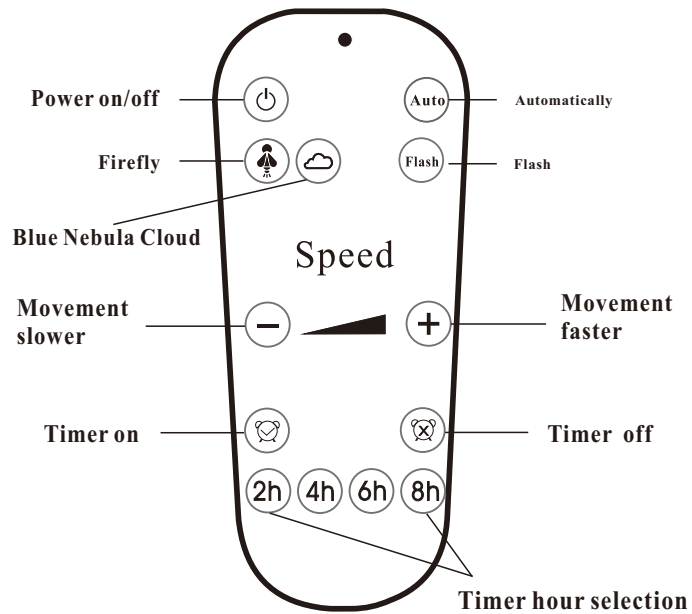


3A



3B

## Remote Control Instructions



1. Laser light on/off
2. There are two options: Strobe/No strobe
3. Firefly  
 Blue Nebula Cloud

4. switch between Auto Color-changing mode/Maual mode

5. There are three options: Slow, Fast and Static

6. If you need to use the timer, press the . The light will strobe two times to show it has accepted the command. Then press the corresponding time you want to set the timer.

If you want to cancel the timer, press the . The light will strobe twice to show it has accepted the command.

Eg: Set the timer for 2 hours. The laser will turn off after 2 hours. The laser light will then turn on automatically in 22 hours.

Rating: AC100-240V, 50/60Hz  
CALSS 2 LASER PRODUCT



MADE IN CHINA

**FCC Caution****§ 15.19 Labeling requirements.**

This device complies with part 15 of the FCC Rules. Operation is subject to the following two conditions: (1) This device may not cause harmful interference, and (2) this device must accept any interference received, including interference that may cause undesired operation.

**§ 15.105 Information to the user.**

**Note:** This equipment has been tested and found to comply with the limits for a Class B digital device, pursuant to part 15 of the FCC Rules. These limits are designed to provide reasonable protection against harmful interference in a residential installation. This equipment generates uses and can radiate radio frequency energy and, if not installed and used in accordance with the instructions, may cause harmful interference to radio communications. However, there is no guarantee that interference will not occur in a particular installation. If this equipment does cause harmful interference to radio or television reception, which can be determined by turning the equipment off and on, the user is encouraged to try to correct the interference by one or more of the following measures:

- Reorient or relocate the receiving antenna.
- Increase the separation between the equipment and receiver.
- Connect the equipment into an outlet on a circuit different from that to which the receiver is connected.
- Consult the dealer or an experienced radio/TV technician for help.

**§ 15.21 Information to user.**

Any Changes or modifications not expressly approved by the party responsible for compliance could void the user's authority to operate the equipment.